

# V&V Reference Report

## L2 ASCDS Version : 8.4.4

Observation 57601 - L2 Version 2  
Chandra X-Ray Center

L2 Processing Date : May 21 2012

## Contents

<b>1</b>	<b>Front</b>	<b>2</b>
<b>2</b>	<b>OBI</b>	<b>3</b>
2.1	OBI . . . . .	3
2.1.1	Images . . . . .	3
2.1.2	Bias . . . . .	3
2.1.3	Parameters . . . . .	4
2.1.4	Events . . . . .	4
2.2	Compared Parameters . . . . .	5
2.3	Star Slots . . . . .	6
2.4	FID Slots . . . . .	6
<b>A</b>	<b>Summary</b>	<b>7</b>
A.1	Status . . . . .	7
A.2	Comments . . . . .	7

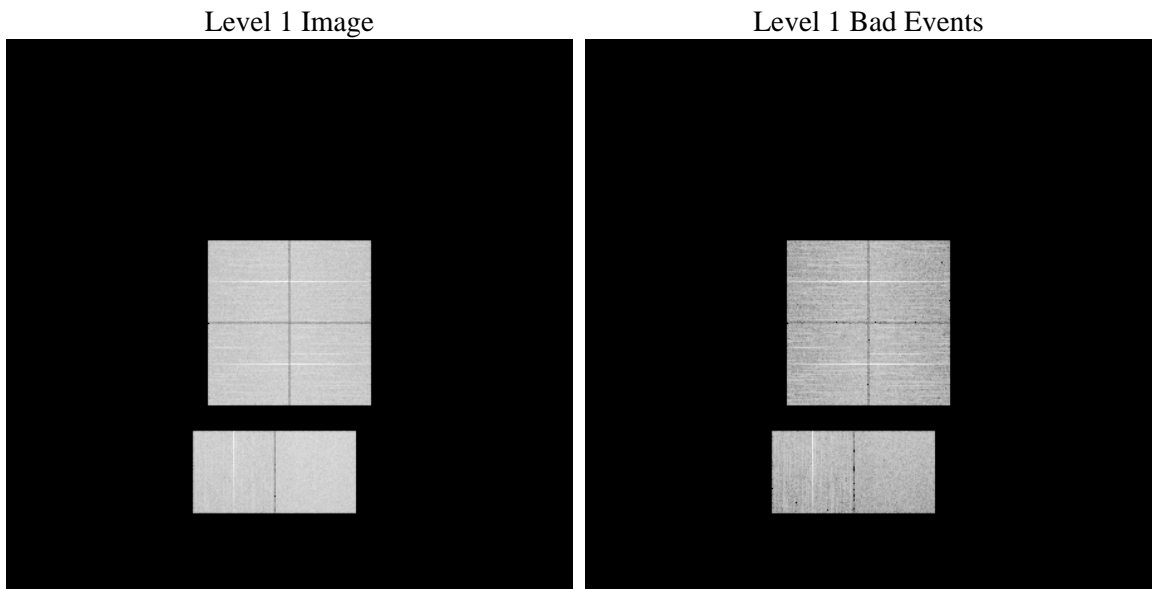
# 1 Front

seq_num	&#160	Sequence number
obs_id	57601	Observation id
title	ACIS-012367 diagnostics	Proposal title
observer	CHANDRA engineering request/realtime commanding	Principal investig
object	&#160	Source name
dtcycle	0	&#160
cycle	P	events from which exps? Prim/Second/Both
ra_targ	0.0	Observer's specified target RA [deg]
dec_targ	0.0	Observer's specified target Dec [deg]
ra_nom	334.00170313388	Nominal RA [deg]
dec_nom	11.971321920043	Nominal Dec [deg]
roll_nom	240.42642425724	Nominal Roll [deg]
revision	2	Processing version of data
ontime	8271.999969244	Sum of GTIs [s]
livetime	8167.254924833	Livetime [s]
ontime0	8271.999969244	Sum of GTIs [s]
ontime1	8271.999969244	Sum of GTIs [s]
ontime2	8271.999969244	Sum of GTIs [s]
ontime3	8271.999969244	Sum of GTIs [s]
ontime6	8271.999969244	Sum of GTIs [s]
ontime7	8271.999969244	Sum of GTIs [s]
l2events	558140	Number of level 2 events

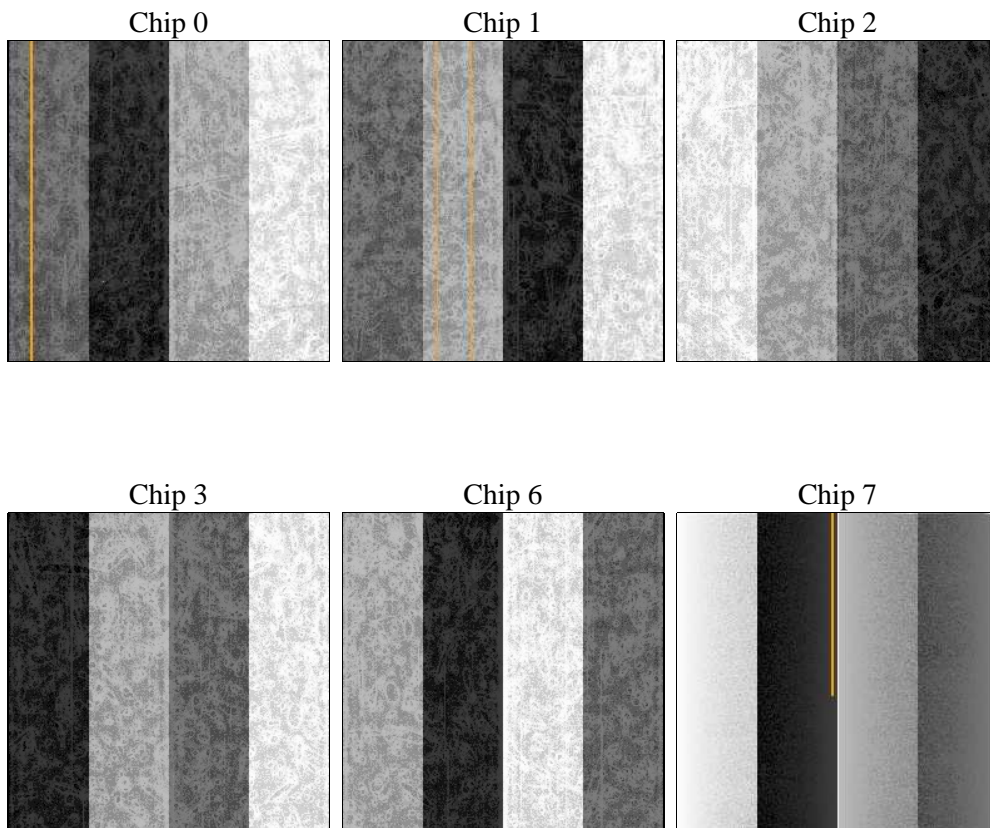
## 2 OBI

### 2.1 OBI

#### 2.1.1 Images



#### 2.1.2 Bias



### 2.1.3 Parameters

obi_num	0	Obi number	sched_exp_time	0.0	[s] Scheduled observation exposure time
ascdsver	8.4.4	Processing system revision	ontime	8271.999969244	Sum of GTIs [s]
caldsver	4.4.9	&#160	ontime0	8271.999969244	Sum of GTIs [s]
date	2012-05-21T11:04:28	Date and time of file creation	ontime1	8271.999969244	Sum of GTIs [s]
revision	2	Processing version of data	ontime2	8271.999969244	Sum of GTIs [s]
			ontime3	8271.999969244	Sum of GTIs [s]
			ontime6	8271.999969244	Sum of GTIs [s]
			ontime7	8271.999969244	Sum of GTIs [s]
			l1events	1017148	Number of level 1 events

### 2.1.4 Events

	ccd 0	ccd 1	ccd 2	ccd 3	ccd 6	ccd 7		ccd 0	ccd 1	ccd 2	ccd 3	ccd 6	ccd 7
level 1 events	161213	157787	165625	168382	169080	195061	grade 0 events	49236	48259	49658	50326	50227	25212
rejected events	69923	66093	74664	76245	73581	67389		30%	30%	29%	29%	29%	12%
rejected %	43%	41%	45%	45%	43%	34%	grade 1 events	348	305	401	400	326	160
								0%	0%	0%	0%	0%	0%
							grade 2 events	16270	17003	15641	16013	17028	27719
								10%	10%	9%	9%	10%	14%
							grade 3 events	6129	6114	6211	6310	6054	12085
								3%	3%	3%	3%	3%	6%
							grade 4 events	5952	6134	6112	6175	6227	11956
								3%	3%	3%	3%	3%	6%
							grade 5 events	4000	4163	3715	4439	4393	10983
								2%	2%	2%	2%	2%	5%
							grade 6 events	13703	14184	13339	13313	15963	50700
								8%	8%	8%	7%	9%	25%
							grade 7 events	65575	61625	70548	71406	68862	56246
								40%	39%	42%	42%	40%	28%

## 2.2 Compared Parameters

Parameter	Planned	Actual	Parameter	Planned	Actual
Instrument	ACIS	ACIS	Obspar format version number	7	7
Detector	ACIS-012367	ACIS-012367	Obspar file type	PREDICTED	ACTUAL
Grating	NONE	NONE	Obspar update status	NONE	UPDATED
Data mode	FAINT	FAINT	Number of optional ACIS chips dropped	0	0
Observation mode	SECONDARY	SECONDARY	On-chip summing requested	N	N
[deg] Pointing RA	0	334.0017031338797	Subarray requested	NONE	NONE
[deg] Pointing Dec	0	11.97132192004337	Alternating exposures requested	N	N
[deg] Pointing Roll	0.0	240.4264242572357	[s] Primary exposure time	3.2	3.2
[mm] SIM focus pos	-1.429586	-0.7809083437167272			
[mm] SIM defocus	0.1037507710433287	0.7524282956875696			
[mm] SIM translation stage pos	250.455976	250.466033080201			
[mm] SIM translation stage offset	0	-0.01005468664627074			
[s] Observation start time (MET)	338157760.778785	338157759.75378			
Observation start date	2008-09-18T20:42:41	2008-09-18T20:42:39			
[s] Observation end time (MET)	338180259.529892	338180258.50489			
Observation end date	2008-09-19T02:57:40	2008-09-19T02:57:38			
Read mode	TIMED	TIMED			

## 2.3 Star Slots

## 2.4 FID Slots

## **A Summary**

### **A.1 Status**

V&V Scientist	Jen Lauer
V&V Date (YYYY-MM-DD)	2012.05.29
V&V Edition	1
V&V Disposition and Status	OK
V&V Charge Time	8.271999969244

### **A.2 Comments**