

# V&V Reference Report

## L2 ASCDS Version : 8.4.5

Observation 56301 - L2 Version 2  
Chandra X-Ray Center

L2 Processing Date : Jun 24 2012

## Contents

<b>1</b>	<b>Front</b>	<b>2</b>
<b>2</b>	<b>OBI</b>	<b>3</b>
2.1	OBI . . . . .	3
2.1.1	Images . . . . .	3
2.1.2	Bias . . . . .	3
2.1.3	Parameters . . . . .	4
2.1.4	Events . . . . .	4
2.2	Compared Parameters . . . . .	5
2.3	Star Slots . . . . .	6
2.4	FID Slots . . . . .	6
<b>A</b>	<b>Summary</b>	<b>7</b>
A.1	Status . . . . .	7
A.2	Comments . . . . .	7

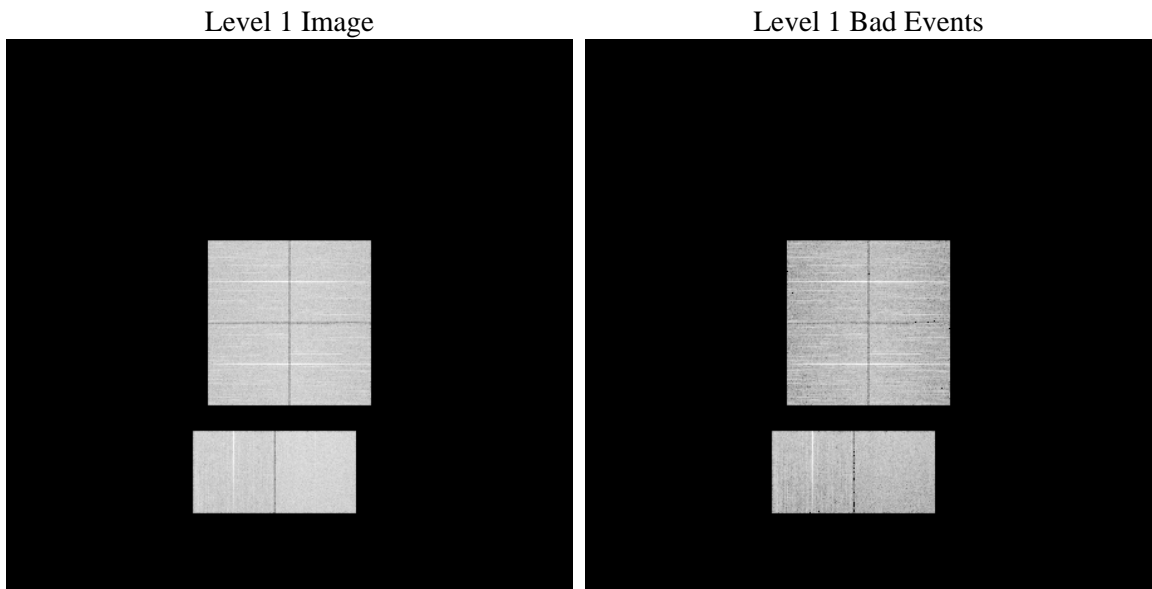
# 1 Front

seq_num	&#160	Sequence number
obs_id	56301	Observation id
title	ACIS-012367 diagnostics	Proposal title
observer	CHANDRA engineering request/realtime commanding	Principal investig
object	&#160	Source name
dtcycle	0	&#160
cycle	P	events from which exps? Prim/Second/Both
ra_targ	0.0	Observer's specified target RA [deg]
dec_targ	0.0	Observer's specified target Dec [deg]
ra_nom	192.0329306341	Nominal RA [deg]
dec_nom	-32.006526010693	Nominal Dec [deg]
roll_nom	313.97617957429	Nominal Roll [deg]
revision	2	Processing version of data
ontime	8457.5999685526	Sum of GTIs [s]
livetime	8350.5047451955	Livetime [s]
ontime0	8457.5999685526	Sum of GTIs [s]
ontime1	8457.5999685526	Sum of GTIs [s]
ontime2	8457.5999685526	Sum of GTIs [s]
ontime3	8457.5999685526	Sum of GTIs [s]
ontime6	8457.5999685526	Sum of GTIs [s]
ontime7	8457.5999685526	Sum of GTIs [s]
l2events	392930	Number of level 2 events

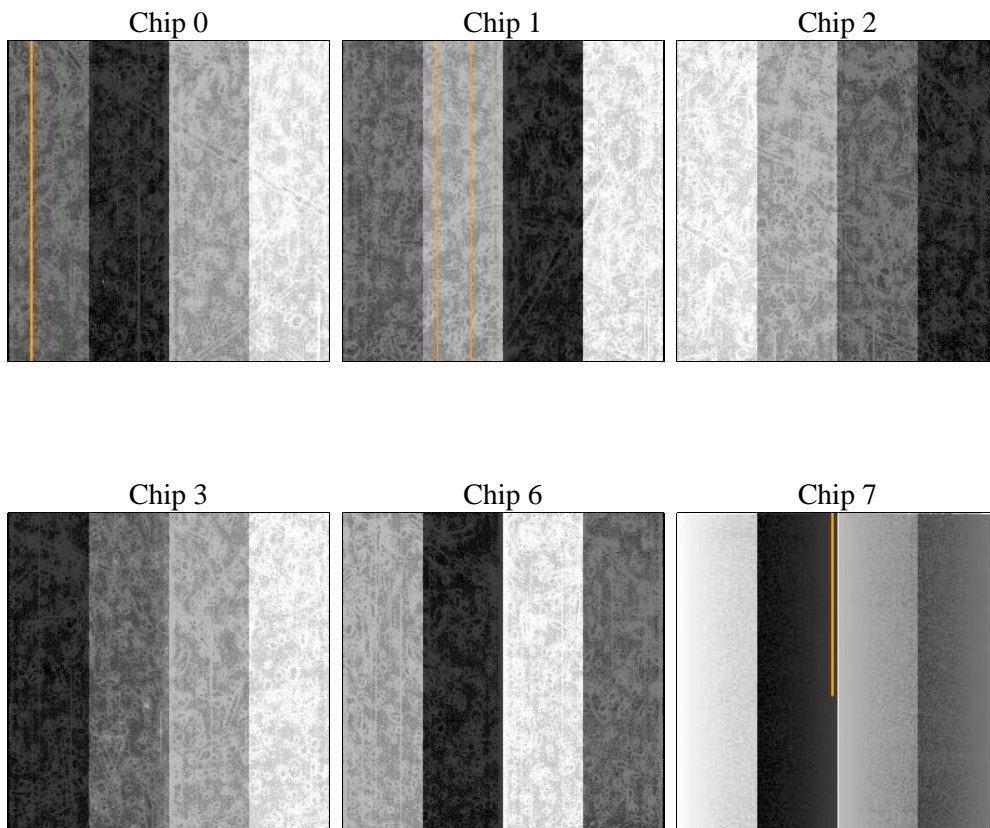
## 2 OBI

### 2.1 OBI

#### 2.1.1 Images



#### 2.1.2 Bias



### 2.1.3 Parameters

obi_num	0	Obi number	sched_exp_time	0.0	[s] Scheduled observation exposure time
ascdsver	8.4.5	Processing system revision	ontime	8457.5999685526	Sum of GTIs [s]
caldsver	4.4.10	&#160	ontime0	8457.5999685526	Sum of GTIs [s]
date	2012-06-24T21:44:22	Date and time of file creation	ontime1	8457.5999685526	Sum of GTIs [s]
revision	2	Processing version of data	ontime2	8457.5999685526	Sum of GTIs [s]
			ontime3	8457.5999685526	Sum of GTIs [s]
			ontime6	8457.5999685526	Sum of GTIs [s]
			ontime7	8457.5999685526	Sum of GTIs [s]
			l1events	831126	Number of level 1 events

### 2.1.4 Events

	ccd 0	ccd 1	ccd 2	ccd 3	ccd 6	ccd 7		ccd 0	ccd 1	ccd 2	ccd 3	ccd 6	ccd 7
level 1 events	129200	129879	132754	136599	137860	164834	grade 0 events	32613	30329	33887	34382	29974	15902
rejected events	66096	66226	70216	73274	72338	67600		25%	23%	25%	25%	21%	9%
rejected %	51%	50%	52%	53%	52%	41%	grade 1 events	186	166	236	249	153	122
								0%	0%	0%	0%	0%	0%
							grade 2 events	12303	14977	10700	11231	16055	21811
								9%	11%	8%	8%	11%	13%
							grade 3 events	4119	3852	4296	4125	3763	8251
								3%	2%	3%	3%	2%	5%
							grade 4 events	4022	3824	4228	4255	3719	7926
								3%	2%	3%	3%	2%	4%
							grade 5 events	3665	3545	3323	3932	3730	9440
								2%	2%	2%	2%	2%	5%
							grade 6 events	10047	10671	9427	9332	12011	43344
								7%	8%	7%	6%	8%	26%
							grade 7 events	62245	62515	66657	69093	68455	58038
								48%	48%	50%	50%	49%	35%

## 2.2 Compared Parameters

Parameter	Planned	Actual	Parameter	Planned	Actual
Instrument	ACIS	ACIS	Obspar format version number	7	7
Detector	ACIS-012367	ACIS-012367	Obspar file type	PREDICTED	ACTUAL
Grating	NONE	NONE	Obspar update status	NONE	UPDATED
Data mode	FAINT	FAINT	Number of optional ACIS chips dropped	0	0
Observation mode	SECONDARY	SECONDARY	On-chip summing requested	N	N
[deg] Pointing RA	0	192.0329306340952	Subarray requested	NONE	NONE
[deg] Pointing Dec	0	-32.00652601069328	Alternating exposures requested	N	N
[deg] Pointing Roll	0.0	313.9761795742899	[s] Primary exposure time	3.2	3.2
[mm] SIM focus pos	-1.429586	-0.6828225247311905			
[mm] SIM defocus	0.1037507710433287	0.8505141146731063			
[mm] SIM translation stage pos	250.455976	250.466033080201			
[mm] SIM translation stage offset	0	-0.01005468664627074			
[s] Observation start time (MET)	388426688.642893	388426687.61789			
Observation start date	2010-04-23T16:18:09	2010-04-23T16:18:07			
[s] Observation end time (MET)	388436868.943411	388436867.91841			
Observation end date	2010-04-23T19:07:49	2010-04-23T19:07:47			
Read mode	TIMED	TIMED			

## 2.3 Star Slots

## 2.4 FID Slots

## A Summary

### A.1 Status

V&V Scientist	Beth Sundheim
V&V Date (YYYY-MM-DD)	2012.07.01
V&V Edition	1
V&V Disposition and Status	OK
V&V Charge Time	8.4575999685526

### A.2 Comments