

V&V Reference Report

L2 ASCDS Version : 7.6.7.1

Observation 5601 - L2 Version 002
Chandra X-Ray Center

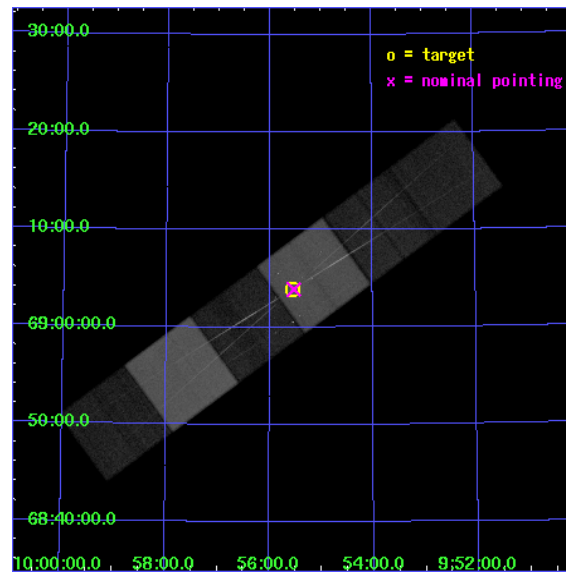
L2 Processing Date : Mar 15 2006

Contents

1	Front	2
2	OBI	3
2.1	OBI	3
2.1.1	Images	3
2.1.2	Bias	3
2.1.3	Parameters	4
2.1.4	Events	4
2.2	Compared Parameters	5
2.3	Aspect	6
2.4	Star Slots	9
2.4.1	Slot 3	9
2.4.2	Slot 4	10
2.4.3	Slot 5	11
2.4.4	Slot 6	12
2.4.5	Slot 7	13
2.5	FID Slots	14
2.5.1	Slot 0	14
2.5.2	Slot 1	15
2.5.3	Slot 2	16
3	Gratings	17
3.1	HEG Arm	17
3.2	MEG Arm	19
A	Summary	21
A.1	Status	21
A.2	Comments	21

1 Front

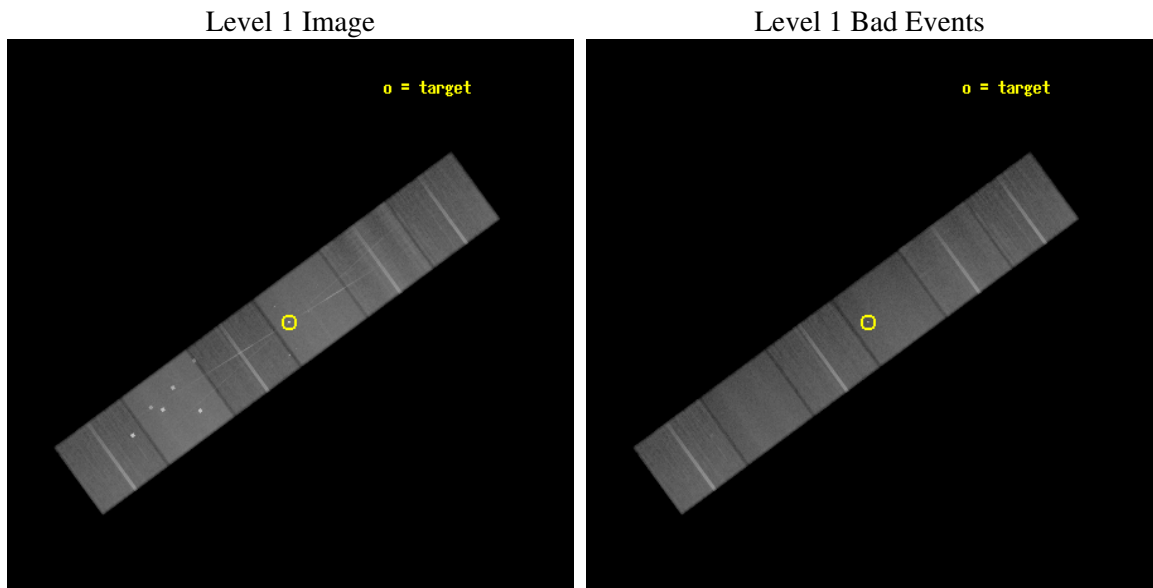
seq_num	701024
obs_id	5601
title	Understanding the accretion process in a Low-Luminosity AGN: is M81* a starved black hole?
observer	Dr. Claude Canizares
object	M81*
dtcycle	0
cycle	P
ra_targ	148.888333
dec_targ	69.065306
ra_nom	148.88219610285
dec_nom	69.064854078397
roll_nom	323.65456515797
revision	2
ontime	84134.399686575
livetime	83069.03925809
ontime4	84134.399686575
ontime5	84134.399686575
ontime6	84134.399686575
ontime7	84134.399686575
ontime8	84134.399686575
ontime9	84134.399686575
l2events	1019367



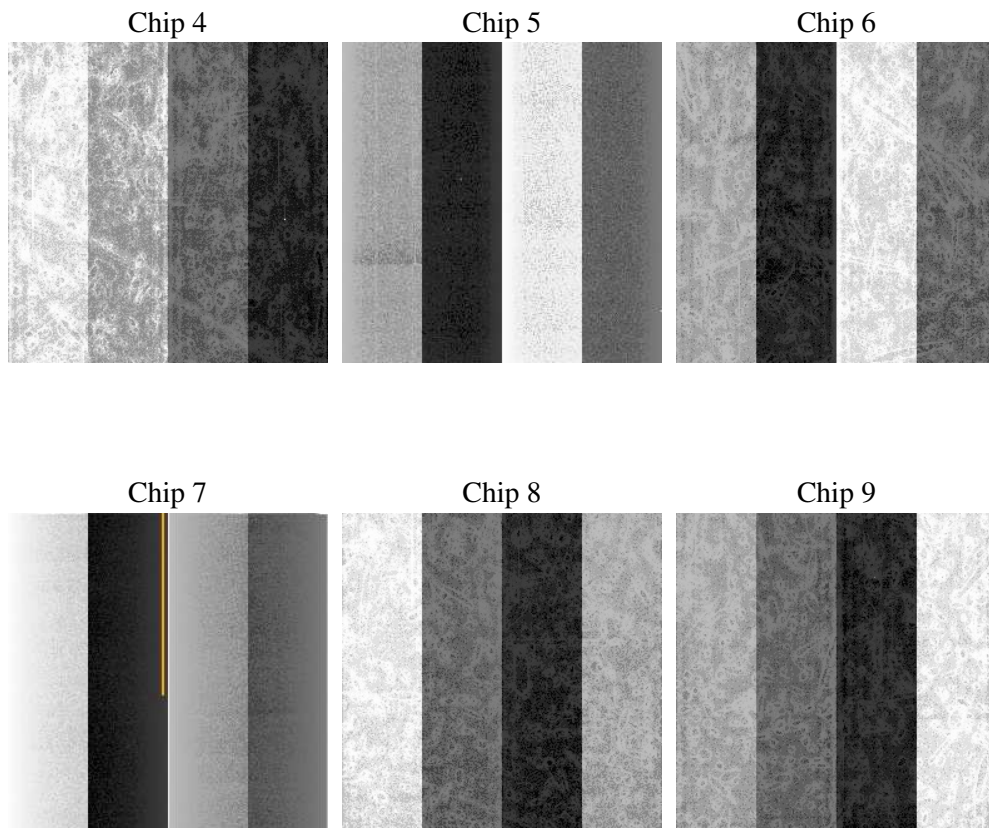
2 OBI

2.1 OBI

2.1.1 Images



2.1.2 Bias



2.1.3 Parameters

obi_num	0
ascdsver	7.6.7.1
caldsver	3.2.1
date	2006-03-15T17:50:26
revision	2

sched_exp_time	84000.000000
ontime	84431.296606123
ontime4	84431.296606123
ontime5	84431.296606123
ontime6	84431.296606123
ontime7	84431.296606123
ontime8	84431.296606123
ontime9	84431.296606123
l1events	4587511

2.1.4 Events

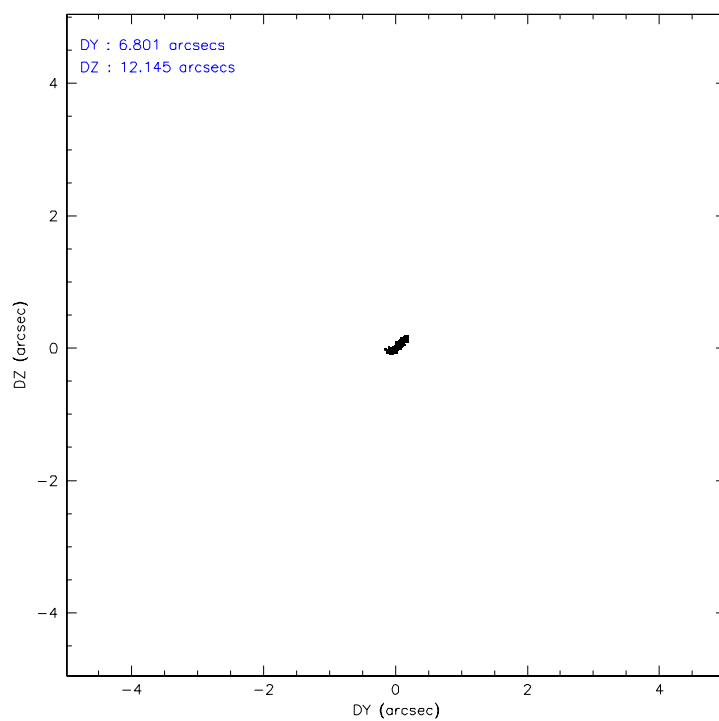
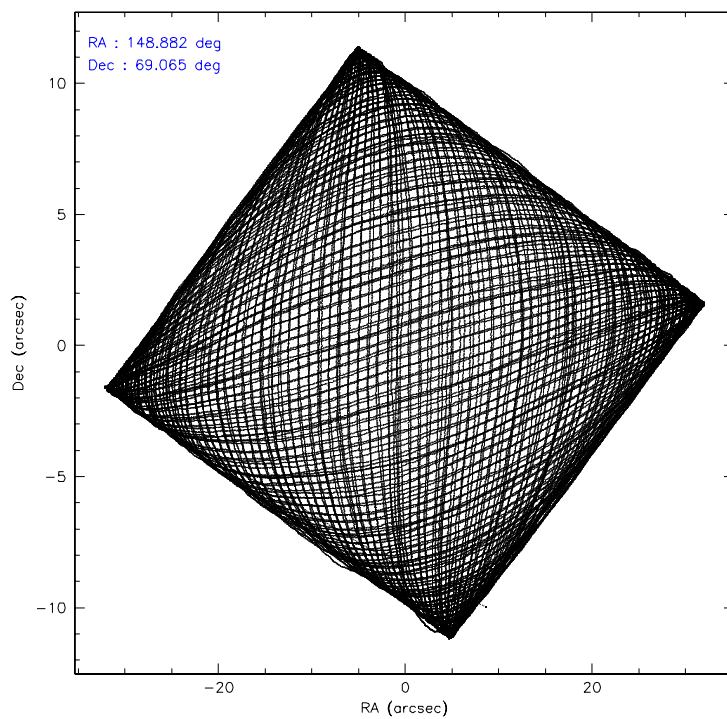
	ccd 4	ccd 5	ccd 6	ccd 7	ccd 8	ccd 9
level 1 events	703627	965503	639425	876734	788624	613598
rejected events	608682	522871	550634	528667	609901	536331
rejected %	86%	54%	86%	60%	77%	87%

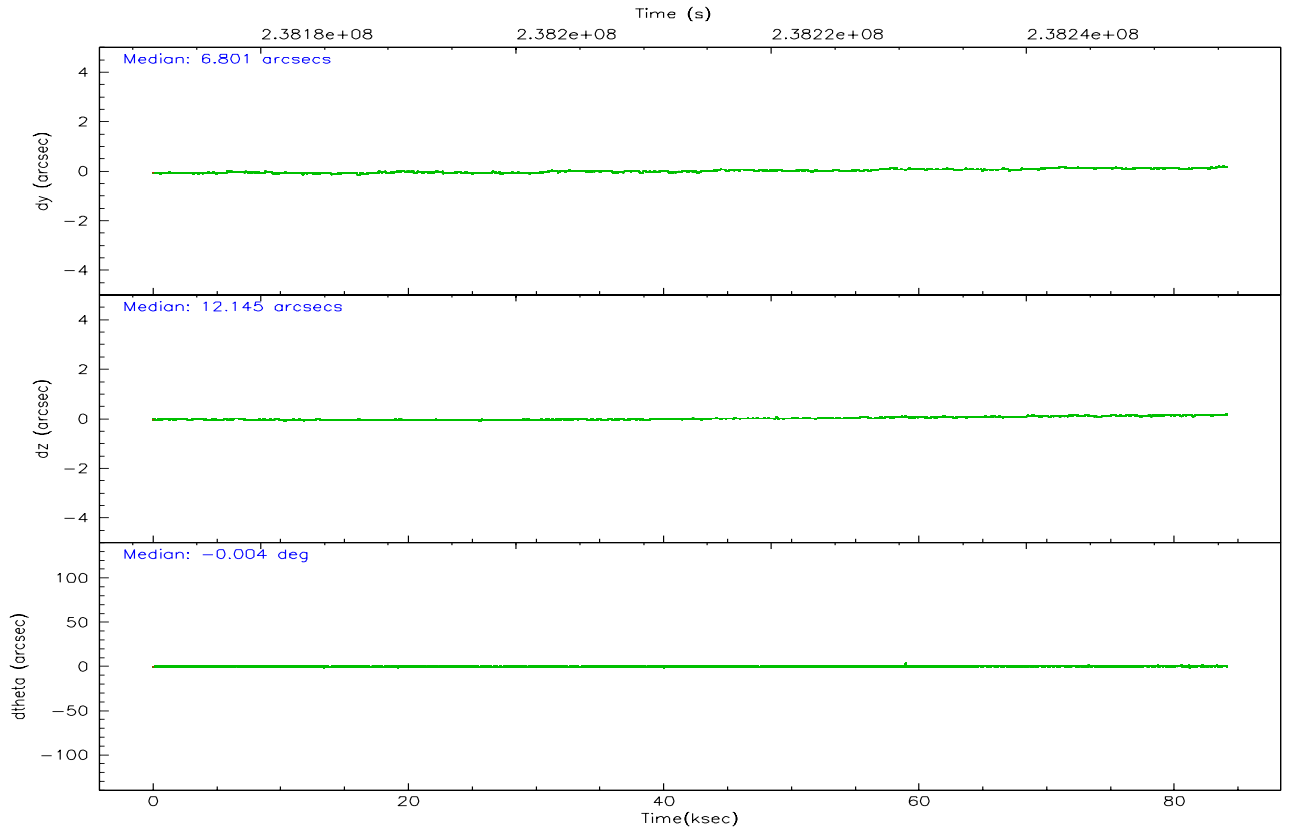
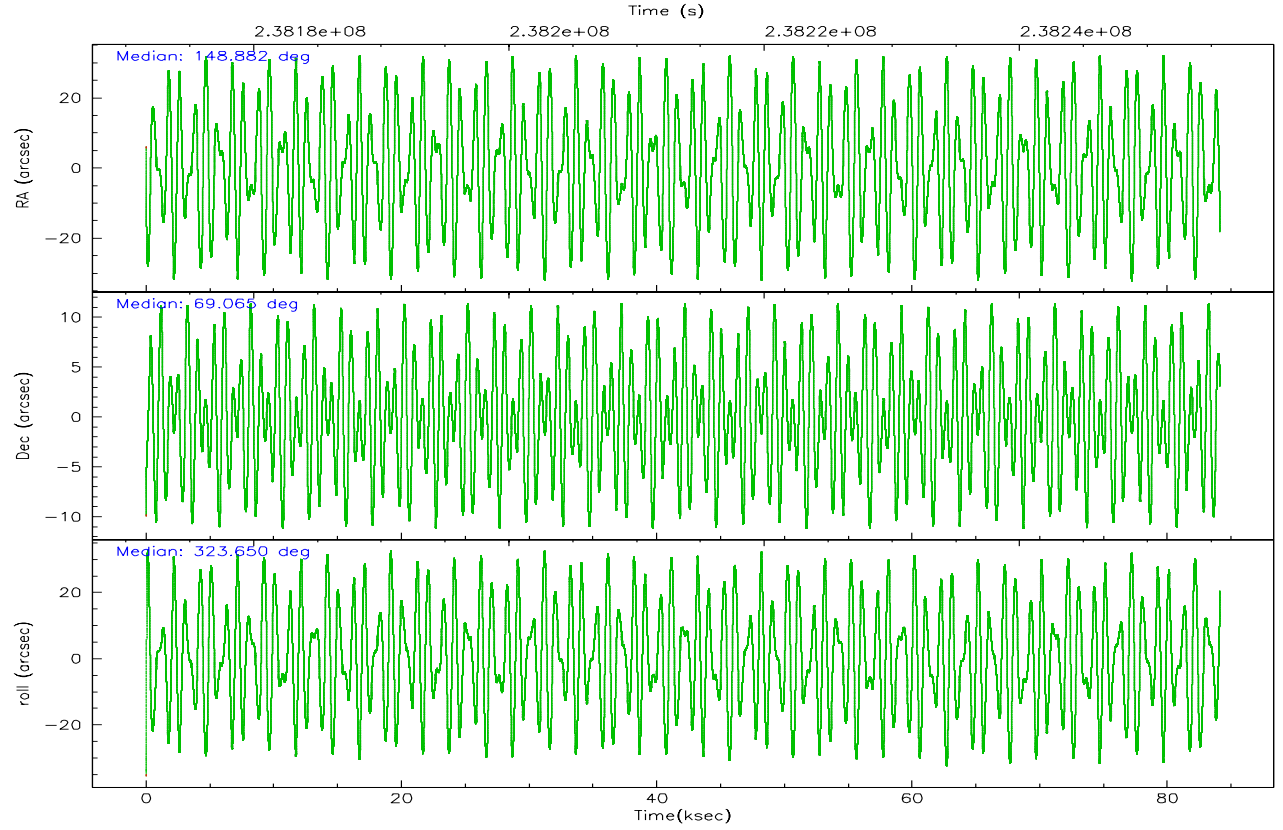
	ccd 4	ccd 5	ccd 6	ccd 7	ccd 8	ccd 9
grade 0 events	51158	58766	40672	21770	58986	32086
	7%	6%	6%	2%	7%	5%
grade 1 events	683	747	341	672	519	365
	0%	0%	0%	0%	0%	0%
grade 2 events	16613	130267	17348	88528	39001	15366
	2%	13%	2%	10%	4%	2%
grade 3 events	7854	9466	7843	18106	18845	7724
	1%	0%	1%	2%	2%	1%
grade 4 events	7456	8848	7532	17670	17421	7495
	1%	0%	1%	2%	2%	1%
grade 5 events	28440	44916	28754	54732	37946	30947
	4%	4%	4%	6%	4%	5%
grade 6 events	12203	236985	15705	203196	44985	14842
	1%	24%	2%	23%	5%	2%
grade 7 events	579220	475508	521230	472060	570921	504773
	82%	49%	81%	53%	72%	82%

2.2 Compared Parameters

Parameter	Planned	Actual	Parameter	Planned	Actual
Instrument	ACIS	ACIS	Obspar format version number	6	6
Detector	ACIS-456789	ACIS-456789	Obspar file type	PREDICTED	ACTUAL
Grating	HETG	HETG	Obspar update status	NONE	UPDATED
Data mode	FAINT	FAINT	On-chip summing requested	N	N
Observation mode	POINTING	POINTING	Subarray requested	NONE	NONE
Pointing RA	148.806388	148.8821961028457	Alternating exposures requested	N	N
Pointing Dec	69.067477	69.06485407839702	Primary exposure time	0.000000	3.2
Pointing Roll	323.568750	323.6545651579694			
SIM focus pos (mm)	-0.684267	-0.6828225247311905			
SIM defocus (mm)	0	0.001444936568705701			
SIM translation stage pos (mm)	-190.132523	-190.1425803651734			
SIM translation stage offset (mm)	0	0.01005778216563158			
Observation start time	238171705.184000	238170363.358			
Observation start date	2005-07-19T14:47:21	2005-07-19T14:26:03			
Observation end time	238255705.184000	238256658.62445			
Observation end date	2005-07-20T14:07:21	2005-07-20T14:24:18			
Read mode	TIMED	TIMED			

2.3 Aspect



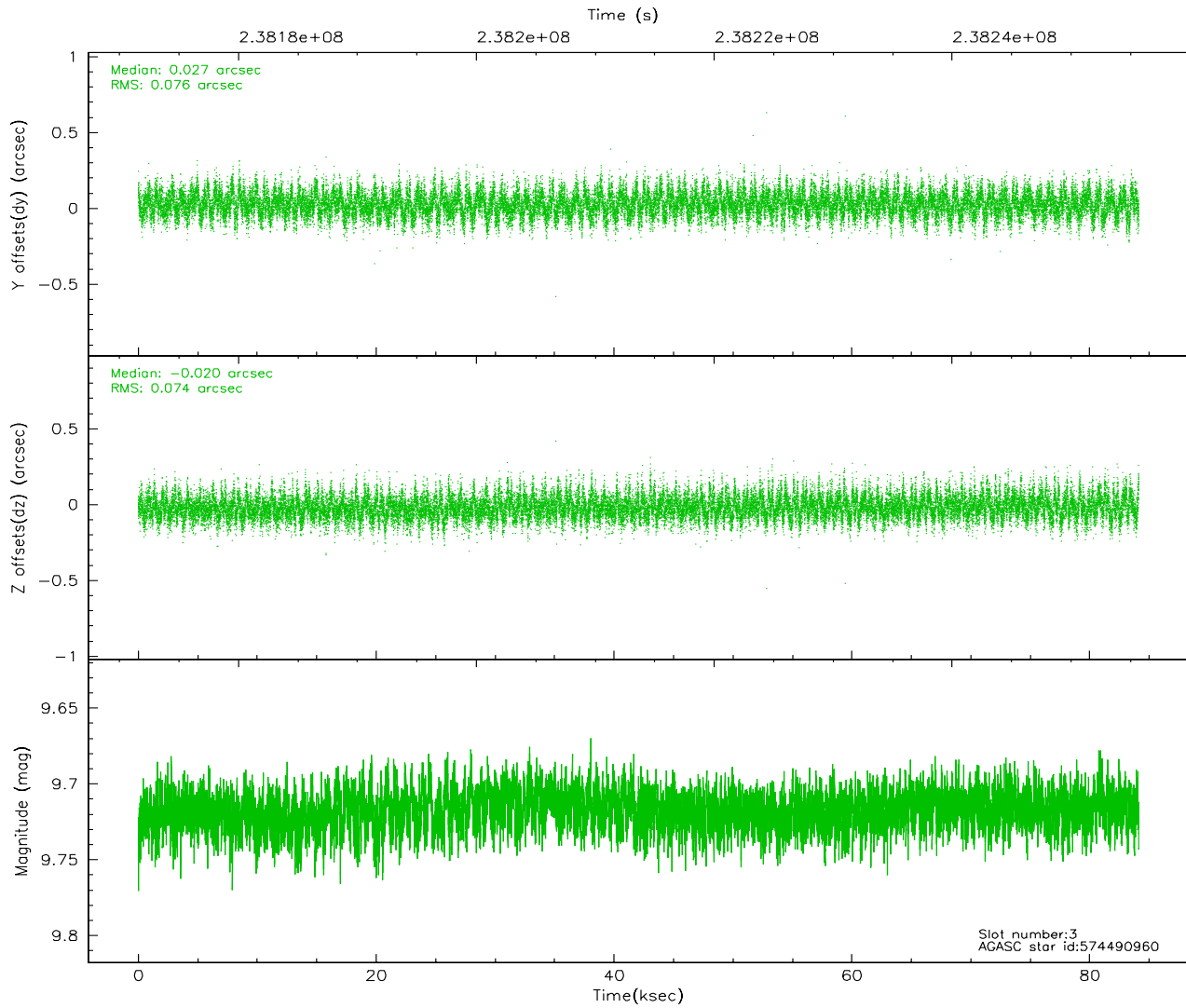
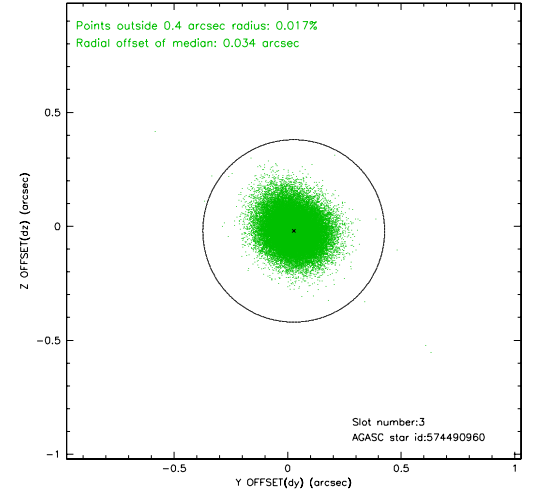
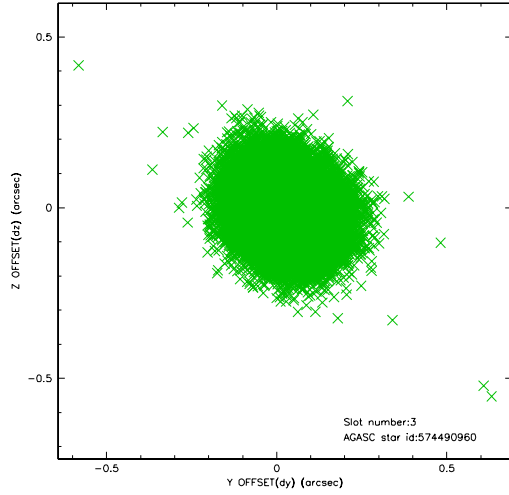


Slot Statistics

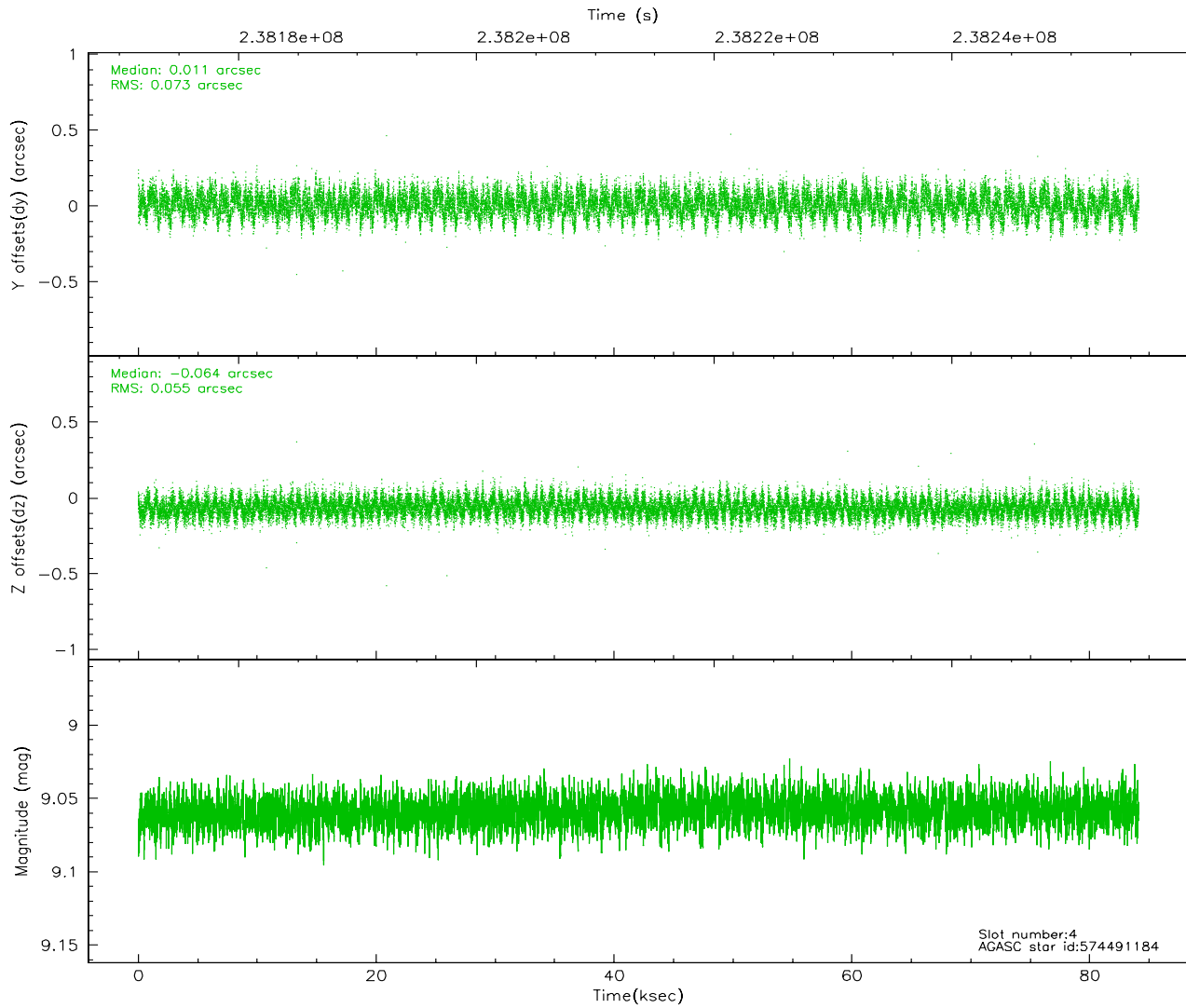
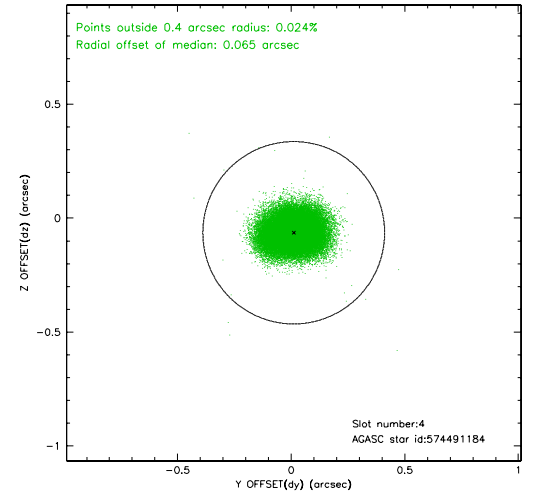
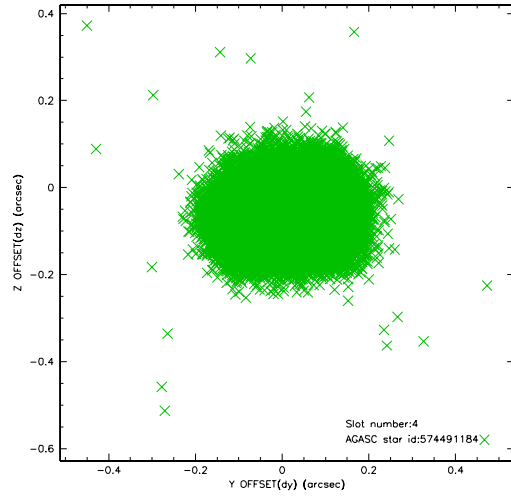
slot	status	id	mag	n_pts	med_dy	med_dz	dr1	dr2	ra	dec	mean_y	mean_z
0	FID	ACIS-S-2	7.10	20522	-0.012	-0.001	0.008	0.012	0.000000	0.000000	-759.58	-1733.41
1	FID	ACIS-S-4	7.20	20521	0.012	0.006	0.005	0.009	0.000000	0.000000	2153.77	175.14
2	FID	ACIS-S-5	7.23	20520	-0.031	0.003	0.007	0.012	0.000000	0.000000	-1812.53	168.74
3	GUIDE	574490960	9.72	41006	0.027	-0.020	0.113	0.182	148.185918	69.658768	-1890.88	1254.76
4	GUIDE	574491184	9.06	41021	0.011	-0.064	0.098	0.157	148.582453	69.768699	-1723.60	1866.18
5	GUIDE	574491280	9.33	40945	-0.012	-0.047	0.120	0.192	148.611567	69.450135	-1016.39	961.92
6	GUIDE	574496312	10.30	40991	0.057	0.049	0.167	0.276	149.547505	68.718299	1522.59	-431.01
7	GUIDE	574500920	10.08	40999	-0.084	0.097	0.250	0.392	147.014605	68.742334	-1206.04	-2302.62

2.4 Star Slots

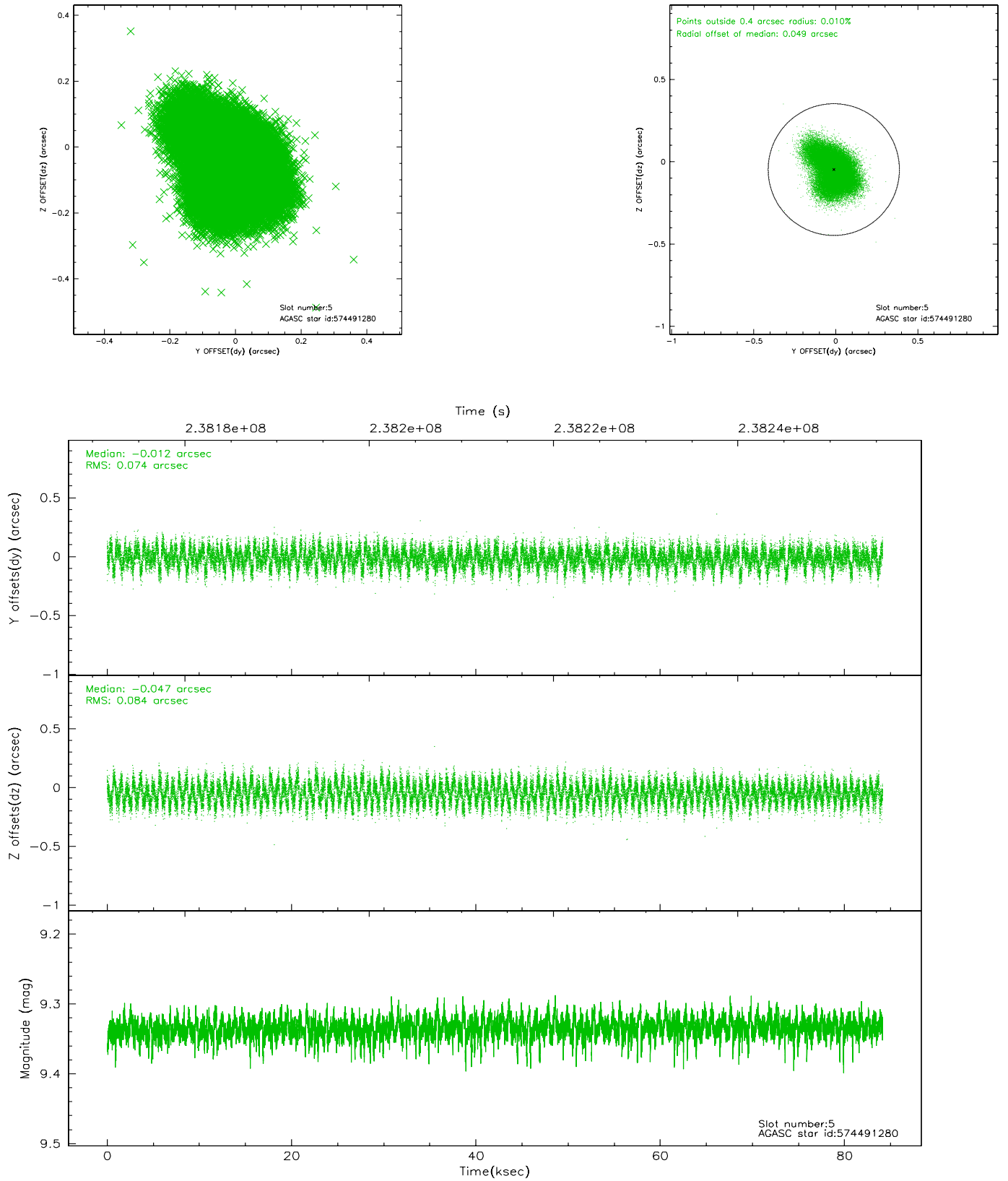
2.4.1 Slot 3



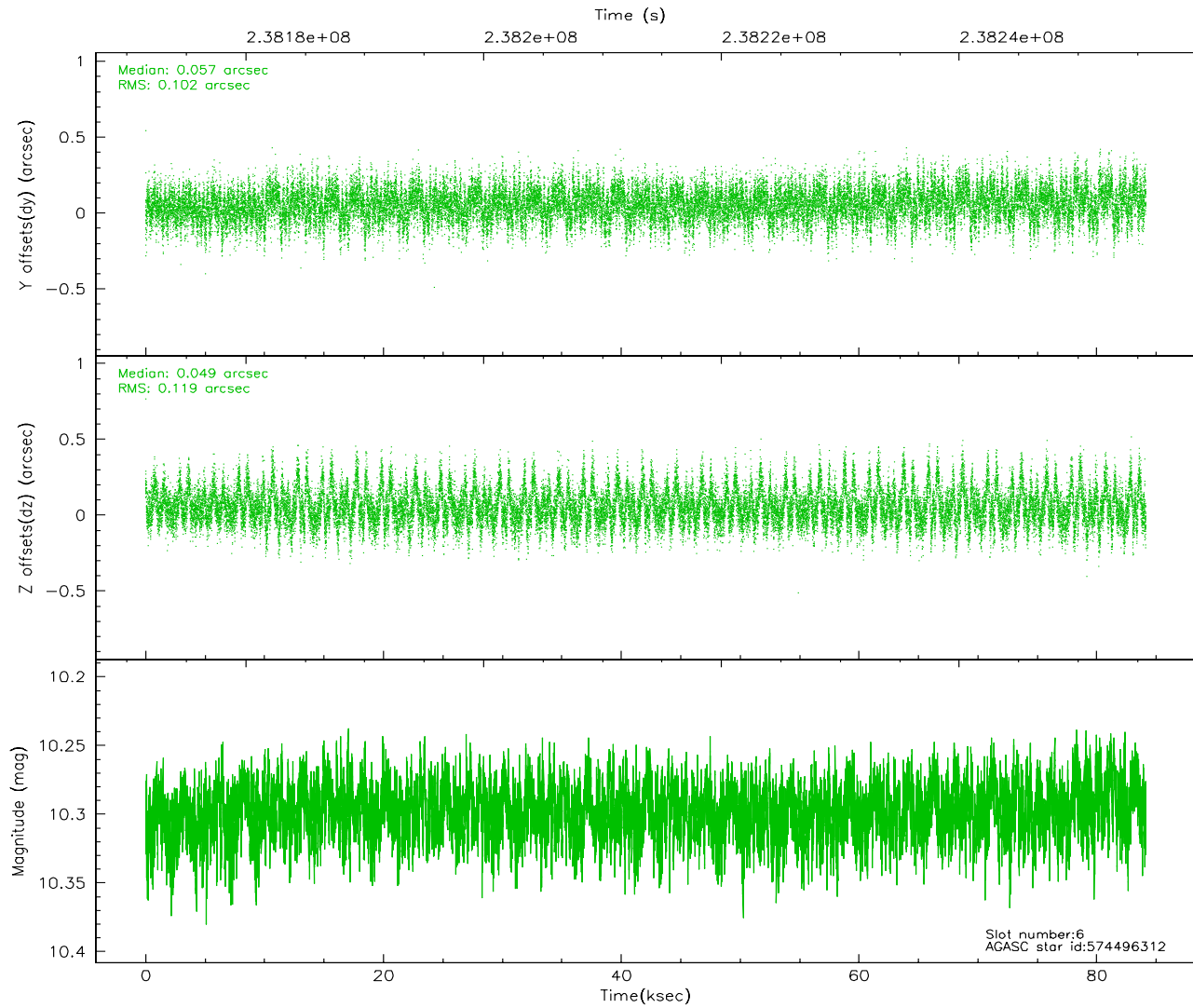
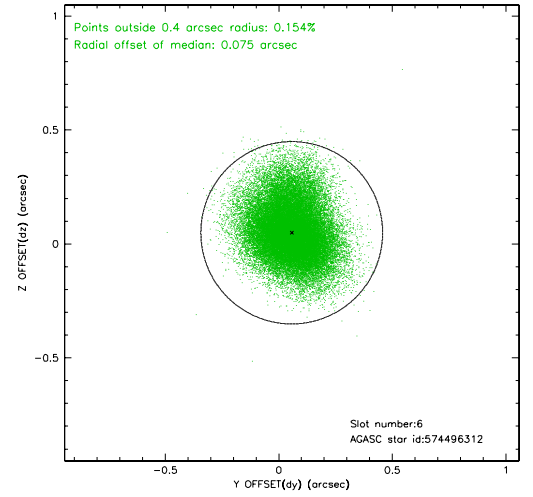
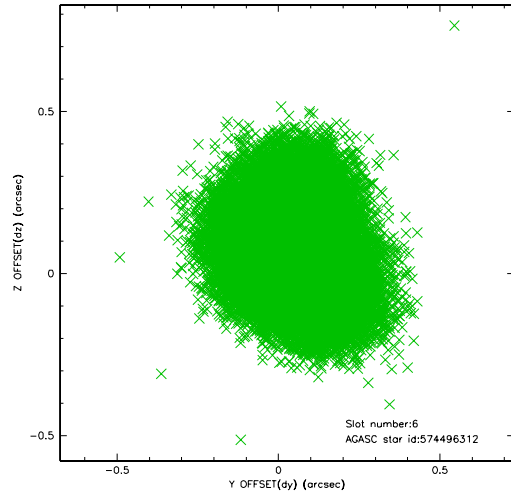
2.4.2 Slot 4



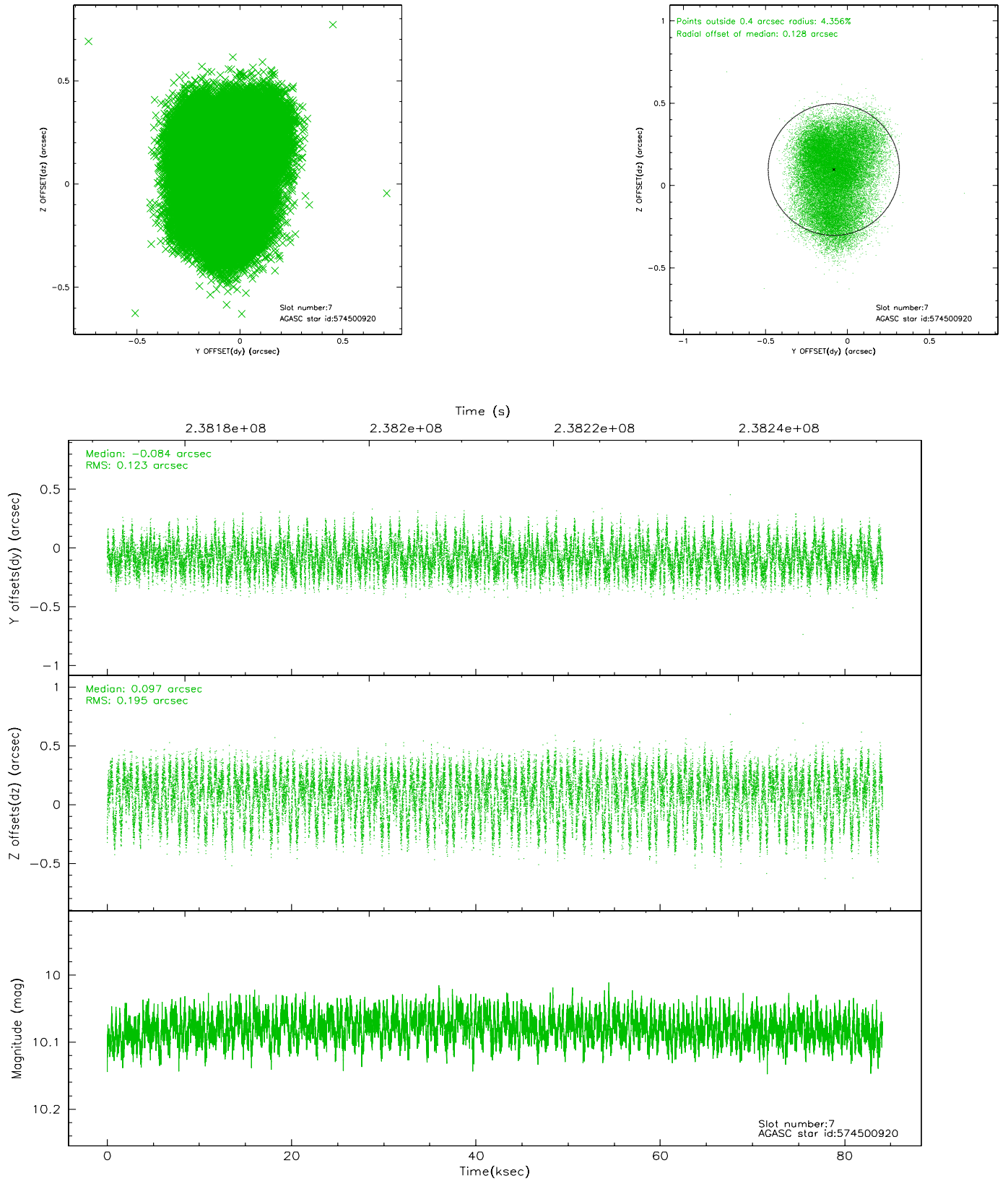
2.4.3 Slot 5



2.4.4 Slot 6

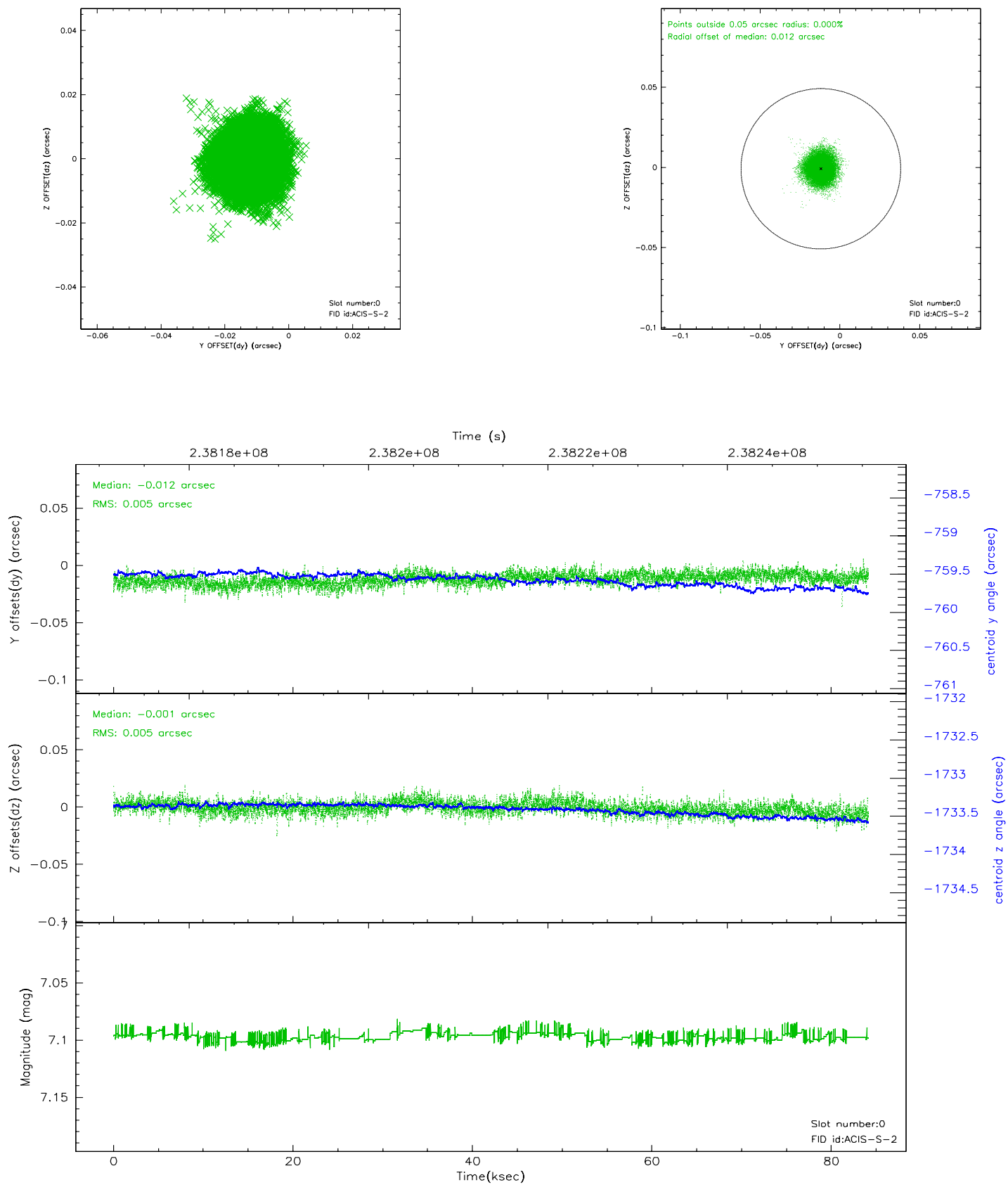


2.4.5 Slot 7

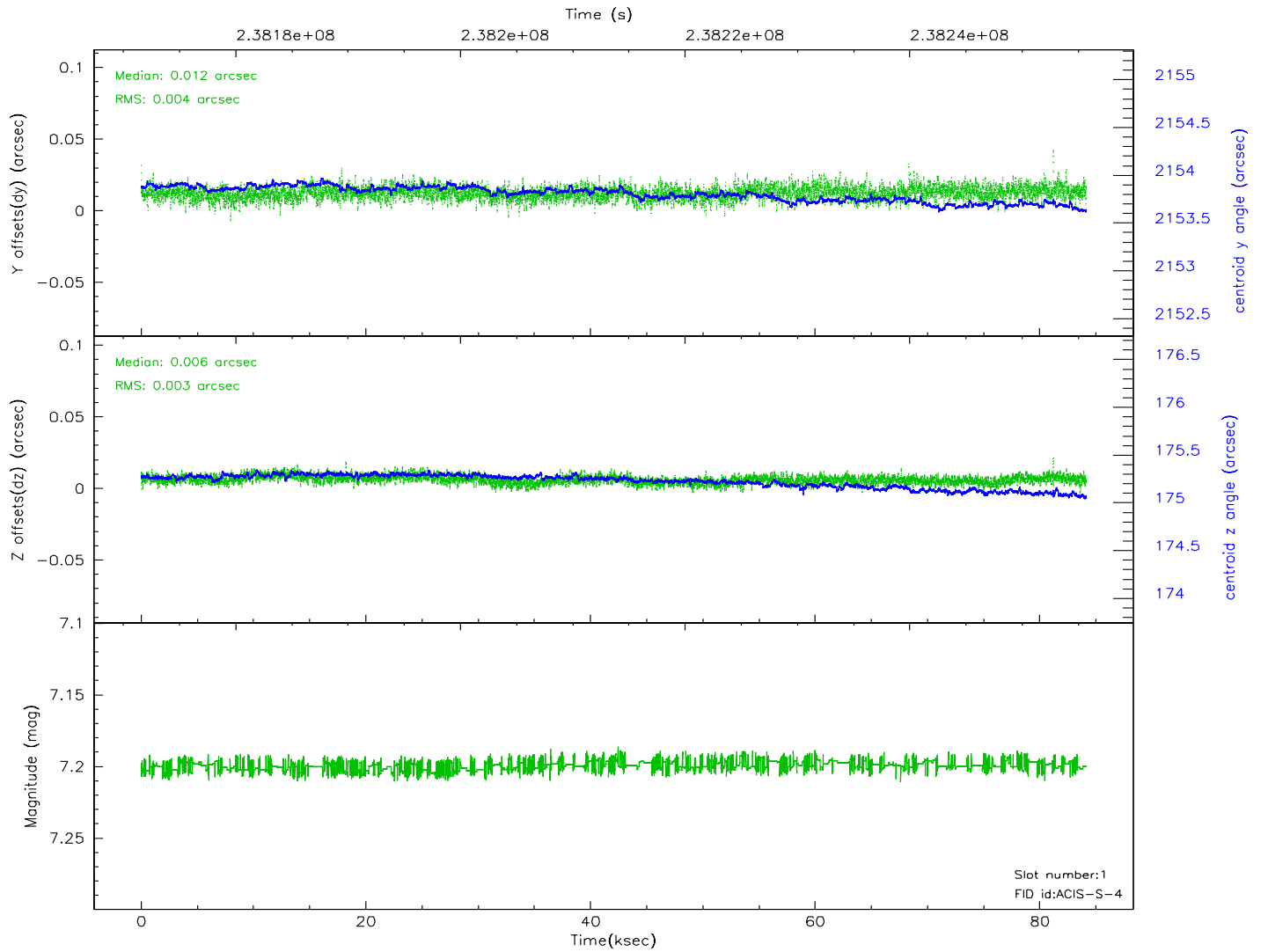
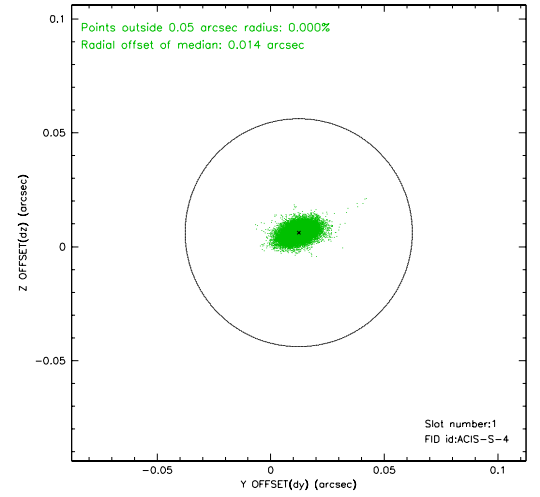
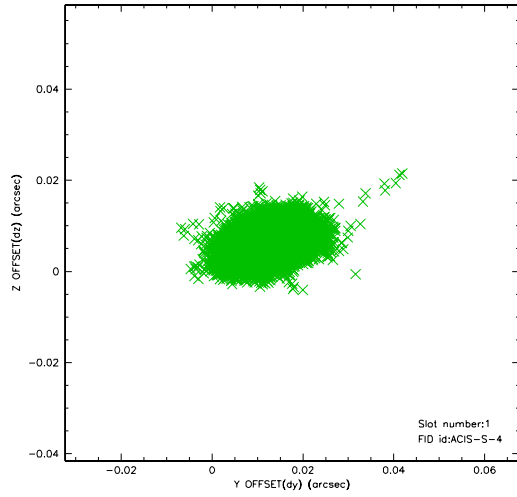


2.5 FID Slots

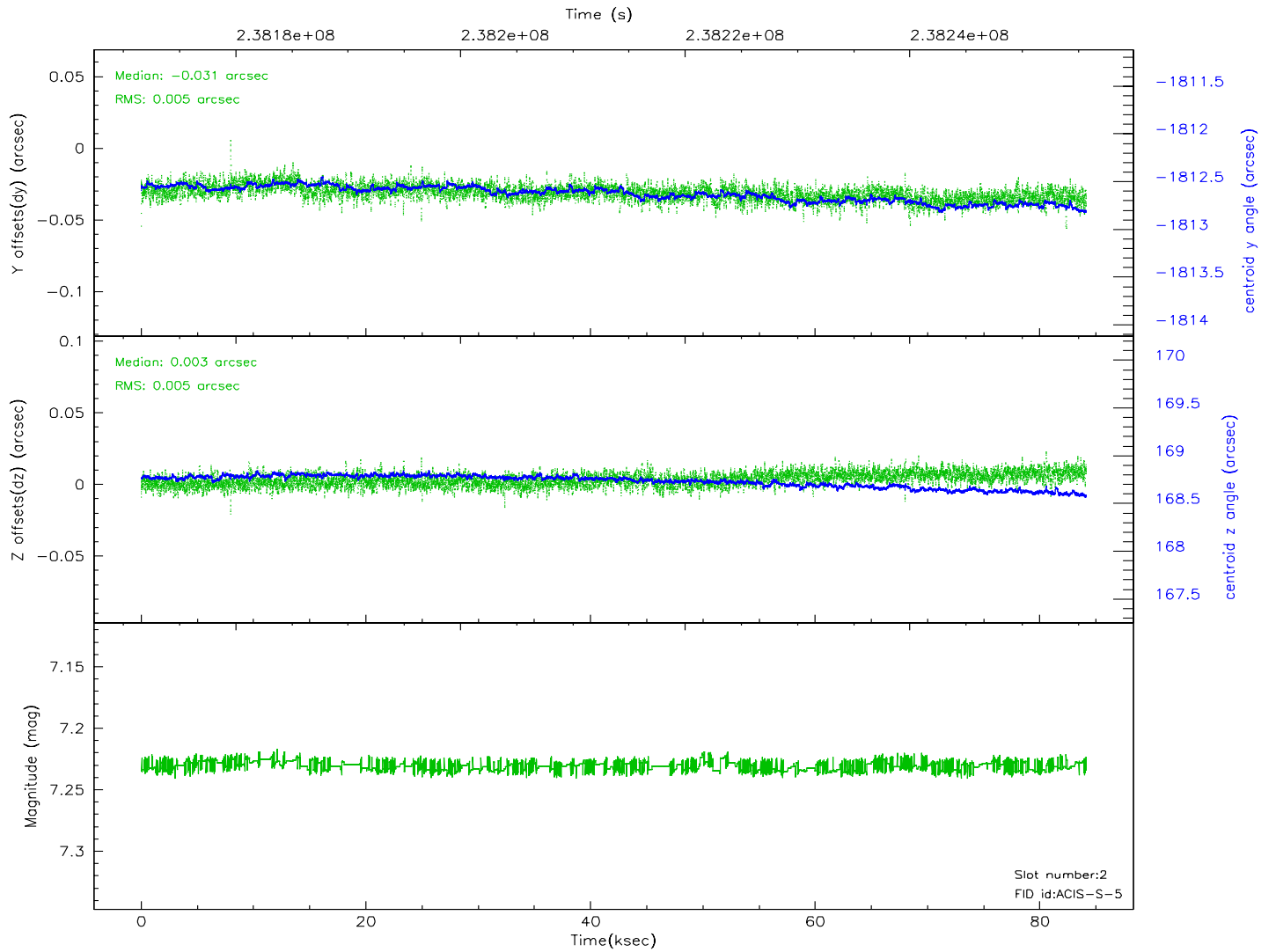
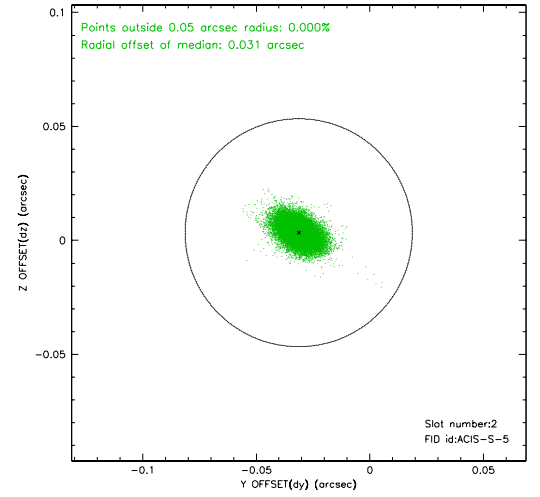
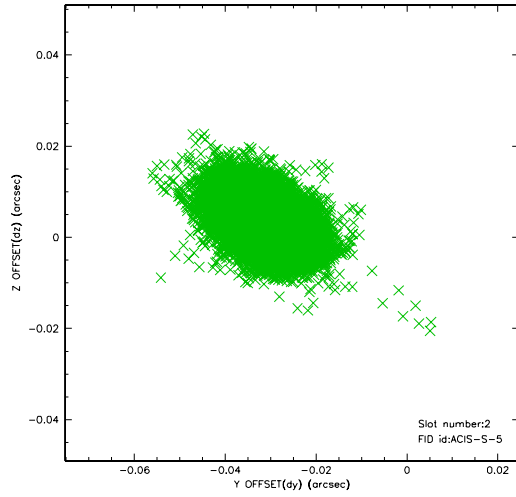
2.5.1 Slot 0



2.5.2 Slot 1

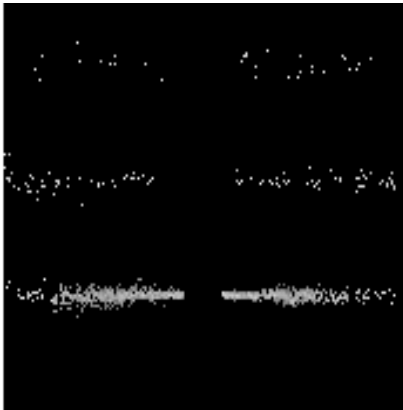


2.5.3 Slot 2

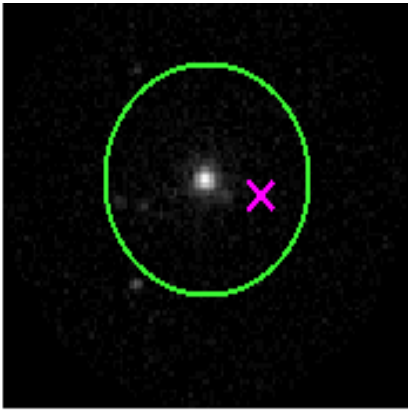


3 Gratings

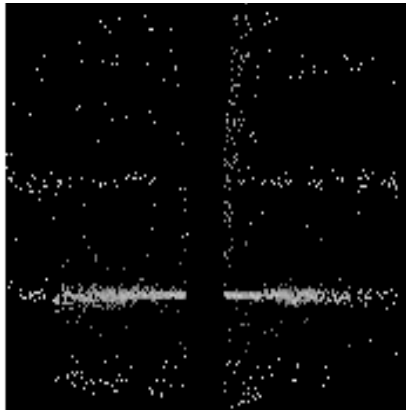
3.1 HEG Arm



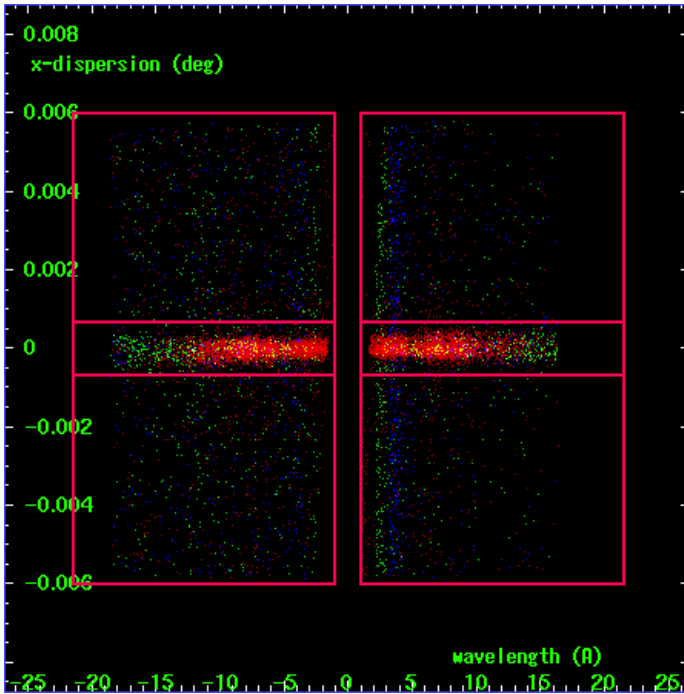
HEG Order Sort 123



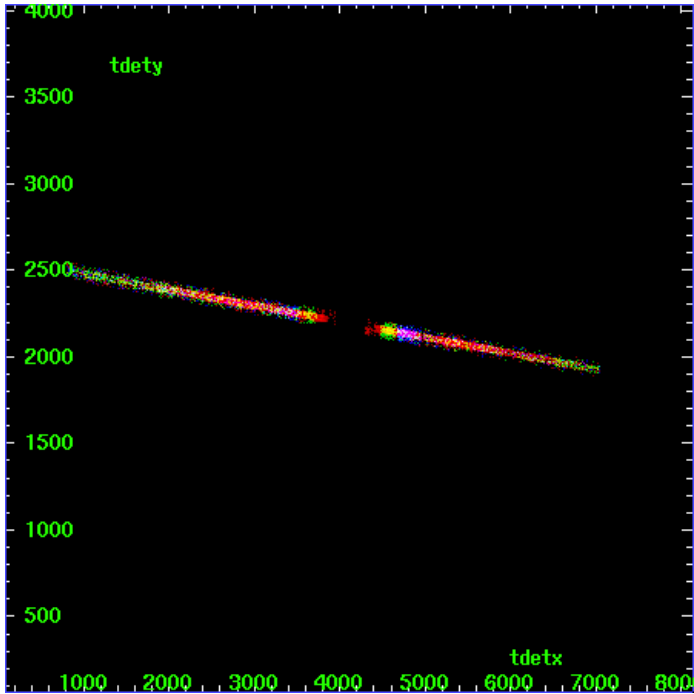
HEG Zero Order



HEG Order Sort ALL

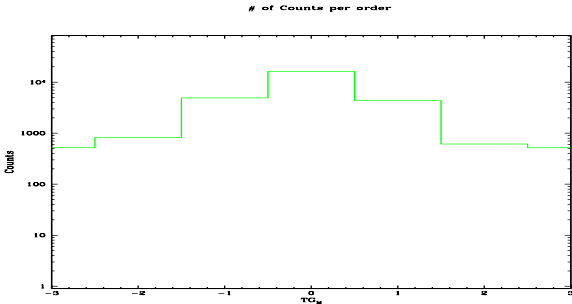


Spot Image HEG

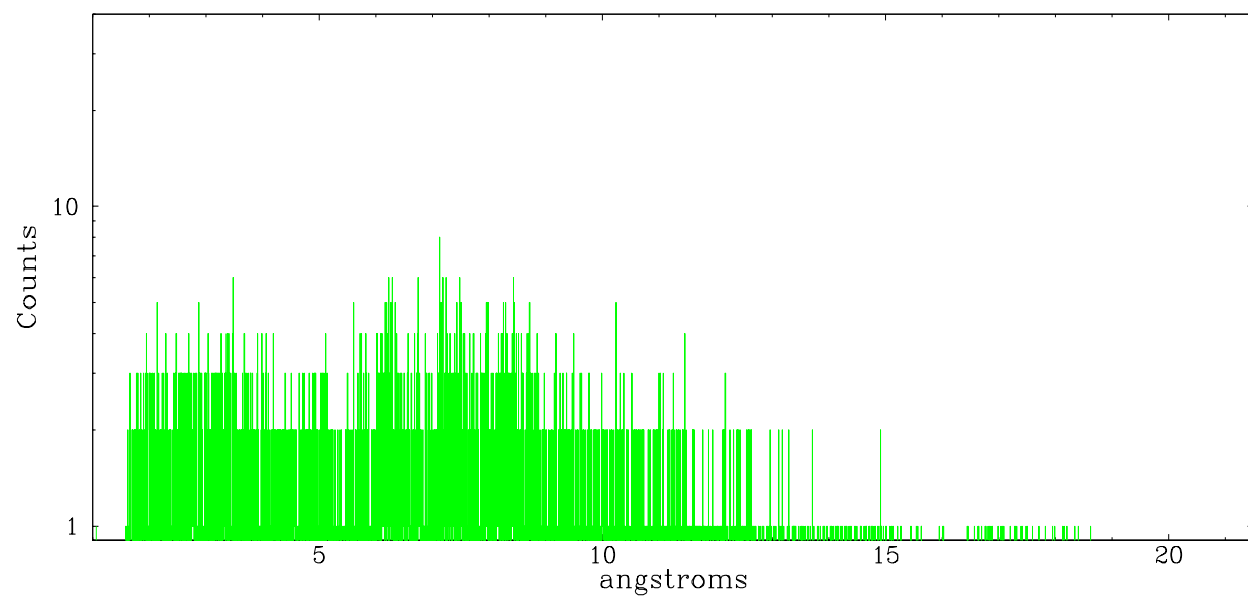


Full Detector HEG

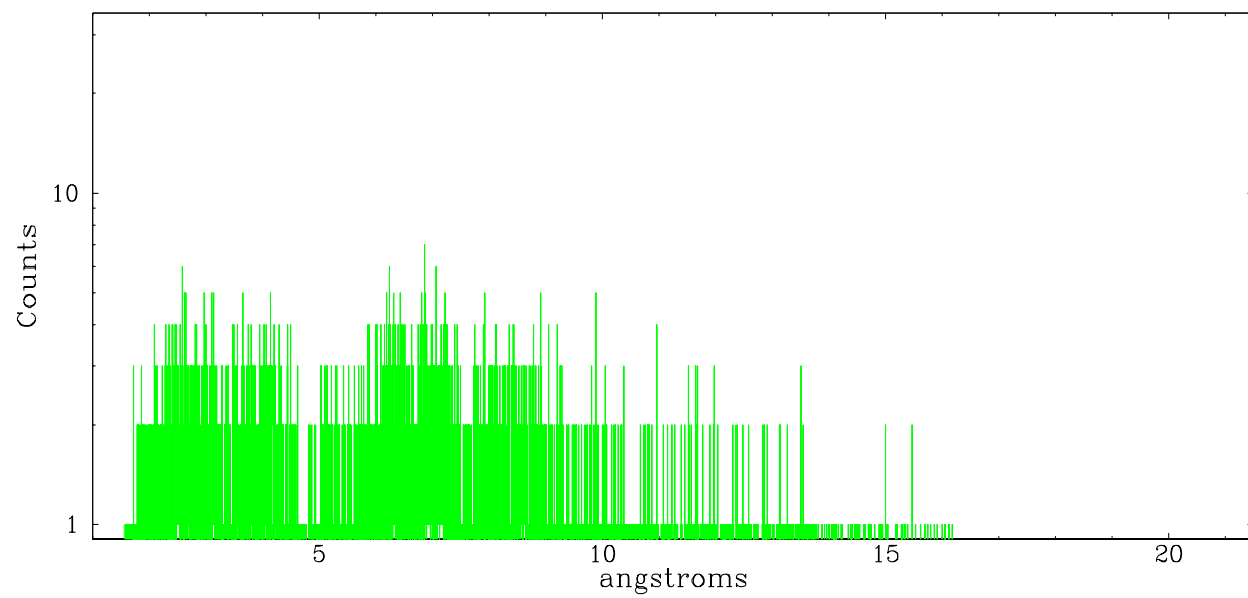
	order -3	order -2	order -1	order 0	order 1	order 2	order 3
Events	521	827	4899	16318	4385	616	517



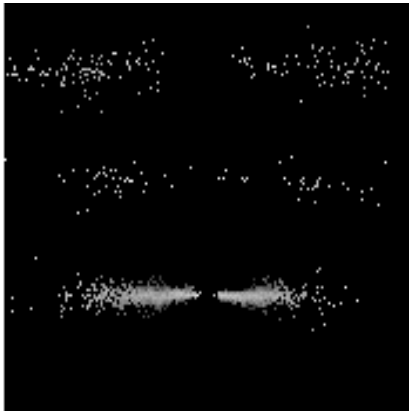
heg order -1



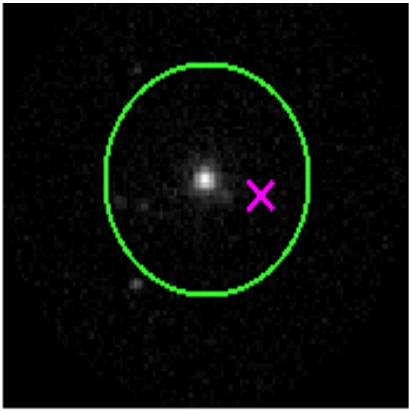
heg order +1



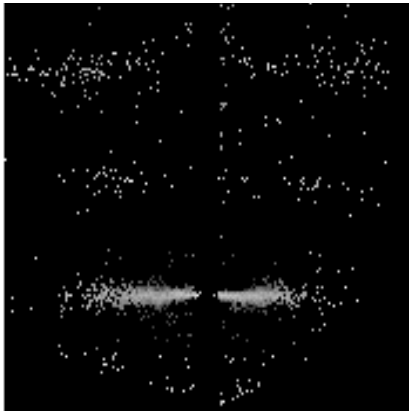
3.2 MEG Arm



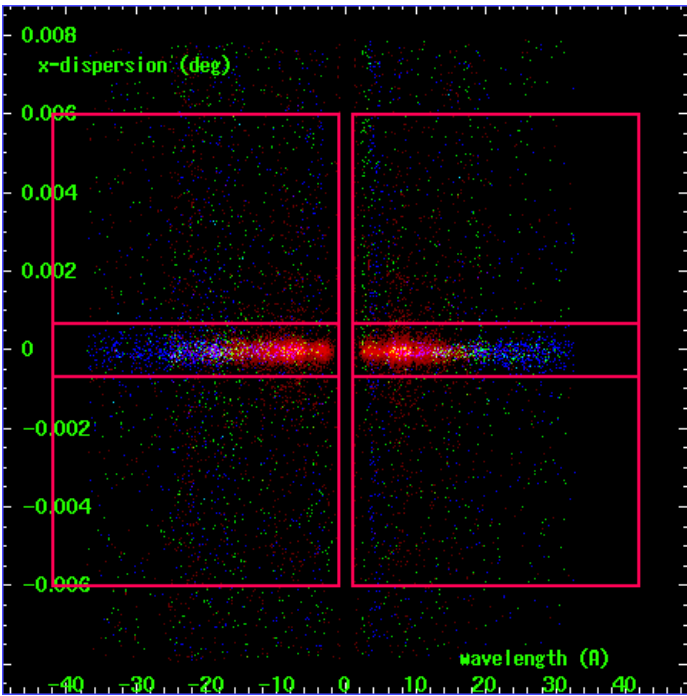
MEG Order Sort 123



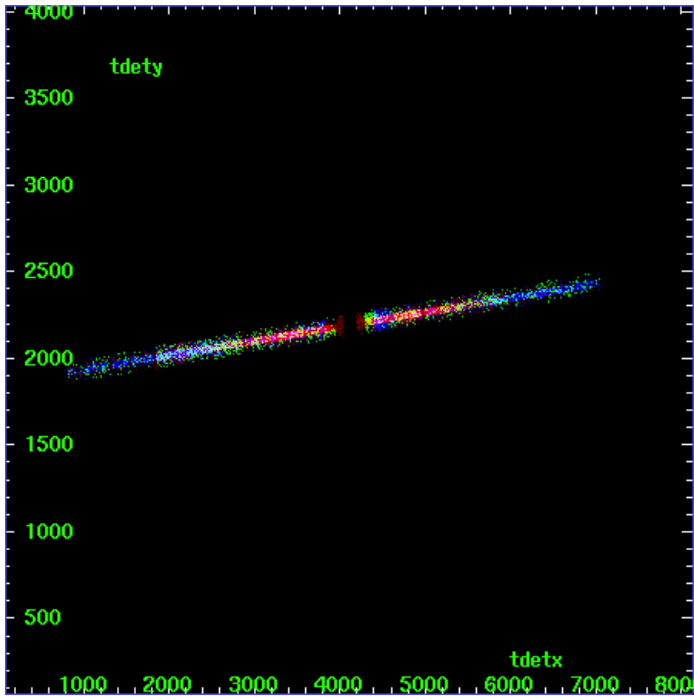
MEG Zero Order



MEG Order Sort ALL

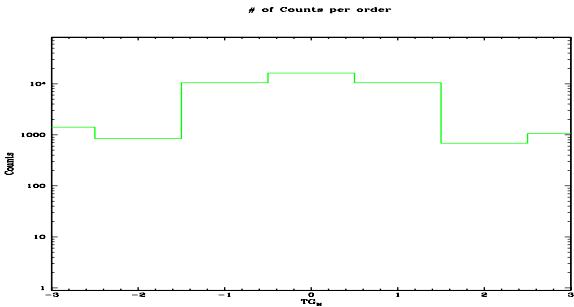


Spot Image MEG

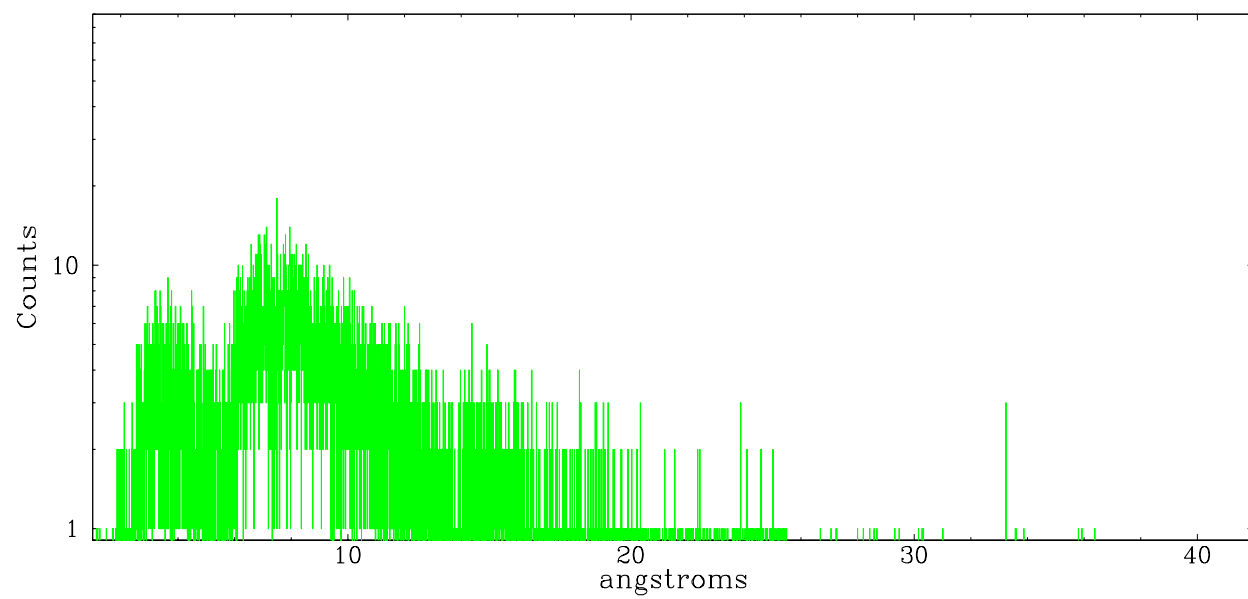


Full Detector MEG

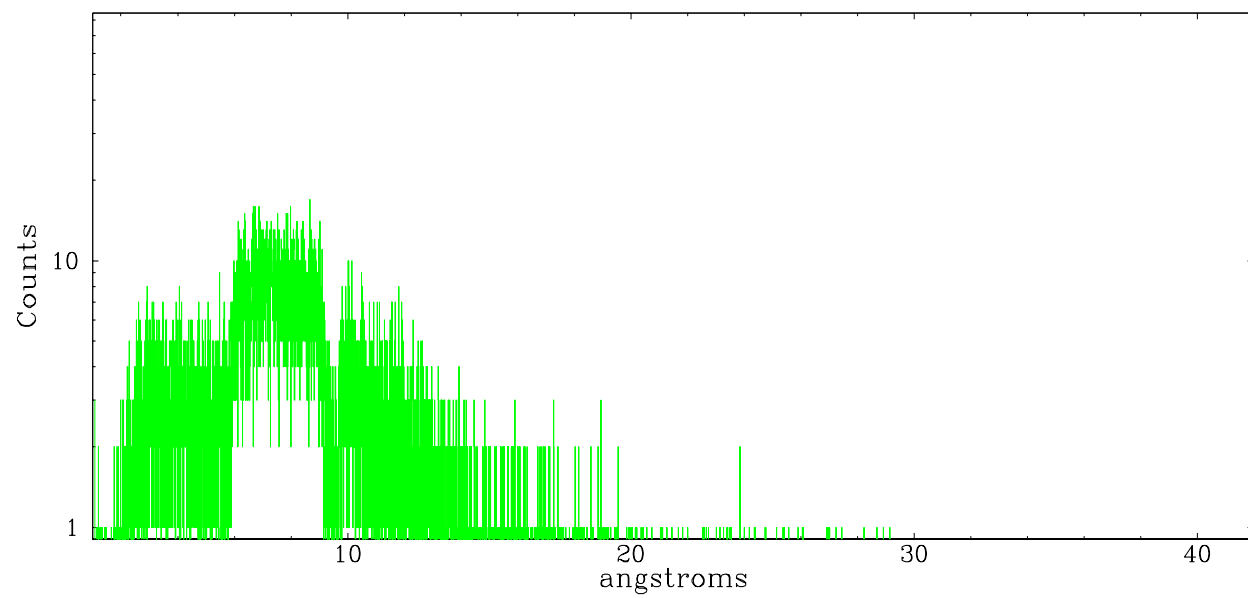
	order -3	order -2	order -1	order 0	order 1	order 2	order 3
Events	1409	843	10522	16318	10524	683	1064



meg order -1



meg order +1



A Summary

A.1 Status

V&V Scientist	Joy Nichols
V&V Date (YYYY-MM-DD)	2006.03.16
V&V Edition	1
V&V Disposition and Status	OK
V&V Charge Time	84.13439

A.2 Comments