

V&V Reference Report

L2 ASCDS Version : 8.4.3

Observation 55631 - L2 Version 2
Chandra X-Ray Center

L2 Processing Date : Feb 4 2012

Contents

1	Front	2
2	OBI	3
2.1	OBI	3
2.1.1	Images	3
2.1.2	Bias	3
2.1.3	Parameters	4
2.1.4	Events	4
2.2	Compared Parameters	5
2.3	Star Slots	6
2.4	FID Slots	6
A	Summary	7
A.1	Status	7
A.2	Comments	7

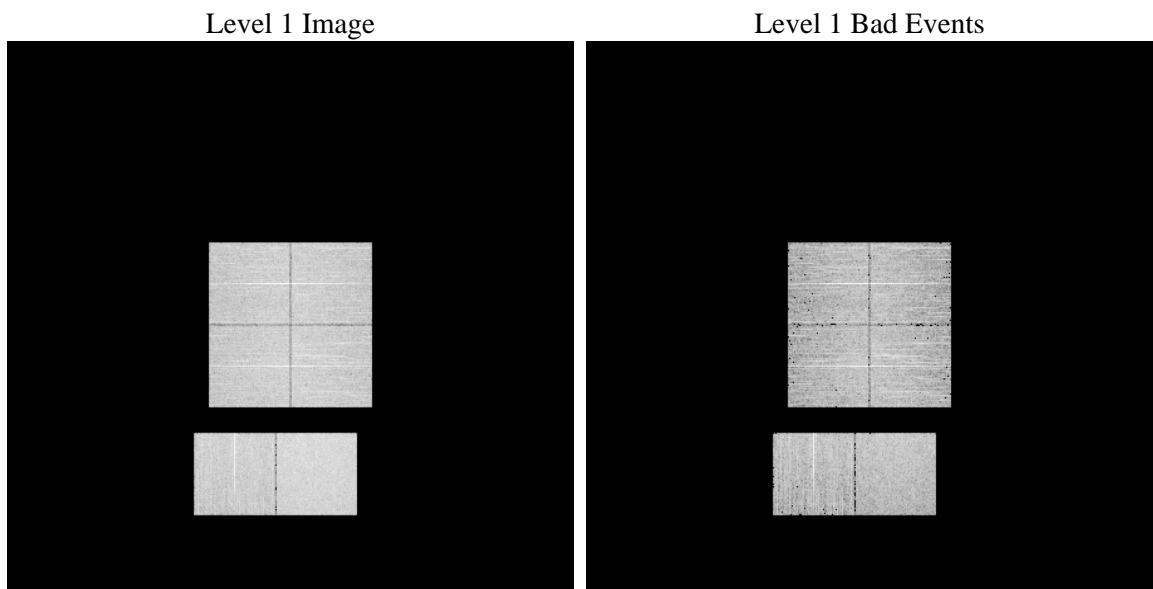
1 Front

seq_num	 	Sequence number
obs_id	55631	Observation id
title	ACIS-012367 diagnostics	Proposal title
observer	CHANDRA engineering request/realtime commanding	Principal investig
object	 	Source name
dtcycle	0	
cycle	P	events from which exps? Prim/Second/Both
ra_targ	0.0	Observer's specified target RA [deg]
dec_targ	0.0	Observer's specified target Dec [deg]
ra_nom	176.99696541286	Nominal RA [deg]
dec_nom	-0.47151613500471	Nominal Dec [deg]
roll_nom	63.109133800542	Nominal Roll [deg]
revision	2	Processing version of data
ontime	6248.2787386775	Sum of GTIs [s]
livetime	6169.1592710266	Livetime [s]
ontime0	6248.2376986742	Sum of GTIs [s]
ontime1	6248.1966586709	Sum of GTIs [s]
ontime2	6248.1556186676	Sum of GTIs [s]
ontime3	6248.3197786808	Sum of GTIs [s]
ontime6	6248.1145786643	Sum of GTIs [s]
ontime7	6248.2787386775	Sum of GTIs [s]
l2events	252318	Number of level 2 events

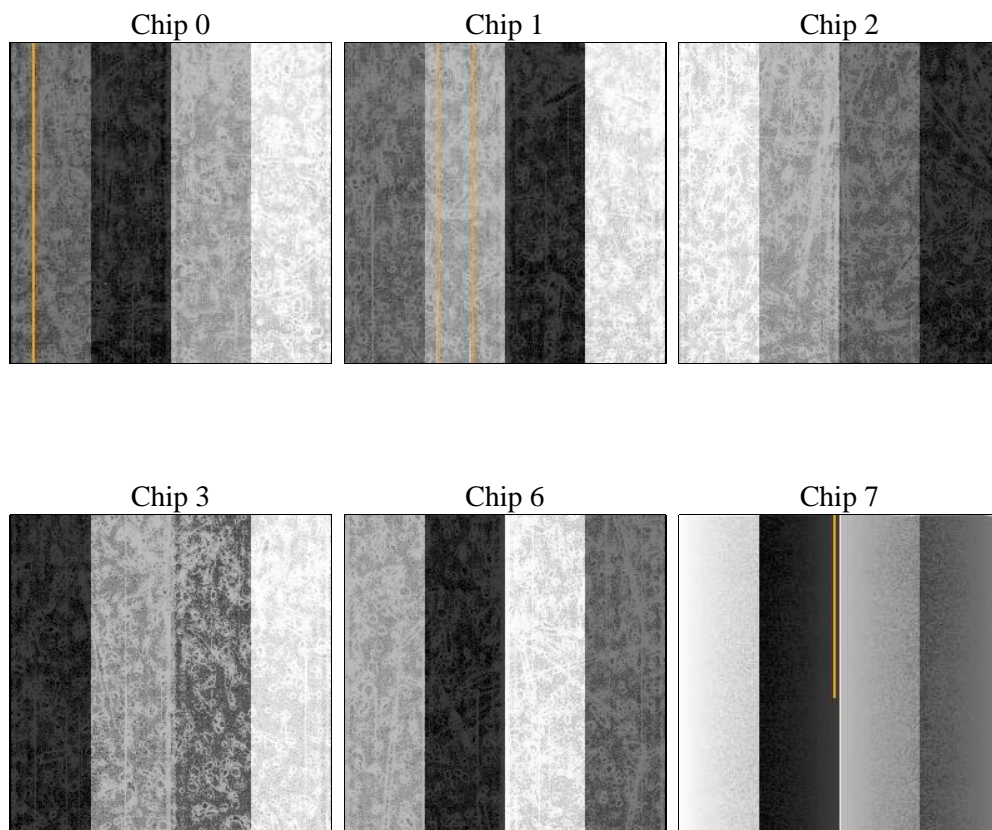
2 OBI

2.1 OBI

2.1.1 Images



2.1.2 Bias



2.1.3 Parameters

obi_num	0	Obi number	sched_exp_time	0.0	[s] Scheduled observation exposure time
ascdsver	8.4.3	Processing system revision	ontime	6248.2787386775	Sum of GTIs [s]
caldbver	4.4.7	 	ontime0	6248.2376986742	Sum of GTIs [s]
date	2012-02-04T20:19:48	Date and time of file creation	ontime1	6248.1966586709	Sum of GTIs [s]
revision	2	Processing version of data	ontime2	6248.1556186676	Sum of GTIs [s]
			ontime3	6248.3197786808	Sum of GTIs [s]
			ontime6	6248.1145786643	Sum of GTIs [s]
			ontime7	6248.2787386775	Sum of GTIs [s]
			l1events	543016	Number of level 1 events

2.1.4 Events

	ccd 0	ccd 1	ccd 2	ccd 3	ccd 6	ccd 7		ccd 0	ccd 1	ccd 2	ccd 3	ccd 6	ccd 7
level 1 events	83338	83534	84467	88922	89652	113103	grade 0 events	20850	20781	21672	21583	21151	11026
rejected events	43457	43102	44238	48878	48215	48098		25%	24%	25%	24%	23%	9%
rejected %	52%	51%	52%	54%	53%	42%	grade 1 events	138	106	164	157	139	98
								0%	0%	0%	0%	0%	0%
							grade 2 events	7412	7799	7015	7066	7596	14085
								8%	9%	8%	7%	8%	12%
							grade 3 events	2710	2736	2778	2773	2708	5805
								3%	3%	3%	3%	3%	5%
							grade 4 events	2754	2662	2769	2773	2798	6021
								3%	3%	3%	3%	3%	5%
							grade 5 events	2698	2842	2633	3071	2990	7539
								3%	3%	3%	3%	3%	6%
							grade 6 events	6155	6454	5995	5849	7184	28068
								7%	7%	7%	6%	8%	24%
							grade 7 events	40621	40154	41441	45650	45086	40461
								48%	48%	49%	51%	50%	35%

2.2 Compared Parameters

Parameter	Planned	Actual	Parameter	Planned	Actual
Instrument	ACIS	ACIS	Obspar format version number	7	7
Detector	ACIS-012367	ACIS-012367	Obspar file type	PREDICTED	ACTUAL
Grating	NONE	NONE	Obspar update status	NONE	UPDATED
Data mode	FAINT	FAINT	Number of optional ACIS chips dropped	0	0
Observation mode	SECONDARY	SECONDARY	On-chip summing requested	N	N
[deg] Pointing RA	0	176.9969654128631	Subarray requested	NONE	NONE
[deg] Pointing Dec	0	-0.4715161350047104	Alternating exposures requested	N	N
[deg] Pointing Roll	0.0	63.10913380054247	[s] Primary exposure time	3.2	3.2
[mm] SIM focus pos	-1.429586	-1.428180813131781			
[mm] SIM defocus	0.1037507710433287	0.1051558262725154			
[mm] SIM translation stage pos	250.455976	250.466033080201			
[mm] SIM translation stage offset	0	-0.01005468664627074			
[s] Observation start time (MET)	414699061.541358	414699060.51635			
Observation start date	2011-02-21T18:11:02	2011-02-21T18:11:00			
[s] Observation end time (MET)	414707202.09178	414707201.06677			
Observation end date	2011-02-21T20:26:42	2011-02-21T20:26:41			
Read mode	TIMED	TIMED			

2.3 Star Slots

2.4 FID Slots

A Summary

A.1 Status

V&V Scientist	Jen Lauer
V&V Date (YYYY-MM-DD)	2012.02.07
V&V Edition	1
V&V Disposition and Status	OK
V&V Charge Time	6.2482787386775

A.2 Comments