

V&V Reference Report

L2 ASCDS Version : 7.6.7.1

Observation 5491 - L2 Version 002
Chandra X-Ray Center

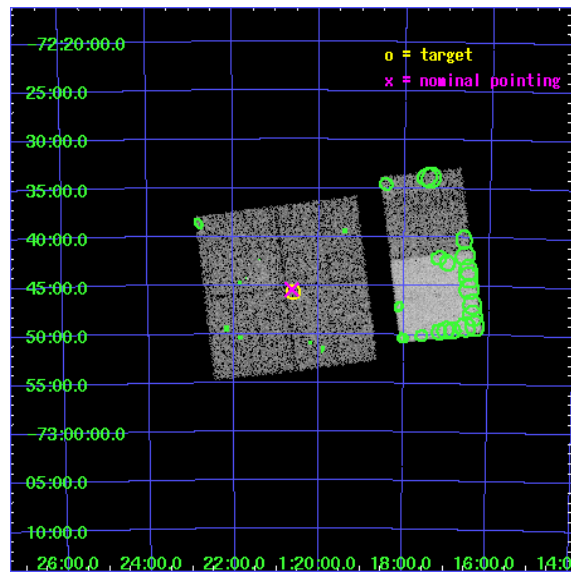
L2 Processing Date : Mar 15 2006

Contents

1	Front	2
2	OBI	3
2.1	OBI	3
2.1.1	Images	3
2.1.2	Bias	3
2.1.3	Parameters	4
2.1.4	Events	4
2.2	Compared Parameters	5
2.3	Aspect	6
2.4	Star Slots	9
2.4.1	Slot 3	9
2.4.2	Slot 4	10
2.4.3	Slot 5	11
2.4.4	Slot 6	12
2.4.5	Slot 7	13
2.5	FID Slots	14
2.5.1	Slot 0	14
2.5.2	Slot 1	15
2.5.3	Slot 2	16
3	Point Sources	17
A	Summary	18
A.1	Status	18
A.2	Comments	18

1 Front

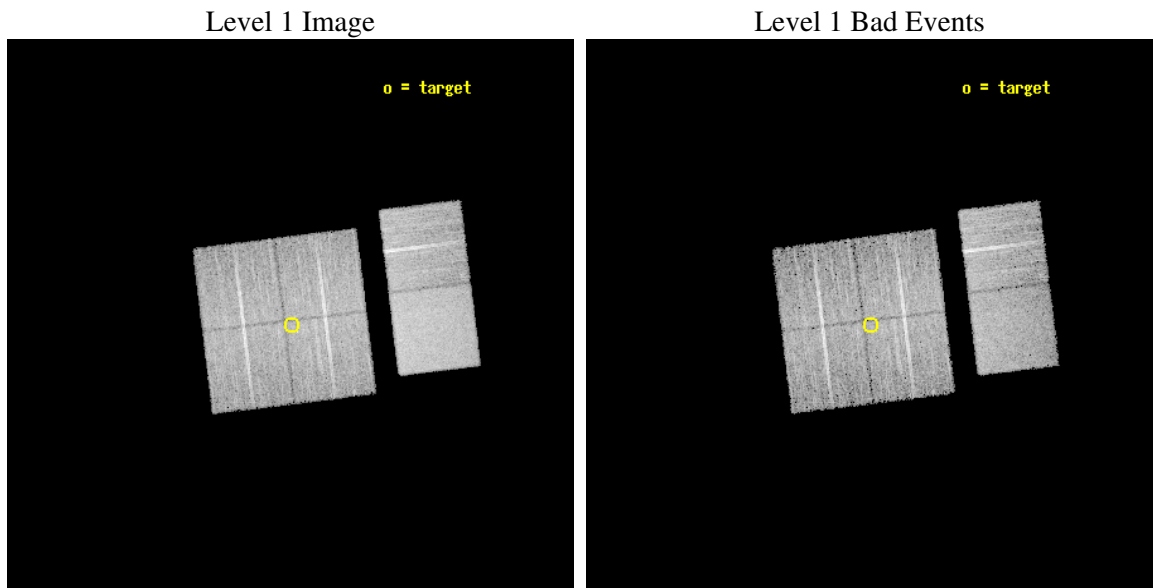
seq_num	400421
obs_id	5491
title	Discovering X-ray pulsars in the Wing of the Small Magellanic Cloud
observer	Dr. Malcolm Coe
object	SMCwing 12
dtcycle	0
cycle	P
ra_targ	20.15
dec_targ	-72.761111
ra_nom	20.157736174817
dec_nom	-72.757144924551
roll_nom	83.019316786578
revision	2
ontime	9171.1999658346
livetime	9055.0687096336
ontime0	9171.1999658346
ontime1	9167.9590851665
ontime2	9171.1999658346
ontime3	9171.1999658346
ontime6	9171.1999658346
ontime7	9171.1999658346
l2events	73925



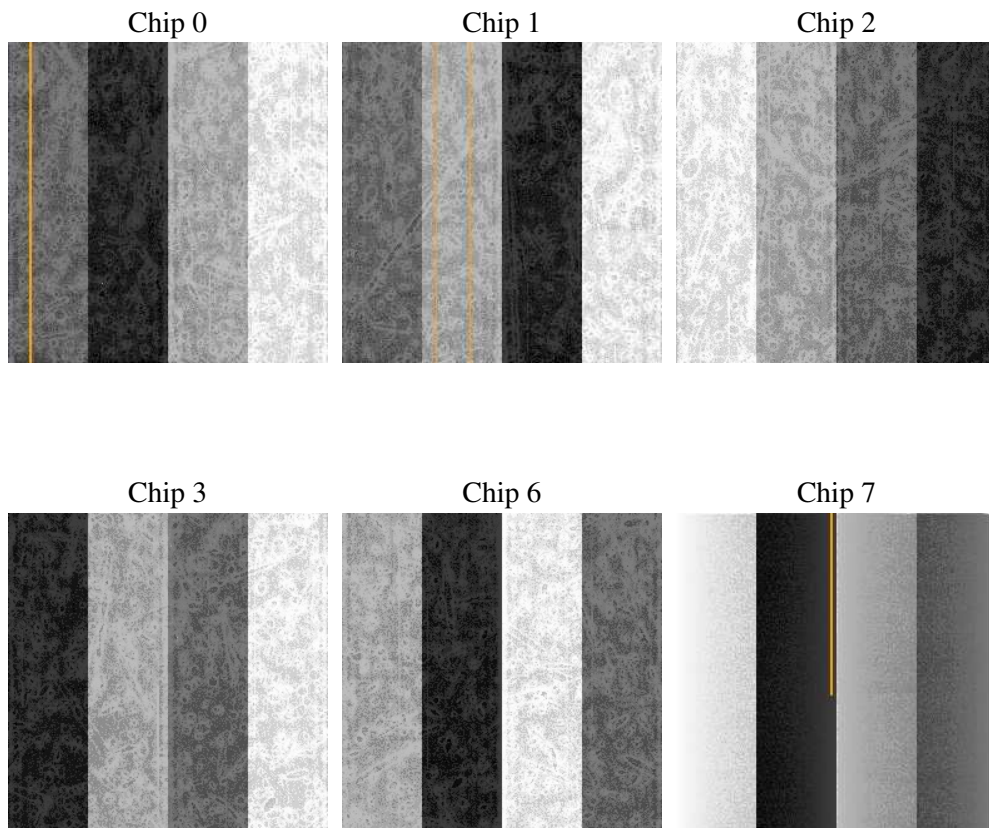
2 OBI

2.1 OBI

2.1.1 Images



2.1.2 Bias



2.1.3 Parameters

obi_num	0
ascdsver	7.6.7.1
caldbver	3.2.1
date	2006-03-15T17:50:42
revision	2

sched_exp_time	9000.000000
ontime	9389.1911800802
ontime0	9389.1911800802
ontime1	9385.9503293335
ontime2	9389.1911800802
ontime3	9389.1911800802
ontime6	9389.1911800802
ontime7	9389.1912100017
l1events	446945

2.1.4 Events

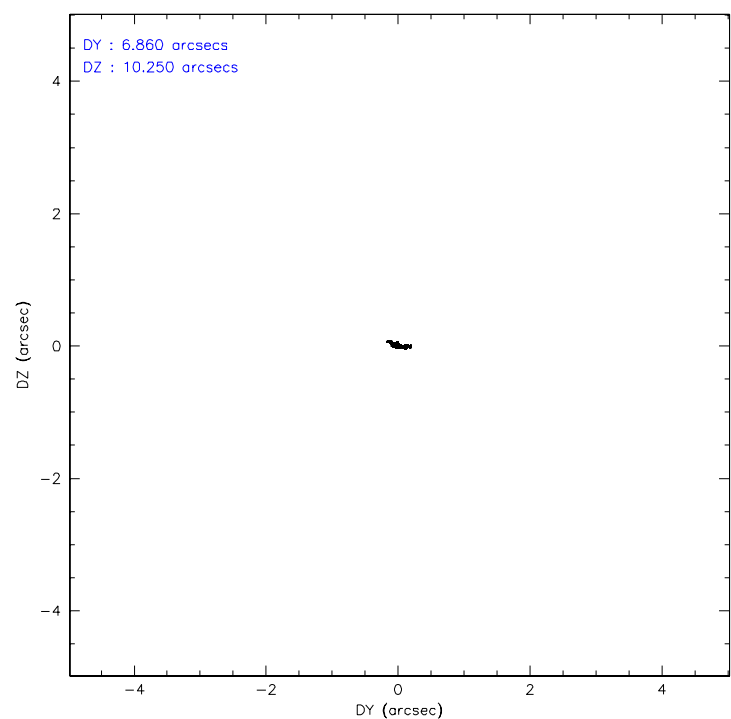
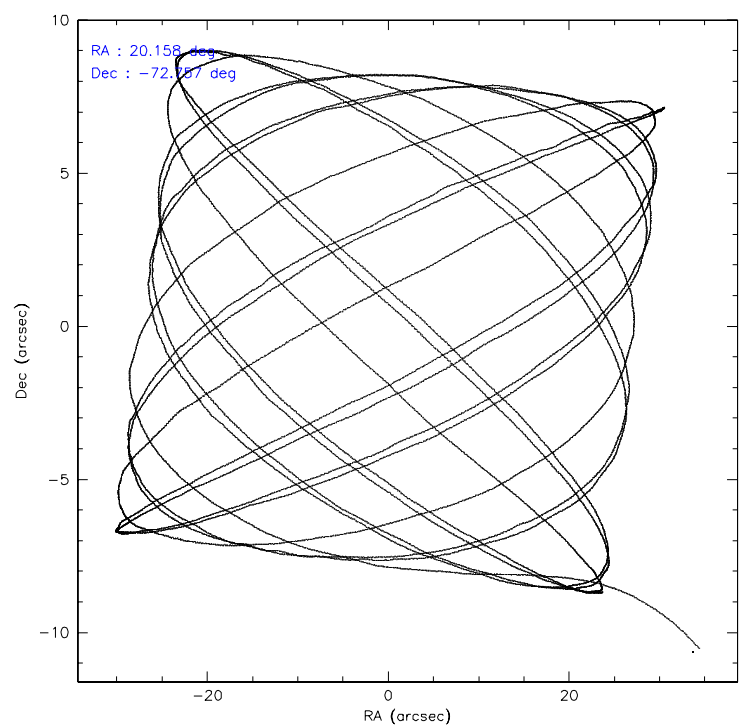
	ccd 0	ccd 1	ccd 2	ccd 3	ccd 6	ccd 7
level 1 events	64766	64734	71146	70099	76444	99756
rejected events	55719	56048	62792	61667	67812	62441
rejected %	86%	86%	88%	87%	88%	62%

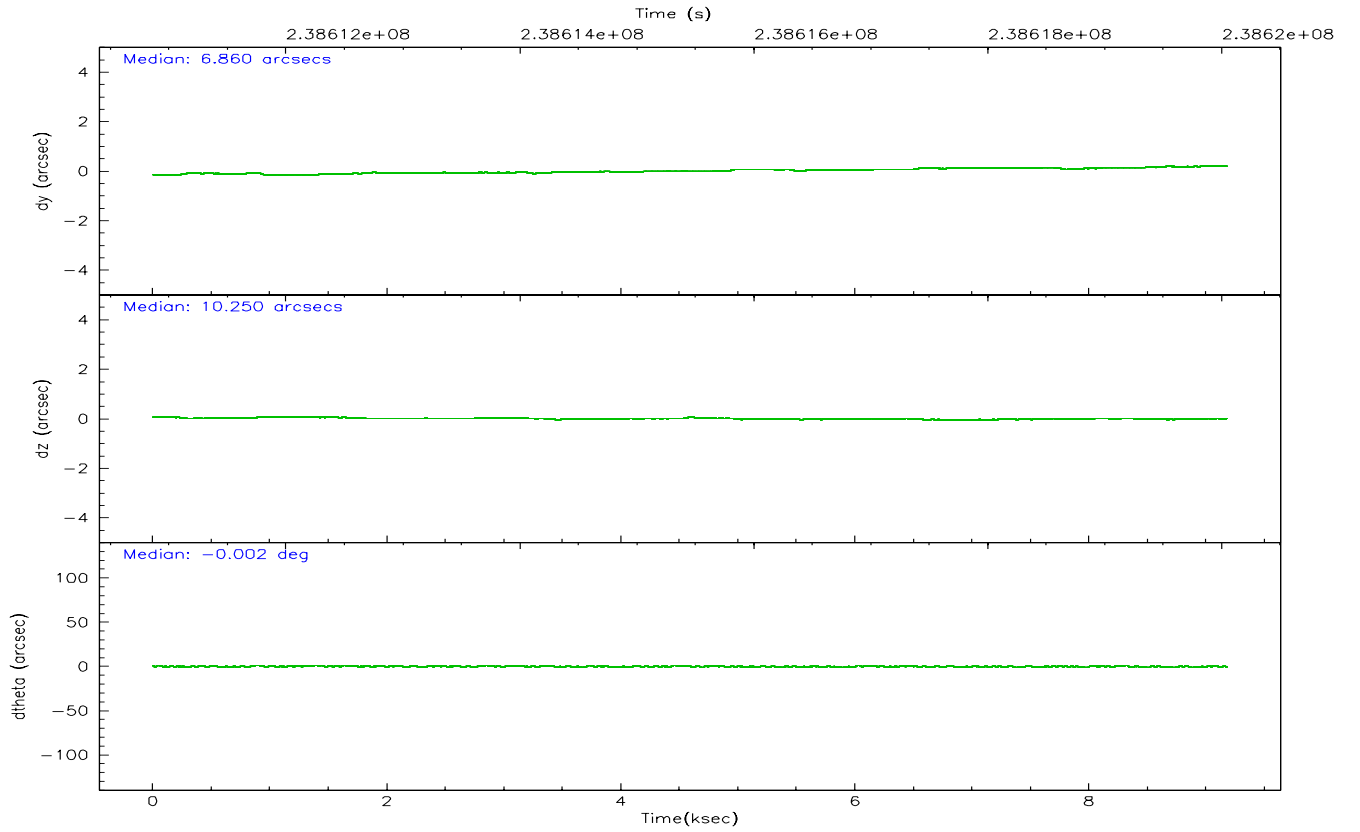
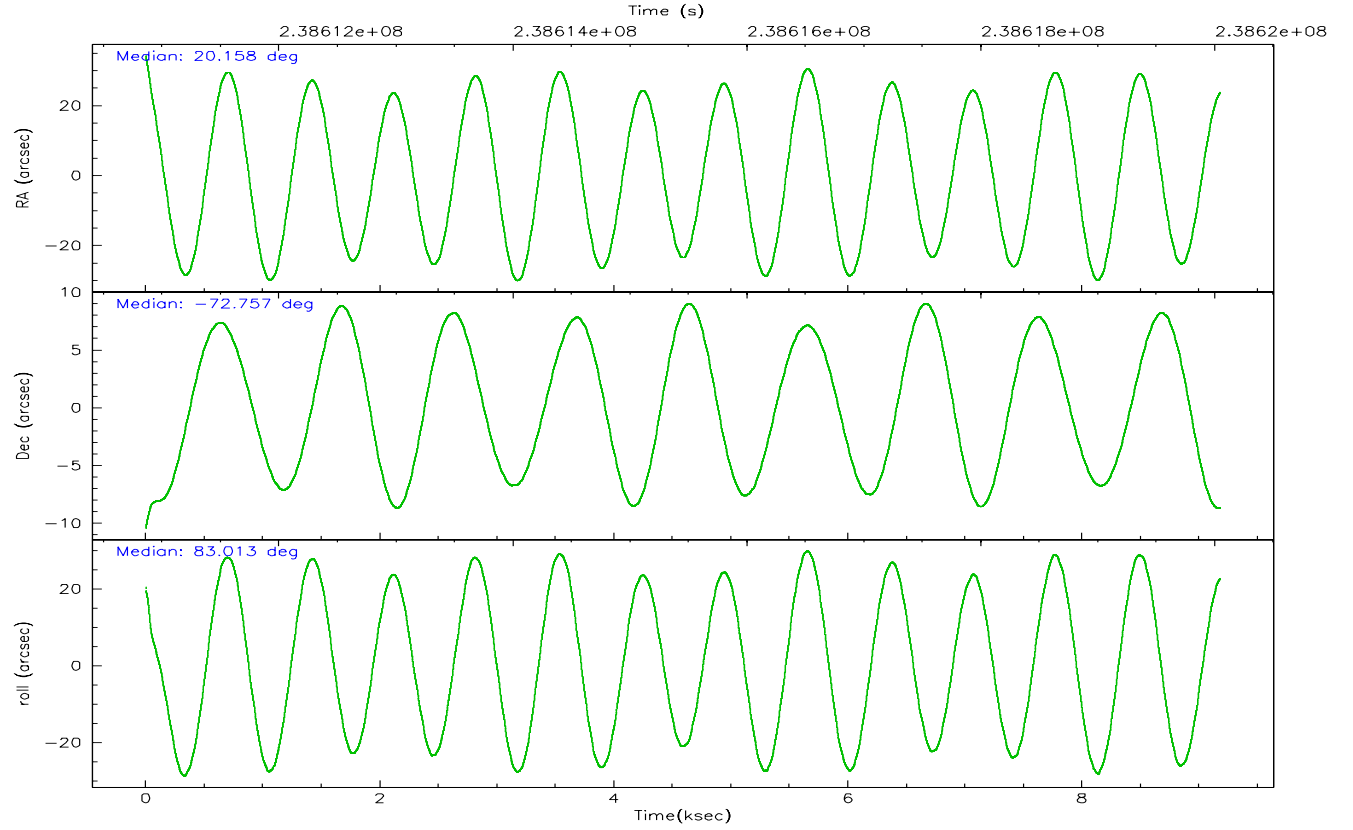
	ccd 0	ccd 1	ccd 2	ccd 3	ccd 6	ccd 7
grade 0 events	4004	3610	3825	3846	3338	2094
	6%	5%	5%	5%	4%	2%
grade 1 events	46	37	31	49	41	60
	0%	0%	0%	0%	0%	0%
grade 2 events	1941	1979	1724	1677	1939	9351
	2%	3%	2%	2%	2%	9%
grade 3 events	869	827	799	808	907	1840
	1%	1%	1%	1%	1%	1%
grade 4 events	879	808	780	816	838	1830
	1%	1%	1%	1%	1%	1%
grade 5 events	2988	3144	2847	3223	3456	6404
	4%	4%	4%	4%	4%	6%
grade 6 events	1566	1705	1372	1483	1808	23052
	2%	2%	1%	2%	2%	23%
grade 7 events	52473	52624	59768	58197	64117	55125
	81%	81%	84%	83%	83%	55%

2.2 Compared Parameters

Parameter	Planned	Actual	Parameter	Planned	Actual
Instrument	ACIS	ACIS	Obspar format version number	6	6
Detector	ACIS-012367	ACIS-012367	Obspar file type	PREDICTED	ACTUAL
Grating	NONE	NONE	Obspar update status	NONE	UPDATED
Data mode	FAINT	FAINT	On-chip summing requested	N	N
Observation mode	POINTING	POINTING	Subarray requested	NONE	NONE
Pointing RA	20.194323	20.15773617481745	Alternating exposures requested	N	N
Pointing Dec	-72.782245	-72.75714492455108	Primary exposure time	0.000000	3.2
Pointing Roll	82.845572	83.01931678657846			
SIM focus pos (mm)	-0.782348	-0.7809083437167272			
SIM defocus (mm)	0	0.001439871863259334			
SIM translation stage pos (mm)	-233.592463	-233.5874344608287			
SIM translation stage offset (mm)	0	-0.005018542100998502			
Observation start time	238611048.184000	238609875.69062			
Observation start date	2005-07-24T16:49:44	2005-07-24T16:31:15			
Observation end time	238620048.184000	238620625.37861			
Observation end date	2005-07-24T19:19:44	2005-07-24T19:30:25			
Read mode	TIMED	TIMED			

2.3 Aspect



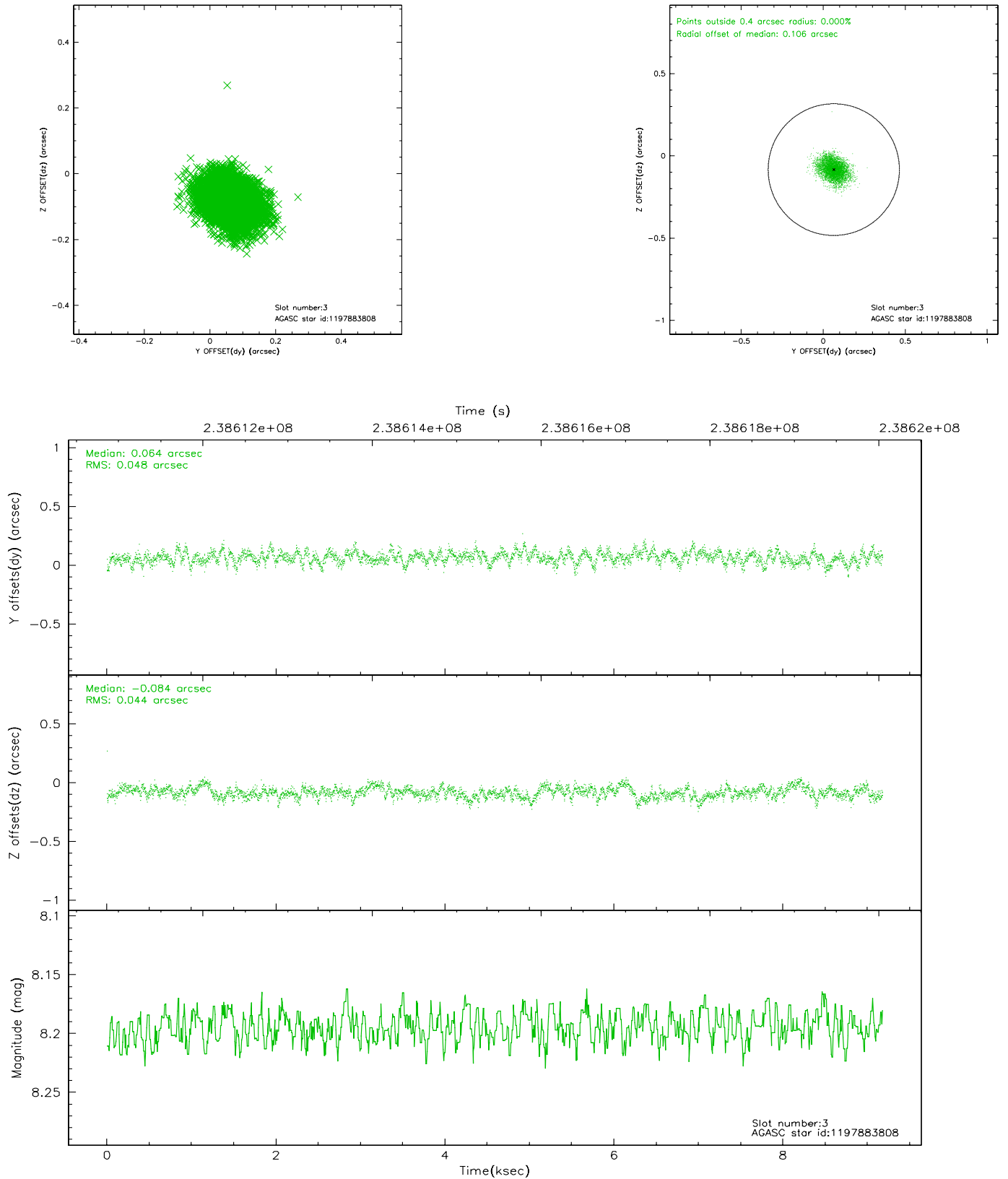


Slot Statistics

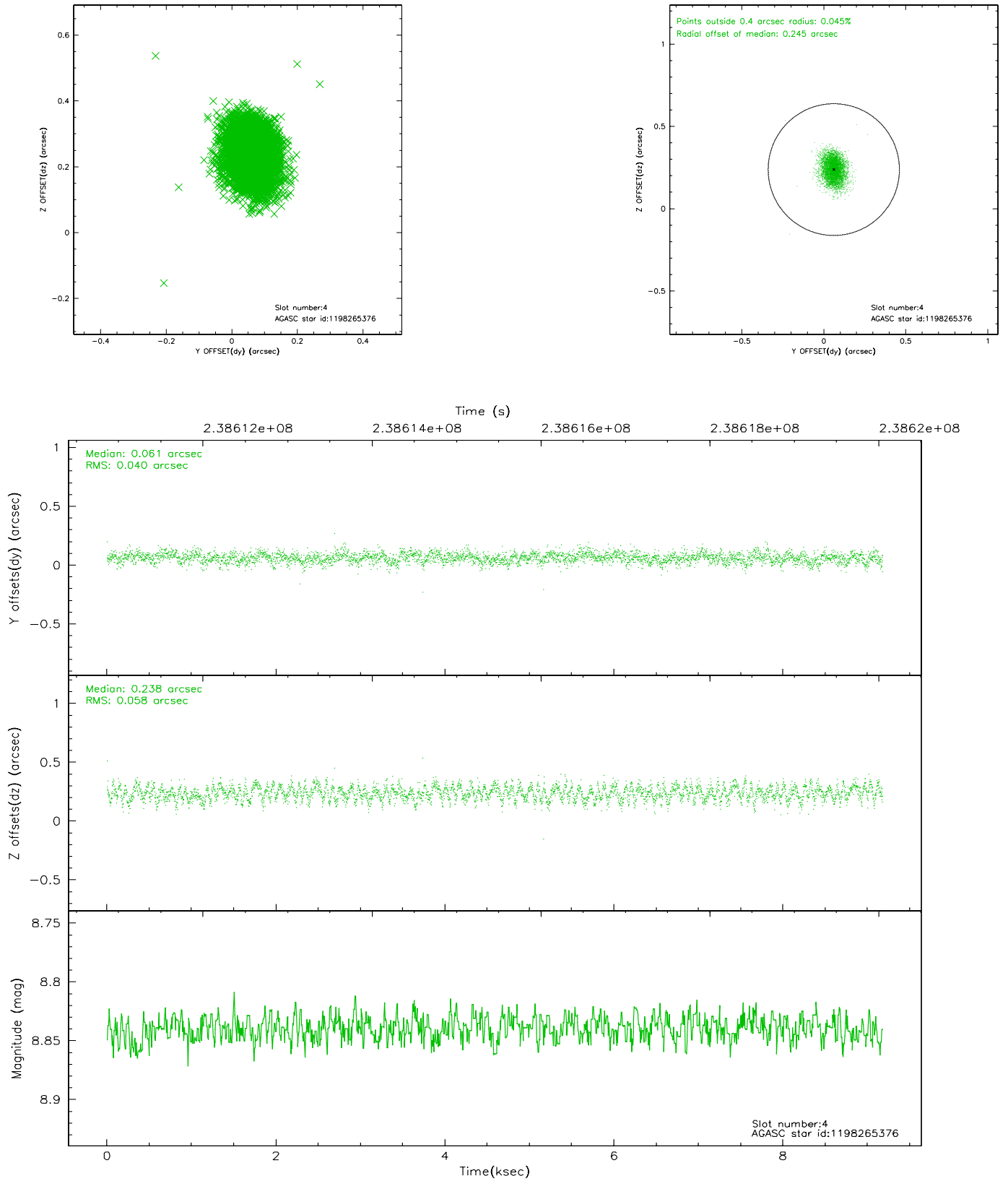
slot	status	id	mag	n_pts	med_dy	med_dz	dr1	dr2	ra	dec	mean_y	mean_z
0	FID	ACIS-I-1	7.25	2239	-0.002	0.021	0.007	0.019	0.000000	0.000000	932.80	-833.72
1	FID	ACIS-I-5	7.23	2239	-0.139	0.025	0.007	0.016	0.000000	0.000000	-1815.10	1063.49
2	FID	ACIS-I-6	7.25	2239	0.050	0.024	0.008	0.015	0.000000	0.000000	397.77	1708.65
3	GUIDE	1197883808	8.20	4479	0.064	-0.084	0.069	0.112	21.001789	-72.324407	1739.89	-670.72
4	GUIDE	1198265376	8.84	4478	0.061	0.238	0.074	0.119	21.649225	-72.748973	294.70	-1528.44
5	GUIDE	1198268712	8.52	4478	-0.092	0.017	0.079	0.123	21.961983	-73.269598	-1538.93	-2039.66
6	GUIDE	1198269920	8.26	4478	-0.051	0.013	0.064	0.109	20.316466	-73.033728	-882.43	-240.44
7	GUIDE	1198282880	9.60	4470	0.019	-0.184	0.130	0.210	17.772623	-73.017886	-1209.85	2413.40

2.4 Star Slots

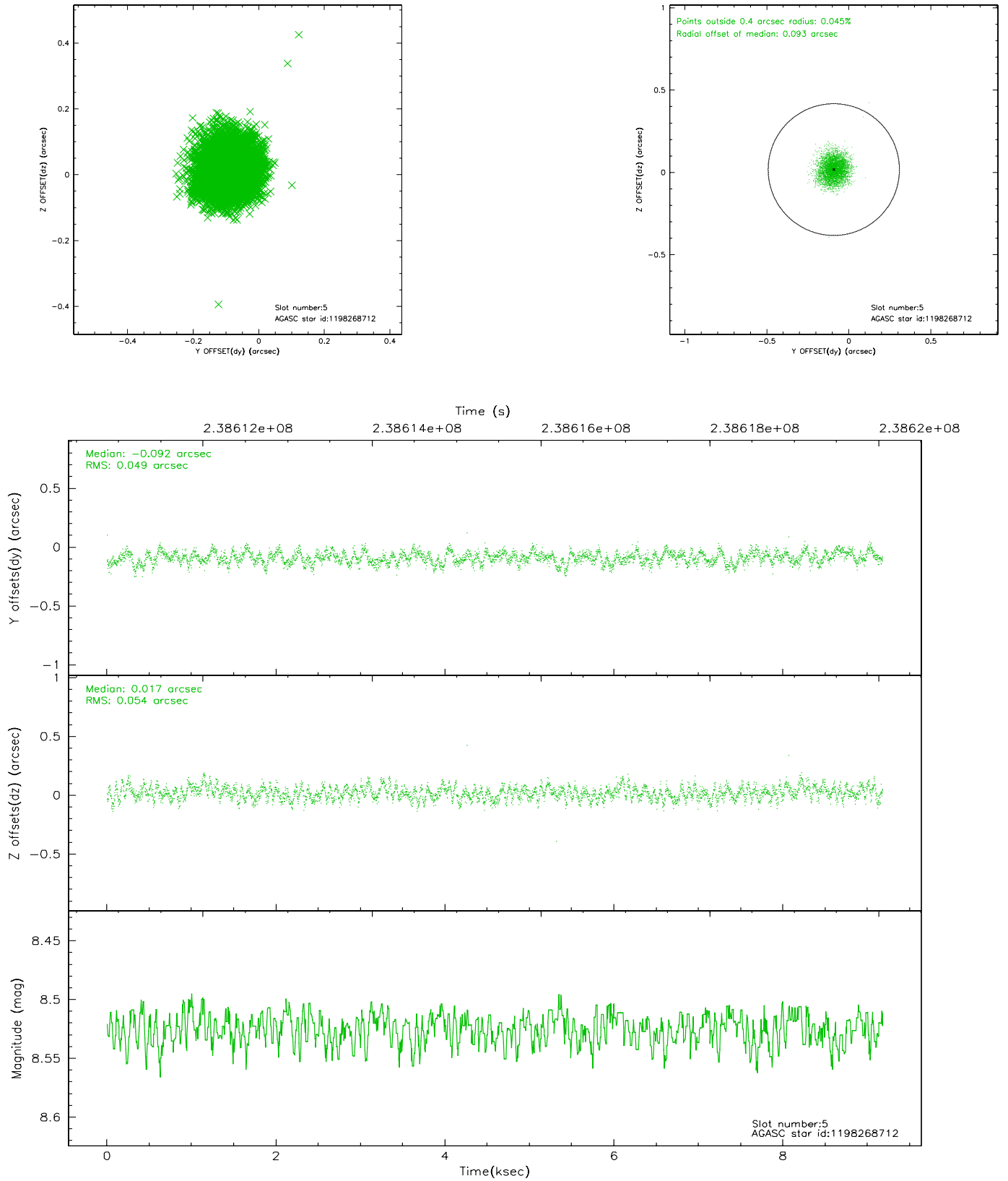
2.4.1 Slot 3



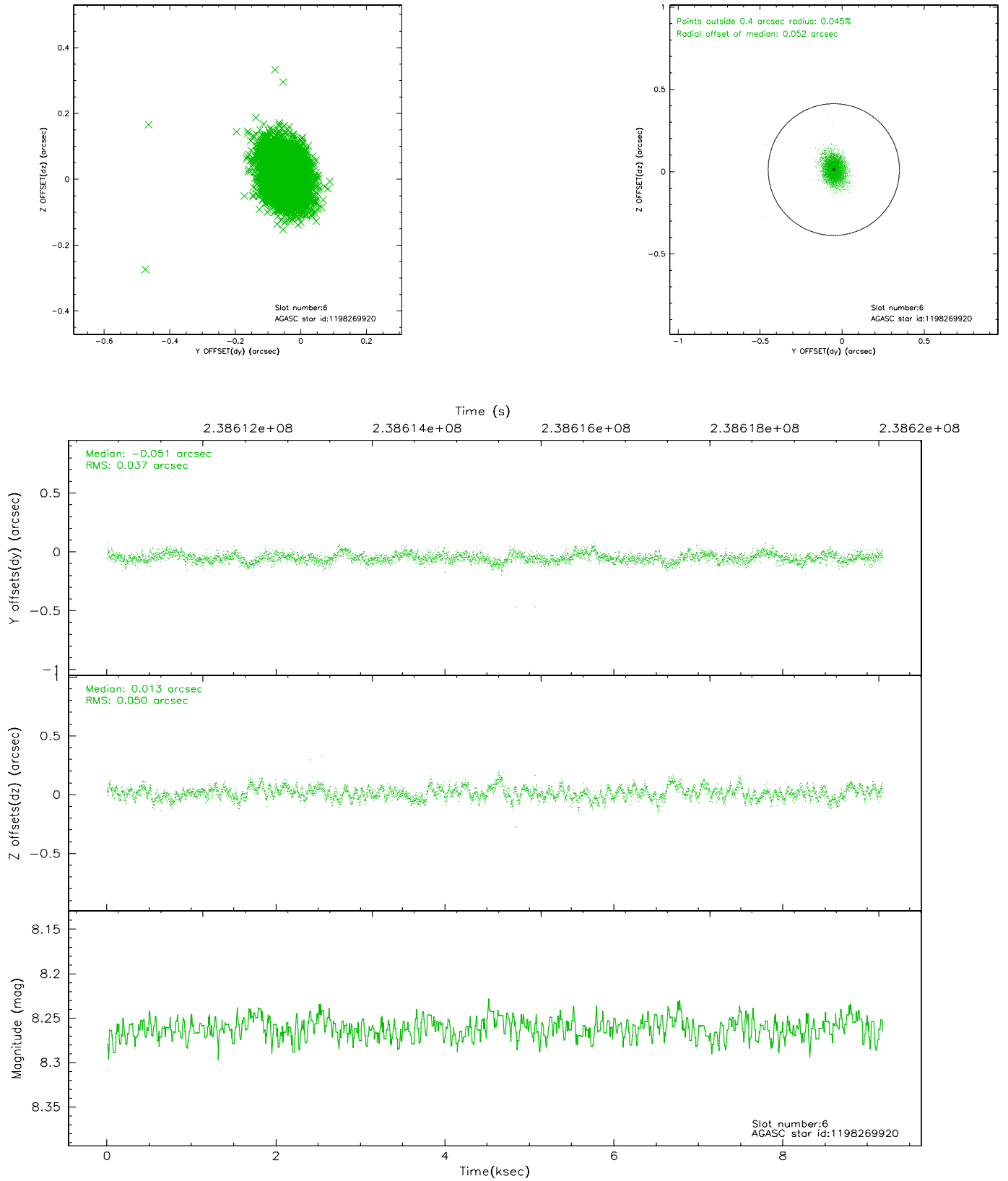
2.4.2 Slot 4



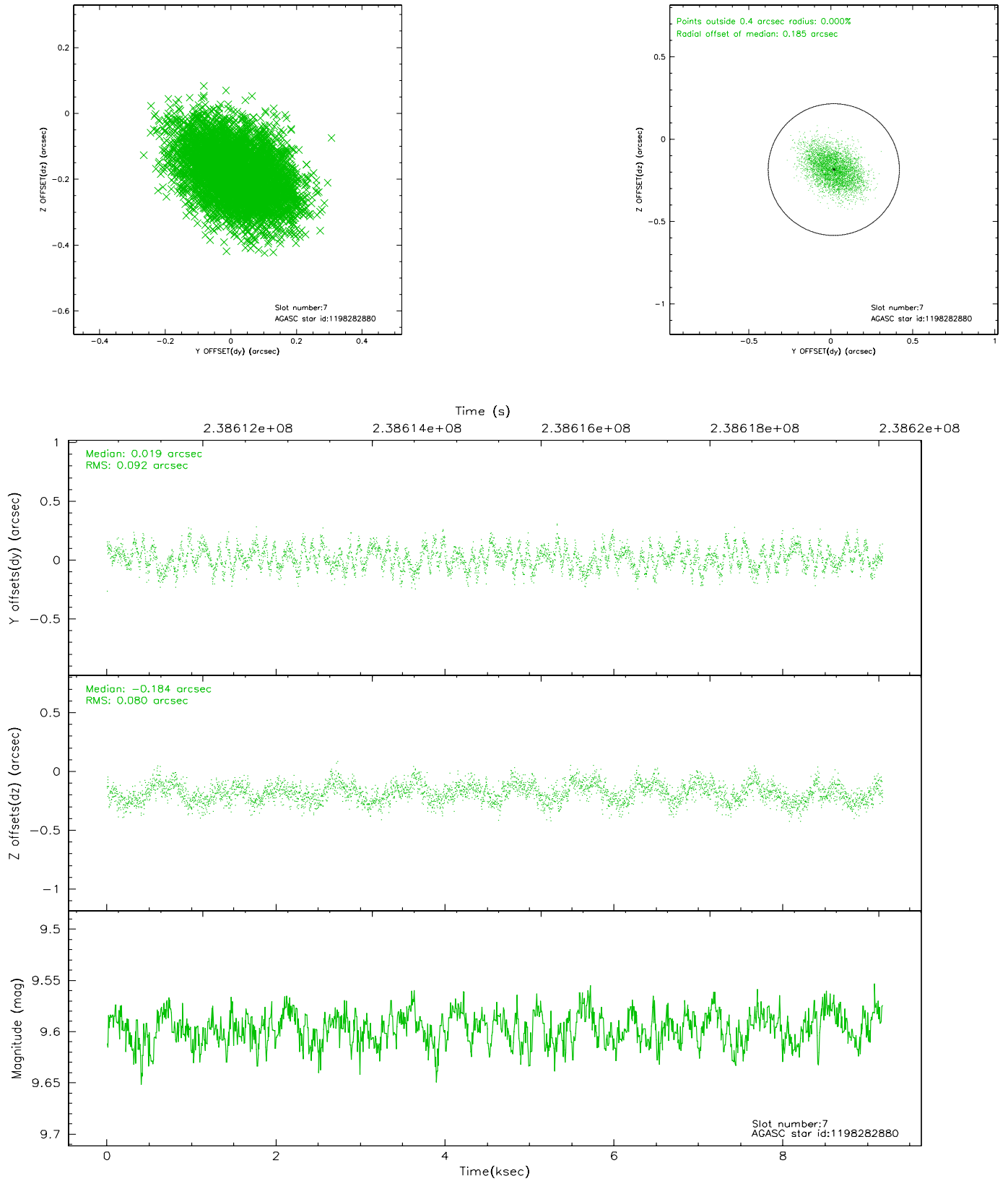
2.4.3 Slot 5



2.4.4 Slot 6

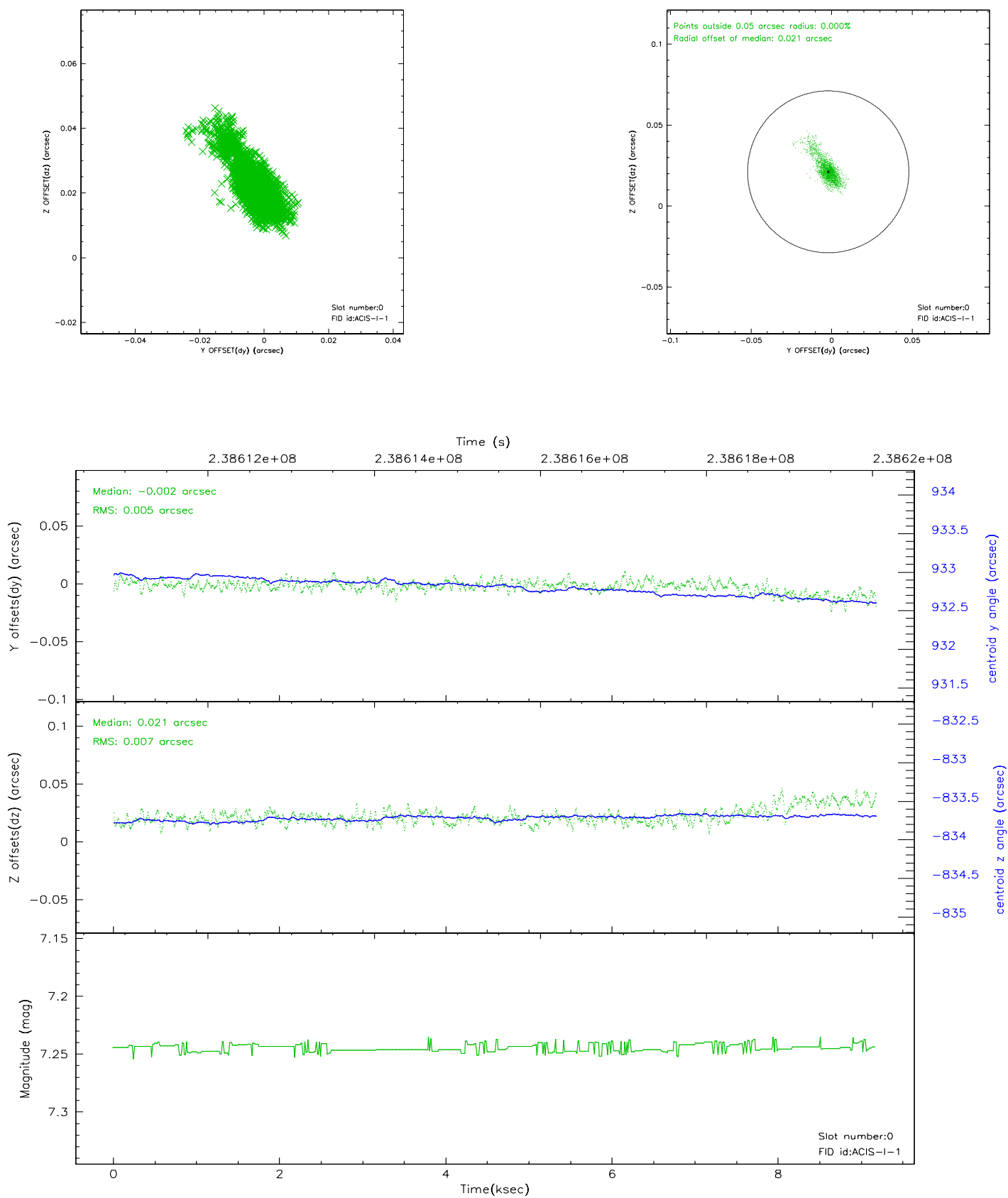


2.4.5 Slot 7

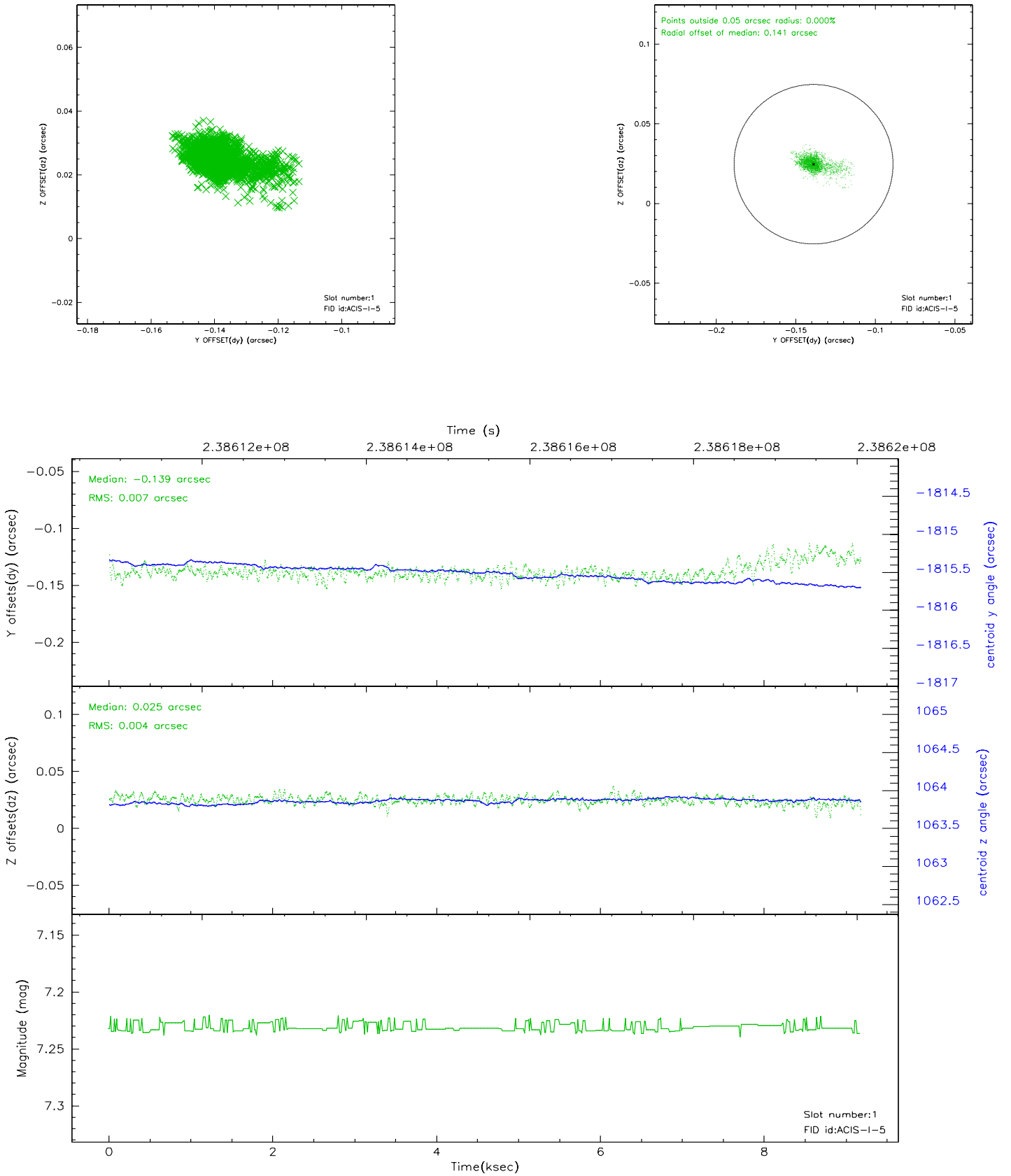


2.5 FID Slots

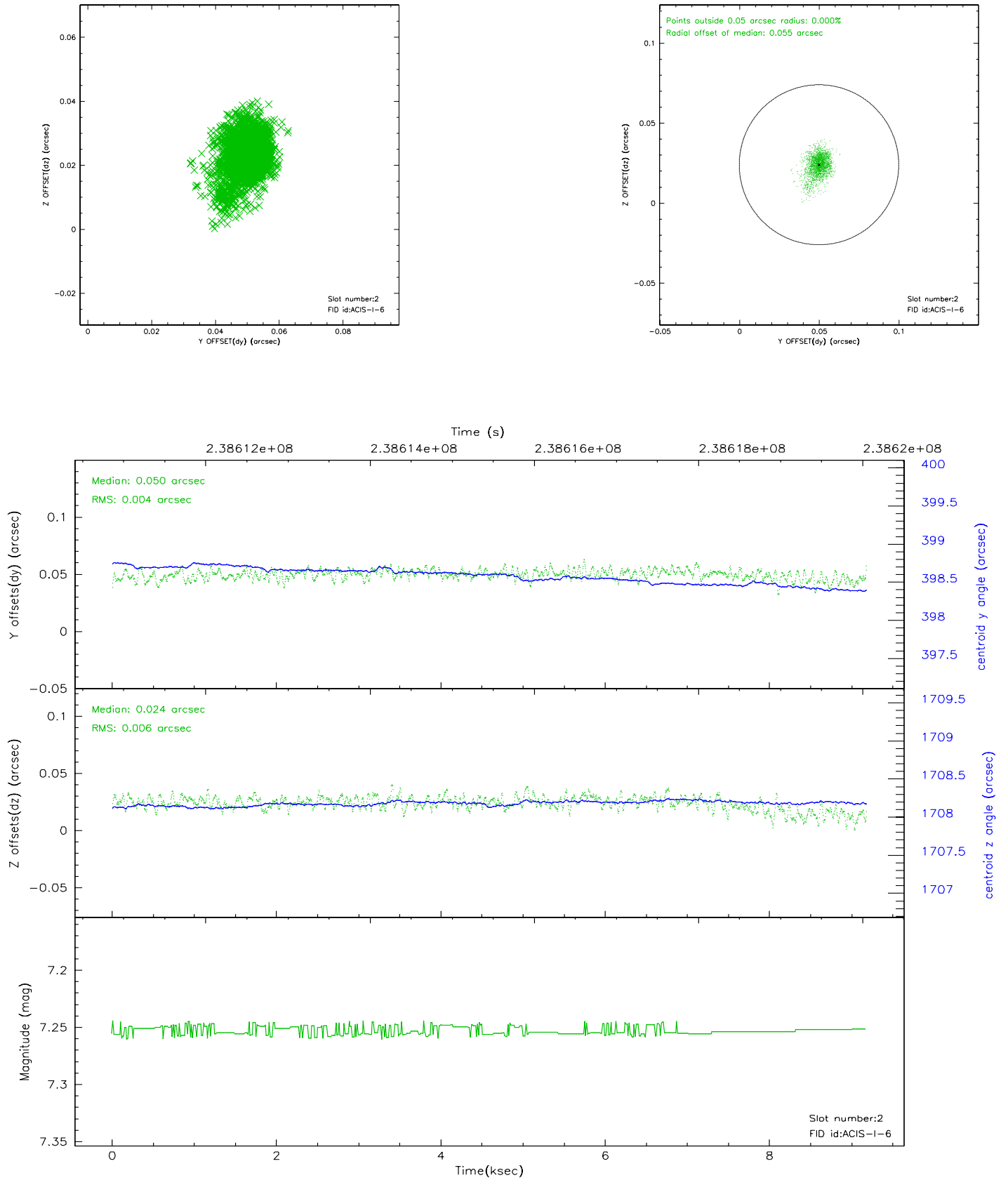
2.5.1 Slot 0



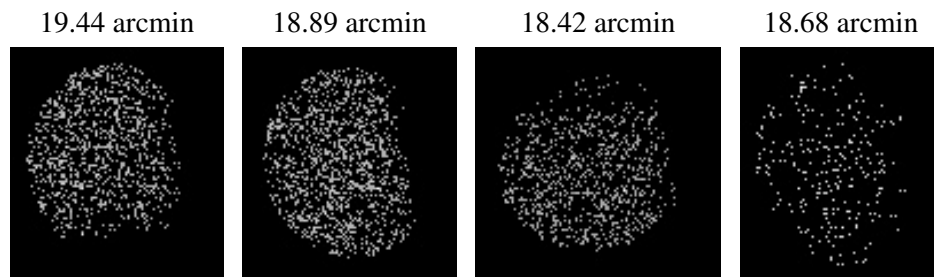
2.5.2 Slot 1



2.5.3 Slot 2



3 Point Sources



A Summary

A.1 Status

V&V Scientist	Beth Sundheim
V&V Date (YYYY-MM-DD)	2006.03.15
V&V Edition	1
V&V Disposition and Status	OK
V&V Charge Time	9.389191

A.2 Comments