

V&V Reference Report

L2 ASCDS Version : 8.4.3

Observation 5481 - L2 Version 2
Chandra X-Ray Center

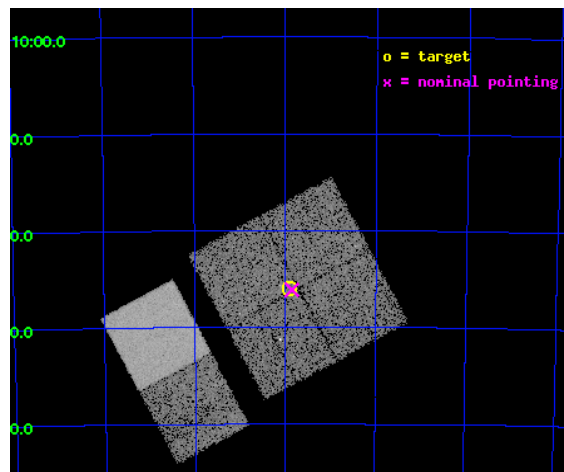
L2 Processing Date : Mar 24 2012

Contents

1	Front	2
2	OBI	3
2.1	OBI	3
2.1.1	Images	3
2.1.2	Bias	3
2.1.3	Parameters	4
2.1.4	Events	4
2.2	Compared Parameters	5
2.3	Aspect	6
2.4	Star Slots	9
2.4.1	Slot 3	9
2.4.2	Slot 4	10
2.4.3	Slot 5	11
2.4.4	Slot 6	12
2.4.5	Slot 7	13
2.5	FID Slots	14
2.5.1	Slot 0	14
2.5.2	Slot 1	15
2.5.3	Slot 2	16
A	Summary	17
A.1	Status	17
A.2	Comments	17

1 Front

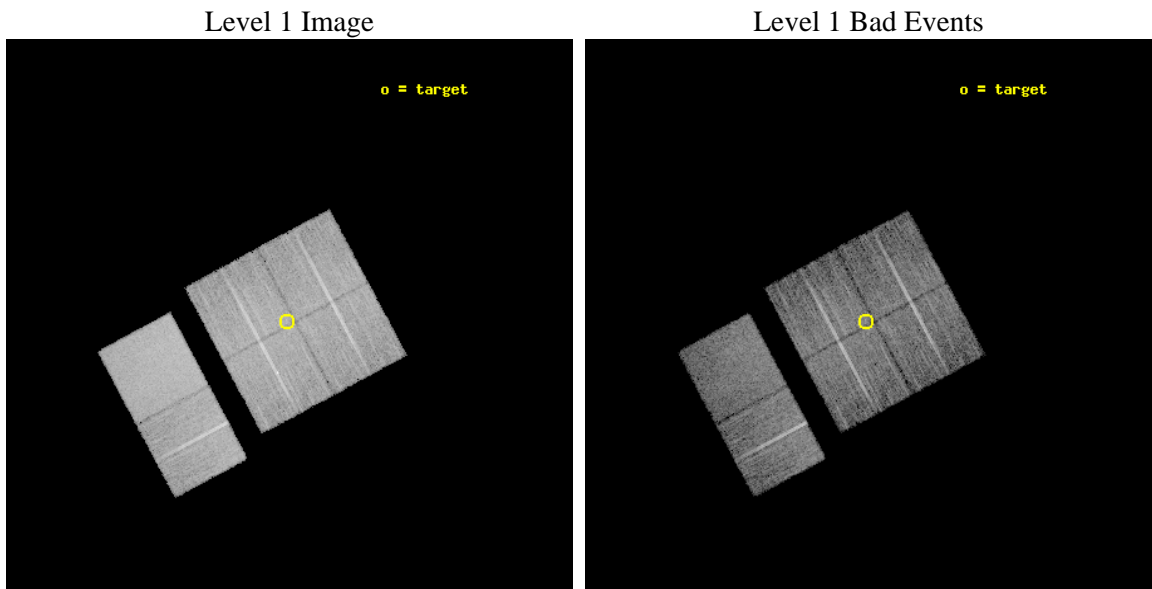
seq_num	400411	Sequence number
obs_id	5481	Observation id
title	Discovering X-ray pulsars in the Wing of the Small Magellanic Cloud	
observer	Prof Malcolm Coe	Principal investigator
object	SMCwing 2	Source name
dtcycle	0	
cycle	P	events from which exps? Prim/Second/Both
ra_targ	15.475	Observer's specified target RA [deg]
dec_targ	-71.599444	Observer's specified target Dec [deg]
ra_nom	15.463511517303	Nominal RA [deg]
dec_nom	-71.602382660093	Nominal Dec [deg]
roll_nom	241.84186927394	Nominal Roll [deg]
revision	2	Processing version of data
ontime	9455.9999647737	Sum of GTIs [s]
livetime	9336.2623995001	Livetime [s]
ontime0	9455.9999647737	Sum of GTIs [s]
ontime1	9455.9999647737	Sum of GTIs [s]
ontime2	9455.9999647737	Sum of GTIs [s]
ontime3	9455.9999647737	Sum of GTIs [s]
ontime6	9455.9999647737	Sum of GTIs [s]
ontime7	9455.9999647737	Sum of GTIs [s]
l2events	85003	Number of level 2 events



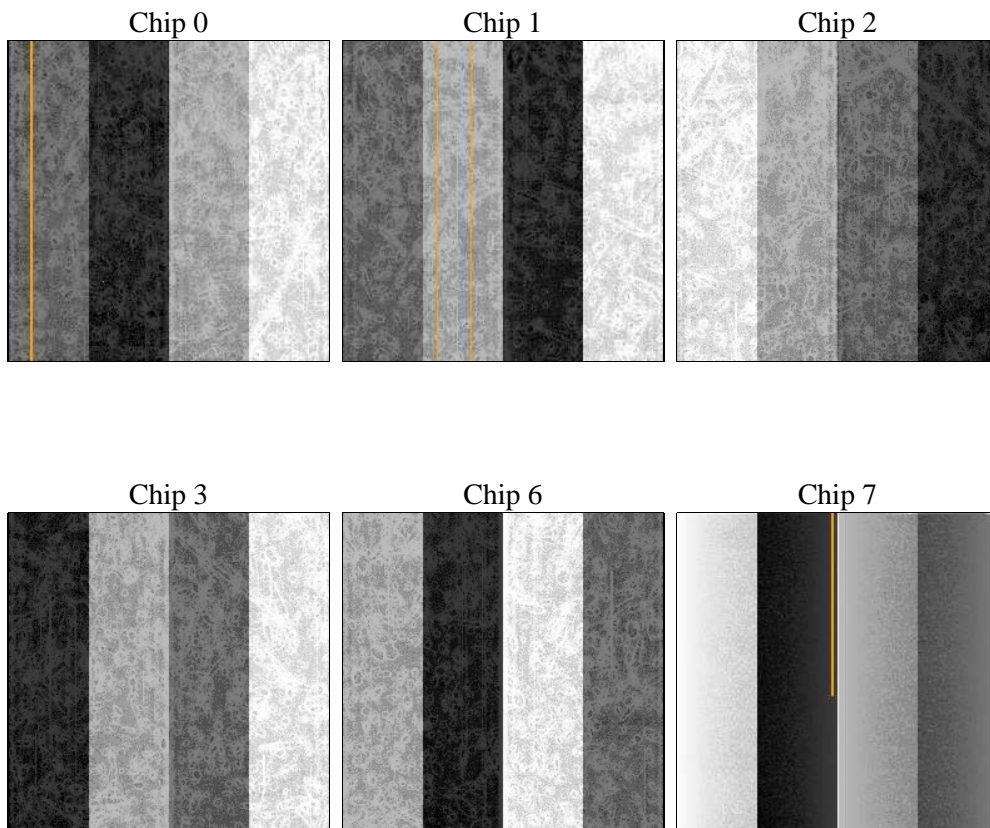
2 OBI

2.1 OBI

2.1.1 Images



2.1.2 Bias



2.1.3 Parameters

obi_num	0	Obi number	sched_exp_time	9700.000000	[s] Scheduled observation exposure time
ascdsver	8.4.3	Processing system revision	ontime	9455.9999647737	Sum of GTIs [s]
caldsver	4.4.8	 	ontime0	9455.9999647737	Sum of GTIs [s]
date	2012-03-25T00:13:44	Date and time of file creation	ontime1	9455.9999647737	Sum of GTIs [s]
revision	2	Processing version of data	ontime2	9455.9999647737	Sum of GTIs [s]
			ontime3	9455.9999647737	Sum of GTIs [s]
			ontime6	9455.9999647737	Sum of GTIs [s]
			ontime7	9455.9999647737	Sum of GTIs [s]
			l1events	495932	Number of level 1 events

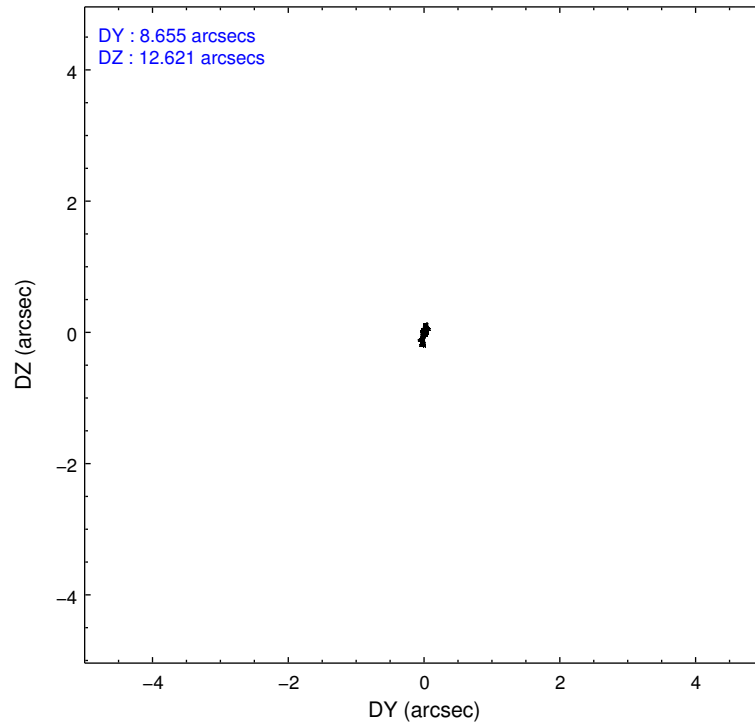
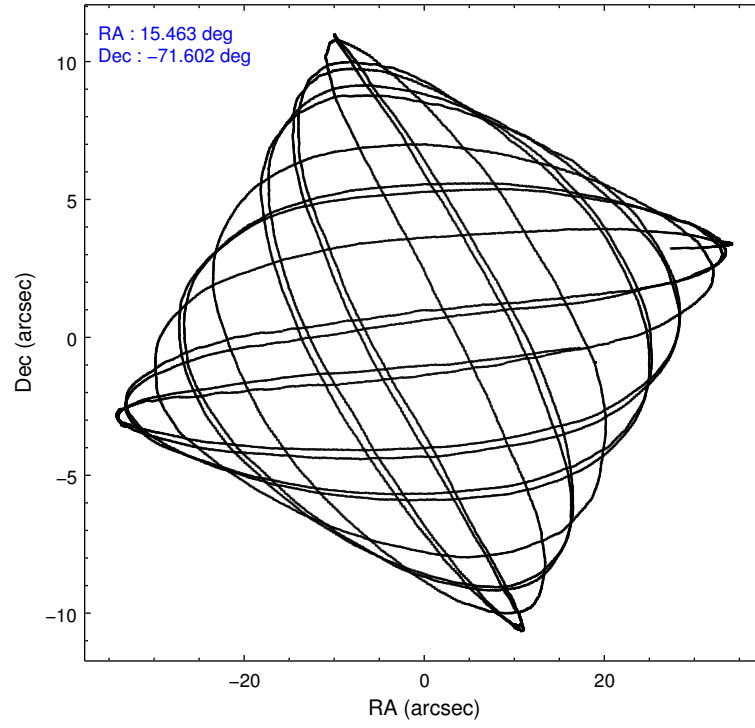
2.1.4 Events

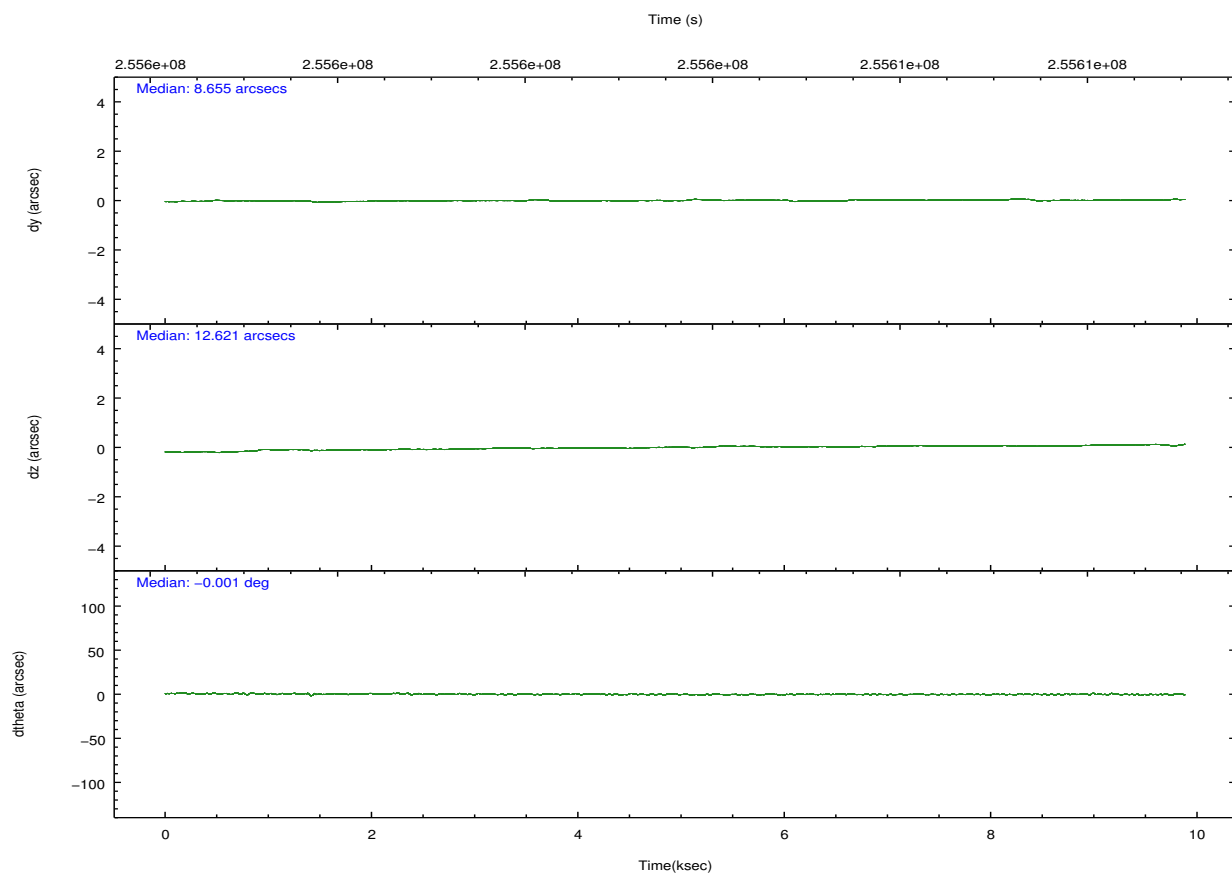
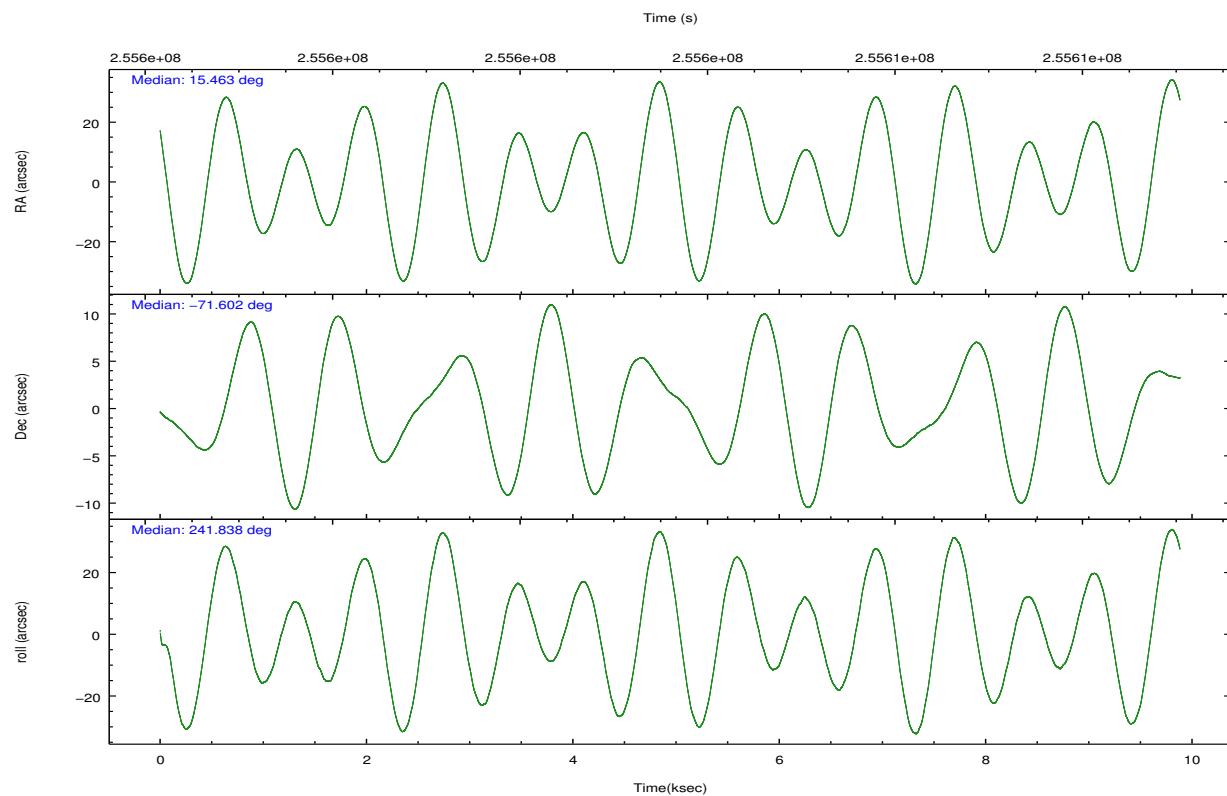
	ccd 0	ccd 1	ccd 2	ccd 3	ccd 6	ccd 7		ccd 0	ccd 1	ccd 2	ccd 3	ccd 6	ccd 7
level 1 events	73541	73274	79734	78765	81399	109219	grade 0 events	3991	3954	4361	4075	3657	3950
rejected events	64194	63114	70059	69442	72095	64247		5%	5%	5%	5%	4%	3%
rejected %	87%	86%	87%	88%	88%	58%	grade 1 events	43	53	56	48	35	124
								0%	0%	0%	0%	0%	0%
							grade 2 events	2076	2200	1937	1841	1973	9069
								2%	3%	2%	2%	2%	8%
							grade 3 events	899	1081	907	880	873	3957
								1%	1%	1%	1%	1%	3%
							grade 4 events	844	920	946	907	925	3919
								1%	1%	1%	1%	1%	3%
							grade 5 events	3105	3371	3080	3535	3799	10361
								4%	4%	3%	4%	4%	9%
							grade 6 events	1540	2009	1528	1621	1877	24093
								2%	2%	1%	2%	2%	22%
							grade 7 events	61043	59686	66919	65858	68260	53746
								83%	81%	83%	83%	83%	49%

2.2 Compared Parameters

Parameter	Planned	Actual	Parameter	Planned	Actual
Instrument	ACIS	ACIS	Obspar format version number	7	7
Detector	ACIS-012367	ACIS-012367	Obspar file type	PREDICTED	ACTUAL
Grating	NONE	NONE	Obspar update status	NONE	UPDATED
Data mode	FAINT	FAINT	Number of optional ACIS chips dropped	0	0
Observation mode	POINTING	POINTING	On-chip summing requested	N	N
[deg] Pointing RA	15.460430	15.46351151730312	Subarray requested	NONE	NONE
[deg] Pointing Dec	-71.574991	-71.60238266009335	Alternating exposures requested	N	N
[deg] Pointing Roll	241.630262	241.8418692739417	[s] Primary exposure time	0.000000	3.2
[mm] SIM focus pos	-0.782348	-0.7809083437167272			
[mm] SIM defocus	0	0.001439871863259334			
[mm] SIM translation stage pos	-233.592463	-233.5874344608287			
[mm] SIM translation stage offset	0	-0.005018542100998502			
[s] Observation start time (MET)	255598838.184000	255598462.7364			
Observation start date	2006-02-06T07:39:33	2006-02-06T07:34:22			
[s] Observation end time (MET)	255608538.184000	255608672.76188			
Observation end date	2006-02-06T10:21:13	2006-02-06T10:24:32			
Read mode	TIMED	TIMED			

2.3 Aspect



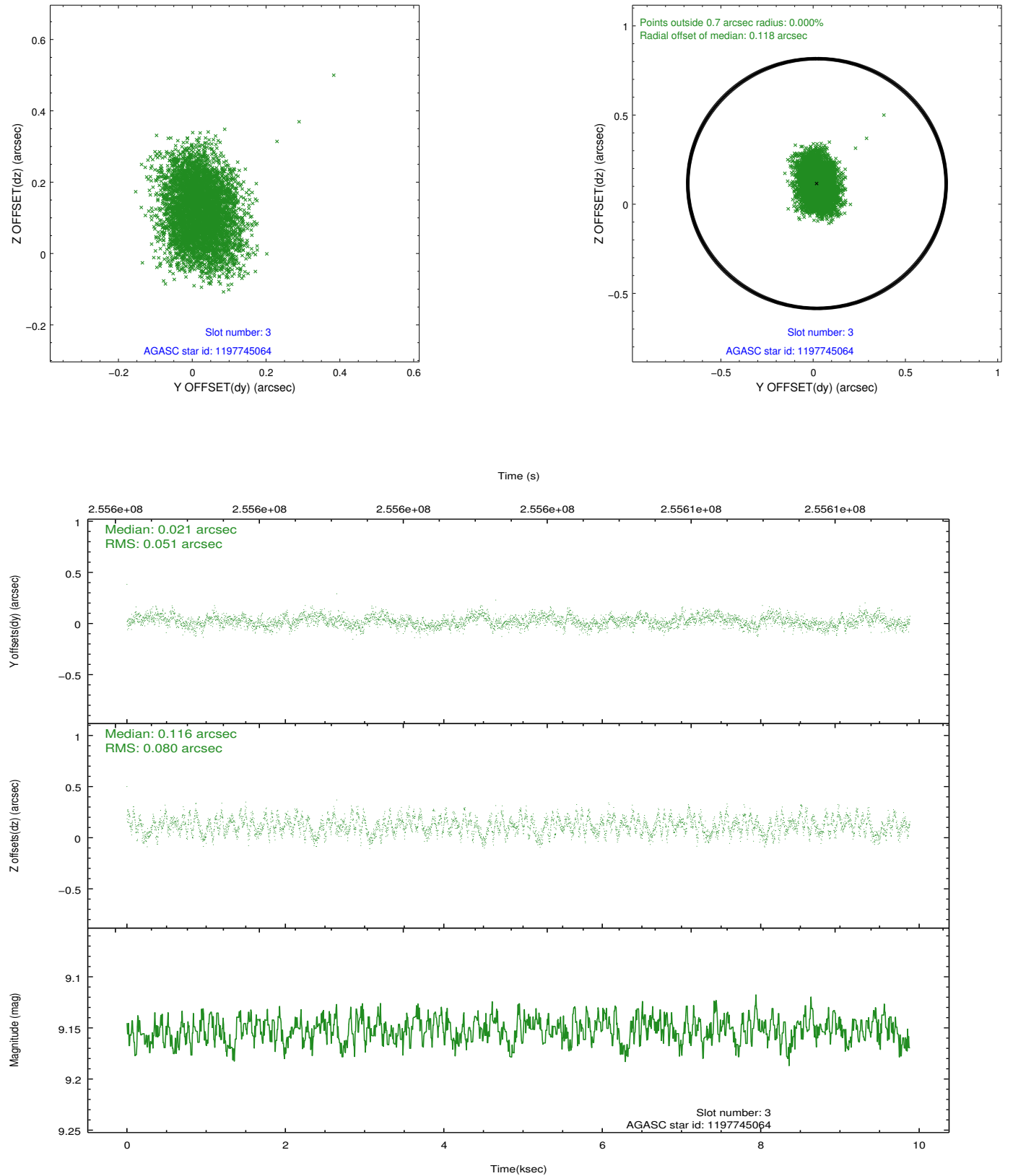


Slot Statistics

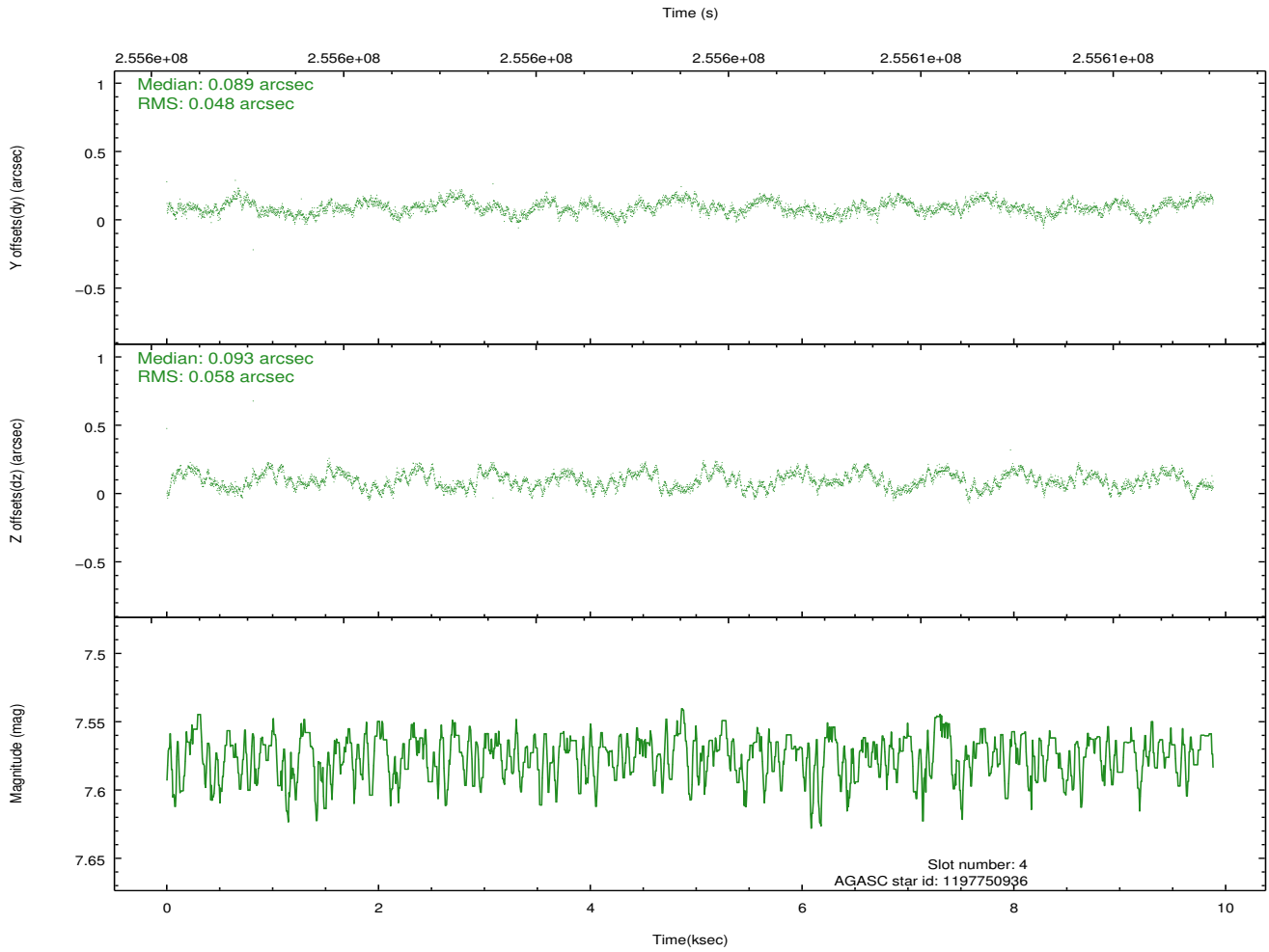
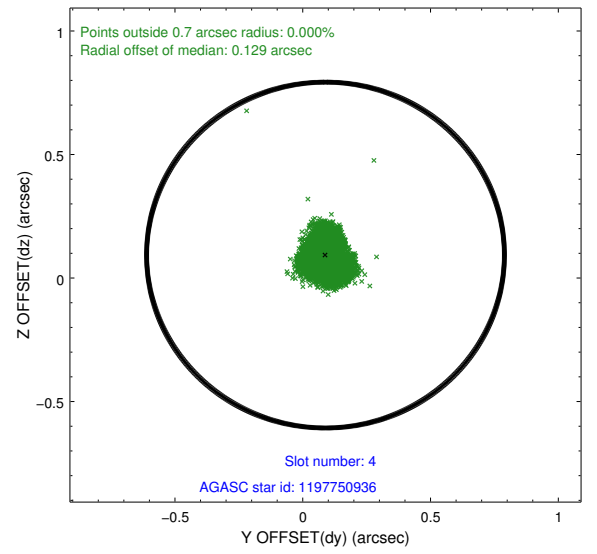
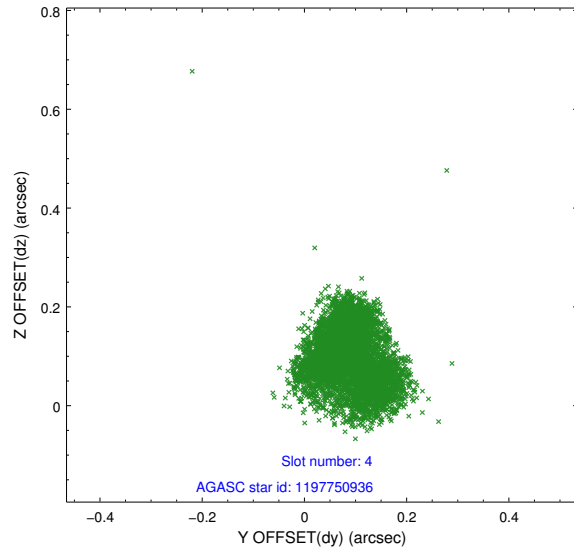
slot	status	id	mag	n_pts	med_dy	med_dz	dr1	dr2	ra	dec	mean_y	mean_z
0	FID	ACIS-I-1	7.24	2411	0.052	0.007	0.007	0.014	0.000000	0.000000	931.01	-836.16
1	FID	ACIS-I-5	7.22	2410	-0.190	0.069	0.006	0.011	0.000000	0.000000	-1817.00	1061.18
2	FID	ACIS-I-6	7.25	2409	0.046	-0.005	0.008	0.013	0.000000	0.000000	396.01	1706.18
3	GUIDE	1197745064	9.15	4819	0.021	0.116	0.102	0.165	14.488483	-70.869346	-1681.61	-2211.47
4	GUIDE	1197750936	7.57	4820	0.089	0.093	0.083	0.119	15.387940	-71.549550	-41.18	-116.15
5	GUIDE	1197884536	8.51	4821	0.004	-0.170	0.073	0.118	17.160729	-71.835289	-58.40	2136.87
6	GUIDE	1197884712	8.29	4818	-0.054	-0.061	0.080	0.125	16.087398	-72.252690	1823.00	1767.11
7	GUIDE	1197749664	9.56	4805	-0.057	0.022	0.114	0.184	15.809015	-72.366369	2327.47	1689.63

2.4 Star Slots

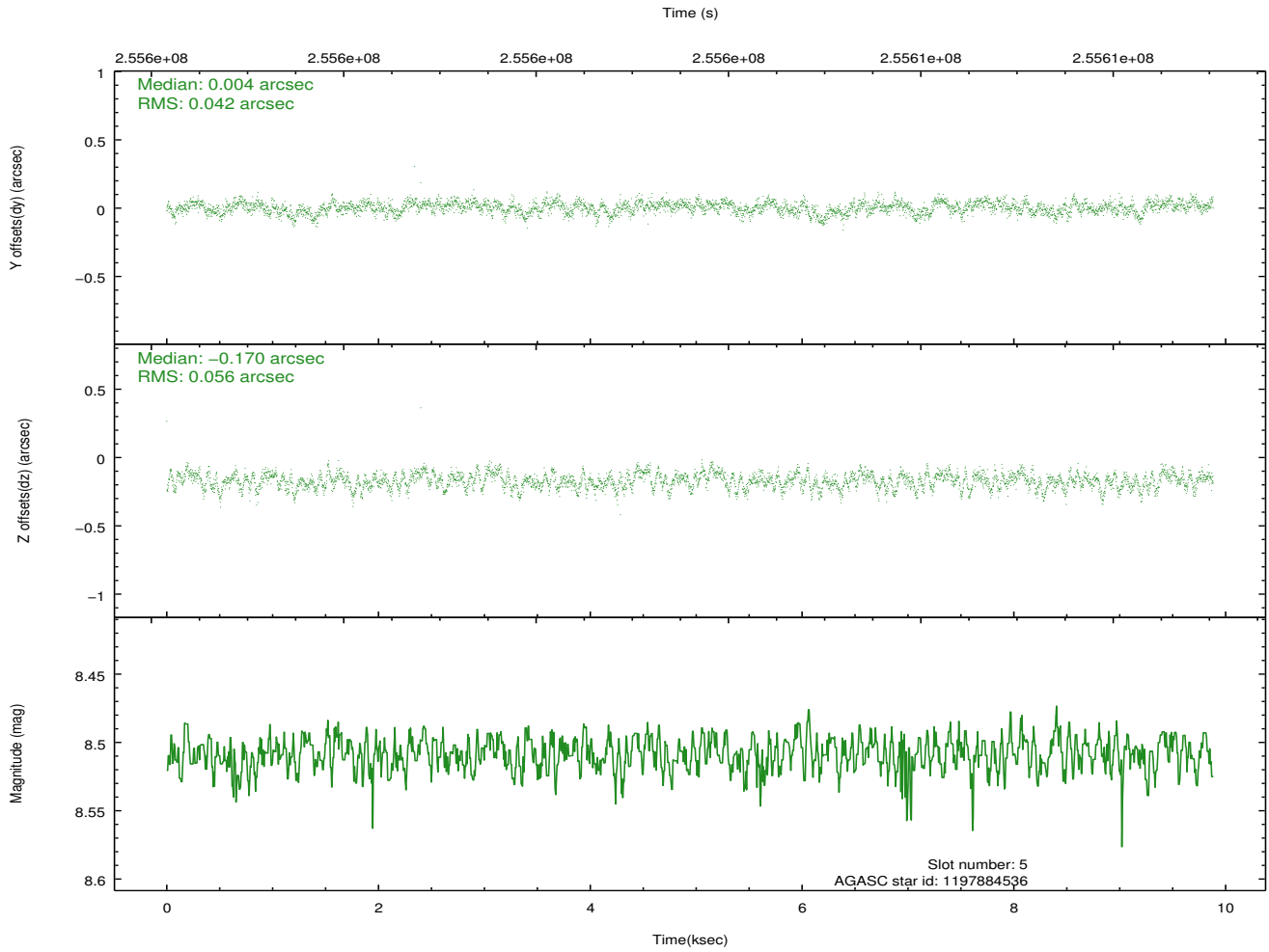
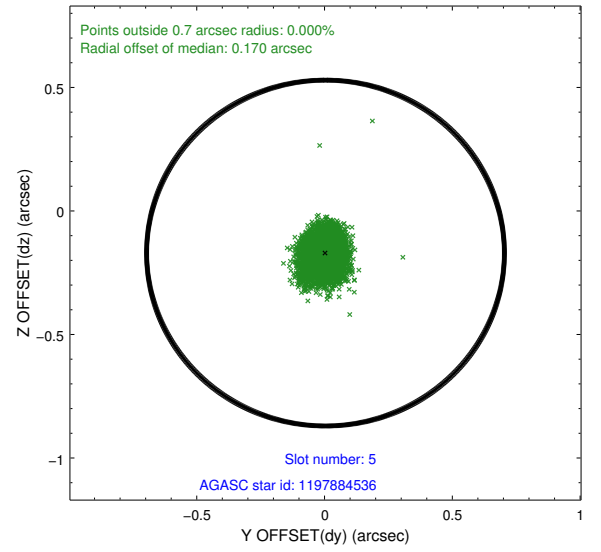
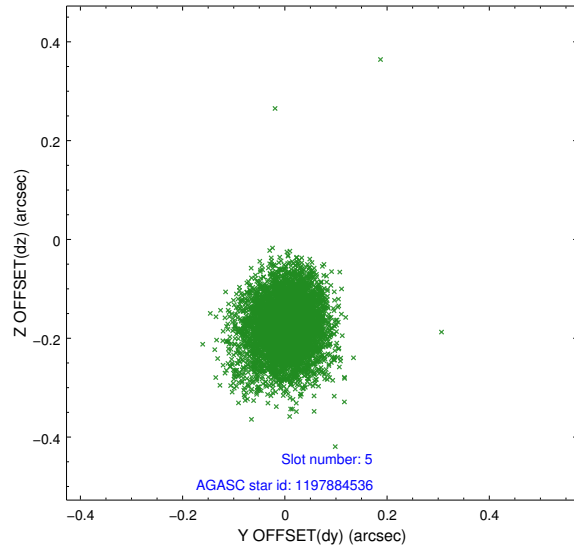
2.4.1 Slot 3



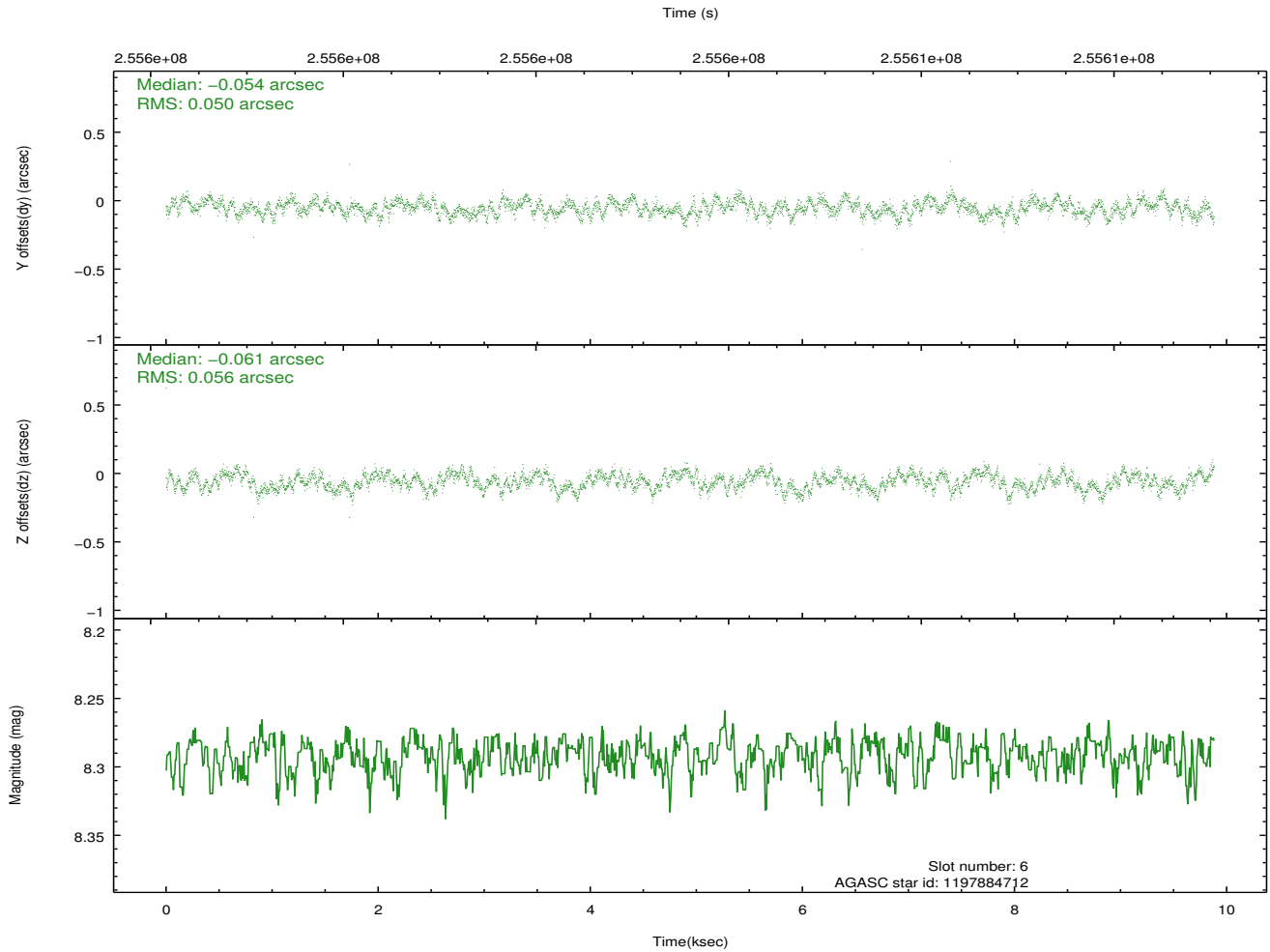
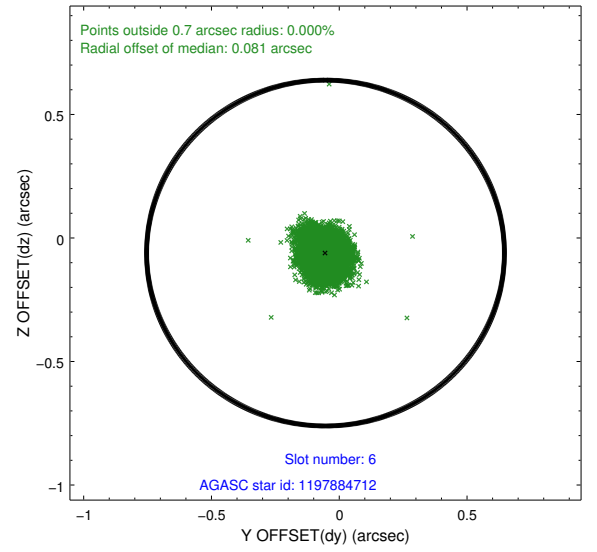
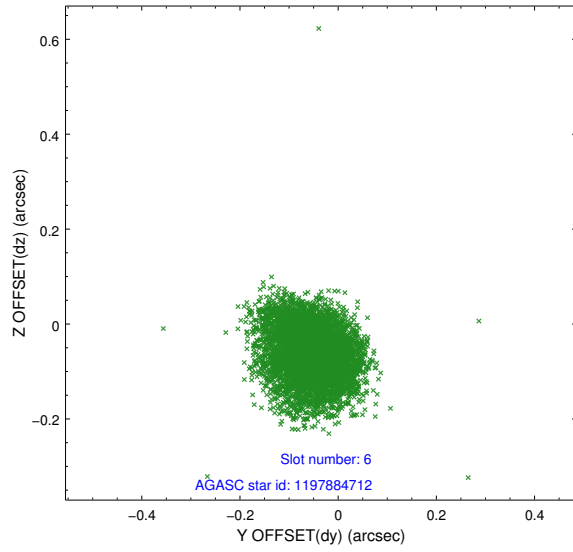
2.4.2 Slot 4



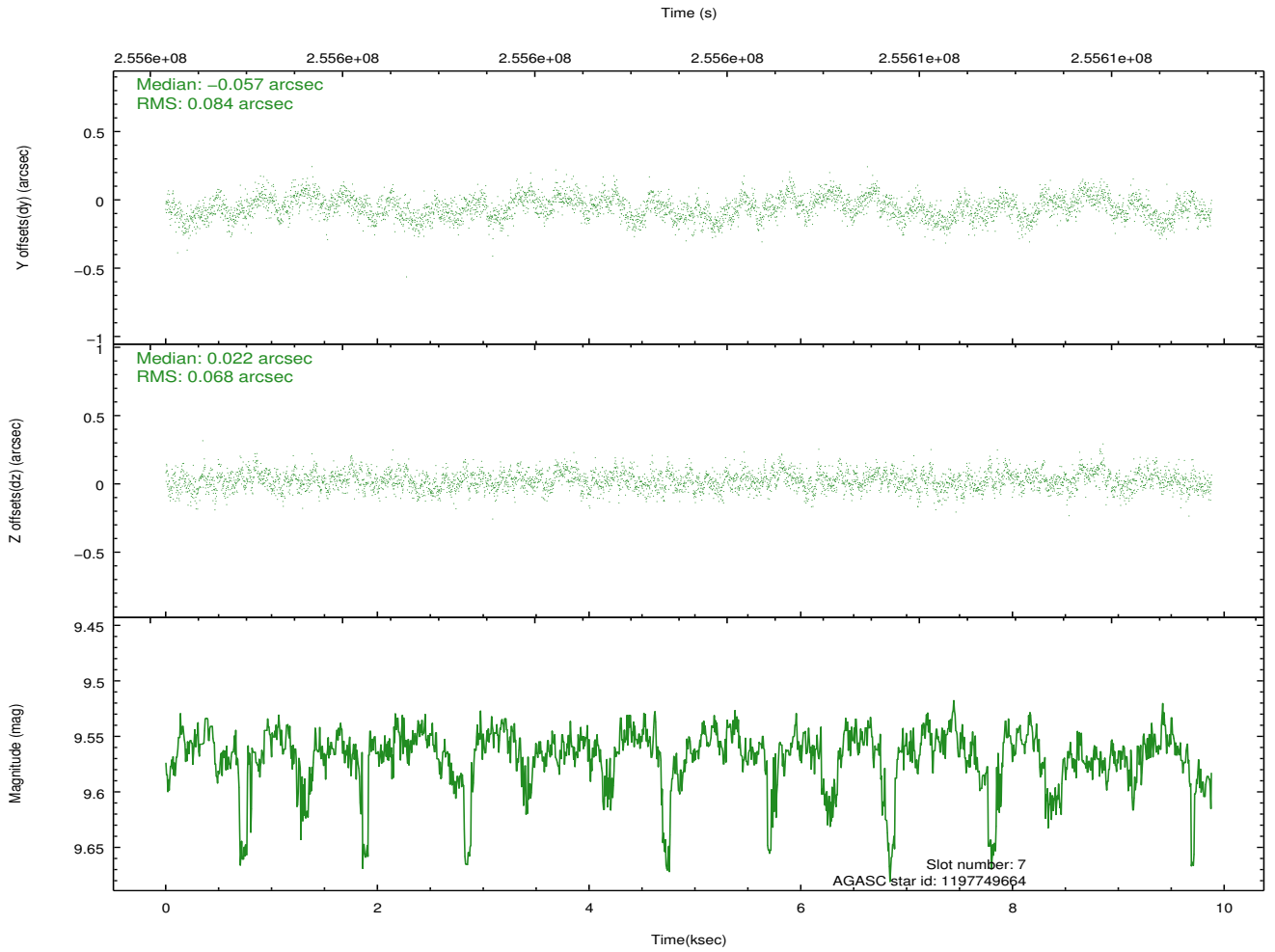
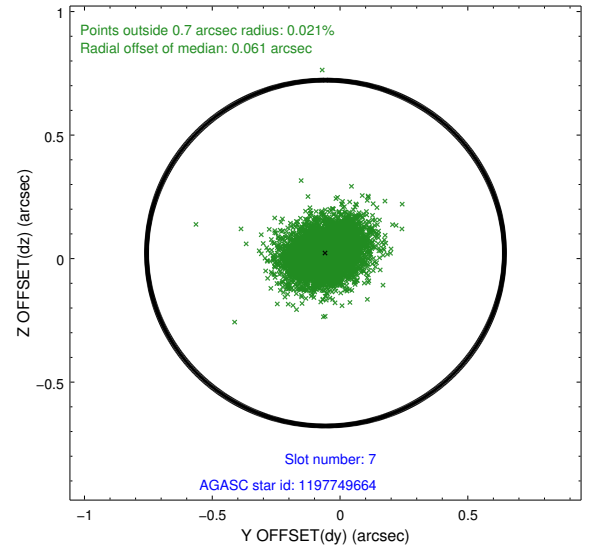
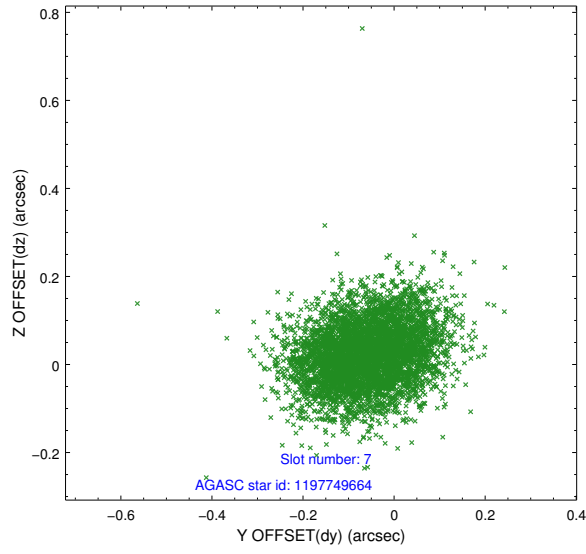
2.4.3 Slot 5



2.4.4 Slot 6

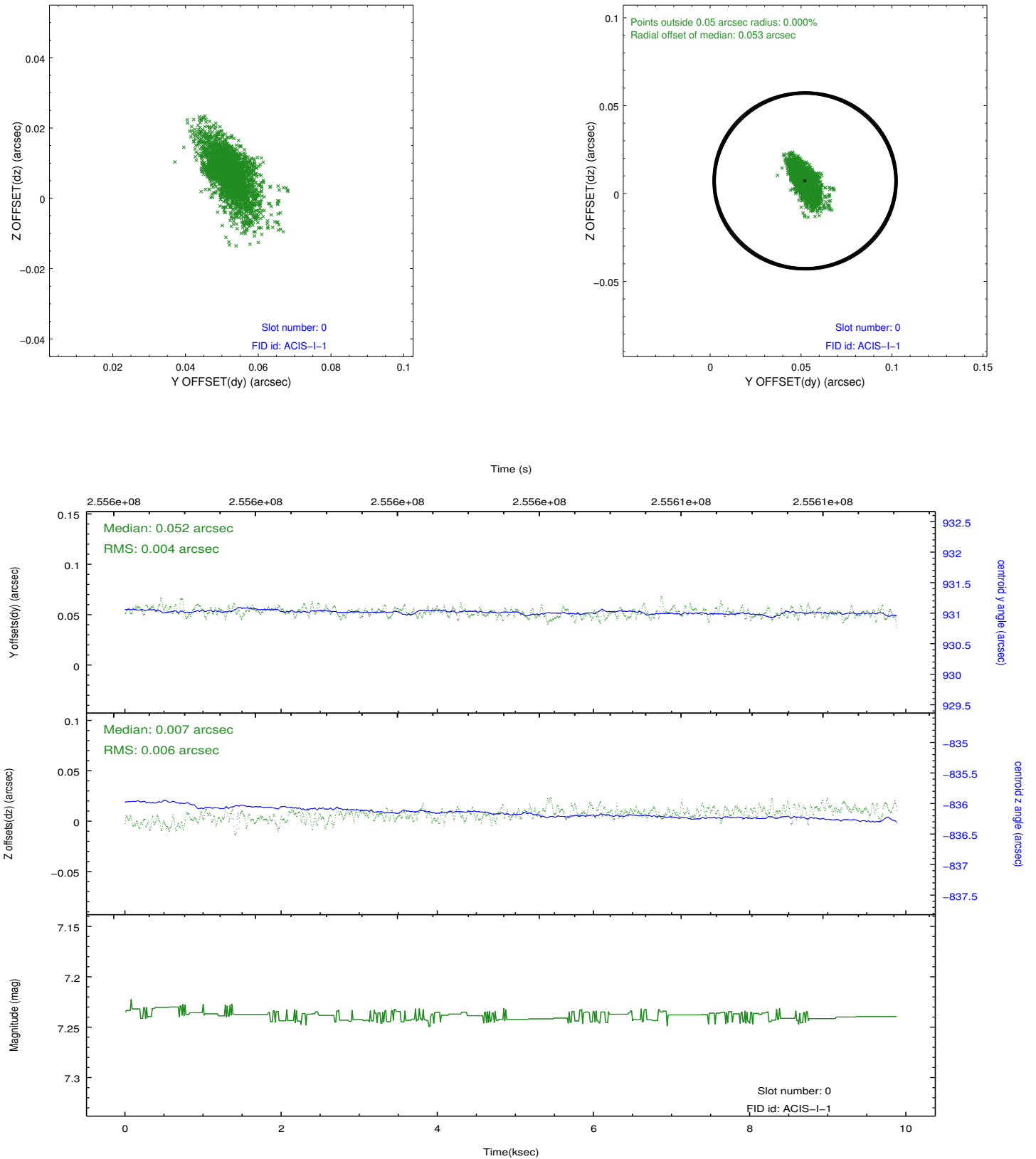


2.4.5 Slot 7

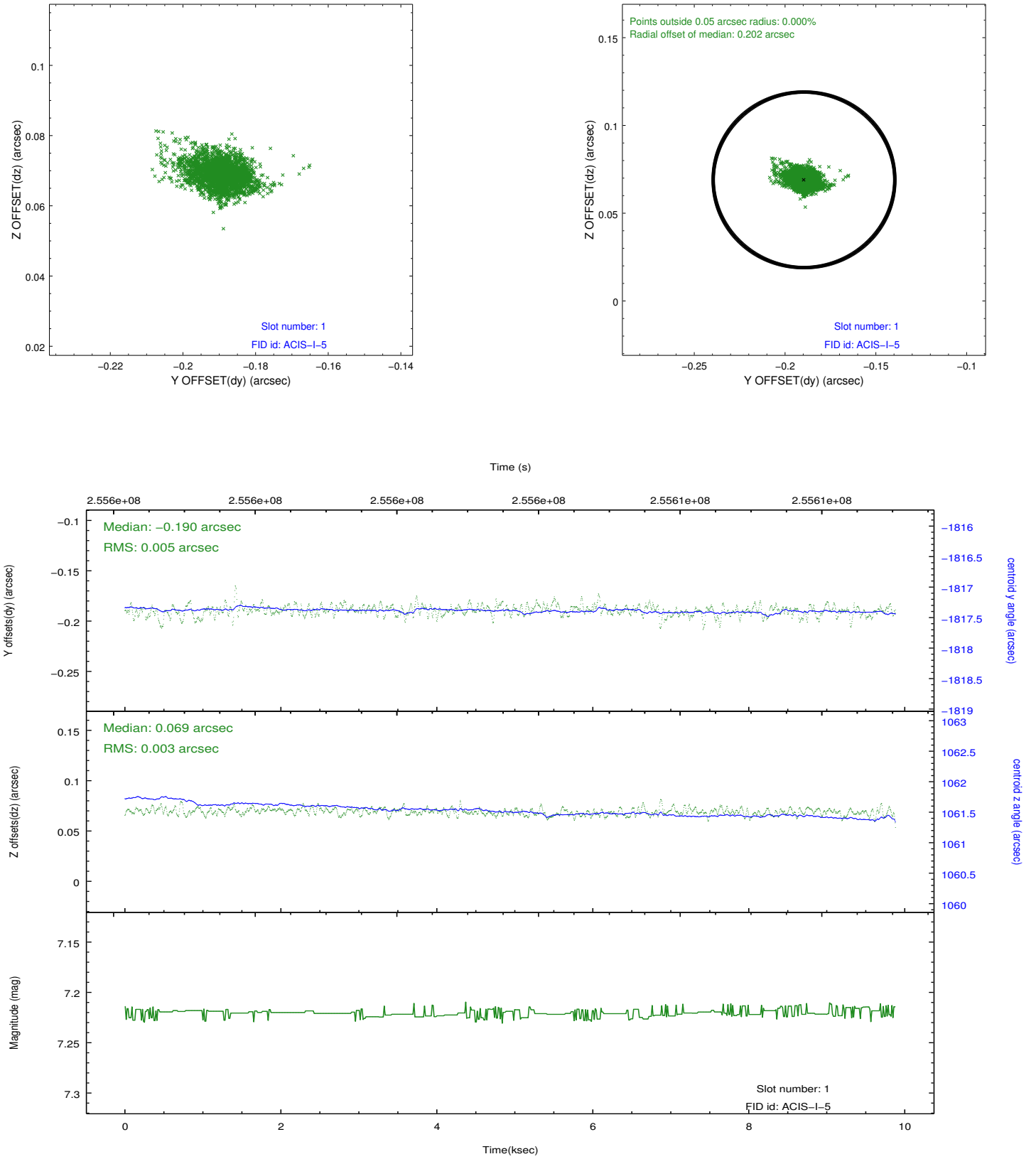


2.5 FID Slots

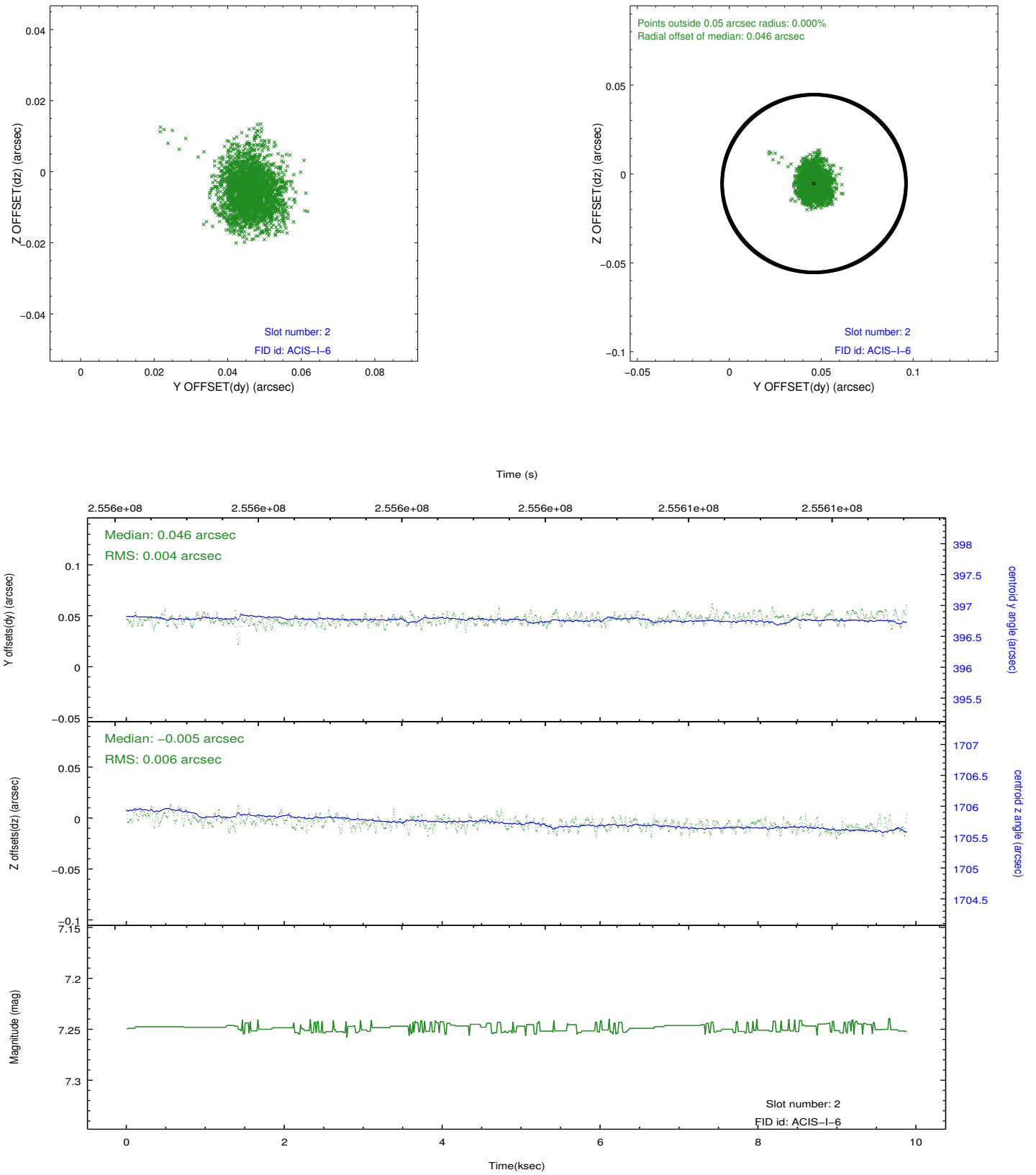
2.5.1 Slot 0



2.5.2 Slot 1



2.5.3 Slot 2



A Summary

A.1 Status

V&V Scientist	Jen Lauer
V&V Date (YYYY-MM-DD)	2012.03.27
V&V Edition	1
V&V Disposition and Status	OK
V&V Charge Time	9.45599996

A.2 Comments