

# V&V Reference Report

## L2 ASCDS Version : 8.4.5

Observation 54441 - L2 Version 2  
Chandra X-Ray Center

L2 Processing Date : Aug 17 2012

## Contents

<b>1</b>	<b>Front</b>	<b>2</b>
<b>2</b>	<b>OBI</b>	<b>3</b>
2.1	OBI . . . . .	3
2.1.1	Images . . . . .	3
2.1.2	Bias . . . . .	3
2.1.3	Parameters . . . . .	4
2.1.4	Events . . . . .	4
2.2	Compared Parameters . . . . .	5
2.3	Star Slots . . . . .	6
2.4	FID Slots . . . . .	6
<b>A</b>	<b>Summary</b>	<b>7</b>
A.1	Status . . . . .	7
A.2	Comments . . . . .	7

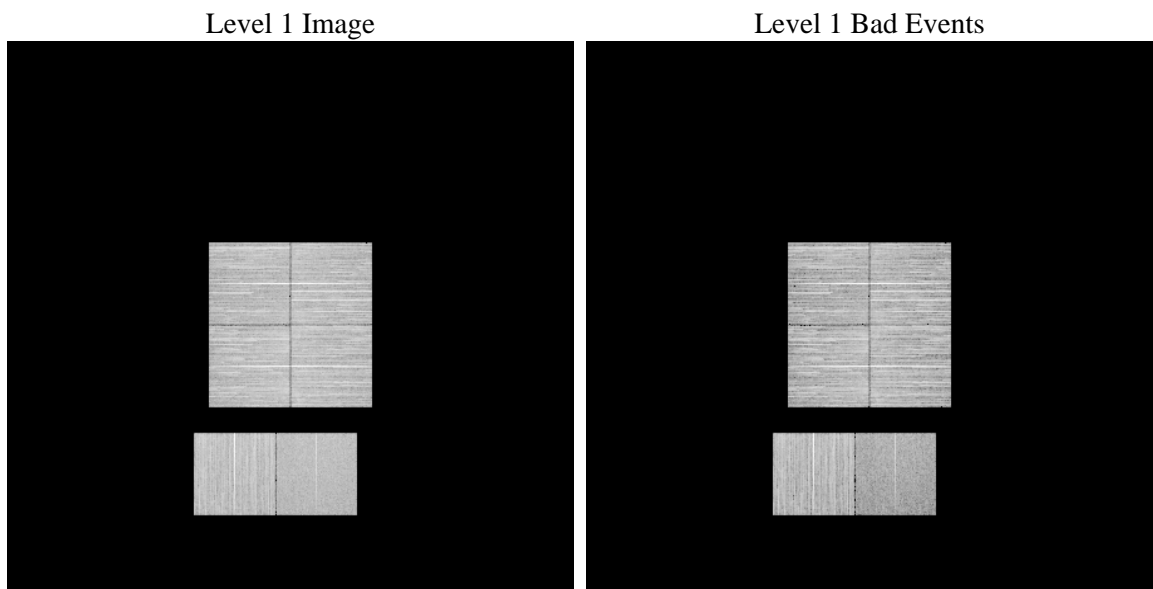
# 1 Front

seq_num	&#160	Sequence number
obs_id	54441	Observation id
title	ACIS-012367 diagnostics	Proposal title
observer	CHANDRA engineering request/realtime commanding	Principal investig
object	&#160	Source name
dtcycle	0	&#160
cycle	P	events from which exps? Prim/Second/Both
ra_targ	0.0	Observer's specified target RA [deg]
dec_targ	0.0	Observer's specified target Dec [deg]
ra_nom	321.0219809223	Nominal RA [deg]
dec_nom	-41.976300587621	Nominal Dec [deg]
roll_nom	22.524451368189	Nominal Roll [deg]
revision	2	Processing version of data
ontime	8088.3748880029	Sum of GTIs [s]
livetime	7985.9550149363	Livetime [s]
ontime0	8088.3338479996	Sum of GTIs [s]
ontime1	8088.2928079963	Sum of GTIs [s]
ontime2	8088.251767993	Sum of GTIs [s]
ontime3	8088.4159280062	Sum of GTIs [s]
ontime6	8088.2107279897	Sum of GTIs [s]
ontime7	8088.3748880029	Sum of GTIs [s]
l2events	243975	Number of level 2 events

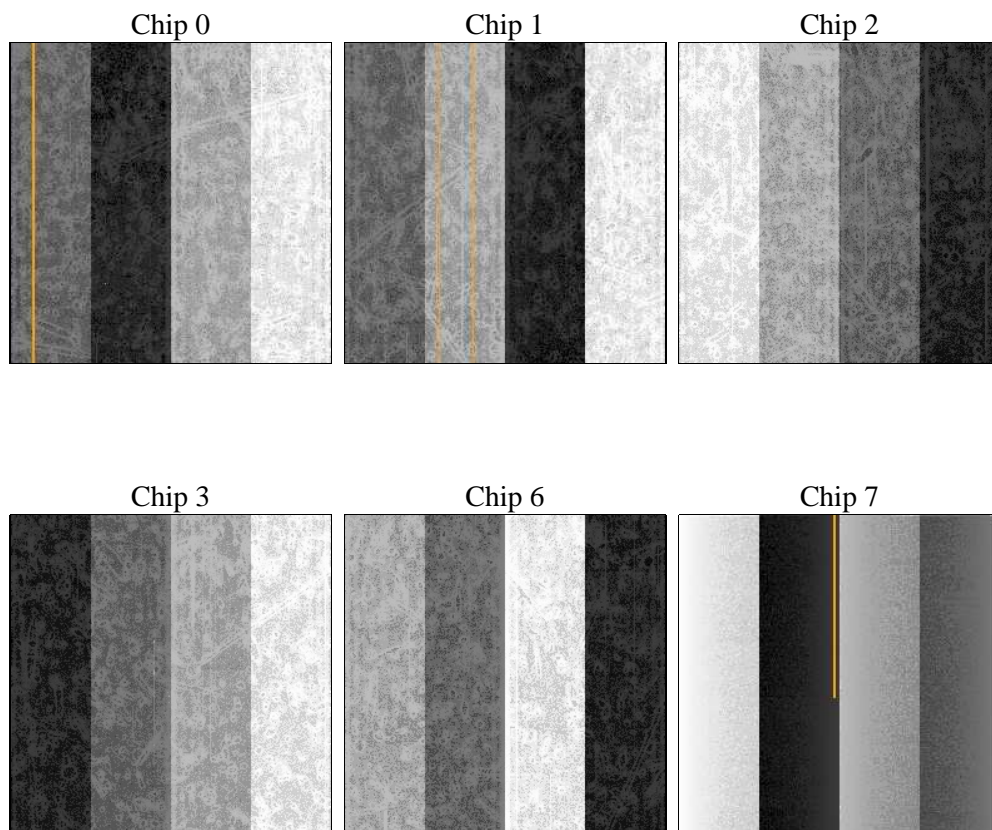
## 2 OBI

### 2.1 OBI

#### 2.1.1 Images



#### 2.1.2 Bias



### 2.1.3 Parameters

obi_num	0	Obi number	sched_exp_time	0.0	[s] Scheduled observation exposure time
ascdsver	8.4.5	Processing system revision	ontime	8088.3748880029	Sum of GTIs [s]
caldsver	4.5.1.1	&#160	ontime0	8088.3338479996	Sum of GTIs [s]
date	2012-08-17T15:24:04	Date and time of file creation	ontime1	8088.2928079963	Sum of GTIs [s]
revision	2	Processing version of data	ontime2	8088.251767993	Sum of GTIs [s]
			ontime3	8088.4159280062	Sum of GTIs [s]
			ontime6	8088.2107279897	Sum of GTIs [s]
			ontime7	8088.3748880029	Sum of GTIs [s]
			l1events	964043	Number of level 1 events

### 2.1.4 Events

	ccd 0	ccd 1	ccd 2	ccd 3	ccd 6	ccd 7		ccd 0	ccd 1	ccd 2	ccd 3	ccd 6	ccd 7
level 1 events	155194	166014	169668	167704	170451	135012	grade 0 events	20108	19857	20998	20995	20488	10381
rejected events	117159	127685	131194	129044	130900	70013		12%	11%	12%	12%	12%	7%
rejected %	75%	76%	77%	76%	76%	51%	grade 1 events	119	98	122	117	96	107
								0%	0%	0%	0%	0%	0%
							grade 2 events	7639	7974	7433	7393	8050	16366
								4%	4%	4%	4%	4%	12%
							grade 3 events	2671	2549	2664	2751	2654	5751
								1%	1%	1%	1%	1%	4%
							grade 4 events	2610	2603	2679	2731	2558	5636
								1%	1%	1%	1%	1%	4%
							grade 5 events	3044	2954	2902	3282	3225	7823
								1%	1%	1%	1%	1%	5%
							grade 6 events	5989	6362	5725	5856	6872	28499
								3%	3%	3%	3%	4%	21%
							grade 7 events	113014	123617	127145	124579	126508	60449
								72%	74%	74%	74%	74%	44%

## 2.2 Compared Parameters

Parameter	Planned	Actual
Instrument	ACIS	ACIS
Detector	ACIS-012367	ACIS-012367
Grating	NONE	NONE
Data mode	FAINT	FAINT
Observation mode	SECONDARY	SECONDARY
[deg] Pointing RA	0	321.0219809223035
[deg] Pointing Dec	0	-41.9763005876214
[deg] Pointing Roll	0.0	22.52445136818882
SIM focus pos (mm)	-1.4281808131	-1.4281808131
[mm] SIM defocus	0.1051557500557434	0.1051557500557434
SIM translation stage pos (mm)	250.4660330802	250.4660330802
[mm] SIM translation stage offset	-0.01005726120527584	-0.01005726120527584
[s] Observation start time (MET)	460138761.667763	460138761.667763
Observation start date	2012-07-31T16:19:22	2012-07-31T16:19:21
[s] Observation end time (MET)	460148309.427733	460148309.427733
Observation end date	2012-07-31T18:58:29	2012-07-31T18:58:29
Read mode	TIMED	TIMED

Parameter	Planned	Actual
Obspar format version number	7	7
Obspar file type	PREDICTED	ACTUAL
Obspar update status	OVERRIDE	OVERRIDE
Number of optional ACIS chips dropped	0	0
On-chip summing requested	N	N
Subarray requested	NONE	NONE
Alternating exposures requested	N	N
[s] Primary exposure time	3.2	3.2

## **2.3 Star Slots**

## **2.4 FID Slots**

## A Summary

### A.1 Status

V&V Scientist	Jen Lauer
V&V Date (YYYY-MM-DD)	2012.08.22
V&V Edition	1
V&V Disposition and Status	OK
V&V Charge Time	8.0883748880029

### A.2 Comments