

# V&V Reference Report

## L2 ASCDS Version : 8.4.5

Observation 5341 - L2 Version 3  
Chandra X-Ray Center

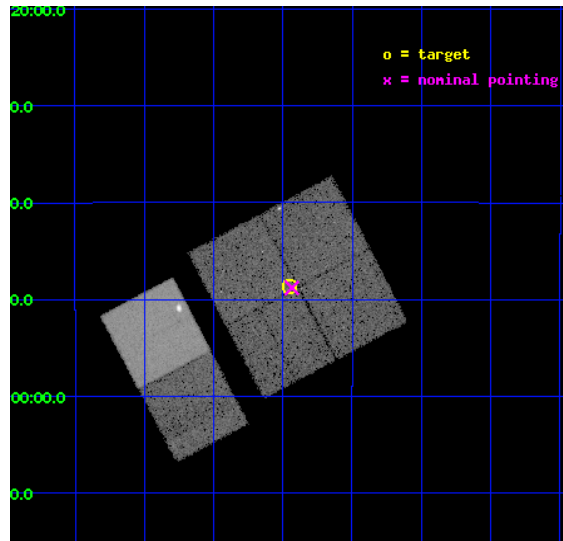
L2 Processing Date : Dec 3 2012

## Contents

<b>1</b>	<b>Front</b>	<b>2</b>
<b>2</b>	<b>OBI</b>	<b>3</b>
2.1	OBI . . . . .	3
2.1.1	Images . . . . .	3
2.1.2	Bias . . . . .	3
2.1.3	Parameters . . . . .	4
2.1.4	Events . . . . .	4
2.2	Compared Parameters . . . . .	5
2.3	Aspect . . . . .	6
2.4	Star Slots . . . . .	9
2.4.1	Slot 3 . . . . .	9
2.4.2	Slot 4 . . . . .	10
2.4.3	Slot 5 . . . . .	11
2.4.4	Slot 6 . . . . .	12
2.4.5	Slot 7 . . . . .	13
2.5	FID Slots . . . . .	14
2.5.1	Slot 0 . . . . .	14
2.5.2	Slot 1 . . . . .	15
2.5.3	Slot 2 . . . . .	16
<b>A</b>	<b>Summary</b>	<b>17</b>
A.1	Status . . . . .	17
A.2	Comments . . . . .	17

# 1 Front

seq_num	500425	Sequence number
obs_id	5341	Observation id
title	Center-filled Supernova Remnant G16.85-1.05 and its surroundings	P
observer	Professor Gordon Garmire	Principal investigator
object	SNR G16.85-1.05	Source name
dtcycle	0	&#160
cycle	P	events from which exps? Prim/Second/Both
ra_targ	276.3625	Observer's specified target RA [deg]
dec_targ	-14.810556	Observer's specified target Dec [deg]
ra_nom	276.3587500841	Nominal RA [deg]
dec_nom	-14.813515031669	Nominal Dec [deg]
roll_nom	242.20772448514	Nominal Roll [deg]
revision	3	Processing version of data
ontime	18185.599932253	Sum of GTIs [s]
livetime	17955.322915858	Livetime [s]
ontime0	18185.599932253	Sum of GTIs [s]
ontime1	18185.599932253	Sum of GTIs [s]
ontime2	18185.599932253	Sum of GTIs [s]
ontime3	18185.599932253	Sum of GTIs [s]
ontime6	18182.358932078	Sum of GTIs [s]
ontime7	18185.599932253	Sum of GTIs [s]
l2events	157561	Number of level 2 events

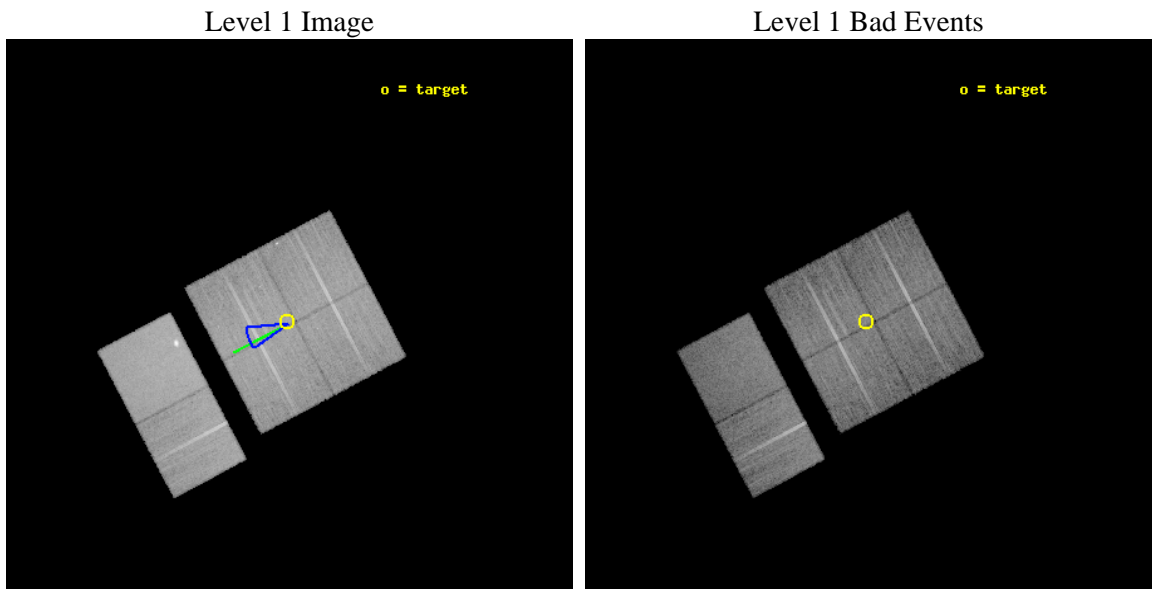




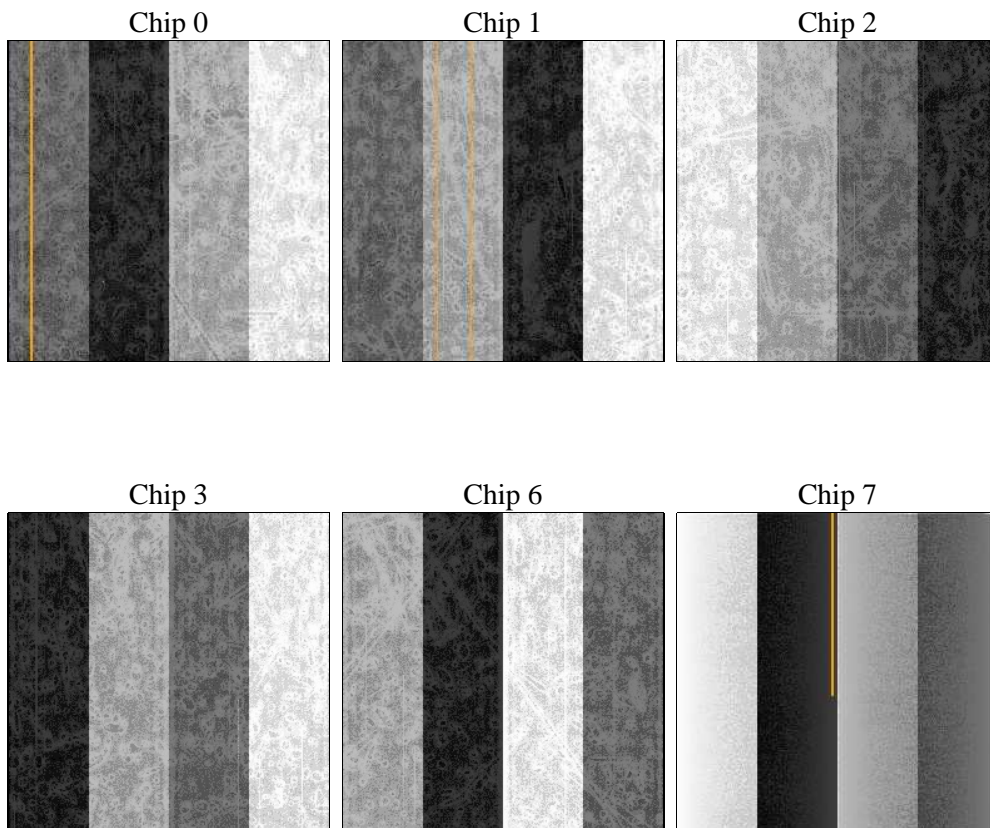
## 2 OBI

### 2.1 OBI

#### 2.1.1 Images



#### 2.1.2 Bias



### 2.1.3 Parameters

obi_num	1	Obi number	sched_exp_time	18000.000000	[s] Scheduled observation exposure time
ascdsver	8.4.5	Processing system revision	ontime	18185.599932253	Sum of GTIs [s]
caldsver	4.5.2	&#160	ontime0	18185.599932253	Sum of GTIs [s]
date	2012-12-03T20:53:25	Date and time of file creation	ontime1	18185.599932253	Sum of GTIs [s]
revision	3	Processing version of data	ontime2	18185.599932253	Sum of GTIs [s]
			ontime3	18185.599932253	Sum of GTIs [s]
			ontime6	18182.358932078	Sum of GTIs [s]
			ontime7	18185.599932253	Sum of GTIs [s]
			l1events	876986	Number of level 1 events

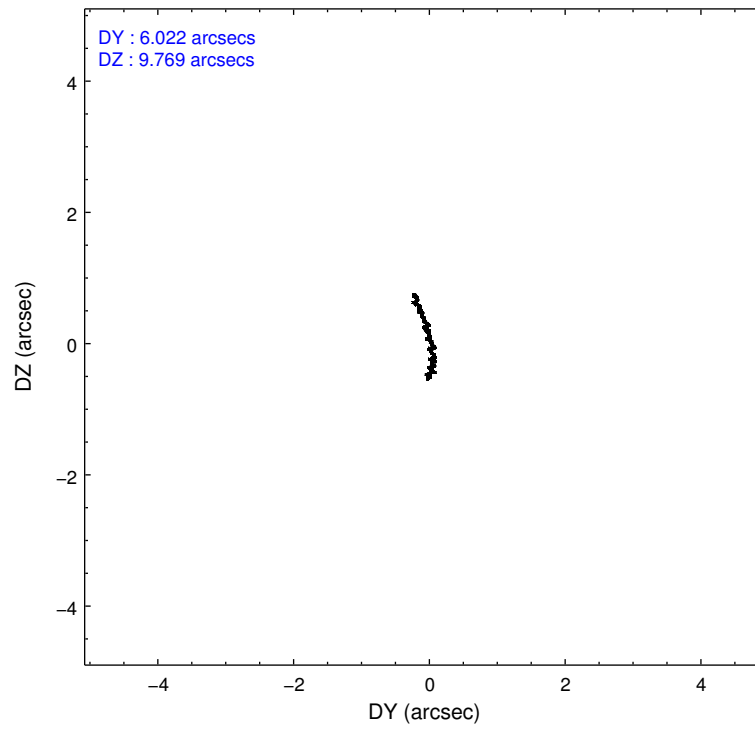
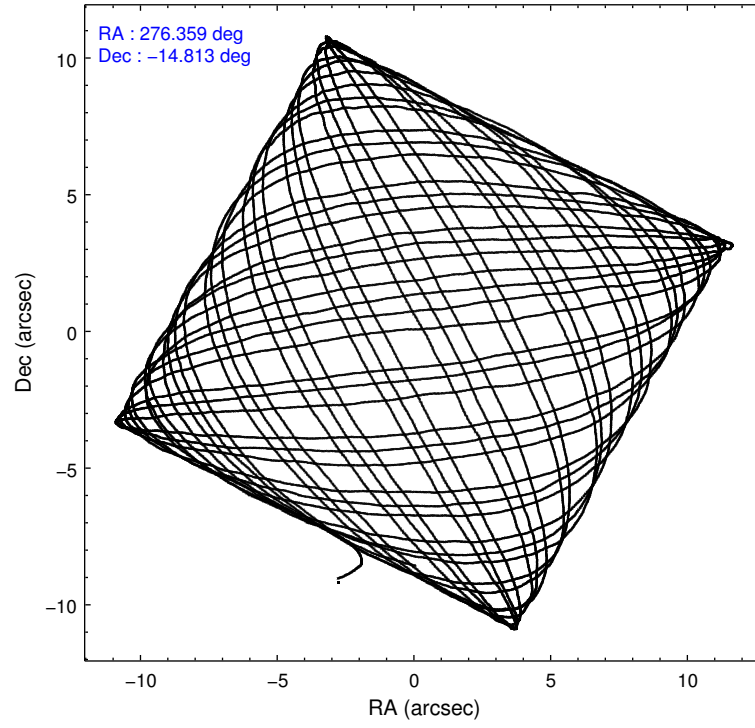
### 2.1.4 Events

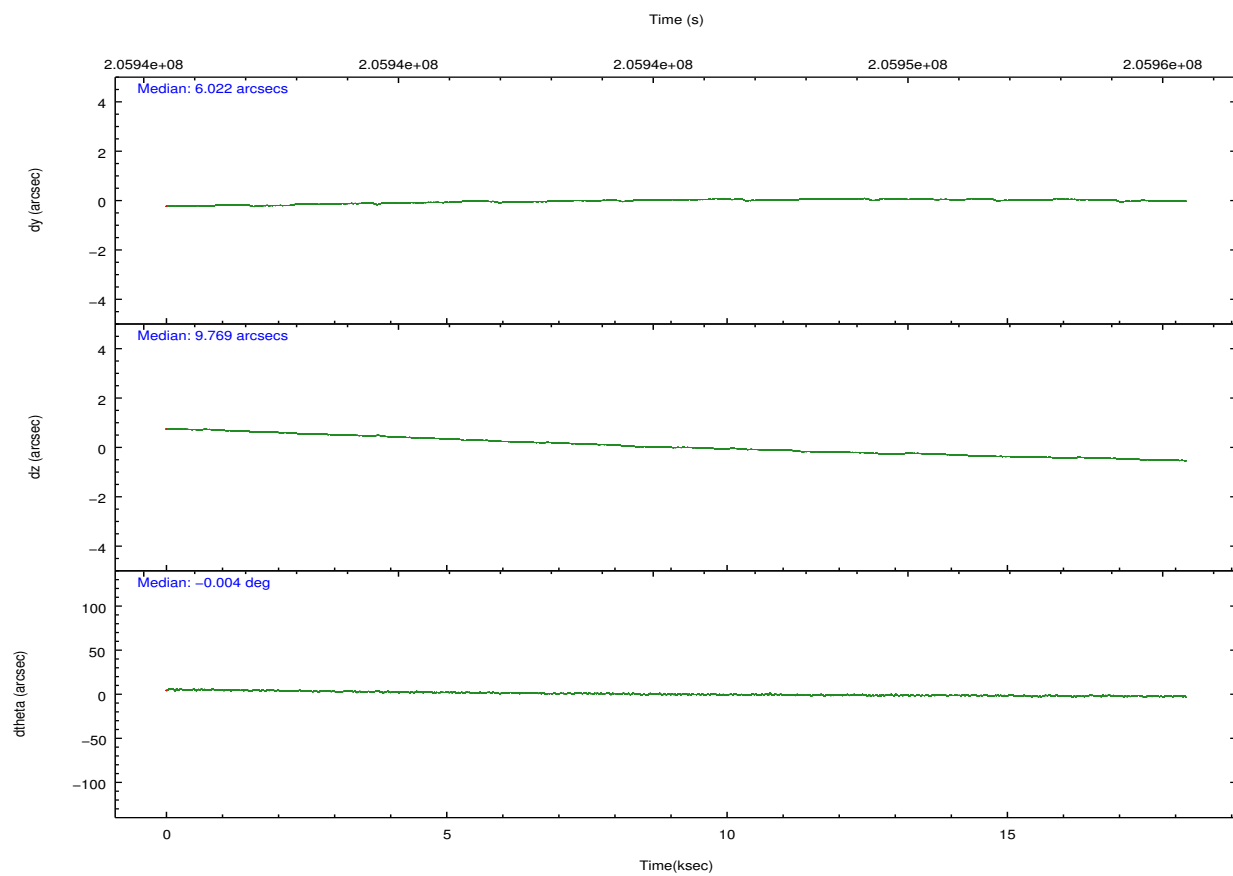
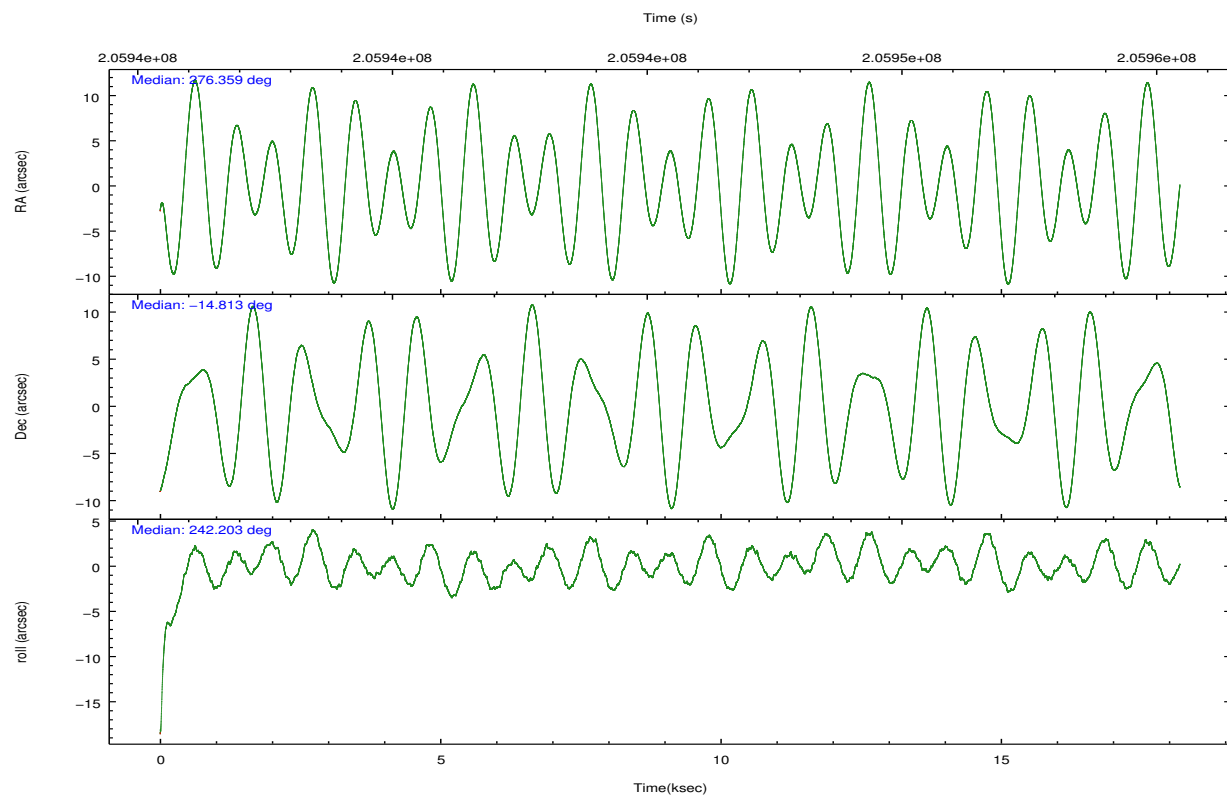
	ccd 0	ccd 1	ccd 2	ccd 3	ccd 6	ccd 7		ccd 0	ccd 1	ccd 2	ccd 3	ccd 6	ccd 7
level 1 events	127567	131549	136798	140789	145881	194402	grade 0 events	7811	8043	7840	8122	7475	8767
rejected events	110249	112961	119882	123523	128304	110851		6%	6%	5%	5%	5%	4%
rejected %	86%	85%	87%	87%	87%	57%	grade 1 events	74	70	97	105	68	183
								0%	0%	0%	0%	0%	0%
							grade 2 events	3518	3898	3433	3309	3562	17191
								2%	2%	2%	2%	2%	8%
							grade 3 events	1708	1775	1562	1619	1598	7728
								1%	1%	1%	1%	1%	3%
							grade 4 events	1607	1660	1543	1583	1635	7895
								1%	1%	1%	1%	1%	4%
							grade 5 events	5408	5830	5377	6142	6632	18106
								4%	4%	3%	4%	4%	9%
							grade 6 events	2918	3468	2771	2878	3512	43108
								2%	2%	2%	2%	2%	22%
							grade 7 events	104523	106805	114175	117031	121399	91424
								81%	81%	83%	83%	83%	47%

## 2.2 Compared Parameters

Parameter	Planned	Actual	Parameter	Planned	Actual
Instrument	ACIS	ACIS	Obspar format version number	7	7
Detector	ACIS-012367	ACIS-012367	Obspar file type	PREDICTED	ACTUAL
Grating	NONE	NONE	Obspar update status	NONE	UPDATED
Data mode	FAINT	FAINT	Number of optional ACIS chips dropped	0	0
Observation mode	POINTING	POINTING	On-chip summing requested	N	N
[deg] Pointing RA	276.357581	276.3587500841003	Subarray requested	NONE	NONE
[deg] Pointing Dec	-14.786127	-14.813515031669	Alternating exposures requested	N	N
[deg] Pointing Roll	241.998752	242.2077244851356	[s] Primary exposure time	0.000000	3.2
[deg] Roll angle	250.000000	250.000000			
[deg] Roll tolerance	15.000000	15.000000			
Roll constraint allows 180D rotation	N	N			
[mm] SIM focus pos	-0.782348	-0.7809083437167272			
[mm] SIM defocus	0	0.001439871863259334			
[mm] SIM translation stage pos	-233.592463	-233.5874344608287			
[mm] SIM translation stage offset	0	-0.005018542100998502			
[s] Observation start time (MET)	205936537.184000	205935342.41671			
Observation start date	2004-07-11T12:34:33	2004-07-11T12:15:42			
[s] Observation end time (MET)	205954537.184000	205955616.40511			
Observation end date	2004-07-11T17:34:33	2004-07-11T17:53:36			
Read mode	TIMED	TIMED			

## 2.3 Aspect



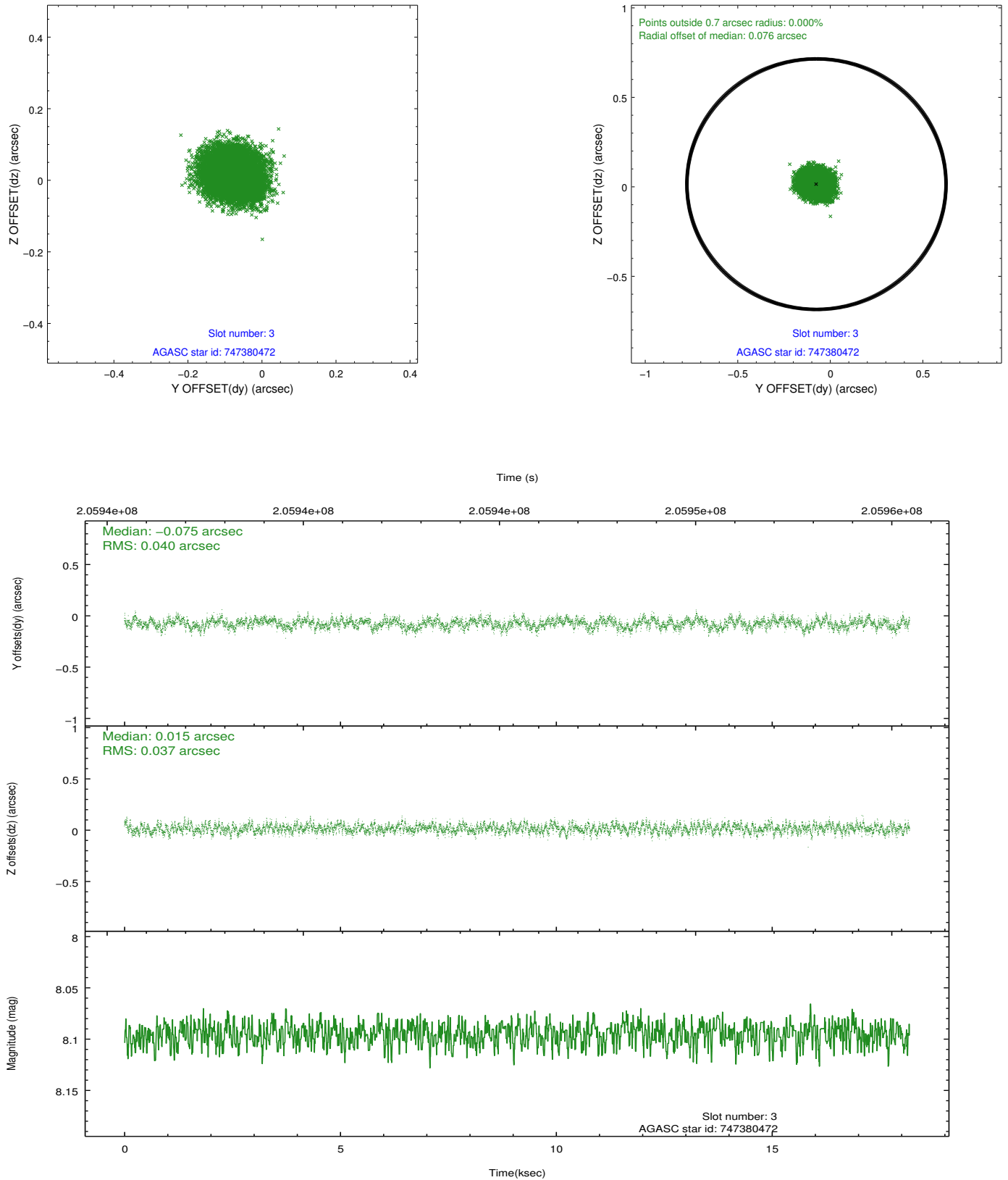


### Slot Statistics

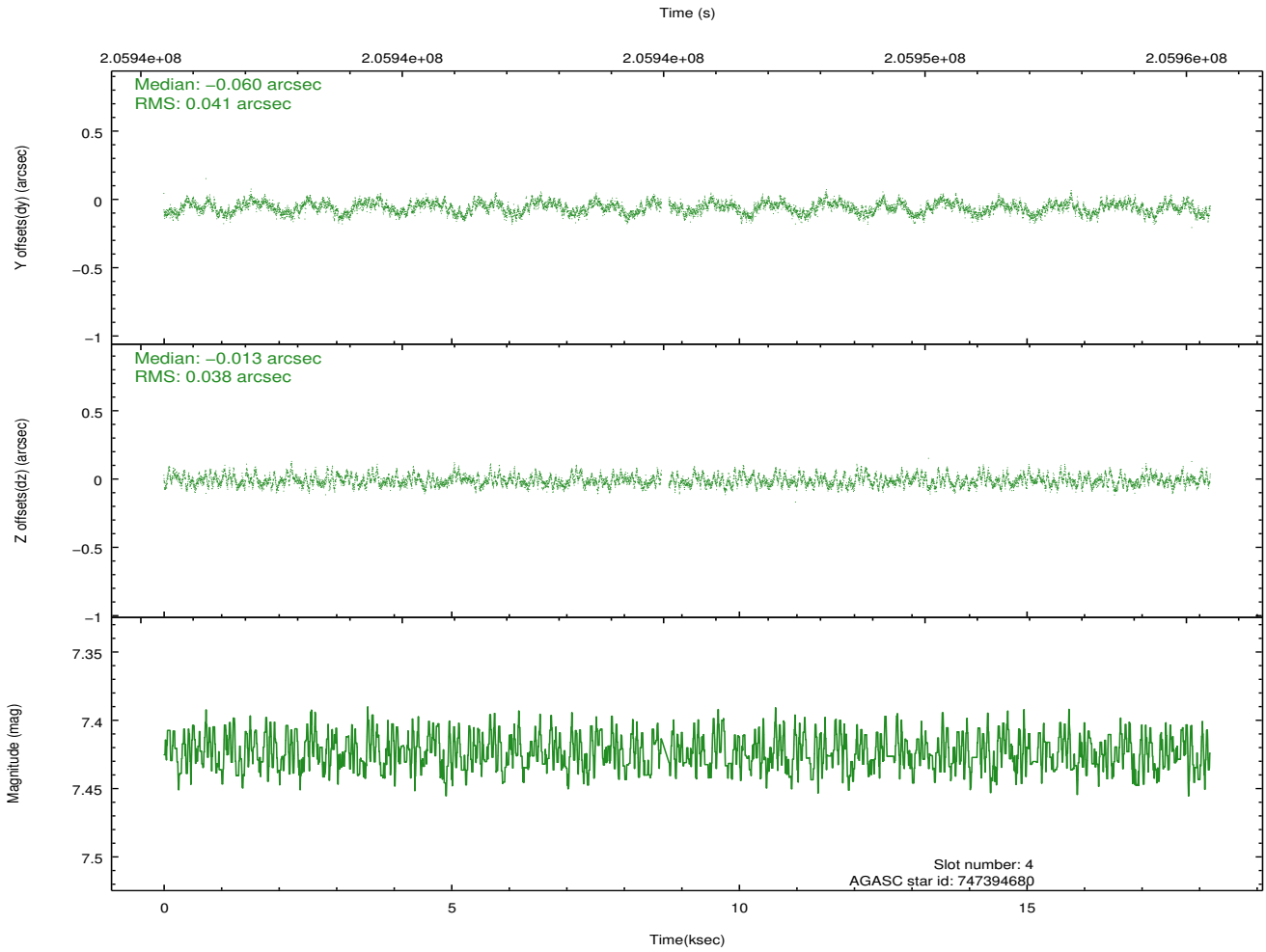
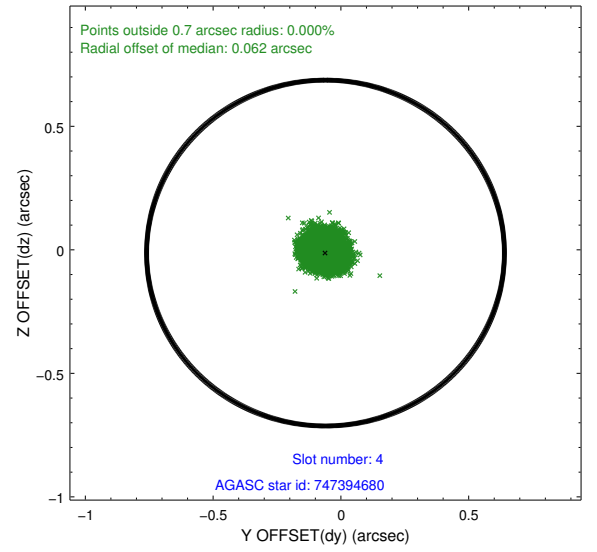
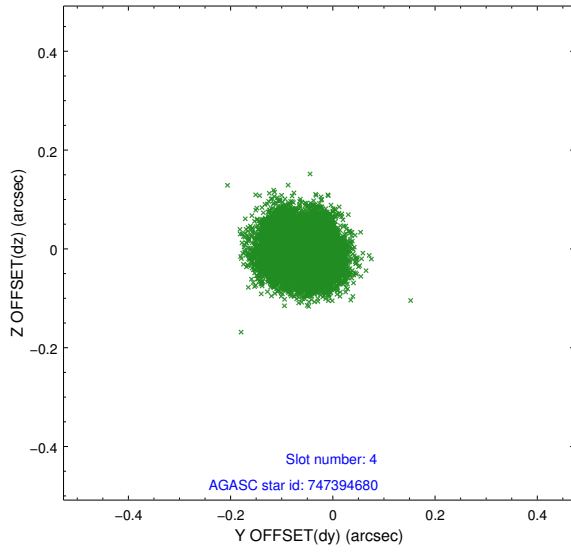
slot	status	id	mag	n_pts	med_dy	med_dz	dr1	dr2	ra	dec	mean_y	mean_z
0	FID	ACIS-I-1	7.25	4435	0.038	-0.013	0.011	0.020	0.000000	0.000000	933.79	-833.27
1	FID	ACIS-I-5	7.22	4437	-0.055	0.085	0.020	0.037	0.000000	0.000000	-1814.36	1064.11
2	FID	ACIS-I-6	7.24	4436	-0.073	-0.002	0.025	0.038	0.000000	0.000000	398.89	1708.86
3	GUIDE	747380472	8.09	8873	-0.075	0.015	0.059	0.093	276.808218	-14.697222	-1017.98	1236.07
4	GUIDE	747394680	7.42	8811	-0.060	-0.013	0.062	0.094	276.275759	-14.649373	-300.87	-482.54
5	GUIDE	821297448	7.46	8874	-0.030	-0.130	0.053	0.086	276.406695	-15.152775	1085.34	770.46
6	GUIDE	821318160	7.74	8865	0.102	0.111	0.053	0.090	276.598709	-15.630197	2291.13	2165.60
7	GUIDE	747380456	8.61	8870	0.061	0.018	0.055	0.089	276.136187	-14.775528	329.00	-697.74

## 2.4 Star Slots

### 2.4.1 Slot 3

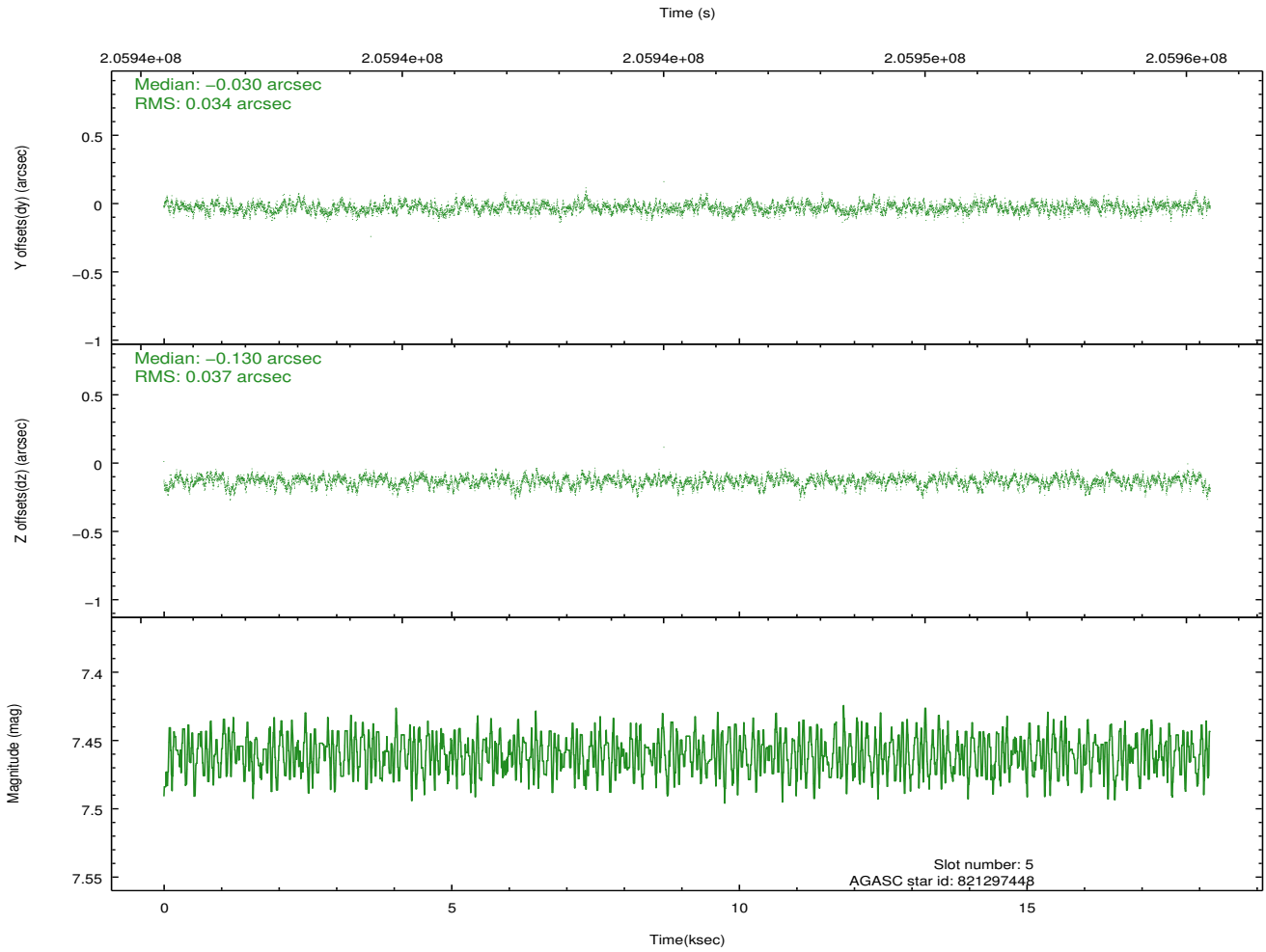
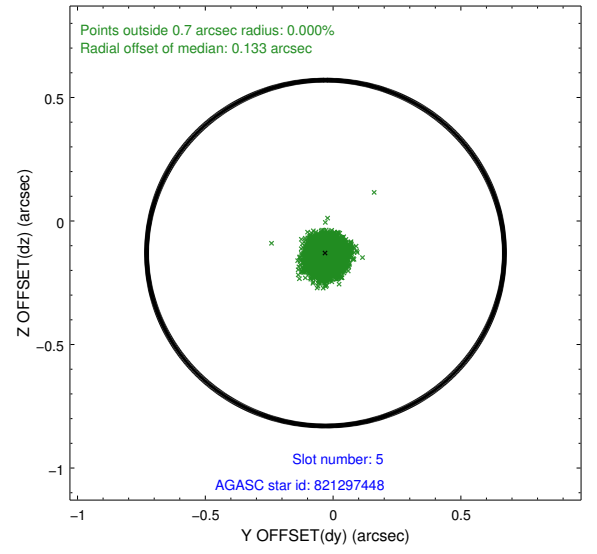
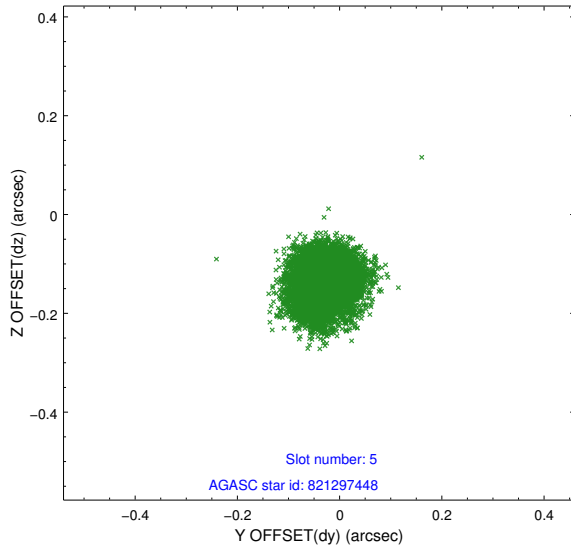


## 2.4.2 Slot 4

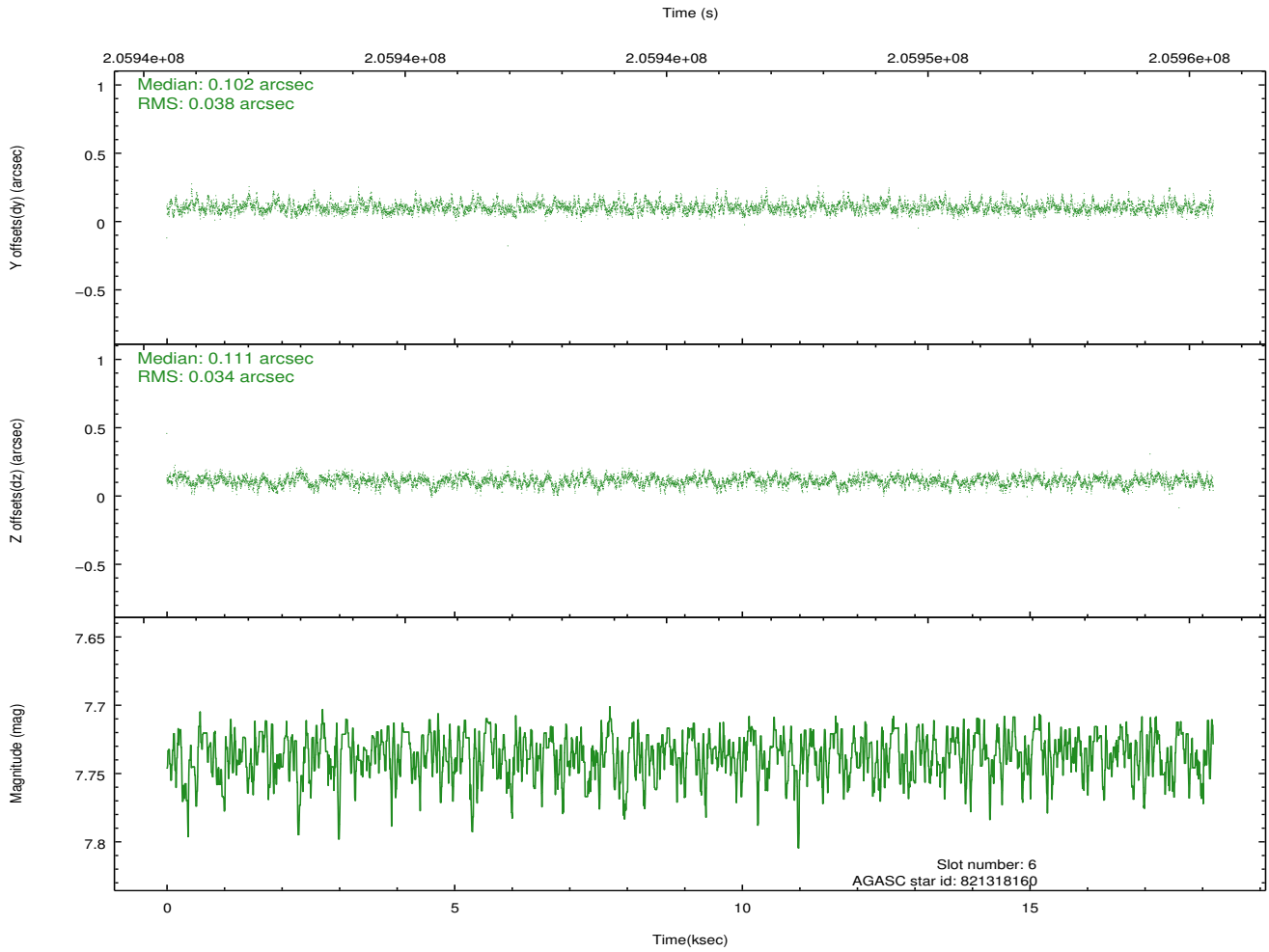
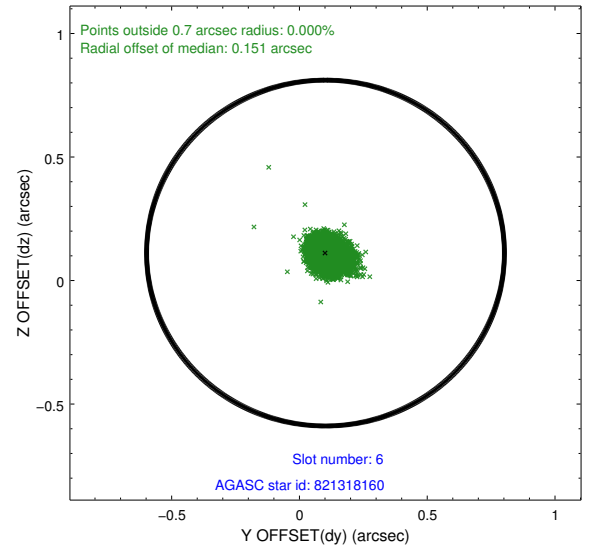
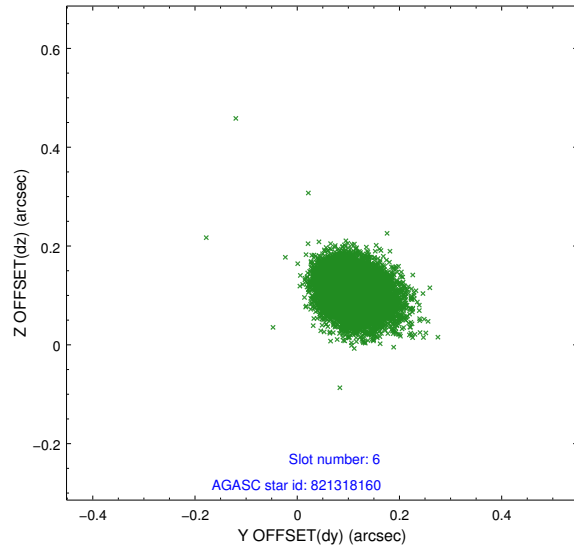




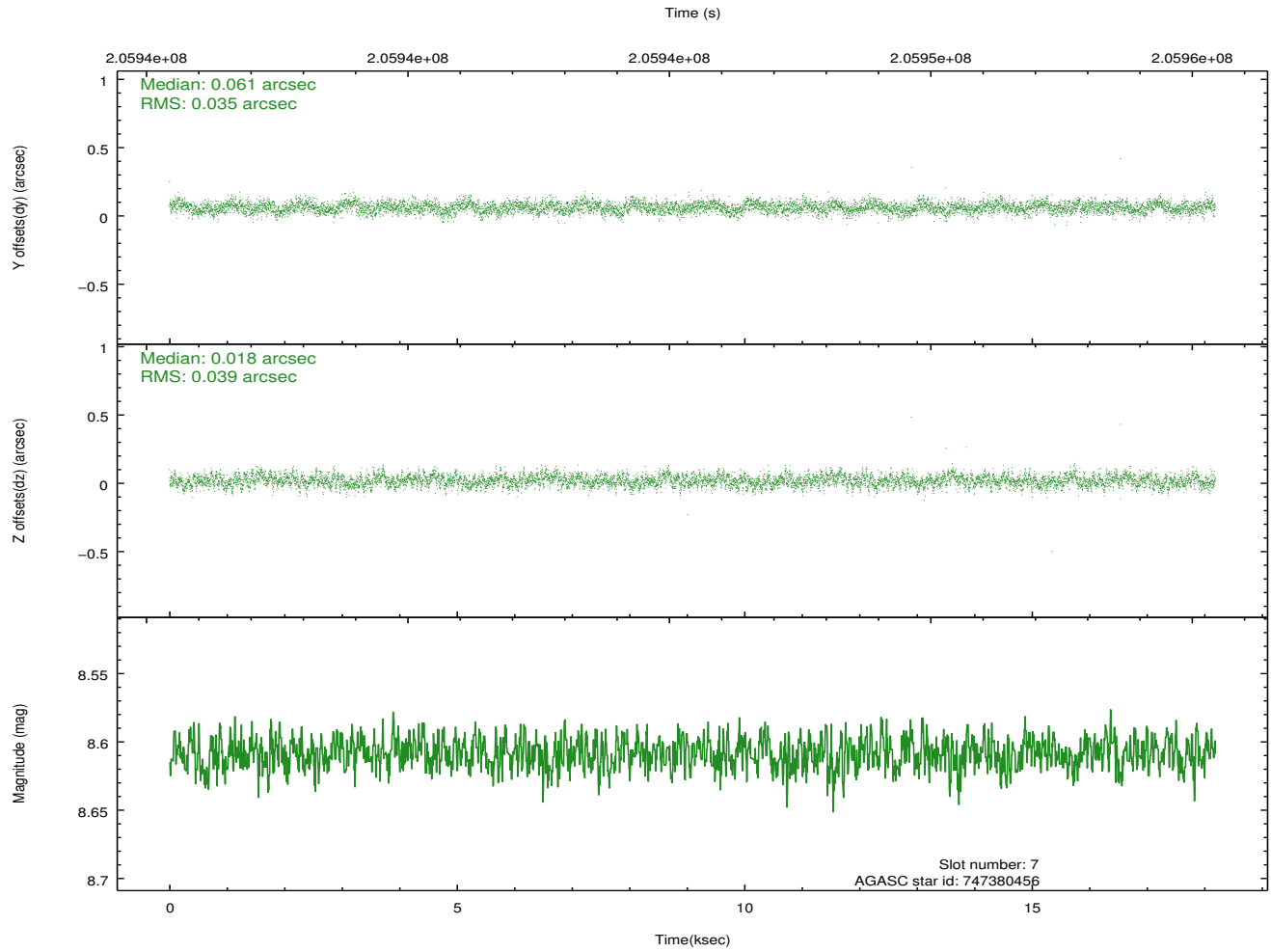
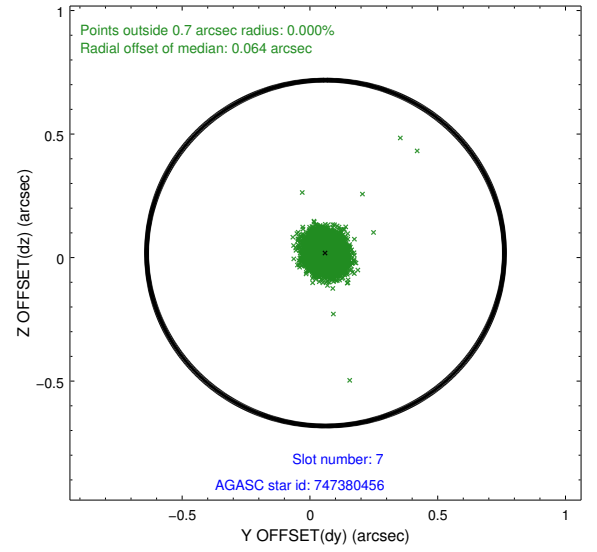
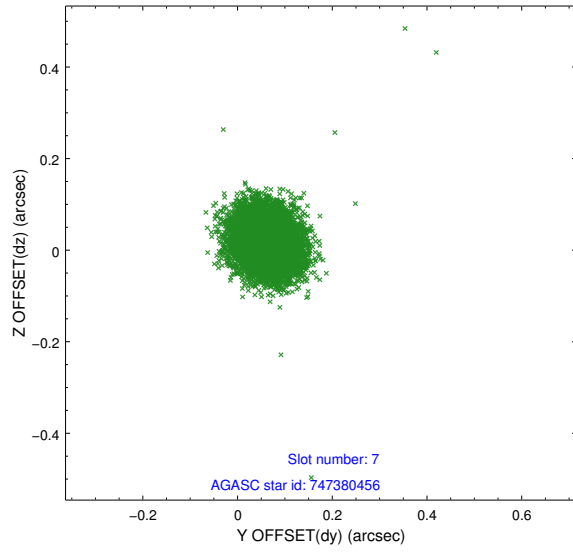
### 2.4.3 Slot 5



## 2.4.4 Slot 6

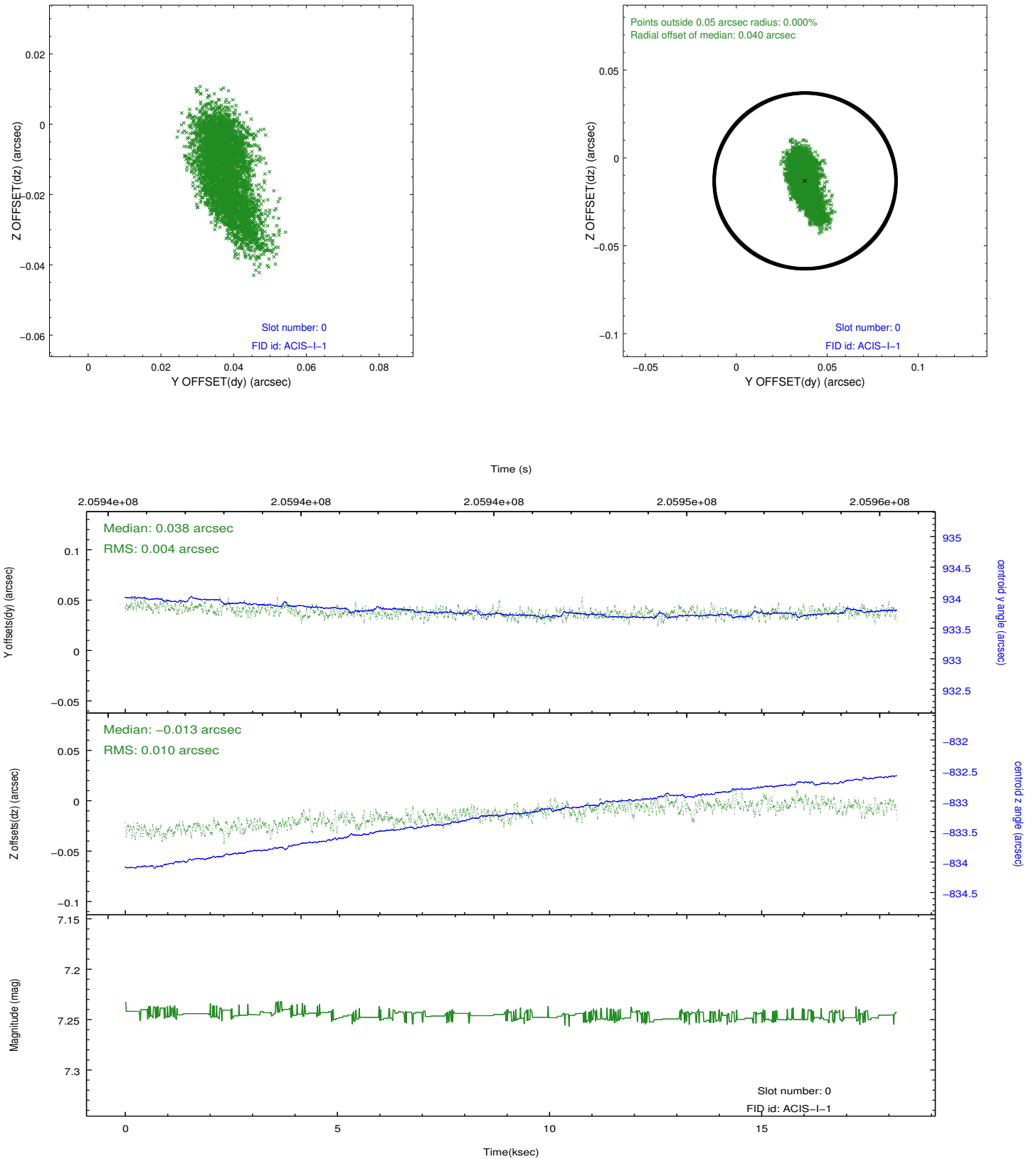


## 2.4.5 Slot 7

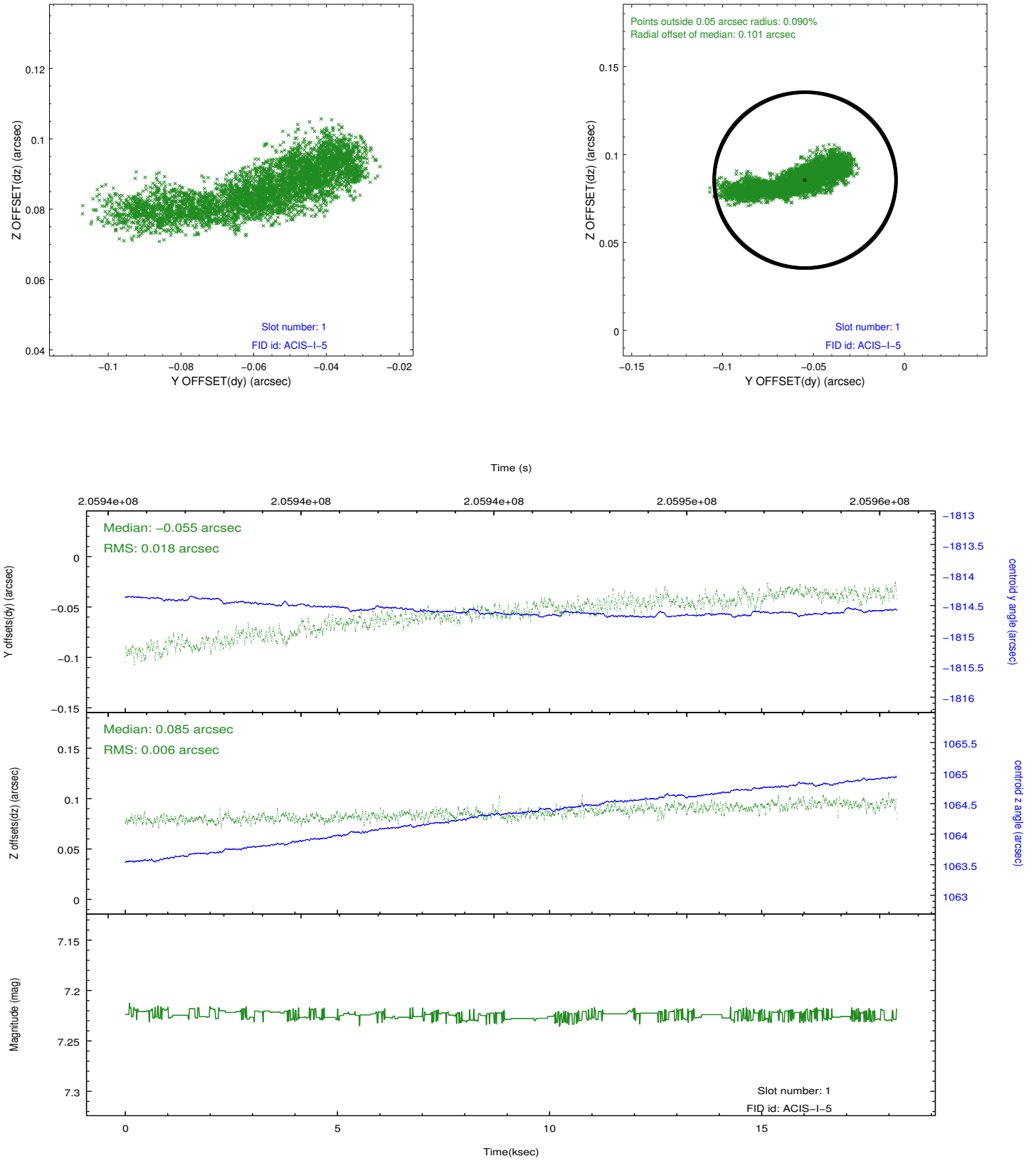


## 2.5 FID Slots

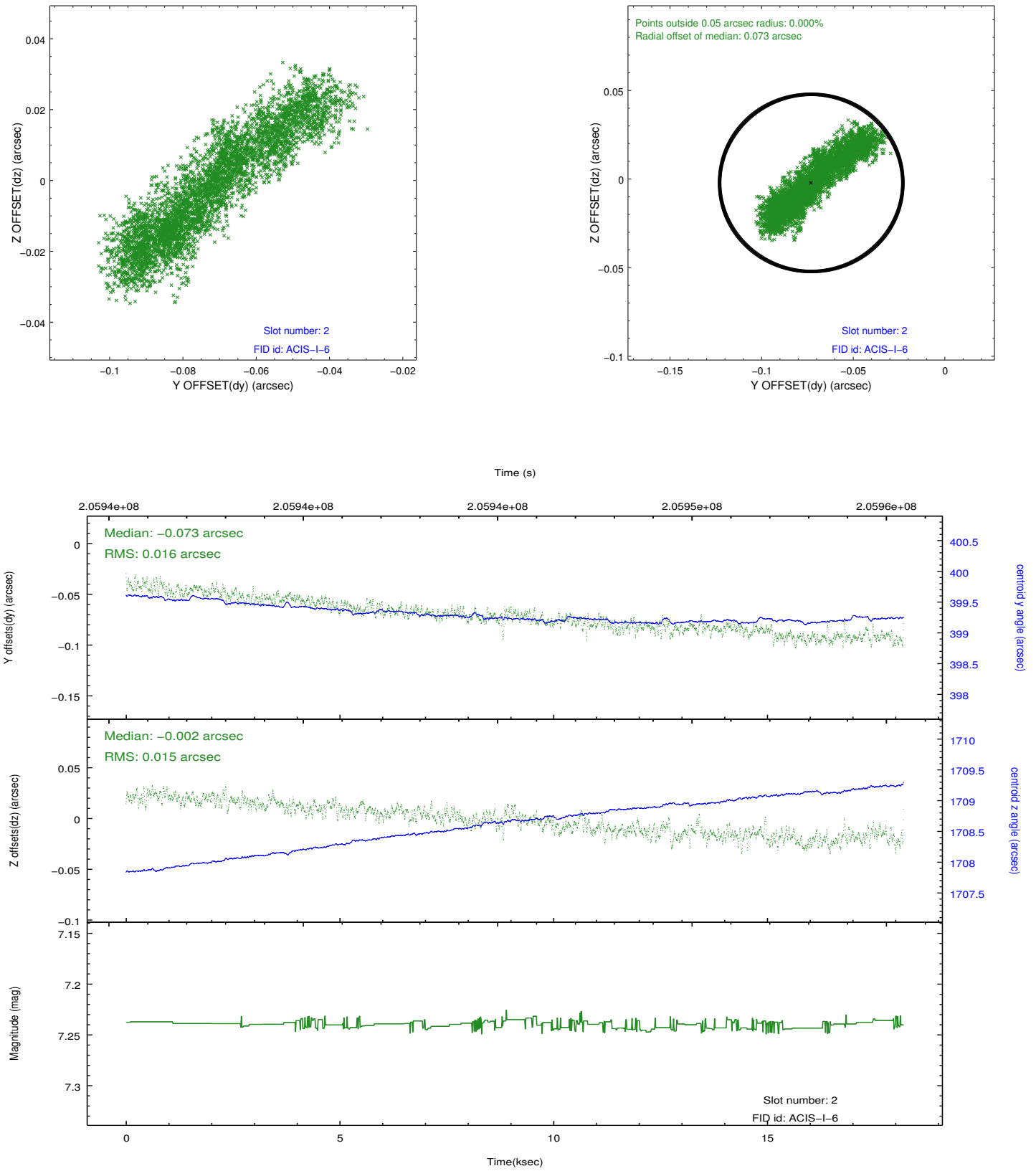
### 2.5.1 Slot 0



## 2.5.2 Slot 1



### 2.5.3 Slot 2



## A Summary

### A.1 Status

V&V Scientist	Beth Sundheim
V&V Date (YYYY-MM-DD)	2012.12.17
V&V Edition	1
V&V Disposition and Status	OK
V&V Charge Time	18.185

### A.2 Comments

Roll preference met.