

# V&V Reference Report

## L2 ASCDS Version : 10.2.2

Observation 52721 - L2 Version 1  
Chandra X-Ray Center

L2 Processing Date : Jun 8 2014

## Contents

<b>1</b>	<b>Front</b>	<b>2</b>
<b>2</b>	<b>OBI</b>	<b>3</b>
2.1	OBI . . . . .	3
2.1.1	Images . . . . .	3
2.1.2	Bias . . . . .	3
2.1.3	Parameters . . . . .	4
2.1.4	Events . . . . .	4
2.2	Compared Parameters . . . . .	5
2.3	Star Slots . . . . .	6
2.4	FID Slots . . . . .	6
<b>A</b>	<b>Summary</b>	<b>7</b>
A.1	Status . . . . .	7
A.2	Comments . . . . .	7

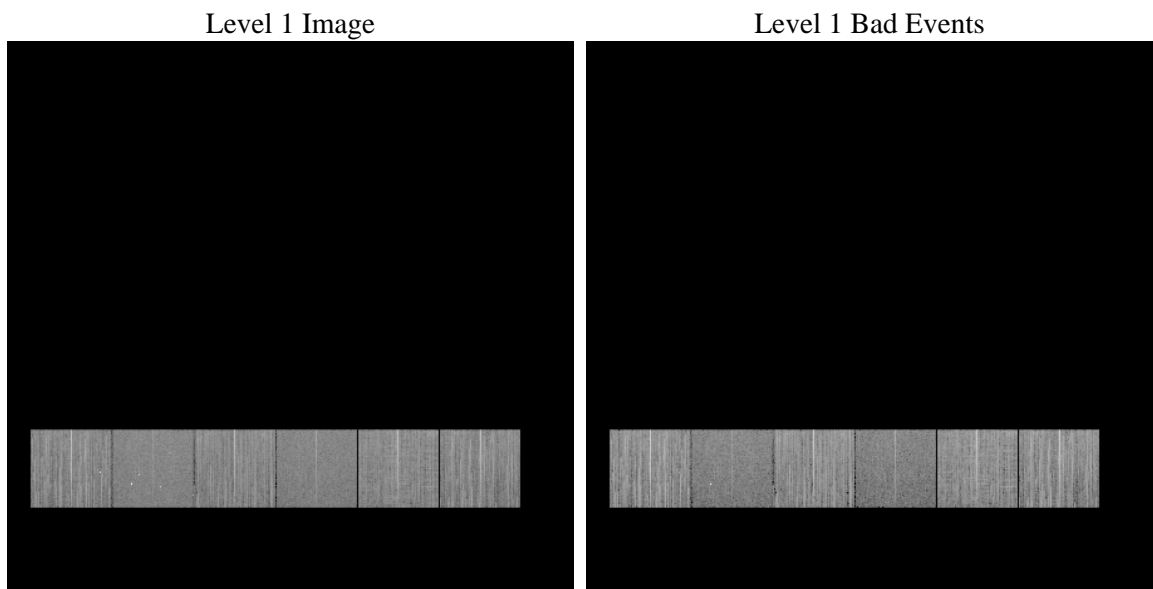
# 1 Front

seq_num	&#160	Sequence number
obs_id	52721	Observation id
title	ACIS-456789 diagnostics	Proposal title
observer	CHANDRA engineering request/realtime commanding	Principal investig
object	&#160	Source name
dtcycle	0	&#160
cycle	P	events from which exps? Prim/Second/Both
ra_targ	0.0	Observer's specified target RA [deg]
dec_targ	0.0	Observer's specified target Dec [deg]
ra_nom	295.99511245365	Nominal RA [deg]
dec_nom	-8.4741514290163	Nominal Dec [deg]
roll_nom	116.12774749263	Nominal Roll [deg]
revision	1	Processing version of data
ontime	8073.5999699831	Sum of GTIs [s]
livetime	7971.3671858249	Livetime [s]
ontime4	8073.5999699831	Sum of GTIs [s]
ontime5	8073.5999699831	Sum of GTIs [s]
ontime6	8073.5999699831	Sum of GTIs [s]
ontime7	8073.5999699831	Sum of GTIs [s]
ontime8	8073.5999699831	Sum of GTIs [s]
ontime9	8073.5999699831	Sum of GTIs [s]
l2events	196622	Number of level 2 events

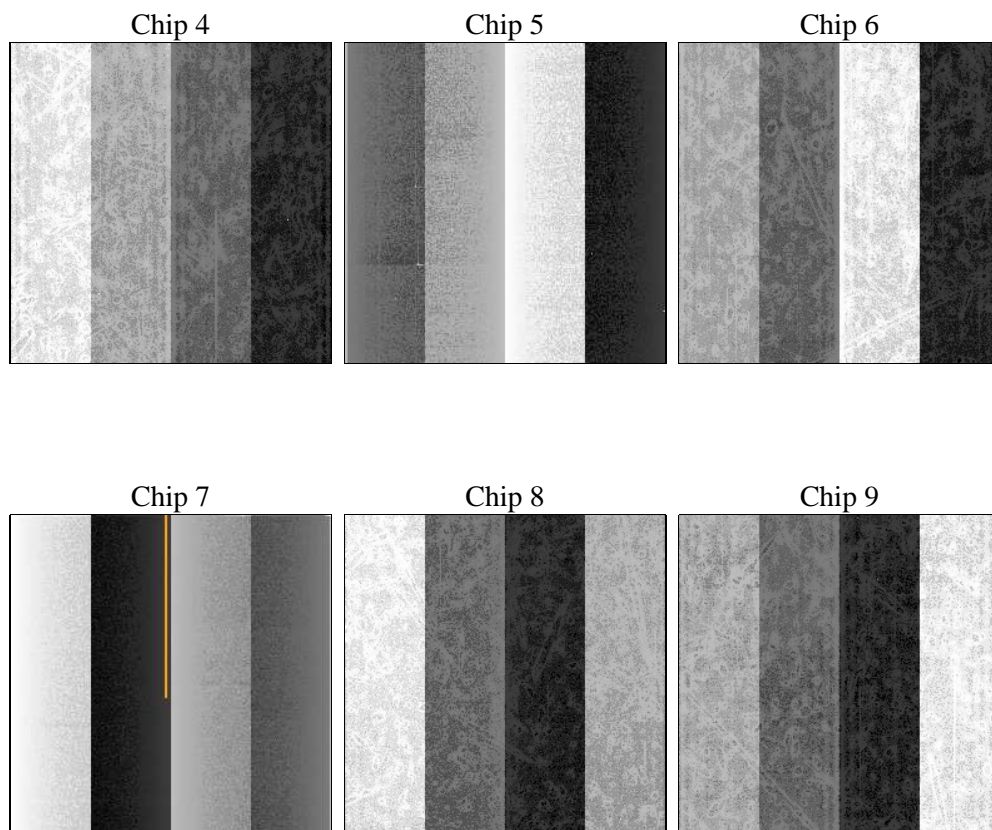
## 2 OBI

### 2.1 OBI

#### 2.1.1 Images



#### 2.1.2 Bias



### 2.1.3 Parameters

obi_num	0	Obi number	sched_exp_time	0.0	[s] Scheduled observation exposure time
ascdsver	10.2.2	Processing system revision	ontime	8073.5999699831	Sum of GTIs [s]
caldsver	4.6.1	&#160	ontime4	8073.5999699831	Sum of GTIs [s]
date	2014-06-09T01:21:55	Date and time of file creation	ontime5	8073.5999699831	Sum of GTIs [s]
revision	1	Processing version of data	ontime6	8073.5999699831	Sum of GTIs [s]
			ontime7	8073.5999699831	Sum of GTIs [s]
			ontime8	8073.5999699831	Sum of GTIs [s]
			ontime9	8073.5999699831	Sum of GTIs [s]
			l1events	835894	Number of level 1 events

### 2.1.4 Events

	ccd 4	ccd 5	ccd 6	ccd 7	ccd 8	ccd 9		ccd 4	ccd 5	ccd 6	ccd 7	ccd 8	ccd 9
level 1 events	150137	126712	144002	115846	153157	146040	grade 0 events	15262	6041	13282	7331	15924	13315
rejected events	122986	72336	117520	65691	117968	119873		10%	4%	9%	6%	10%	9%
rejected %	81%	57%	81%	56%	77%	82%	grade 1 events	110	125	77	84	85	77
								0%	0%	0%	0%	0%	0%
							grade 2 events	5192	20699	5547	12657	7619	5265
								3%	16%	3%	10%	4%	3%
							grade 3 events	1954	2061	1864	4245	2717	1957
								1%	1%	1%	3%	1%	1%
							grade 4 events	1871	1961	1786	4221	2692	1834
								1%	1%	1%	3%	1%	1%
							grade 5 events	2991	6054	3091	7232	3917	3435
								1%	4%	2%	6%	2%	2%
							grade 6 events	3610	25026	4677	23068	7171	4479
								2%	19%	3%	19%	4%	3%
							grade 7 events	119147	64745	113678	57008	113032	115678
								79%	51%	78%	49%	73%	79%

## 2.2 Compared Parameters

Parameter	Planned	Actual
Instrument	ACIS	ACIS
Detector	ACIS-456789	ACIS-456789
Grating	NONE	NONE
Data mode	FAINT	FAINT
Observation mode	SECONDARY	SECONDARY
[deg] Pointing RA	0	295.995112453646
[deg] Pointing Dec	0	-8.474151429016278
[deg] Pointing Roll	0.0	116.1277474926315
SIM focus pos (mm)	-1.4281808131	-1.4281808131
[mm] SIM defocus	0.1051557500557434	0.1051557500557434
SIM translation stage pos (mm)	250.4660330802	250.4660330802
[mm] SIM translation stage offset	-0.01005726120527584	-0.01005726120527584
[s] Observation start time (MET)	518633153.249662	518633153.249662
Observation start date	2014-06-08T16:45:53	2014-06-08T16:45:53
[s] Observation end time (MET)	518643213.857799	518643213.857799
Observation end date	2014-06-08T19:33:34	2014-06-08T19:33:33
Read mode	TIMED	TIMED

Parameter	Planned	Actual
Obspar format version number	7	7
Obspar file type	PREDICTED	ACTUAL
Obspar update status	OVERRIDE	OVERRIDE
Number of optional ACIS chips dropped	0	0
On-chip summing requested	N	N
Subarray requested	NONE	NONE
Alternating exposures requested	N	N
[s] Primary exposure time	3.2	3.2

## **2.3 Star Slots**

## **2.4 FID Slots**

## **A Summary**

### **A.1 Status**

V&V Scientist	Jen Lauer
V&V Date (YYYY-MM-DD)	2014.06.09
V&V Edition	1
V&V Disposition and Status	OK
V&V Charge Time	8.0735999699831

### **A.2 Comments**