

V&V Reference Report

L2 ASCDS Version : 7.6.7.2

Observation 5131 - L2 Version 001
Chandra X-Ray Center

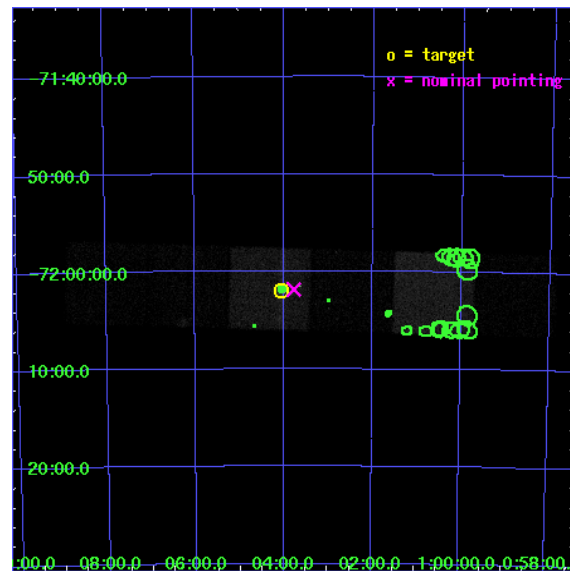
L2 Processing Date : May 27 2006

Contents

1	Front	2
2	OBI	3
2.1	OBI	3
2.1.1	Images	3
2.1.2	Bias	3
2.1.3	Parameters	4
2.1.4	Events	4
2.2	Compared Parameters	5
2.3	Aspect	6
2.4	Star Slots	9
2.4.1	Slot 3	9
2.4.2	Slot 4	10
2.4.3	Slot 5	11
2.4.4	Slot 6	12
2.4.5	Slot 7	13
2.5	FID Slots	14
2.5.1	Slot 0	14
2.5.2	Slot 1	15
2.5.3	Slot 2	16
3	Point Sources	17
A	Summary	18
A.1	Status	18
A.2	Comments	18

1 Front

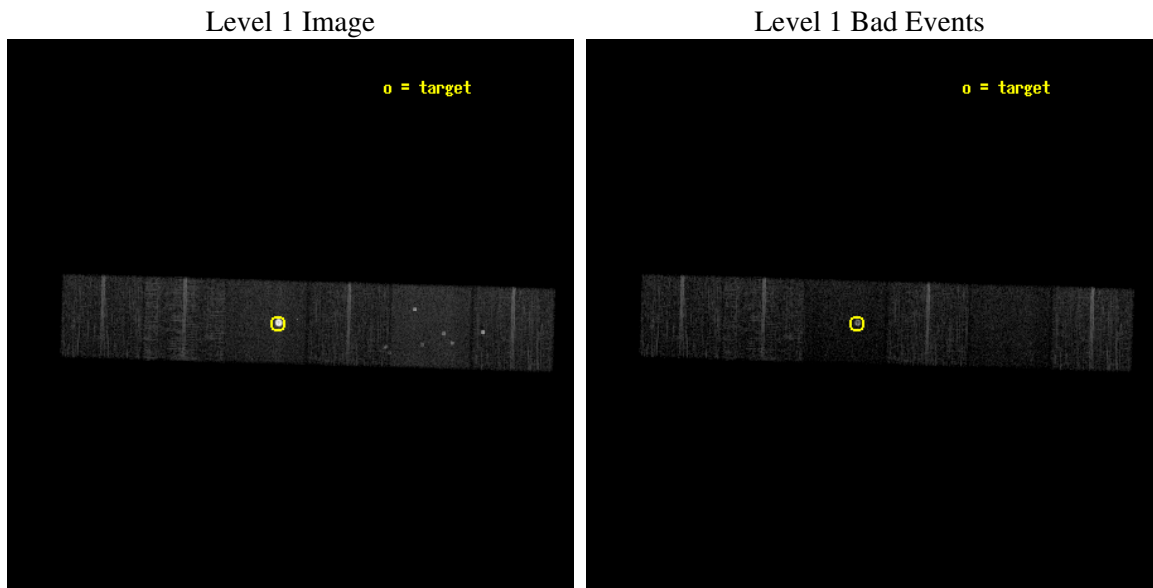
seq_num	590329
obs_id	5131
title	AO5B ACIS-S Calibration Observations of E0102-72
observer	Dr. CXC Calibration
object	E0102-72[S3,-120,-1,0,0]
dtcycle	0
cycle	P
ra_targ	16.01
dec_targ	-72.032028
ra_nom	15.942792367509
dec_nom	-72.030913028134
roll_nom	181.6552224045
revision	2
ontime	8115.1999697685
livetime	8012.4404213645
ontime4	8115.1999697685
ontime5	8115.1999697685
ontime6	8115.1999697685
ontime7	8115.1999697685
ontime8	8115.1999697685
ontime9	8111.9589994848
l2events	115672



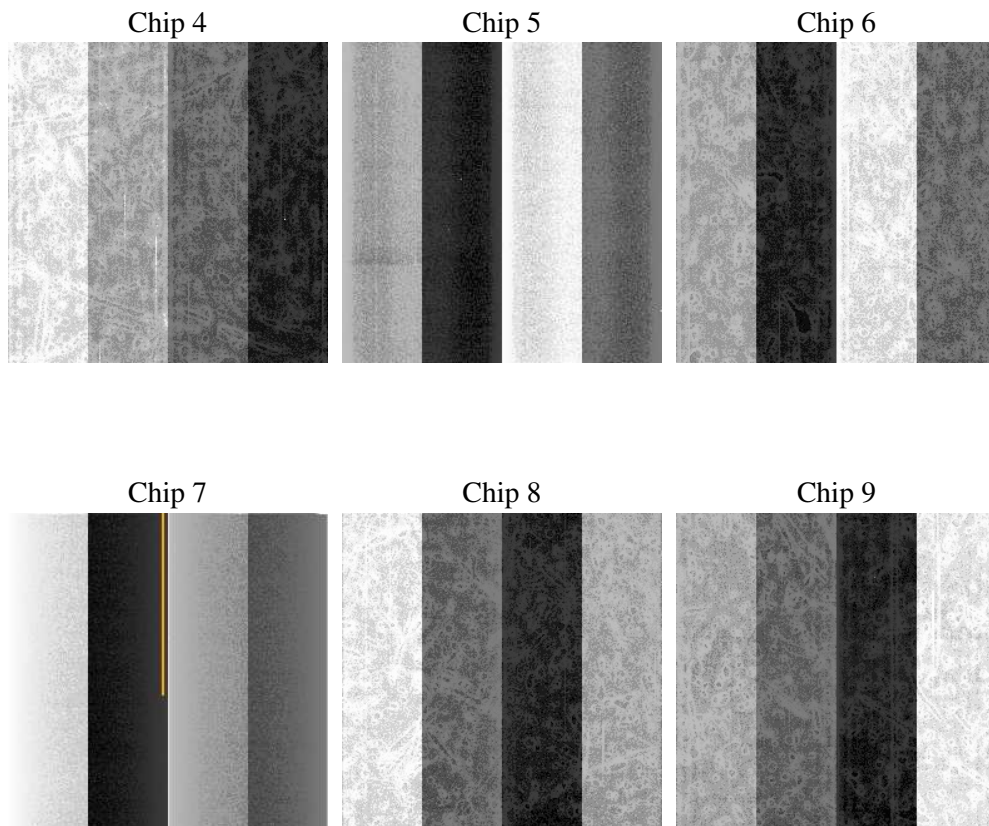
2 OBI

2.1 OBI

2.1.1 Images



2.1.2 Bias



2.1.3 Parameters

obi_num	0
ascdsver	7.6.7.2
caldbver	3.2.2
date	2006-05-27T11:05:28
revision	2

sched_exp_time	8000.000000
ontime	8747.4623348415
ontime4	8747.4623348415
ontime5	8747.4623348415
ontime6	8747.4623348415
ontime7	8747.4623348415
ontime8	8747.4623348415
ontime9	8744.2213645577
l1events	367020

2.1.4 Events

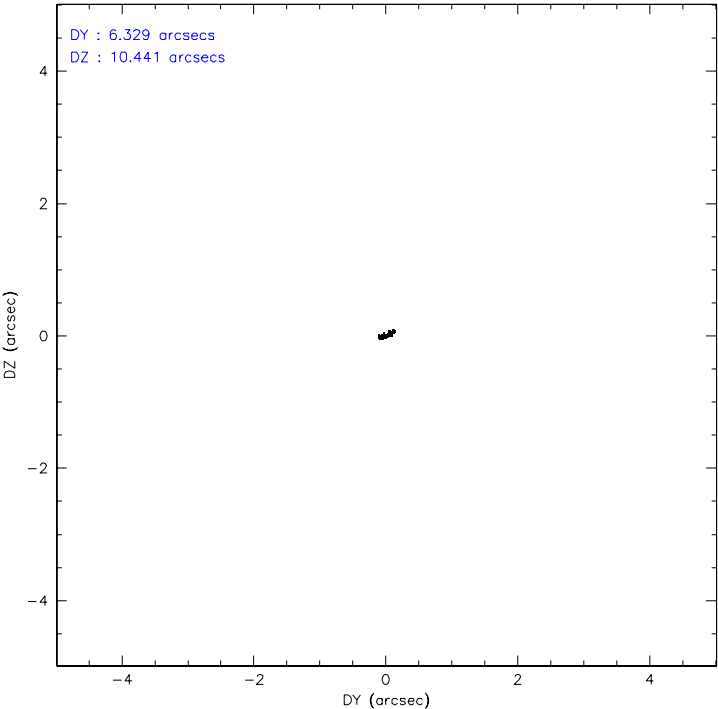
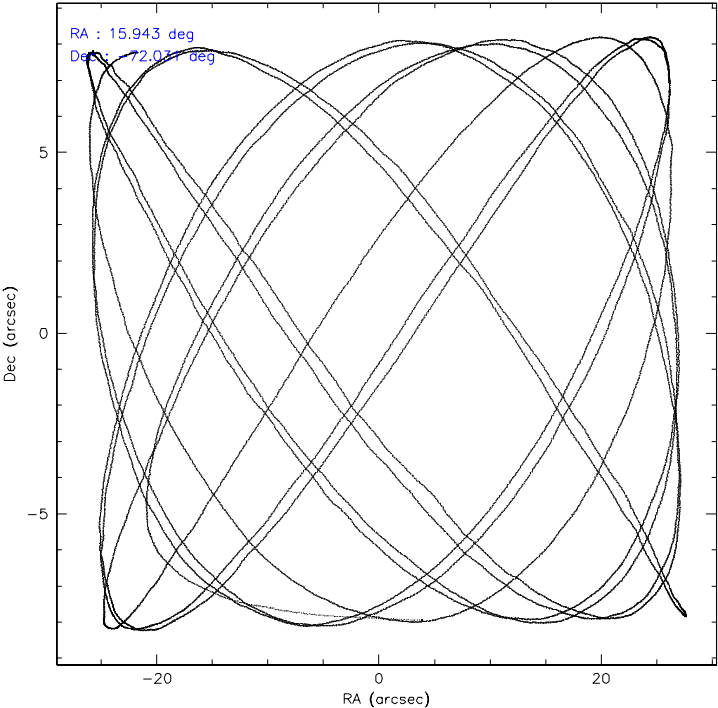
	ccd 4	ccd 5	ccd 6	ccd 7	ccd 8	ccd 9
level 1 events	56205	57829	47199	103586	57690	44511
rejected events	49377	29249	42129	28045	45501	40198
rejected %	87%	50%	89%	27%	78%	90%

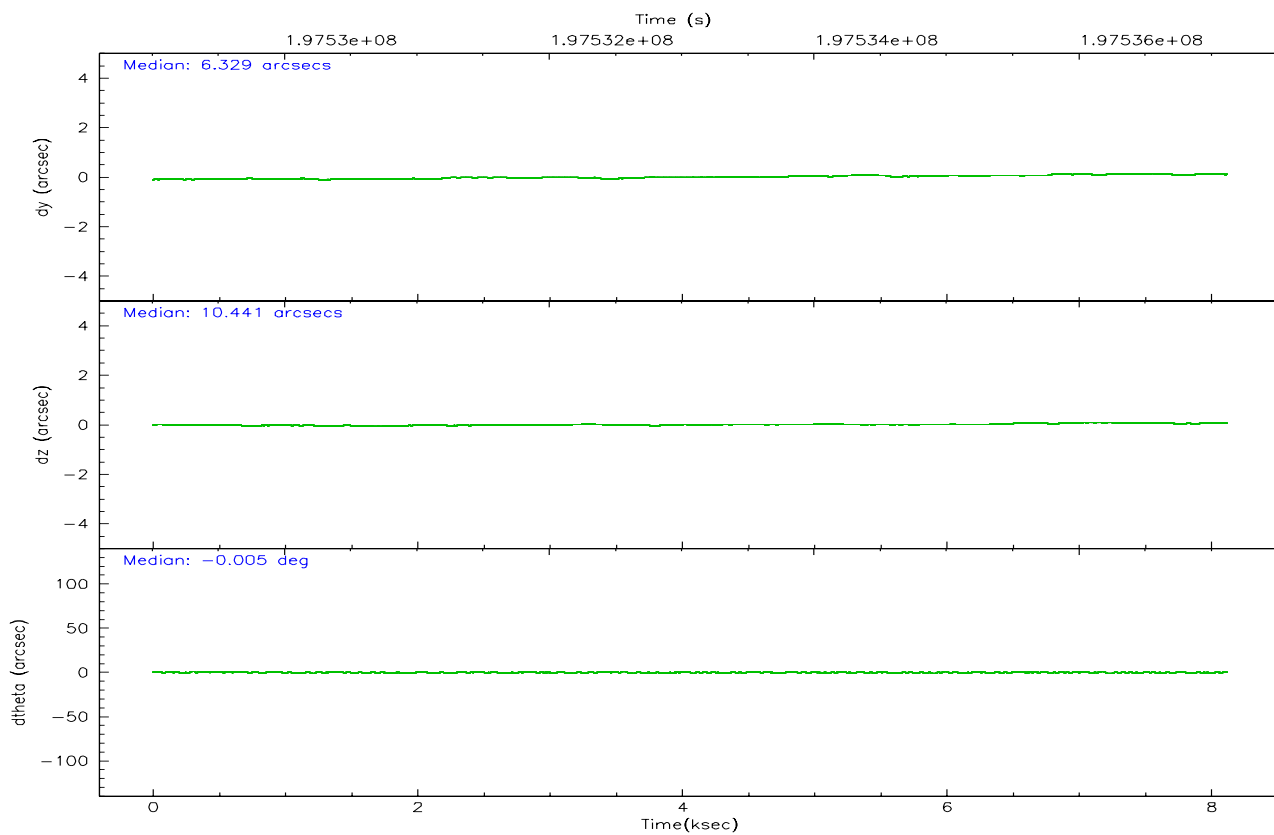
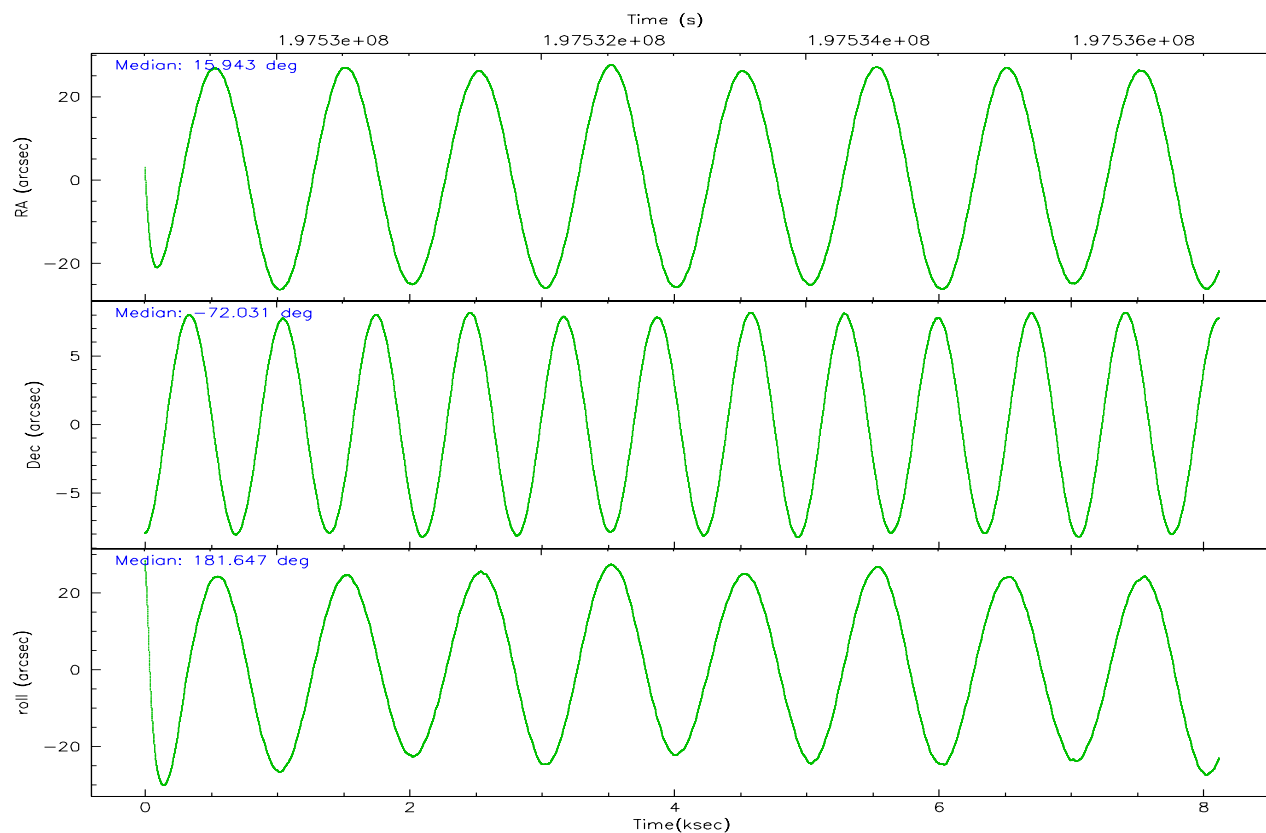
	ccd 4	ccd 5	ccd 6	ccd 7	ccd 8	ccd 9
grade 0 events	4410	4877	2292	22182	3659	1734
	7%	8%	4%	21%	6%	3%
grade 1 events	44	92	28	417	41	22
	0%	0%	0%	0%	0%	0%
grade 2 events	1162	8959	1109	21146	3103	947
	2%	15%	2%	20%	5%	2%
grade 3 events	529	884	533	8287	1381	542
	0%	1%	1%	8%	2%	1%
grade 4 events	487	807	546	7949	1250	530
	0%	1%	1%	7%	2%	1%
grade 5 events	1553	3109	1583	4404	2303	1704
	2%	5%	3%	4%	3%	3%
grade 6 events	746	15351	910	18959	3908	956
	1%	26%	1%	18%	6%	2%
grade 7 events	47274	23750	40198	20242	42045	38076
	84%	41%	85%	19%	72%	85%

2.2 Compared Parameters

Parameter	Planned	Actual	Parameter	Planned	Actual
Instrument	ACIS	ACIS	Obspar format version number	6	6
Detector	ACIS-456789	ACIS-456789	Obspar file type	PREDICTED	ACTUAL
Grating	NONE	NONE	Obspar update status	NONE	UPDATED
Data mode	VFAINT	VFAINT	On-chip summing requested	N	N
Observation mode	POINTING	POINTING	Subarray requested	NONE	NONE
Pointing RA	16.017243	15.9427923675088	Alternating exposures requested	N	N
Pointing Dec	-72.016304	-72.03091302813364	Primary exposure time	0.000000	3.2
Pointing Roll	181.569356	181.6552224045041			
Window start time	197164864.184000	197164864.184000			
Window stop time	199670464.184000	199670464.184000			
SIM focus pos (mm)	-0.684267	-0.6828225247311905			
SIM defocus (mm)	0	0.001444936568705701			
SIM translation stage pos (mm)	-190.132523	-190.1400660498719			
SIM translation stage offset (mm)	0	0.00754346686406393			
Observation start time	197529125.184000	197527772.37032			
Observation start date	2004-04-05T05:11:01	2004-04-05T04:49:32			
Observation end time	197537125.184000	197537596.99576			
Observation end date	2004-04-05T07:24:21	2004-04-05T07:33:16			
Read mode	TIMED	TIMED			

2.3 Aspect



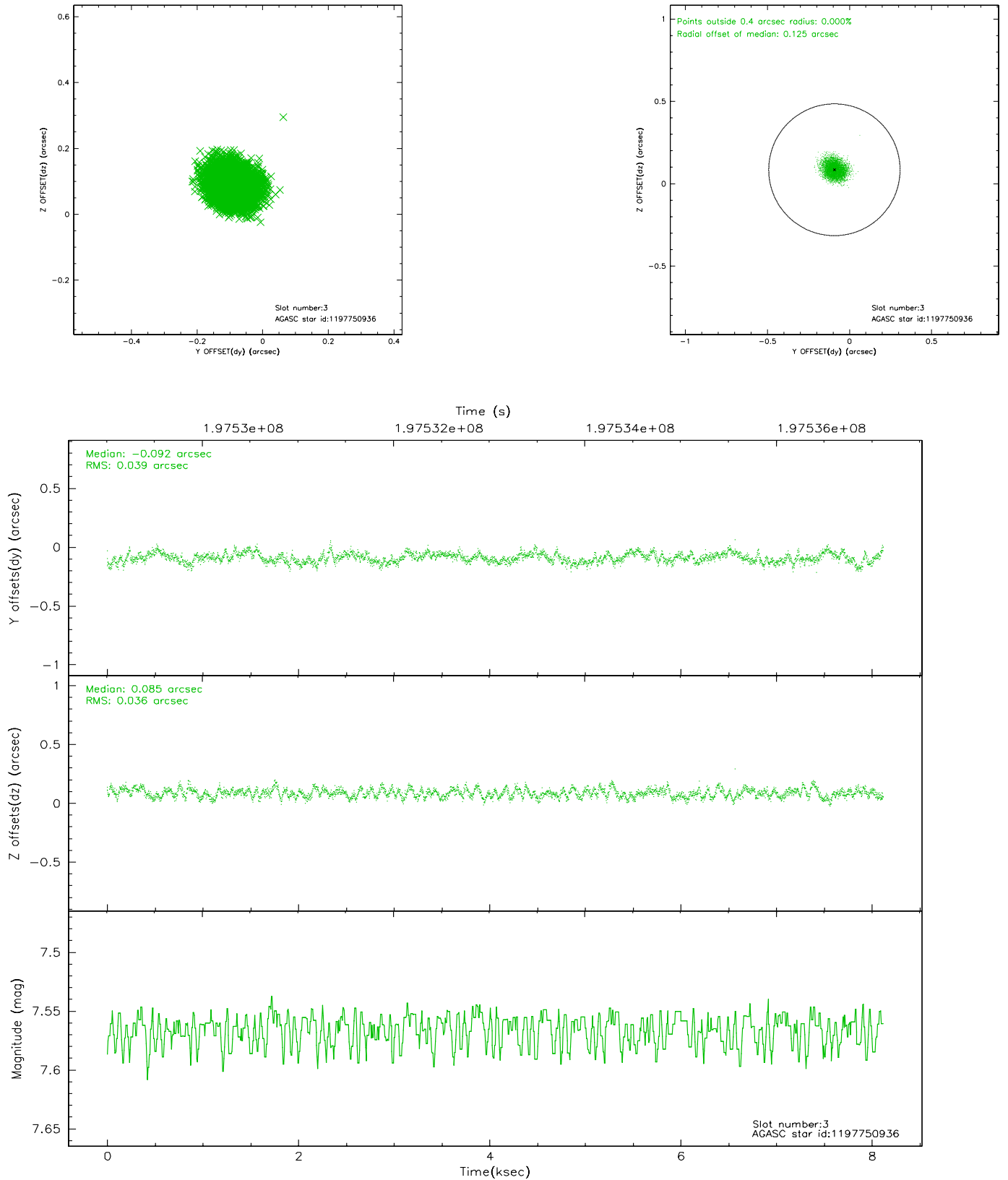


Slot Statistics

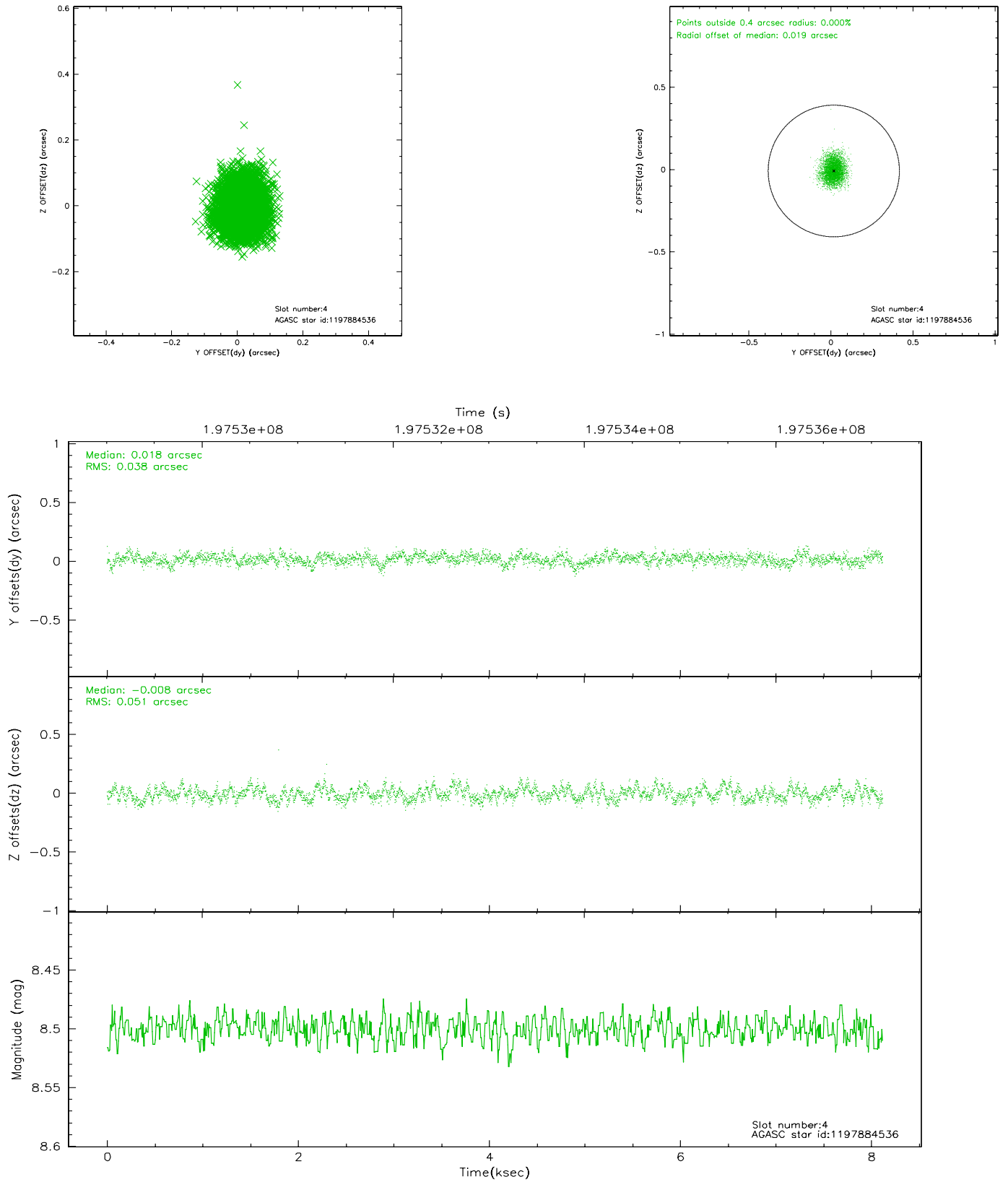
slot	status	id	mag	n_pts	med_dy	med_dz	dr1	dr2	ra	dec	mean_y	mean_z
0	FID	ACIS-S-2	7.10	1981	-0.050	0.006	0.006	0.010	0.000000	0.000000	-759.08	-1731.72
1	FID	ACIS-S-4	7.21	1981	0.041	0.023	0.005	0.010	0.000000	0.000000	2153.93	176.12
2	FID	ACIS-S-5	7.23	1981	-0.022	-0.019	0.006	0.010	0.000000	0.000000	-1811.05	170.46
3	GUIDE	1197750936	7.56	3962	-0.092	0.085	0.058	0.090	15.387940	-71.549550	671.14	-1694.86
4	GUIDE	1197884536	8.50	3959	0.018	-0.008	0.067	0.108	17.160729	-71.835289	-1299.81	-604.38
5	GUIDE	1197884712	8.31	3962	-0.022	-0.044	0.060	0.098	16.087398	-72.252690	-53.95	852.99
6	GUIDE	1197885104	9.35	3959	0.082	-0.053	0.088	0.141	17.845067	-72.189368	-1993.40	708.94
7	GUIDE	1197885328	7.24	3961	0.017	0.019	0.054	0.084	16.283090	-71.733943	-328.26	-1006.93

2.4 Star Slots

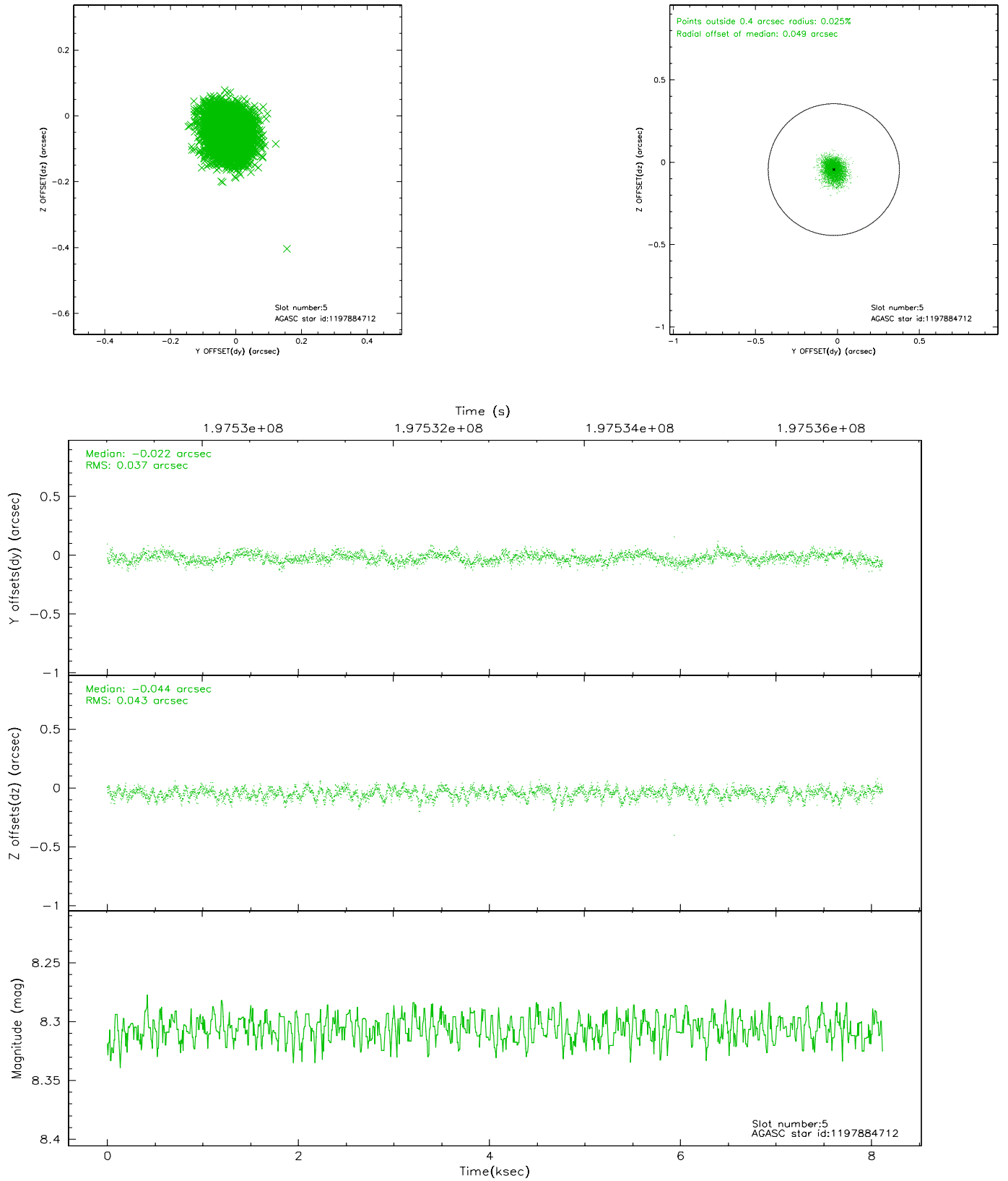
2.4.1 Slot 3



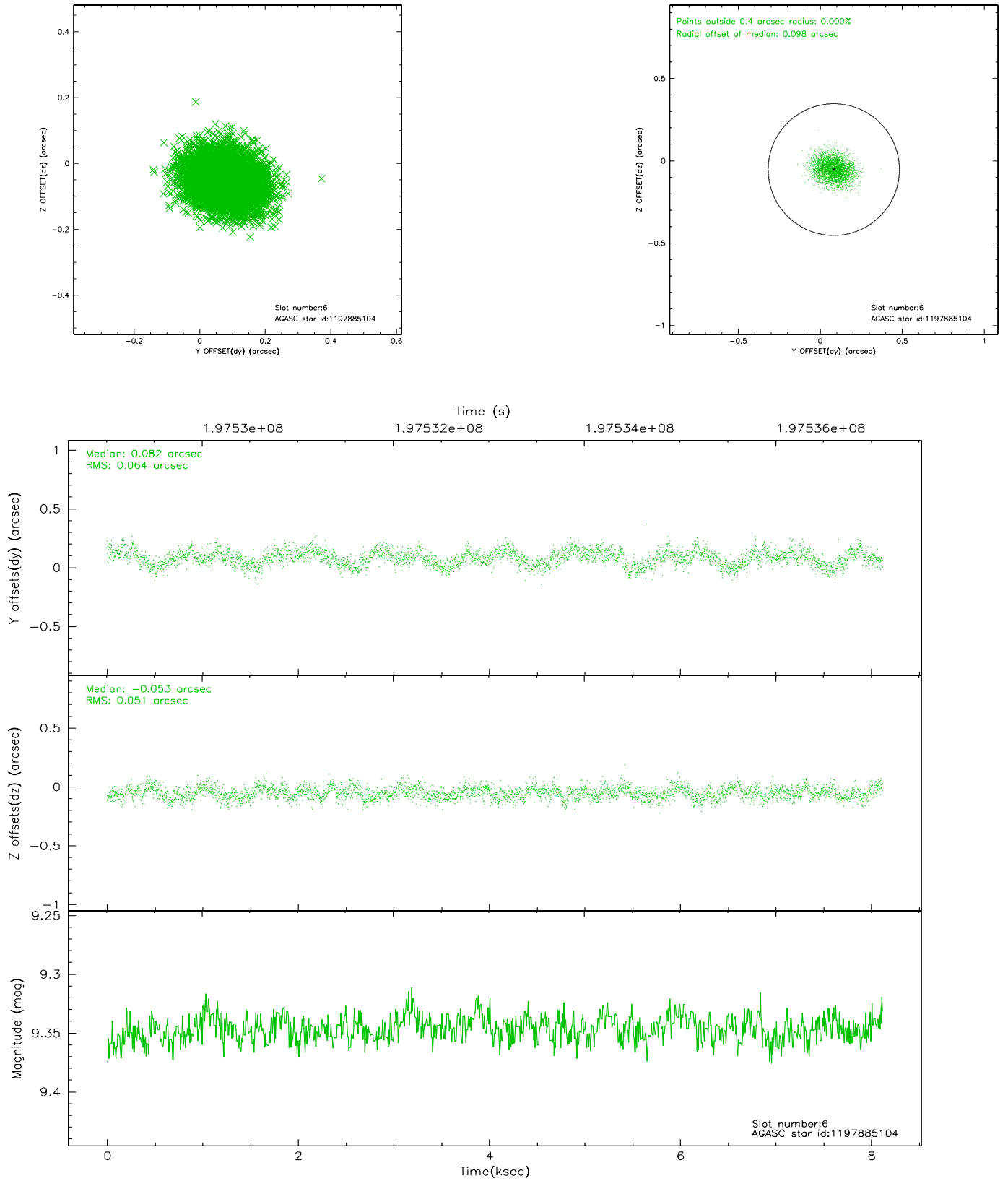
2.4.2 Slot 4



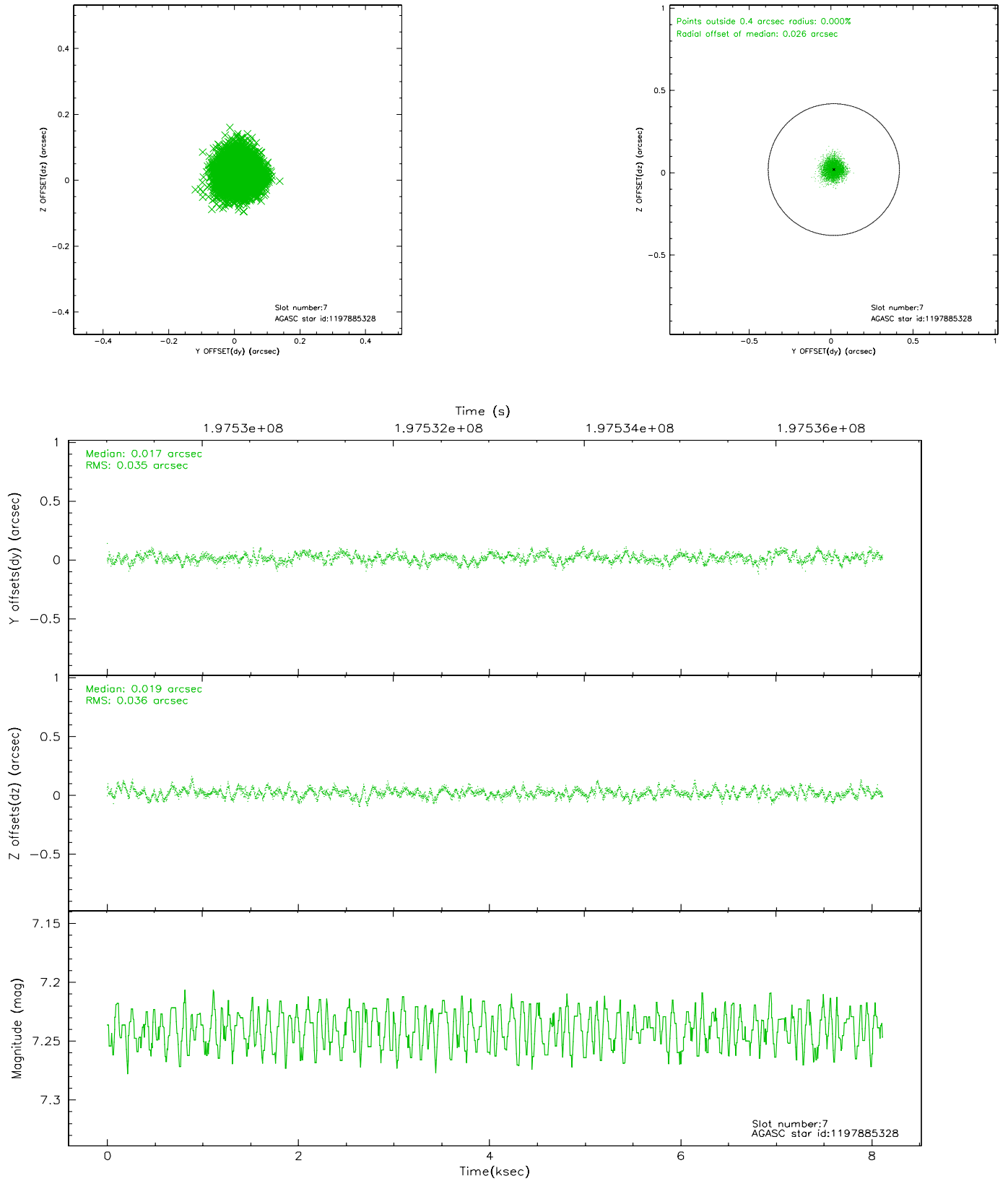
2.4.3 Slot 5



2.4.4 Slot 6

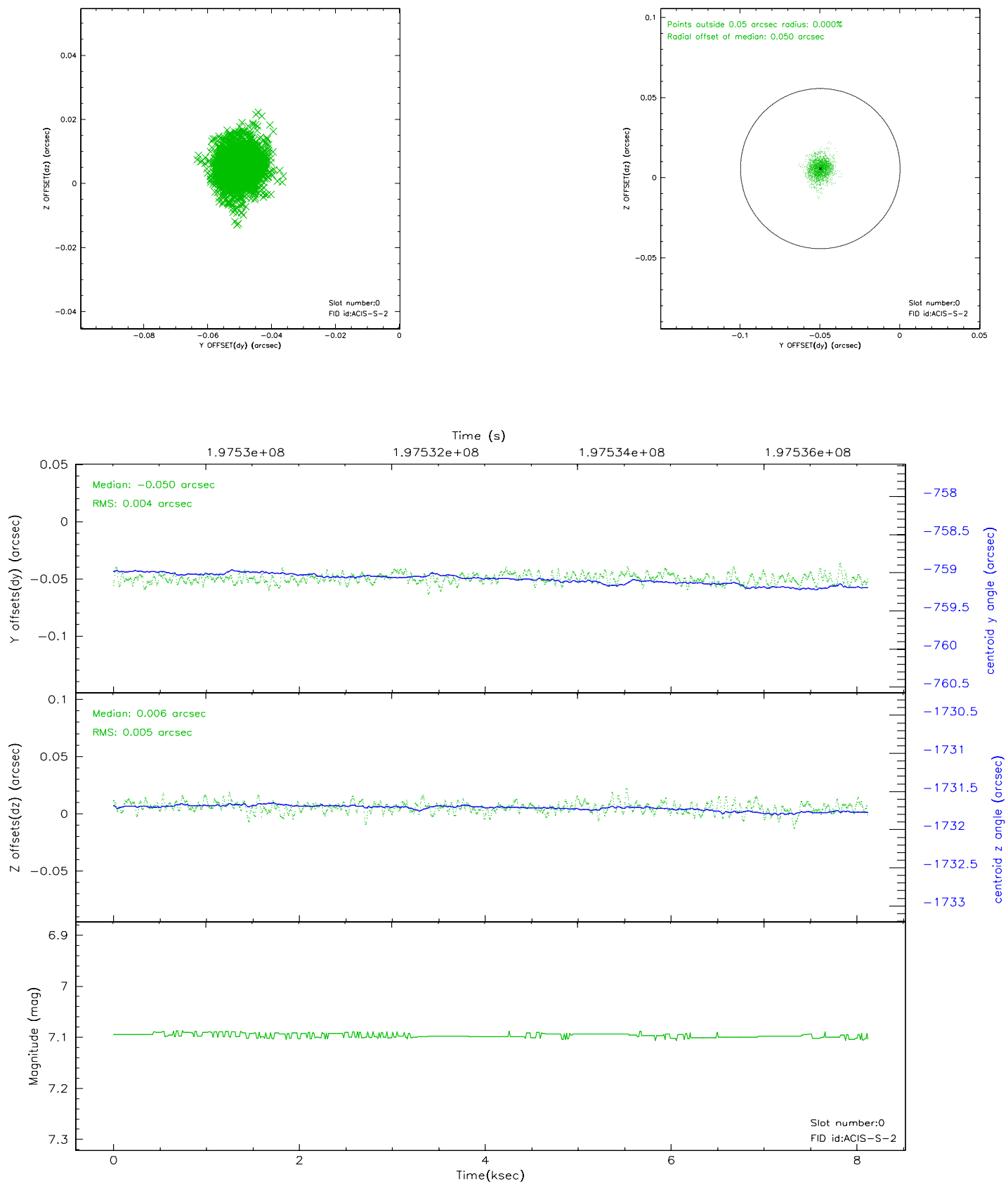


2.4.5 Slot 7

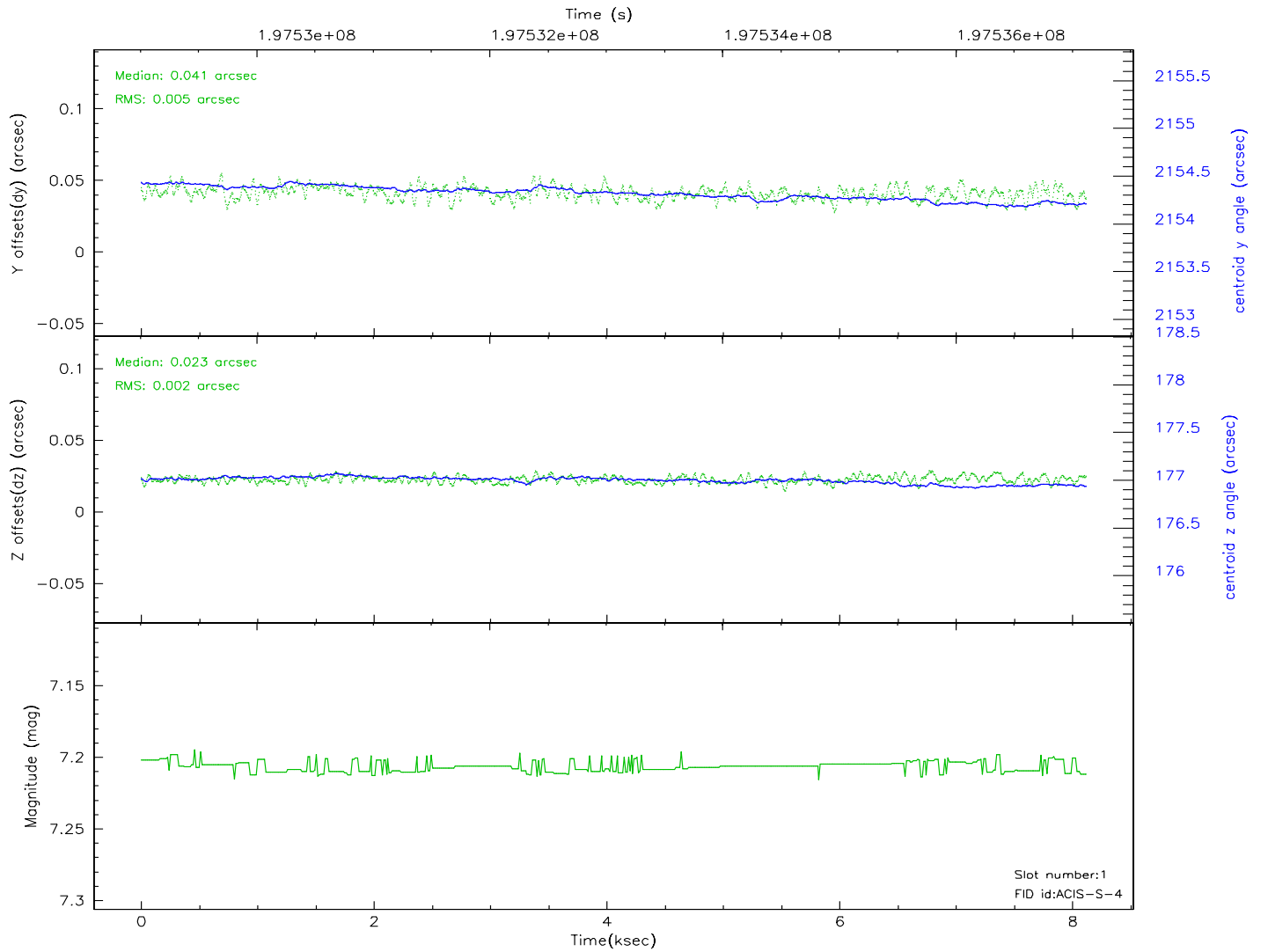
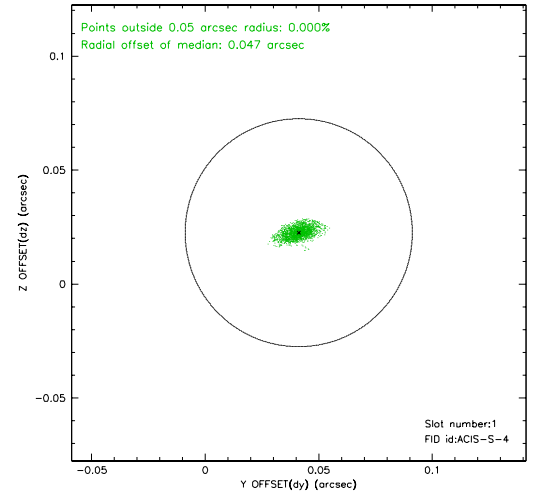
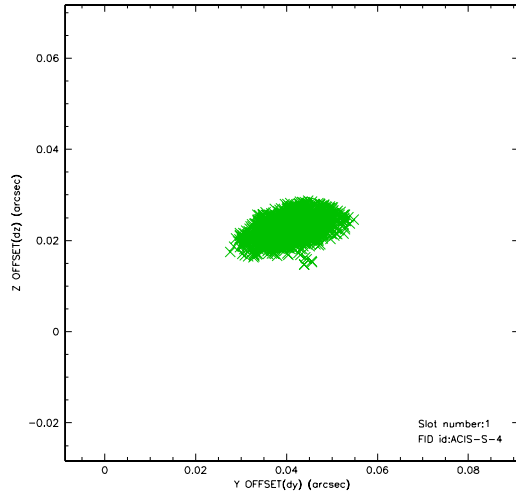


2.5 FID Slots

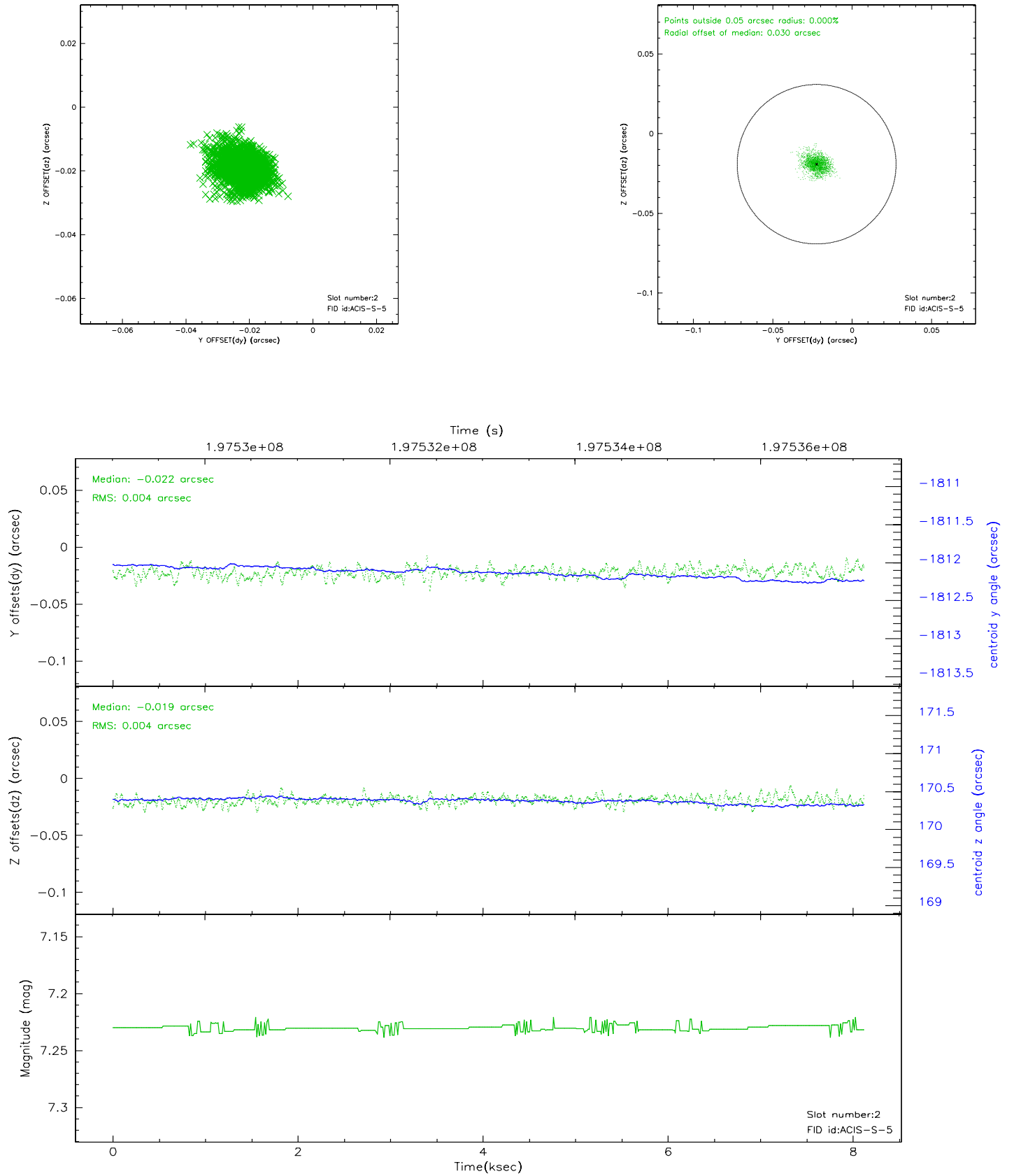
2.5.1 Slot 0



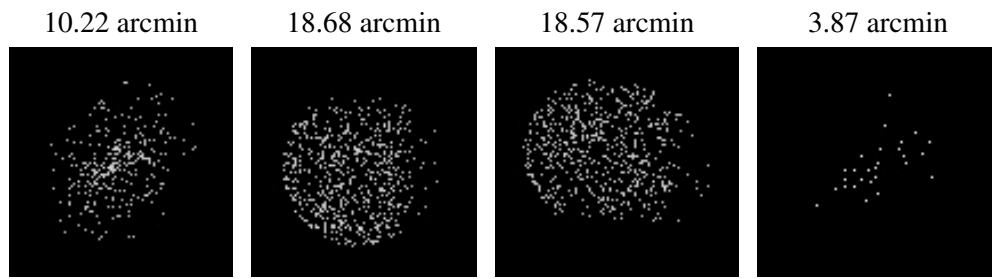
2.5.2 Slot 1



2.5.3 Slot 2



3 Point Sources



A Summary

A.1 Status

V&V Scientist	Beth Sundheim
V&V Date (YYYY-MM-DD)	2006.05.30
V&V Edition	1
V&V Disposition and Status	OK
V&V Charge Time	8.115

A.2 Comments

Window constraint satisfied.