

V&V Reference Report

L2 ASCDS Version : 8.4.5

Observation 4981 - L2 Version 3
Chandra X-Ray Center

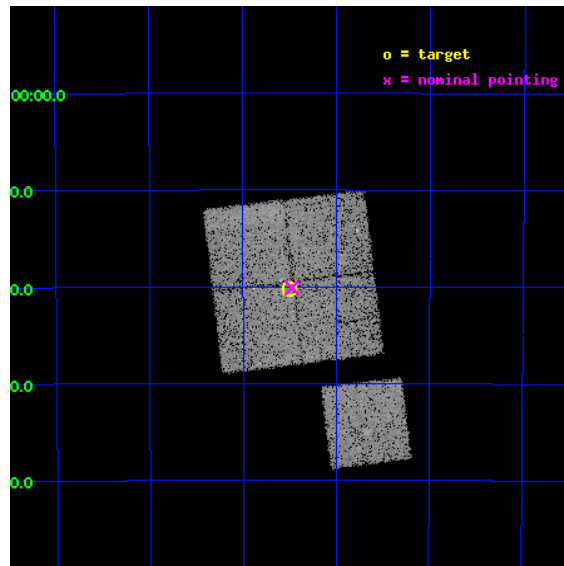
L2 Processing Date : Dec 3 2012

Contents

1	Front	2
2	OBI	3
2.1	OBI	3
2.1.1	Images	3
2.1.2	Bias	3
2.1.3	Parameters	4
2.1.4	Events	4
2.2	Compared Parameters	5
2.3	Aspect	6
2.4	Star Slots	9
2.4.1	Slot 3	9
2.4.2	Slot 4	10
2.4.3	Slot 5	11
2.4.4	Slot 6	12
2.4.5	Slot 7	13
2.5	FID Slots	14
2.5.1	Slot 0	14
2.5.2	Slot 1	15
2.5.3	Slot 2	16
A	Summary	17
A.1	Status	17
A.2	Comments	17

1 Front

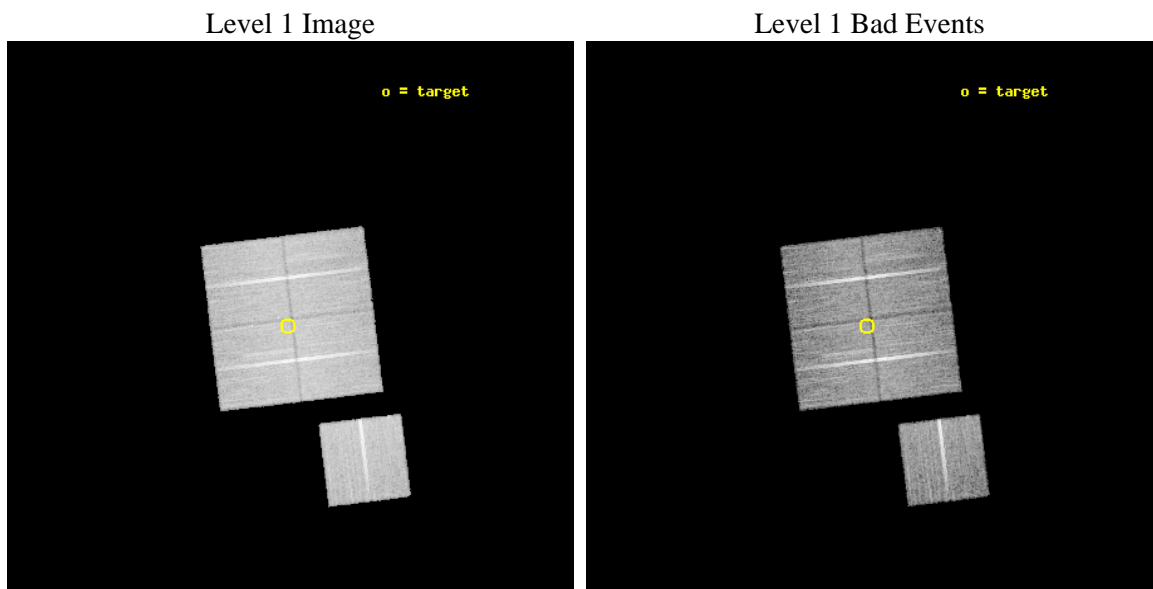
seq_num	800426	Sequence number
obs_id	4981	Observation id
title	Chandra Observations of DLS Shear-Selected Clusters	Proposal title
observer	Prof. John Hughes	Principal investigator
object	DLS J0514-4920	Source name
dtcycle	0	
cycle	P	events from which exps? Prim/Second/Both
ra_targ	78.625417	Observer's specified target RA [deg]
dec_targ	-49.337667	Observer's specified target Dec [deg]
ra_nom	78.619215272407	Nominal RA [deg]
dec_nom	-49.335358051319	Nominal Dec [deg]
roll_nom	173.11949911002	Nominal Roll [deg]
revision	3	Processing version of data
ontime	20165.499961197	Sum of GTIs [s]
livetime	19902.022858579	Livetime [s]
ontime0	20165.499961197	Sum of GTIs [s]
ontime1	20162.358990967	Sum of GTIs [s]
ontime2	20165.499961197	Sum of GTIs [s]
ontime3	20165.499961197	Sum of GTIs [s]
ontime6	20162.358990967	Sum of GTIs [s]
l2events	51681	Number of level 2 events



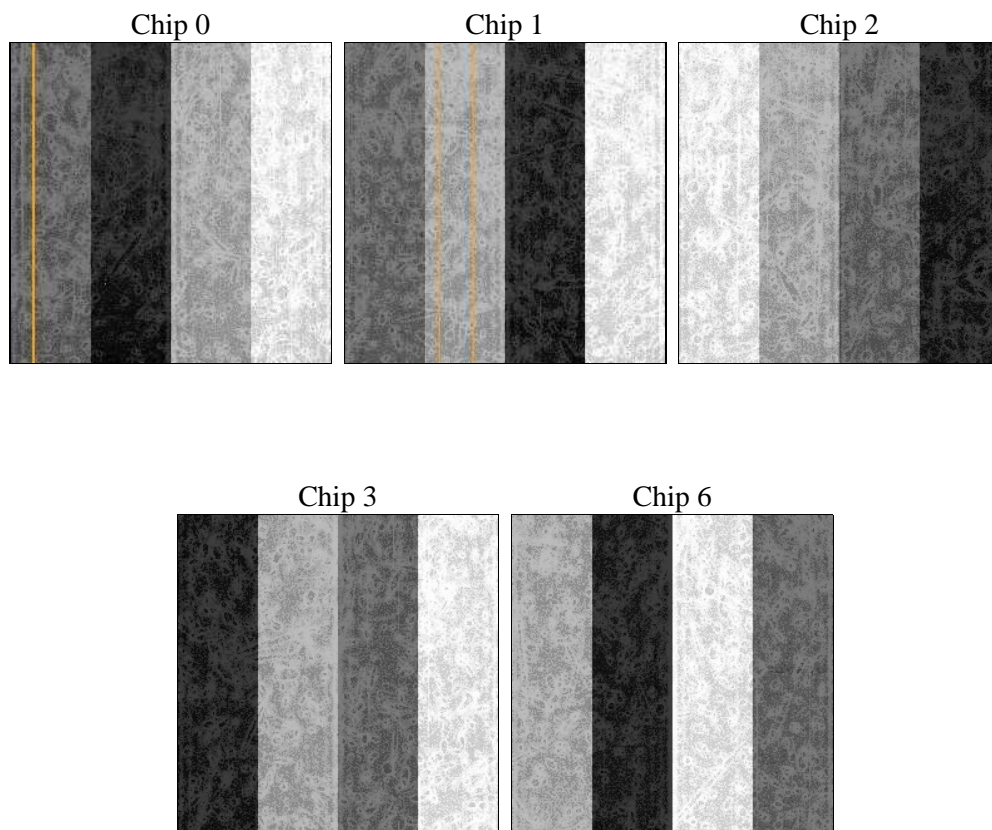
2 OBI

2.1 OBI

2.1.1 Images



2.1.2 Bias



2.1.3 Parameters

obi_num	0	Obi number	sched_exp_time	20000.000000	[s] Scheduled observation exposure time
ascdsver	8.4.5	Processing system revision	ontime	20165.499961197	Sum of GTIs [s]
caldsver	4.5.2	 	ontime0	20165.499961197	Sum of GTIs [s]
date	2012-12-03T05:08:04	Date and time of file creation	ontime1	20162.358990967	Sum of GTIs [s]
revision	3	Processing version of data	ontime2	20165.499961197	Sum of GTIs [s]
			ontime3	20165.499961197	Sum of GTIs [s]
			ontime6	20162.358990967	Sum of GTIs [s]
			l1events	620733	Number of level 1 events

2.1.4 Events

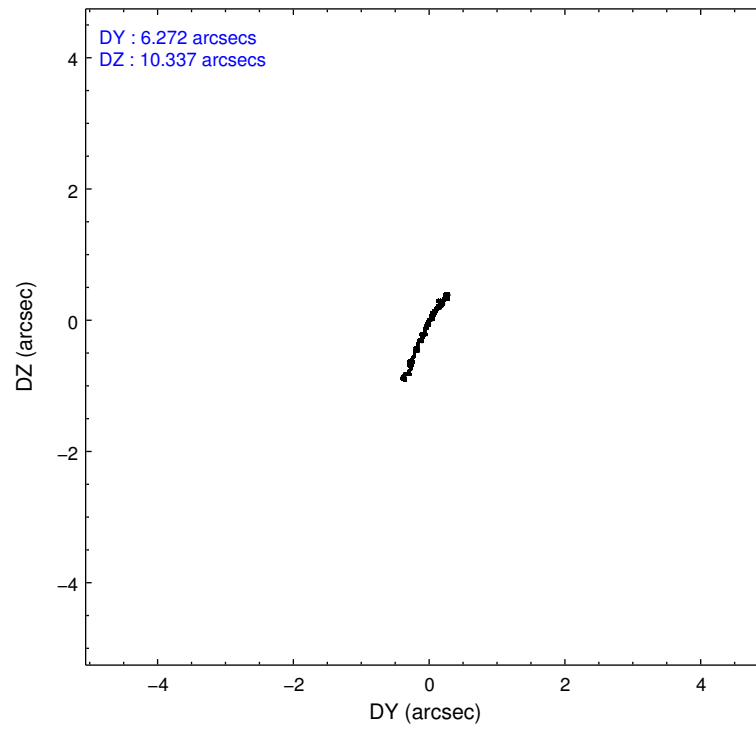
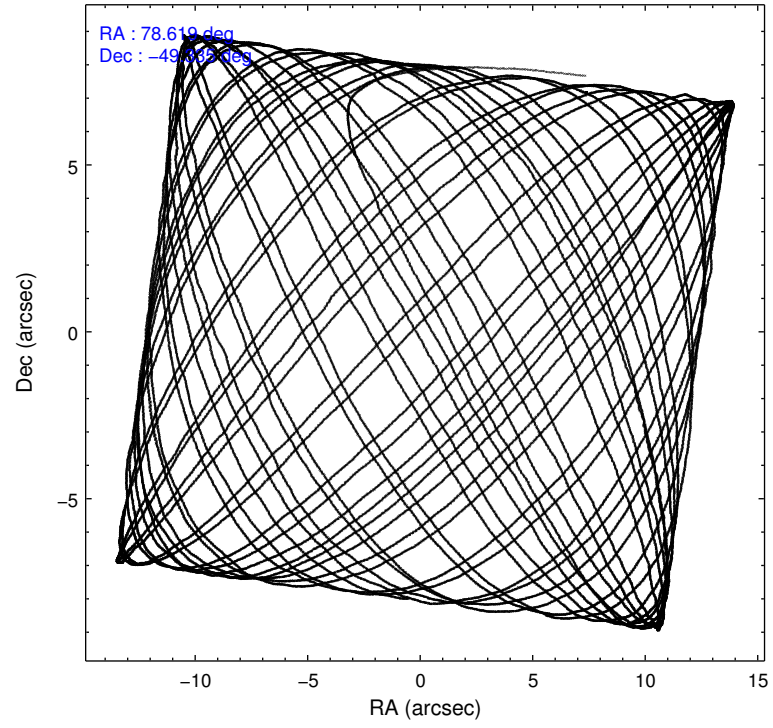
	ccd 0	ccd 1	ccd 2	ccd 3	ccd 6
level 1 events	116630	120663	130555	127755	125130
rejected events	104378	106743	118503	116086	112666
rejected %	89%	88%	90%	90%	90%

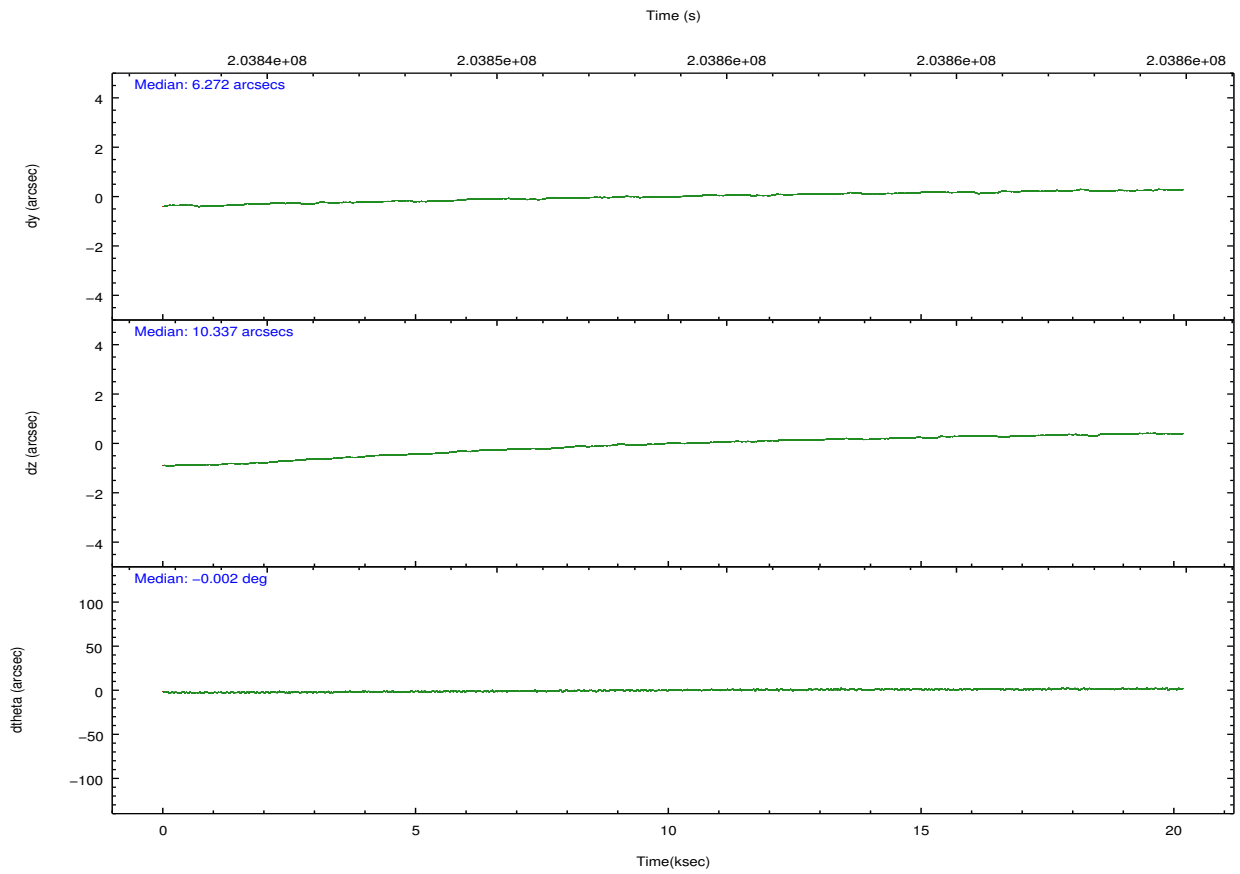
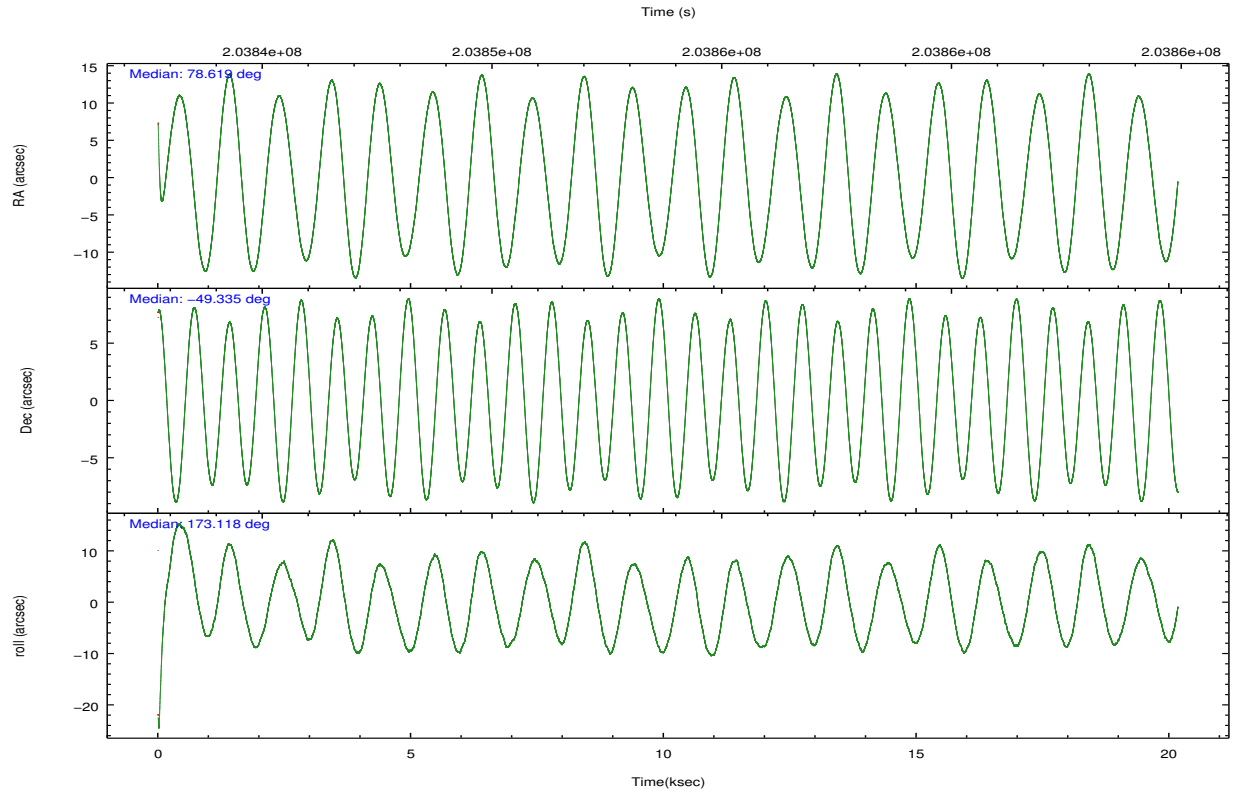
	ccd 0	ccd 1	ccd 2	ccd 3	ccd 6
grade 0 events	4263	5187	4339	4165	4287
	3%	4%	3%	3%	3%
grade 1 events	58	43	69	72	58
	0%	0%	0%	0%	0%
grade 2 events	2818	2872	2794	2494	2646
	2%	2%	2%	1%	2%
grade 3 events	1522	1605	1367	1388	1471
	1%	1%	1%	1%	1%
grade 4 events	1307	1570	1336	1385	1440
	1%	1%	1%	1%	1%
grade 5 events	4425	4552	4169	5005	4968
	3%	3%	3%	3%	3%
grade 6 events	2381	2723	2250	2275	2656
	2%	2%	1%	1%	2%
grade 7 events	99856	102111	114231	110971	107604
	85%	84%	87%	86%	85%

2.2 Compared Parameters

Parameter	Planned	Actual	Parameter	Planned	Actual
Instrument	ACIS	ACIS	Obspar format version number	7	7
Detector	ACIS-01236	ACIS-01236	Obspar file type	PREDICTED	ACTUAL
Grating	NONE	NONE	Obspar update status	NONE	UPDATED
Data mode	VFAINT	VFAINT	Number of optional ACIS chips dropped	0	0
Observation mode	POINTING	POINTING	On-chip summing requested	N	N
[deg] Pointing RA	78.657811	78.61921527240703	Subarray requested	NONE	NONE
[deg] Pointing Dec	-49.324500	-49.33535805131917	Alternating exposures requested	N	N
[deg] Pointing Roll	172.940109	173.1194991100182	[s] Primary exposure time	0.000000	3.1
[mm] SIM focus pos	-0.782348	-0.7809083437167272			
[mm] SIM defocus	0	0.001439871863259334			
[mm] SIM translation stage pos	-233.592463	-233.5874344608287			
[mm] SIM translation stage offset	0	-0.005018542100998502			
[s] Observation start time (MET)	203843924.184000	203842912.96149			
Observation start date	2004-06-17T07:17:40	2004-06-17T07:01:52			
[s] Observation end time (MET)	203863924.184000	203864291.89993			
Observation end date	2004-06-17T12:51:00	2004-06-17T12:58:11			
Read mode	TIMED	TIMED			

2.3 Aspect



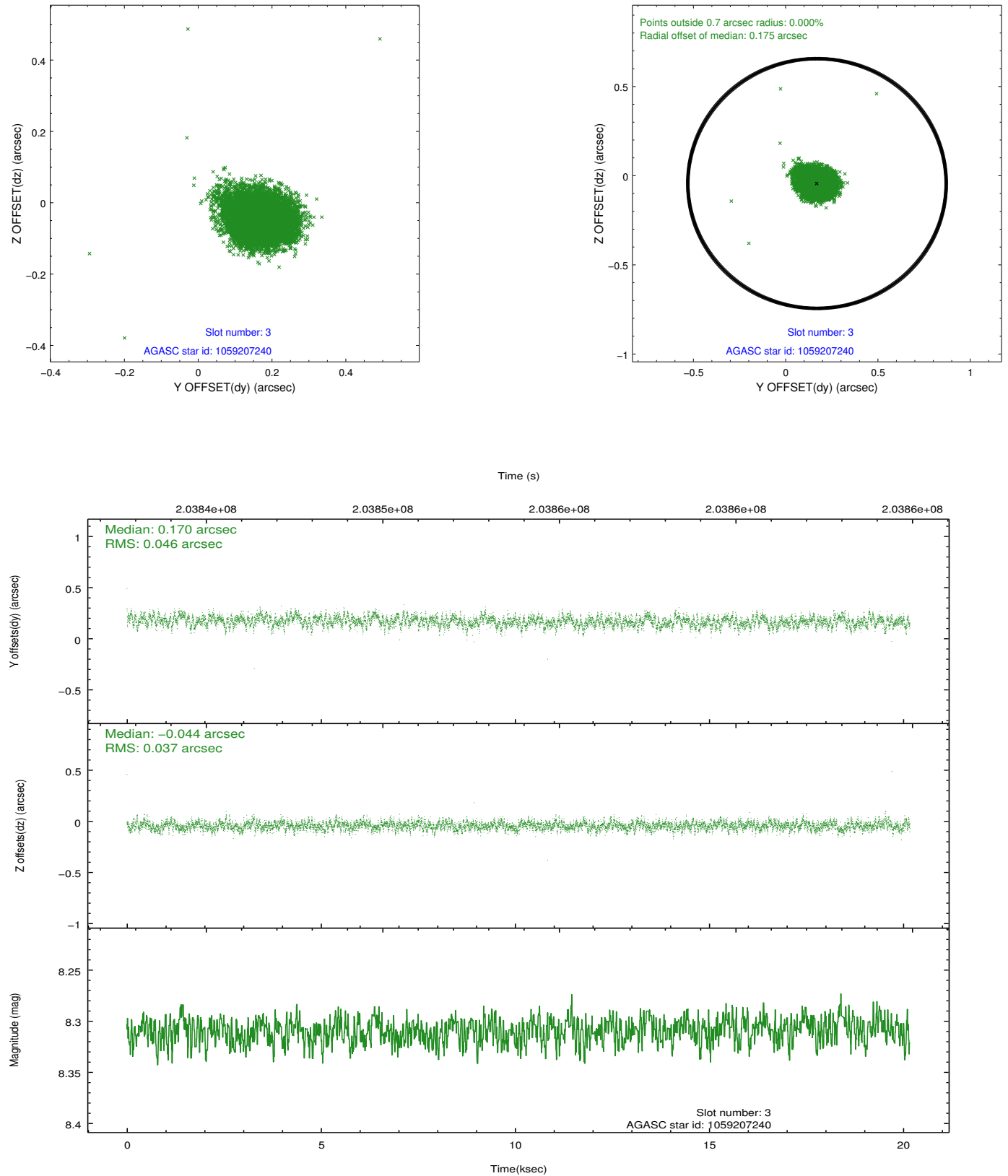


Slot Statistics

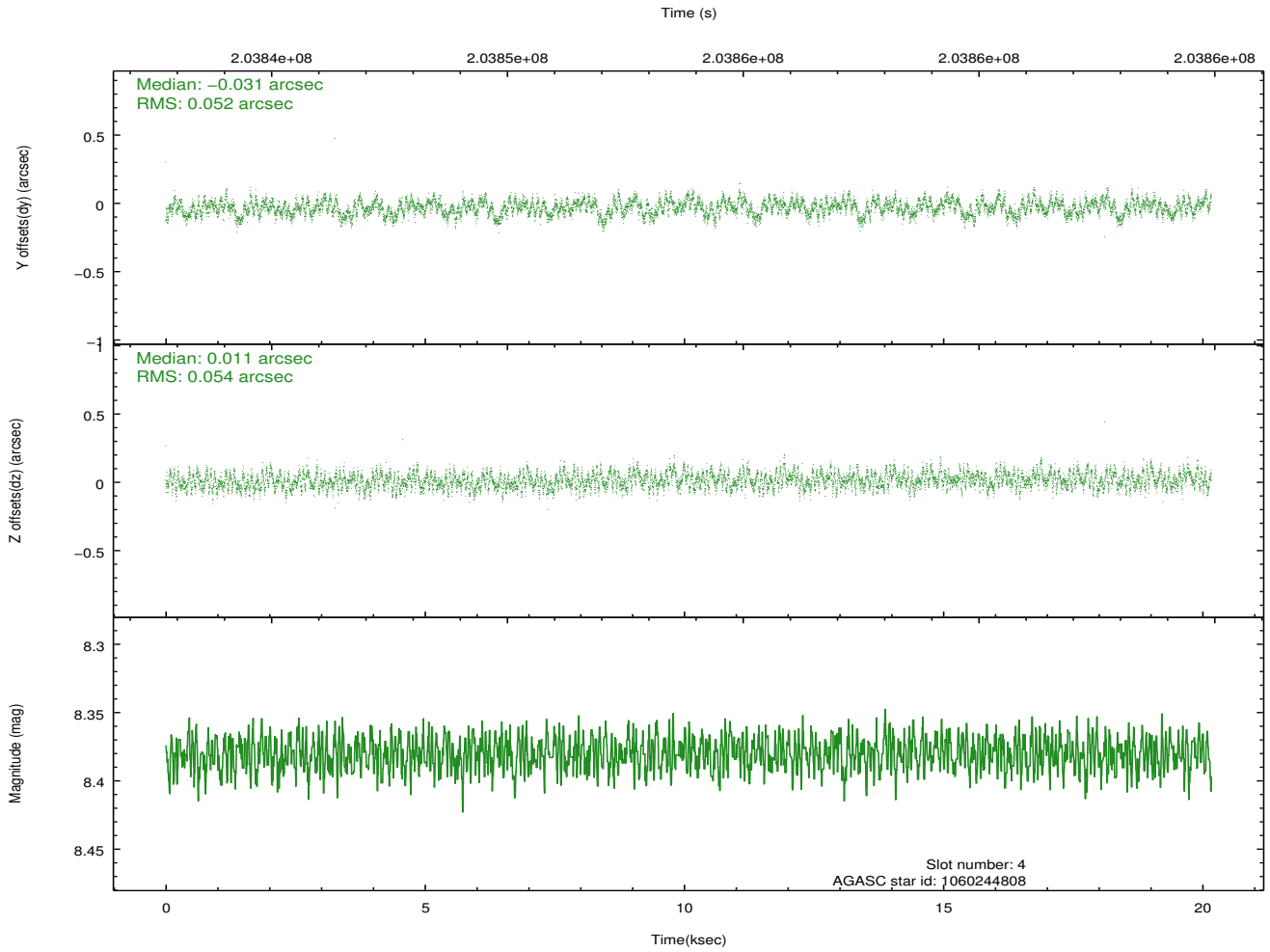
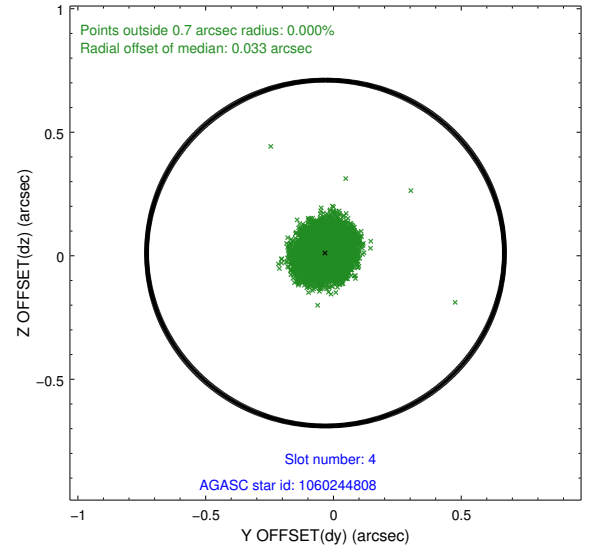
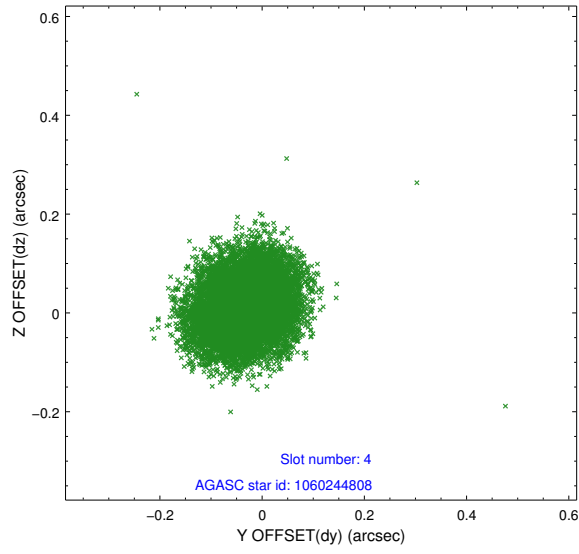
slot	status	id	mag	n_pts	med_dy	med_dz	dr1	dr2	ra	dec	mean_y	mean_z
0	FID	ACIS-I-1	7.24	4921	0.011	0.012	0.012	0.023	0.000000	0.000000	933.45	-833.70
1	FID	ACIS-I-5	7.23	4921	-0.155	0.033	0.012	0.019	0.000000	0.000000	-1814.71	1063.73
2	FID	ACIS-I-6	7.25	4921	0.051	0.025	0.015	0.026	0.000000	0.000000	398.85	1708.43
3	GUIDE	1059207240	8.31	9840	0.170	-0.044	0.062	0.101	78.013724	-49.060243	1624.51	-750.79
4	GUIDE	1060244808	8.38	9838	-0.031	0.011	0.081	0.125	78.979100	-48.690695	-476.91	-2356.03
5	GUIDE	1060771312	9.39	9833	-0.070	0.050	0.084	0.133	79.424524	-48.911494	-1618.44	-1689.46
6	GUIDE	1060771728	7.66	9838	-0.110	-0.039	0.064	0.101	79.196689	-49.599626	-1370.03	832.83
7	GUIDE	1059200200	9.52	9827	0.045	0.022	0.104	0.171	77.793482	-49.012945	2162.05	-850.39

2.4 Star Slots

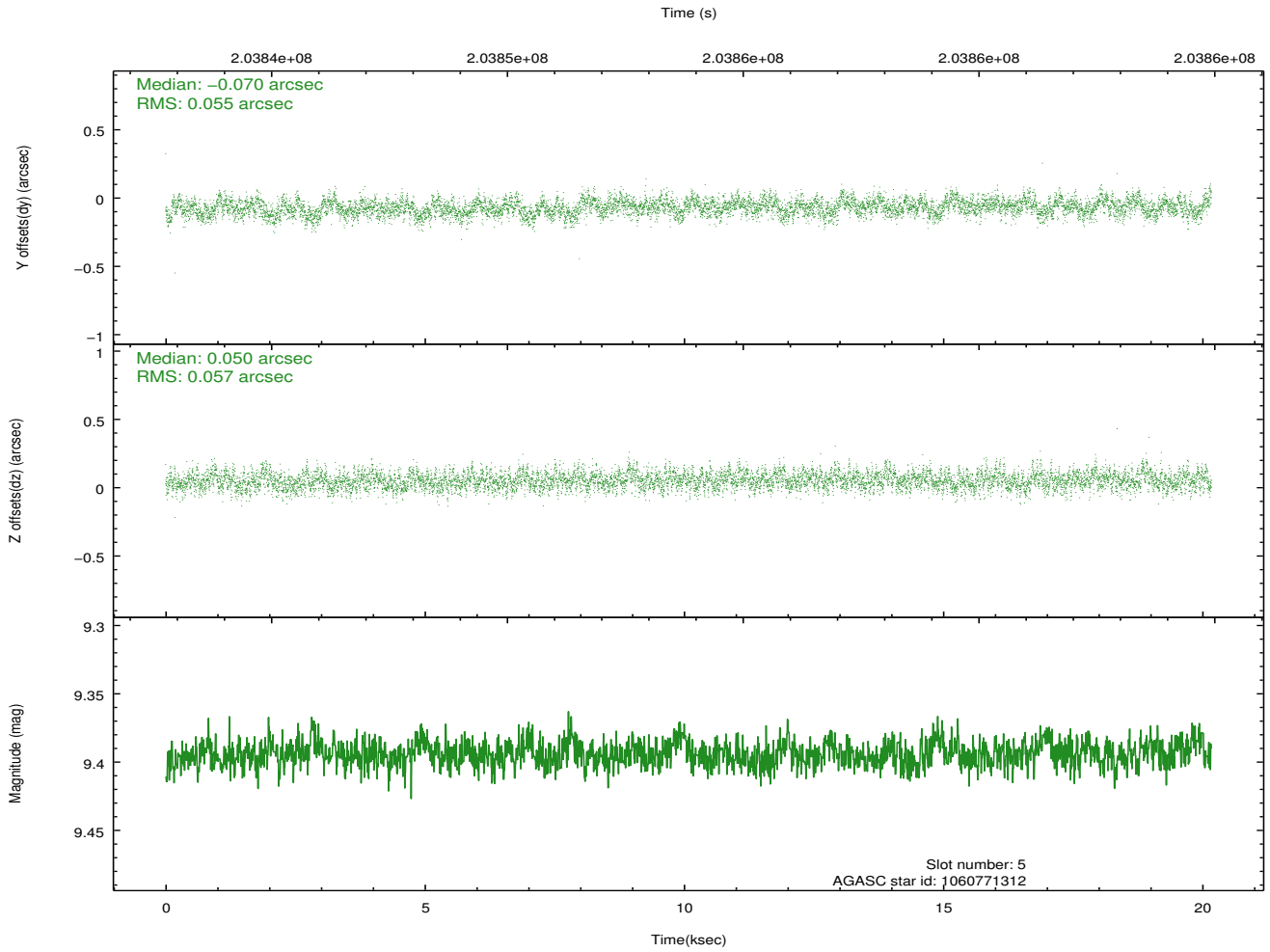
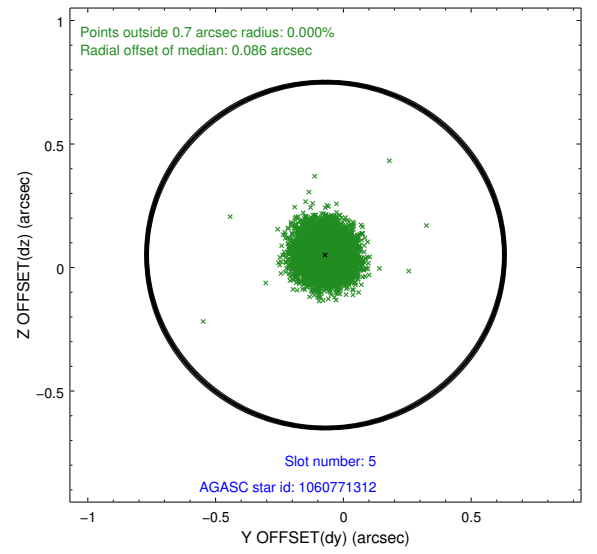
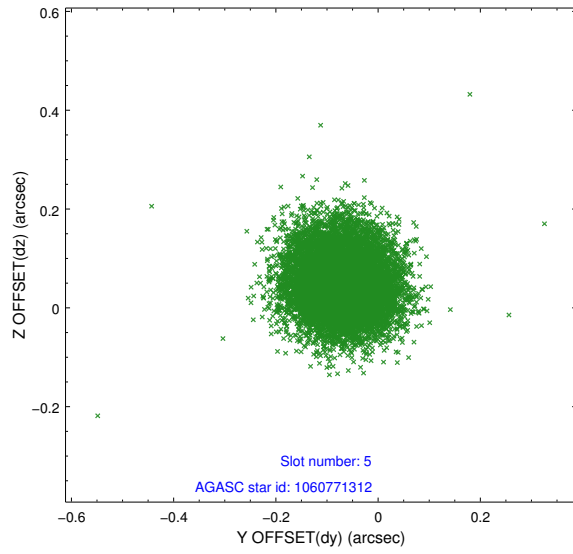
2.4.1 Slot 3



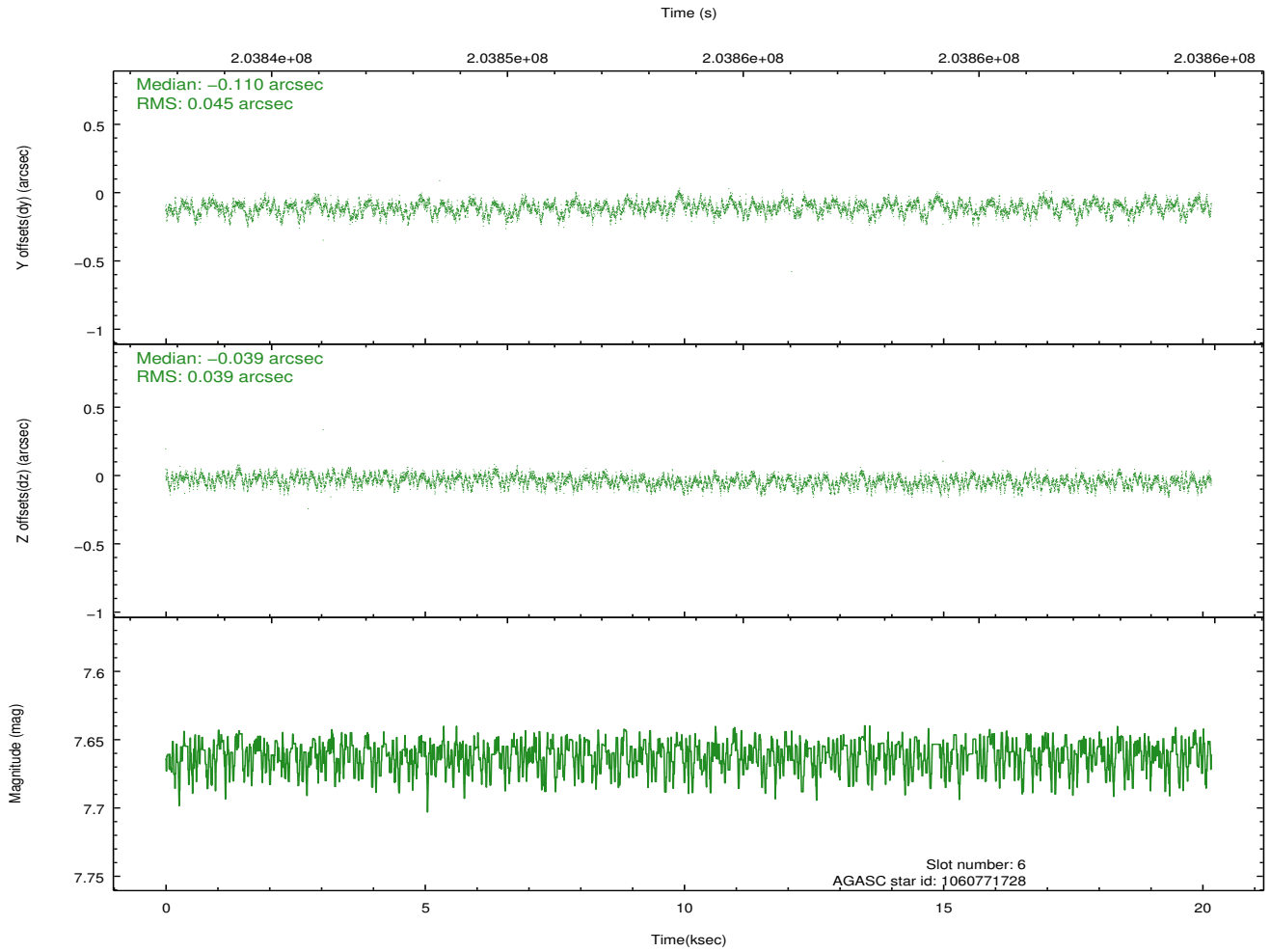
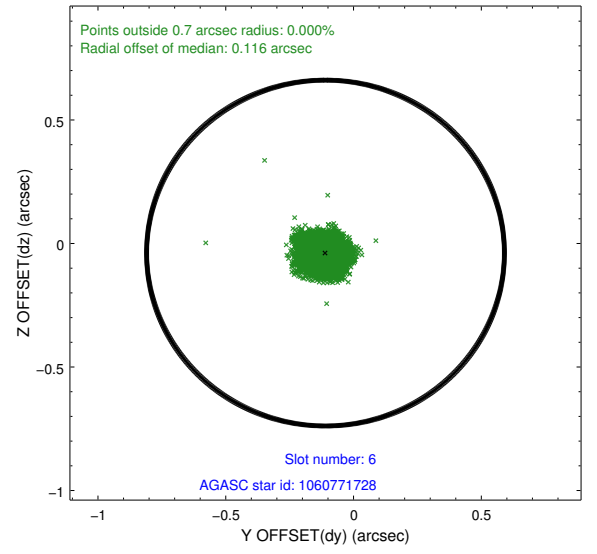
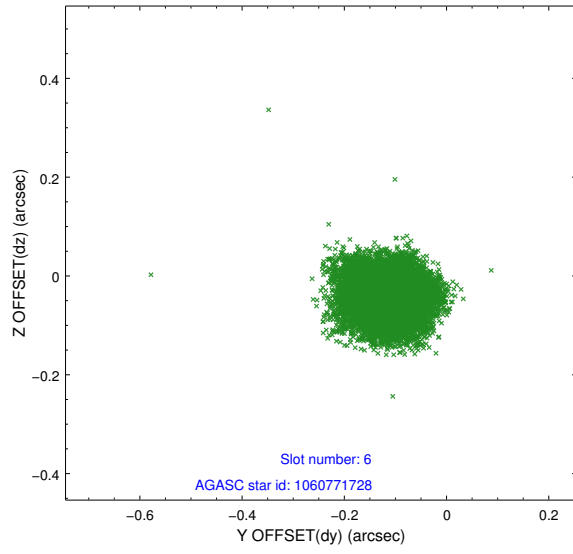
2.4.2 Slot 4



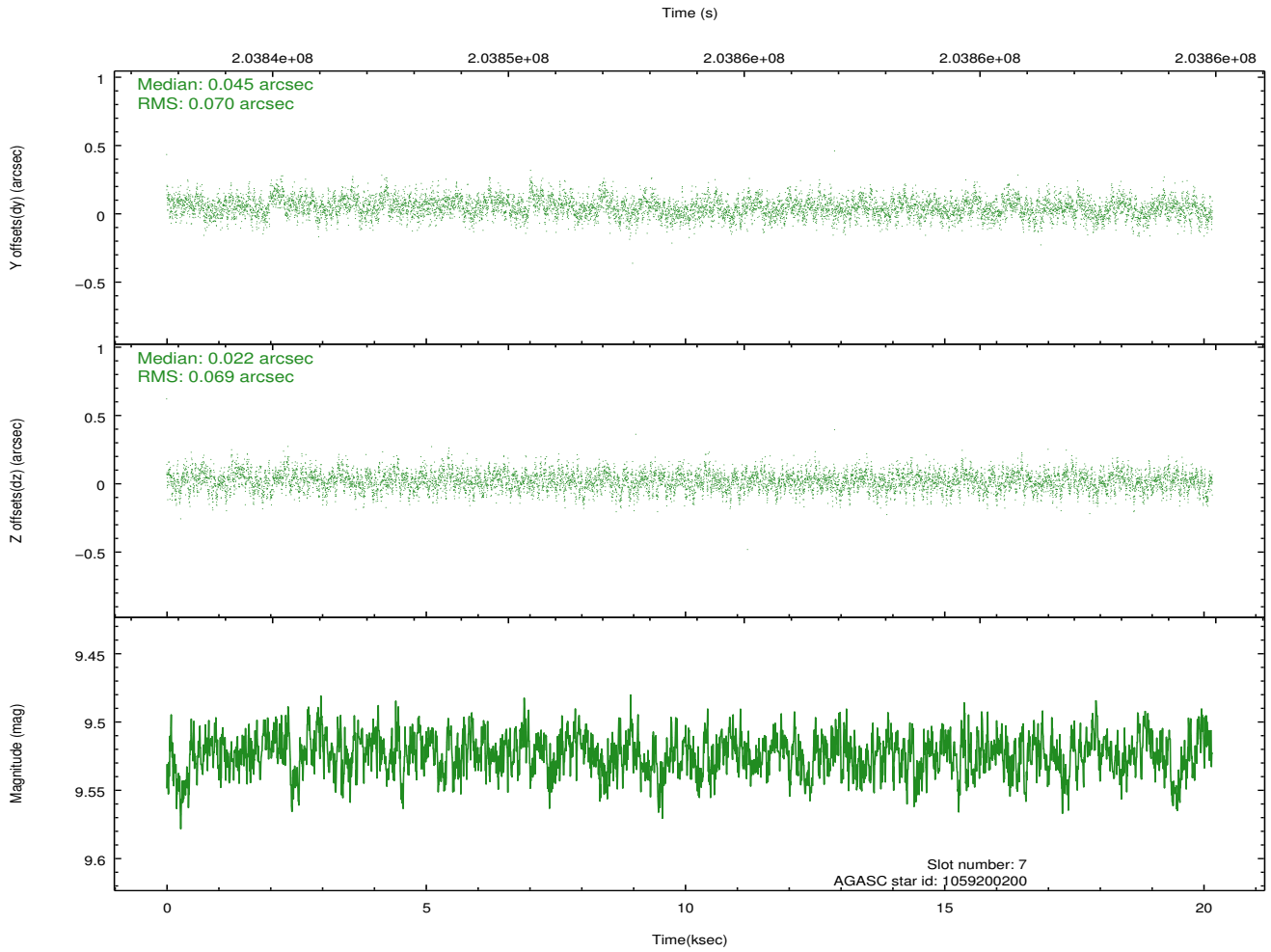
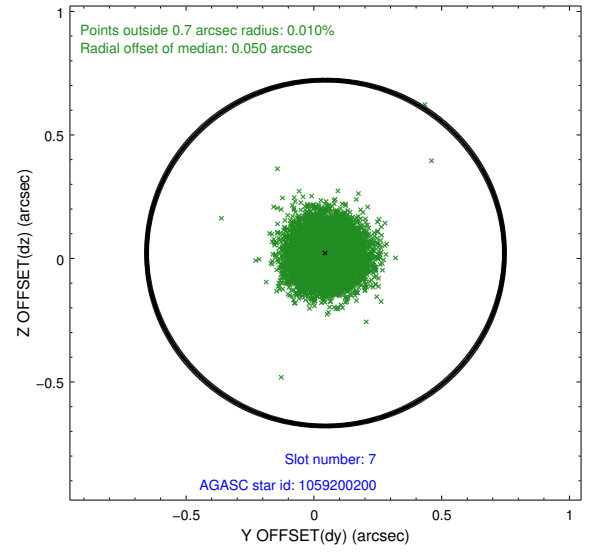
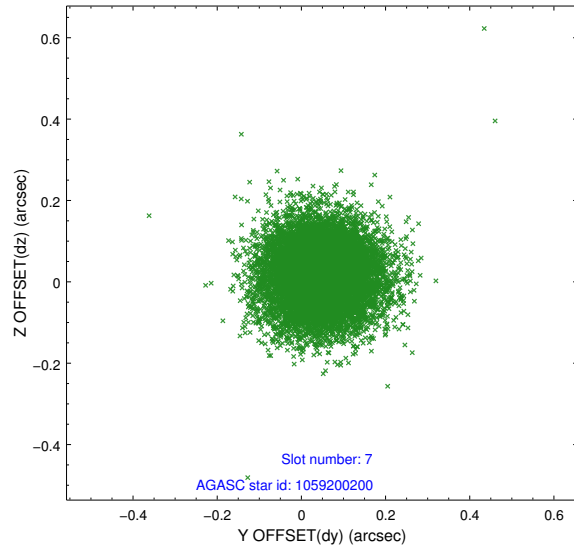
2.4.3 Slot 5



2.4.4 Slot 6

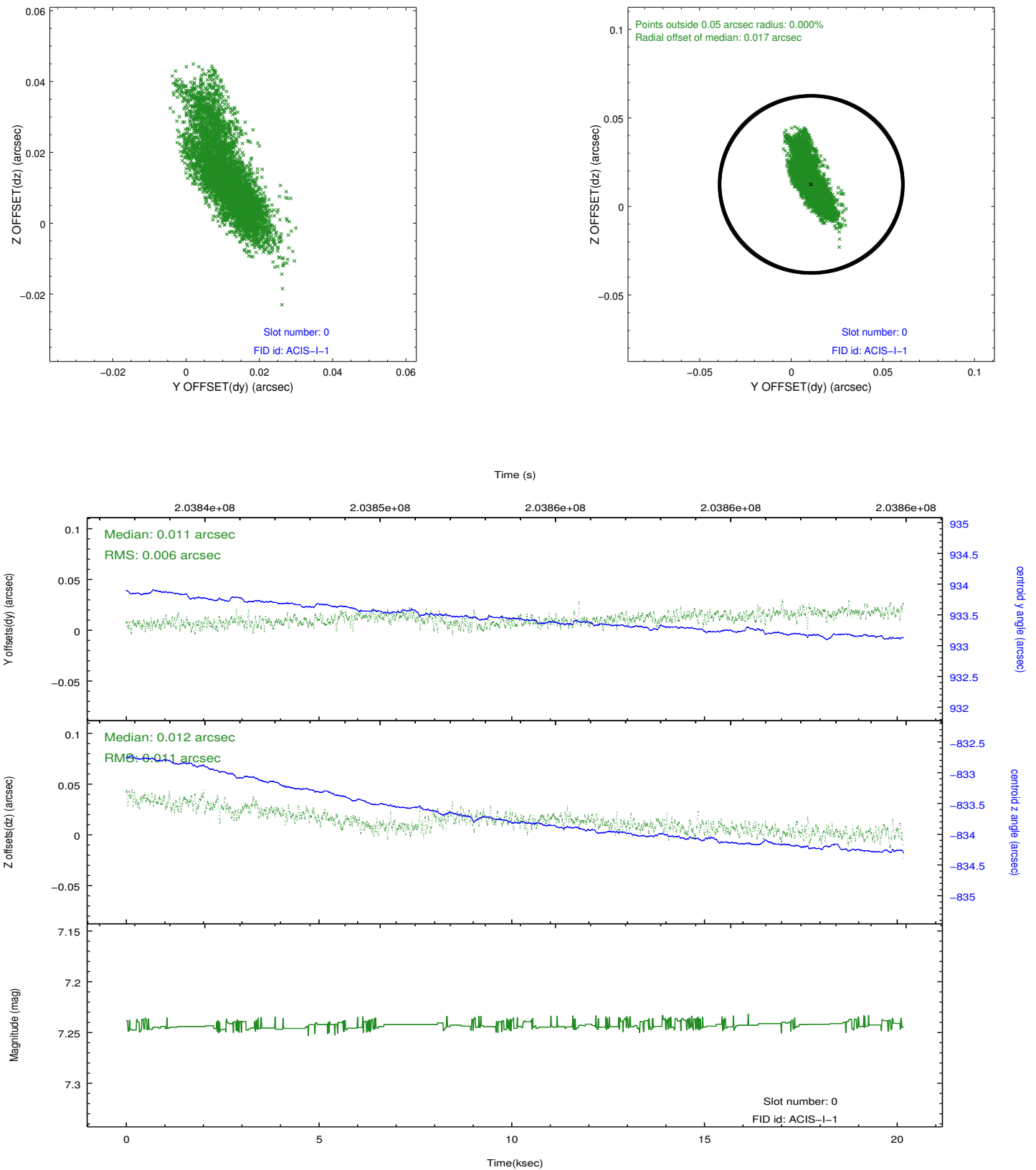


2.4.5 Slot 7

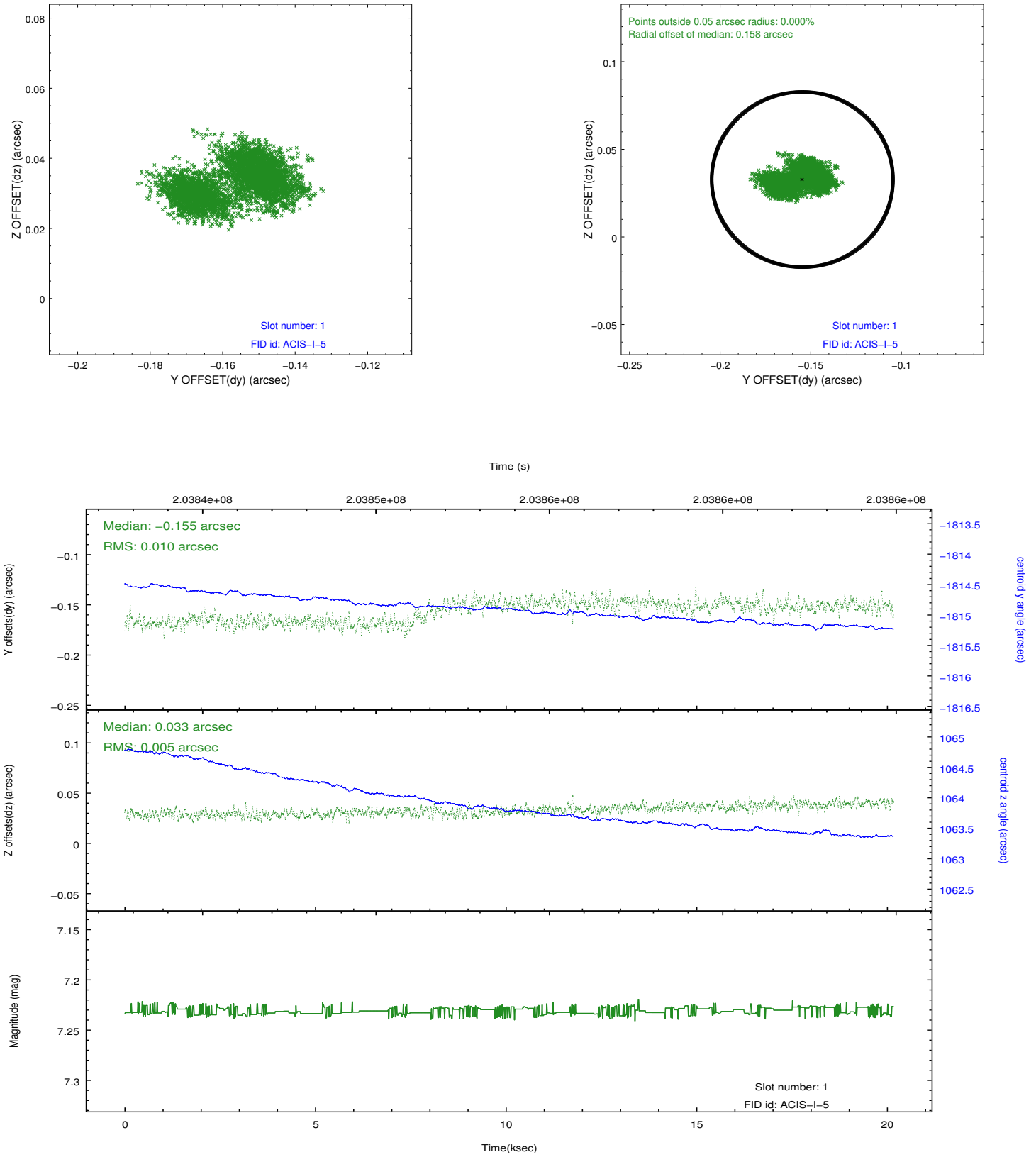


2.5 FID Slots

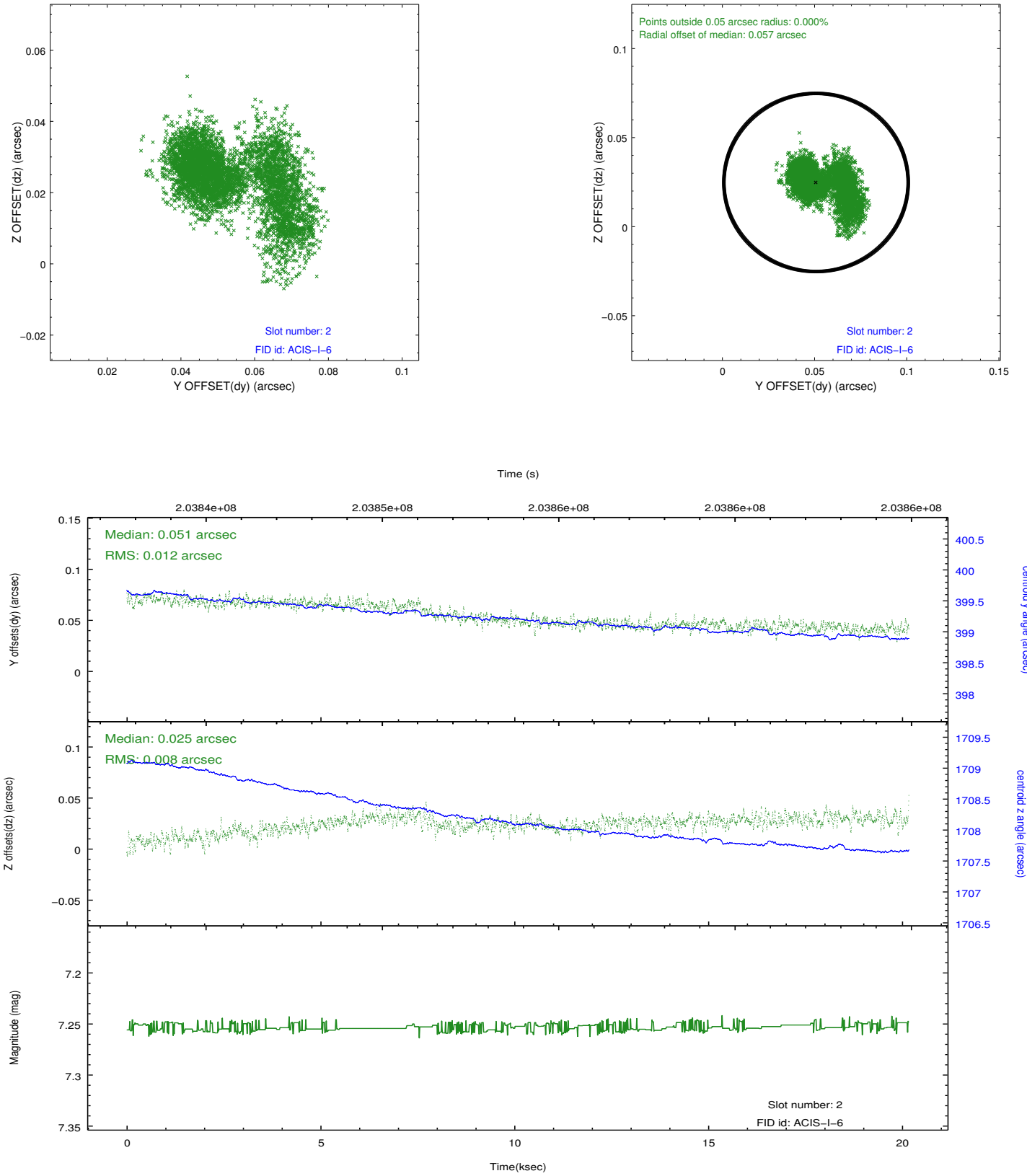
2.5.1 Slot 0



2.5.2 Slot 1



2.5.3 Slot 2



A Summary

A.1 Status

V&V Scientist	Jen Lauer
V&V Date (YYYY-MM-DD)	2012.12.18
V&V Edition	1
V&V Disposition and Status	OK
V&V Charge Time	20.165

A.2 Comments