

V&V Reference Report

L2 ASCDS Version : 8.4.5

Observation 4891 - L2 Version 3
Chandra X-Ray Center

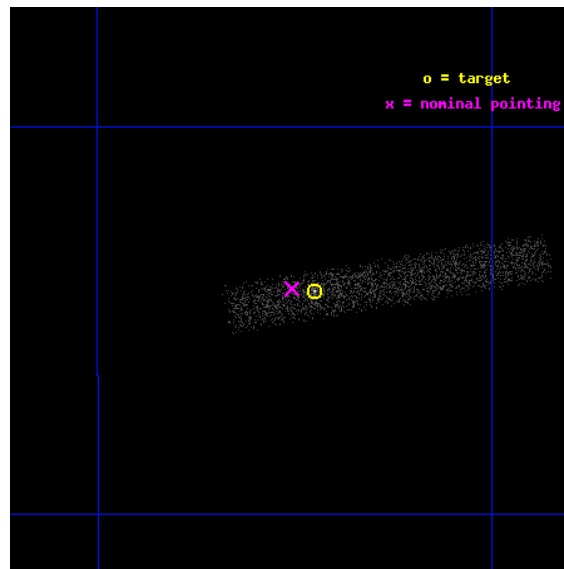
L2 Processing Date : Nov 13 2012

Contents

1	Front	2
2	OBI	3
2.1	OBI	3
2.1.1	Images	3
2.1.2	Bias	3
2.1.3	Parameters	4
2.1.4	Events	4
2.2	Compared Parameters	5
2.3	Aspect	6
2.4	Star Slots	9
2.4.1	Slot 3	9
2.4.2	Slot 4	10
2.4.3	Slot 5	11
2.4.4	Slot 6	12
2.4.5	Slot 7	13
2.5	FID Slots	14
2.5.1	Slot 0	14
2.5.2	Slot 1	15
2.5.3	Slot 2	16
A	Summary	17
A.1	Status	17
A.2	Comments	17

1 Front

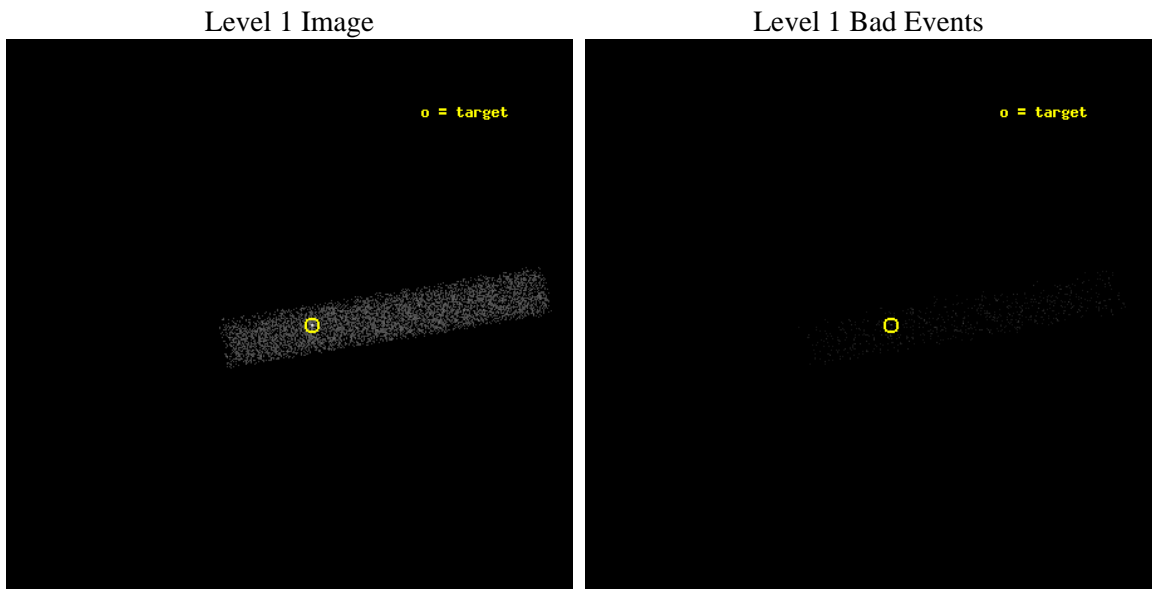
seq_num	700973	Sequence number
obs_id	4891	Observation id
title	Continuing a Flux-limited Survey for X-ray Emission from Radio Jets	
observer	Dr. Herman Marshall	Principal investigator
object	1116-462	Source name
dtcycle	0	
cycle	P	events from which exps? Prim/Second/Both
ra_targ	169.6125	Observer's specified target RA [deg]
dec_targ	-46.570833	Observer's specified target Dec [deg]
ra_nom	169.62681944446	Nominal RA [deg]
dec_nom	-46.569947869739	Nominal Dec [deg]
roll_nom	350.54799430968	Nominal Roll [deg]
revision	3	Processing version of data
ontime	6200.4000923634	Sum of GTIs [s]
livetime	5623.4355998217	Livetime [s]
ontime7	6200.4000923634	Sum of GTIs [s]
l2events	4310	Number of level 2 events



2 OBI

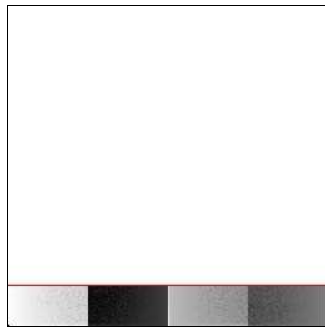
2.1 OBI

2.1.1 Images



2.1.2 Bias

Chip 7



2.1.3 Parameters

obi_num	0	Obi number	sched_exp_time	6043.000000	[s] Scheduled observation exposure time
ascdsver	8.4.5	Processing system revision	ontime	6200.4000923634	Sum of GTIs [s]
caldsver	4.5.2	 	ontime7	6200.4000923634	Sum of GTIs [s]
date	2012-11-13T20:09:31	Date and time of file creation	l1events	9803	Number of level 1 events
revision	3	Processing version of data			

2.1.4 Events

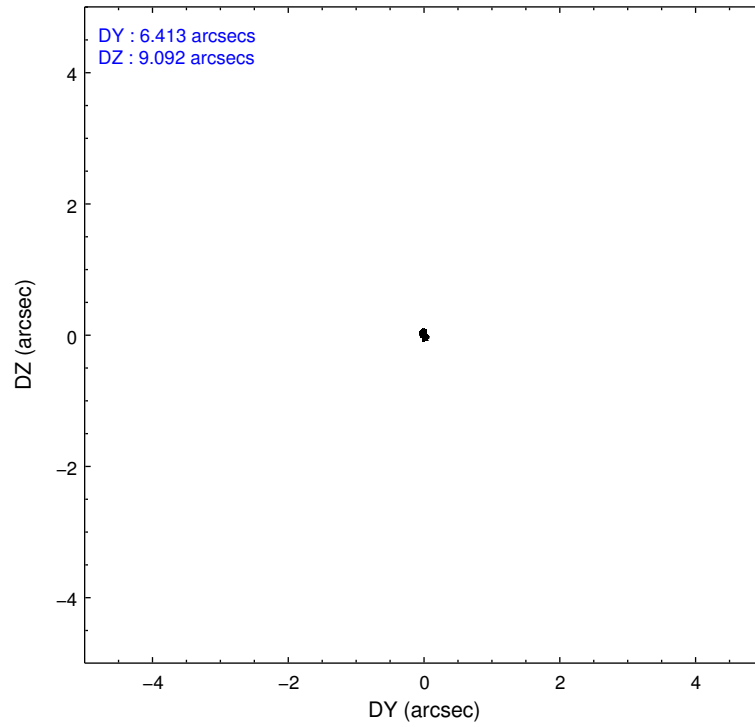
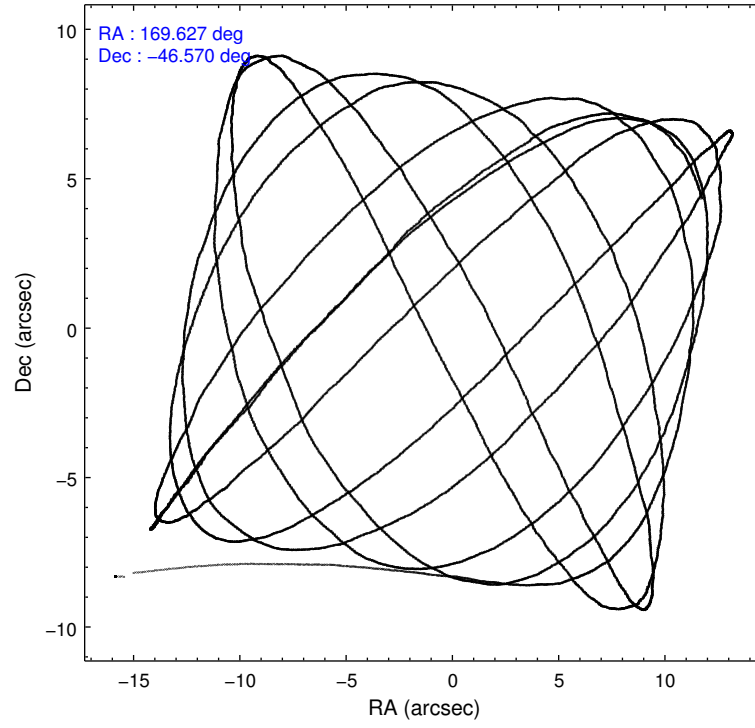
	ccd 7
level 1 events	9803
rejected events	5372
rejected %	54%

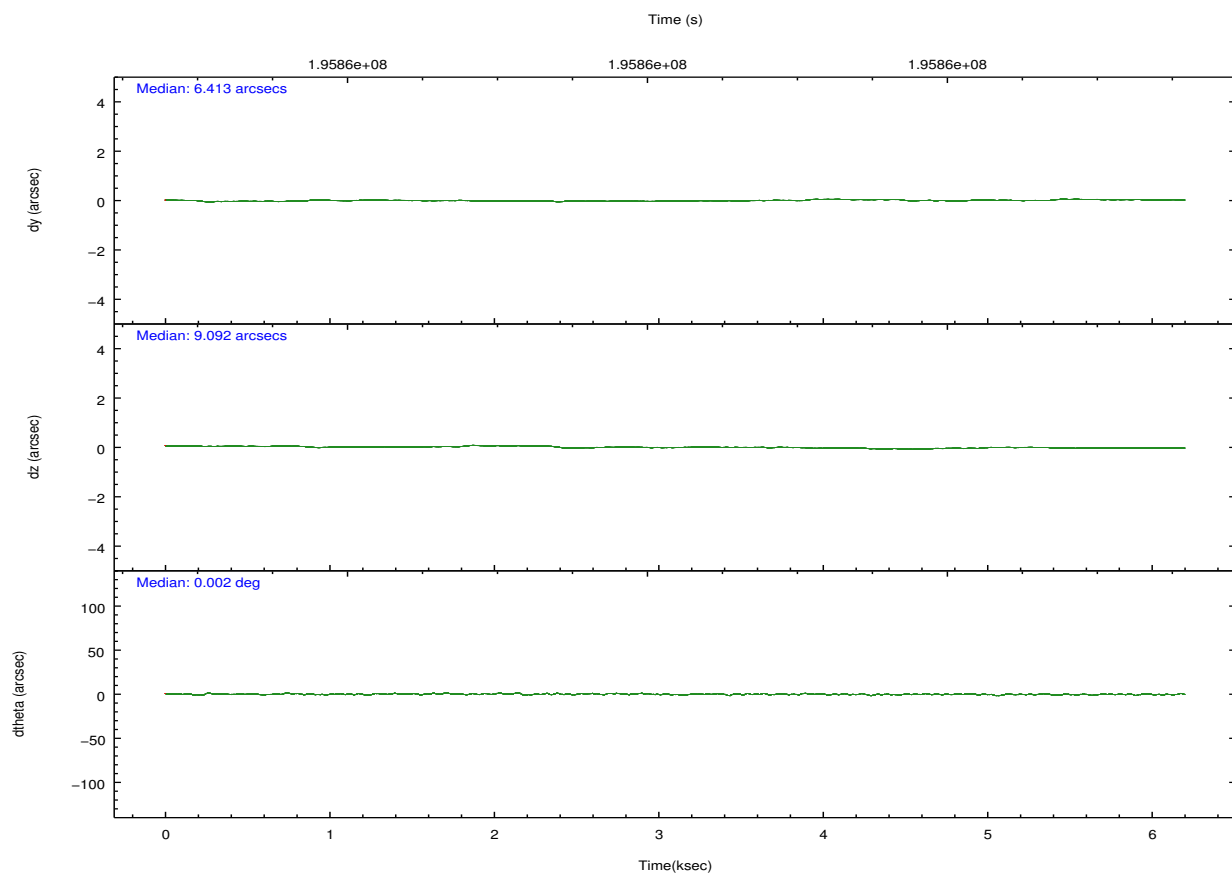
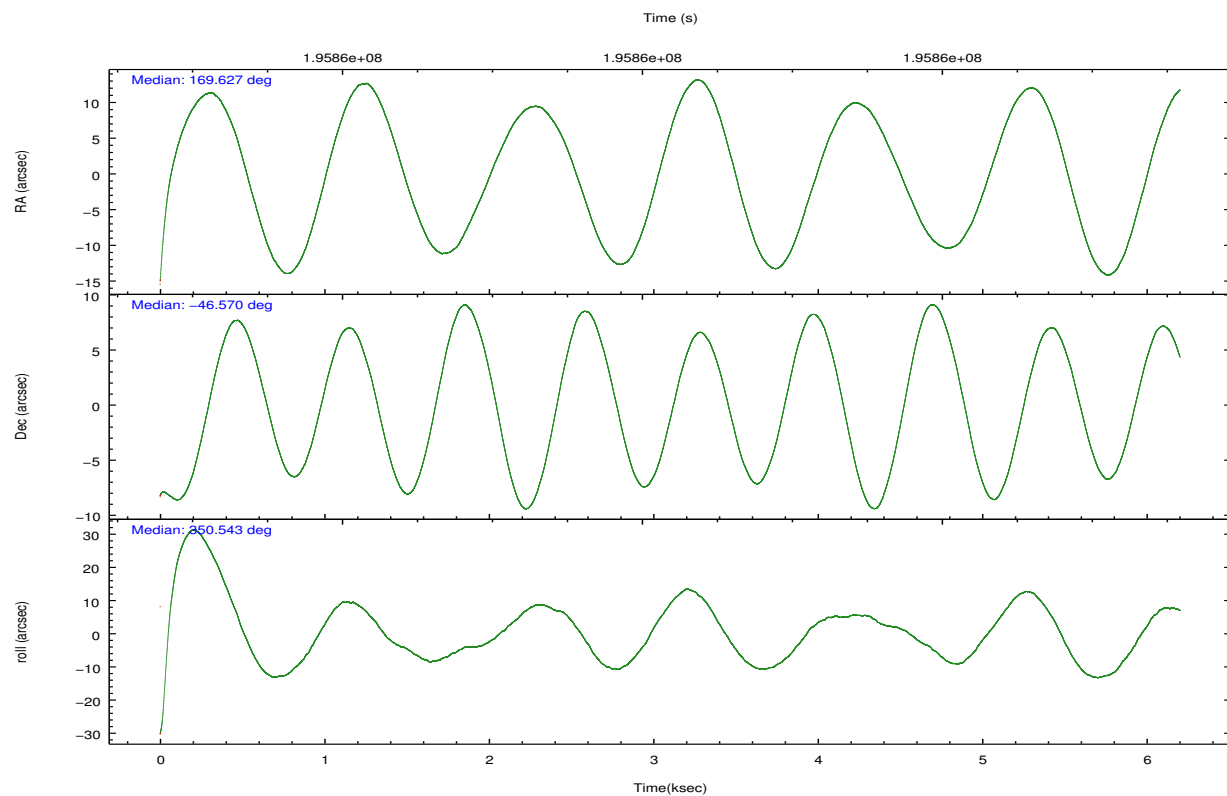
	ccd 7
grade 0 events	672
	6%
grade 1 events	5
	0%
grade 2 events	1016
	10%
grade 3 events	695
	7%
grade 4 events	611
	6%
grade 5 events	756
	7%
grade 6 events	2117
	21%
grade 7 events	3931
	40%

2.2 Compared Parameters

Parameter	Planned	Actual	Parameter	Planned	Actual
Instrument	ACIS	ACIS	Obspar format version number	7	7
Detector	ACIS-7	ACIS-7	Obspar file type	PREDICTED	ACTUAL
Grating	NONE	NONE	Obspar update status	NONE	UPDATED
Data mode	FAINT	FAINT	Number of optional ACIS chips dropped	0	0
Observation mode	POINTING	POINTING	On-chip summing requested	N	N
[deg] Pointing RA	169.589864	169.6268194444601	Subarray requested	CUSTOM	1/8
[deg] Pointing Dec	-46.579857	-46.56994786973928	Subarray start row	1	1
[deg] Pointing Roll	350.364599	350.5479943096801	Subarray row count	128	128
[mm] SIM focus pos	-0.684267	-0.6828225247311905	Alternating exposures requested	N	N
[mm] SIM defocus	0	0.001444936568705701	[s] Primary exposure time	0.000000	0.4
[mm] SIM translation stage pos	-178.632523	-178.6370735452349			
[mm] SIM translation stage offset	-11.5	-11.49544903777291			
[s] Observation start time (MET)	195855244.184000	195853794.57179			
Observation start date	2004-03-16T20:13:00	2004-03-16T19:49:54			
[s] Observation end time (MET)	195861287.184000	195861613.27213			
Observation end date	2004-03-16T21:53:43	2004-03-16T22:00:13			
Read mode	TIMED	TIMED			

2.3 Aspect



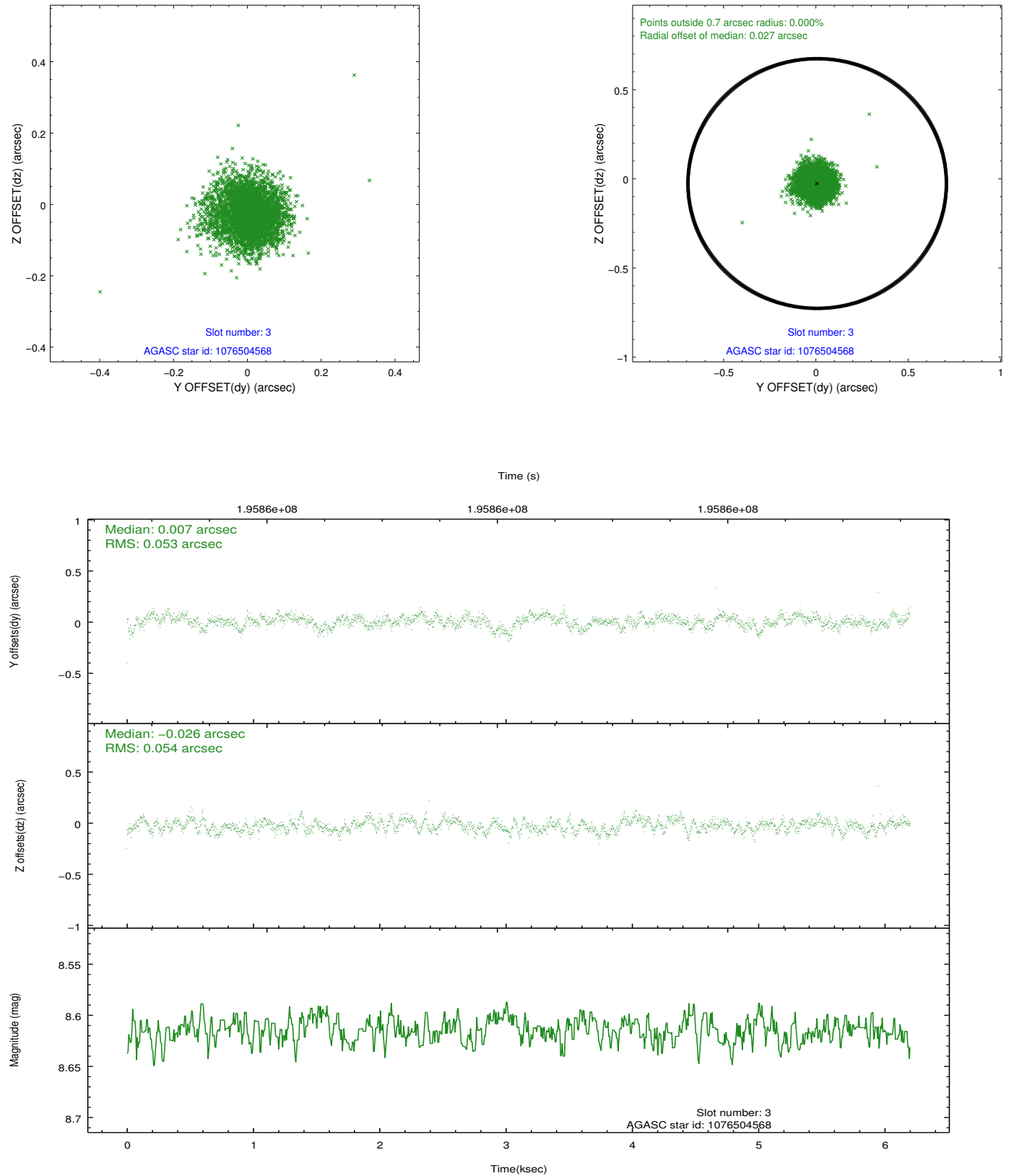


Slot Statistics

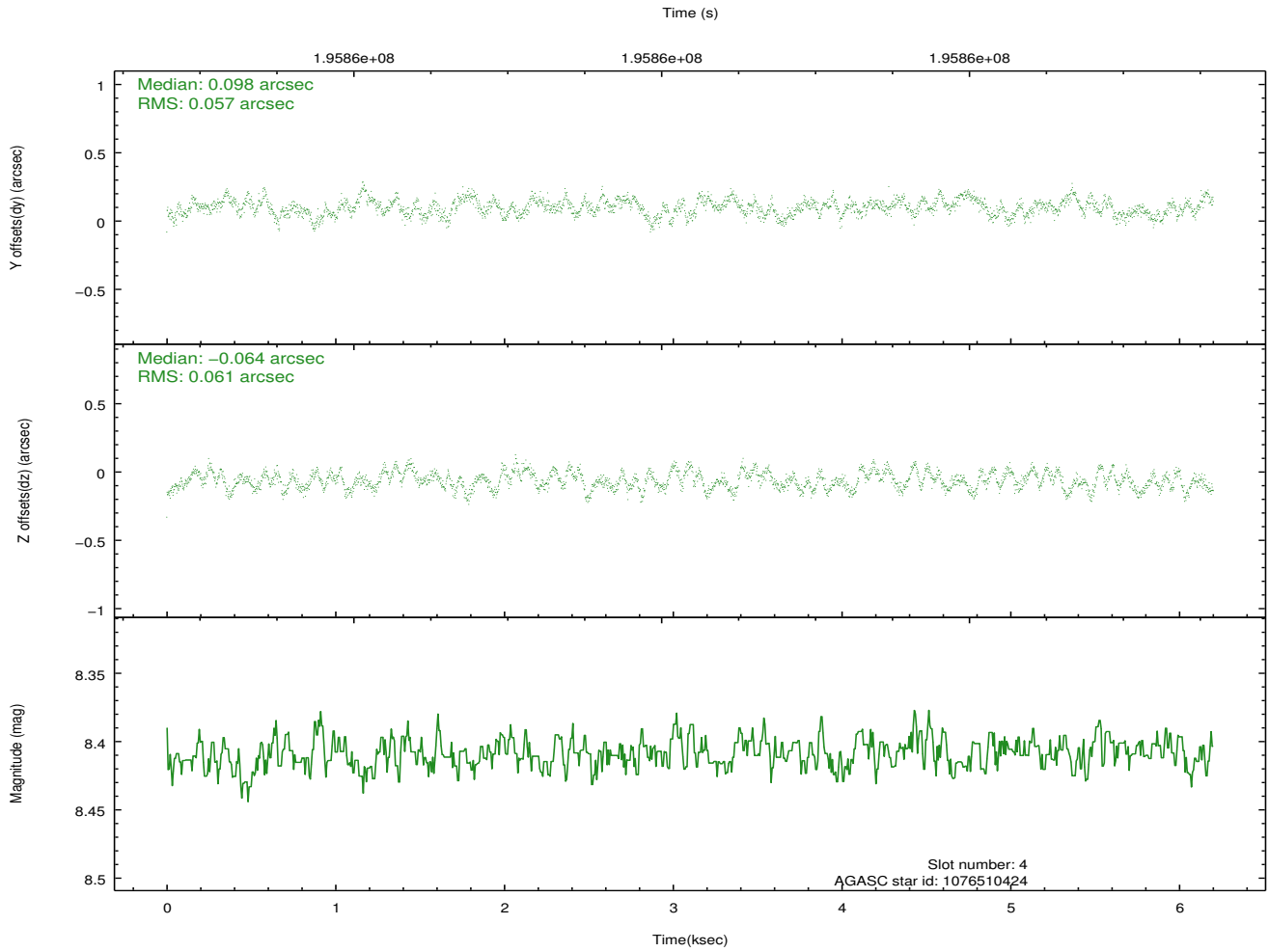
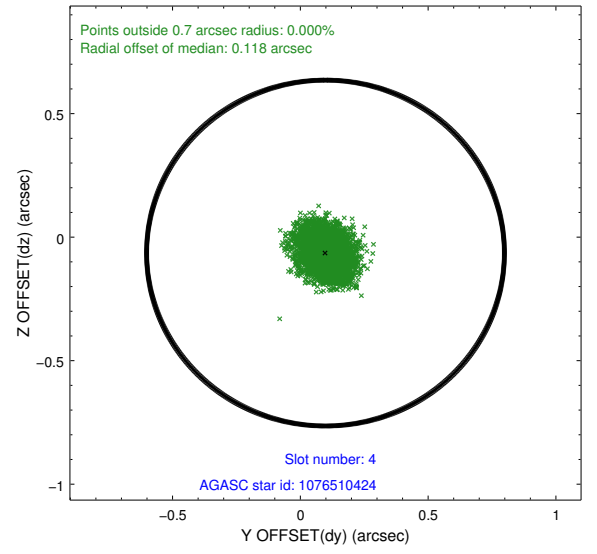
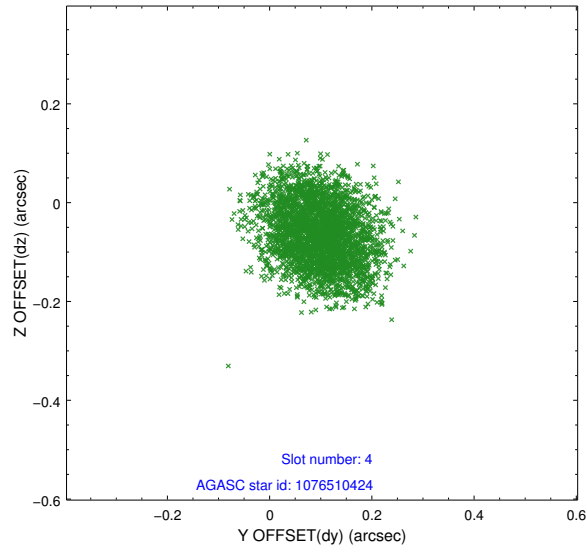
slot	status	id	mag	n_pts	med_dy	med_dz	dr1	dr2	ra	dec	mean_y	mean_z
0	FID	ACIS-S-2	7.08	1513	0.081	-0.327	0.007	0.012	0.000000	0.000000	-758.42	-1967.20
1	FID	ACIS-S-5	7.23	1513	-0.084	0.256	0.006	0.011	0.000000	0.000000	-1811.94	-65.69
2	FID	ACIS-S-6	7.43	1513	-0.023	0.076	0.006	0.010	0.000000	0.000000	402.32	578.88
3	GUIDE	1076504568	8.61	3026	0.007	-0.026	0.080	0.127	169.491382	-46.098352	-532.40	1667.61
4	GUIDE	1076510424	8.41	3026	0.098	-0.064	0.091	0.141	169.243956	-46.414451	-945.44	441.78
5	GUIDE	1076511400	10.00	3018	-0.047	-0.044	0.138	0.231	170.375926	-46.445884	1843.05	792.60
6	GUIDE	1077029216	9.74	3025	-0.006	-0.039	0.103	0.166	169.313574	-46.963370	-436.98	-1475.77
7	GUIDE	1077031040	9.84	3021	-0.059	0.174	0.103	0.169	169.771539	-47.213042	819.89	-2173.70

2.4 Star Slots

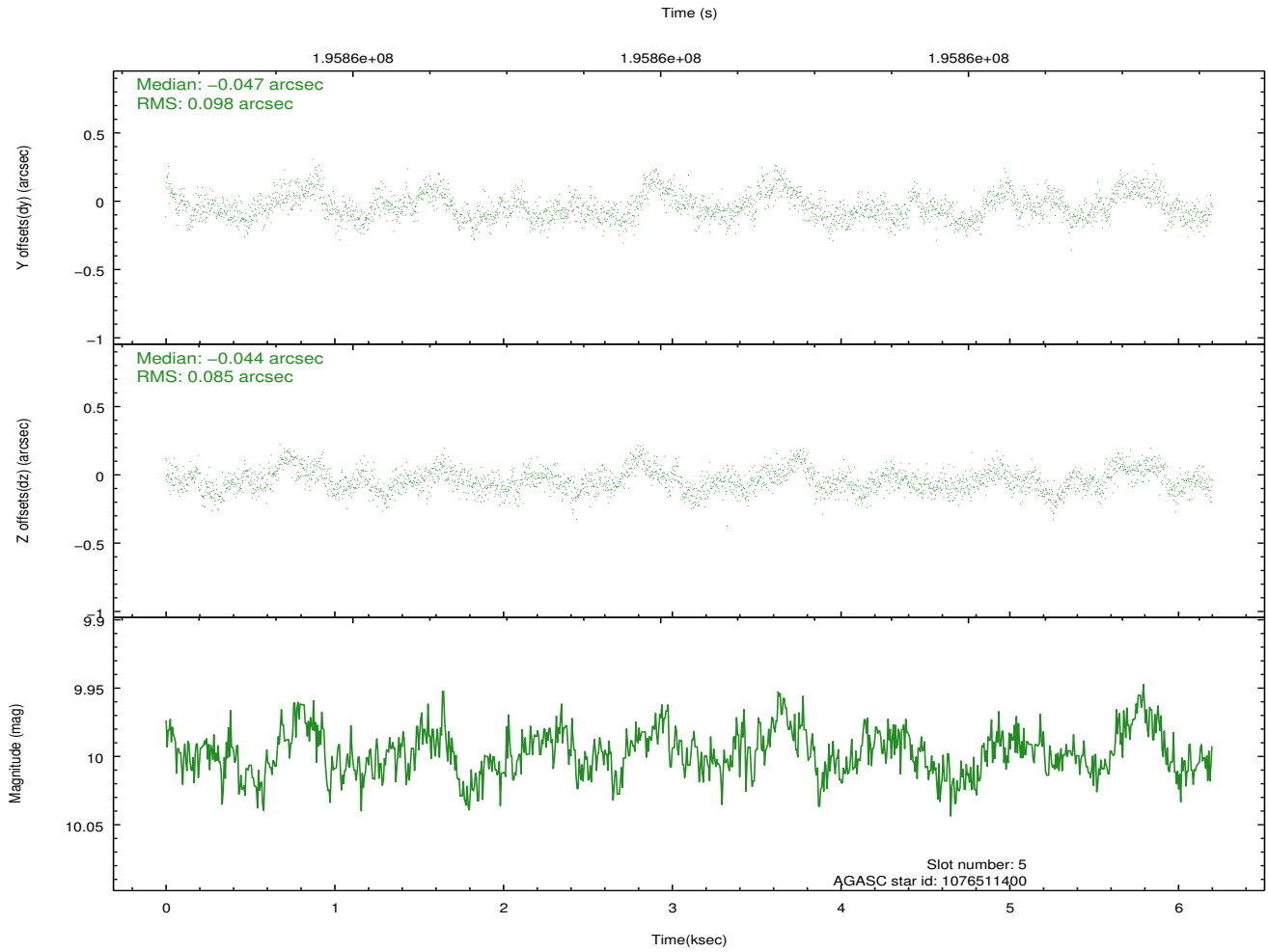
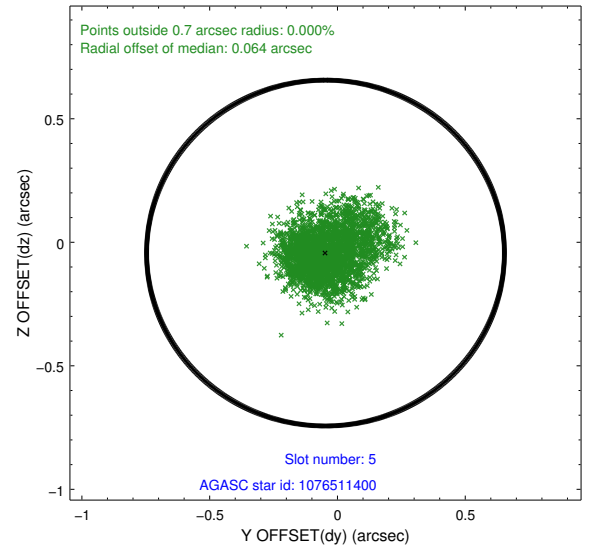
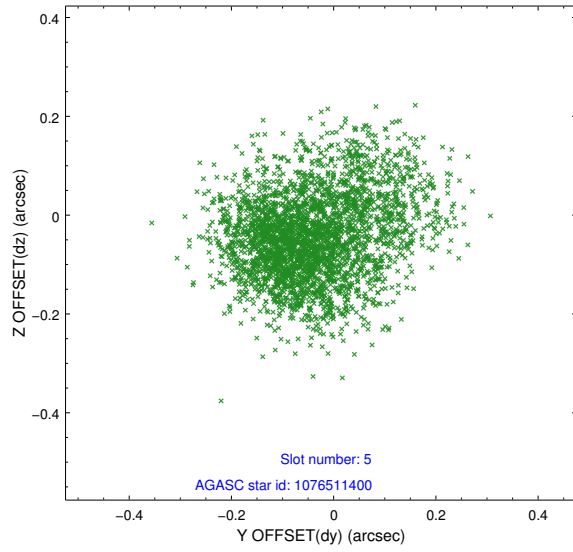
2.4.1 Slot 3



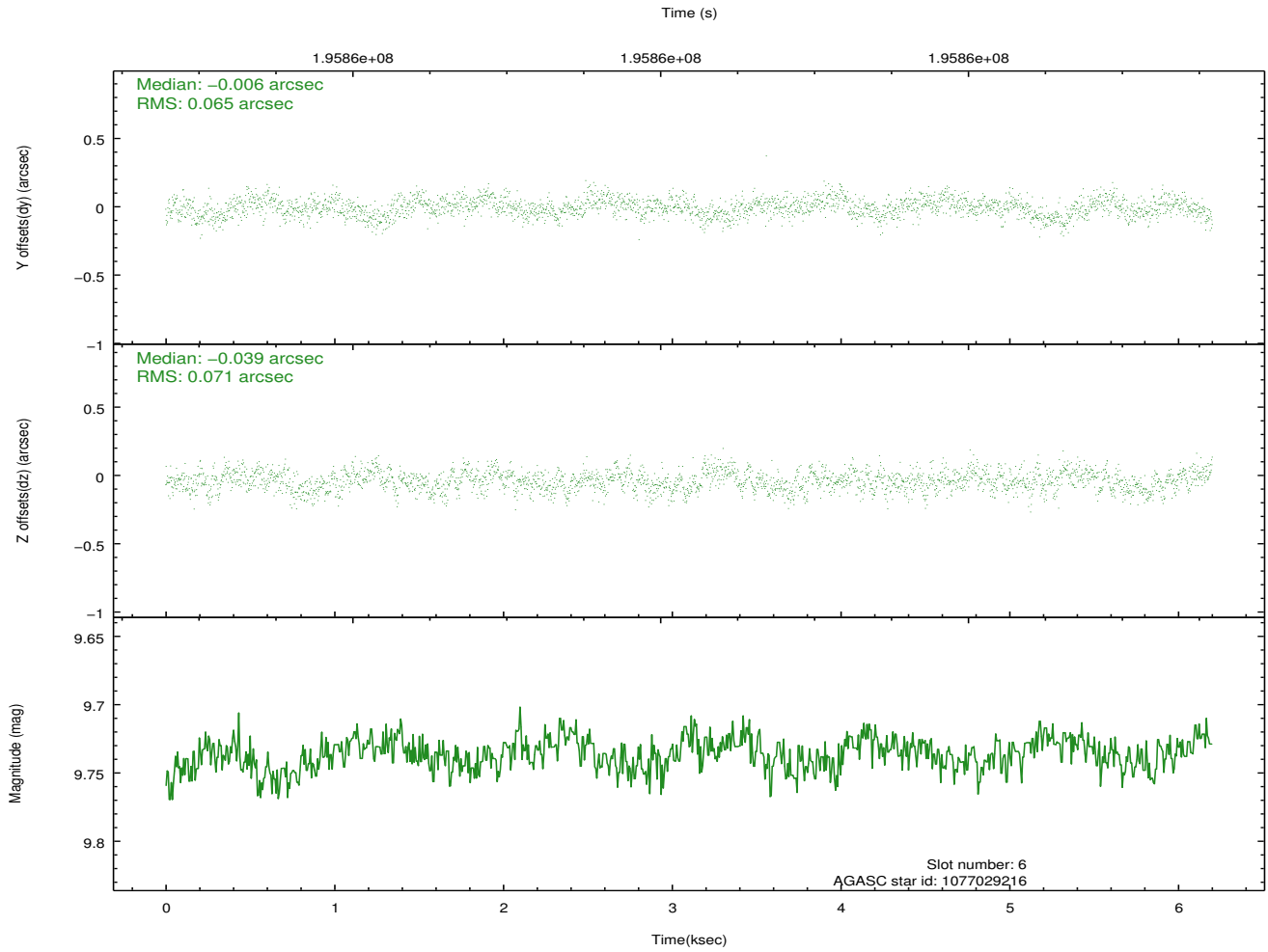
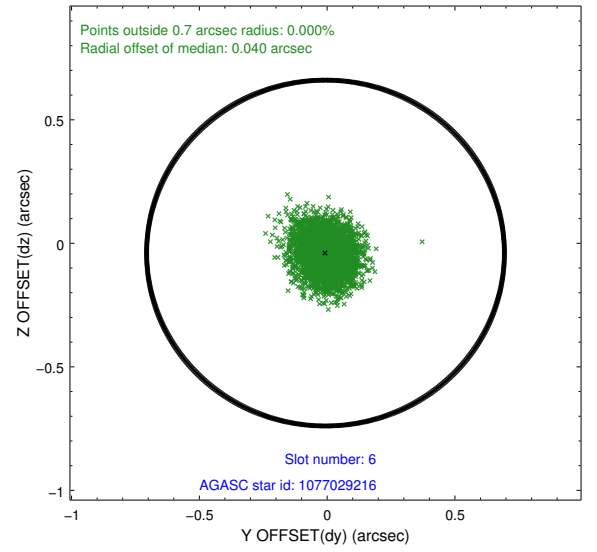
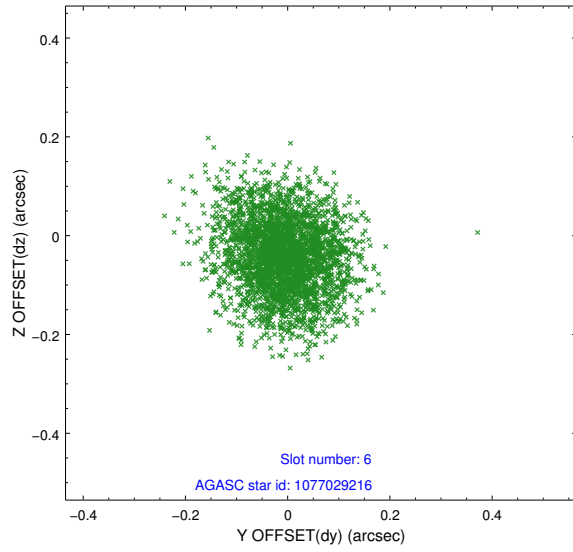
2.4.2 Slot 4



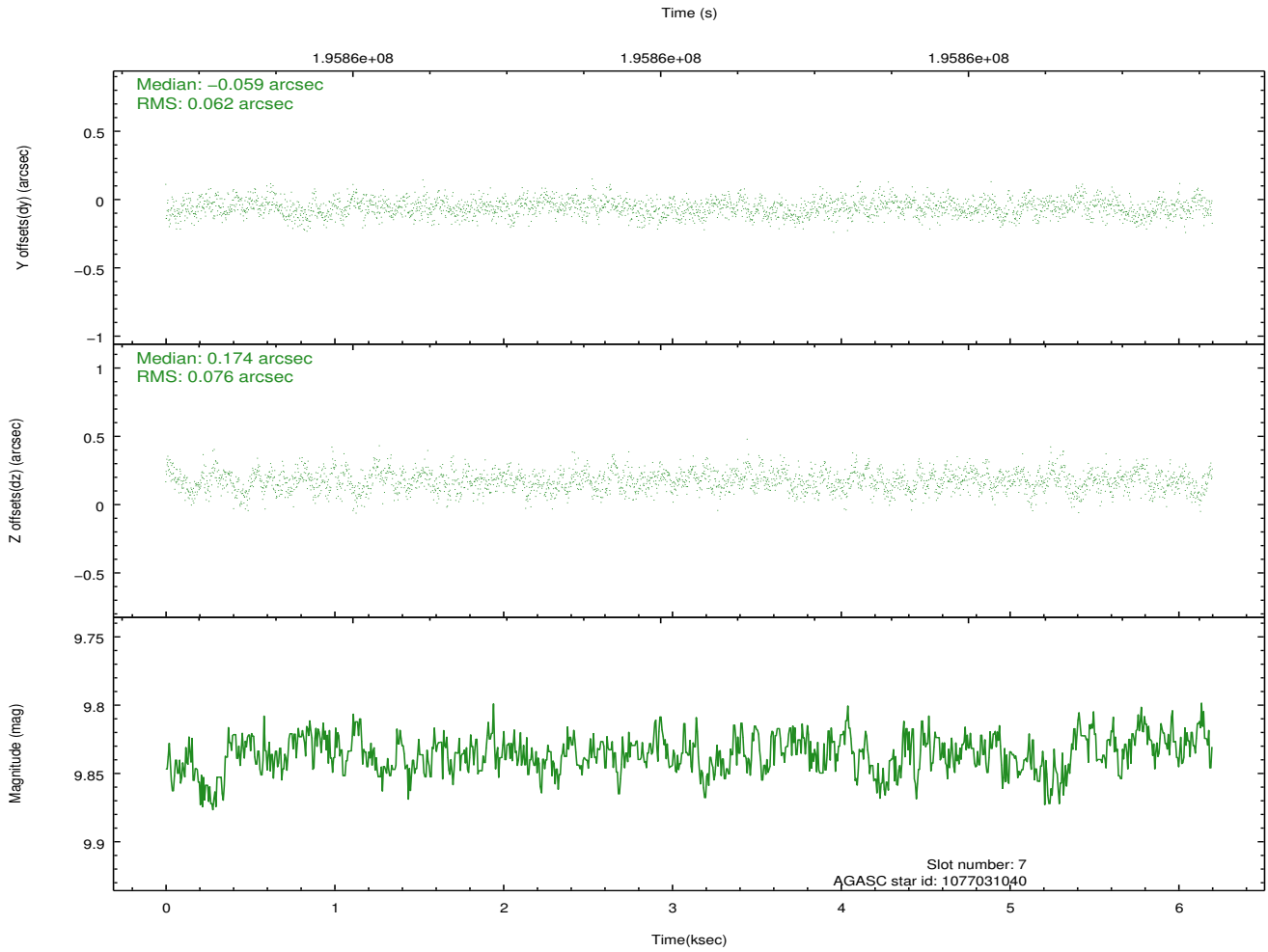
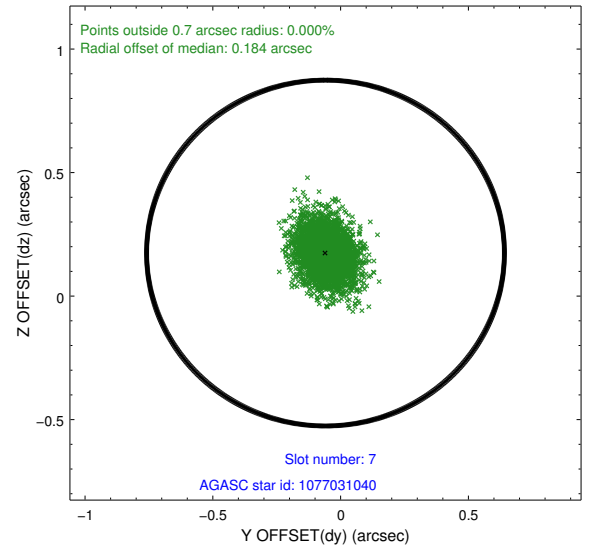
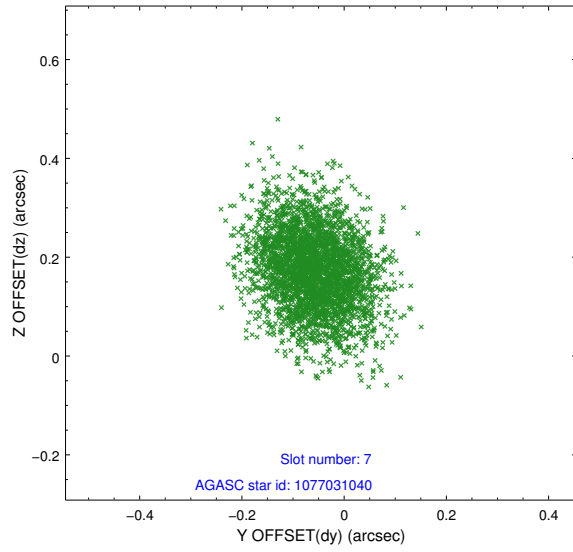
2.4.3 Slot 5



2.4.4 Slot 6

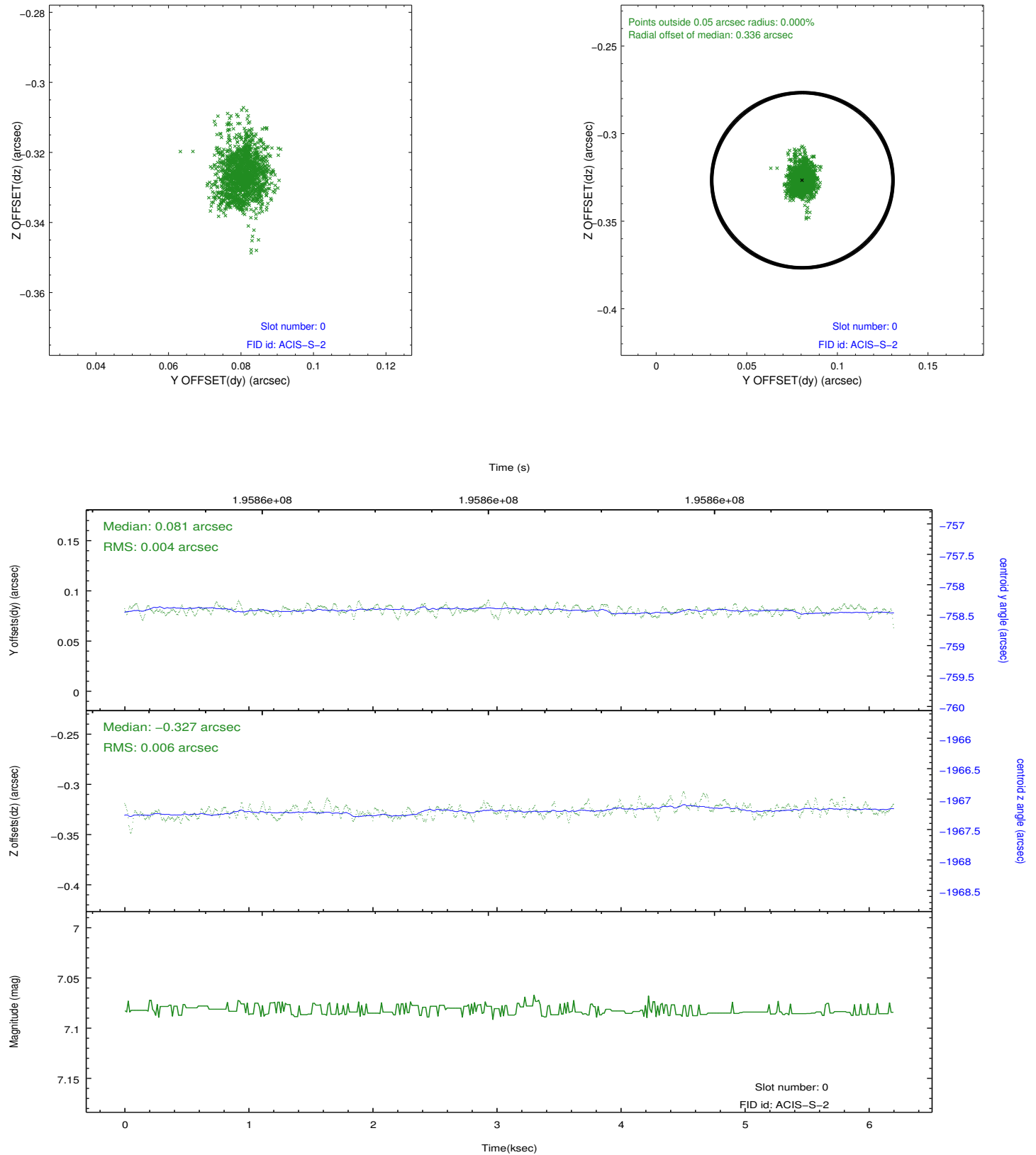


2.4.5 Slot 7

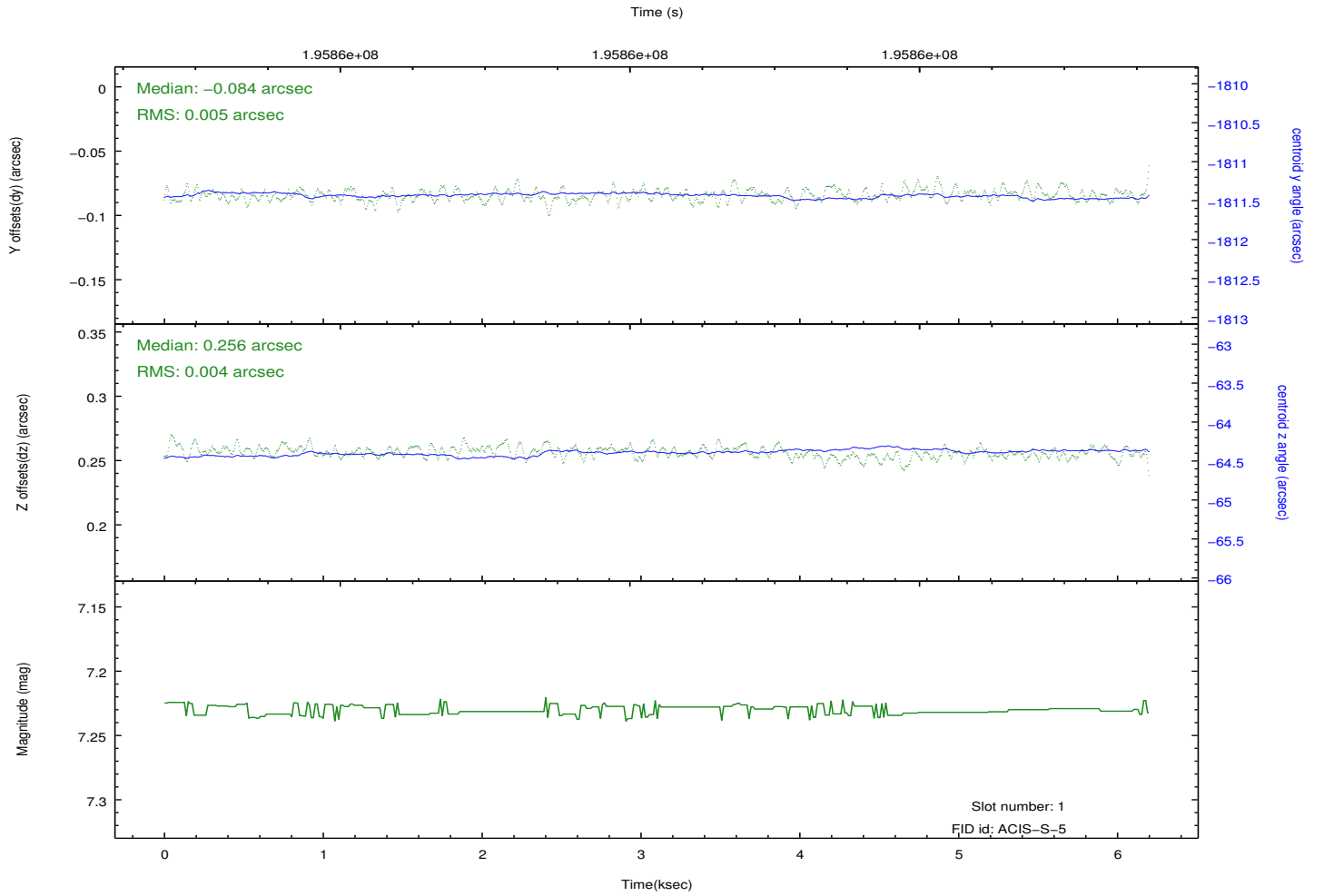
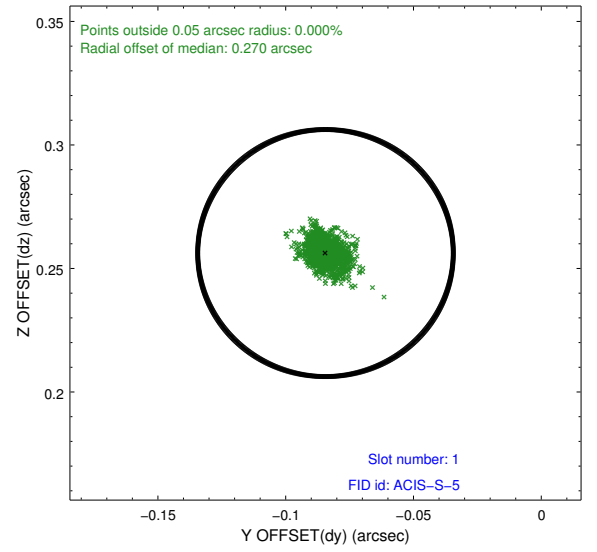
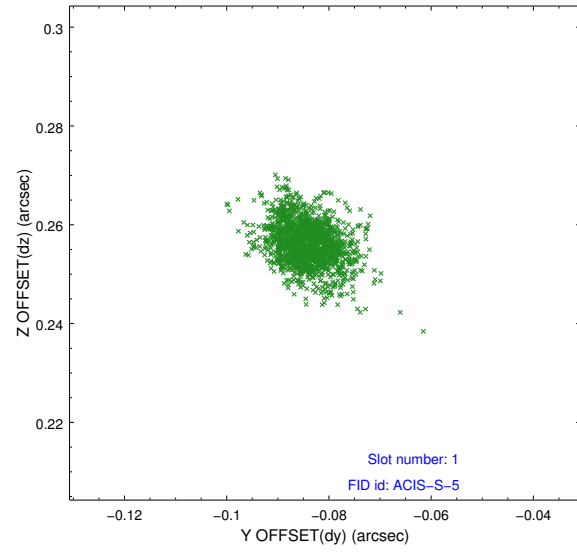


2.5 FID Slots

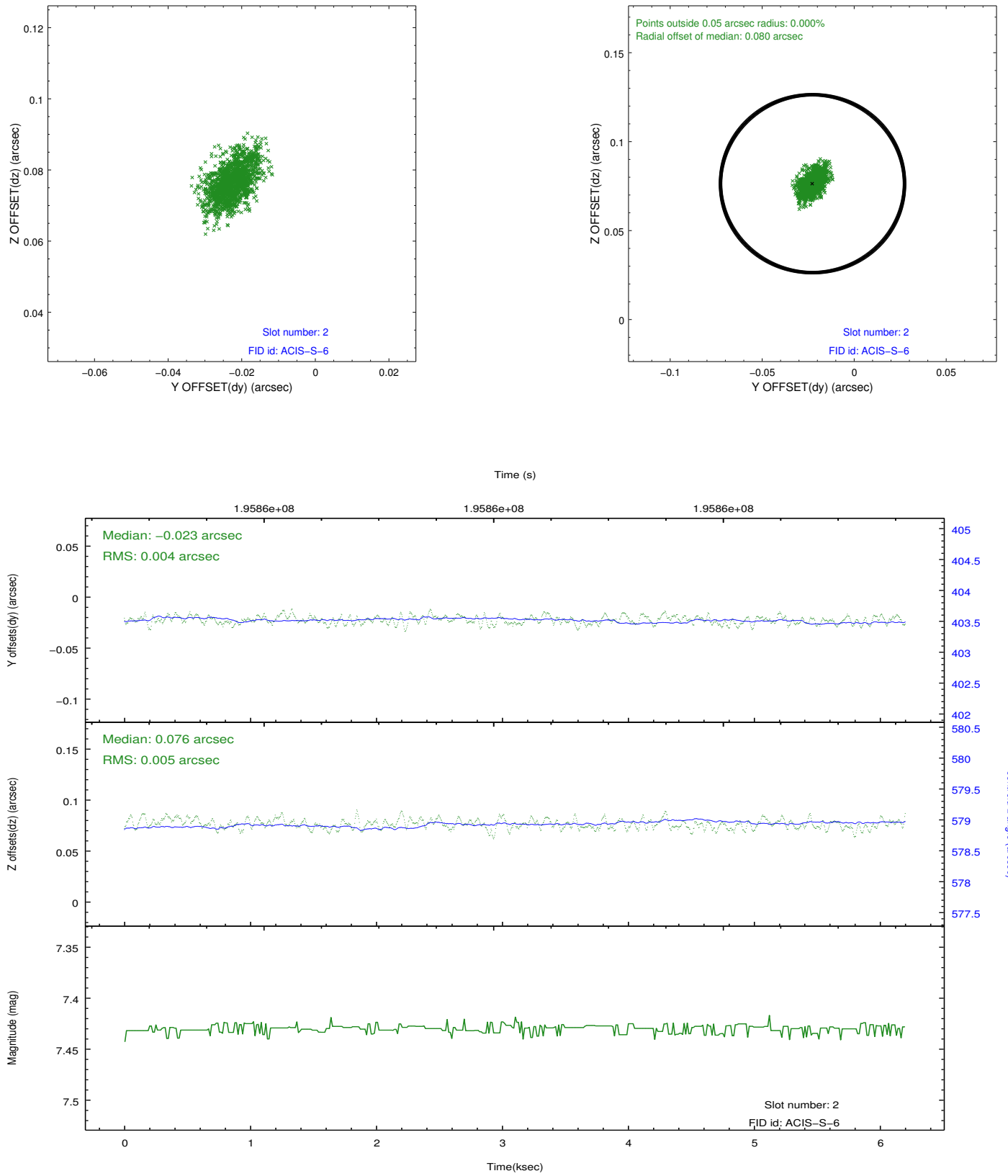
2.5.1 Slot 0



2.5.2 Slot 1



2.5.3 Slot 2



A Summary

A.1 Status

V&V Scientist	Jen Lauer
V&V Date (YYYY-MM-DD)	2012.12.12
V&V Edition	1
V&V Disposition and Status	OK
V&V Charge Time	6.2

A.2 Comments