

V&V Reference Report

L2 ASCDS Version : 7.6.7.2

Observation 4751 - L2 Version 001
Chandra X-Ray Center

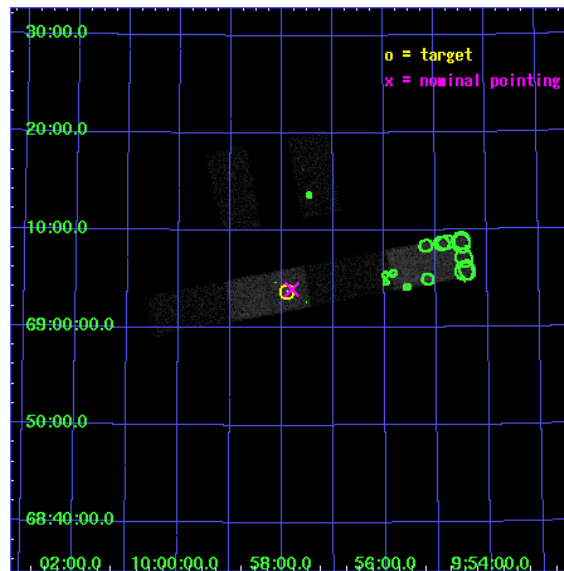
L2 Processing Date : Jun 4 2006

Contents

1	Front	2
2	OBI	3
2.1	OBI	3
2.1.1	Images	3
2.1.2	Bias	3
2.1.3	Parameters	4
2.1.4	Events	4
2.2	Compared Parameters	5
2.3	Aspect	6
2.4	Star Slots	9
2.4.1	Slot 3	9
2.4.2	Slot 4	10
2.4.3	Slot 5	11
2.4.4	Slot 6	12
2.4.5	Slot 7	13
2.5	FID Slots	14
2.5.1	Slot 0	14
2.5.2	Slot 1	15
2.5.3	Slot 2	16
3	Point Sources	17
A	Summary	18
A.1	Status	18
A.2	Comments	18

1 Front

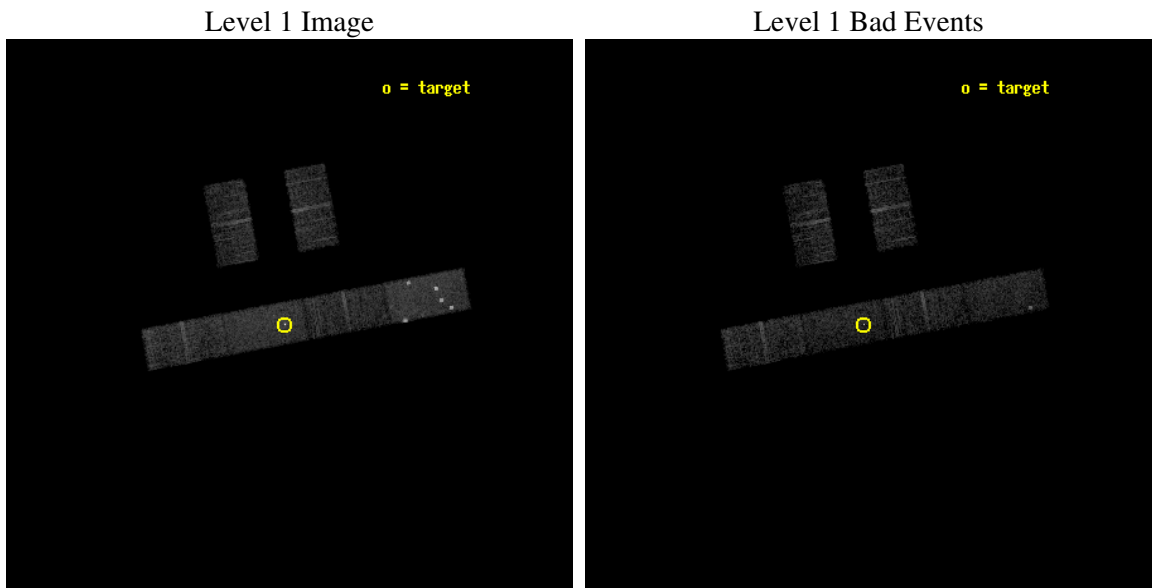
seq_num	600406
obs_id	4751
title	Observations of Intermediate Mass Black Hole Candidate Ultra-Luminous X-ray Sources
observer	Dr Jon Miller
object	M81 X-9 Obs 1
dtcycle	0
cycle	P
ra_targ	149.47625
dec_targ	69.062889
ra_nom	149.45084891376
dec_nom	69.066277642283
roll_nom	169.32666546848
revision	2
ontime	5077.8000336289
livetime	4964.6069941621
ontime2	5077.8000336289
ontime3	5077.8000336289
ontime5	5077.8000336289
ontime6	5077.8000336289
ontime7	5077.8000336289
ontime8	5077.8000336289
l2events	29768



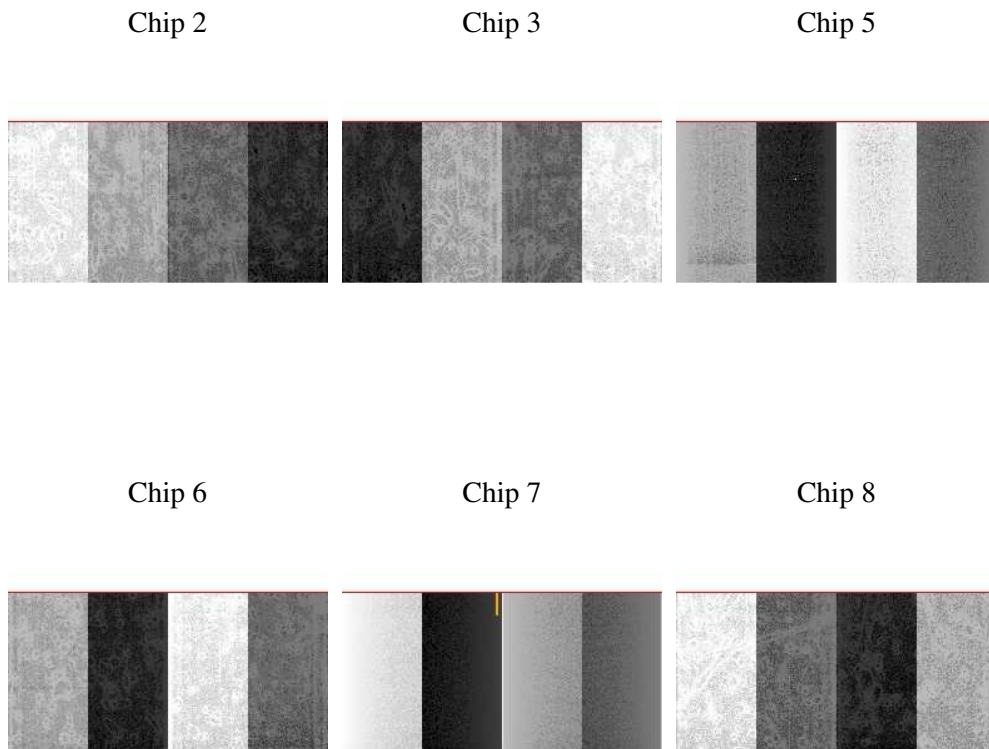
2 OBI

2.1 OBI

2.1.1 Images



2.1.2 Bias



2.1.3 Parameters

obi_num	0
ascdsver	7.6.7.2
caldsver	3.2.2
date	2006-06-04T13:02:54
revision	2

sched_exp_time	4934.000000
ontime	6760.2210555375
ontime2	6760.2210555375
ontime3	6762.0620756447
ontime5	6762.0620756447
ontime6	6762.0620955527
ontime7	6760.2210555375
ontime8	6762.0620756447
l1events	169205

2.1.4 Events

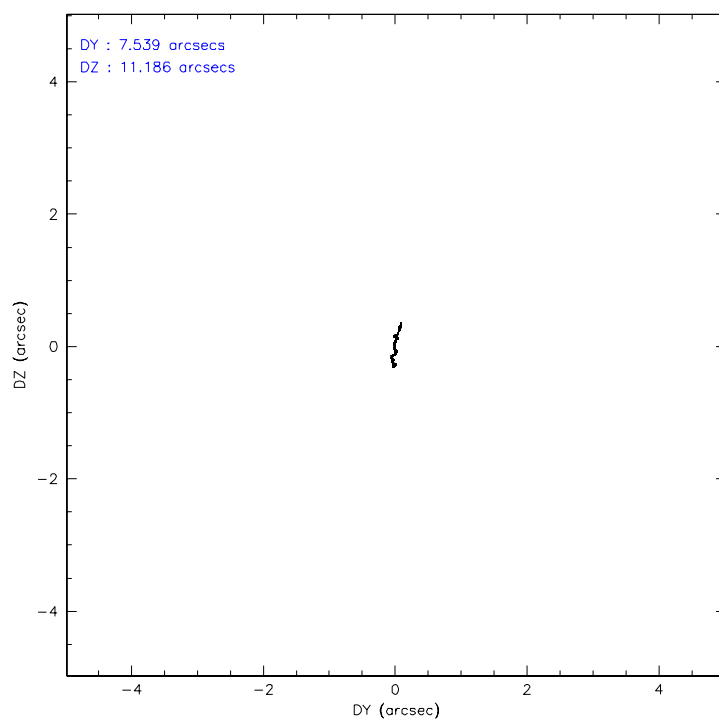
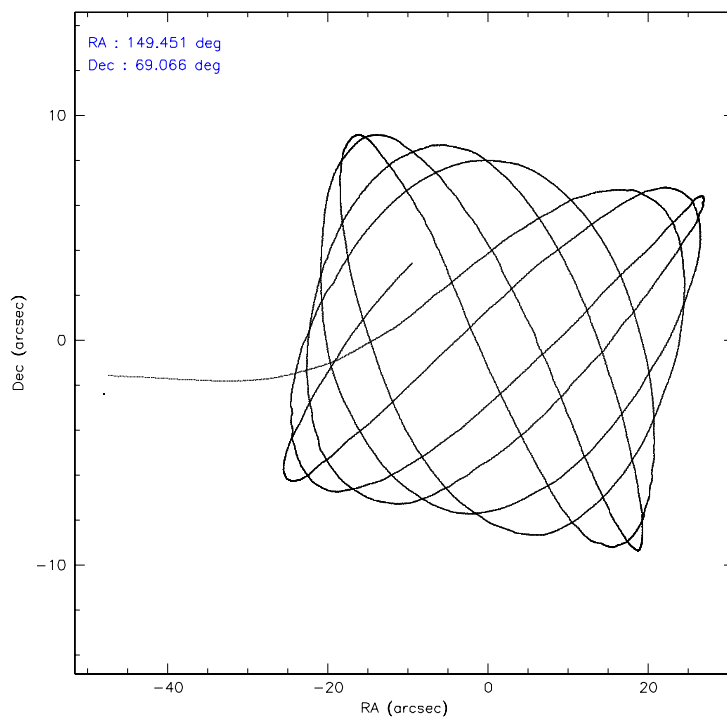
	ccd 2	ccd 3	ccd 5	ccd 6	ccd 7	ccd 8
level 1 events	23426	21350	42097	22326	32546	27460
rejected events	21290	19436	23431	20230	21603	23405
rejected %	90%	91%	55%	90%	66%	85%

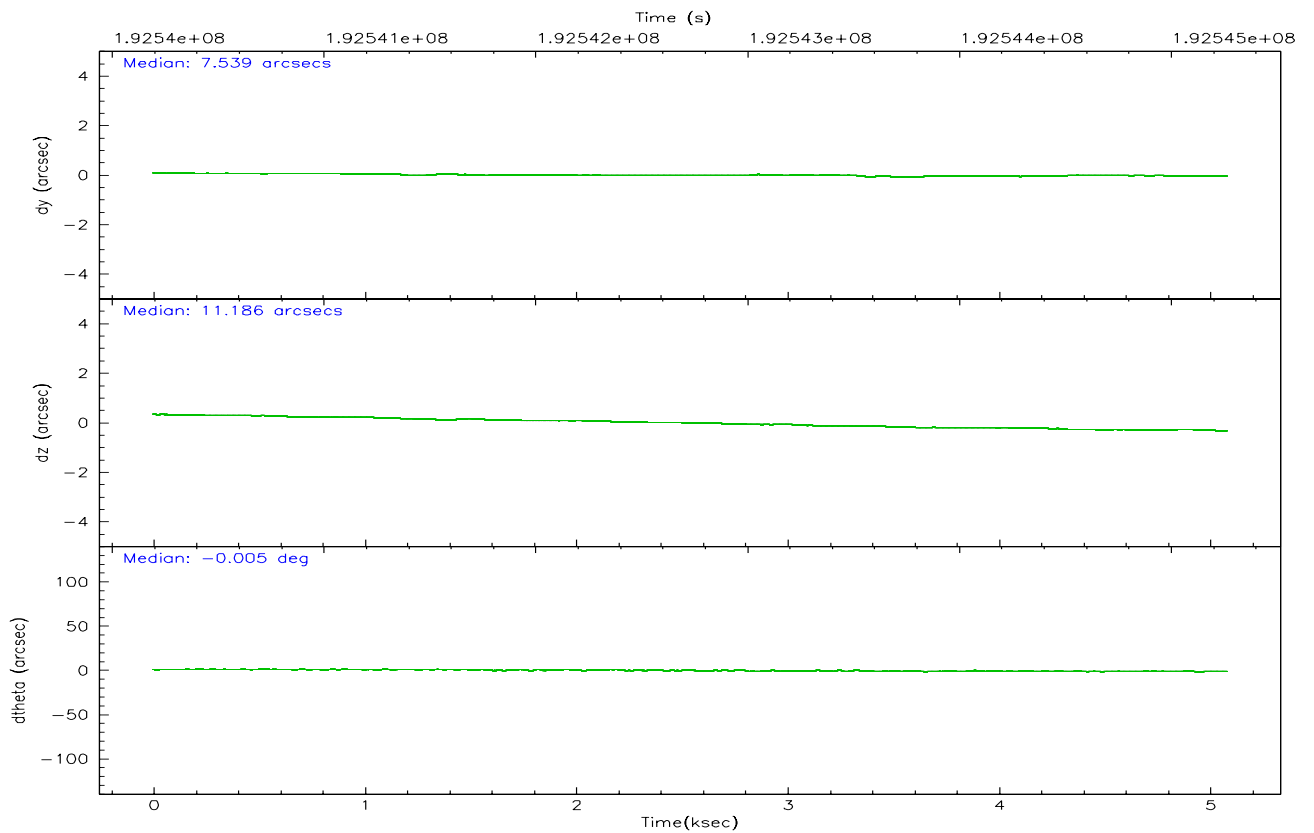
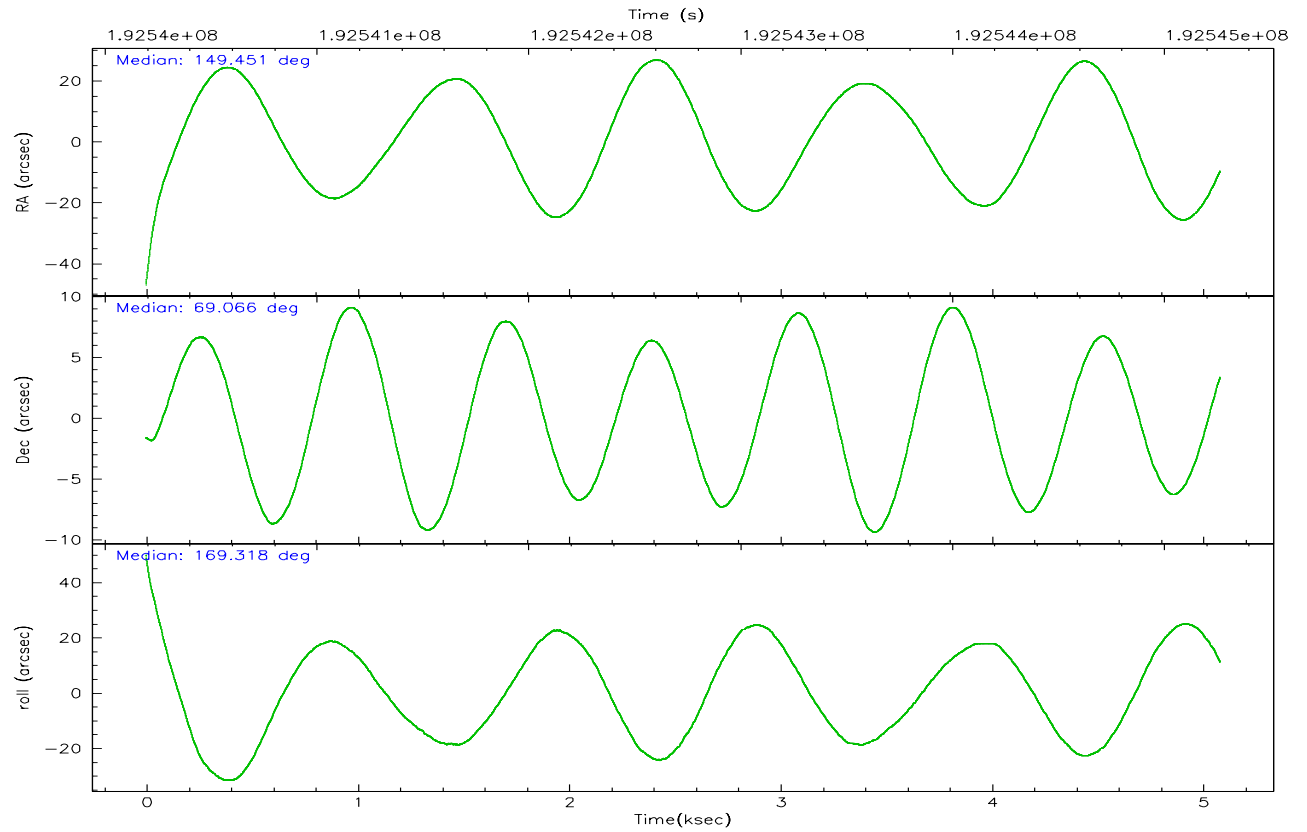
	ccd 2	ccd 3	ccd 5	ccd 6	ccd 7	ccd 8
grade 0 events	1153	1082	8247	1104	1098	1654
	4%	5%	19%	4%	3%	6%
grade 1 events	7	9	34	8	76	13
	0%	0%	0%	0%	0%	0%
grade 2 events	543	487	6329	536	3325	1198
	2%	2%	15%	2%	10%	4%
grade 3 events	327	299	621	316	941	672
	1%	1%	1%	1%	2%	2%
grade 4 events	316	276	518	288	892	639
	1%	1%	1%	1%	2%	2%
grade 5 events	821	966	1586	993	2304	1252
	3%	4%	3%	4%	7%	4%
grade 6 events	440	430	8244	524	7497	1427
	1%	2%	19%	2%	23%	5%
grade 7 events	19819	17801	16518	18557	16413	20605
	84%	83%	39%	83%	50%	75%

2.2 Compared Parameters

Parameter	Planned	Actual	Parameter	Planned	Actual
Instrument	ACIS	ACIS	Obspar format version number	6	6
Detector	ACIS-235678	ACIS-235678	Obspar file type	PREDICTED	ACTUAL
Grating	NONE	NONE	Obspar update status	NONE	UPDATED
Data mode	FAINT	FAINT	On-chip summing requested	N	N
Observation mode	POINTING	POINTING	Subarray requested	1/2	1/2
Pointing RA	149.522569	149.4508489137617	Subarray start row	0	257
Pointing Dec	69.075678	69.0662776422828	Subarray row count	1024	512
Pointing Roll	169.103054	169.3266654684836	Alternating exposures requested	N	N
SIM focus pos (mm)	-0.684267	-0.6828225247311905	Primary exposure time	0.000000	1.8
SIM defocus (mm)	0	0.001444936568705701			
SIM translation stage pos (mm)	-190.132523	-190.1425803651734			
SIM translation stage offset (mm)	0	0.01005778216563158			
Observation start time	192540336.184000	192538508.80159			
Observation start date	2004-02-07T11:24:32	2004-02-07T10:55:08			
Observation end time	192545270.184000	192546183.48942			
Observation end date	2004-02-07T12:46:46	2004-02-07T13:03:03			
Read mode	TIMED	TIMED			

2.3 Aspect



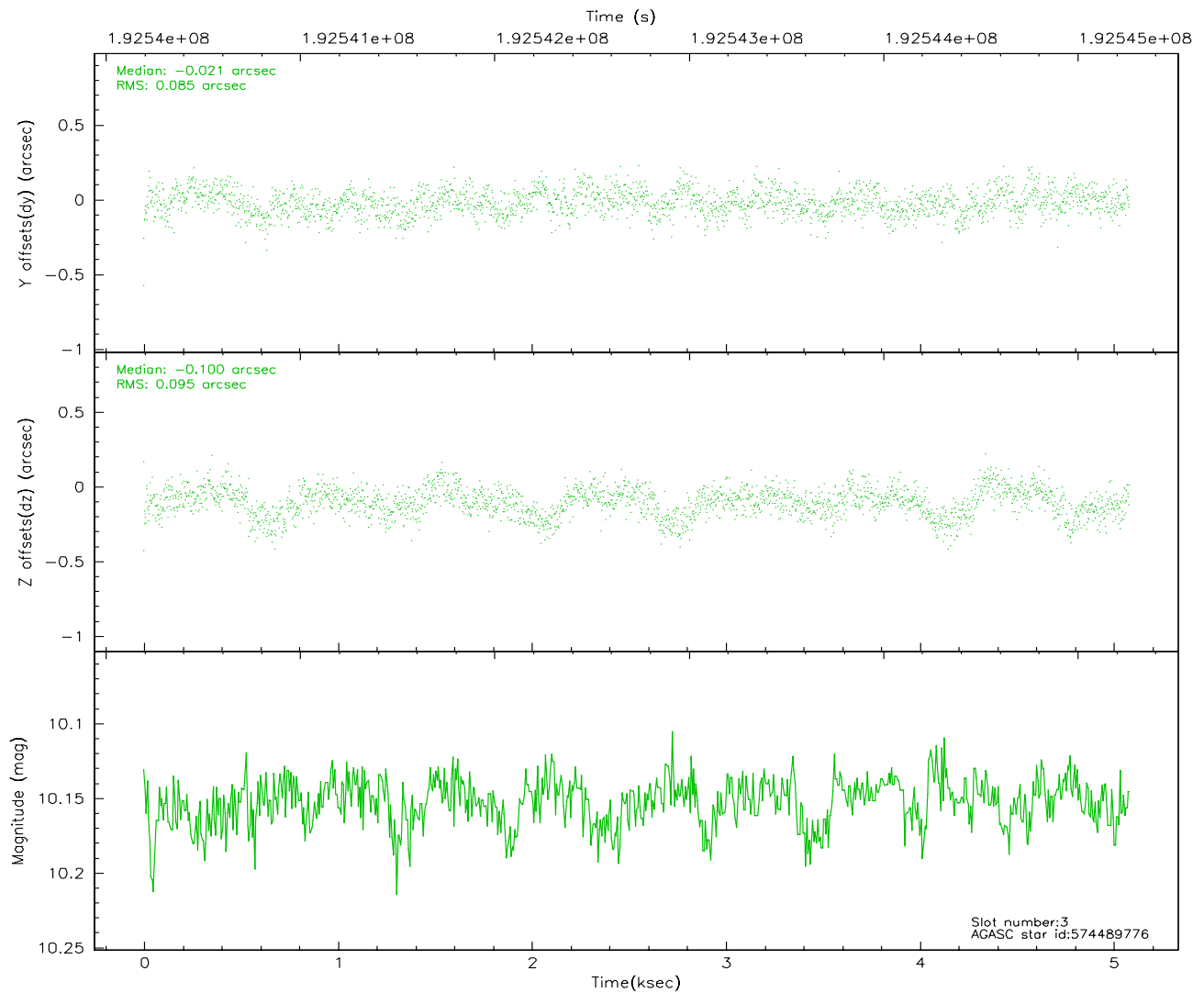
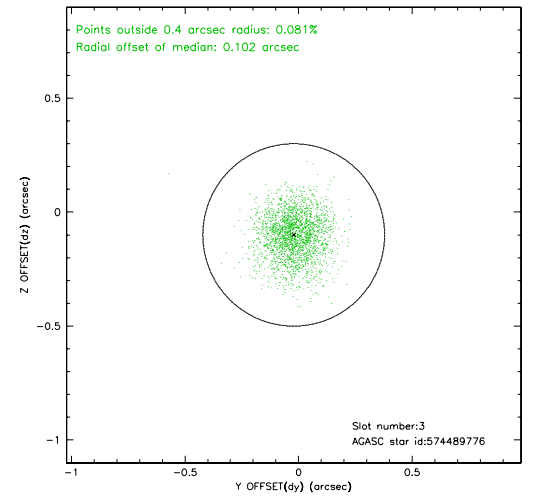
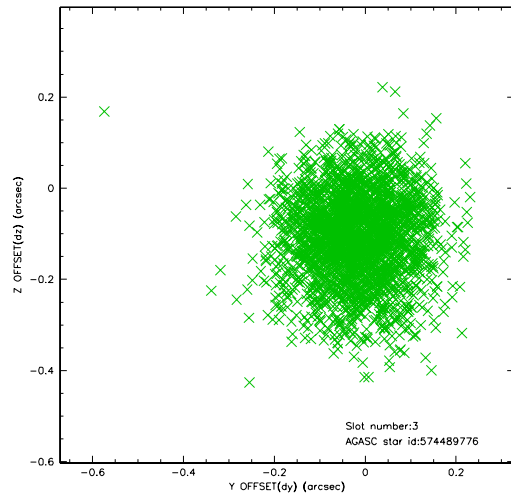


Slot Statistics

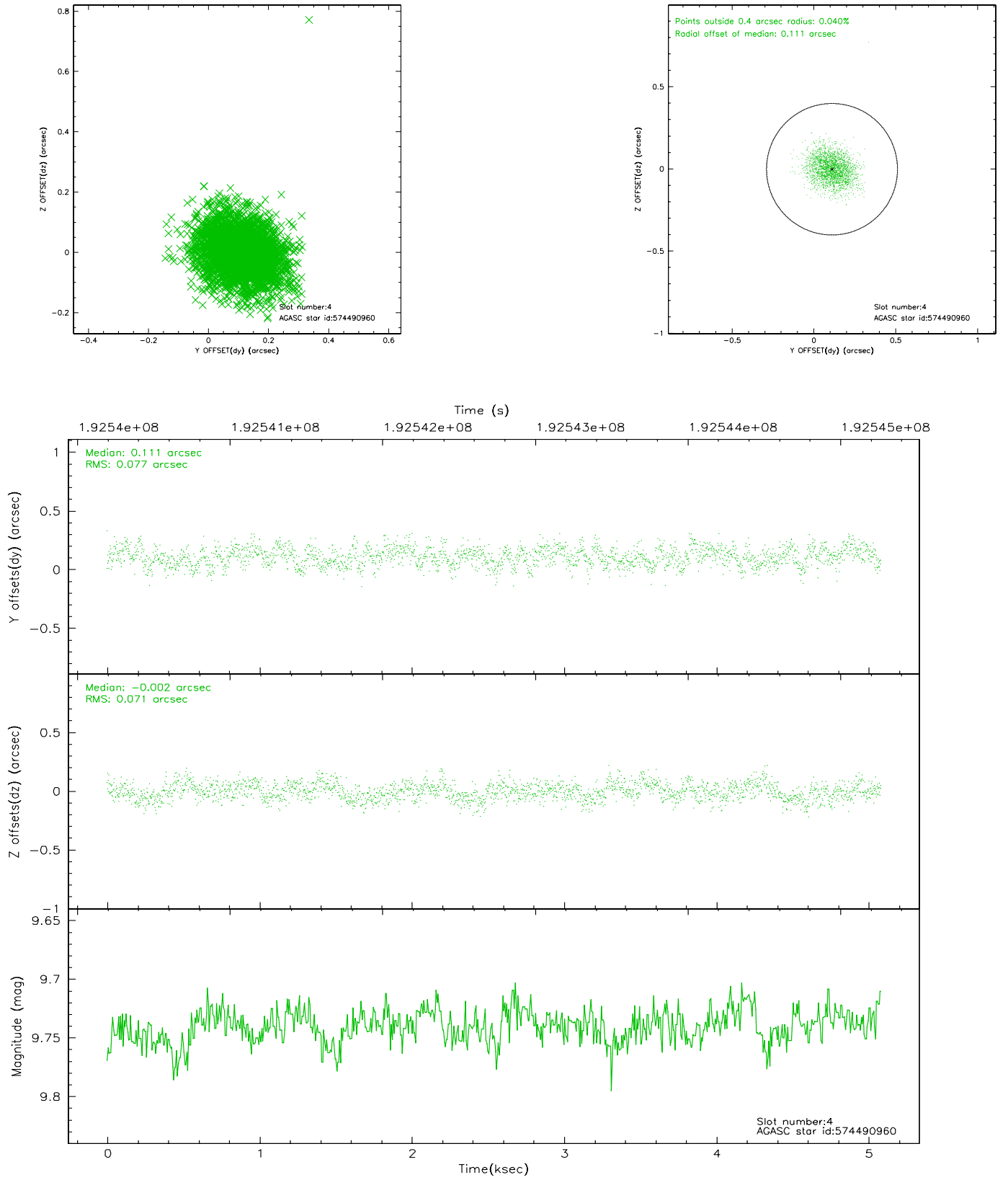
slot	status	id	mag	n_pts	med_dy	med_dz	dr1	dr2	ra	dec	mean_y	mean_z
0	FID	ACIS-S-2	7.10	1240	-0.016	0.019	0.008	0.012	0.000000	0.000000	-760.30	-1732.40
1	FID	ACIS-S-4	7.20	1240	0.018	0.003	0.006	0.011	0.000000	0.000000	2152.44	174.87
2	FID	ACIS-S-5	7.23	1241	-0.033	-0.013	0.006	0.012	0.000000	0.000000	-1811.65	169.83
3	GUIDE	574489776	10.15	2479	-0.021	-0.100	0.136	0.219	148.323662	69.046710	1498.64	379.36
4	GUIDE	574490960	9.74	2479	0.111	-0.002	0.113	0.178	148.185918	69.658768	2043.83	-1762.60
5	GUIDE	574491184	9.07	2479	-0.079	0.024	0.091	0.146	148.582453	69.768699	1623.78	-2238.08
6	GUIDE	574491280	9.34	2457	-0.004	0.076	0.090	0.150	148.611567	69.450135	1388.18	-1114.83
7	GUIDE	574496360	9.45	2480	-0.010	0.009	0.093	0.151	150.806604	68.529829	-2029.13	1591.62

2.4 Star Slots

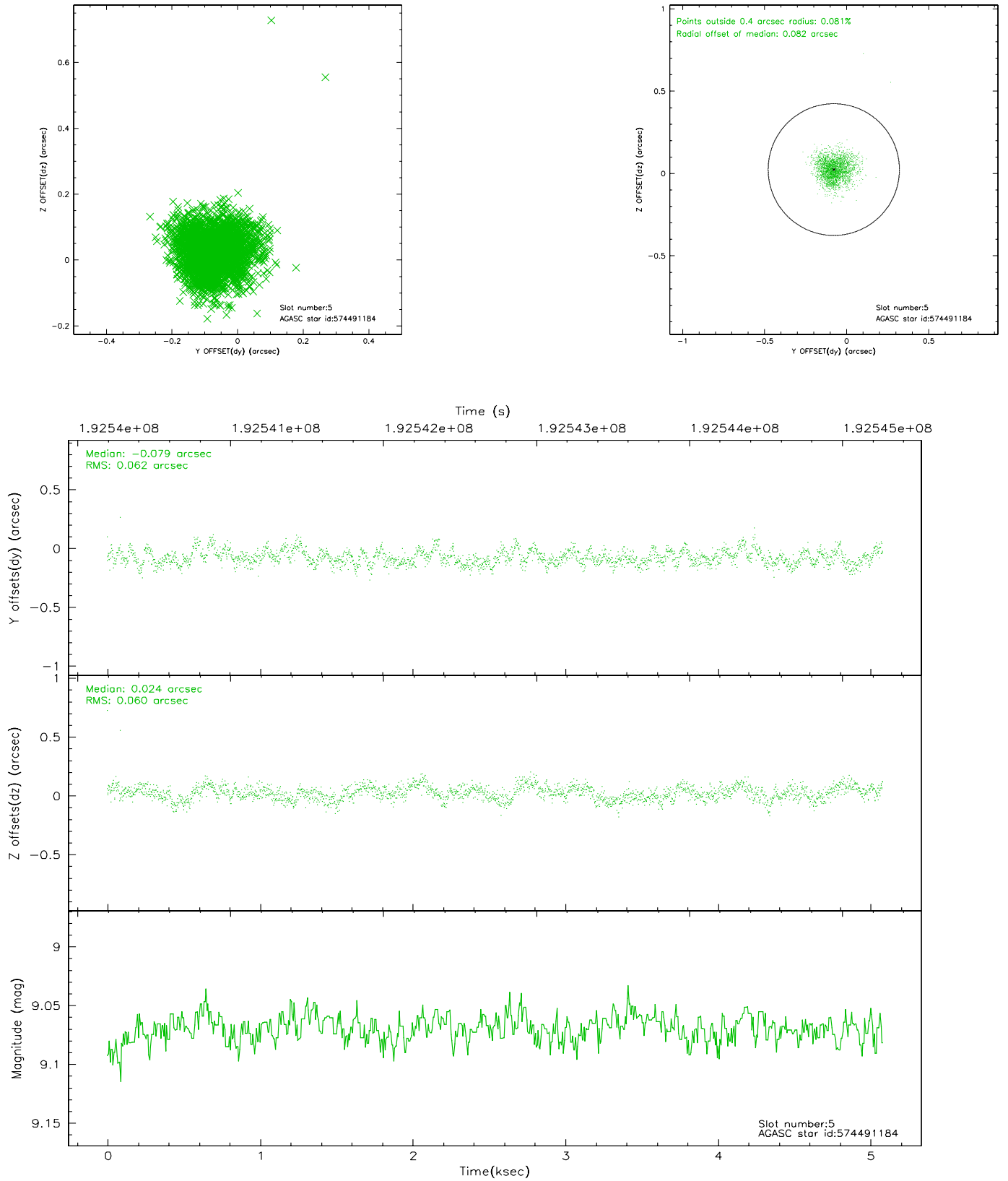
2.4.1 Slot 3



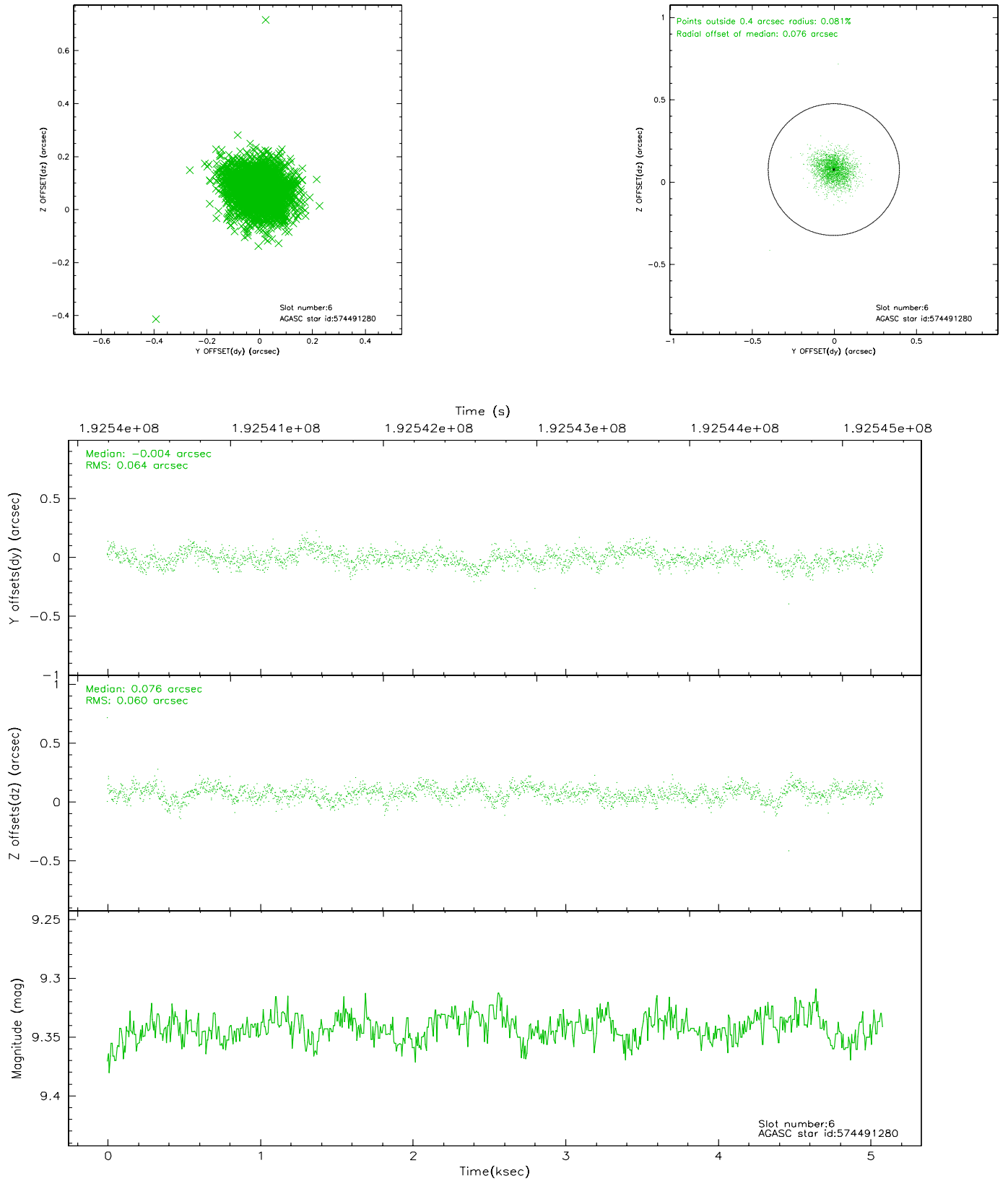
2.4.2 Slot 4



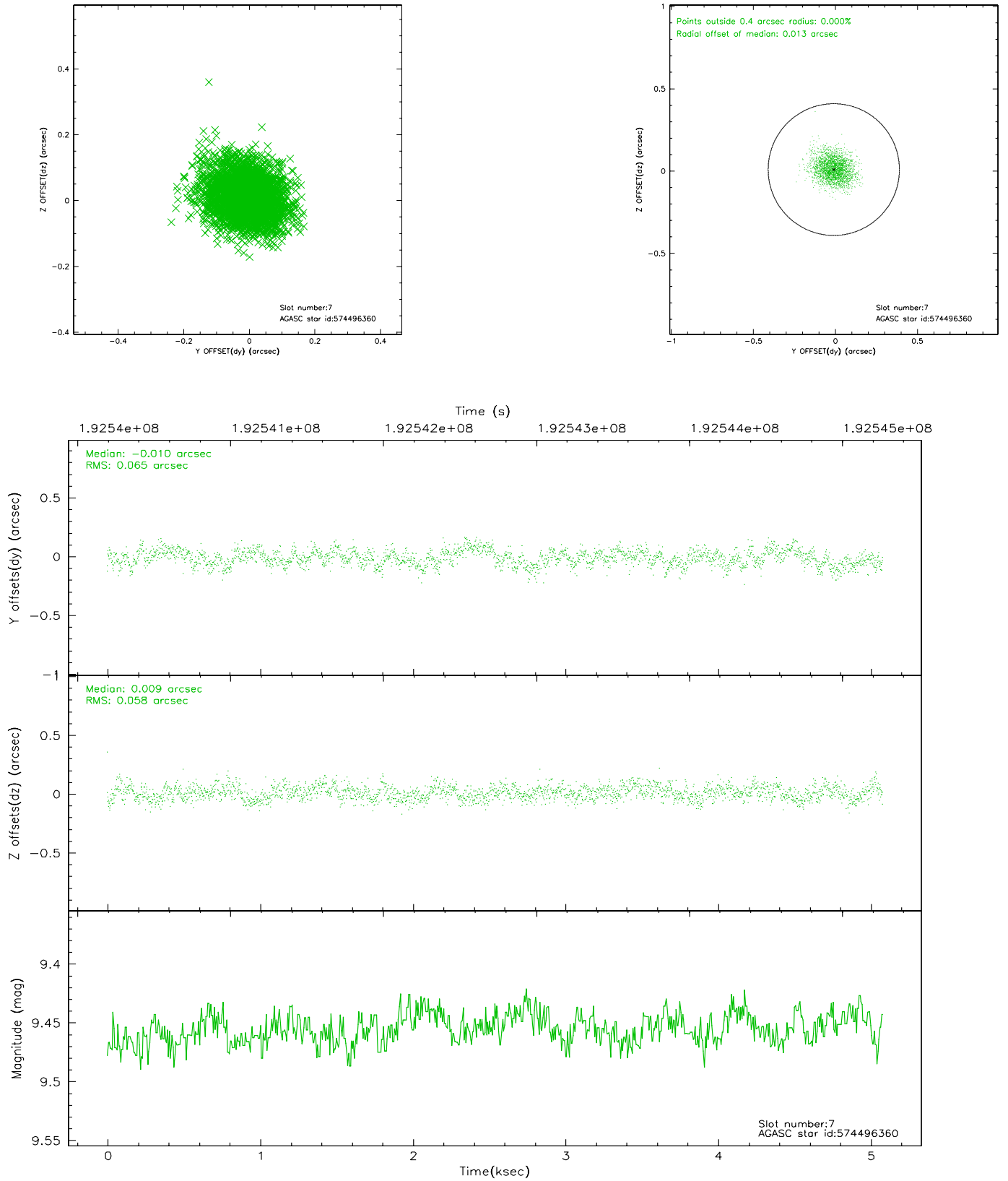
2.4.3 Slot 5



2.4.4 Slot 6

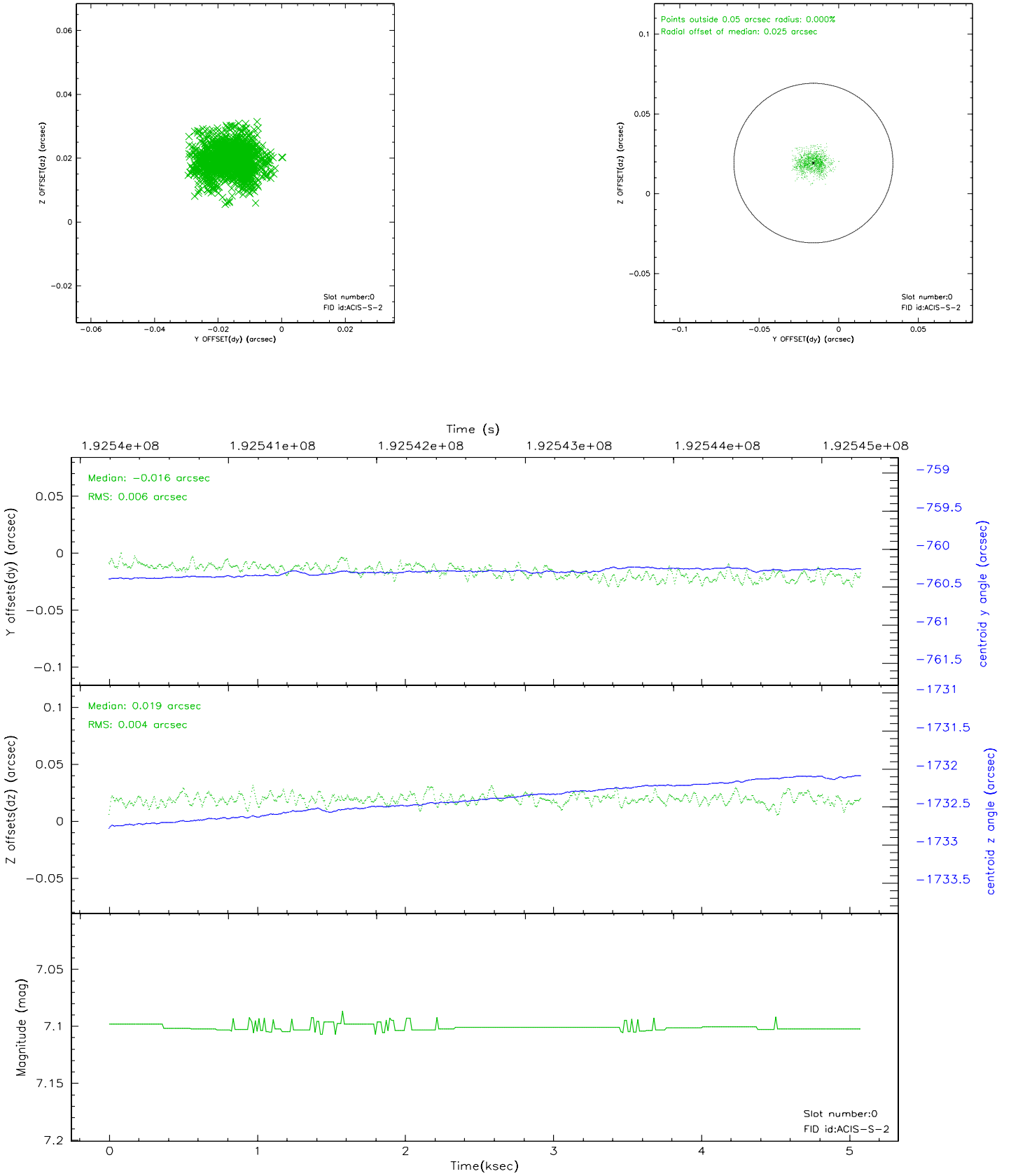


2.4.5 Slot 7

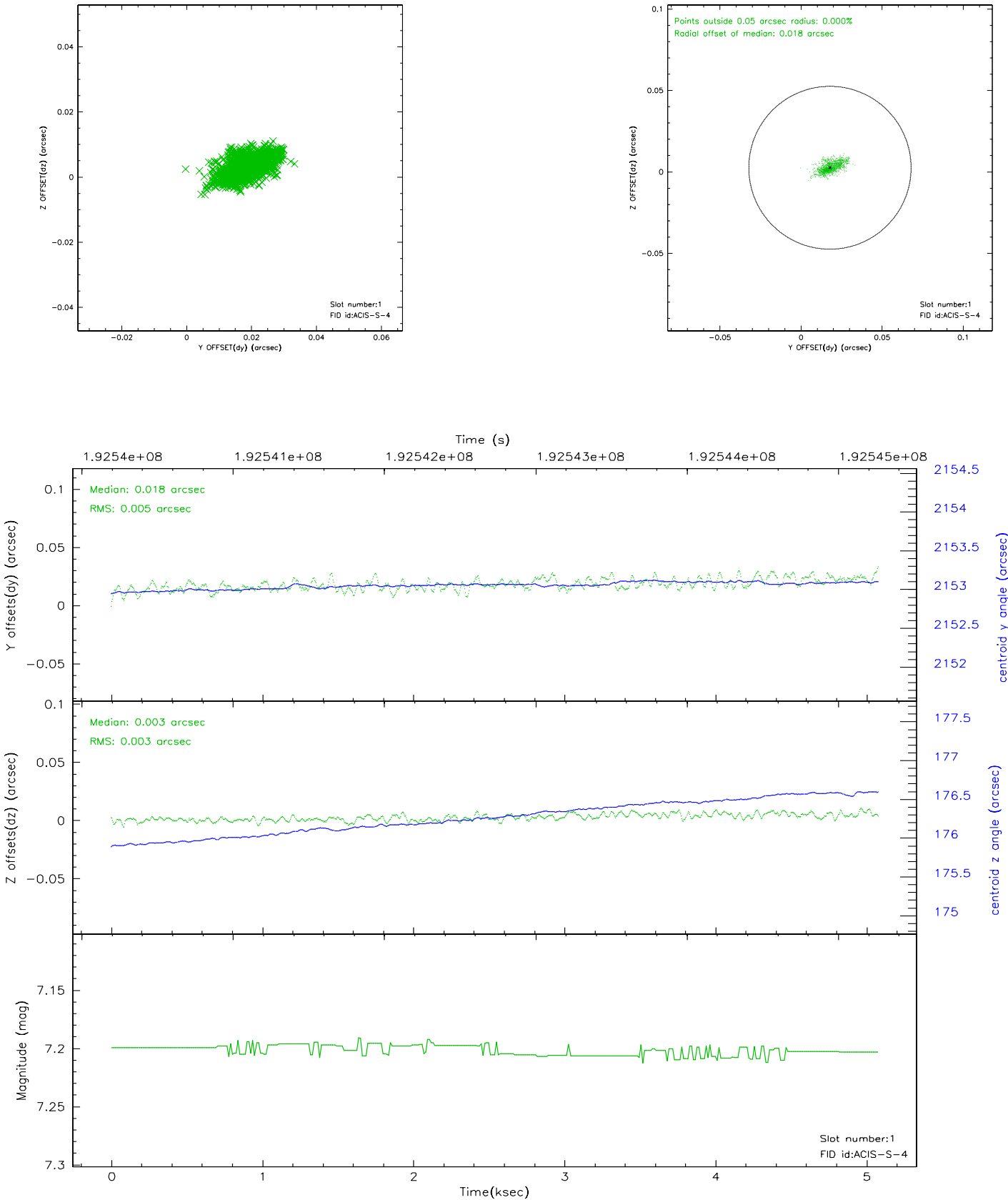


2.5 FID Slots

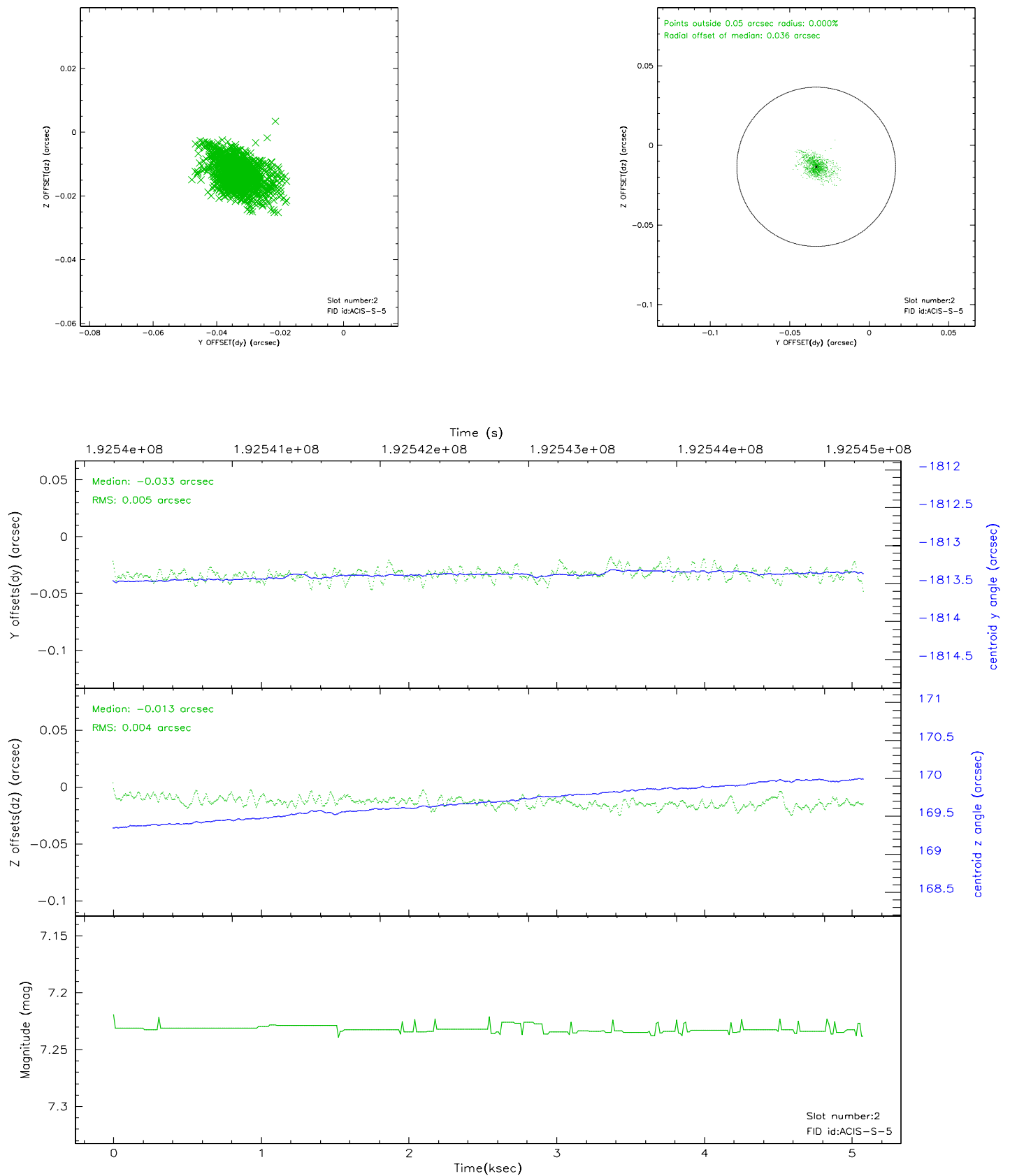
2.5.1 Slot 0



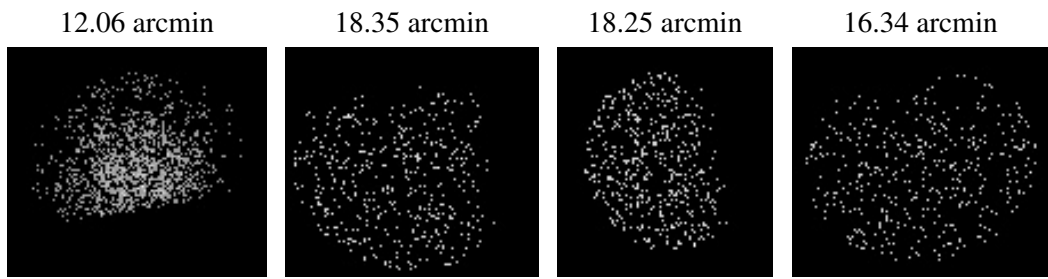
2.5.2 Slot 1



2.5.3 Slot 2



3 Point Sources



A Summary

A.1 Status

V&V Scientist	Beth Sundheim
V&V Date (YYYY-MM-DD)	2006.06.05
V&V Edition	1
V&V Disposition and Status	OK
V&V Charge Time	5.077

A.2 Comments