

V&V Reference Report

L2 ASCDS Version : 7.6.7.1

Observation 4711 - L2 Version 001
Chandra X-Ray Center

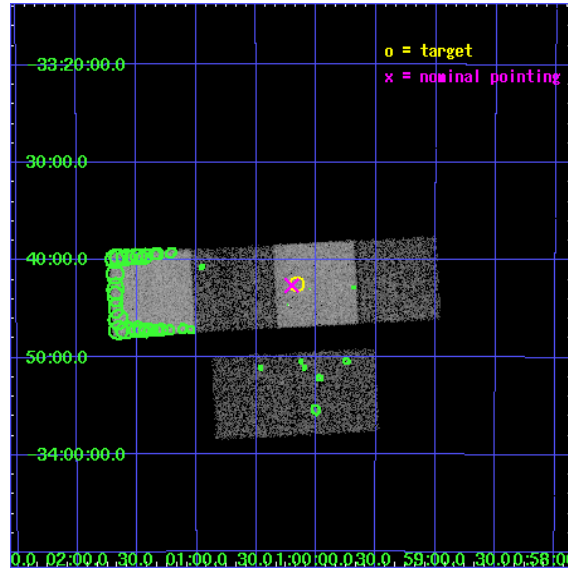
L2 Processing Date : Apr 15 2006

Contents

1	Front	2
2	OBI	3
2.1	OBI	3
2.1.1	Images	3
2.1.2	Bias	3
2.1.3	Parameters	4
2.1.4	Events	4
2.2	Compared Parameters	5
2.3	Aspect	6
2.4	Star Slots	9
2.4.1	Slot 3	9
2.4.2	Slot 4	10
2.4.3	Slot 5	11
2.4.4	Slot 6	12
2.4.5	Slot 7	13
2.5	FID Slots	14
2.5.1	Slot 0	14
2.5.2	Slot 1	15
2.5.3	Slot 2	16
3	Point Sources	17
A	Summary	18
A.1	Status	18
A.2	Comments	18

1 Front

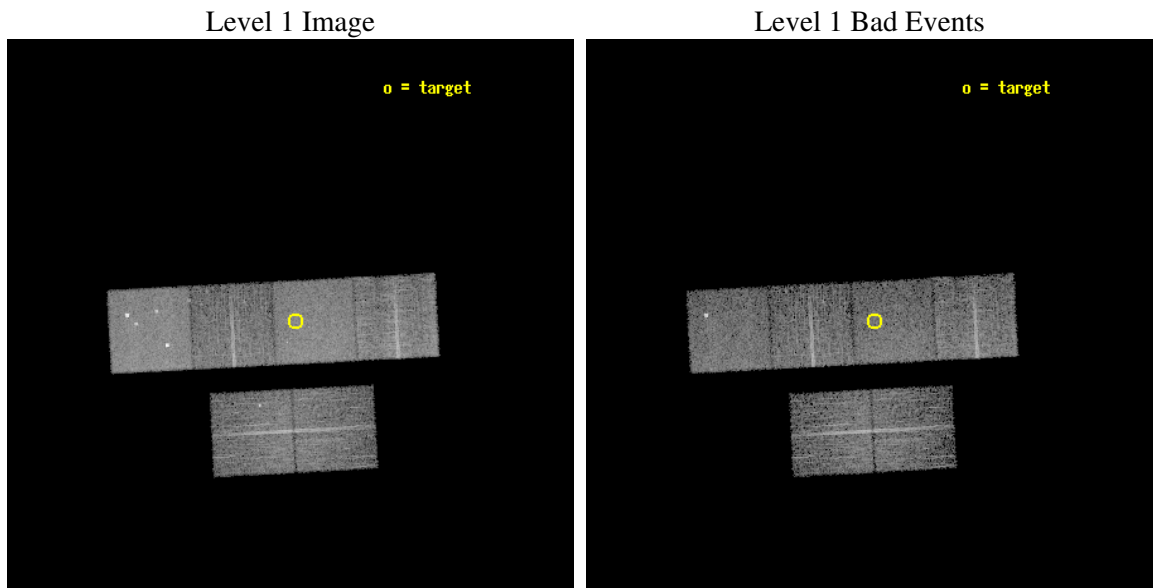
seq_num	600366
obs_id	4711
title	Using the Sculptor Dwarf Spheroidal Galaxy to Constrain X-ray Binary Production in Population II
observer	Dr. Thomas Maccarone
object	SCULPTOR DWARF SPHEROIDAL
dtcycle	0
cycle	P
ra_targ	15.039167
dec_targ	-33.708889
ra_nom	15.05050956222
dec_nom	-33.711042574531
roll_nom	356.99432045628
revision	2
ontime	5955.1999778152
livetime	5879.7916499051
ontime2	5955.1999778152
ontime3	5955.1999778152
ontime5	5955.1999778152
ontime6	5955.1999778152
ontime7	5955.1999778152
ontime8	5955.1999778152
l2events	72383



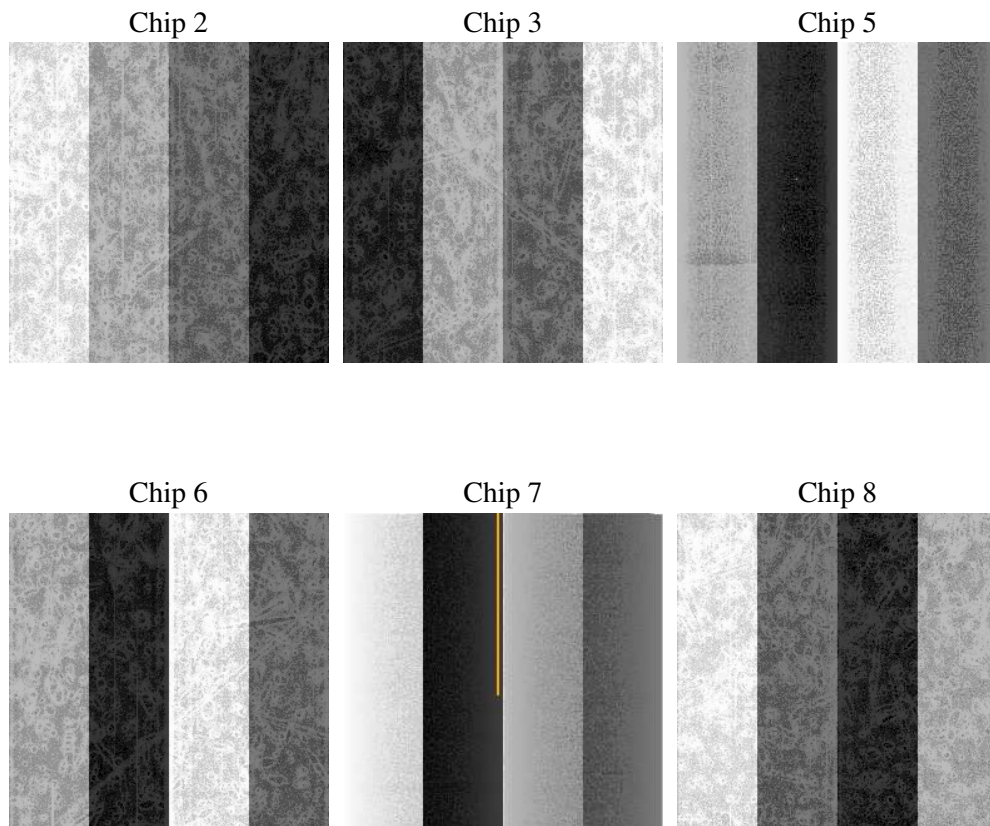
2 OBI

2.1 OBI

2.1.1 Images



2.1.2 Bias



2.1.3 Parameters

obi_num	0
ascdsver	7.6.7.1
caldbver	3.2.1
date	2006-04-15T03:07:09
revision	2

sched_exp_time	6000.000000
ontime	5960.2125567496
ontime2	5960.2125567496
ontime3	5960.2125368118
ontime5	5960.2125567496
ontime6	5960.2125567496
ontime7	5960.2125567496
ontime8	5960.2125368118
l1events	332813

2.1.4 Events

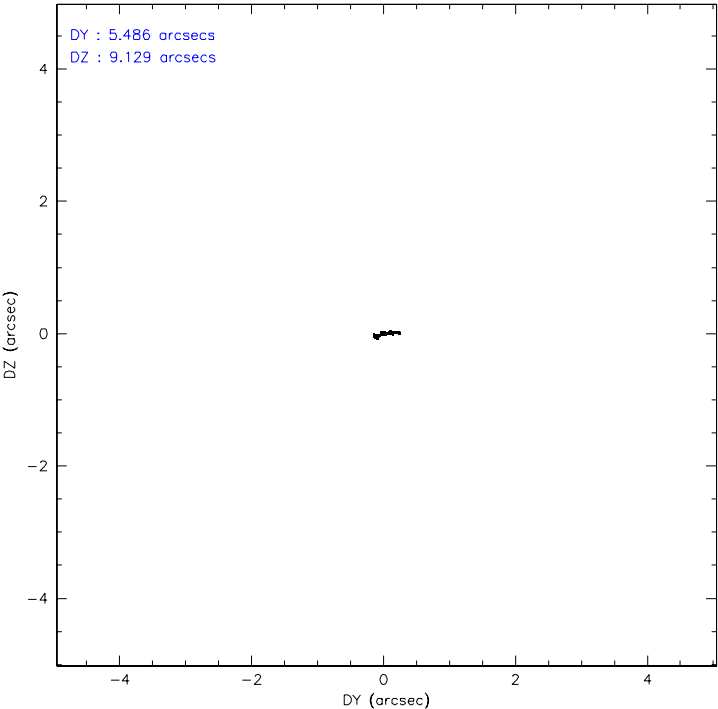
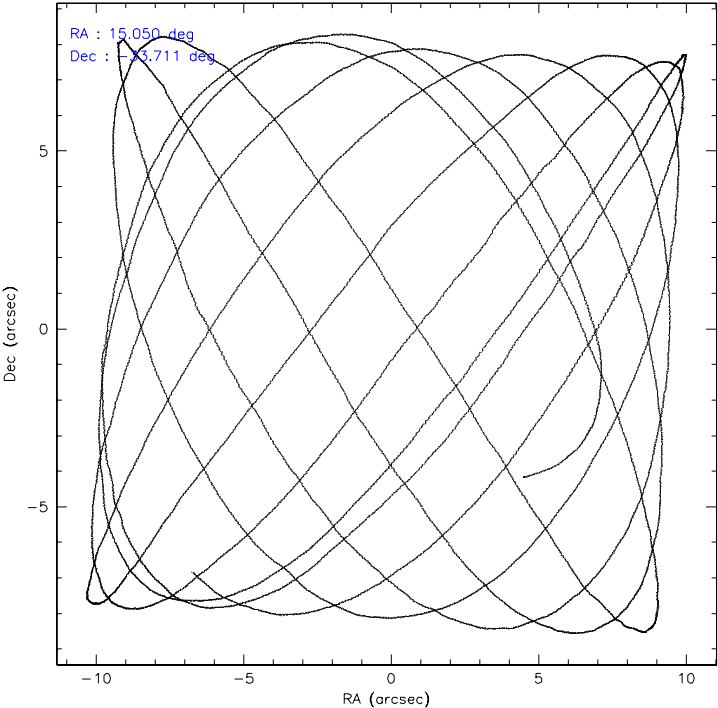
	ccd 2	ccd 3	ccd 5	ccd 6	ccd 7	ccd 8
level 1 events	47777	43789	72923	46590	62854	58880
rejected events	41980	38394	39955	40936	39065	46056
rejected %	87%	87%	54%	87%	62%	78%

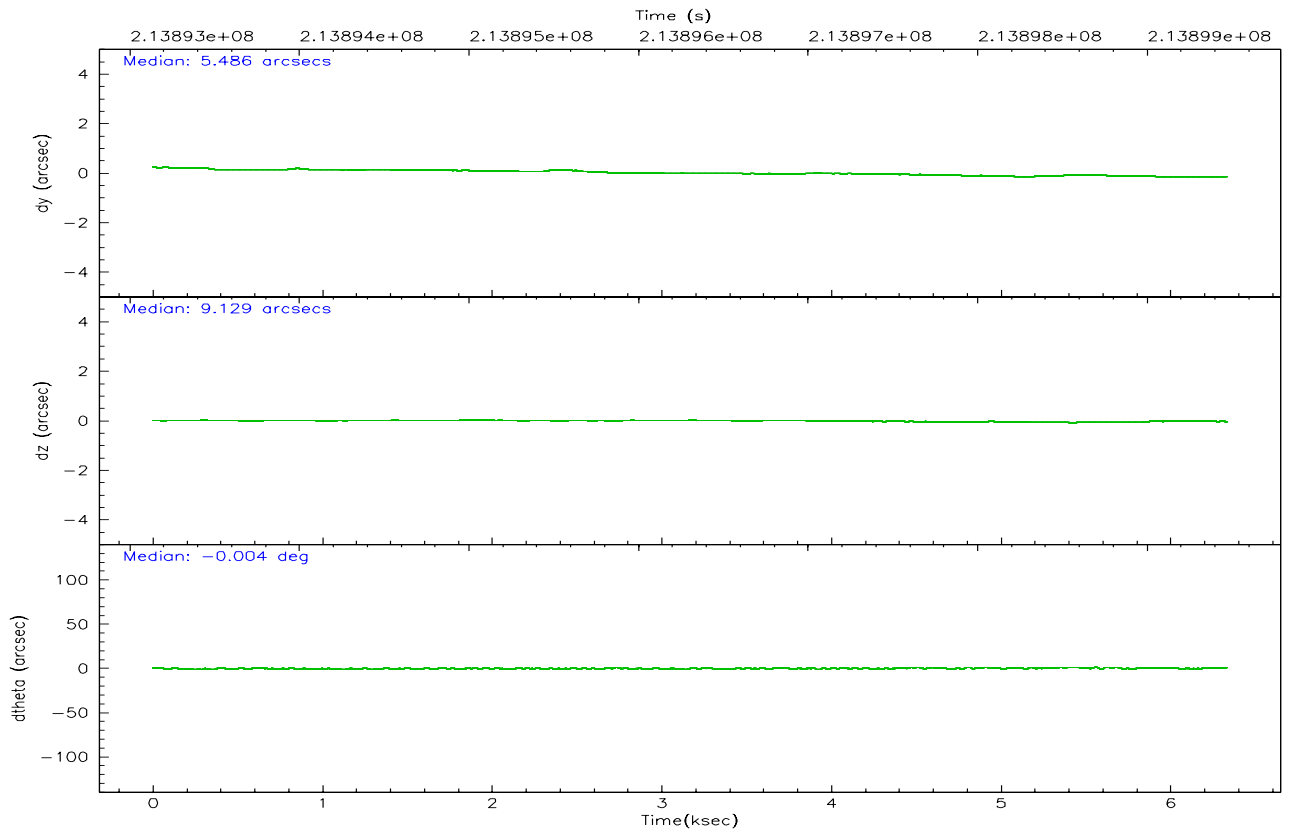
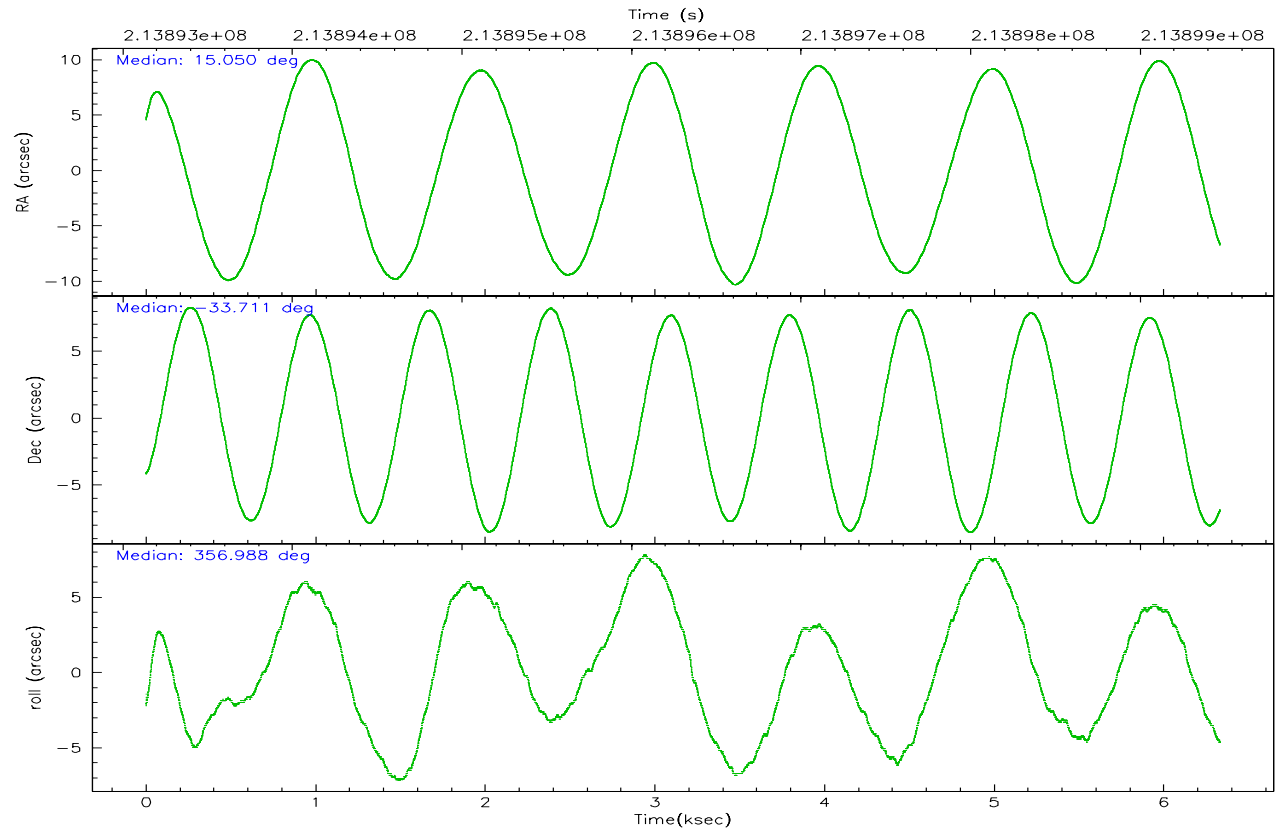
	ccd 2	ccd 3	ccd 5	ccd 6	ccd 7	ccd 8
grade 0 events	2685	2461	4013	2218	1277	4168
	5%	5%	5%	4%	2%	7%
grade 1 events	30	23	73	25	40	27
	0%	0%	0%	0%	0%	0%
grade 2 events	1136	974	9948	1250	5864	2813
	2%	2%	13%	2%	9%	4%
grade 3 events	528	509	680	571	1220	1347
	1%	1%	0%	1%	1%	2%
grade 4 events	539	491	637	523	1145	1282
	1%	1%	0%	1%	1%	2%
grade 5 events	1806	1979	3301	2188	4178	2731
	3%	4%	4%	4%	6%	4%
grade 6 events	919	965	17719	1097	14303	3220
	1%	2%	24%	2%	22%	5%
grade 7 events	40134	36387	36552	38718	34827	43292
	84%	83%	50%	83%	55%	73%

2.2 Compared Parameters

Parameter	Planned	Actual	Parameter	Planned	Actual
Instrument	ACIS	ACIS	Obspar format version number	6	6
Detector	ACIS-235678	ACIS-235678	Obspar file type	PREDICTED	ACTUAL
Grating	NONE	NONE	Obspar update status	NONE	UPDATED
Data mode	VFAINT	VFAINT	On-chip summing requested	N	N
Observation mode	POINTING	POINTING	Subarray requested	NONE	NONE
Pointing RA	15.021515	15.05050956222012	Alternating exposures requested	N	N
Pointing Dec	-33.723765	-33.71104257453075	Primary exposure time	0.000000	3.2
Pointing Roll	356.821604	356.9943204562758			
SIM focus pos (mm)	-0.684267	-0.6828225247311905			
SIM defocus (mm)	0	0.001444936568705701			
SIM translation stage pos (mm)	-190.132523	-190.1400660498719			
SIM translation stage offset (mm)	0	0.00754346686406393			
Observation start time	213893469.184000	213892431.60874			
Observation start date	2004-10-11T14:50:05	2004-10-11T14:33:51			
Observation end time	213899469.184000	213900797.65911			
Observation end date	2004-10-11T16:30:05	2004-10-11T16:53:17			
Read mode	TIMED	TIMED			

2.3 Aspect



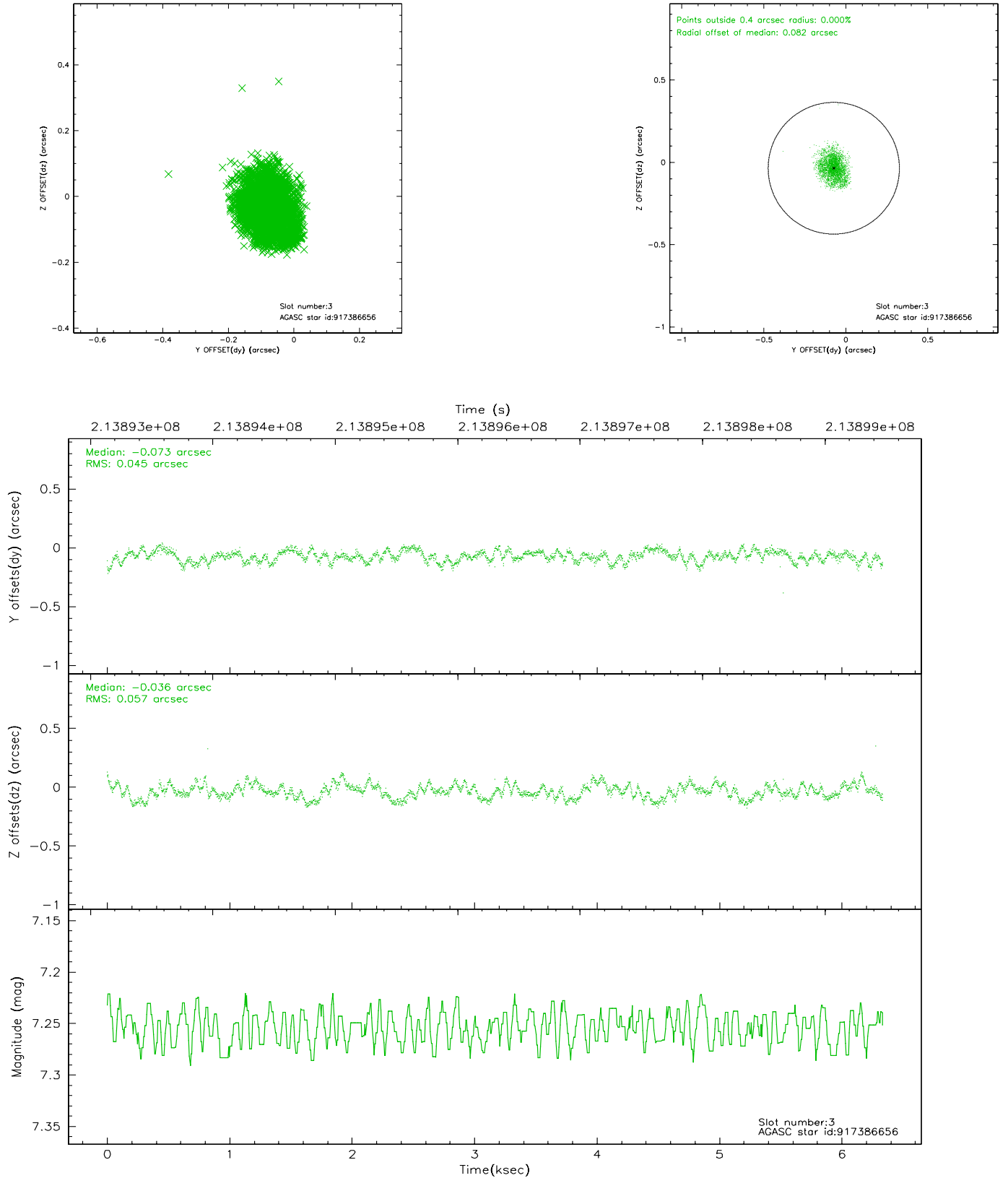


Slot Statistics

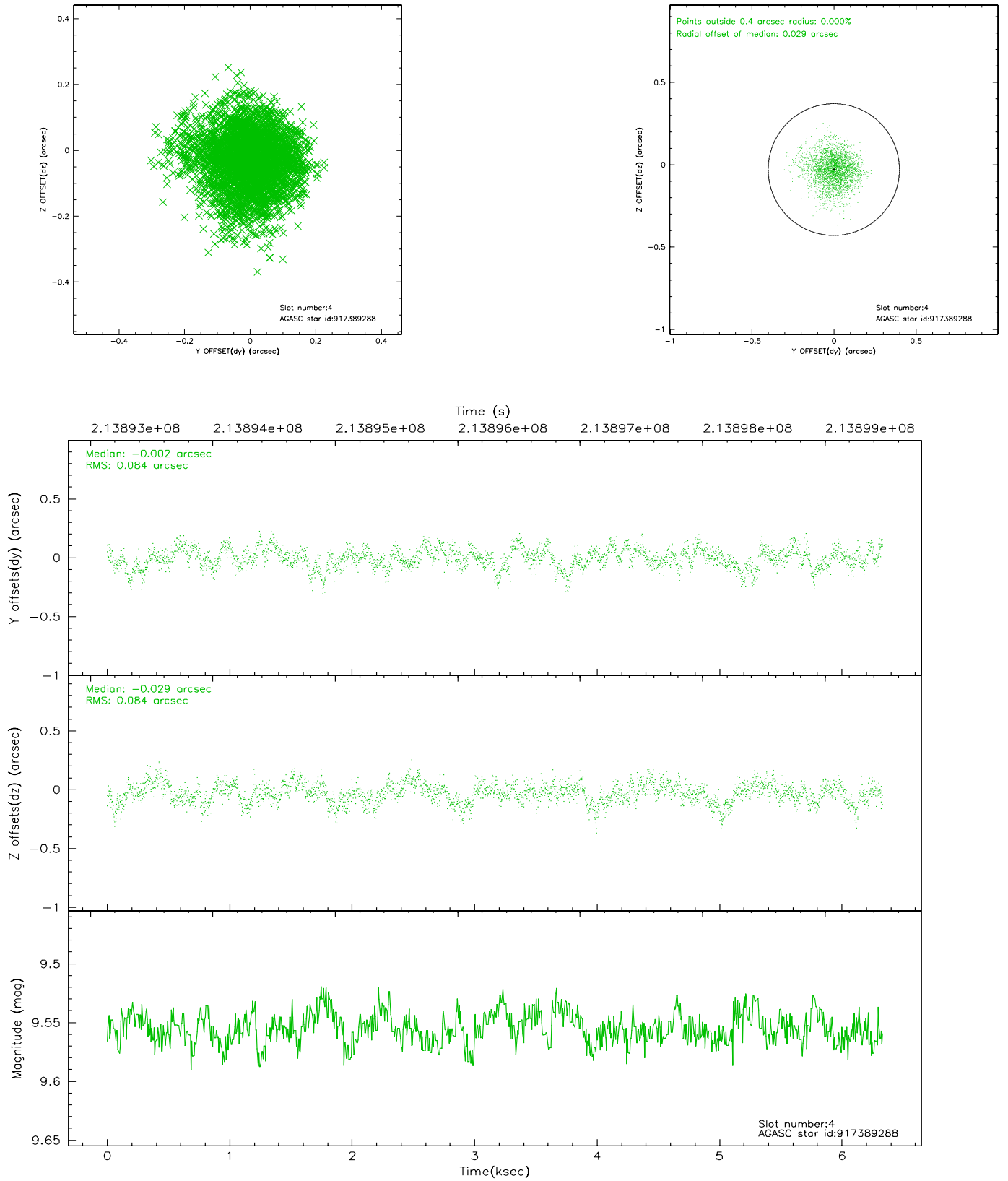
slot	status	id	mag	n_pts	med_dy	med_dz	dr1	dr2	ra	dec	mean_y	mean_z
0	FID	ACIS-S-1	7.18	1545	-0.001	0.031	0.006	0.010	0.000000	0.000000	937.78	-1725.96
1	FID	ACIS-S-5	7.23	1545	-0.059	0.003	0.006	0.010	0.000000	0.000000	-1810.71	170.67
2	FID	ACIS-S-6	7.36	1545	0.038	-0.021	0.007	0.012	0.000000	0.000000	402.43	815.61
3	GUIDE	917386656	7.25	3091	-0.073	-0.036	0.078	0.121	15.342124	-33.359890	889.85	1359.93
4	GUIDE	917389288	9.55	3089	-0.002	-0.029	0.127	0.204	15.394706	-33.185862	1015.48	1994.12
5	GUIDE	917390768	9.87	3088	0.005	-0.019	0.156	0.245	14.870561	-33.104152	-578.10	2202.07
6	GUIDE	917642024	8.90	3090	0.054	-0.003	0.097	0.152	15.645887	-34.369984	1982.47	-2224.66
7	GUIDE	917650528	8.71	3085	0.020	0.083	0.081	0.128	14.274554	-33.869842	-2198.94	-657.95

2.4 Star Slots

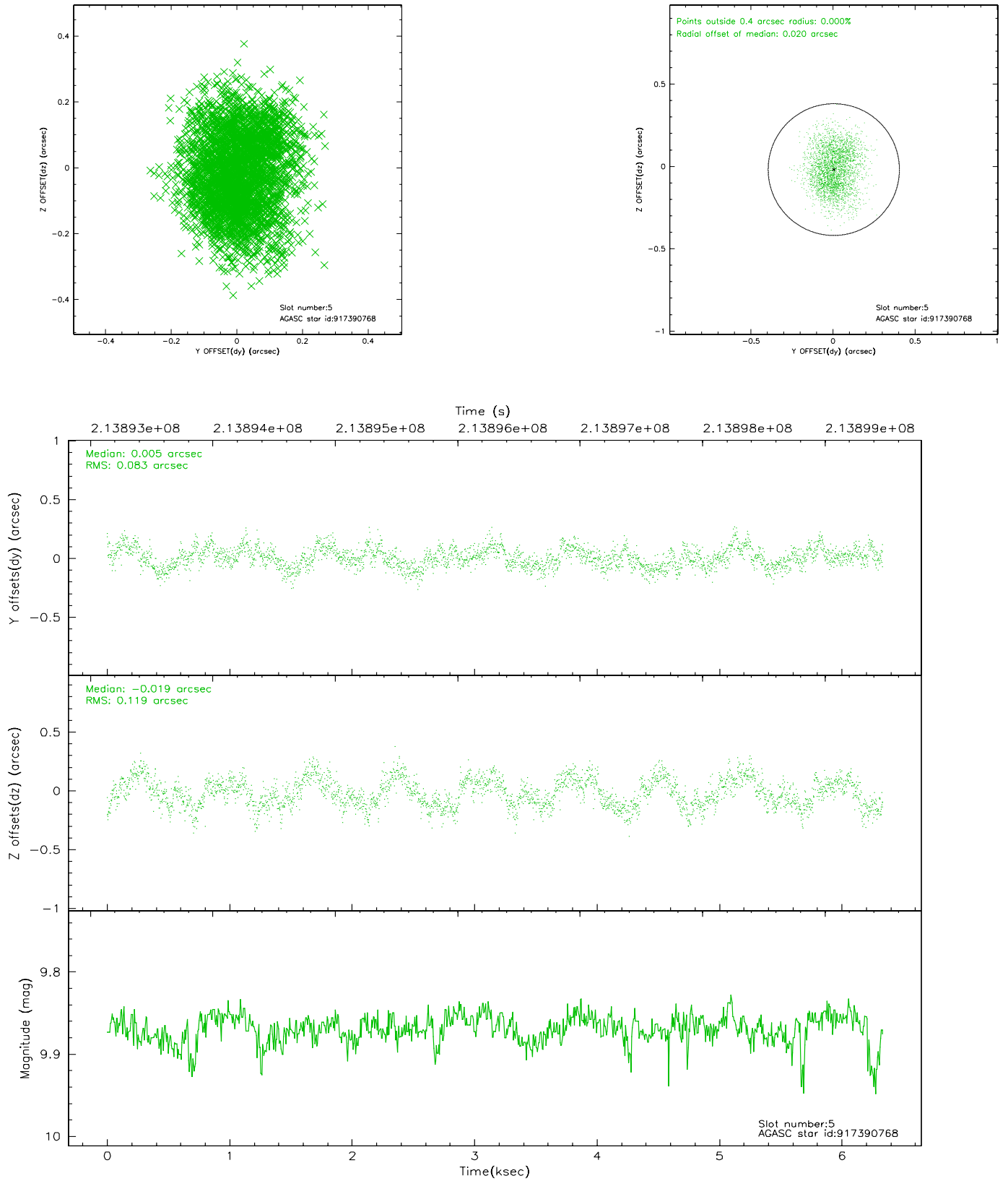
2.4.1 Slot 3



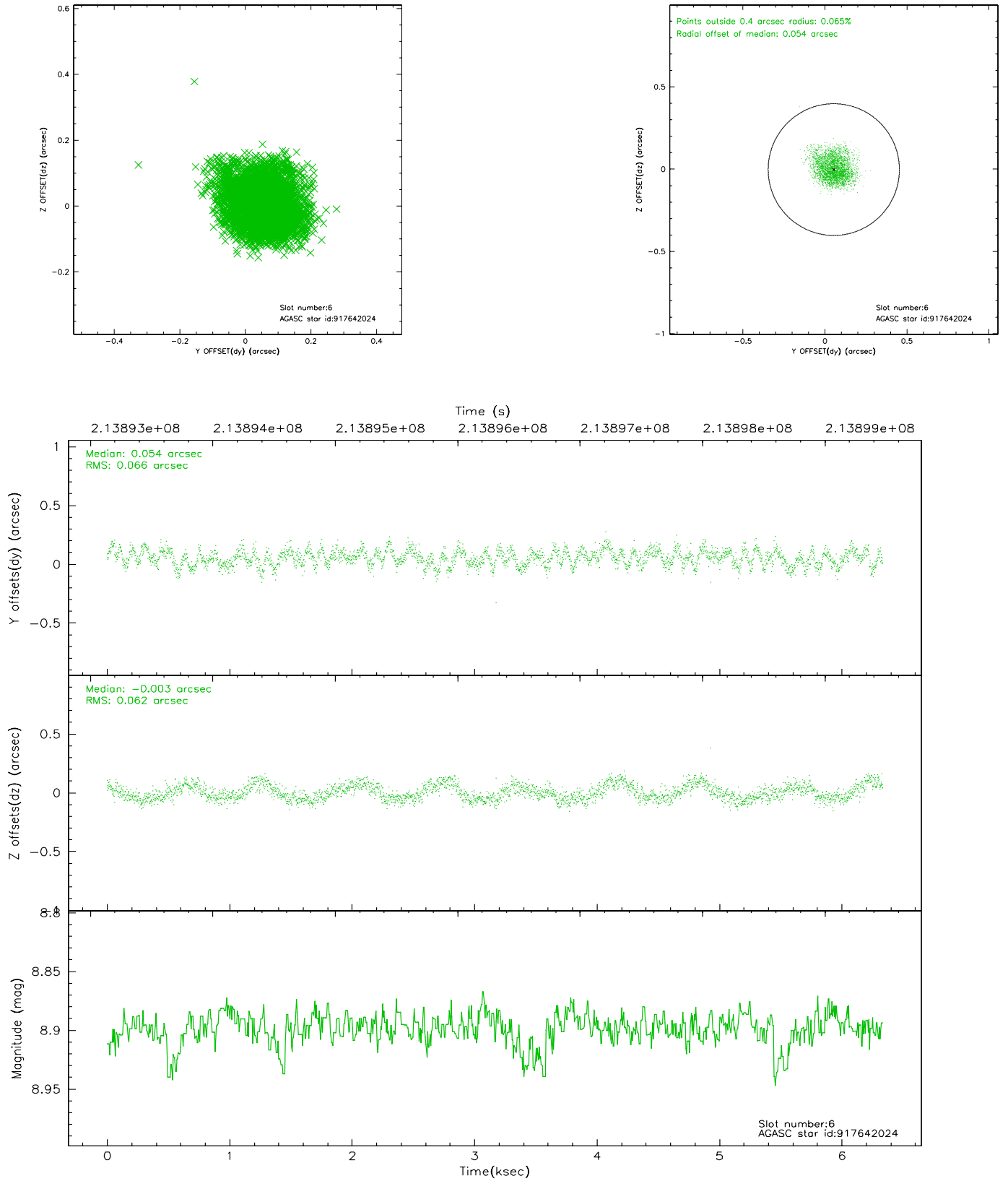
2.4.2 Slot 4



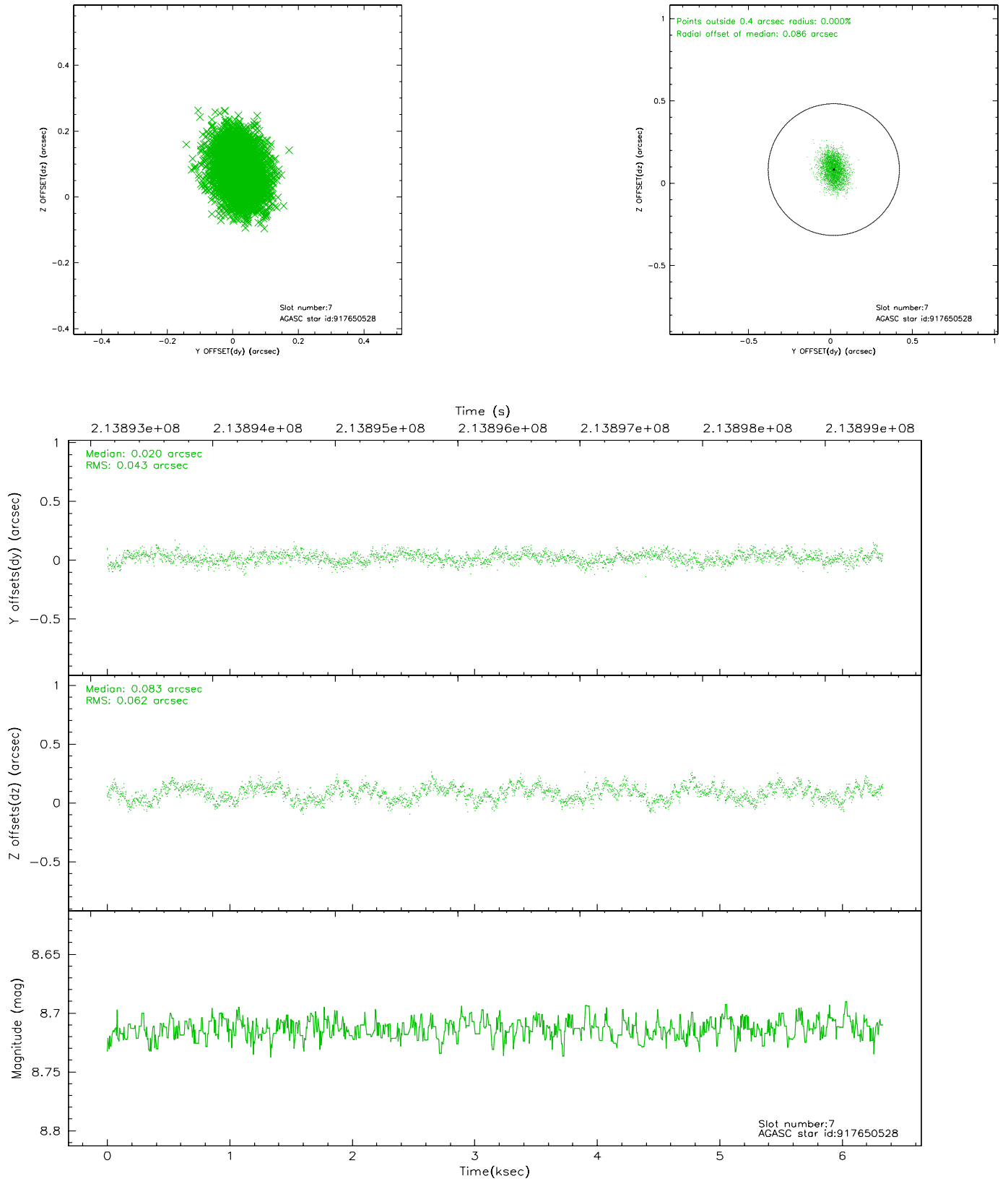
2.4.3 Slot 5



2.4.4 Slot 6

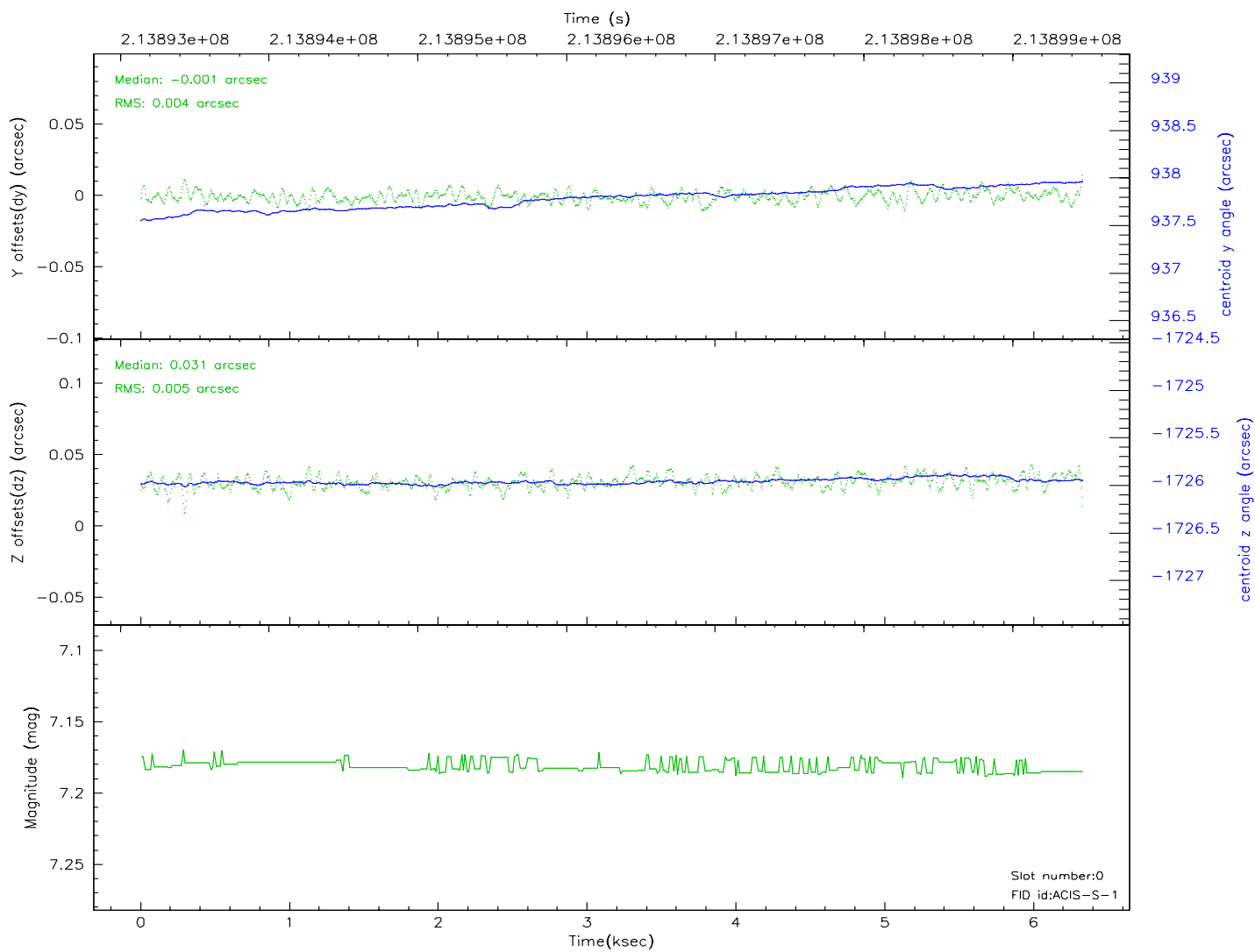
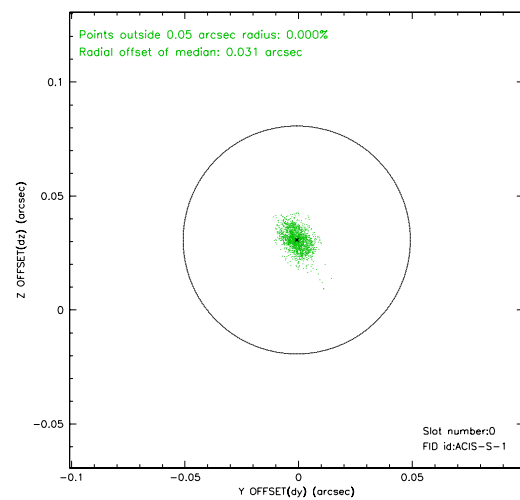
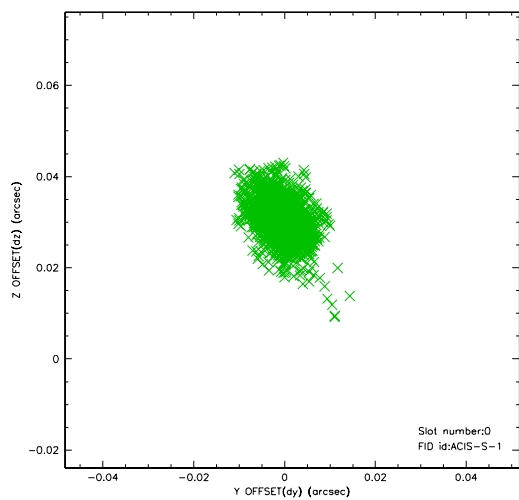


2.4.5 Slot 7

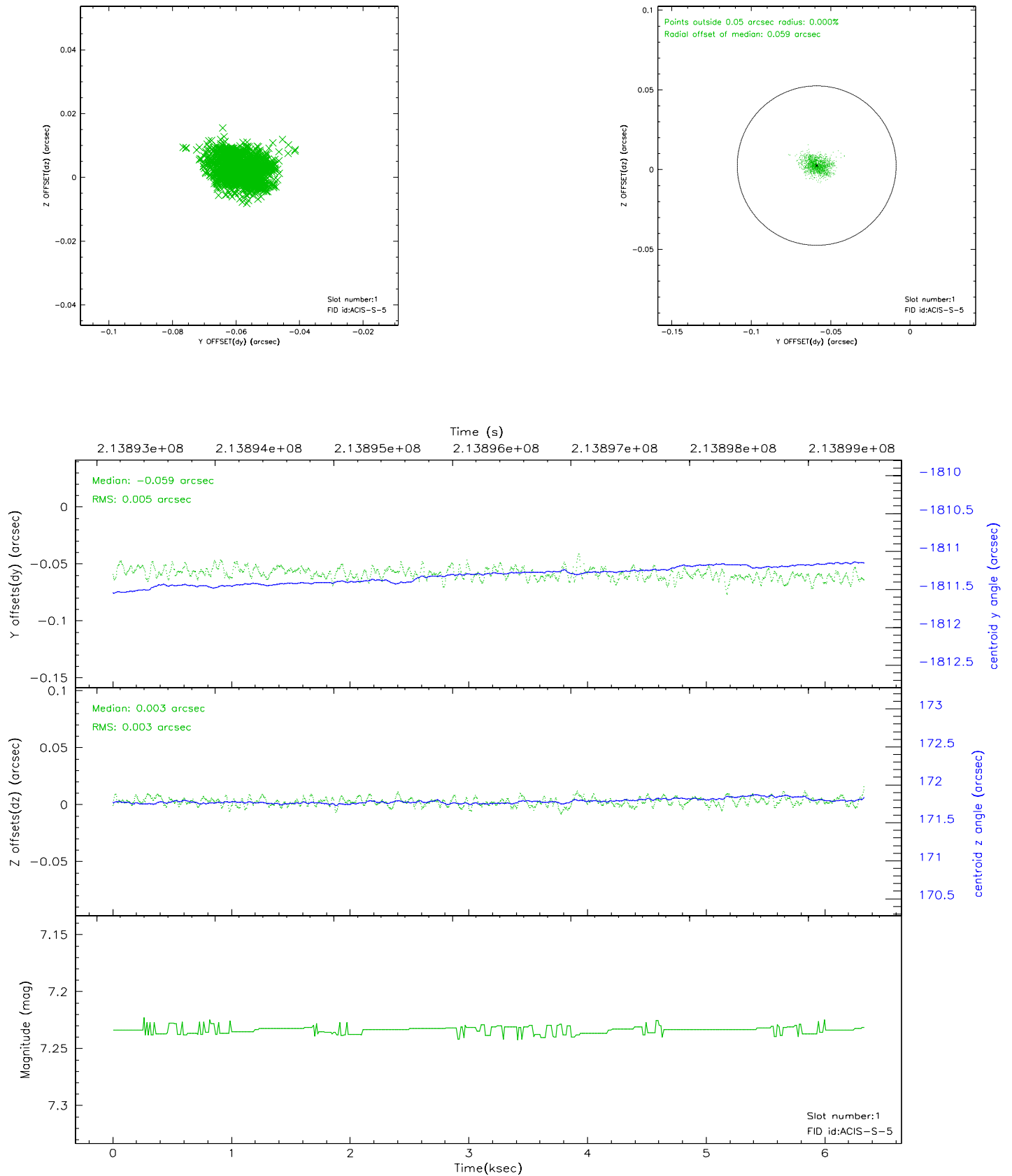


2.5 FID Slots

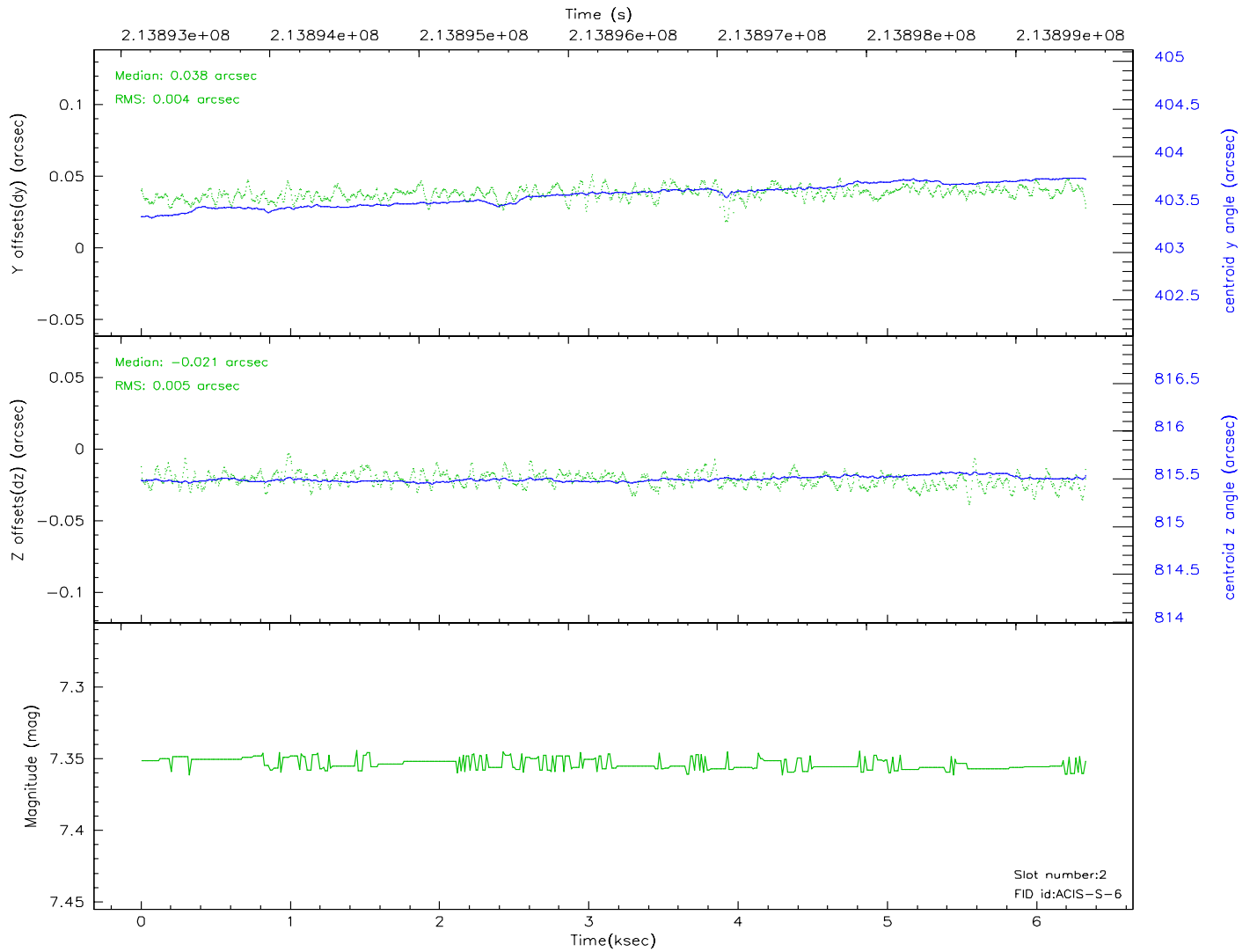
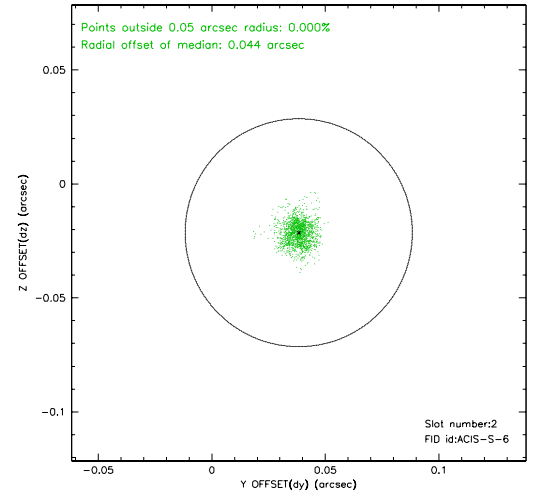
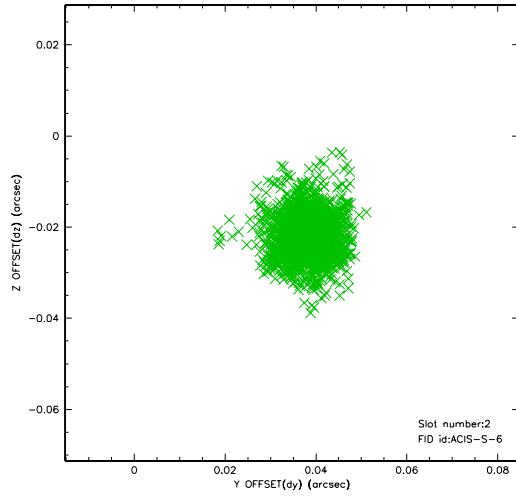
2.5.1 Slot 0



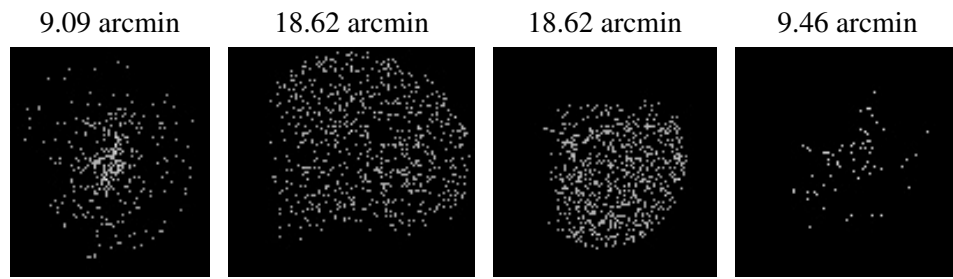
2.5.2 Slot 1



2.5.3 Slot 2



3 Point Sources



A Summary

A.1 Status

V&V Scientist	Beth Sundheim
V&V Date (YYYY-MM-DD)	2006.04.16
V&V Edition	1
V&V Disposition and Status	OK
V&V Charge Time	5.955

A.2 Comments