

V&V Reference Report

L2 ASCDS Version : 7.6.8.1

Observation 4391 - L2 Version 001
Chandra X-Ray Center

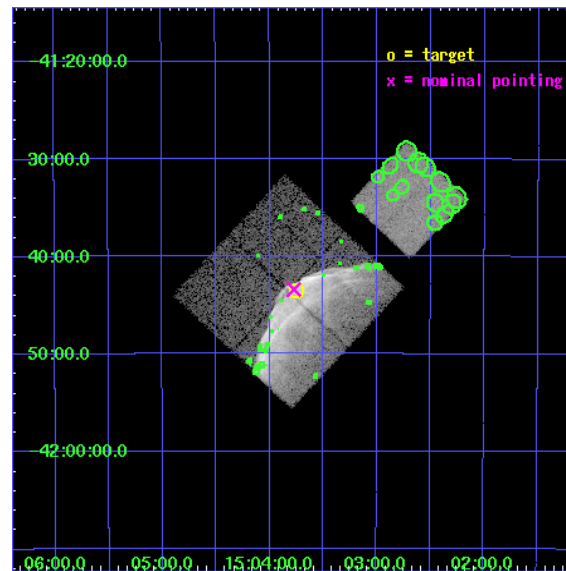
L2 Processing Date : Aug 4 2006

Contents

1	Front	2
2	OBI	3
2.1	OBI	3
2.1.1	Images	3
2.1.2	Bias	3
2.1.3	Parameters	4
2.1.4	Events	4
2.2	Compared Parameters	5
2.3	Aspect	6
2.4	Star Slots	9
2.4.1	Slot 3	9
2.4.2	Slot 4	10
2.4.3	Slot 5	11
2.4.4	Slot 6	12
2.4.5	Slot 7	13
2.5	FID Slots	14
2.5.1	Slot 0	14
2.5.2	Slot 1	15
2.5.3	Slot 2	16
3	Point Sources	17
A	Summary	18
A.1	Status	18
A.2	Comments	18

1 Front

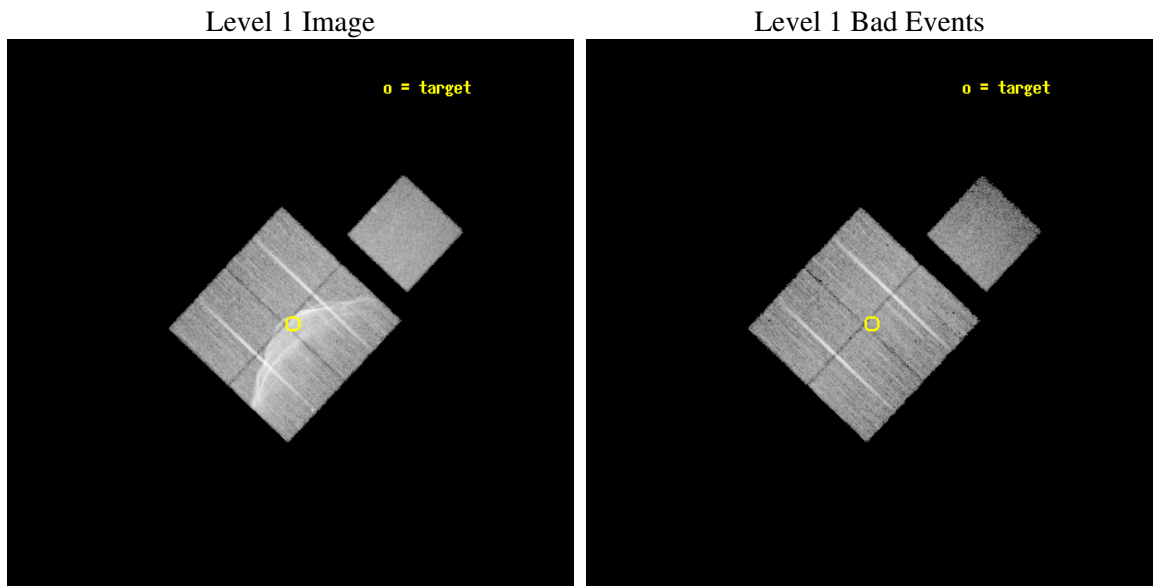
seq_num	500317
obs_id	4391
title	STUDYING HIGH MACH NUMBER SHOCKS IN YOUNG SUPERNOVA REMNANTS WITH CHANDRA
observer	Prof. John Hughes
object	SN1006
dtcycle	0
cycle	P
ra_targ	225.9375
dec_targ	-41.725
ra_nom	225.94329327674
dec_nom	-41.723407700194
roll_nom	43.212553178738
revision	2
ontime	20177.858980983
livetime	19914.220398673
ontime0	20177.859000891
ontime1	20180.999961197
ontime2	20180.999961197
ontime3	20177.858980983
ontime7	20180.999961197
l2events	207898



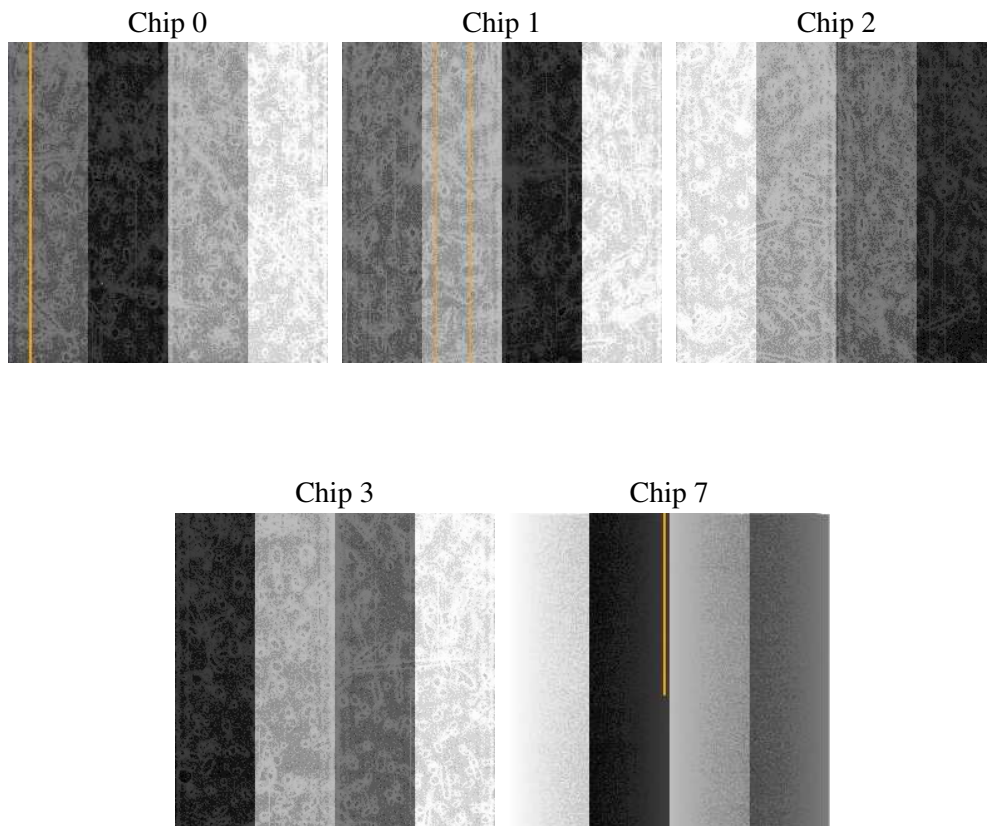
2 OBI

2.1 OBI

2.1.1 Images



2.1.2 Bias



2.1.3 Parameters

obi_num	0
ascdsver	7.6.8.1
caldbver	3.2.2
date	2006-08-04T16:28:04
revision	2

sched_exp_time	20074.000000
ontime	20180.982182443
ontime0	20180.982222259
ontime1	20184.123182565
ontime2	20184.123182565
ontime3	20180.982182443
ontime7	20184.123182565
l1events	622761

2.1.4 Events

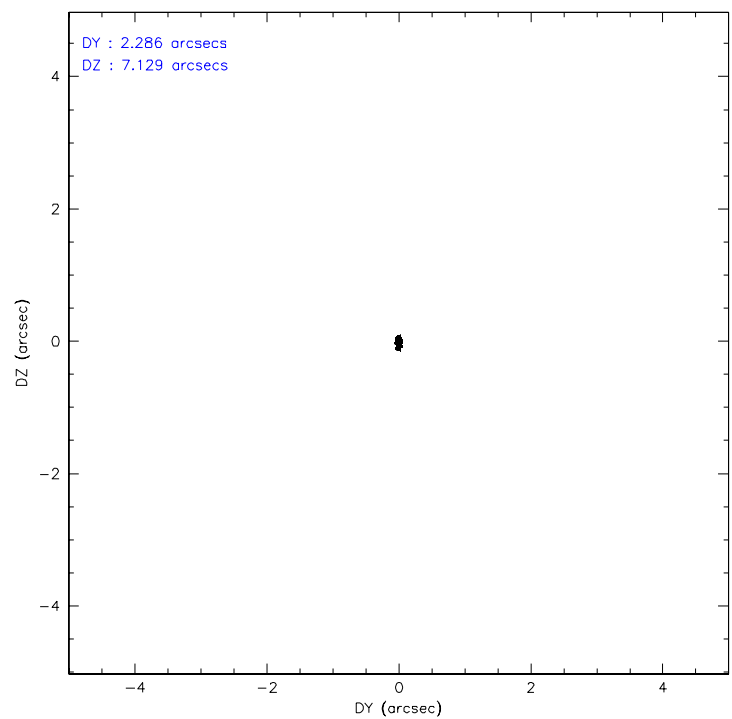
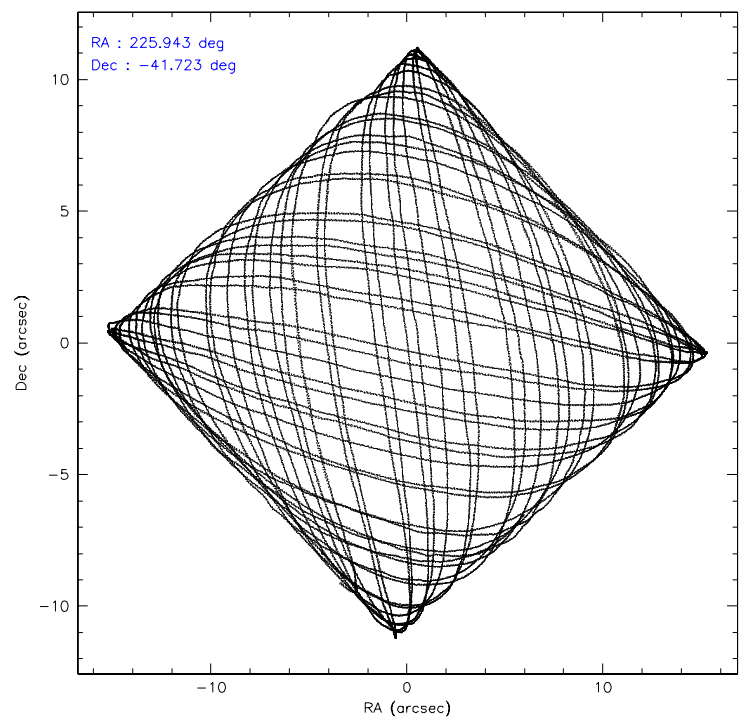
	ccd 0	ccd 1	ccd 2	ccd 3	ccd 7
level 1 events	93882	176965	104225	154256	93433
rejected events	82175	85406	92832	88783	51898
rejected %	87%	48%	89%	57%	55%

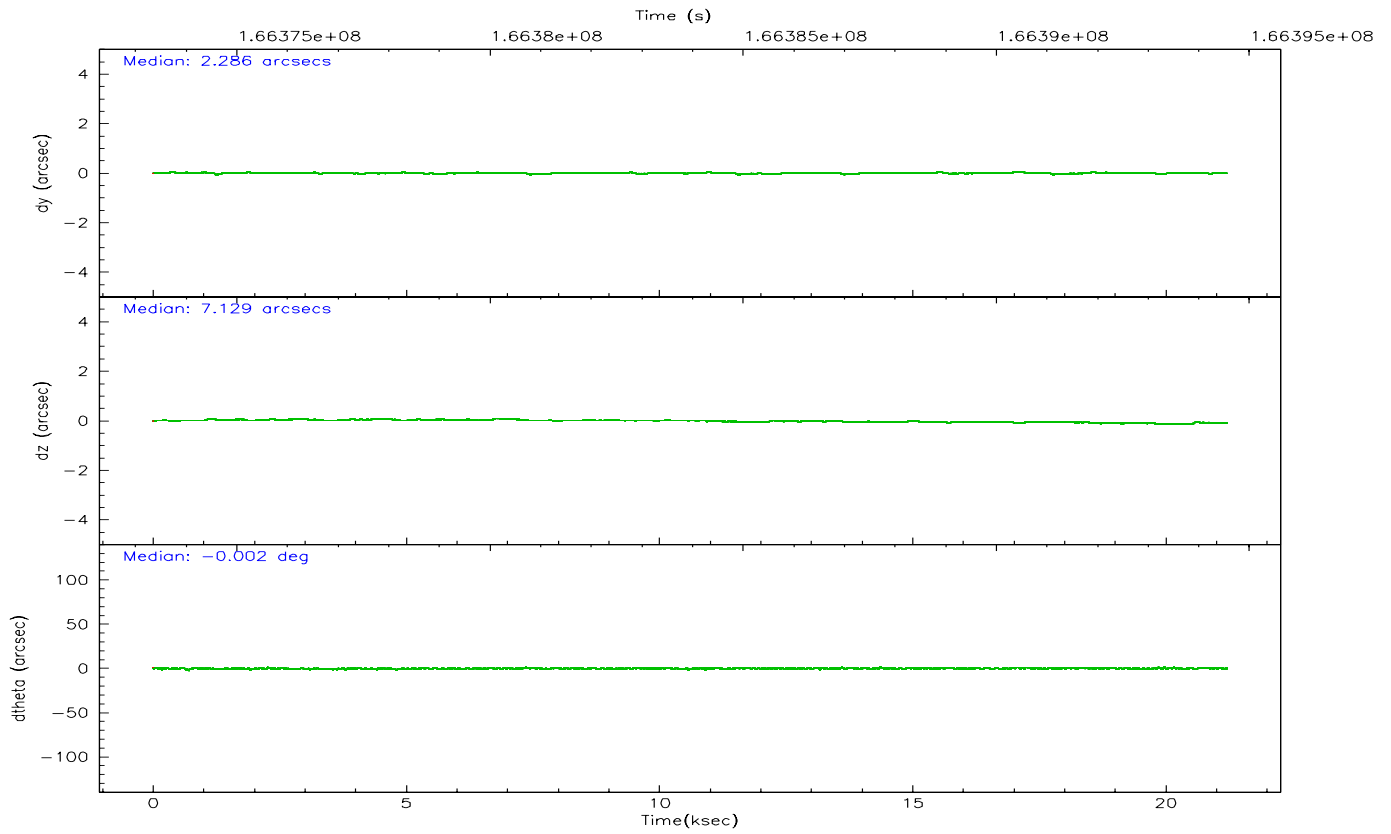
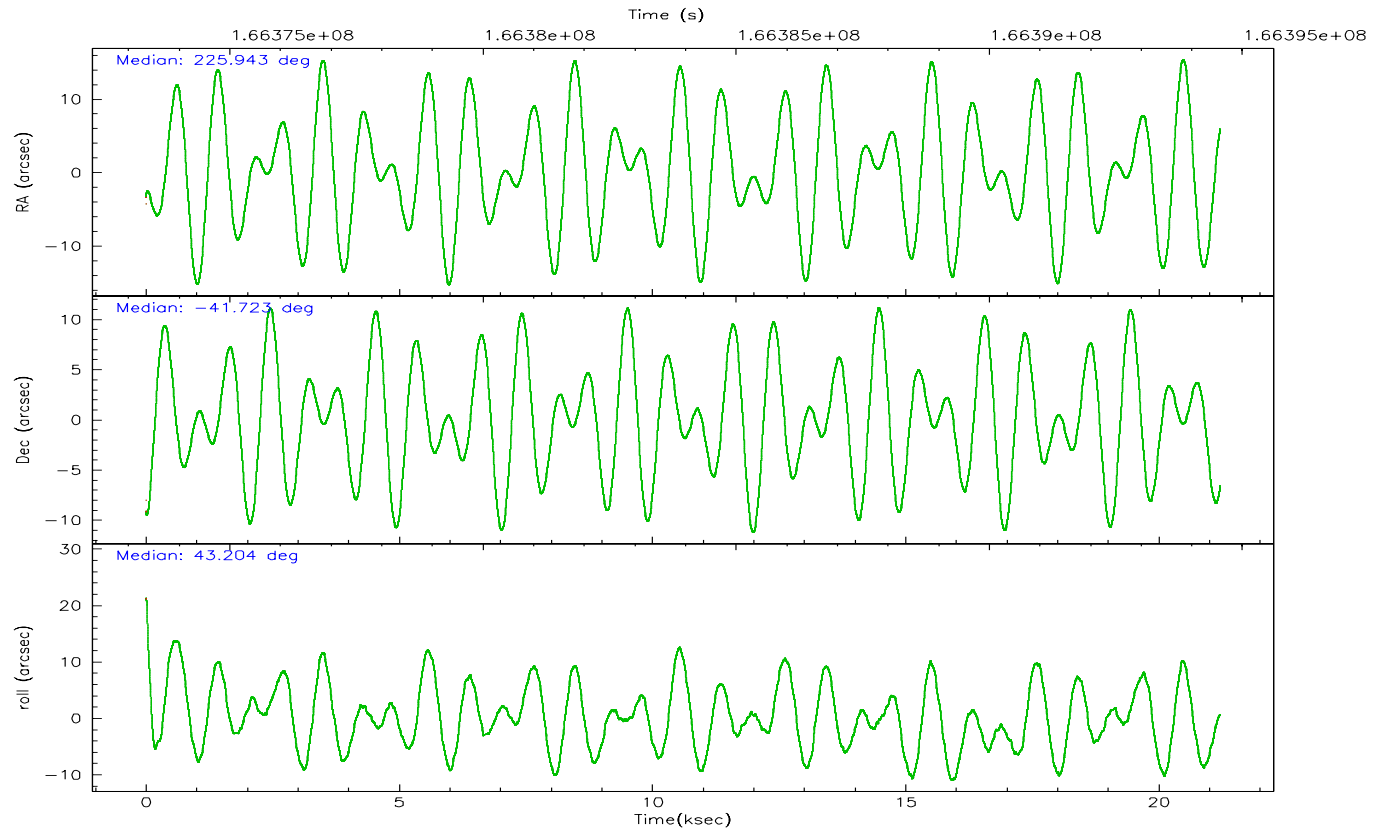
	ccd 0	ccd 1	ccd 2	ccd 3	ccd 7
grade 0 events	5422	73562	5349	52155	3074
	5%	41%	5%	33%	3%
grade 1 events	41	254	49	272	58
	0%	0%	0%	0%	0%
grade 2 events	2267	8928	2259	6446	9953
	2%	5%	2%	4%	10%
grade 3 events	1185	3050	1028	2250	2218
	1%	1%	0%	1%	2%
grade 4 events	1090	3037	1122	2282	2263
	1%	1%	1%	1%	2%
grade 5 events	3012	3425	2775	3371	7326
	3%	1%	2%	2%	7%
grade 6 events	1743	3000	1638	2354	24031
	1%	1%	1%	1%	25%
grade 7 events	79122	81709	90005	85126	44510
	84%	46%	86%	55%	47%

2.2 Compared Parameters

Parameter	Planned	Actual	Parameter	Planned	Actual
Instrument	ACIS	ACIS	Obspar format version number	6	6
Detector	ACIS-01237	ACIS-01237	Obspar file type	PREDICTED	ACTUAL
Grating	NONE	NONE	Obspar update status	NONE	UPDATED
Data mode	VFAINT	VFAINT	On-chip summing requested	N	N
Observation mode	POINTING	POINTING	Subarray requested	NONE	NONE
Pointing RA	225.932867	225.943293276741	Alternating exposures requested	N	N
Pointing Dec	-41.749644	-41.72340770019351	Primary exposure time	0.000000	3.1
Pointing Roll	42.996918	43.21255317873796			
SIM focus pos (mm)	-0.782348	-0.7809083437167272			
SIM defocus (mm)	0	0.001439871863259334			
SIM translation stage pos (mm)	-233.592463	-233.5874344608287			
SIM translation stage offset (mm)	0	-0.005018542100998502			
Observation start time	166374481.184000	166373043.1164			
Observation start date	2003-04-10T15:06:57	2003-04-10T14:44:03			
Observation end time	166394555.184000	166394689.06731			
Observation end date	2003-04-10T20:41:31	2003-04-10T20:44:49			
Read mode	TIMED	TIMED			

2.3 Aspect



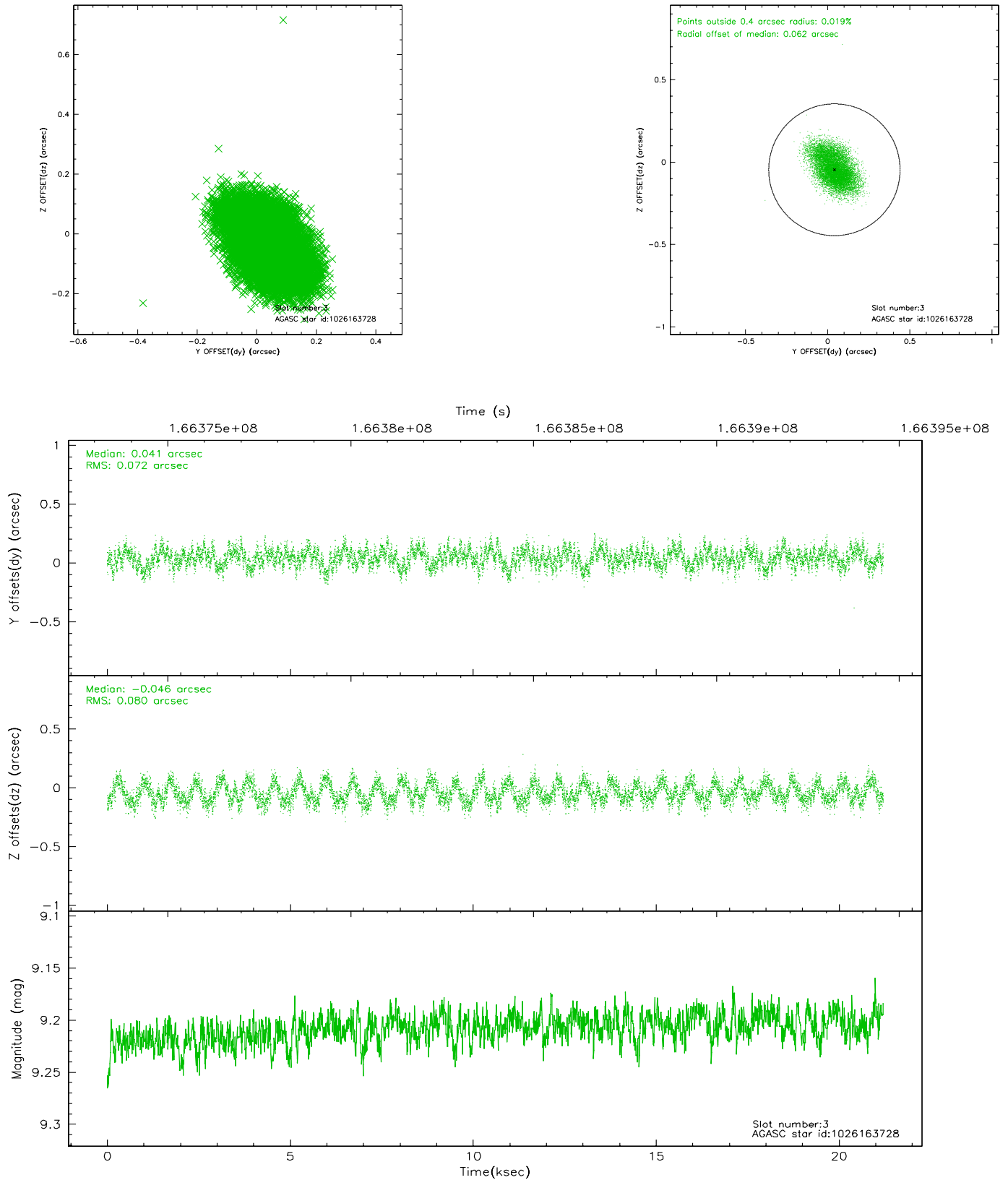


Slot Statistics

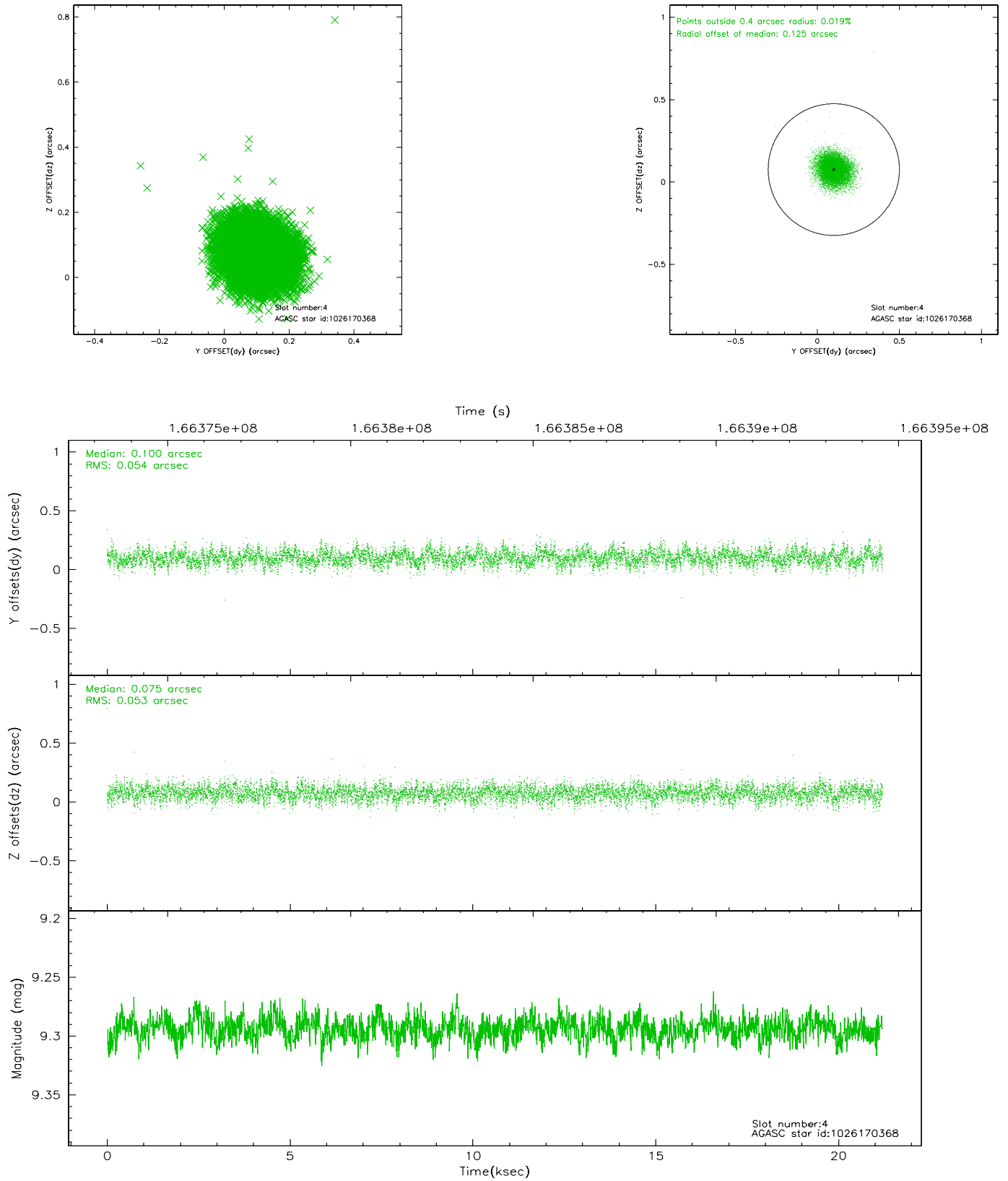
slot	status	id	mag	n_pts	med_dy	med_dz	dr1	dr2	ra	dec	mean_y	mean_z
0	FID	ACIS-I-1	7.25	5173	-0.044	-0.020	0.008	0.014	0.000000	0.000000	937.48	-830.54
1	FID	ACIS-I-4	7.17	5174	-0.010	0.058	0.007	0.011	0.000000	0.000000	2157.66	1069.25
2	FID	ACIS-I-5	7.23	5174	-0.045	0.033	0.006	0.010	0.000000	0.000000	-1810.29	1067.30
3	GUIDE	1026163728	9.21	10345	0.041	-0.046	0.115	0.184	225.377558	-41.568164	-651.60	1494.18
4	GUIDE	1026170368	9.29	10346	0.100	0.075	0.080	0.130	225.763429	-42.291155	-1659.23	-1118.41
5	GUIDE	1026185256	9.32	10340	0.082	0.073	0.101	0.163	226.095983	-42.018643	-341.20	-1006.12
6	GUIDE	1026183784	9.17	10303	-0.100	0.124	0.082	0.136	226.363370	-41.841537	617.25	-1031.30
7	GUIDE	1025649216	9.69	10337	-0.108	-0.231	0.116	0.189	225.652215	-41.077666	1091.85	2287.72

2.4 Star Slots

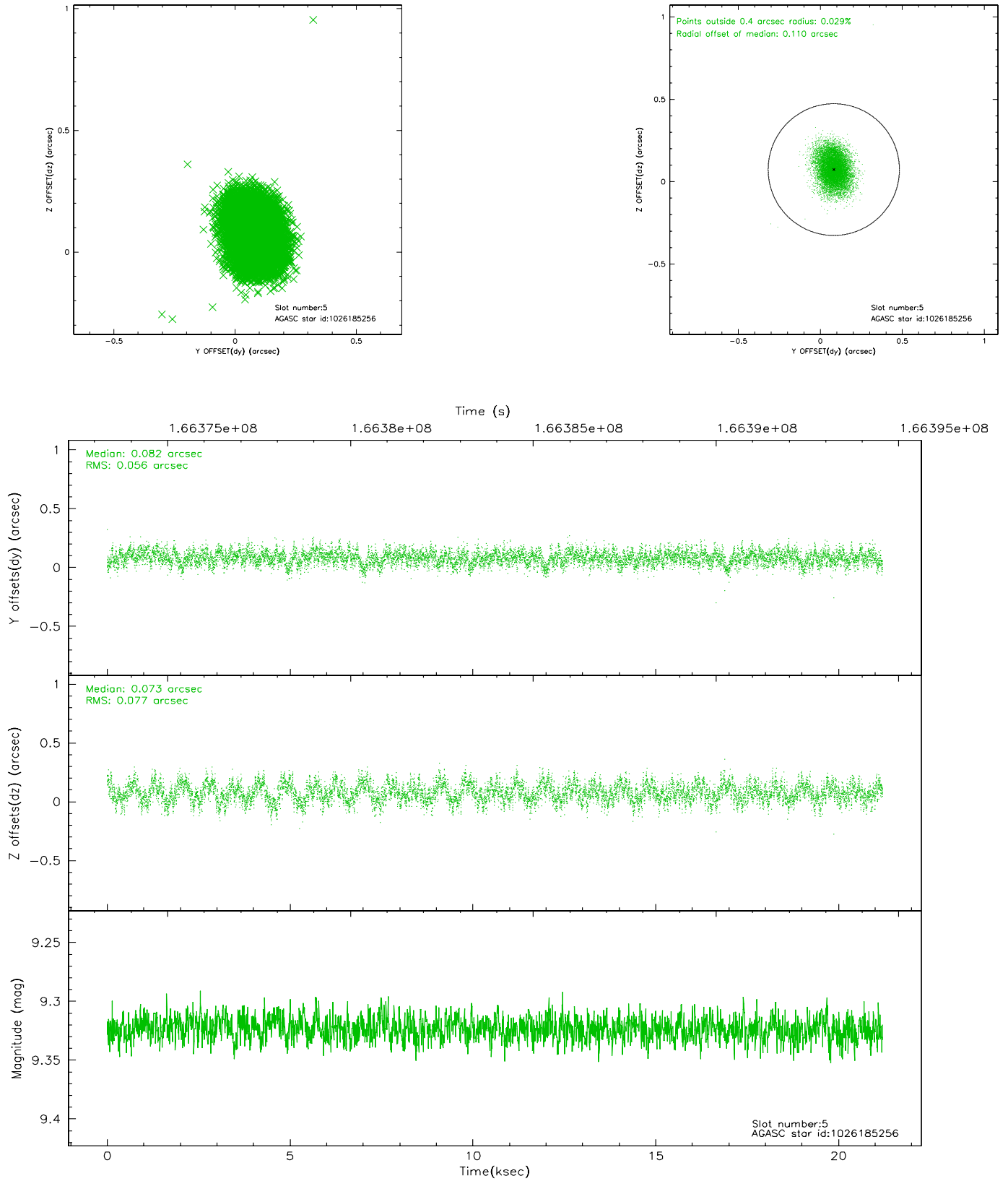
2.4.1 Slot 3



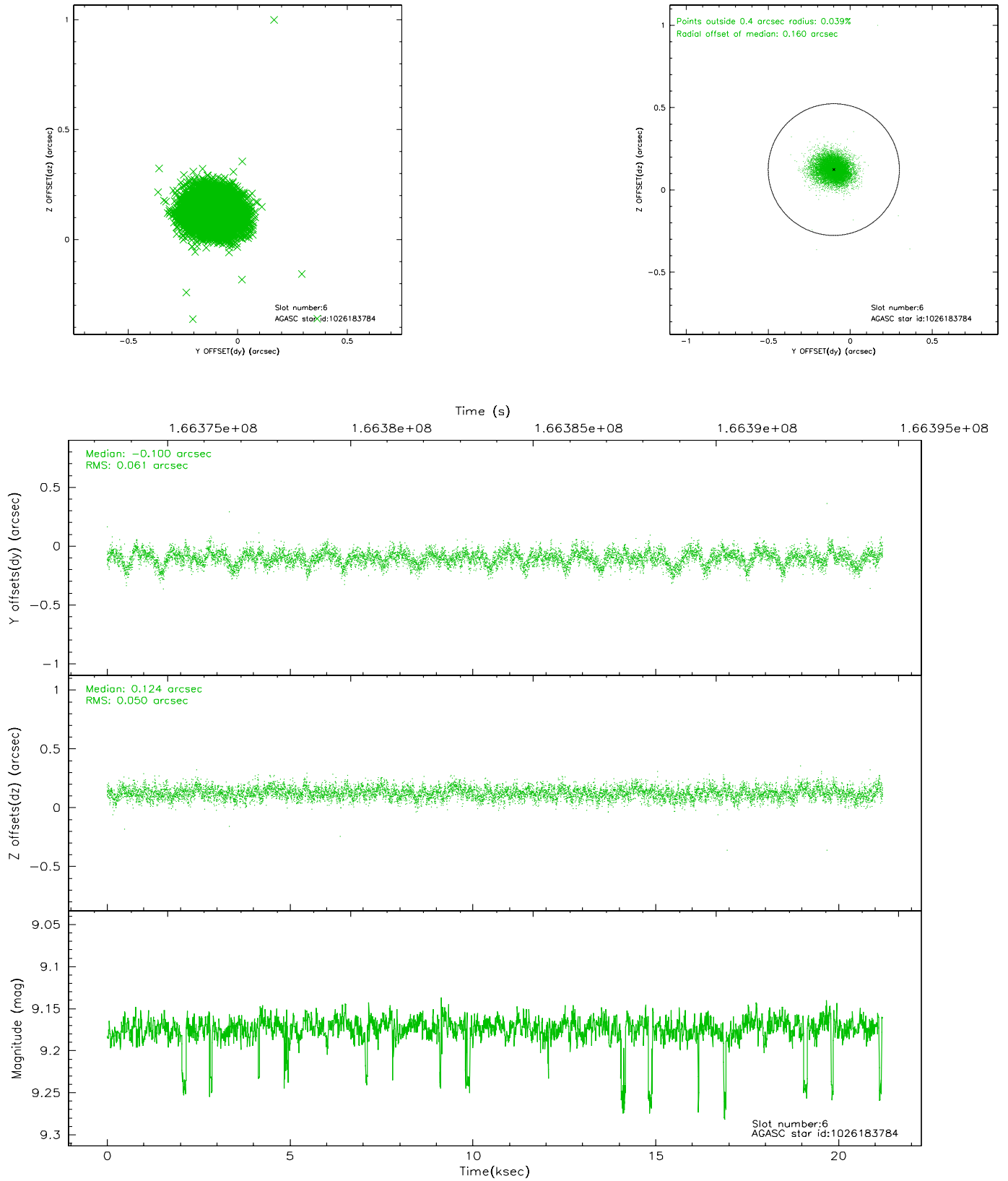
2.4.2 Slot 4



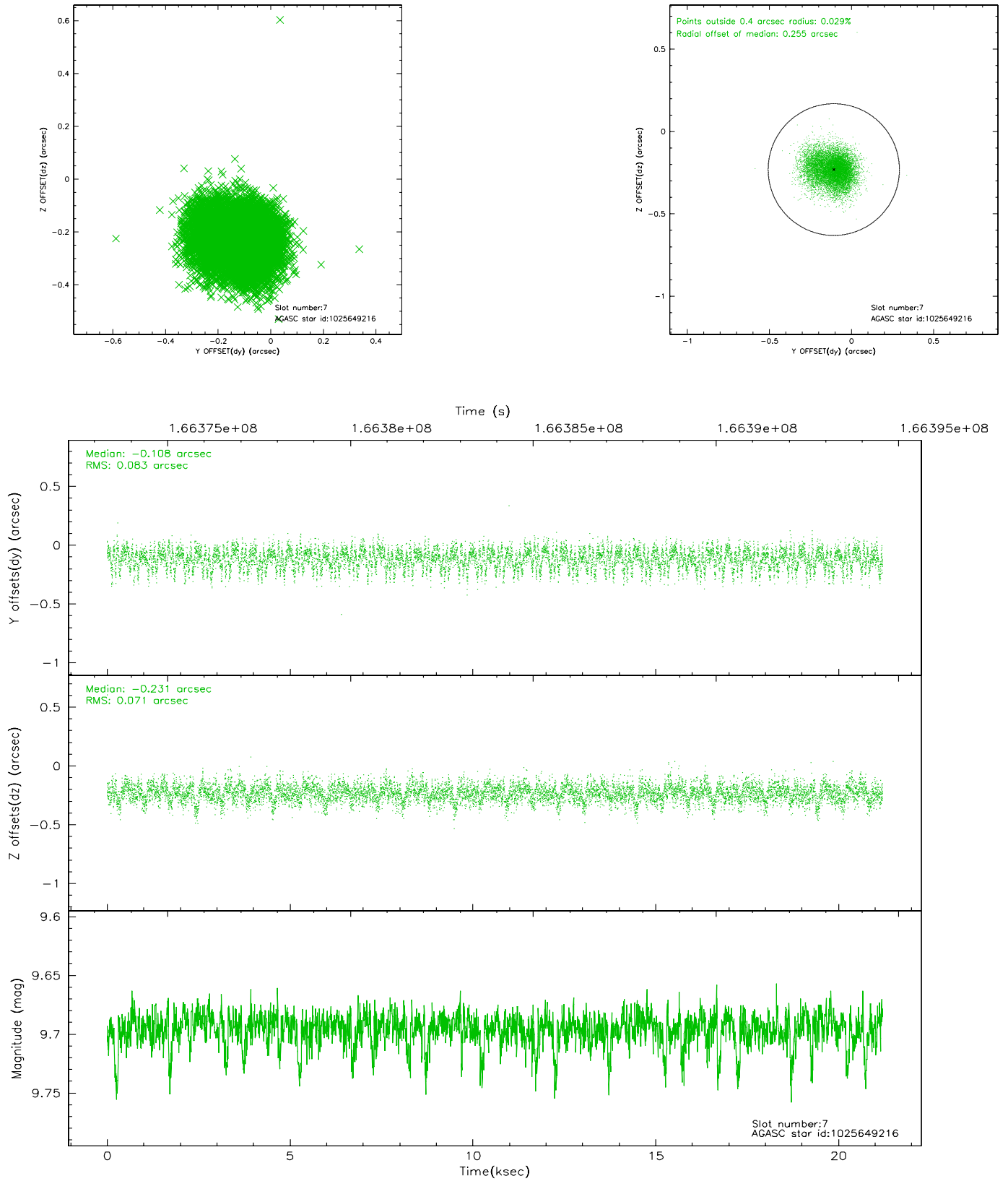
2.4.3 Slot 5



2.4.4 Slot 6

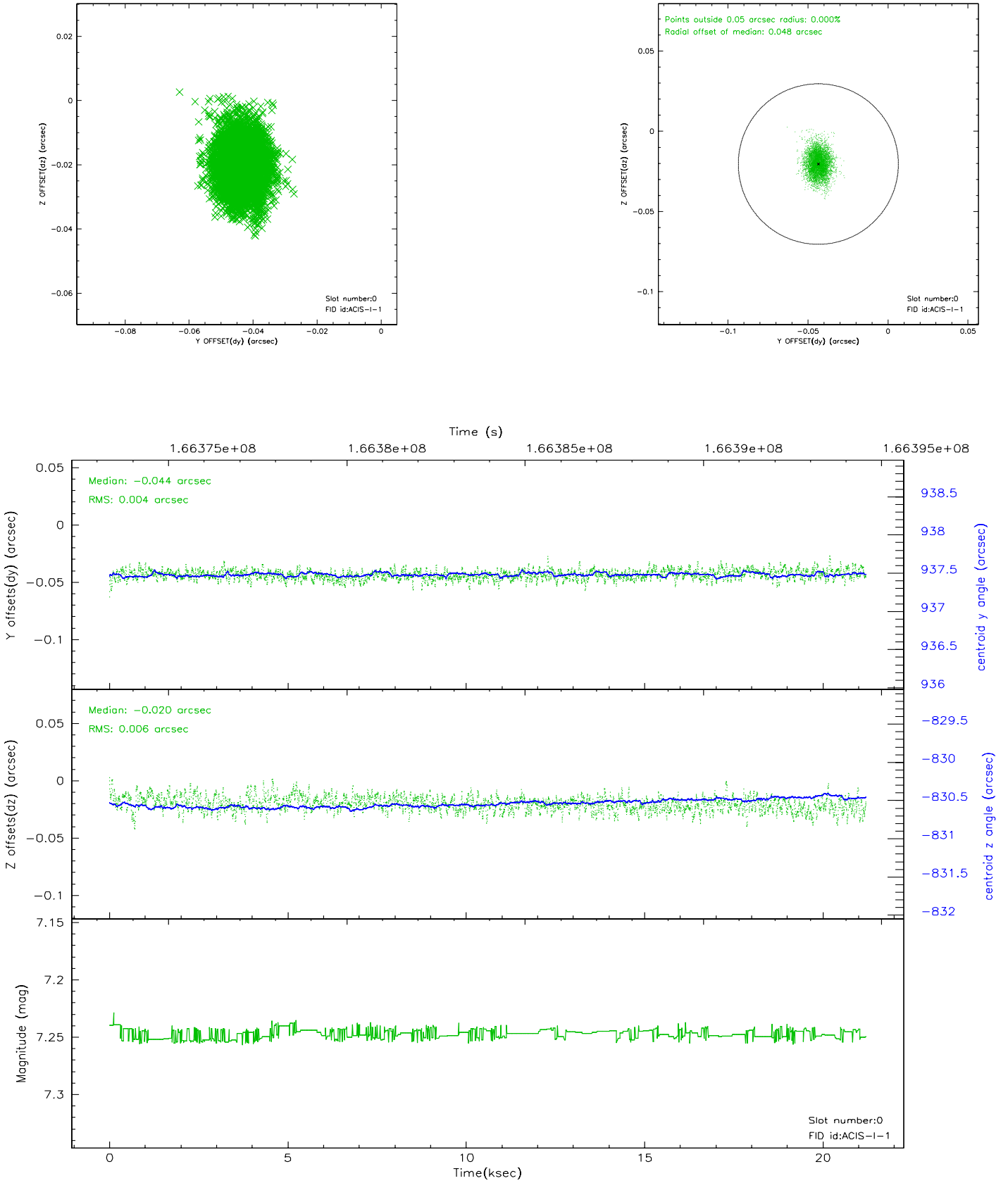


2.4.5 Slot 7

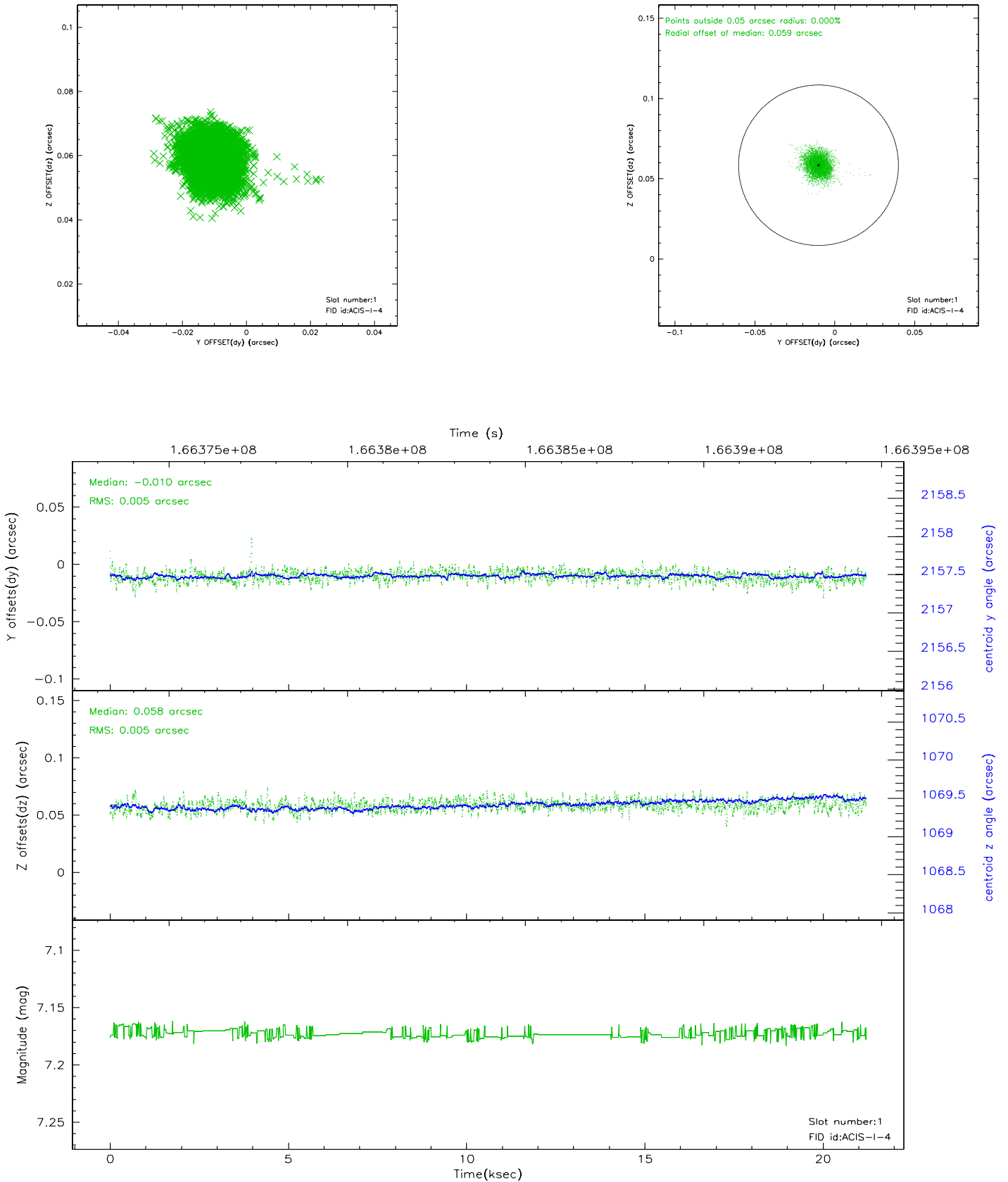


2.5 FID Slots

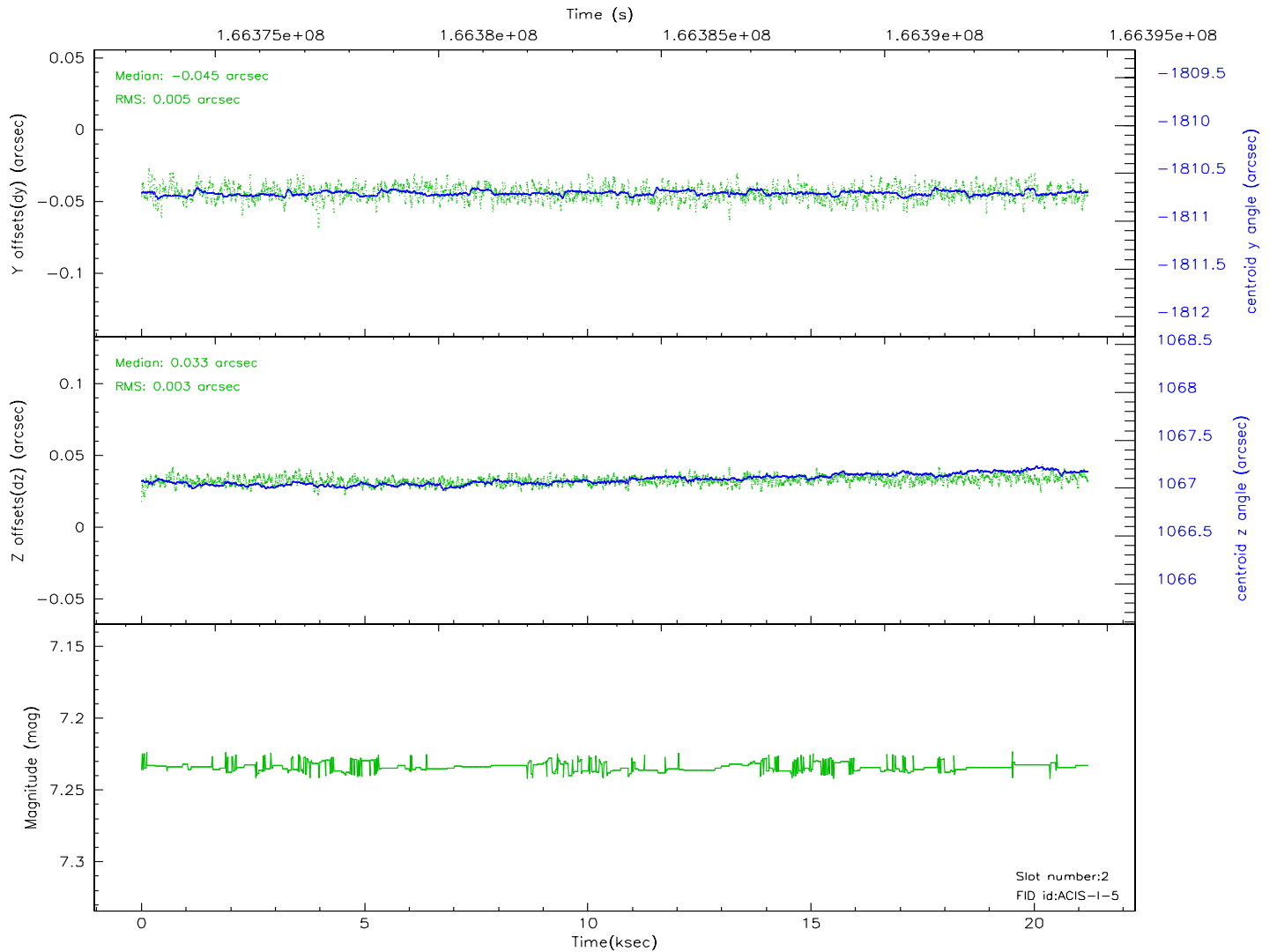
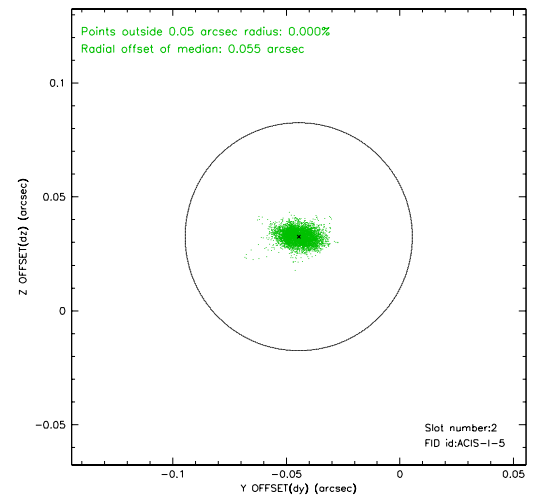
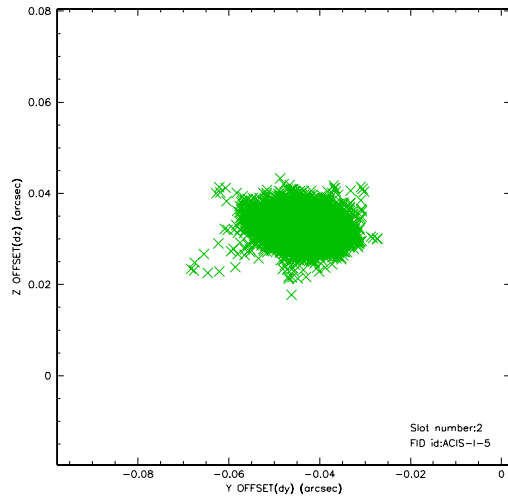
2.5.1 Slot 0



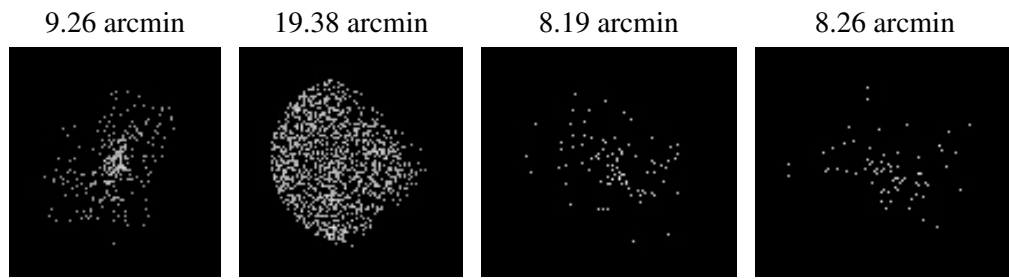
2.5.2 Slot 1



2.5.3 Slot 2



3 Point Sources



A Summary

A.1 Status

V&V Scientist	Beth Sundheim
V&V Date (YYYY-MM-DD)	2006.08.04
V&V Edition	1
V&V Disposition and Status	OK
V&V Charge Time	20.178

A.2 Comments