

# V&V Reference Report

## L2 ASCDS Version : 7.6.9

Observation 4371 - L2 Version 001  
Chandra X-Ray Center

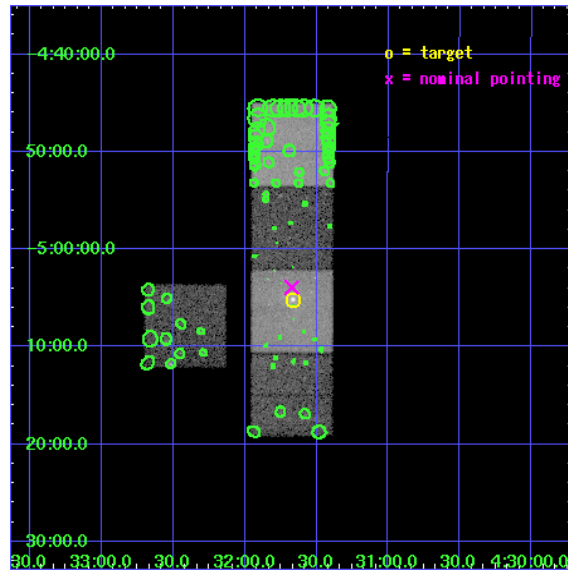
L2 Processing Date : Oct 4 2006

## Contents

<b>1</b>	<b>Front</b>	<b>2</b>
<b>2</b>	<b>OBI</b>	<b>3</b>
2.1	OBI . . . . .	3
2.1.1	Images . . . . .	3
2.1.2	Bias . . . . .	3
2.1.3	Parameters . . . . .	4
2.1.4	Events . . . . .	4
2.2	Compared Parameters . . . . .	5
2.3	Aspect . . . . .	6
2.4	Star Slots . . . . .	9
2.4.1	Slot 3 . . . . .	9
2.4.2	Slot 4 . . . . .	10
2.4.3	Slot 5 . . . . .	11
2.4.4	Slot 6 . . . . .	12
2.4.5	Slot 7 . . . . .	13
2.5	FID Slots . . . . .	14
2.5.1	Slot 0 . . . . .	14
2.5.2	Slot 1 . . . . .	15
2.5.3	Slot 2 . . . . .	16
<b>3</b>	<b>Point Sources</b>	<b>17</b>
<b>A</b>	<b>Summary</b>	<b>18</b>
A.1	Status . . . . .	18
A.2	Comments . . . . .	18

# 1 Front

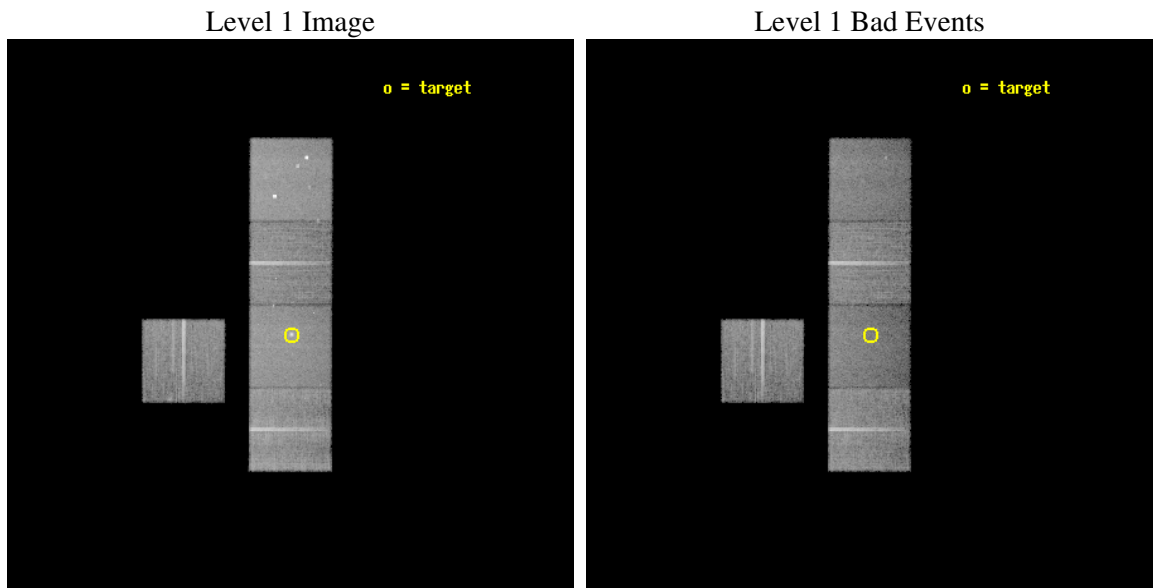
seq_num	600218
obs_id	4371
title	STELLAR MASS LOSS VERSUS EXTERNAL ACCRETION IN X-RAY BRIGHT ELLIPTICALS
observer	Dr. Craig Sarazin
object	NGC1600
dtcycle	0
cycle	P
ra_targ	67.91625
dec_targ	-5.086139
ra_nom	67.917940303593
dec_nom	-5.0654281452469
roll_nom	90.156776871433
revision	2
ontime	27103.299947888
liveltime	26749.175380909
ontime3	27093.877037168
ontime5	27103.299947888
ontime6	27103.299947888
ontime7	27103.299947888
ontime8	27097.018007457
l2events	201625



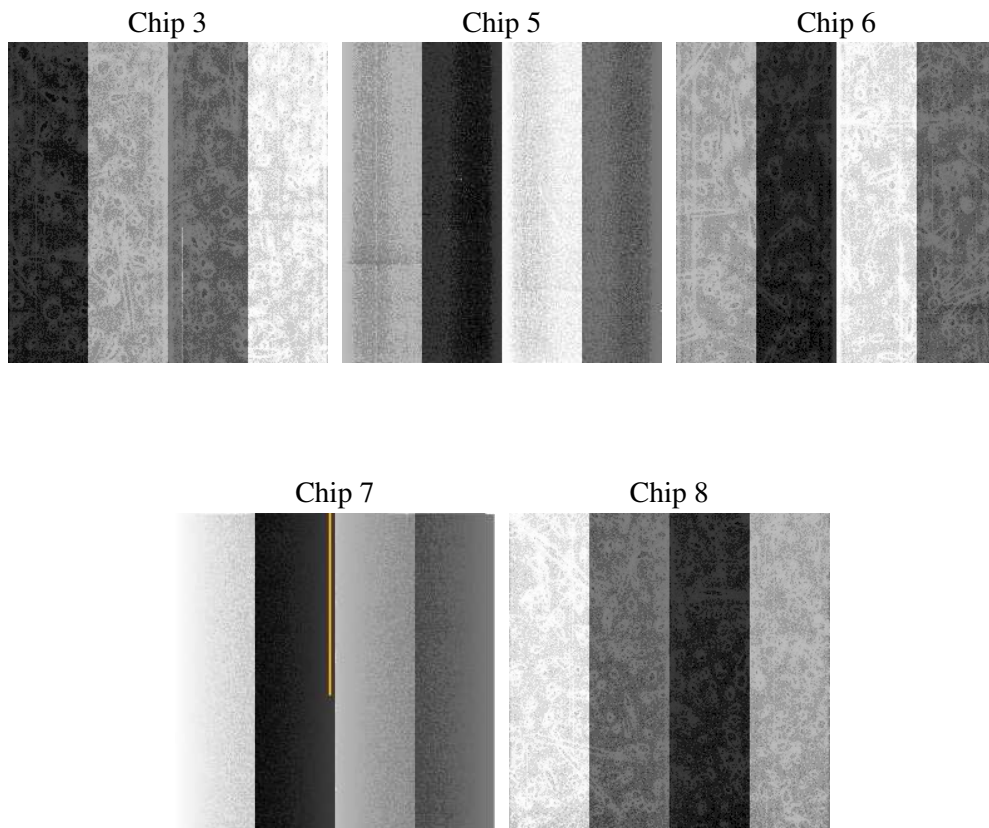
## 2 OBI

### 2.1 OBI

#### 2.1.1 Images



#### 2.1.2 Bias



### 2.1.3 Parameters

obi_num	0
ascdsver	7.6.9
caldsver	3.2.3
date	2006-10-04T14:42:33
revision	2

sched_exp_time	27000.000000
ontime	27110.002011806
ontime3	27100.579081178
ontime5	27110.001991898
ontime6	27110.001991898
ontime7	27110.002011806
ontime8	27103.720051467
l1events	818161

### 2.1.4 Events

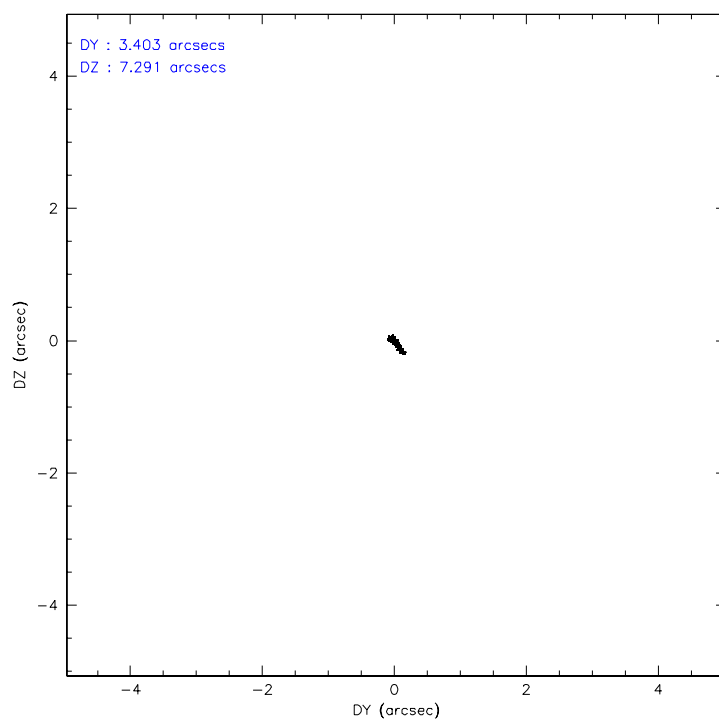
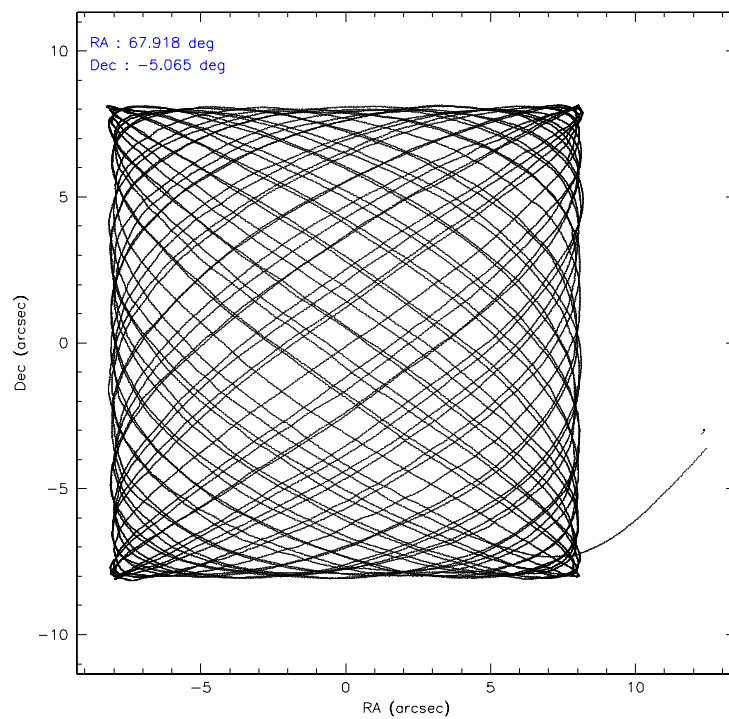
	ccd 3	ccd 5	ccd 6	ccd 7	ccd 8
level 1 events	140340	191189	145364	163122	178146
rejected events	126705	96966	128221	88129	138156
rejected %	90%	50%	88%	54%	77%

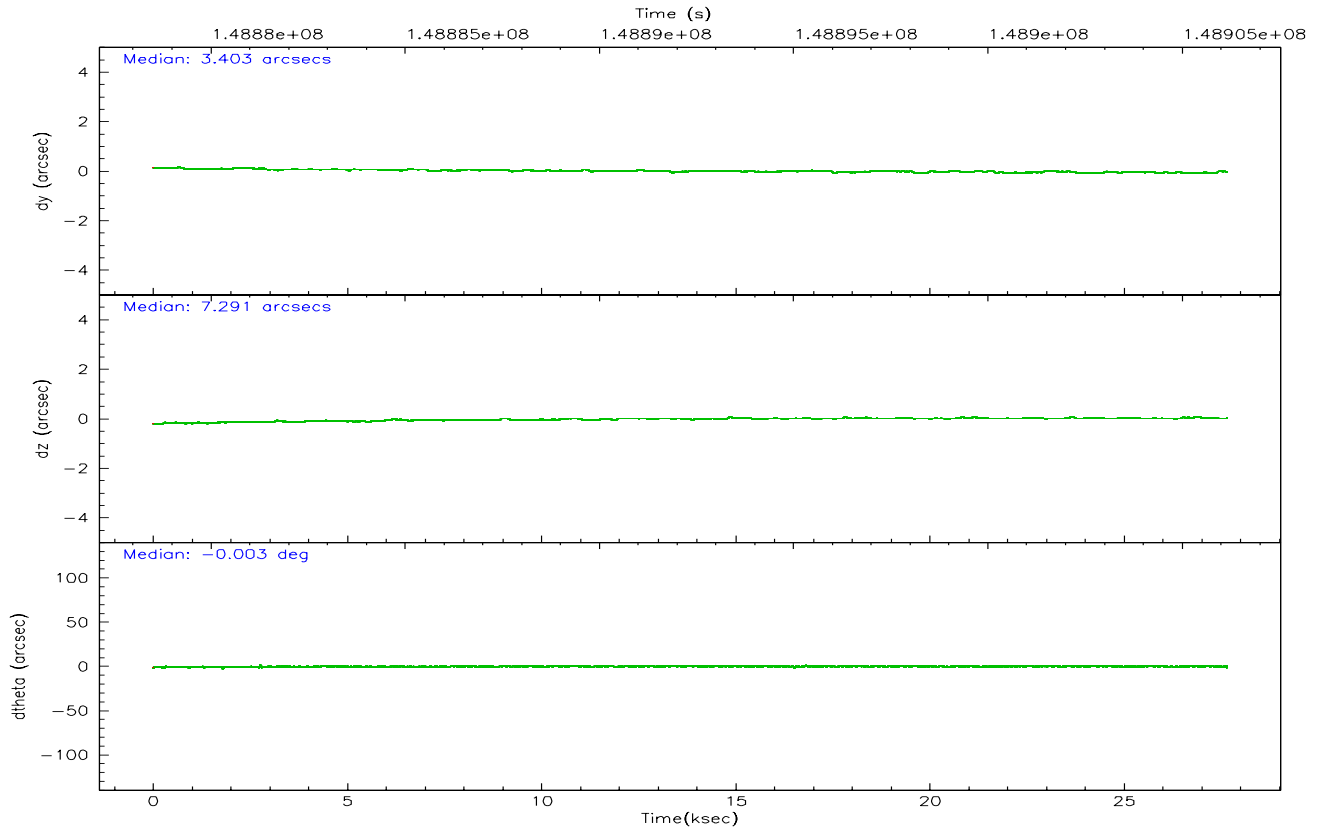
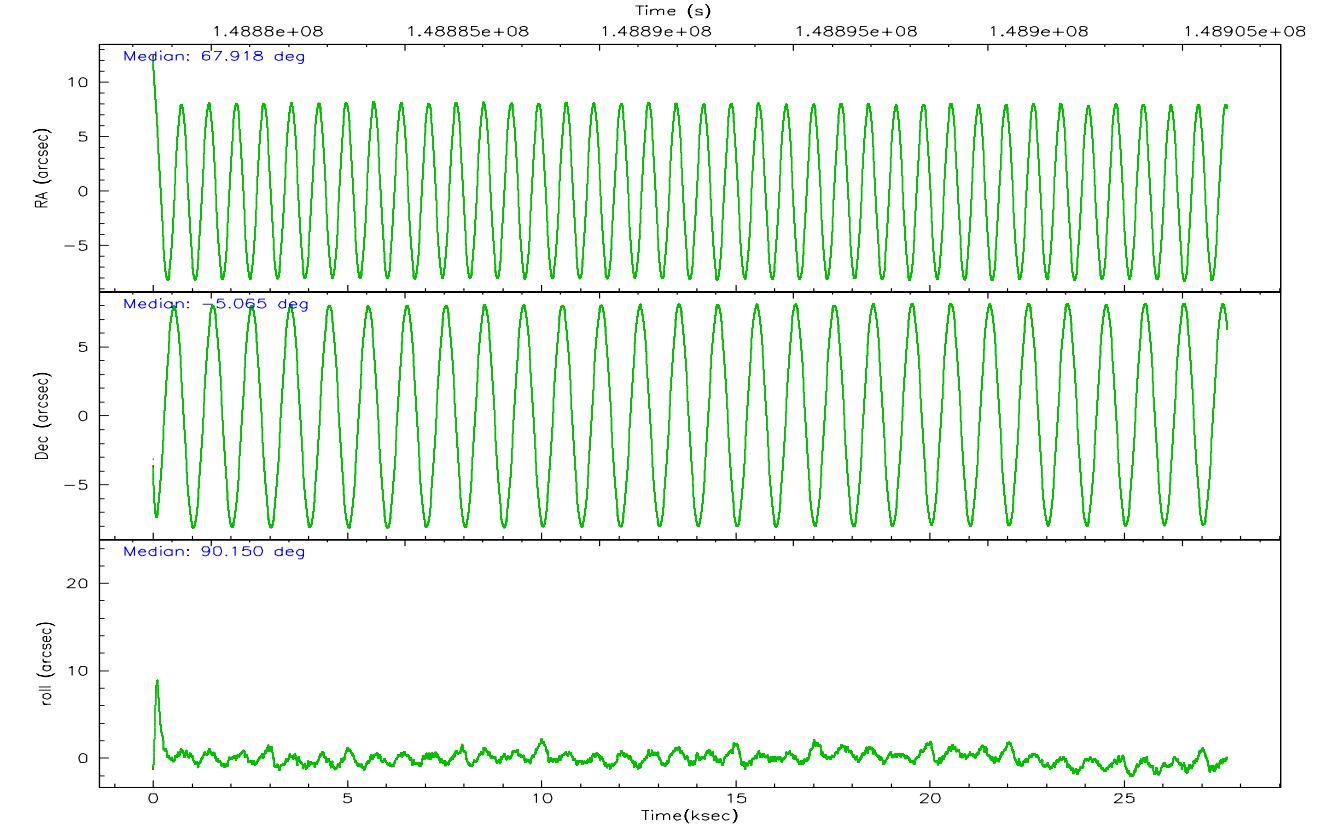
	ccd 3	ccd 5	ccd 6	ccd 7	ccd 8
grade 0 events	5239	10902	7444	7469	12933
	3%	5%	5%	4%	7%
grade 1 events	73	278	73	87	94
	0%	0%	0%	0%	0%
grade 2 events	2724	28784	3167	18596	8571
	1%	15%	2%	11%	4%
grade 3 events	1623	2542	1722	5261	4316
	1%	1%	1%	3%	2%
grade 4 events	1469	2374	1676	5039	3965
	1%	1%	1%	3%	2%
grade 5 events	5232	10059	5557	12196	7563
	3%	5%	3%	7%	4%
grade 6 events	2581	49639	3138	38644	10225
	1%	25%	2%	23%	5%
grade 7 events	121399	86611	122587	75830	130479
	86%	45%	84%	46%	73%

## 2.2 Compared Parameters

Parameter	Planned	Actual	Parameter	Planned	Actual
Instrument	ACIS	ACIS	Obspar format version number	6	6
Detector	ACIS-35678	ACIS-35678	Obspar file type	PREDICTED	ACTUAL
Grating	NONE	NONE	Obspar update status	NONE	UPDATED
Data mode	VFAINT	VFAINT	Number of optional ACIS chips dropped	0	0
Observation mode	POINTING	POINTING	On-chip summing requested	N	N
Pointing RA	67.931978	67.91794030359335	Subarray requested	NONE	NONE
Pointing Dec	-5.088804	-5.065428145246854	Alternating exposures requested	N	N
Pointing Roll	90.001395	90.15677687143315	Primary exposure time	0.000000	3.1
SIM focus pos (mm)	-0.684267	-0.6828225247311905			
SIM defocus (mm)	0	0.001444936568705701			
SIM translation stage pos (mm)	-190.132523	-190.1400660498719			
SIM translation stage offset (mm)	0	0.00754346686406393			
Observation start time	148879161.184000	148877964.16011			
Observation start date	2002-09-20T03:18:17	2002-09-20T02:59:24			
Observation end time	148906161.184000	148907076.21131			
Observation end date	2002-09-20T10:48:17	2002-09-20T11:04:36			
Read mode	TIMED	TIMED			

## 2.3 Aspect





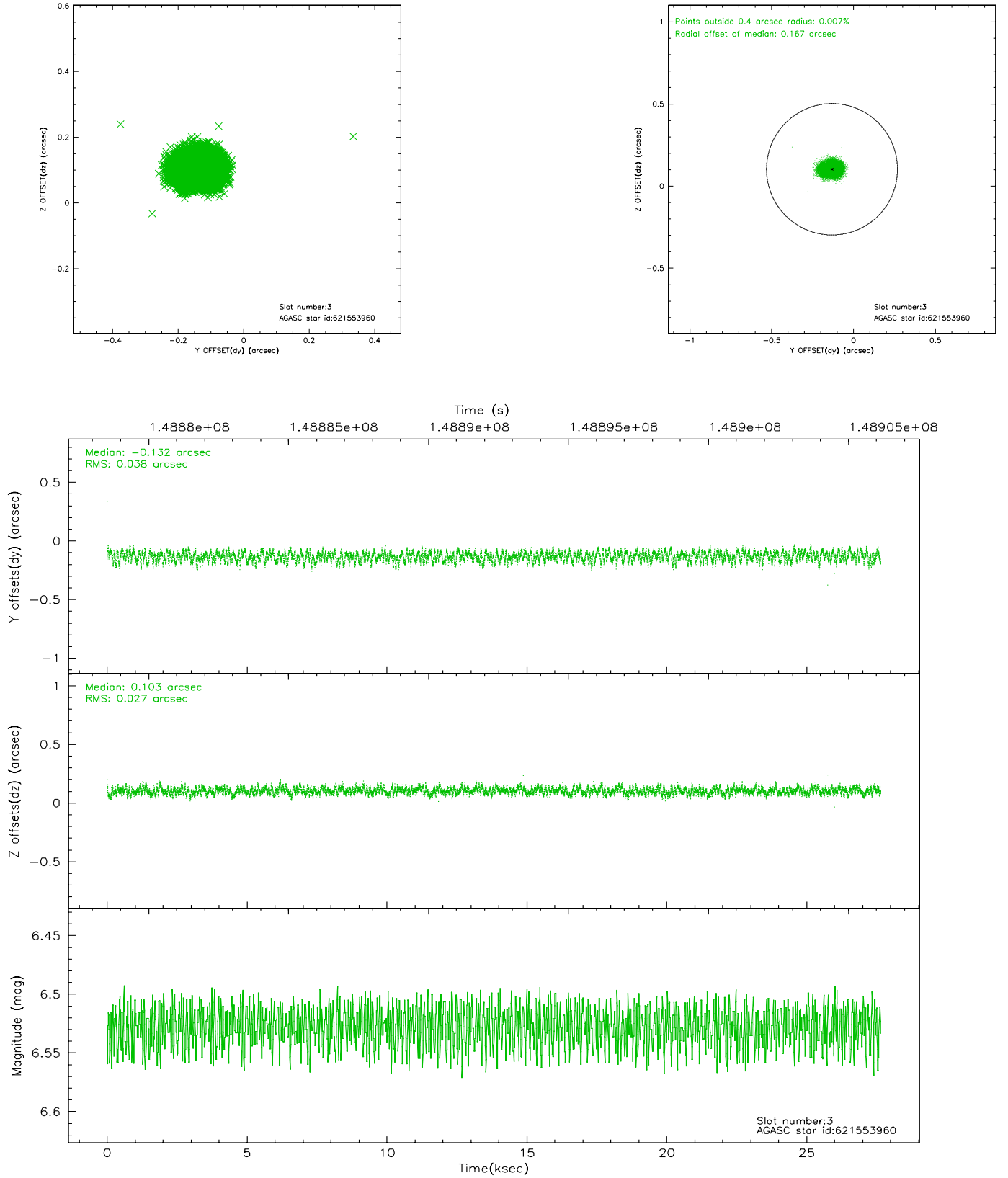
### Slot Statistics

slot	status	id	mag	n_pts	med_dy	med_dz	dr1	dr2	ra	dec	mean_y	mean_z
0	FID	ACIS-S-3	7.35	6746	-0.089	-0.046	0.007	0.012	0.000000	0.000000	57.00	-1857.55
1	FID	ACIS-S-4	7.20	6746	0.015	0.069	0.006	0.010	0.000000	0.000000	2157.31	179.96
2	FID	ACIS-S-5	7.24	6744	0.047	-0.013	0.006	0.011	0.000000	0.000000	-1808.74	173.75
3	GUIDE	621553960	6.53	13491	-0.132	0.103	0.050	0.076	68.435033	-5.309670	-795.94	-1802.57
4	GUIDE	621546424	7.71	13490	-0.036	0.257	0.059	0.098	68.622214	-5.138021	-178.60	-2474.10
5	GUIDE	619986032	7.90	13489	-0.176	-0.244	0.050	0.080	67.431542	-4.597237	1768.54	1796.22
6	GUIDE	621544064	8.50	13487	0.078	0.179	0.070	0.117	68.548522	-4.557927	1910.50	-2211.51
7	GUIDE	620375512	8.89	13480	0.266	-0.294	0.085	0.138	67.329905	-5.680923	-2133.15	2156.86

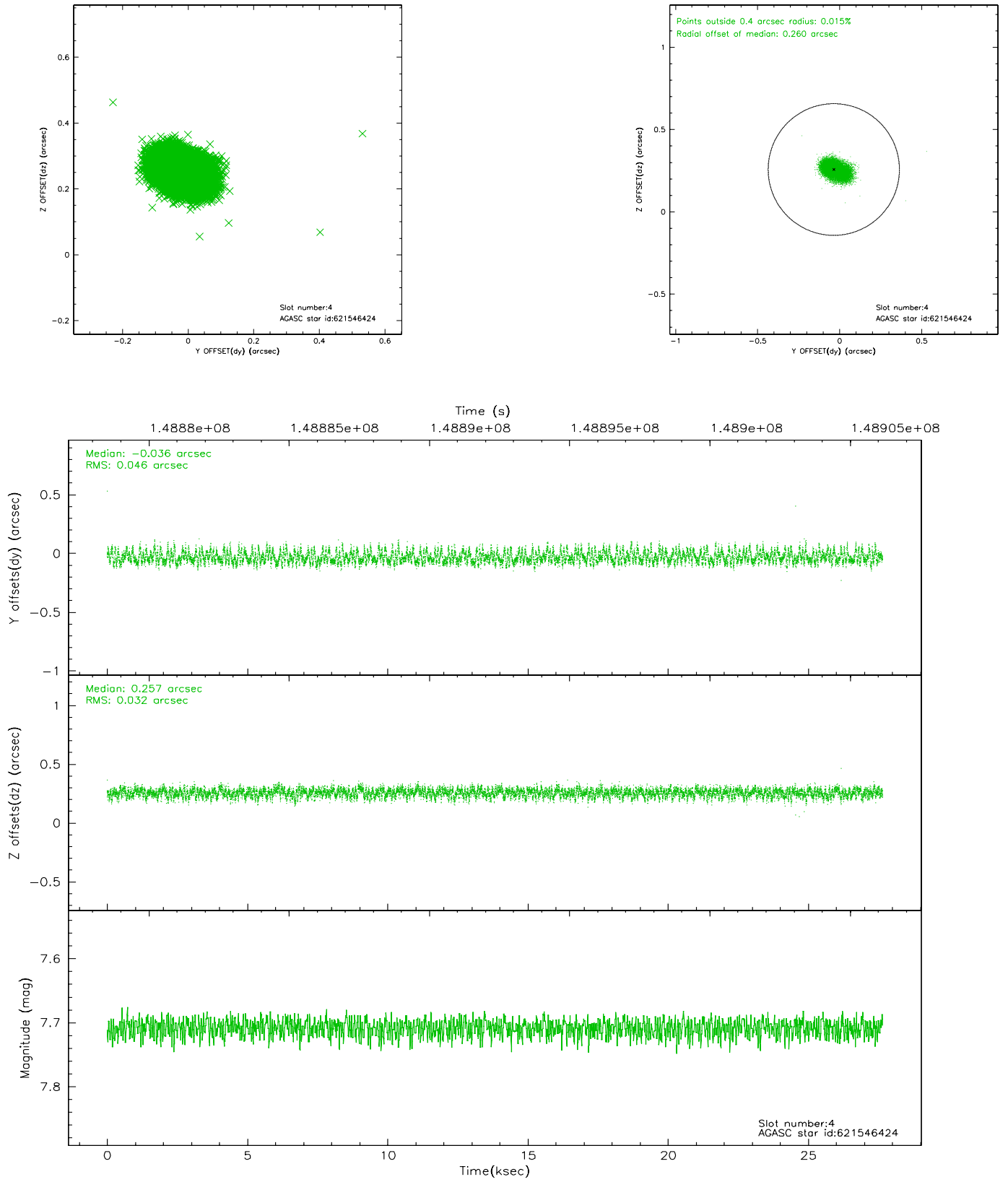


## 2.4 Star Slots

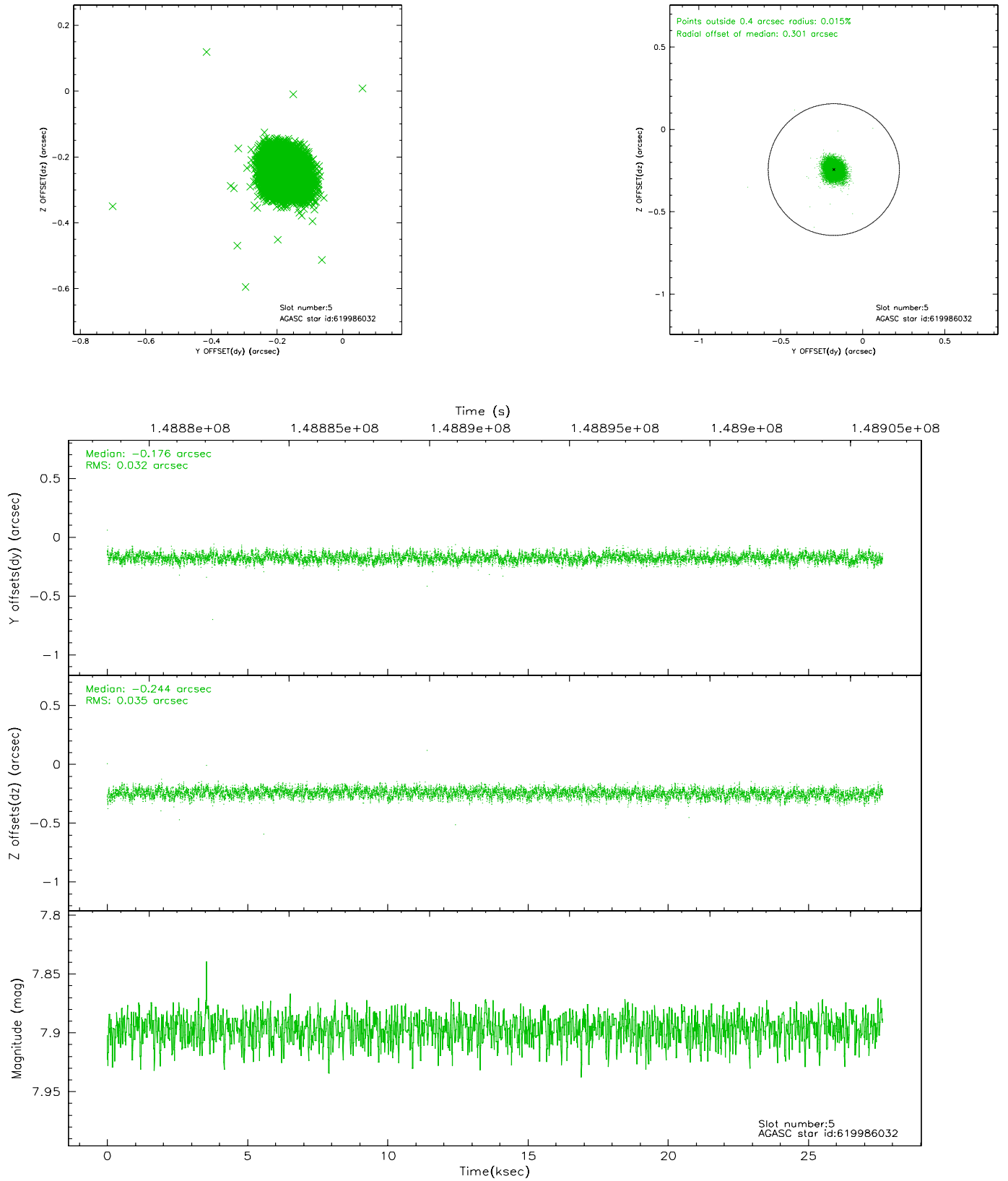
### 2.4.1 Slot 3



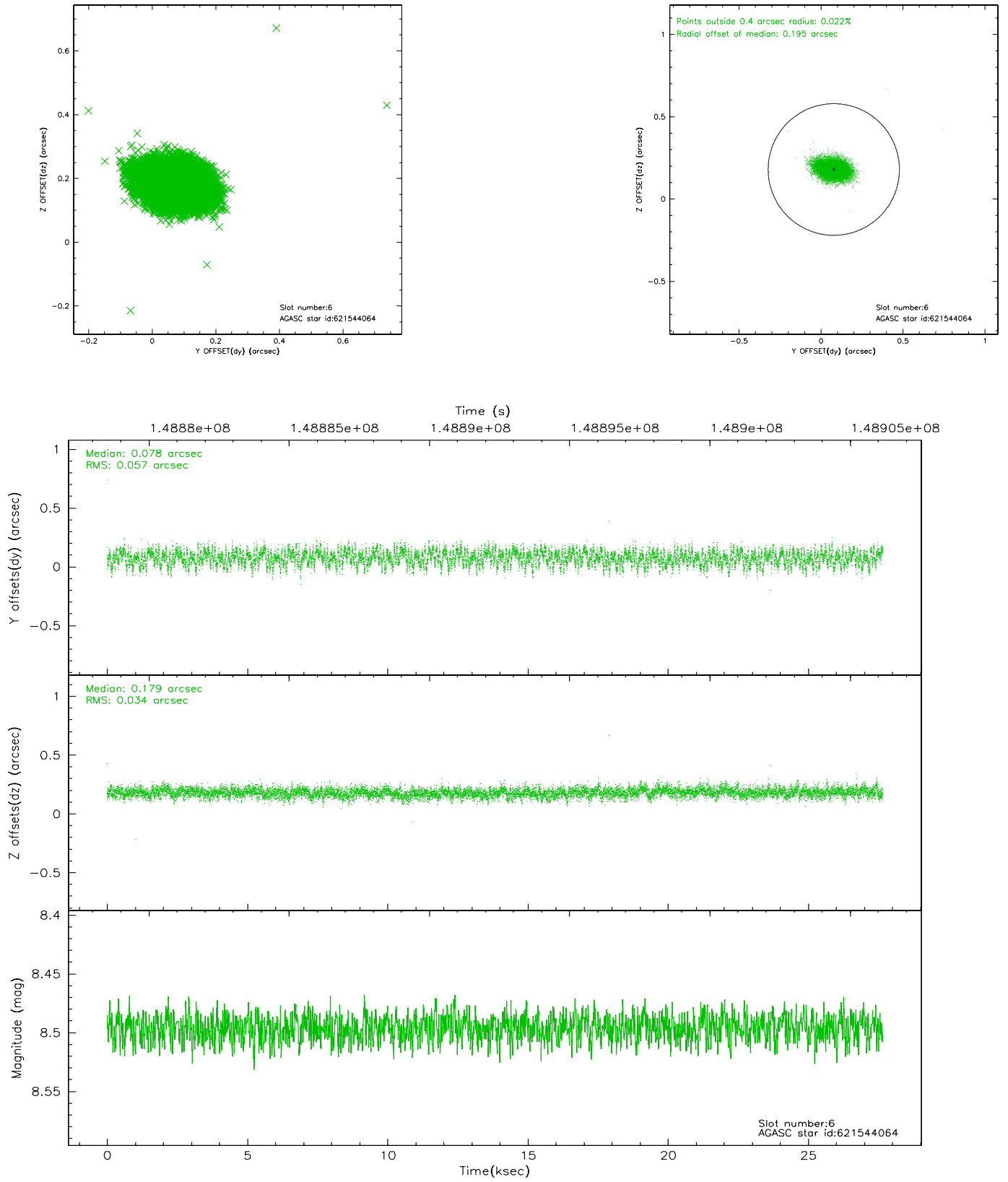
## 2.4.2 Slot 4



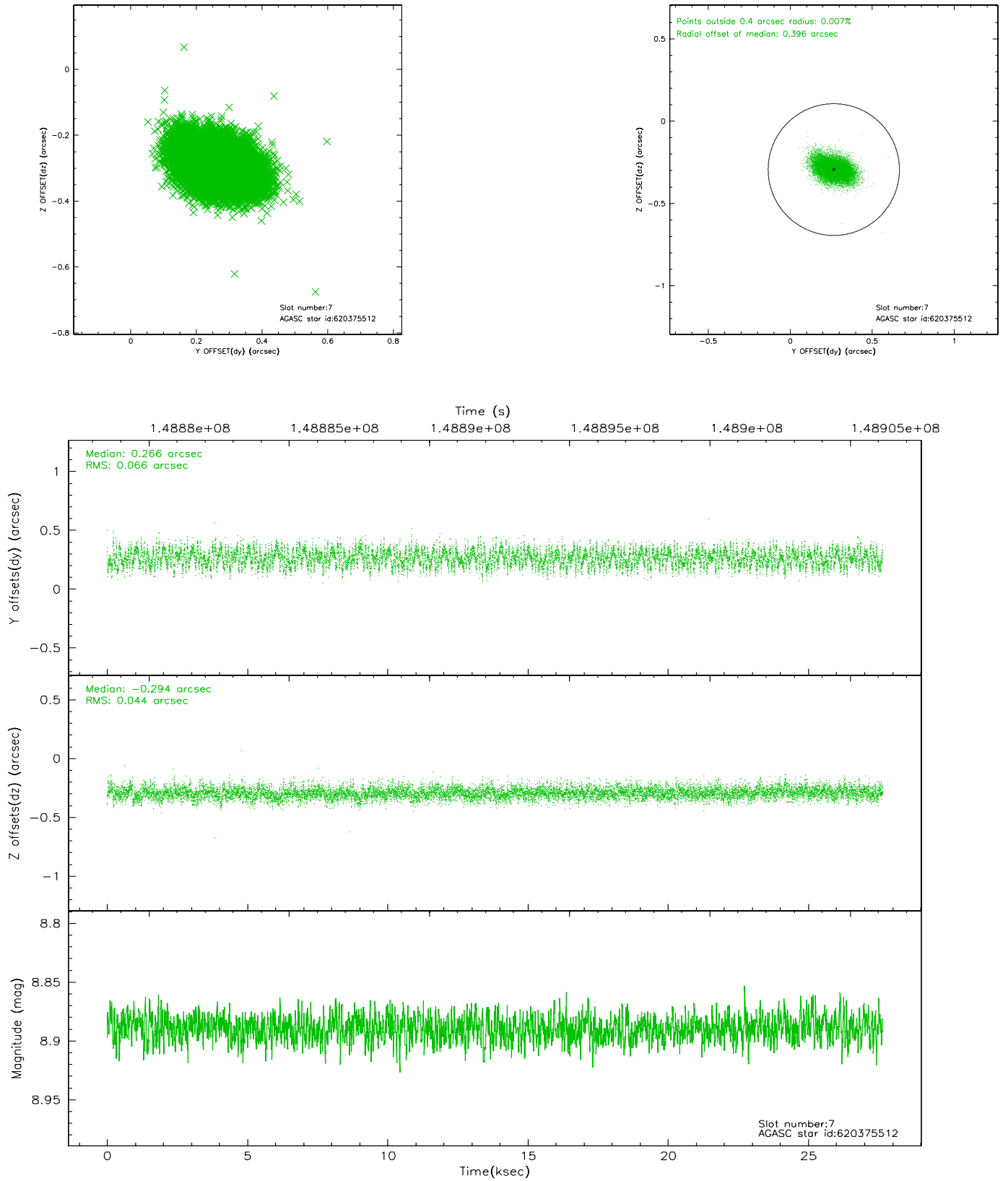
### 2.4.3 Slot 5



## 2.4.4 Slot 6

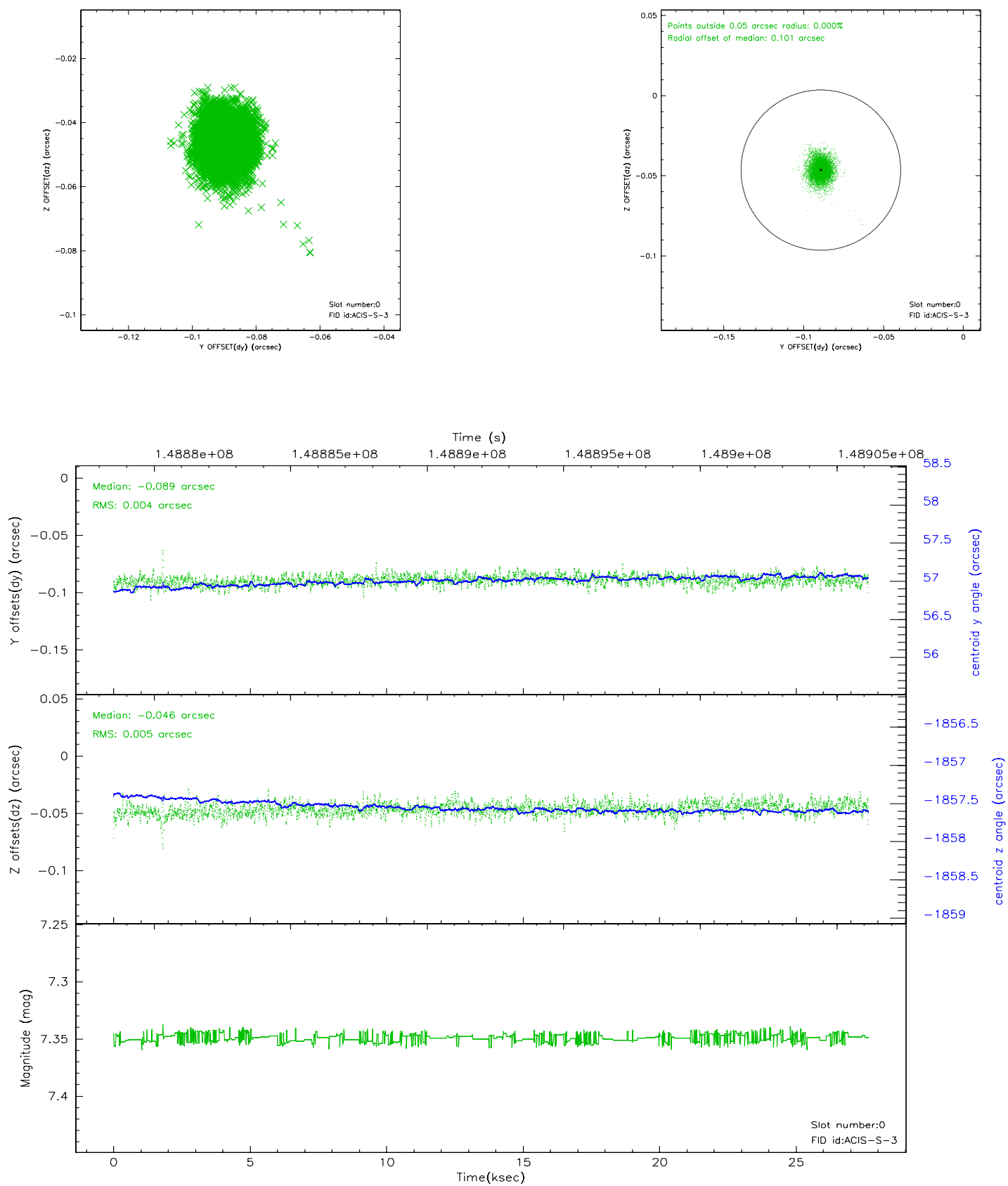


## 2.4.5 Slot 7

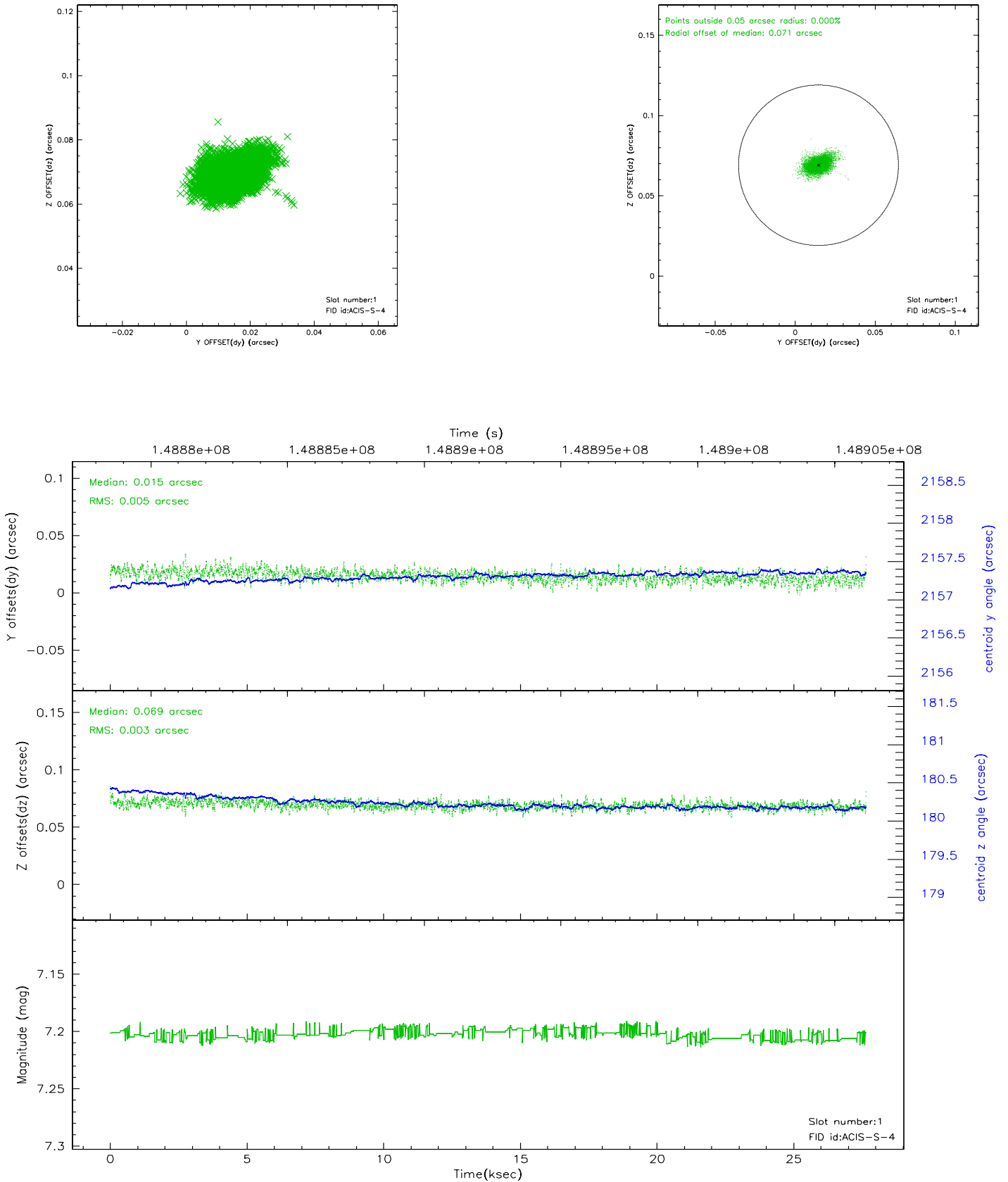


## 2.5 FID Slots

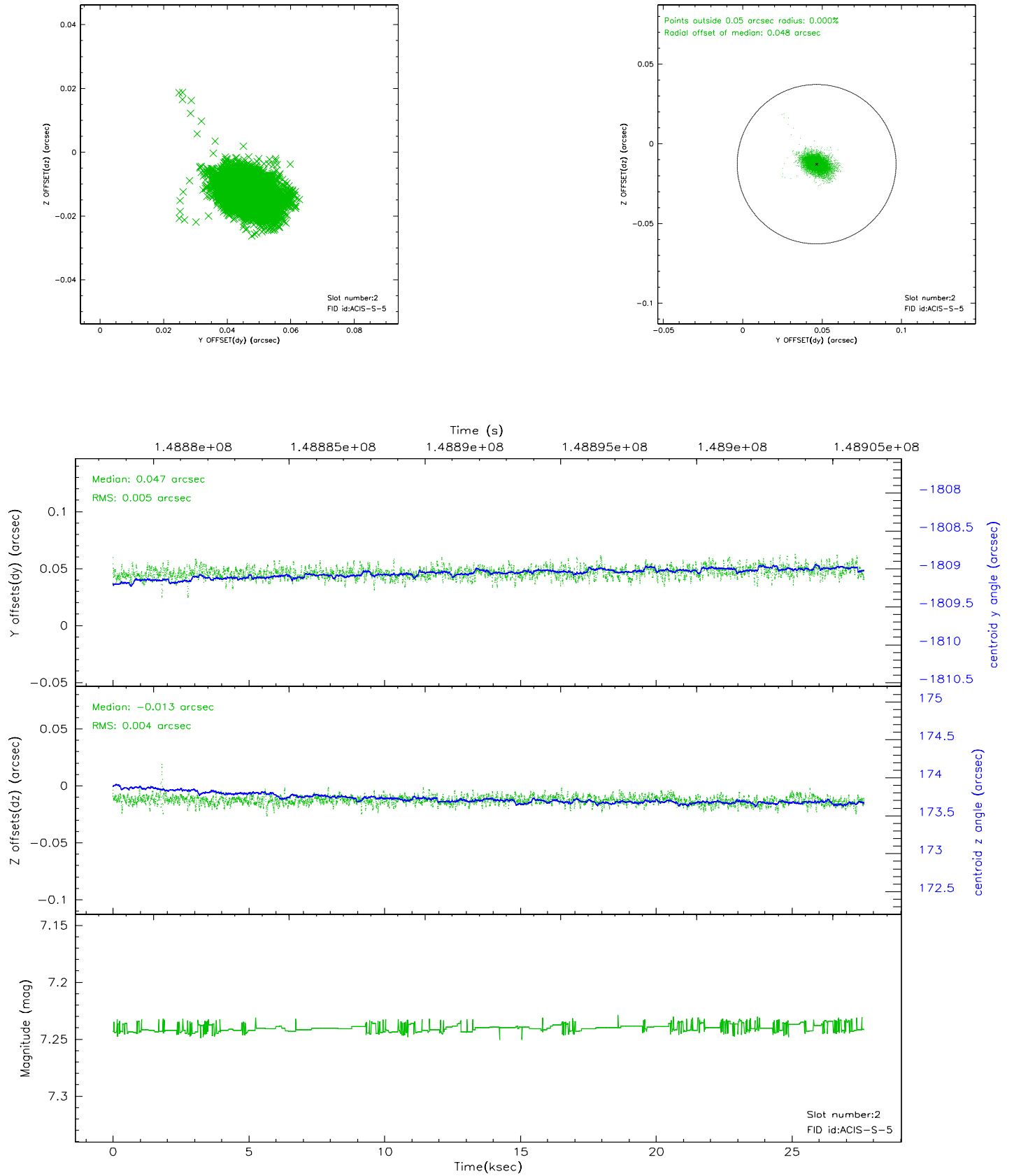
### 2.5.1 Slot 0



## 2.5.2 Slot 1

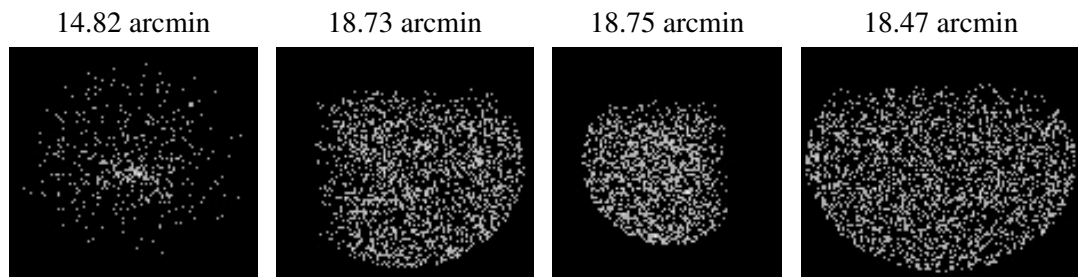


### 2.5.3 Slot 2





### 3 Point Sources



## A Summary

### A.1 Status

V&V Scientist	Jen Lauer
V&V Date (YYYY-MM-DD)	2006.10.04
V&V Edition	1
V&V Disposition and Status	OK
V&V Charge Time	27.106

### A.2 Comments