

V&V Reference Report

L2 ASCDS Version : 8.4.5

Observation 4271 - L2 Version 3
Chandra X-Ray Center

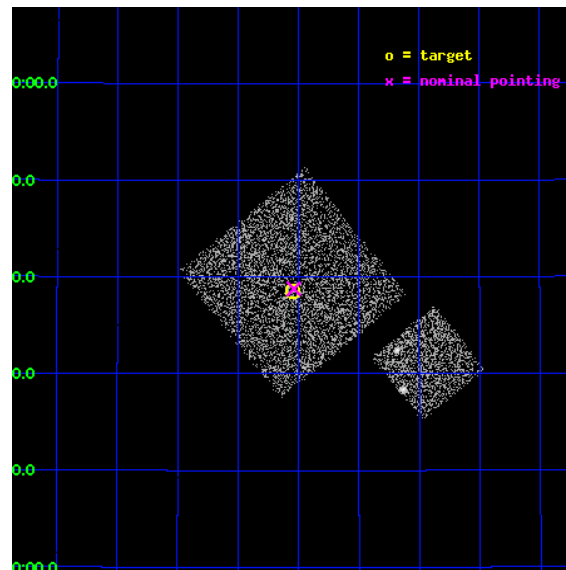
L2 Processing Date : Oct 26 2012

Contents

| | | |
|----------|-------------------------------|-----------|
| 1 | Front | 2 |
| 2 | OBI | 3 |
| 2.1 | OBI | 3 |
| 2.1.1 | Images | 3 |
| 2.1.2 | Bias | 3 |
| 2.1.3 | Parameters | 4 |
| 2.1.4 | Events | 4 |
| 2.2 | Compared Parameters | 5 |
| 2.3 | Aspect | 6 |
| 2.4 | Star Slots | 9 |
| 2.4.1 | Slot 3 | 9 |
| 2.4.2 | Slot 4 | 10 |
| 2.4.3 | Slot 5 | 11 |
| 2.4.4 | Slot 6 | 12 |
| 2.4.5 | Slot 7 | 13 |
| 2.5 | FID Slots | 14 |
| 2.5.1 | Slot 0 | 14 |
| 2.5.2 | Slot 1 | 15 |
| 2.5.3 | Slot 2 | 16 |
| A | Summary | 17 |
| A.1 | Status | 17 |
| A.2 | Comments | 17 |

1 Front

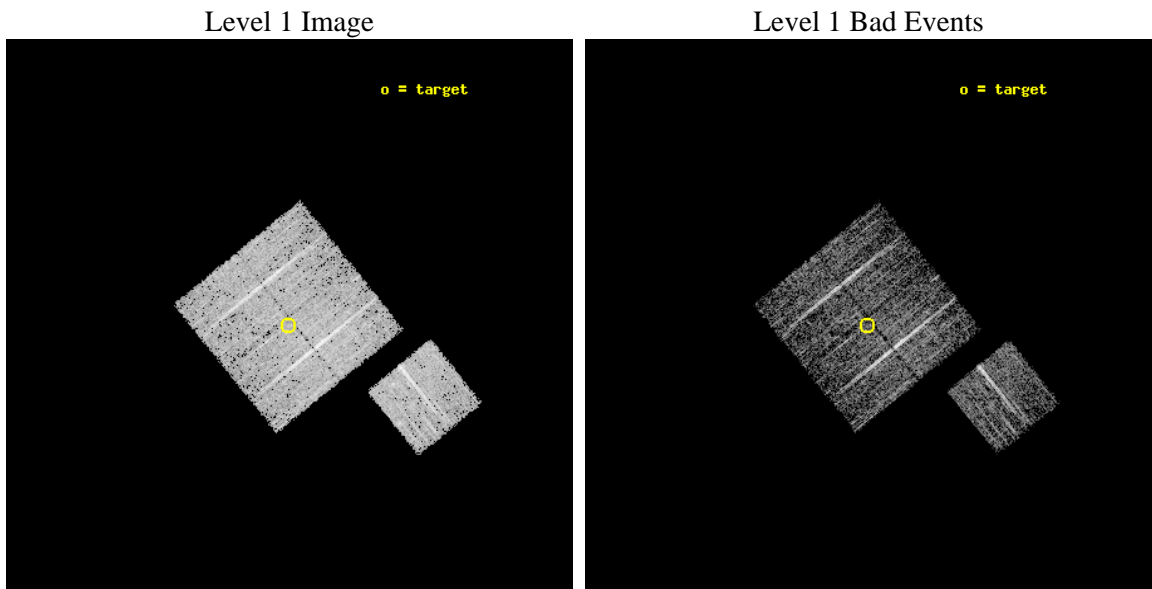
| | | |
|----------|---|---|
| seq_num | 900314 | Sequence number |
| obs_id | 4271 | Observation id |
| title | A CHANDRA WIDE-FIELD SURVEY TO MAP THE COSMIC WEB AND INVESTIGATE THE EVOLUTION OF NUCLEAR ACCRETION | Proposal title |
| observer | Dr. Christine Jones | Principal investigator |
| object | SS44 | Source name |
| dtcycle | 0 | |
| cycle | P | events from which exps? Prim/Second/Both |
| ra_targ | 217.38708 | Observer's specified target RA [deg] |
| dec_targ | 32.642142 | Observer's specified target Dec [deg] |
| ra_nom | 217.38445479634 | Nominal RA [deg] |
| dec_nom | 32.646138673875 | Nominal Dec [deg] |
| roll_nom | 141.01002519914 | Nominal Roll [deg] |
| revision | 3 | Processing version of data |
| ontime | 4919.6999905109 | Sum of GTIs [s] |
| livetime | 4855.4204883045 | Livetime [s] |
| ontime0 | 4919.6999905109 | Sum of GTIs [s] |
| ontime1 | 4919.6999905109 | Sum of GTIs [s] |
| ontime2 | 4919.6999905109 | Sum of GTIs [s] |
| ontime3 | 4919.6999905109 | Sum of GTIs [s] |
| ontime6 | 4919.6999905109 | Sum of GTIs [s] |
| l2events | 9999 | Number of level 2 events |



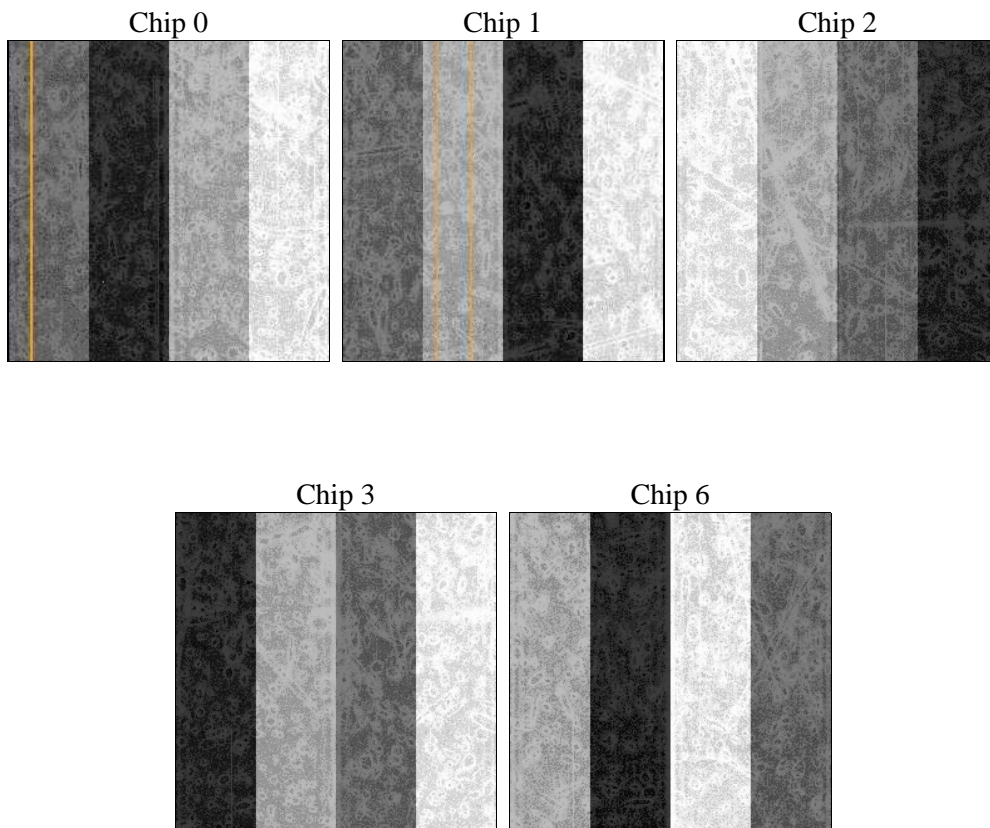
2 OBI

2.1 OBI

2.1.1 Images



2.1.2 Bias



2.1.3 Parameters

| | | | | | |
|----------|---------------------|--------------------------------|----------------|-----------------|---|
| obi_num | 1 | Obi number | sched_exp_time | 4800.000000 | [s] Scheduled observation exposure time |
| ascdsver | 8.4.5 | Processing system revision | ontime | 4919.6999905109 | Sum of GTIs [s] |
| caldsver | 4.5.2 | | ontime0 | 4919.6999905109 | Sum of GTIs [s] |
| date | 2012-10-26T00:16:39 | Date and time of file creation | ontime1 | 4919.6999905109 | Sum of GTIs [s] |
| revision | 3 | Processing version of data | ontime2 | 4919.6999905109 | Sum of GTIs [s] |
| | | | ontime3 | 4919.6999905109 | Sum of GTIs [s] |
| | | | ontime6 | 4919.6999905109 | Sum of GTIs [s] |
| | | | l1events | 119918 | Number of level 1 events |

2.1.4 Events

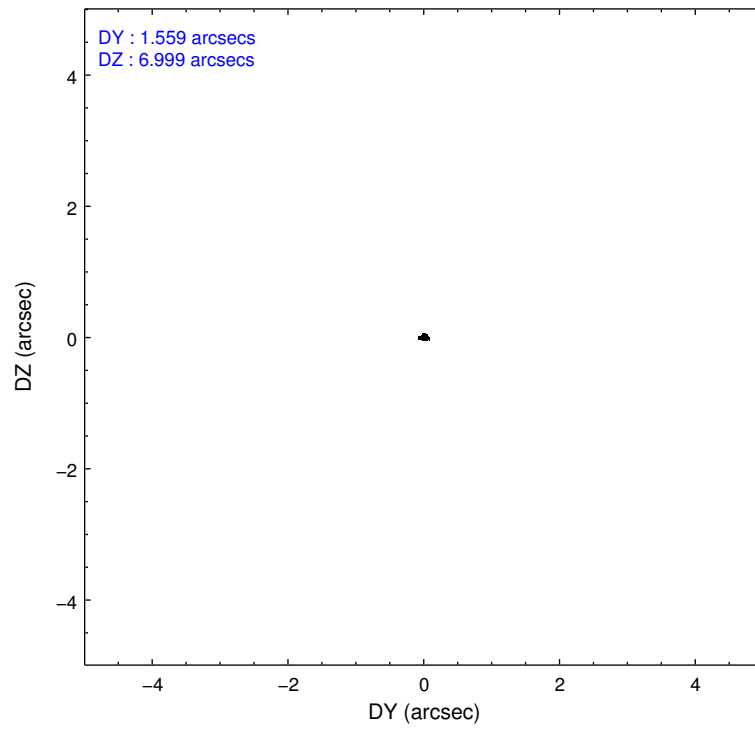
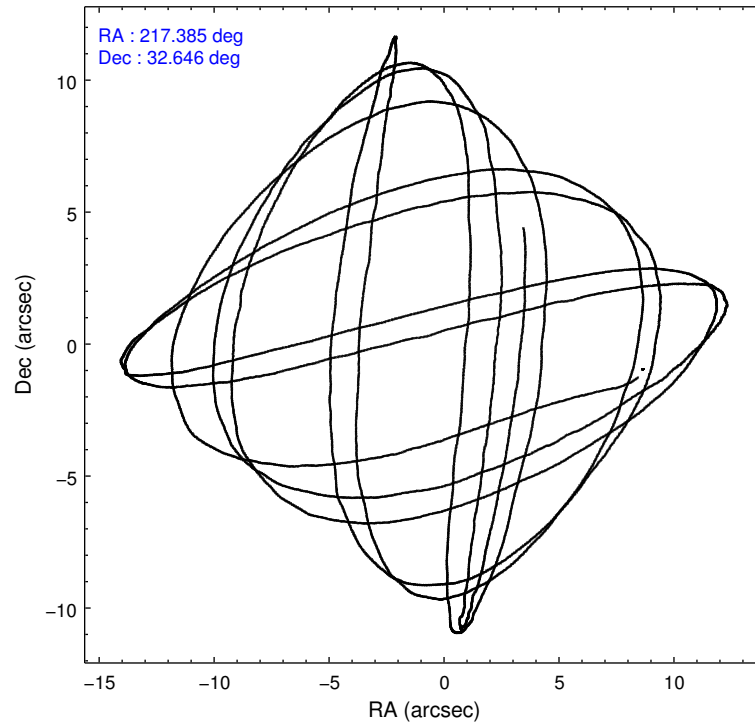
| | ccd 0 | ccd 1 | ccd 2 | ccd 3 | ccd 6 |
|-----------------|-------|-------|-------|-------|-------|
| level 1 events | 22124 | 22946 | 25971 | 23683 | 25194 |
| rejected events | 19780 | 20398 | 23627 | 21562 | 22389 |
| rejected % | 89% | 88% | 90% | 91% | 88% |

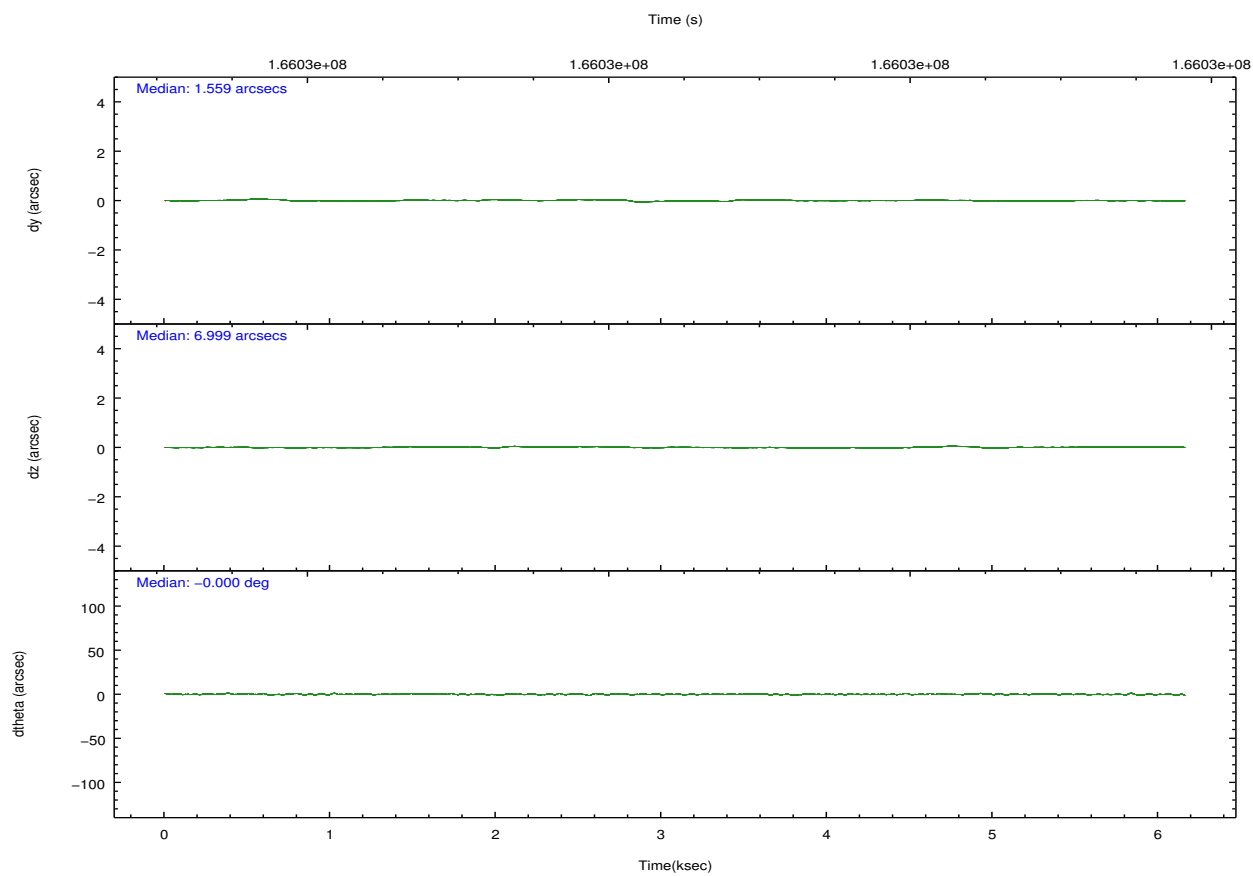
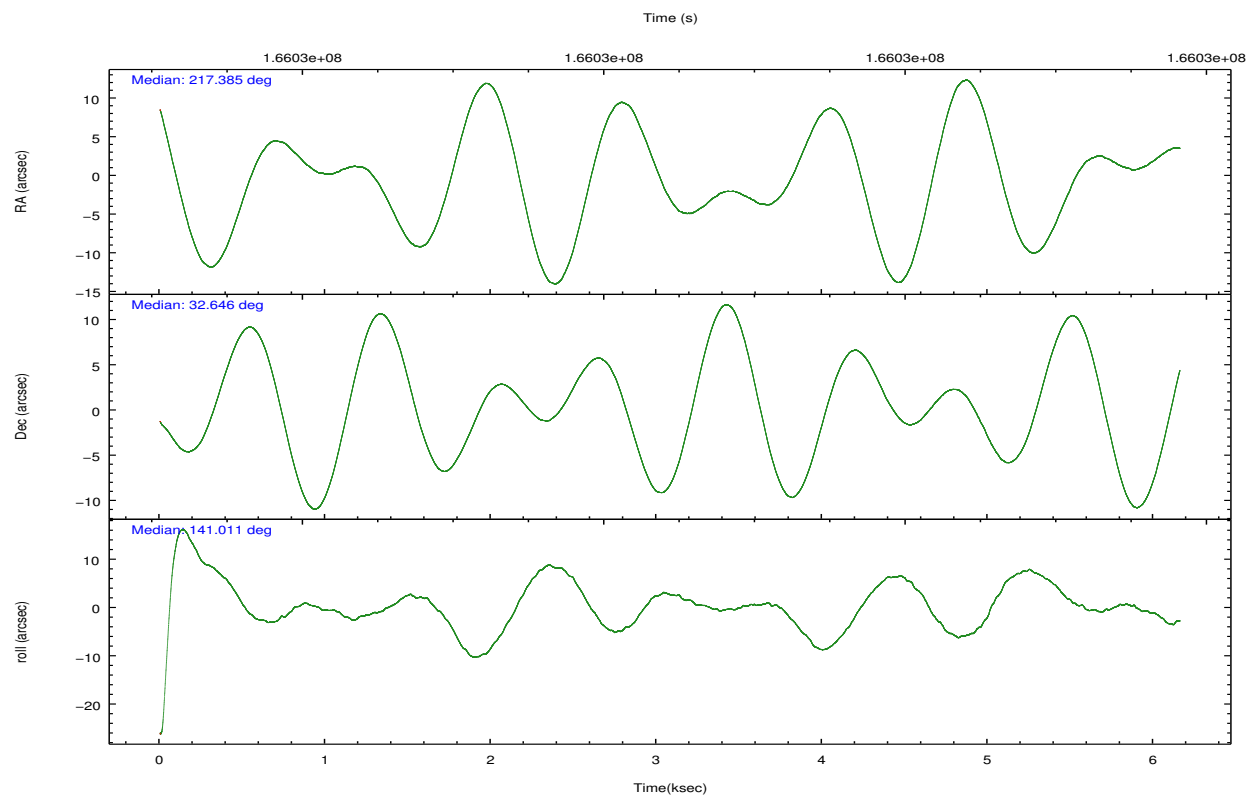
| | ccd 0 | ccd 1 | ccd 2 | ccd 3 | ccd 6 |
|----------------|-------|-------|-------|-------|-------|
| grade 0 events | 851 | 838 | 862 | 779 | 1189 |
| | 3% | 3% | 3% | 3% | 4% |
| grade 1 events | 13 | 10 | 11 | 11 | 8 |
| | 0% | 0% | 0% | 0% | 0% |
| grade 2 events | 552 | 571 | 531 | 478 | 512 |
| | 2% | 2% | 2% | 2% | 2% |
| grade 3 events | 273 | 311 | 280 | 239 | 287 |
| | 1% | 1% | 1% | 1% | 1% |
| grade 4 events | 277 | 322 | 266 | 246 | 312 |
| | 1% | 1% | 1% | 1% | 1% |
| grade 5 events | 721 | 780 | 682 | 808 | 746 |
| | 3% | 3% | 2% | 3% | 2% |
| grade 6 events | 391 | 509 | 406 | 380 | 506 |
| | 1% | 2% | 1% | 1% | 2% |
| grade 7 events | 19046 | 19605 | 22933 | 20742 | 21634 |
| | 86% | 85% | 88% | 87% | 85% |

2.2 Compared Parameters

| Parameter | Planned | Actual | Parameter | Planned | Actual |
|-----------------------------------|---------------------|-----------------------|---------------------------------------|-----------|---------|
| Instrument | ACIS | ACIS | Obspar format version number | 7 | 7 |
| Detector | ACIS-01236 | ACIS-01236 | Obspar file type | PREDICTED | ACTUAL |
| Grating | NONE | NONE | Obspar update status | NONE | UPDATED |
| Data mode | VFAINT | VFAINT | Number of optional ACIS chips dropped | 0 | 0 |
| Observation mode | POINTING | POINTING | On-chip summing requested | N | N |
| [deg] Pointing RA | 217.416626 | 217.3844547963407 | Subarray requested | NONE | NONE |
| [deg] Pointing Dec | 32.642056 | 32.6461386738749 | Alternating exposures requested | N | N |
| [deg] Pointing Roll | 140.784058 | 141.0100251991414 | [s] Primary exposure time | 0.000000 | 3.1 |
| [mm] SIM focus pos | -0.782348 | -0.7809083437167272 | | | |
| [mm] SIM defocus | 0 | 0.001439871863259334 | | | |
| [mm] SIM translation stage pos | -233.592463 | -233.5874344608287 | | | |
| [mm] SIM translation stage offset | 0 | -0.005018542100998502 | | | |
| [s] Observation start time (MET) | 166028725.184000 | 166027179.4018 | | | |
| Observation start date | 2003-04-06T15:04:21 | 2003-04-06T14:39:39 | | | |
| [s] Observation end time (MET) | 166033525.184000 | 166033659.45207 | | | |
| Observation end date | 2003-04-06T16:24:21 | 2003-04-06T16:27:39 | | | |
| Read mode | TIMED | TIMED | | | |

2.3 Aspect



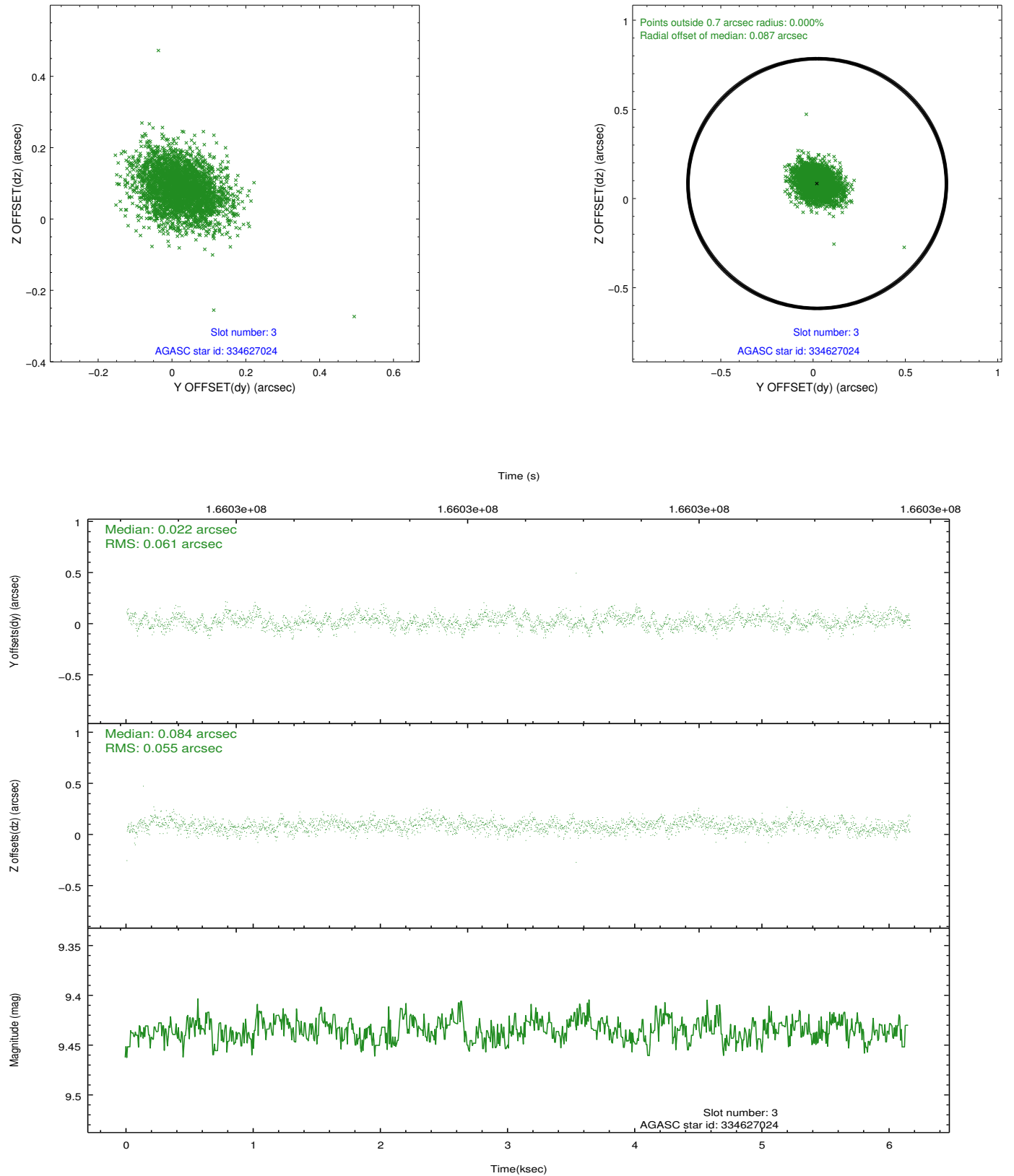


Slot Statistics

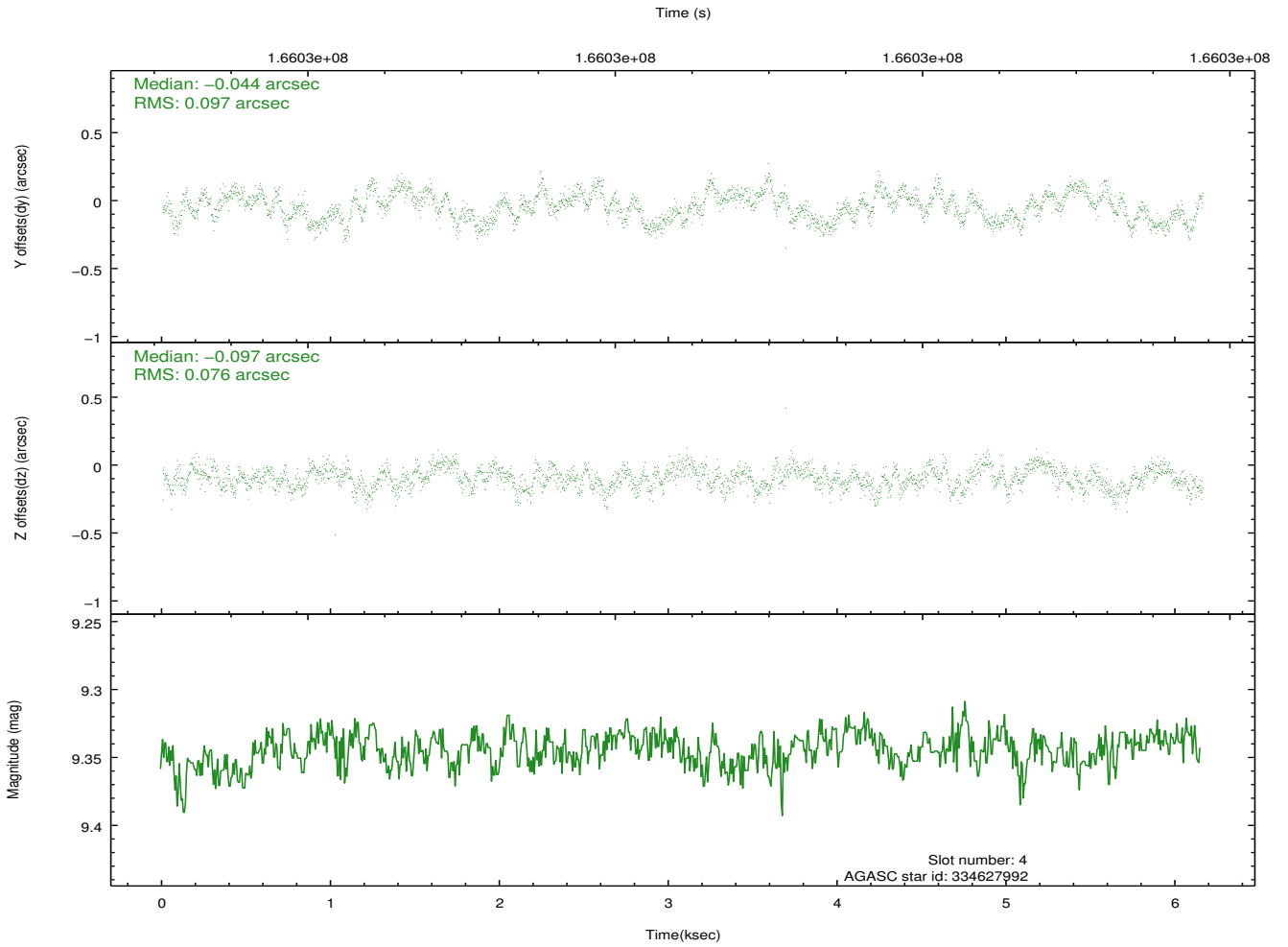
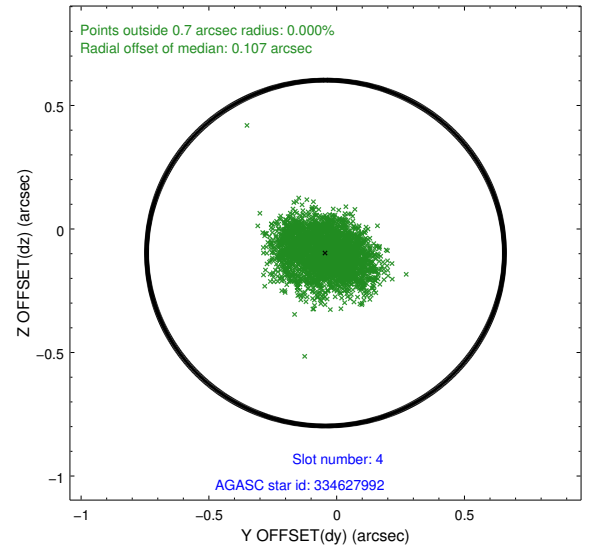
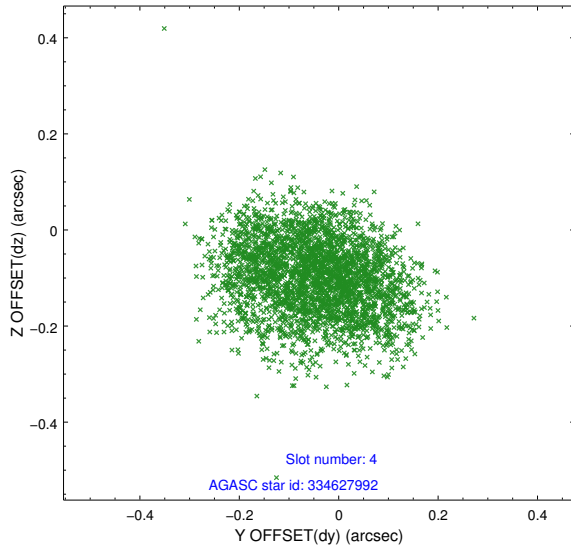
| slot | status | id | mag | n_pts | med_dy | med_dz | dr1 | dr2 | ra | dec | mean_y | mean_z |
|------|--------|-----------|------|-------|--------|--------|-------|-------|------------|-----------|----------|---------|
| 0 | FID | ACIS-I-1 | 7.25 | 1503 | 0.008 | 0.012 | 0.006 | 0.010 | 0.000000 | 0.000000 | 938.26 | -830.41 |
| 1 | FID | ACIS-I-5 | 7.24 | 1503 | -0.076 | 0.052 | 0.006 | 0.010 | 0.000000 | 0.000000 | -1809.35 | 1066.72 |
| 2 | FID | ACIS-I-6 | 7.26 | 1503 | -0.023 | 0.006 | 0.006 | 0.011 | 0.000000 | 0.000000 | 402.80 | 1712.21 |
| 3 | GUIDE | 334627024 | 9.44 | 3004 | 0.022 | 0.084 | 0.086 | 0.145 | 217.318801 | 32.278221 | -597.53 | 1202.92 |
| 4 | GUIDE | 334627992 | 9.34 | 3003 | -0.044 | -0.097 | 0.134 | 0.205 | 216.814353 | 32.274859 | 587.50 | 2179.35 |
| 5 | GUIDE | 334632896 | 9.68 | 3000 | 0.098 | -0.025 | 0.148 | 0.228 | 217.366197 | 31.879526 | -1616.15 | 2224.93 |
| 6 | GUIDE | 335022112 | 9.22 | 3003 | -0.047 | -0.035 | 0.099 | 0.156 | 216.659296 | 32.794758 | 2127.58 | 1017.42 |
| 7 | GUIDE | 335021200 | 8.87 | 3004 | -0.025 | 0.072 | 0.092 | 0.150 | 216.377257 | 32.627867 | 2419.76 | 2020.37 |

2.4 Star Slots

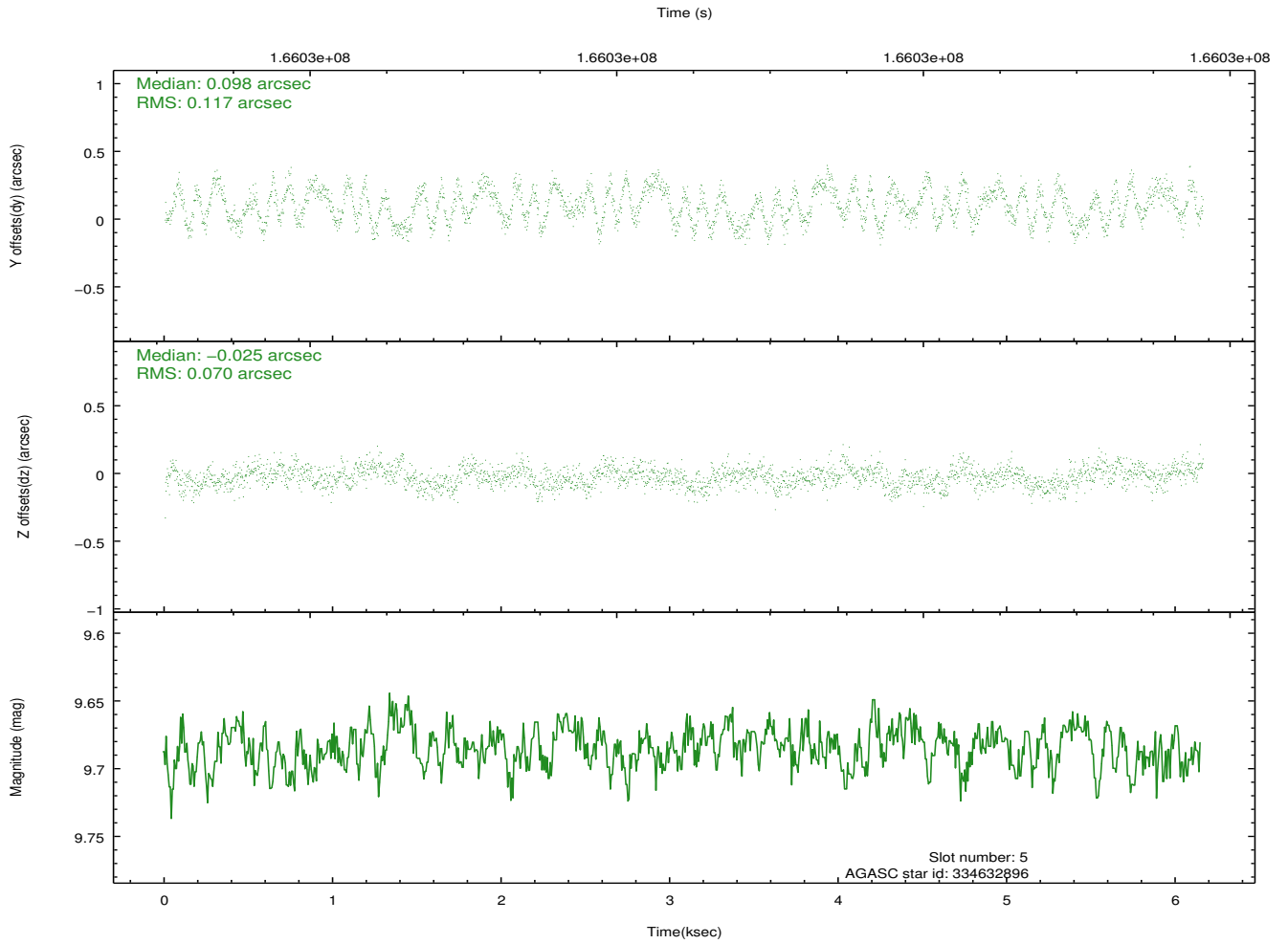
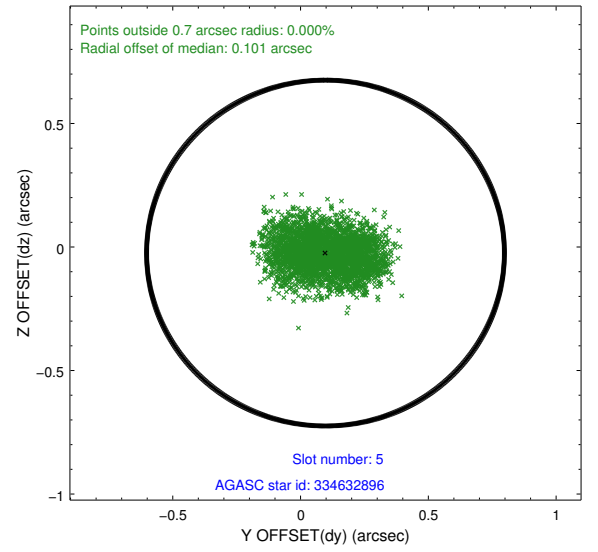
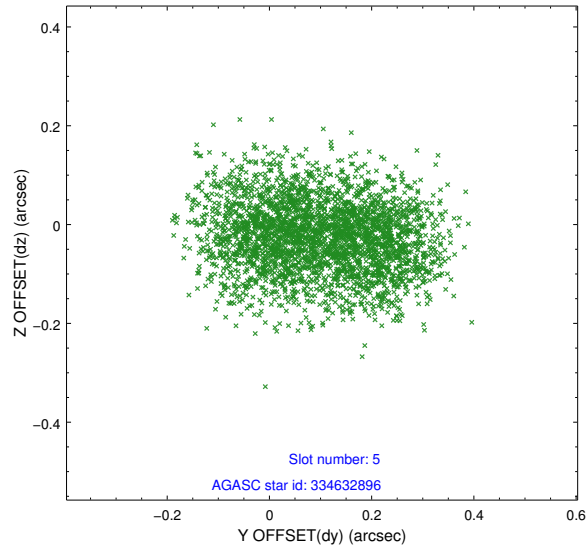
2.4.1 Slot 3



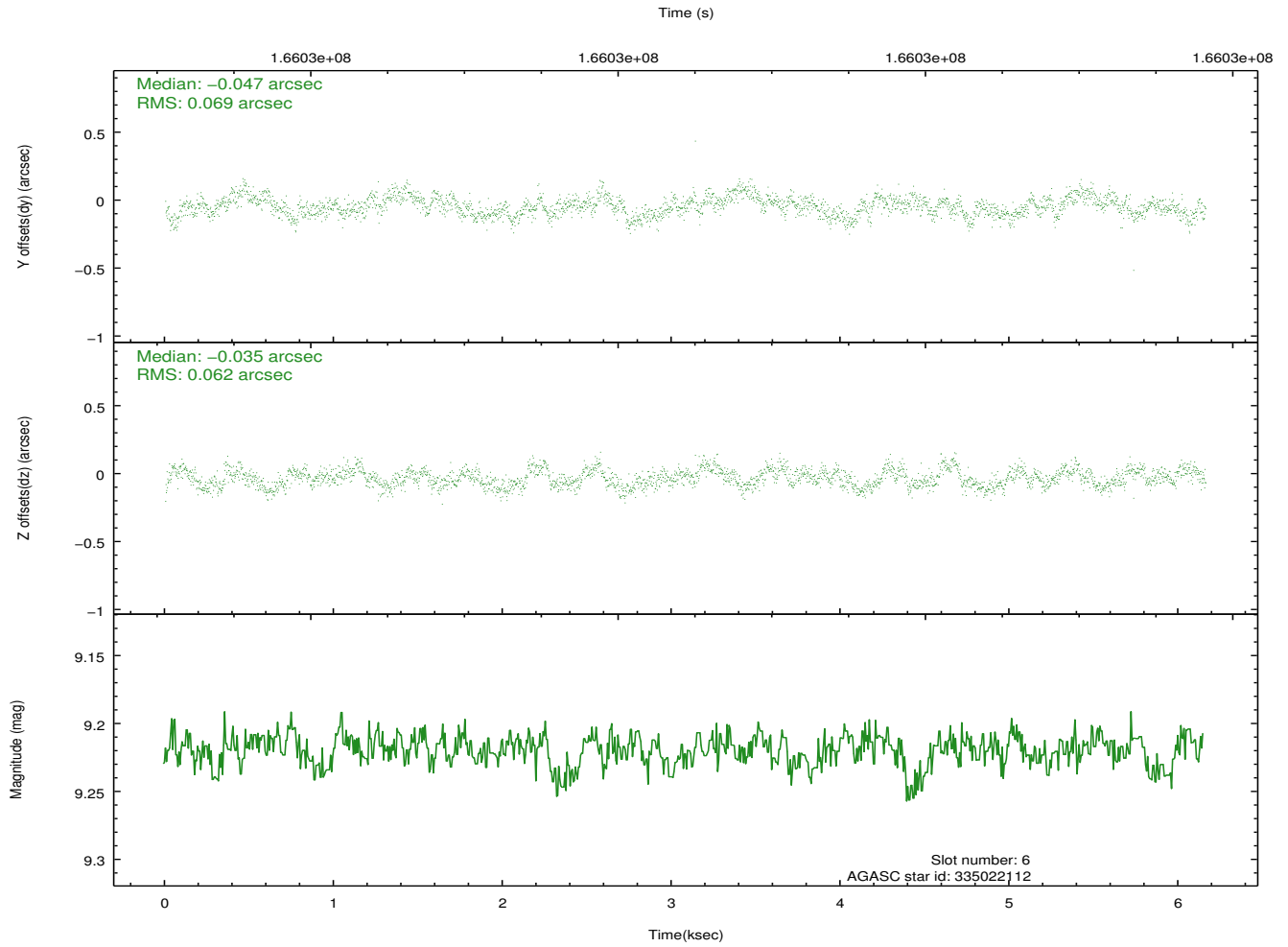
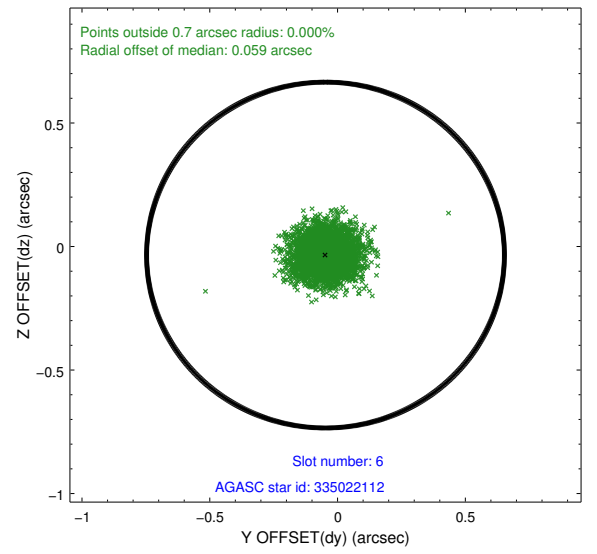
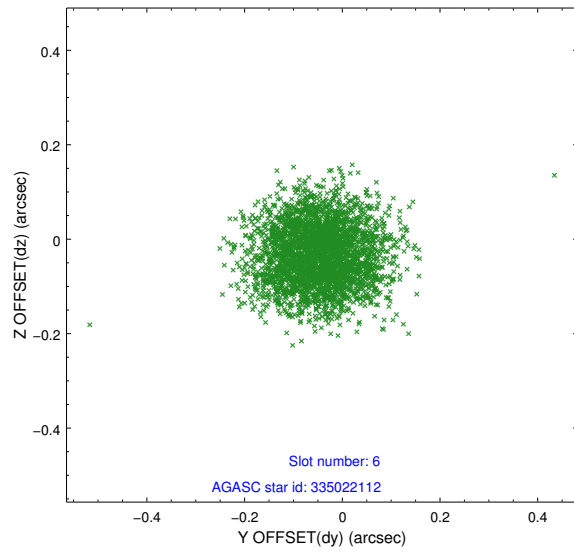
2.4.2 Slot 4



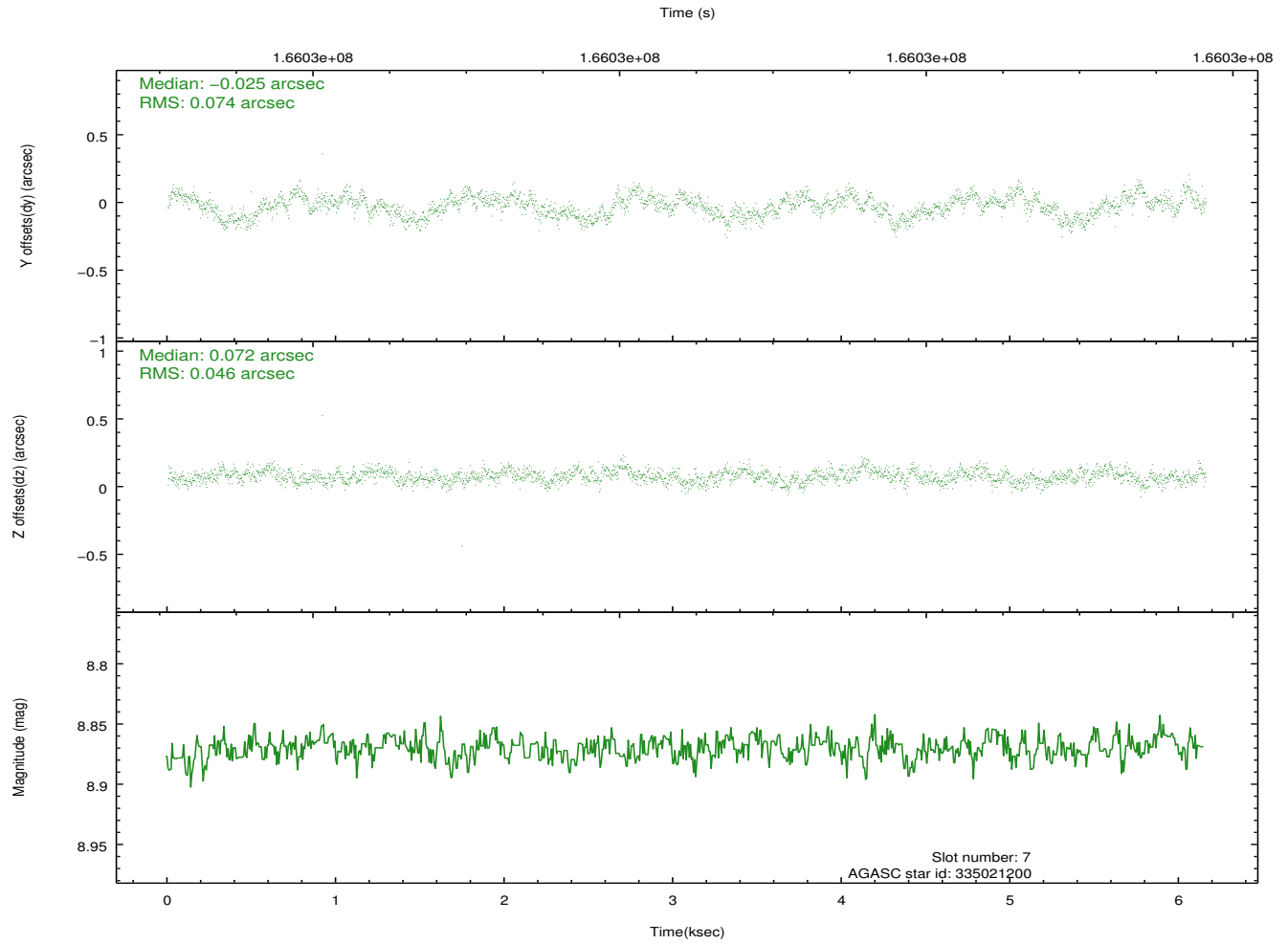
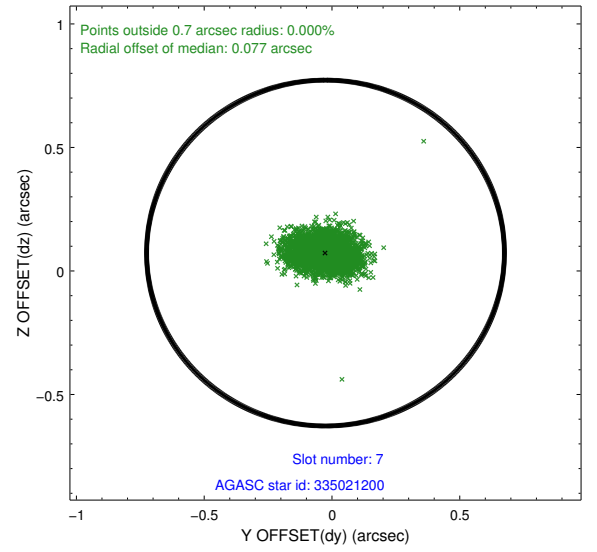
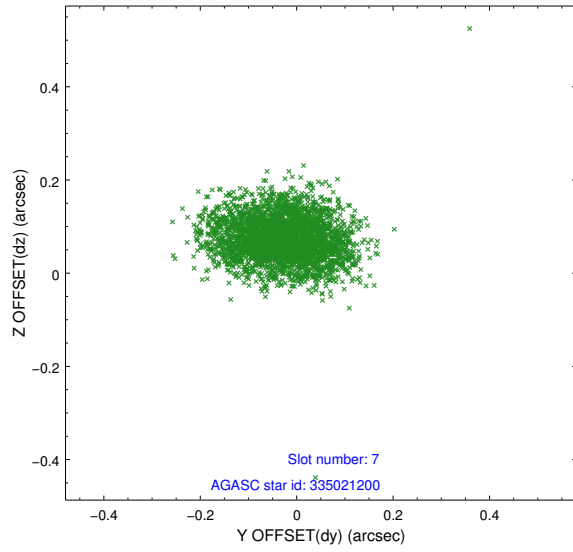
2.4.3 Slot 5



2.4.4 Slot 6

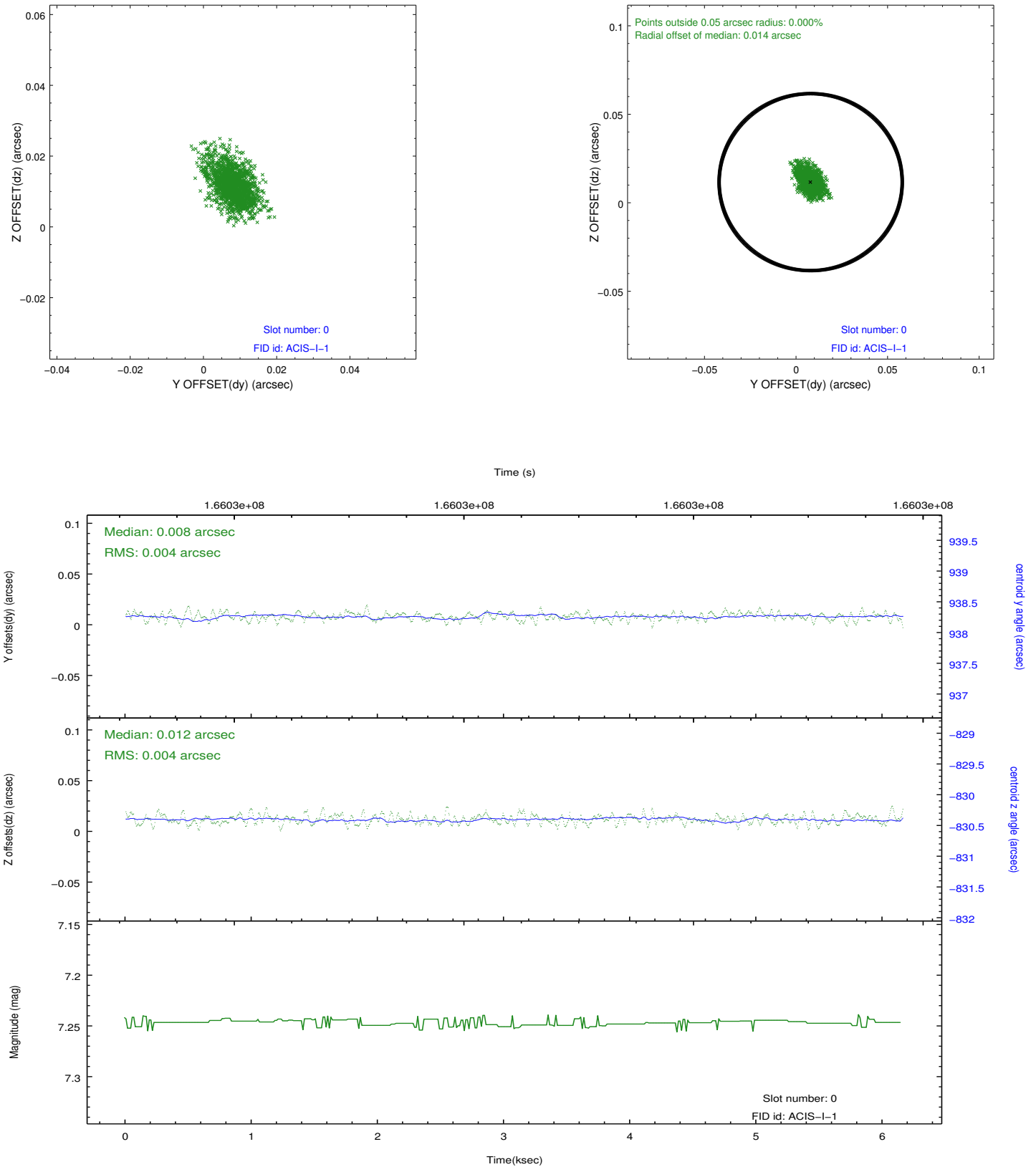


2.4.5 Slot 7

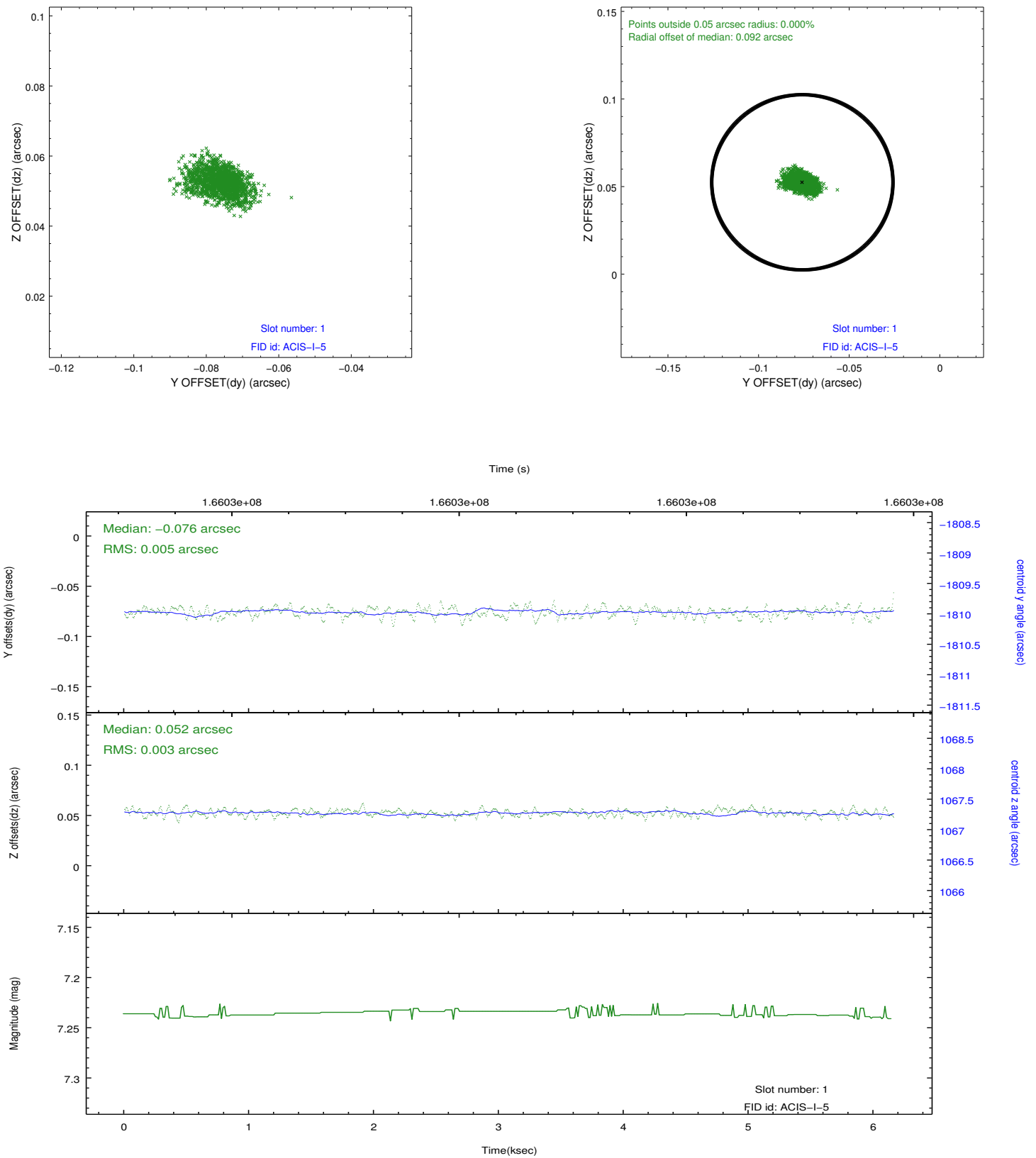


2.5 FID Slots

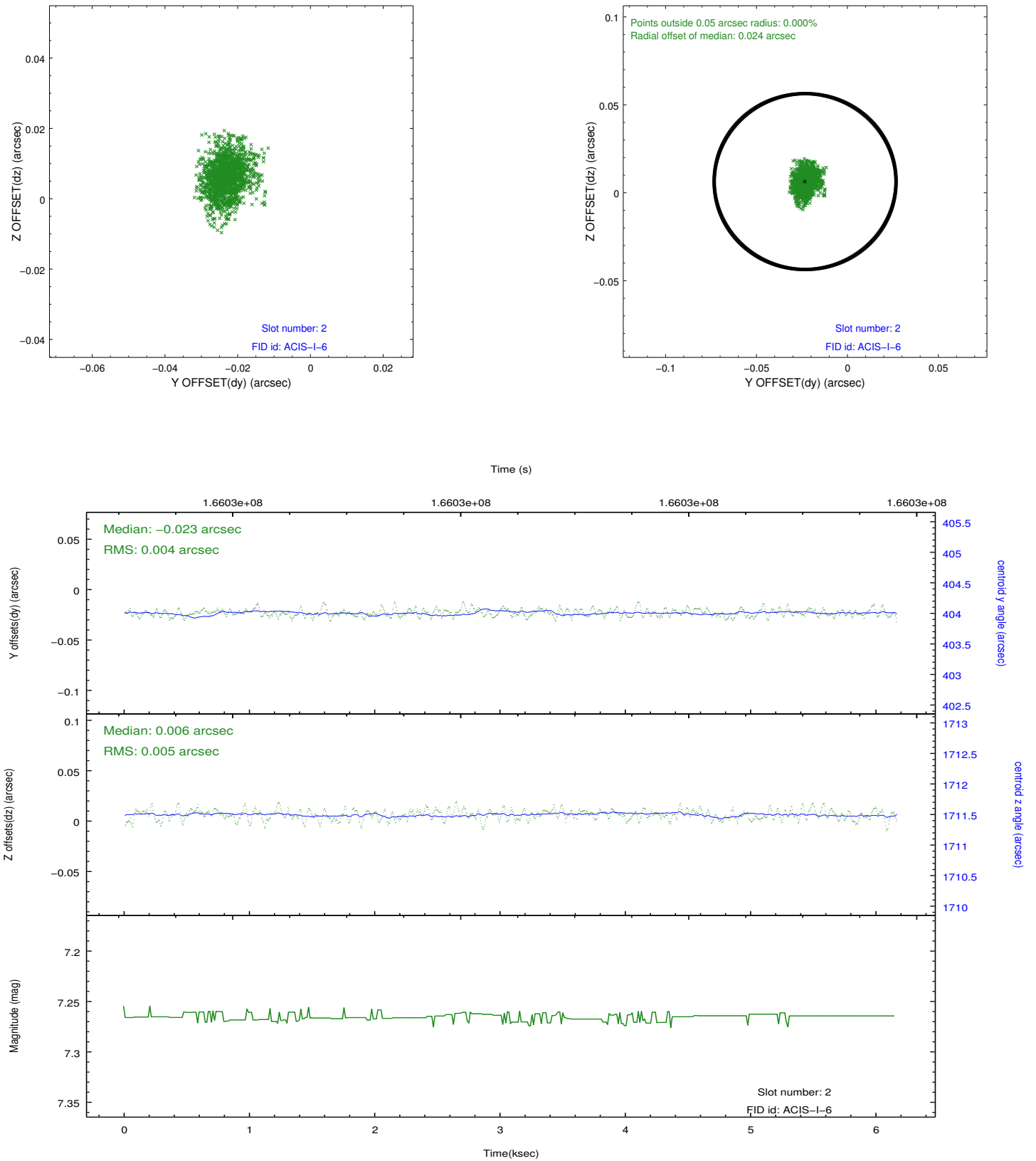
2.5.1 Slot 0



2.5.2 Slot 1



2.5.3 Slot 2



A Summary

A.1 Status

| | |
|----------------------------|---------------|
| V&V Scientist | Beth Sundheim |
| V&V Date (YYYY-MM-DD) | 2012.11.13 |
| V&V Edition | 1 |
| V&V Disposition and Status | OK |
| V&V Charge Time | 4.922 |

A.2 Comments