

V&V Reference Report

L2 ASCDS Version : 7.6.8

Observation 4221 - L2 Version 001
Chandra X-Ray Center

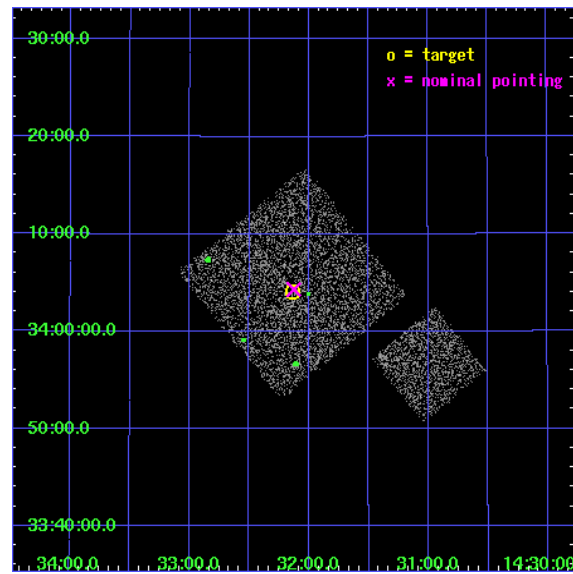
L2 Processing Date : Jul 29 2006

Contents

1	Front	2
2	OBI	3
2.1	OBI	3
2.1.1	Images	3
2.1.2	Bias	3
2.1.3	Parameters	4
2.1.4	Events	4
2.2	Compared Parameters	5
2.3	Aspect	6
2.4	Star Slots	9
2.4.1	Slot 3	9
2.4.2	Slot 4	10
2.4.3	Slot 5	11
2.4.4	Slot 6	12
2.4.5	Slot 7	13
2.5	FID Slots	14
2.5.1	Slot 0	14
2.5.2	Slot 1	15
2.5.3	Slot 2	16
3	Point Sources	17
A	Summary	18
A.1	Status	18
A.2	Comments	18

1 Front

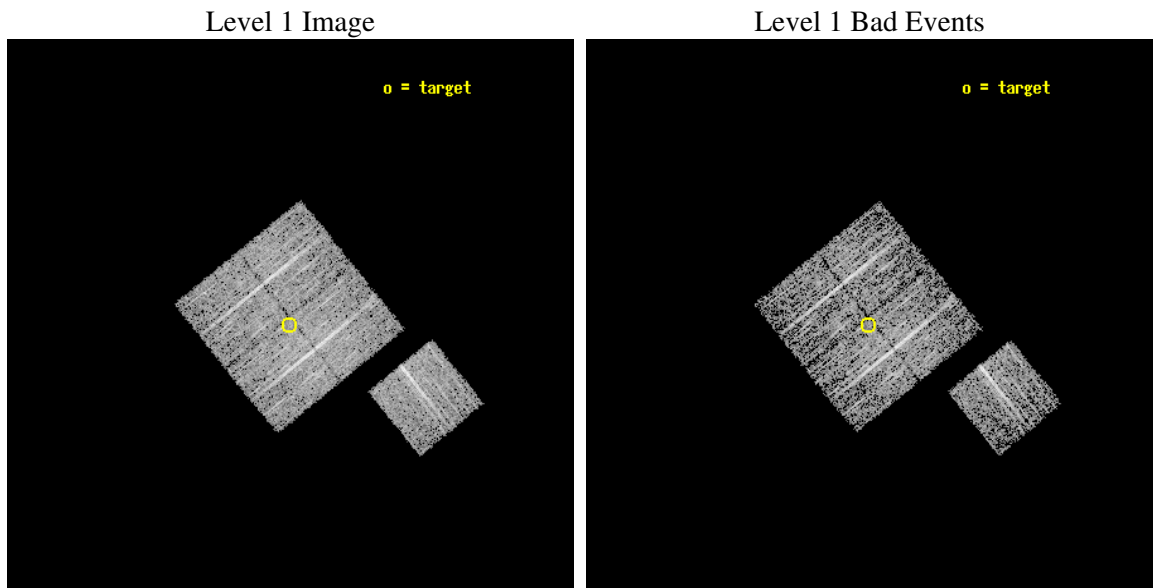
seq_num	900264
obs_id	4221
title	A CHANDRA WIDE-FIELD SURVEY TO MAP THE COSMIC WEB AND INVESTIGATE THE EVOLUTION OF NUCLEAR ACCRETION
observer	Dr. Christine Jones
object	SS12
dtcycle	0
cycle	P
ra_targ	218.034014
dec_targ	34.068
ra_nom	218.03140979311
dec_nom	34.072088212251
roll_nom	141.01015102653
revision	2
ontime	4674.7999910116
livetime	4613.7202875914
ontime0	4674.7999910116
ontime1	4674.7999910116
ontime2	4674.7999910116
ontime3	4674.7999910116
ontime6	4674.7999910116
l2events	9222



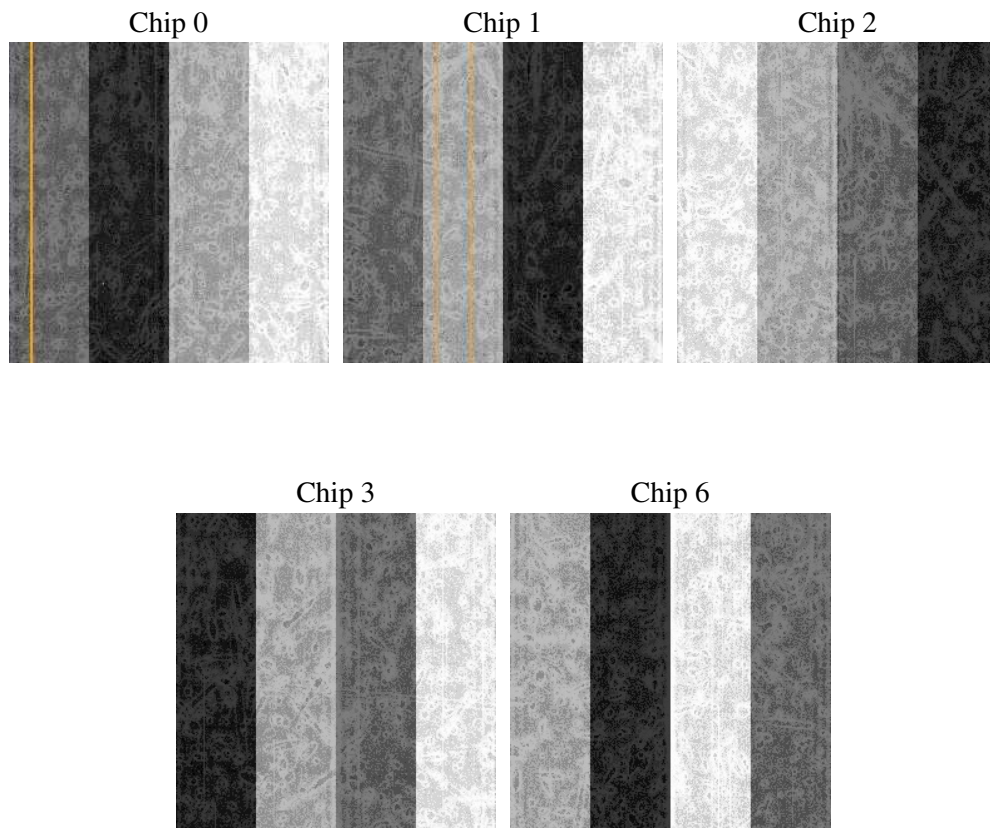
2 OBI

2.1 OBI

2.1.1 Images



2.1.2 Bias



2.1.3 Parameters

obi_num	1
ascdsver	7.6.8
caldbver	3.2.2
date	2006-07-29T21:44:50
revision	2

sched_exp_time	4900.000000
ontime	4680.1052072942
ontime0	4680.1051873565
ontime1	4680.1052072942
ontime2	4680.1052072942
ontime3	4680.1052072942
ontime6	4680.1052072942
llevents	115414

2.1.4 Events

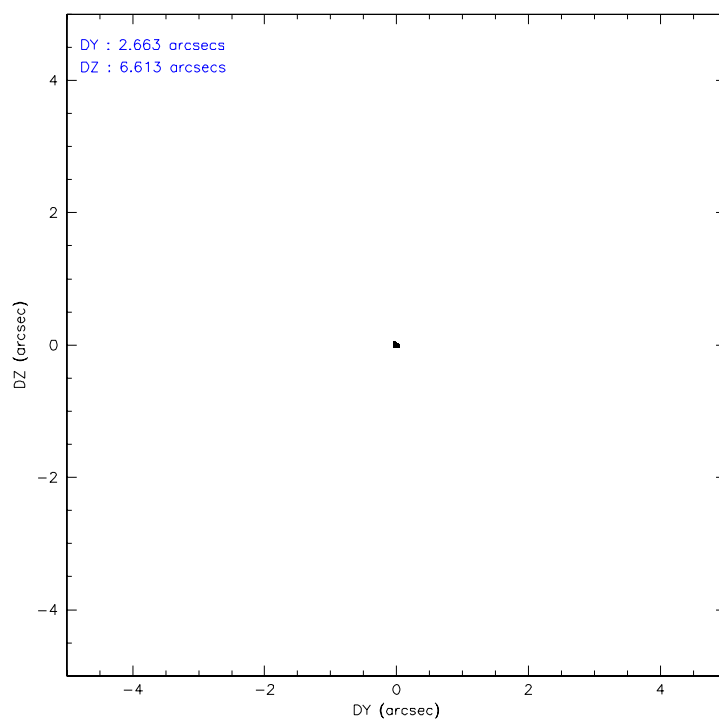
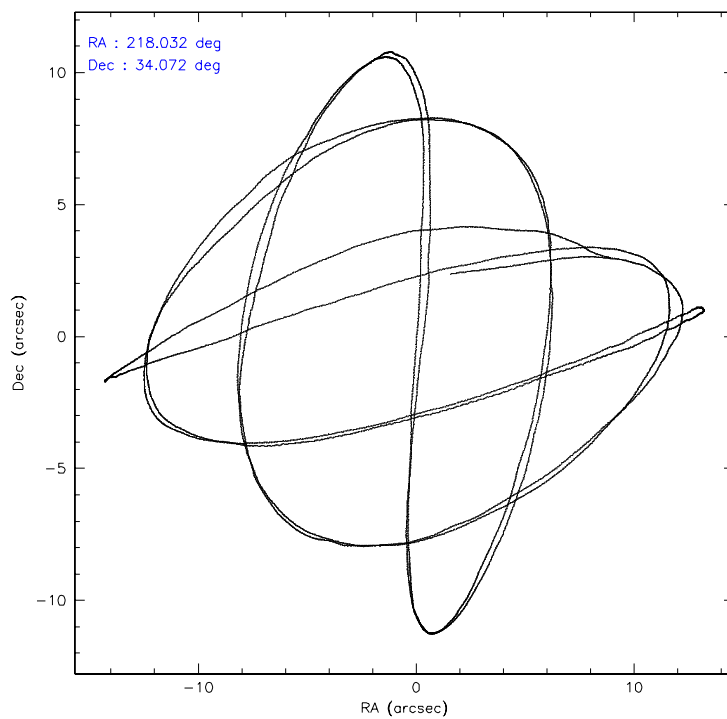
	ccd 0	ccd 1	ccd 2	ccd 3	ccd 6
level 1 events	22657	21381	24192	24387	22797
rejected events	20499	19000	21984	22191	20521
rejected %	90%	88%	90%	90%	90%

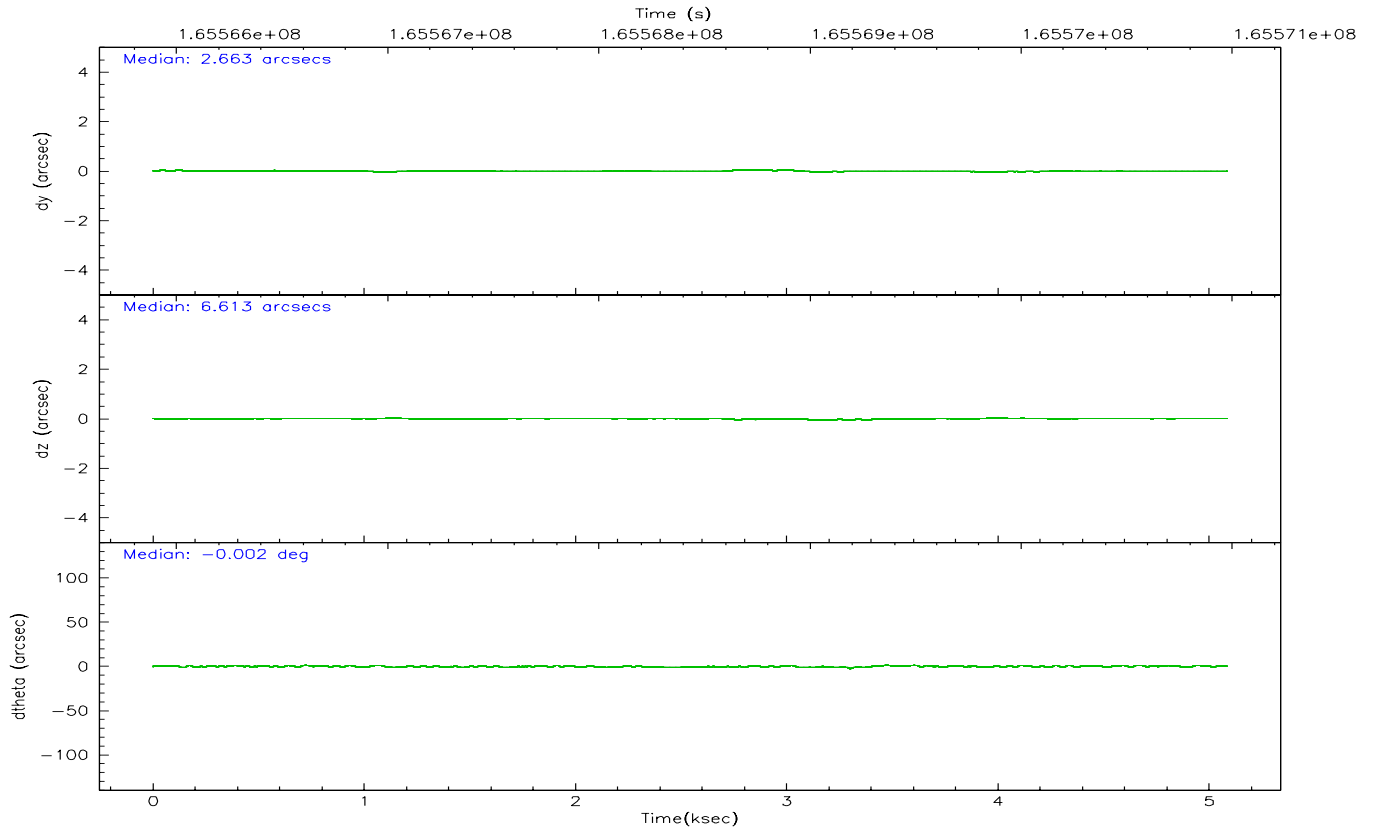
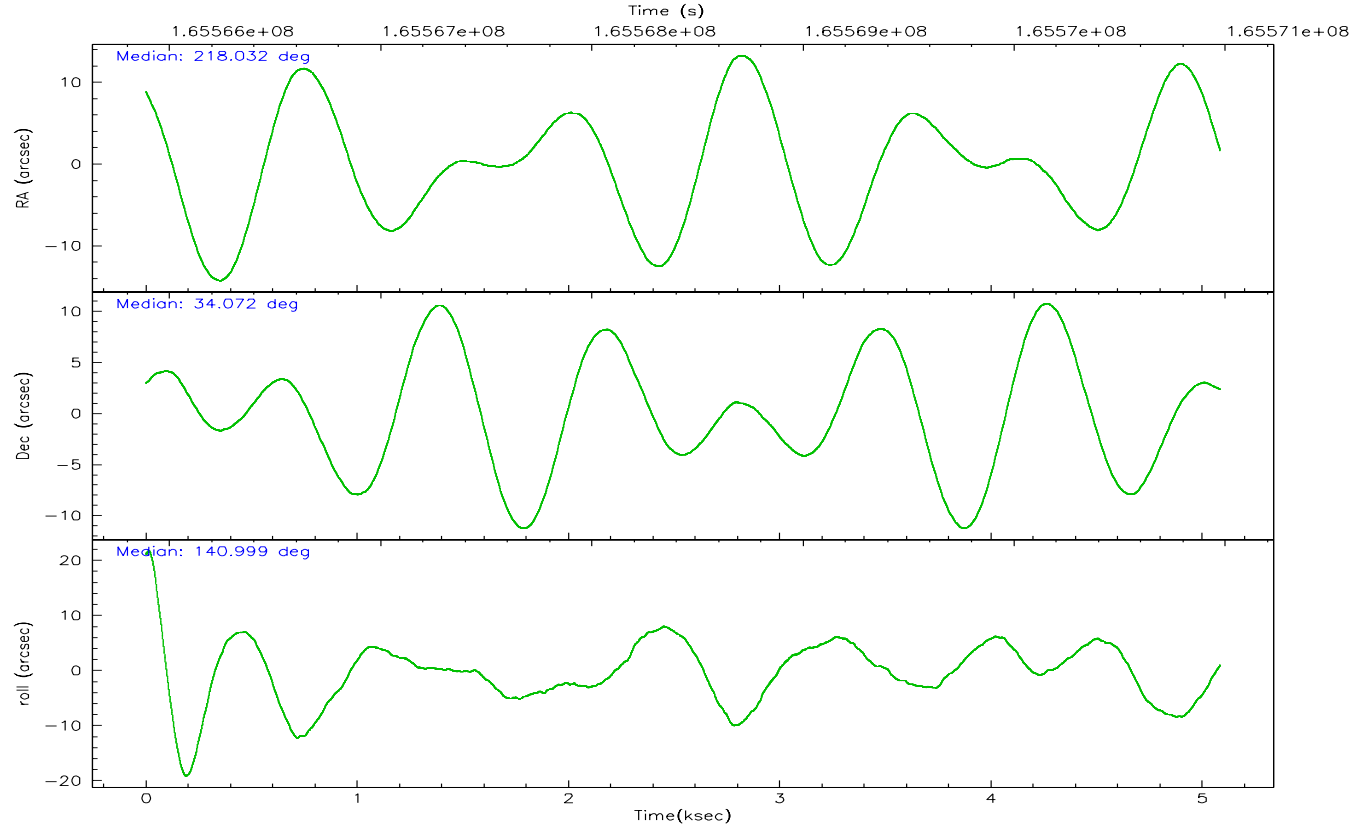
	ccd 0	ccd 1	ccd 2	ccd 3	ccd 6
grade 0 events	790	854	834	856	777
	3%	3%	3%	3%	3%
grade 1 events	11	9	14	13	6
	0%	0%	0%	0%	0%
grade 2 events	485	473	490	456	506
	2%	2%	2%	1%	2%
grade 3 events	224	288	239	303	264
	0%	1%	0%	1%	1%
grade 4 events	260	291	233	222	283
	1%	1%	0%	0%	1%
grade 5 events	673	711	667	802	754
	2%	3%	2%	3%	3%
grade 6 events	399	476	415	360	446
	1%	2%	1%	1%	1%
grade 7 events	19815	18279	21300	21375	19761
	87%	85%	88%	87%	86%

2.2 Compared Parameters

Parameter	Planned	Actual	Parameter	Planned	Actual
Instrument	ACIS	ACIS	Obspar format version number	6	6
Detector	ACIS-01236	ACIS-01236	Obspar file type	PREDICTED	ACTUAL
Grating	NONE	NONE	Obspar update status	NONE	UPDATED
Data mode	VFAINT	VFAINT	On-chip summing requested	N	N
Observation mode	POINTING	POINTING	Subarray requested	NONE	NONE
Pointing RA	218.064056	218.0314097931106	Alternating exposures requested	N	N
Pointing Dec	34.067923	34.07208821225088	Primary exposure time	0.000000	3.1
Pointing Roll	140.783174	141.0101510265311			
SIM focus pos (mm)	-0.782348	-0.7809083437167272			
SIM defocus (mm)	0	0.001439871863259334			
SIM translation stage pos (mm)	-233.592463	-233.5874344608287			
SIM translation stage offset (mm)	0	-0.005018542100998502			
Observation start time	165566074.184000	165565697.73232			
Observation start date	2003-04-01T06:33:30	2003-04-01T06:28:17			
Observation end time	165570974.184000	165571107.68255			
Observation end date	2003-04-01T07:55:10	2003-04-01T07:58:27			
Read mode	TIMED	TIMED			

2.3 Aspect



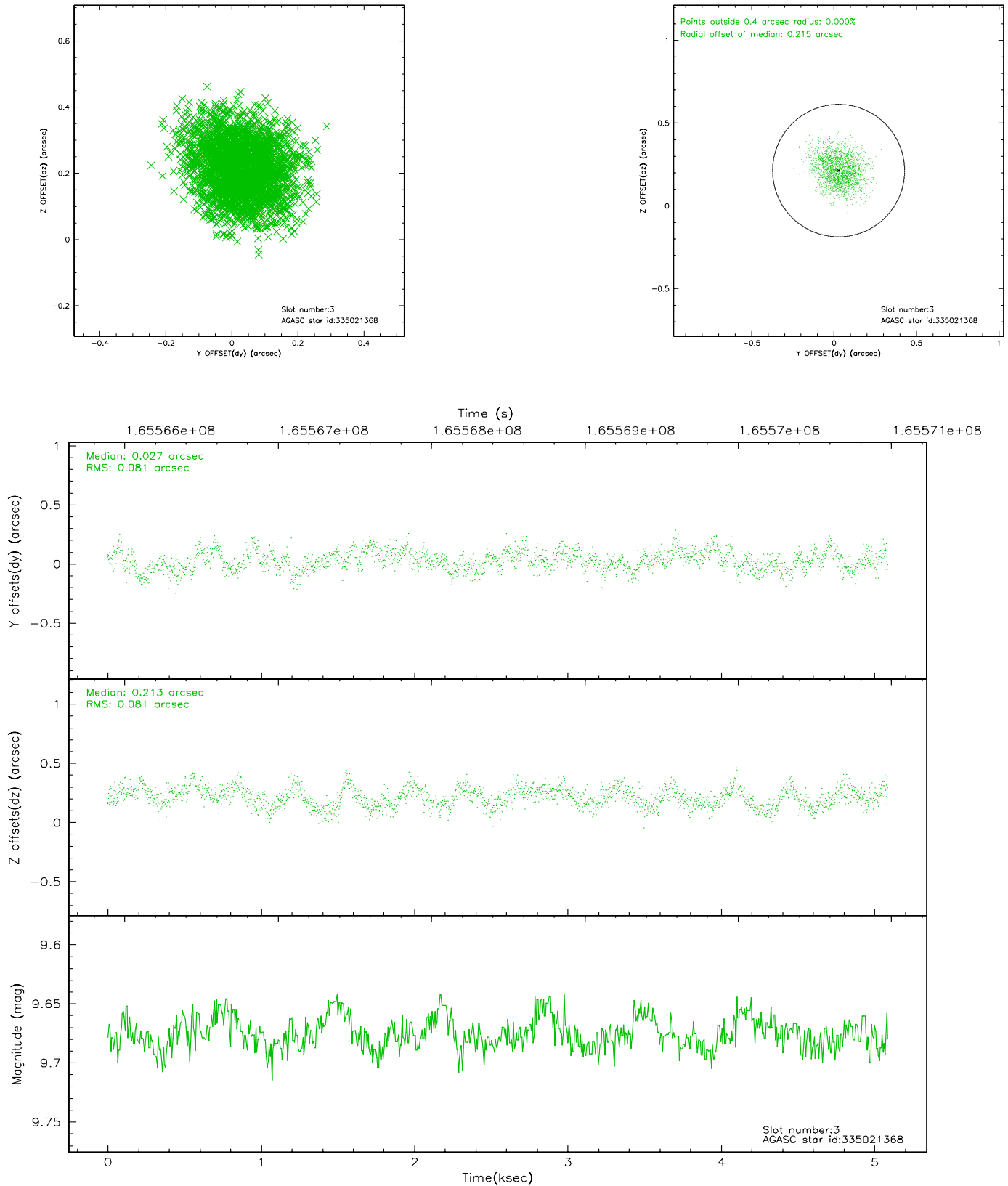


Slot Statistics

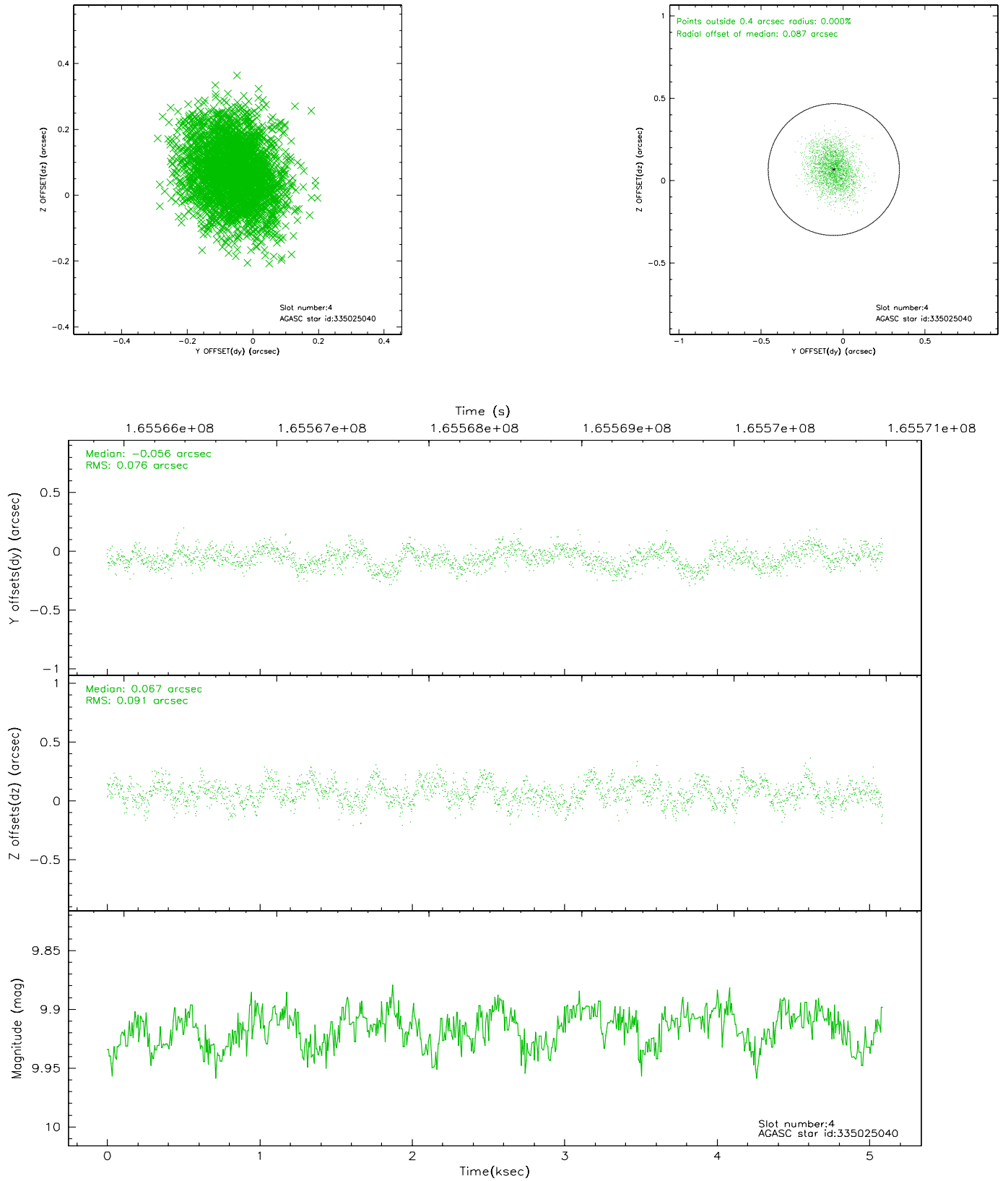
slot	status	id	mag	n_pts	med_dy	med_dz	dr1	dr2	ra	dec	mean_y	mean_z
0	FID	ACIS-I-1	7.25	1241	-0.049	-0.026	0.008	0.014	0.000000	0.000000	937.08	-830.03
1	FID	ACIS-I-4	7.19	1241	0.034	0.065	0.007	0.012	0.000000	0.000000	2157.89	1069.27
2	FID	ACIS-I-5	7.24	1241	-0.084	0.032	0.006	0.011	0.000000	0.000000	-1809.40	1068.47
3	GUIDE	335021368	9.68	2480	0.027	0.213	0.123	0.197	217.529643	33.934817	936.41	1378.03
4	GUIDE	335025040	9.92	2478	-0.056	0.067	0.128	0.204	218.601670	34.305240	-694.89	-1675.10
5	BAD	335025848	9.69	2357	0.132	-0.371	0.264	0.357	217.530531	33.778292	579.94	1813.47
6	GUIDE	335028696	9.20	2482	-0.008	0.101	0.137	0.213	217.260519	33.844112	1358.08	2137.50
7	GUIDE	335027640	9.14	2478	-0.080	-0.027	0.146	0.230	218.092211	33.193770	-2055.19	2385.39

2.4 Star Slots

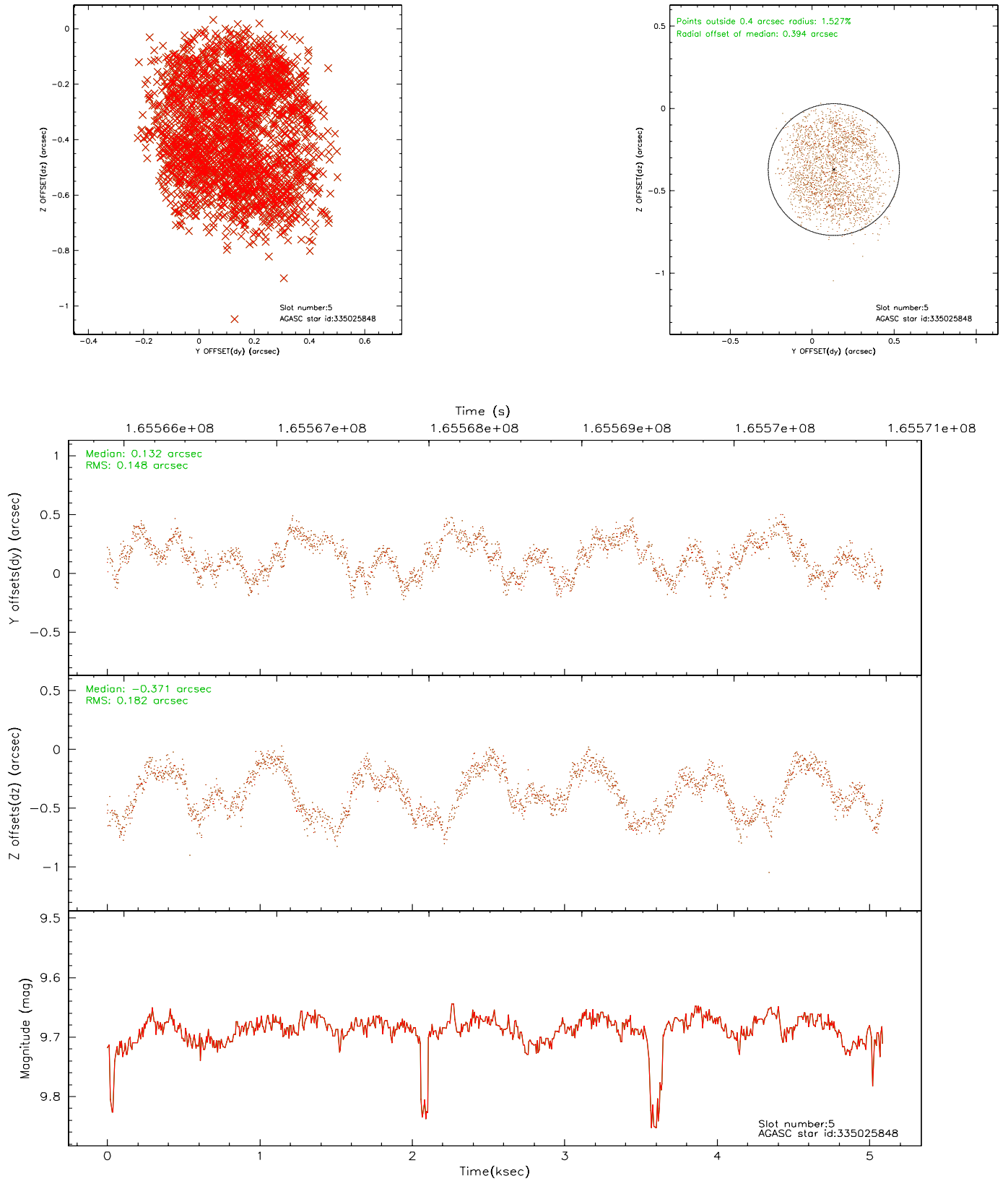
2.4.1 Slot 3



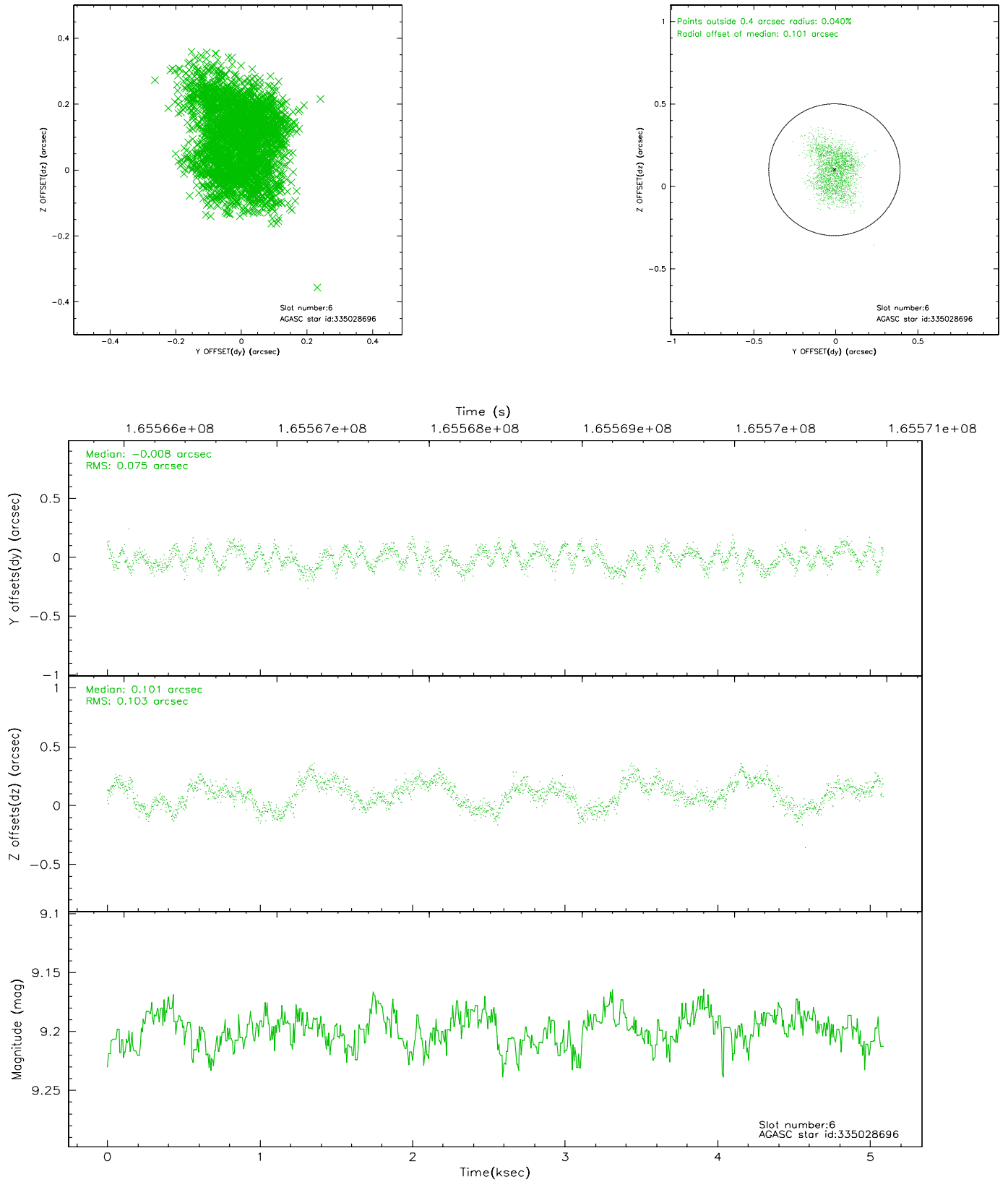
2.4.2 Slot 4



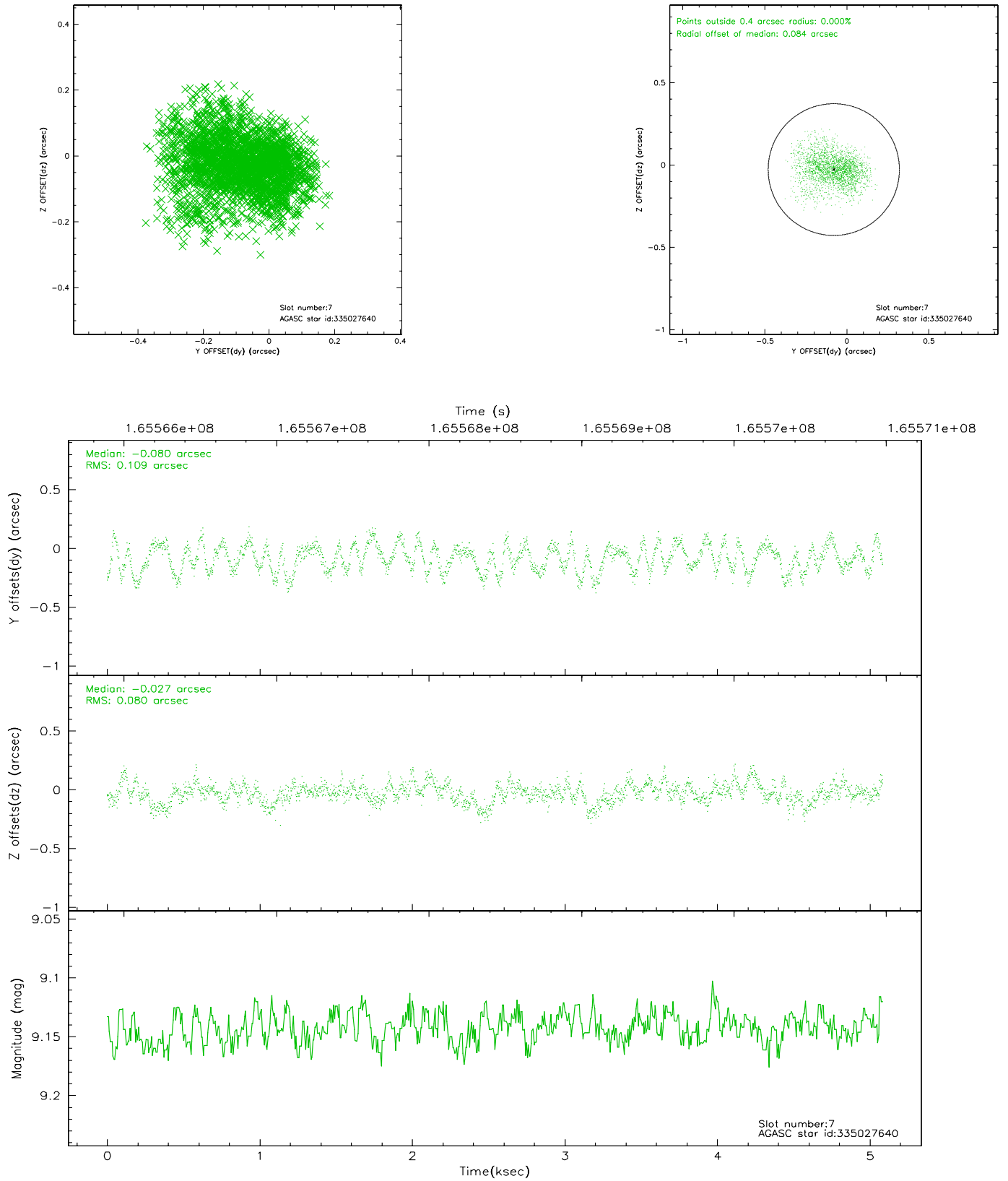
2.4.3 Slot 5



2.4.4 Slot 6

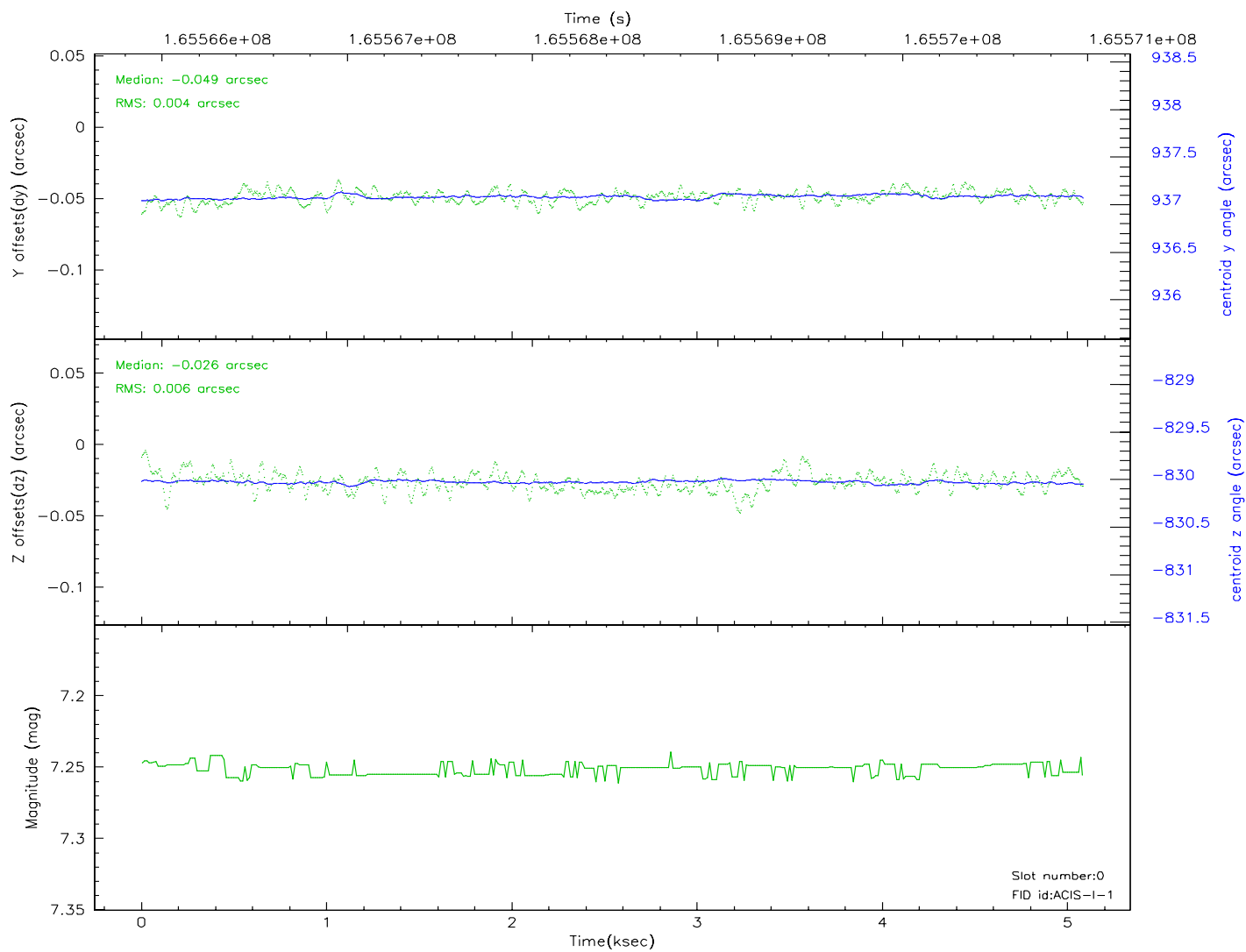
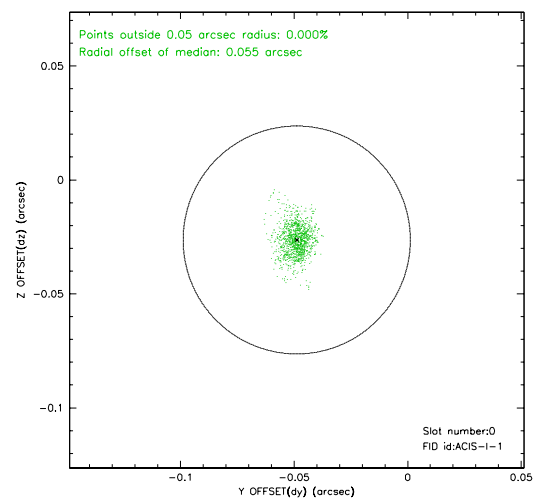
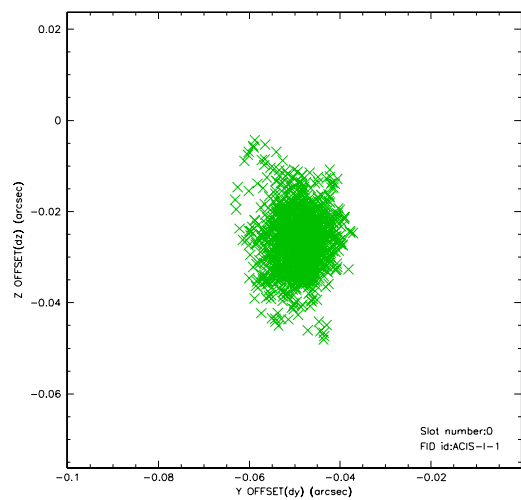


2.4.5 Slot 7

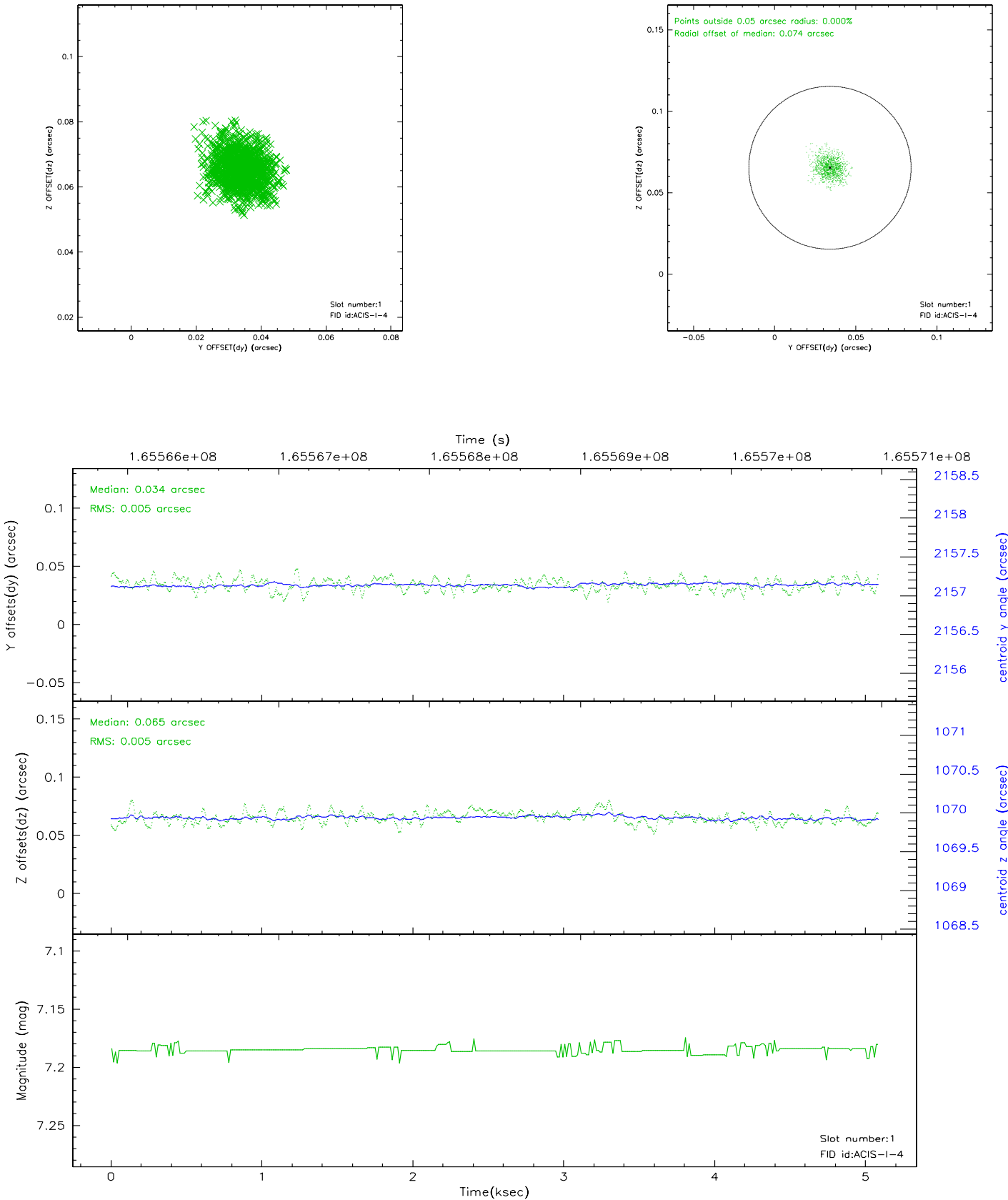


2.5 FID Slots

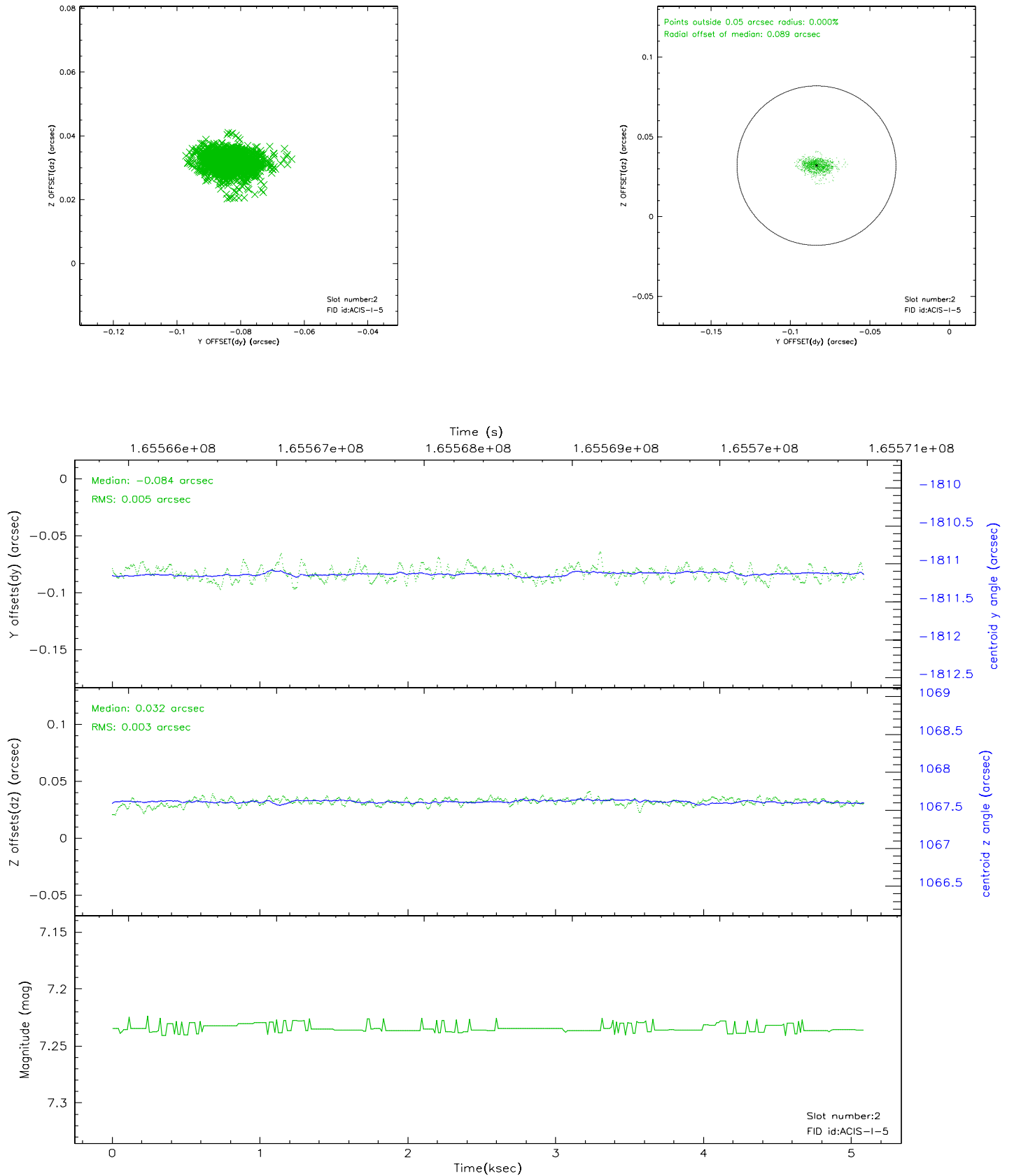
2.5.1 Slot 0



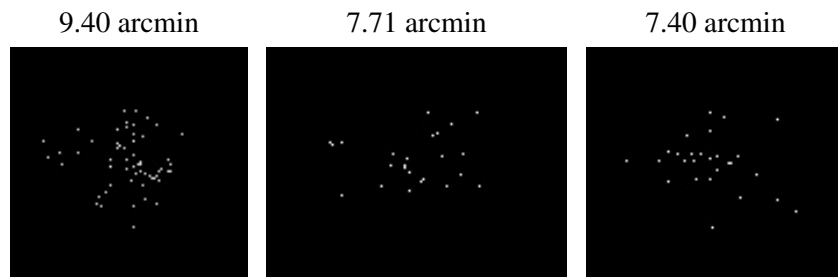
2.5.2 Slot 1



2.5.3 Slot 2



3 Point Sources



A Summary

A.1 Status

V&V Scientist	Jen Lauer
V&V Date (YYYY-MM-DD)	2006.07.30
V&V Edition	1
V&V Disposition and Status	OK
V&V Charge Time	4.674

A.2 Comments

Slot 5 is only tracked for 93% of the aspect interval, and is therefore marked bad and excluded from the aspect solution.