

V&V Reference Report

L2 ASCDS Version : 8.4.5

Observation 4051 - L2 Version 5
Chandra X-Ray Center

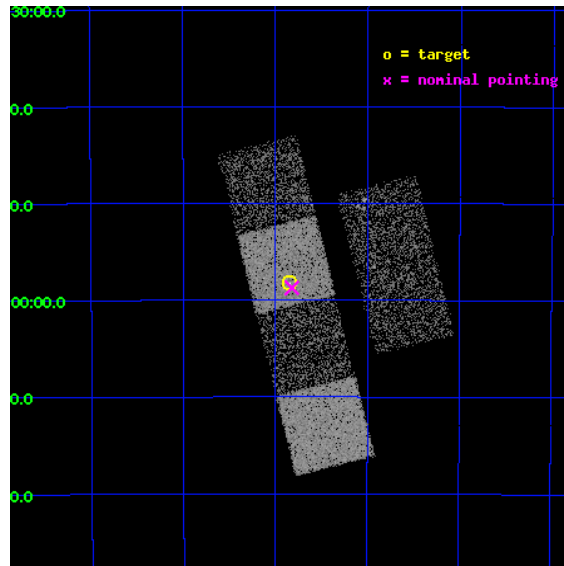
L2 Processing Date : Nov 30 2012

Contents

1	Front	2
2	OBI	3
2.1	OBI	3
2.1.1	Images	3
2.1.2	Bias	3
2.1.3	Parameters	4
2.1.4	Events	4
2.2	Compared Parameters	5
2.3	Aspect	6
2.4	Star Slots	9
2.4.1	Slot 3	9
2.4.2	Slot 5	10
2.4.3	Slot 6	11
2.4.4	Slot 7	12
2.5	FID Slots	13
2.5.1	Slot 0	13
2.5.2	Slot 1	14
2.5.3	Slot 2	15
A	Summary	16
A.1	Status	16
A.2	Comments	16

1 Front

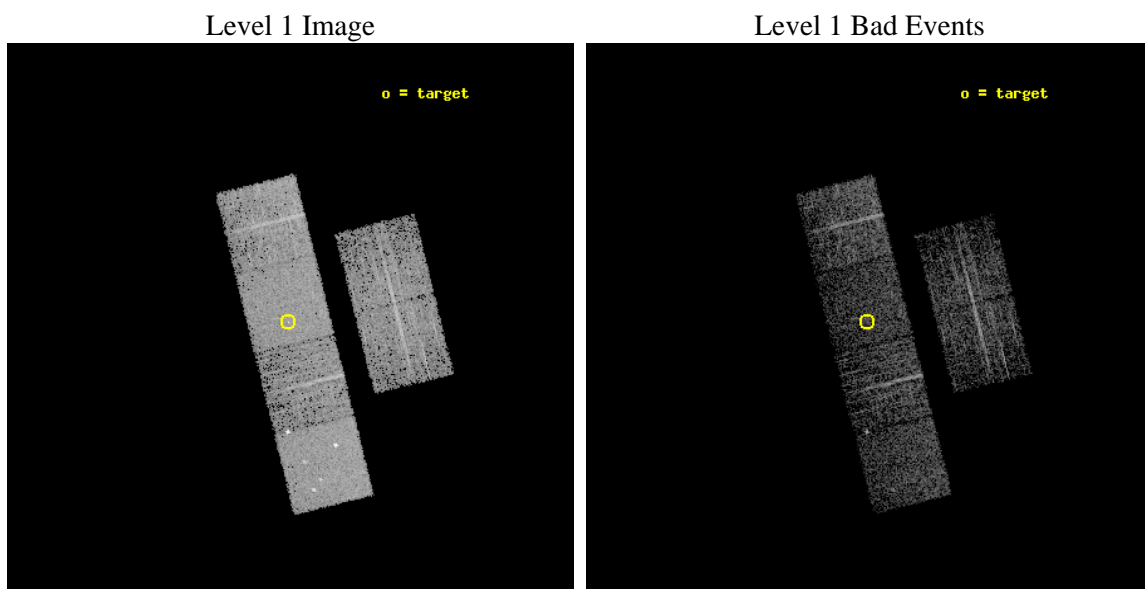
seq_num	700730	Sequence number
obs_id	4051	Observation id
title	WHY DO WE SEE BROAD LINES IN X-RAY ABSORBED AGN?	Proposal title
observer	Dr. Belinda Wilkes	Principal investigator
object	2MASS202551-495813	Source name
dtcycle	0	
cycle	P	events from which exps? Prim/Second/Both
ra_targ	306.46125	Observer's specified target RA [deg]
dec_targ	-49.970222	Observer's specified target Dec [deg]
ra_nom	306.45525933997	Nominal RA [deg]
dec_nom	-49.97882861528	Nominal Dec [deg]
roll_nom	256.06388716544	Nominal Roll [deg]
revision	5	Processing version of data
ontime	3055.9999886155	Sum of GTIs [s]
livetime	3017.3030766574	Livetime [s]
ontime2	3055.9999886155	Sum of GTIs [s]
ontime3	3055.9999886155	Sum of GTIs [s]
ontime5	3055.9999886155	Sum of GTIs [s]
ontime6	3055.9999886155	Sum of GTIs [s]
ontime7	3055.9999886155	Sum of GTIs [s]
ontime8	3052.7590183318	Sum of GTIs [s]
l2events	33336	Number of level 2 events



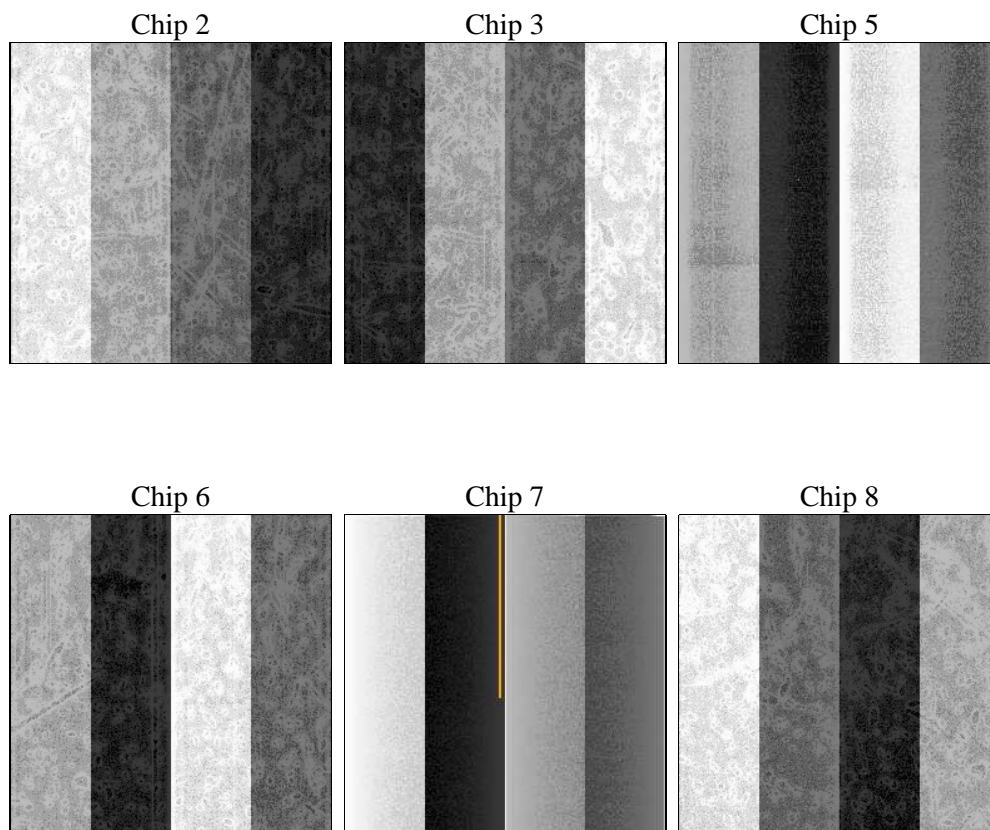
2 OBI

2.1 OBI

2.1.1 Images



2.1.2 Bias



2.1.3 Parameters

obi_num	0	Obi number	sched_exp_time	3300.000000	[s] Scheduled observation exposure time
ascdsver	8.4.5	Processing system revision	ontime	3055.9999886155	Sum of GTIs [s]
caldsver	4.5.2	 	ontime2	3055.9999886155	Sum of GTIs [s]
date	2012-11-30T20:23:41	Date and time of file creation	ontime3	3055.9999886155	Sum of GTIs [s]
revision	5	Processing version of data	ontime5	3055.9999886155	Sum of GTIs [s]
			ontime6	3055.9999886155	Sum of GTIs [s]
			ontime7	3055.9999886155	Sum of GTIs [s]
			ontime8	3052.7590183318	Sum of GTIs [s]
			l1events	142689	Number of level 1 events

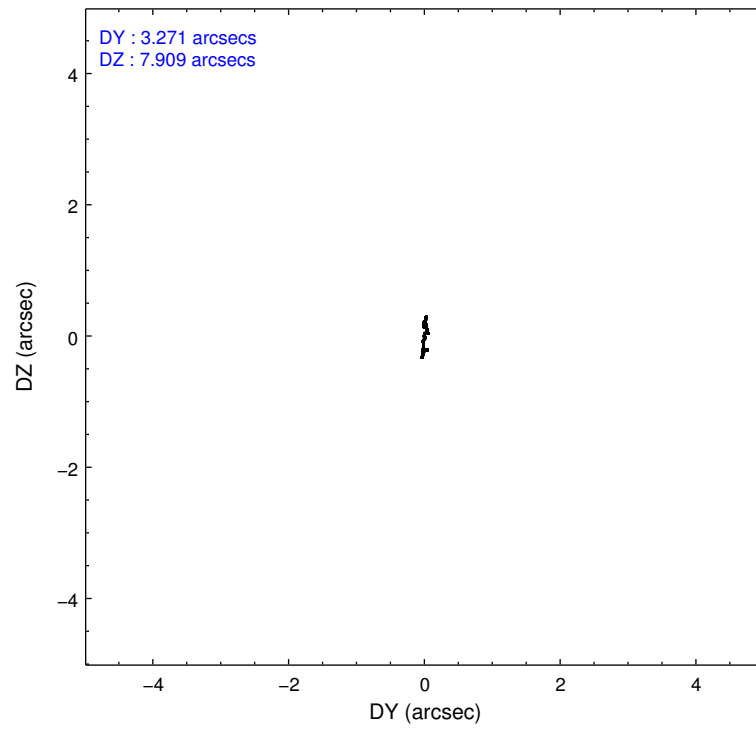
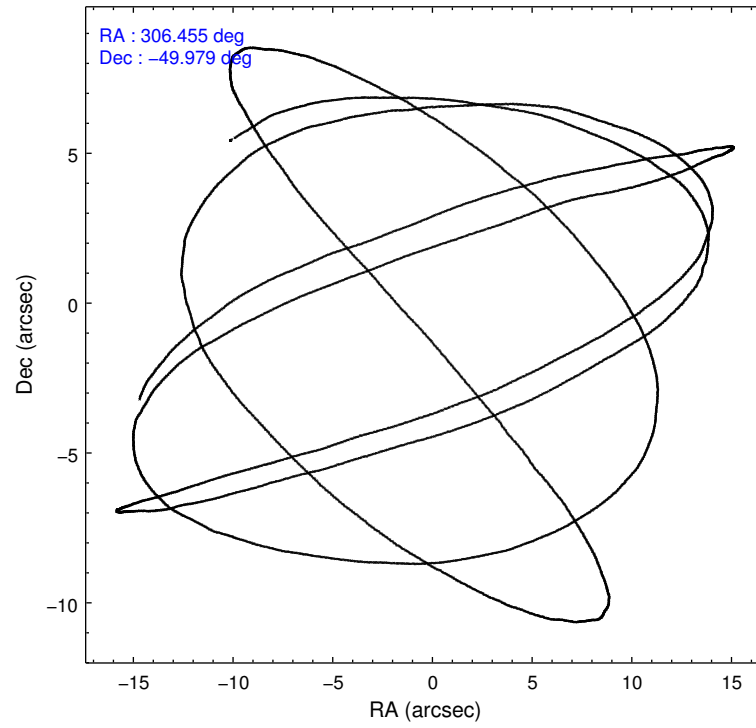
2.1.4 Events

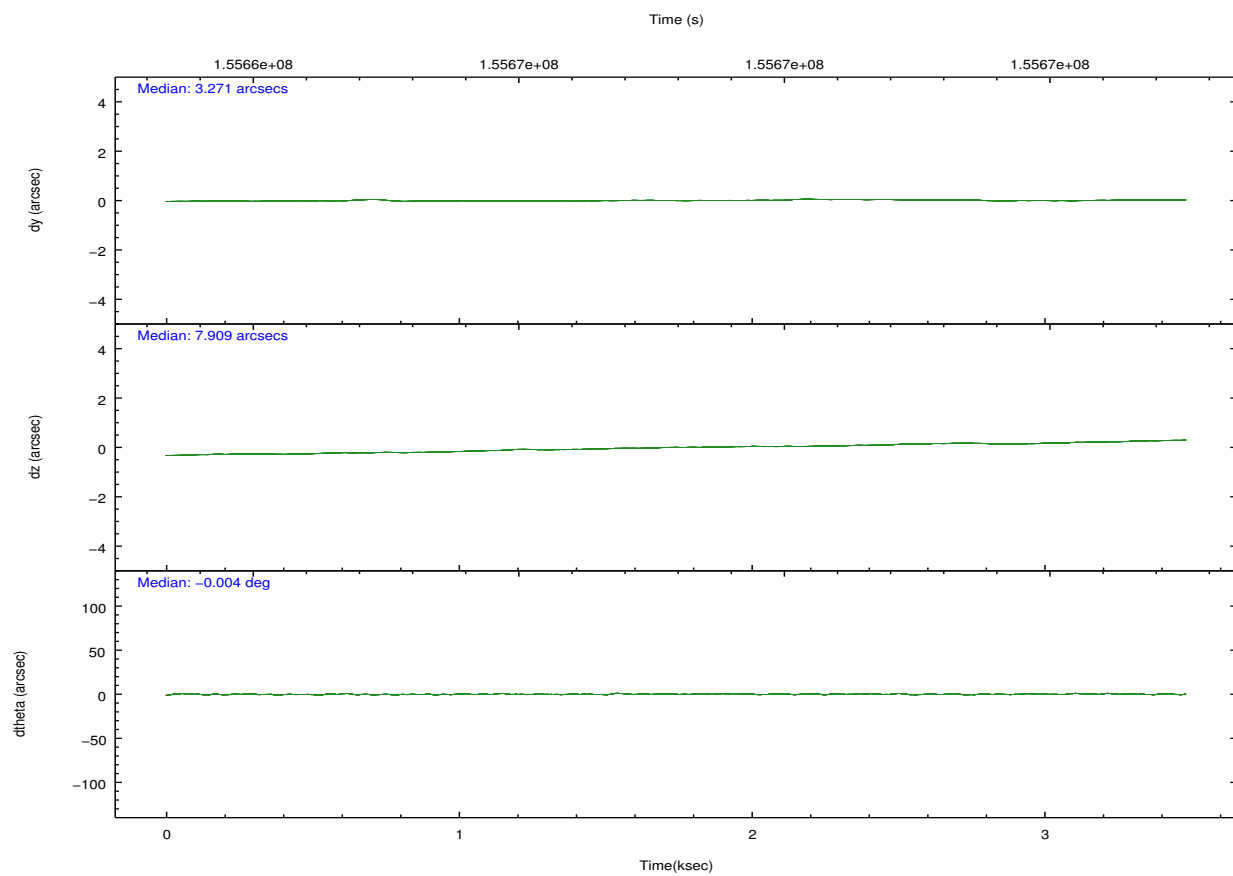
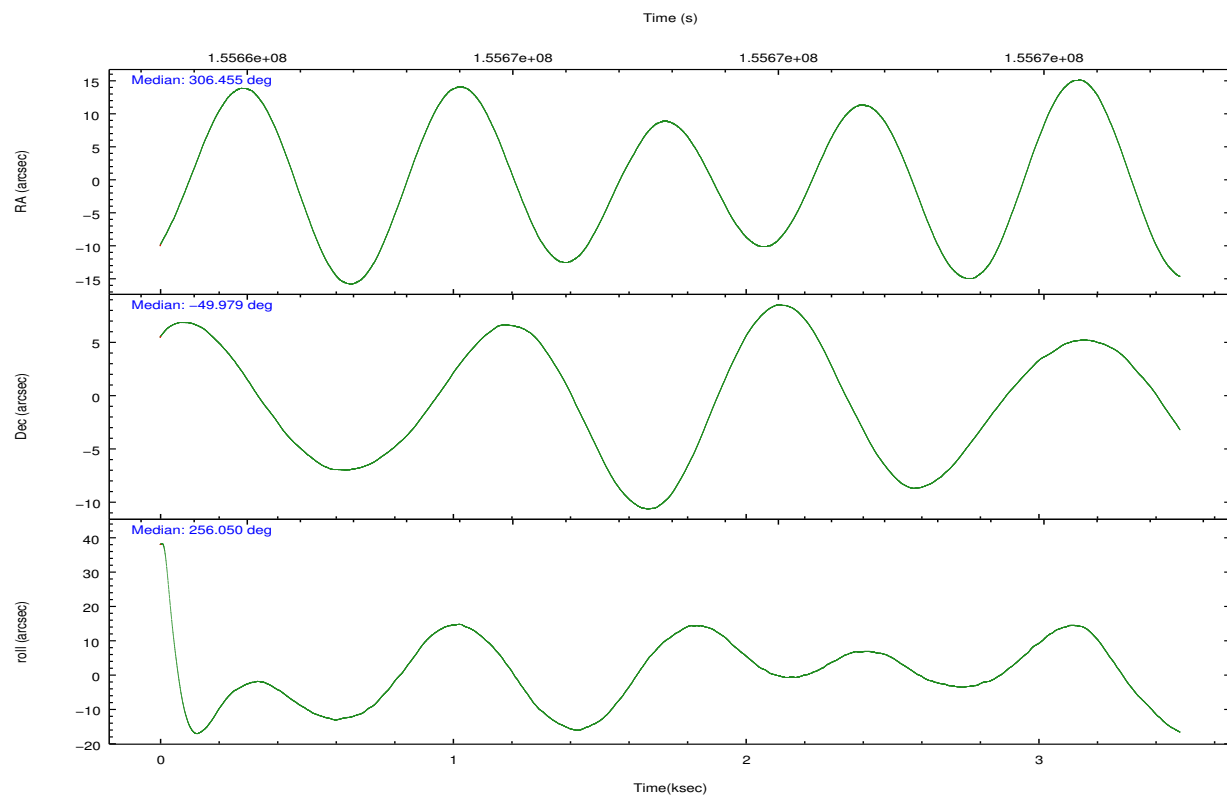
	ccd 2	ccd 3	ccd 5	ccd 6	ccd 7	ccd 8		ccd 2	ccd 3	ccd 5	ccd 6	ccd 7	ccd 8
level 1 events	19444	18216	31575	19725	26690	27039	grade 0 events	1042	1030	2734	1026	1291	1557
rejected events	17175	16009	15637	17345	14636	22203		5%	5%	8%	5%	4%	5%
rejected %	88%	87%	49%	87%	54%	82%	grade 1 events	9	12	86	5	35	25
								0%	0%	0%	0%	0%	0%
							grade 2 events	427	377	4495	461	2420	1083
								2%	2%	14%	2%	9%	4%
							grade 3 events	234	215	633	229	1115	491
								1%	1%	2%	1%	4%	1%
							grade 4 events	208	218	593	239	1029	459
								1%	1%	1%	1%	3%	1%
							grade 5 events	735	824	2203	863	2411	1070
								3%	4%	6%	4%	9%	3%
							grade 6 events	360	371	7507	425	6219	1248
								1%	2%	23%	2%	23%	4%
							grade 7 events	16429	15169	13324	16477	12170	21106
								84%	83%	42%	83%	45%	78%

2.2 Compared Parameters

Parameter	Planned	Actual	Parameter	Planned	Actual
Instrument	ACIS	ACIS	Obspar format version number	7	7
Detector	ACIS-235678	ACIS-235678	Obspar file type	PREDICTED	ACTUAL
Grating	NONE	NONE	Obspar update status	NONE	UPDATED
Data mode	FAINT	FAINT	Number of optional ACIS chips dropped	0	0
Observation mode	POINTING	POINTING	On-chip summing requested	N	N
[deg] Pointing RA	306.442867	306.455259339975	Subarray requested	NONE	NONE
[deg] Pointing Dec	-49.952997	-49.97888286152774	Alternating exposures requested	N	N
[deg] Pointing Roll	255.897499	256.0638871654384	[s] Primary exposure time	0.000000	3.2
[mm] SIM focus pos	-0.684267	-0.6828225247311905			
[mm] SIM defocus	0	0.001444936568705701			
[mm] SIM translation stage pos	-190.132523	-190.1400660498719			
[mm] SIM translation stage offset	0	0.00754346686406393			
[s] Observation start time (MET)	155665030.184000	155664466.37954			
Observation start date	2002-12-07T16:16:06	2002-12-07T16:07:46			
[s] Observation end time (MET)	155668330.184000	155669155.24223			
Observation end date	2002-12-07T17:11:06	2002-12-07T17:25:55			
Read mode	TIMED	TIMED			

2.3 Aspect



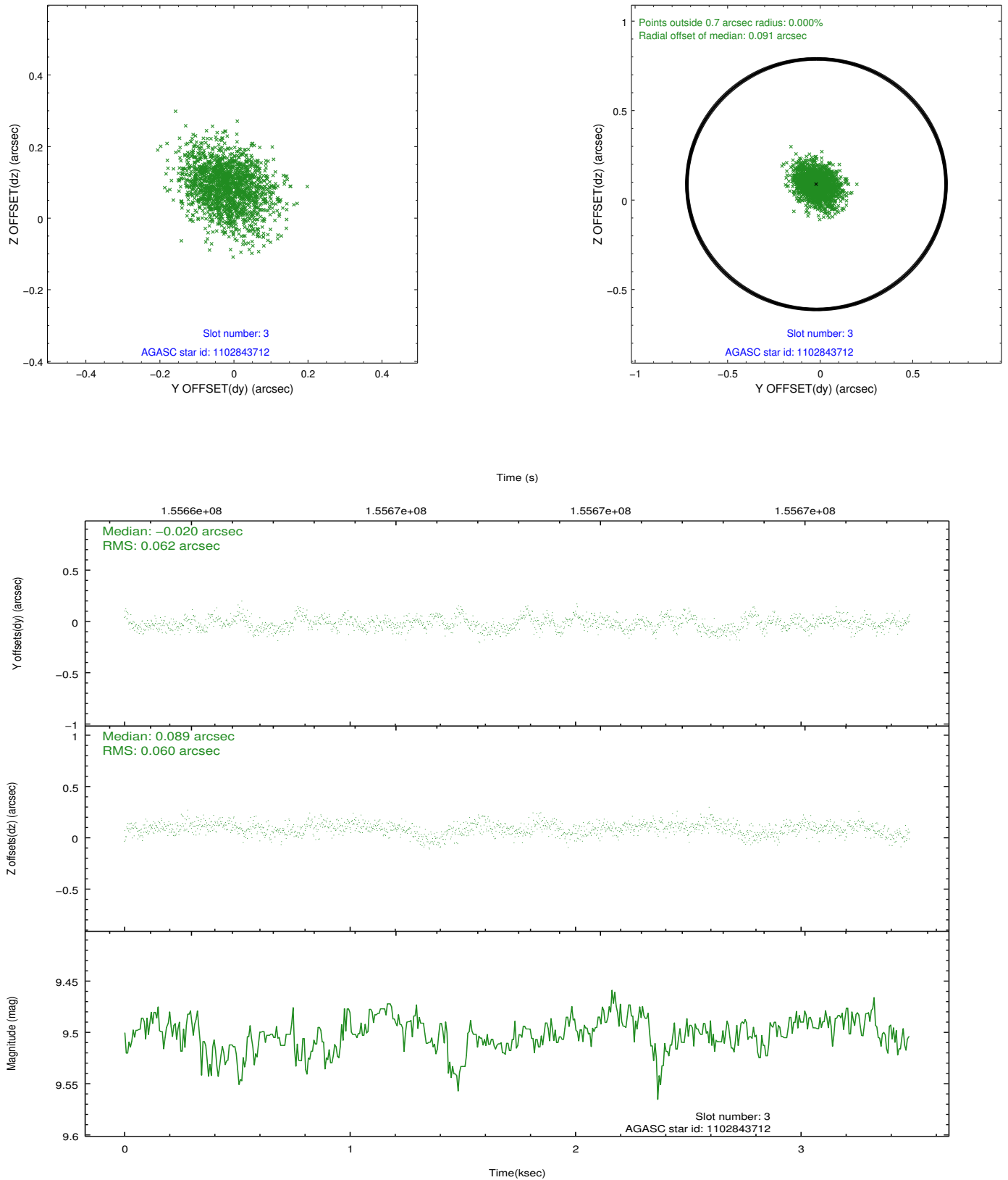


Slot Statistics

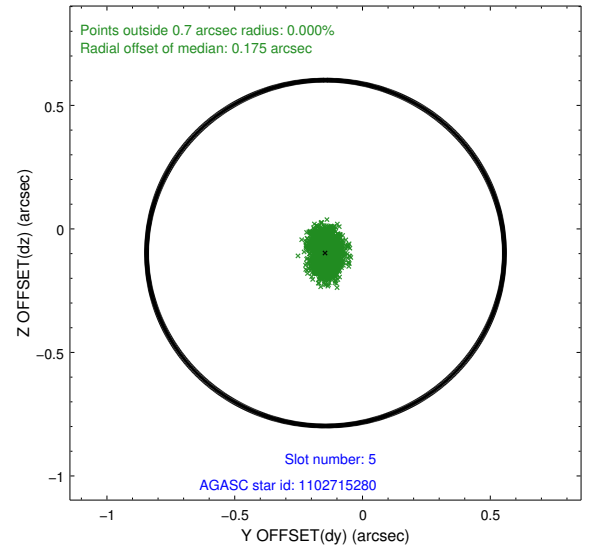
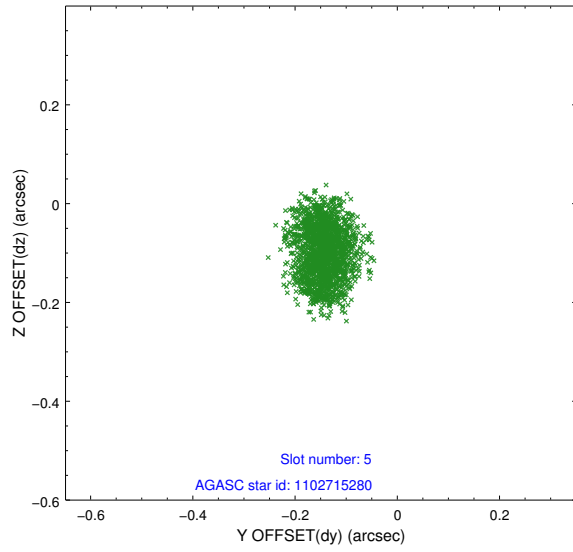
slot	status	id	mag	n_pts	med_dy	med_dz	dr1	dr2	ra	dec	mean_y	mean_z
0	FID	ACIS-S-2	7.11	850	-0.011	-0.012	0.007	0.011	0.000000	0.000000	-755.95	-1729.08
1	FID	ACIS-S-4	7.20	850	0.011	0.009	0.006	0.010	0.000000	0.000000	2156.54	177.53
2	FID	ACIS-S-5	7.24	850	-0.031	0.013	0.007	0.011	0.000000	0.000000	-1806.46	173.30
3	GUIDE	1102843712	9.50	1699	-0.020	0.089	0.091	0.151	307.033930	-49.840958	-720.33	1233.61
4	OMITTED		0.00	0	0.000	0.000	0.000	0.000	0.000000	0.000000	0.00	0.00
5	GUIDE	1102715280	7.81	1700	-0.145	-0.098	0.067	0.100	305.571166	-49.447659	-1255.43	-2419.07
6	GUIDE	1102723544	9.78	1698	0.187	-0.029	0.115	0.187	305.922325	-49.780883	-301.98	-1325.27
7	GUIDE	1102845160	8.83	1698	-0.026	0.041	0.097	0.144	307.361187	-49.782952	-1101.49	1923.07

2.4 Star Slots

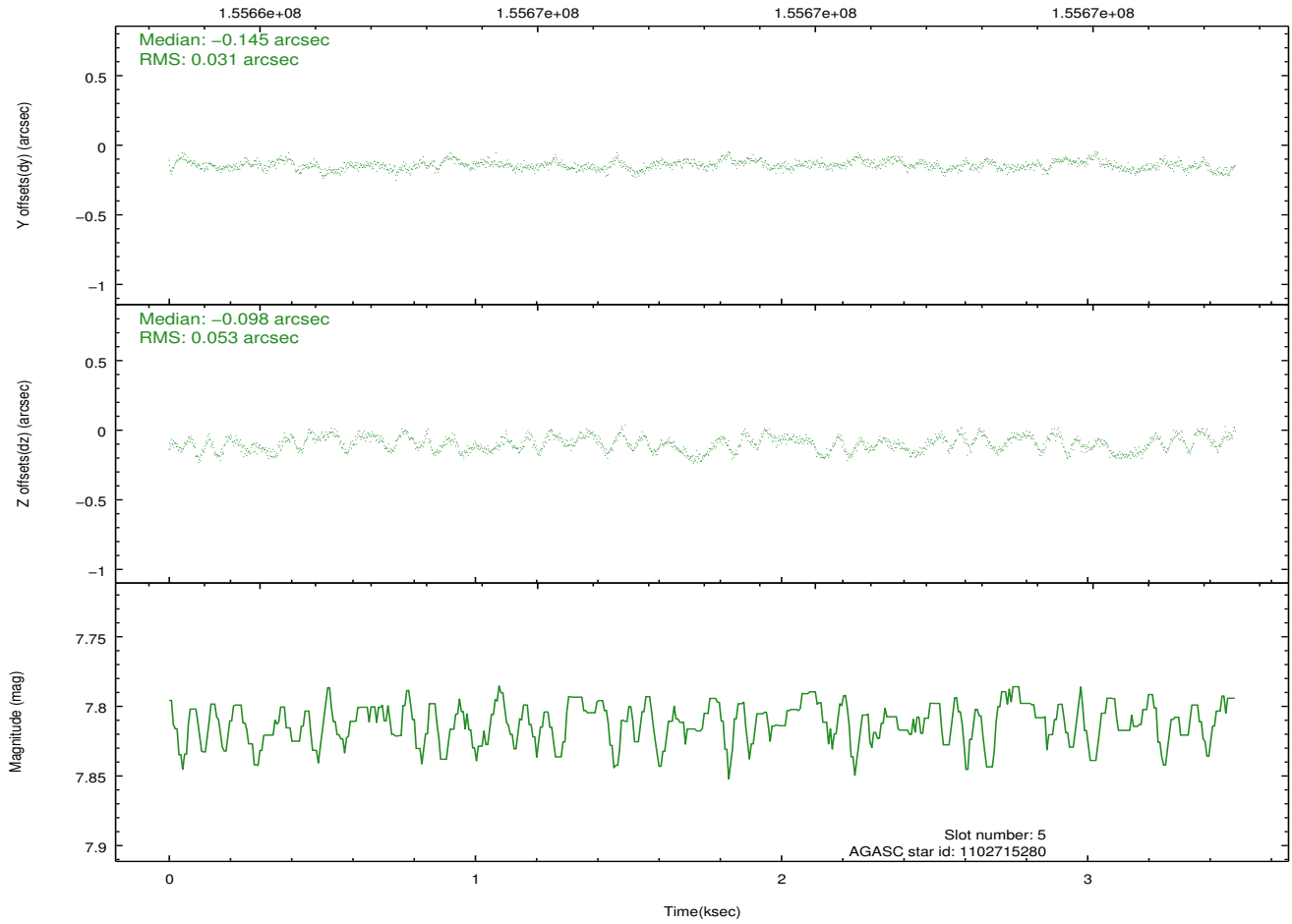
2.4.1 Slot 3



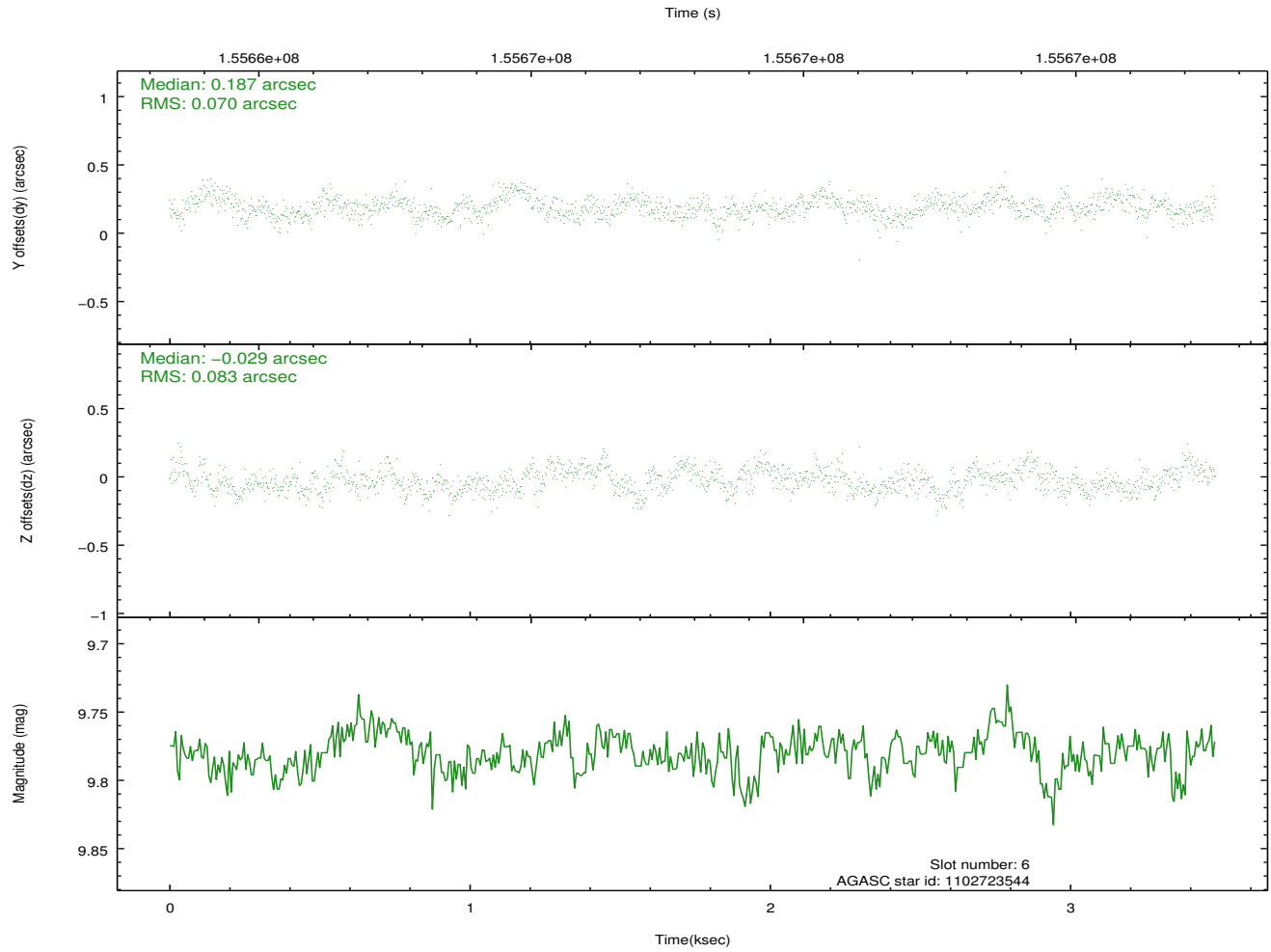
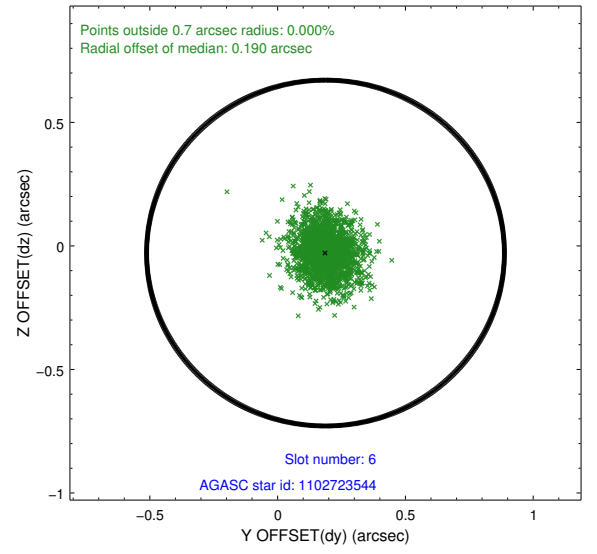
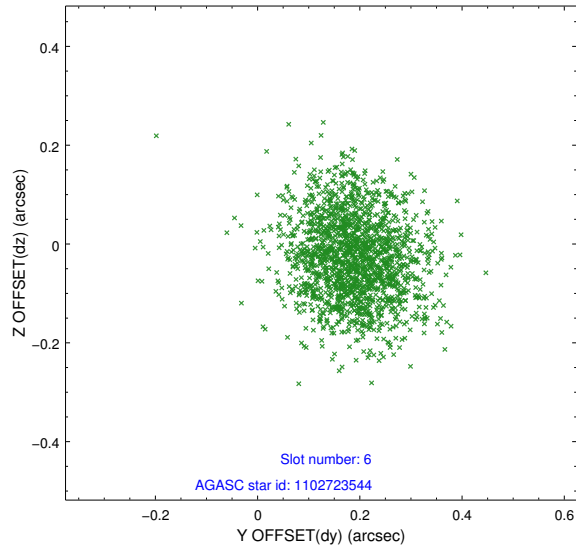
2.4.2 Slot 5



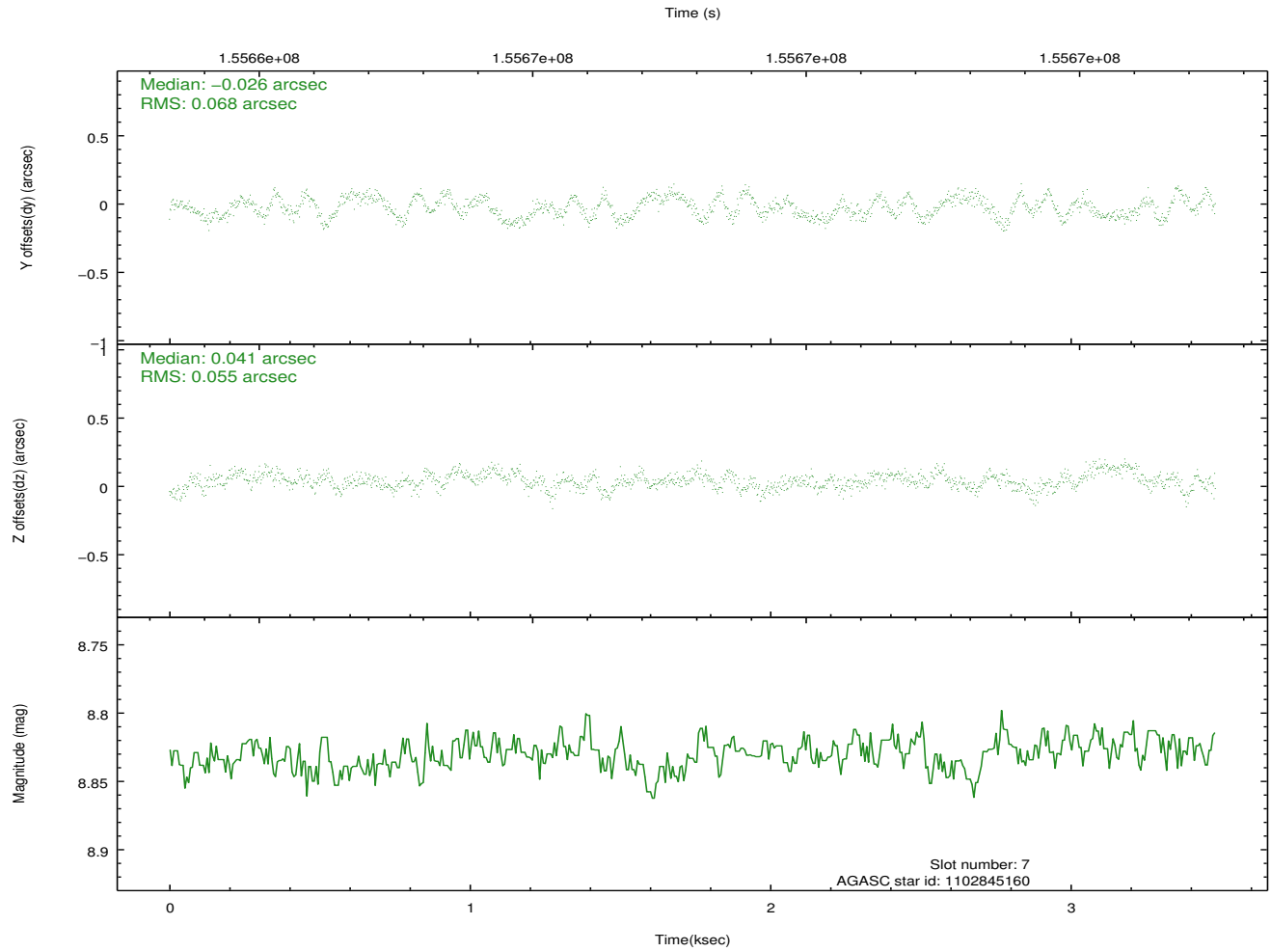
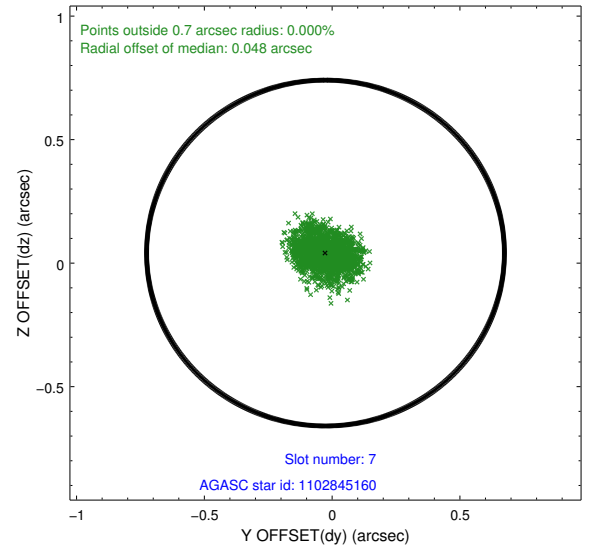
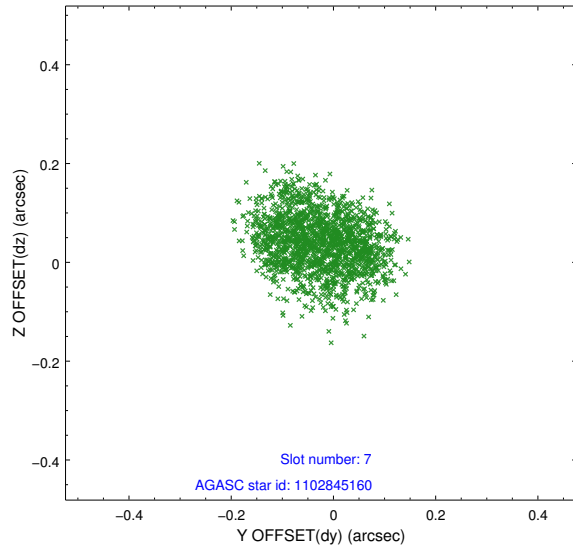
Time (s)



2.4.3 Slot 6

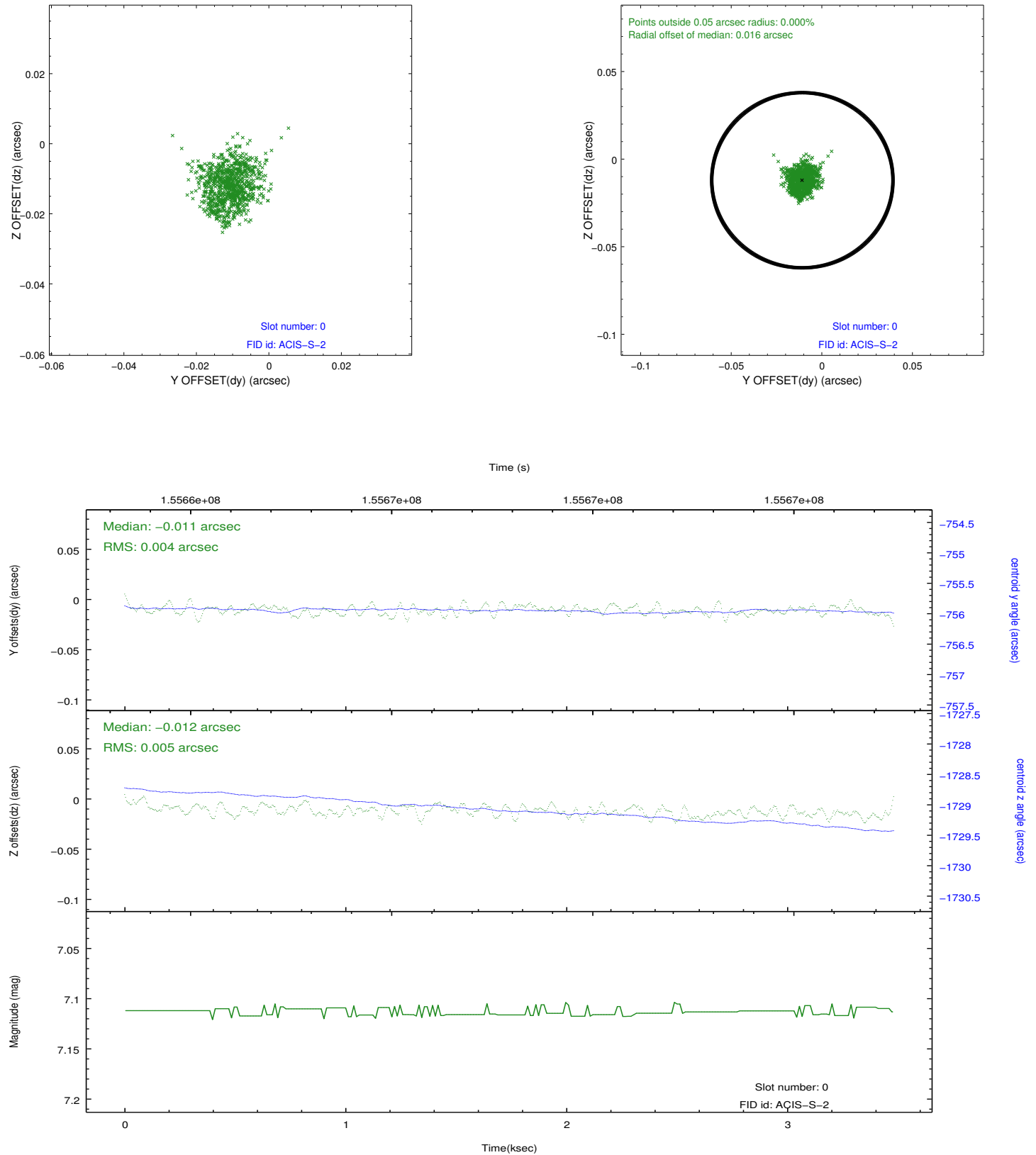


2.4.4 Slot 7

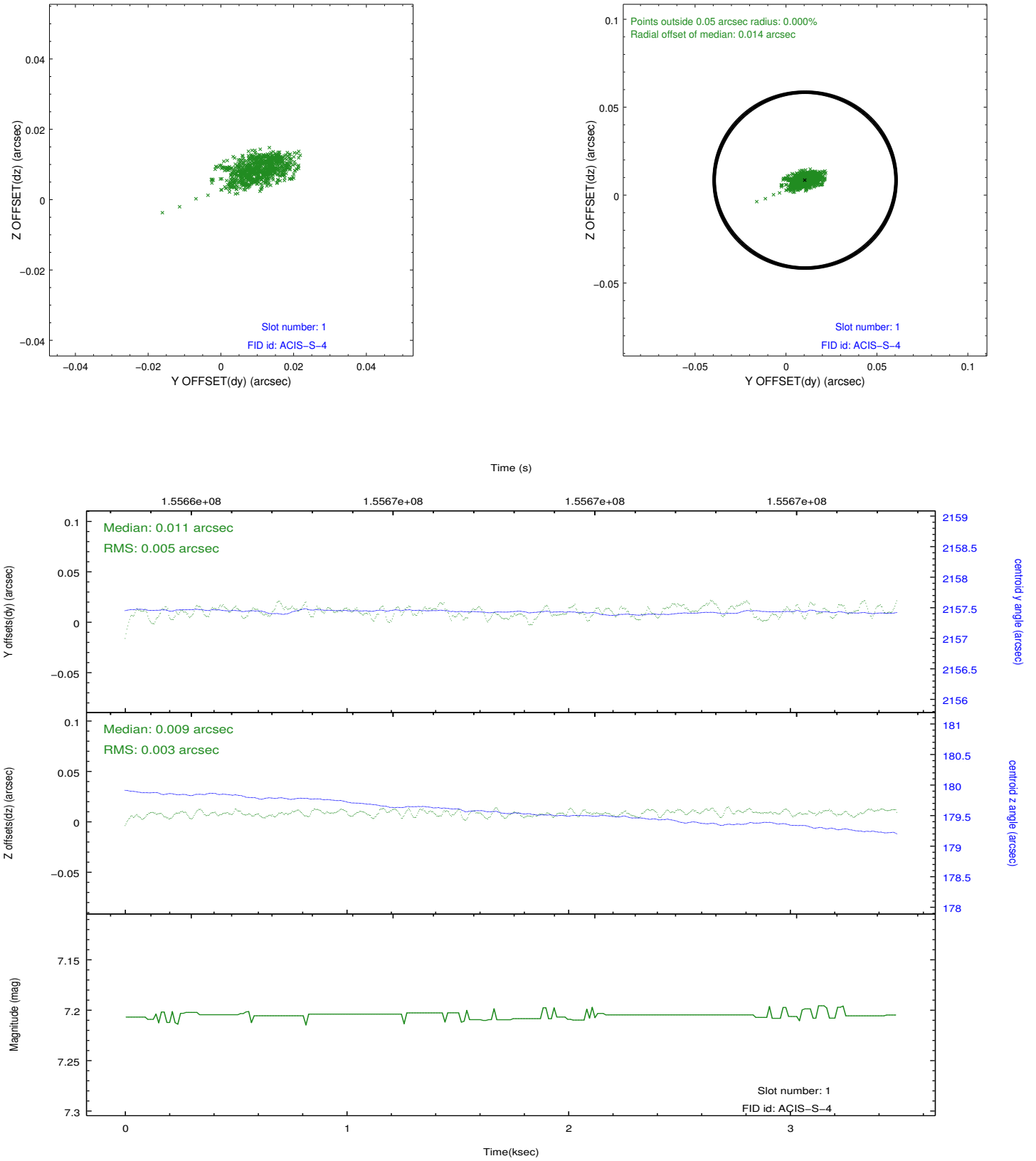


2.5 FID Slots

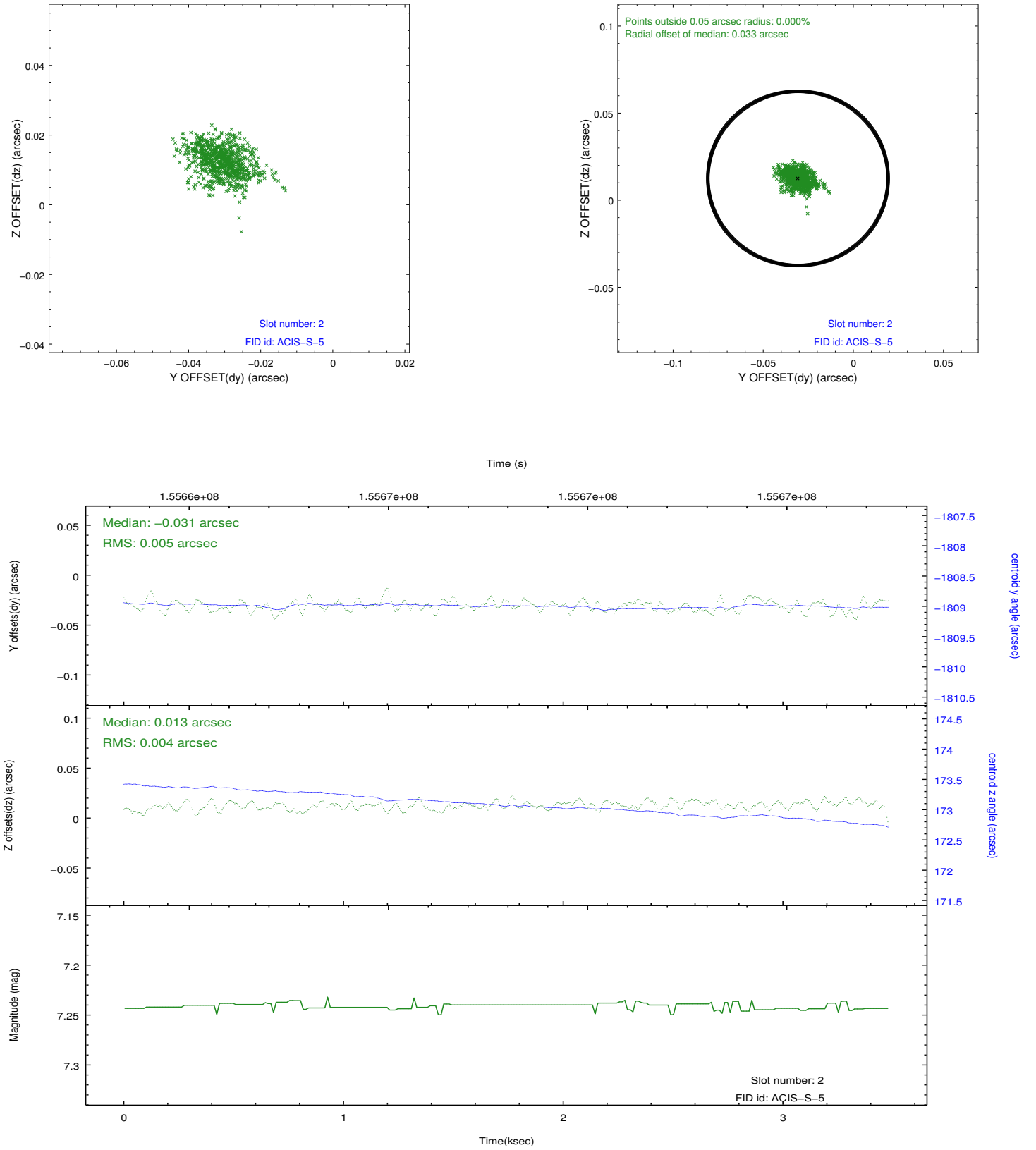
2.5.1 Slot 0



2.5.2 Slot 1



2.5.3 Slot 2



A Summary

A.1 Status

V&V Scientist	Beth Sundheim
V&V Date (YYYY-MM-DD)	2012.12.10
V&V Edition	1
V&V Disposition and Status	OK
V&V Charge Time	3.059

A.2 Comments

The guide star in slot 4 was removed from the aspect solution due to poor data quality. The aspect solution is improved by the removal of this star from the solution.