

V&V Reference Report

L2 ASCDS Version : 7.6.8.1

Observation 3921 - L2 Version 001
Chandra X-Ray Center

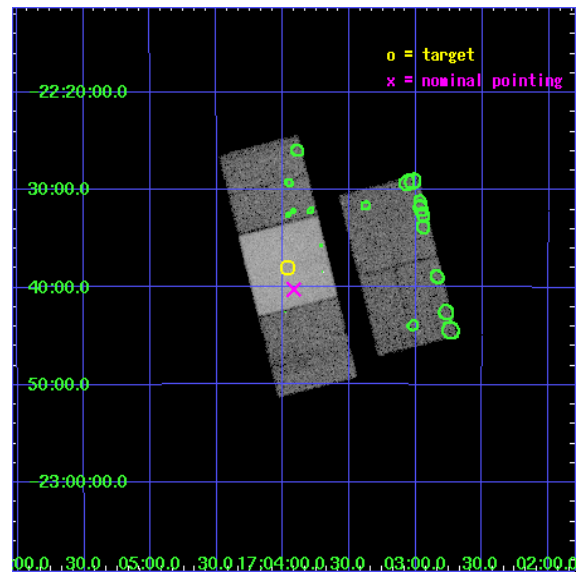
L2 Processing Date : Aug 6 2006

Contents

1	Front	2
2	OBI	3
2.1	OBI	3
2.1.1	Images	3
2.1.2	Bias	3
2.1.3	Parameters	4
2.1.4	Events	4
2.2	Compared Parameters	5
2.3	Aspect	6
2.4	Star Slots	9
2.4.1	Slot 3	9
2.4.2	Slot 4	10
2.4.3	Slot 5	11
2.4.4	Slot 6	12
2.4.5	Slot 7	13
2.5	FID Slots	14
2.5.1	Slot 0	14
2.5.2	Slot 1	15
2.5.3	Slot 2	16
3	Point Sources	17
A	Summary	18
A.1	Status	18
A.2	Comments	18

1 Front

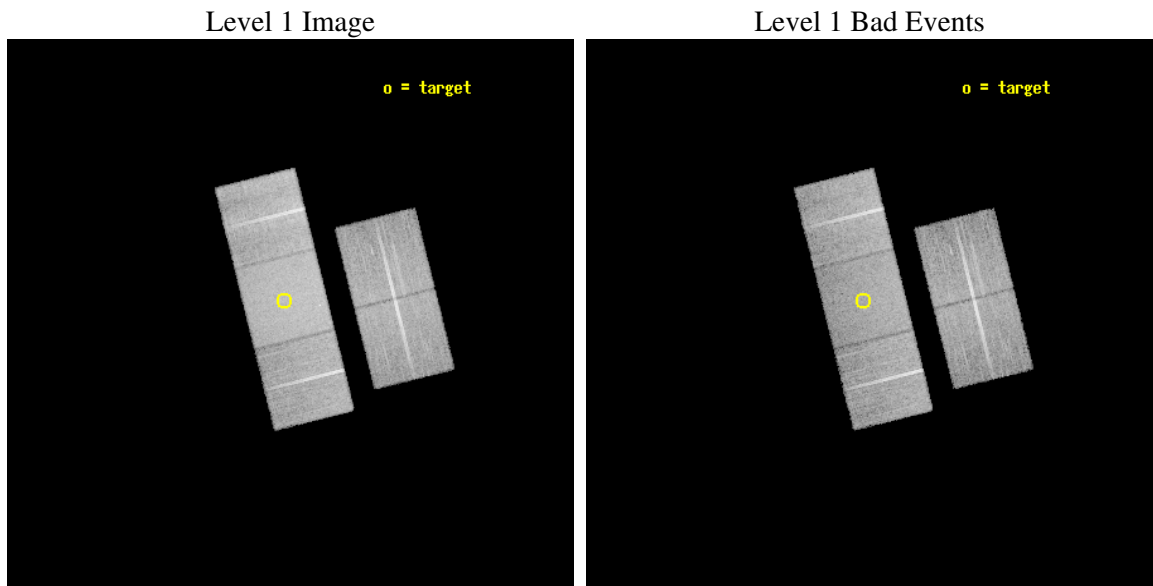
seq_num	500400
obs_id	3921
title	LOCALIZATION OF OPTICALLY-DARK GRBS WITH FAST TOO OBSERVATIONS
observer	Professor Gordon Garmire
object	GRB030528
dtcycle	0
cycle	P
ra_targ	255.9917
dec_targ	-22.63333
ra_nom	255.97959424871
dec_nom	-22.670713688812
roll_nom	255.96415502383
revision	3
ontime	20339.099960893
livetime	20073.354646477
ontime2	20326.536030114
ontime3	20332.817990482
ontime6	20339.099960893
ontime7	20339.099960893
ontime8	20339.099960893
l2events	137218



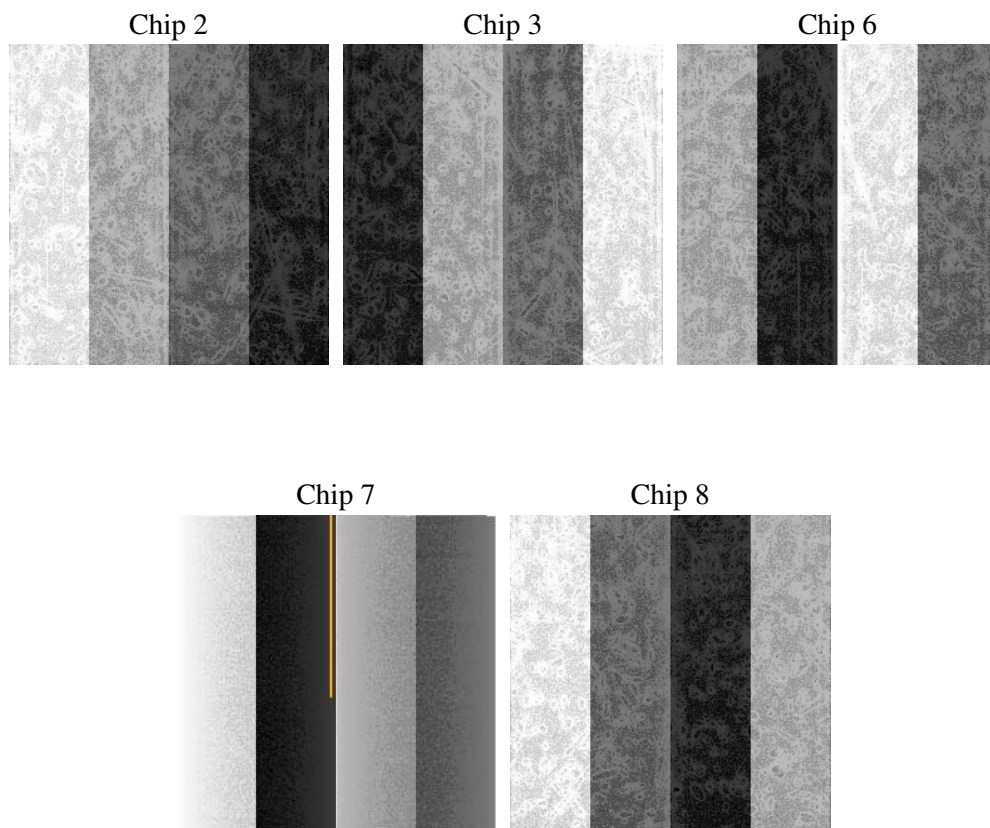
2 OBI

2.1 OBI

2.1.1 Images



2.1.2 Bias



2.1.3 Parameters

obi_num	0
ascdsver	7.6.8.1
caldbver	3.2.2
date	2006-08-06T22:28:55
revision	3

sched_exp_time	20200.000000
ontime	20344.286484063
ontime2	20334.863573372
ontime3	20341.145533741
ontime6	20347.427484244
ontime7	20344.286484063
ontime8	20347.427504152
l1events	718564

2.1.4 Events

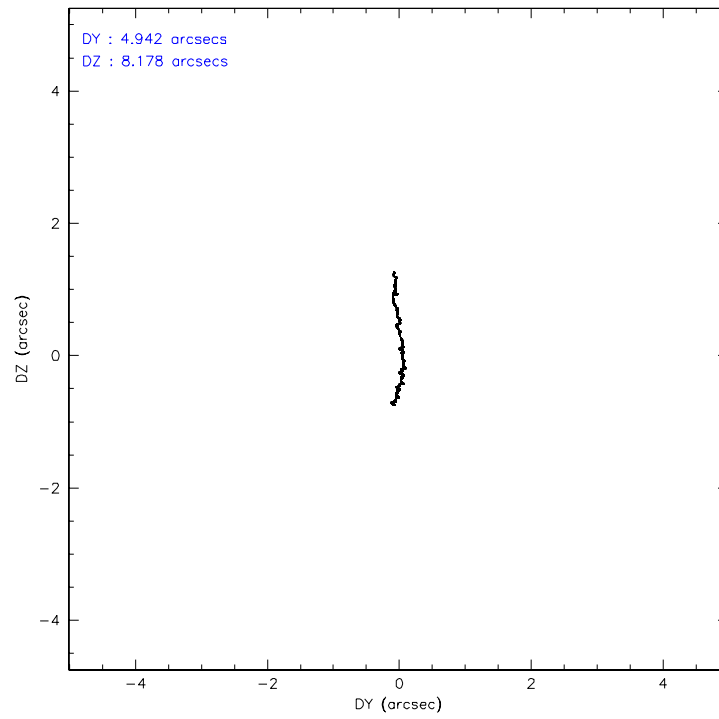
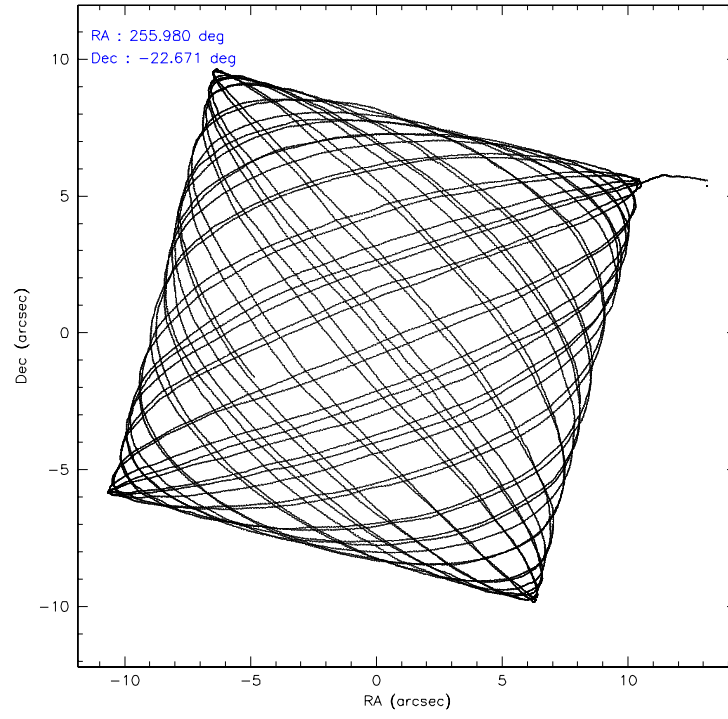
	ccd 2	ccd 3	ccd 6	ccd 7	ccd 8
level 1 events	122210	126085	131082	178261	160926
rejected events	104916	108971	112803	104103	124733
rejected %	85%	86%	86%	58%	77%

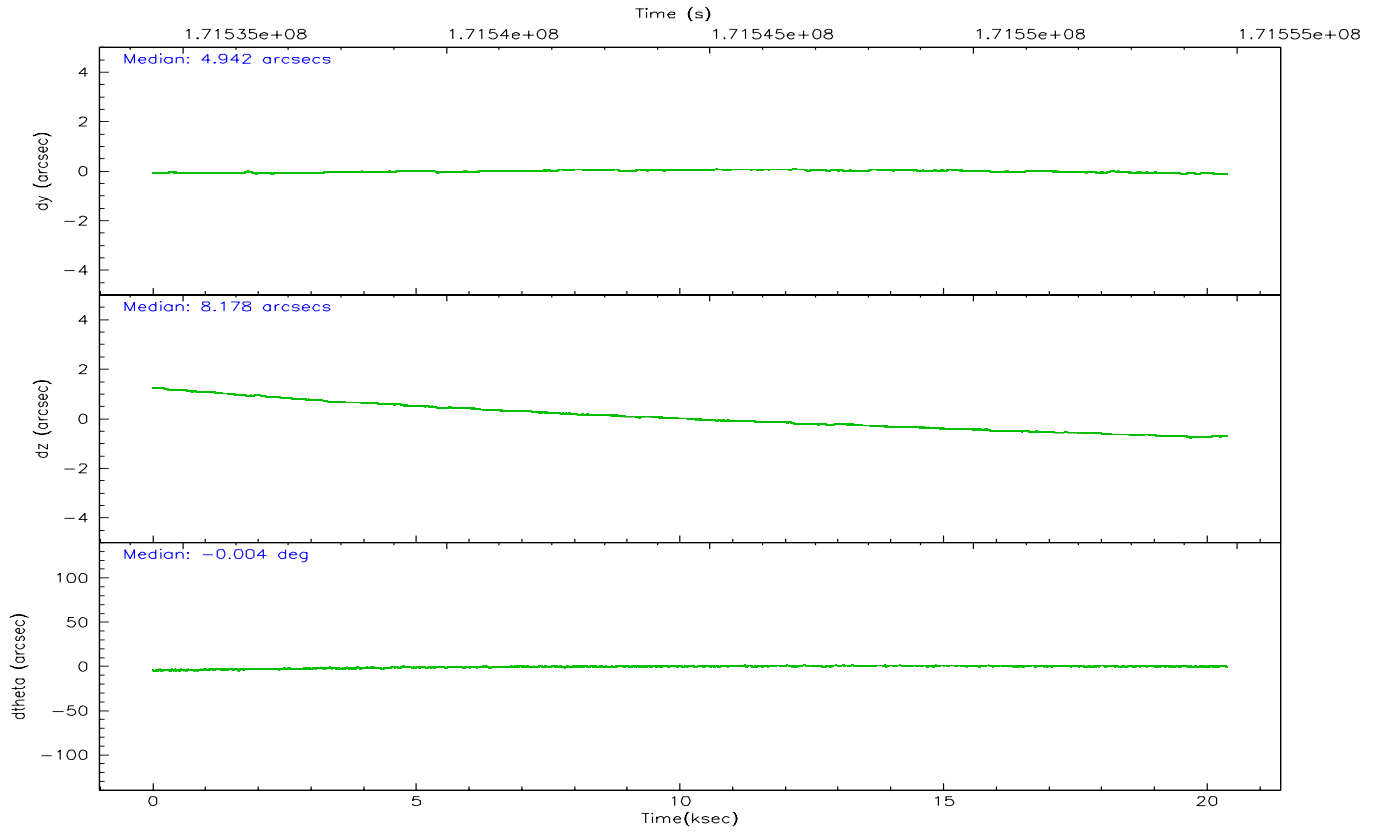
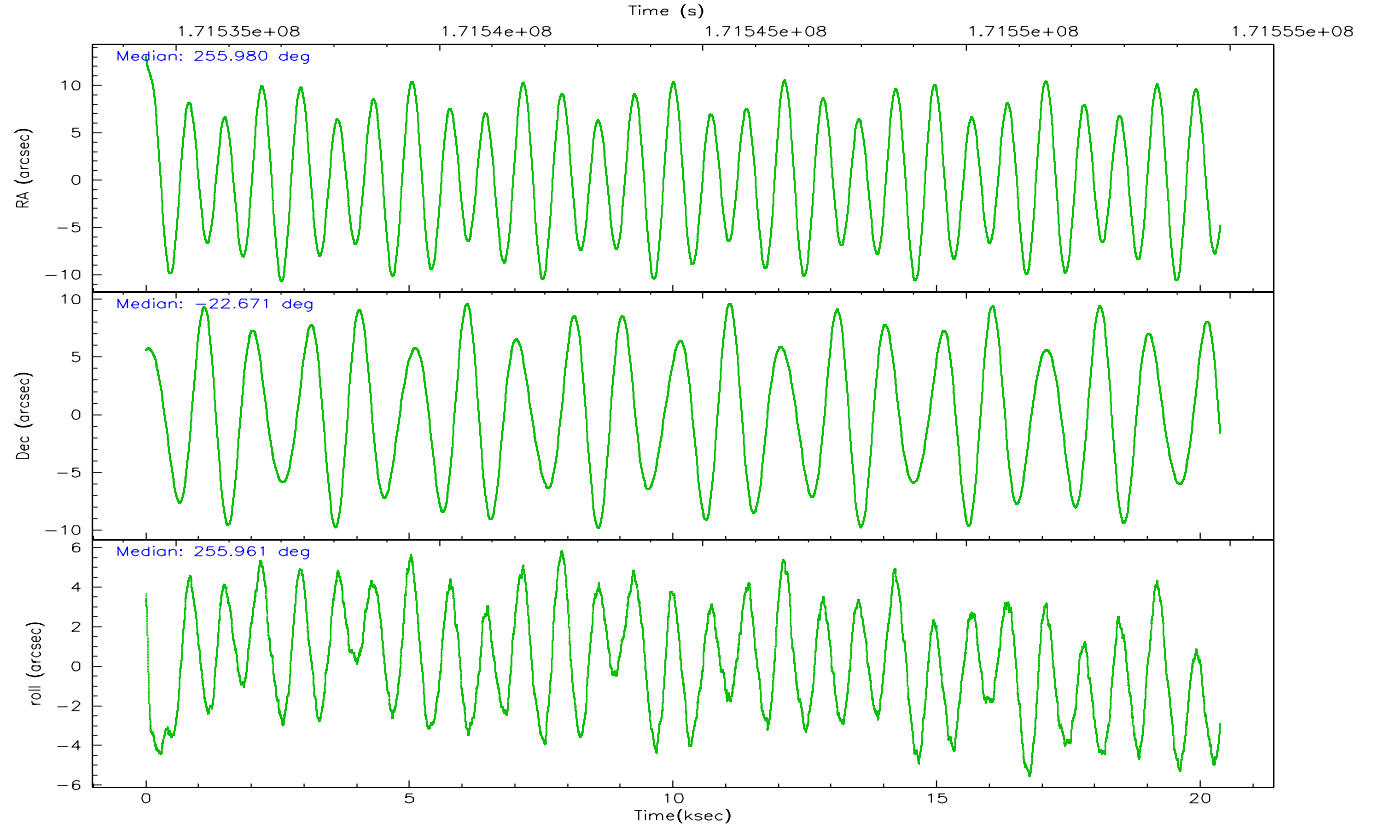
	ccd 2	ccd 3	ccd 6	ccd 7	ccd 8
grade 0 events	8944	8501	8669	5119	13364
	7%	6%	6%	2%	8%
grade 1 events	75	70	63	83	99
	0%	0%	0%	0%	0%
grade 2 events	3067	3024	3431	17628	7467
	2%	2%	2%	9%	4%
grade 3 events	1458	1476	1603	3841	3466
	1%	1%	1%	2%	2%
grade 4 events	1443	1532	1491	3921	3405
	1%	1%	1%	2%	2%
grade 5 events	4762	5494	5595	11290	7353
	3%	4%	4%	6%	4%
grade 6 events	2387	2584	3092	43686	8514
	1%	2%	2%	24%	5%
grade 7 events	100074	103404	107138	92693	117258
	81%	82%	81%	51%	72%

2.2 Compared Parameters

Parameter	Planned	Actual	Parameter	Planned	Actual
Instrument	ACIS	ACIS	Obspar format version number	6	6
Detector	ACIS-23678	ACIS-23678	Obspar file type	PREDICTED	ACTUAL
Grating	NONE	NONE	Obspar update status	NONE	UPDATED
Data mode	VFAINT	VFAINT	On-chip summing requested	N	N
Observation mode	POINTING	POINTING	Subarray requested	NONE	NONE
Pointing RA	255.971086	255.9795942487069	Alternating exposures requested	N	N
Pointing Dec	-22.644679	-22.67071368881246	Primary exposure time	0.000000	3.1
Pointing Roll	255.804243	255.9641550238266			
SIM focus pos (mm)	-0.684267	-0.6828225247311905			
SIM defocus (mm)	0	0.001444936568705701			
SIM translation stage pos (mm)	-190.132523	-190.1425803651734			
SIM translation stage offset (mm)	0	0.01005778216563158			
Observation start time	171534615.184000	171533636.45985			
Observation start date	2003-06-09T08:29:11	2003-06-09T08:13:56			
Observation end time	171554815.184000	171555551.98578			
Observation end date	2003-06-09T14:05:51	2003-06-09T14:19:11			
Read mode	TIMED	TIMED			

2.3 Aspect



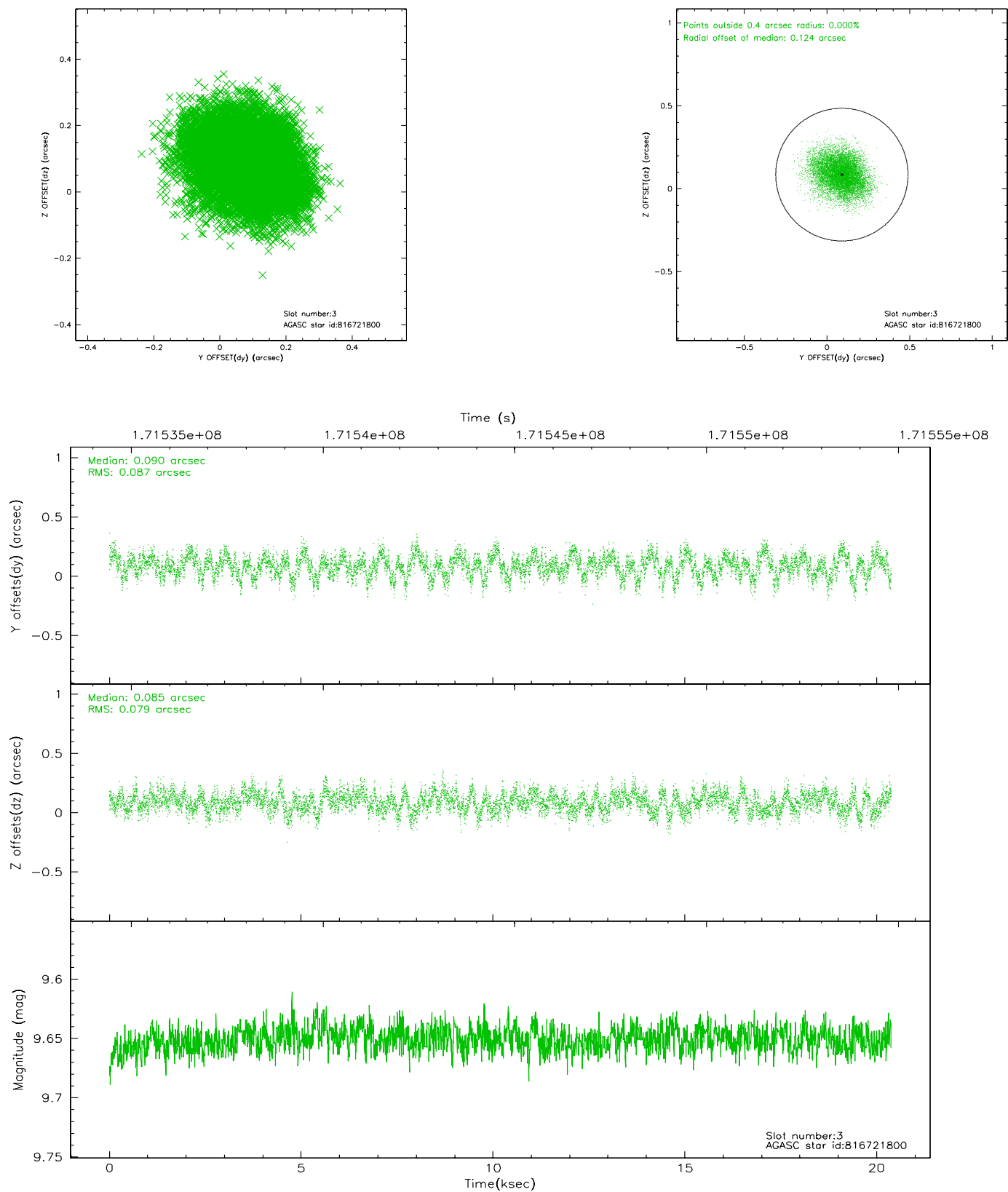


Slot Statistics

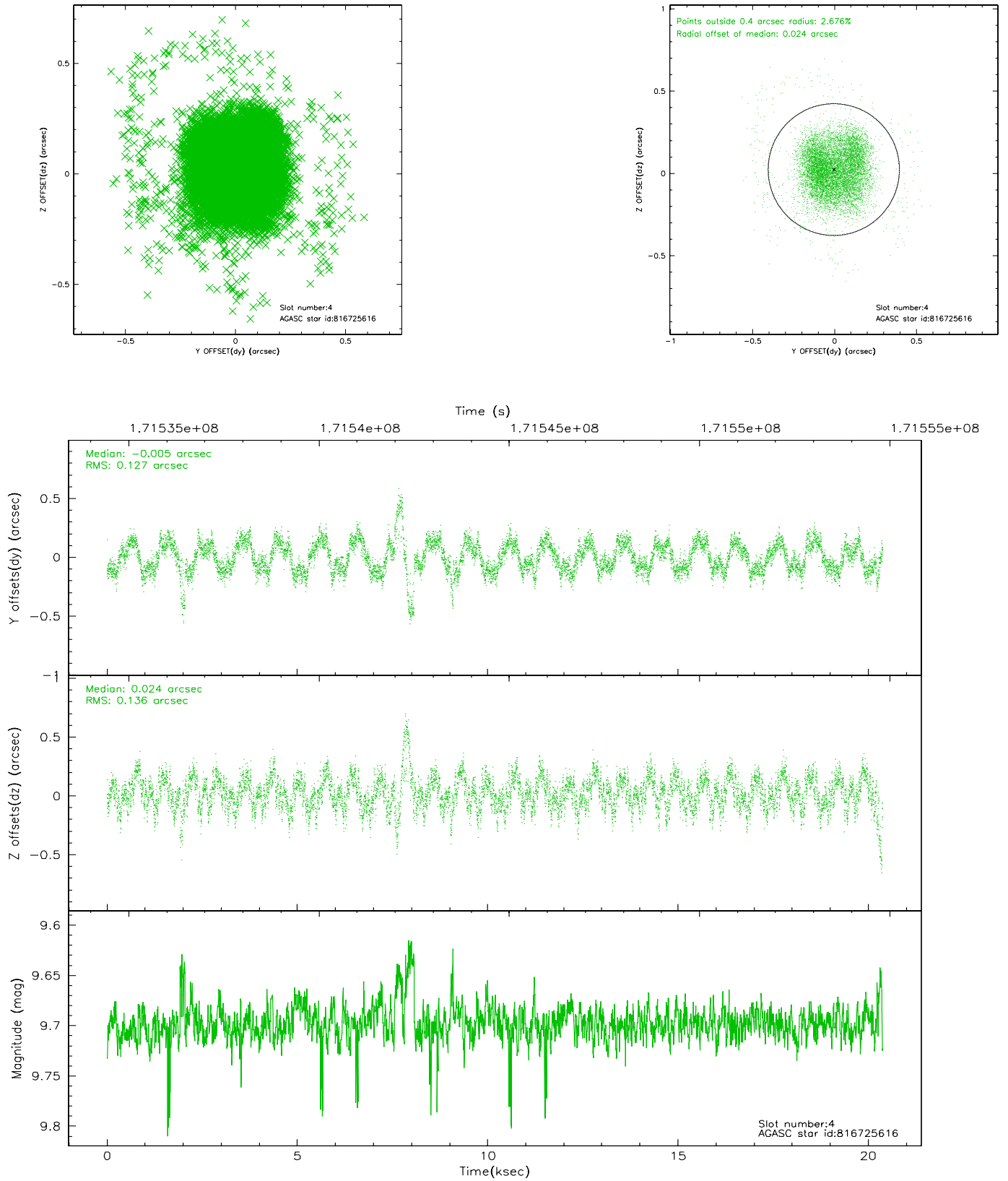
slot	status	id	mag	n_pts	med_dy	med_dz	dr1	dr2	ra	dec	mean_y	mean_z
0	FID	ACIS-S-1	7.19	4970	0.012	0.003	0.031	0.048	0.000000	0.000000	938.37	-1725.04
1	FID	ACIS-S-4	7.20	4969	0.002	-0.005	0.018	0.025	0.000000	0.000000	2155.91	178.89
2	FID	ACIS-S-5	7.23	4971	-0.040	0.013	0.014	0.026	0.000000	0.000000	-1810.28	172.79
3	GUIDE	816721800	9.65	9939	0.090	0.085	0.126	0.202	255.611418	-22.001924	-1946.87	-1730.98
4	GUIDE	816725616	9.70	9940	-0.005	0.024	0.188	0.301	255.331515	-22.355374	-482.55	-2319.10
5	GUIDE	892732184	7.91	9942	-0.031	-0.227	0.087	0.136	255.982486	-22.880947	815.57	244.95
6	GUIDE	892734656	9.40	9938	0.053	0.048	0.091	0.144	256.376325	-23.351492	2140.72	1923.28
7	GUIDE	892755368	9.86	9933	-0.102	0.079	0.135	0.217	256.498414	-22.856757	315.61	1884.69

2.4 Star Slots

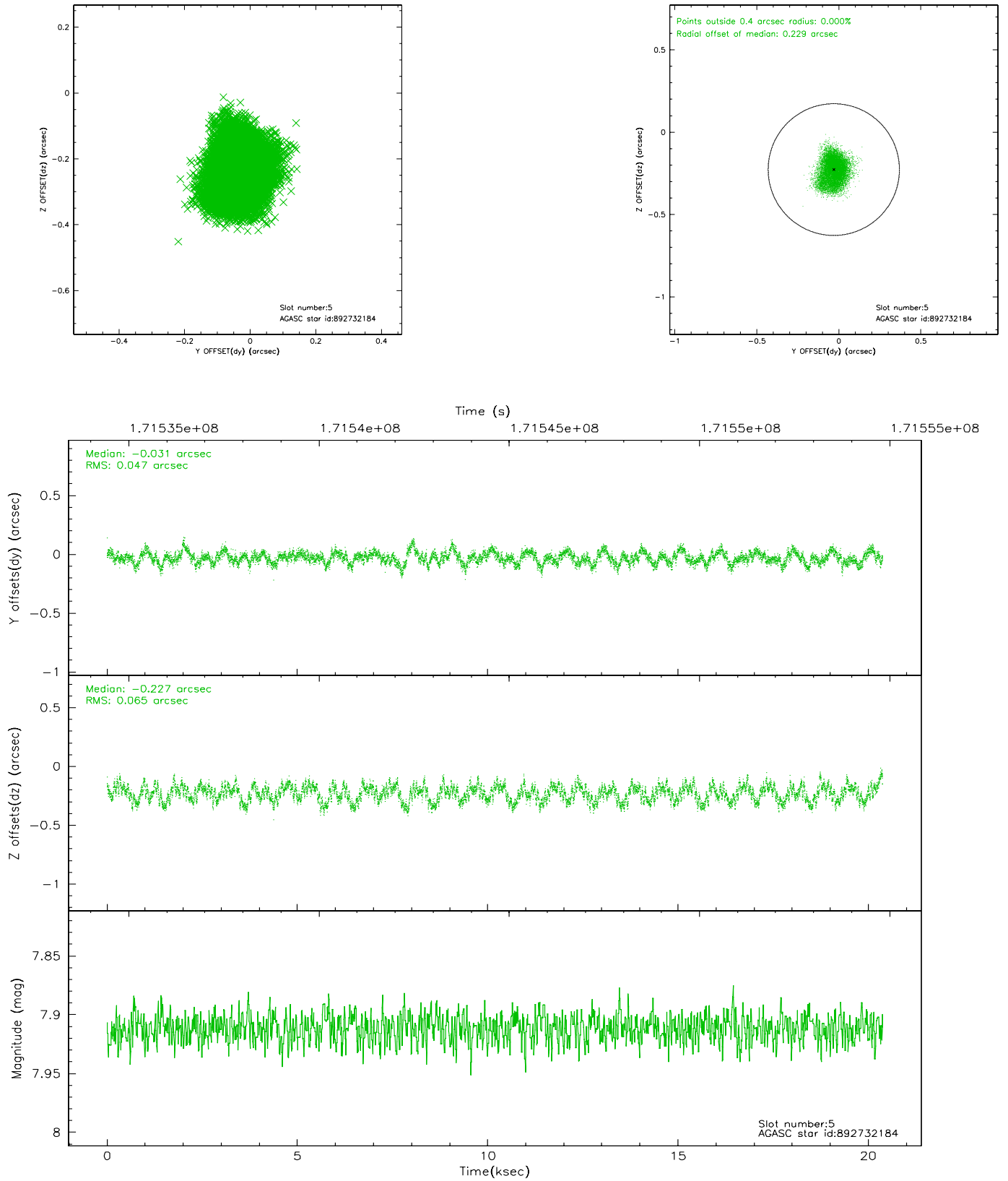
2.4.1 Slot 3



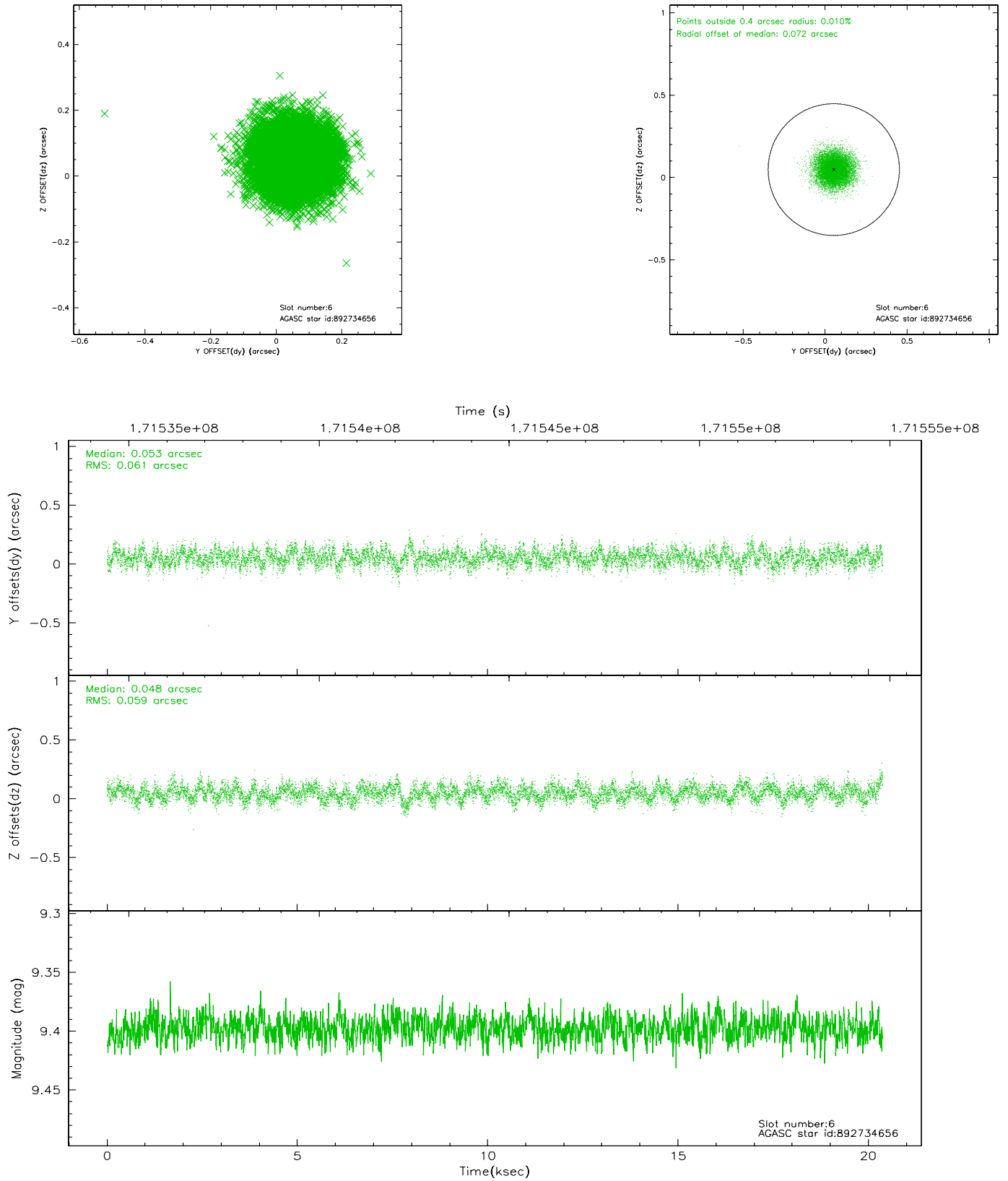
2.4.2 Slot 4



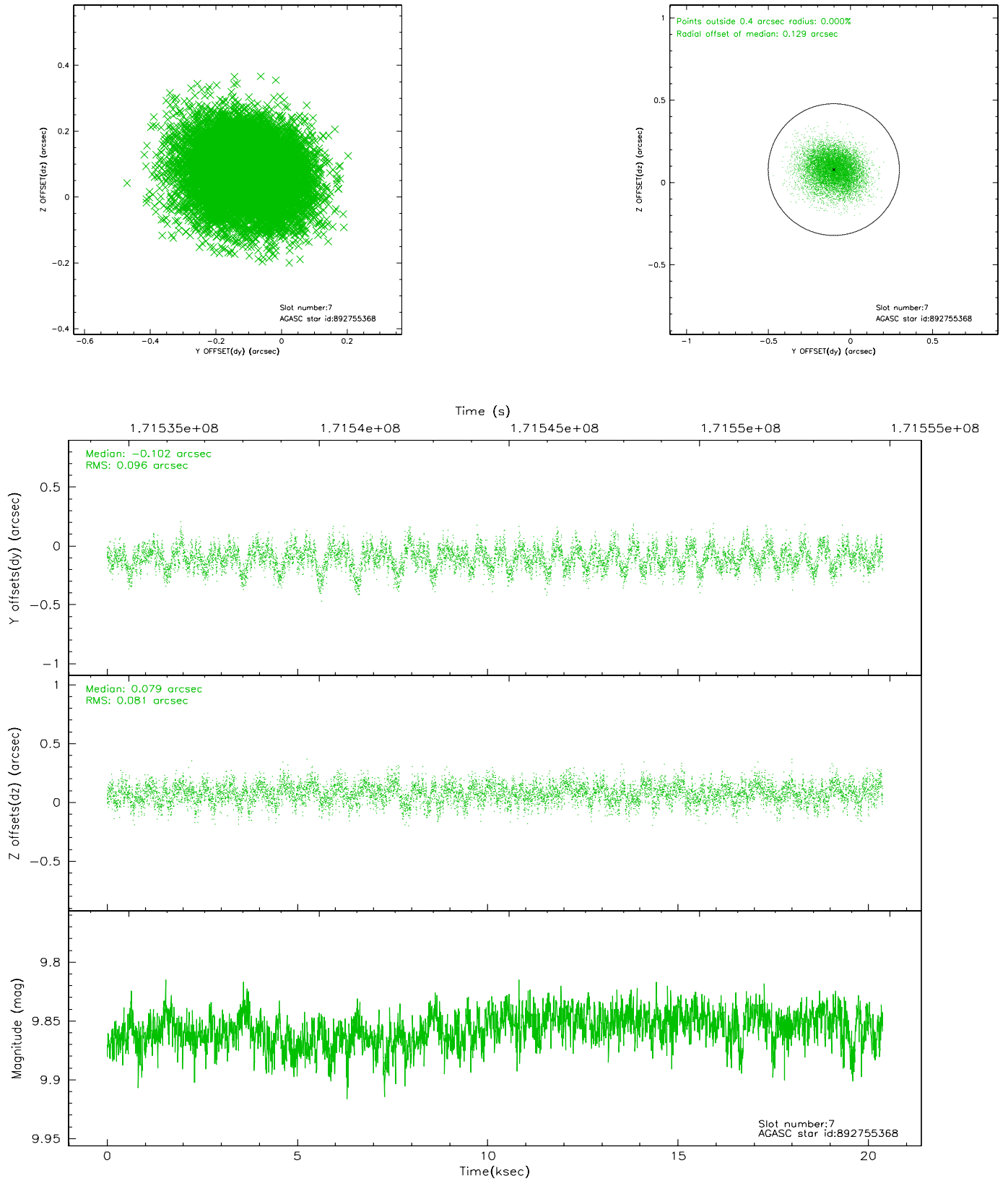
2.4.3 Slot 5



2.4.4 Slot 6

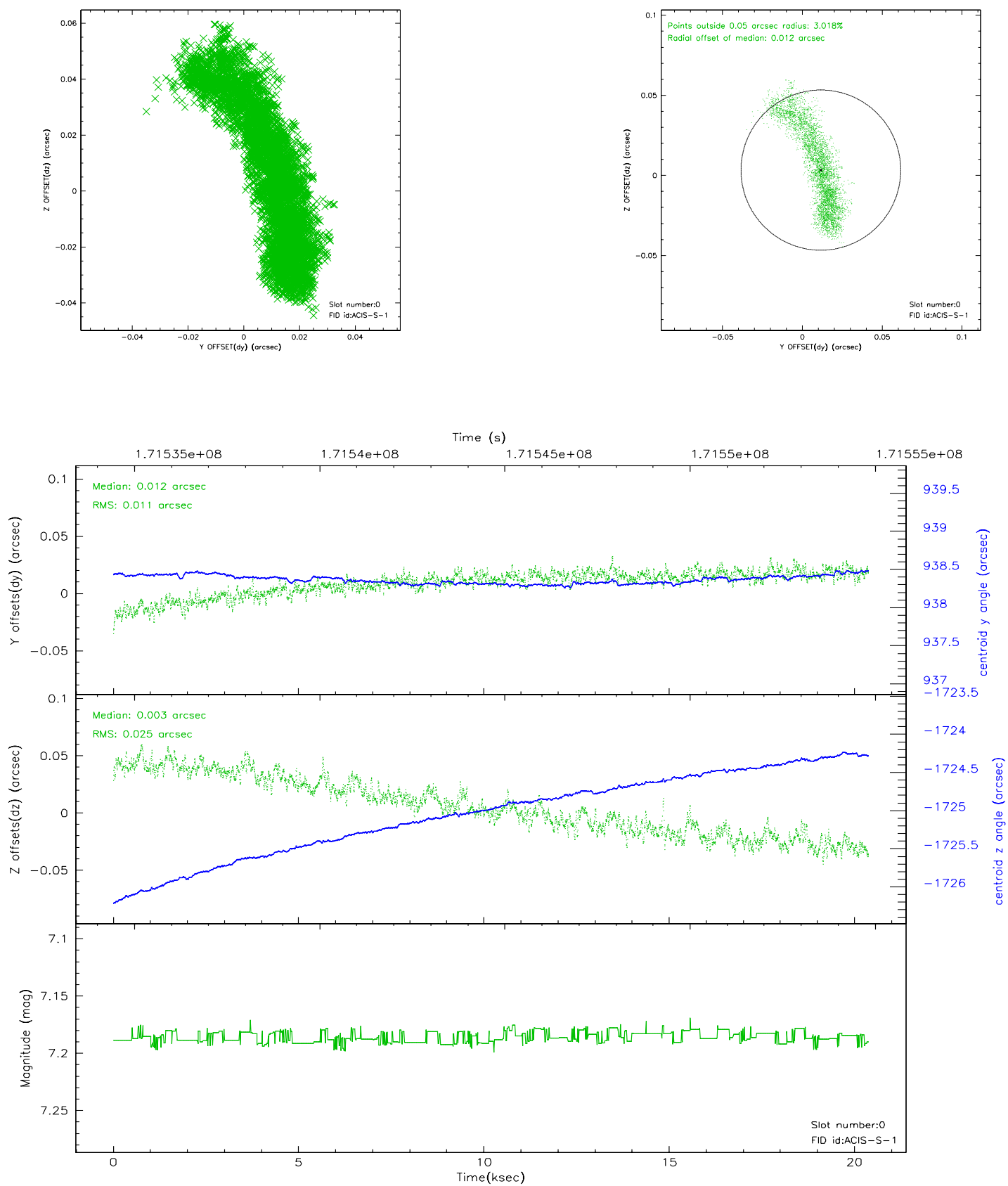


2.4.5 Slot 7

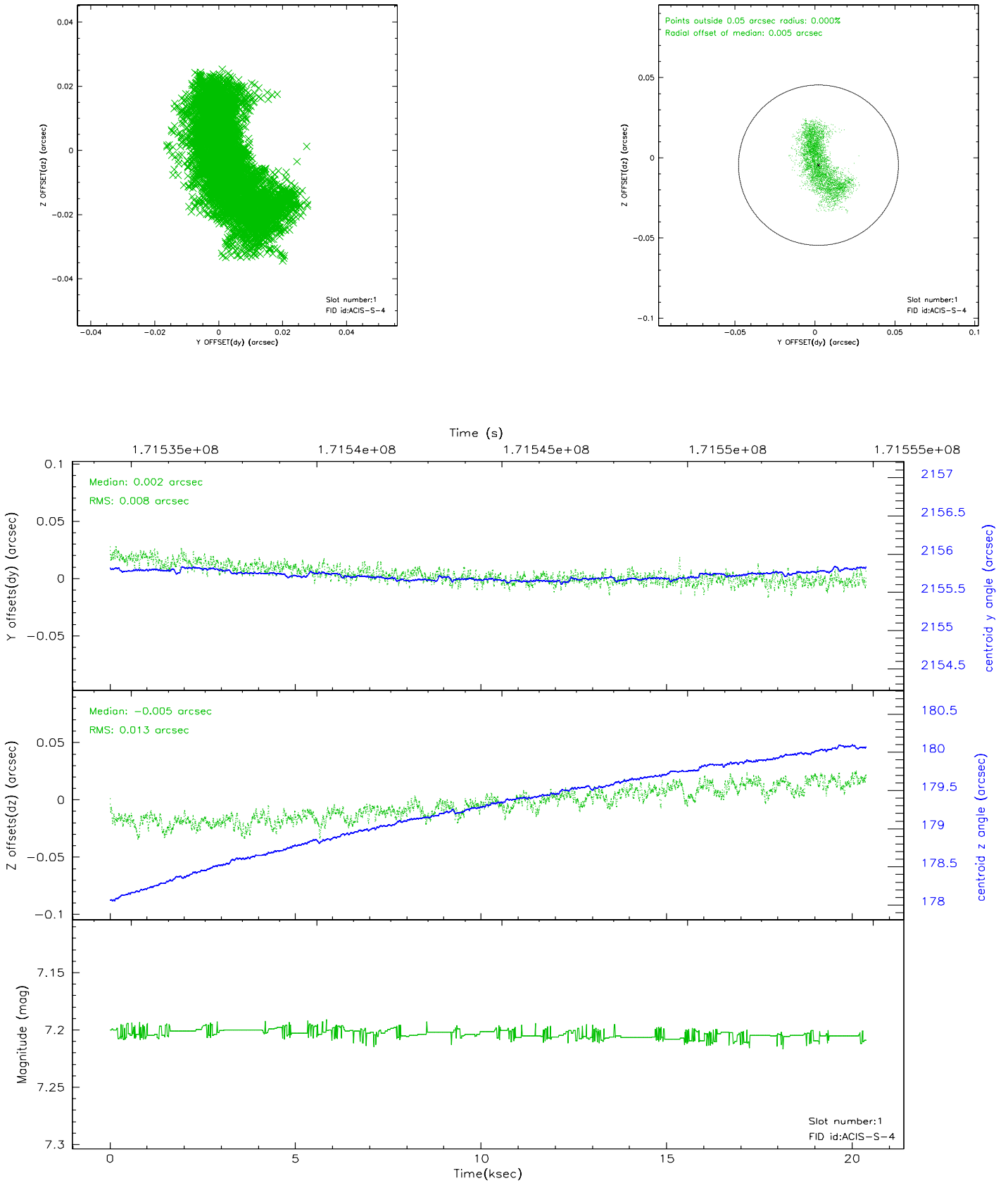


2.5 FID Slots

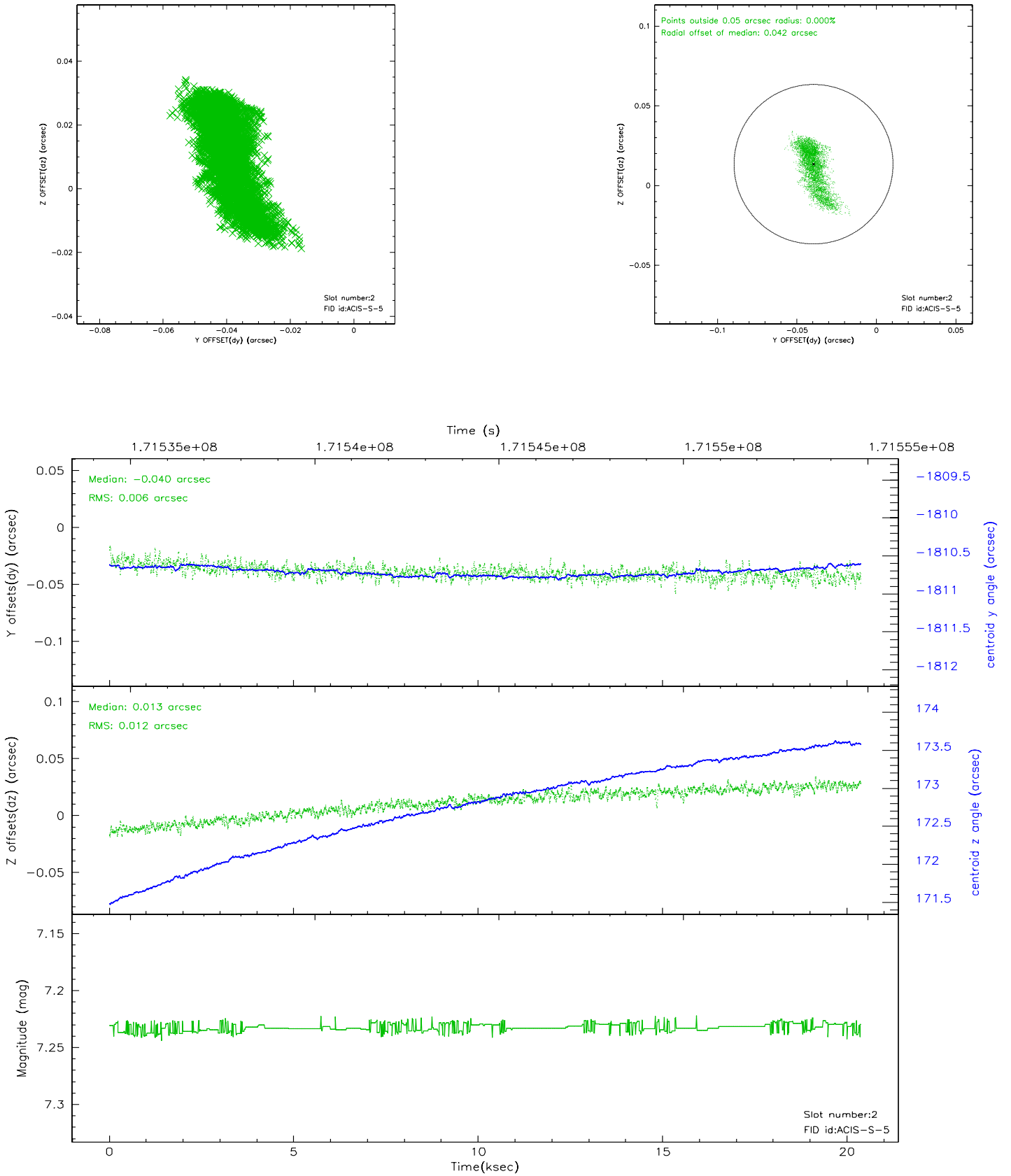
2.5.1 Slot 0



2.5.2 Slot 1



2.5.3 Slot 2



3 Point Sources

3.50 arcmin



A Summary

A.1 Status

V&V Scientist	Jen Lauer
V&V Date (YYYY-MM-DD)	2006.08.07
V&V Edition	1
V&V Disposition and Status	OK
V&V Charge Time	20.342

A.2 Comments

Monitor constraint met.