

V&V Reference Report

L2 ASCDS Version : 7.6.9

Observation 3841 - L2 Version 001
Chandra X-Ray Center

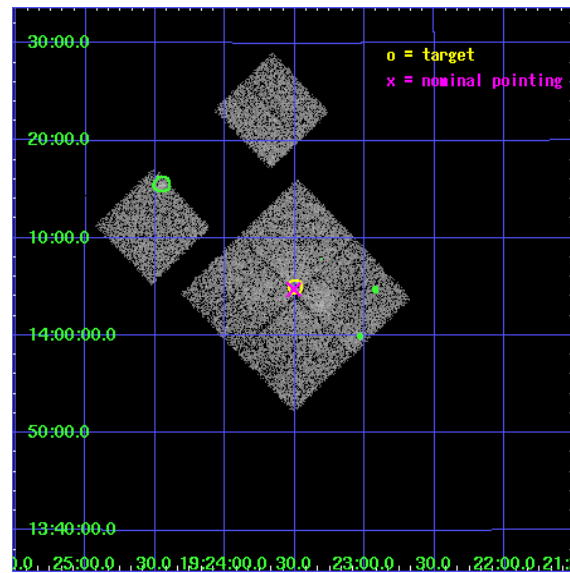
L2 Processing Date : Oct 14 2006

Contents

1	Front	2
2	OBI	3
2.1	OBI	3
2.1.1	Images	3
2.1.2	Bias	3
2.1.3	Parameters	4
2.1.4	Events	4
2.2	Compared Parameters	5
2.3	Aspect	6
2.4	Star Slots	9
2.4.1	Slot 3	9
2.4.2	Slot 4	10
2.4.3	Slot 5	11
2.4.4	Slot 6	12
2.4.5	Slot 7	13
2.5	FID Slots	14
2.5.1	Slot 0	14
2.5.2	Slot 1	15
2.5.3	Slot 2	16
3	Point Sources	17
A	Summary	18
A.1	Status	18
A.2	Comments	18

1 Front

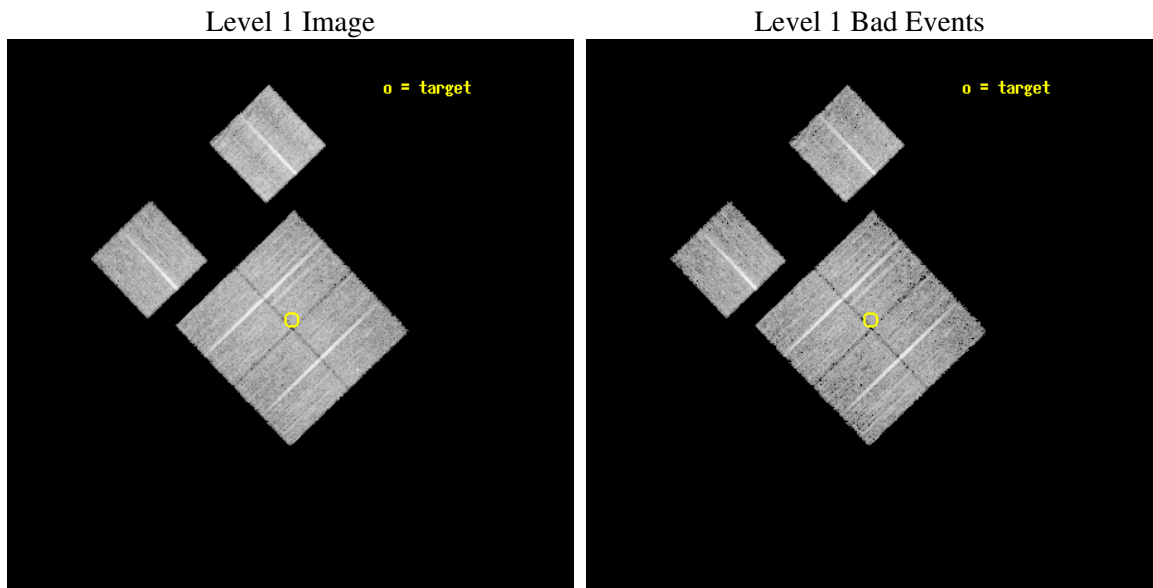
seq_num	500320
obs_id	3841
title	SUPERNOVA REMNANT(S) AND STAR-FORMING REGIONS IN THE W51 COMPLEX
observer	PROF. BON-CHUL KOO
object	W51 SOUTH
dtcycle	0
cycle	P
ra_targ	290.875
dec_targ	14.083333
ra_nom	290.87687683214
dec_nom	14.079046471852
roll_nom	316.18915204654
revision	2
ontime	12115.199954867
livetime	11961.789998141
ontime0	12115.199954867
ontime1	12115.199954867
ontime2	12115.199954867
ontime3	12115.199954867
ontime6	12111.958974689
ontime8	12115.199954867
l2events	42258



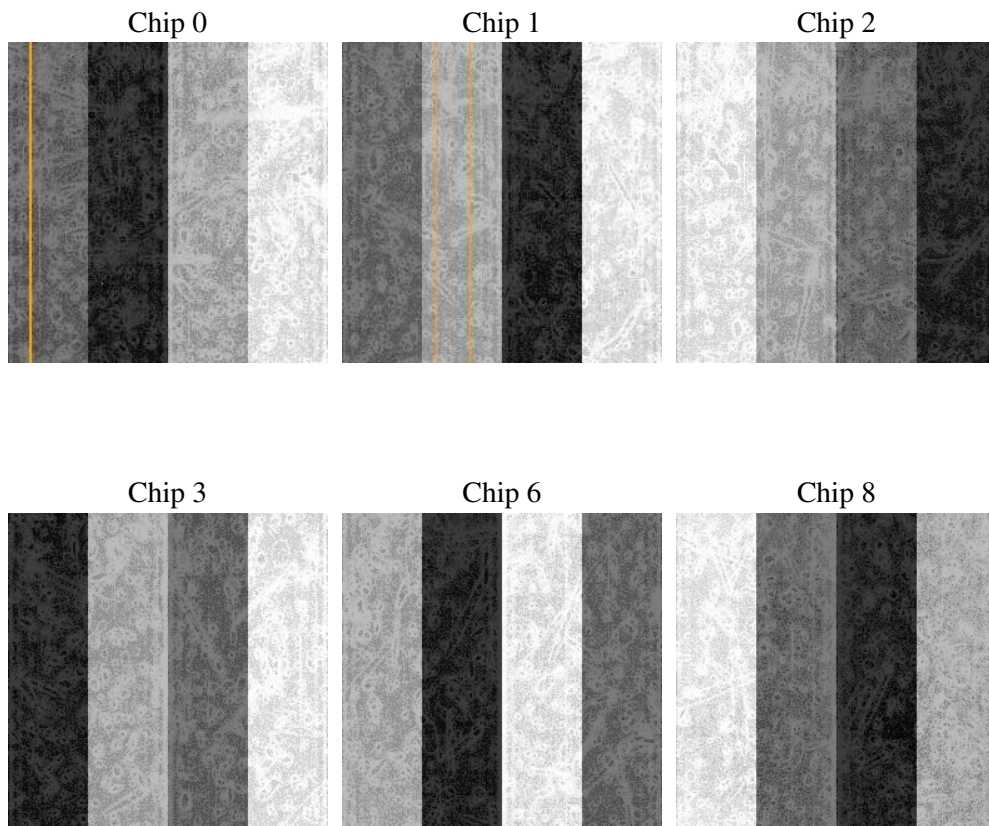
2 OBI

2.1 OBI

2.1.1 Images



2.1.2 Bias



2.1.3 Parameters

obi_num	0
ascdsver	7.6.9
caldbver	3.2.3
date	2006-10-14T21:02:43
revision	2

sched_exp_time	12000.000000
ontime	12121.336065859
ontime0	12121.33609578
ontime1	12121.336065859
ontime2	12121.336065859
ontime3	12121.336065859
ontime6	12121.336105794
ontime8	12121.336065859
l1events	403751

2.1.4 Events

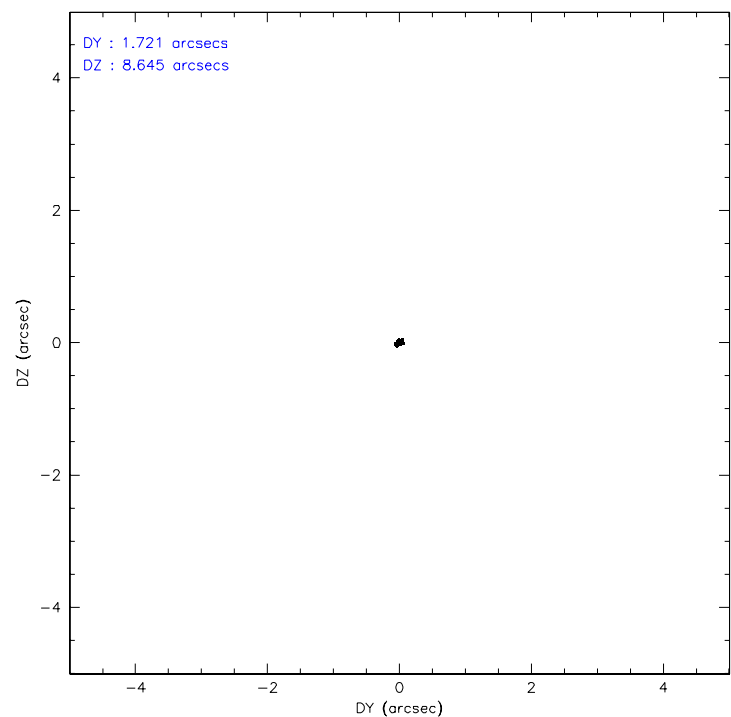
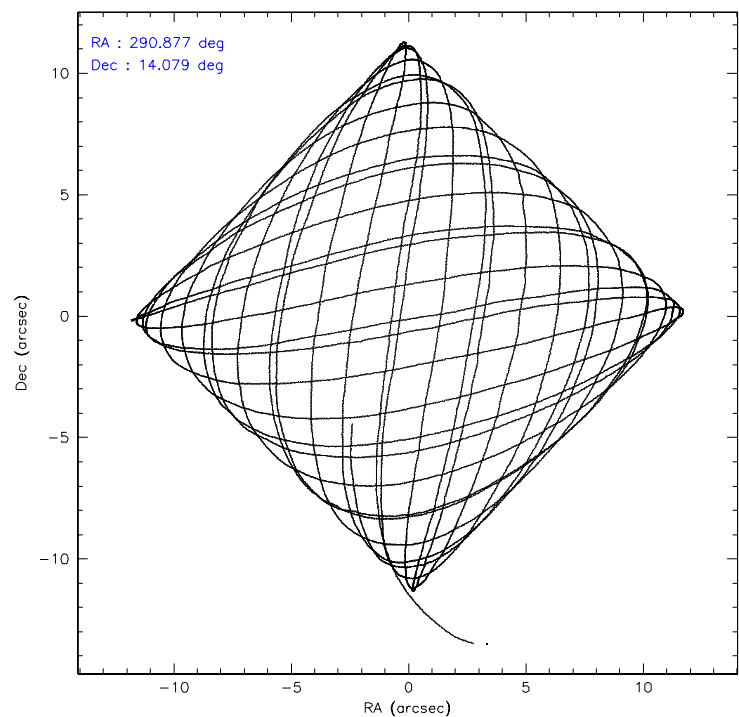
	ccd 0	ccd 1	ccd 2	ccd 3	ccd 6	ccd 8
level 1 events	60065	59430	69675	66718	64905	82958
rejected events	52303	50446	61429	57990	57405	64327
rejected %	87%	84%	88%	86%	88%	77%

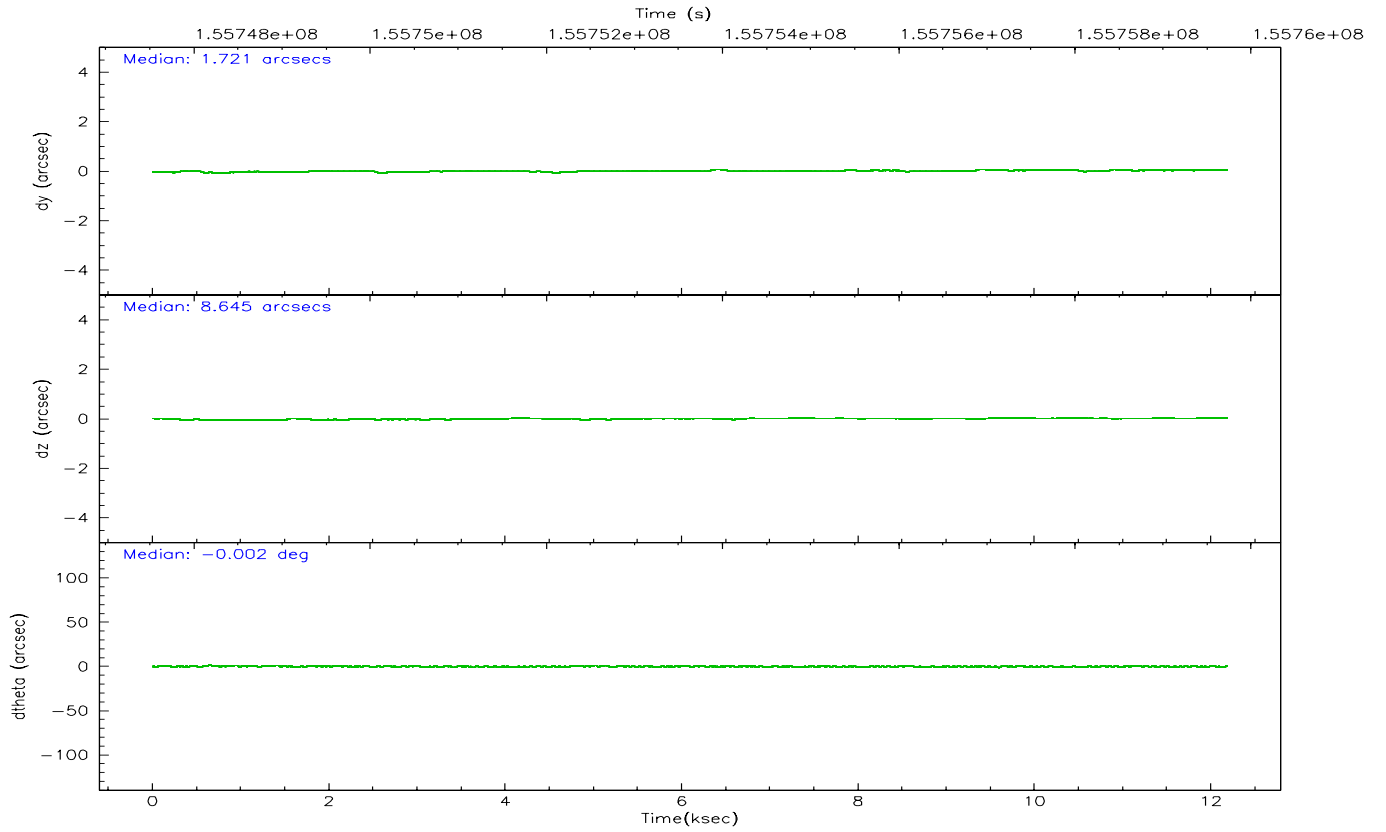
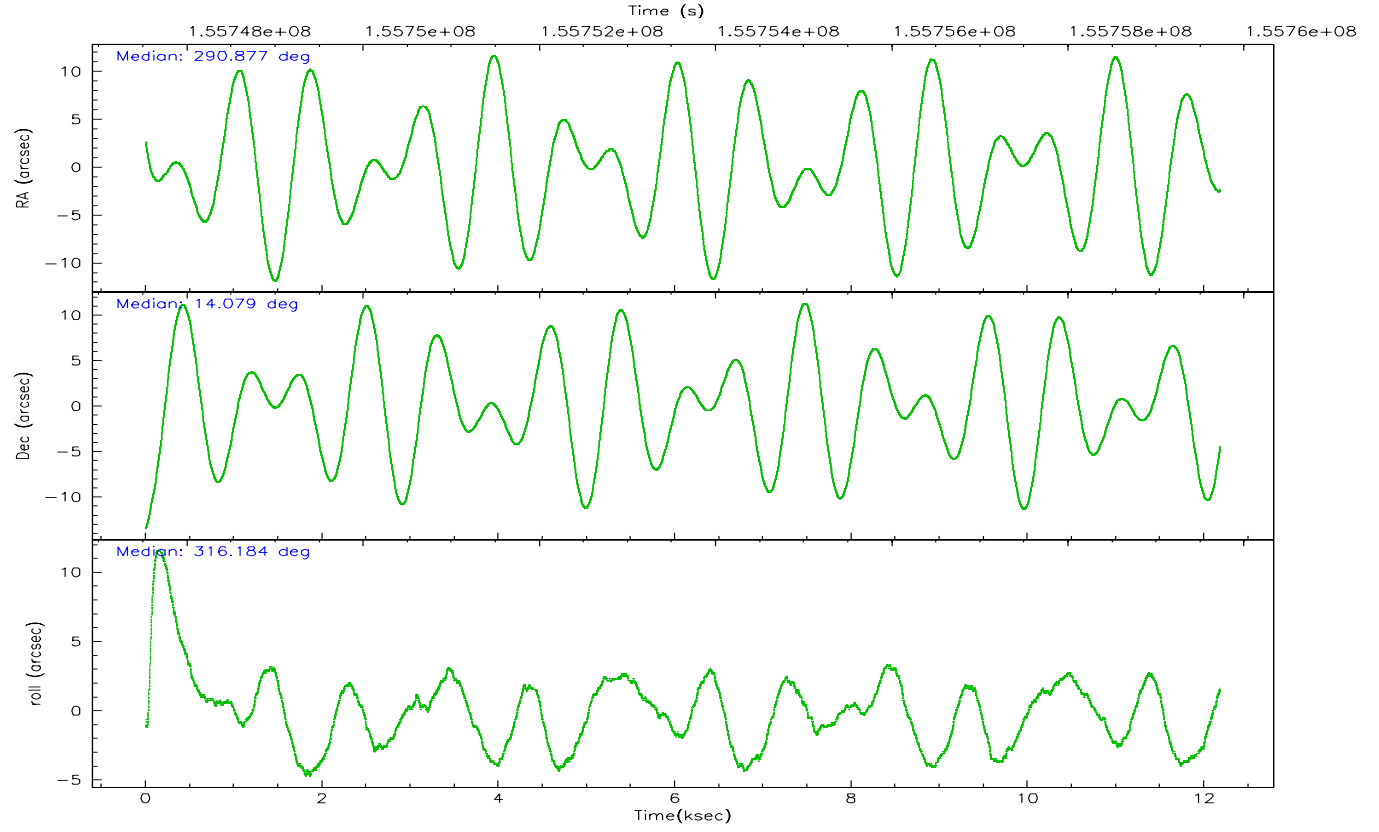
	ccd 0	ccd 1	ccd 2	ccd 3	ccd 6	ccd 8
grade 0 events	3462	4227	4041	4533	3174	5569
	5%	7%	5%	6%	4%	6%
grade 1 events	23	22	36	40	29	47
	0%	0%	0%	0%	0%	0%
grade 2 events	1611	1691	1555	1574	1437	4092
	2%	2%	2%	2%	2%	4%
grade 3 events	783	877	762	764	757	1930
	1%	1%	1%	1%	1%	2%
grade 4 events	731	810	735	724	775	1781
	1%	1%	1%	1%	1%	2%
grade 5 events	2186	2282	2042	2458	2375	3513
	3%	3%	2%	3%	3%	4%
grade 6 events	1179	1380	1155	1137	1366	5284
	1%	2%	1%	1%	2%	6%
grade 7 events	50090	48141	59349	55488	54992	60742
	83%	81%	85%	83%	84%	73%

2.2 Compared Parameters

Parameter	Planned	Actual	Parameter	Planned	Actual
Instrument	ACIS	ACIS	Obspar format version number	6	6
Detector	ACIS-012368	ACIS-012368	Obspar file type	PREDICTED	ACTUAL
Grating	NONE	NONE	Obspar update status	NONE	UPDATED
Data mode	VFAINT	VFAINT	Number of optional ACIS chips dropped	0	0
Observation mode	POINTING	POINTING	On-chip summing requested	N	N
Pointing RA	290.849441	290.8768768321389	Subarray requested	NONE	NONE
Pointing Dec	14.085500	14.07904647185186	Alternating exposures requested	N	N
Pointing Roll	315.987158	316.1891520465423	Primary exposure time	0.000000	3.2
SIM focus pos (mm)	-0.782348	-0.7809083437167272			
SIM defocus (mm)	0	0.001439871863259334			
SIM translation stage pos (mm)	-233.592463	-233.5874344608287			
SIM translation stage offset (mm)	0	-0.005018542100998502			
Observation start time	155747724.184000	155746691.88297			
Observation start date	2002-12-08T15:14:20	2002-12-08T14:58:11			
Observation end time	155759724.184000	155759858.52102			
Observation end date	2002-12-08T18:34:20	2002-12-08T18:37:38			
Read mode	TIMED	TIMED			

2.3 Aspect



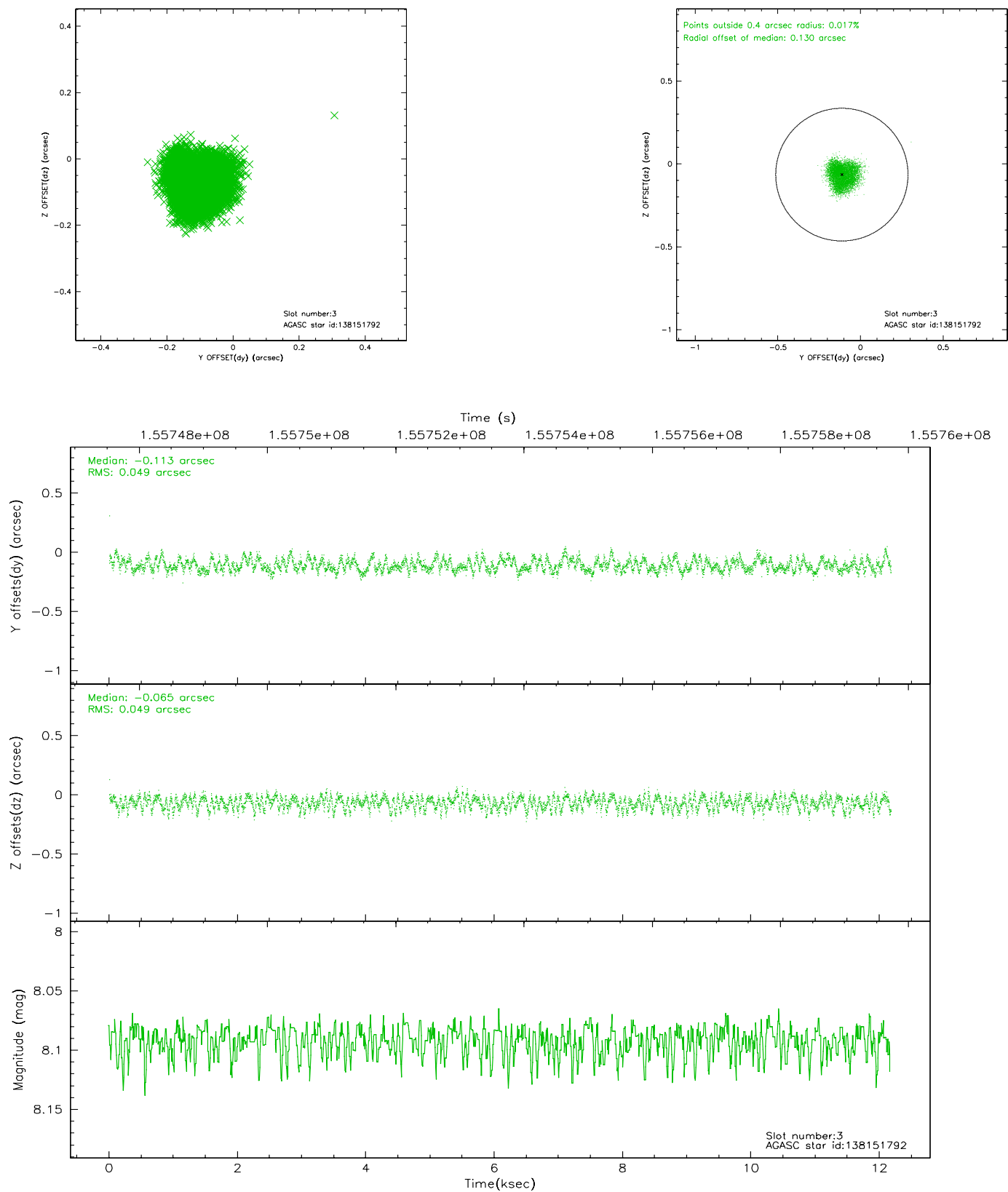


Slot Statistics

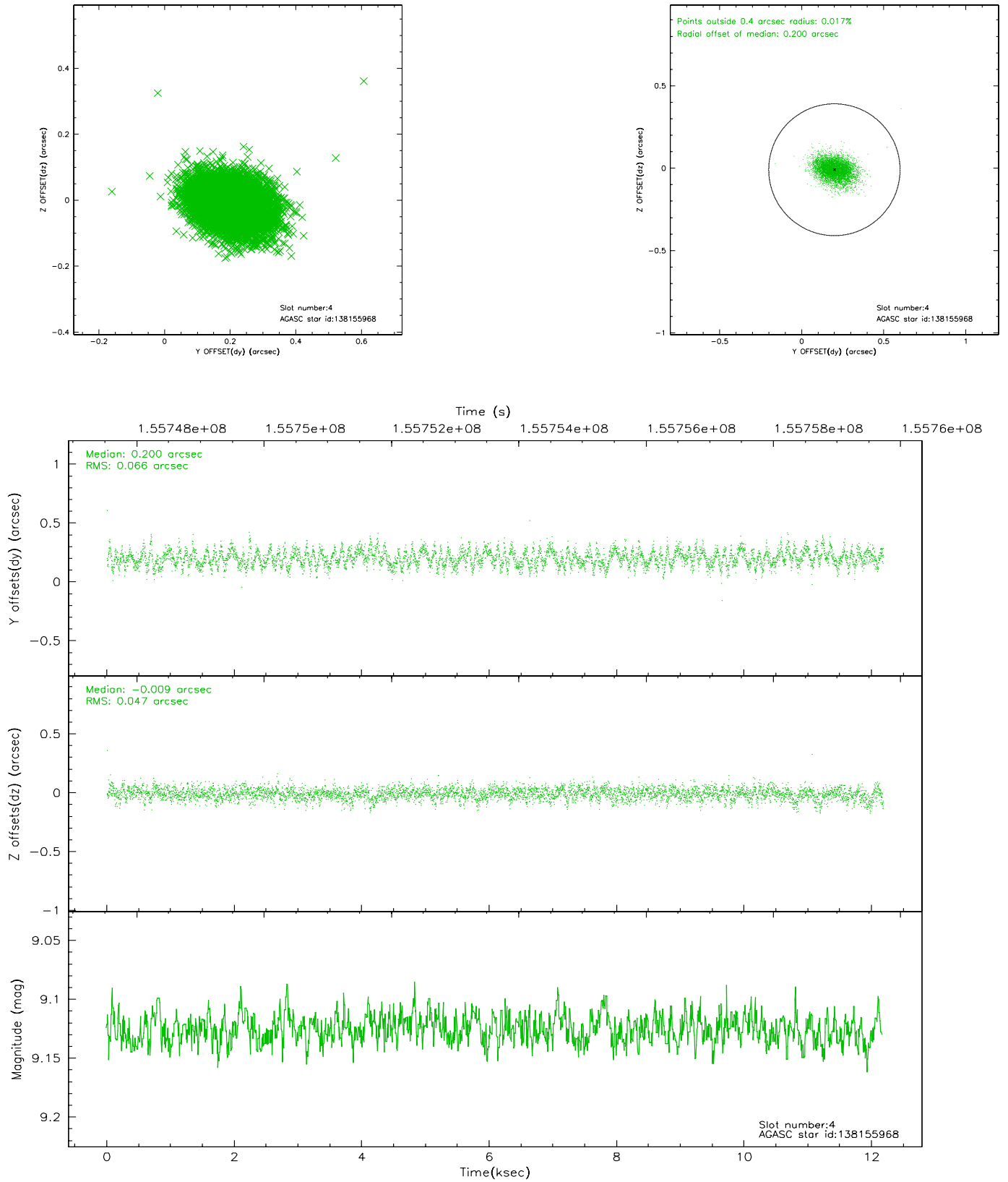
slot	status	id	mag	n_pts	med_dy	med_dz	dr1	dr2	ra	dec	mean_y	mean_z
0	FID	ACIS-I-1	7.24	2971	-0.057	0.097	0.006	0.010	0.000000	0.000000	938.05	-831.99
1	FID	ACIS-I-5	7.24	2971	-0.021	0.014	0.006	0.010	0.000000	0.000000	-1809.80	1065.22
2	FID	ACIS-I-6	7.26	2970	-0.013	-0.041	0.007	0.011	0.000000	0.000000	403.19	1710.13
3	GUIDE	138151792	8.09	5943	-0.113	-0.065	0.076	0.112	290.048456	14.138751	-2146.43	-1801.78
4	GUIDE	138155968	9.13	5943	0.200	-0.009	0.084	0.139	290.713024	13.375477	1433.45	-2170.29
5	GUIDE	139861080	8.60	5941	0.056	0.031	0.063	0.100	291.366435	13.701100	2261.94	262.52
6	GUIDE	138158720	8.39	5939	-0.183	-0.008	0.069	0.111	289.966920	14.063989	-2165.23	-2193.08
7	GUIDE	139860136	8.53	5942	0.042	0.053	0.090	0.139	291.441042	14.451940	565.43	2383.43

2.4 Star Slots

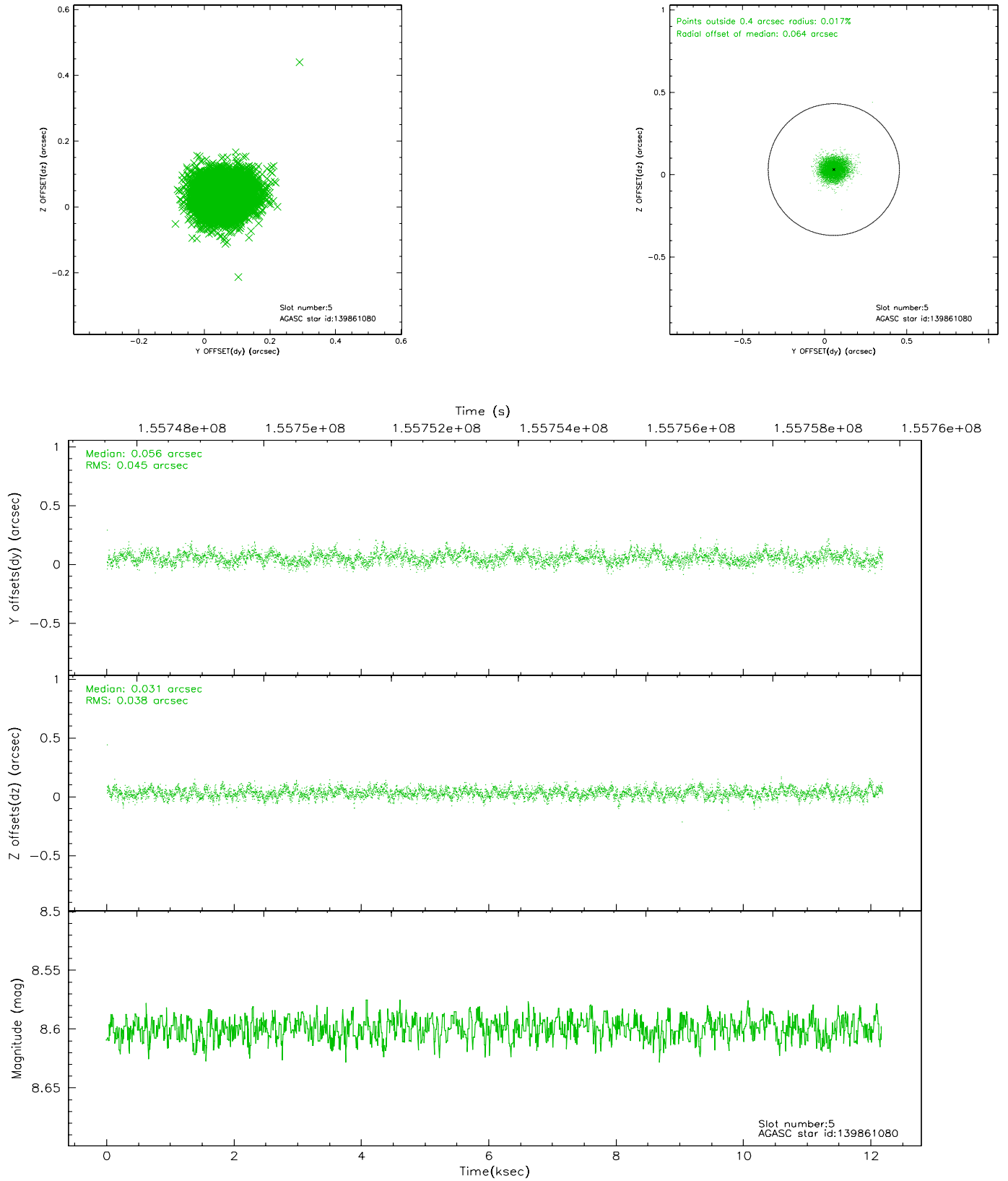
2.4.1 Slot 3



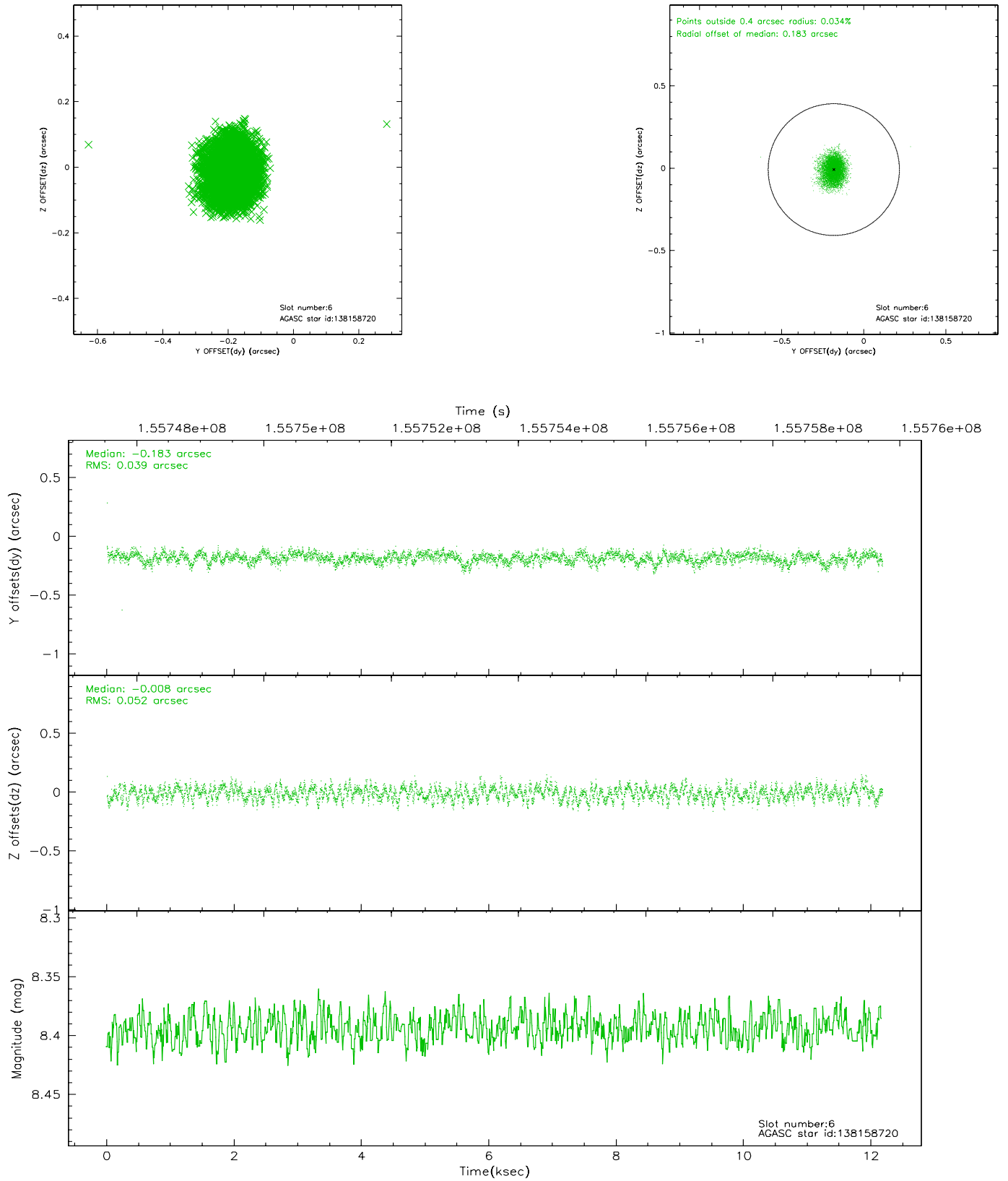
2.4.2 Slot 4



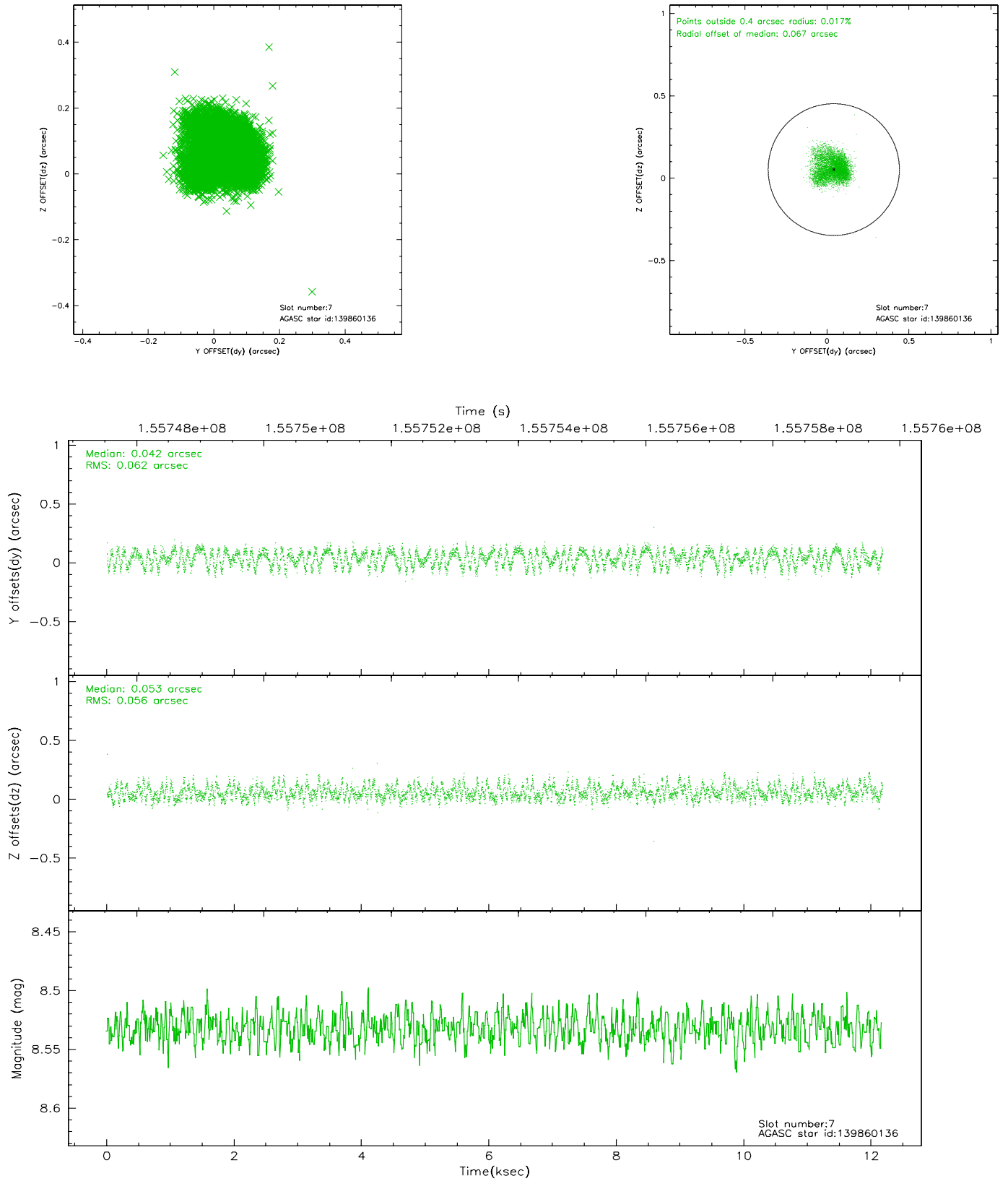
2.4.3 Slot 5



2.4.4 Slot 6

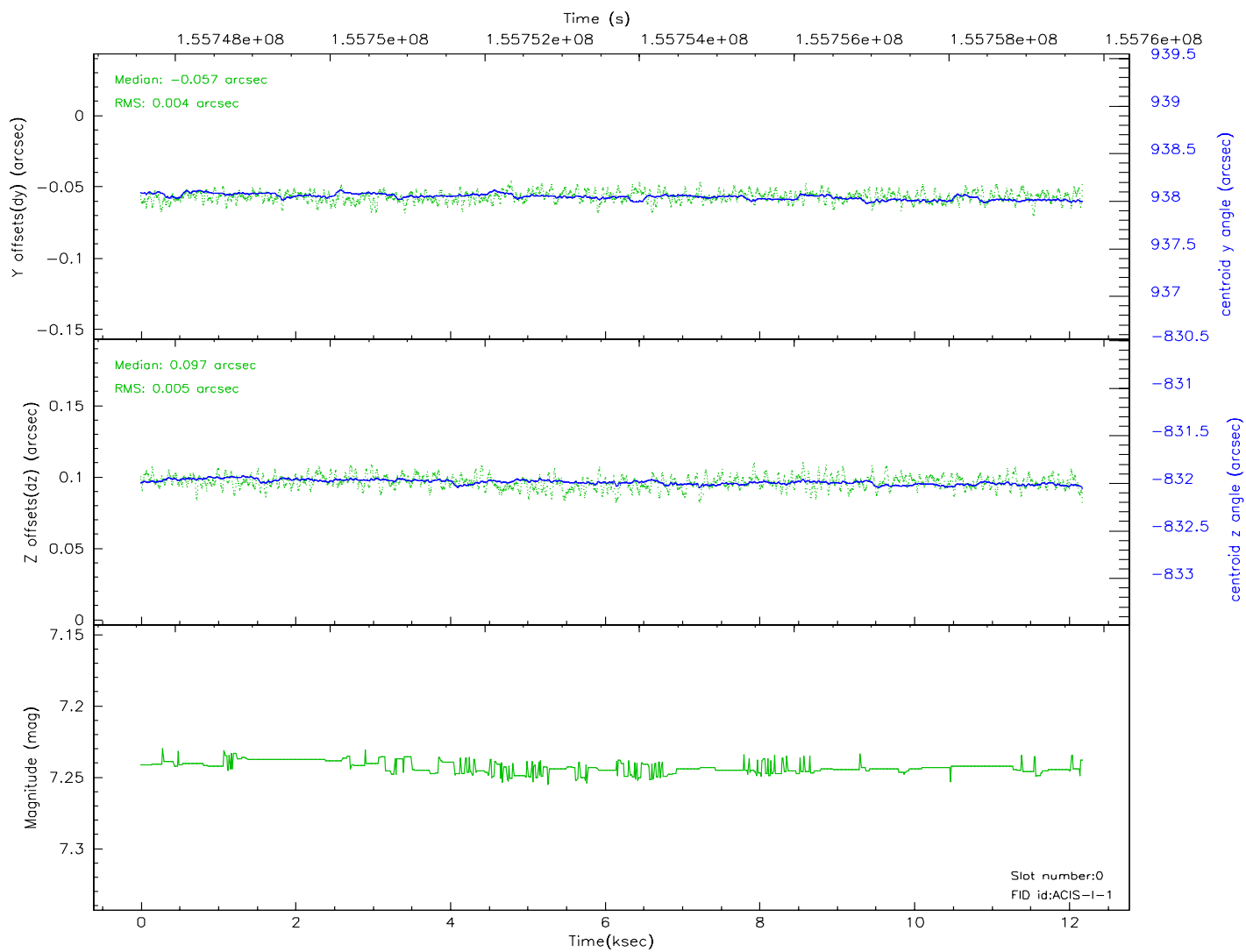
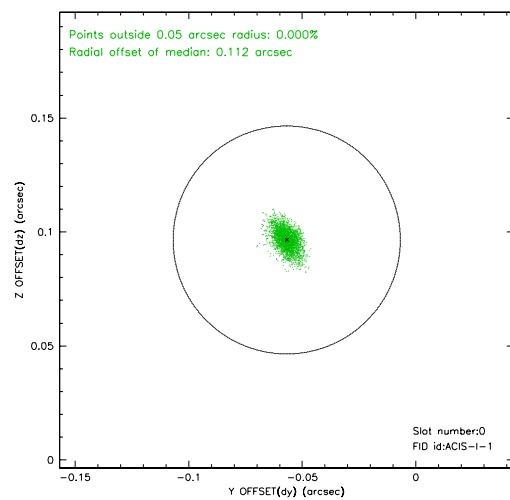
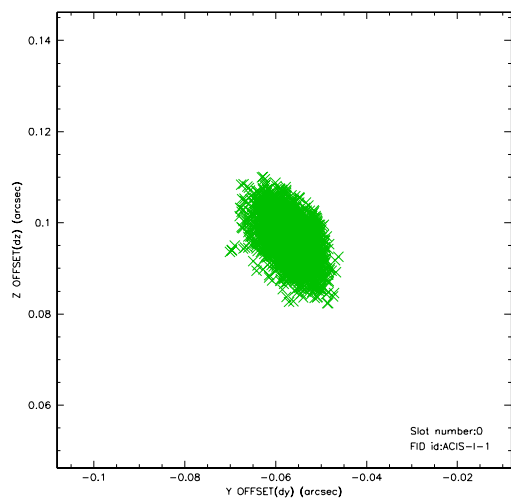


2.4.5 Slot 7

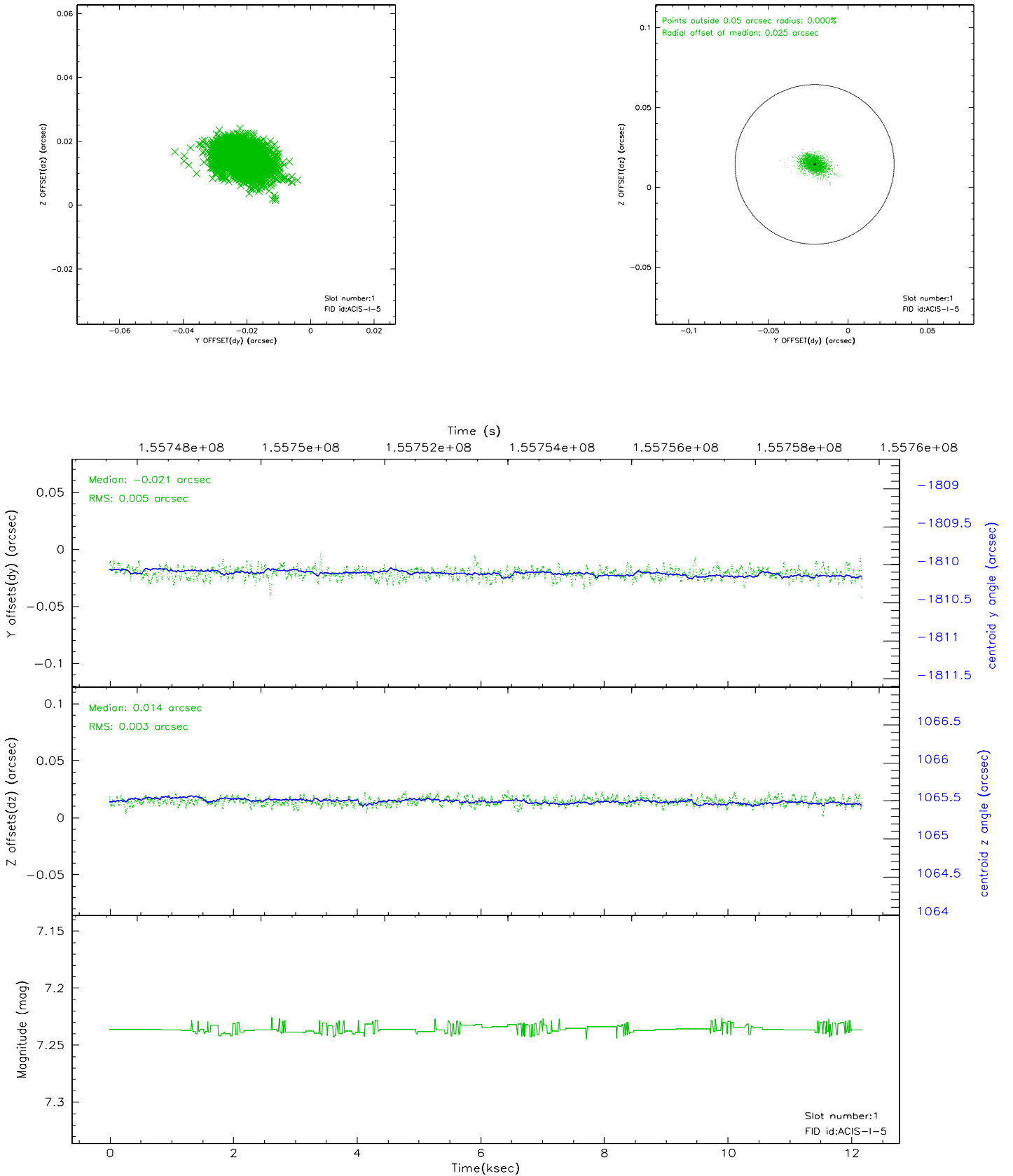


2.5 FID Slots

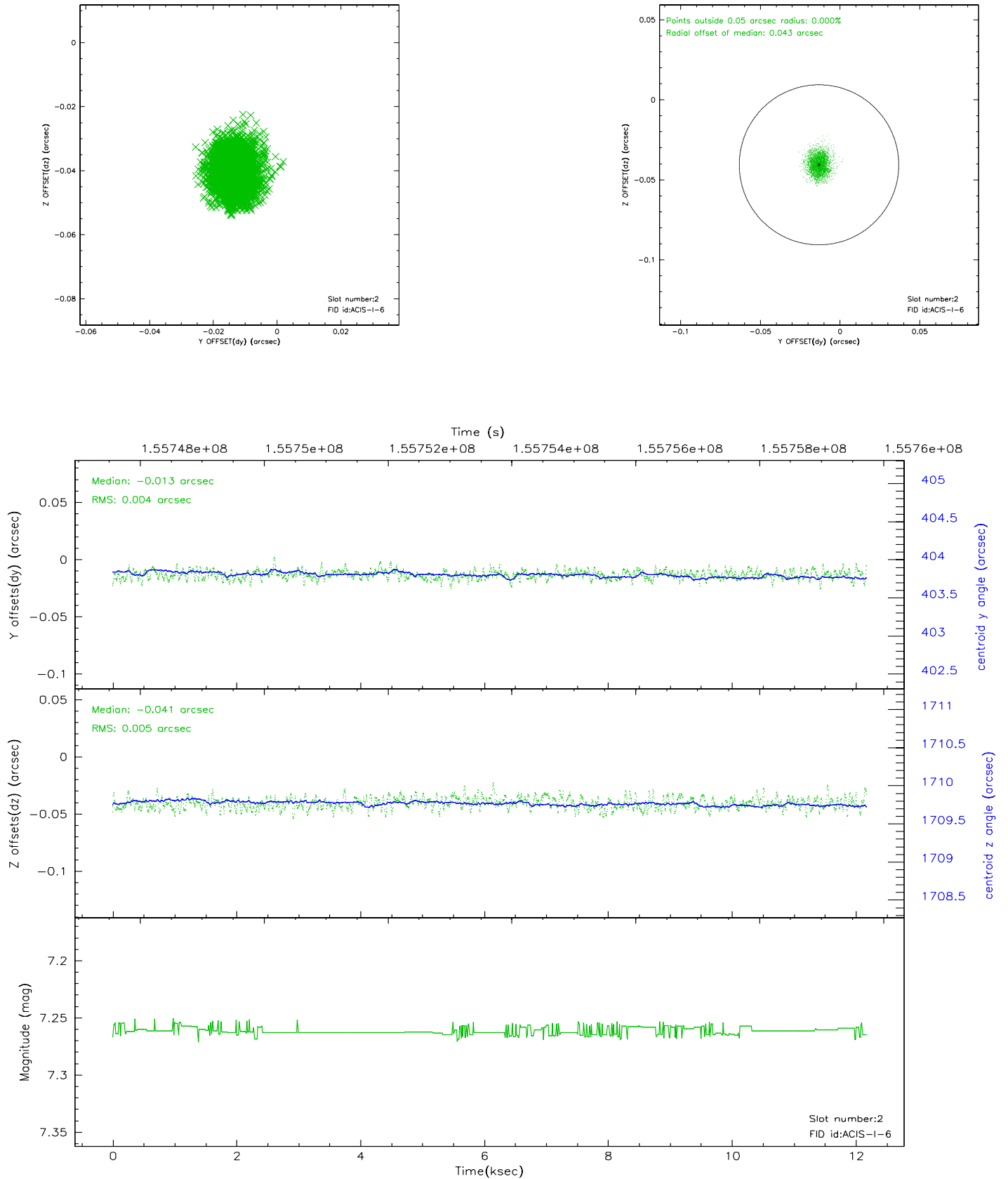
2.5.1 Slot 0



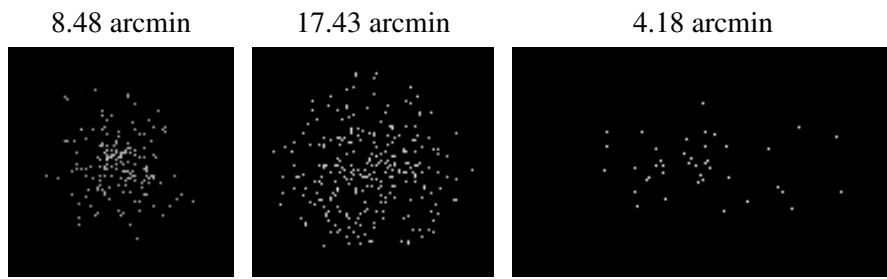
2.5.2 Slot 1



2.5.3 Slot 2



3 Point Sources



A Summary

A.1 Status

V&V Scientist	Beth Sundheim
V&V Date (YYYY-MM-DD)	2006.10.15
V&V Edition	1
V&V Disposition and Status	OK
V&V Charge Time	12.118

A.2 Comments