

V&V Reference Report

L2 ASCDS Version : 7.6.9

Observation 3561 - L2 Version 001
Chandra X-Ray Center

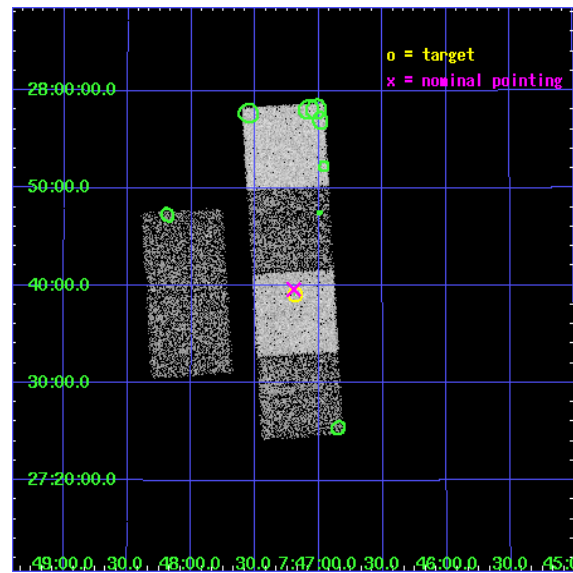
L2 Processing Date : Oct 13 2006

Contents

1	Front	2
2	OBI	3
2.1	OBI	3
2.1.1	Images	3
2.1.2	Bias	3
2.1.3	Parameters	4
2.1.4	Events	4
2.2	Compared Parameters	5
2.3	Aspect	6
2.4	Star Slots	9
2.4.1	Slot 3	9
2.4.2	Slot 4	10
2.4.3	Slot 5	11
2.4.4	Slot 6	12
2.5	FID Slots	13
2.5.1	Slot 0	13
2.5.2	Slot 1	14
2.5.3	Slot 2	15
3	Point Sources	16
A	Summary	17
A.1	Status	17
A.2	Comments	17

1 Front

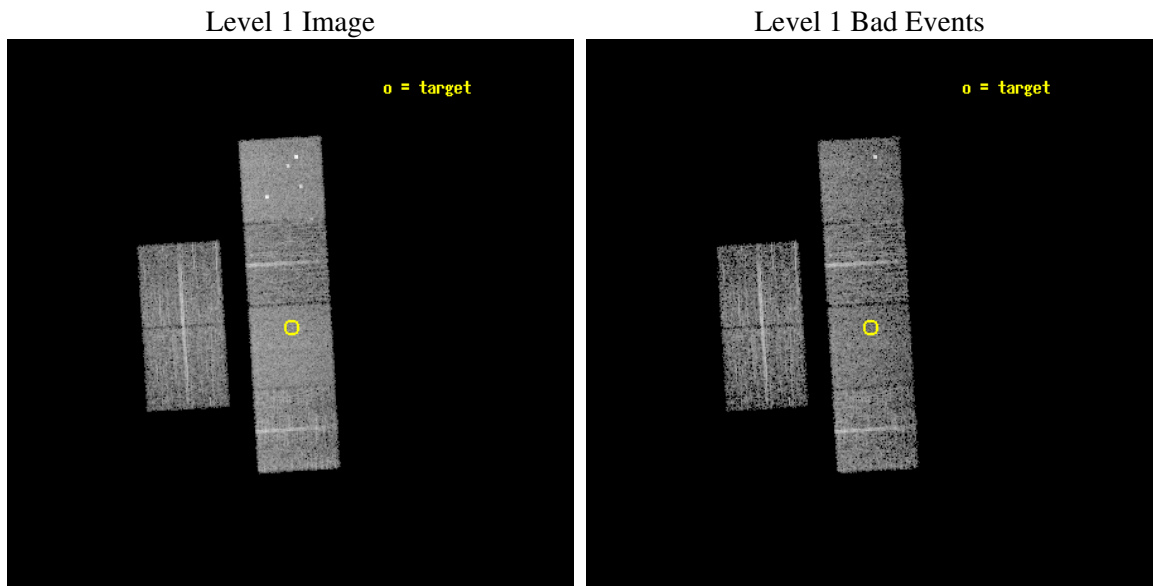
seq_num	700623
obs_id	3561
title	A CHANDRA SURVEY OF LUMINOUS, RADIO-DETECTED QUASARS AT $Z > 4$
observer	Professor Gordon Garmire
object	FIRST 0747+2739
dtcycle	0
cycle	P
ra_targ	116.796667
dec_targ	27.651
ra_nom	116.79916356945
dec_nom	27.660384647
roll_nom	86.573073033327
revision	2
ontime	5023.9999812841
livetime	4960.3830684315
ontime2	5023.9999812841
ontime3	5023.9999812841
ontime5	5023.9999812841
ontime6	5023.9999812841
ontime7	5023.9999812841
ontime8	5023.9999812841
l2events	48254



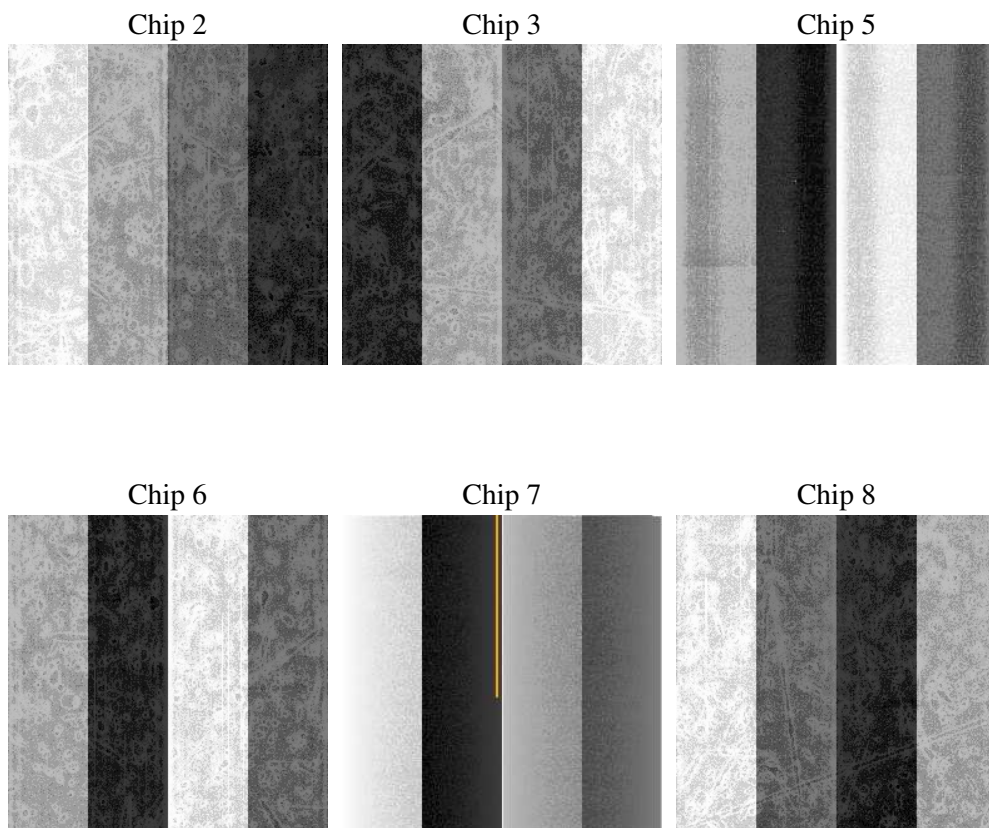
2 OBI

2.1 OBI

2.1.1 Images



2.1.2 Bias



2.1.3 Parameters

obi_num	0
ascdsver	7.6.9
caldsver	3.2.3
date	2006-10-13T18:33:28
revision	2

sched_exp_time	5000.000000
ontime	5302.2776812315
ontime2	5302.2776613235
ontime3	5302.2776613235
ontime5	5302.2776812315
ontime6	5302.2776613235
ontime7	5302.2776812315
ontime8	5302.2776613235
l1events	238657

2.1.4 Events

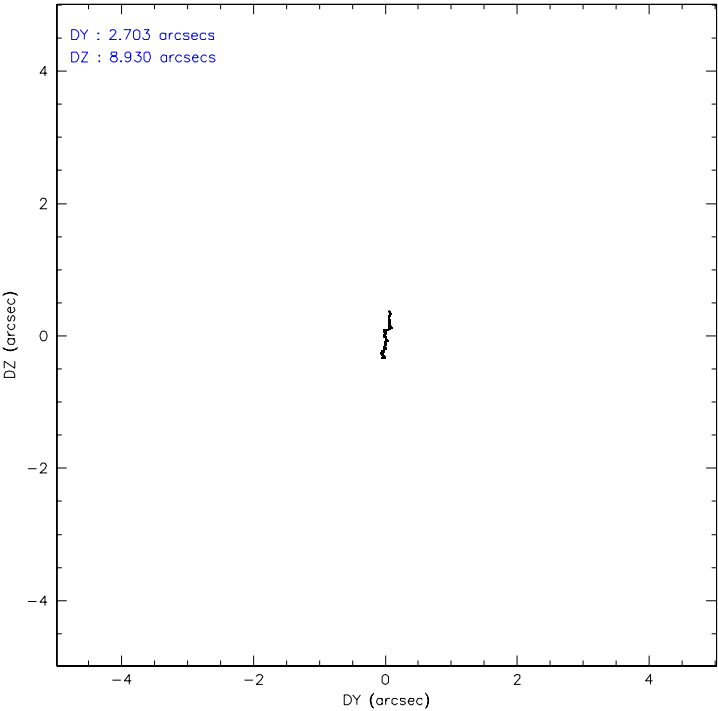
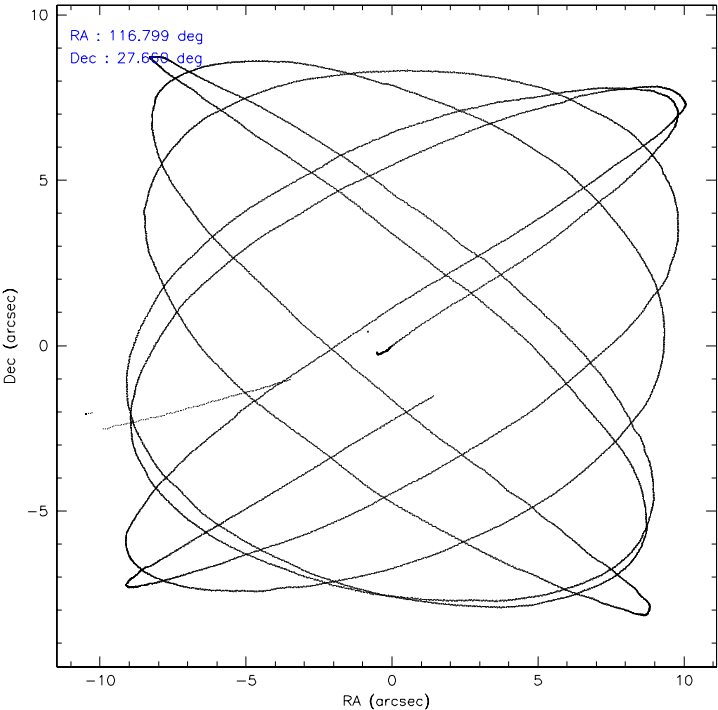
	ccd 2	ccd 3	ccd 5	ccd 6	ccd 7	ccd 8
level 1 events	33801	32337	51745	34085	44764	41925
rejected events	30070	28748	29373	30394	28748	33567
rejected %	88%	88%	56%	89%	64%	80%

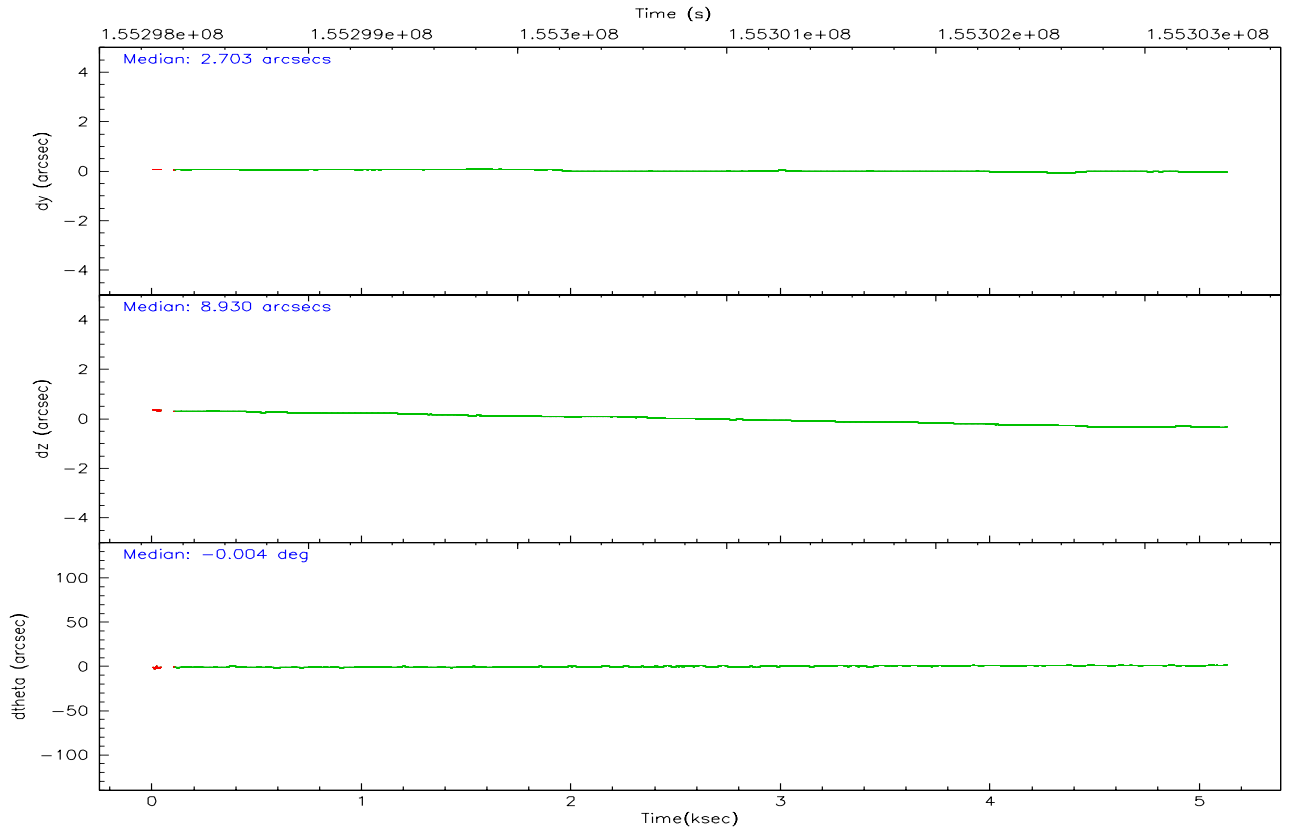
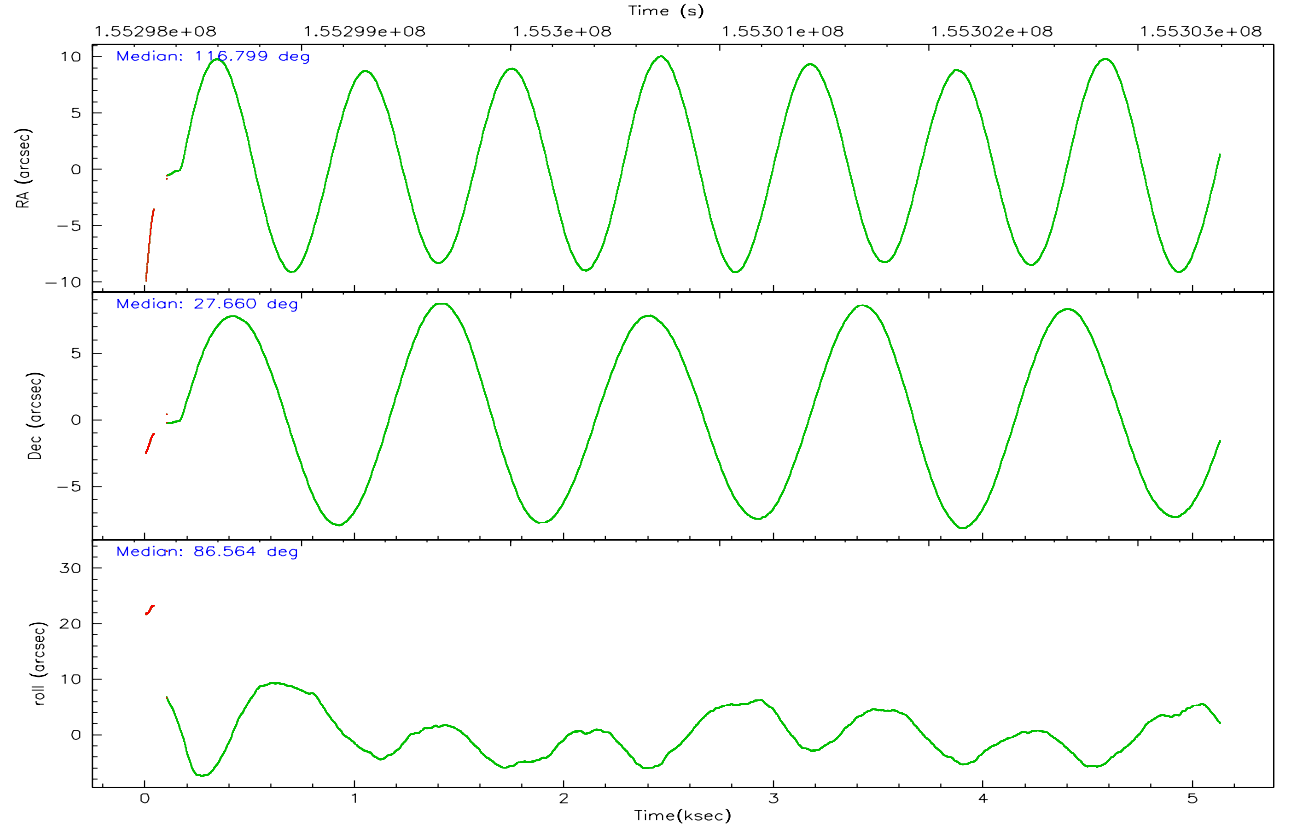
	ccd 2	ccd 3	ccd 5	ccd 6	ccd 7	ccd 8
grade 0 events	1740	1591	3162	1564	966	2903
	5%	4%	6%	4%	2%	6%
grade 1 events	14	17	195	19	33	29
	0%	0%	0%	0%	0%	0%
grade 2 events	827	749	7230	772	4166	1852
	2%	2%	13%	2%	9%	4%
grade 3 events	392	373	483	367	847	929
	1%	1%	0%	1%	1%	2%
grade 4 events	380	388	456	388	886	889
	1%	1%	0%	1%	1%	2%
grade 5 events	1296	1385	2625	1485	3074	1938
	3%	4%	5%	4%	6%	4%
grade 6 events	592	688	12343	796	10060	2247
	1%	2%	23%	2%	22%	5%
grade 7 events	28560	27146	25251	28694	24732	31138
	84%	83%	48%	84%	55%	74%

2.2 Compared Parameters

Parameter	Planned	Actual	Parameter	Planned	Actual
Instrument	ACIS	ACIS	Obspar format version number	6	6
Detector	ACIS-235678	ACIS-235678	Obspar file type	PREDICTED	ACTUAL
Grating	NONE	NONE	Obspar update status	NONE	UPDATED
Data mode	FAINT	FAINT	Number of optional ACIS chips dropped	0	0
Observation mode	POINTING	POINTING	On-chip summing requested	N	N
Pointing RA	116.813335	116.7991635694533	Subarray requested	NONE	NONE
Pointing Dec	27.636211	27.66038464700025	Alternating exposures requested	N	N
Pointing Roll	86.409859	86.57307303332709	Primary exposure time	0.000000	3.2
SIM focus pos (mm)	-0.684267	-0.6828225247311905			
SIM defocus (mm)	0	0.001444936568705701			
SIM translation stage pos (mm)	-190.132523	-190.1400660498719			
SIM translation stage offset (mm)	0	0.00754346686406393			
Observation start time	155298390.184000	155297260.62672			
Observation start date	2002-12-03T10:25:26	2002-12-03T10:07:40			
Observation end time	155303390.184000	155304207.05201			
Observation end date	2002-12-03T11:48:46	2002-12-03T12:03:27			
Read mode	TIMED	TIMED			

2.3 Aspect



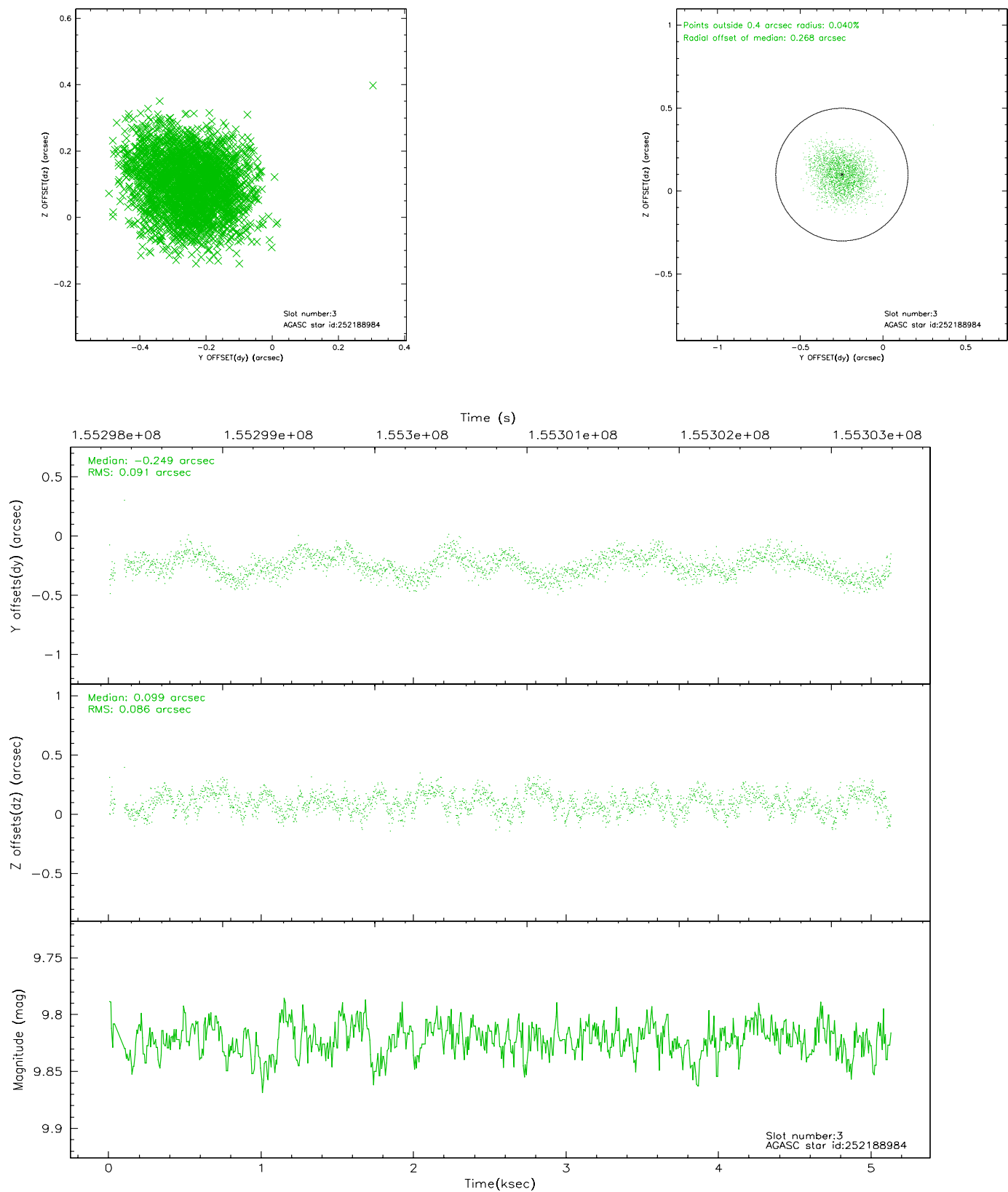


Slot Statistics

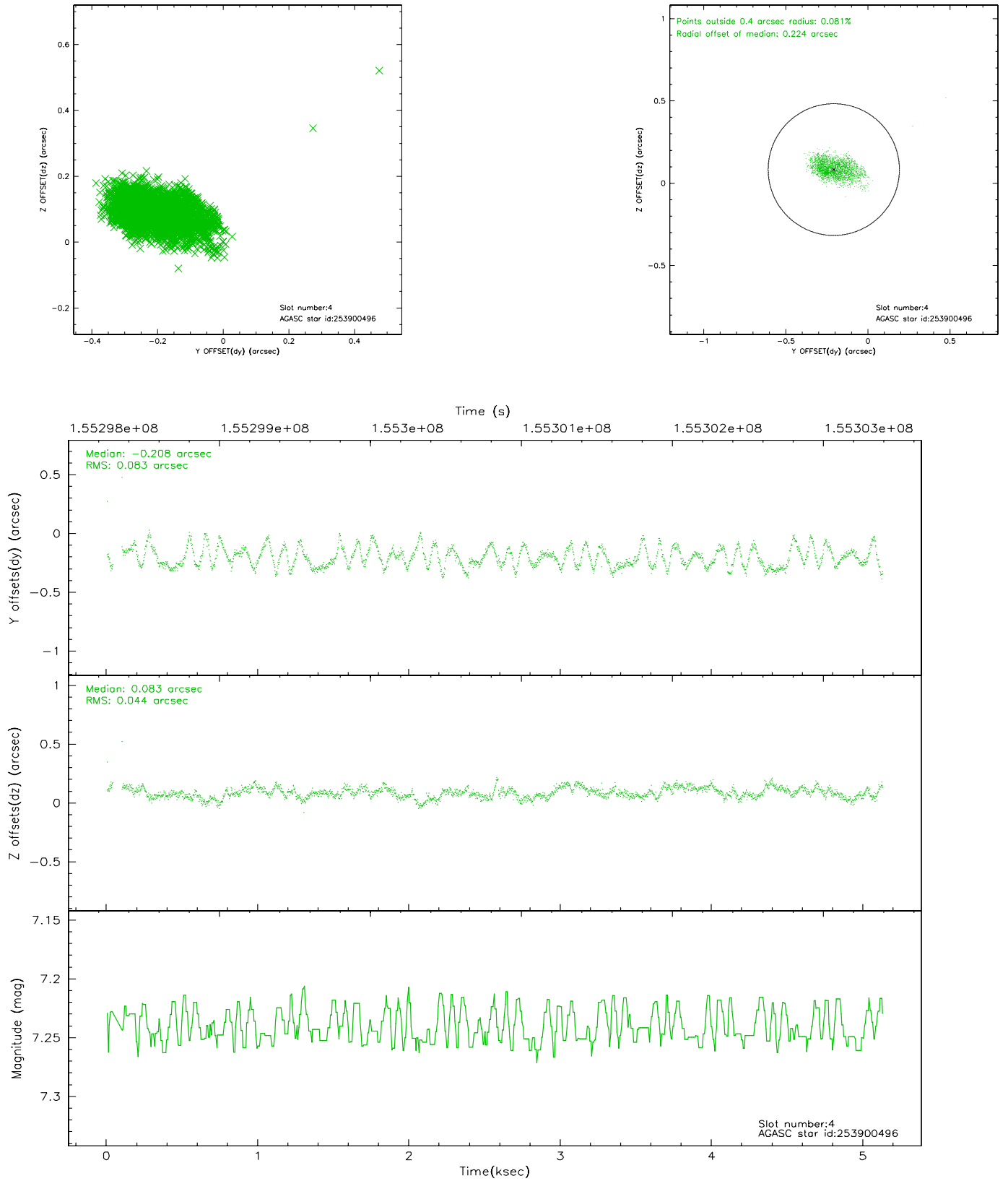
slot	status	id	mag	n_pts	med_dy	med_dz	dr1	dr2	ra	dec	mean_y	mean_z
0	FID	ACIS-S-2	7.11	1237	-0.015	0.016	0.008	0.013	0.000000	0.000000	-755.37	-1730.12
1	FID	ACIS-S-4	7.20	1237	-0.049	0.003	0.007	0.012	0.000000	0.000000	2157.33	177.11
2	FID	ACIS-S-5	7.24	1237	0.033	-0.010	0.007	0.011	0.000000	0.000000	-1806.62	172.13
3	GUIDE	252188984	9.82	2472	-0.249	0.099	0.136	0.209	117.095288	28.210605	2120.35	-762.25
4	GUIDE	253900496	7.24	2473	-0.208	0.083	0.097	0.163	117.487585	28.198754	2161.71	-2007.30
5	GUIDE	251663200	9.49	2472	0.194	-0.337	0.129	0.202	116.038030	27.140912	-1927.28	2367.08
6	GUIDE	251658496	9.59	2471	0.265	0.157	0.116	0.183	117.187544	26.962864	-2342.99	-1348.85
7	MONITOR		0.00	0	0.000	0.000	0.000	0.000	0.000000	0.000000	0.00	0.00

2.4 Star Slots

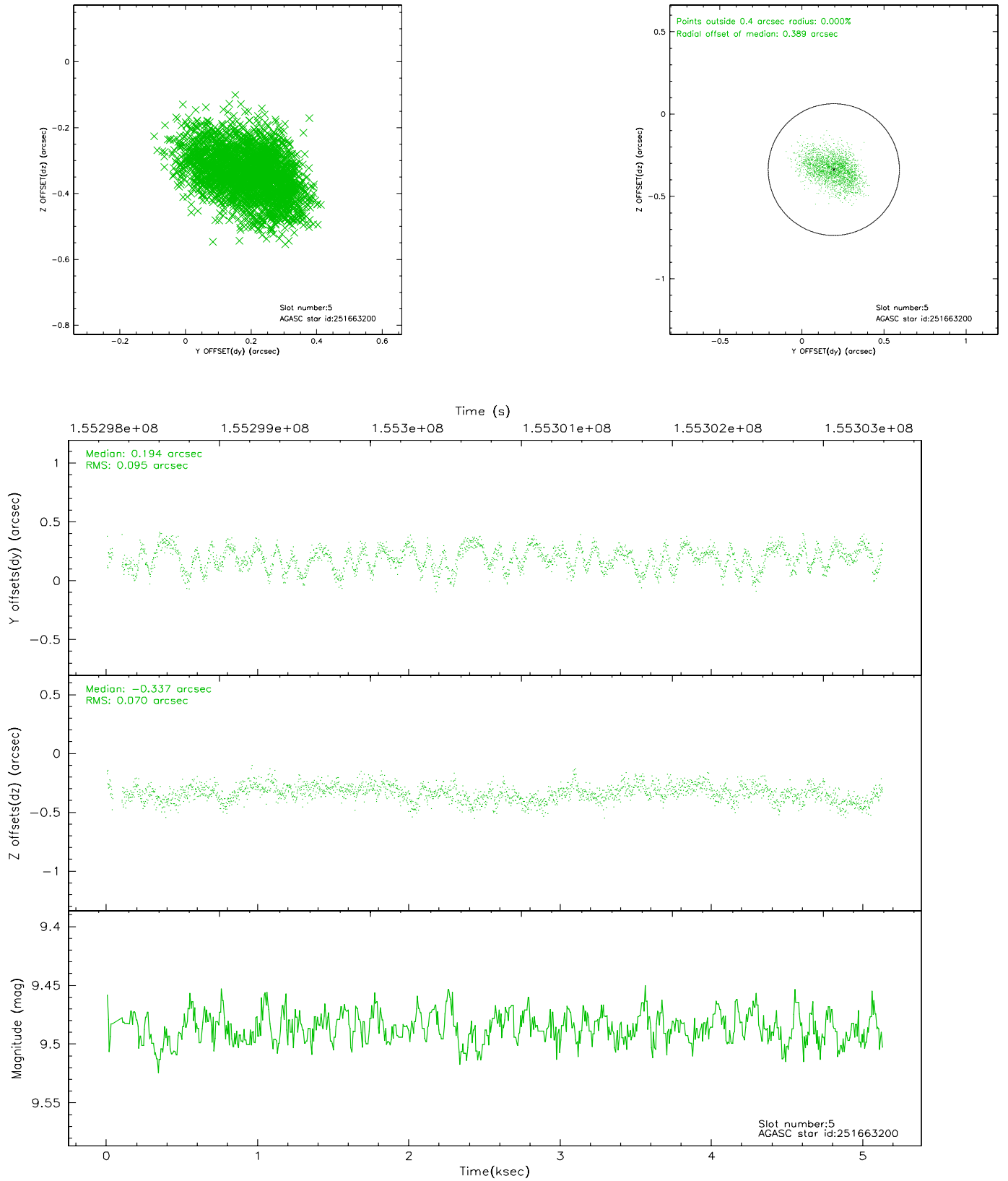
2.4.1 Slot 3



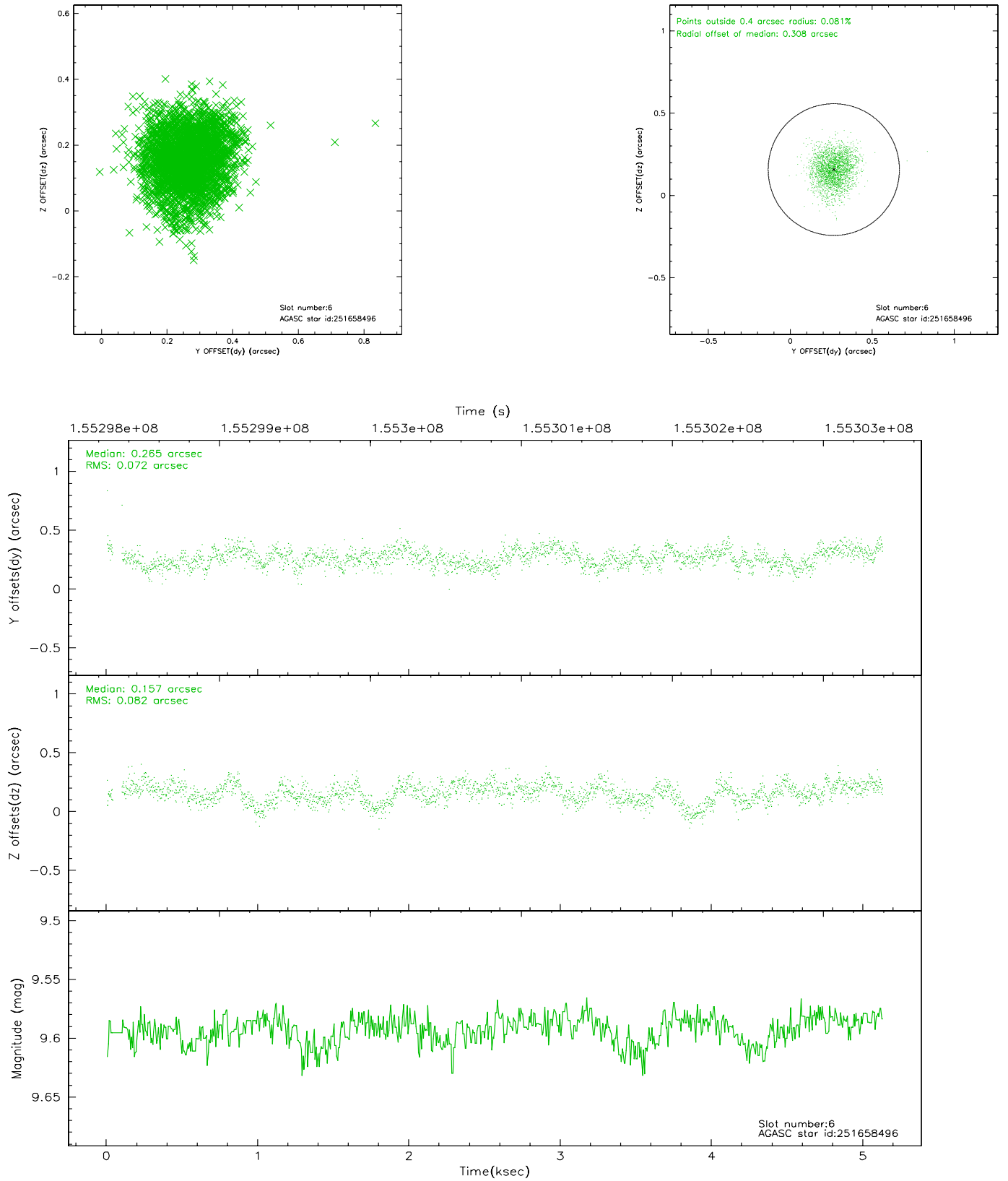
2.4.2 Slot 4



2.4.3 Slot 5

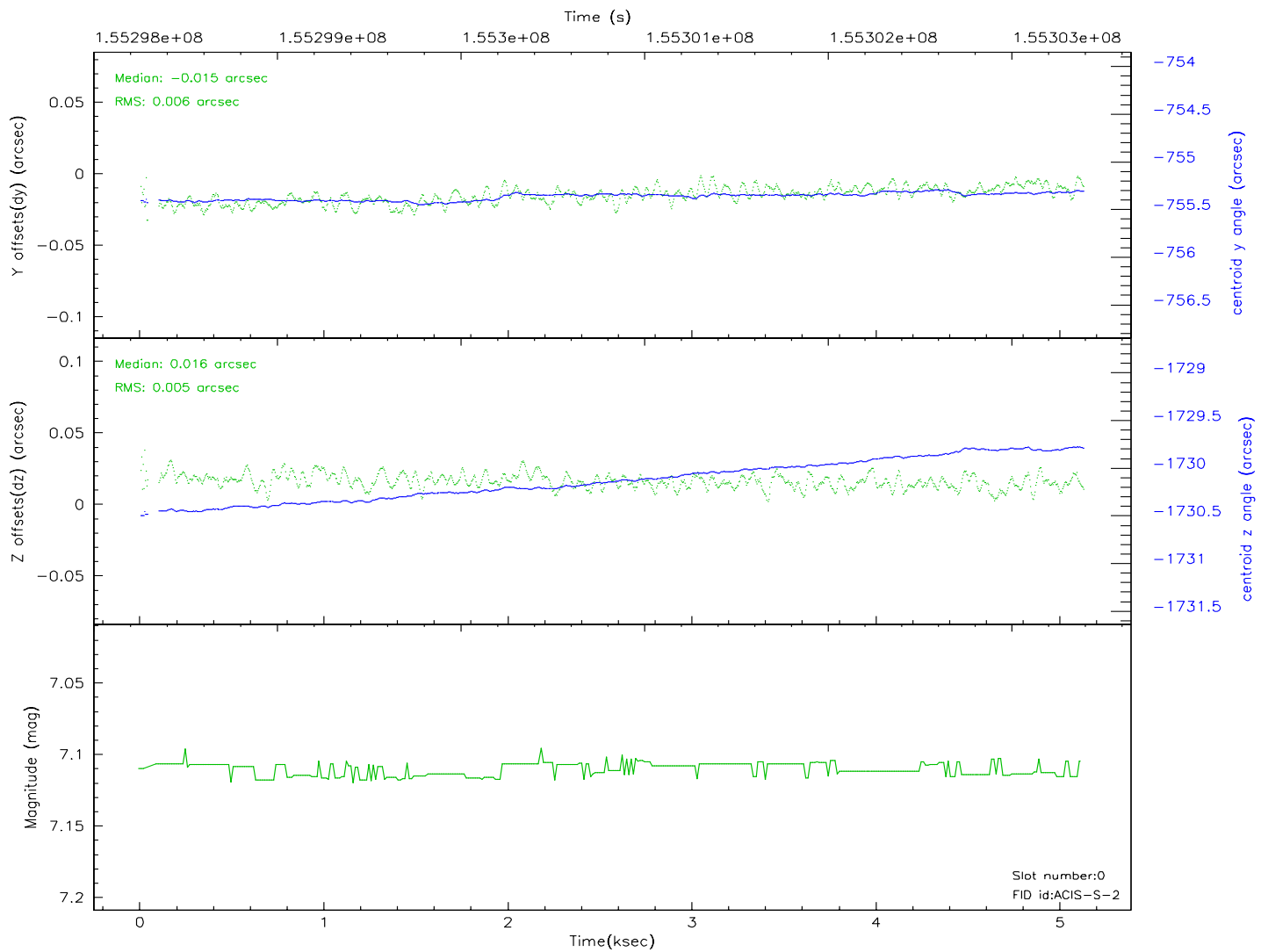
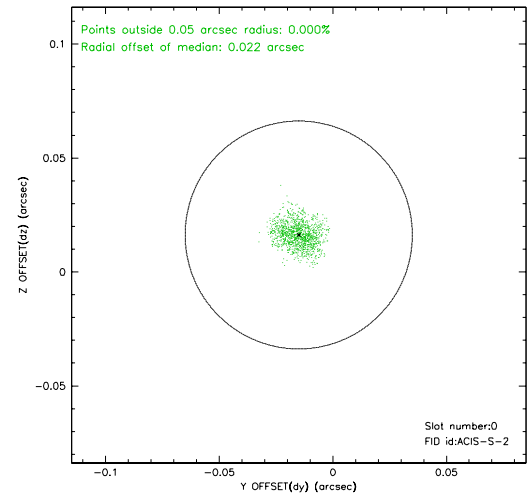
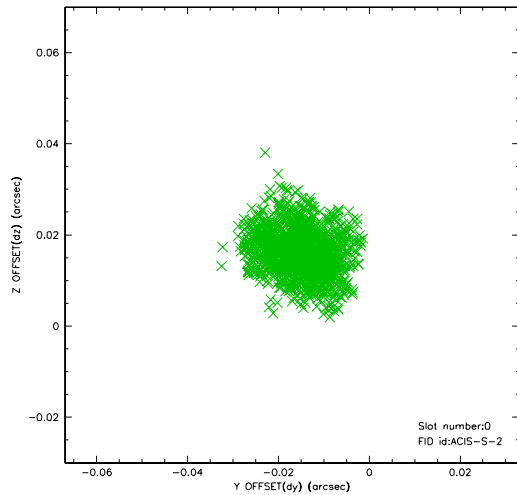


2.4.4 Slot 6

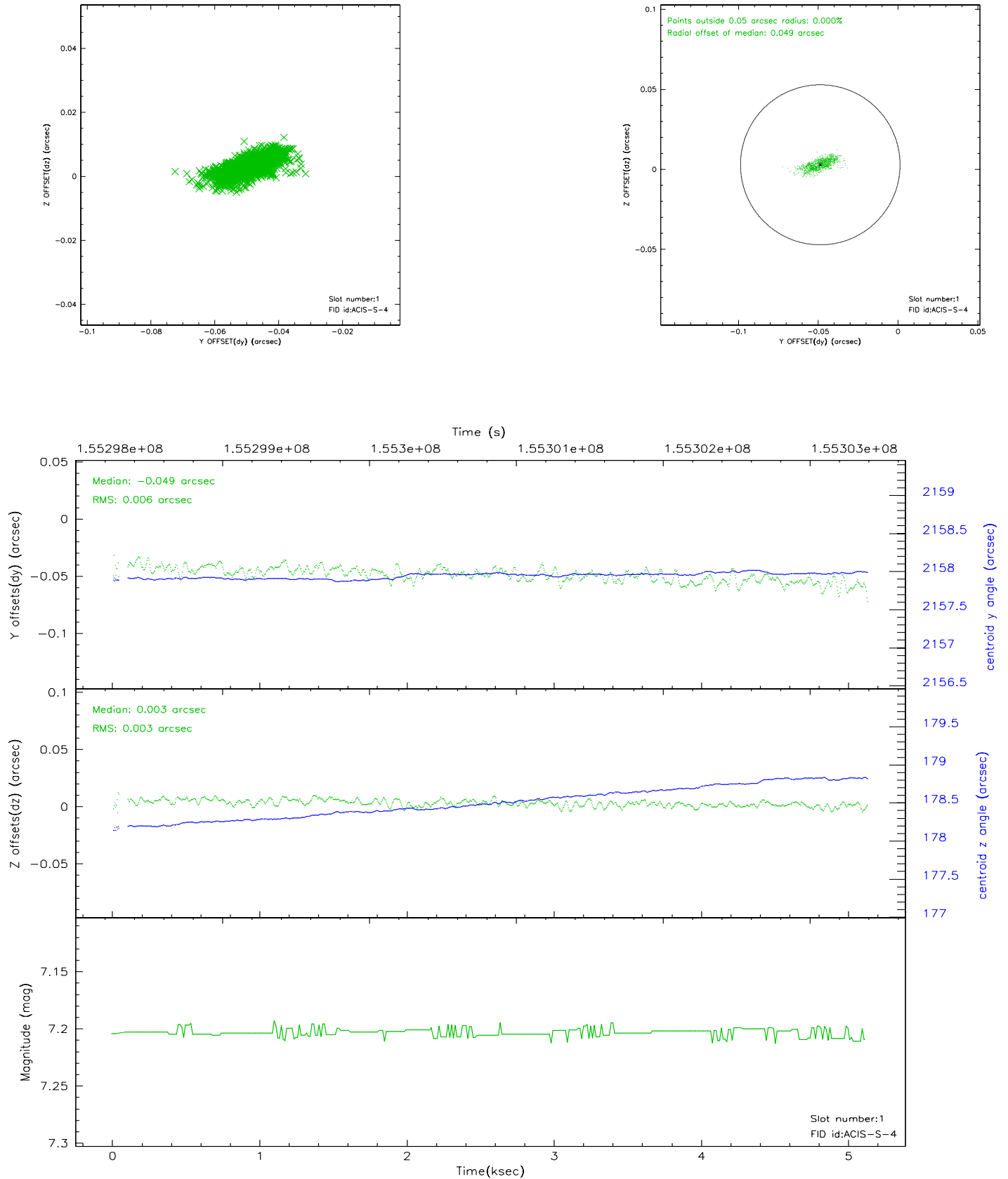


2.5 FID Slots

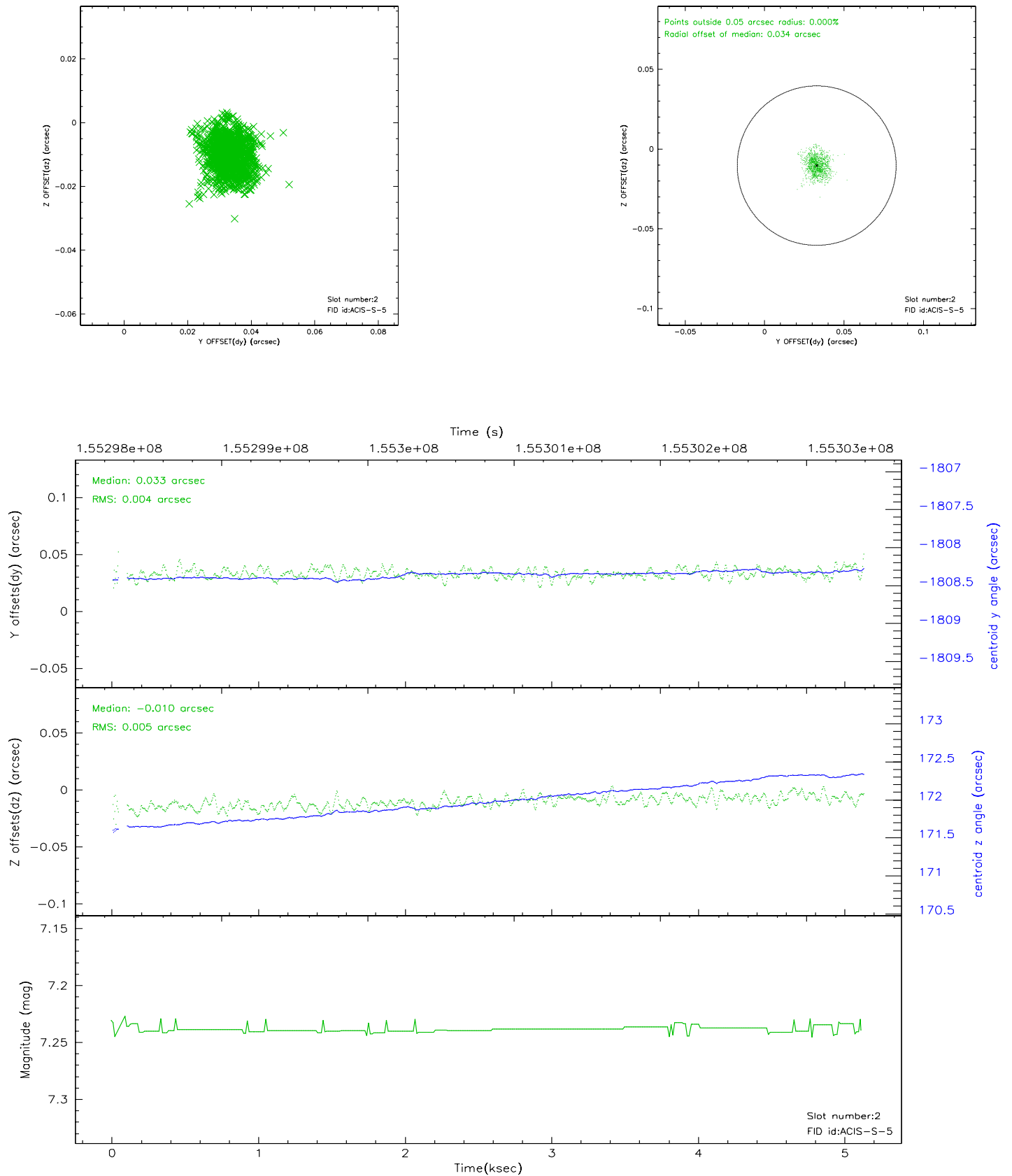
2.5.1 Slot 0



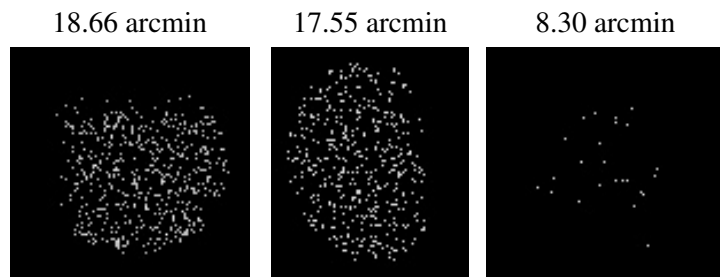
2.5.2 Slot 1



2.5.3 Slot 2



3 Point Sources



A Summary

A.1 Status

V&V Scientist	Beth Sundheim
V&V Date (YYYY-MM-DD)	2006.10.13
V&V Edition	1
V&V Disposition and Status	OK
V&V Charge Time	5.023

A.2 Comments