

V&V Reference Report

L2 ASCDS Version : 7.6.8.1

Observation 3471 - L2 Version 001
Chandra X-Ray Center

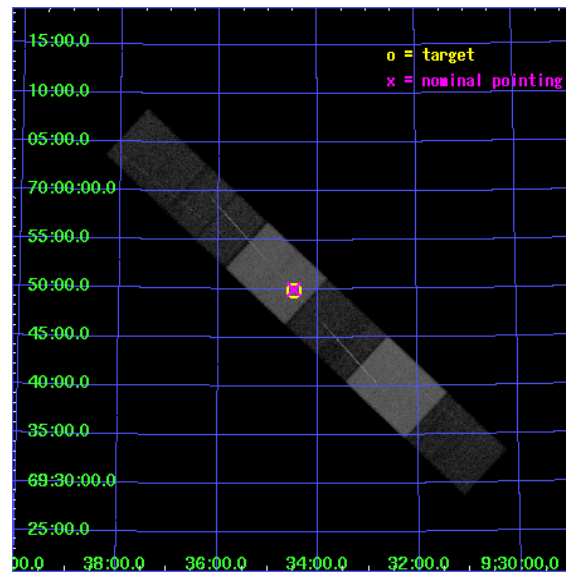
L2 Processing Date : Sep 9 2006

Contents

1	Front	2
2	OBI	3
2.1	OBI	3
2.1.1	Images	3
2.1.2	Bias	3
2.1.3	Parameters	4
2.1.4	Events	4
2.2	Compared Parameters	5
2.3	Aspect	6
2.4	Star Slots	9
2.4.1	Slot 3	9
2.4.2	Slot 4	10
2.4.3	Slot 5	11
2.4.4	Slot 6	12
2.4.5	Slot 7	13
2.5	FID Slots	14
2.5.1	Slot 0	14
2.5.2	Slot 1	15
2.5.3	Slot 2	16
3	Gratings	17
3.1	HEG Arm	17
3.2	MEG Arm	19
A	Summary	21
A.1	Status	21
A.2	Comments	21

1 Front

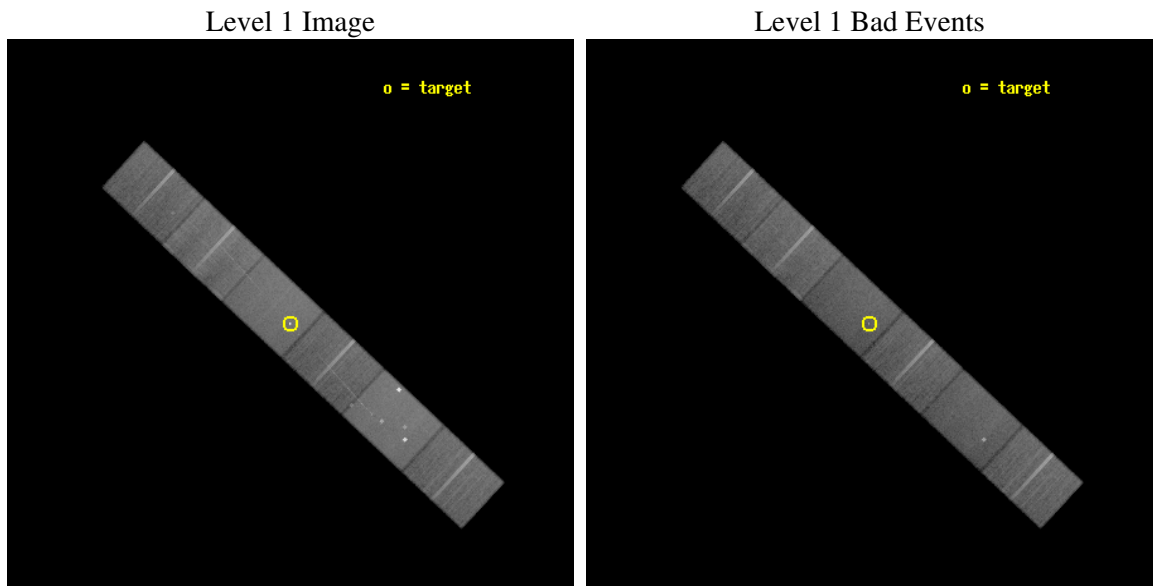
seq_num	200172
obs_id	3471
title	A TALE OF TWO G STARS
observer	Dr. Thomas Ayres
object	24 URSAE MAJORIS
dtcycle	0
cycle	P
ra_targ	143.62
dec_targ	69.830278
ra_nom	143.61974716139
dec_nom	69.832487315239
roll_nom	223.05686139373
revision	2
ontime	45254.959039748
livetime	44524.052198851
ontime4	45254.959039748
ontime5	45257.5
ontime6	45257.5
ontime7	45254.959039748
ontime8	45257.5
ontime9	45257.5
l2events	335113



2 OBI

2.1 OBI

2.1.1 Images

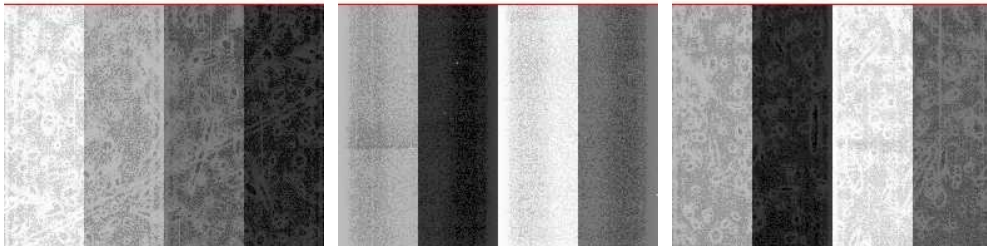


2.1.2 Bias

Chip 4

Chip 5

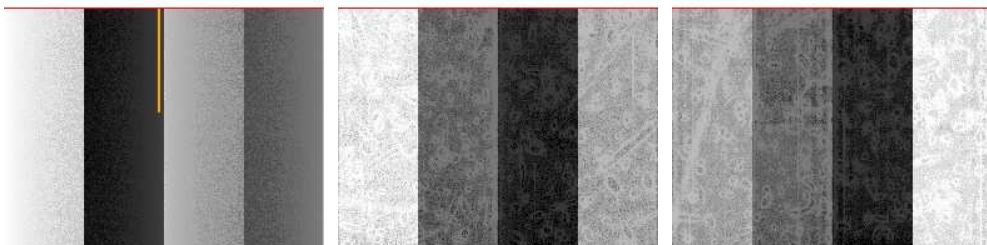
Chip 6



Chip 7

Chip 8

Chip 9



2.1.3 Parameters

obi_num	0
ascdsver	7.6.8.1
caldsver	3.2.3
date	2006-09-09T11:23:30
revision	2

sched_exp_time	45500.000000
ontime	45257.91129522
ontime4	45257.91129522
ontime5	45260.452255473
ontime6	45260.452255473
ontime7	45257.91129522
ontime8	45260.452275395
ontime9	45260.452255473
l1events	1584270

2.1.4 Events

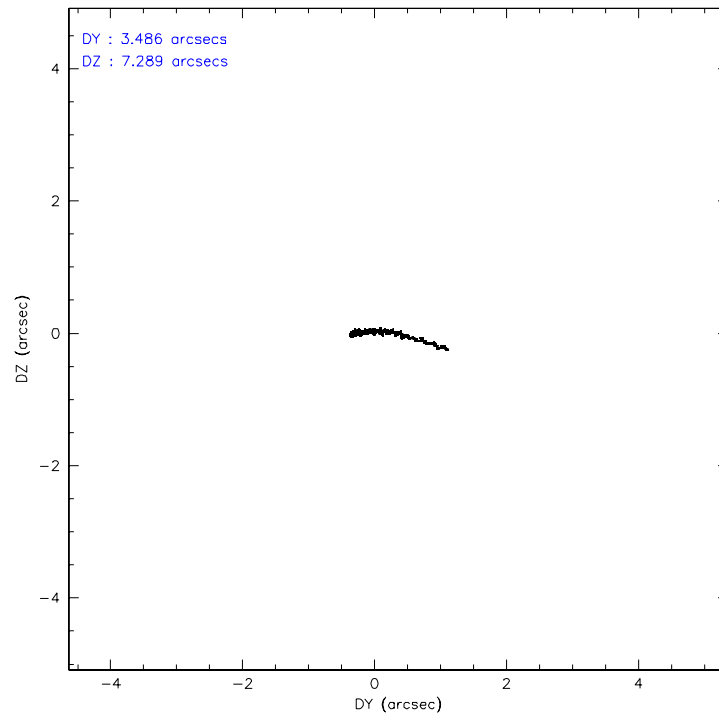
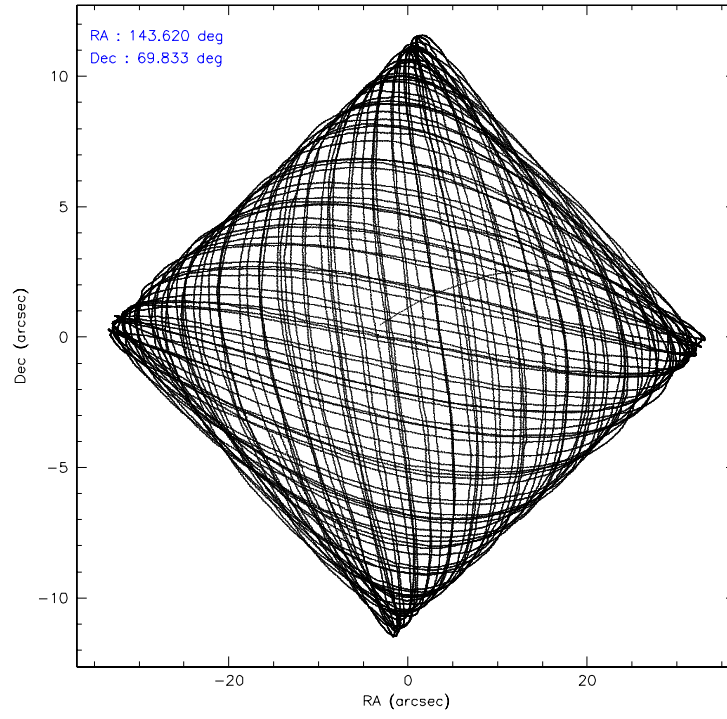
	ccd 4	ccd 5	ccd 6	ccd 7	ccd 8	ccd 9
level 1 events	244599	330054	222084	285932	286206	215395
rejected events	217657	173054	195320	170755	227135	188729
rejected %	88%	52%	87%	59%	79%	87%

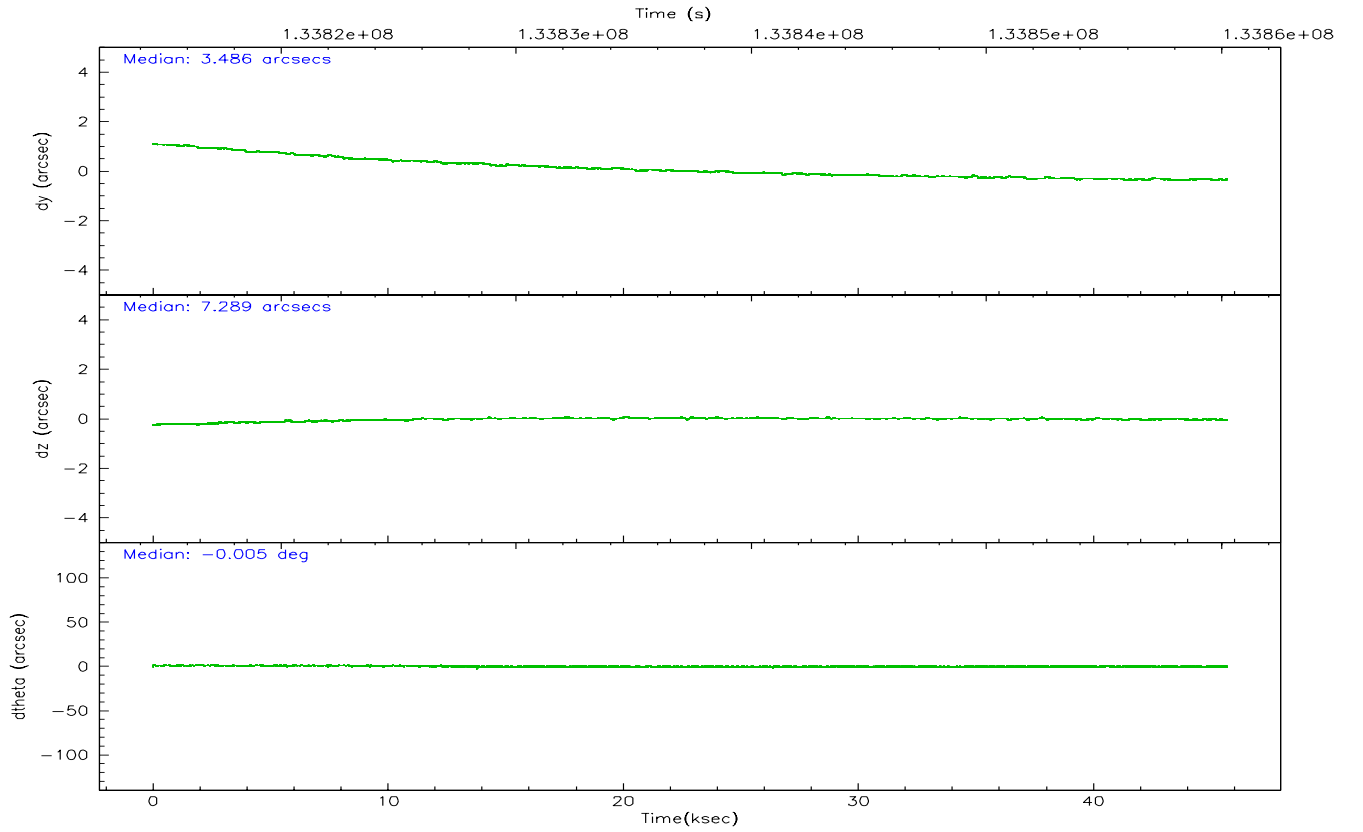
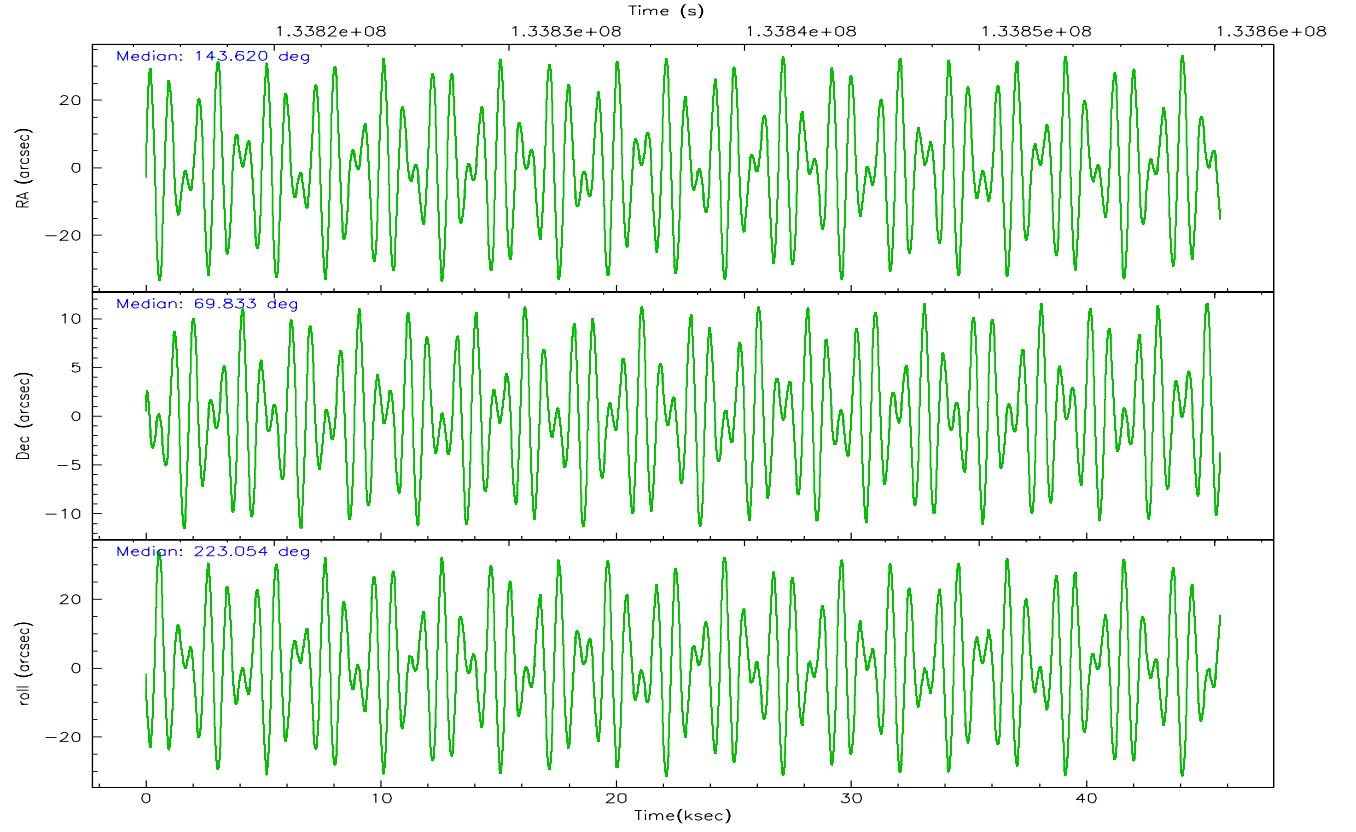
	ccd 4	ccd 5	ccd 6	ccd 7	ccd 8	ccd 9
grade 0 events	10809	30436	11005	8333	18982	10878
	4%	9%	4%	2%	6%	5%
grade 1 events	89	2238	91	222	162	76
	0%	0%	0%	0%	0%	0%
grade 2 events	6301	41845	5288	28068	12399	5303
	2%	12%	2%	9%	4%	2%
grade 3 events	2627	3785	2720	7434	6241	2844
	1%	1%	1%	2%	2%	1%
grade 4 events	2538	3701	2738	7112	5831	2633
	1%	1%	1%	2%	2%	1%
grade 5 events	7900	15631	9270	20493	11888	9647
	3%	4%	4%	7%	4%	4%
grade 6 events	4669	77251	5015	64247	15619	5014
	1%	23%	2%	22%	5%	2%
grade 7 events	209666	155167	185957	150023	215084	179000
	85%	47%	83%	52%	75%	83%

2.2 Compared Parameters

Parameter	Planned	Actual	Parameter	Planned	Actual
Instrument	ACIS	ACIS	Obspar format version number	6	6
Detector	ACIS-456789	ACIS-456789	Obspar file type	PREDICTED	ACTUAL
Grating	HETG	HETG	Obspar update status	NONE	UPDATED
Data mode	FAINT	FAINT	On-chip summing requested	N	N
Observation mode	POINTING	POINTING	Subarray requested	CUSTOM	CUSTOM
Pointing RA	143.641831	143.6197471613881	Subarray start row	1	1
Pointing Dec	69.858654	69.83248731523919	Subarray row count	774	774
Pointing Roll	222.879507	223.0568613937279	Alternating exposures requested	N	N
SIM focus pos (mm)	-0.684267	-0.6828225247311905	Primary exposure time	0.000000	2.5
SIM defocus (mm)	0	0.001444936568705701			
SIM translation stage pos (mm)	-187.132523	-187.1254020033014			
SIM translation stage offset (mm)	-3	-3.007120579706367			
Observation start time	133814744.184000	133814023.88044			
Observation start date	2002-03-29T18:44:40	2002-03-29T18:33:43			
Observation end time	133860244.184000	133861013.98234			
Observation end date	2002-03-30T07:23:00	2002-03-30T07:36:53			
Read mode	TIMED	TIMED			

2.3 Aspect



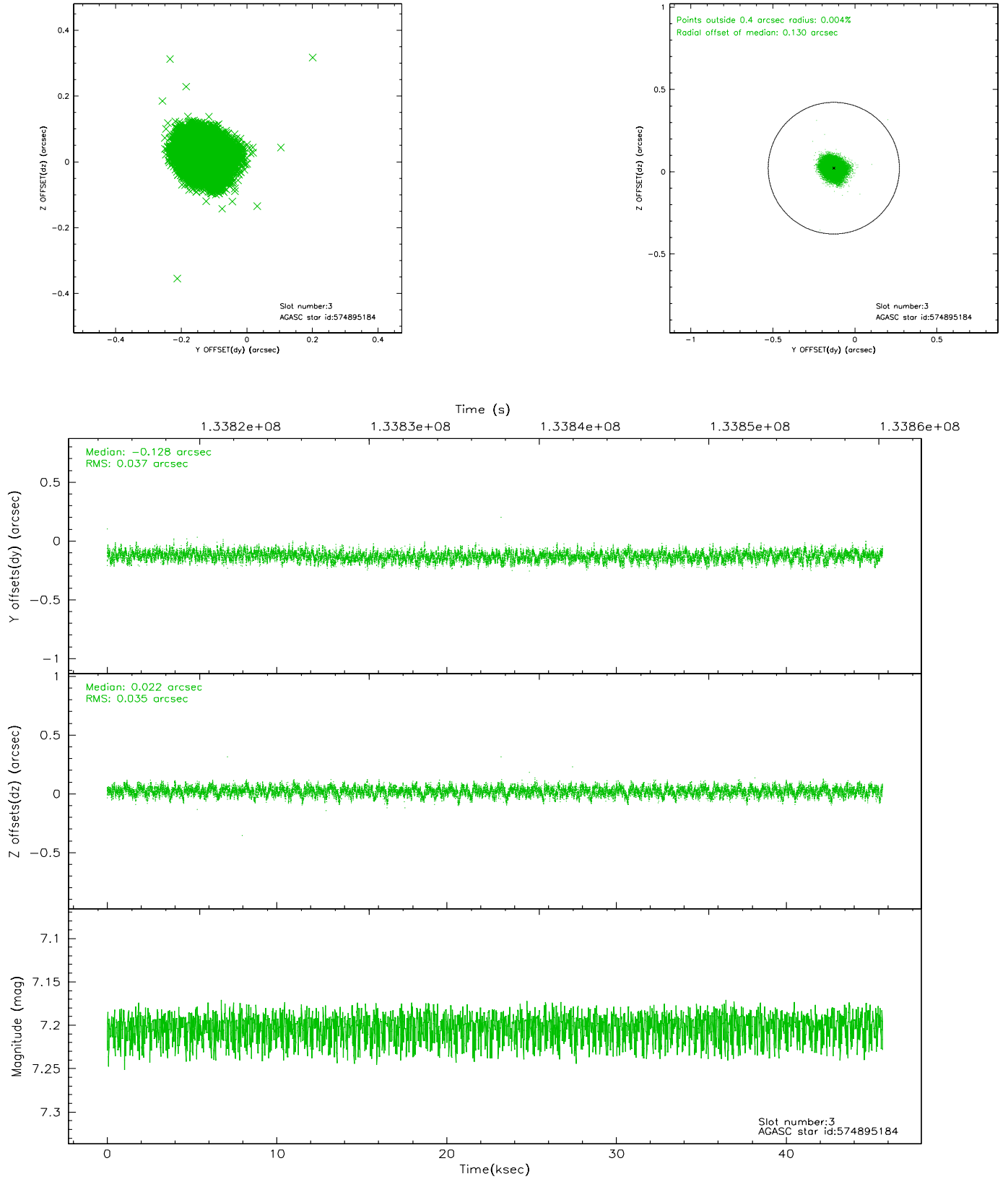


Slot Statistics

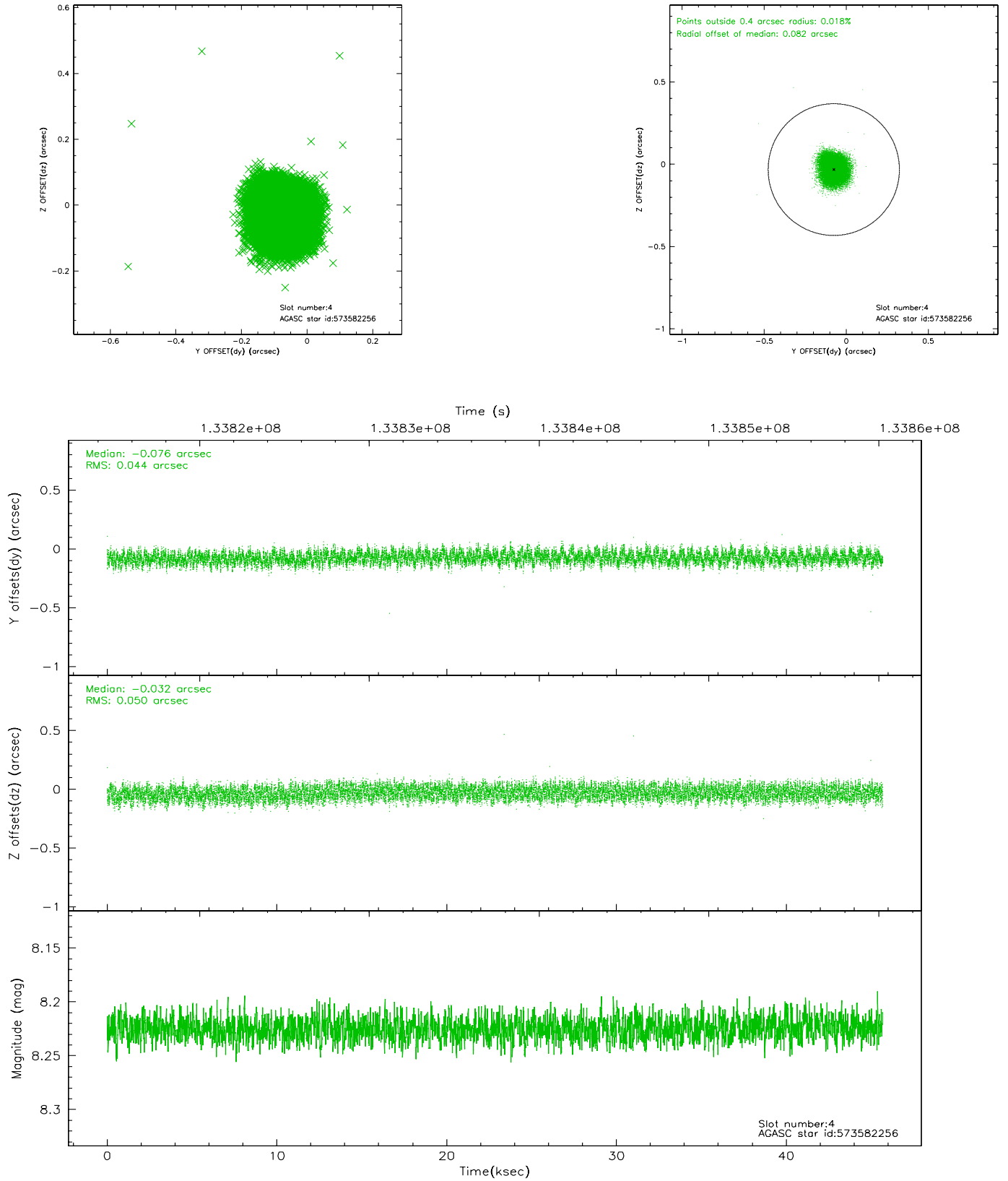
slot	status	id	mag	n_pts	med_dy	med_dz	dr1	dr2	ra	dec	mean_y	mean_z
0	FID	ACIS-S-2	7.10	11141	-0.040	-0.020	0.008	0.013	0.000000	0.000000	-756.07	-1790.55
1	FID	ACIS-S-4	7.20	11140	-0.004	0.025	0.011	0.018	0.000000	0.000000	2157.22	118.01
2	FID	ACIS-S-5	7.23	11142	0.012	0.004	0.011	0.018	0.000000	0.000000	-1808.89	111.60
3	GUIDE	574895184	7.20	22285	-0.128	0.022	0.055	0.087	144.571194	70.266109	-1831.01	-312.81
4	GUIDE	573582256	8.22	22278	-0.076	-0.032	0.073	0.110	143.901691	69.156997	1475.09	2076.81
5	GUIDE	574896672	9.33	22271	-0.029	0.049	0.073	0.118	144.520516	70.337168	-1956.23	-543.80
6	GUIDE	573583384	9.41	22279	0.097	-0.043	0.118	0.189	142.247635	69.383402	2446.36	36.30
7	GUIDE	573578552	9.47	22274	0.139	0.006	0.117	0.200	141.668881	69.706297	2152.26	-1303.35

2.4 Star Slots

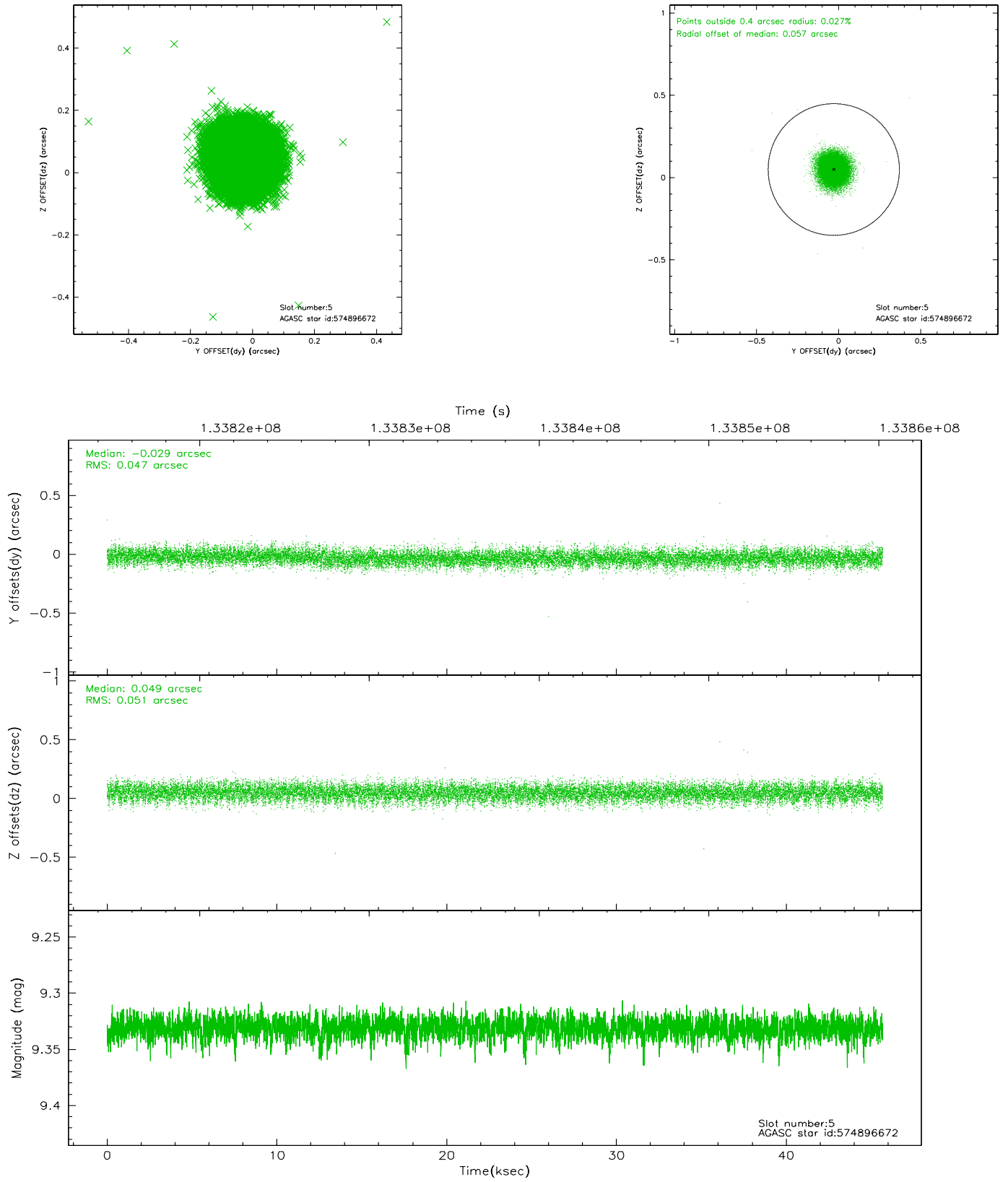
2.4.1 Slot 3



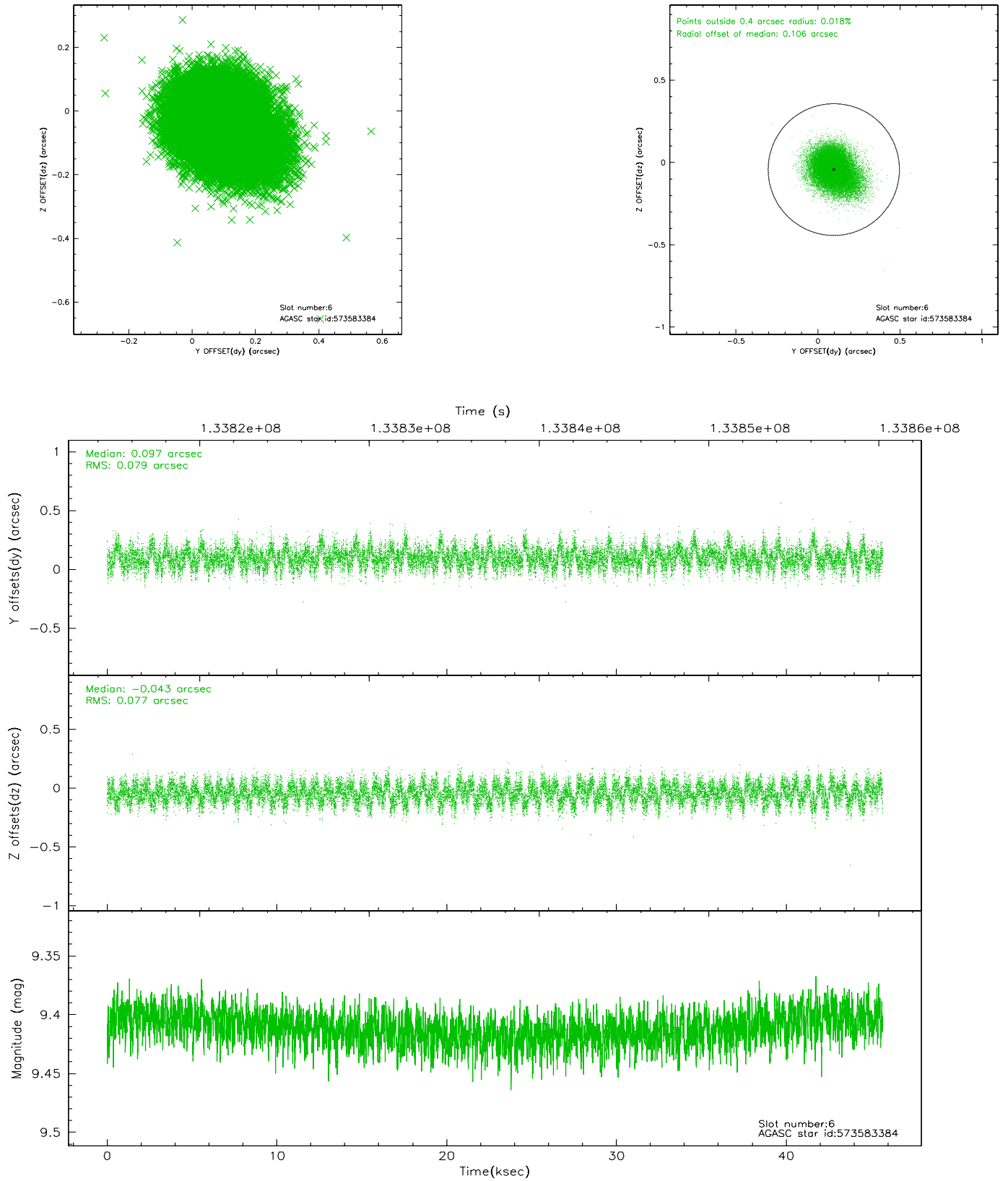
2.4.2 Slot 4



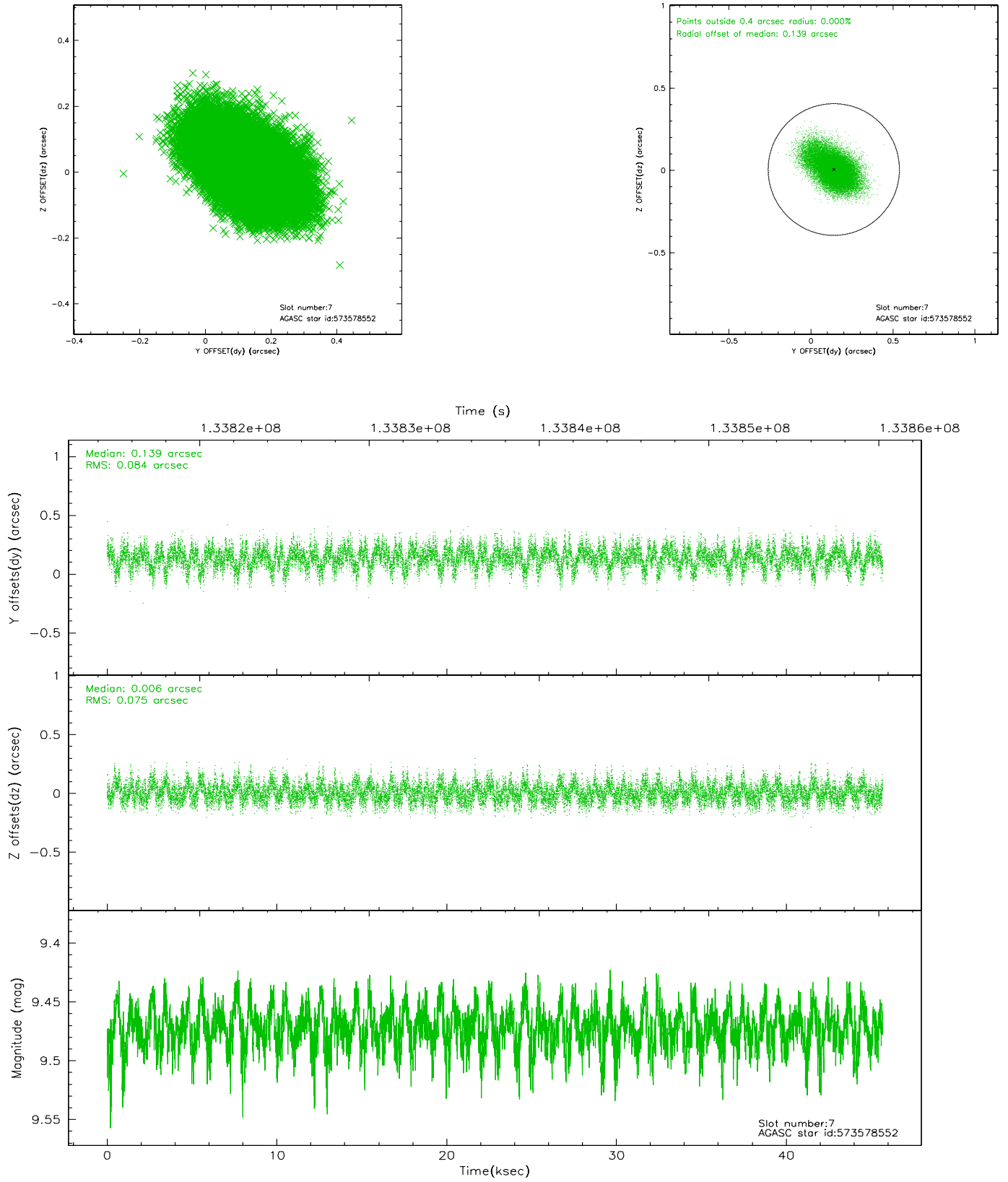
2.4.3 Slot 5



2.4.4 Slot 6

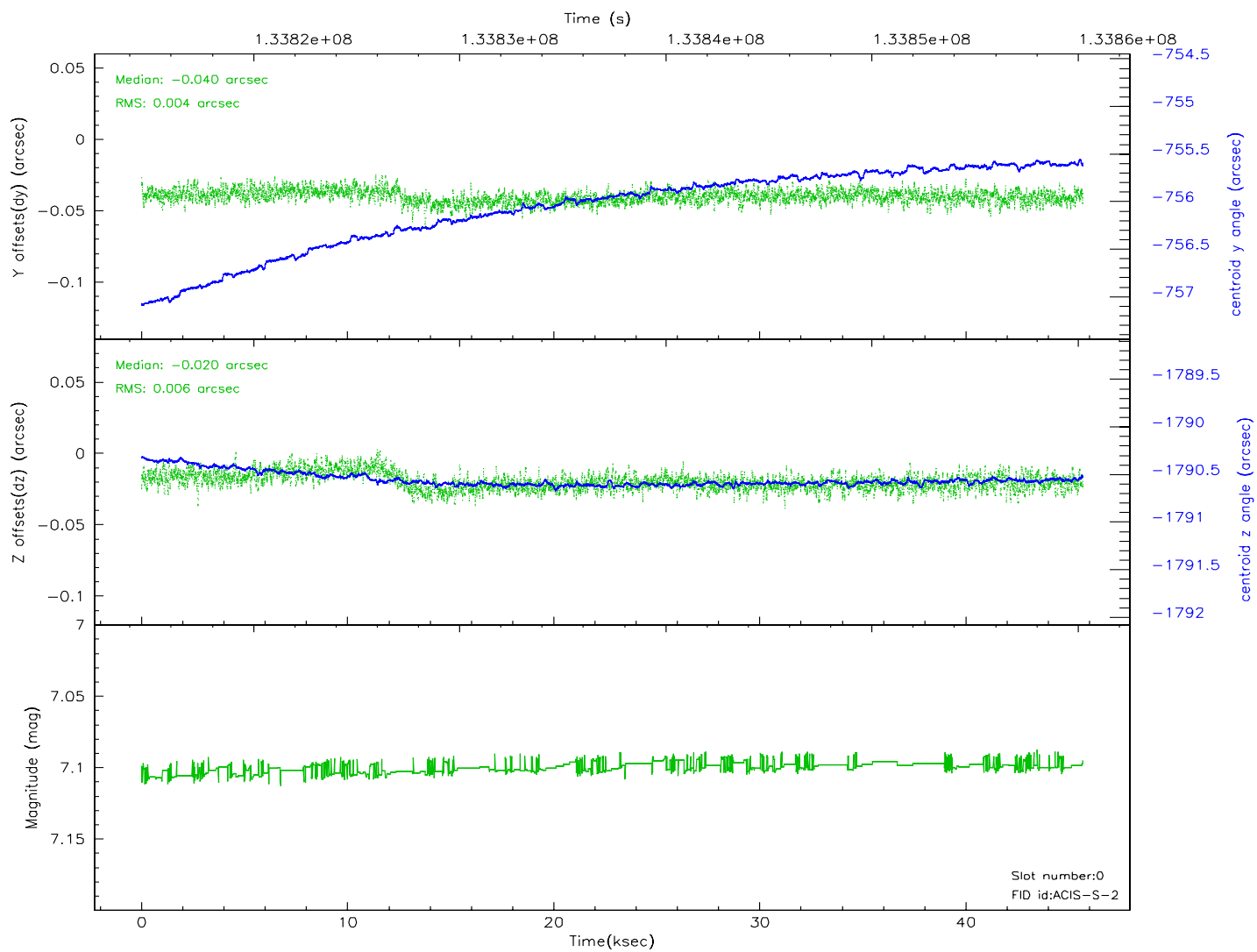
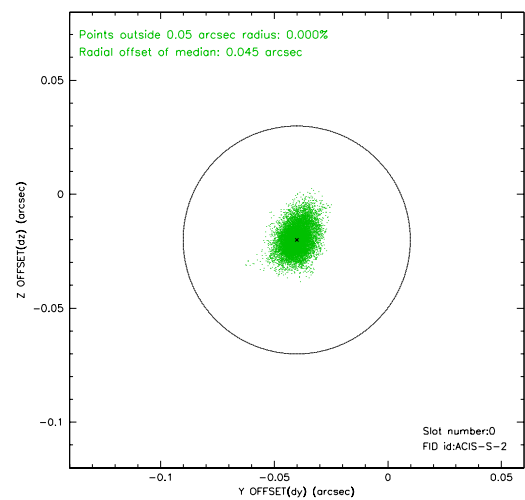
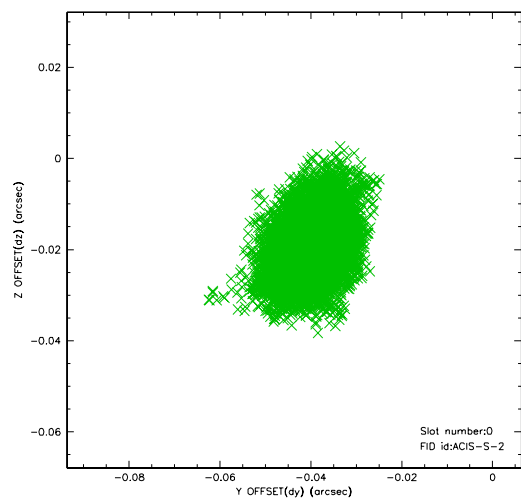


2.4.5 Slot 7

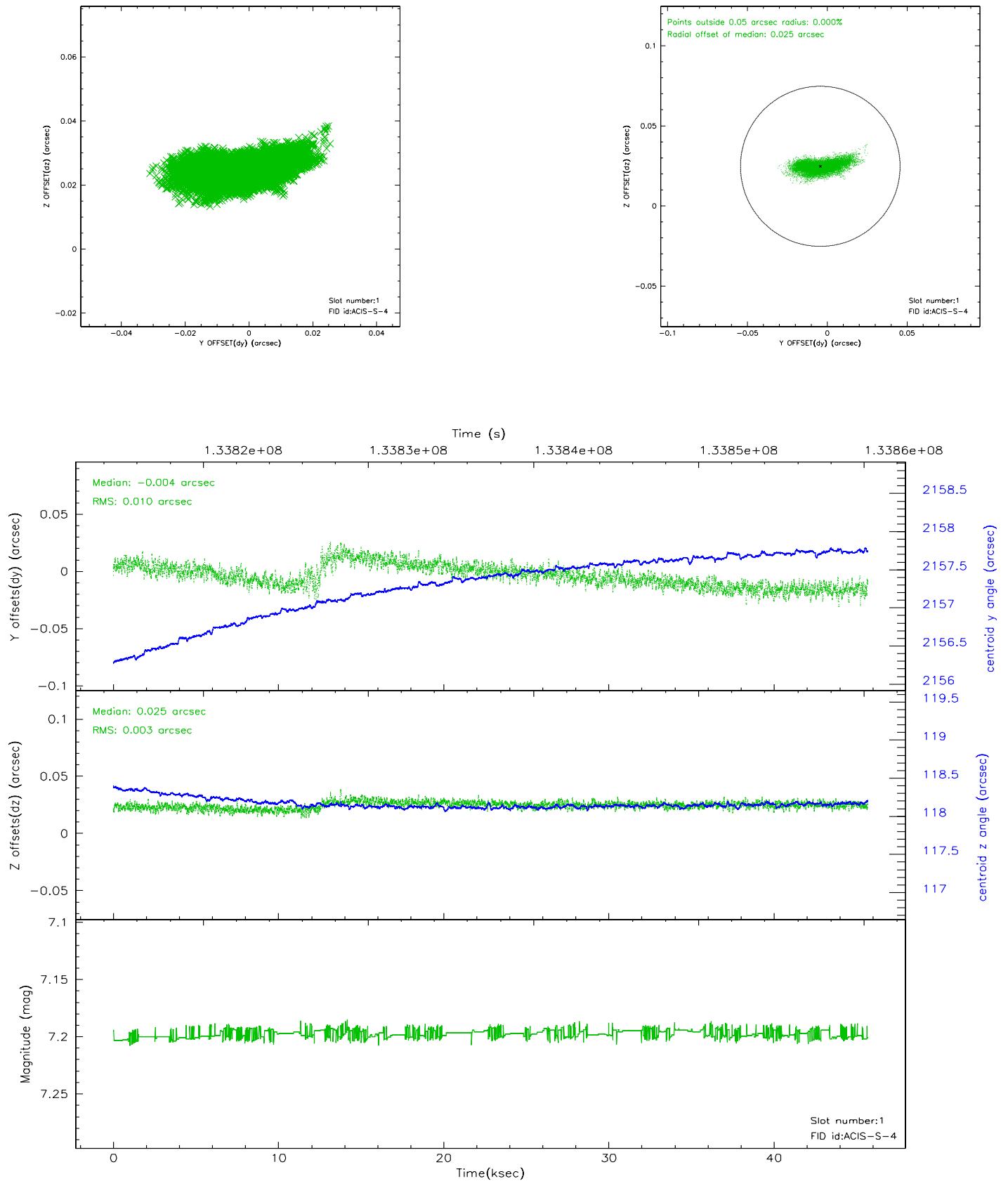


2.5 FID Slots

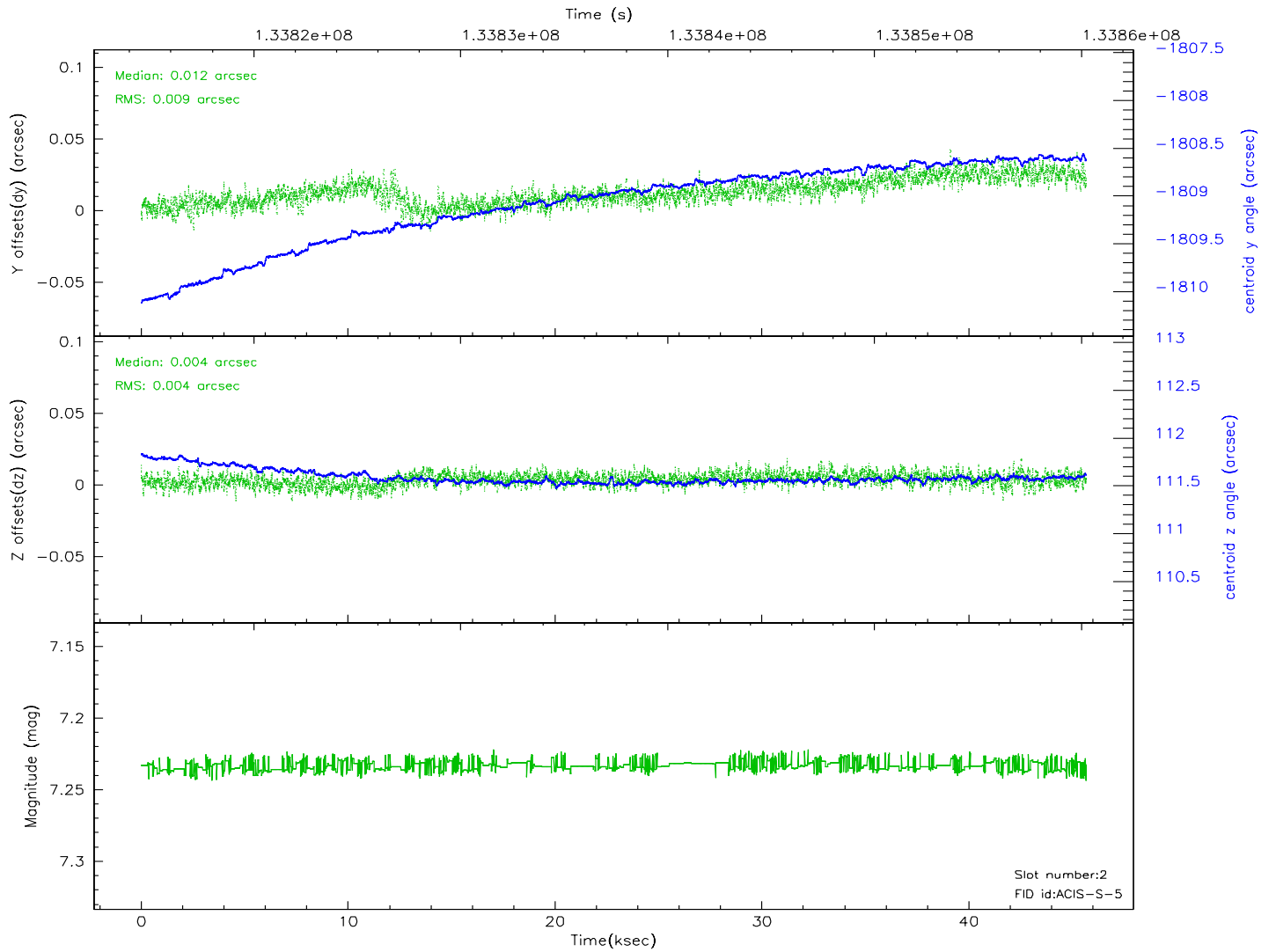
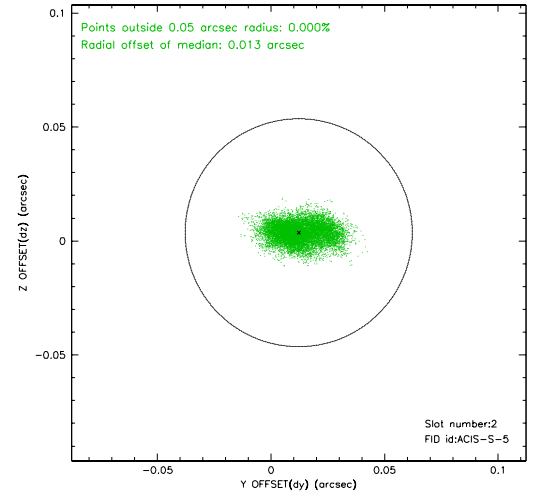
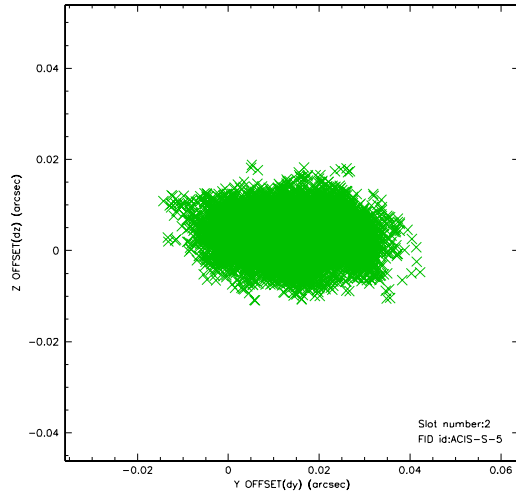
2.5.1 Slot 0



2.5.2 Slot 1



2.5.3 Slot 2

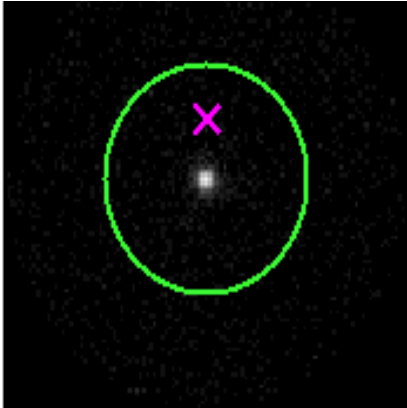


3 Gratings

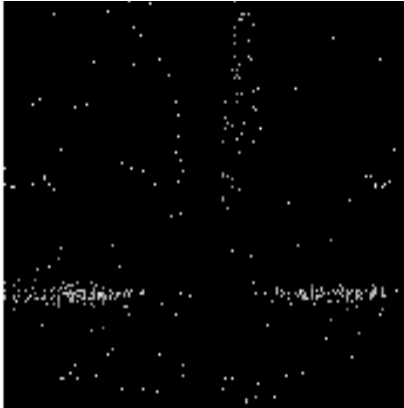
3.1 HEG Arm



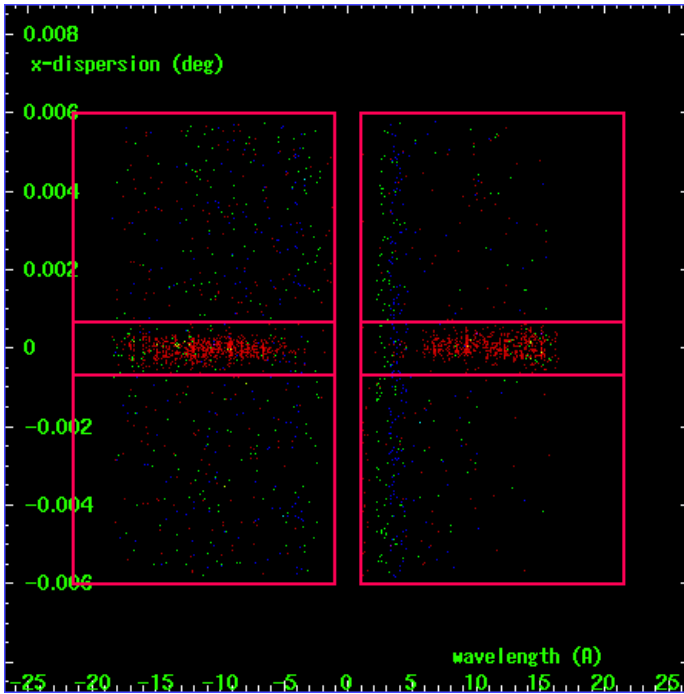
HEG Order Sort 123



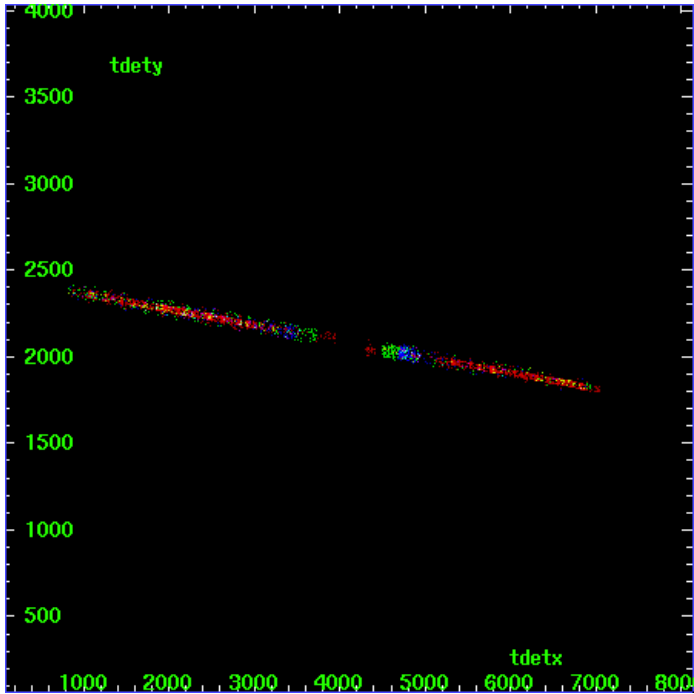
HEG Zero Order



HEG Order Sort ALL

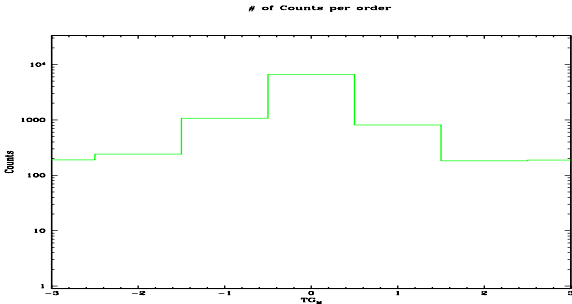


Spot Image HEG

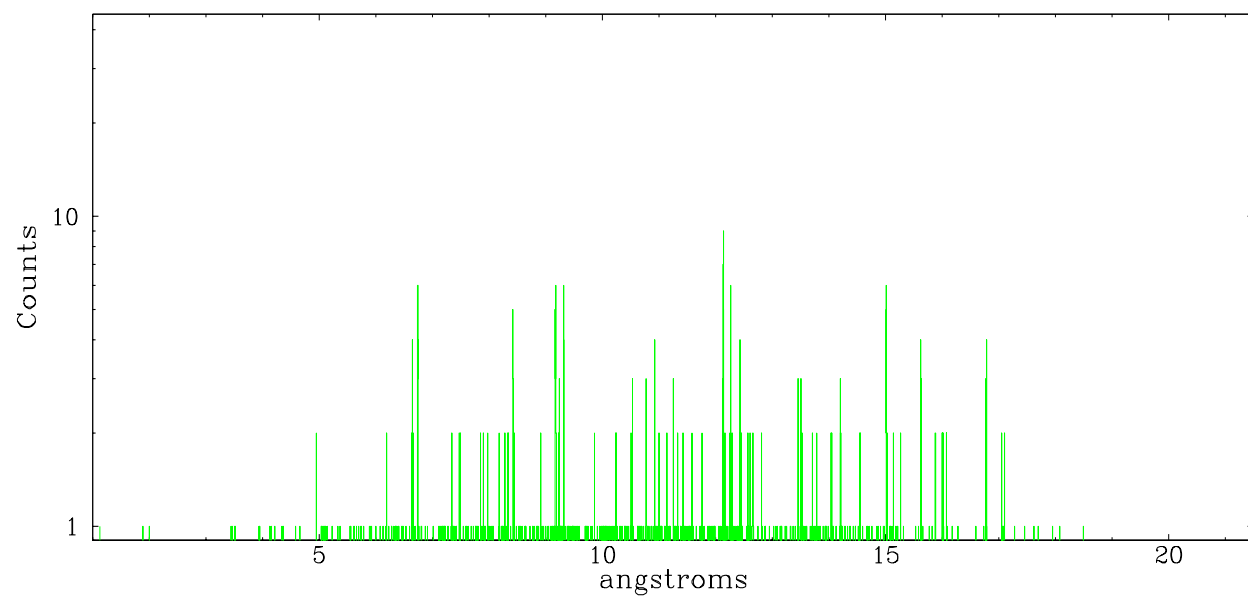


Full Detector HEG

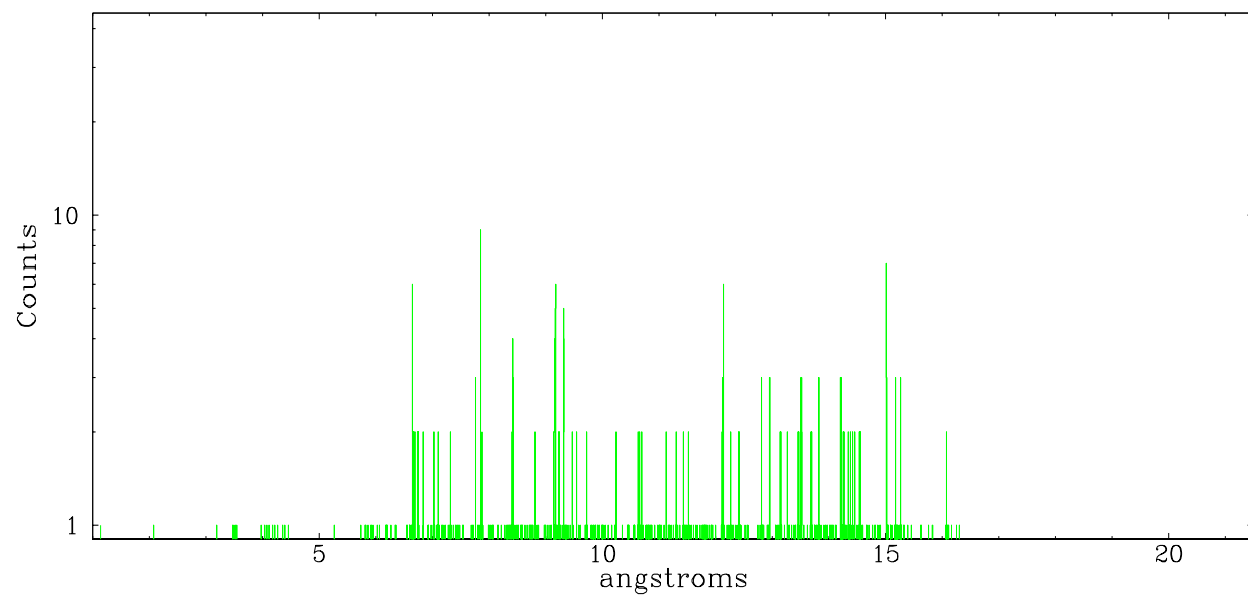
	order -3	order -2	order -1	order 0	order 1	order 2	order 3
Events	190	242	1070	6637	808	182	189



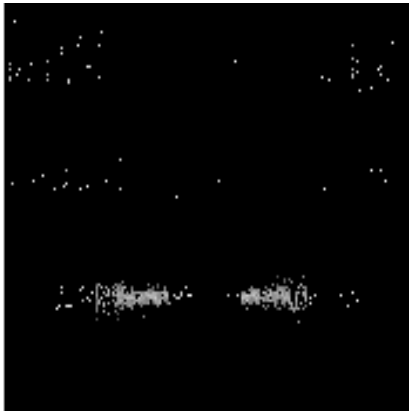
heg order -1



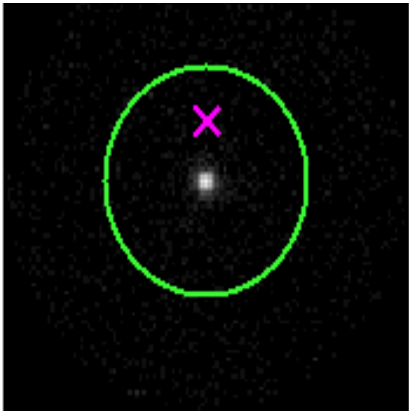
heg order +1



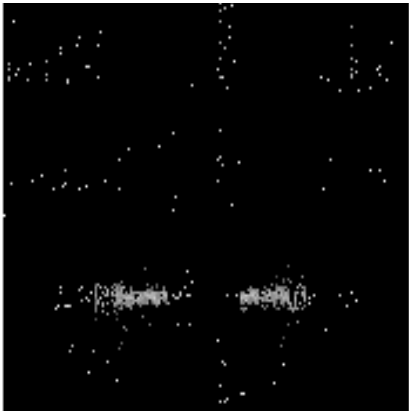
3.2 MEG Arm



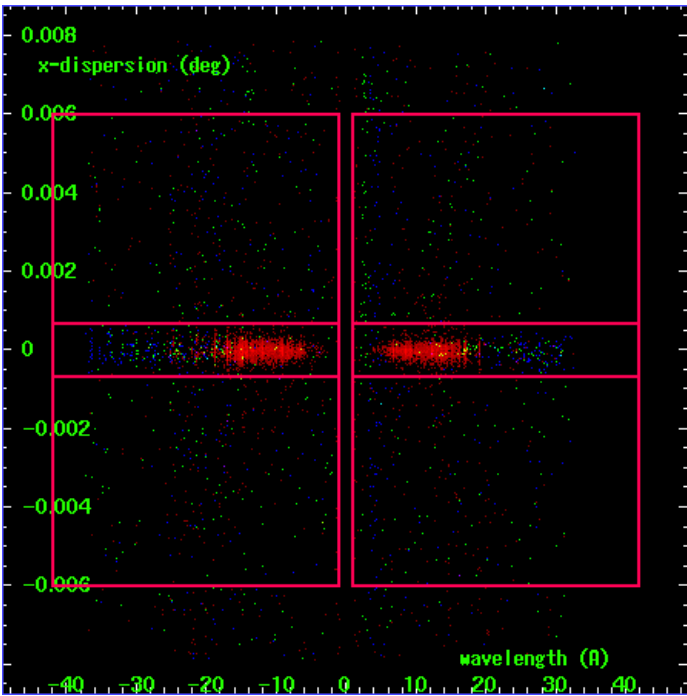
MEG Order Sort 123



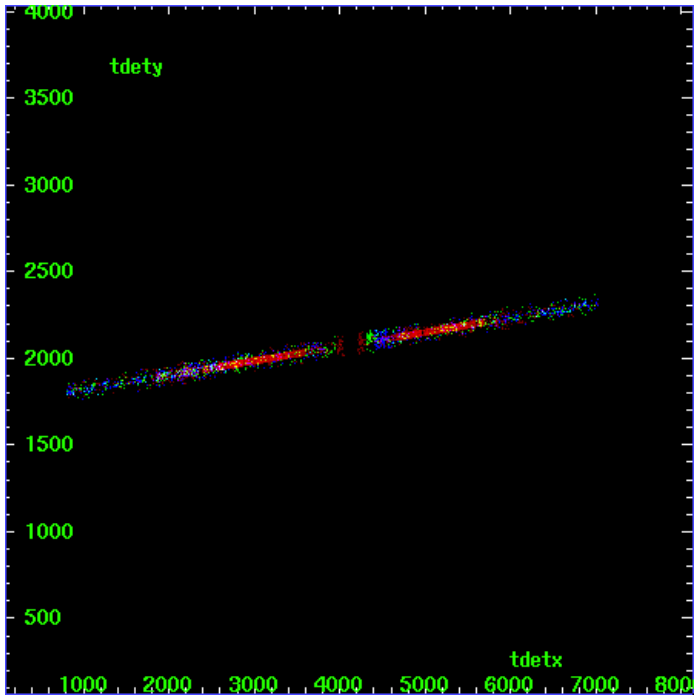
MEG Zero Order



MEG Order Sort ALL

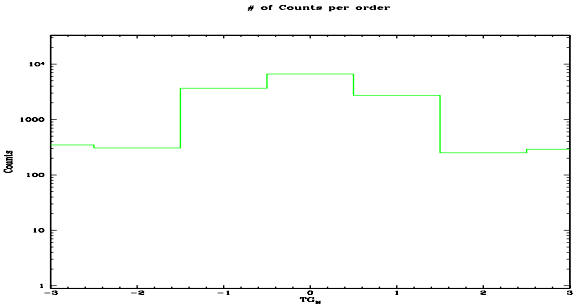


Spot Image MEG

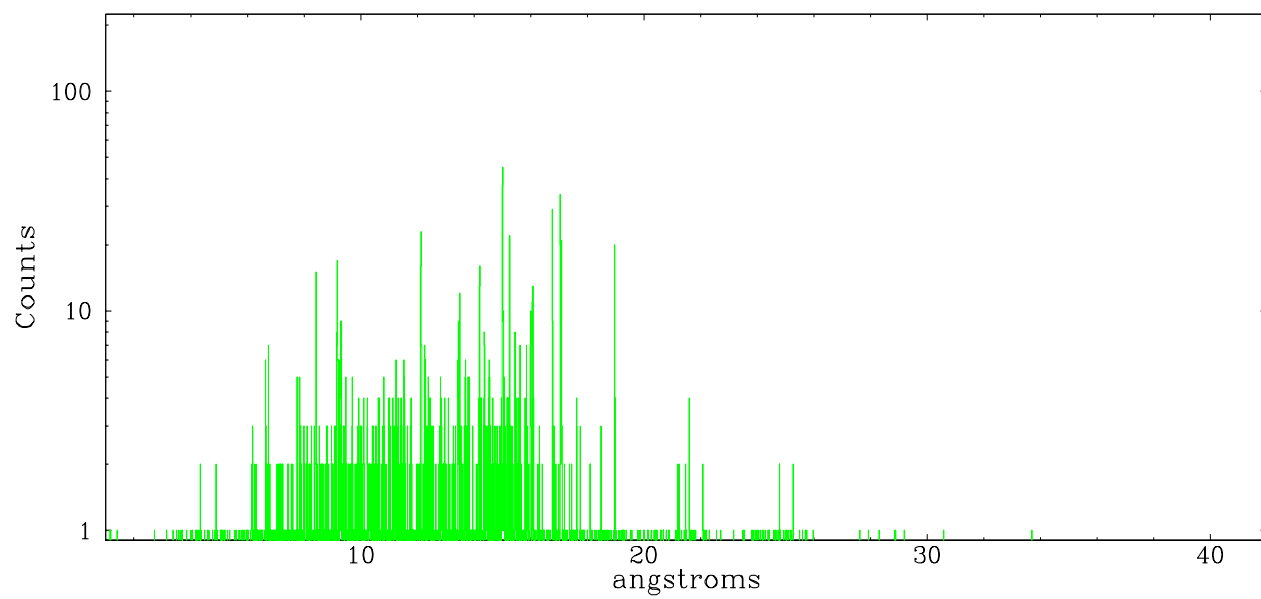


Full Detector MEG

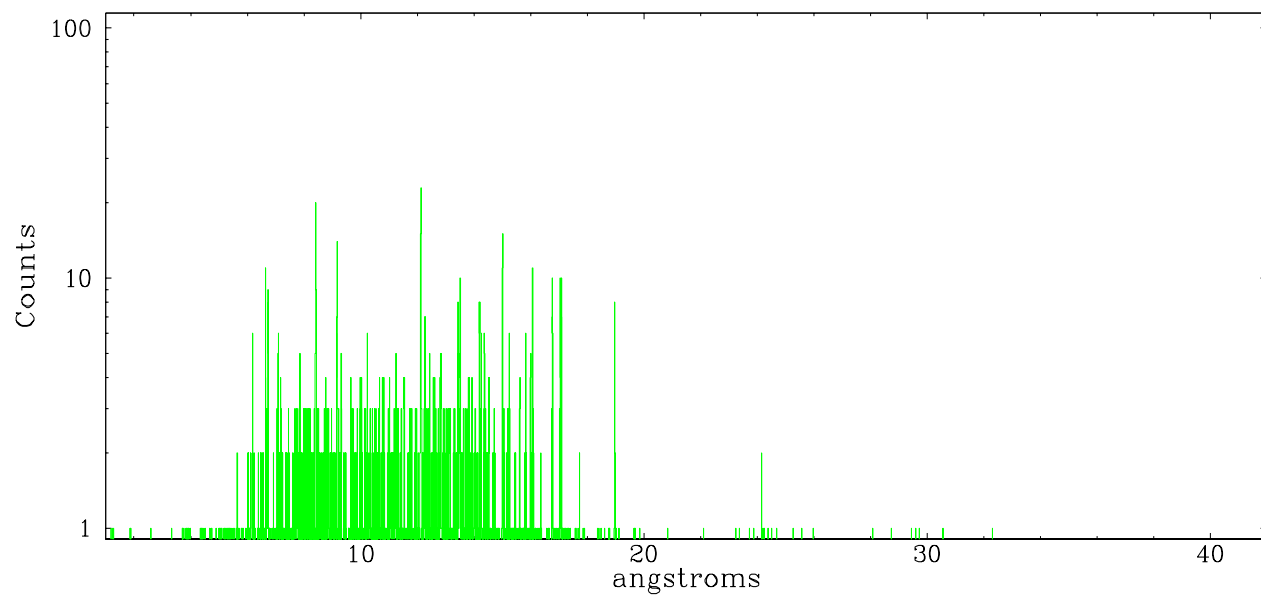
	order -3	order -2	order -1	order 0	order 1	order 2	order 3
Events	348	308	3680	6637	2739	250	290



meg order -1



meg order +1



A Summary

A.1 Status

V&V Scientist	Jen Lauer
V&V Date (YYYY-MM-DD)	2006.09.10
V&V Edition	1
V&V Disposition and Status	OK
V&V Charge Time	45.257

A.2 Comments