

V&V Reference Report

L2 ASCDS Version : 8.4.5

Observation 3441 - L2 Version 3
Chandra X-Ray Center

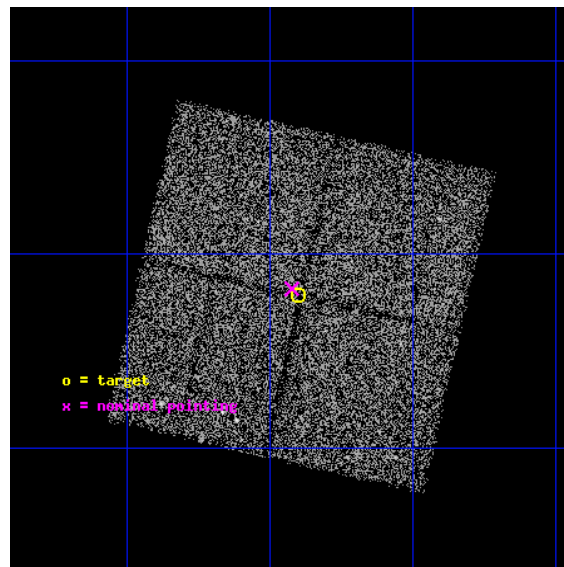
L2 Processing Date : Oct 2 2012

Contents

1	Front	2
2	OBI	3
2.1	OBI	3
2.1.1	Images	3
2.1.2	Bias	3
2.1.3	Parameters	4
2.1.4	Events	4
2.2	Compared Parameters	5
2.3	Aspect	6
2.4	Star Slots	9
2.4.1	Slot 3	9
2.4.2	Slot 4	10
2.4.3	Slot 5	11
2.4.4	Slot 6	12
2.4.5	Slot 7	13
2.5	FID Slots	14
2.5.1	Slot 0	14
2.5.2	Slot 1	15
2.5.3	Slot 2	16
A	Summary	17
A.1	Status	17
A.2	Comments	17

1 Front

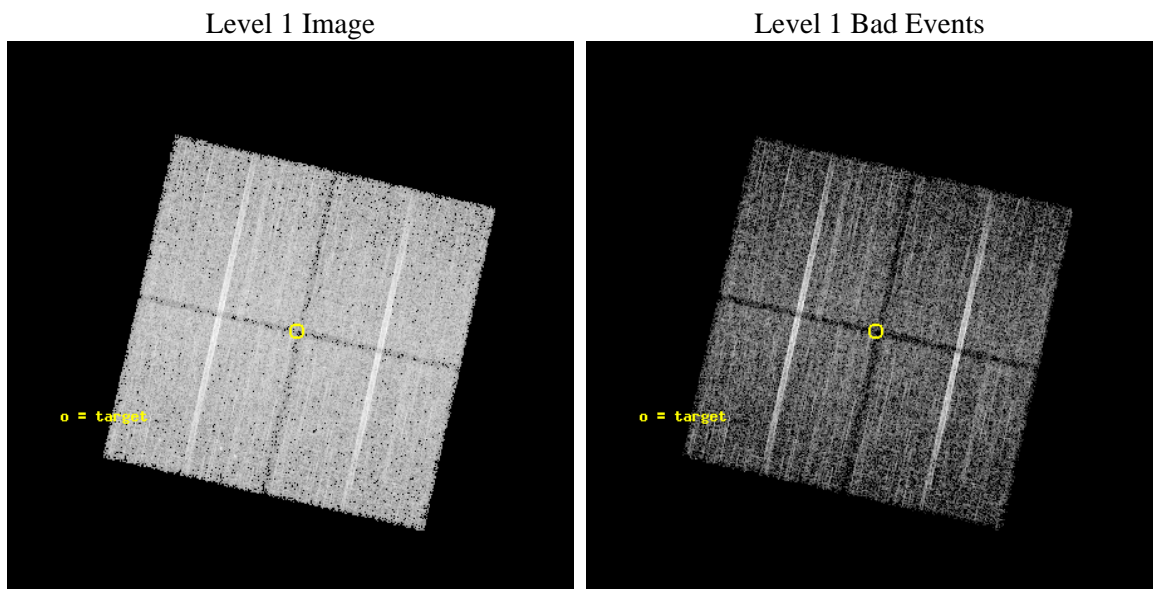
seq_num	500291	Sequence number
obs_id	3441	Observation id
title	LOCALIZATION OF OPTICALLY-DARK GAMMA-RAY BURSTS BY CHANDRA	Proposa
observer	Dr. george Ricker	Principal investigator
object	XRF011130	Source name
dtcycle	0	
cycle	P	events from which exps? Prim/Second/Both
ra_targ	46.350542	Observer's specified target RA [deg]
dec_targ	3.798333	Observer's specified target Dec [deg]
ra_nom	46.355961178955	Nominal RA [deg]
dec_nom	3.8035078704152	Nominal Dec [deg]
roll_nom	282.77409017152	Nominal Roll [deg]
revision	3	Processing version of data
ontime	14672.062009677	Sum of GTIs [s]
livetime	14480.360718106	Livetime [s]
ontime0	14665.65696919	Sum of GTIs [s]
ontime1	14671.979929671	Sum of GTIs [s]
ontime2	14668.880009428	Sum of GTIs [s]
ontime3	14672.062009677	Sum of GTIs [s]
l2events	41329	Number of level 2 events



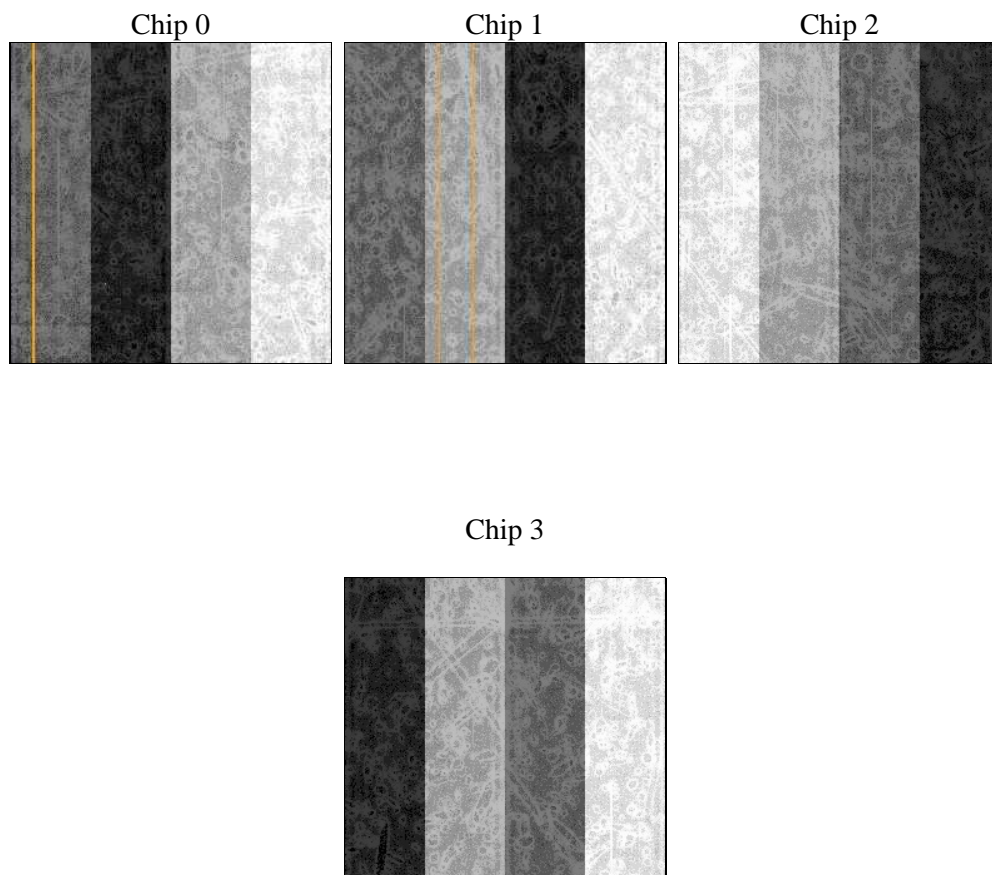
2 OBI

2.1 OBI

2.1.1 Images



2.1.2 Bias



2.1.3 Parameters

obi_num	0	Obi number	sched_exp_time	14600.000000	[s] Scheduled observation exposure time
ascdsver	8.4.5	Processing system revision	ontime	14672.062009677	Sum of GTIs [s]
caldsver	4.5.2	 	ontime0	14665.65696919	Sum of GTIs [s]
date	2012-10-02T14:53:44	Date and time of file creation	ontime1	14671.979929671	Sum of GTIs [s]
revision	3	Processing version of data	ontime2	14668.880009428	Sum of GTIs [s]
			ontime3	14672.062009677	Sum of GTIs [s]
			l1events	388429	Number of level 1 events

2.1.4 Events

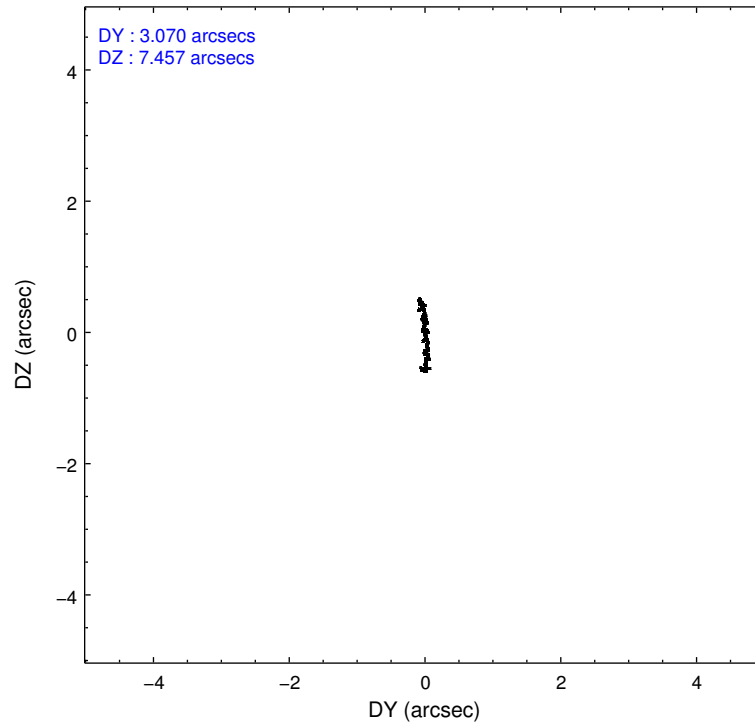
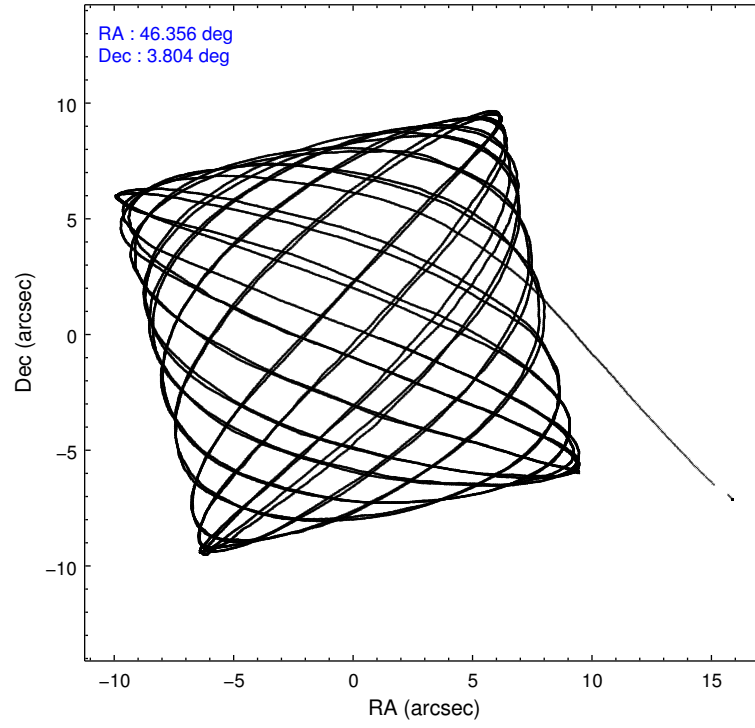
	ccd 0	ccd 1	ccd 2	ccd 3
level 1 events	92673	92950	102570	100236
rejected events	80336	80399	90374	88592
rejected %	86%	86%	88%	88%

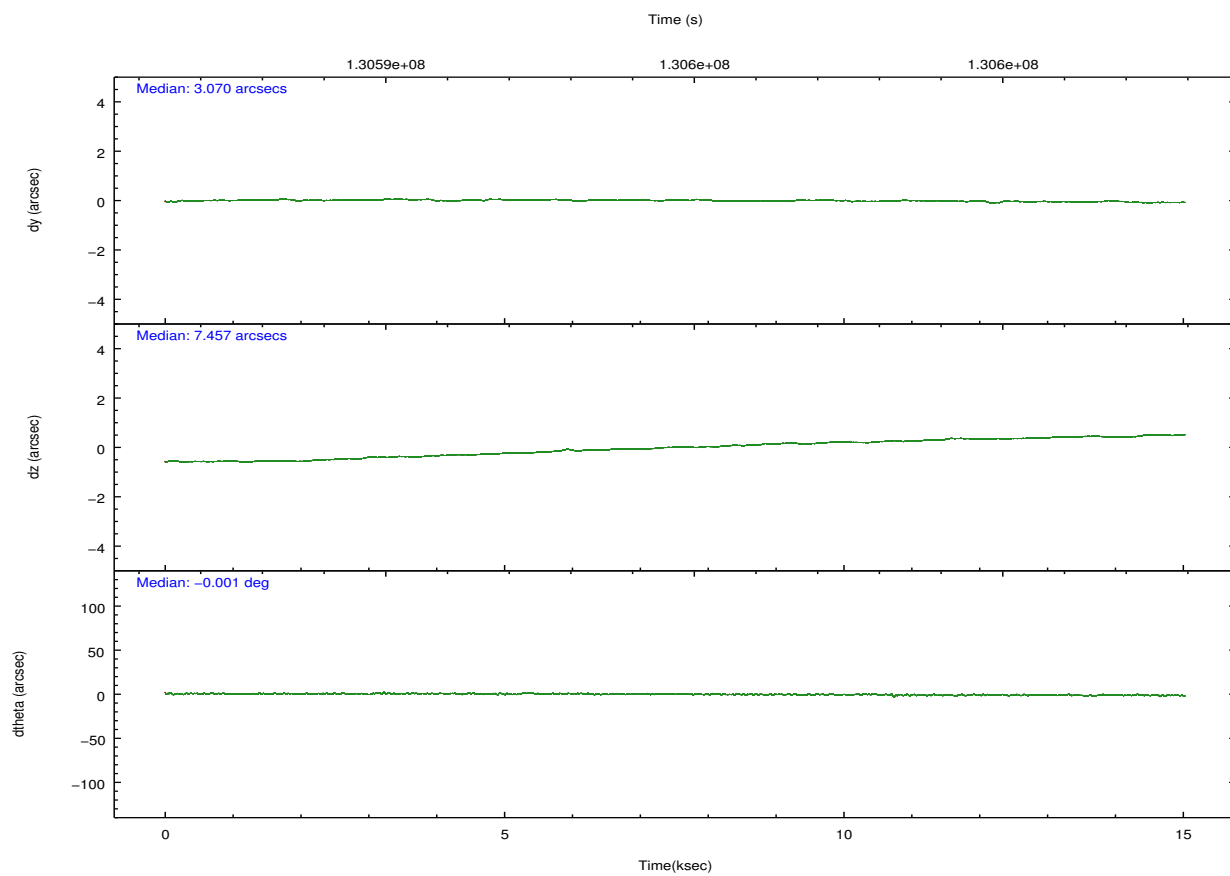
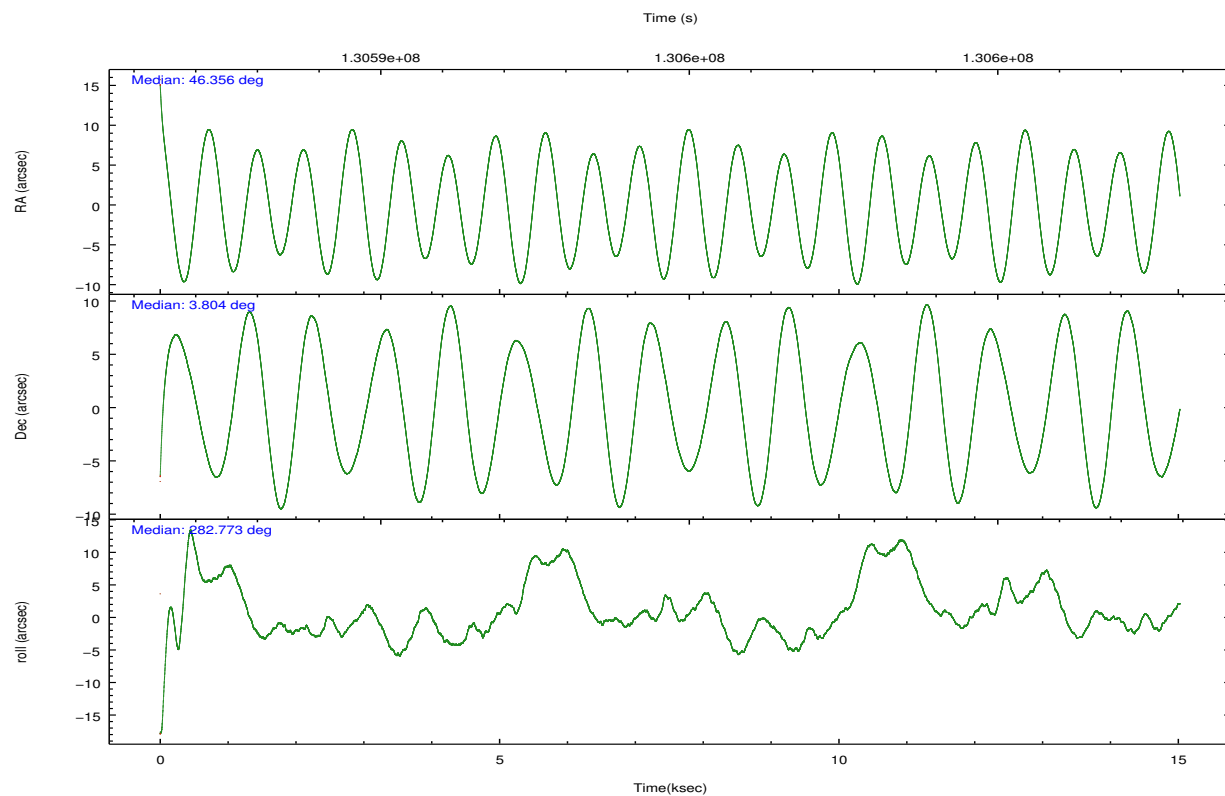
	ccd 0	ccd 1	ccd 2	ccd 3
grade 0 events	5160	5148	5313	4912
	5%	5%	5%	4%
grade 1 events	40	44	44	56
	0%	0%	0%	0%
grade 2 events	2765	2617	2695	2367
	2%	2%	2%	2%
grade 3 events	1165	1243	1069	1142
	1%	1%	1%	1%
grade 4 events	1075	1269	1068	1072
	1%	1%	1%	1%
grade 5 events	3664	3897	3478	4021
	3%	4%	3%	4%
grade 6 events	2174	2277	2056	2152
	2%	2%	2%	2%
grade 7 events	76630	76455	86847	84514
	82%	82%	84%	84%

2.2 Compared Parameters

Parameter	Planned	Actual	Parameter	Planned	Actual
Instrument	ACIS	ACIS	Obspar format version number	7	7
Detector	ACIS-0123	ACIS-0123	Obspar file type	PREDICTED	ACTUAL
Grating	NONE	NONE	Obspar update status	NONE	UPDATED
Data mode	VFAINT	VFAINT	Number of optional ACIS chips dropped	0	0
Observation mode	POINTING	POINTING	On-chip summing requested	N	N
[deg] Pointing RA	46.337235	46.35596117895479	Subarray requested	NONE	NONE
[deg] Pointing Dec	3.823580	3.803507870415218	Alternating exposures requested	N	N
[deg] Pointing Roll	282.566662	282.7740901715237	[s] Primary exposure time	0.000000	3.1
[mm] SIM focus pos	-0.782348	-0.7809083437167272			
[mm] SIM defocus	0	0.001439871863259334			
[mm] SIM translation stage pos	-233.592463	-233.5874344608287			
[mm] SIM translation stage offset	0	-0.005018542100998502			
[s] Observation start time (MET)	130587599.184000	130586519.12481			
Observation start date	2002-02-20T10:18:55	2002-02-20T10:01:59			
[s] Observation end time (MET)	130602199.184000	130602606.50046			
Observation end date	2002-02-20T14:22:15	2002-02-20T14:30:06			
Read mode	TIMED	TIMED			

2.3 Aspect



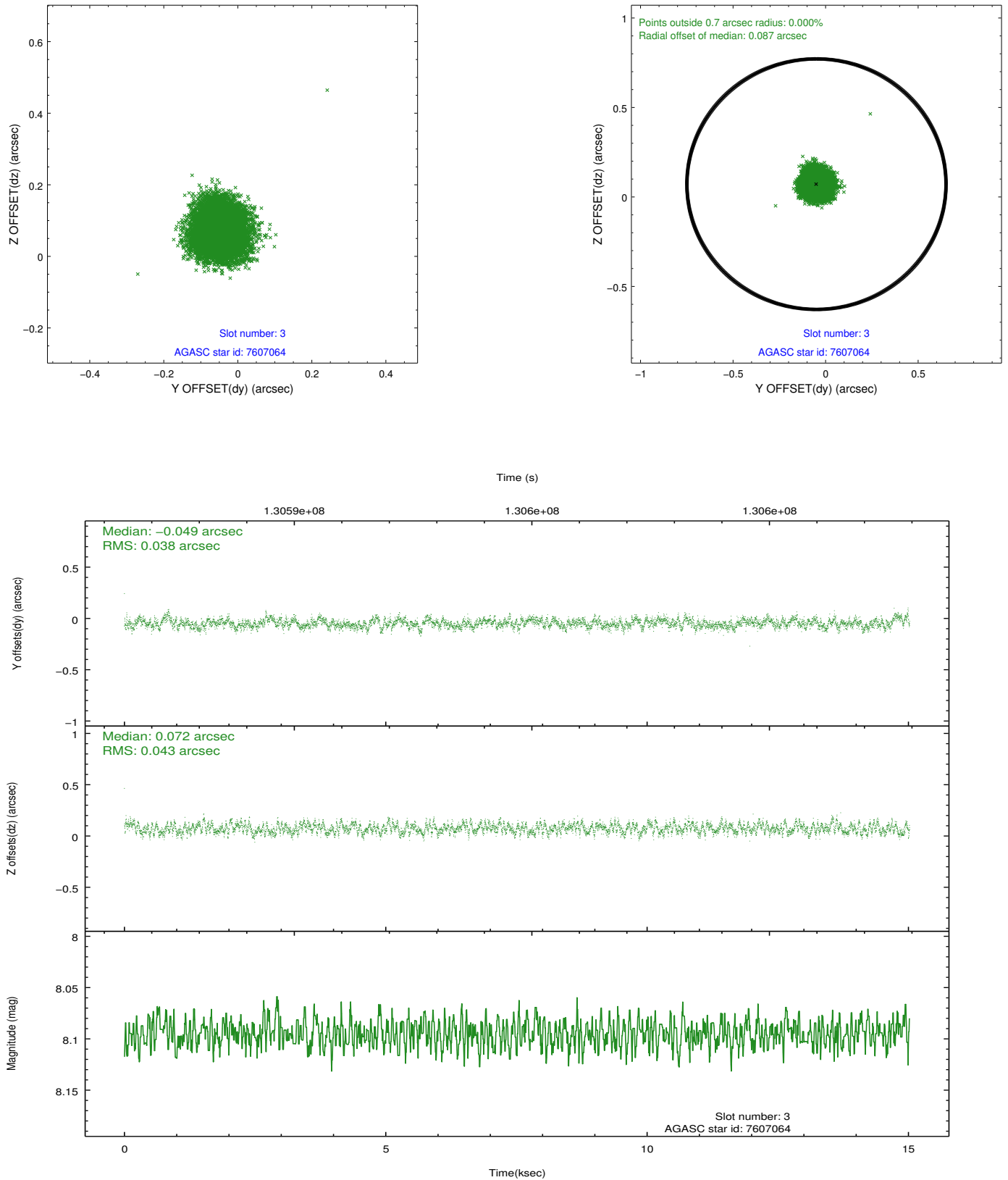


Slot Statistics

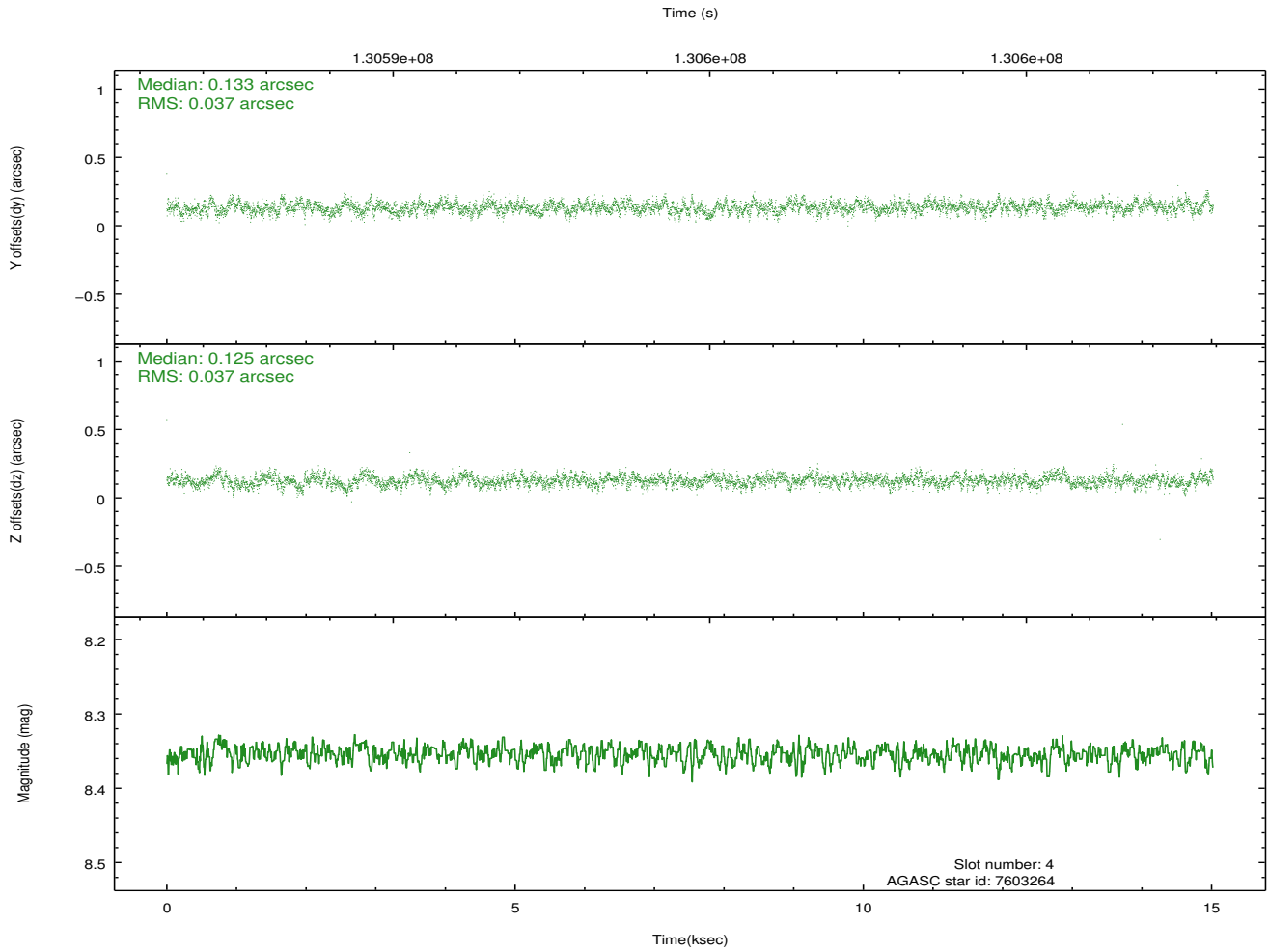
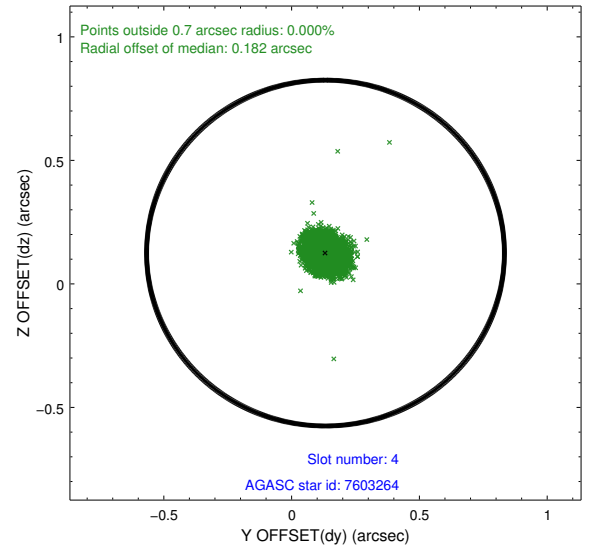
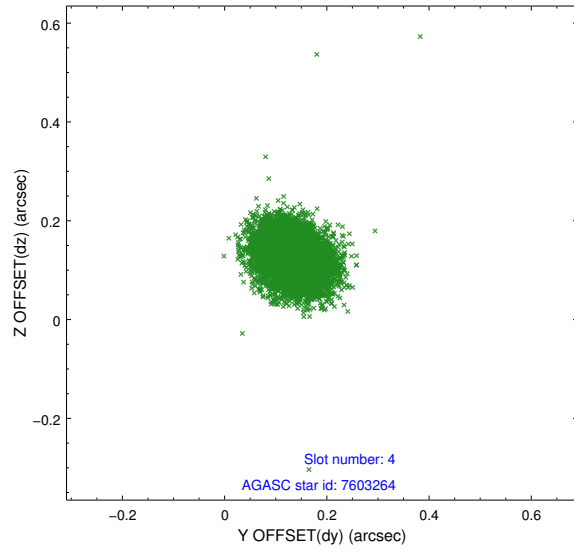
slot	status	id	mag	n_pts	med_dy	med_dz	dr1	dr2	ra	dec	mean_y	mean_z
0	FID	ACIS-I-1	7.24	3664	0.000	0.029	0.018	0.028	0.000000	0.000000	936.71	-830.81
1	FID	ACIS-I-5	7.24	3664	-0.060	0.051	0.008	0.015	0.000000	0.000000	-1811.26	1066.59
2	FID	ACIS-I-6	7.26	3665	-0.030	-0.012	0.014	0.023	0.000000	0.000000	401.94	1711.34
3	GUIDE	7607064	8.10	7328	-0.049	0.072	0.062	0.096	46.593930	3.810123	248.06	889.16
4	GUIDE	7603264	8.35	7328	0.133	0.125	0.054	0.089	46.951152	3.412010	1925.98	1831.10
5	GUIDE	7609528	8.36	7330	0.092	-0.048	0.053	0.085	46.606589	3.264522	2175.68	506.90
6	GUIDE	7608464	9.14	7297	-0.208	-0.047	0.084	0.138	46.255189	4.465600	-2319.54	215.09
7	GUIDE	7608536	9.41	7324	0.033	-0.101	0.089	0.146	46.097165	3.496897	960.19	-1098.27

2.4 Star Slots

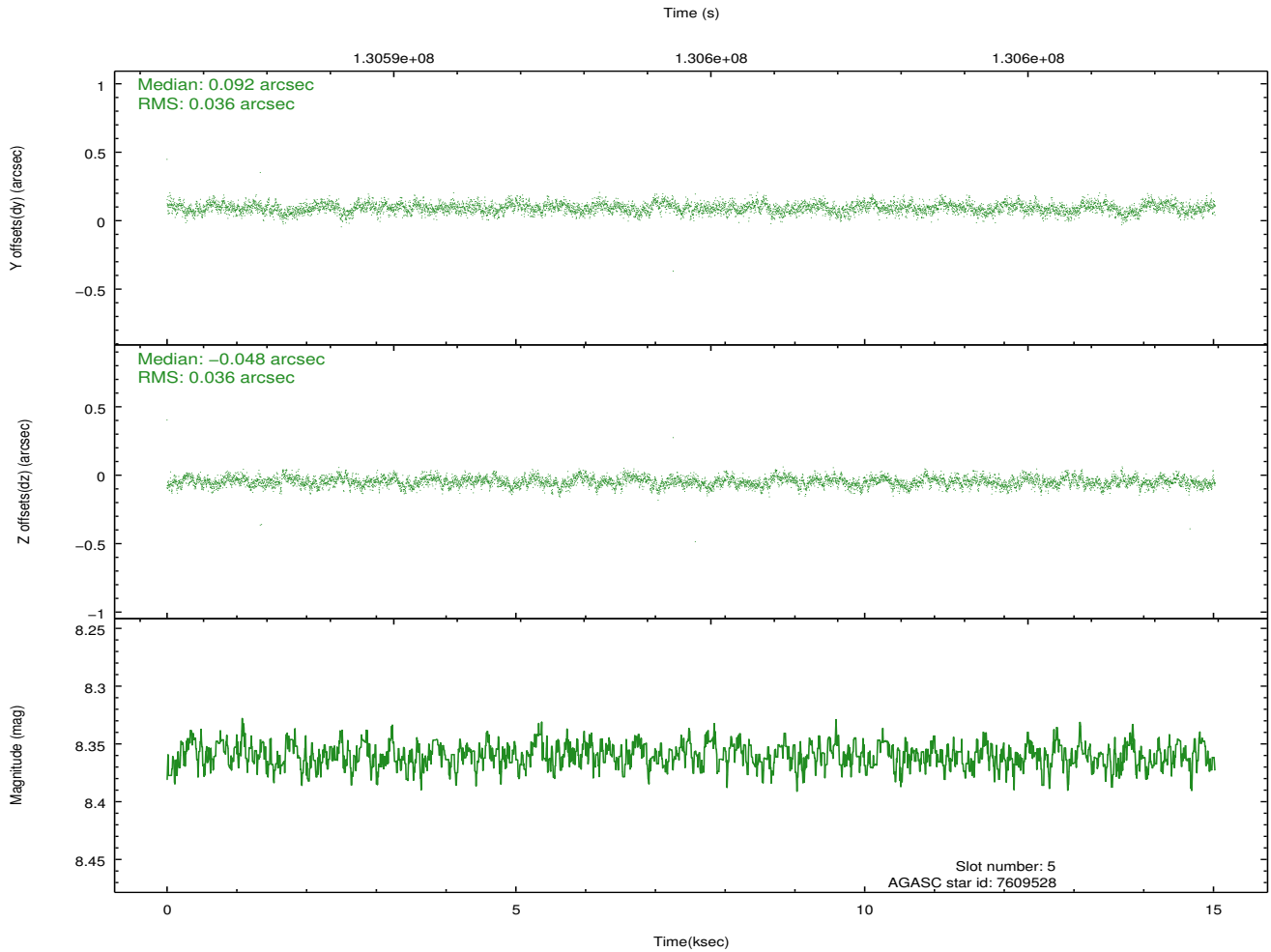
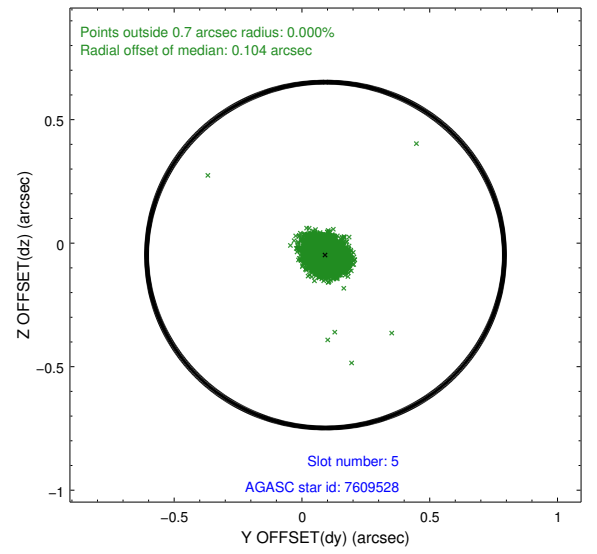
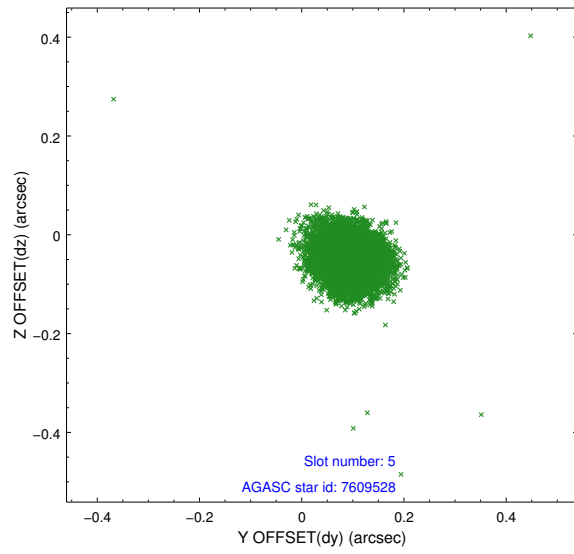
2.4.1 Slot 3



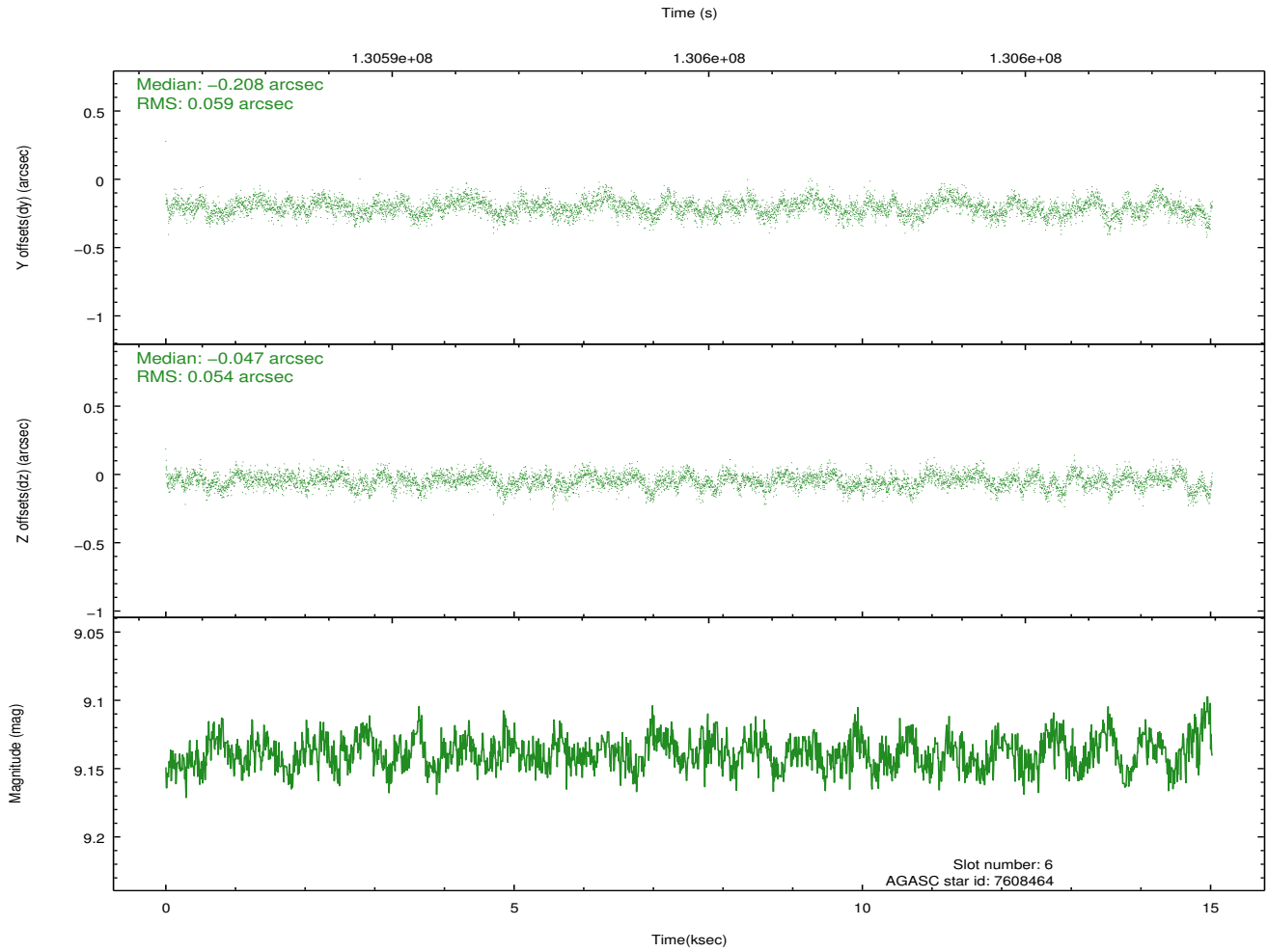
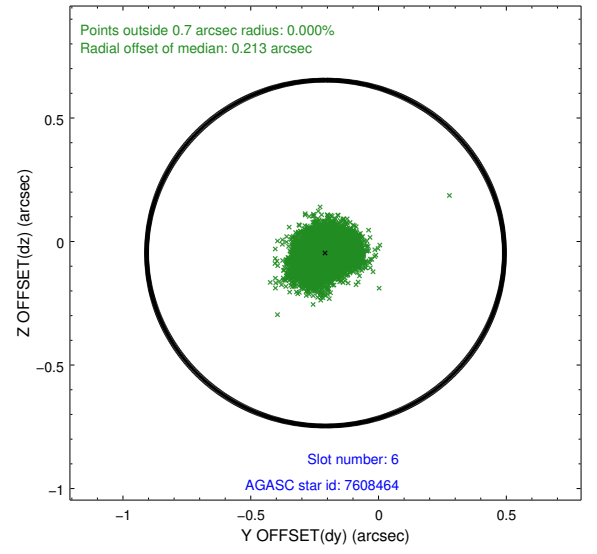
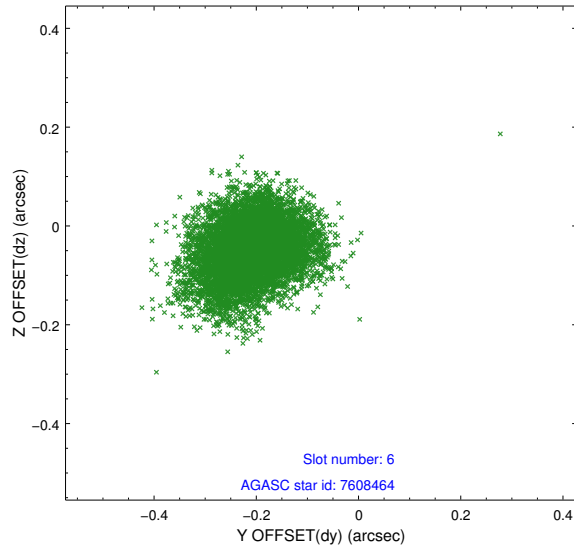
2.4.2 Slot 4



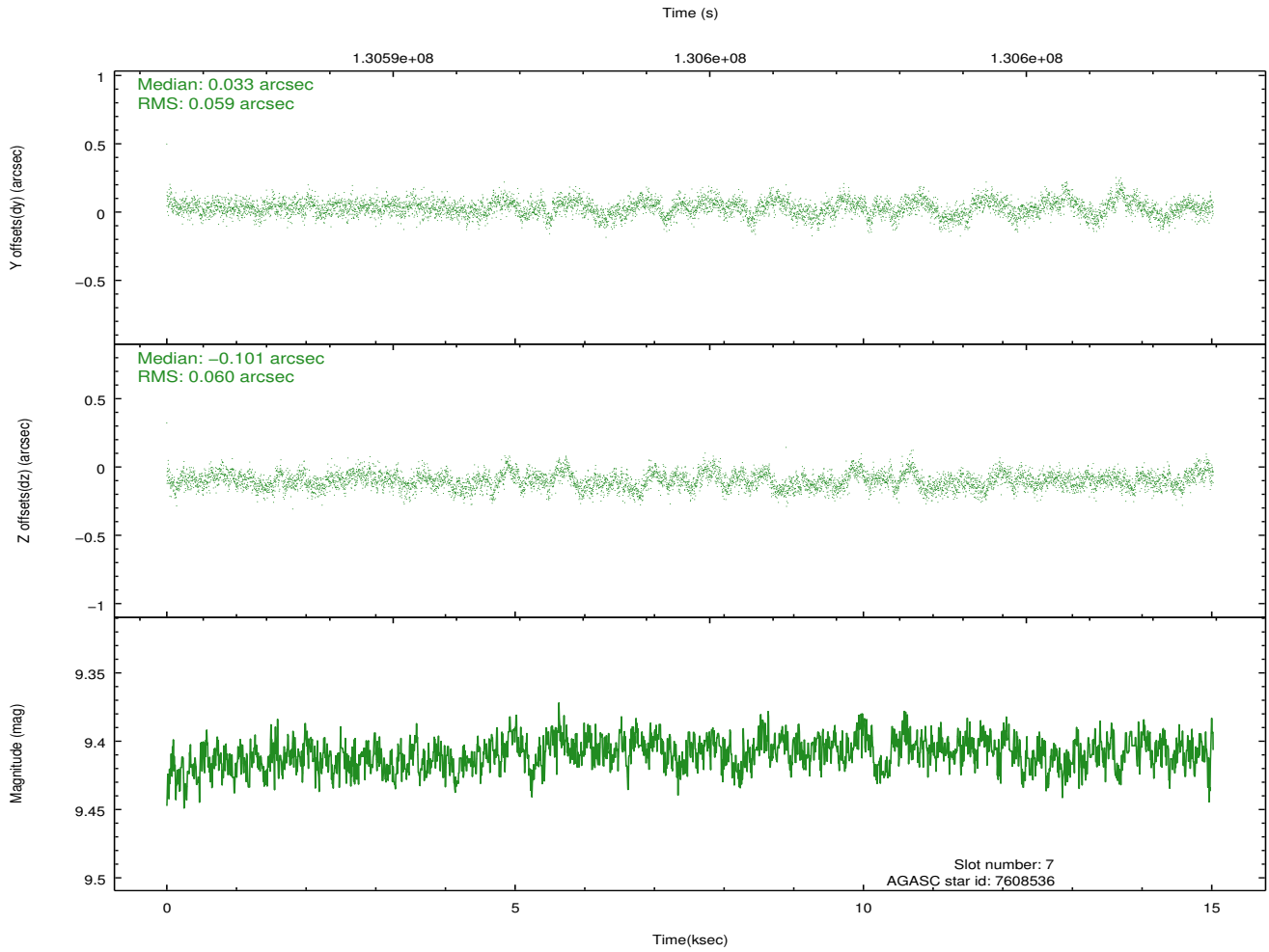
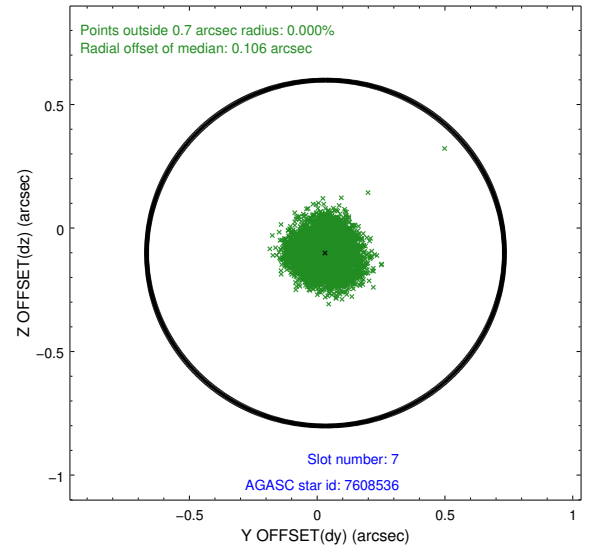
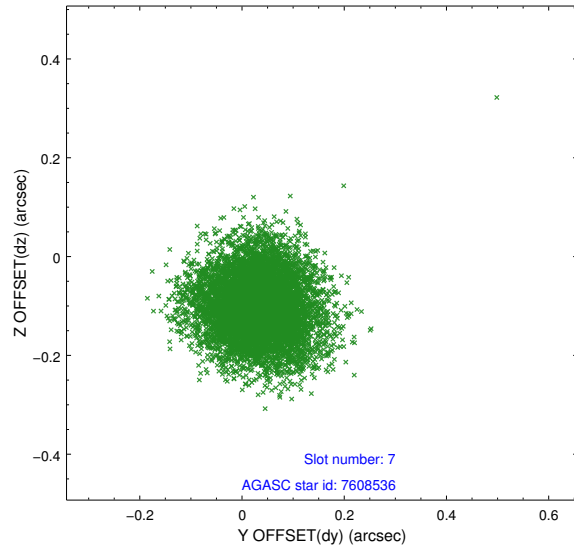
2.4.3 Slot 5



2.4.4 Slot 6

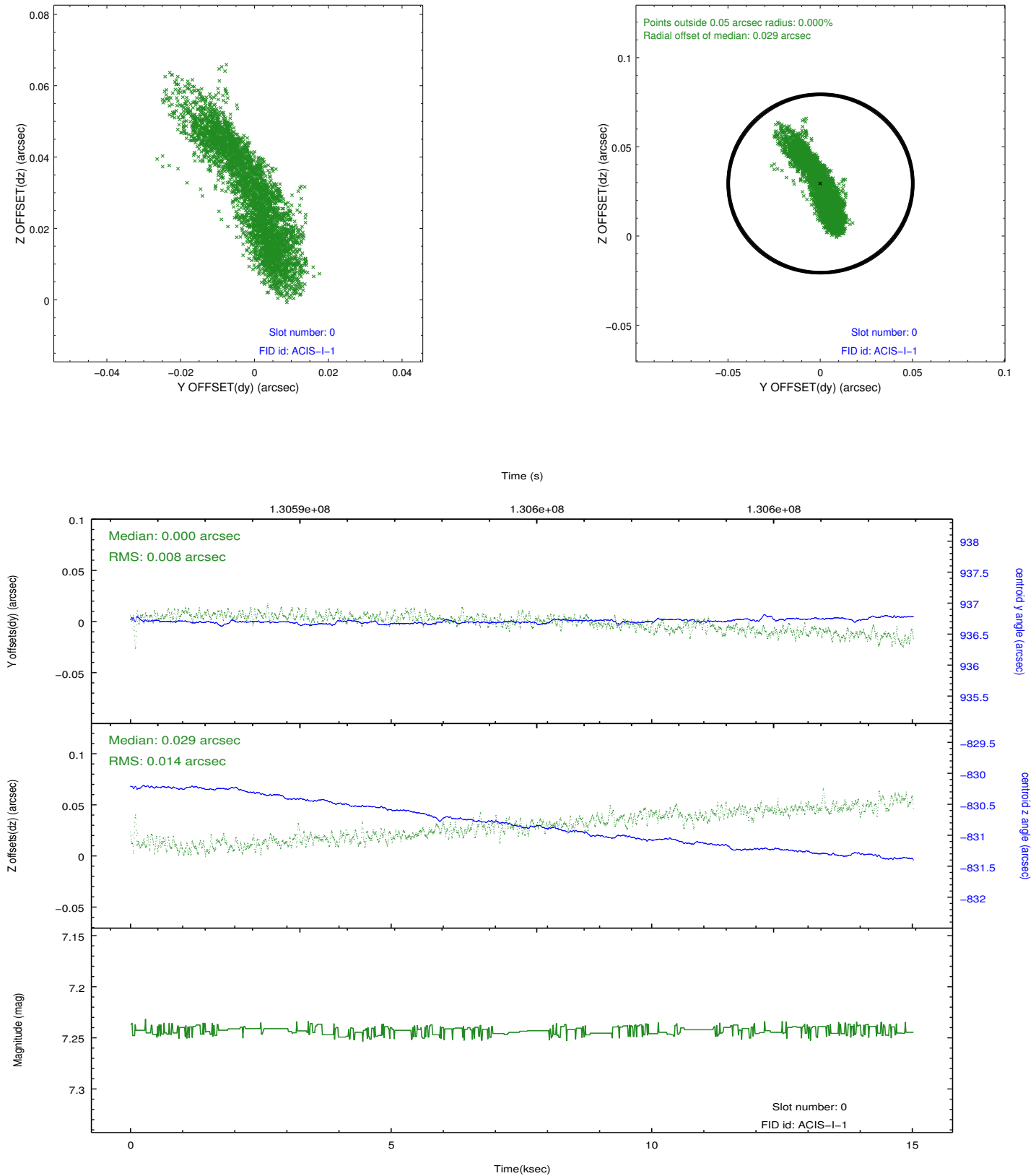


2.4.5 Slot 7

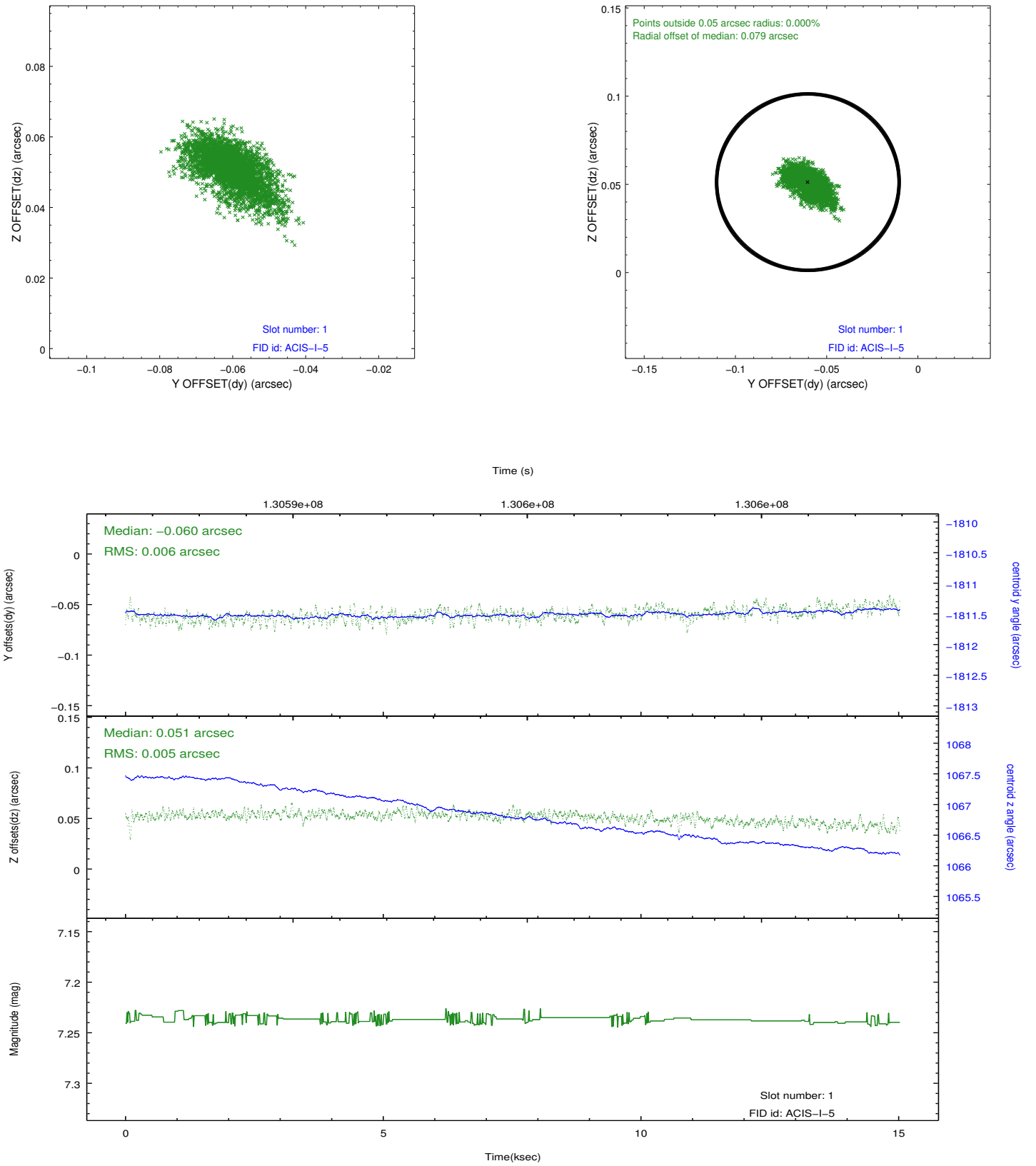


2.5 FID Slots

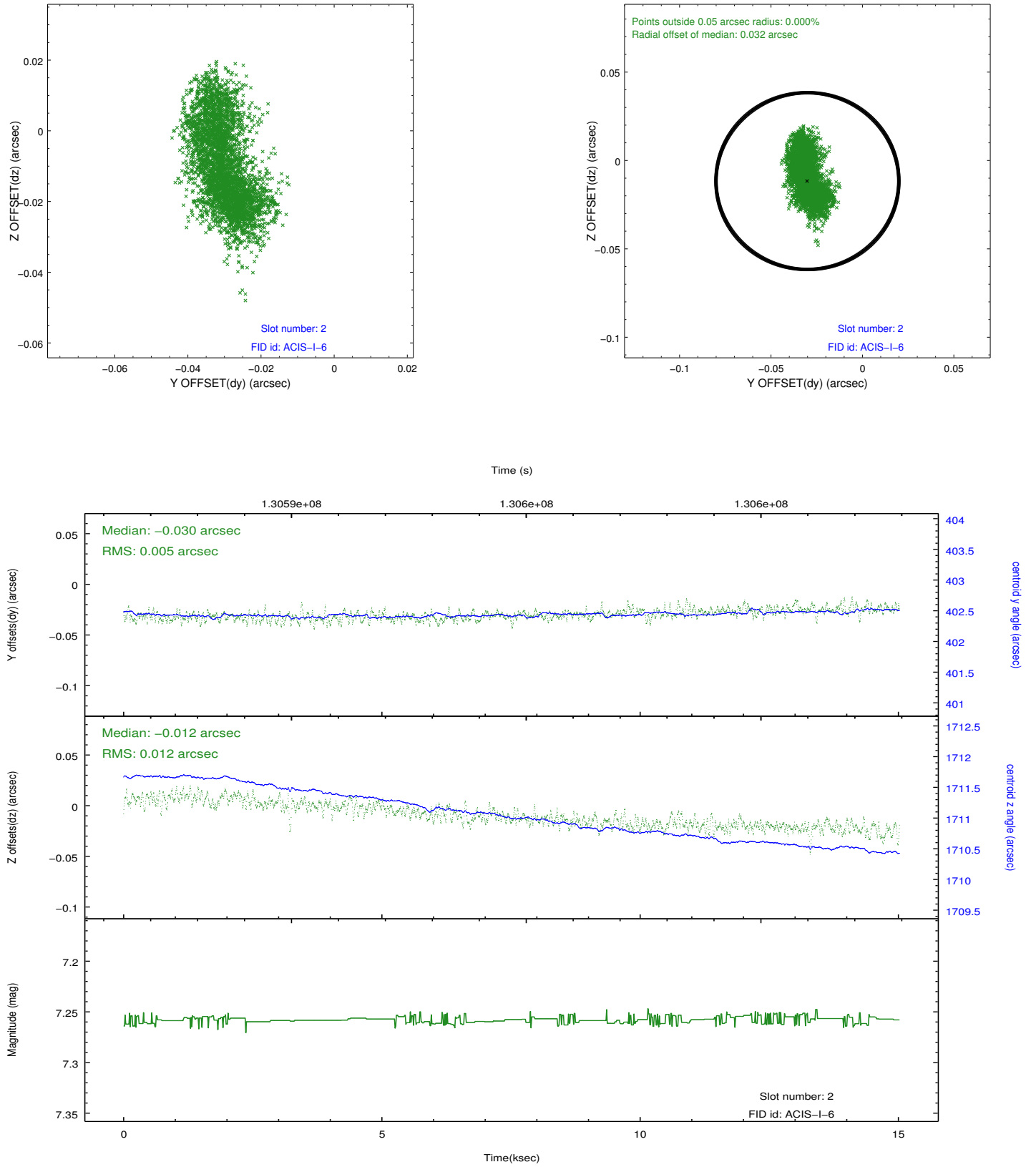
2.5.1 Slot 0



2.5.2 Slot 1



2.5.3 Slot 2



A Summary

A.1 Status

V&V Scientist	Jen Lauer
V&V Date (YYYY-MM-DD)	2012.10.03
V&V Edition	1
V&V Disposition and Status	OK
V&V Charge Time	14.672

A.2 Comments

The source was requested to be placed in the center of the gap between the four chips.