

V&V Reference Report

L2 ASCDS Version : 8.4.5

Observation 3351 - L2 Version 3
Chandra X-Ray Center

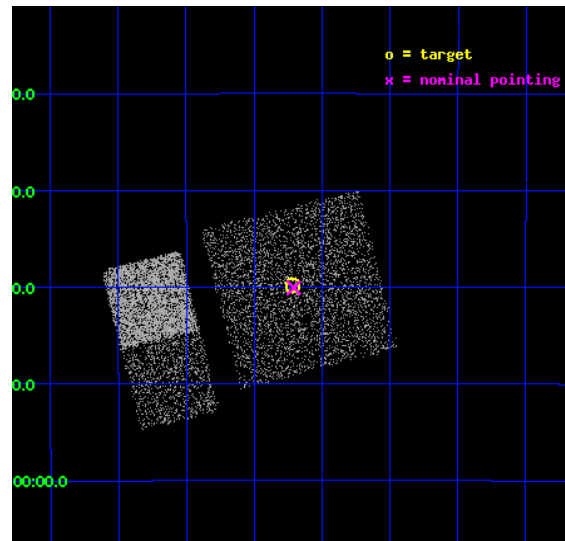
L2 Processing Date : Oct 8 2012

Contents

1	Front	2
2	OBI	3
2.1	OBI	3
2.1.1	Images	3
2.1.2	Bias	3
2.1.3	Parameters	4
2.1.4	Events	4
2.2	Compared Parameters	5
2.3	Aspect	6
2.4	Star Slots	9
2.4.1	Slot 3	9
2.4.2	Slot 4	10
2.4.3	Slot 5	11
2.4.4	Slot 6	12
2.4.5	Slot 7	13
2.5	FID Slots	14
2.5.1	Slot 0	14
2.5.2	Slot 1	15
2.5.3	Slot 2	16
A	Summary	17
A.1	Status	17
A.2	Comments	17

1 Front

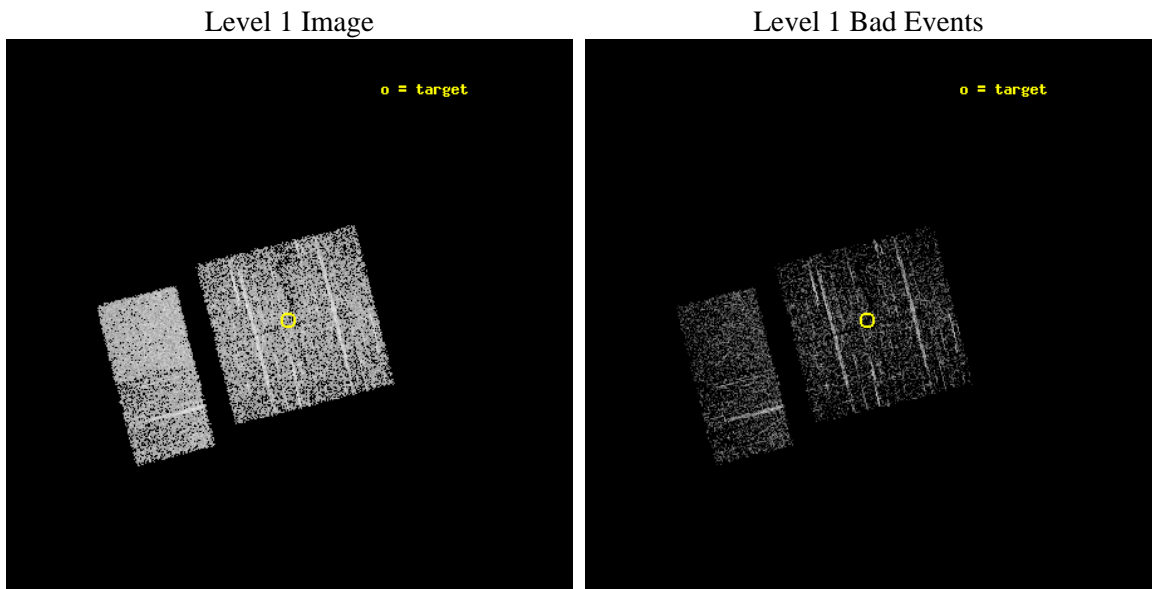
seq_num	900190	Sequence number
obs_id	3351	Observation id
title	CHANDRA OBSERVATIONS OF OPTICALLY FAINT SOURCES DISCOVERED WITH ASCA	
observer	Dr Yoshihiro Ueda	Principal investigator
object	1AXG J110713-1839	Source name
dtcycle	0	
cycle	P	events from which exps? Prim/Second/Both
ra_targ	166.804583	Observer's specified target RA [deg]
dec_targ	-18.664306	Observer's specified target Dec [deg]
ra_nom	166.80166995949	Nominal RA [deg]
dec_nom	-18.667974510336	Nominal Dec [deg]
roll_nom	255.76476120503	Nominal Roll [deg]
revision	3	Processing version of data
ontime	1755.9590188861	Sum of GTIs [s]
livetime	1733.7240084774	Livetime [s]
ontime0	1755.835898906	Sum of GTIs [s]
ontime1	1755.8769388795	Sum of GTIs [s]
ontime2	1755.9179788828	Sum of GTIs [s]
ontime3	1755.9590188861	Sum of GTIs [s]
ontime6	1756.0410988927	Sum of GTIs [s]
ontime7	1756.0000588894	Sum of GTIs [s]
l2events	11434	Number of level 2 events



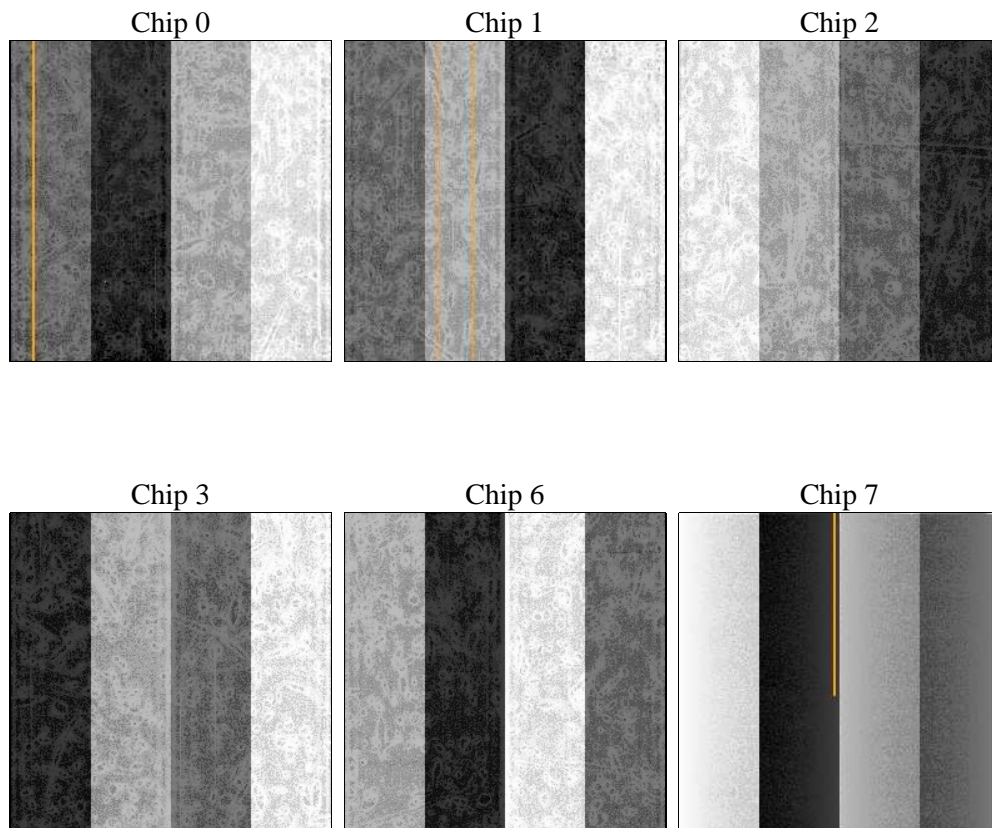
2 OBI

2.1 OBI

2.1.1 Images



2.1.2 Bias



2.1.3 Parameters

obi_num	0	Obi number	sched_exp_time	2000.000000	[s] Scheduled observation exposure time
ascdsver	8.4.5	Processing system revision	ontime	1755.9590188861	Sum of GTIs [s]
caldsver	4.5.2	 	ontime0	1755.835898906	Sum of GTIs [s]
date	2012-10-08T05:42:07	Date and time of file creation	ontime1	1755.8769388795	Sum of GTIs [s]
revision	3	Processing version of data	ontime2	1755.9179788828	Sum of GTIs [s]
			ontime3	1755.9590188861	Sum of GTIs [s]
			ontime6	1756.0410988927	Sum of GTIs [s]
			ontime7	1756.0000588894	Sum of GTIs [s]
			l1events	64173	Number of level 1 events

2.1.4 Events

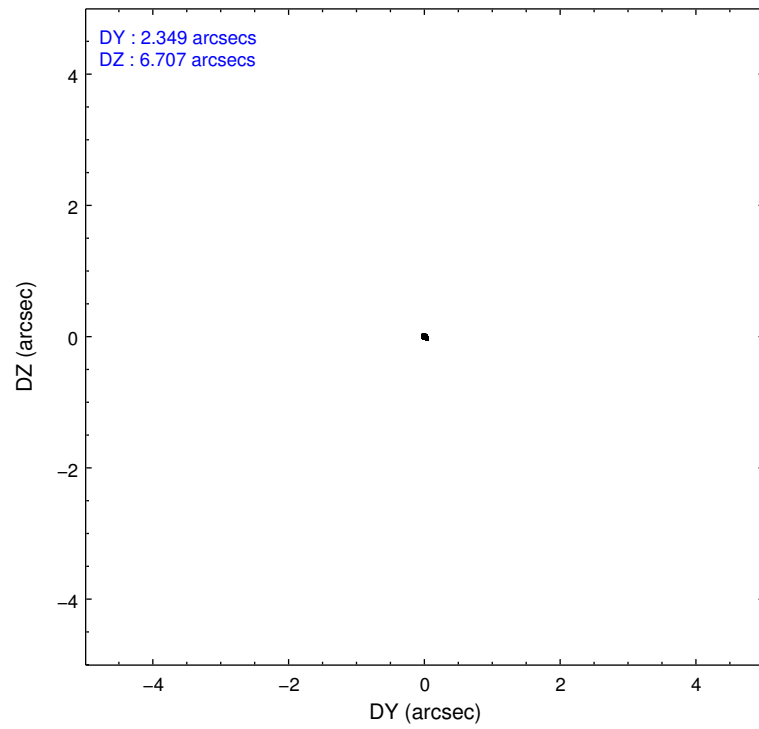
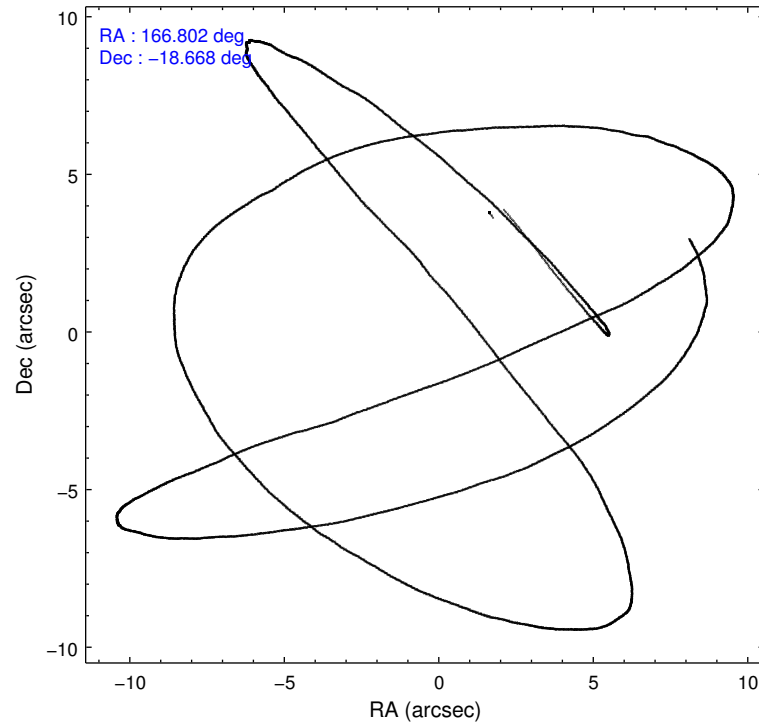
	ccd 0	ccd 1	ccd 2	ccd 3	ccd 6	ccd 7
level 1 events	9663	9176	10164	10427	10439	14304
rejected events	8333	7795	8896	9090	9129	8393
rejected %	86%	84%	87%	87%	87%	58%

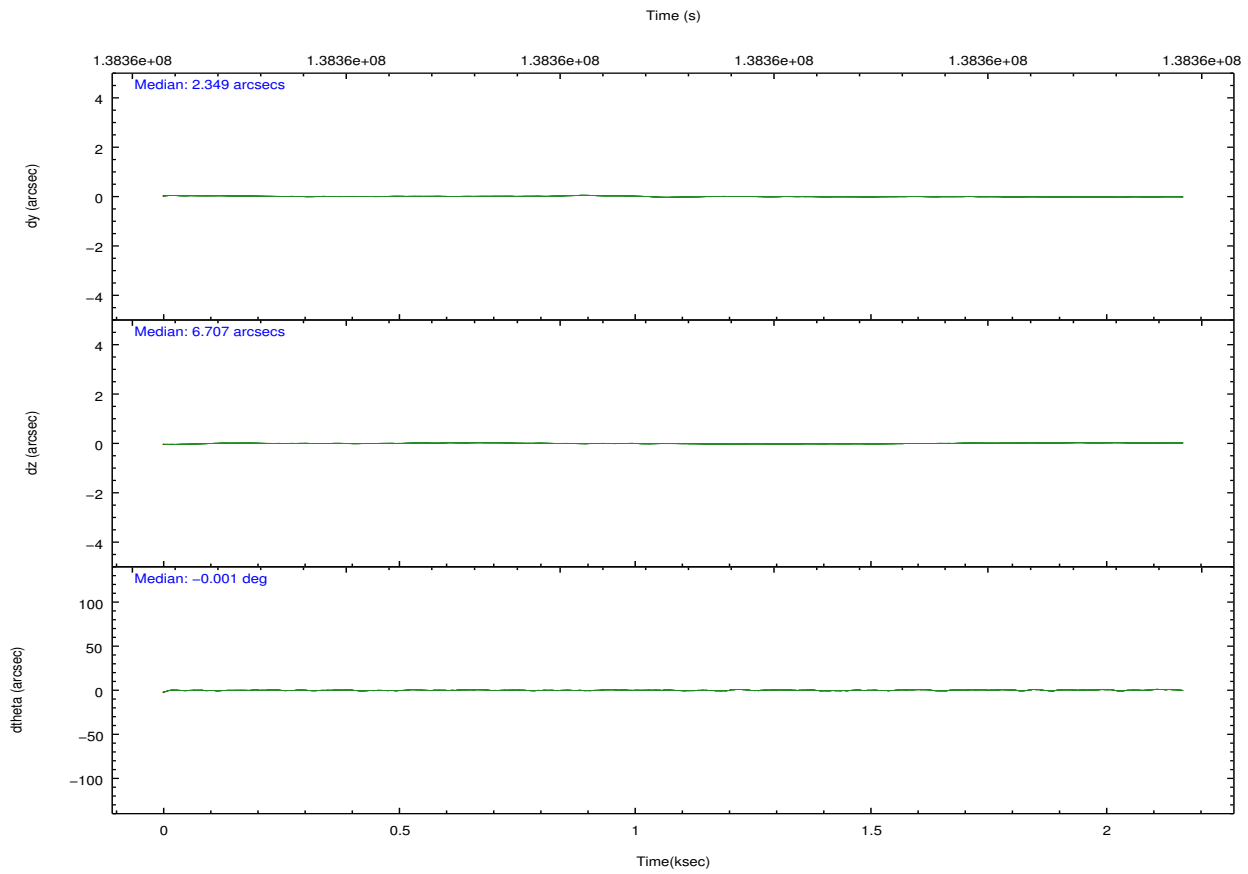
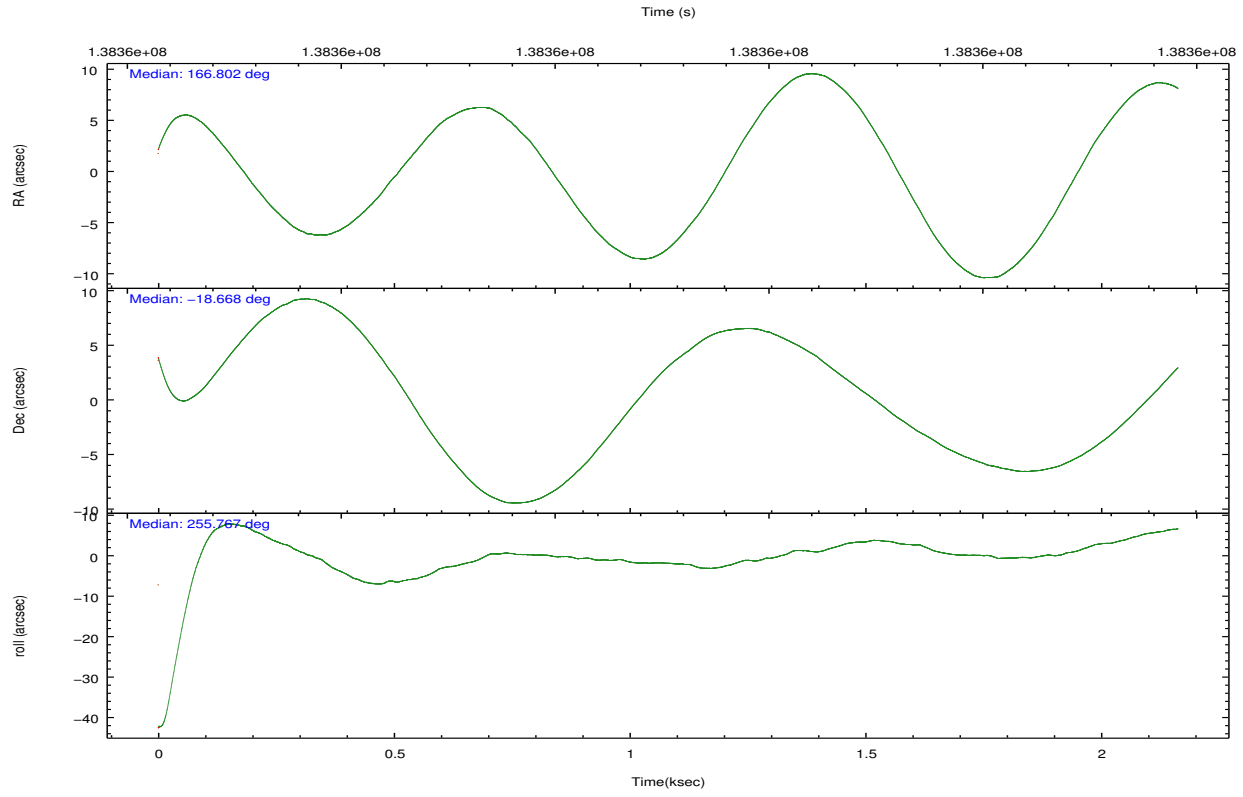
	ccd 0	ccd 1	ccd 2	ccd 3	ccd 6	ccd 7
grade 0 events	571	594	540	601	536	593
	5%	6%	5%	5%	5%	4%
grade 1 events	6	6	4	5	8	17
	0%	0%	0%	0%	0%	0%
grade 2 events	272	289	250	261	273	1190
	2%	3%	2%	2%	2%	8%
grade 3 events	124	144	111	113	127	523
	1%	1%	1%	1%	1%	3%
grade 4 events	128	132	121	119	126	556
	1%	1%	1%	1%	1%	3%
grade 5 events	415	403	377	420	456	1324
	4%	4%	3%	4%	4%	9%
grade 6 events	236	223	249	245	248	3057
	2%	2%	2%	2%	2%	21%
grade 7 events	7911	7385	8512	8663	8665	7044
	81%	80%	83%	83%	83%	49%

2.2 Compared Parameters

Parameter	Planned	Actual	Parameter	Planned	Actual
Instrument	ACIS	ACIS	Obspar format version number	7	7
Detector	ACIS-012367	ACIS-012367	Obspar file type	PREDICTED	ACTUAL
Grating	NONE	NONE	Obspar update status	NONE	UPDATED
Data mode	FAINT	FAINT	Number of optional ACIS chips dropped	0	0
Observation mode	POINTING	POINTING	On-chip summing requested	N	N
[deg] Pointing RA	166.793662	166.8016699594858	Subarray requested	NONE	NONE
[deg] Pointing Dec	-18.641678	-18.66797451033591	Alternating exposures requested	N	N
[deg] Pointing Roll	255.553812	255.7647612050346	[s] Primary exposure time	0.000000	3.2
[mm] SIM focus pos	-0.782348	-0.7809083437167272			
[mm] SIM defocus	0	0.001439871863259334			
[mm] SIM translation stage pos	-233.592463	-233.5874344608287			
[mm] SIM translation stage offset	0	-0.005018542100998502			
[s] Observation start time (MET)	138355346.184000	138354380.46526			
Observation start date	2002-05-21T08:01:22	2002-05-21T07:46:20			
[s] Observation end time (MET)	138357346.184000	138357938.75291			
Observation end date	2002-05-21T08:34:42	2002-05-21T08:45:38			
Read mode	TIMED	TIMED			

2.3 Aspect



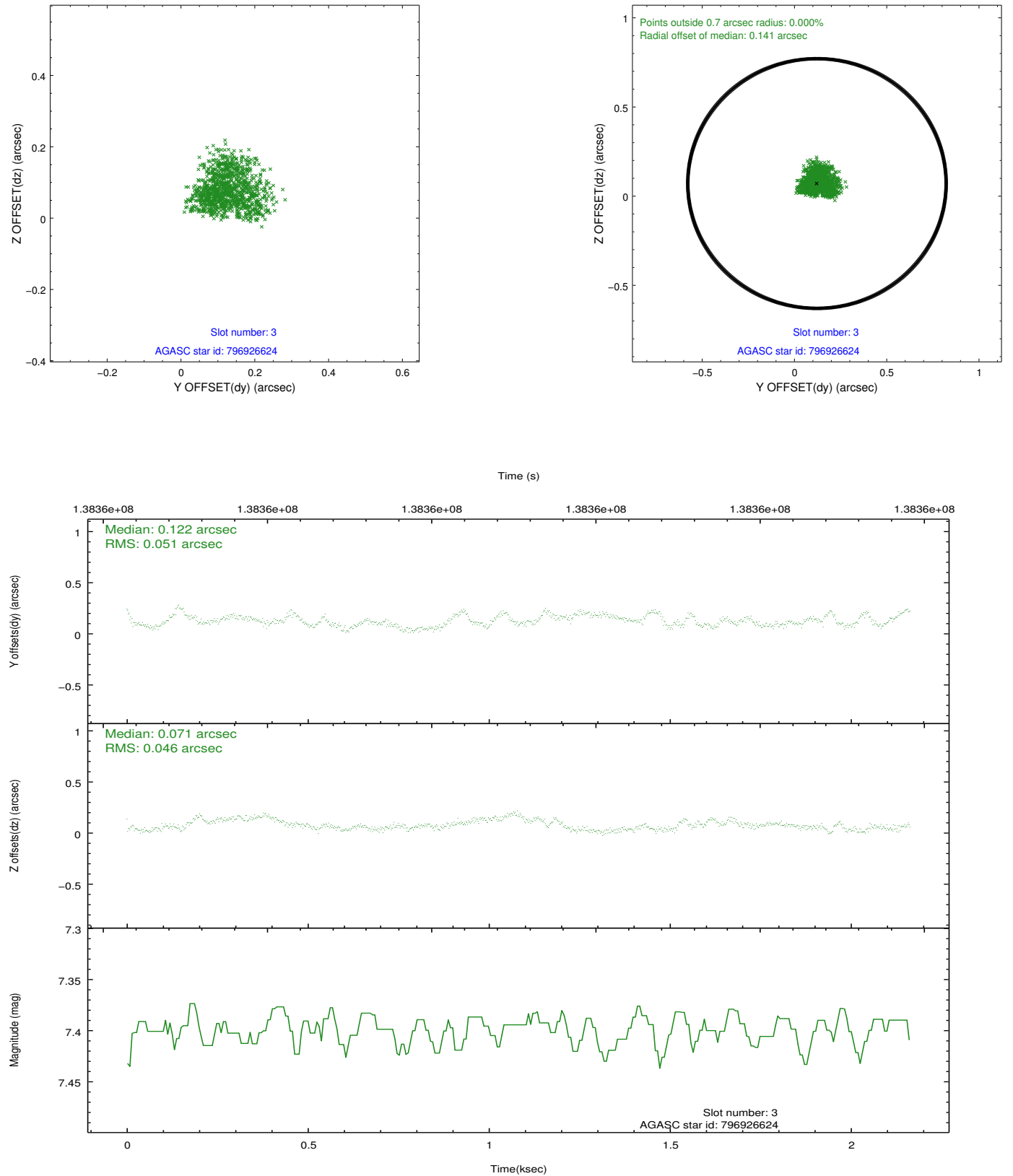


Slot Statistics

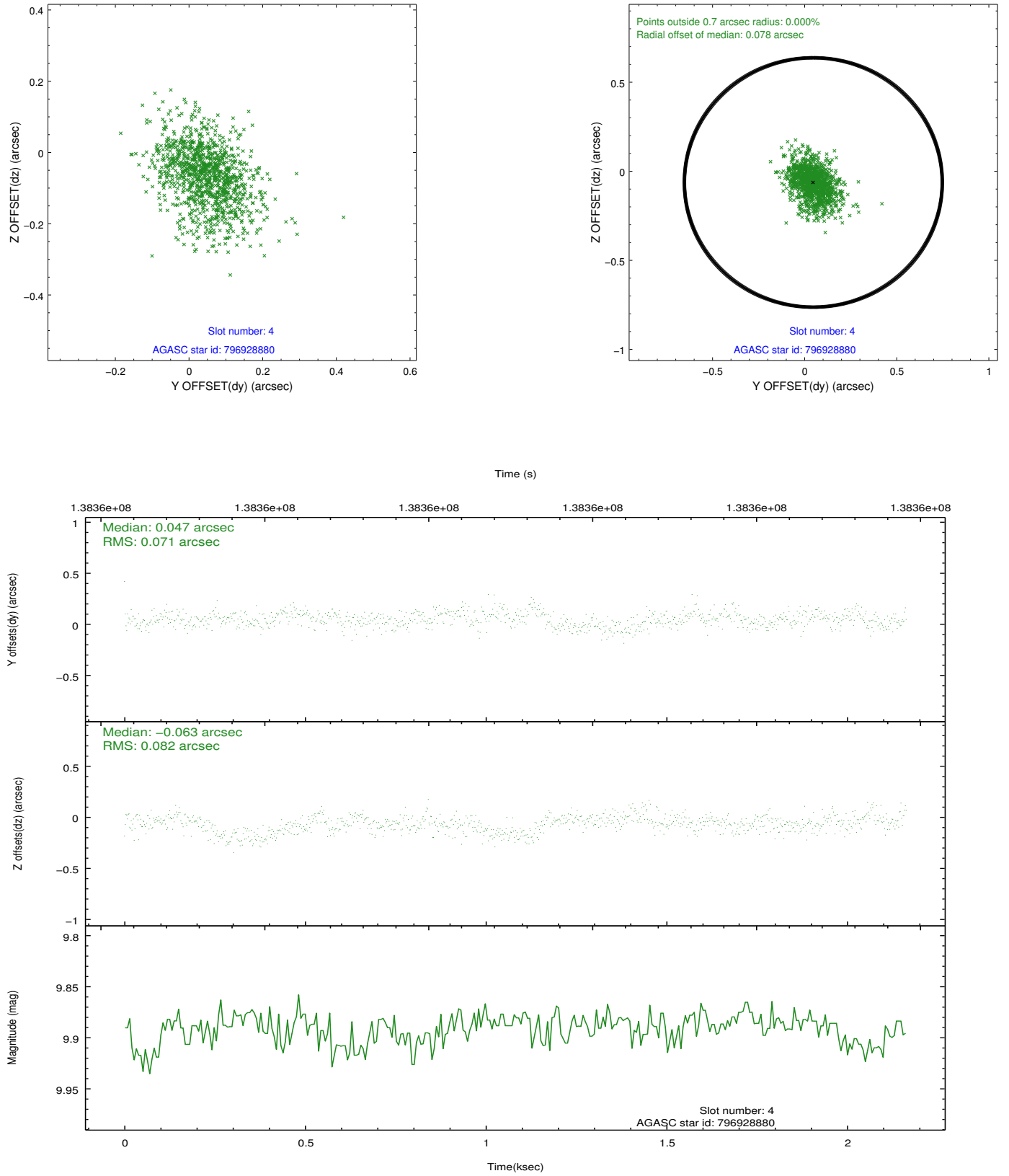
slot	status	id	mag	n_pts	med_dy	med_dz	dr1	dr2	ra	dec	mean_y	mean_z
0	FID	ACIS-I-1	7.25	528	-0.003	0.012	0.006	0.010	0.000000	0.000000	937.44	-830.10
1	FID	ACIS-I-5	7.24	528	-0.048	0.048	0.006	0.010	0.000000	0.000000	-1808.99	1065.99
2	FID	ACIS-I-6	7.26	528	-0.040	0.010	0.007	0.010	0.000000	0.000000	399.74	1713.82
3	GUIDE	796926624	7.40	1056	0.122	0.071	0.075	0.114	167.237604	-19.416468	2327.79	2156.18
4	GUIDE	796928880	9.89	1056	0.047	-0.063	0.114	0.196	166.621408	-18.801010	705.54	-423.20
5	GUIDE	796932472	9.72	1056	0.047	0.011	0.094	0.157	167.178755	-19.209082	1654.30	1777.27
6	GUIDE	796923960	9.16	1056	-0.180	-0.057	0.075	0.123	167.114946	-18.113690	-2111.92	592.36
7	GUIDE	796927416	10.17	1054	-0.040	0.034	0.111	0.175	166.806842	-18.379218	-927.62	-191.39

2.4 Star Slots

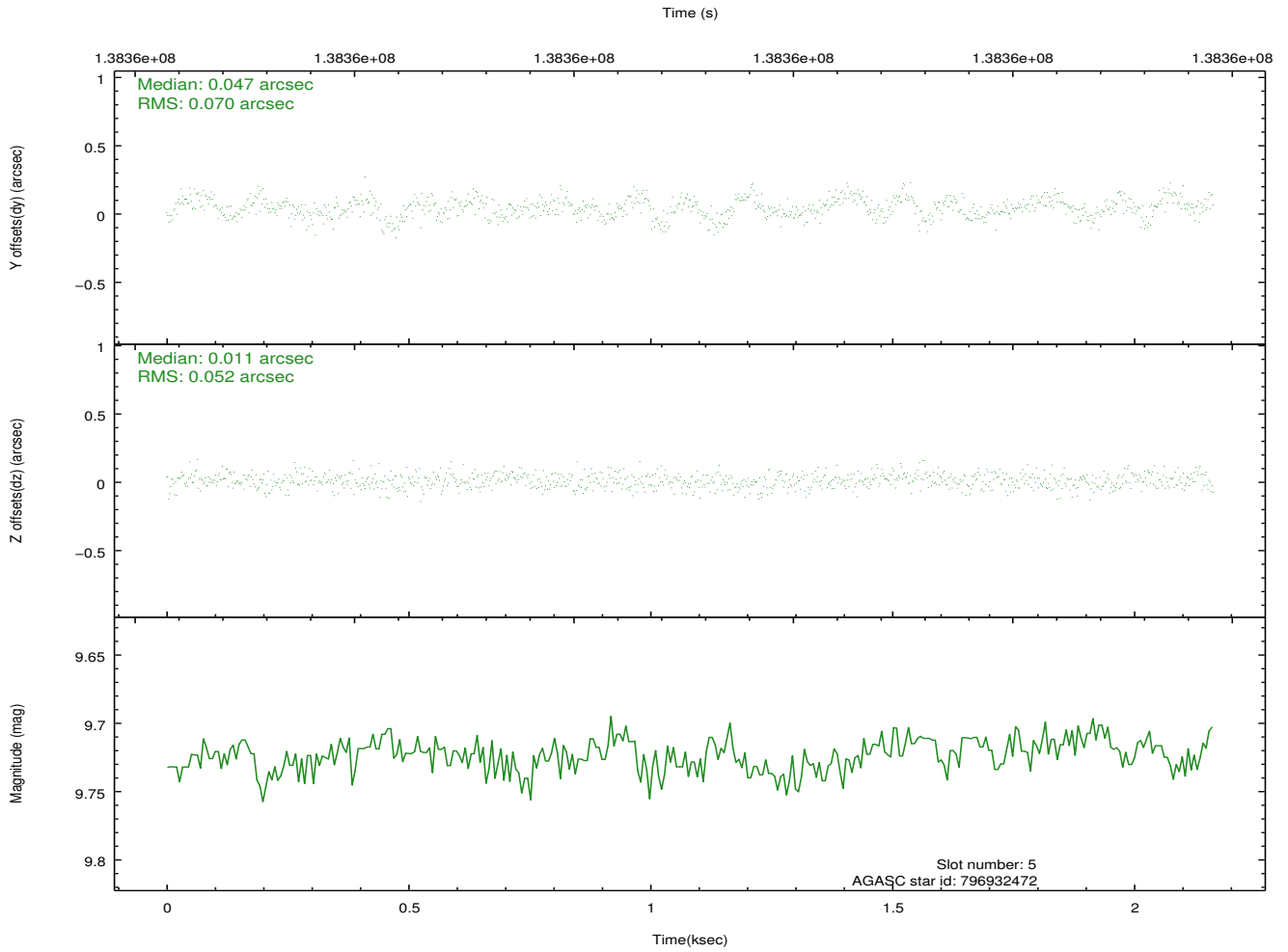
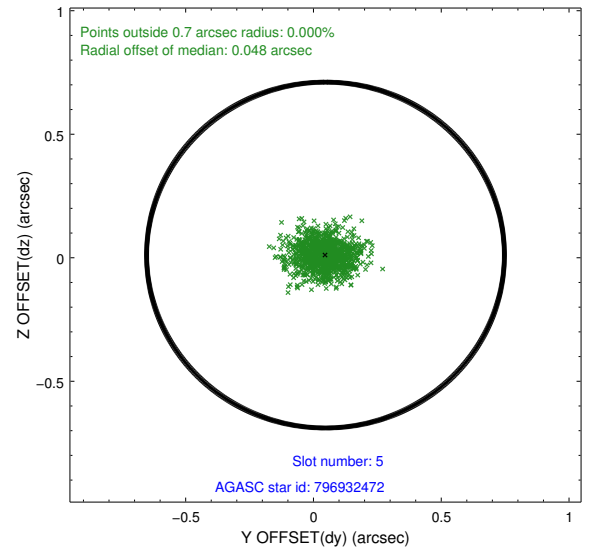
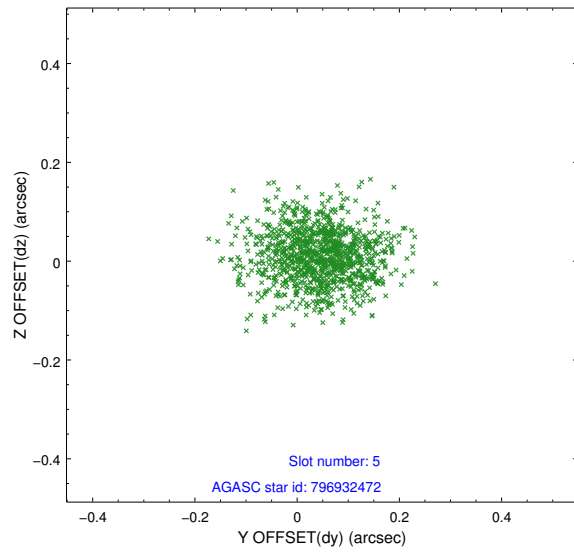
2.4.1 Slot 3



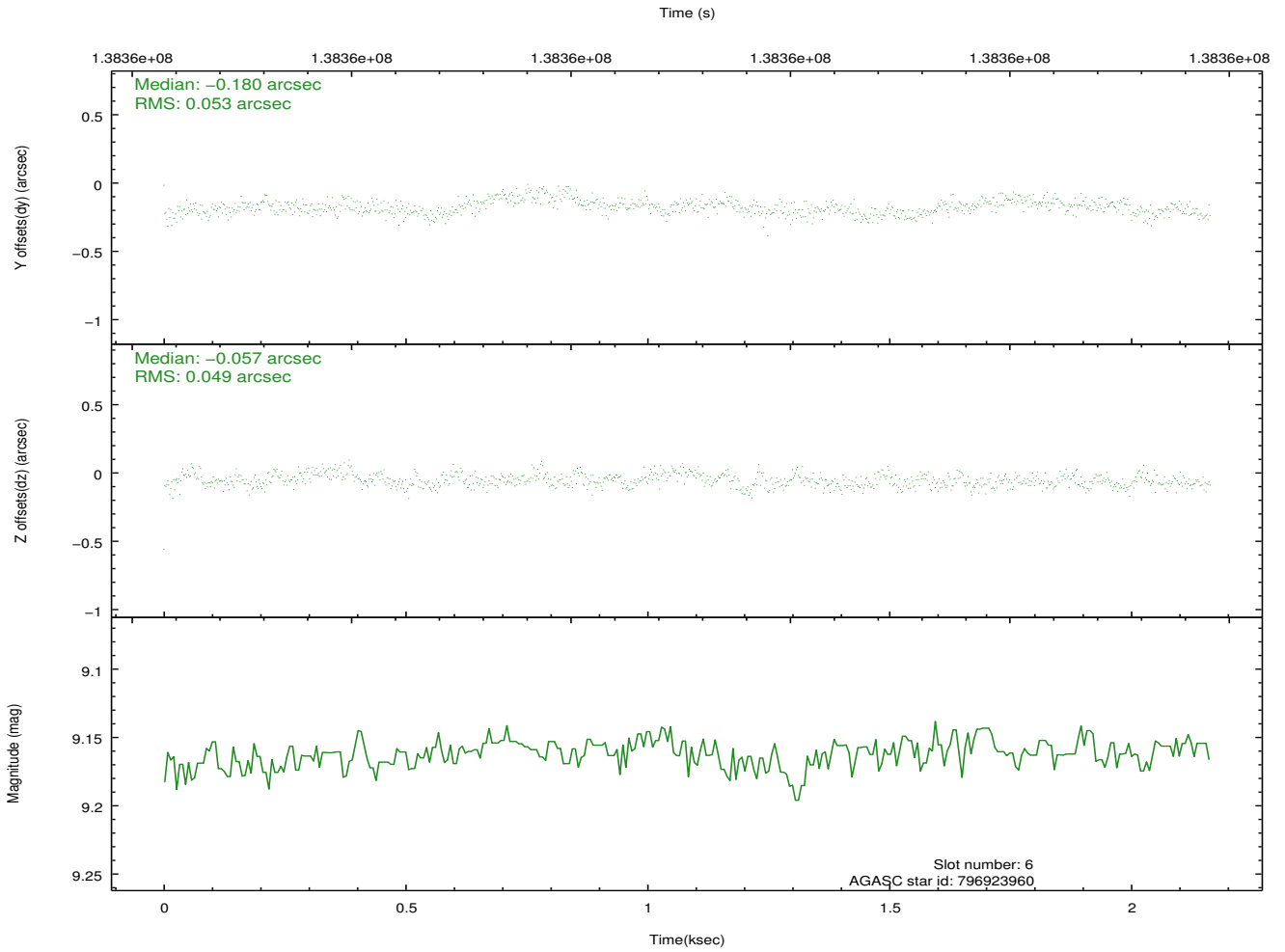
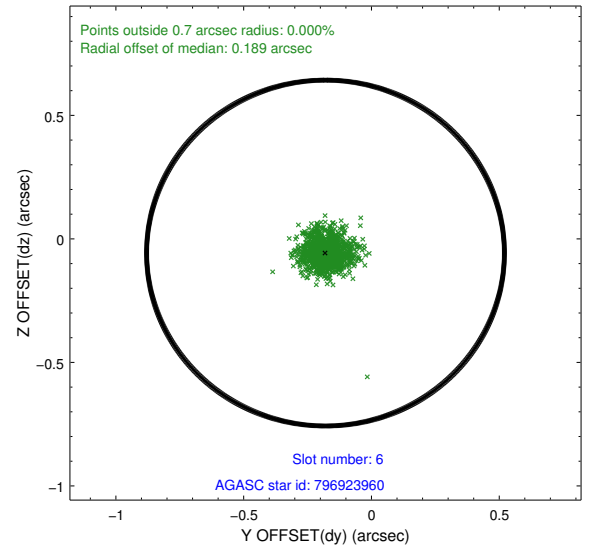
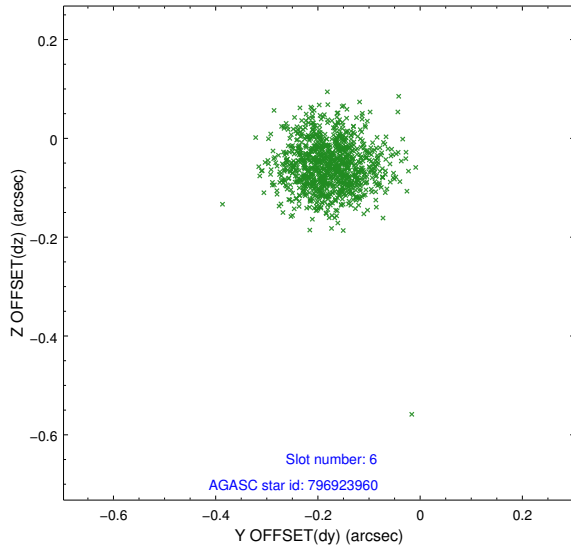
2.4.2 Slot 4



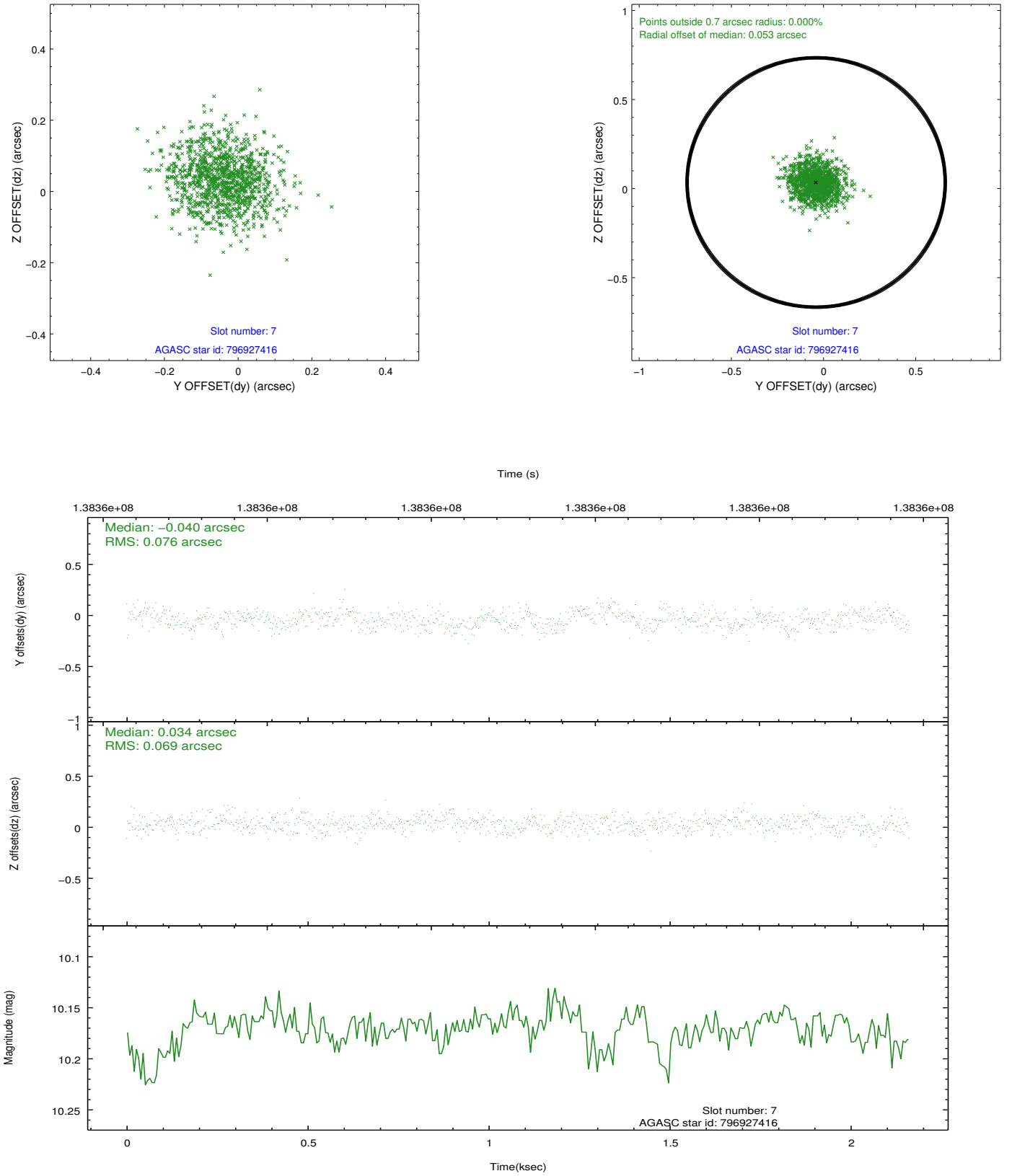
2.4.3 Slot 5



2.4.4 Slot 6

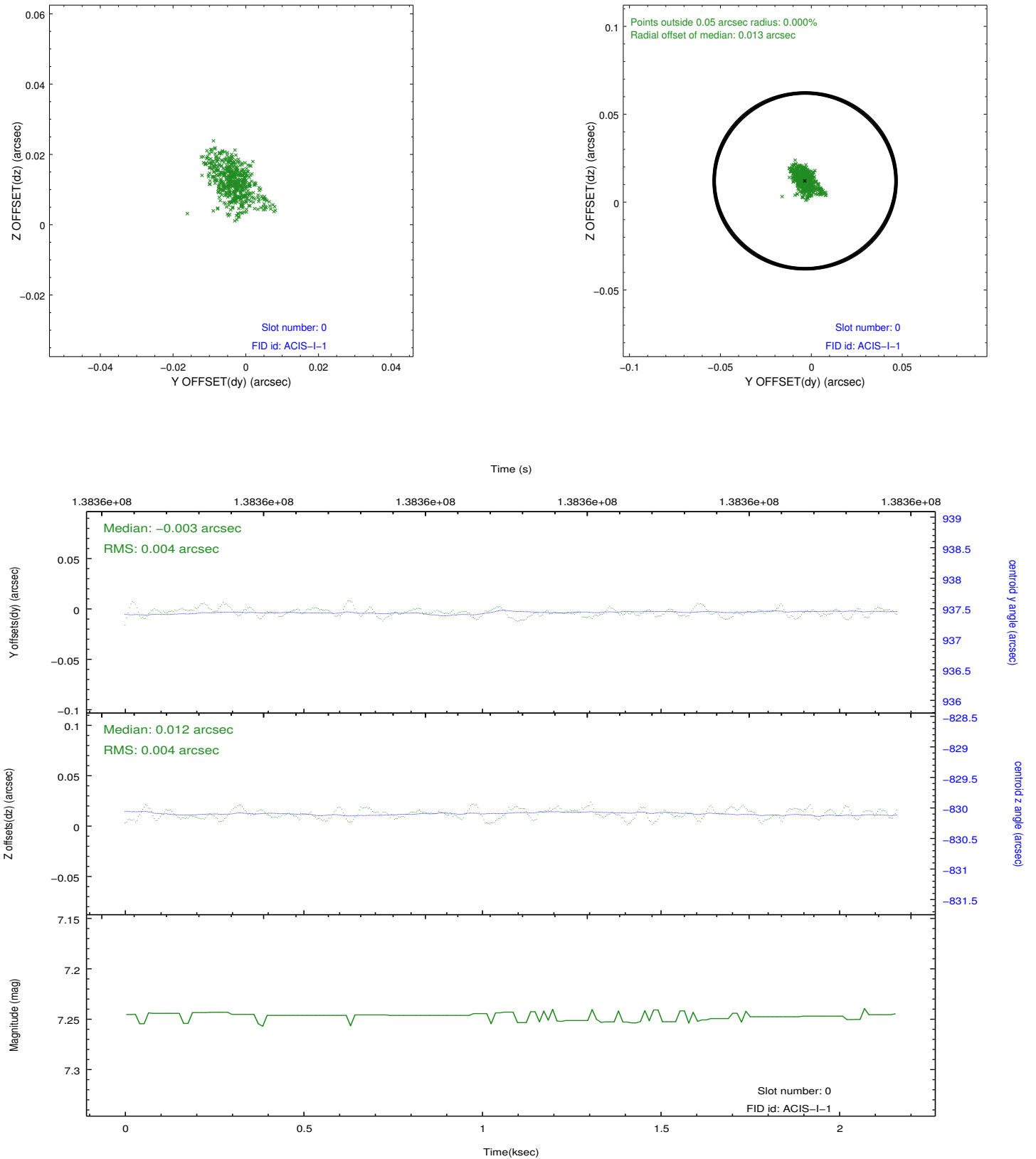


2.4.5 Slot 7

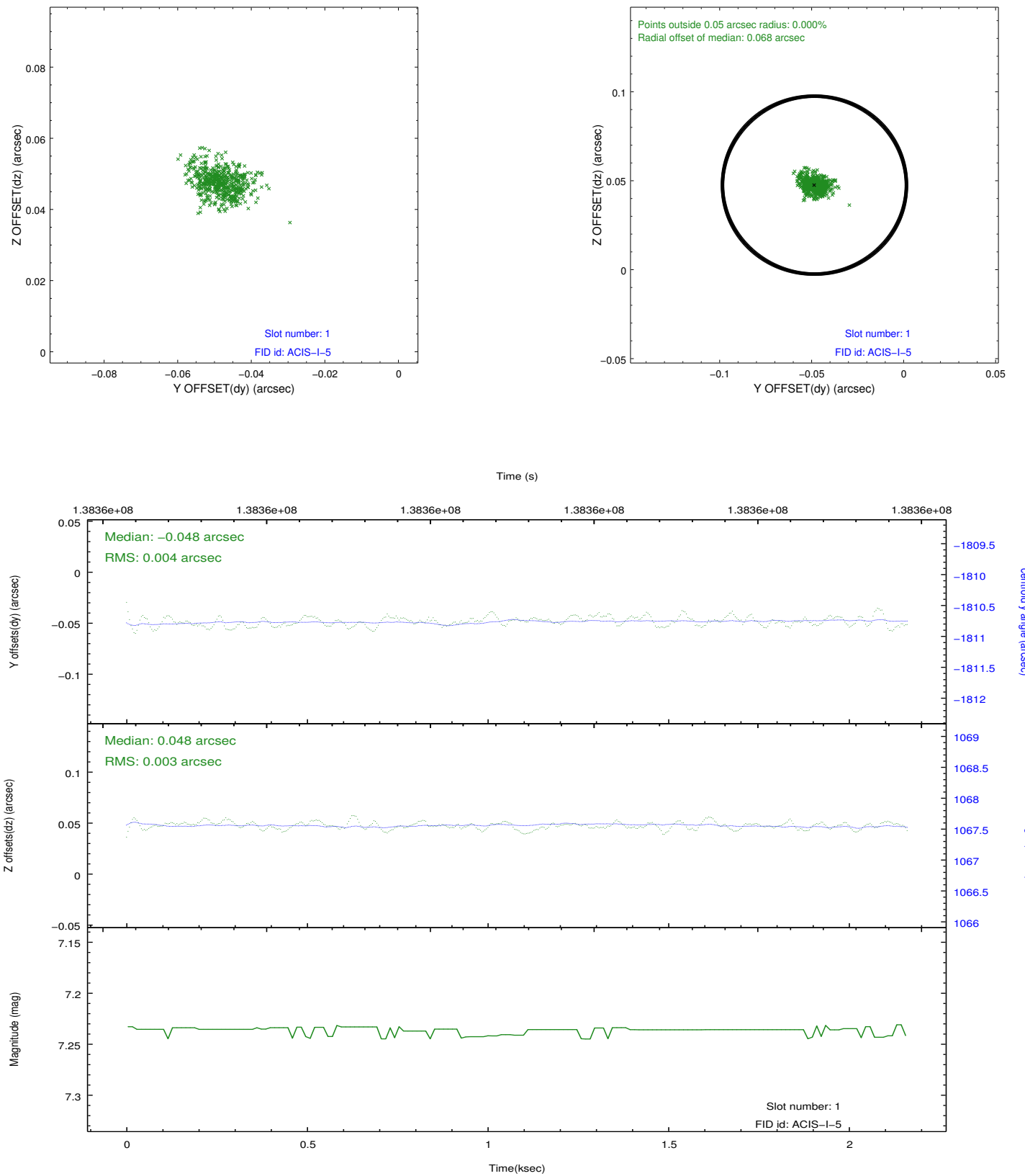


2.5 FID Slots

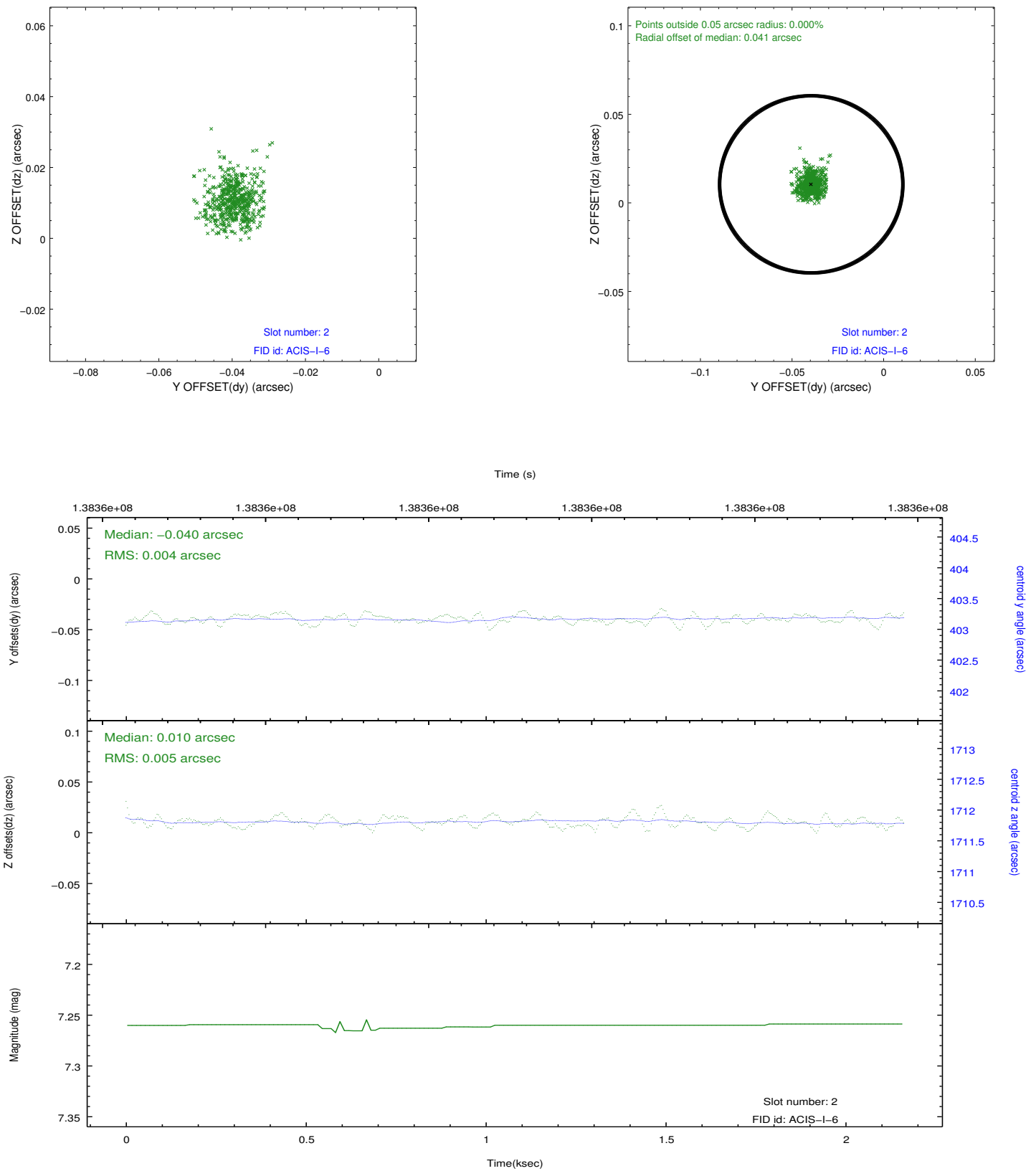
2.5.1 Slot 0



2.5.2 Slot 1



2.5.3 Slot 2



A Summary

A.1 Status

V&V Scientist	Jen Lauer
V&V Date (YYYY-MM-DD)	2012.10.17
V&V Edition	1
V&V Disposition and Status	OK
V&V Charge Time	1.756

A.2 Comments