

V&V Reference Report

L2 ASCDS Version : 8.4.5

Observation 3231 - L2 Version 3
Chandra X-Ray Center

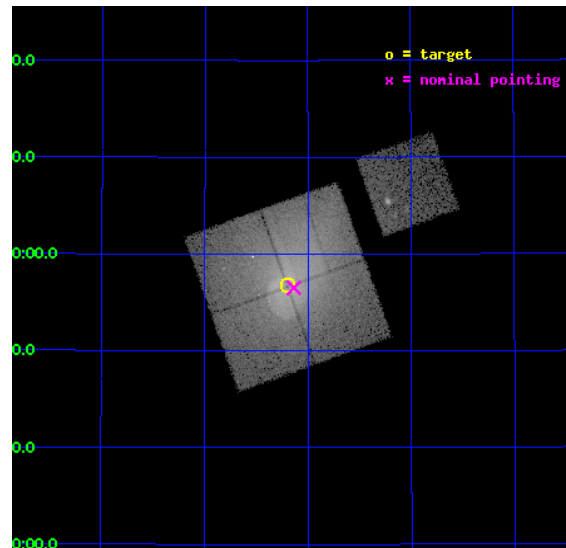
L2 Processing Date : Oct 4 2012

Contents

1	Front	2
2	OBI	3
2.1	OBI	3
2.1.1	Images	3
2.1.2	Bias	3
2.1.3	Parameters	4
2.1.4	Events	4
2.2	Compared Parameters	5
2.3	Aspect	6
2.4	Star Slots	9
2.4.1	Slot 3	9
2.4.2	Slot 4	10
2.4.3	Slot 5	11
2.4.4	Slot 6	12
2.4.5	Slot 7	13
2.5	FID Slots	14
2.5.1	Slot 0	14
2.5.2	Slot 1	15
2.5.3	Slot 2	16
A	Summary	17
A.1	Status	17
A.2	Comments	17

1 Front

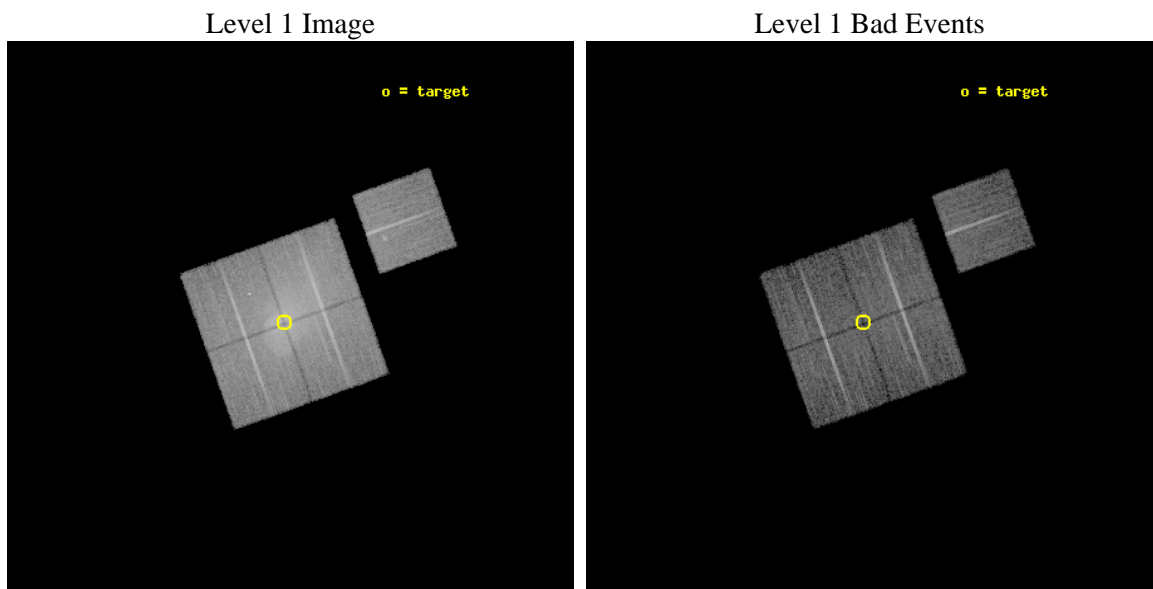
seq_num	800231	Sequence number
obs_id	3231	Observation id
title	A STUDY OF MERGER SIGNATURES IN NEARBY GALAXY CLUSTERS: CONSTRAINTS ON ICM PHYSICS AND STRUCTURE FORMATION SCENARIOS	Proposal title
observer	Dr Joseph Mohr	Principal investigator
object	ABELL 2319	Source name
dtcycle	0	
cycle	P	events from which exps? Prim/Second/Both
ra_targ	290.3	Observer's specified target RA [deg]
dec_targ	43.945472	Observer's specified target Dec [deg]
ra_nom	290.28369513277	Nominal RA [deg]
dec_nom	43.941894619077	Nominal Dec [deg]
roll_nom	70.365402491909	Nominal Roll [deg]
revision	3	Processing version of data
ontime	14616.499971896	Sum of GTIs [s]
livetime	14425.524639253	Livetime [s]
ontime0	14616.499971896	Sum of GTIs [s]
ontime1	14616.499971896	Sum of GTIs [s]
ontime2	14610.218021482	Sum of GTIs [s]
ontime3	14616.499971896	Sum of GTIs [s]
ontime6	14616.499971896	Sum of GTIs [s]
l2events	198572	Number of level 2 events



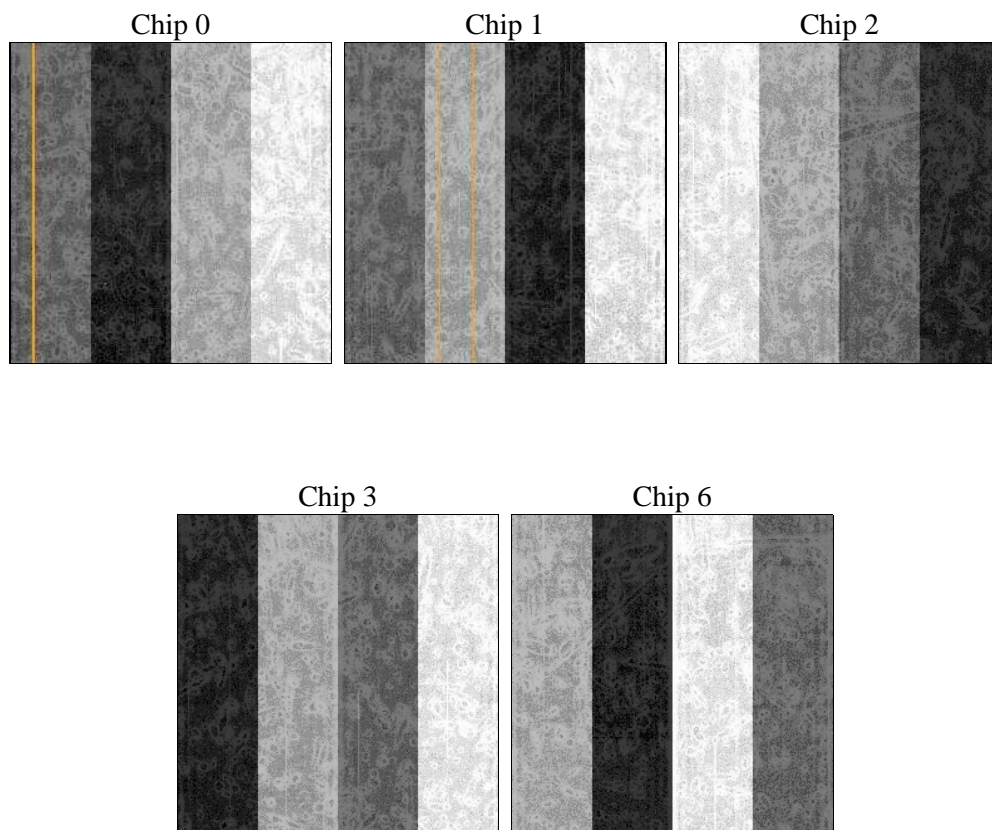
2 OBI

2.1 OBI

2.1.1 Images



2.1.2 Bias



2.1.3 Parameters

obi_num	2	Obi number	sched_exp_time	14500.000000	[s] Scheduled observation exposure time
ascdsver	8.4.5	Processing system revision	ontime	14616.499971896	Sum of GTIs [s]
caldsver	4.5.2	 	ontime0	14616.499971896	Sum of GTIs [s]
date	2012-10-04T11:30:54	Date and time of file creation	ontime1	14616.499971896	Sum of GTIs [s]
revision	3	Processing version of data	ontime2	14610.218021482	Sum of GTIs [s]
			ontime3	14616.499971896	Sum of GTIs [s]
			ontime6	14616.499971896	Sum of GTIs [s]
			l1events	591790	Number of level 1 events

2.1.4 Events

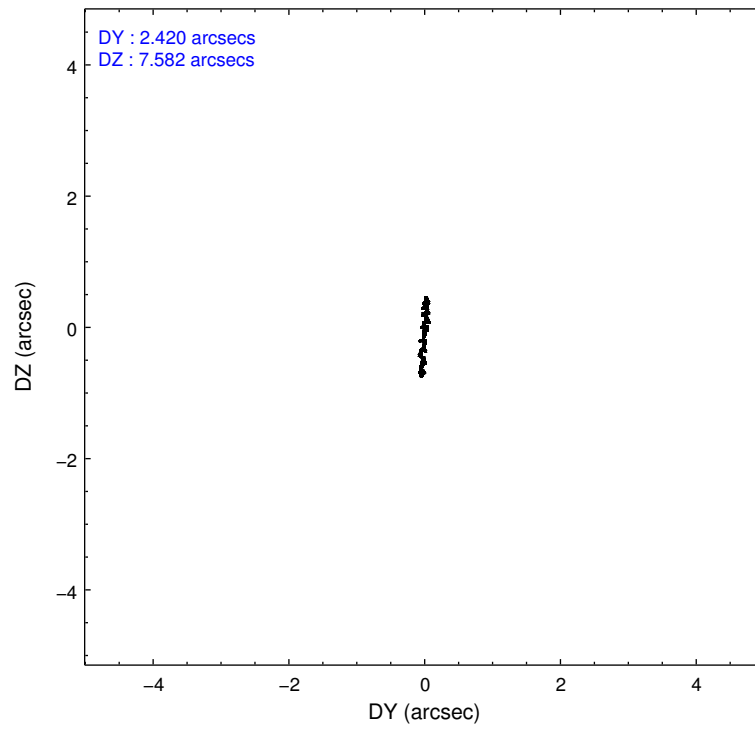
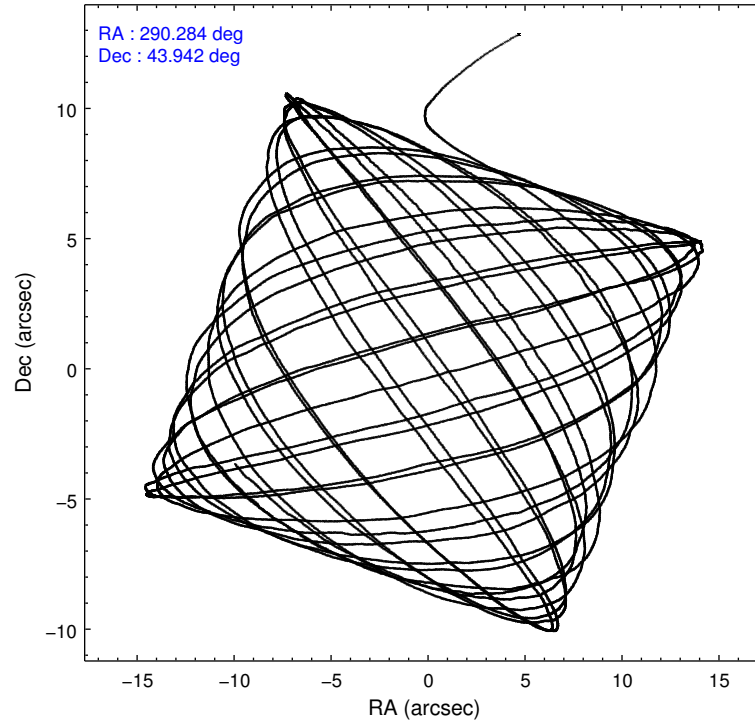
	ccd 0	ccd 1	ccd 2	ccd 3	ccd 6
level 1 events	118115	114669	151487	117383	90136
rejected events	69169	72110	79454	76657	77792
rejected %	58%	62%	52%	65%	86%

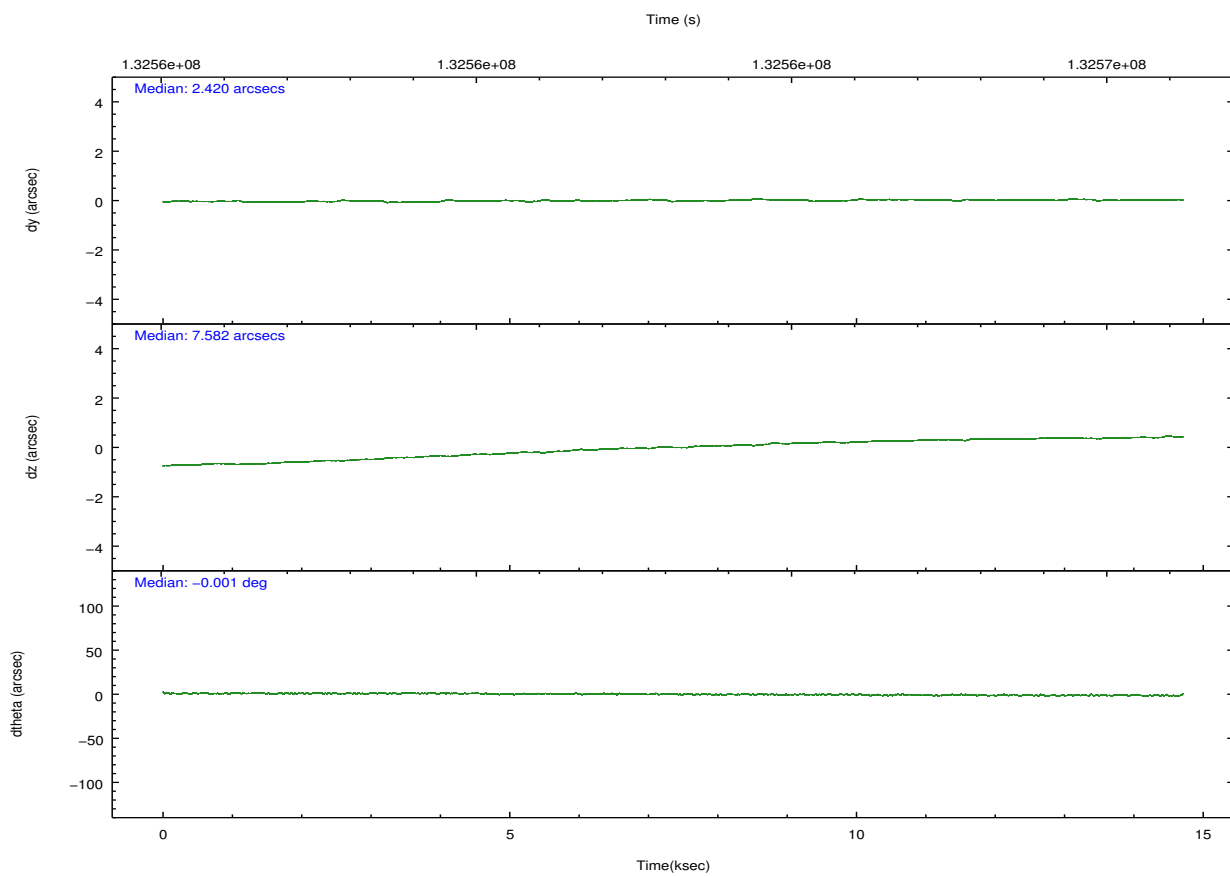
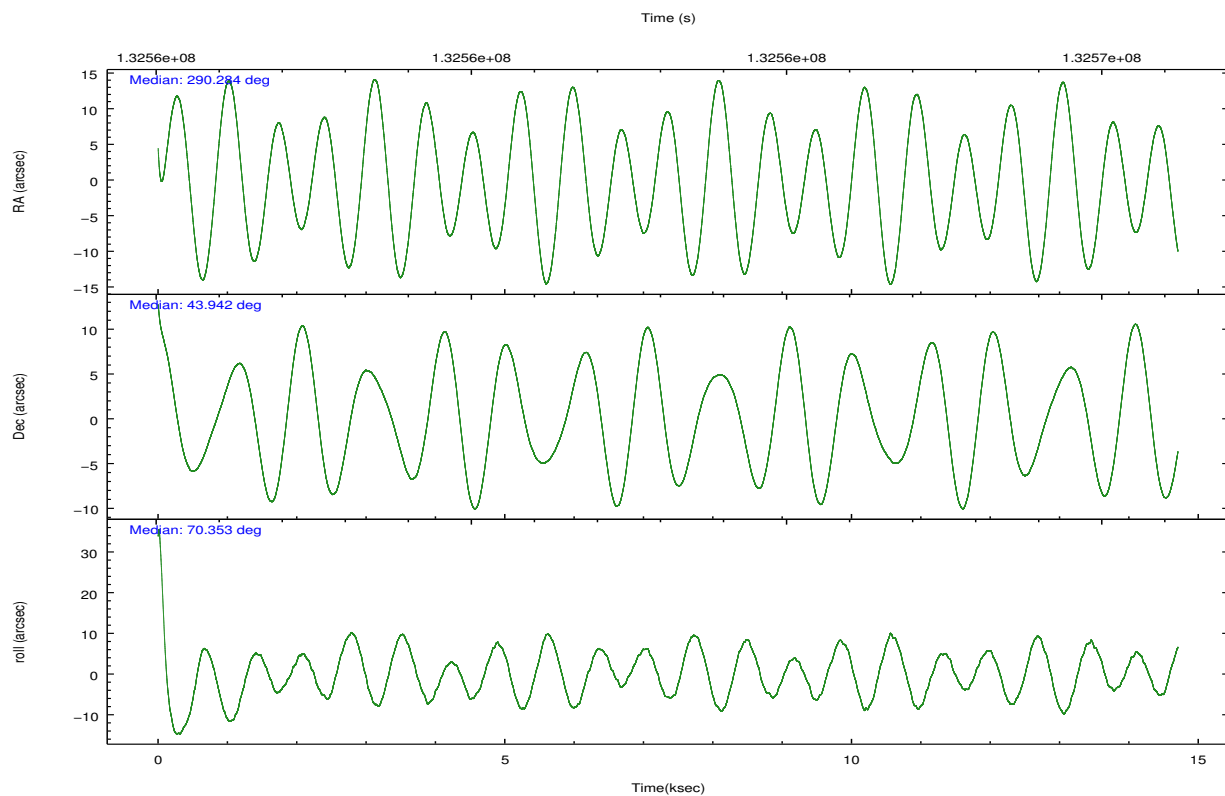
	ccd 0	ccd 1	ccd 2	ccd 3	ccd 6
grade 0 events	35681	30289	54374	29352	6227
	30%	26%	35%	25%	6%
grade 1 events	194	147	271	154	50
	0%	0%	0%	0%	0%
grade 2 events	6104	5298	8570	5148	2116
	5%	4%	5%	4%	2%
grade 3 events	2235	2095	2858	1815	1109
	1%	1%	1%	1%	1%
grade 4 events	2177	2069	2914	1898	1044
	1%	1%	1%	1%	1%
grade 5 events	2902	2999	2625	3092	3011
	2%	2%	1%	2%	3%
grade 6 events	2758	2821	3332	2526	1851
	2%	2%	2%	2%	2%
grade 7 events	66064	68951	76543	73398	74728
	55%	60%	50%	62%	82%

2.2 Compared Parameters

Parameter	Planned	Actual	Parameter	Planned	Actual
Instrument	ACIS	ACIS	Obspar format version number	7	7
Detector	ACIS-01236	ACIS-01236	Obspar file type	PREDICTED	ACTUAL
Grating	NONE	NONE	Obspar update status	NONE	UPDATED
Data mode	VFAINT	VFAINT	Number of optional ACIS chips dropped	0	0
Observation mode	POINTING	POINTING	On-chip summing requested	N	N
[deg] Pointing RA	290.290612	290.2836951327683	Subarray requested	NONE	NONE
[deg] Pointing Dec	43.914957	43.9418946190772	Alternating exposures requested	N	N
[deg] Pointing Roll	70.151887	70.36540249190894	[s] Primary exposure time	0.000000	3.1
[mm] SIM focus pos	-0.782348	-0.7809083437167272			
[mm] SIM defocus	0	0.001439871863259334			
[mm] SIM translation stage pos	-233.592463	-233.5874344608287			
[mm] SIM translation stage offset	0	-0.005018542100998502			
[s] Observation start time (MET)	132555975.184000	132554993.26693			
Observation start date	2002-03-15T05:05:11	2002-03-15T04:49:53			
[s] Observation end time (MET)	132570475.184000	132570824.90507			
Observation end date	2002-03-15T09:06:51	2002-03-15T09:13:44			
Read mode	TIMED	TIMED			

2.3 Aspect



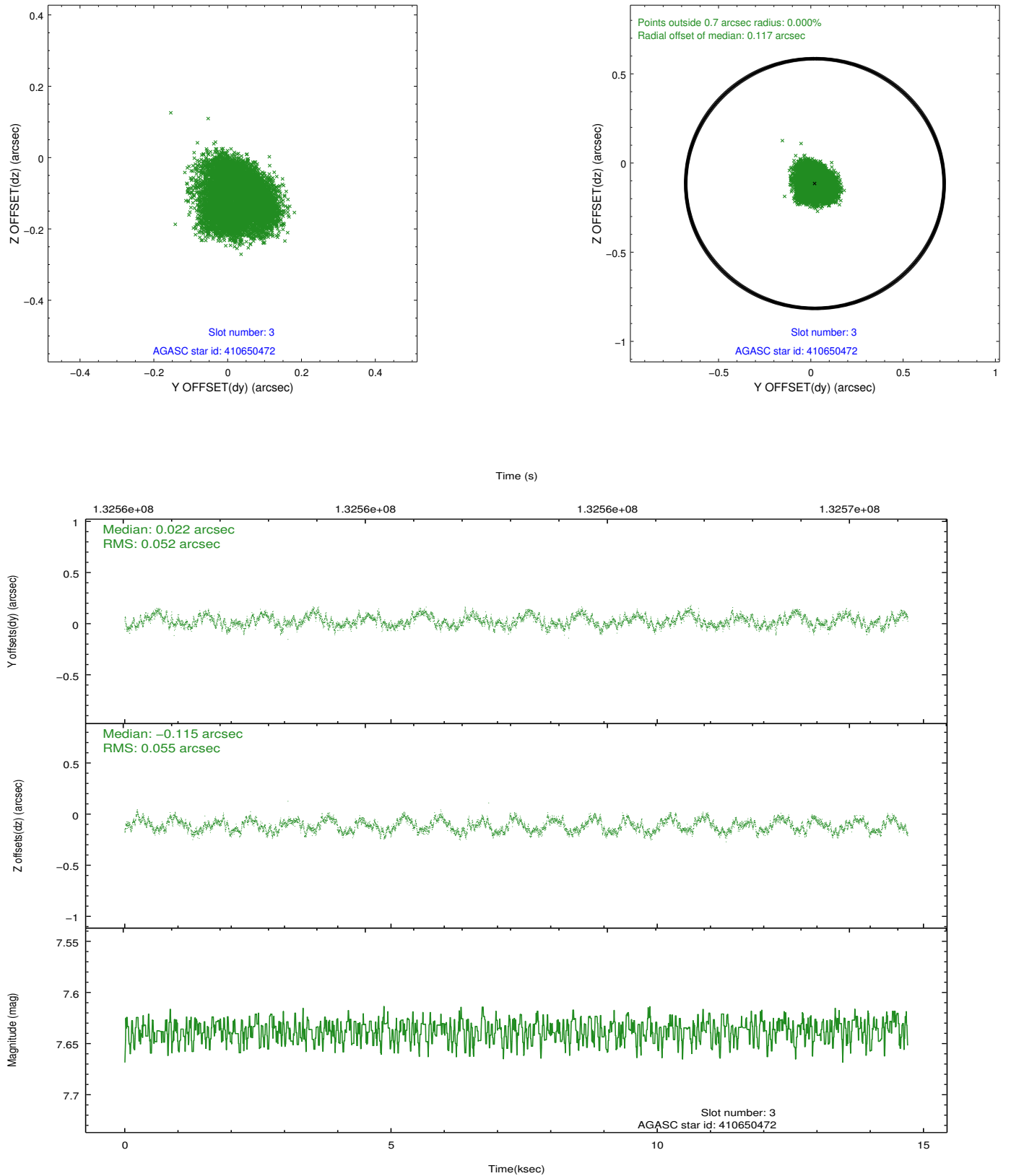


Slot Statistics

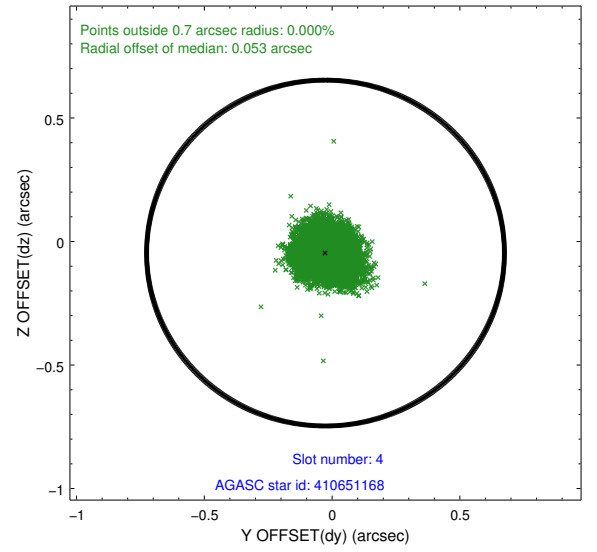
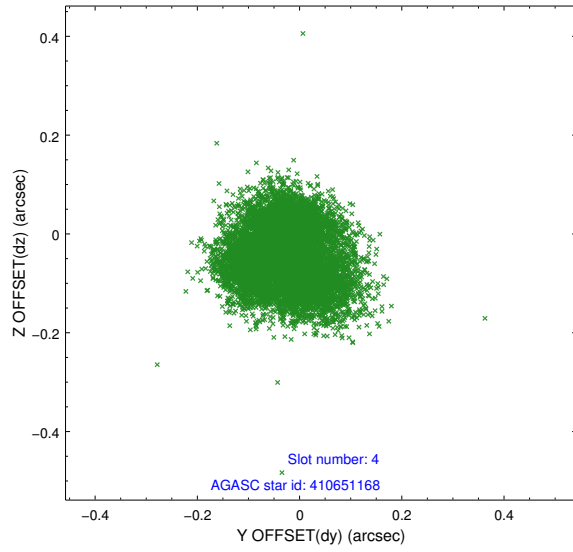
slot	status	id	mag	n_pts	med_dy	med_dz	dr1	dr2	ra	dec	mean_y	mean_z
0	FID	ACIS-I-1	7.24	3587	-0.014	0.045	0.018	0.025	0.000000	0.000000	937.36	-830.90
1	FID	ACIS-I-5	7.24	3587	-0.037	0.045	0.007	0.012	0.000000	0.000000	-1810.56	1066.49
2	FID	ACIS-I-6	7.26	3587	-0.040	-0.021	0.013	0.025	0.000000	0.000000	402.59	1711.24
3	GUIDE	410650472	7.64	7175	0.022	-0.115	0.083	0.120	289.959245	43.556270	-1506.82	375.51
4	GUIDE	410651168	8.72	7172	-0.026	-0.047	0.098	0.144	289.821163	43.791099	-831.11	997.73
5	GUIDE	412361592	8.60	7162	-0.047	0.056	0.102	0.186	290.903818	43.891292	465.46	-1522.40
6	GUIDE	412362984	8.99	7172	0.032	0.144	0.108	0.167	290.197826	43.582253	-1208.88	-178.69
7	GUIDE	410649888	9.65	7166	0.023	-0.041	0.187	0.283	289.831705	44.006738	-90.27	1231.52

2.4 Star Slots

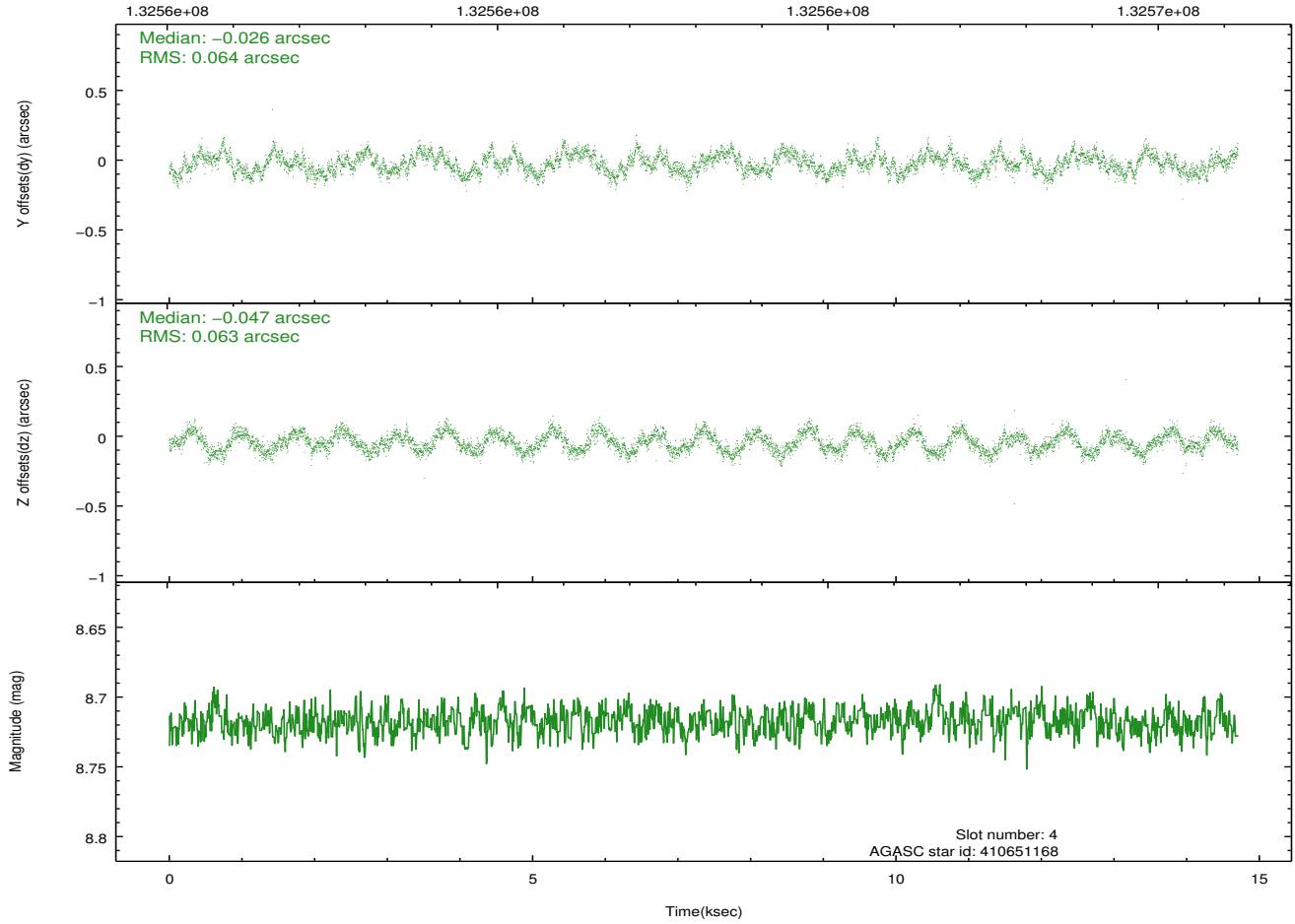
2.4.1 Slot 3



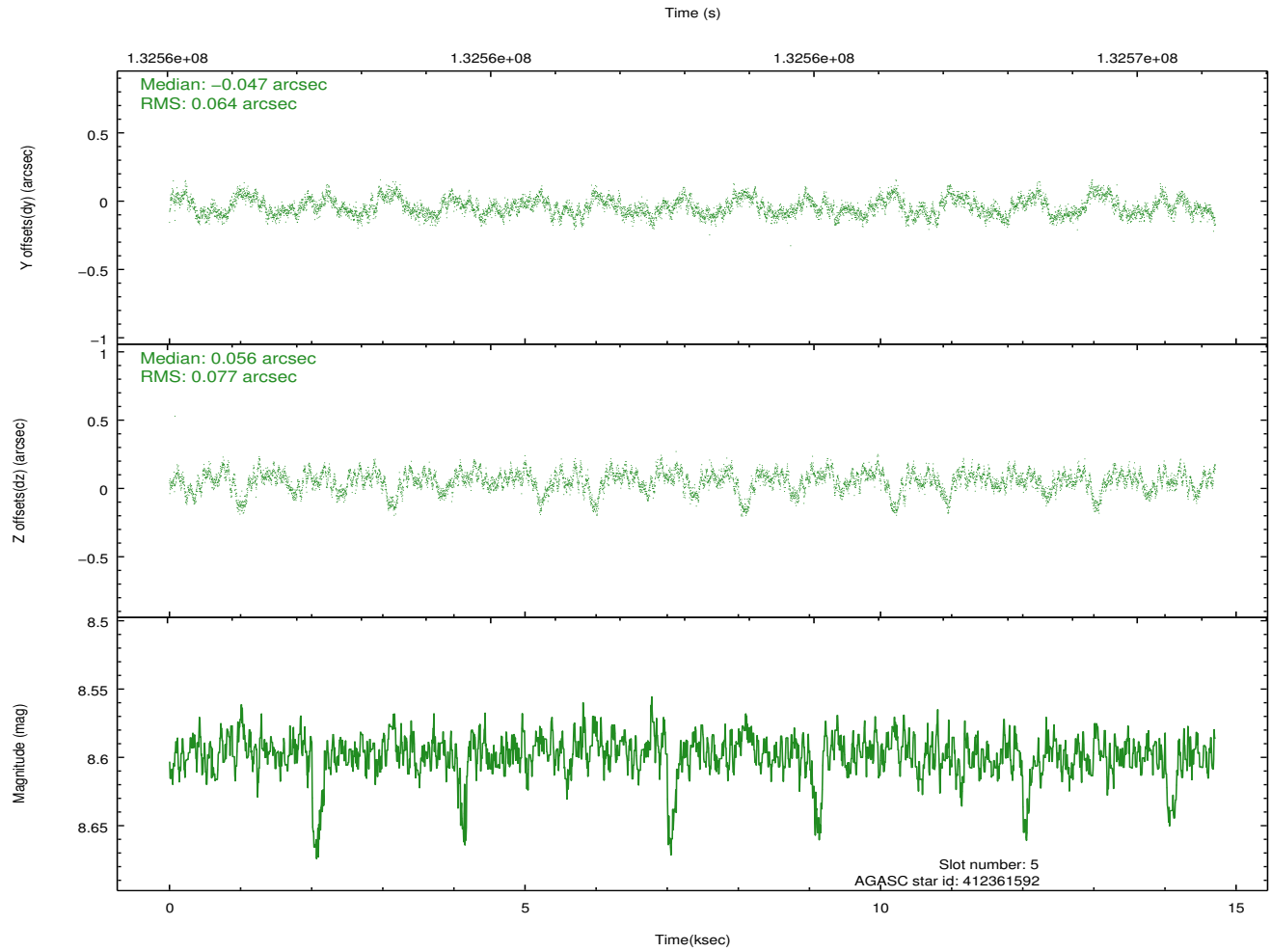
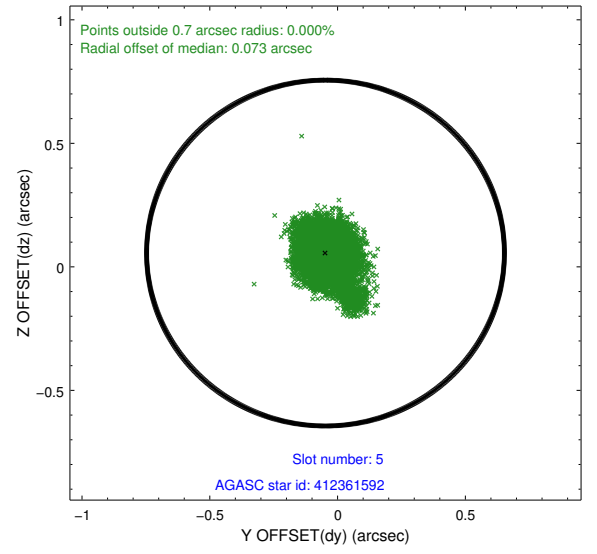
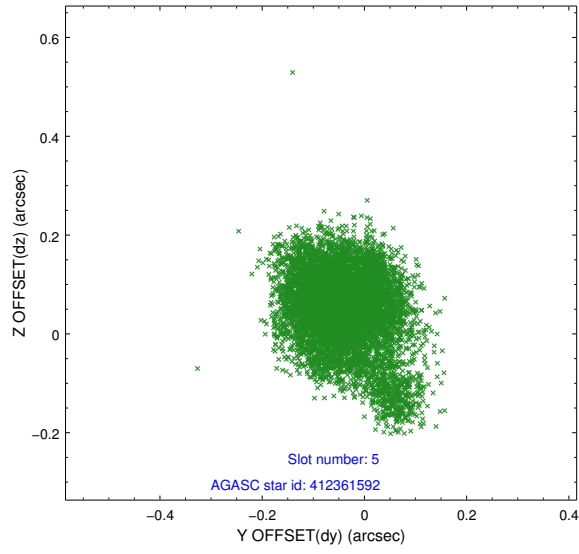
2.4.2 Slot 4



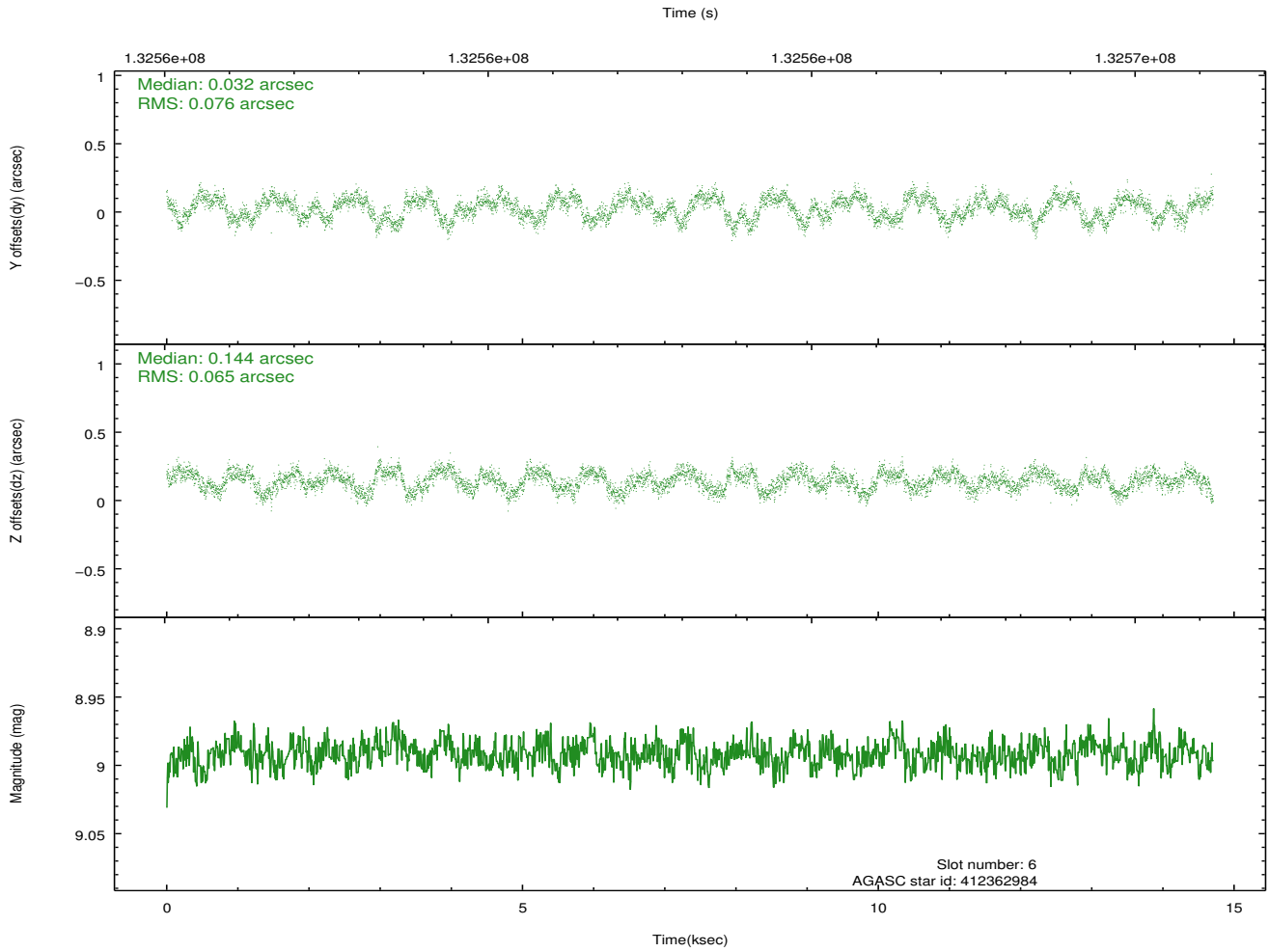
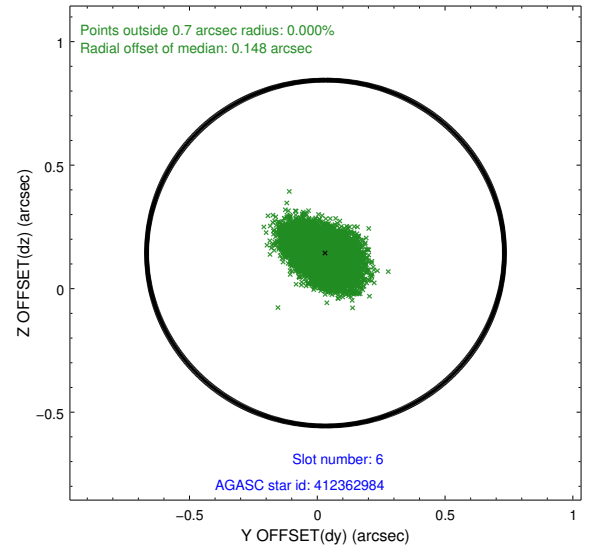
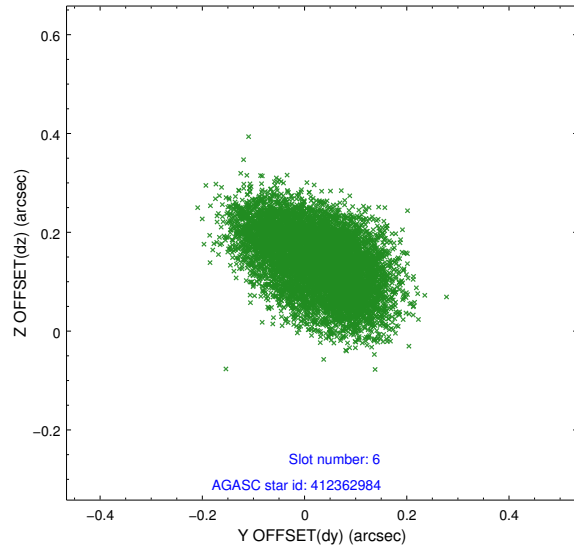
Time (s)



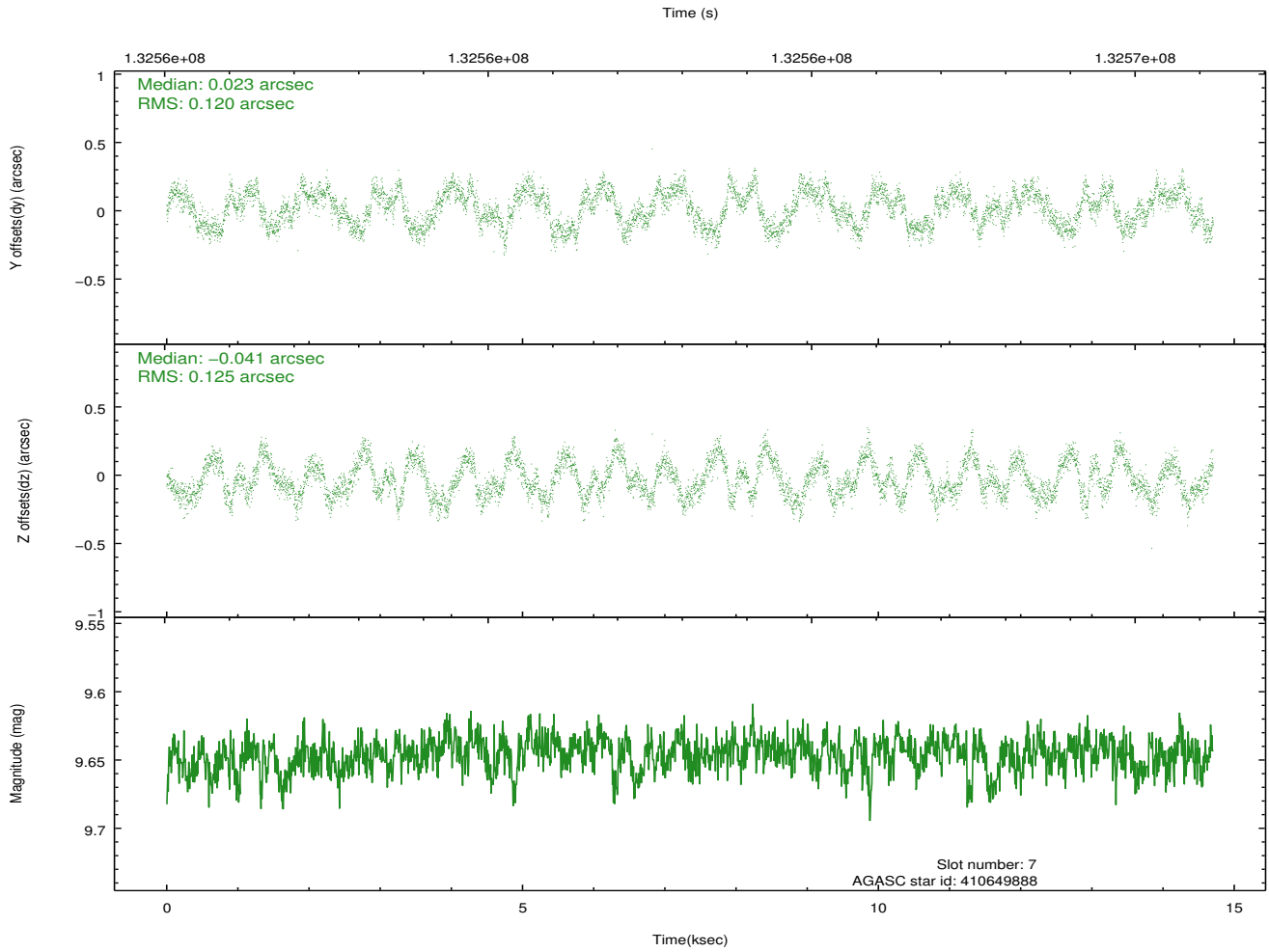
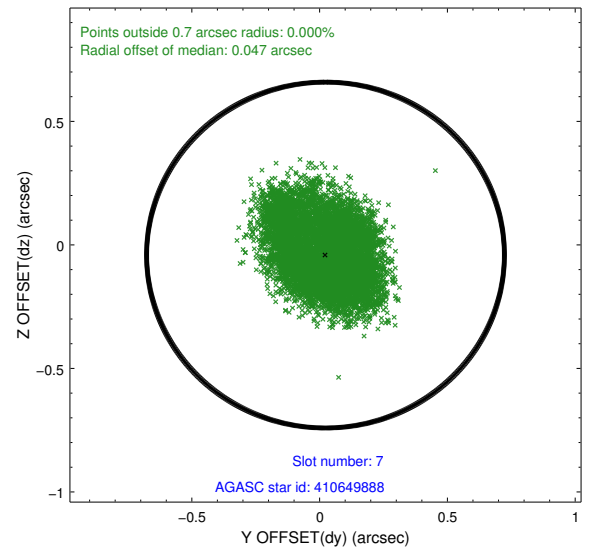
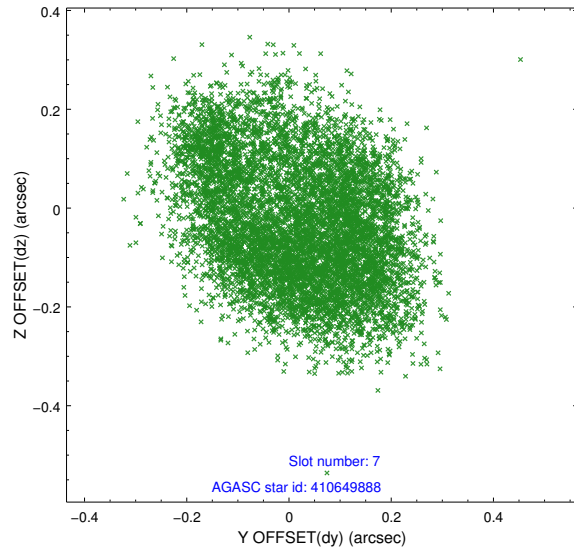
2.4.3 Slot 5



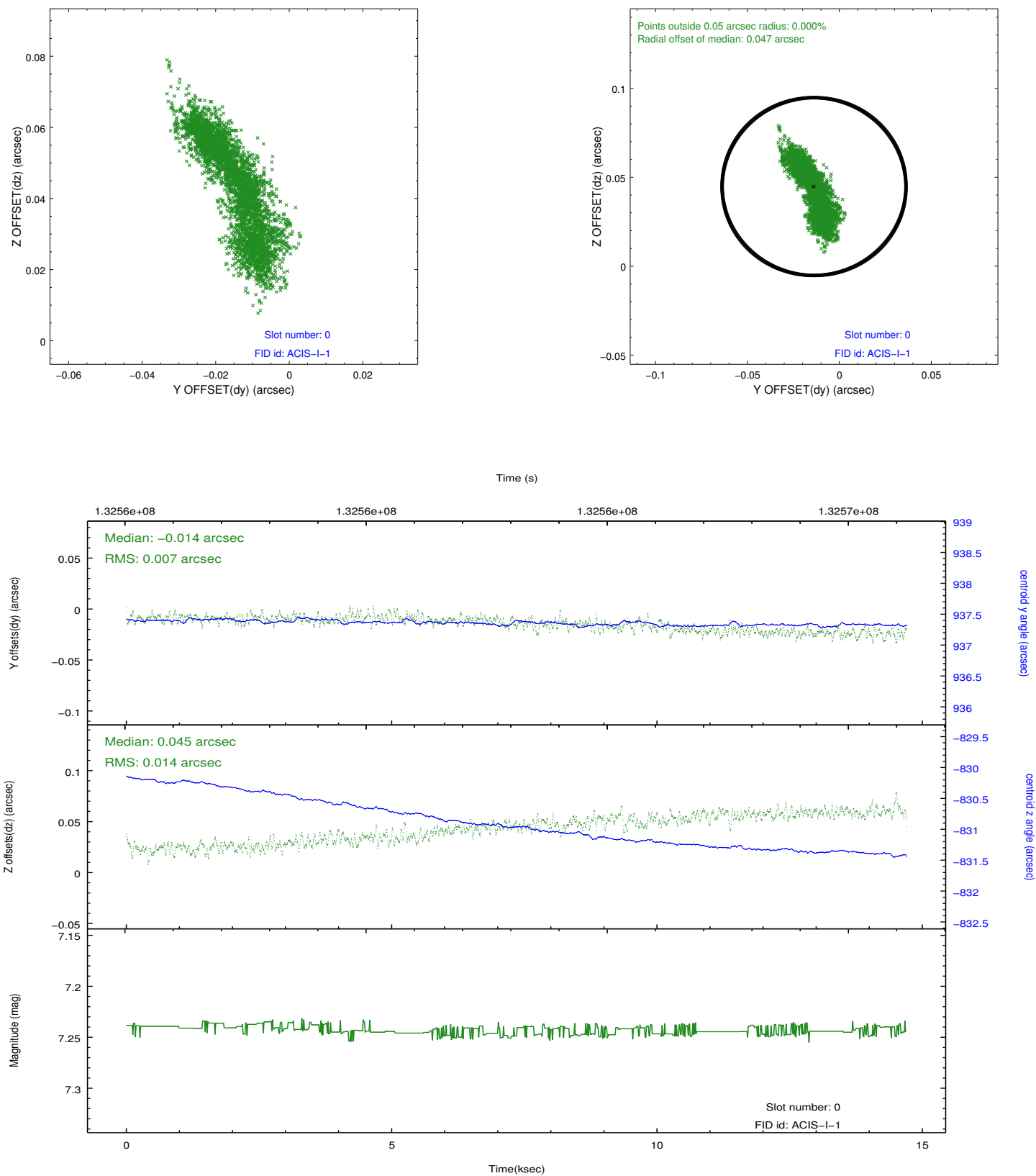
2.4.4 Slot 6



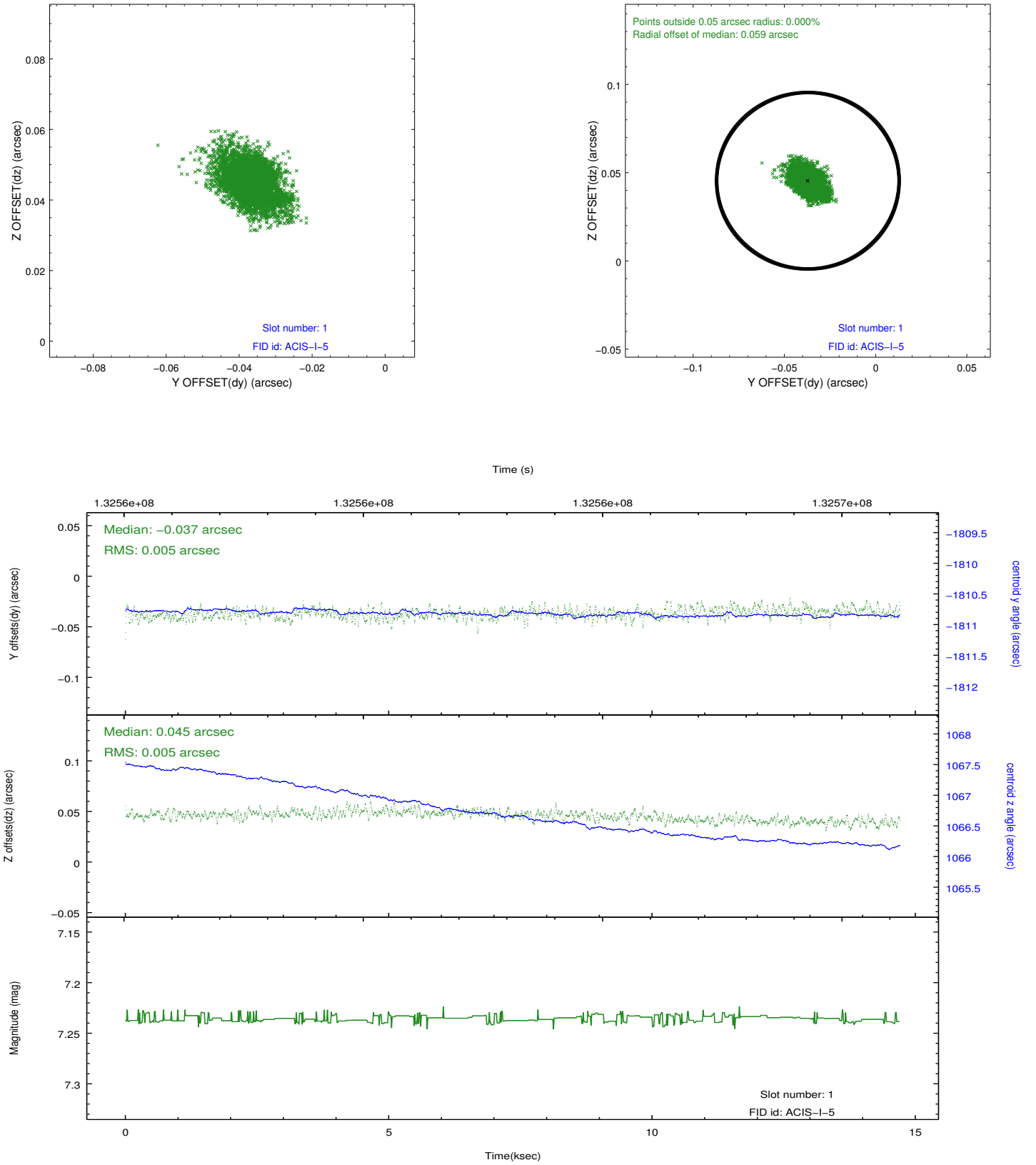
2.4.5 Slot 7



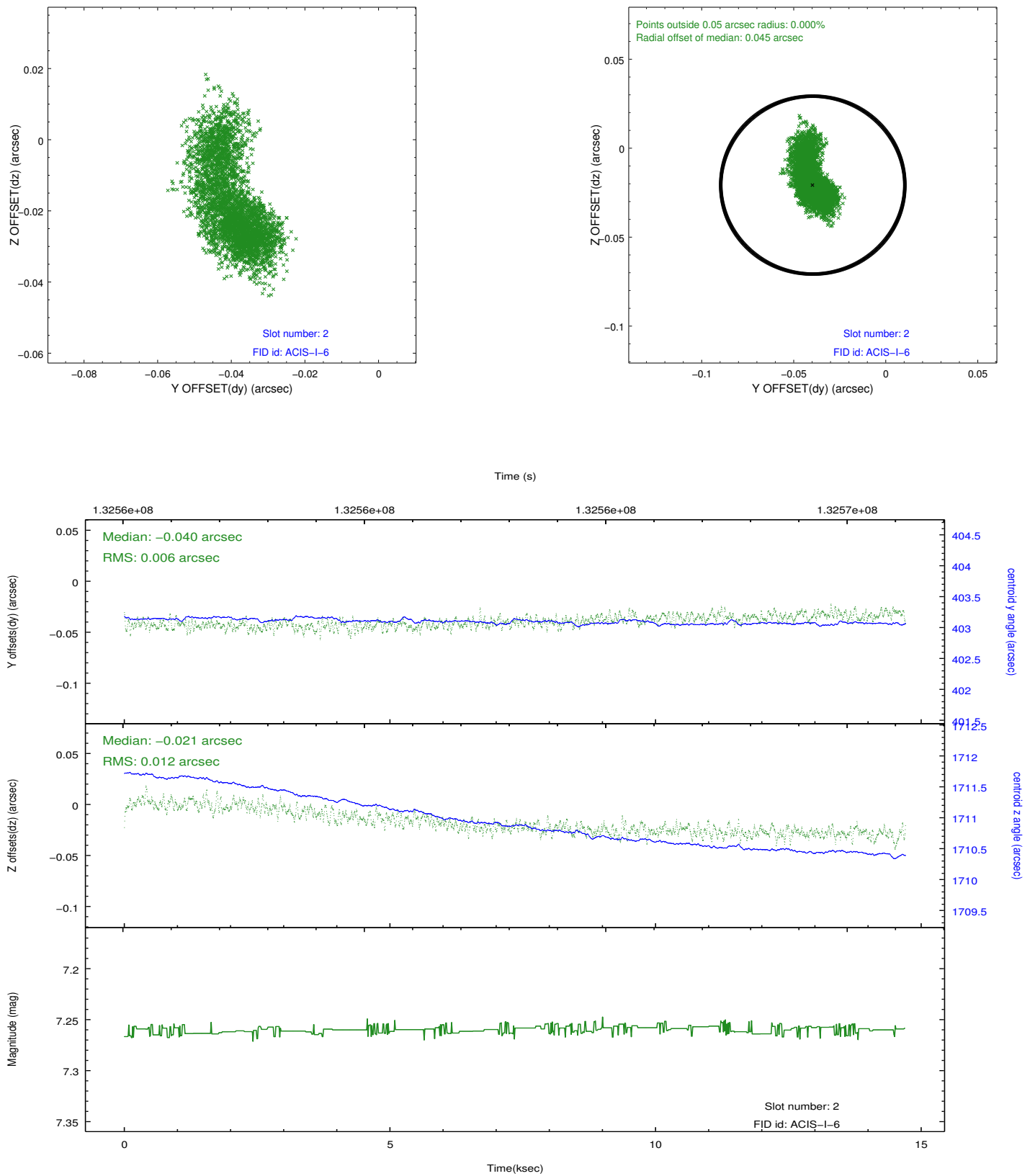
2.5.1 Slot 0



2.5.2 Slot 1



2.5.3 Slot 2



A Summary

A.1 Status

V&V Scientist	Joy Nichols
V&V Date (YYYY-MM-DD)	2012.10.24
V&V Edition	1
V&V Disposition and Status	OK
V&V Charge Time	14.619

A.2 Comments

Target coordinates designated by observer fall in the gap between the CCD chips. However, the target coordinates indicate the center position of the cluster. The cluster is very extended and essentially all of it is detected on the CCDs.