

V&V Reference Report

L2 ASCDS Version : 7.6.8.1

Observation 3231 - L2 Version 001
Chandra X-Ray Center

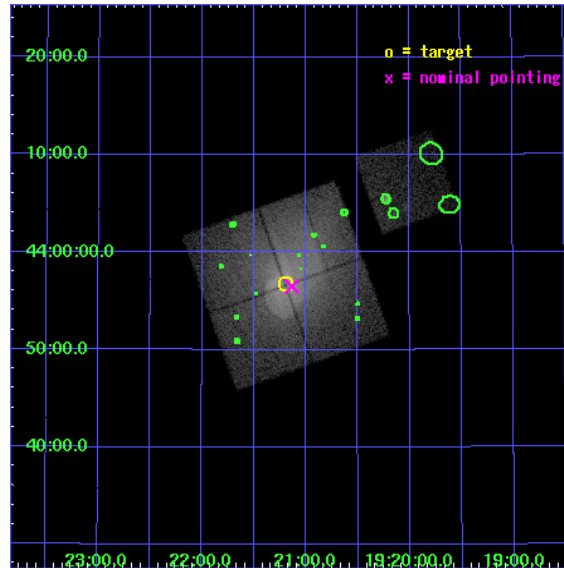
L2 Processing Date : Sep 8 2006

Contents

| | | |
|----------|-------------------------------|-----------|
| 1 | Front | 2 |
| 2 | OBI | 3 |
| 2.1 | OBI | 3 |
| 2.1.1 | Images | 3 |
| 2.1.2 | Bias | 3 |
| 2.1.3 | Parameters | 4 |
| 2.1.4 | Events | 4 |
| 2.2 | Compared Parameters | 5 |
| 2.3 | Aspect | 6 |
| 2.4 | Star Slots | 9 |
| 2.4.1 | Slot 3 | 9 |
| 2.4.2 | Slot 4 | 10 |
| 2.4.3 | Slot 5 | 11 |
| 2.4.4 | Slot 6 | 12 |
| 2.4.5 | Slot 7 | 13 |
| 2.5 | FID Slots | 14 |
| 2.5.1 | Slot 0 | 14 |
| 2.5.2 | Slot 1 | 15 |
| 2.5.3 | Slot 2 | 16 |
| 3 | Point Sources | 17 |
| A | Summary | 18 |
| A.1 | Status | 18 |
| A.2 | Comments | 18 |

1 Front

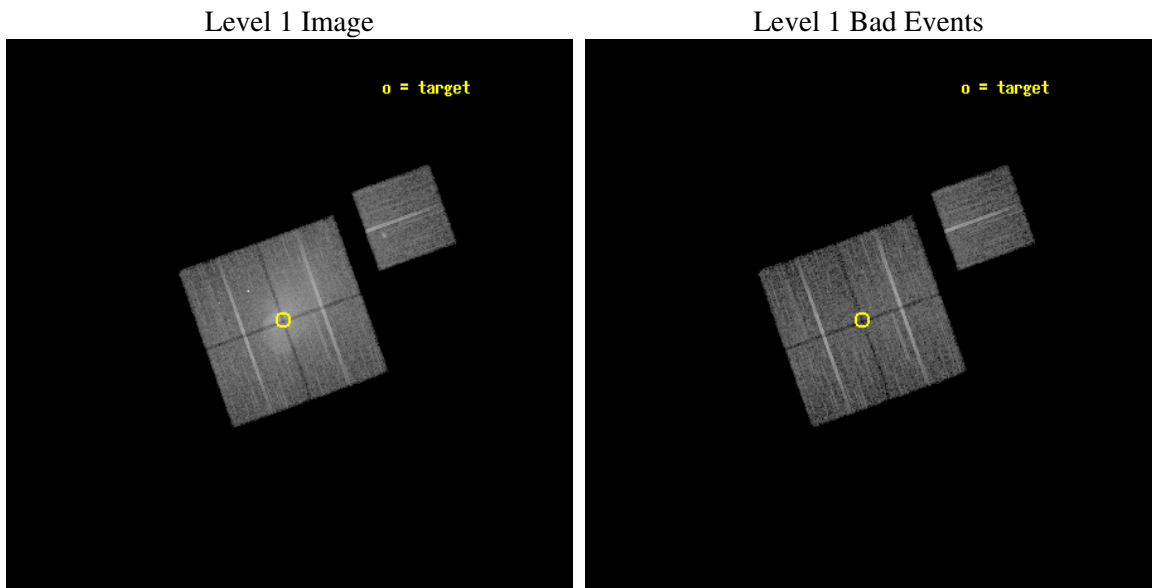
| | |
|----------|--|
| seq_num | 800231 |
| obs_id | 3231 |
| title | A STUDY OF MERGER SIGNATURES IN NEARBY GALAXY CLUSTERS: CONSTRAINTS ON ICM PHYSICS AND STRUCTURE FORMATION SCENARIOS |
| observer | DR. JOSEPH MOHR |
| object | ABELL 2319 |
| dtcycle | 0 |
| cycle | P |
| ra_targ | 290.3 |
| dec_targ | 43.945472 |
| ra_nom | 290.28369513326 |
| dec_nom | 43.941894626723 |
| roll_nom | 70.36540248996 |
| revision | 2 |
| ontime | 14616.499971896 |
| livetime | 14425.524639253 |
| ontime0 | 14616.499971896 |
| ontime1 | 14616.499971896 |
| ontime2 | 14610.218021482 |
| ontime3 | 14616.499971896 |
| ontime6 | 14616.499971896 |
| l2events | 198645 |



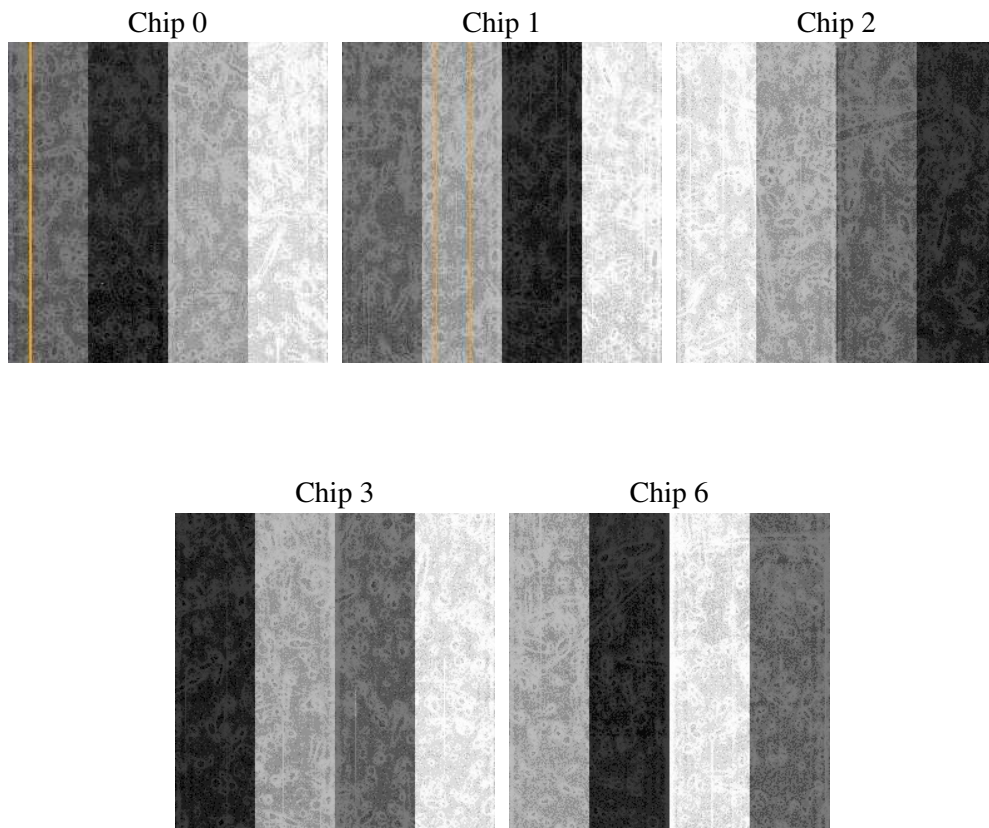
2 OBI

2.1 OBI

2.1.1 Images



2.1.2 Bias



2.1.3 Parameters

| | |
|----------|---------------------|
| obi_num | 2 |
| ascdsver | 7.6.8.1 |
| caldsver | 3.2.3 |
| date | 2006-09-08T05:12:40 |
| revision | 2 |

| | |
|----------------|-----------------|
| sched_exp_time | 14500.000000 |
| ontime | 14621.357832387 |
| ontime0 | 14621.357832387 |
| ontime1 | 14621.357832387 |
| ontime2 | 14615.075852051 |
| ontime3 | 14621.357802466 |
| ontime6 | 14621.357832387 |
| l1events | 591790 |

2.1.4 Events

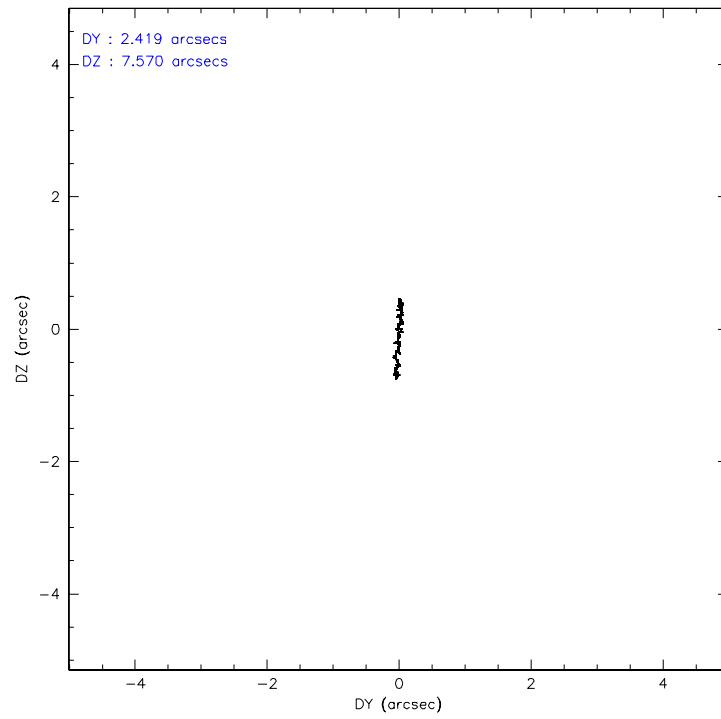
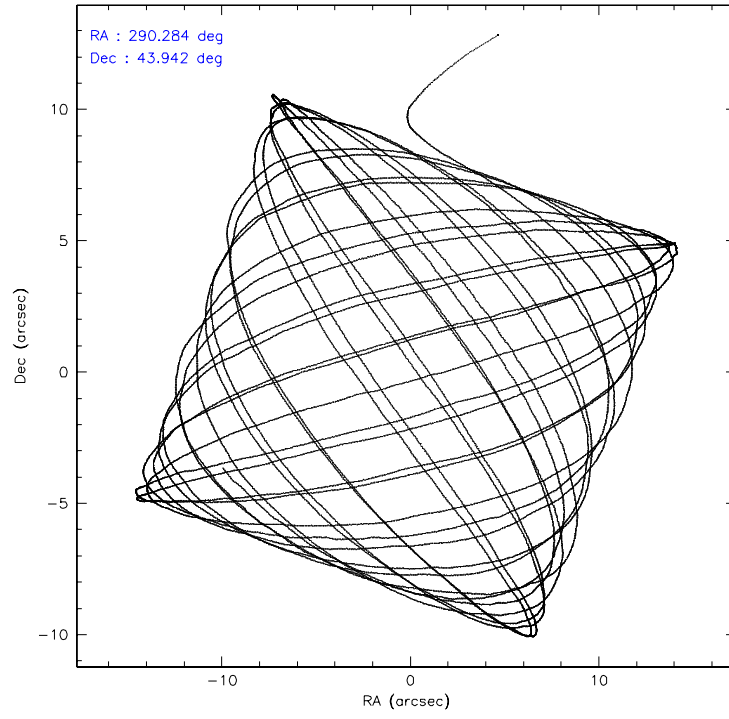
| | ccd 0 | ccd 1 | ccd 2 | ccd 3 | ccd 6 |
|-----------------|--------|--------|--------|--------|-------|
| level 1 events | 118115 | 114669 | 151487 | 117383 | 90136 |
| rejected events | 69179 | 72116 | 79482 | 76667 | 77795 |
| rejected % | 58% | 62% | 52% | 65% | 86% |

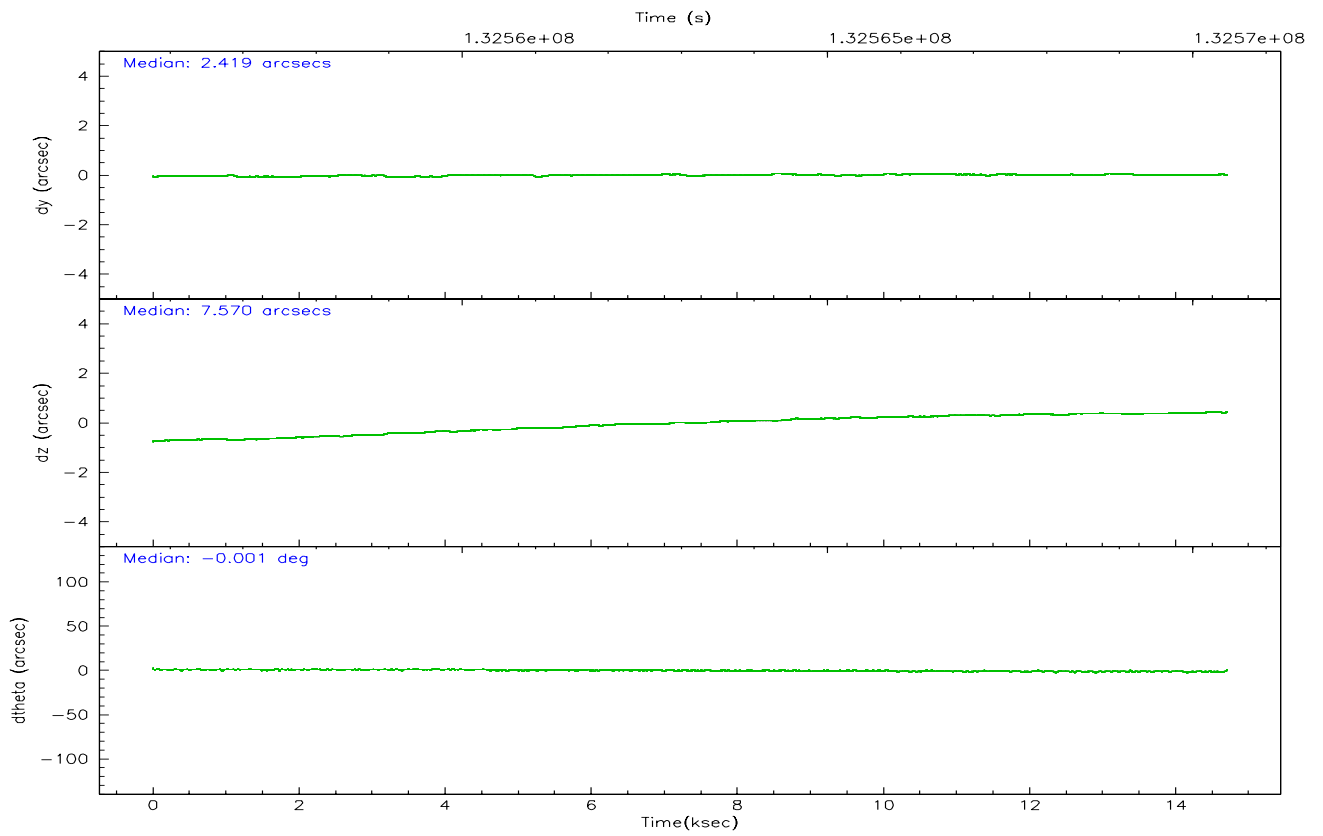
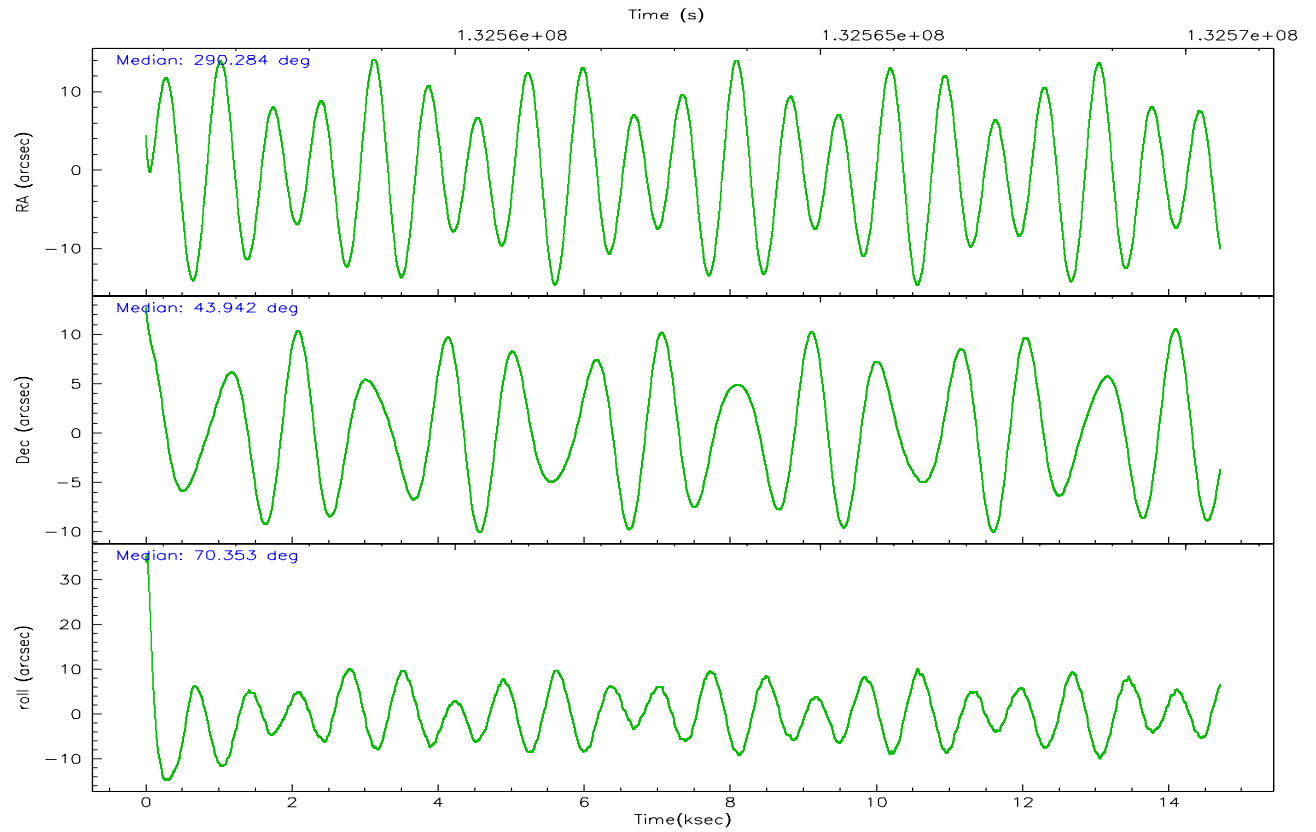
| | ccd 0 | ccd 1 | ccd 2 | ccd 3 | ccd 6 |
|----------------|-------|-------|-------|-------|-------|
| grade 0 events | 35681 | 30290 | 54375 | 29352 | 6227 |
| | 30% | 26% | 35% | 25% | 6% |
| grade 1 events | 194 | 147 | 271 | 154 | 50 |
| | 0% | 0% | 0% | 0% | 0% |
| grade 2 events | 6104 | 5297 | 8569 | 5148 | 2116 |
| | 5% | 4% | 5% | 4% | 2% |
| grade 3 events | 2235 | 2095 | 2858 | 1815 | 1109 |
| | 1% | 1% | 1% | 1% | 1% |
| grade 4 events | 2177 | 2069 | 2914 | 1898 | 1044 |
| | 1% | 1% | 1% | 1% | 1% |
| grade 5 events | 2902 | 2999 | 2625 | 3092 | 3012 |
| | 2% | 2% | 1% | 2% | 3% |
| grade 6 events | 2758 | 2821 | 3332 | 2526 | 1850 |
| | 2% | 2% | 2% | 2% | 2% |
| grade 7 events | 66064 | 68951 | 76543 | 73398 | 74728 |
| | 55% | 60% | 50% | 62% | 82% |

2.2 Compared Parameters

| Parameter | Planned | Actual | Parameter | Planned | Actual |
|-----------------------------------|---------------------|-----------------------|---------------------------------|-----------|---------|
| Instrument | ACIS | ACIS | Obspar format version number | 6 | 6 |
| Detector | ACIS-01236 | ACIS-01236 | Obspar file type | PREDICTED | ACTUAL |
| Grating | NONE | NONE | Obspar update status | NONE | UPDATED |
| Data mode | VFAINT | VFAINT | On-chip summing requested | N | N |
| Observation mode | POINTING | POINTING | Subarray requested | NONE | NONE |
| Pointing RA | 290.290612 | 290.2836951332619 | Alternating exposures requested | N | N |
| Pointing Dec | 43.914957 | 43.94189462672286 | Primary exposure time | 0.000000 | 3.1 |
| Pointing Roll | 70.151887 | 70.36540248995955 | | | |
| SIM focus pos (mm) | -0.782348 | -0.7809083437167272 | | | |
| SIM defocus (mm) | 0 | 0.001439871863259334 | | | |
| SIM translation stage pos (mm) | -233.592463 | -233.5874344608287 | | | |
| SIM translation stage offset (mm) | 0 | -0.005018542100998502 | | | |
| Observation start time | 132555975.184000 | 132554993.26693 | | | |
| Observation start date | 2002-03-15T05:05:11 | 2002-03-15T04:49:53 | | | |
| Observation end time | 132570475.184000 | 132570824.90507 | | | |
| Observation end date | 2002-03-15T09:06:51 | 2002-03-15T09:13:44 | | | |
| Read mode | TIMED | TIMED | | | |

2.3 Aspect



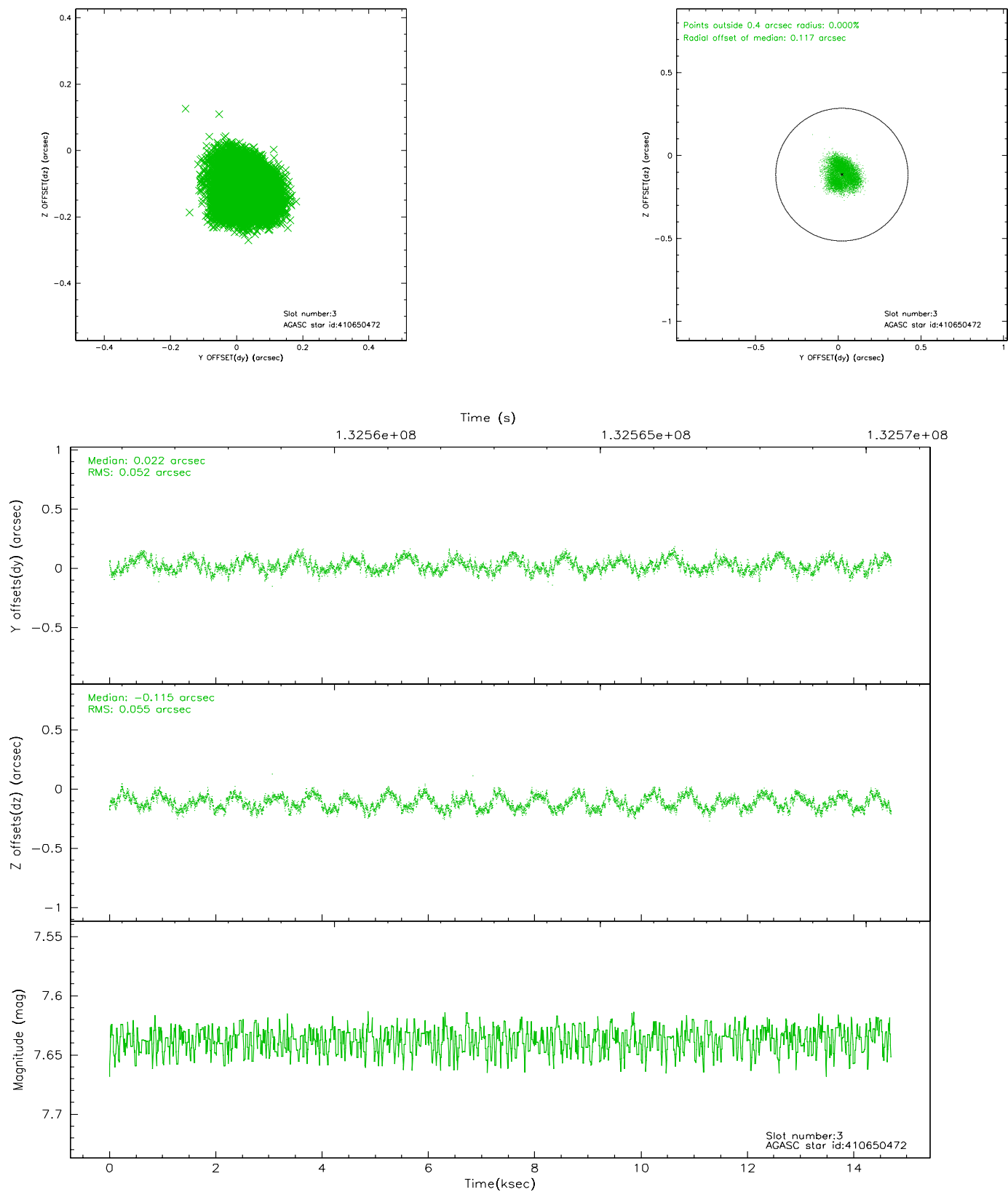


Slot Statistics

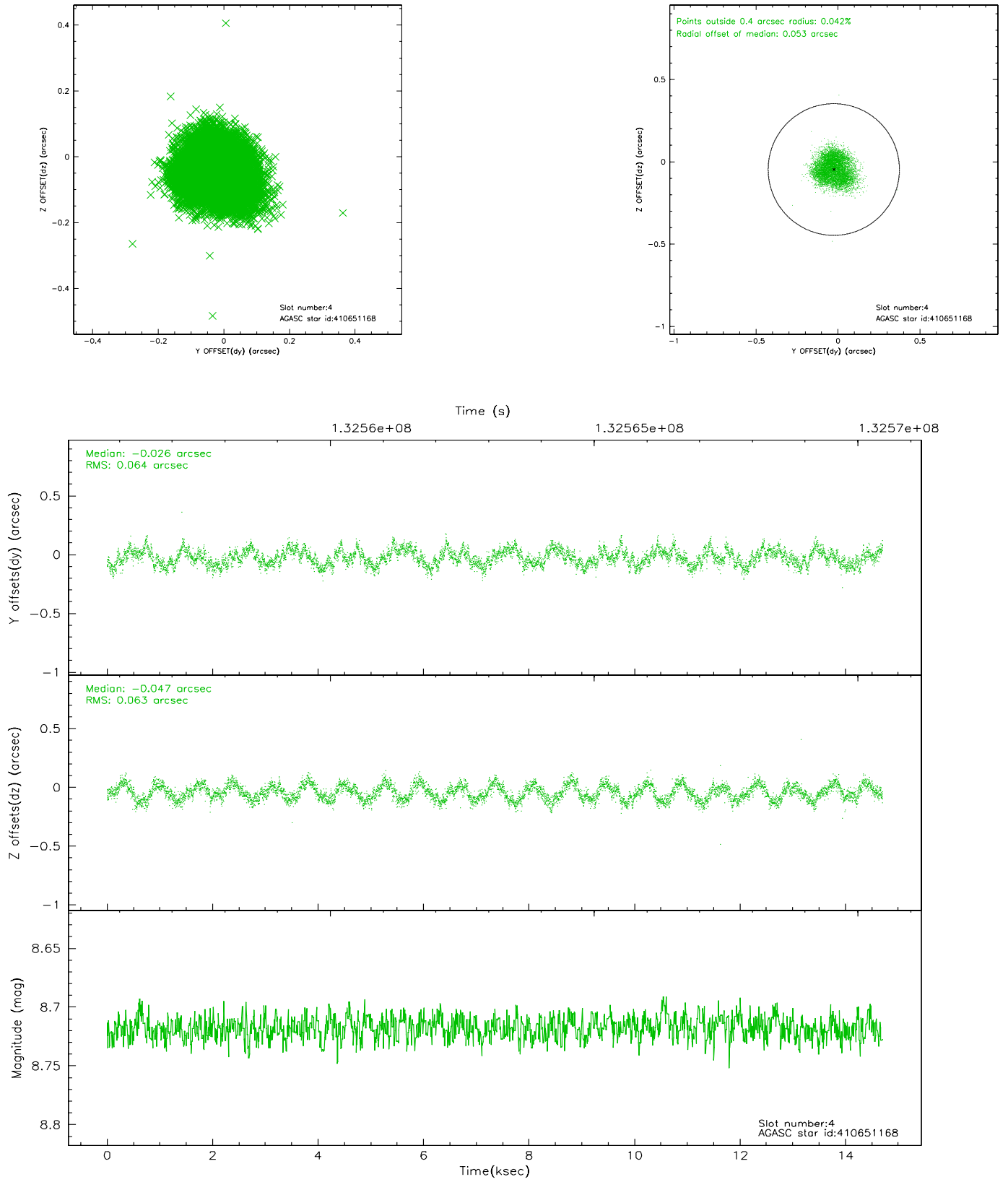
| slot | status | id | mag | n_pts | med_dy | med_dz | dr1 | dr2 | ra | dec | mean_y | mean_z |
|------|--------|-----------|------|-------|--------|--------|-------|-------|------------|-----------|----------|----------|
| 0 | FID | ACIS-I-1 | 7.24 | 3587 | -0.034 | 0.072 | 0.017 | 0.025 | 0.000000 | 0.000000 | 937.34 | -830.86 |
| 1 | FID | ACIS-I-5 | 7.24 | 3587 | -0.006 | 0.038 | 0.007 | 0.012 | 0.000000 | 0.000000 | -1810.53 | 1066.50 |
| 2 | FID | ACIS-I-6 | 7.26 | 3587 | -0.050 | -0.040 | 0.013 | 0.024 | 0.000000 | 0.000000 | 402.58 | 1711.23 |
| 3 | GUIDE | 410650472 | 7.64 | 7175 | 0.022 | -0.115 | 0.083 | 0.120 | 289.959245 | 43.556270 | -1506.82 | 375.51 |
| 4 | GUIDE | 410651168 | 8.72 | 7172 | -0.026 | -0.047 | 0.098 | 0.144 | 289.821163 | 43.791099 | -831.11 | 997.73 |
| 5 | GUIDE | 412361592 | 8.60 | 7162 | -0.047 | 0.056 | 0.102 | 0.186 | 290.903818 | 43.891292 | 465.46 | -1522.40 |
| 6 | GUIDE | 412362984 | 8.99 | 7172 | 0.032 | 0.144 | 0.108 | 0.167 | 290.197826 | 43.582253 | -1208.88 | -178.69 |
| 7 | GUIDE | 410649888 | 9.65 | 7166 | 0.023 | -0.041 | 0.187 | 0.283 | 289.831705 | 44.006738 | -90.27 | 1231.52 |

2.4 Star Slots

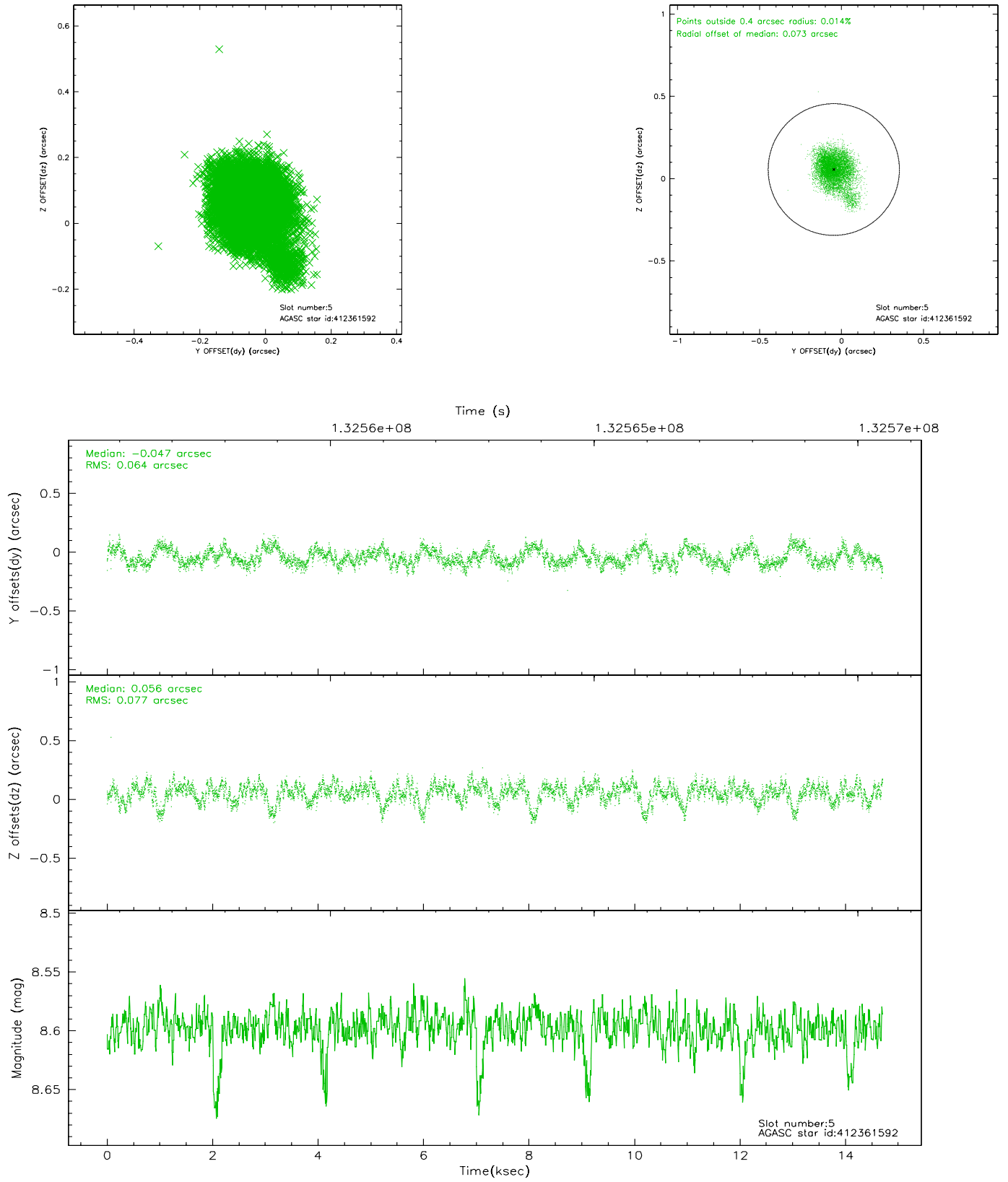
2.4.1 Slot 3



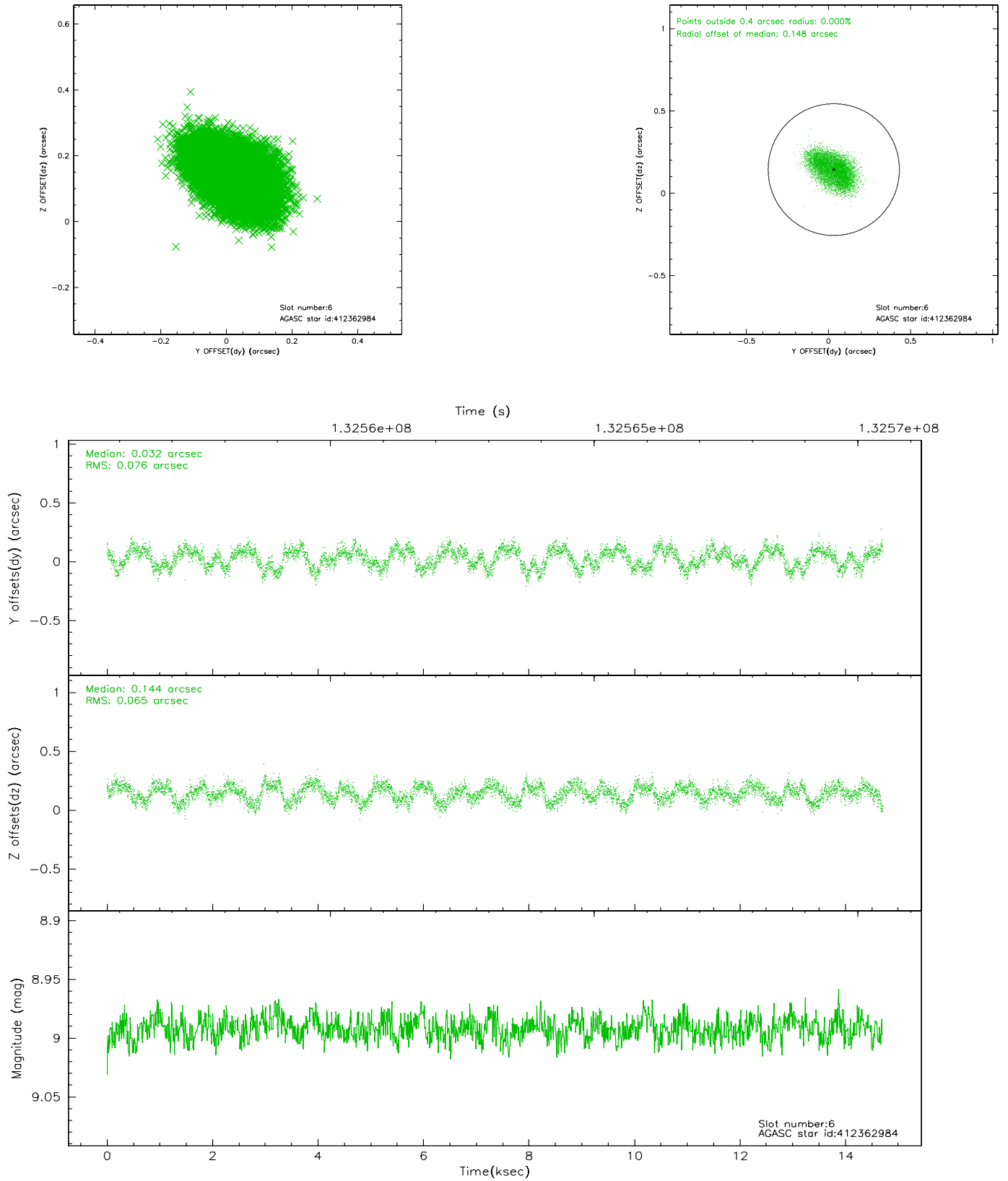
2.4.2 Slot 4



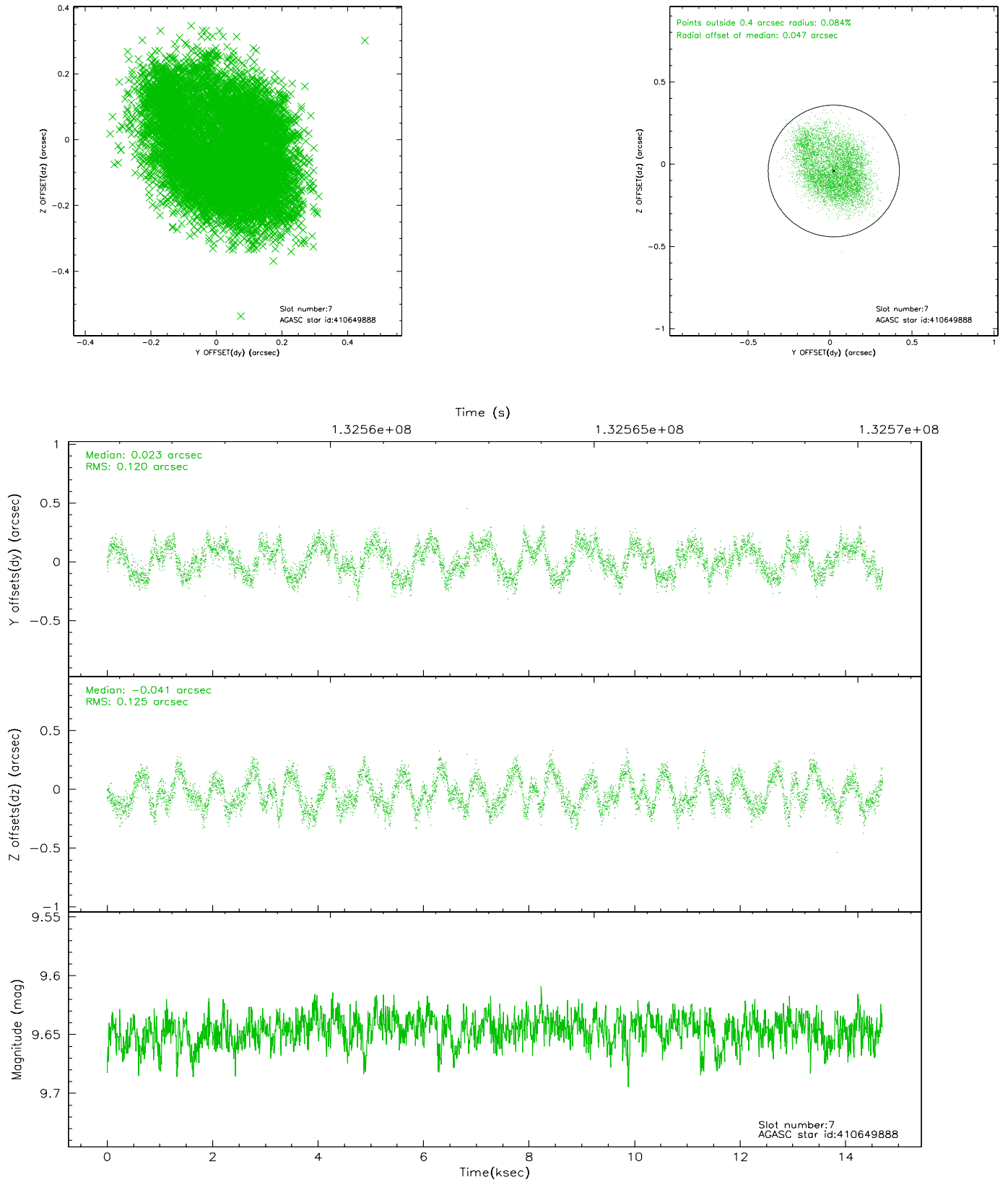
2.4.3 Slot 5



2.4.4 Slot 6

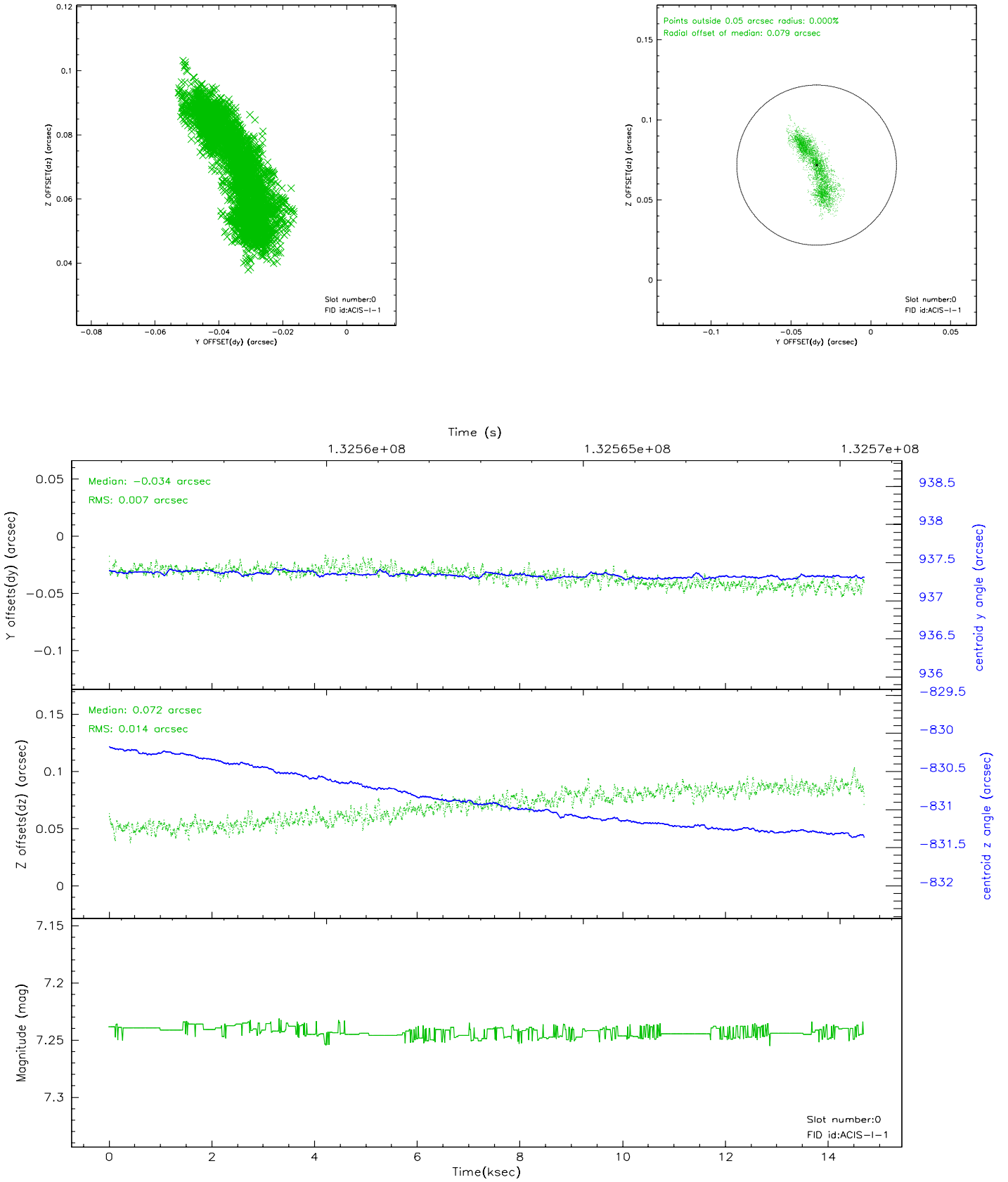


2.4.5 Slot 7

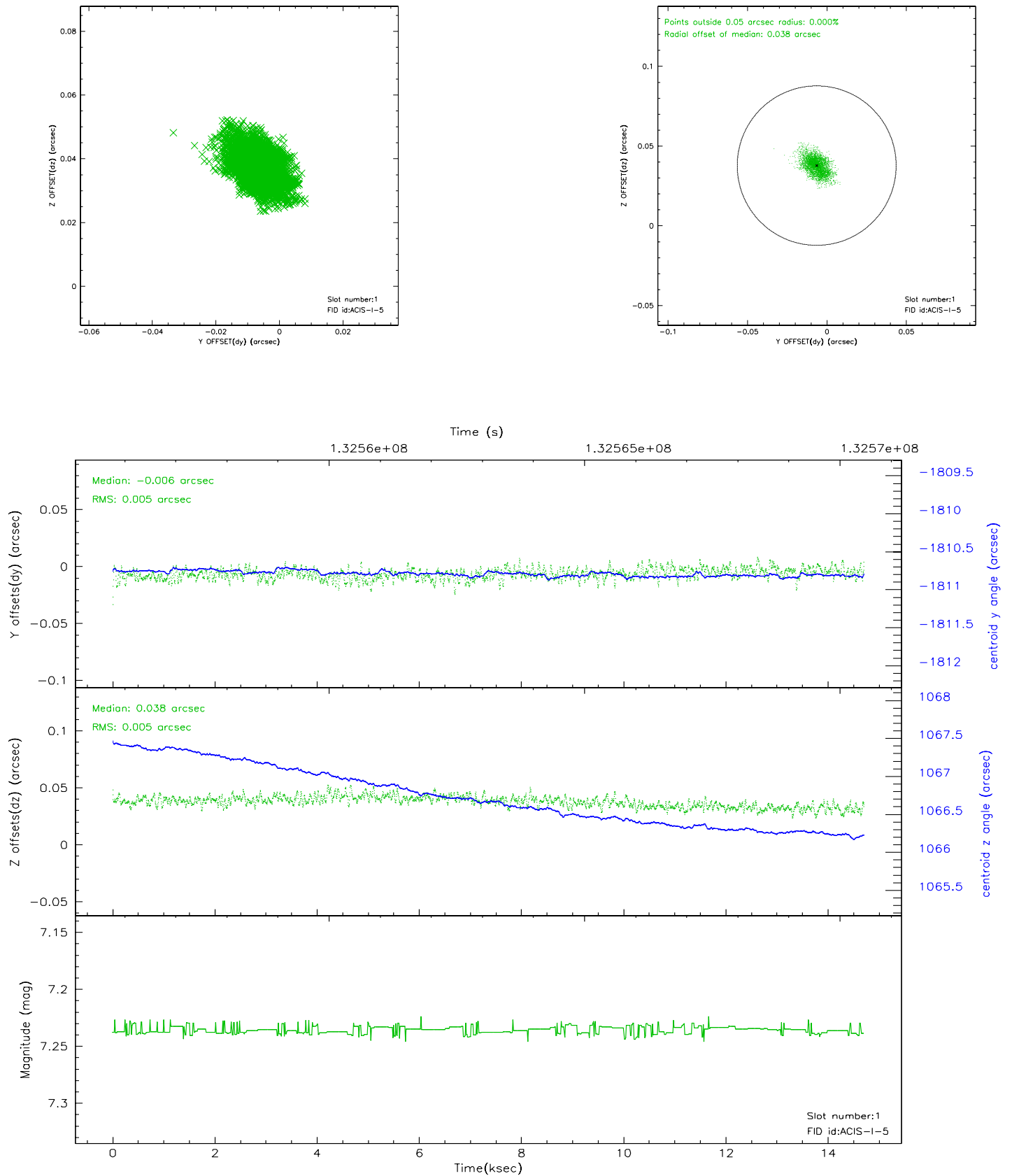


2.5 FID Slots

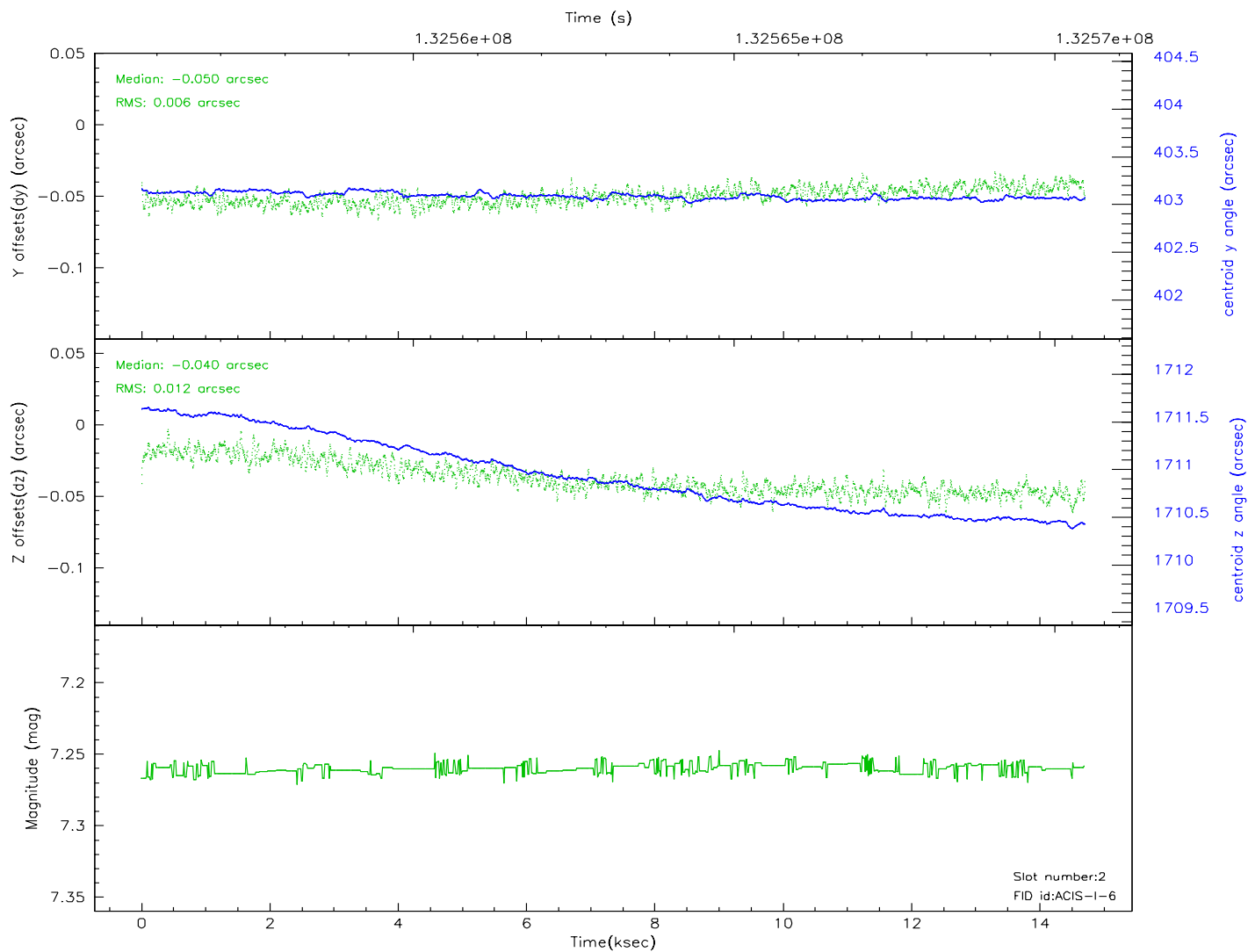
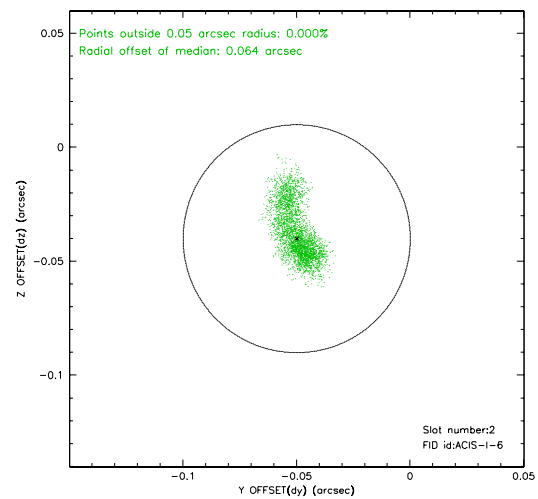
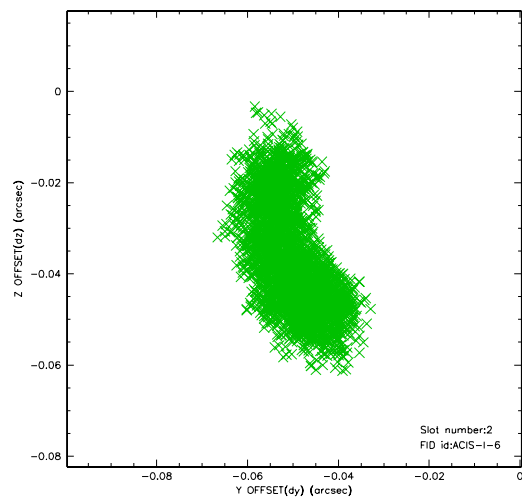
2.5.1 Slot 0



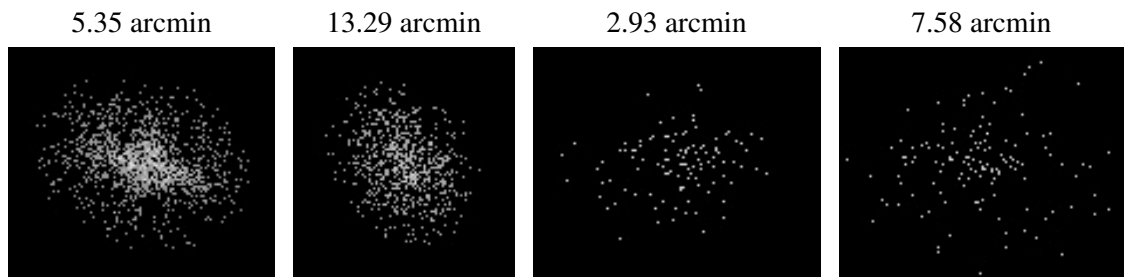
2.5.2 Slot 1



2.5.3 Slot 2



3 Point Sources



A Summary

A.1 Status

| | |
|----------------------------|-------------|
| V&V Scientist | Joy Nichols |
| V&V Date (YYYY-MM-DD) | 2006.09.08 |
| V&V Edition | 1 |
| V&V Disposition and Status | OK |
| V&V Charge Time | 14.619 |

A.2 Comments

Target coordinates designated by observer fall in the gap between the CCD chips.

However, the target coordinates indicate the center position of the cluster.

The cluster is very extended and essentially all of it is detected on the CCDs.