

V&V Reference Report

L2 ASCDS Version : 8.4.5

Observation 3111 - L2 Version 3
Chandra X-Ray Center

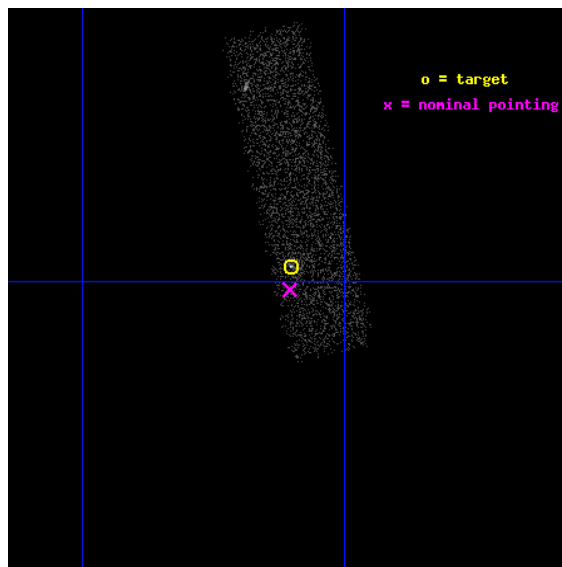
L2 Processing Date : Oct 3 2012

Contents

1	Front	2
2	OBI	3
2.1	OBI	3
2.1.1	Images	3
2.1.2	Bias	3
2.1.3	Parameters	4
2.1.4	Events	4
2.2	Compared Parameters	5
2.3	Aspect	6
2.4	Star Slots	9
2.4.1	Slot 3	9
2.4.2	Slot 4	10
2.4.3	Slot 5	11
2.4.4	Slot 6	12
2.4.5	Slot 7	13
2.5	FID Slots	14
2.5.1	Slot 0	14
2.5.2	Slot 1	15
2.5.3	Slot 2	16
A	Summary	17
A.1	Status	17
A.2	Comments	17

1 Front

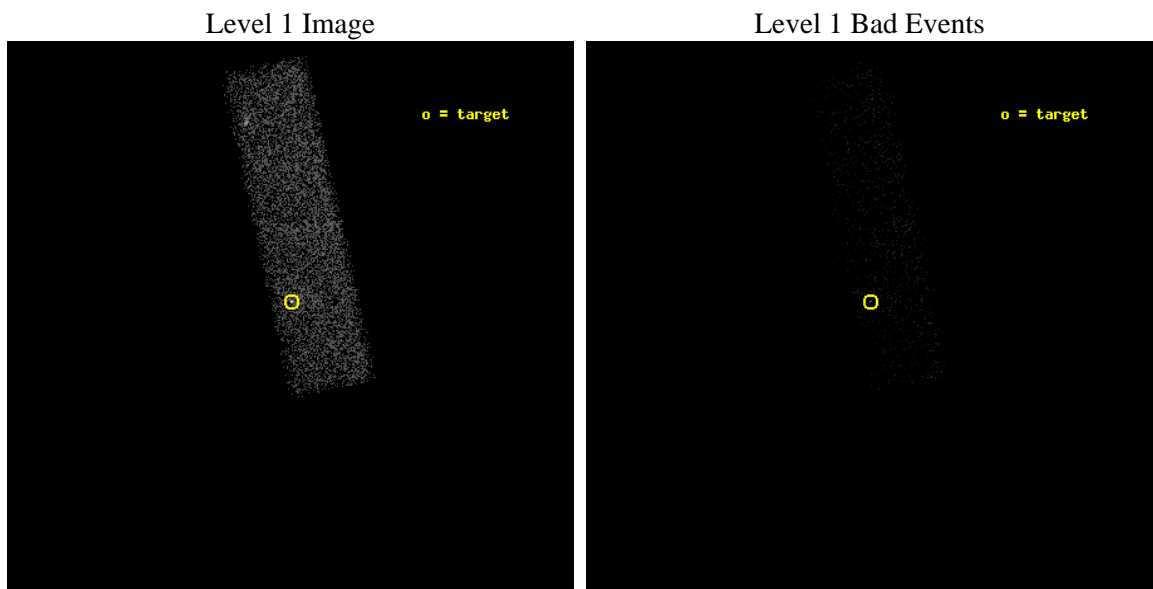
seq_num	700550	Sequence number
obs_id	3111	Observation id
title	A COMPLETE SURVEY FOR X-RAY EMISSION FROM RADIO JETS	Proposal titl
observer	Dr. Herman Marshall	Principal investigator
object	0745+241	Source name
dtcycle	0	
cycle	P	events from which exps? Prim/Second/Both
ra_targ	117.150417	Observer's specified target RA [deg]
dec_targ	24.006694	Observer's specified target Dec [deg]
ra_nom	117.1510780313	Nominal RA [deg]
dec_nom	23.996645411702	Nominal Dec [deg]
roll_nom	257.48163725052	Nominal Roll [deg]
revision	3	Processing version of data
ontime	5276.7999803573	Sum of GTIs [s]
livetime	5019.3094077402	Livetime [s]
ontime7	5276.7999803573	Sum of GTIs [s]
l2events	6040	Number of level 2 events



2 OBI

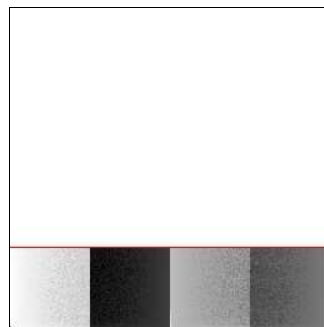
2.1 OBI

2.1.1 Images



2.1.2 Bias

Chip 7



2.1.3 Parameters

obi_num	1	Obi number	sched_exp_time	5000.000000	[s] Scheduled observation exposure time
ascdsver	8.4.5	Processing system revision	ontime	5276.7999803573	Sum of GTIs [s]
caldsver	4.5.2	 	ontime7	5276.7999803573	Sum of GTIs [s]
date	2012-10-03T03:33:51	Date and time of file creation	l1events	13640	Number of level 1 events
revision	3	Processing version of data			

2.1.4 Events

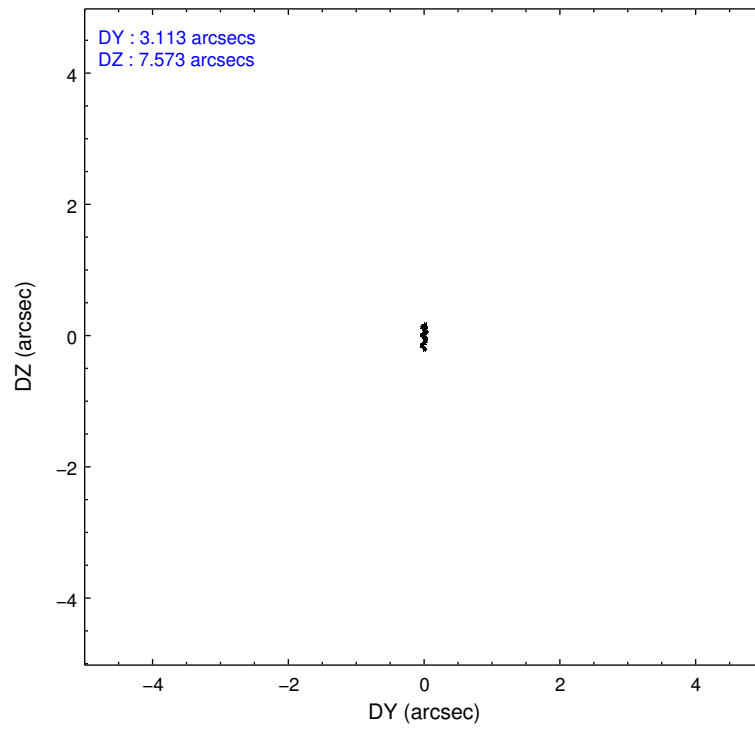
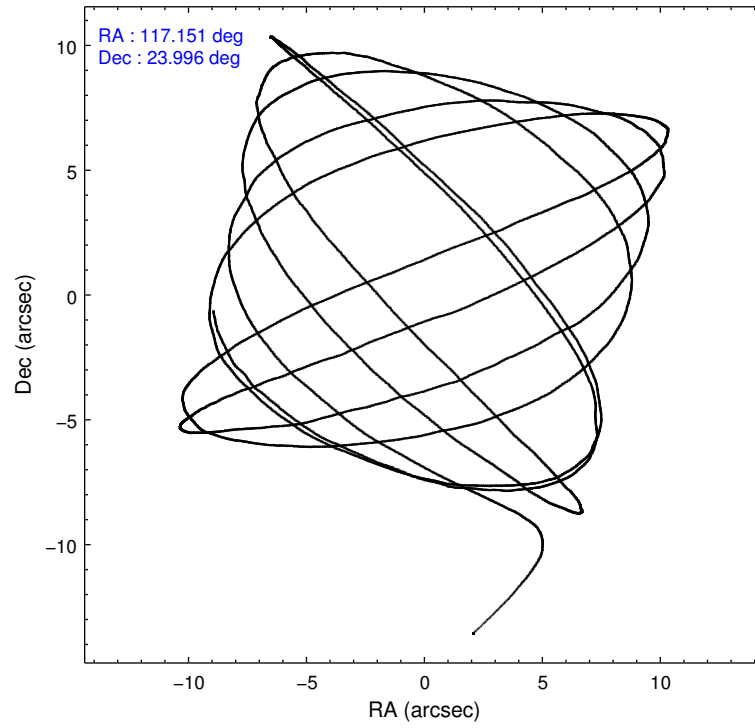
	ccd 7
level 1 events	13640
rejected events	7466
rejected %	54%

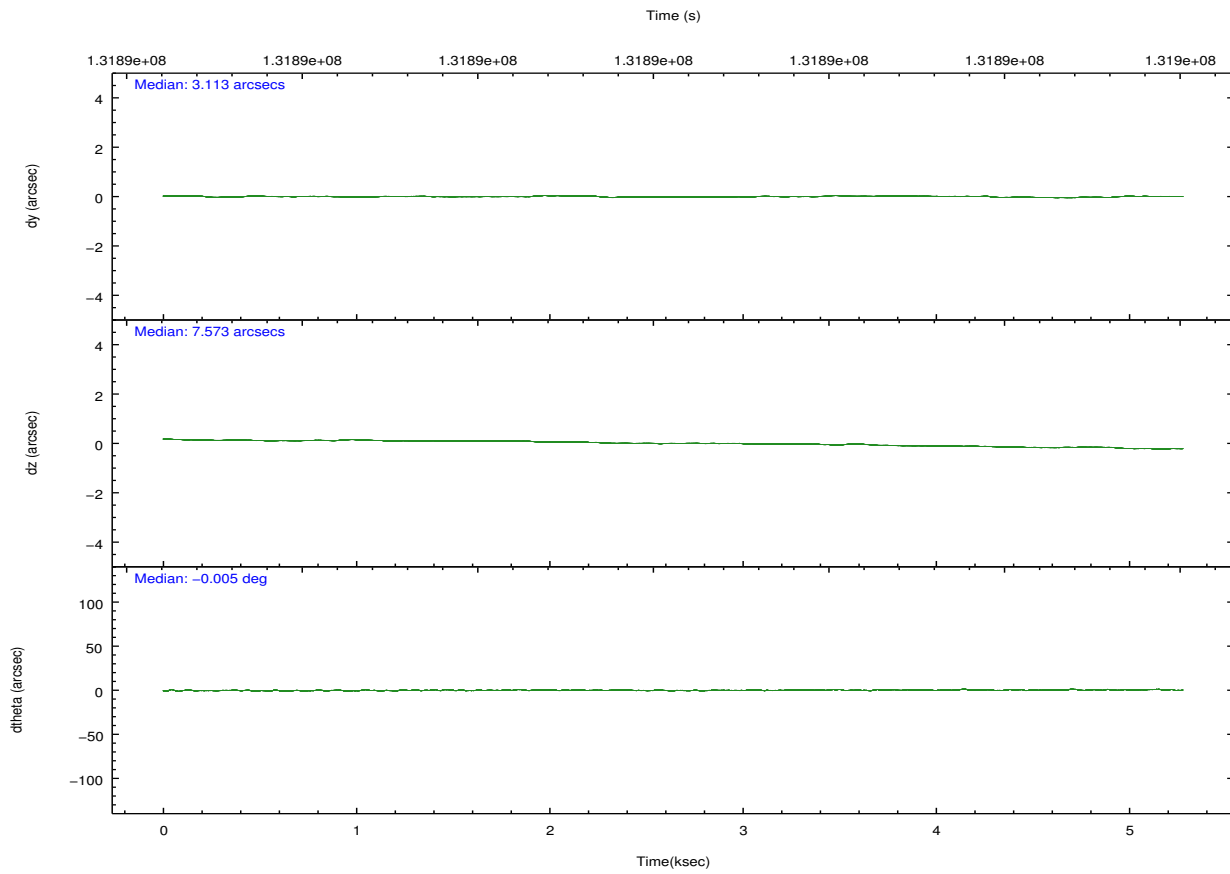
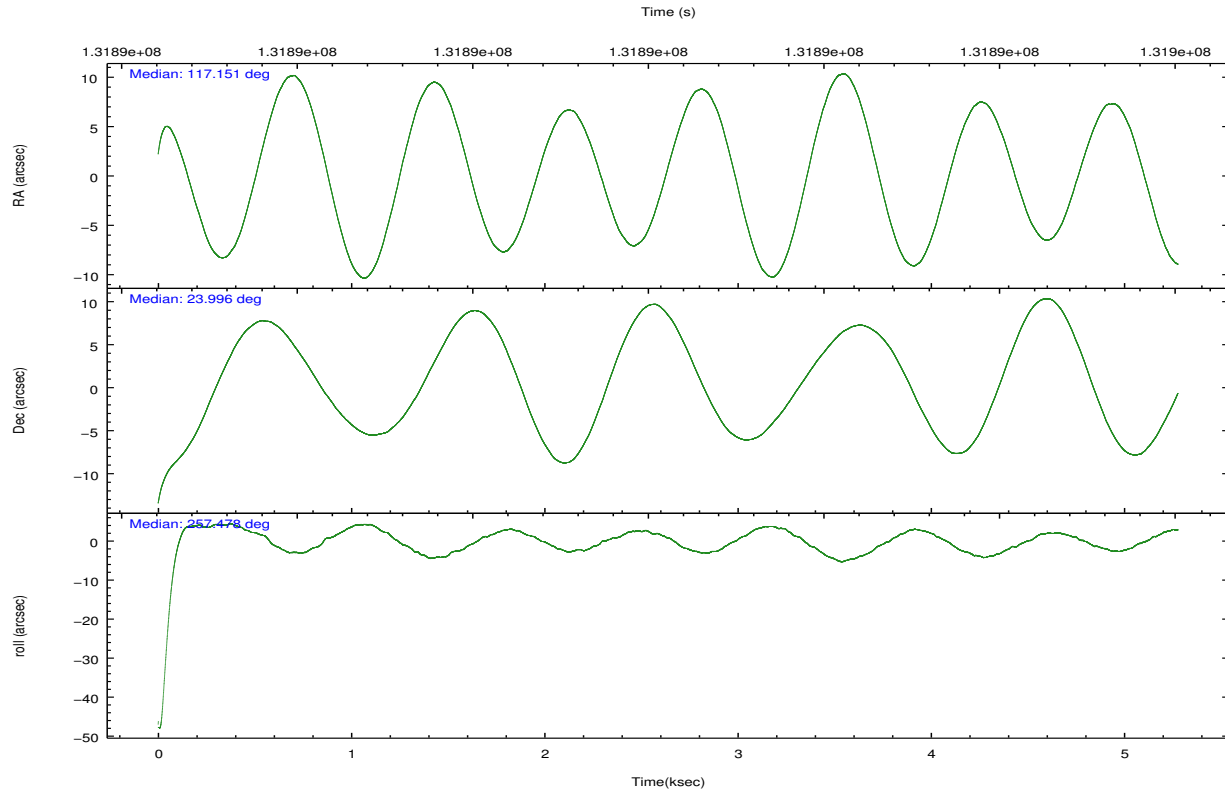
	ccd 7
grade 0 events	810
	5%
grade 1 events	14
	0%
grade 2 events	1372
	10%
grade 3 events	725
	5%
grade 4 events	673
	4%
grade 5 events	1116
	8%
grade 6 events	3177
	23%
grade 7 events	5753
	42%

2.2 Compared Parameters

Parameter	Planned	Actual	Parameter	Planned	Actual
Instrument	ACIS	ACIS	Obspar format version number	7	7
Detector	ACIS-7	ACIS-7	Obspar file type	PREDICTED	ACTUAL
Grating	NONE	NONE	Obspar update status	NONE	UPDATED
Data mode	FAINT	FAINT	Number of optional ACIS chips dropped	0	0
Observation mode	POINTING	POINTING	On-chip summing requested	N	N
[deg] Pointing RA	117.141749	117.1510780312992	Subarray requested	CUSTOM	1/4
[deg] Pointing Dec	24.022652	23.99664541170243	Subarray start row	1	1
[deg] Pointing Roll	257.328922	257.4816372505222	Subarray row count	256	256
[mm] SIM focus pos	-0.684267	-0.6828225247311905	Alternating exposures requested	N	N
[mm] SIM defocus	0	0.001444936568705701	[s] Primary exposure time	0.000000	0.8
[mm] SIM translation stage pos	-178.632523	-178.6370735452349			
[mm] SIM translation stage offset	-11.5	-11.49544903777291			
[s] Observation start time (MET)	131889747.184000	131888724.78996			
Observation start date	2002-03-07T12:01:23	2002-03-07T11:45:24			
[s] Observation end time (MET)	131894747.184000	131895404.20273			
Observation end date	2002-03-07T13:24:43	2002-03-07T13:36:44			
Read mode	TIMED	TIMED			

2.3 Aspect



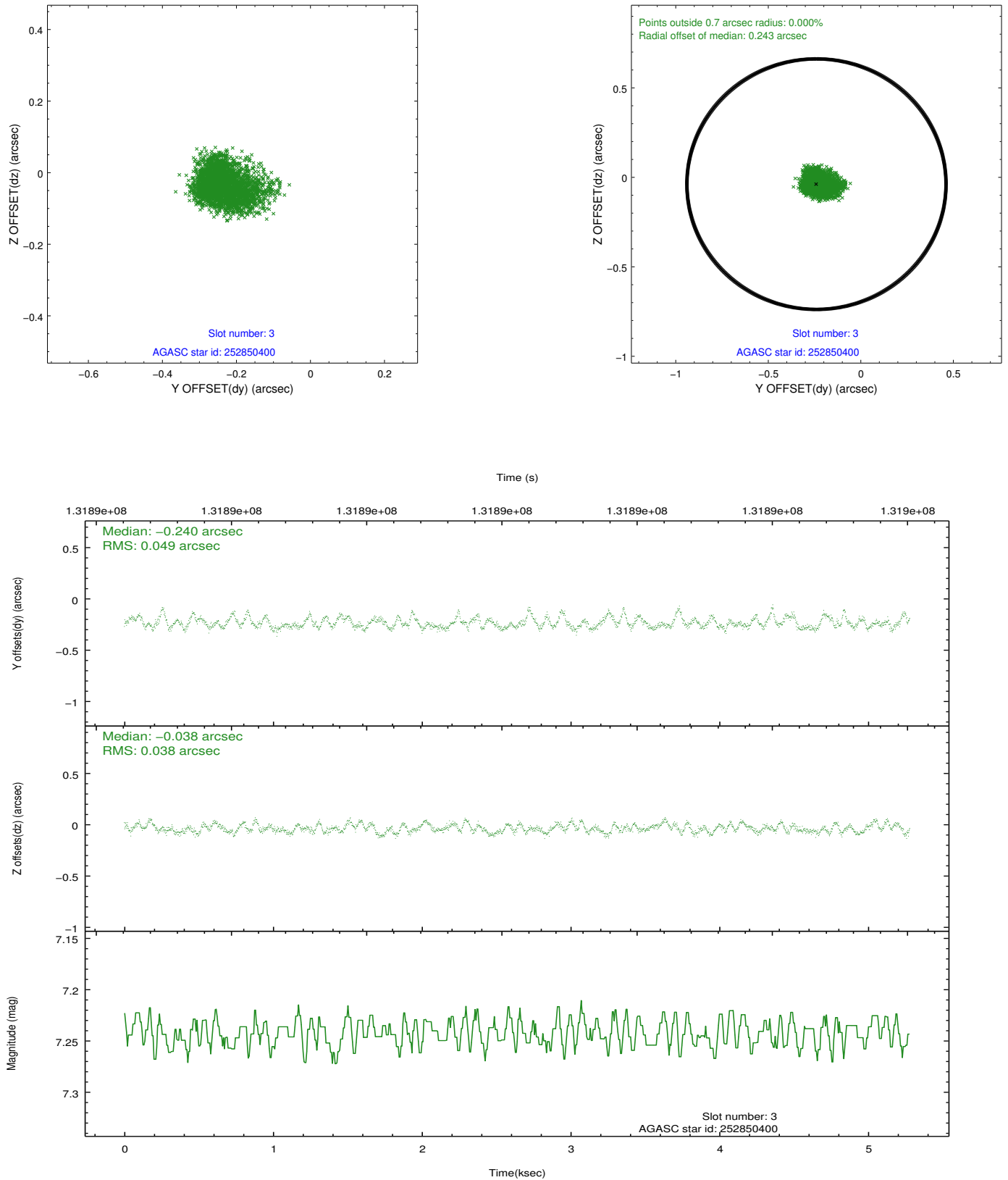


Slot Statistics

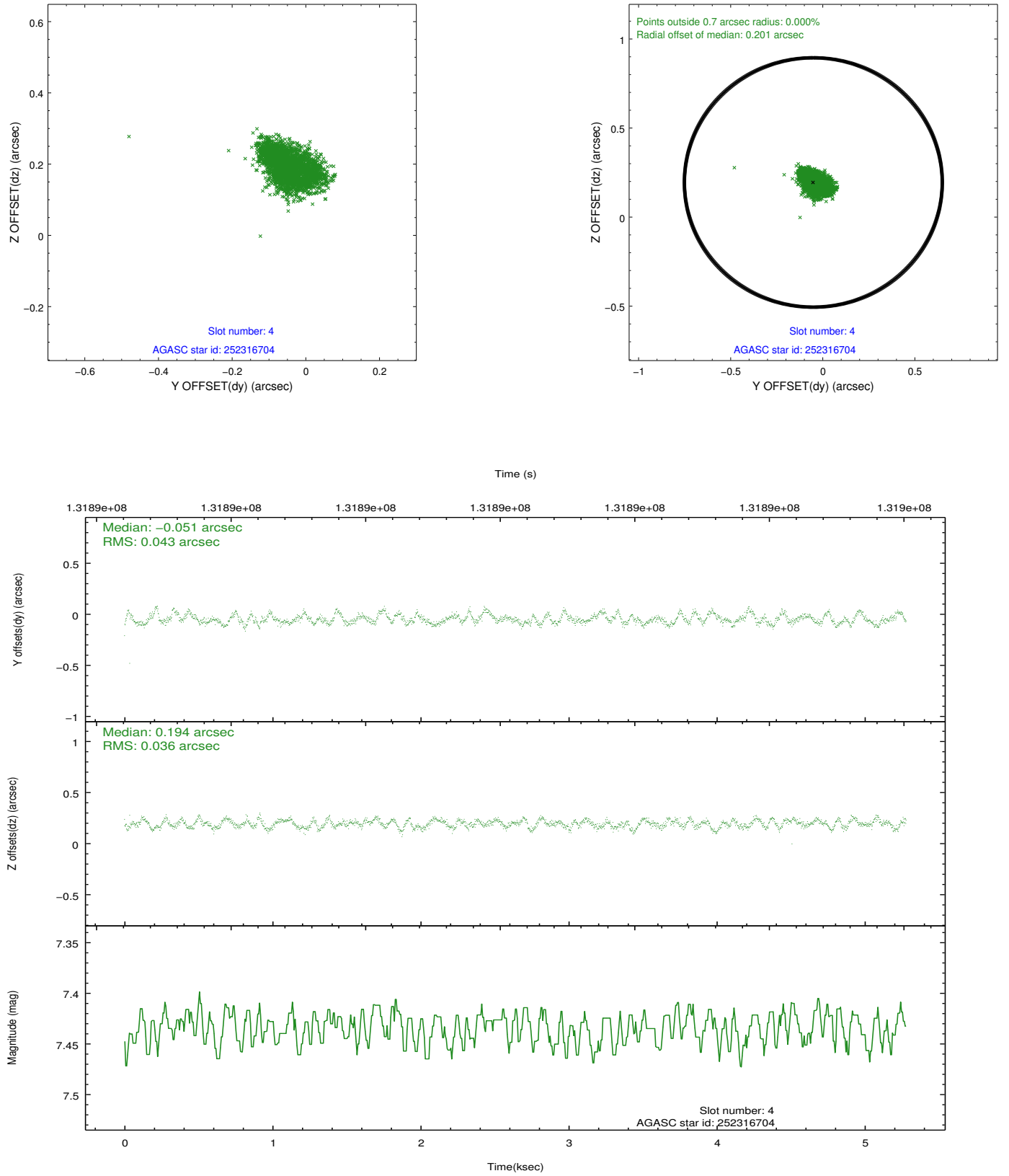
slot	status	id	mag	n_pts	med_dy	med_dz	dr1	dr2	ra	dec	mean_y	mean_z
0	FID	ACIS-S-2	7.08	1288	-0.071	-0.297	0.007	0.012	0.000000	0.000000	-754.94	-1965.70
1	FID	ACIS-S-4	7.18	1288	-0.015	0.113	0.006	0.011	0.000000	0.000000	2157.84	-58.14
2	FID	ACIS-S-5	7.23	1288	0.054	0.192	0.006	0.011	0.000000	0.000000	-1806.21	-63.16
3	GUIDE	252850400	7.24	2576	-0.240	-0.038	0.064	0.108	117.328551	24.488727	-1772.96	228.74
4	GUIDE	252316704	7.43	2576	-0.051	0.194	0.060	0.095	117.665665	24.161024	-868.63	1569.39
5	GUIDE	250625536	7.44	2576	0.076	-0.090	0.047	0.079	116.787491	23.663707	1514.18	-855.71
6	GUIDE	250617704	8.19	2575	0.158	-0.153	0.077	0.132	116.542992	23.548677	2093.87	-1554.75
7	GUIDE	252322272	8.43	2575	0.054	0.091	0.049	0.078	117.378084	23.281366	2431.21	1347.66

2.4 Star Slots

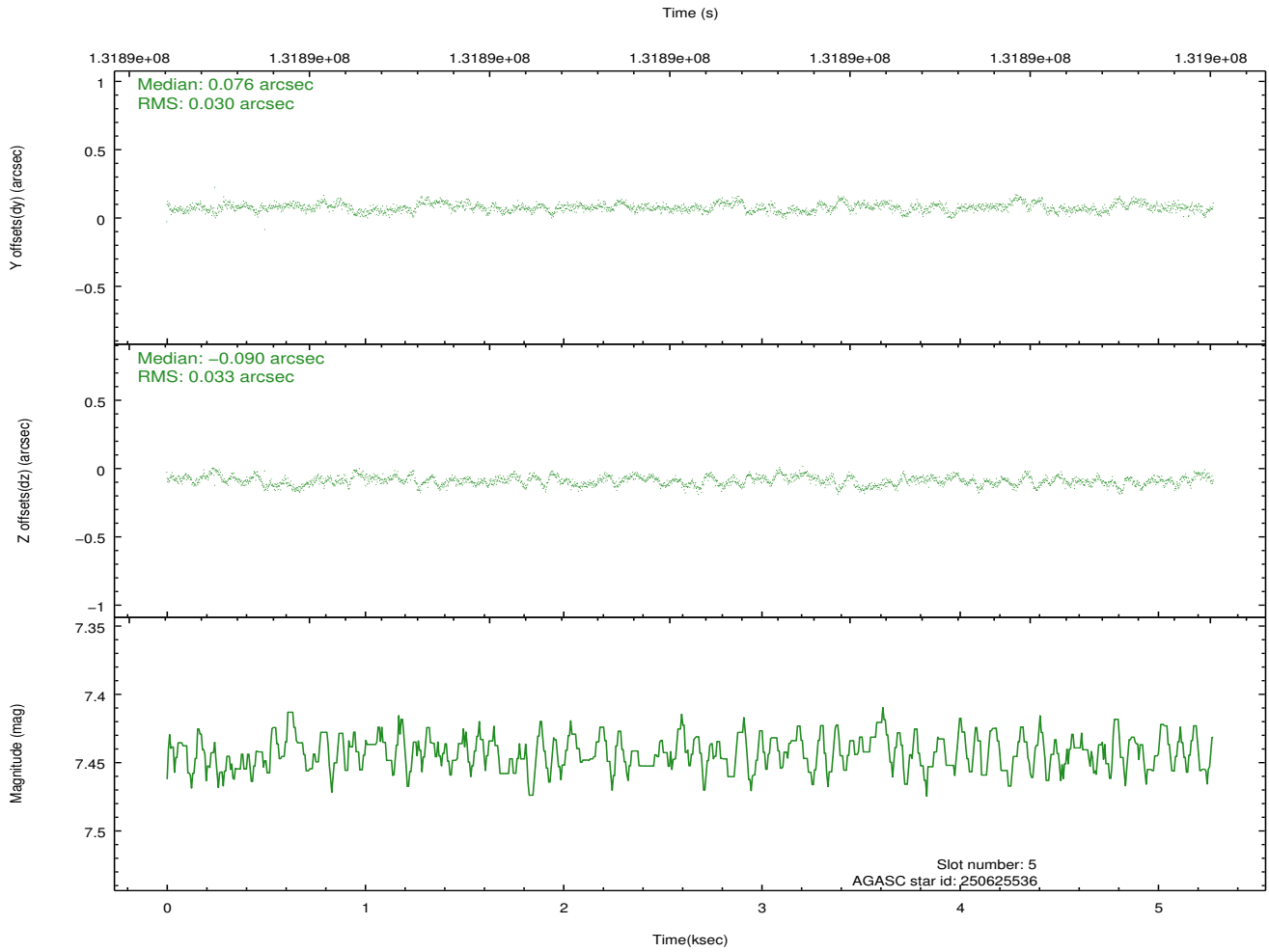
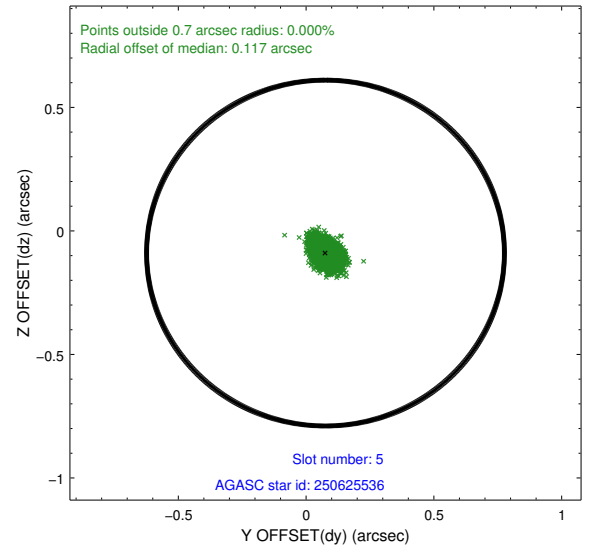
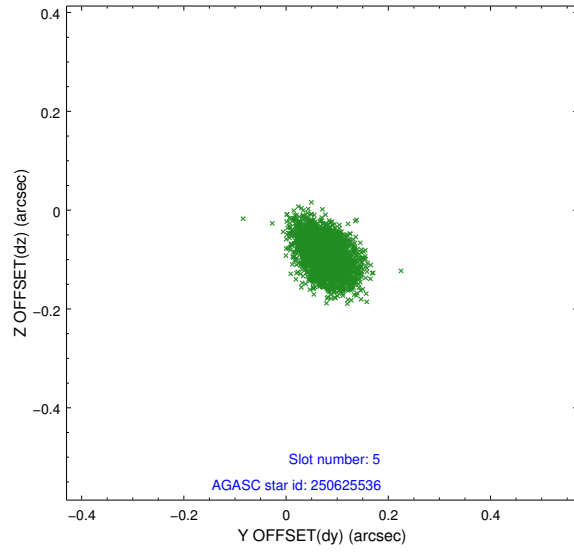
2.4.1 Slot 3



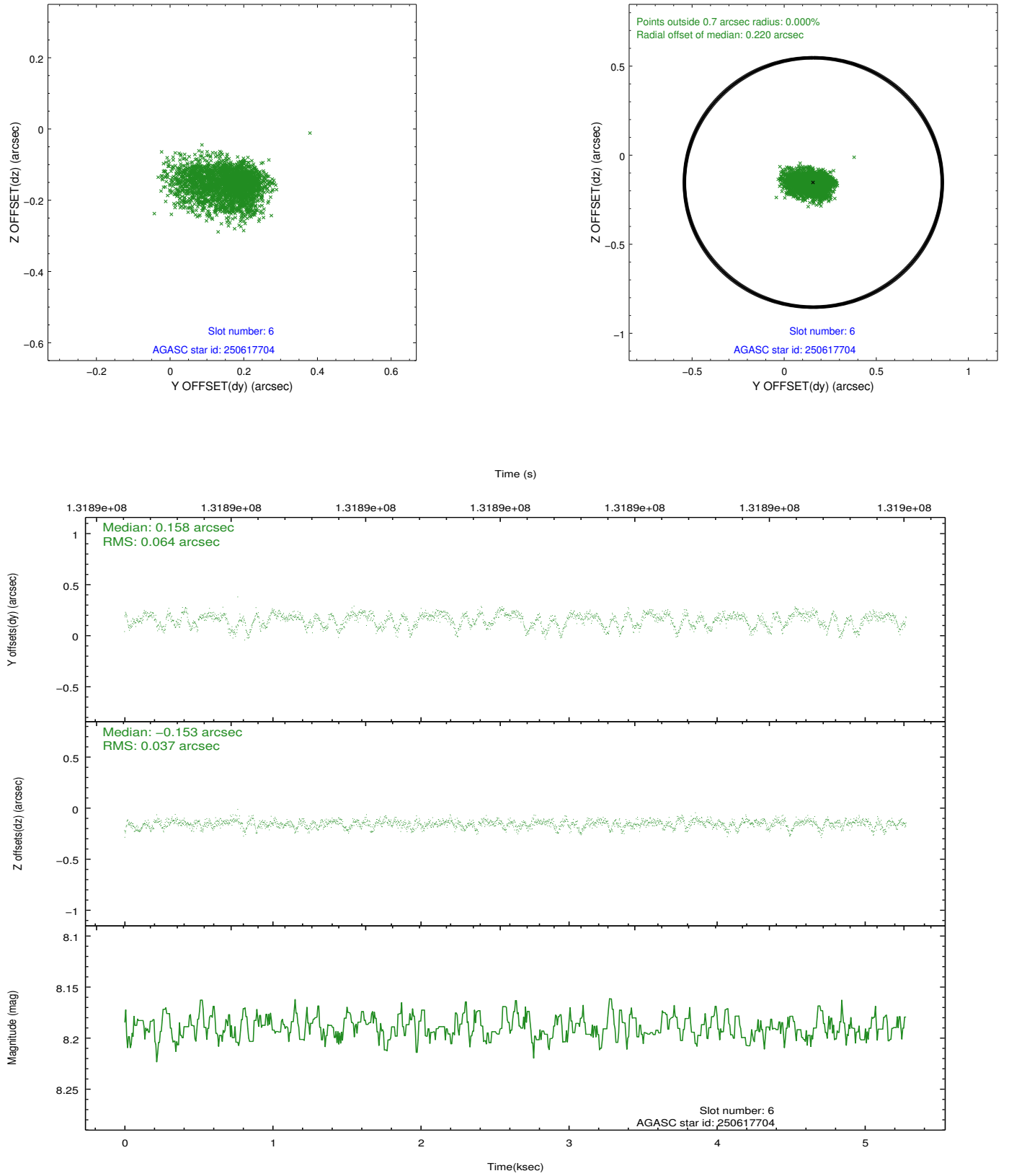
2.4.2 Slot 4



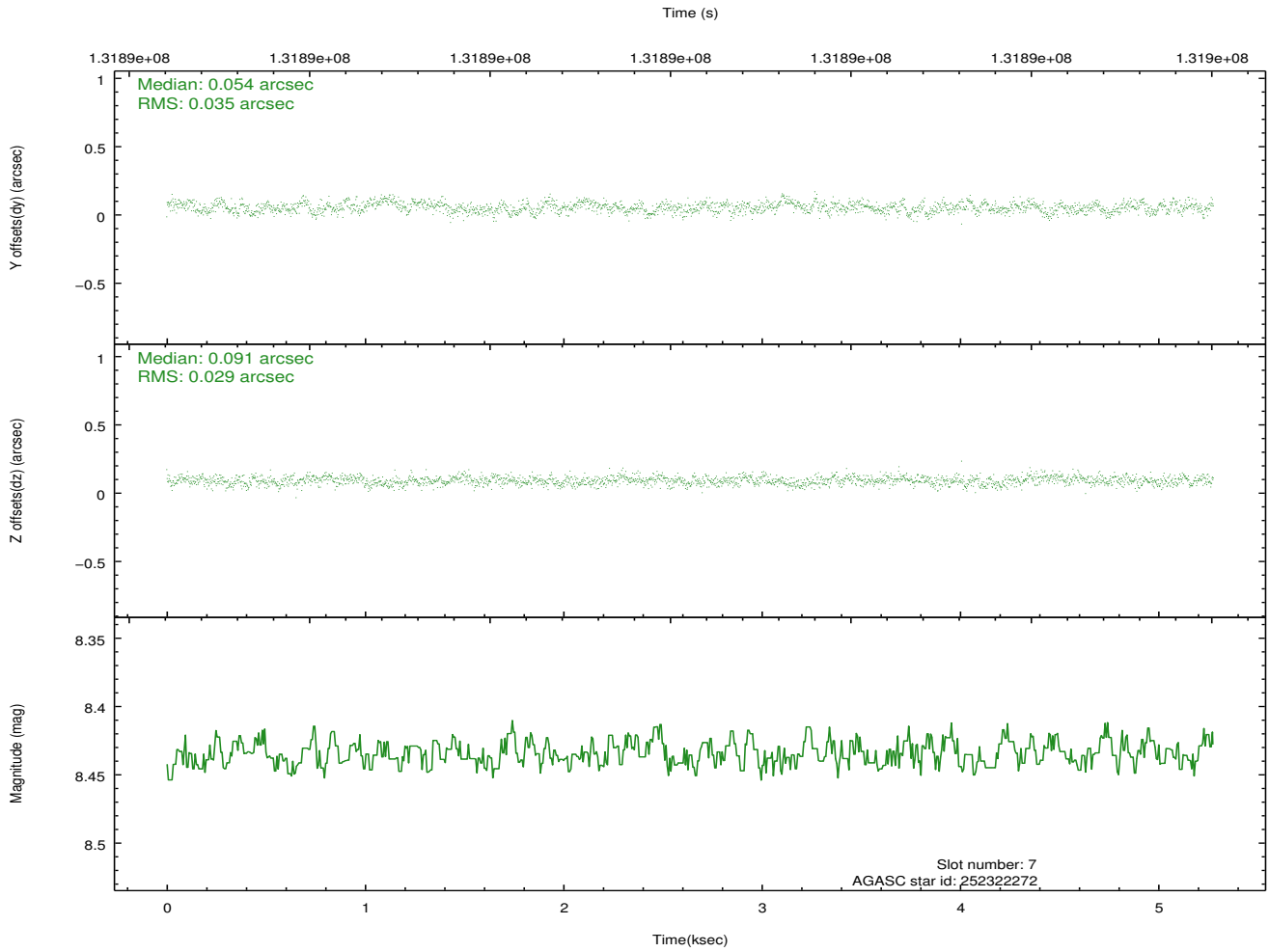
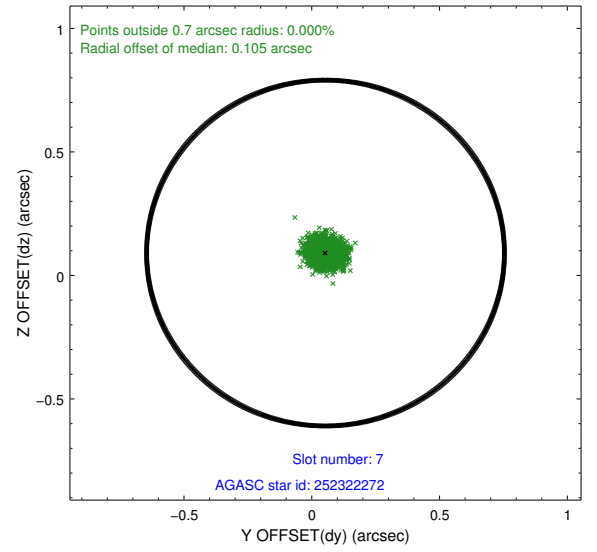
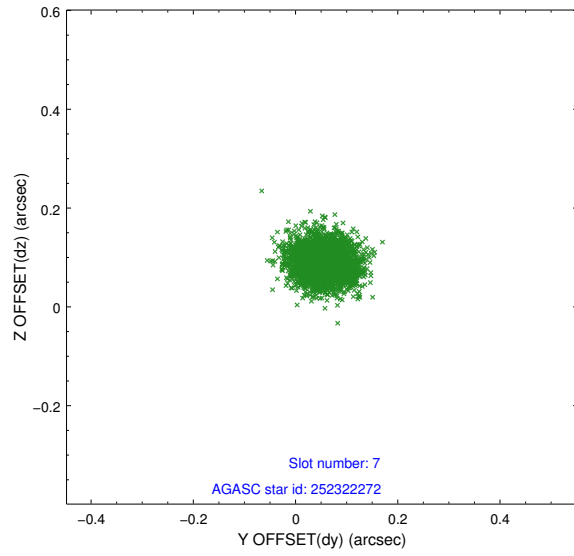
2.4.3 Slot 5



2.4.4 Slot 6

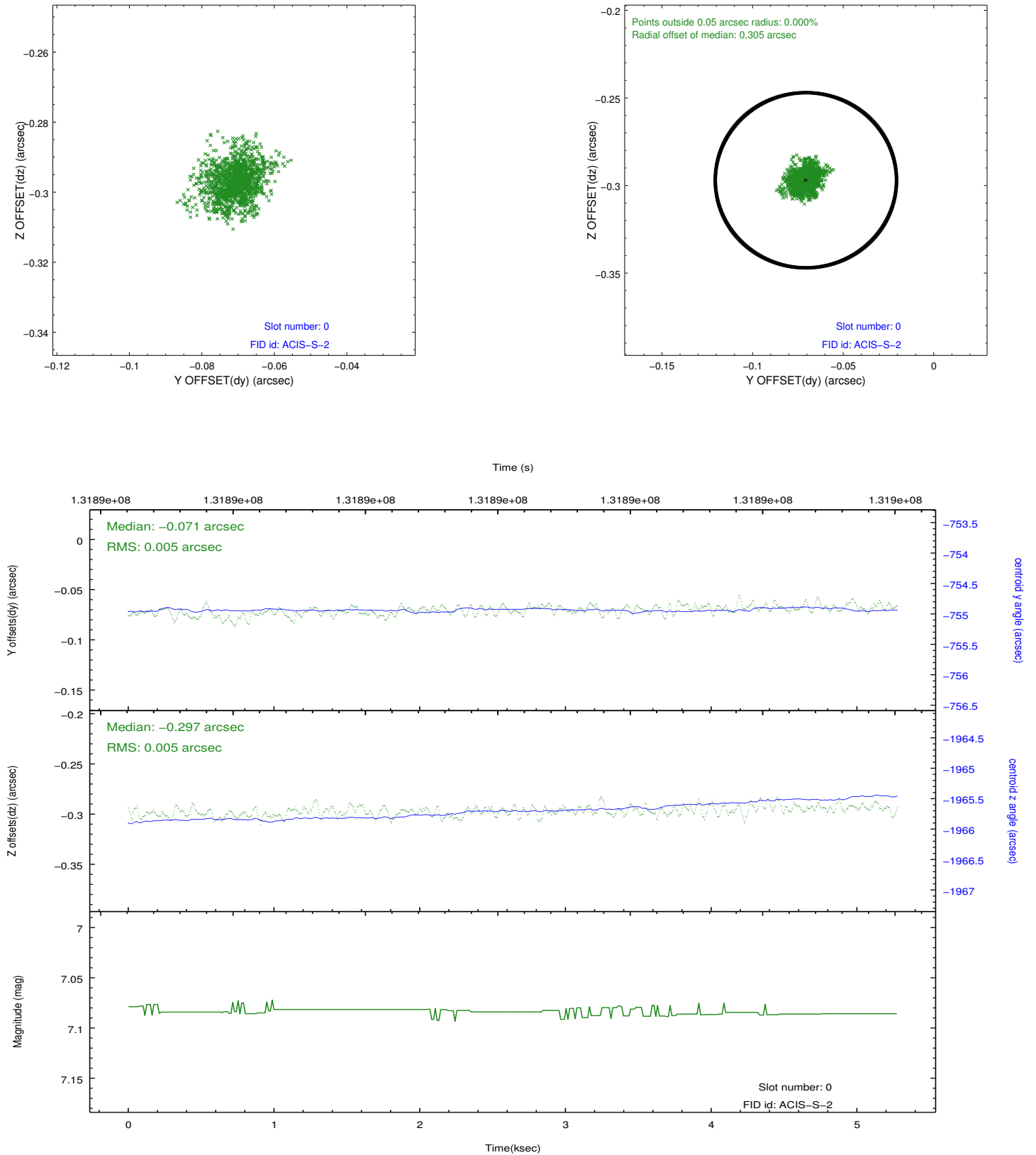


2.4.5 Slot 7

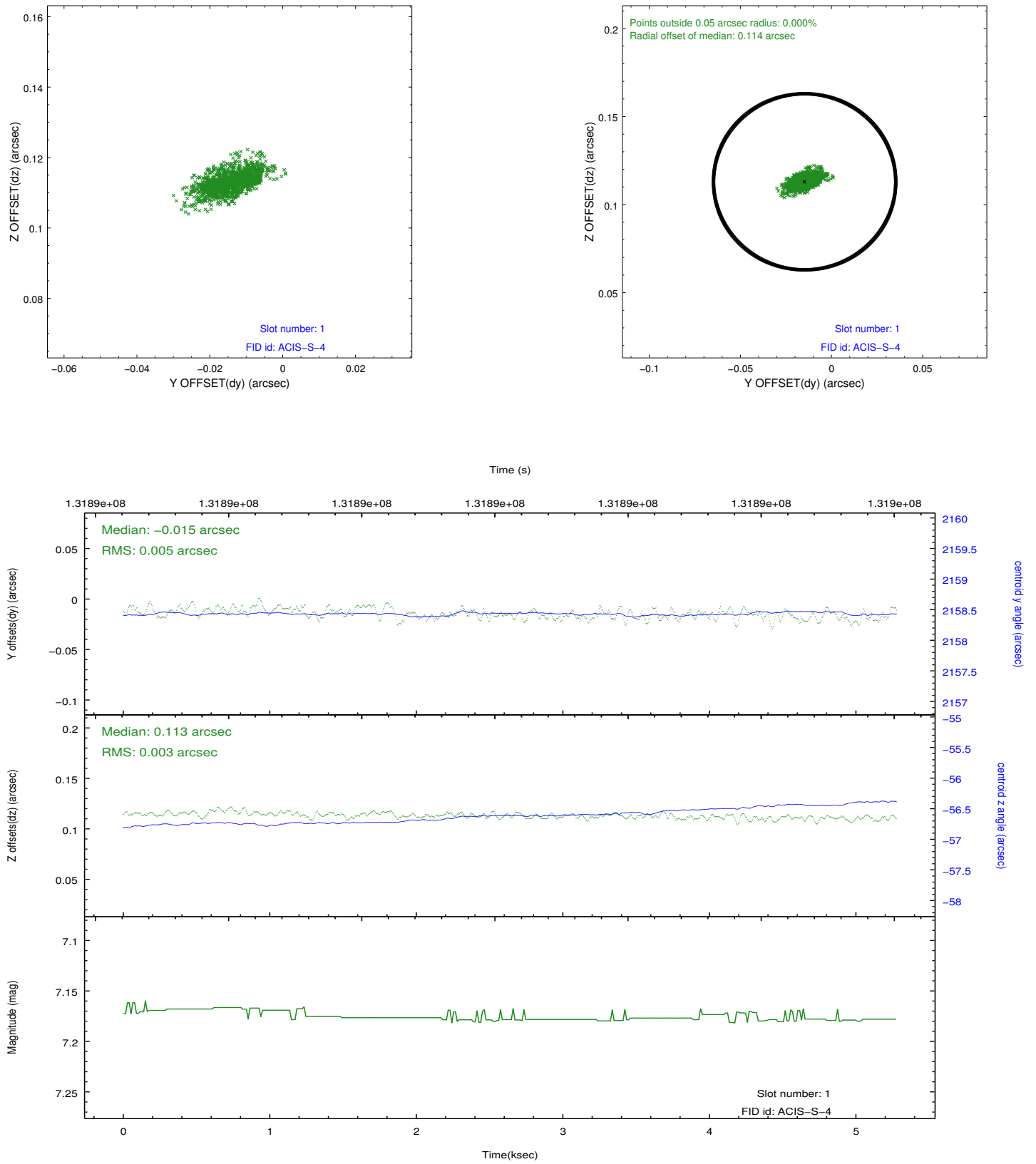


2.5 FID Slots

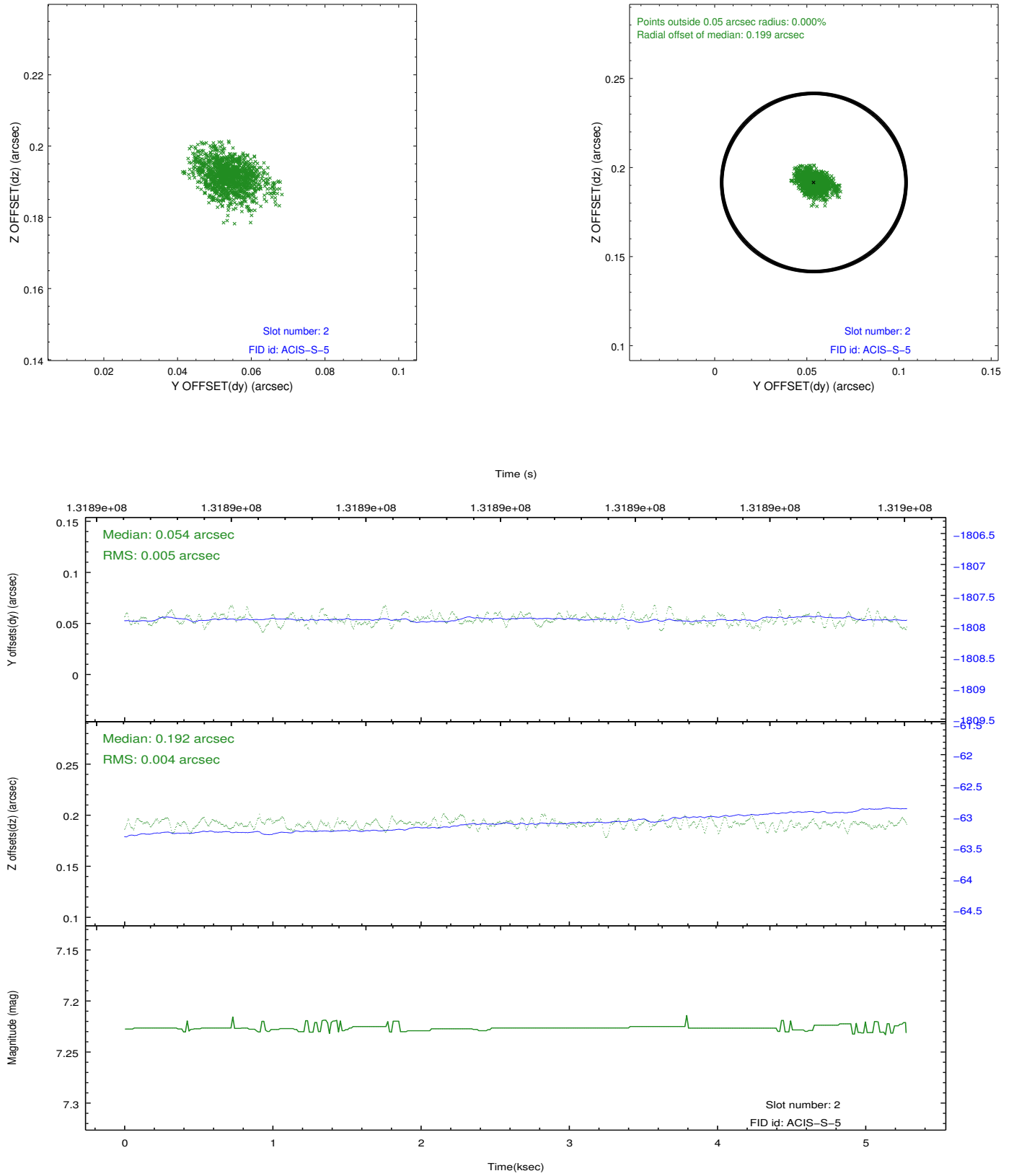
2.5.1 Slot 0



2.5.2 Slot 1



2.5.3 Slot 2



A Summary

A.1 Status

V&V Scientist	Jen Lauer
V&V Date (YYYY-MM-DD)	2012.10.04
V&V Edition	1
V&V Disposition and Status	OK
V&V Charge Time	5.276

A.2 Comments

Roll preference met.