

V&V Reference Report

L2 ASCDS Version : 8.4.5

Observation 2951 - L2 Version 3
Chandra X-Ray Center

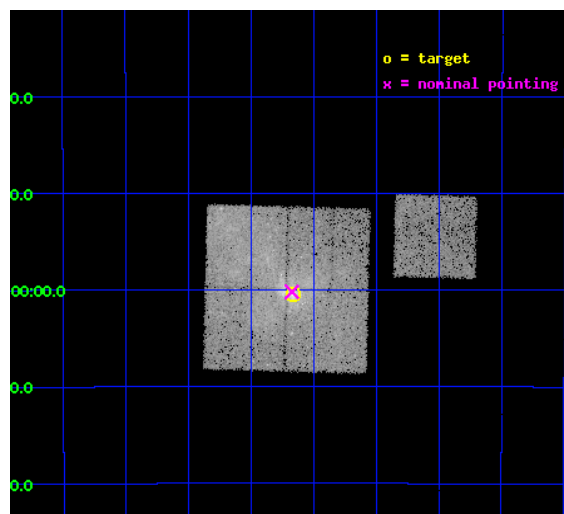
L2 Processing Date : Oct 2 2012

Contents

1	Front	2
2	OBI	3
2.1	OBI	3
2.1.1	Images	3
2.1.2	Bias	3
2.1.3	Parameters	4
2.1.4	Events	4
2.2	Compared Parameters	5
2.3	Aspect	6
2.4	Star Slots	9
2.4.1	Slot 3	9
2.4.2	Slot 4	10
2.4.3	Slot 5	11
2.4.4	Slot 6	12
2.4.5	Slot 7	13
2.5	FID Slots	14
2.5.1	Slot 0	14
2.5.2	Slot 1	15
2.5.3	Slot 2	16
A	Summary	17
A.1	Status	17
A.2	Comments	17

1 Front

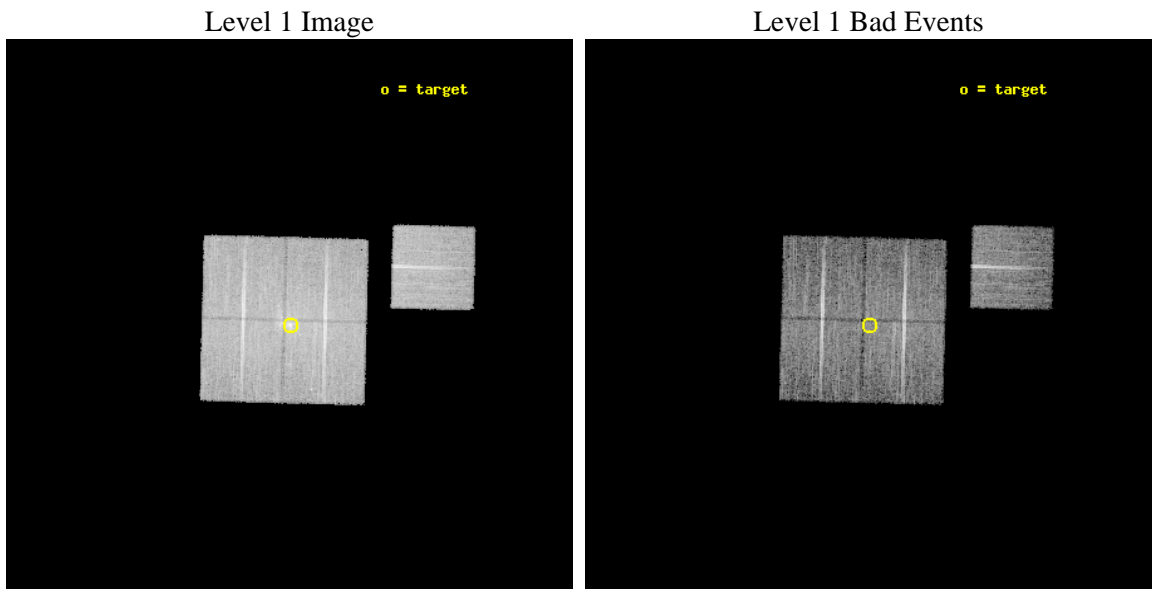
seq_num	600288	Sequence number
obs_id	2951	Observation id
title	SIMULTANEOUS X-RAY/RADIO MONITORING OF SAGITTARIUS A*	Proposal tit
observer	Professor Gordon Garmire	Principal investigator
object	SGR A*	Source name
dtcycle	0	
cycle	P	events from which exps? Prim/Second/Both
ra_targ	266.416667	Observer's specified target RA [deg]
dec_targ	-29.007778	Observer's specified target Dec [deg]
ra_nom	266.4186176033	Nominal RA [deg]
dec_nom	-29.003445762348	Nominal Dec [deg]
roll_nom	91.495134659579	Nominal Roll [deg]
revision	3	Processing version of data
ontime	12533.299975902	Sum of GTIs [s]
livetime	12369.543184835	Livetime [s]
ontime0	12533.299975902	Sum of GTIs [s]
ontime1	12533.299975902	Sum of GTIs [s]
ontime2	12530.159015656	Sum of GTIs [s]
ontime3	12533.299975902	Sum of GTIs [s]
ontime6	12533.299975902	Sum of GTIs [s]
l2events	93569	Number of level 2 events



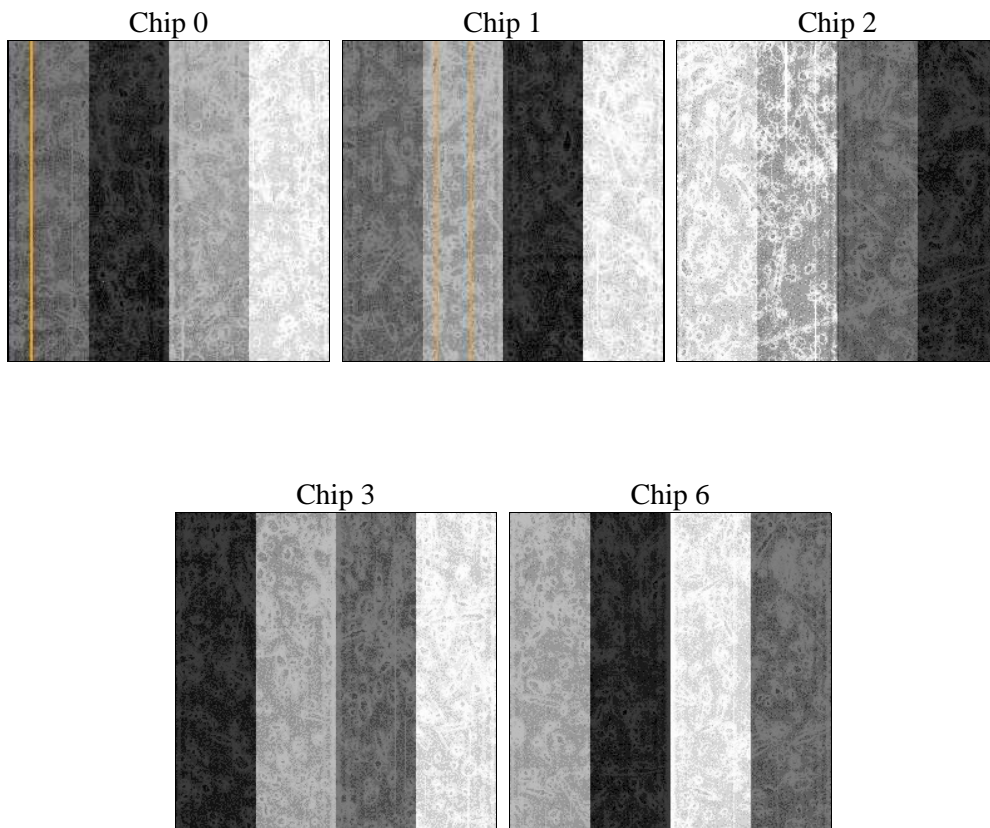
2 OBI

2.1 OBI

2.1.1 Images



2.1.2 Bias



2.1.3 Parameters

obi_num	0	Obi number	sched_exp_time	12400.000000	[s] Scheduled observation exposure time
ascdsver	8.4.5	Processing system revision	ontime	12533.299975902	Sum of GTIs [s]
caldbver	4.5.2	 	ontime0	12533.299975902	Sum of GTIs [s]
date	2012-10-02T13:42:51	Date and time of file creation	ontime1	12533.299975902	Sum of GTIs [s]
revision	3	Processing version of data	ontime2	12530.159015656	Sum of GTIs [s]
			ontime3	12533.299975902	Sum of GTIs [s]
			ontime6	12533.299975902	Sum of GTIs [s]
			l1events	478397	Number of level 1 events

2.1.4 Events

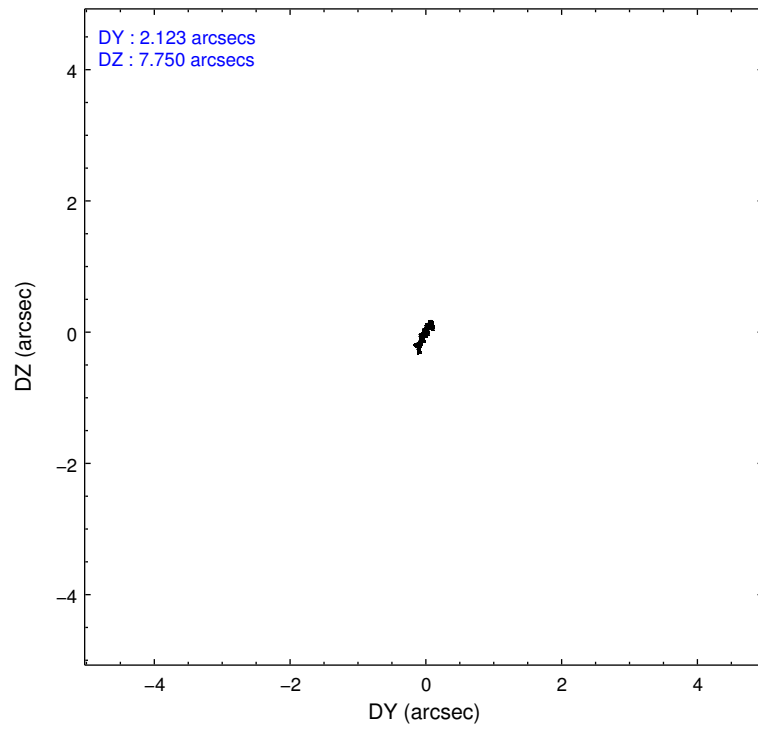
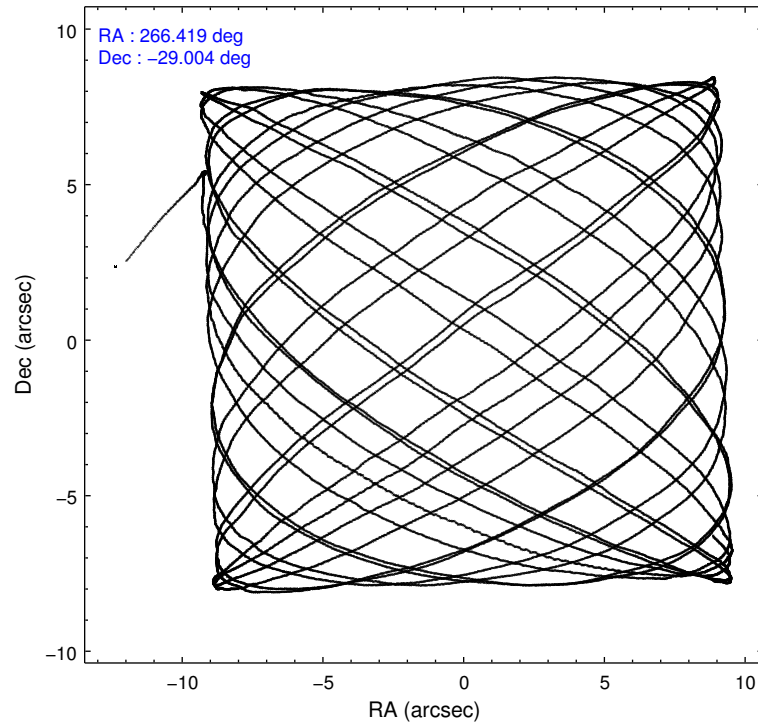
	ccd 0	ccd 1	ccd 2	ccd 3	ccd 6
level 1 events	97865	94640	94447	102523	88922
rejected events	69984	72965	75445	79294	76935
rejected %	71%	77%	79%	77%	86%

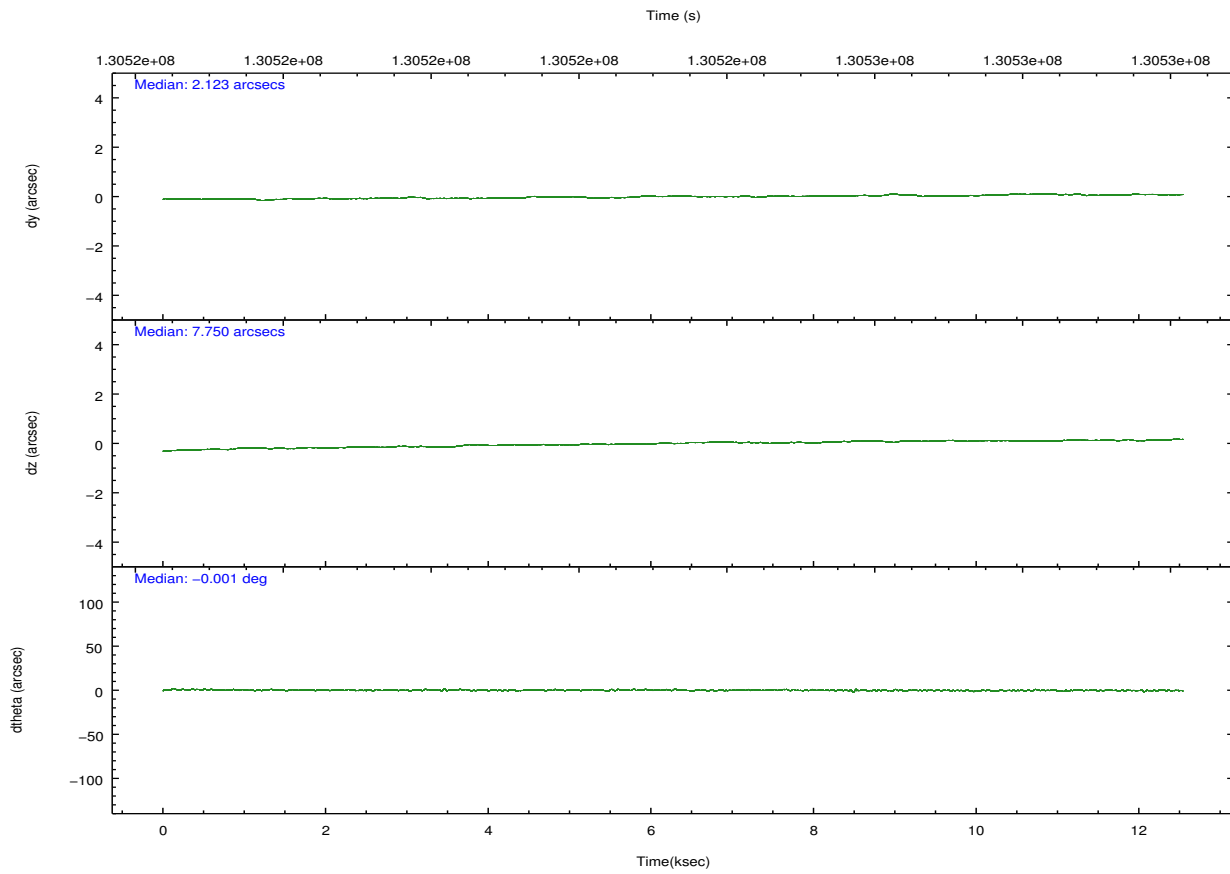
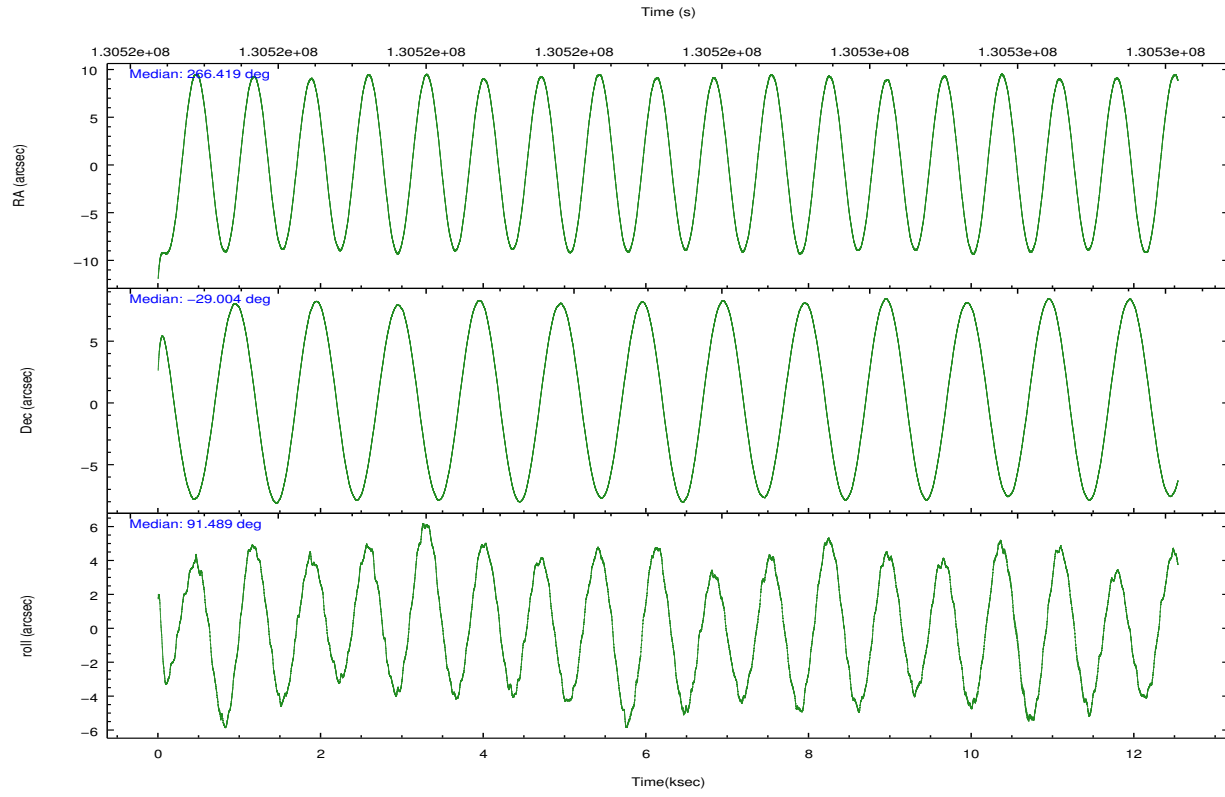
	ccd 0	ccd 1	ccd 2	ccd 3	ccd 6
grade 0 events	17005	12384	10684	13658	5554
	17%	13%	11%	13%	6%
grade 1 events	113	104	77	106	62
	0%	0%	0%	0%	0%
grade 2 events	4671	3794	3407	3915	2341
	4%	4%	3%	3%	2%
grade 3 events	1883	1599	1348	1650	1118
	1%	1%	1%	1%	1%
grade 4 events	1682	1570	1390	1533	1015
	1%	1%	1%	1%	1%
grade 5 events	3173	3471	3025	3431	3649
	3%	3%	3%	3%	4%
grade 6 events	3127	2800	2491	2847	2201
	3%	2%	2%	2%	2%
grade 7 events	66211	68918	72025	75383	72982
	67%	72%	76%	73%	82%

2.2 Compared Parameters

Parameter	Planned	Actual	Parameter	Planned	Actual
Instrument	ACIS	ACIS	Obspar format version number	7	7
Detector	ACIS-01236	ACIS-01236	Obspar file type	PREDICTED	ACTUAL
Grating	NONE	NONE	Obspar update status	NONE	UPDATED
Data mode	FAINT	FAINT	Number of optional ACIS chips dropped	0	0
Observation mode	POINTING	POINTING	On-chip summing requested	N	N
[deg] Pointing RA	266.435072	266.4186176033035	Subarray requested	NONE	NONE
[deg] Pointing Dec	-29.026754	-29.00344576234833	Alternating exposures requested	N	N
[deg] Pointing Roll	91.294423	91.49513465957929	[s] Primary exposure time	0.000000	3.1
[s] Window start time (MET)	130516984.184000	130516984.184000			
[s] Window stop time (MET)	130529584.184000	130529584.184000			
[mm] SIM focus pos	-0.782348	-0.7809083437167272			
[mm] SIM defocus	0	0.001439871863259334			
[mm] SIM translation stage pos	-233.592463	-233.5874344608287			
[mm] SIM translation stage offset	0	-0.005018542100998502			
[s] Observation start time (MET)	130517142.184000	130516052.42196			
Observation start date	2002-02-19T14:44:38	2002-02-19T14:27:32			
[s] Observation end time (MET)	130529542.184000	130530819.59756			
Observation end date	2002-02-19T18:11:18	2002-02-19T18:33:39			
Read mode	TIMED	TIMED			

2.3 Aspect



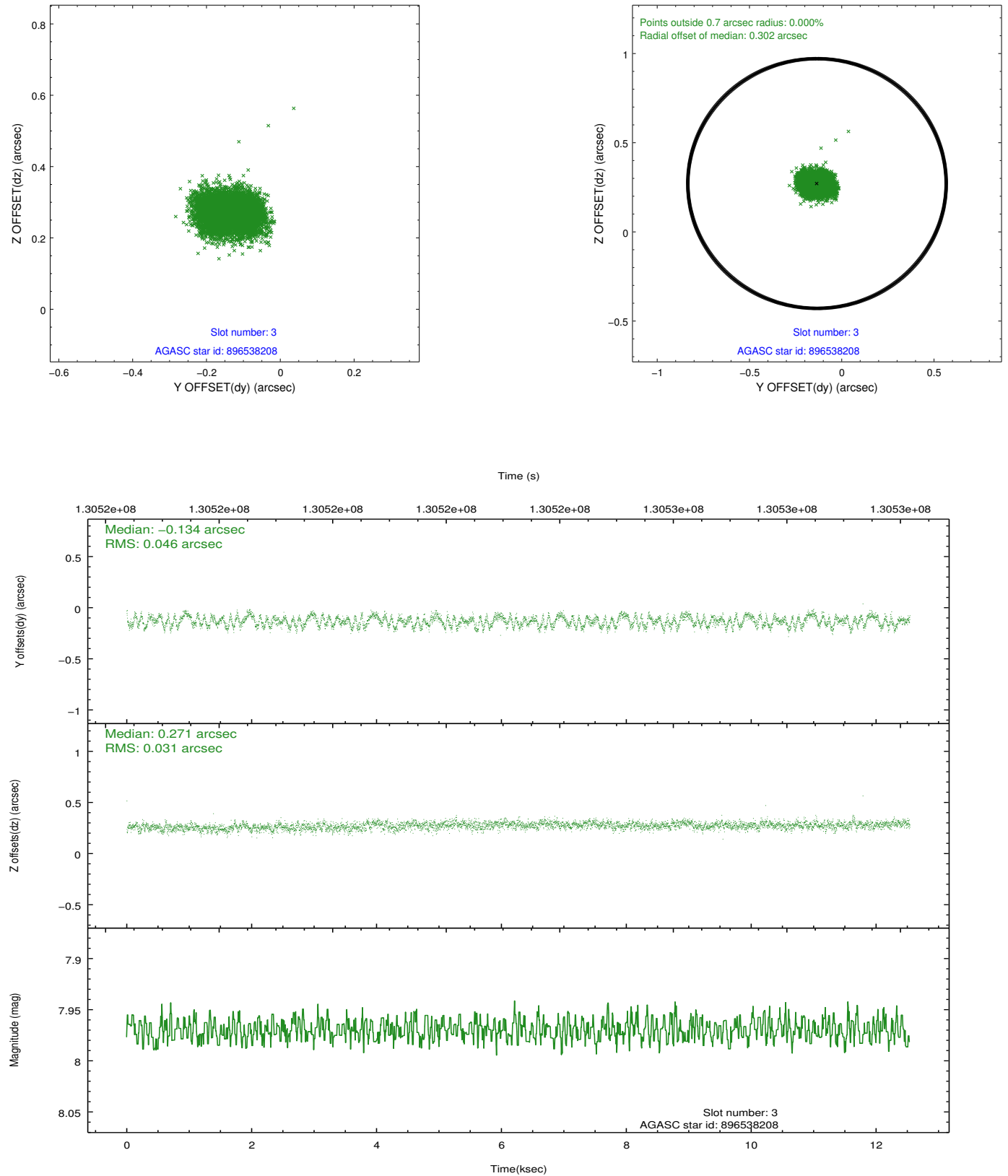


Slot Statistics

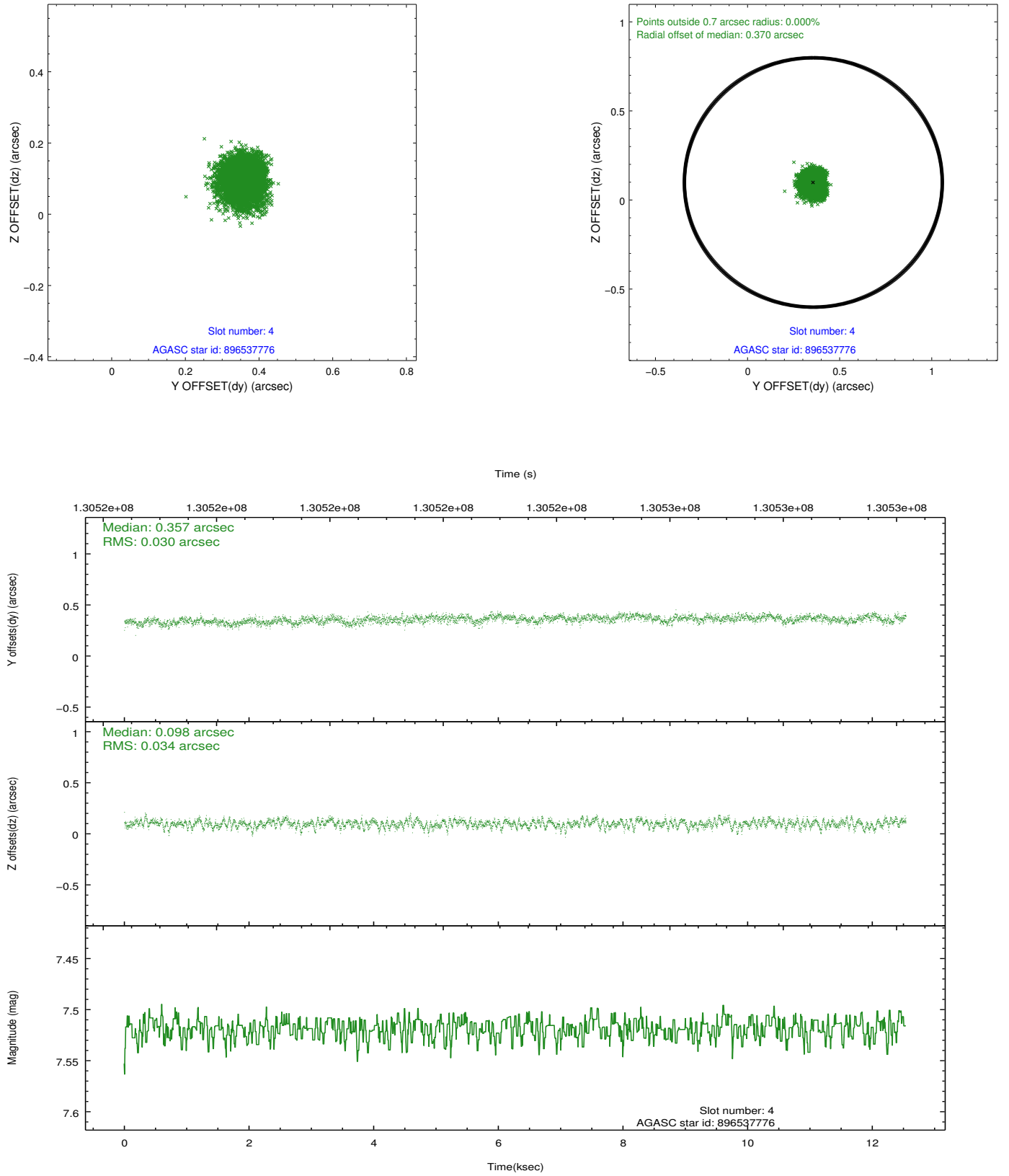
slot	status	id	mag	n_pts	med_dy	med_dz	dr1	dr2	ra	dec	mean_y	mean_z
0	FID	ACIS-I-1	7.24	3058	-0.028	0.059	0.016	0.029	0.000000	0.000000	937.66	-831.10
1	FID	ACIS-I-5	7.23	3059	-0.019	0.039	0.013	0.025	0.000000	0.000000	-1810.19	1066.23
2	FID	ACIS-I-6	7.26	3059	-0.042	-0.026	0.011	0.019	0.000000	0.000000	402.81	1711.07
3	GUIDE	896538208	7.97	6117	-0.134	0.271	0.060	0.093	267.176969	-28.671626	1219.21	-2371.47
4	GUIDE	896537776	7.52	6118	0.357	0.098	0.048	0.079	266.655684	-29.665673	-2313.96	-638.89
5	GUIDE	896540808	7.47	6118	0.090	-0.271	0.049	0.078	265.985401	-29.308604	-984.47	1433.39
6	GUIDE	896535464	9.35	6113	-0.115	0.198	0.095	0.151	266.962550	-28.408631	2184.37	-1719.82
7	GUIDE	896544560	9.03	6116	-0.195	-0.294	0.079	0.130	265.902975	-28.371895	2392.43	1631.25

2.4 Star Slots

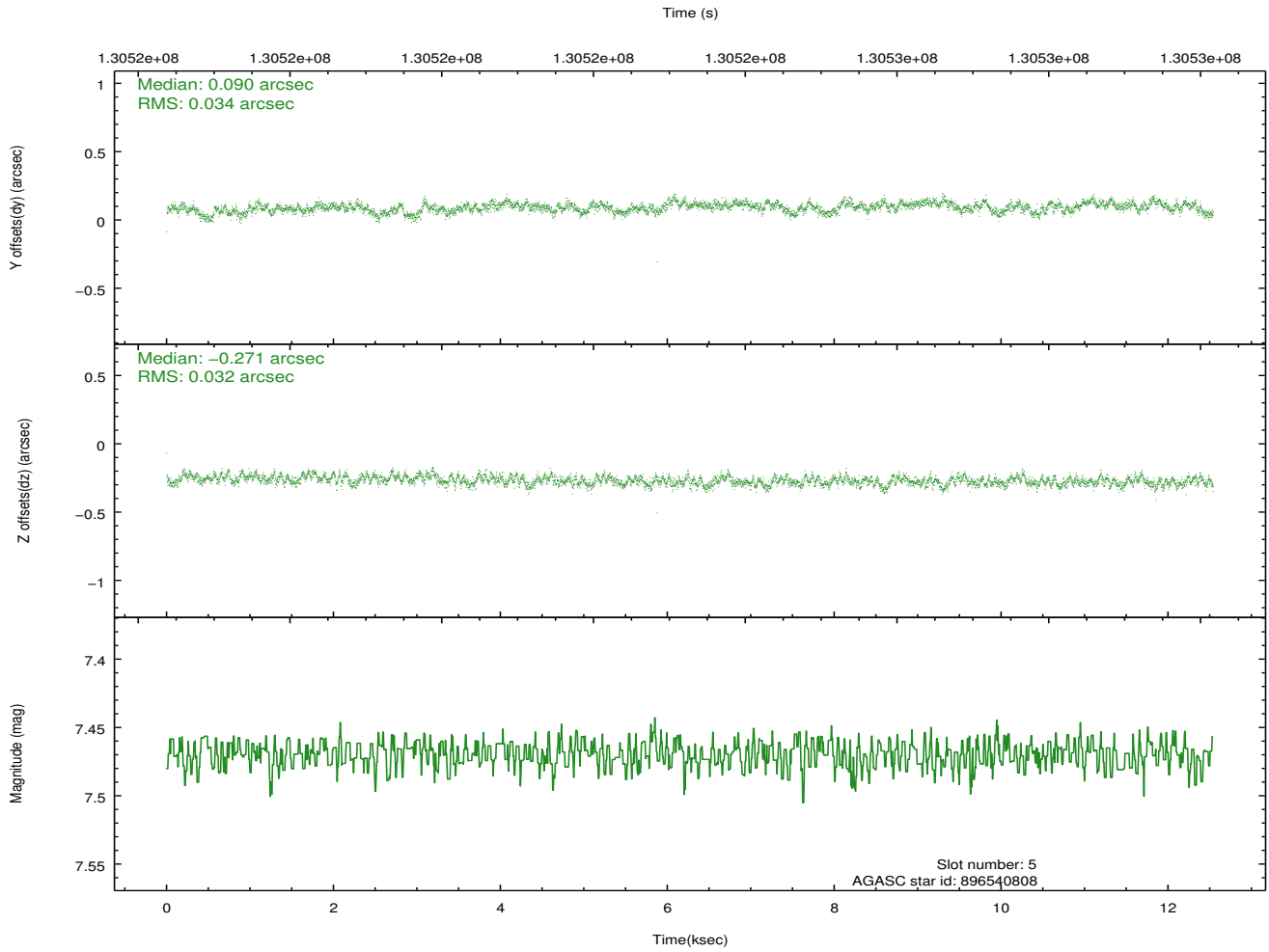
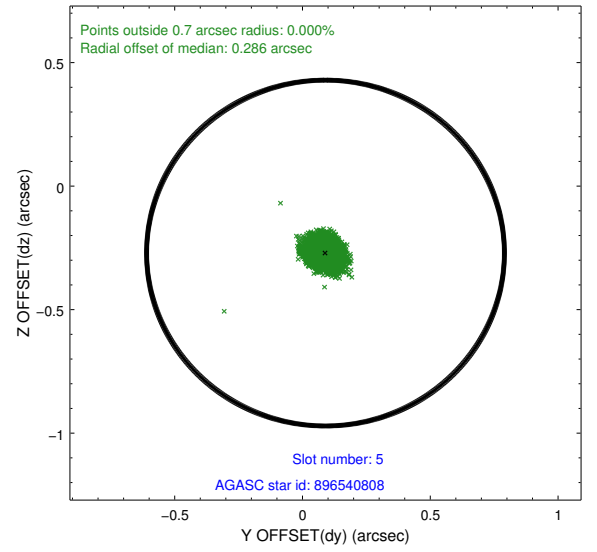
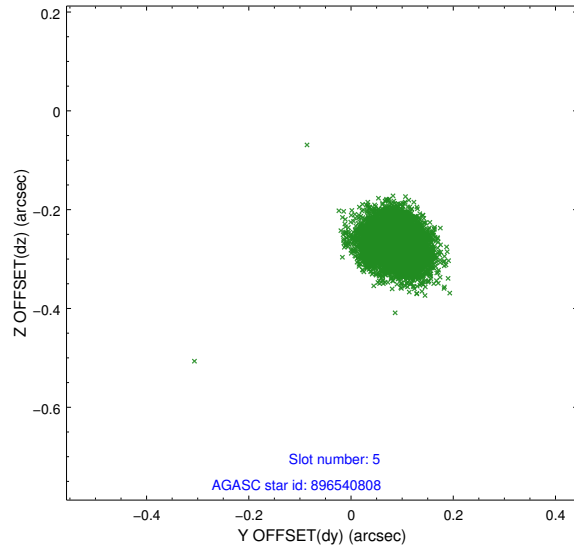
2.4.1 Slot 3



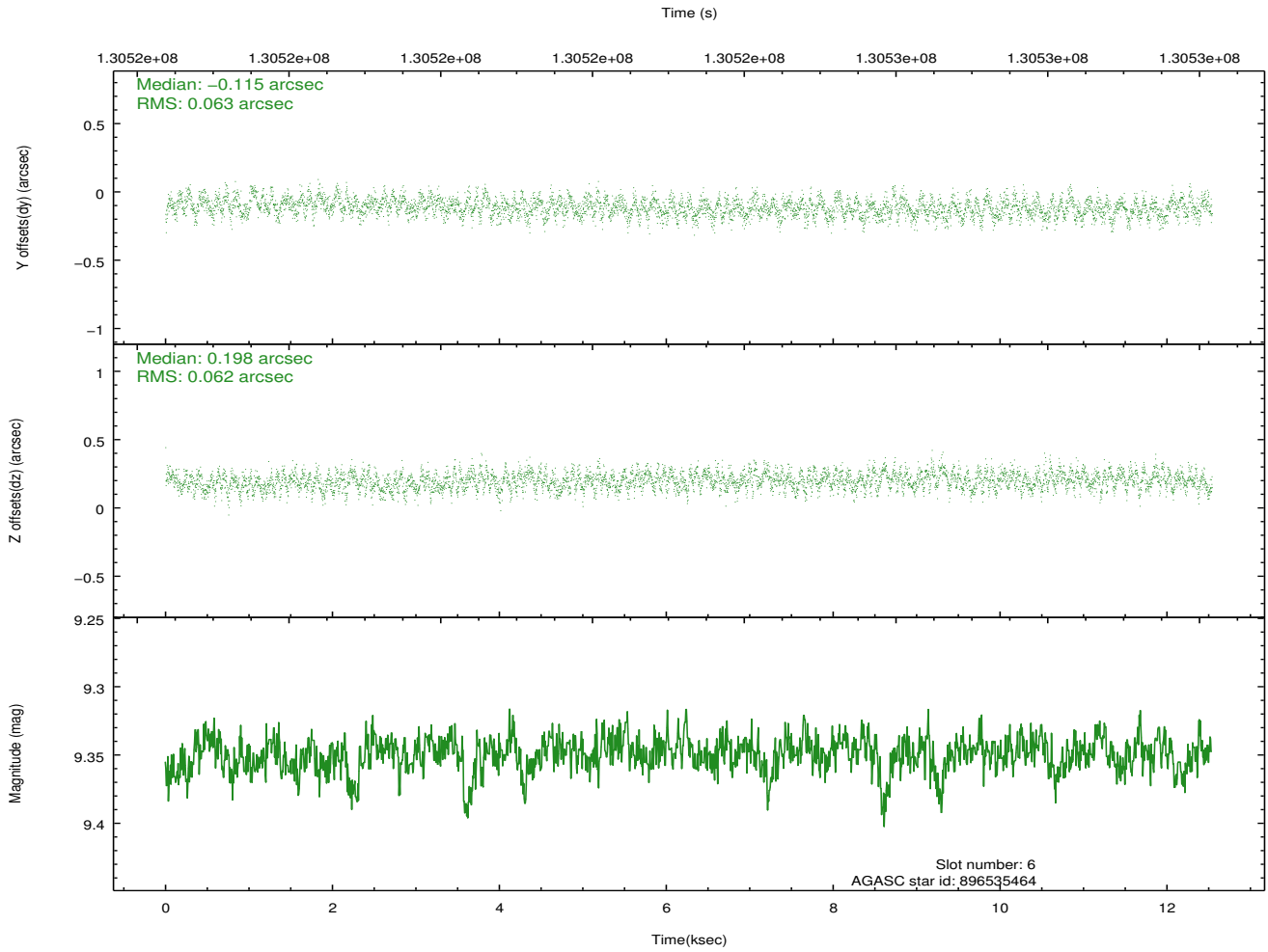
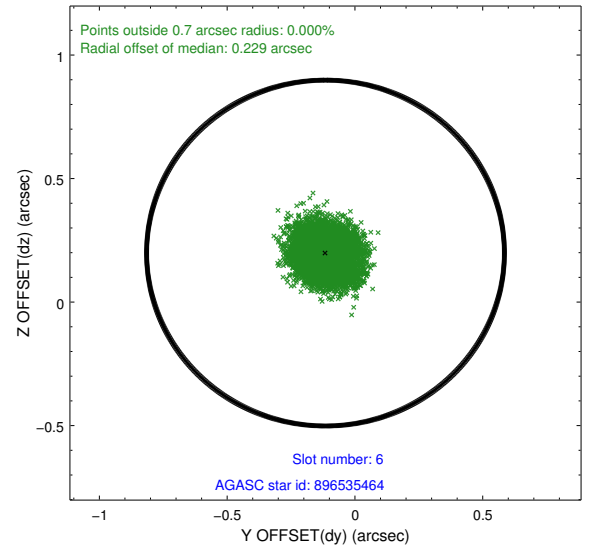
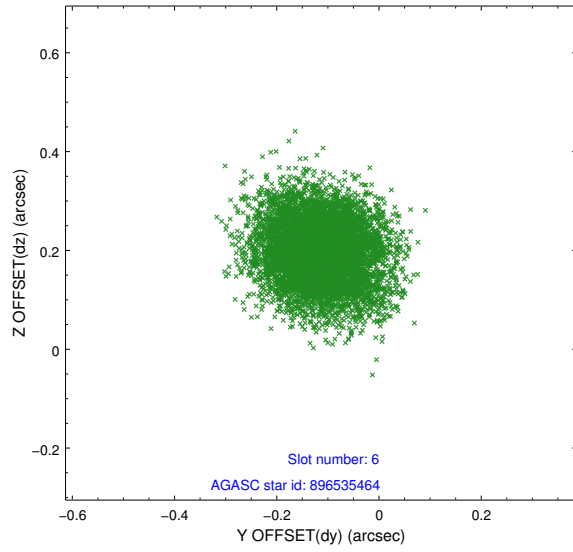
2.4.2 Slot 4



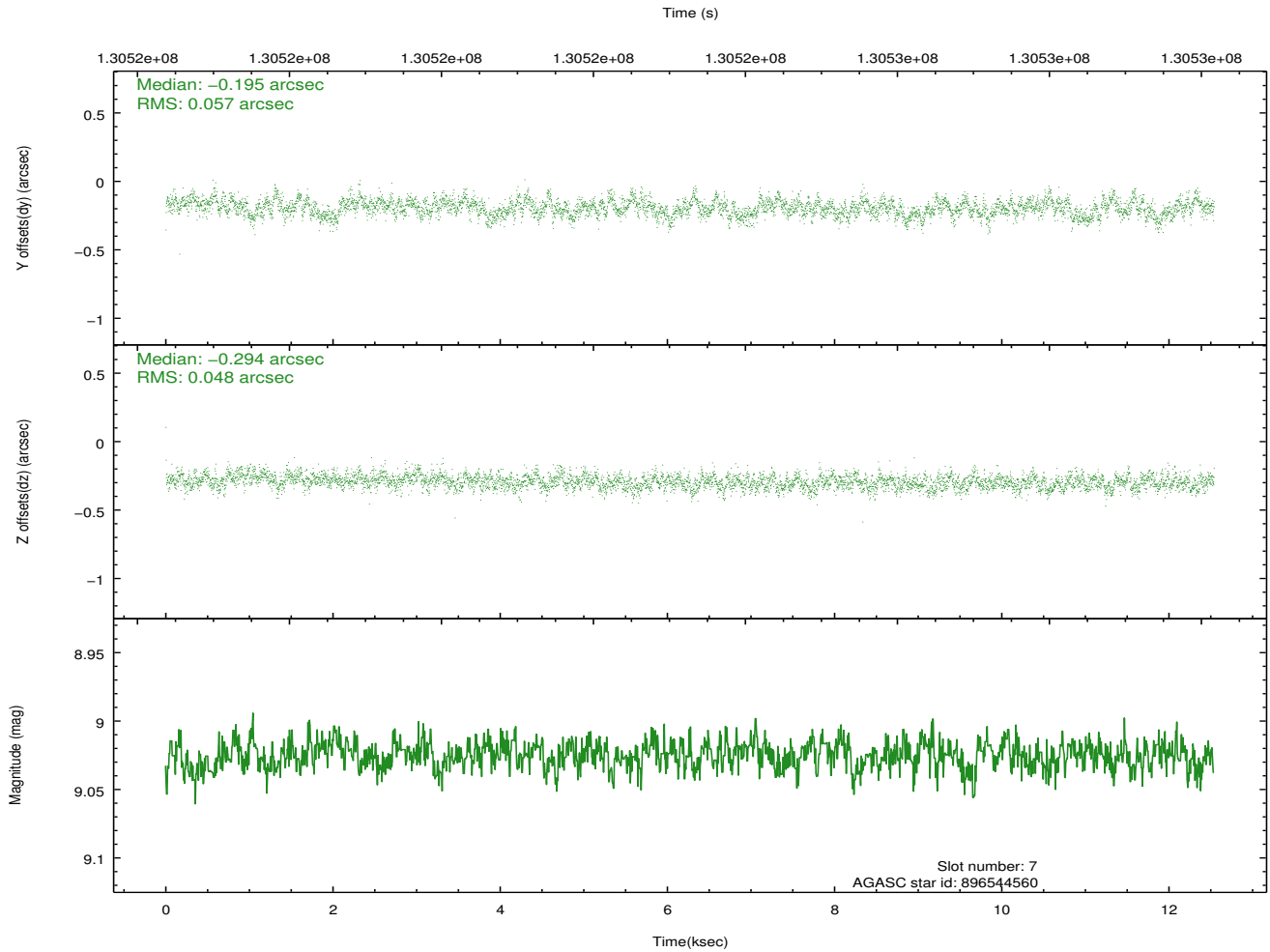
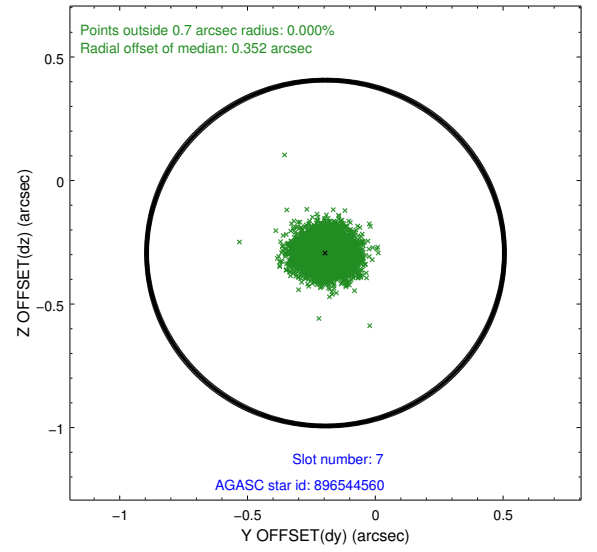
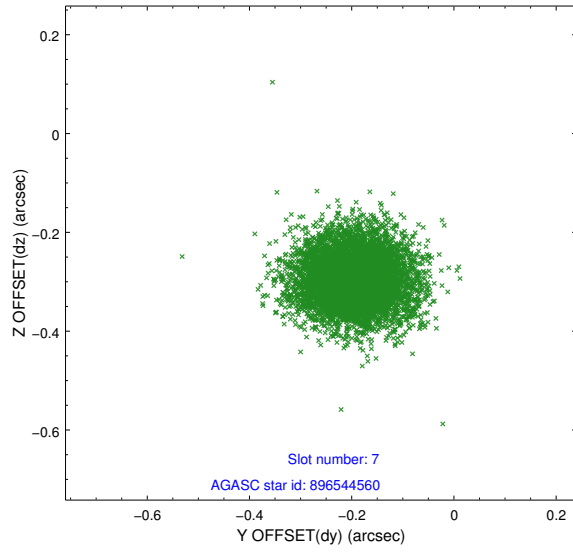
2.4.3 Slot 5



2.4.4 Slot 6

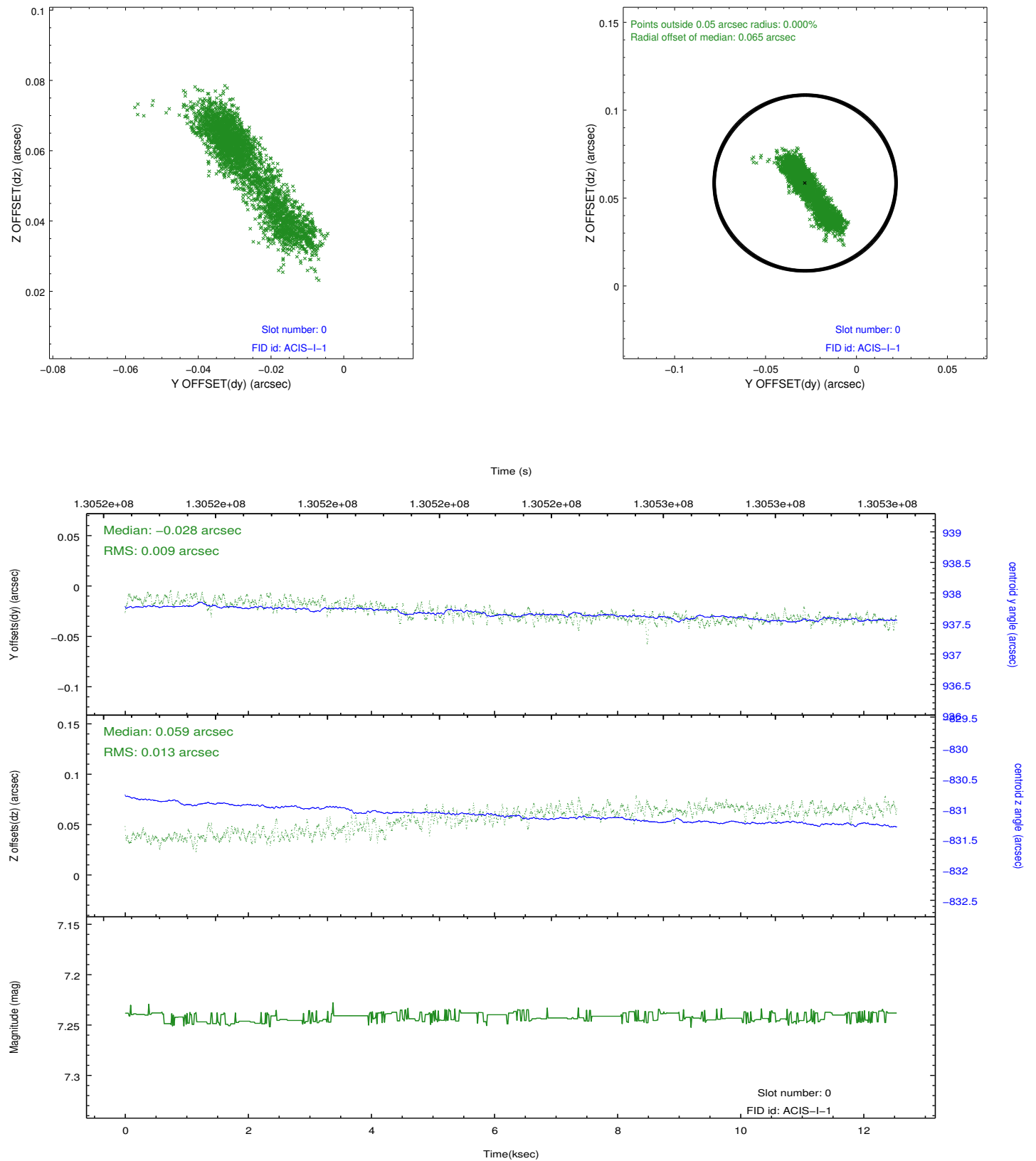


2.4.5 Slot 7

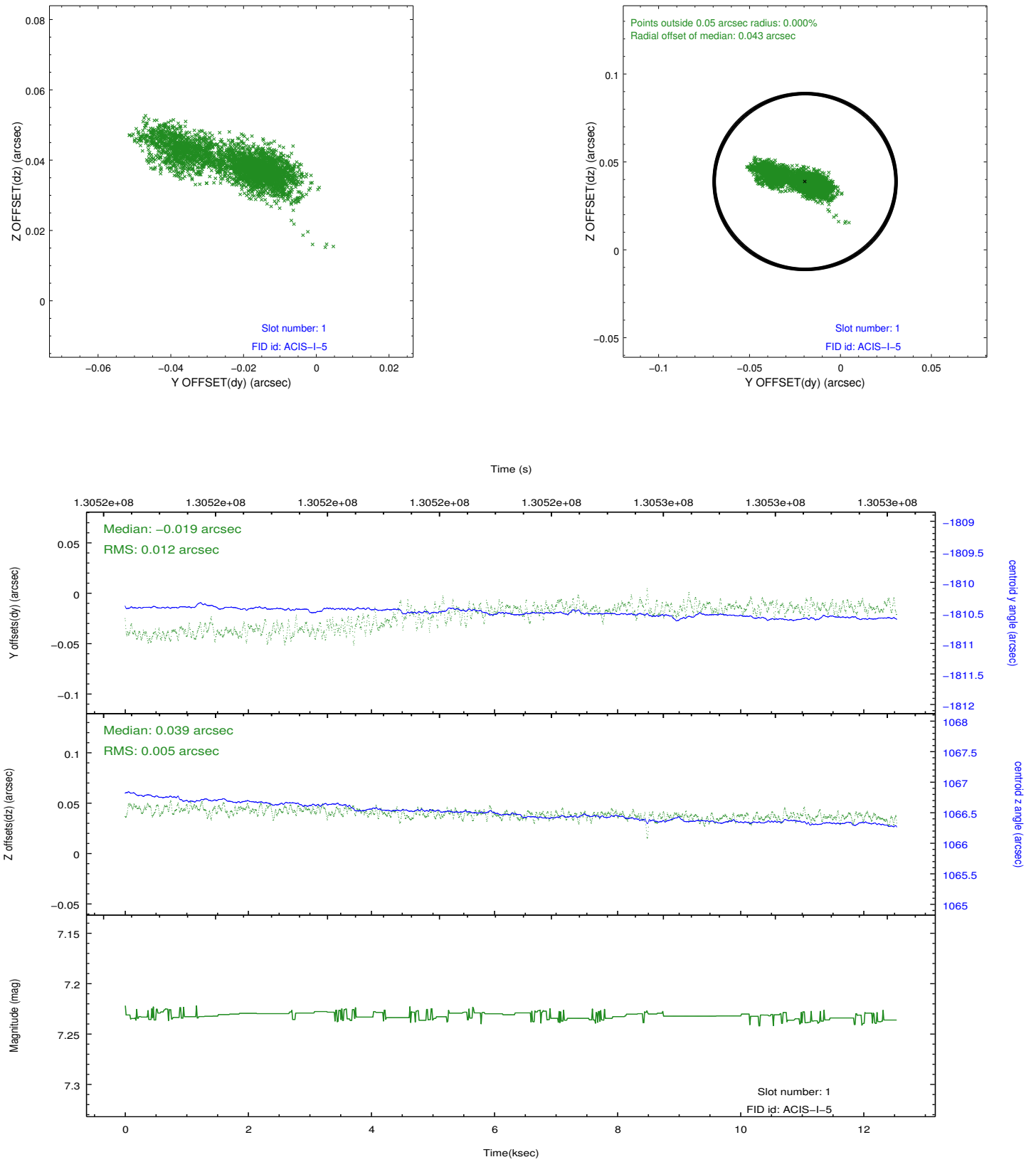


2.5 FID Slots

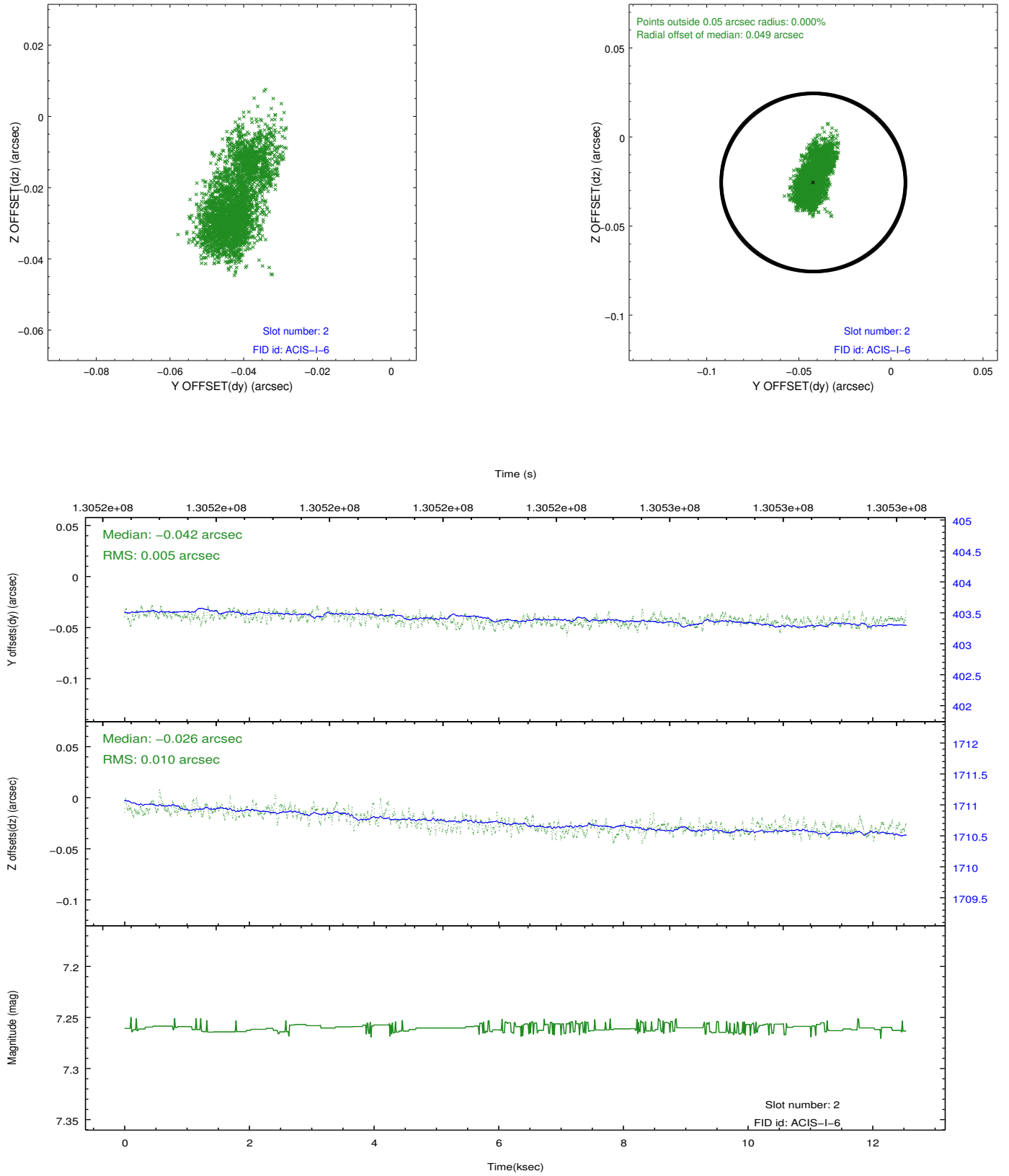
2.5.1 Slot 0



2.5.2 Slot 1



2.5.3 Slot 2



A Summary

A.1 Status

V&V Scientist	Jen Lauer
V&V Date (YYYY-MM-DD)	2012.10.03
V&V Edition	1
V&V Disposition and Status	OK
V&V Charge Time	12.533

A.2 Comments

The observation starts 15 minutes before and ends 20 minutes after the window constraint, completely covering the constraint time. Window constraint met.