

V&V Reference Report

L2 ASCDS Version : 7.6.9

Observation 2861 - L2 Version 001
Chandra X-Ray Center

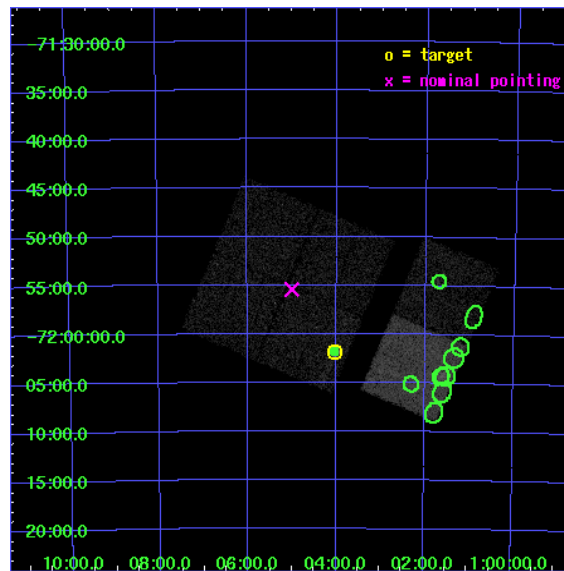
L2 Processing Date : Sep 20 2006

Contents

1	Front	2
2	OBI	3
2.1	OBI	3
2.1.1	Images	3
2.1.2	Bias	3
2.1.3	Parameters	4
2.1.4	Events	4
2.2	Compared Parameters	5
2.3	Aspect	6
2.4	Star Slots	9
2.4.1	Slot 3	9
2.4.2	Slot 4	10
2.4.3	Slot 5	11
2.4.4	Slot 6	12
2.4.5	Slot 7	13
2.5	FID Slots	14
2.5.1	Slot 0	14
2.5.2	Slot 1	15
2.5.3	Slot 2	16
3	Point Sources	17
A	Summary	18
A.1	Status	18
A.2	Comments	18

1 Front

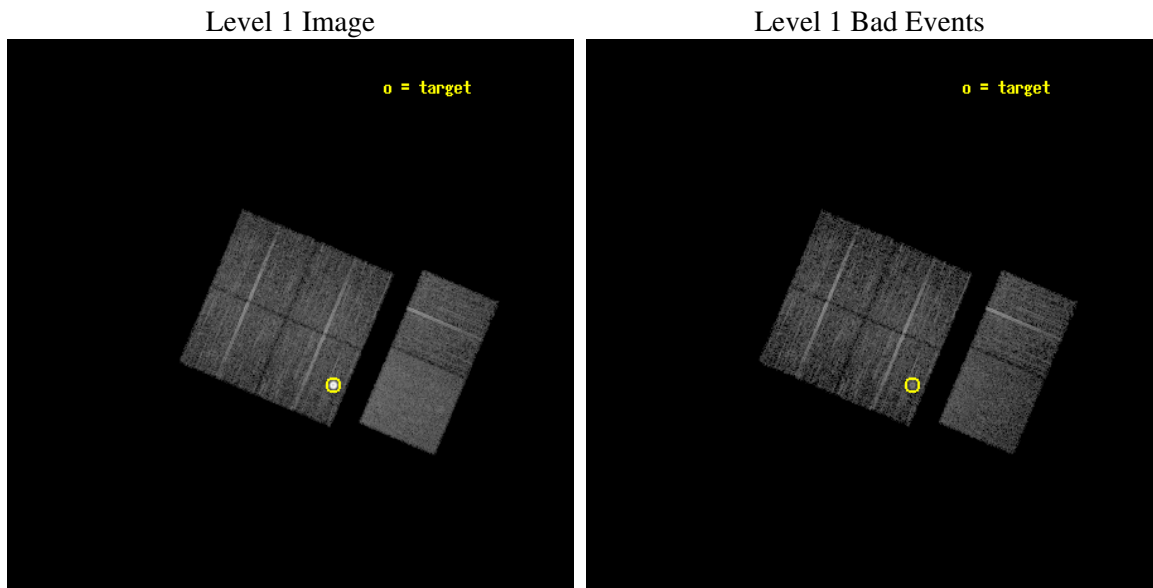
seq_num	590250
obs_id	2861
title	AO3B ACIS-I CALIBRATION OBSERVATIONS OF E0102-72
observer	Dr. CXC Calibration
object	E0102-72.3 [Chip I3, T=120, Offsets=-4,6,0]
dtcycle	0
cycle	P
ra_targ	16.01
dec_targ	-72.032028
ra_nom	16.250354958914
dec_nom	-71.924157458498
roll_nom	112.94678008184
revision	2
ontime	7657.5999714732
livetime	7560.6348297813
ontime0	7657.5999714732
ontime1	7657.5999714732
ontime2	7657.5999714732
ontime3	7657.5999714732
ontime6	7657.5999714732
ontime7	7657.5999714732
l2events	70646



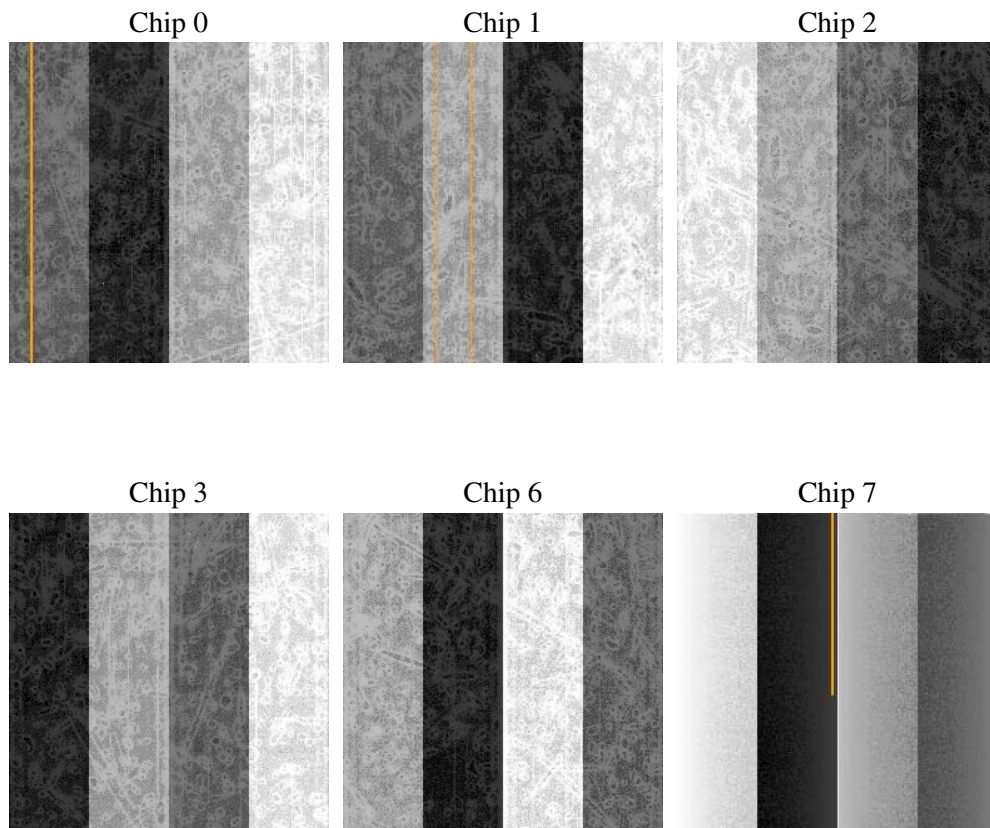
2 OBI

2.1 OBI

2.1.1 Images



2.1.2 Bias



2.1.3 Parameters

obi_num	0
ascdsver	7.6.9
caldbver	3.2.3
date	2006-09-20T22:35:35
revision	2

sched_exp_time	7900.000000
ontime	7661.7254236639
ontime0	7664.9664138854
ontime1	7664.9664138854
ontime2	7664.9664337635
ontime3	7661.7254236639
ontime6	7661.7254037857
ontime7	7661.7254037857
l1events	327690

2.1.4 Events

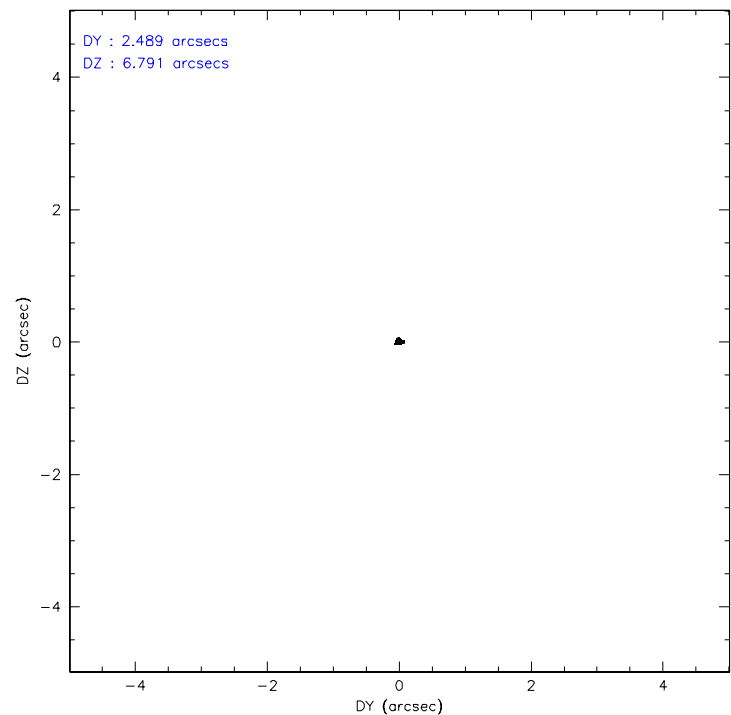
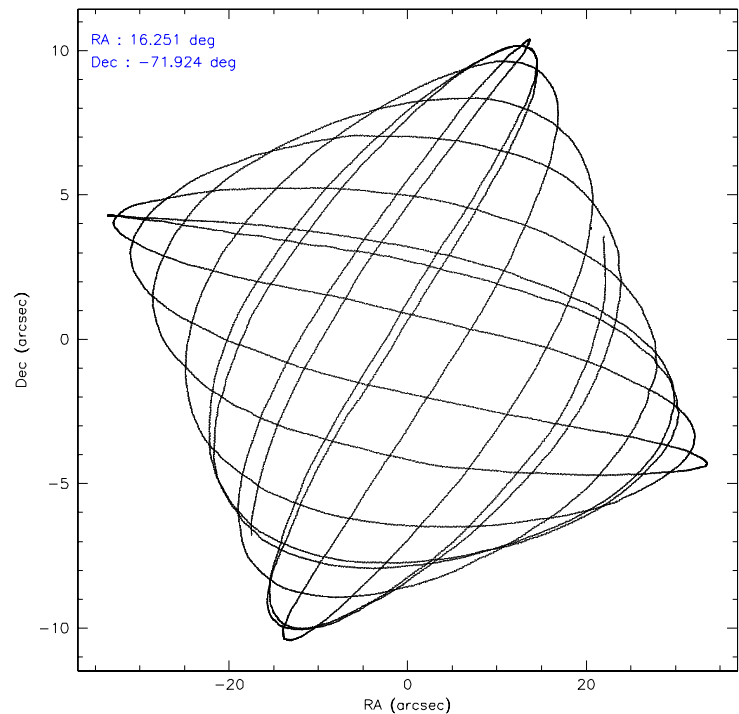
	ccd 0	ccd 1	ccd 2	ccd 3	ccd 6	ccd 7
level 1 events	45422	47164	48555	70745	50610	65194
rejected events	39589	40952	42863	43540	44470	40067
rejected %	87%	86%	88%	61%	87%	61%

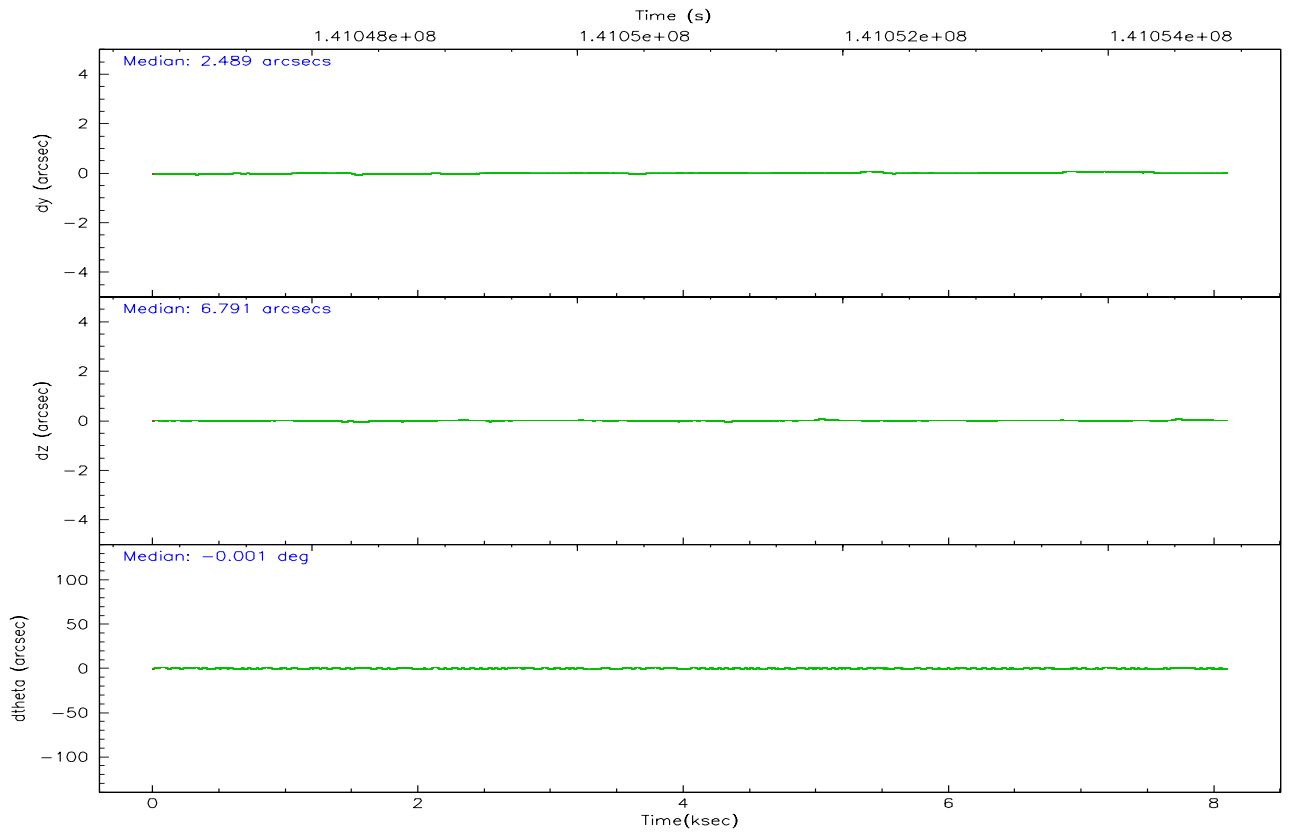
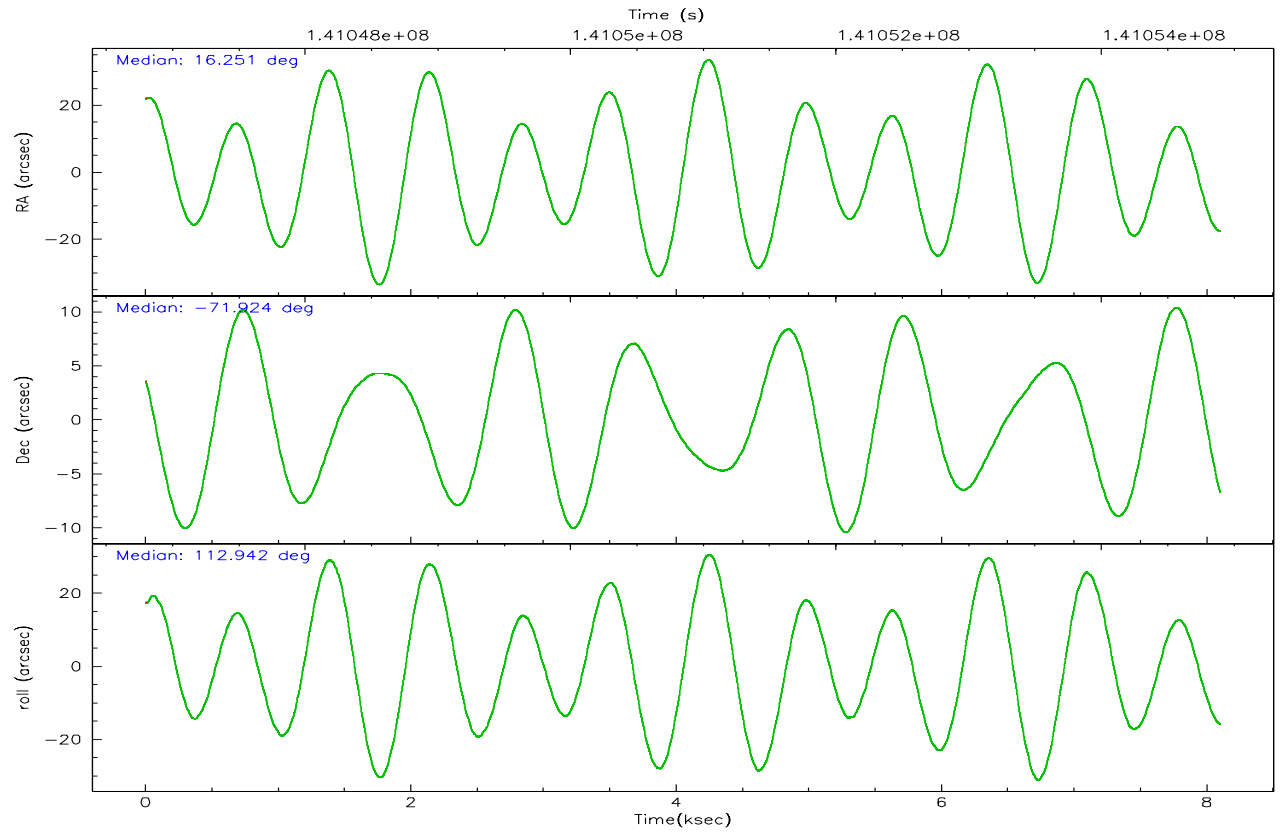
	ccd 0	ccd 1	ccd 2	ccd 3	ccd 6	ccd 7
grade 0 events	2438	2467	2418	21494	2579	1634
	5%	5%	4%	30%	5%	2%
grade 1 events	23	30	26	169	41	46
	0%	0%	0%	0%	0%	0%
grade 2 events	1274	1312	1233	2603	1202	6302
	2%	2%	2%	3%	2%	9%
grade 3 events	604	616	548	914	617	1358
	1%	1%	1%	1%	1%	2%
grade 4 events	484	602	512	964	592	1361
	1%	1%	1%	1%	1%	2%
grade 5 events	1889	1988	1663	2116	2269	4180
	4%	4%	3%	2%	4%	6%
grade 6 events	1043	1223	987	1258	1156	14496
	2%	2%	2%	1%	2%	22%
grade 7 events	37667	38926	41168	41227	42154	35817
	82%	82%	84%	58%	83%	54%

2.2 Compared Parameters

Parameter	Planned	Actual	Parameter	Planned	Actual
Instrument	ACIS	ACIS	Obspar format version number	6	6
Detector	ACIS-012367	ACIS-012367	Obspar file type	PREDICTED	ACTUAL
Grating	NONE	NONE	Obspar update status	NONE	UPDATED
Data mode	FAINT	FAINT	Number of optional ACIS chips dropped	0	0
Observation mode	POINTING	POINTING	On-chip summing requested	N	N
Pointing RA	16.321070	16.2503549589139	Subarray requested	NONE	NONE
Pointing Dec	-71.940588	-71.92415745849806	Alternating exposures requested	N	N
Pointing Roll	112.805323	112.946780081838	Primary exposure time	0.000000	3.2
Window start time	139276864.184000	139276864.184000			
Window stop time	141782464.184000	141782464.184000			
SIM focus pos (mm)	-0.782348	-0.7809083437167272			
SIM defocus (mm)	0	0.001439871863259334			
SIM translation stage pos (mm)	-233.592463	-233.5874344608287			
SIM translation stage offset (mm)	0	-0.005018542100998502			
Observation start time	141047003.184000	141046627.12527			
Observation start date	2002-06-21T11:42:19	2002-06-21T11:37:07			
Observation end time	141054903.184000	141055037.25062			
Observation end date	2002-06-21T13:53:59	2002-06-21T13:57:17			
Read mode	TIMED	TIMED			

2.3 Aspect



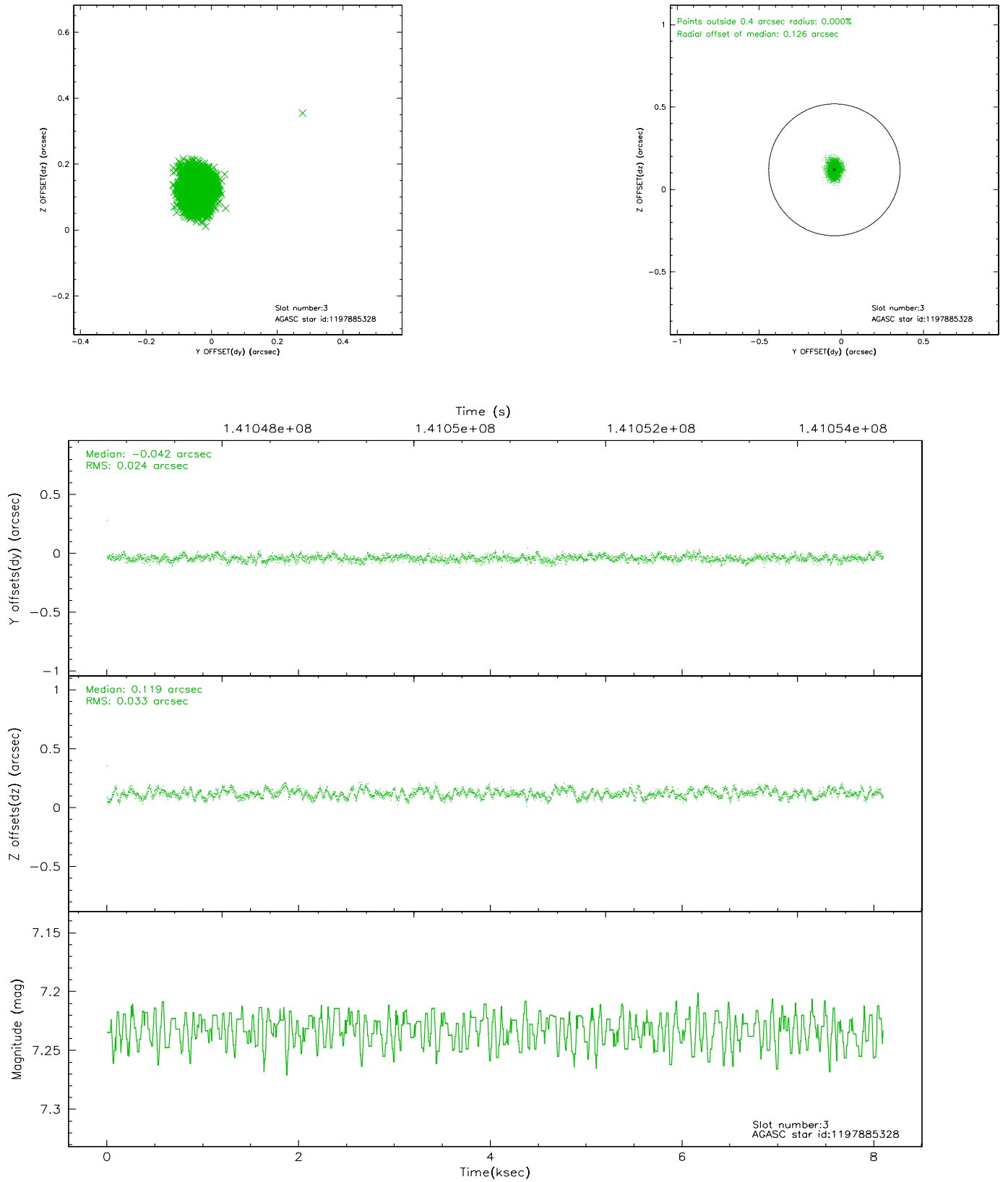


Slot Statistics

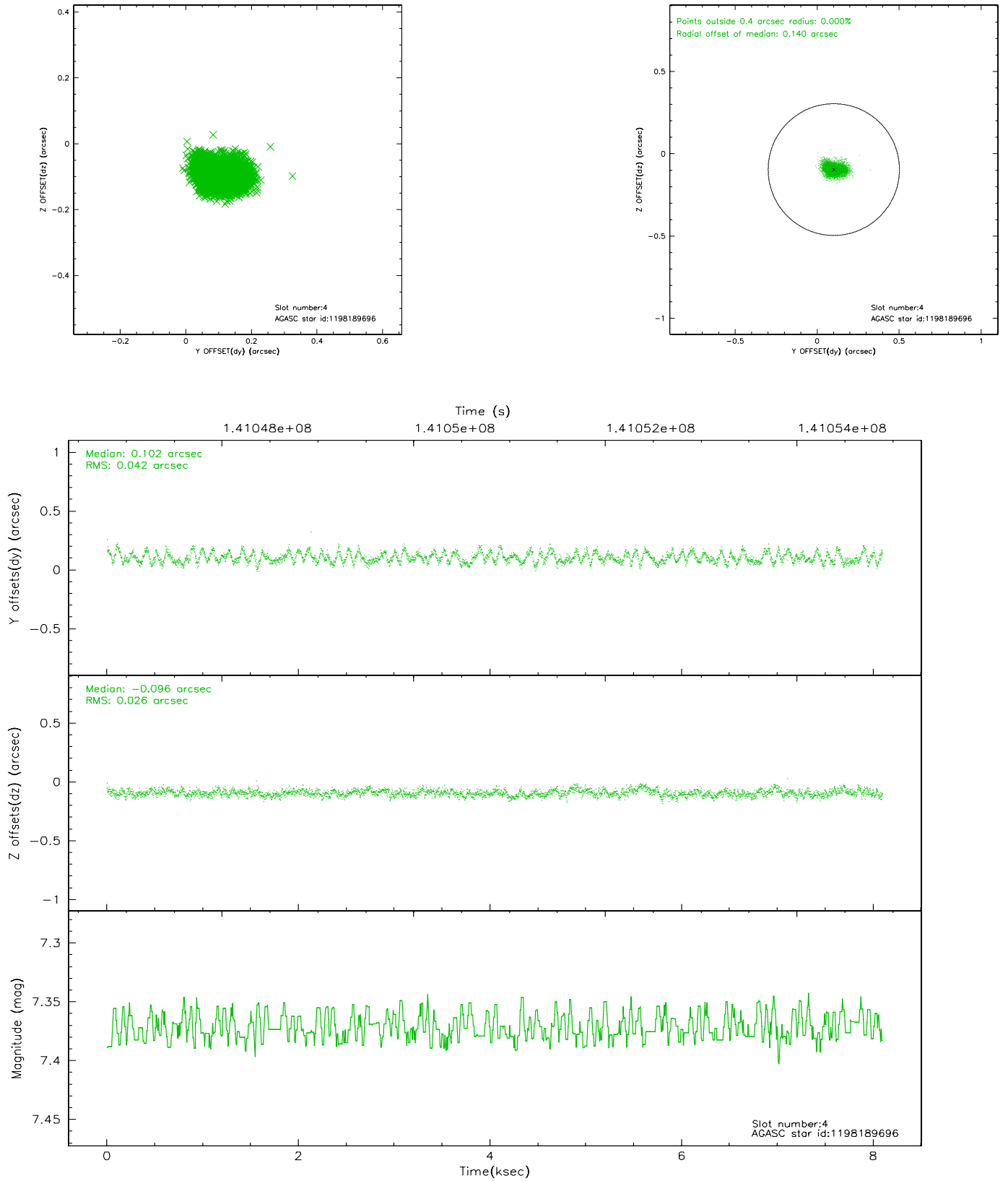
slot	status	id	mag	n_pts	med_dy	med_dz	dr1	dr2	ra	dec	mean_y	mean_z
0	FID	ACIS-I-1	7.25	1976	-0.021	0.039	0.006	0.009	0.000000	0.000000	937.28	-830.16
1	FID	ACIS-I-5	7.24	1976	-0.022	0.042	0.006	0.010	0.000000	0.000000	-1810.40	1067.05
2	FID	ACIS-I-6	7.26	1976	-0.048	-0.010	0.006	0.011	0.000000	0.000000	402.10	1712.23
3	GUIDE	1197885328	7.23	3951	-0.042	0.119	0.043	0.068	16.283090	-71.733943	703.03	-248.05
4	GUIDE	1198189696	7.37	3951	0.102	-0.096	0.053	0.084	15.223750	-72.697522	-2065.80	2143.96
5	GUIDE	1197750936	7.56	3951	-0.061	-0.115	0.043	0.069	15.387940	-71.549550	1702.12	439.06
6	GUIDE	1197884712	8.30	3951	0.046	-0.011	0.053	0.084	16.087398	-72.252690	-935.73	672.96
7	GUIDE	1197878768	9.62	3948	-0.047	0.108	0.098	0.158	16.656786	-71.304581	1960.10	-1242.95

2.4 Star Slots

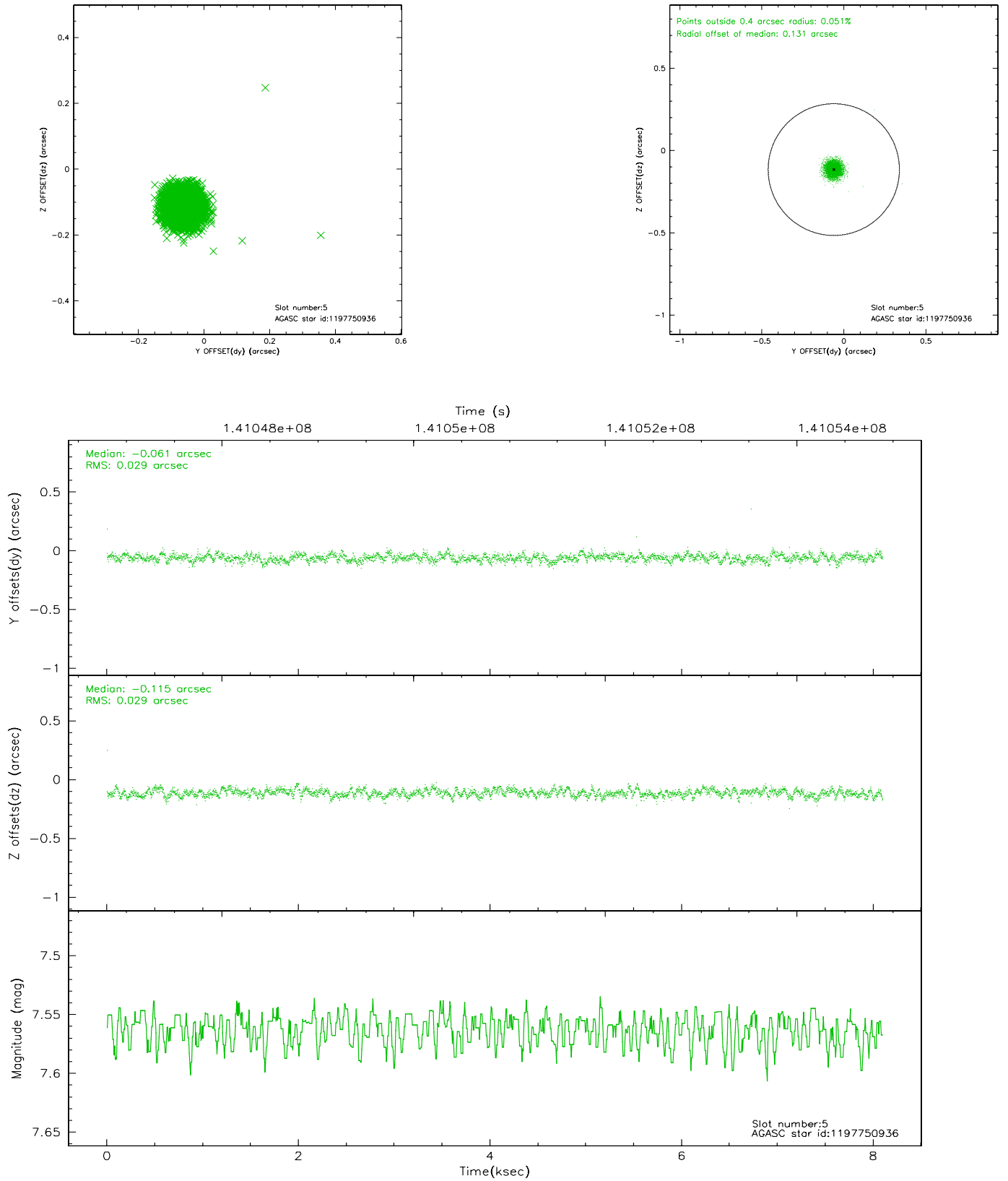
2.4.1 Slot 3



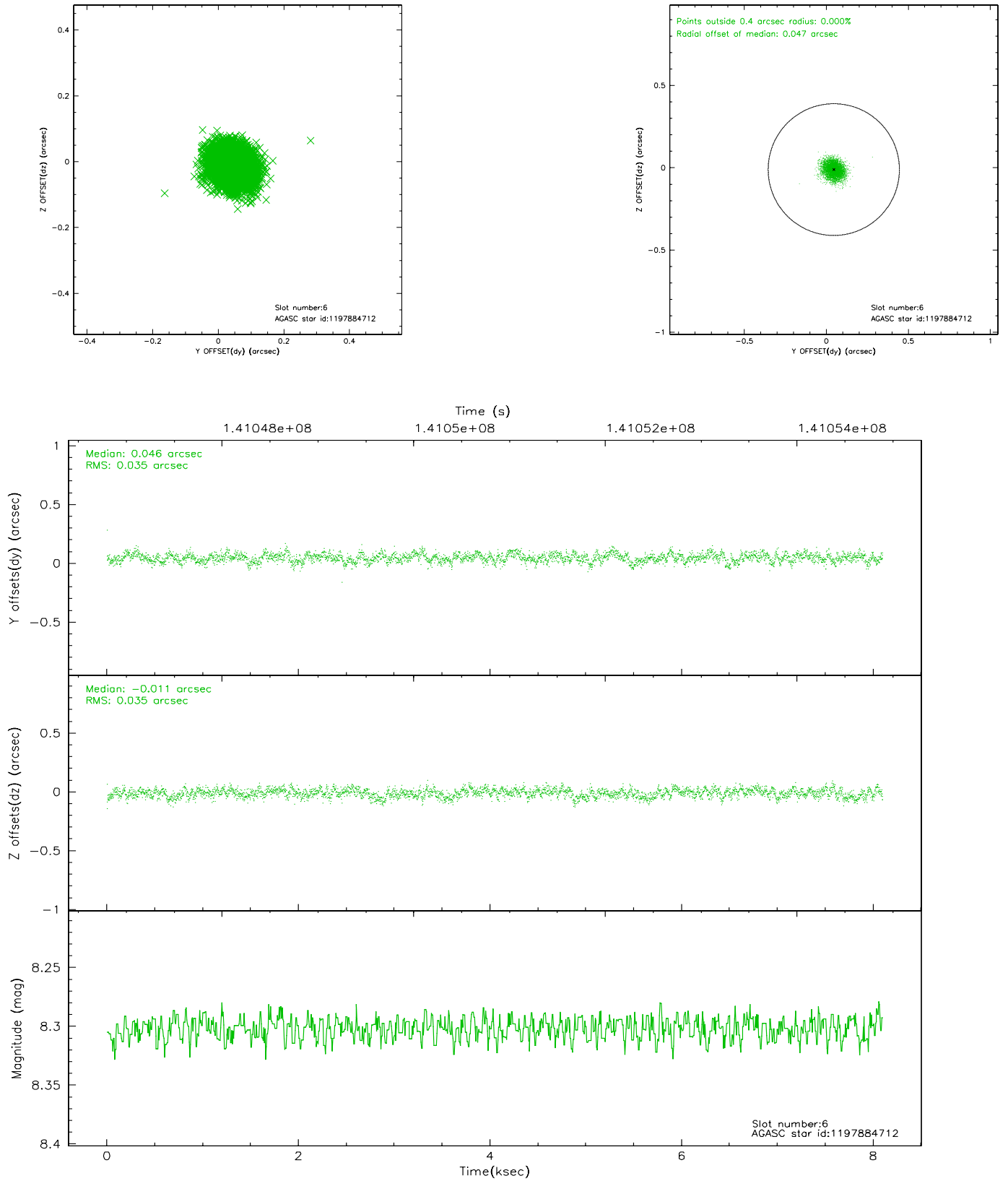
2.4.2 Slot 4



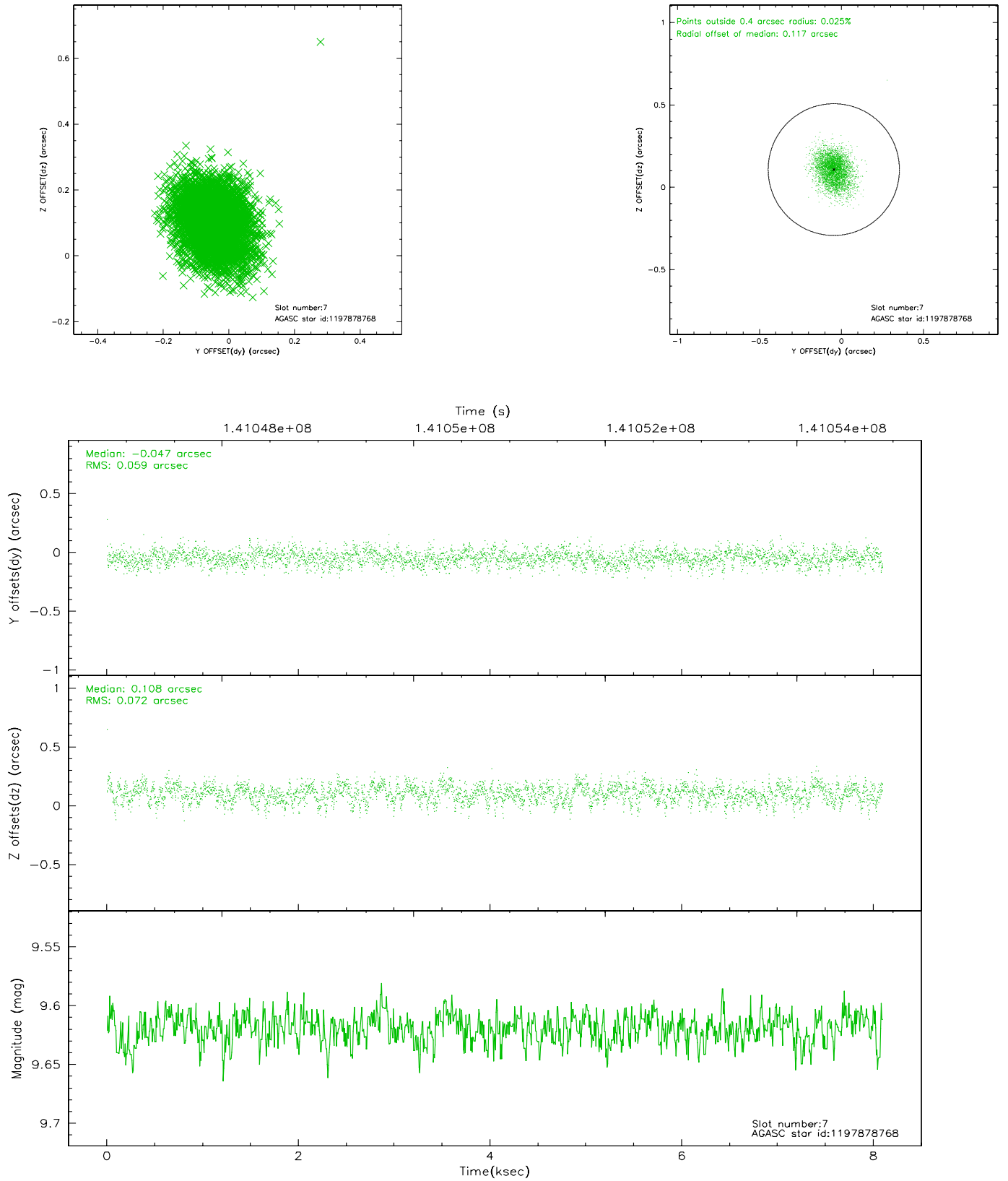
2.4.3 Slot 5



2.4.4 Slot 6

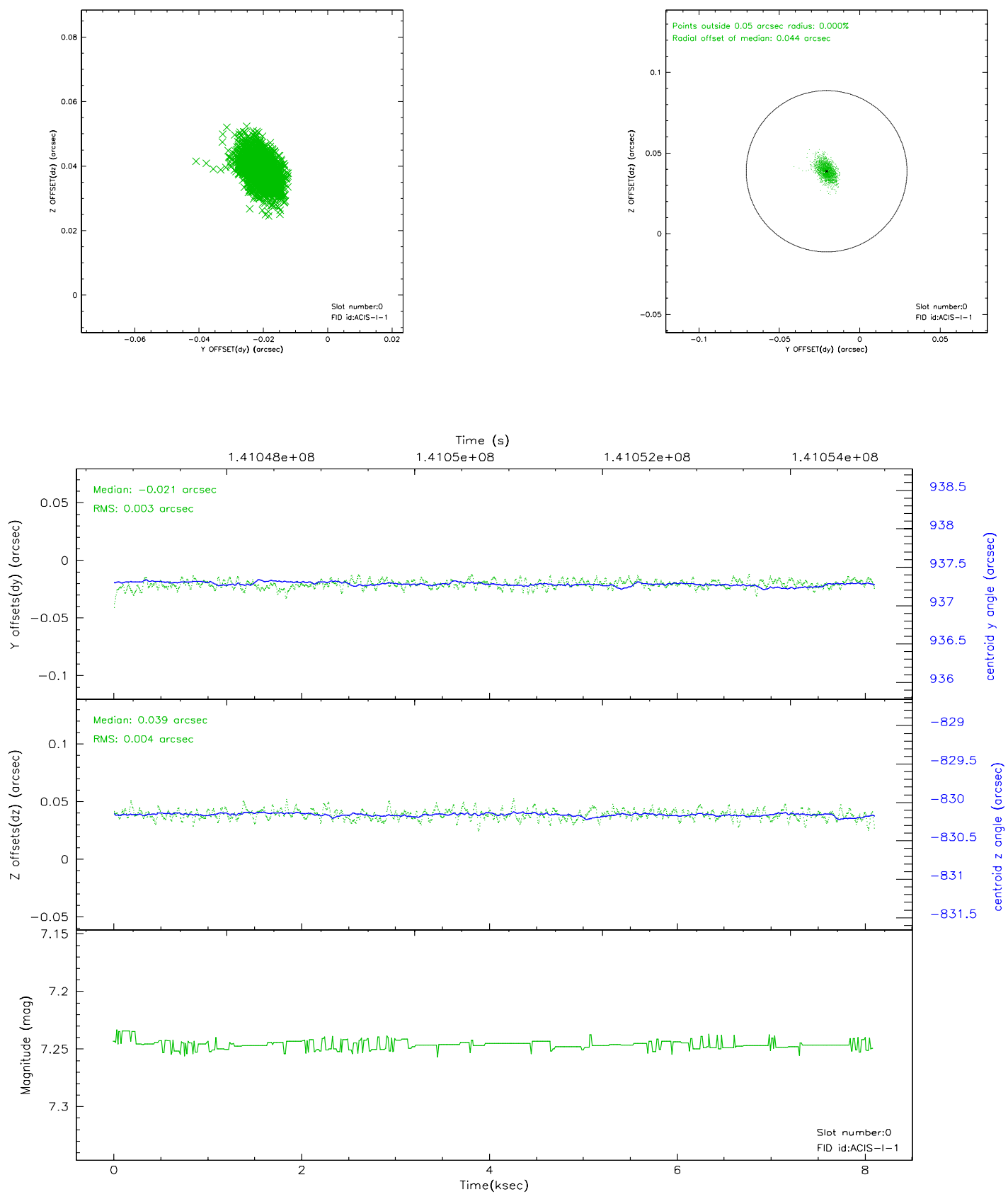


2.4.5 Slot 7

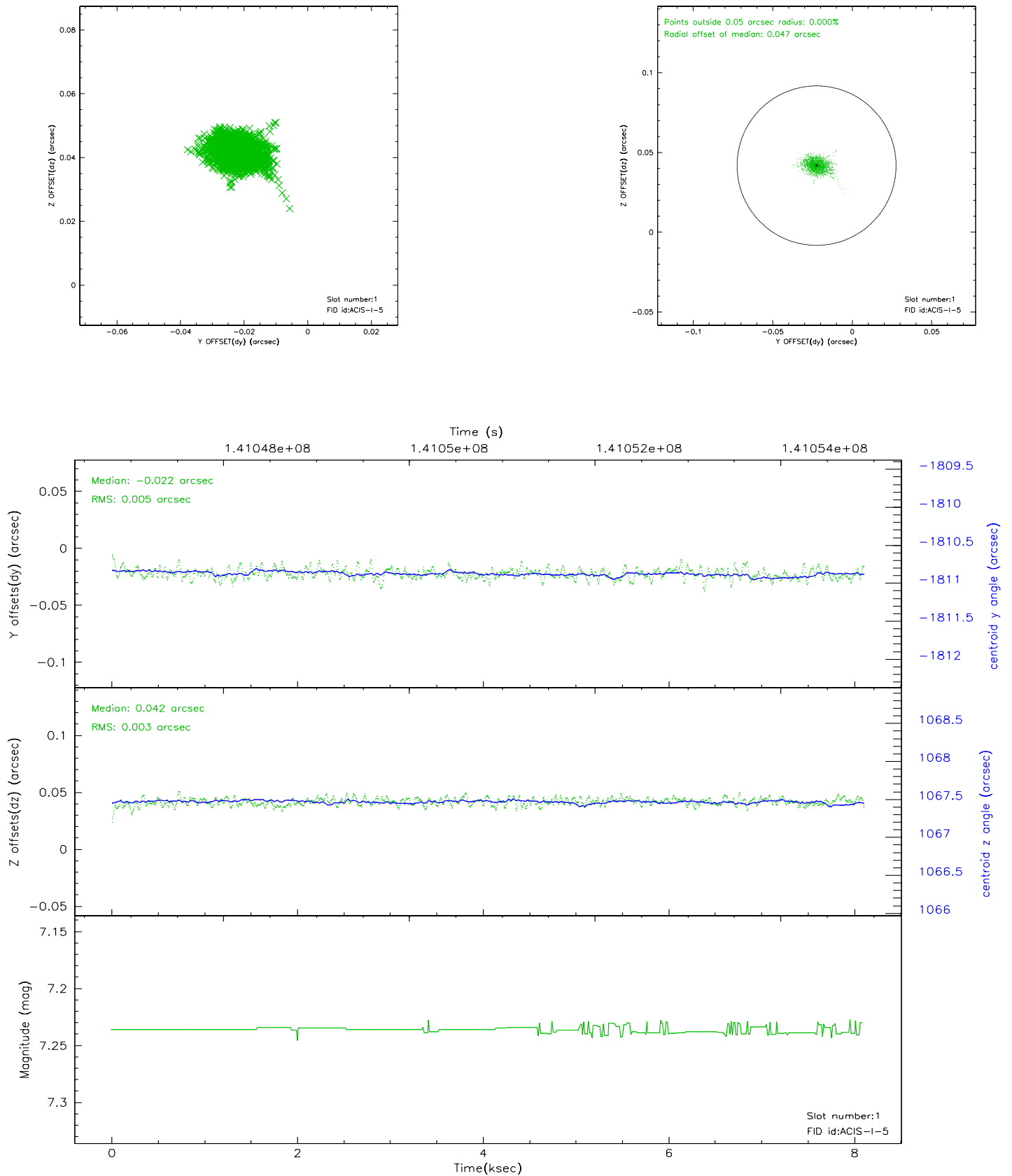


2.5 FID Slots

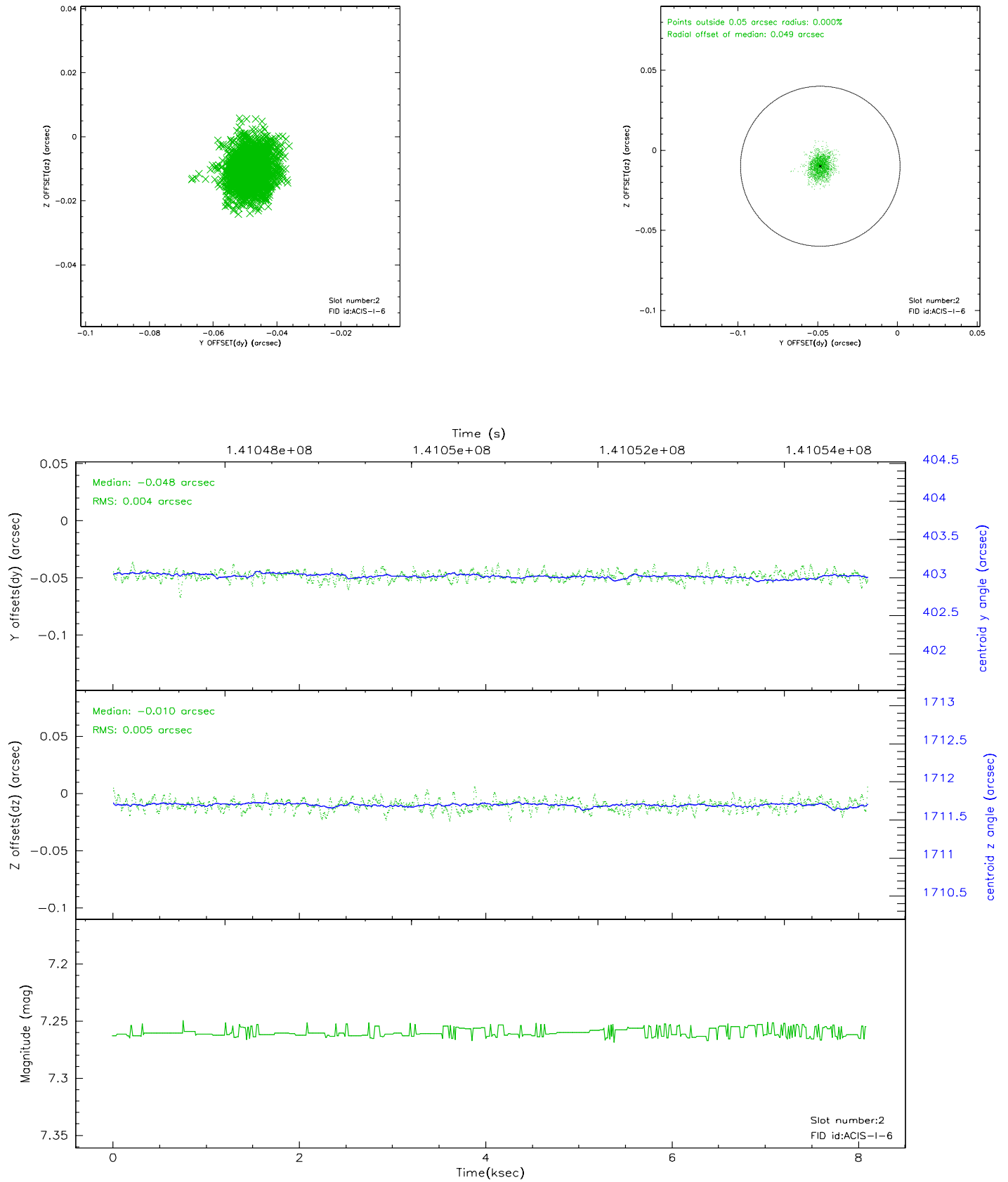
2.5.1 Slot 0



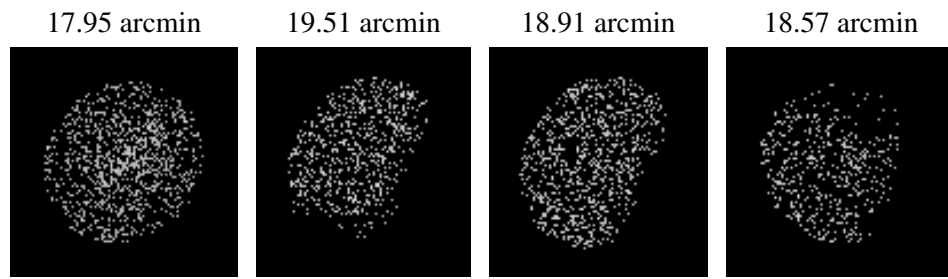
2.5.2 Slot 1



2.5.3 Slot 2



3 Point Sources



A Summary

A.1 Status

V&V Scientist	Beth Sundheim
V&V Date (YYYY-MM-DD)	2006.09.21
V&V Edition	1
V&V Disposition and Status	OK
V&V Charge Time	7.66

A.2 Comments

Window constraint satisfied.