

V&V Reference Report

L2 ASCDS Version : 7.6.9

Observation 2851 - L2 Version 001
Chandra X-Ray Center

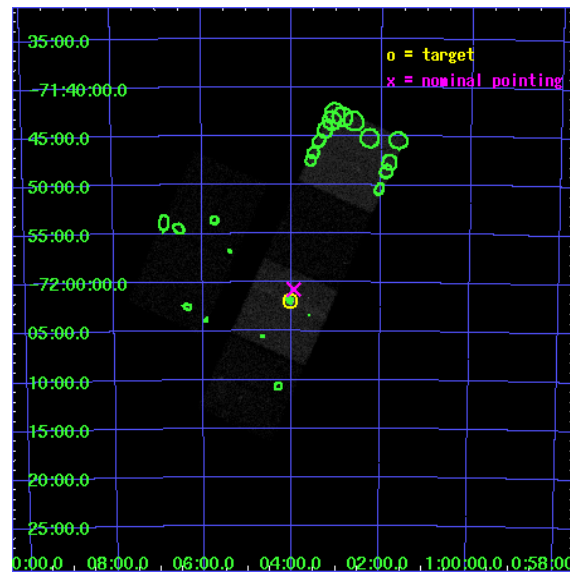
L2 Processing Date : Sep 19 2006

Contents

1	Front	2
2	OBI	3
2.1	OBI	3
2.1.1	Images	3
2.1.2	Bias	3
2.1.3	Parameters	4
2.1.4	Events	4
2.2	Compared Parameters	5
2.3	Aspect	6
2.4	Star Slots	9
2.4.1	Slot 3	9
2.4.2	Slot 4	10
2.4.3	Slot 5	11
2.4.4	Slot 6	12
2.4.5	Slot 7	13
2.5	FID Slots	14
2.5.1	Slot 0	14
2.5.2	Slot 1	15
2.5.3	Slot 2	16
3	Point Sources	17
A	Summary	18
A.1	Status	18
A.2	Comments	18

1 Front

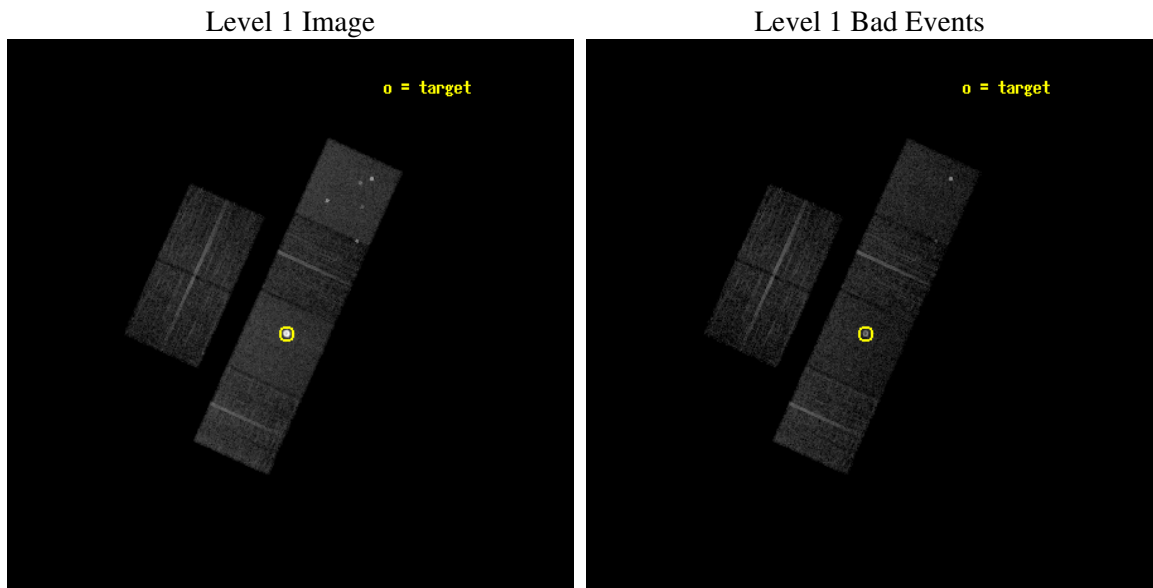
seq_num	590240
obs_id	2851
title	AO3B ACIS-S CALIBRATION OBSERVATIONS OF E0102-72
observer	Dr. CXC Calibration
object	E0102-72.3 [Chip S3, T=120, Offsets=-1,0,0]
dtcycle	0
cycle	P
ra_targ	16.01
dec_targ	-72.032028
ra_nom	15.987482235403
dec_nom	-72.012425627617
roll_nom	114.21181973722
revision	2
ontime	7654.3999714851
livetime	7557.4753501199
ontime2	7651.159011215
ontime3	7654.3999714851
ontime5	7654.3999714851
ontime6	7654.3999714851
ontime7	7654.3999714851
ontime8	7651.1590311229
l2events	131775



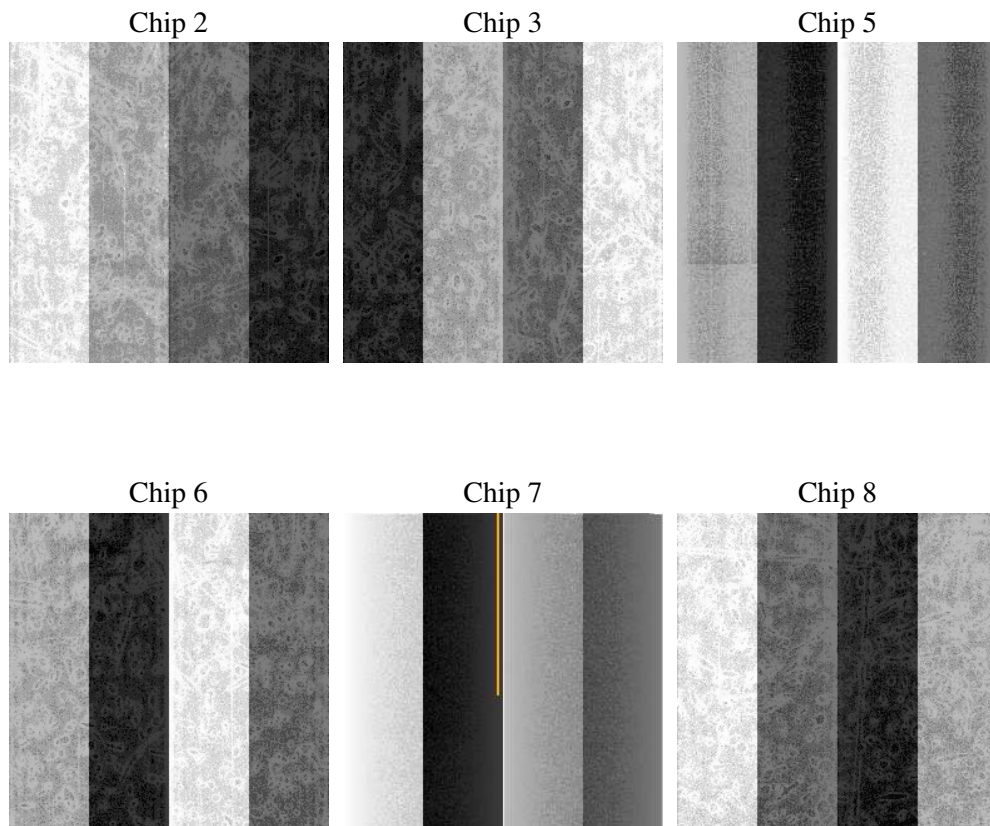
2 OBI

2.1 OBI

2.1.1 Images



2.1.2 Bias



2.1.3 Parameters

obi_num	0
ascdsver	7.6.9
caldbver	3.2.3
date	2006-09-19T19:03:36
revision	2

sched_exp_time	7900.000000
ontime	7658.484773308
ontime2	7655.243673563
ontime3	7658.4846537411
ontime5	7658.484773308
ontime6	7658.484773308
ontime7	7658.484773308
ontime8	7655.2437133789
l1events	408444

2.1.4 Events

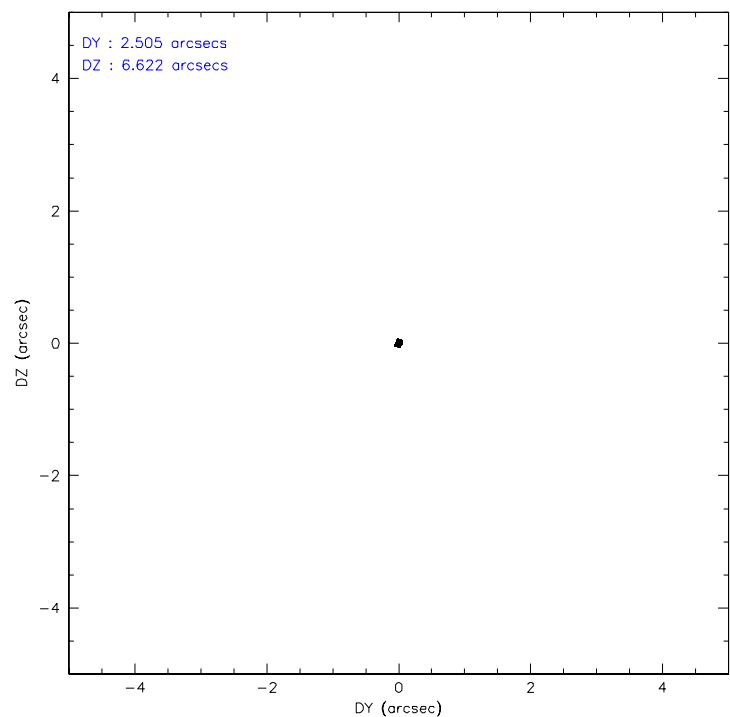
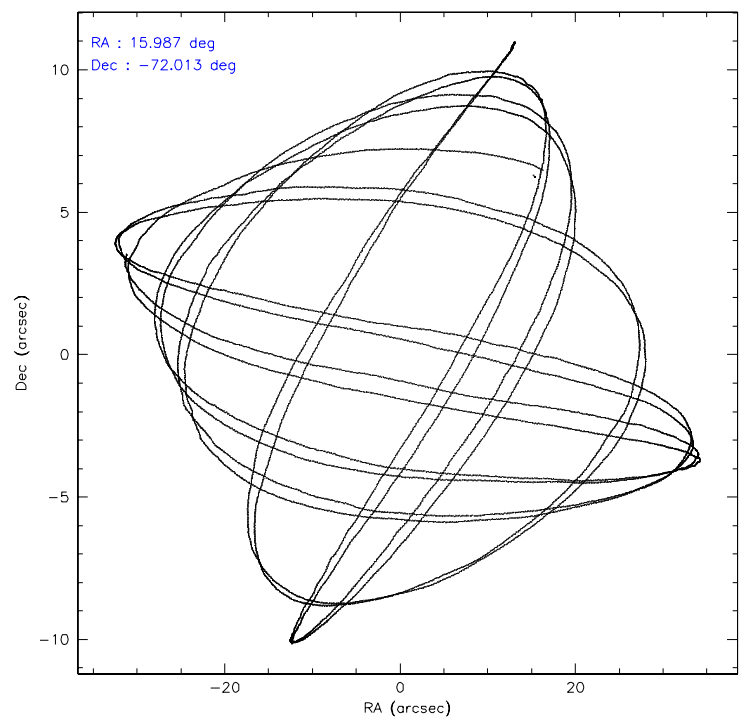
	ccd 2	ccd 3	ccd 5	ccd 6	ccd 7	ccd 8
level 1 events	50975	46325	73122	48948	124246	64828
rejected events	45447	40706	40537	43189	41179	51694
rejected %	89%	87%	55%	88%	33%	79%

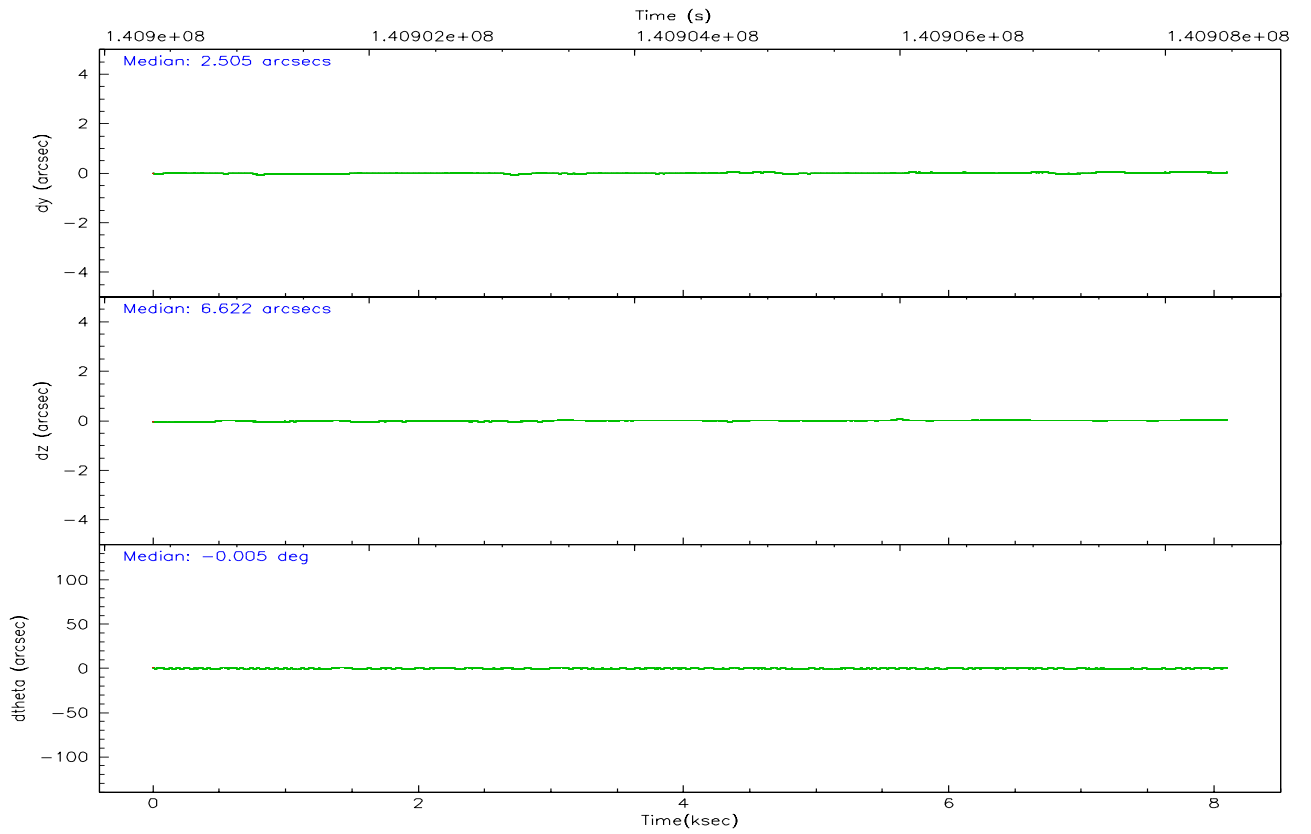
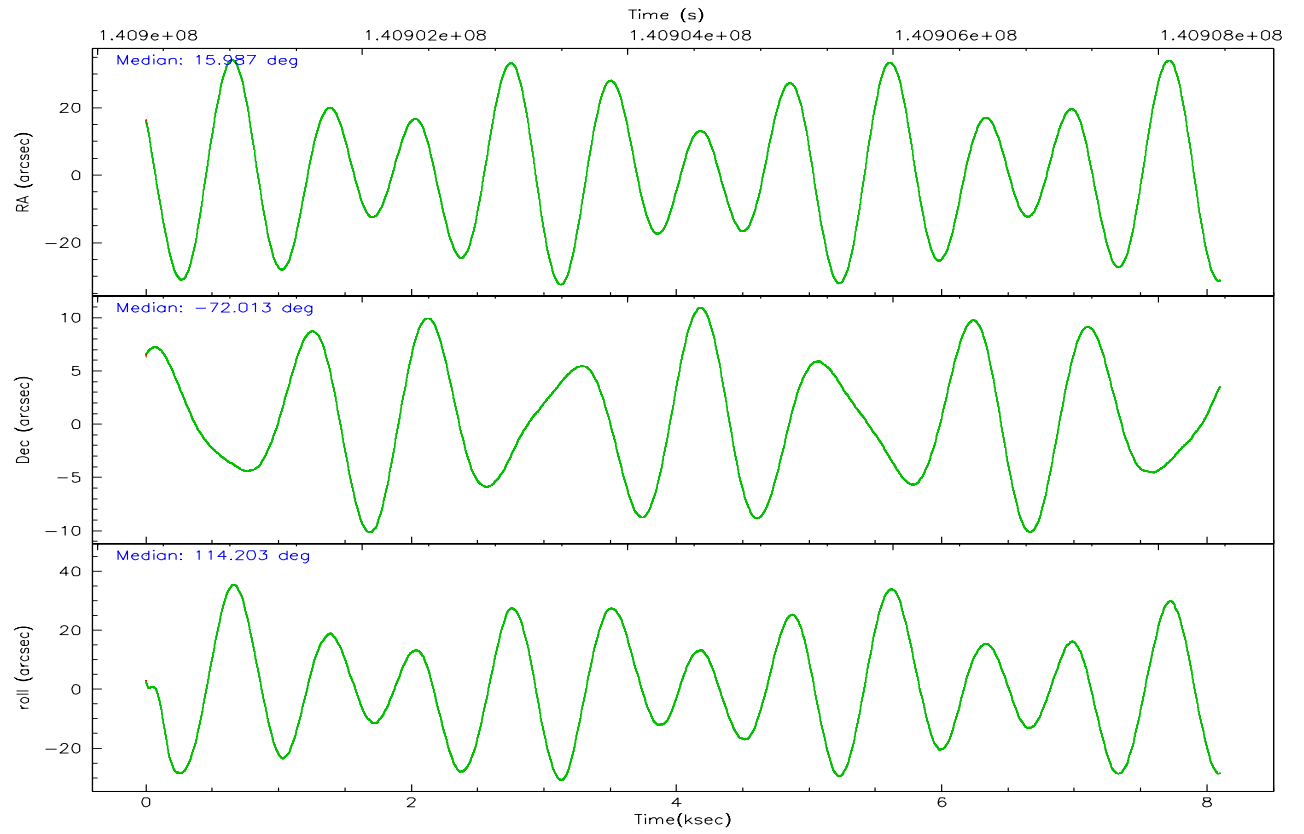
	ccd 2	ccd 3	ccd 5	ccd 6	ccd 7	ccd 8
grade 0 events	2306	2474	3780	2431	22124	4468
	4%	5%	5%	4%	17%	6%
grade 1 events	21	16	112	18	444	56
	0%	0%	0%	0%	0%	0%
grade 2 events	1250	1102	9896	1108	22101	2708
	2%	2%	13%	2%	17%	4%
grade 3 events	482	557	703	568	8321	1369
	0%	1%	0%	1%	6%	2%
grade 4 events	524	550	671	537	7865	1339
	1%	1%	0%	1%	6%	2%
grade 5 events	1780	1903	3591	2209	5225	2799
	3%	4%	4%	4%	4%	4%
grade 6 events	967	942	17569	1117	22728	3250
	1%	2%	24%	2%	18%	5%
grade 7 events	43645	38781	36800	40960	35438	48839
	85%	83%	50%	83%	28%	75%

2.2 Compared Parameters

Parameter	Planned	Actual	Parameter	Planned	Actual
Instrument	ACIS	ACIS	Obspar format version number	6	6
Detector	ACIS-235678	ACIS-235678	Obspar file type	PREDICTED	ACTUAL
Grating	NONE	NONE	Obspar update status	NONE	UPDATED
Data mode	FAINT	FAINT	Number of optional ACIS chips dropped	0	0
Observation mode	POINTING	POINTING	On-chip summing requested	N	N
Pointing RA	16.059877	15.98748223540298	Subarray requested	NONE	NONE
Pointing Dec	-72.028078	-72.01242562761655	Alternating exposures requested	N	N
Pointing Roll	114.124078	114.2118197372224	Primary exposure time	0.000000	3.2
Window start time	139276864.184000	139276864.184000			
Window stop time	141782464.184000	141782464.184000			
SIM focus pos (mm)	-0.684267	-0.6828225247311905			
SIM defocus (mm)	0	0.001444936568705701			
SIM translation stage pos (mm)	-190.132523	-190.1400660498719			
SIM translation stage offset (mm)	0	0.00754346686406393			
Observation start time	140900568.184000	140900192.54428			
Observation start date	2002-06-19T19:01:44	2002-06-19T18:56:32			
Observation end time	140908468.184000	140908676.46962			
Observation end date	2002-06-19T21:13:24	2002-06-19T21:17:56			
Read mode	TIMED	TIMED			

2.3 Aspect



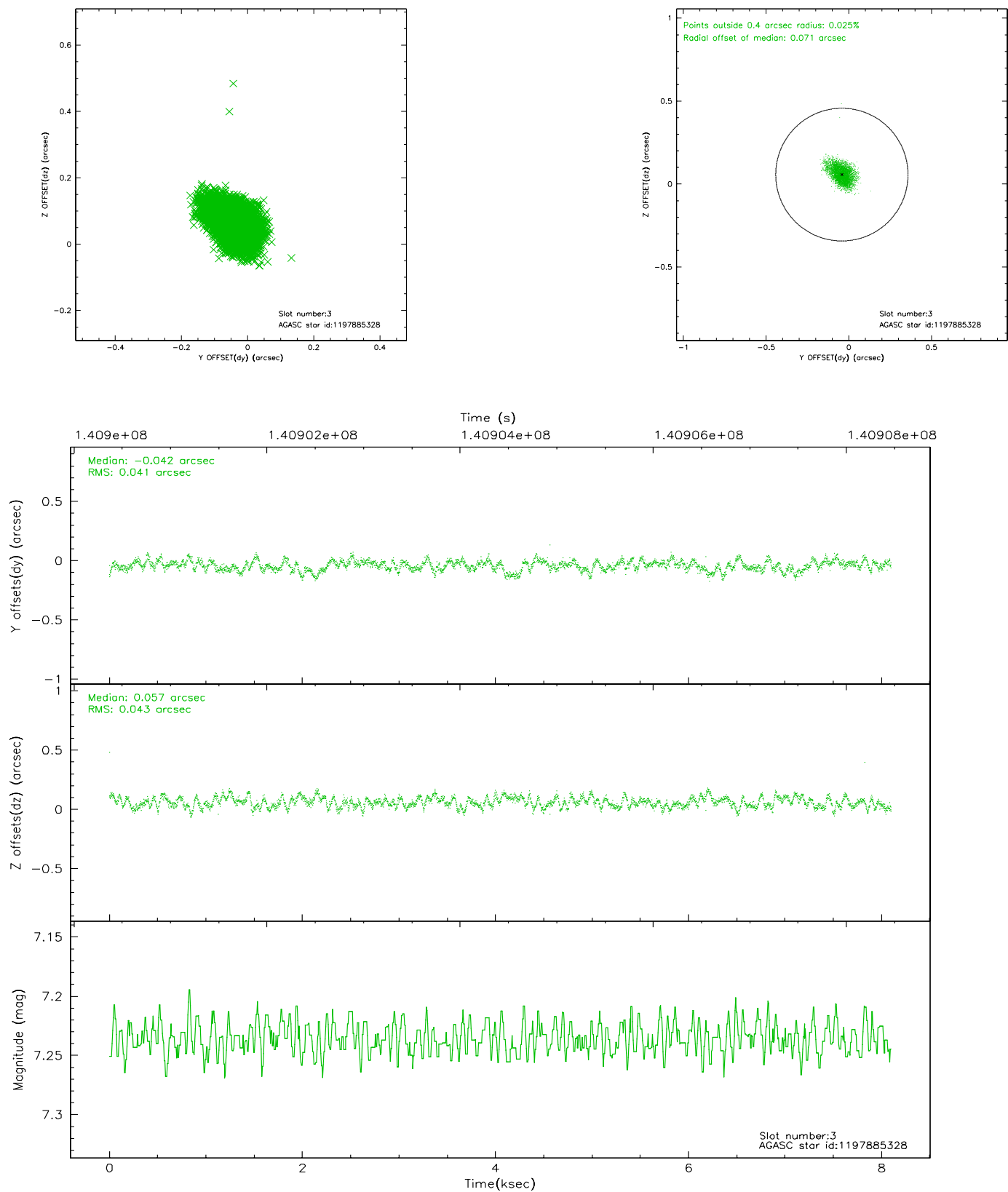


Slot Statistics

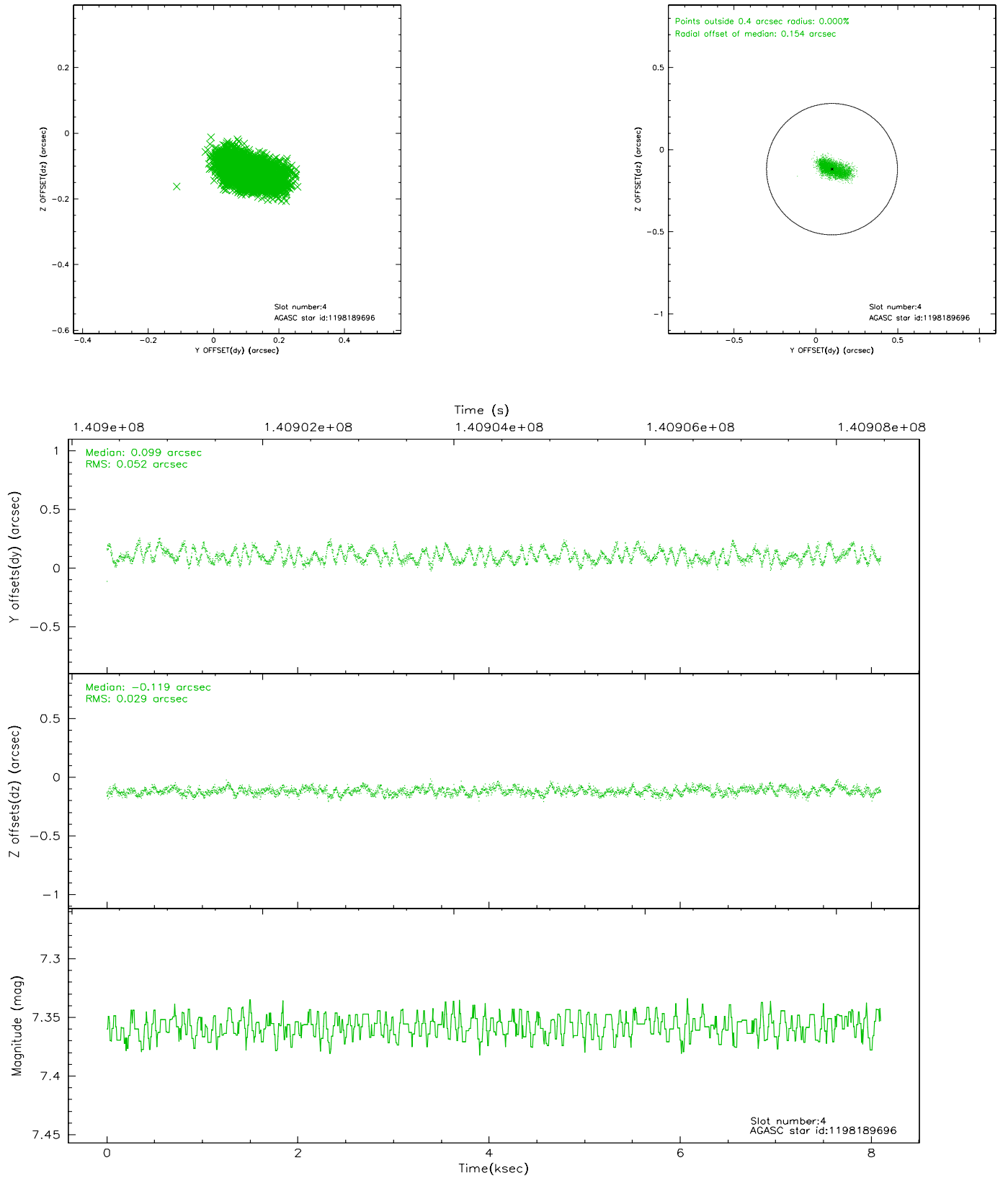
slot	status	id	mag	n_pts	med_dy	med_dz	dr1	dr2	ra	dec	mean_y	mean_z
0	FID	ACIS-S-2	7.11	1975	-0.016	0.038	0.007	0.012	0.000000	0.000000	-755.13	-1727.75
1	FID	ACIS-S-4	7.20	1975	-0.073	-0.002	0.005	0.009	0.000000	0.000000	2157.76	180.01
2	FID	ACIS-S-5	7.23	1975	0.058	-0.027	0.006	0.010	0.000000	0.000000	-1807.03	174.40
3	GUIDE	1197885328	7.24	3951	-0.042	0.057	0.062	0.102	16.283090	-71.733943	863.37	-662.76
4	GUIDE	1198189696	7.36	3951	0.099	-0.119	0.064	0.106	15.223750	-72.697522	-1839.07	1803.83
5	GUIDE	1197884536	8.49	3951	0.001	0.050	0.058	0.094	17.160729	-71.835289	118.21	-1406.26
6	GUIDE	1197878768	9.62	3948	-0.063	0.066	0.103	0.167	16.656786	-71.304581	2093.10	-1692.12
7	GUIDE	1197749416	10.26	3882	0.001	-0.056	0.156	0.249	13.610513	-71.871242	1586.14	2294.78

2.4 Star Slots

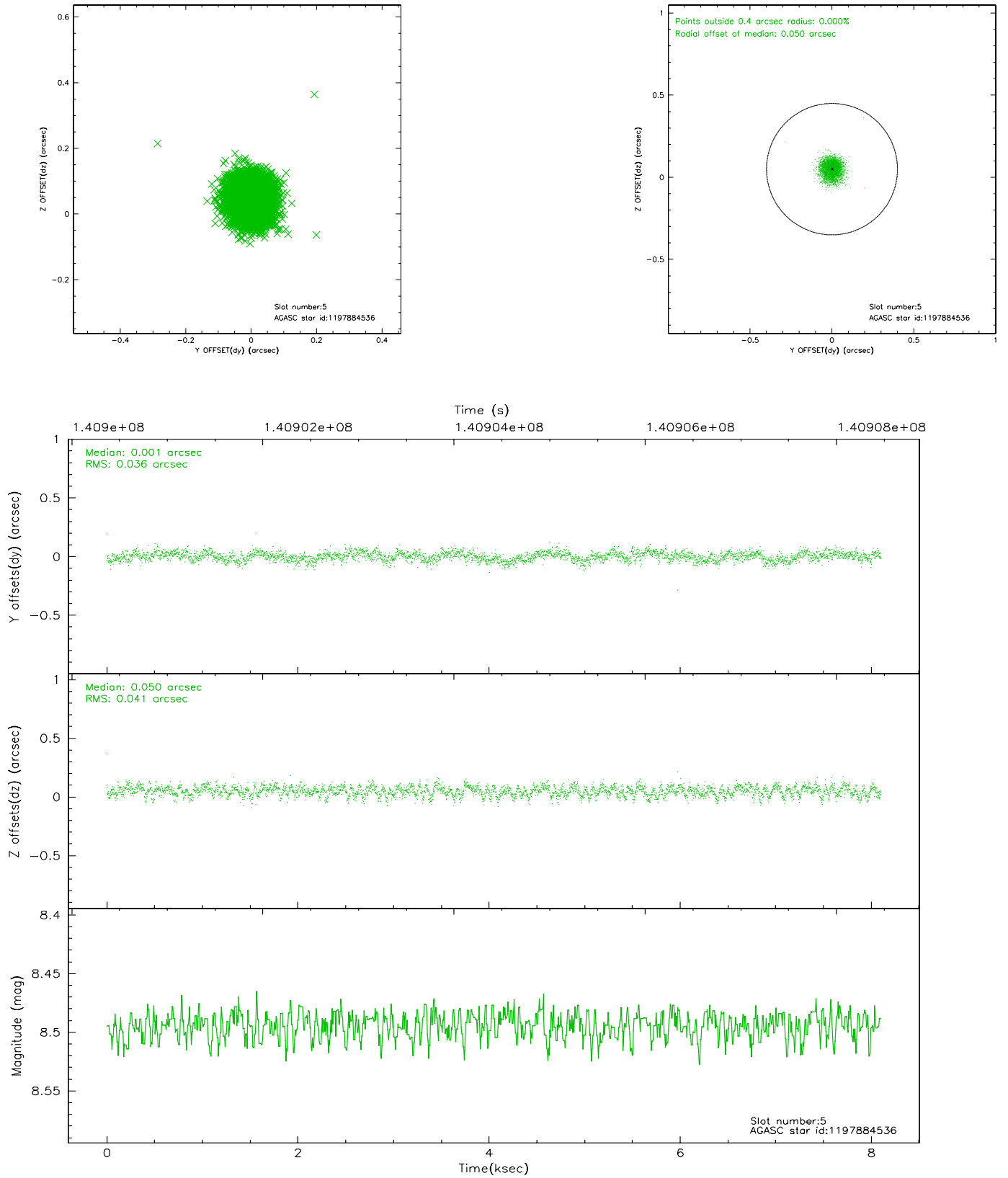
2.4.1 Slot 3



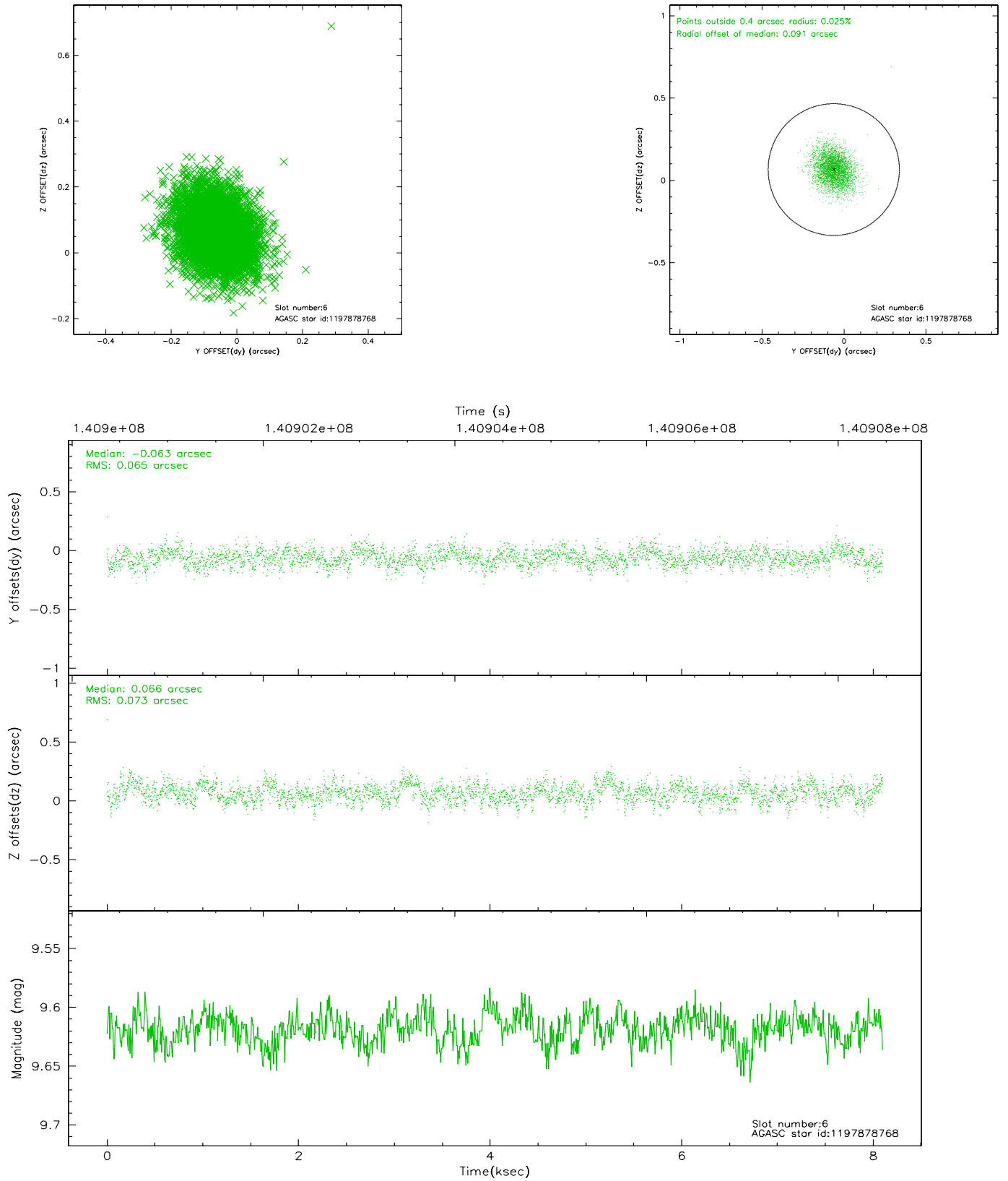
2.4.2 Slot 4



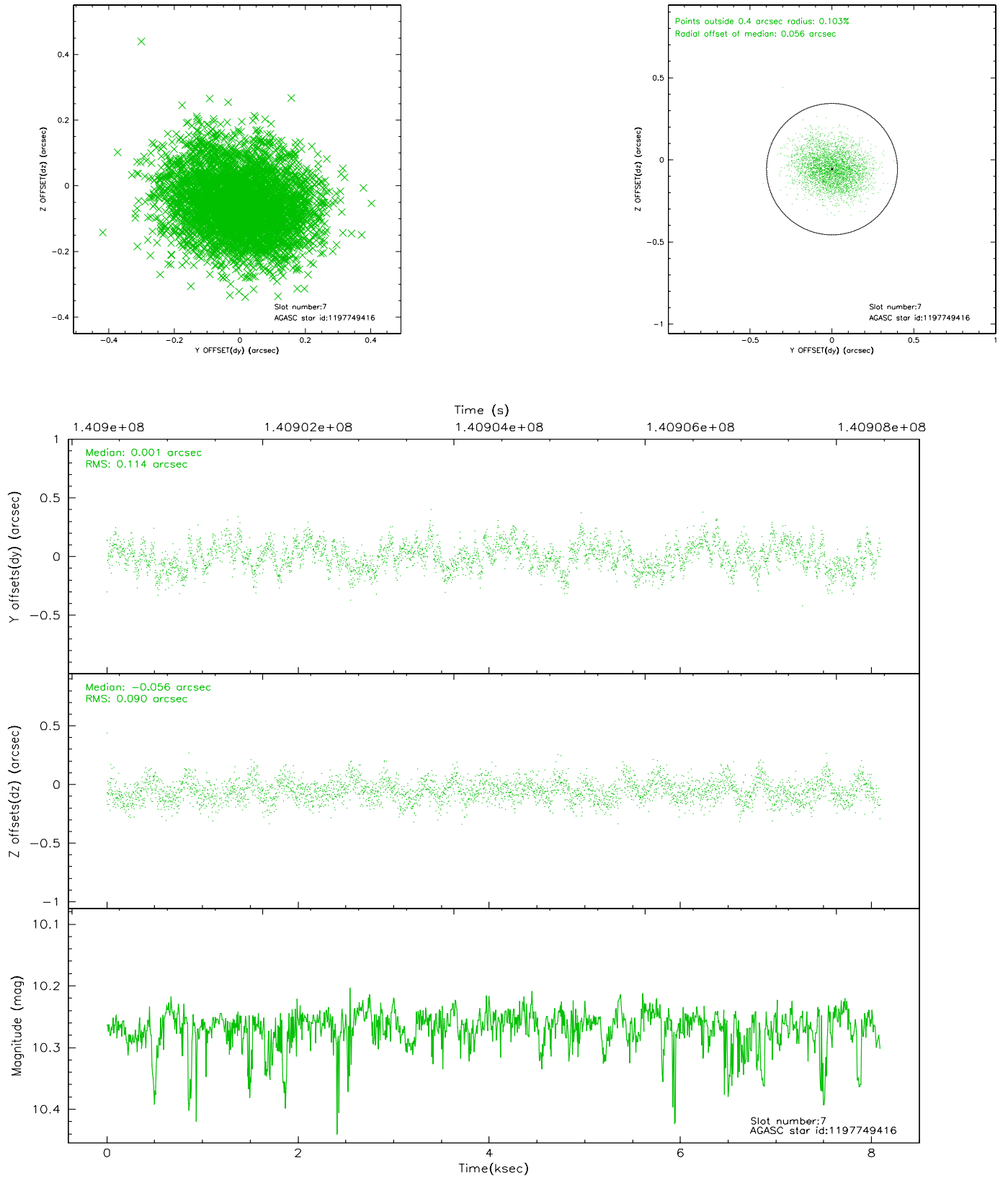
2.4.3 Slot 5



2.4.4 Slot 6

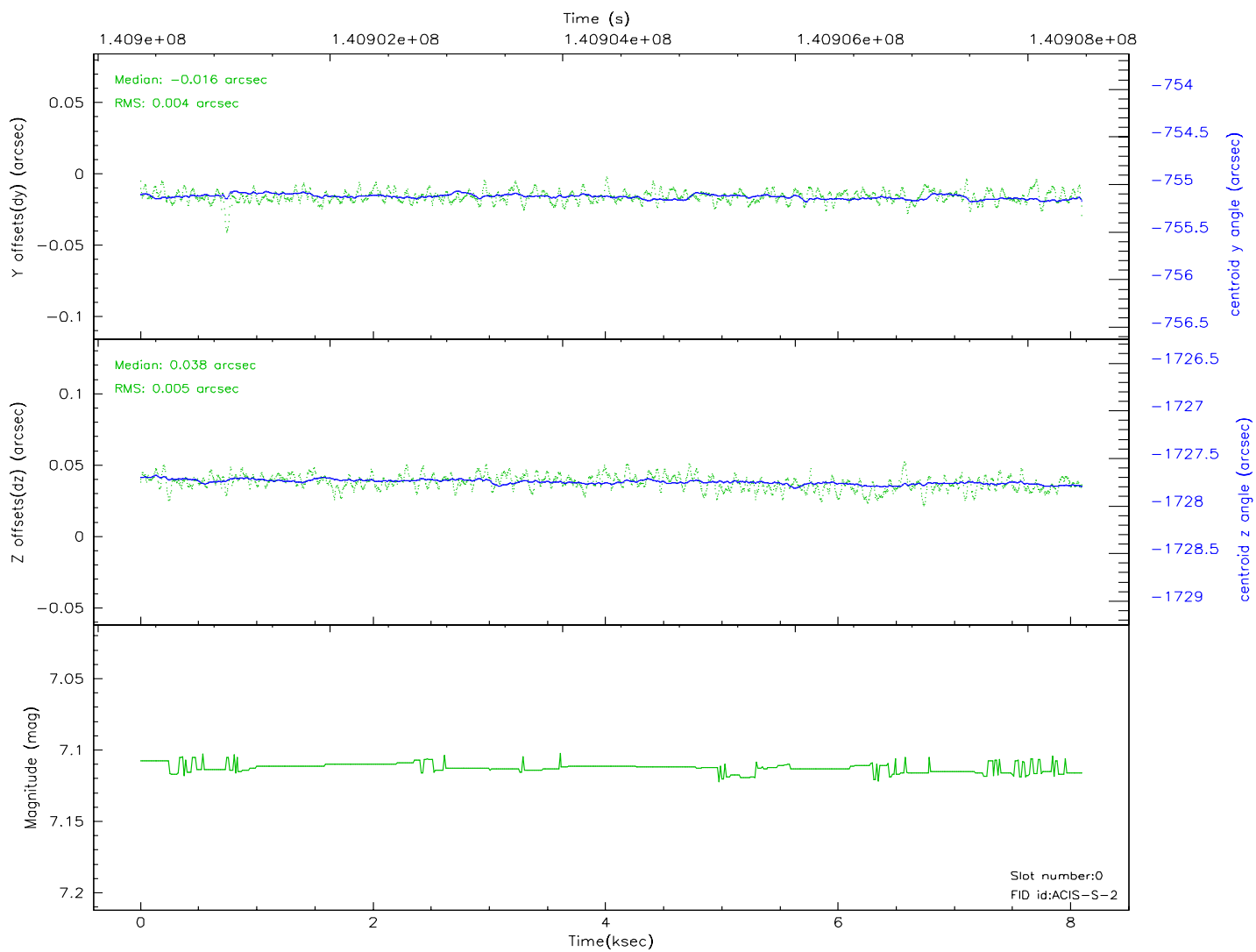
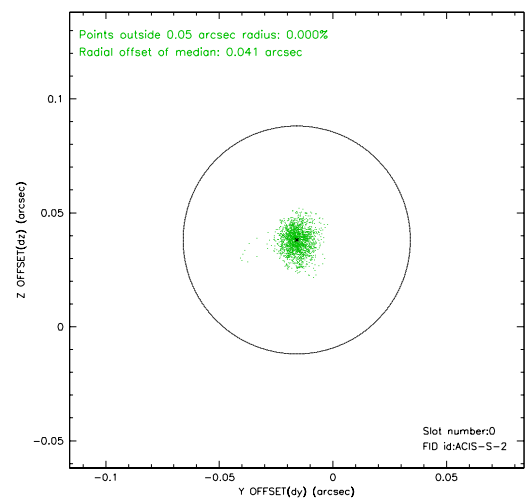
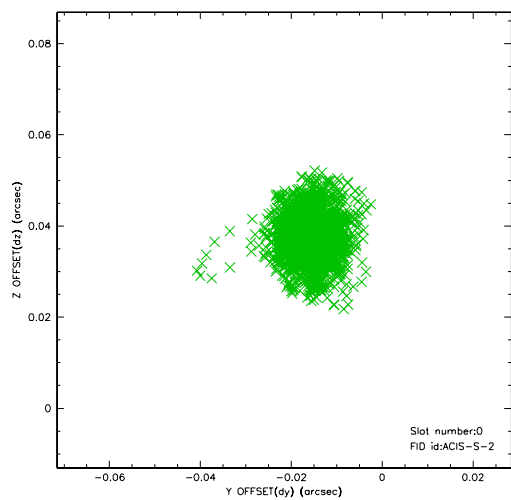


2.4.5 Slot 7

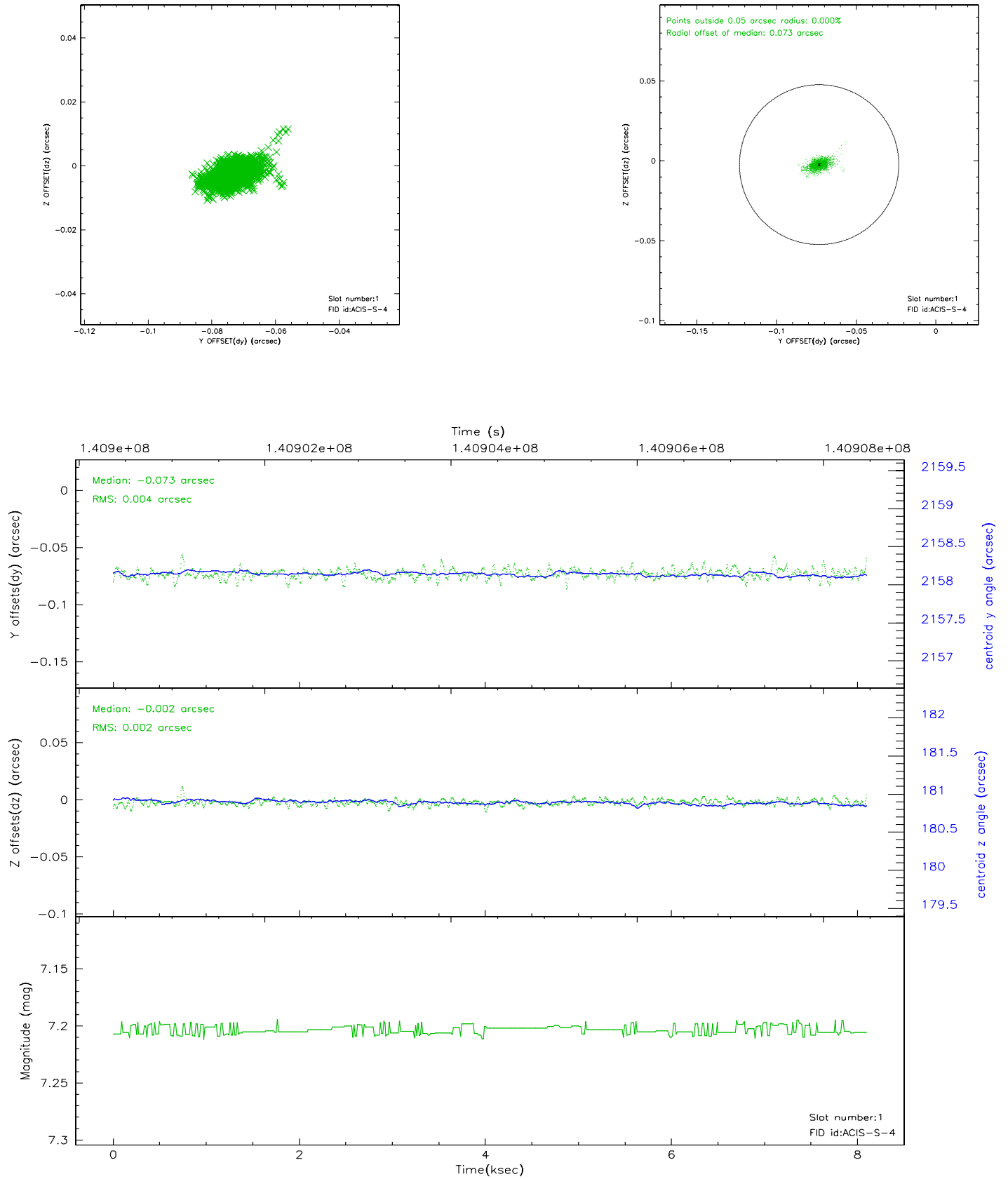


2.5 FID Slots

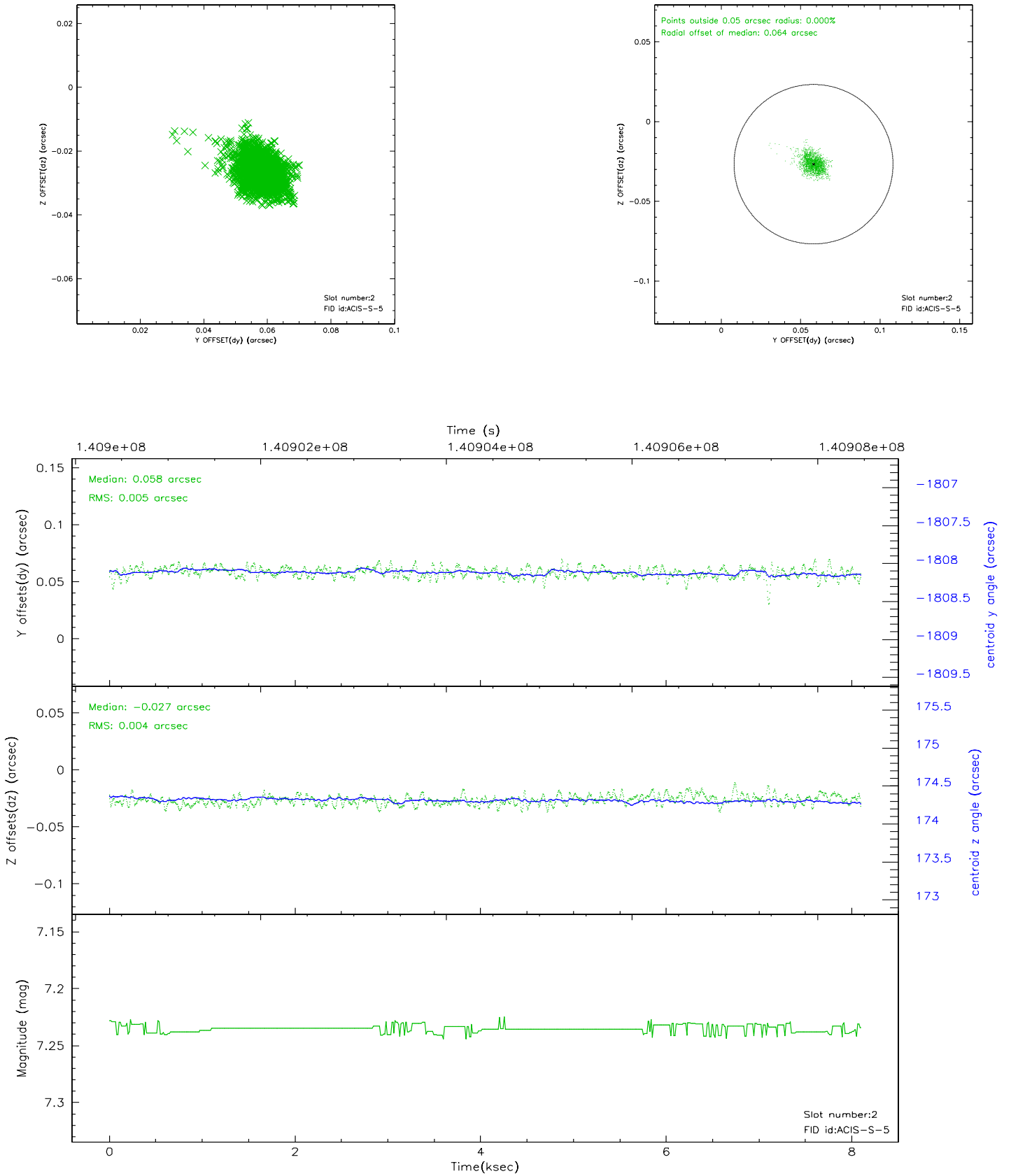
2.5.1 Slot 0



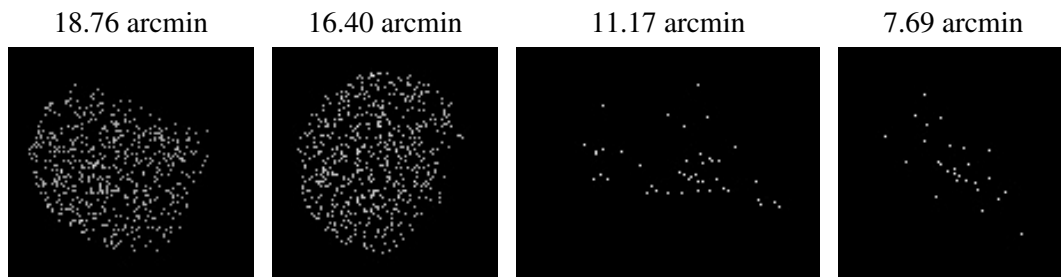
2.5.2 Slot 1



2.5.3 Slot 2



3 Point Sources



A Summary

A.1 Status

V&V Scientist	Jen Lauer
V&V Date (YYYY-MM-DD)	2006.09.20
V&V Edition	1
V&V Disposition and Status	OK
V&V Charge Time	7.657

A.2 Comments

Window constraint met.