

# V&V Reference Report

## L2 ASCDS Version : 7.6.8.1

Observation 2791 - L2 Version 001  
Chandra X-Ray Center

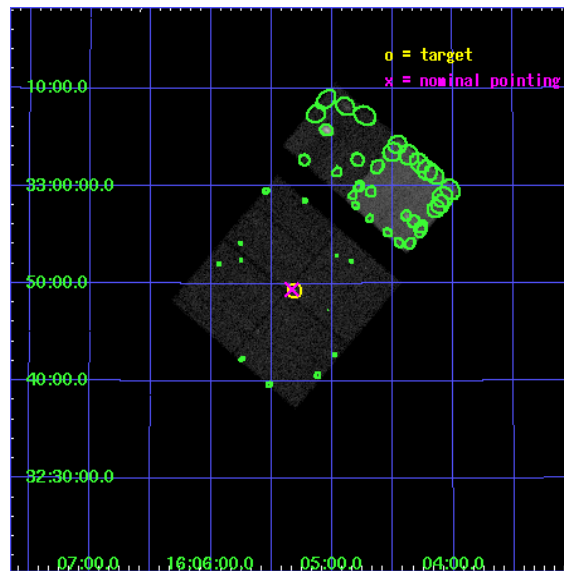
L2 Processing Date : Aug 25 2006

## Contents

<b>1</b>	<b>Front</b>	<b>2</b>
<b>2</b>	<b>OBI</b>	<b>3</b>
2.1	OBI . . . . .	3
2.1.1	Images . . . . .	3
2.1.2	Bias . . . . .	3
2.1.3	Parameters . . . . .	4
2.1.4	Events . . . . .	4
2.2	Compared Parameters . . . . .	5
2.3	Aspect . . . . .	6
2.4	Star Slots . . . . .	9
2.4.1	Slot 3 . . . . .	9
2.4.2	Slot 4 . . . . .	10
2.4.3	Slot 5 . . . . .	11
2.4.4	Slot 6 . . . . .	12
2.4.5	Slot 7 . . . . .	13
2.5	FID Slots . . . . .	14
2.5.1	Slot 0 . . . . .	14
2.5.2	Slot 1 . . . . .	15
2.5.3	Slot 2 . . . . .	16
<b>3</b>	<b>Point Sources</b>	<b>17</b>
<b>A</b>	<b>Summary</b>	<b>18</b>
A.1	Status . . . . .	18
A.2	Comments . . . . .	18

# 1 Front

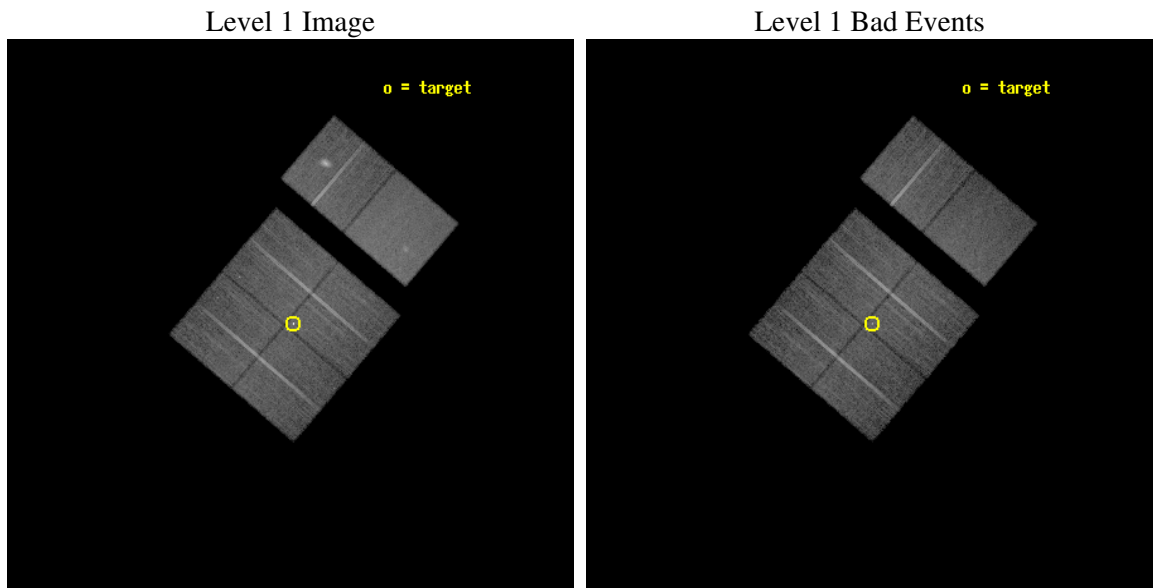
seq_num	500241
obs_id	2791
title	ASTROMETRIC STUDY OF ISOLATED NEUTRON STARS
observer	Dr Christian Motch
object	RX J1605+3249
dtcycle	0
cycle	P
ra_targ	241.327917
dec_targ	32.822139
ra_nom	241.33327310284
dec_nom	32.823544590373
roll_nom	40.560249828686
revision	2
ontime	20655.959039062
livetime	20394.400848184
ontime0	20659.20001924
ontime1	20659.20001924
ontime2	20659.20001924
ontime3	20655.959039062
ontime6	20659.20001924
ontime7	20659.20001924
l2events	138059



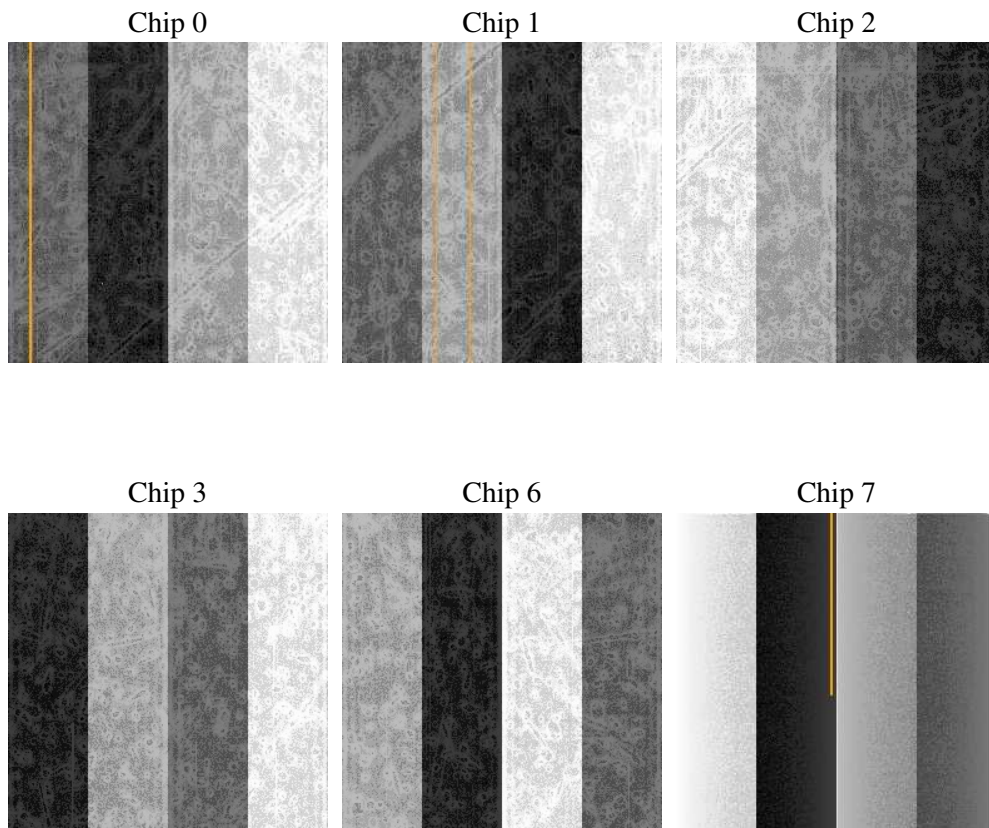
## 2 OBI

### 2.1 OBI

#### 2.1.1 Images



#### 2.1.2 Bias



### 2.1.3 Parameters

obi_num	1
ascdsver	7.6.8.1
caldsver	3.2.3
date	2006-08-25T23:14:51
revision	2

sched_exp_time	20696.385000
ontime	20661.358950749
ontime0	20664.599930927
ontime1	20664.599930927
ontime2	20664.599930927
ontime3	20661.358950749
ontime6	20664.599930927
ontime7	20664.599930927
l1events	802897

### 2.1.4 Events

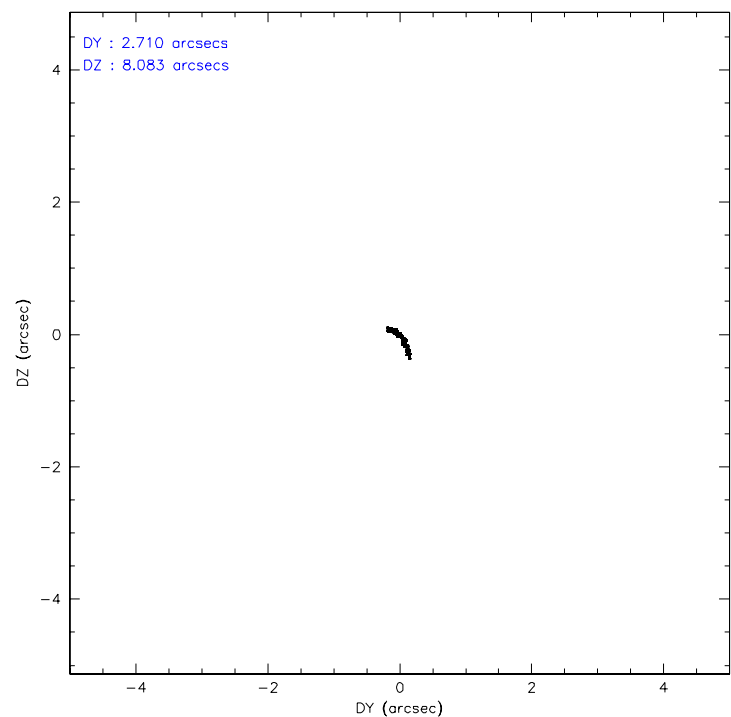
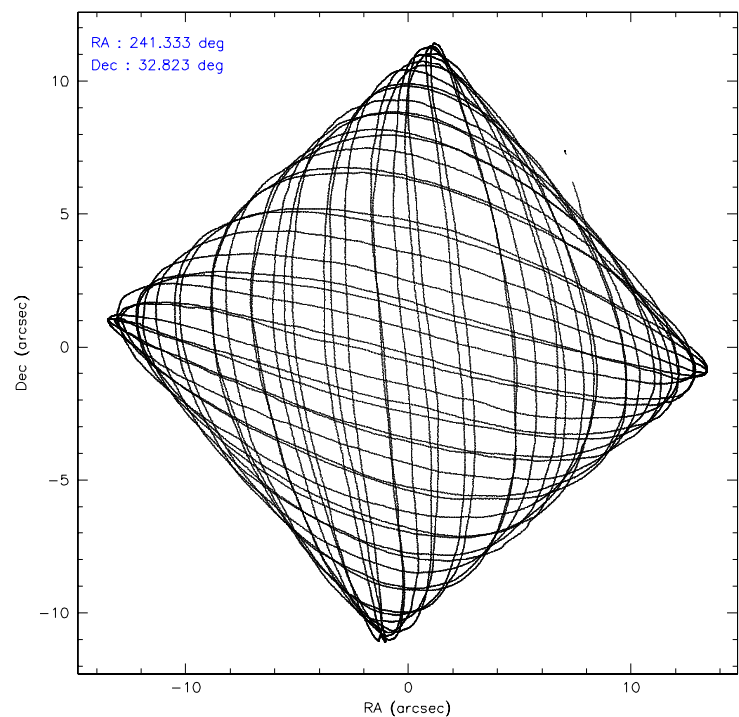
	ccd 0	ccd 1	ccd 2	ccd 3	ccd 6	ccd 7
level 1 events	118138	116466	130715	132209	139196	166173
rejected events	102426	100289	115343	113795	117920	102000
rejected %	86%	86%	88%	86%	84%	61%

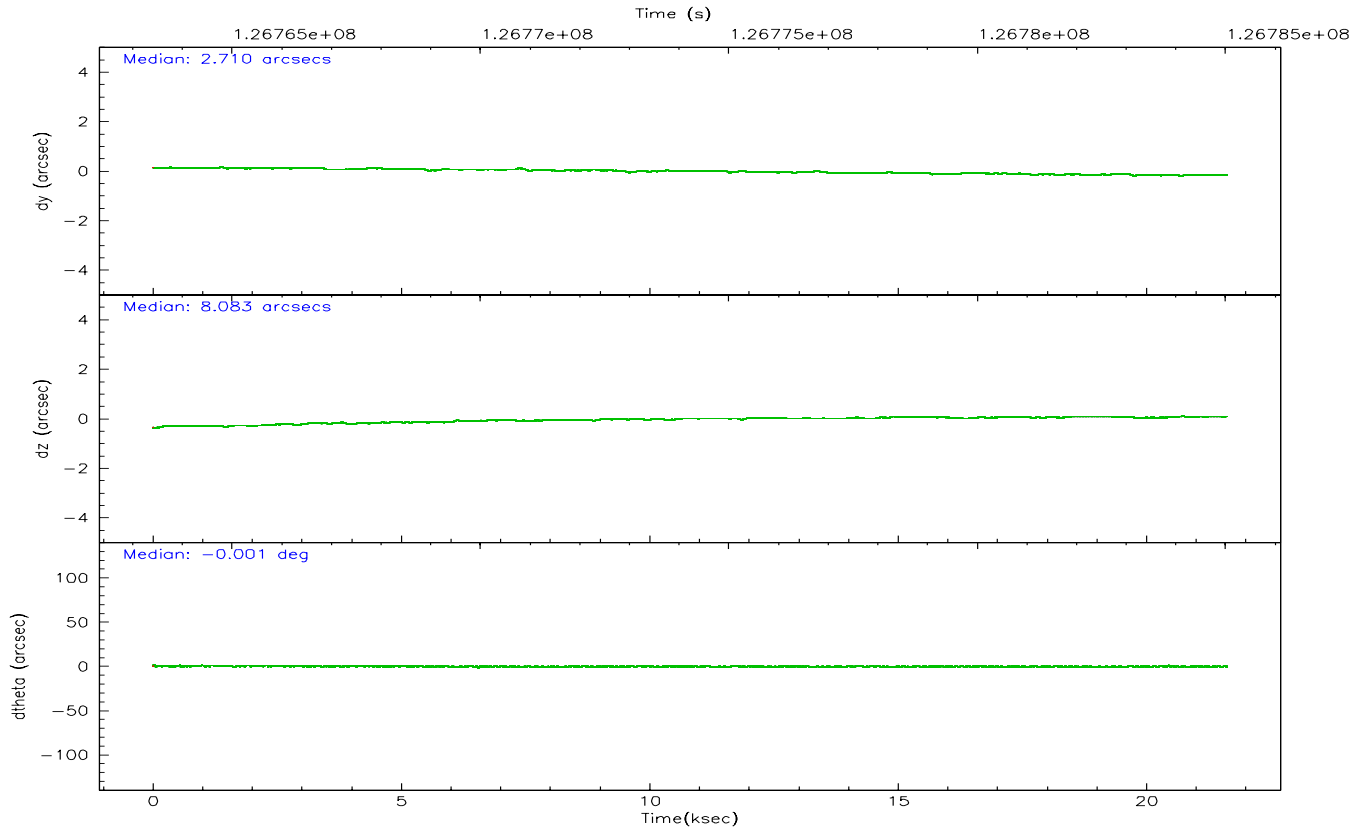
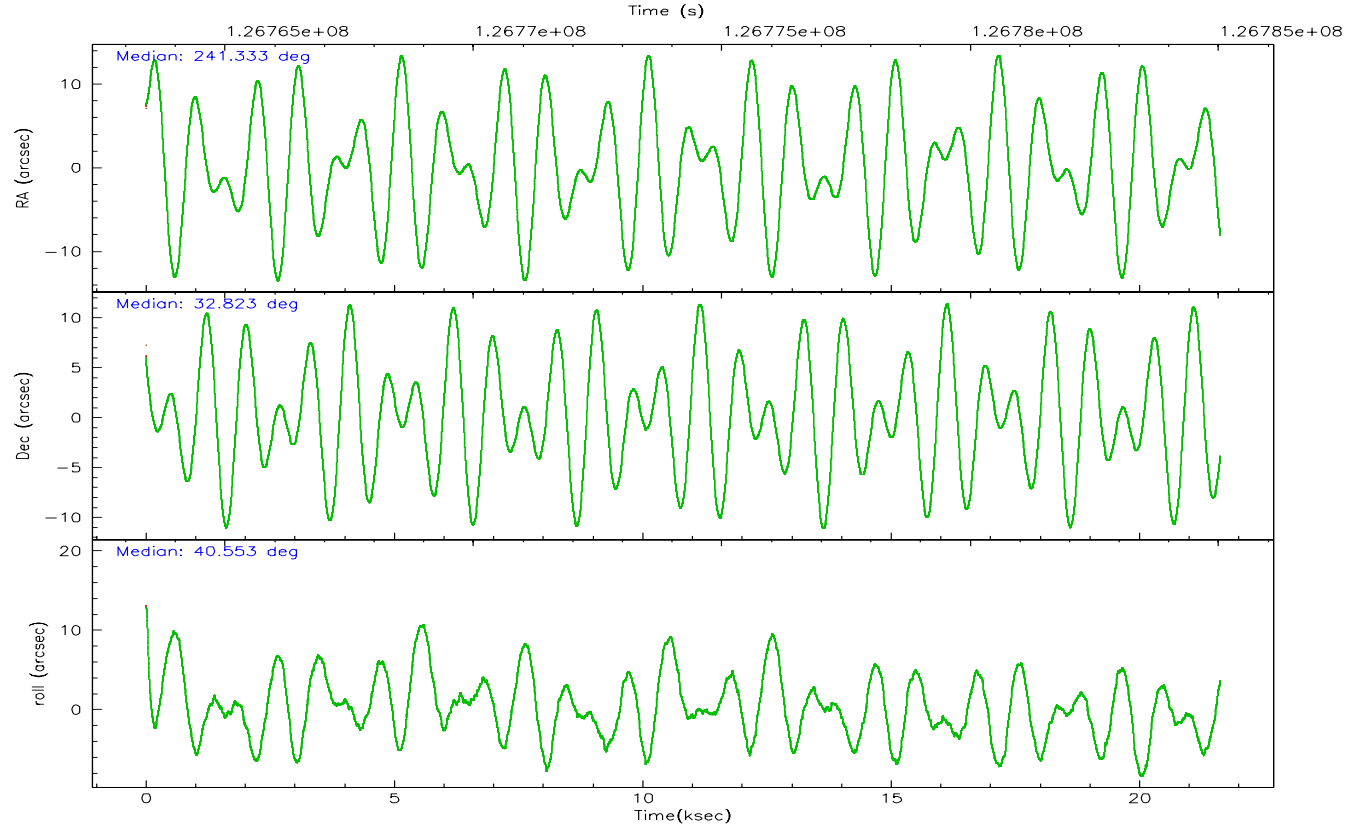
	ccd 0	ccd 1	ccd 2	ccd 3	ccd 6	ccd 7
grade 0 events	6542	6467	6649	9061	10903	4348
	5%	5%	5%	6%	7%	2%
grade 1 events	66	76	75	272	71	99
	0%	0%	0%	0%	0%	0%
grade 2 events	3571	3466	3405	3576	3926	15876
	3%	2%	2%	2%	2%	9%
grade 3 events	1486	1561	1273	1514	1613	3505
	1%	1%	0%	1%	1%	2%
grade 4 events	1357	1642	1358	1492	1604	3368
	1%	1%	1%	1%	1%	2%
grade 5 events	4599	5094	4487	5314	5762	11174
	3%	4%	3%	4%	4%	6%
grade 6 events	2763	3048	2696	2778	3238	37099
	2%	2%	2%	2%	2%	22%
grade 7 events	97754	95112	110772	108202	112079	90704
	82%	81%	84%	81%	80%	54%

## 2.2 Compared Parameters

Parameter	Planned	Actual	Parameter	Planned	Actual
Instrument	ACIS	ACIS	Obspar format version number	6	6
Detector	ACIS-012367	ACIS-012367	Obspar file type	PREDICTED	ACTUAL
Grating	NONE	NONE	Obspar update status	NONE	UPDATED
Data mode	FAINT	FAINT	On-chip summing requested	N	N
Observation mode	POINTING	POINTING	Subarray requested	NONE	NONE
Pointing RA	241.322462	241.3332731028445	Alternating exposures requested	N	N
Pointing Dec	32.797688	32.82354459037312	Primary exposure time	0.000000	3.2
Pointing Roll	40.357425	40.56024982868612			
SIM focus pos (mm)	-0.782348	-0.7809083437167272			
SIM defocus (mm)	0	0.001439871863259334			
SIM translation stage pos (mm)	-233.592463	-233.5874344608287			
SIM translation stage offset (mm)	0	-0.005018542100998502			
Observation start time	126764334.184000	126763011.69574			
Observation start date	2002-01-07T04:17:50	2002-01-07T03:56:51			
Observation end time	126785031.184000	126785345.42164			
Observation end date	2002-01-07T10:02:47	2002-01-07T10:09:05			
Read mode	TIMED	TIMED			

2.3 Aspect





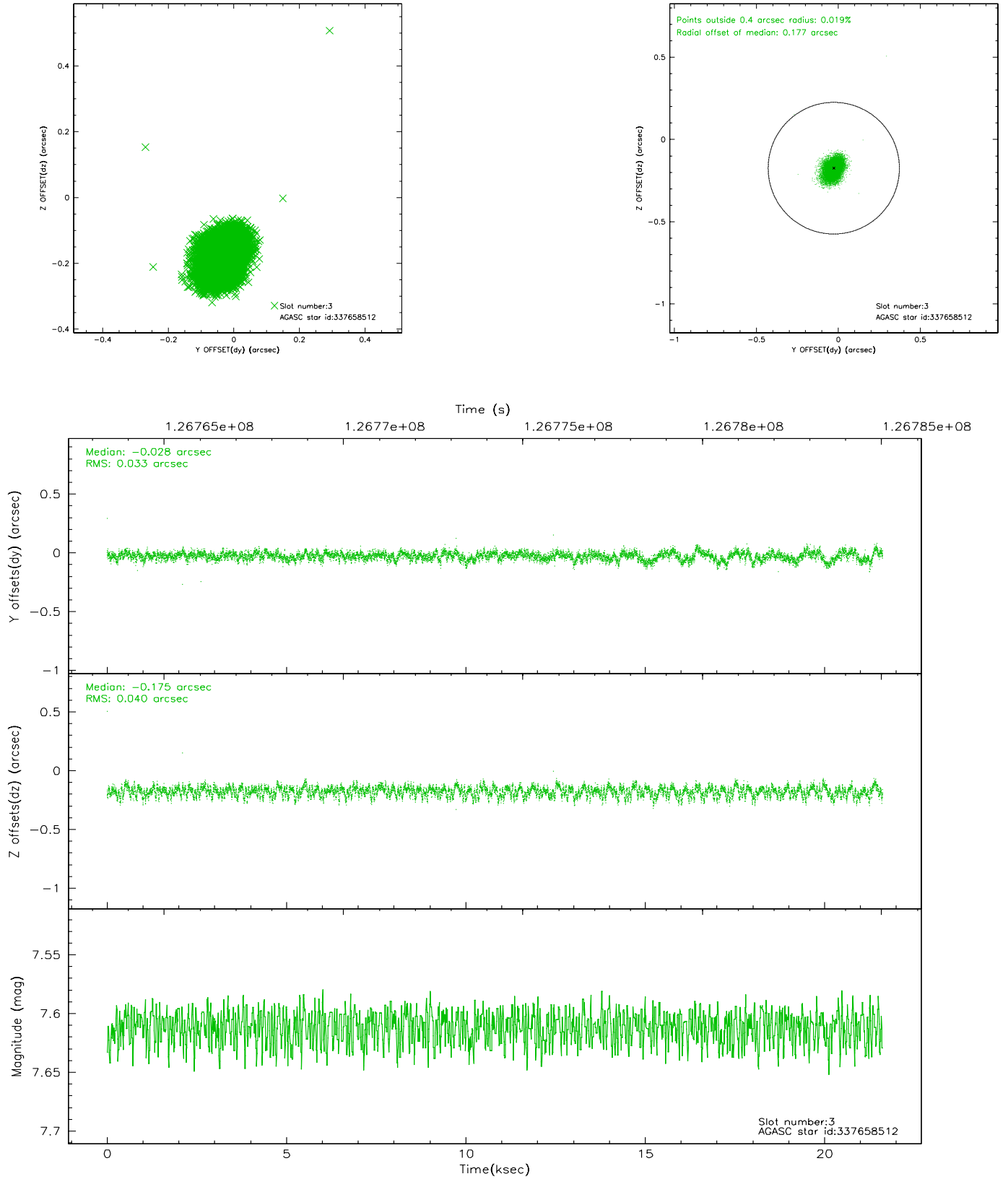
### Slot Statistics

slot	status	id	mag	n_pts	med_dy	med_dz	dr1	dr2	ra	dec	mean_y	mean_z
0	FID	ACIS-I-1	7.24	5274	-0.043	0.086	0.012	0.021	0.000000	0.000000	937.04	-831.38
1	FID	ACIS-I-5	7.24	5273	-0.008	0.031	0.010	0.016	0.000000	0.000000	-1810.91	1066.01
2	FID	ACIS-I-6	7.26	5273	-0.041	-0.046	0.007	0.011	0.000000	0.000000	402.45	1710.59
3	GUIDE	337658512	7.61	10544	-0.028	-0.175	0.054	0.091	241.267822	33.152378	701.29	1079.88
4	GUIDE	337249192	7.60	10544	0.062	-0.035	0.061	0.095	241.081838	32.497244	-1256.43	-350.34
5	GUIDE	337254664	6.91	10546	-0.161	0.166	0.051	0.083	241.786074	32.379583	101.37	-2056.90
6	GUIDE	337651160	9.08	10542	-0.051	0.084	0.084	0.135	242.244617	32.579799	1631.91	-2399.53
7	GUIDE	337258984	9.50	10540	0.178	-0.038	0.111	0.207	241.172034	32.158264	-1839.28	-1457.15

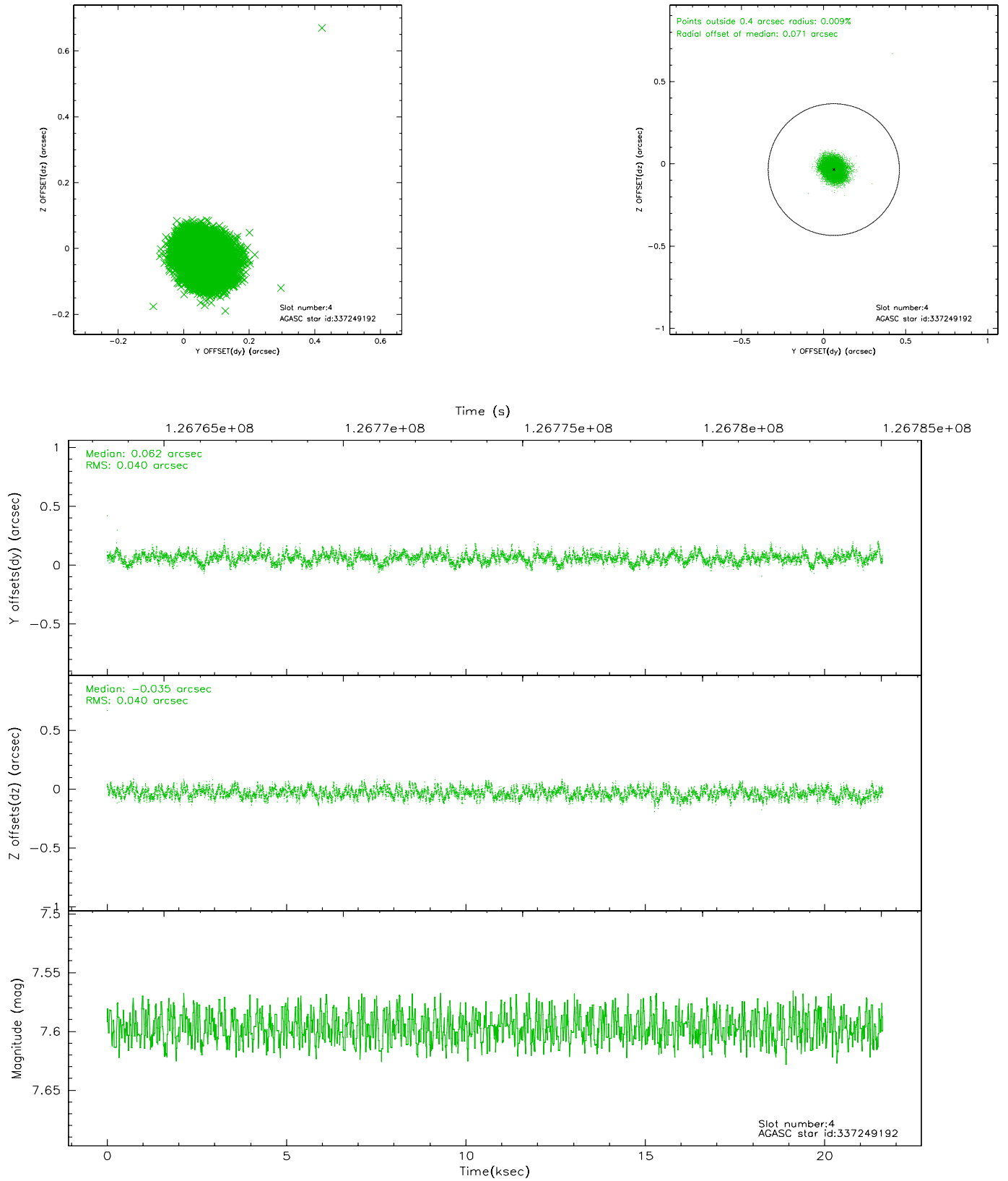


## 2.4 Star Slots

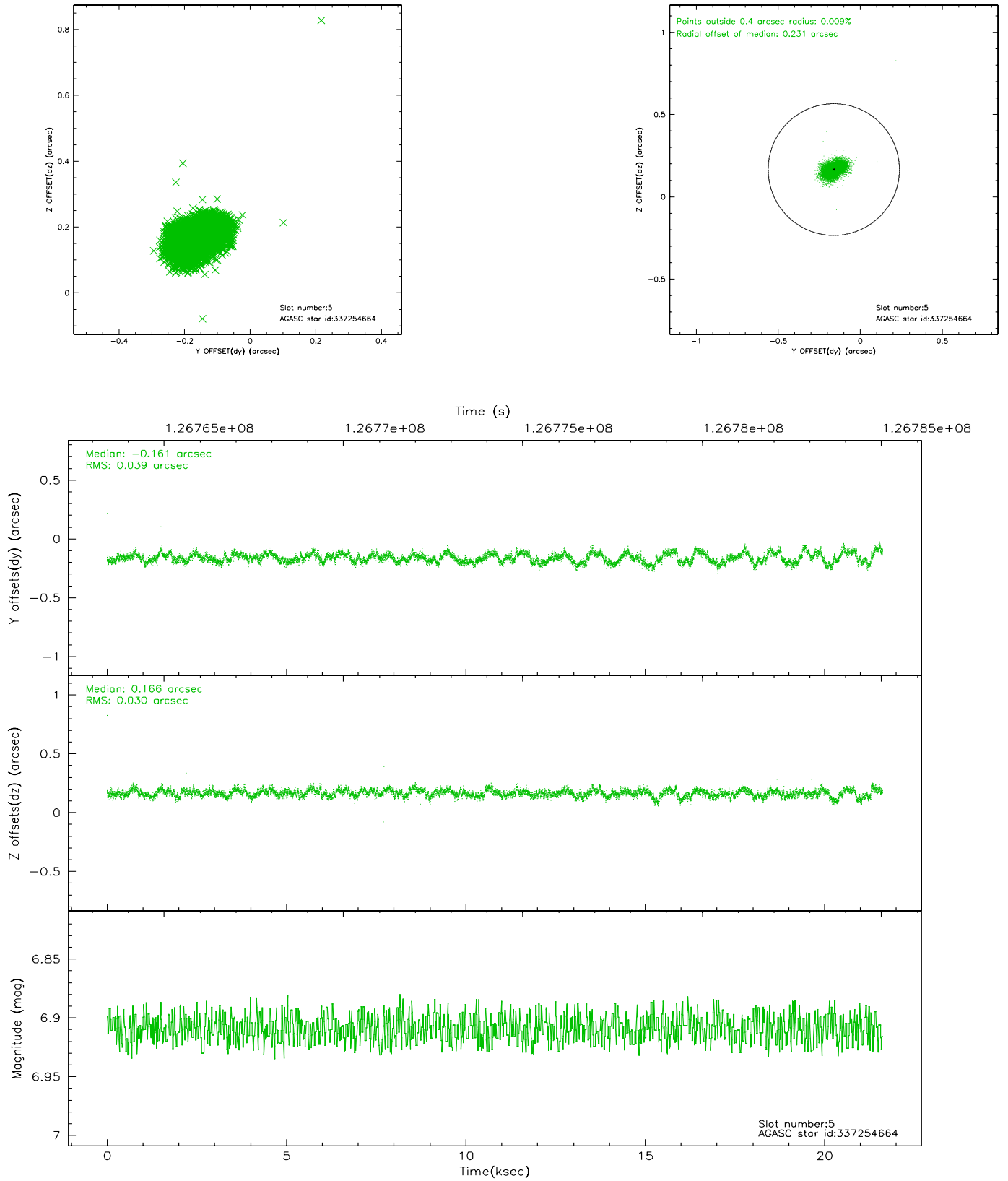
### 2.4.1 Slot 3



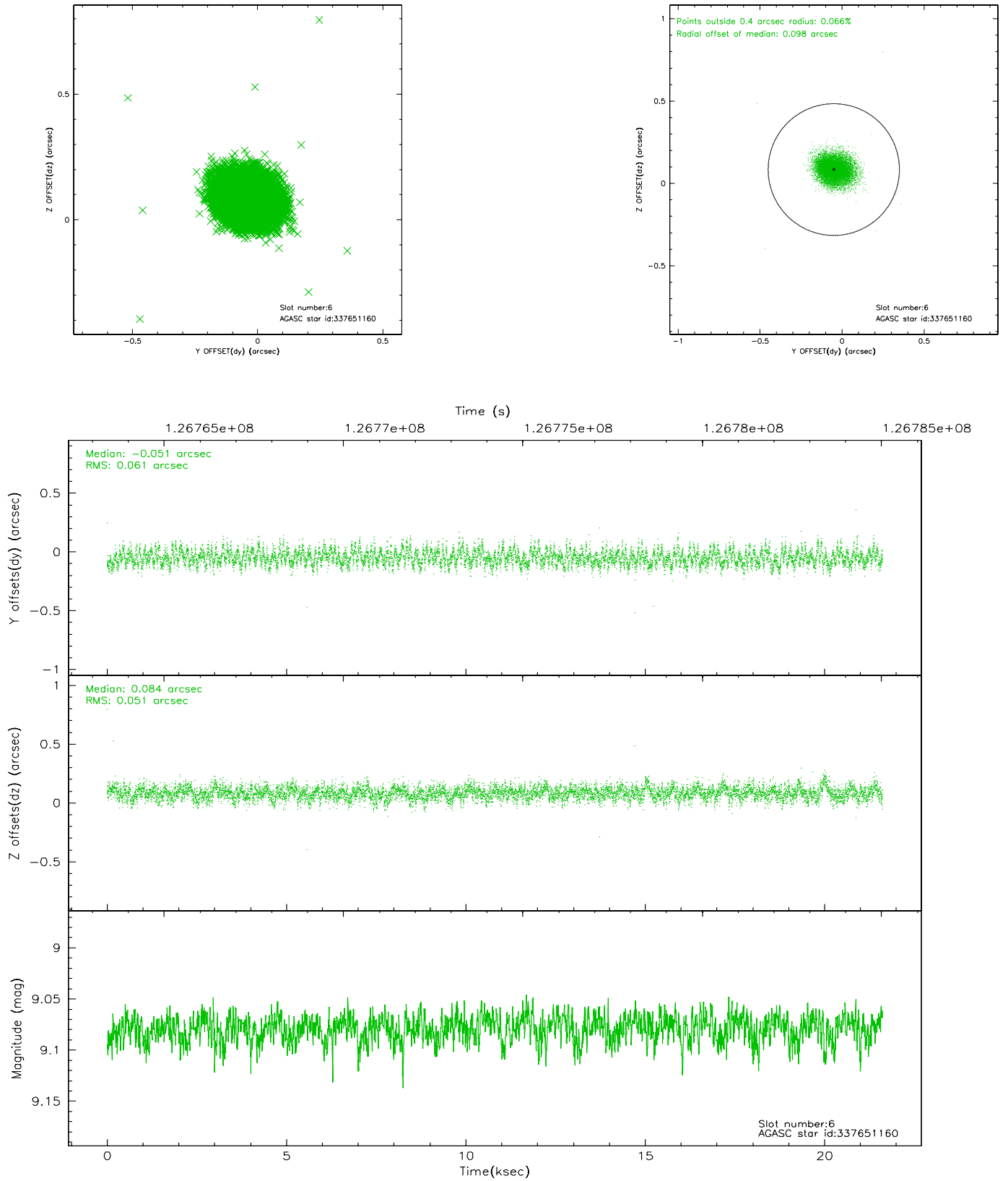
## 2.4.2 Slot 4



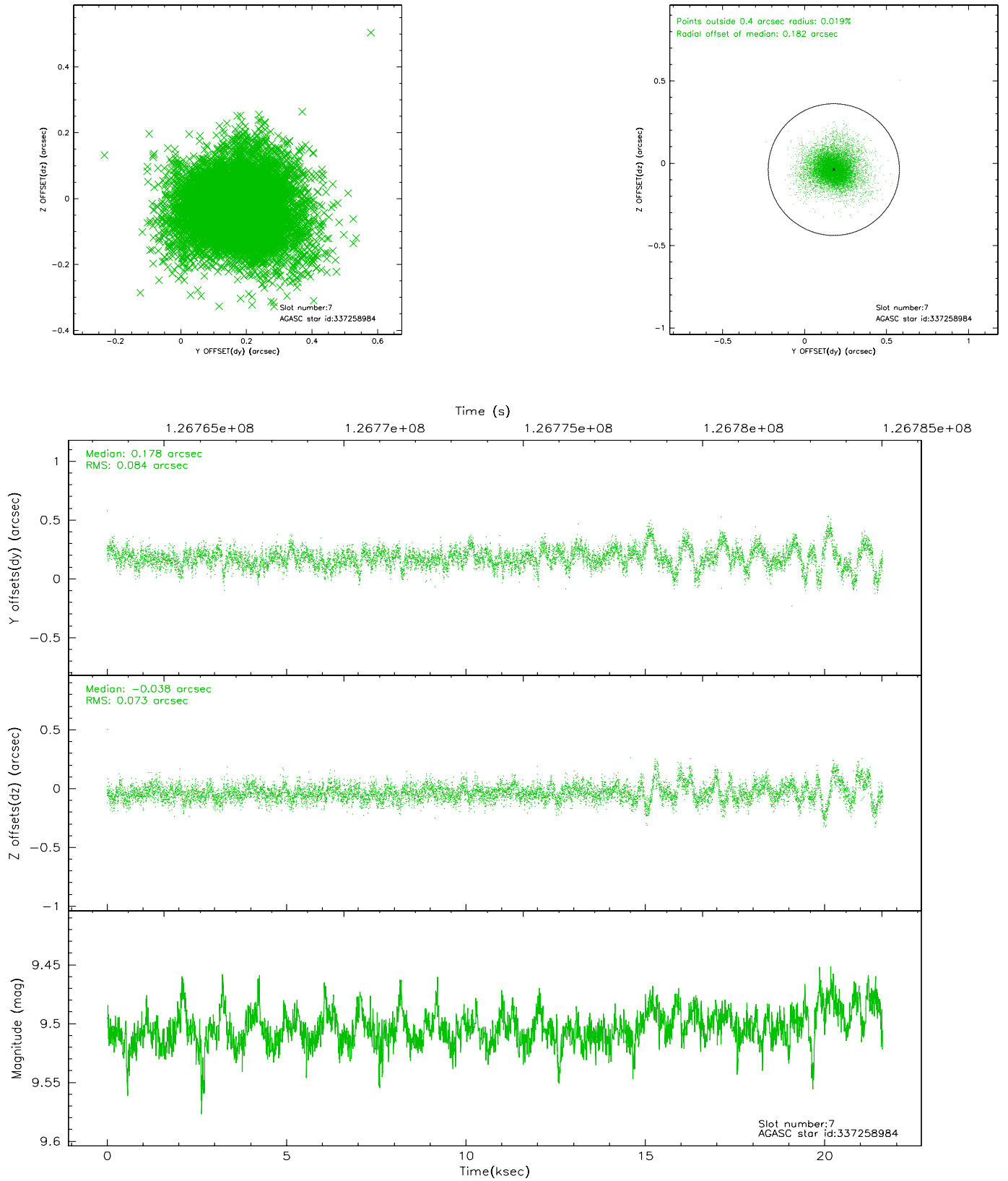
### 2.4.3 Slot 5



## 2.4.4 Slot 6

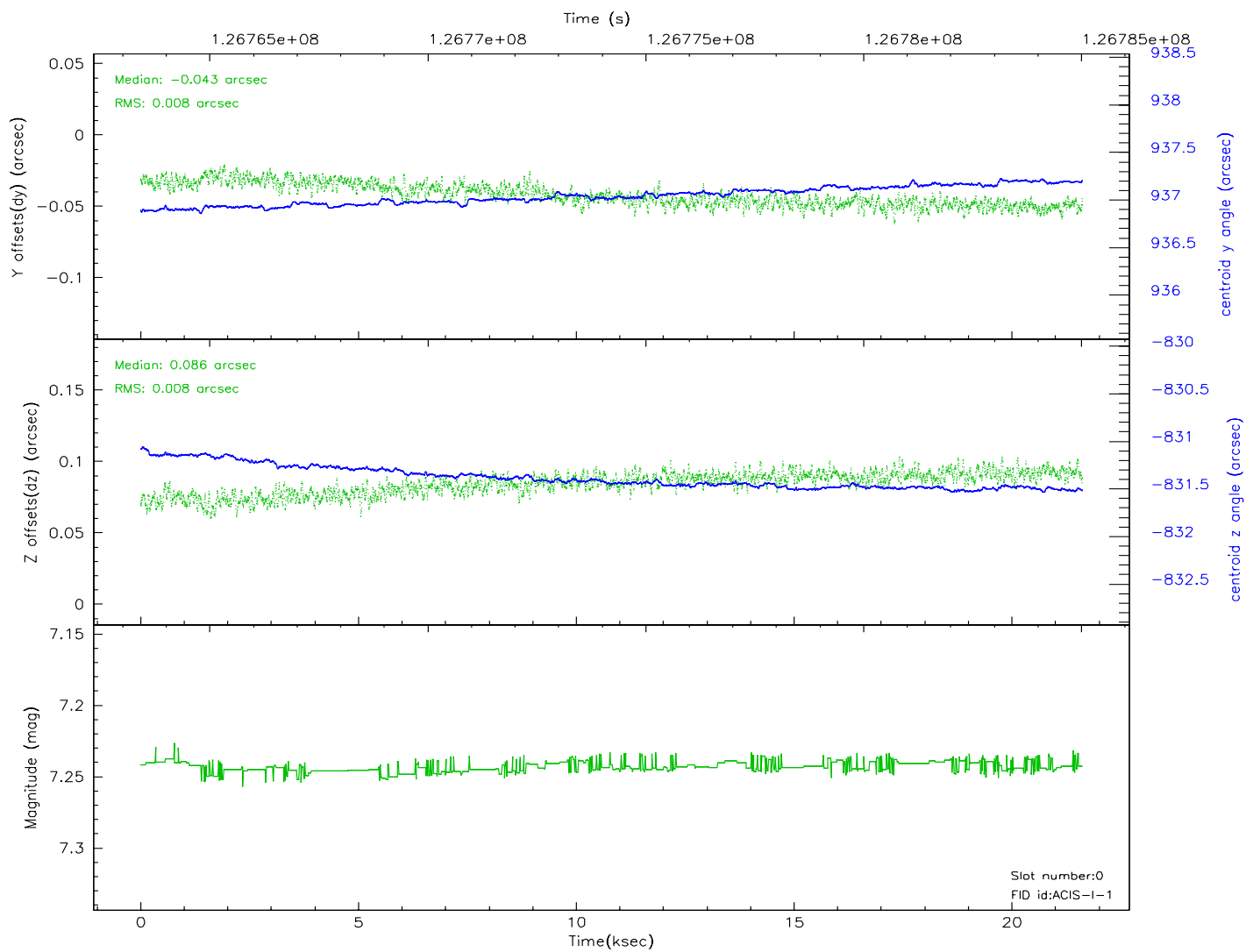
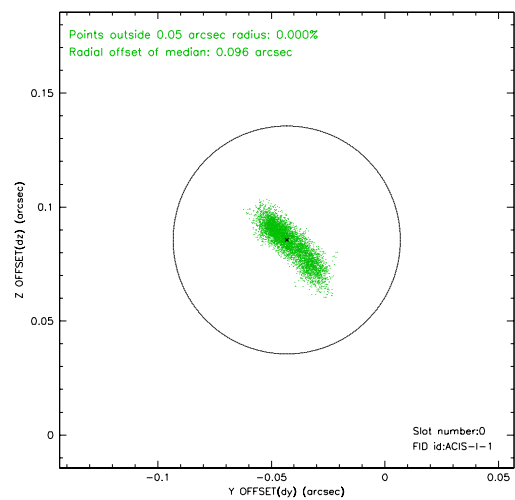
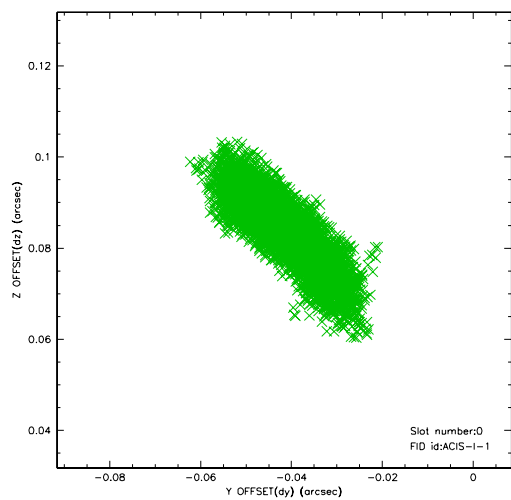


## 2.4.5 Slot 7

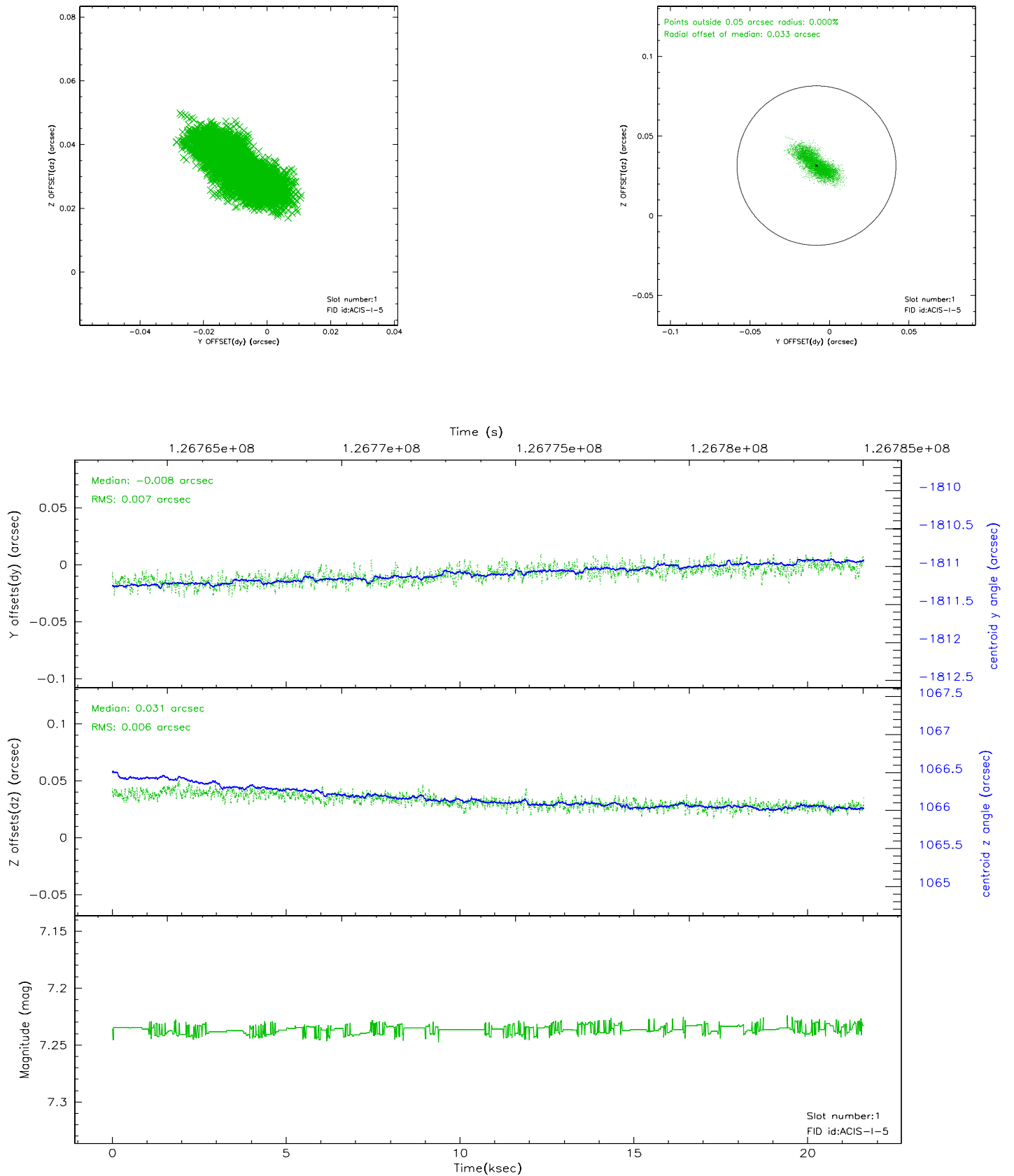


## 2.5 FID Slots

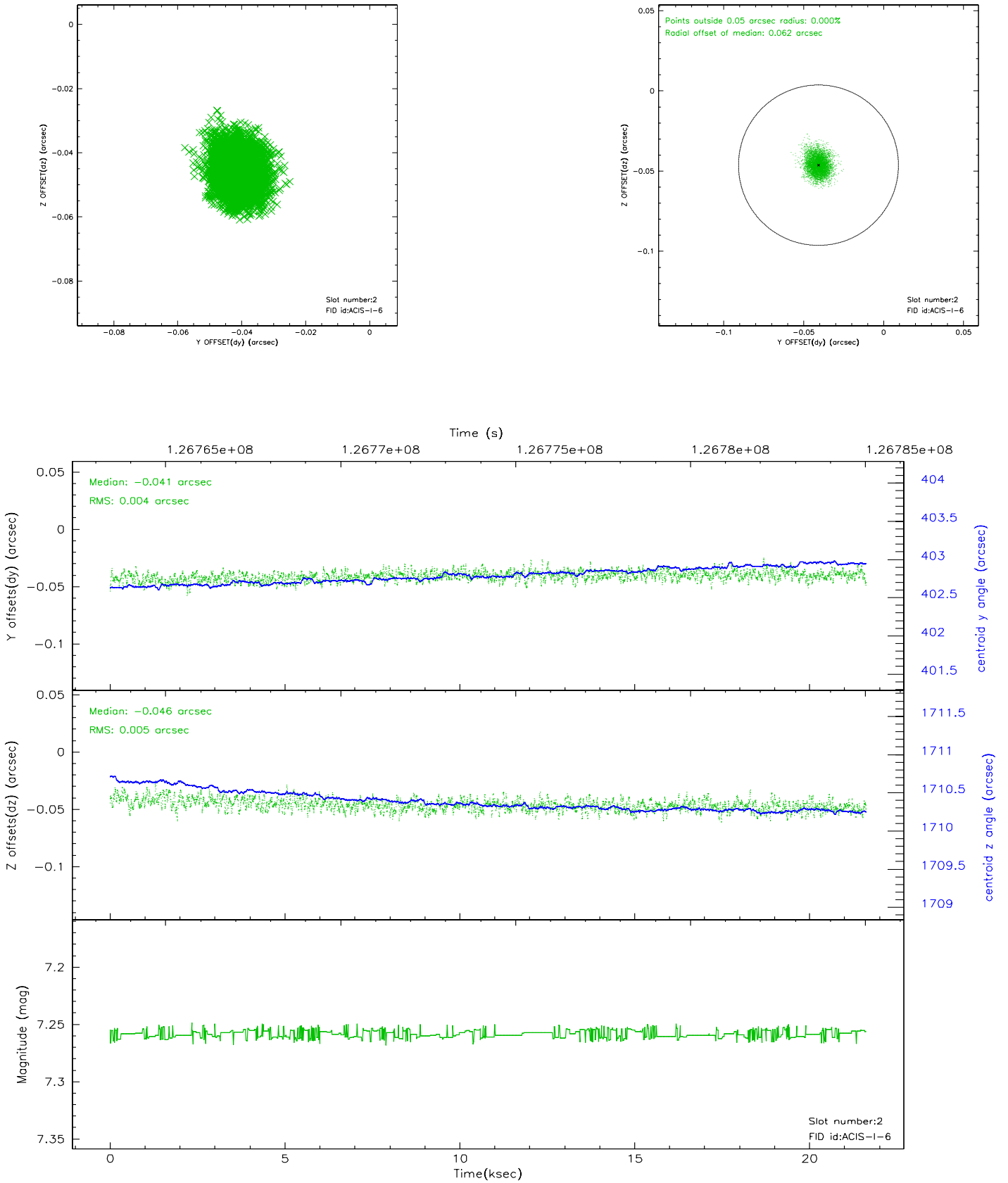
### 2.5.1 Slot 0



## 2.5.2 Slot 1

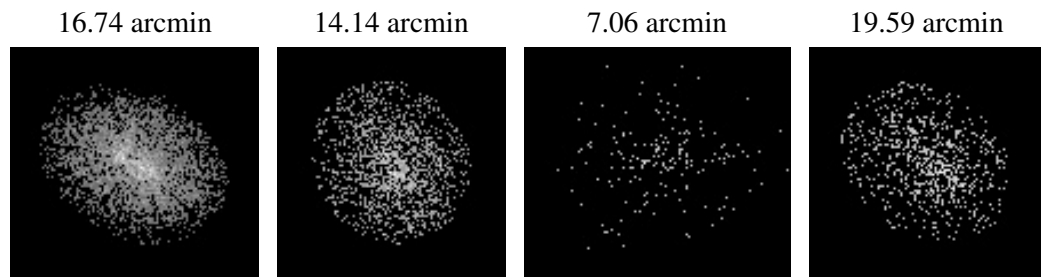


### 2.5.3 Slot 2





### 3 Point Sources



## A Summary

### A.1 Status

V&V Scientist	Jen Lauer
V&V Date (YYYY-MM-DD)	2006.08.28
V&V Edition	1
V&V Disposition and Status	OK
V&V Charge Time	20.659

### A.2 Comments