

# V&V Reference Report

## L2 ASCDS Version : 7.6.8.1

Observation 2731 - L2 Version 001  
Chandra X-Ray Center

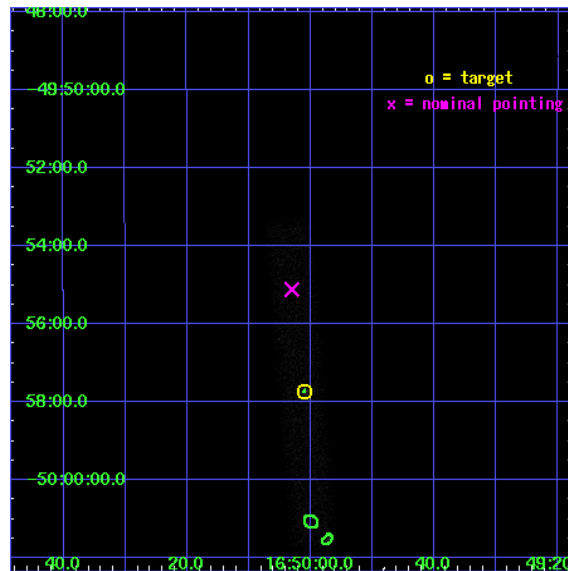
L2 Processing Date : Sep 6 2006

## Contents

<b>1</b>	<b>Front</b>	<b>2</b>
<b>2</b>	<b>OBI</b>	<b>3</b>
2.1	OBI . . . . .	3
2.1.1	Images . . . . .	3
2.1.2	Bias . . . . .	3
2.1.3	Parameters . . . . .	4
2.1.4	Events . . . . .	4
2.2	Compared Parameters . . . . .	5
2.3	Aspect . . . . .	6
2.4	Star Slots . . . . .	9
2.4.1	Slot 3 . . . . .	9
2.4.2	Slot 4 . . . . .	10
2.4.3	Slot 5 . . . . .	11
2.4.4	Slot 6 . . . . .	12
2.4.5	Slot 7 . . . . .	13
2.5	FID Slots . . . . .	14
2.5.1	Slot 0 . . . . .	14
2.5.2	Slot 1 . . . . .	15
2.5.3	Slot 2 . . . . .	16
<b>3</b>	<b>Point Sources</b>	<b>17</b>
<b>A</b>	<b>Summary</b>	<b>18</b>
A.1	Status . . . . .	18
A.2	Comments . . . . .	18

# 1 Front

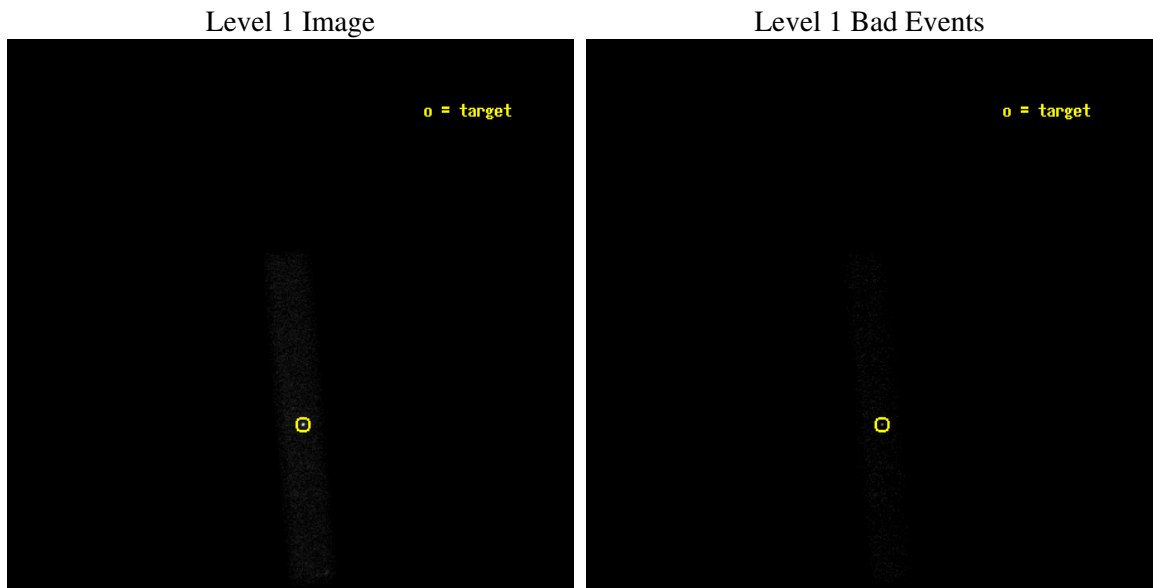
seq_num	400211
obs_id	2731
title	BLACK HOLE X-RAY TRANSIENTS DURING OUTBURST DECAY
observer	Dr. John Tomsick
object	XTE J1650-500
dtcycle	0
cycle	P
ra_targ	252.504167
dec_targ	-49.9625
ra_nom	252.51265339755
dec_nom	-49.918759031491
roll_nom	85.22592525523
revision	2
ontime	20140.400300115
livetime	18266.27997471
ontime7	20140.400300115
l2events	19507



## 2 OBI

### 2.1 OBI

#### 2.1.1 Images



#### 2.1.2 Bias

Chip 7



### 2.1.3 Parameters

obi_num	0
ascdsver	7.6.8.1
caldbver	3.2.3
date	2006-09-06T06:48:36
revision	2

sched_exp_time	20000.000000
ontime	20871.957734048
ontime7	20871.957734048
l1events	34232

### 2.1.4 Events

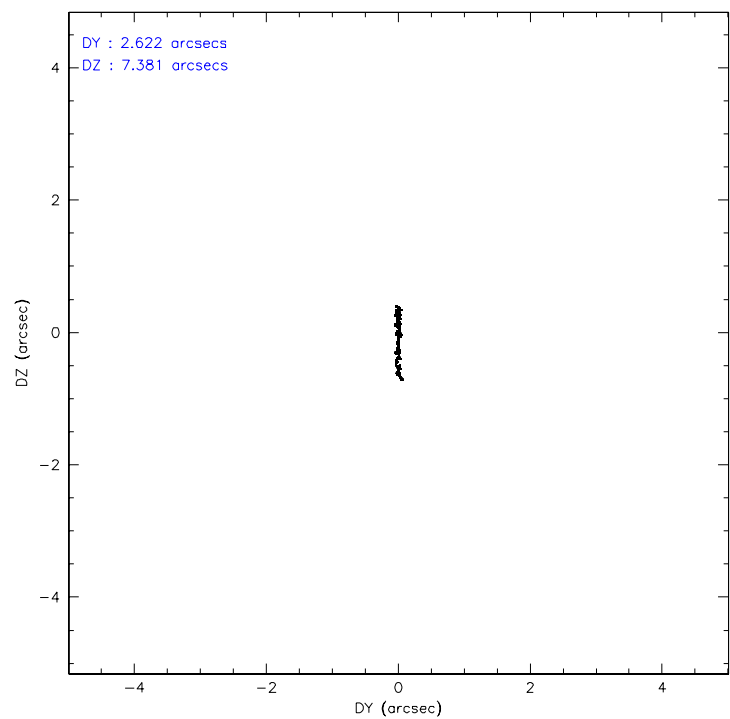
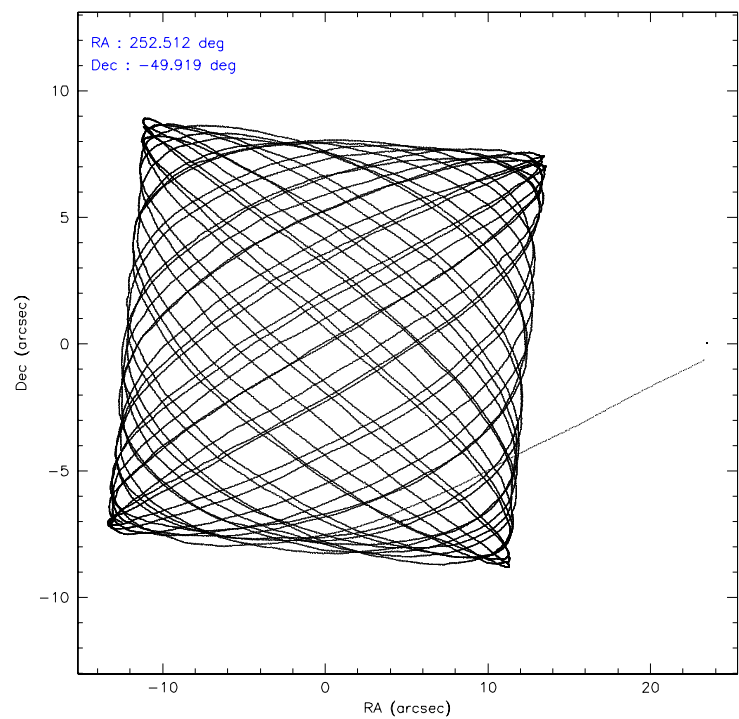
	<b>ccd 7</b>
level 1 events	34232
rejected events	14285
rejected %	41%

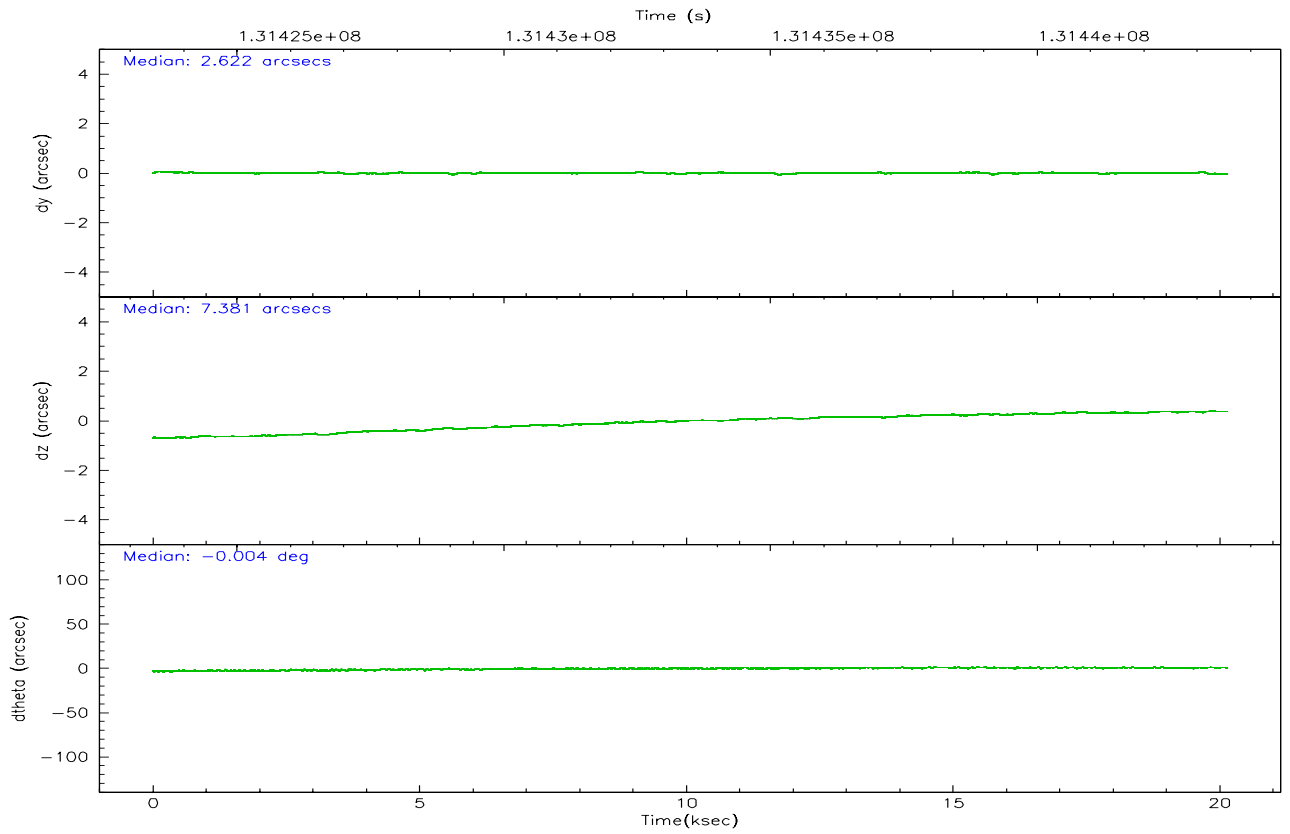
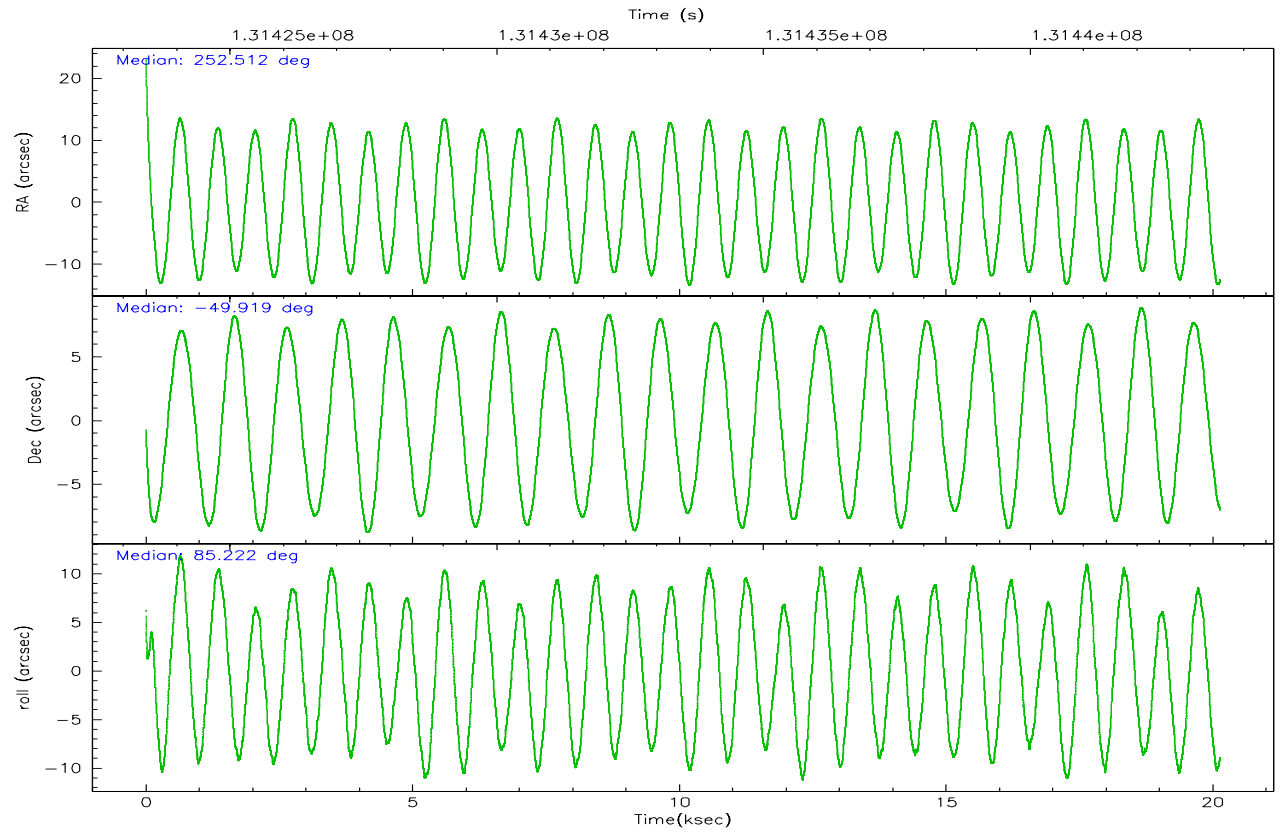
	<b>ccd 7</b>
grade 0 events	3137
	9%
grade 1 events	73
	0%
grade 2 events	5204
	15%
grade 3 events	2171
	6%
grade 4 events	2063
	6%
grade 5 events	2048
	5%
grade 6 events	7801
	22%
grade 7 events	11735
	34%

## 2.2 Compared Parameters

Parameter	Planned	Actual	Parameter	Planned	Actual
Instrument	ACIS	ACIS	Obspar format version number	6	6
Detector	ACIS-7	ACIS-7	Obspar file type	PREDICTED	ACTUAL
Grating	NONE	NONE	Obspar update status	NONE	UPDATED
Data mode	FAINT	FAINT	On-chip summing requested	N	N
Observation mode	POINTING	POINTING	Subarray requested	1/8	1/8
Pointing RA	252.531181	252.5126533975484	Subarray start row	0	449
Pointing Dec	-49.943253	-49.91875903149118	Subarray row count	1024	128
Pointing Roll	85.083487	85.22592525522988	Alternating exposures requested	N	N
SIM focus pos (mm)	-0.684267	-0.6828225247311905	Primary exposure time	0.000000	0.4
SIM defocus (mm)	0	0.001444936568705701			
SIM translation stage pos (mm)	-190.132523	-190.1400660498719			
SIM translation stage offset (mm)	0	0.00754346686406393			
Observation start time	131423563.184000	131422589.10861			
Observation start date	2002-03-02T02:31:39	2002-03-02T02:16:29			
Observation end time	131443563.184000	131444050.55947			
Observation end date	2002-03-02T08:04:59	2002-03-02T08:14:10			
Read mode	TIMED	TIMED			

## 2.3 Aspect



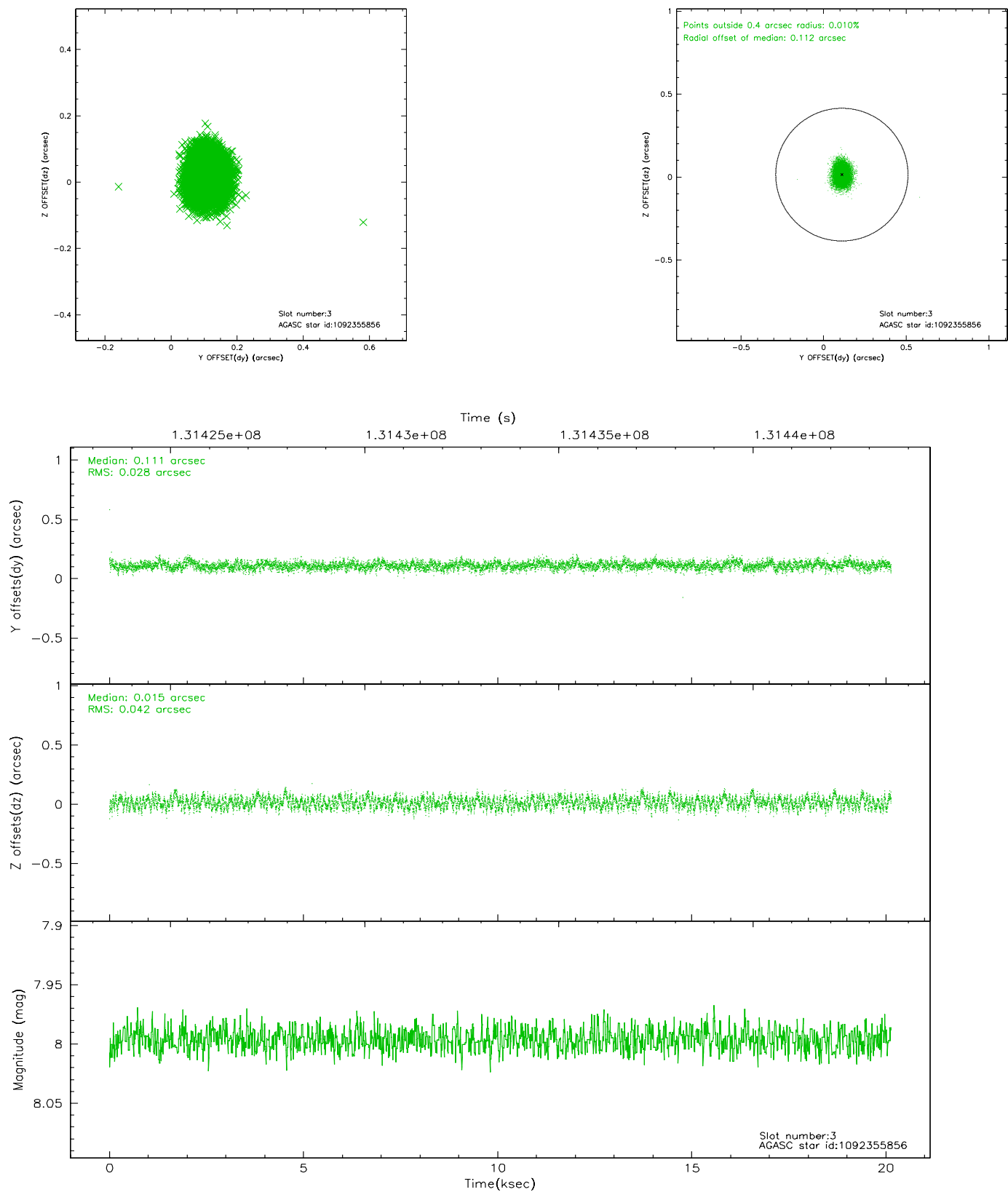


### Slot Statistics

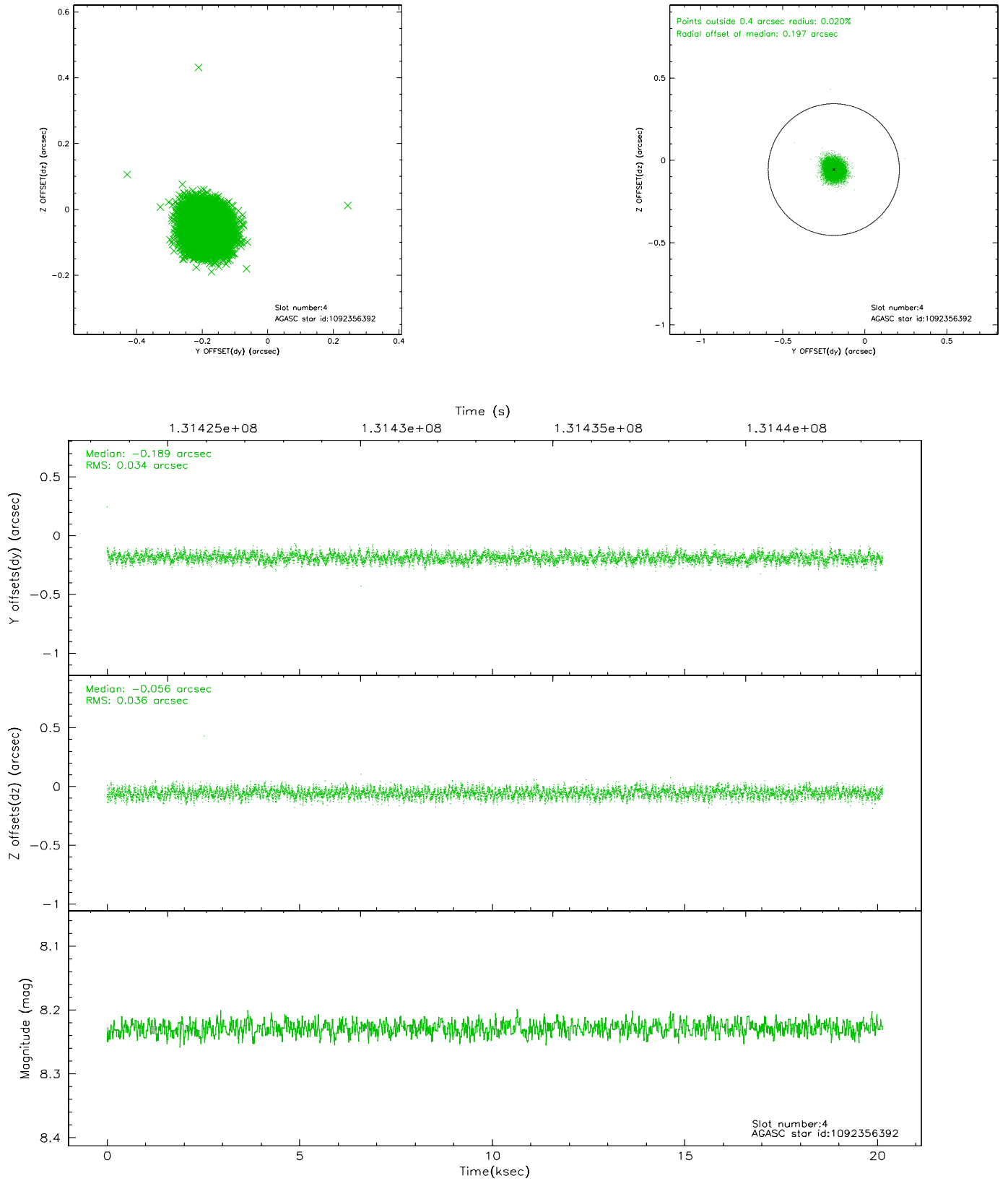
slot	status	id	mag	n_pts	med_dy	med_dz	dr1	dr2	ra	dec	mean_y	mean_z
0	FID	ACIS-S-2	7.11	4913	-0.001	0.030	0.010	0.017	0.000000	0.000000	-755.26	-1728.45
1	FID	ACIS-S-4	7.20	4913	-0.089	-0.007	0.007	0.012	0.000000	0.000000	2157.85	179.80
2	FID	ACIS-S-5	7.24	4913	0.059	-0.014	0.009	0.015	0.000000	0.000000	-1807.80	173.68
3	GUIDE	1092355856	8.00	9824	0.111	0.015	0.054	0.085	252.380362	-50.402230	-1674.77	202.51
4	GUIDE	1092356392	8.23	9825	-0.189	-0.056	0.053	0.083	252.320454	-49.578691	1265.73	601.99
5	GUIDE	1092487776	8.58	9814	0.130	0.354	0.079	0.120	253.418062	-50.236939	-888.68	-2126.46
6	GUIDE	1092358240	9.30	9807	0.000	0.000	0.074	0.124	252.578586	-49.434240	1836.38	45.79
7	GUIDE	1092359992	9.46	9815	-0.049	-0.313	0.096	0.155	251.557386	-49.813189	259.34	2291.81

## 2.4 Star Slots

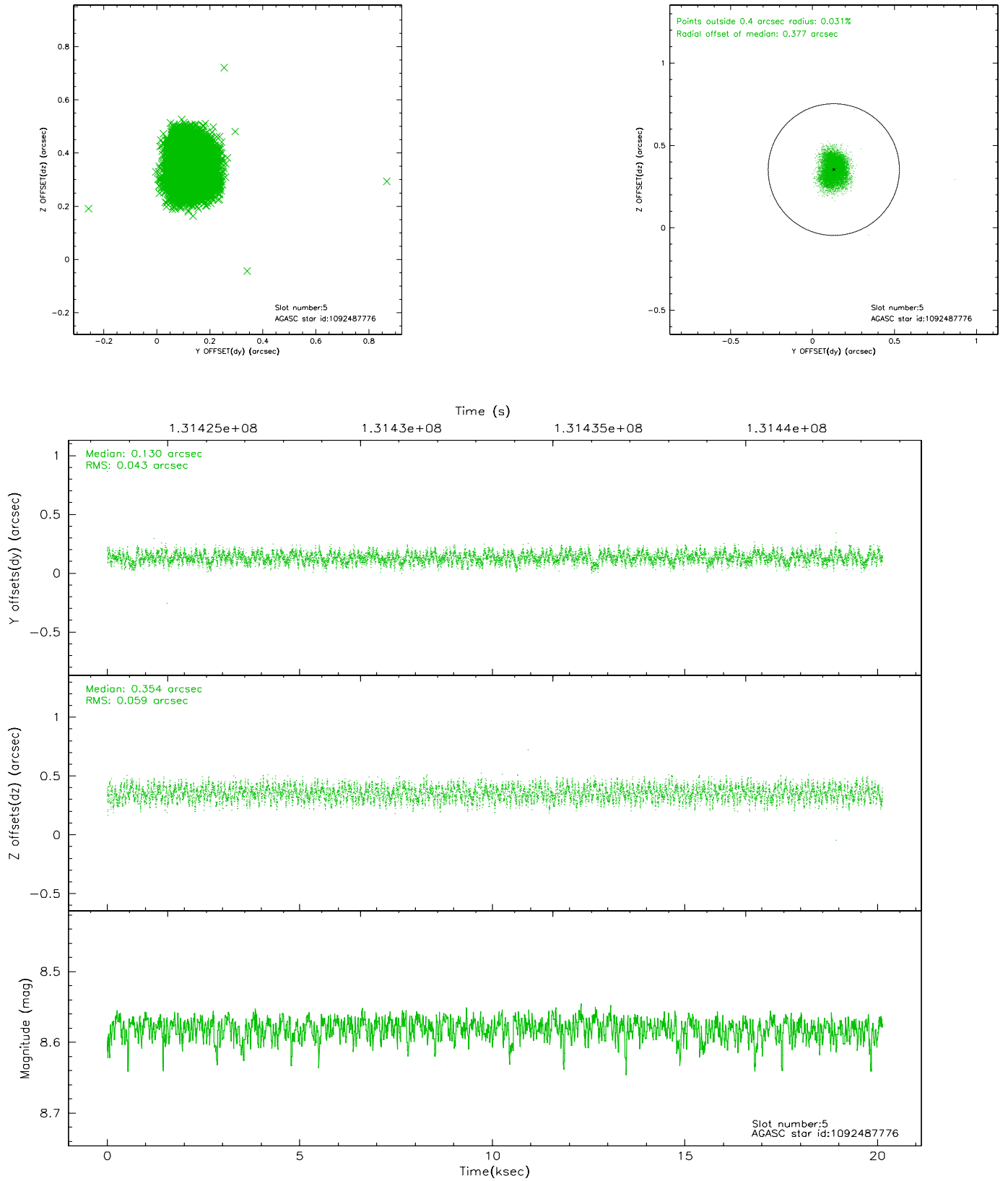
### 2.4.1 Slot 3



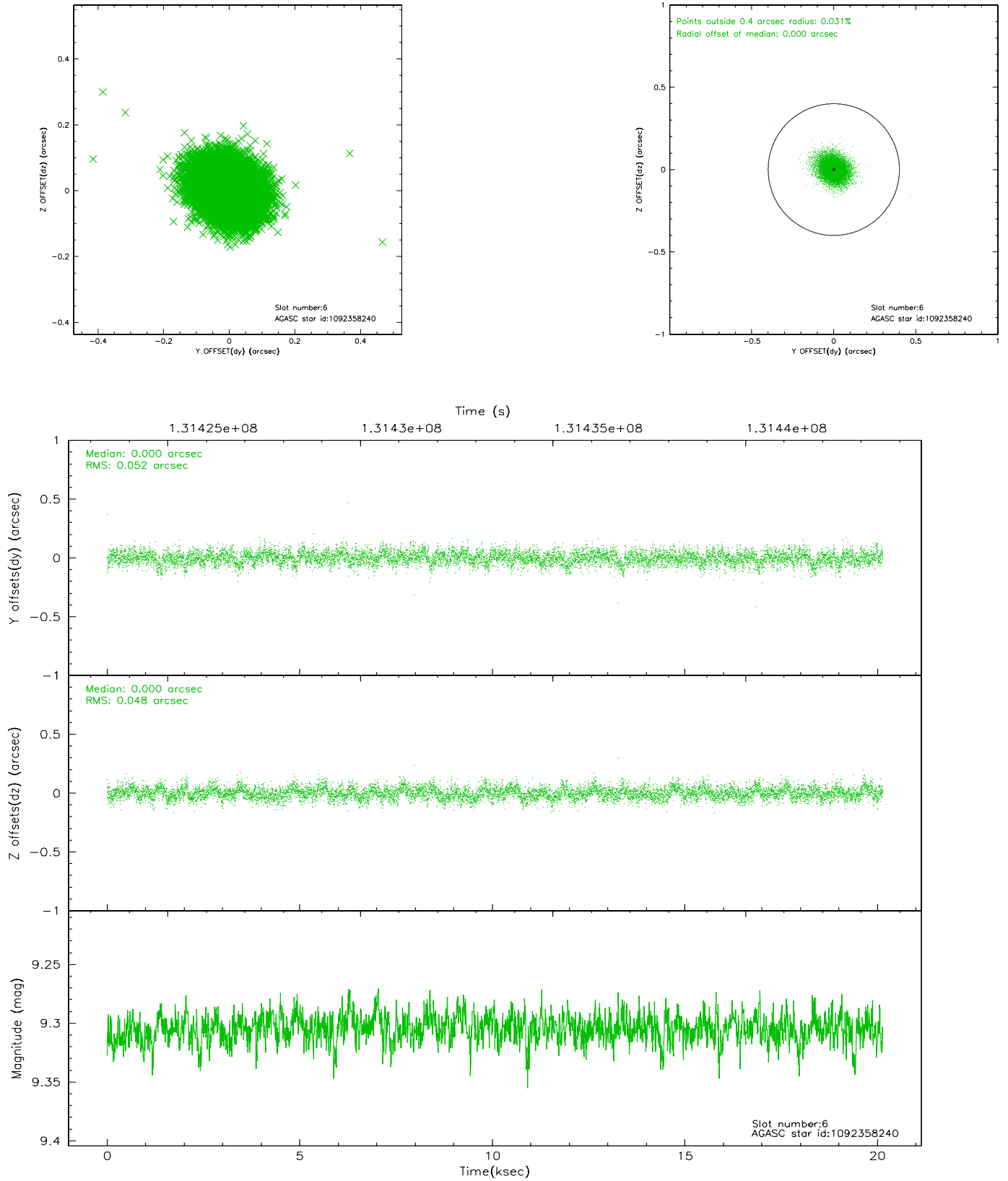
## 2.4.2 Slot 4



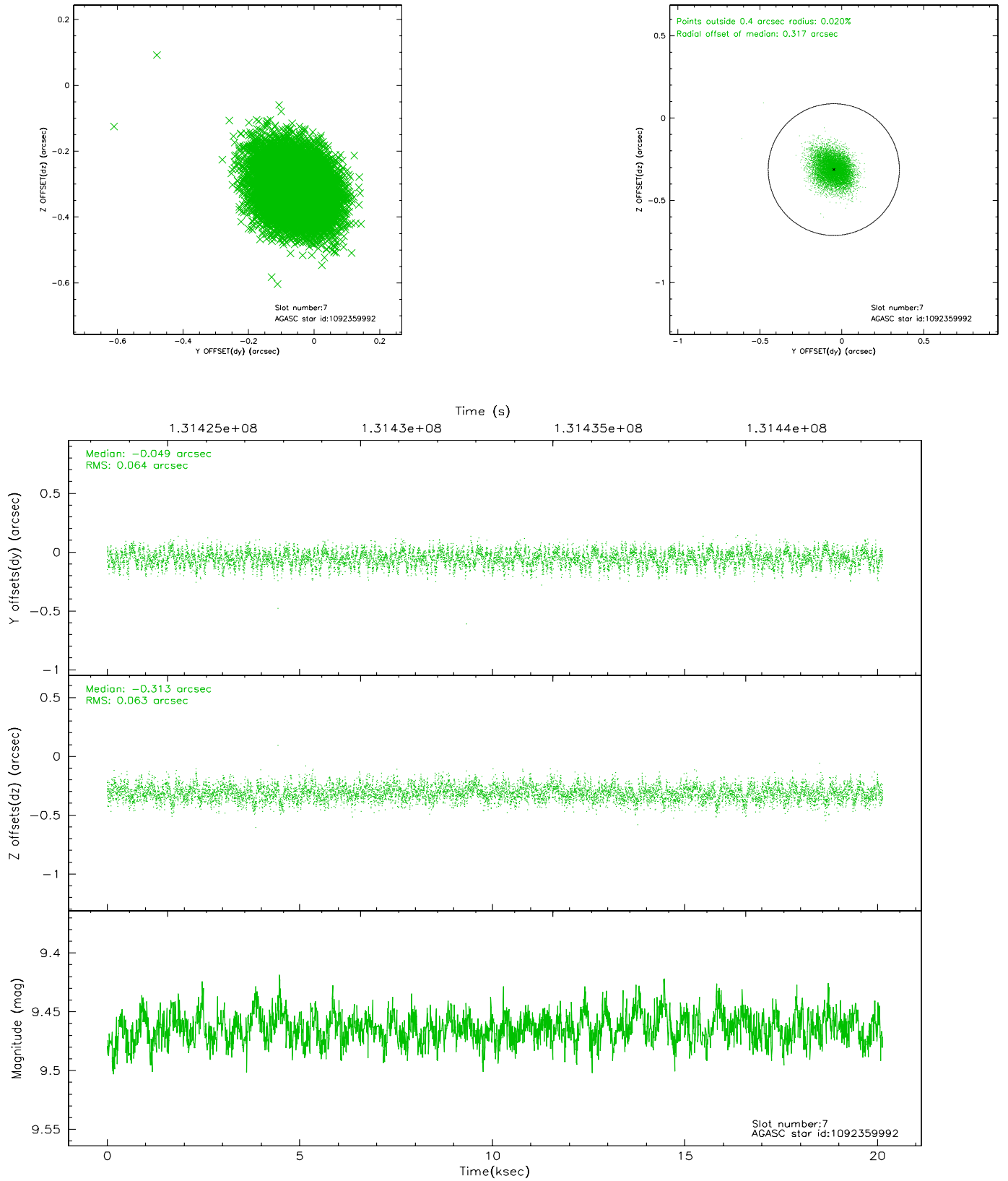
### 2.4.3 Slot 5



## 2.4.4 Slot 6

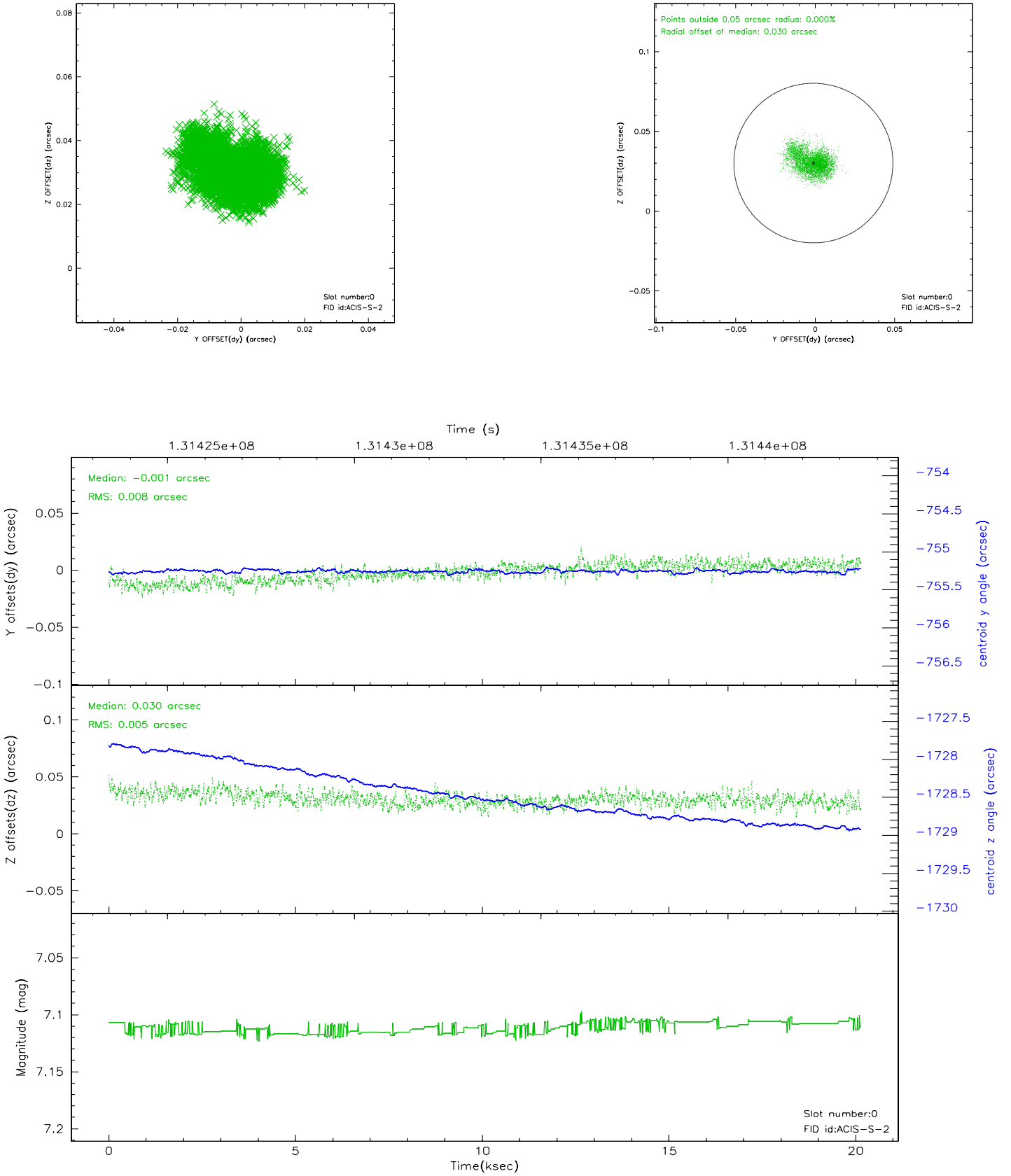


## 2.4.5 Slot 7

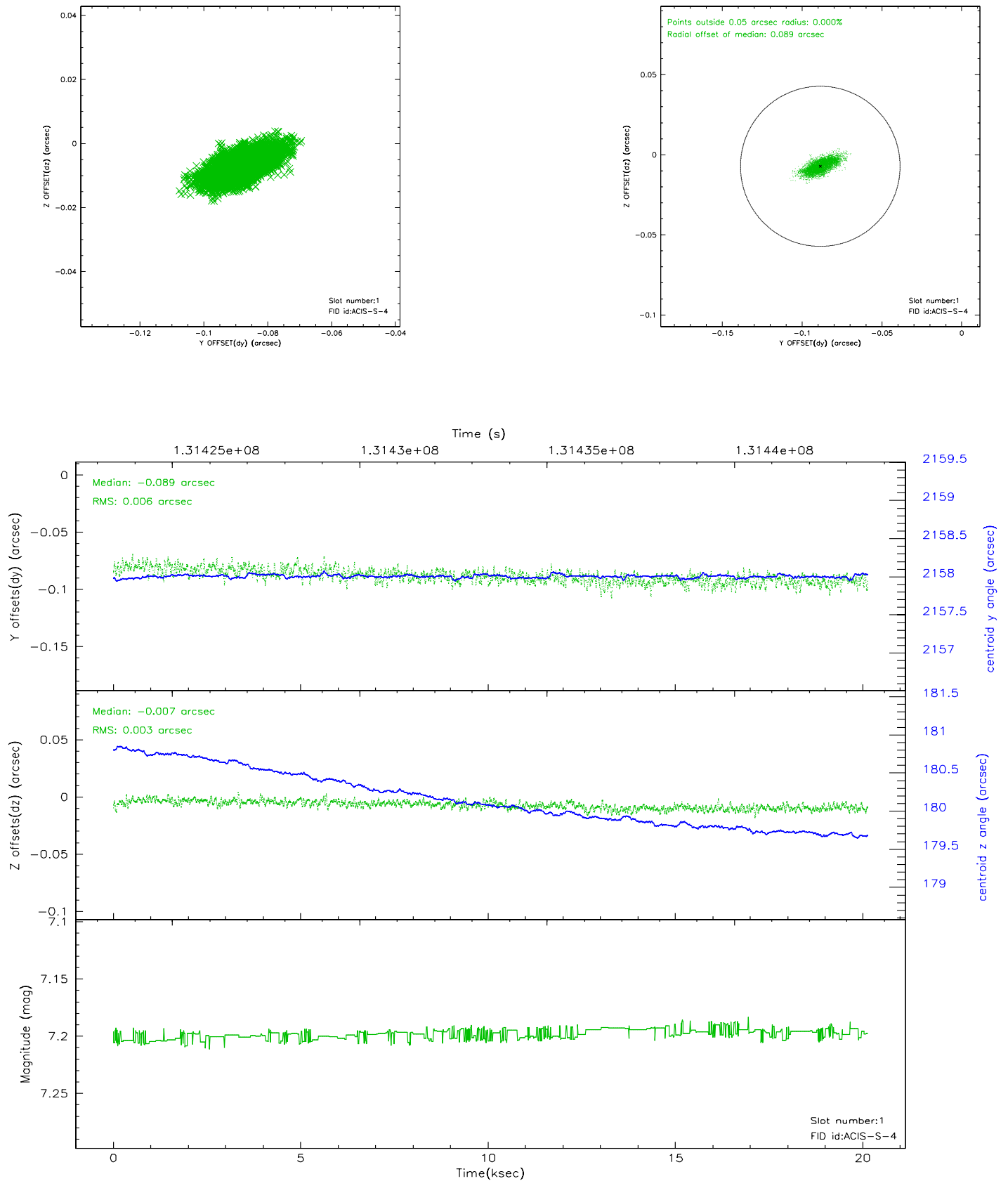


## 2.5 FID Slots

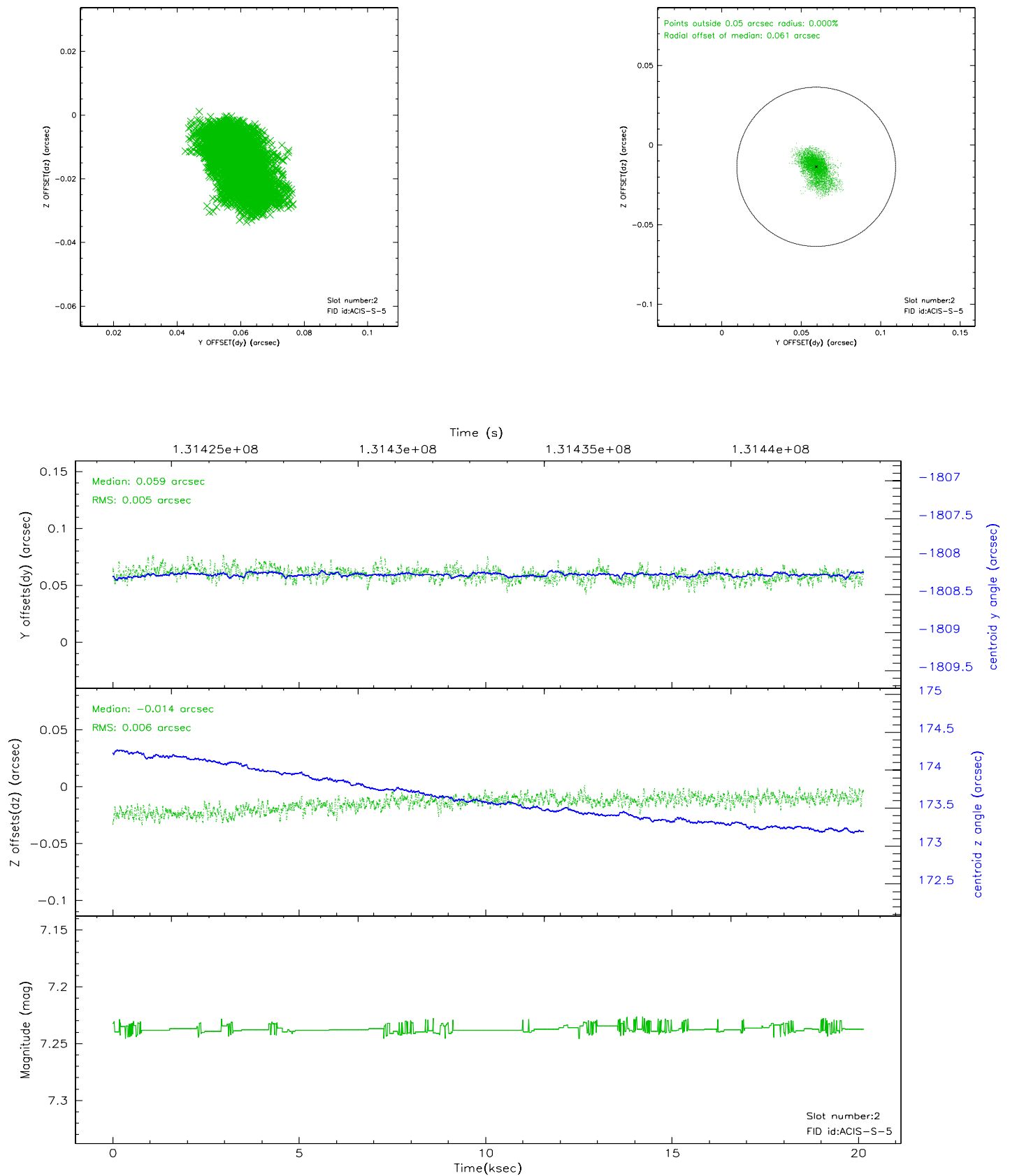
### 2.5.1 Slot 0



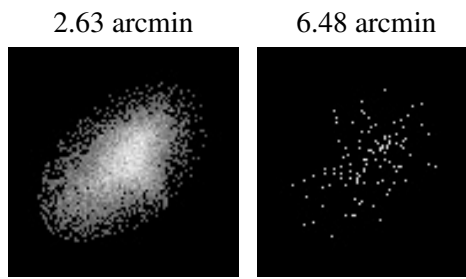
## 2.5.2 Slot 1



### 2.5.3 Slot 2



### 3 Point Sources



## A Summary

### A.1 Status

V&V Scientist	Joy Nichols
V&V Date (YYYY-MM-DD)	2006.09.06
V&V Edition	1
V&V Disposition and Status	OK
V&V Charge Time	20.14

### A.2 Comments