

V&V Reference Report

L2 ASCDS Version : 7.6.9

Observation 2251 - L2 Version 001
Chandra X-Ray Center

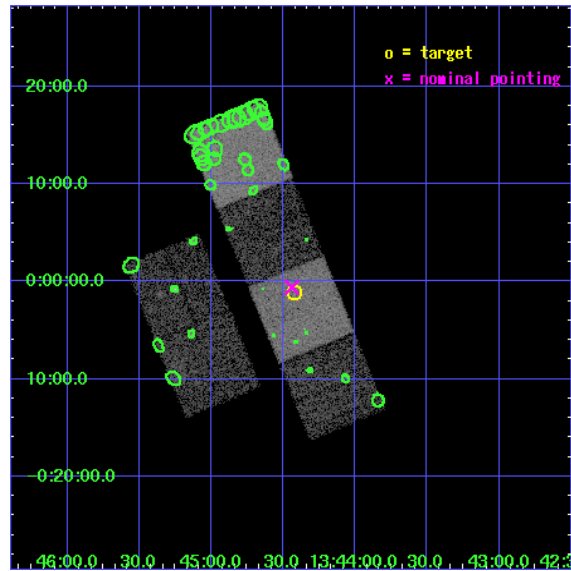
L2 Processing Date : Nov 2 2006

Contents

1	Front	2
2	OBI	3
2.1	OBI	3
2.1.1	Images	3
2.1.2	Bias	3
2.1.3	Parameters	4
2.1.4	Events	4
2.2	Compared Parameters	5
2.3	Aspect	6
2.4	Star Slots	9
2.4.1	Slot 3	9
2.4.2	Slot 4	10
2.4.3	Slot 5	11
2.4.4	Slot 6	12
2.4.5	Slot 7	13
2.5	FID Slots	14
2.5.1	Slot 0	14
2.5.2	Slot 1	15
2.5.3	Slot 2	16
3	Point Sources	17
A	Summary	18
A.1	Status	18
A.2	Comments	18

1 Front

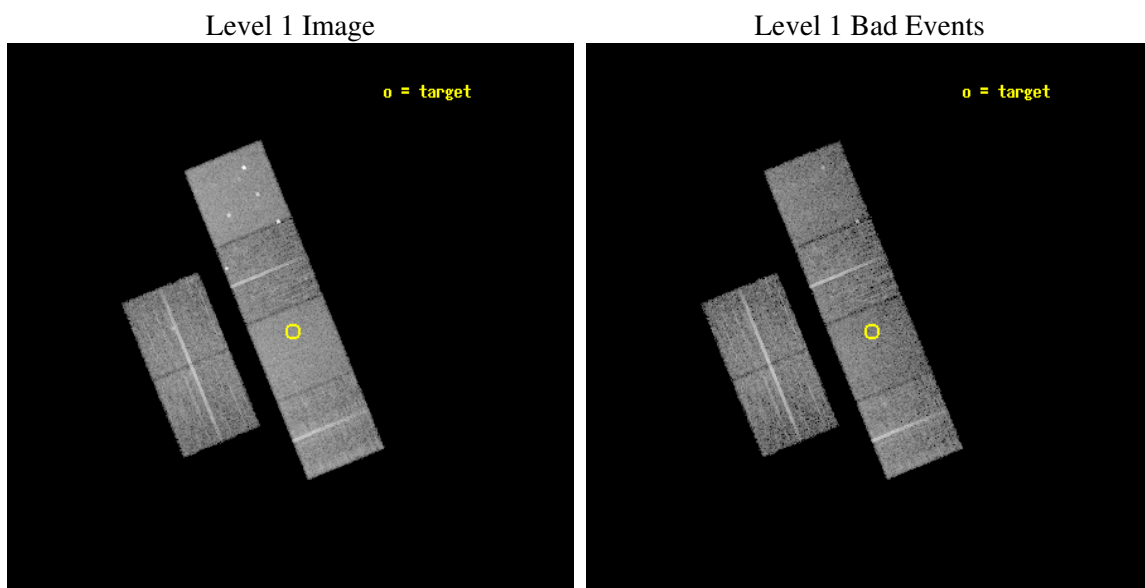
seq_num	900078
obs_id	2251
title	THE NATURE OF NARROW-LINE, FIR-LUMINOUS, X-RAY GALAXIES
observer	PROFESSOR TOM SHANKS
object	F864X:012
dtcycle	0
cycle	P
ra_targ	206.104583
dec_targ	-0.018611
ra_nom	206.10988937587
dec_nom	-0.010290113711792
roll_nom	67.806605232657
revision	2
ontime	9756.8000090867
livetime	9633.253532532
ontime2	9753.5590488464
ontime3	9756.8000090867
ontime5	9756.8000090867
ontime6	9756.8000090867
ontime7	9756.8000090867
ontime8	9753.5590787679
l2events	87602



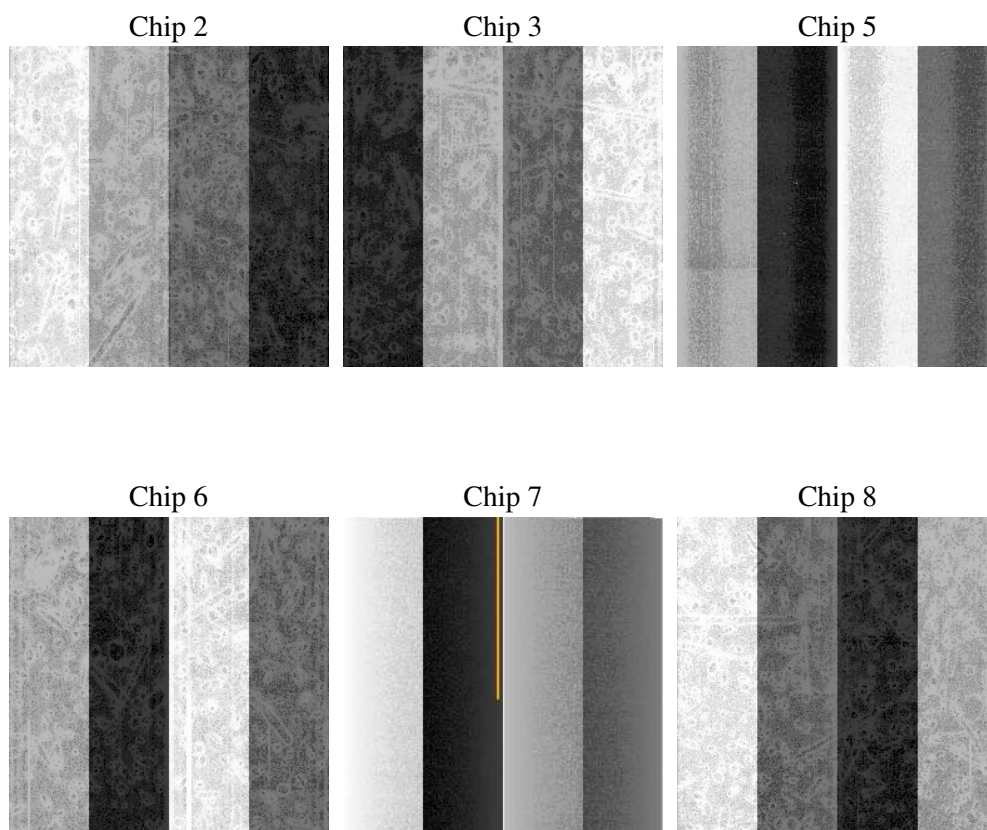
2 OBI

2.1 OBI

2.1.1 Images



2.1.2 Bias



2.1.3 Parameters

obi_num	0
ascdsver	7.6.9
caldbver	3.2.3
date	2006-11-02T13:31:18
revision	2

sched_exp_time	10000.000000
ontime	9761.8840442449
ontime2	9758.6430840045
ontime3	9761.8840143234
ontime5	9761.8840442449
ontime6	9761.8840442449
ontime7	9761.8840442449
ontime8	9758.6429743171
l1events	410854

2.1.4 Events

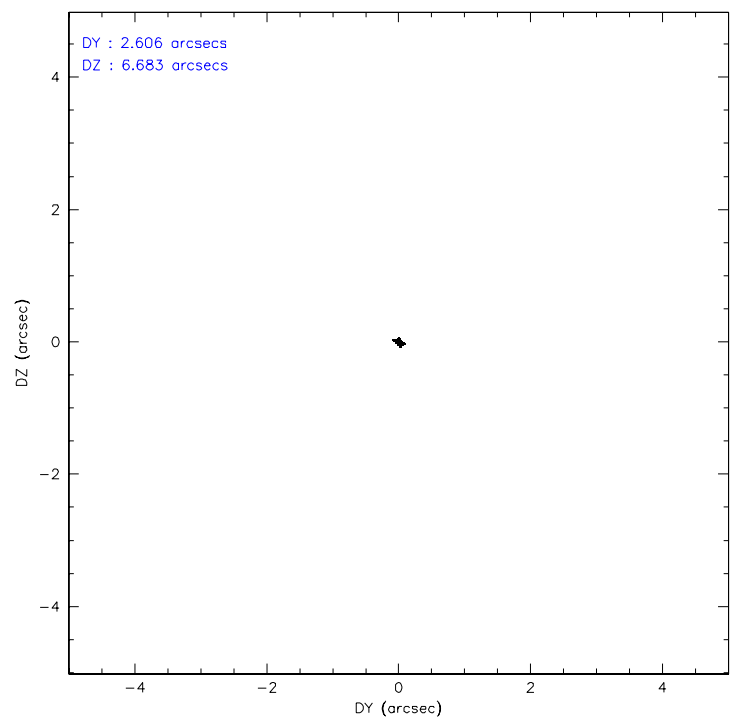
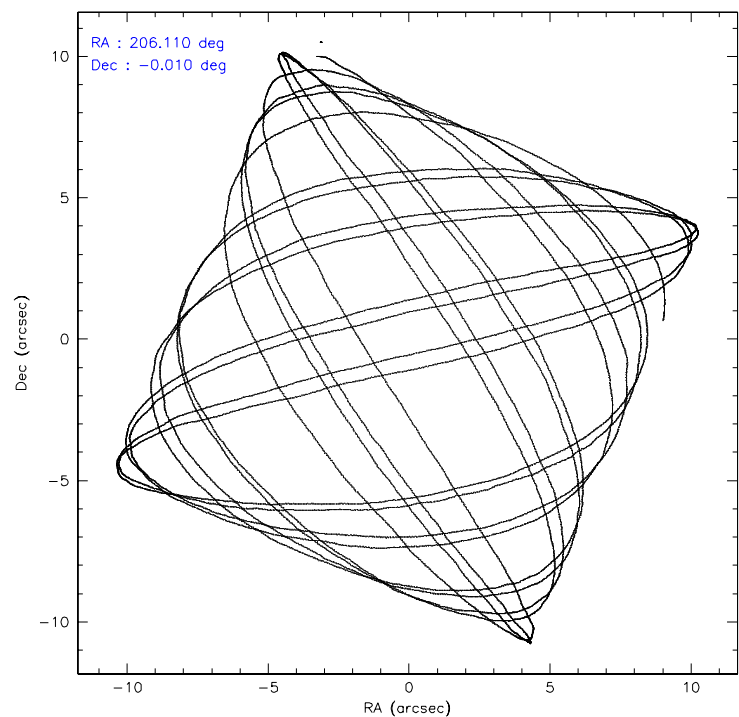
	ccd 2	ccd 3	ccd 5	ccd 6	ccd 7	ccd 8
level 1 events	59860	57467	84259	57860	75668	75740
rejected events	52652	50623	45797	50281	46326	61236
rejected %	87%	88%	54%	86%	61%	80%

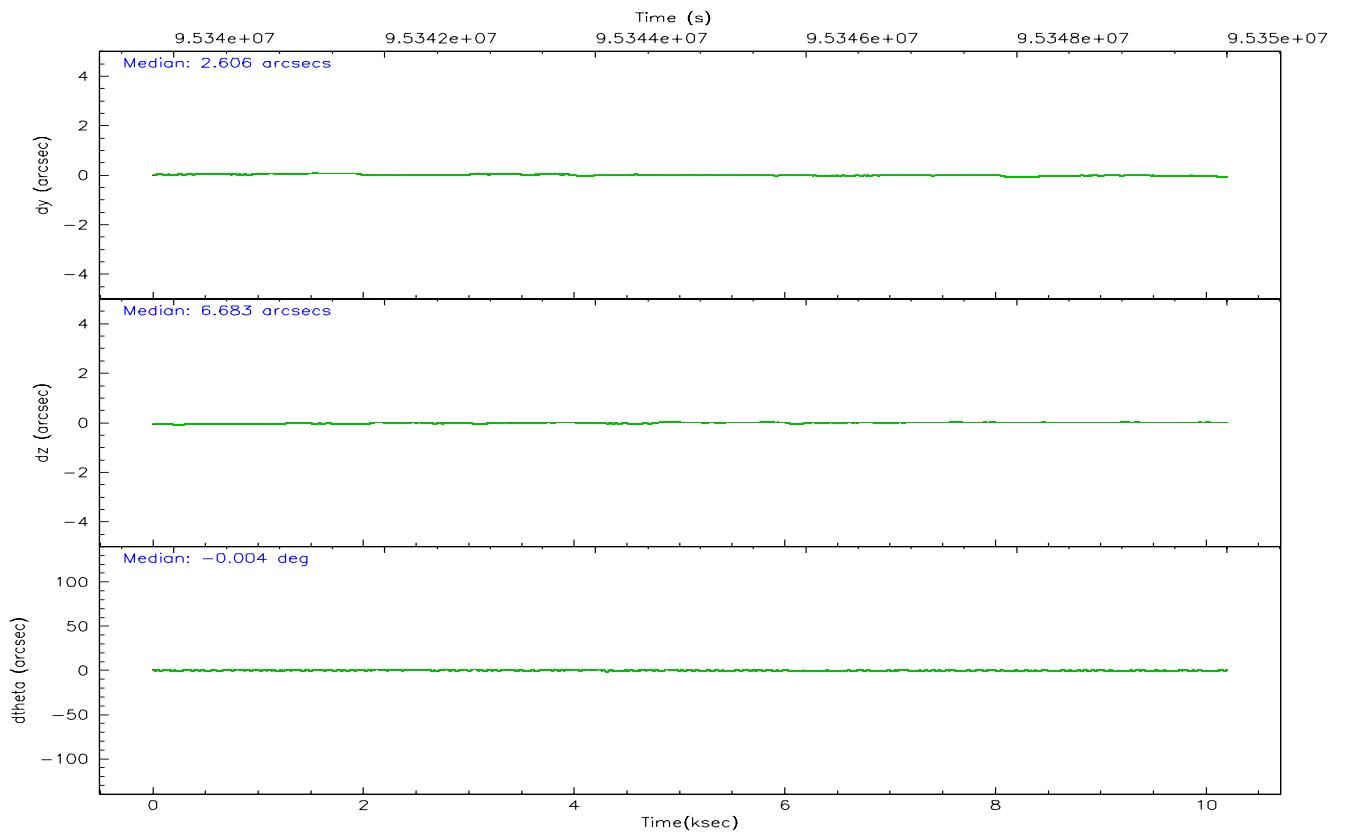
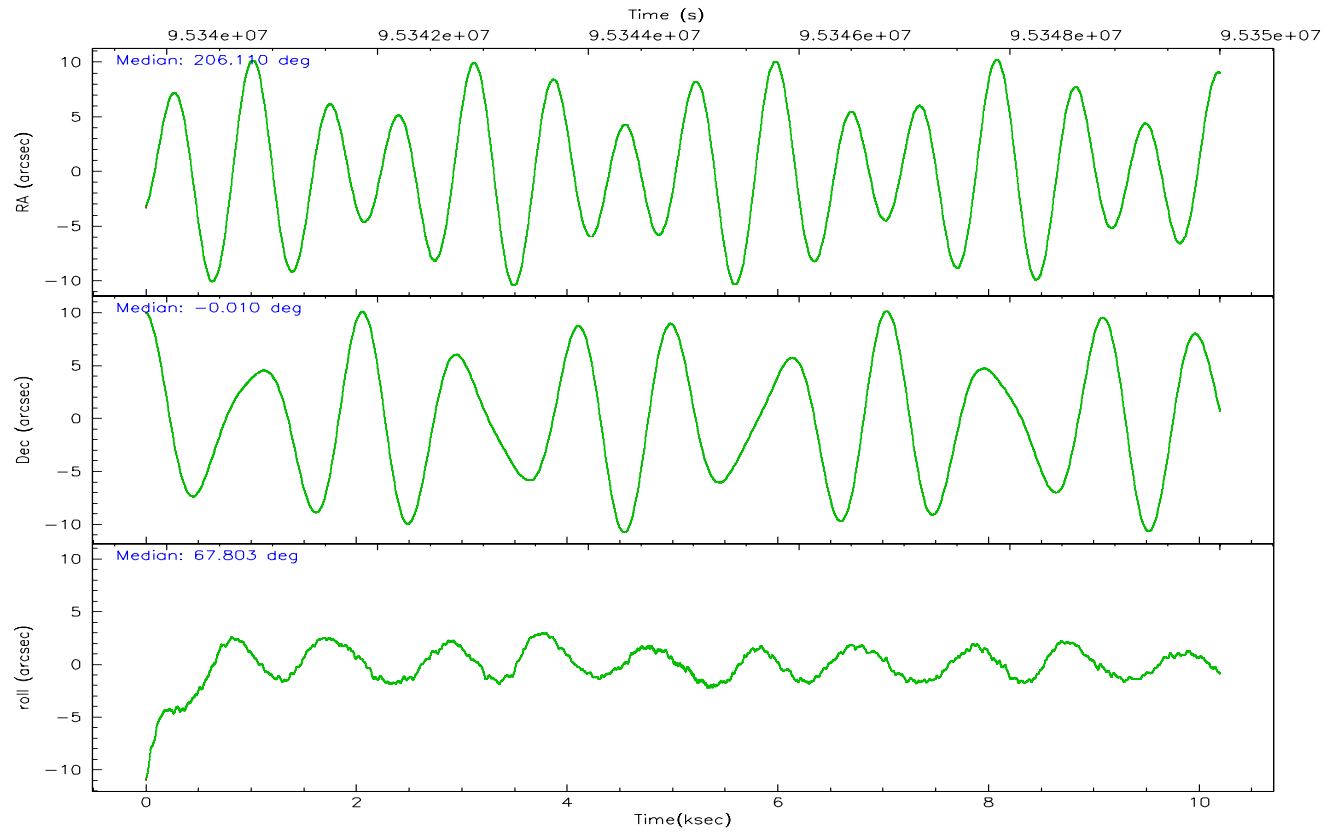
	ccd 2	ccd 3	ccd 5	ccd 6	ccd 7	ccd 8
grade 0 events	3308	3120	4872	3463	2008	4747
	5%	5%	5%	5%	2%	6%
grade 1 events	26	26	190	29	40	47
	0%	0%	0%	0%	0%	0%
grade 2 events	1483	1276	11153	1402	7124	3052
	2%	2%	13%	2%	9%	4%
grade 3 events	655	611	950	712	1461	1555
	1%	1%	1%	1%	1%	2%
grade 4 events	616	671	932	695	1522	1474
	1%	1%	1%	1%	2%	1%
grade 5 events	1955	2135	4061	2477	5029	2998
	3%	3%	4%	4%	6%	3%
grade 6 events	1149	1172	20580	1311	17249	3683
	1%	2%	24%	2%	22%	4%
grade 7 events	50668	48456	41521	47771	41235	58184
	84%	84%	49%	82%	54%	76%

2.2 Compared Parameters

Parameter	Planned	Actual	Parameter	Planned	Actual
Instrument	ACIS	ACIS	Obspar format version number	6	6
Detector	ACIS-235678	ACIS-235678	Obspar file type	PREDICTED	ACTUAL
Grating	NONE	NONE	Obspar update status	NONE	UPDATED
Data mode	FAINT	FAINT	Number of optional ACIS chips dropped	0	0
Observation mode	POINTING	POINTING	On-chip summing requested	N	N
Pointing RA	206.113815	206.1098893758701	Subarray requested	NONE	NONE
Pointing Dec	-0.037362	-0.01029011371179179	Alternating exposures requested	N	N
Pointing Roll	67.649974	67.80660523265705	Primary exposure time	0.000000	3.2
SIM focus pos (mm)	-0.684267	-0.6828225247311905			
SIM defocus (mm)	0	0.001444936568705701			
SIM translation stage pos (mm)	-190.132523	-190.1425803651734			
SIM translation stage offset (mm)	0	0.01005778216563158			
Observation start time	95340001.184000	95339624.926007			
Observation start date	2001-01-08T11:18:57	2001-01-08T11:13:44			
Observation end time	95350001.184000	95350351.55141801			
Observation end date	2001-01-08T14:05:37	2001-01-08T14:12:31			
Read mode	TIMED	TIMED			

2.3 Aspect



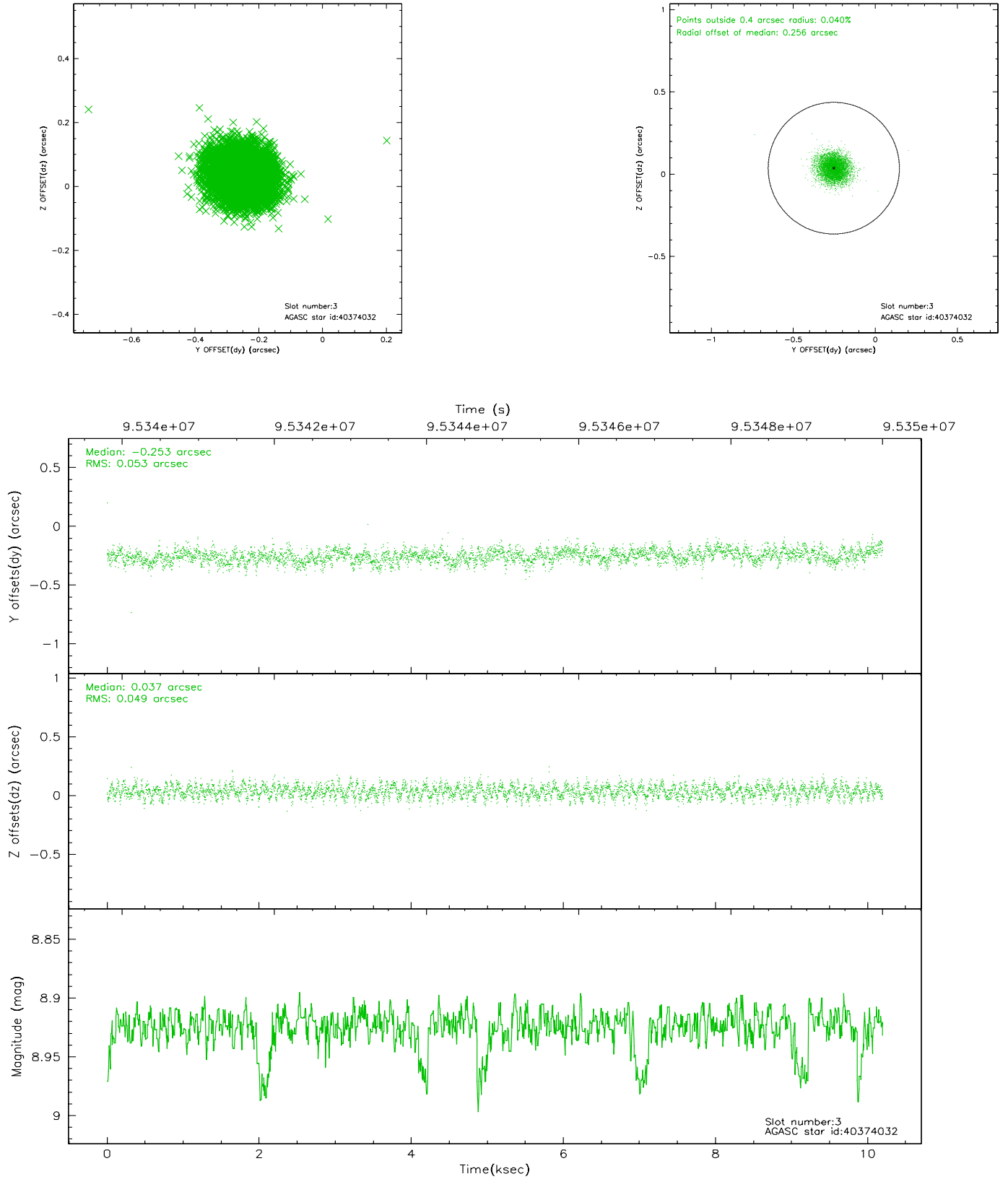


Slot Statistics

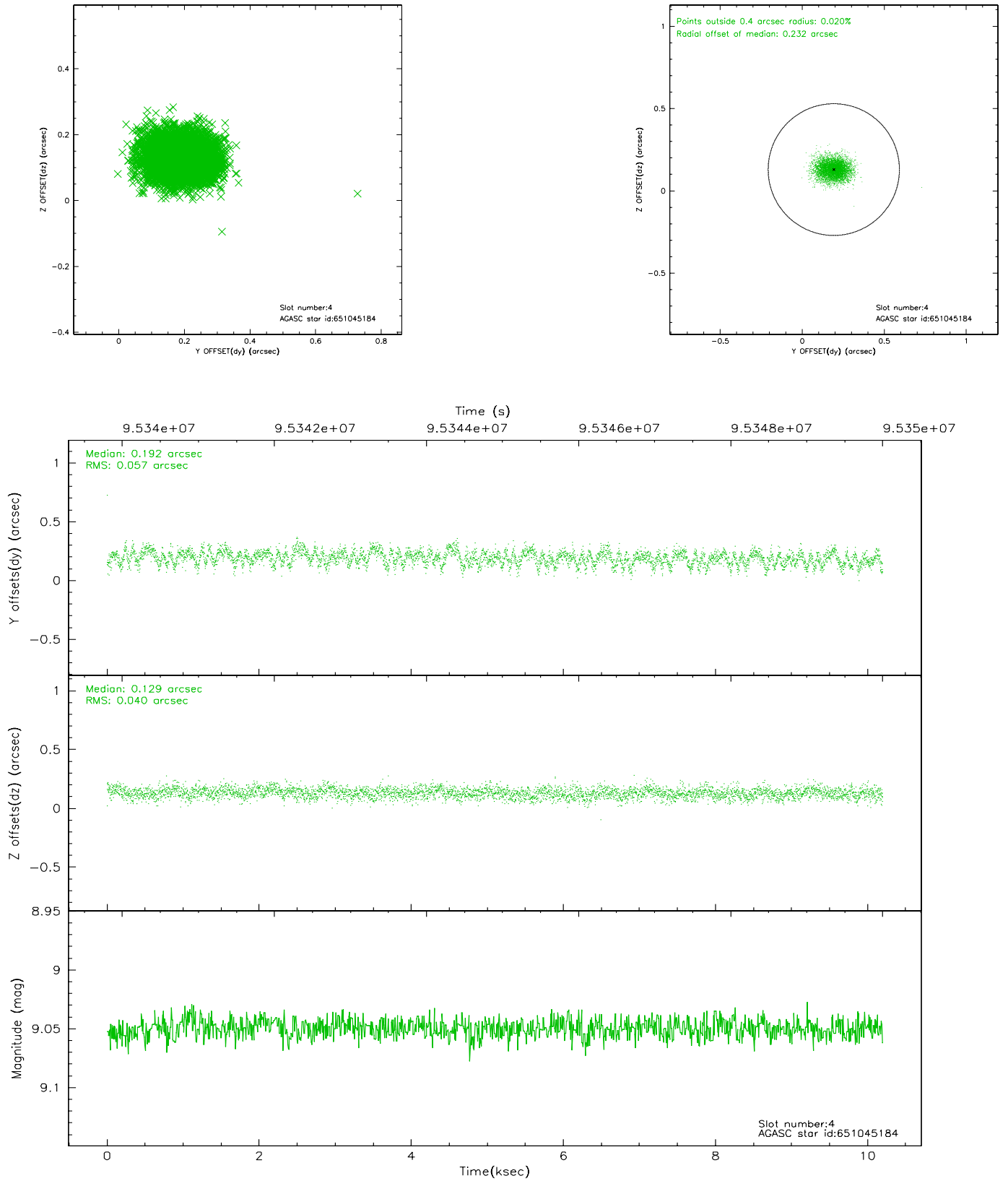
slot	status	id	mag	n_pts	med_dy	med_dz	dr1	dr2	ra	dec	mean_y	mean_z
0	FID	ACIS-S-2	7.11	2487	-0.010	0.032	0.013	0.017	0.000000	0.000000	-755.25	-1727.75
1	FID	ACIS-S-4	7.20	2487	-0.075	-0.004	0.018	0.024	0.000000	0.000000	2157.73	180.17
2	FID	ACIS-S-5	7.23	2488	0.055	-0.020	0.012	0.019	0.000000	0.000000	-1807.36	174.41
3	GUIDE	40374032	8.92	4976	-0.253	0.037	0.077	0.123	206.615207	0.446144	2297.03	-1008.03
4	GUIDE	651045184	9.05	4975	0.192	0.129	0.073	0.119	206.266135	-0.772896	-2238.86	-1514.98
5	GUIDE	651041032	9.15	4972	0.053	0.211	0.087	0.144	206.579270	-0.458065	-763.14	-2126.08
6	GUIDE	40379536	9.24	4973	-0.126	0.056	0.075	0.121	206.530552	0.347967	1854.19	-860.96
7	GUIDE	651040064	9.24	4974	0.131	-0.427	0.088	0.142	205.482042	-0.129128	-1169.56	1976.57

2.4 Star Slots

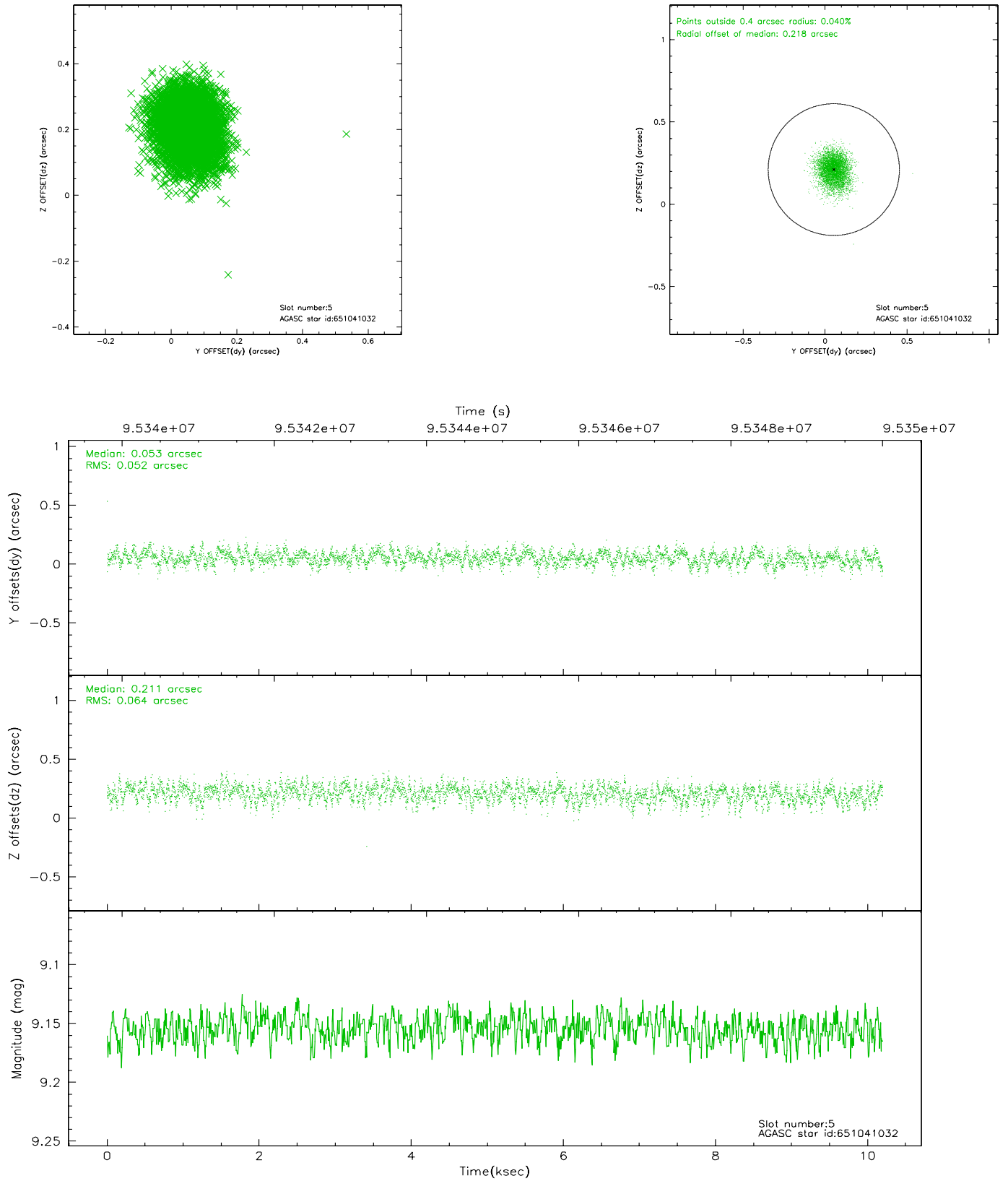
2.4.1 Slot 3



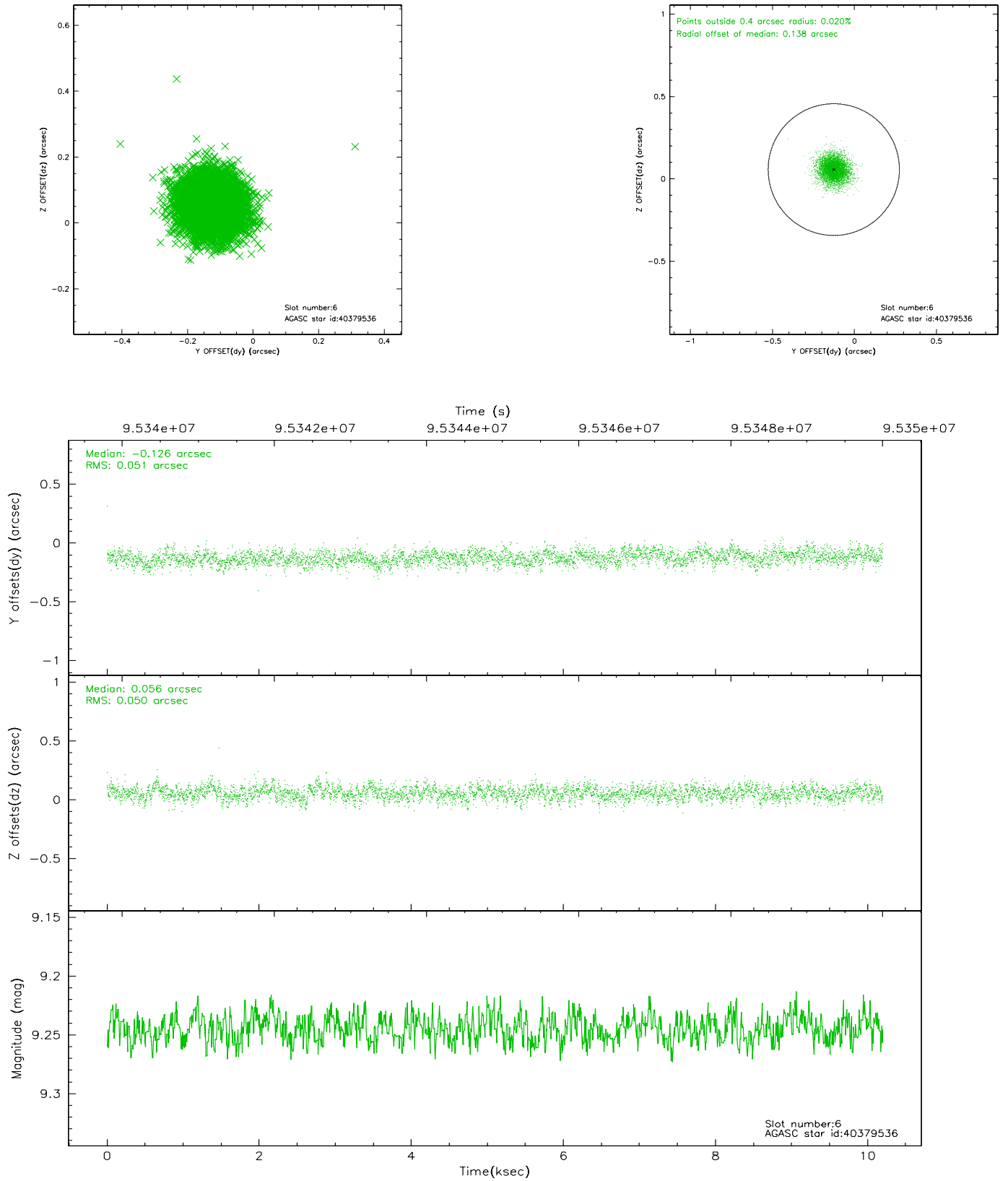
2.4.2 Slot 4



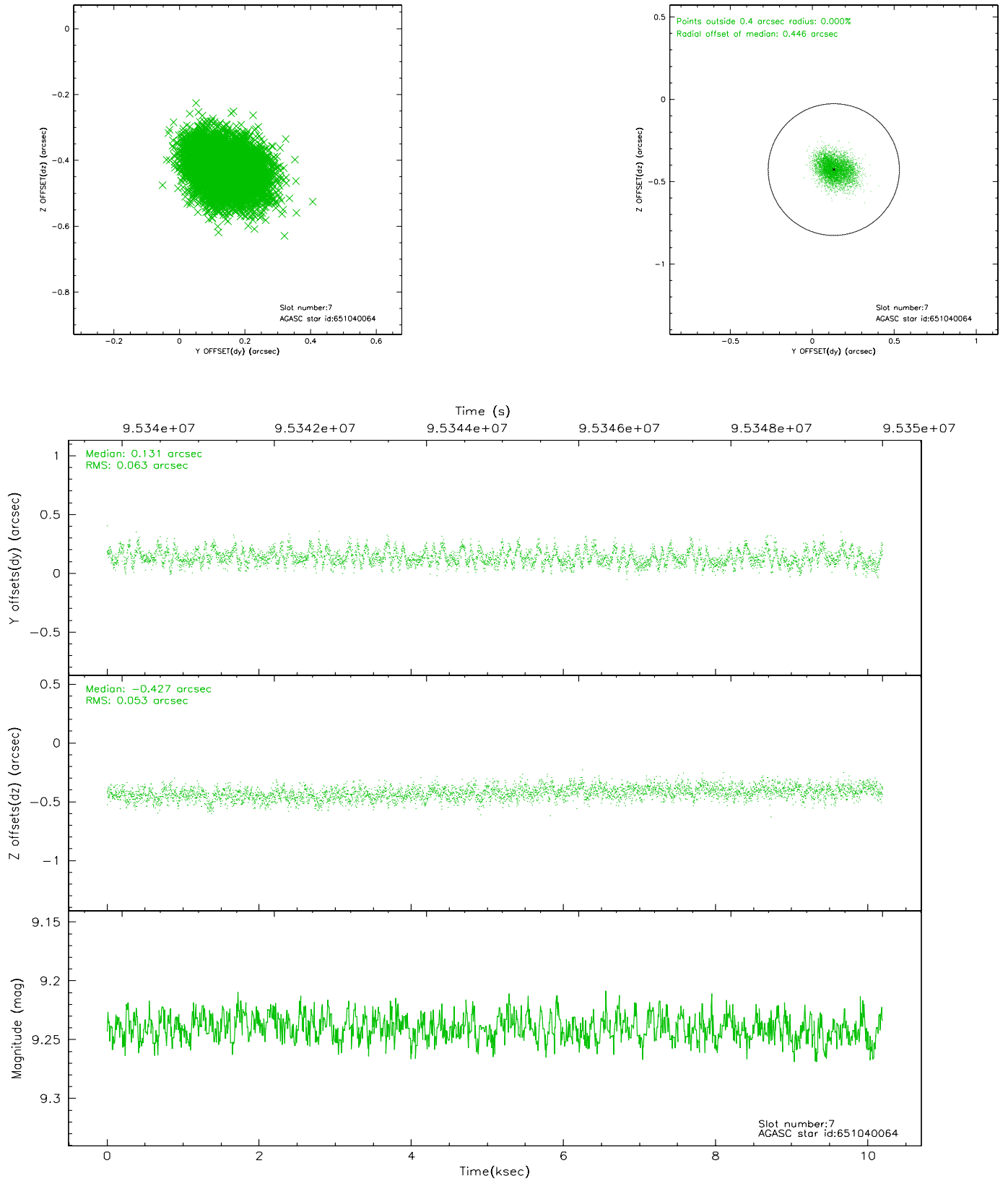
2.4.3 Slot 5



2.4.4 Slot 6

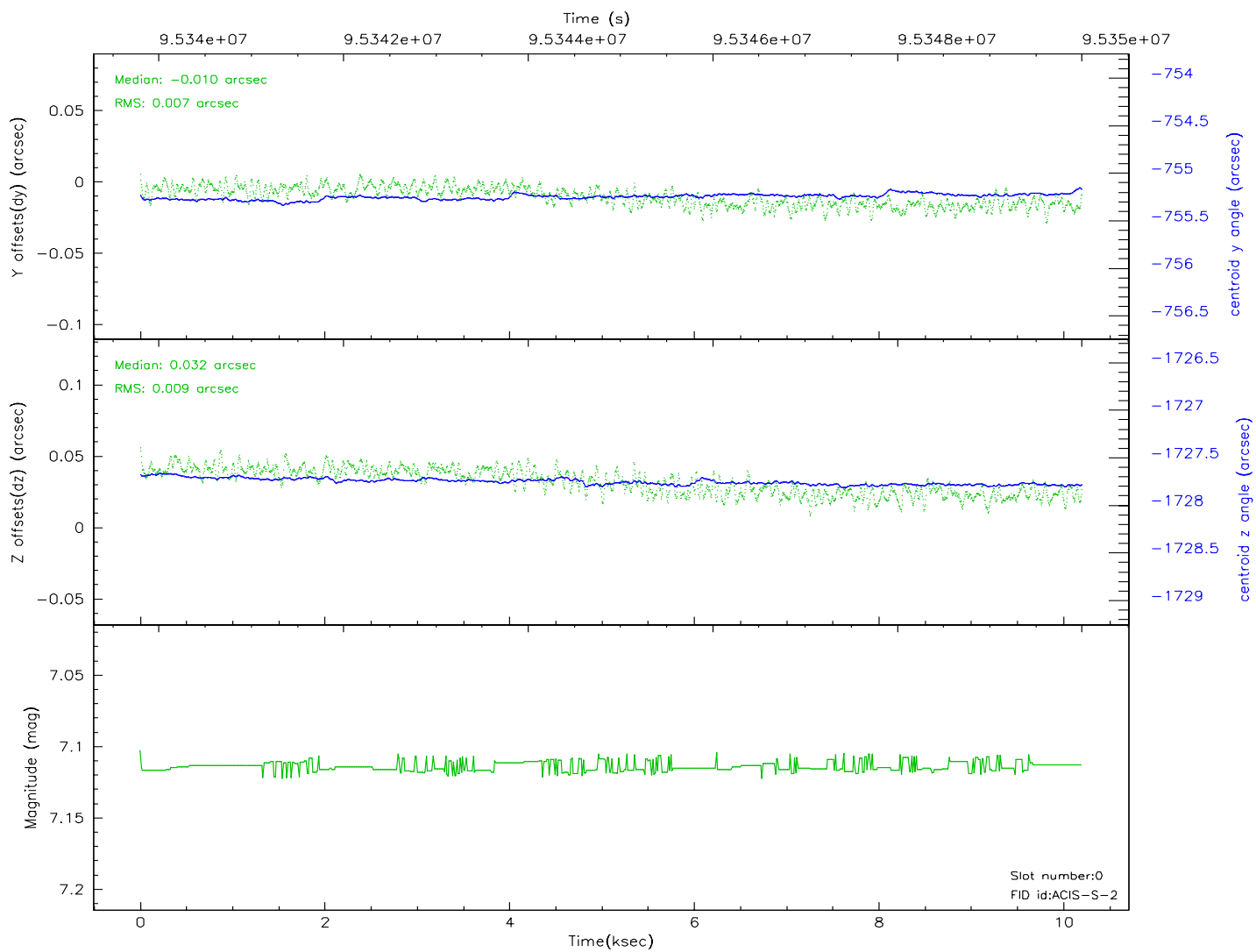
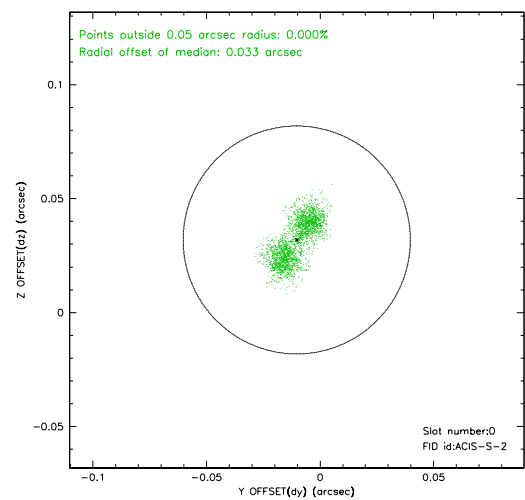
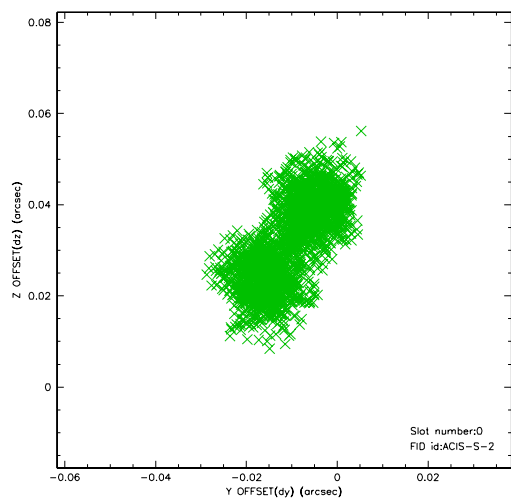


2.4.5 Slot 7

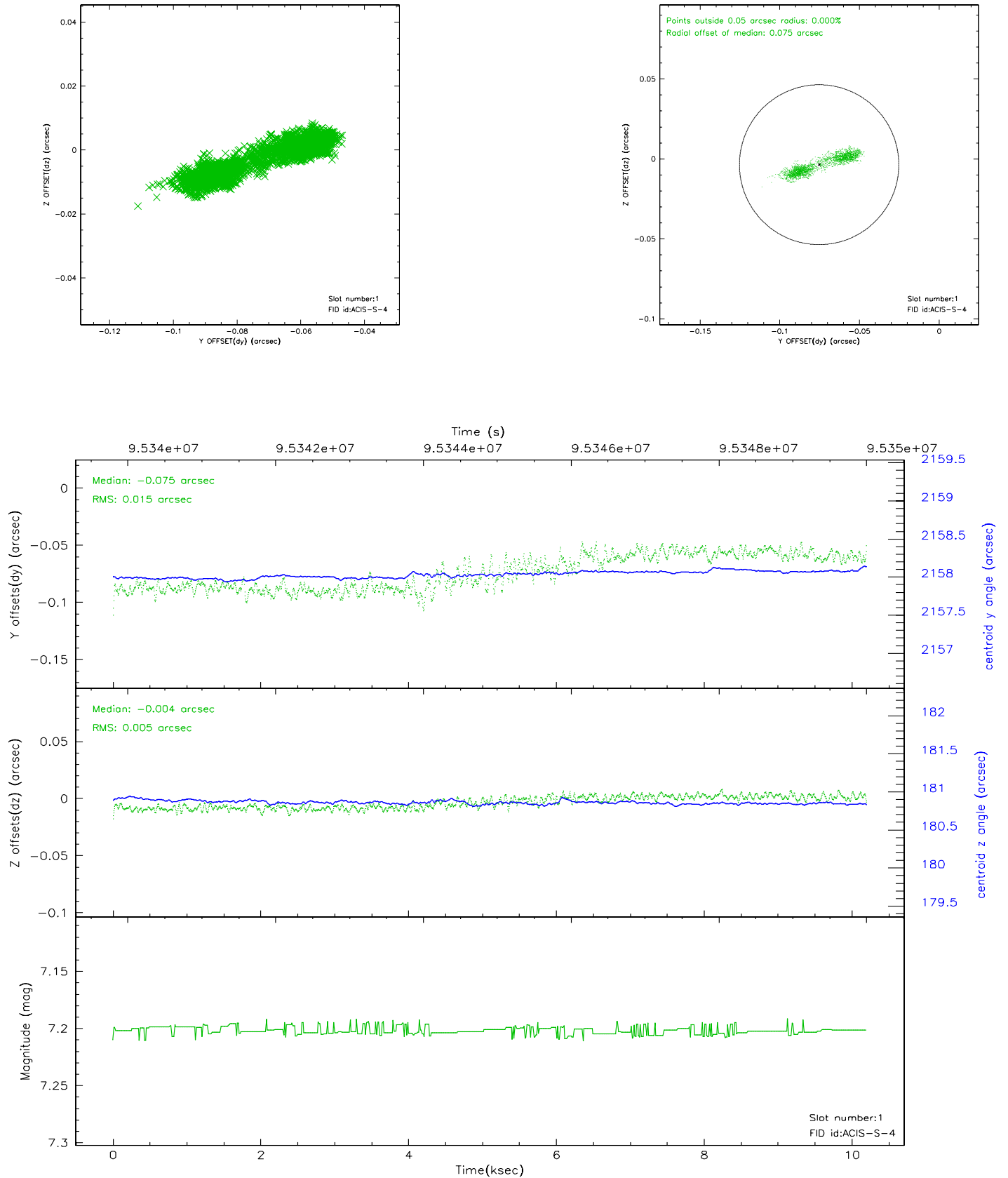


2.5 FID Slots

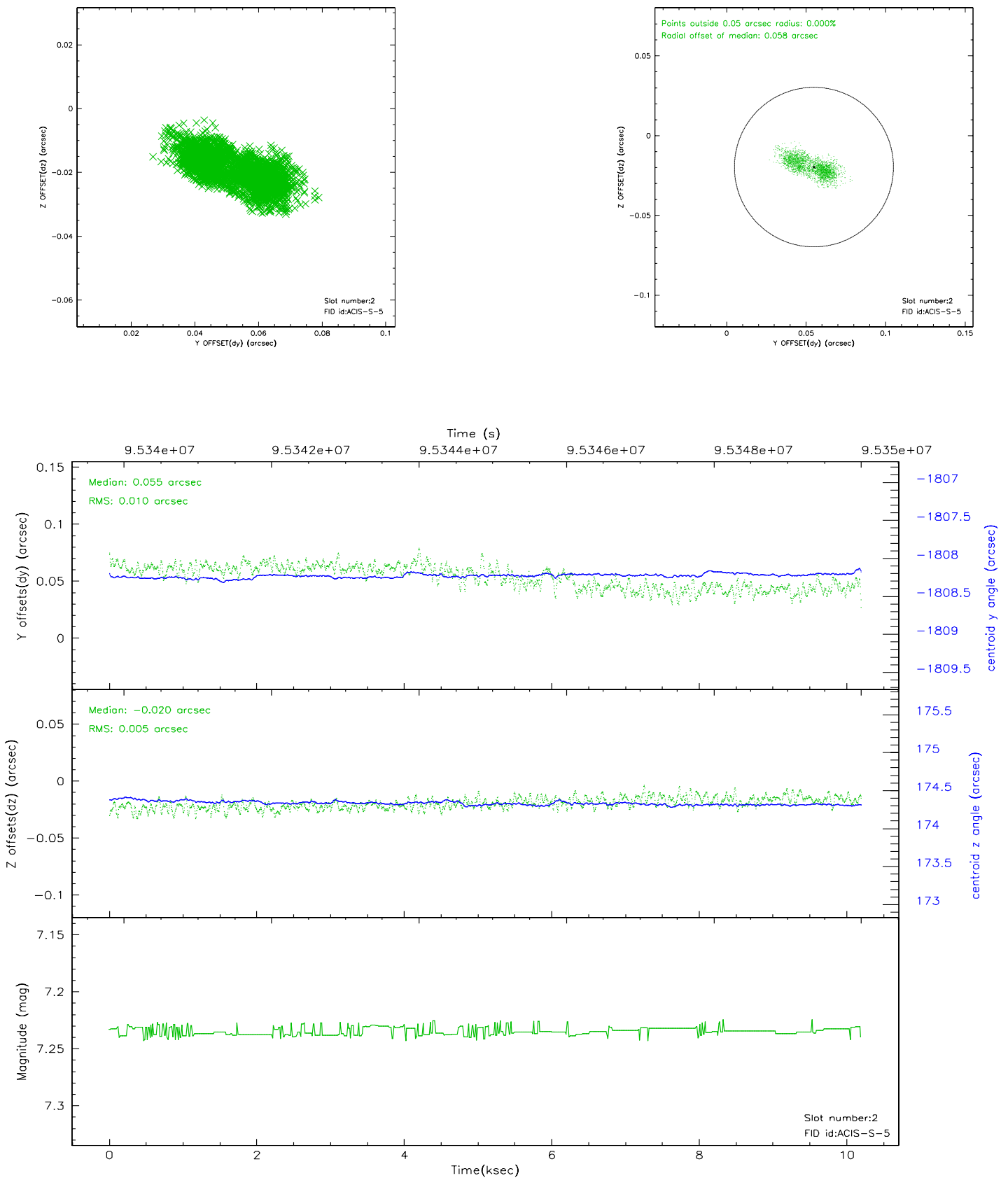
2.5.1 Slot 0



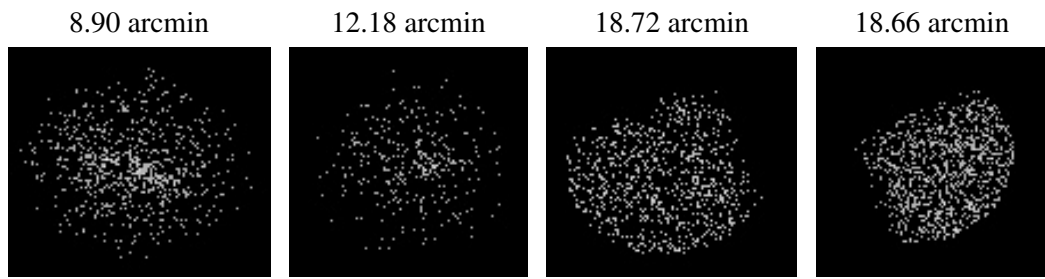
2.5.2 Slot 1



2.5.3 Slot 2



3 Point Sources



A Summary

A.1 Status

V&V Scientist	Jen Lauer
V&V Date (YYYY-MM-DD)	2006.11.02
V&V Edition	1
V&V Disposition and Status	OK
V&V Charge Time	9.76

A.2 Comments