

V&V Reference Report

L2 ASCDS Version : 7.6.9

Observation 2021 - L2 Version 001
Chandra X-Ray Center

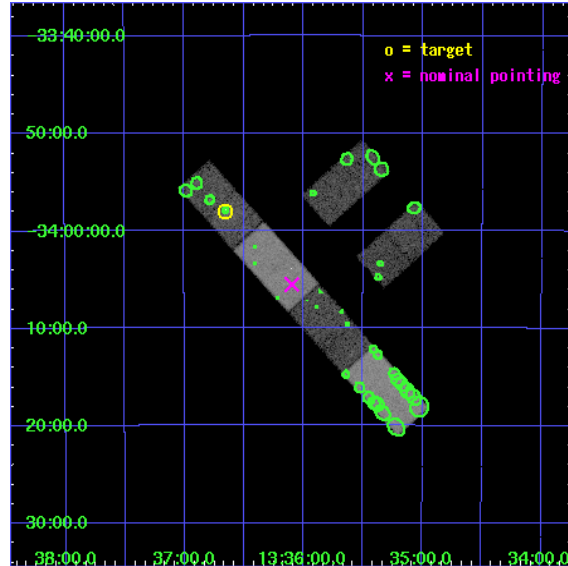
L2 Processing Date : Dec 31 2006

Contents

1	Front	2
2	OBI	3
2.1	OBI	3
2.1.1	Images	3
2.1.2	Bias	3
2.1.3	Parameters	4
2.1.4	Events	4
2.2	Compared Parameters	5
2.3	Aspect	6
2.4	Star Slots	9
2.4.1	Slot 3	9
2.4.2	Slot 4	10
2.4.3	Slot 5	11
2.4.4	Slot 6	12
2.4.5	Slot 7	13
2.5	FID Slots	14
2.5.1	Slot 0	14
2.5.2	Slot 1	15
2.5.3	Slot 2	16
3	Point Sources	17
A	Summary	18
A.1	Status	18
A.2	Comments	18

1 Front

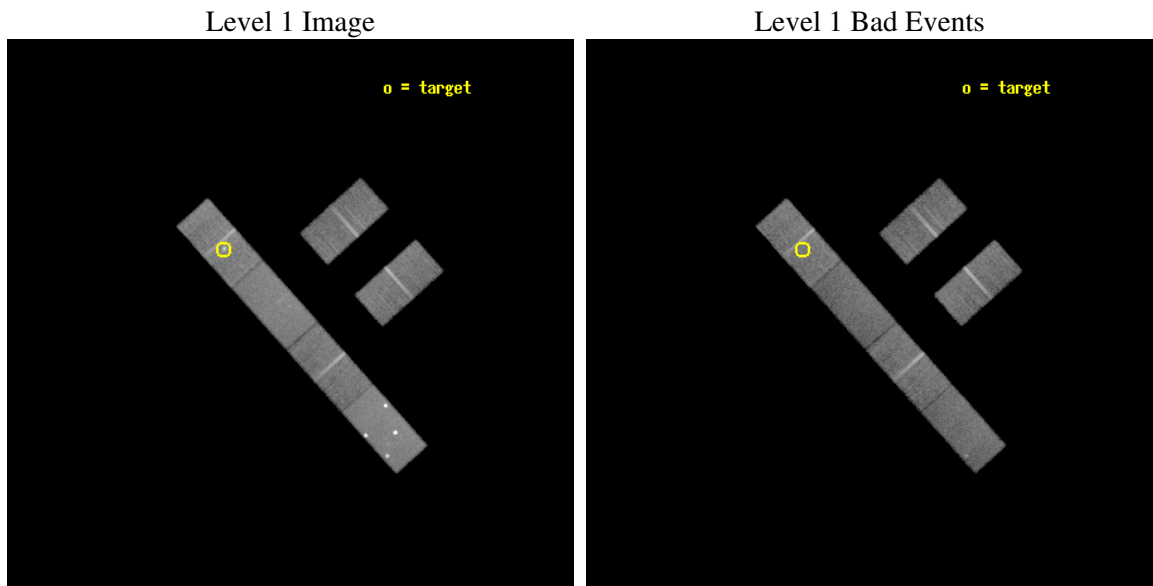
seq_num	600155
obs_id	2021
title	ORIGIN OF THE HARD EMISSION IN THE OPTICALLY INACTIVE E GALAXY IC4296 FROM HIGH RESOLUTION X-RAY AND RADIO OBSERVATIONS
observer	DR. SILVIA PELLEGRINI
object	IC4296
dtcycle	0
cycle	P
ra_targ	204.164042
dec_targ	-33.966528
ra_nom	204.02437557367
dec_nom	-34.092070779903
roll_nom	228.01791470118
revision	2
ontime	24224.399959892
livetime	23684.395737087
ontime2	24223.720821261
ontime3	24224.399959892
ontime5	24223.802901268
ontime6	24223.843941256
ontime7	24223.761861265
ontime8	24224.399959892
l2events	132620



2 OBI

2.1 OBI

2.1.1 Images

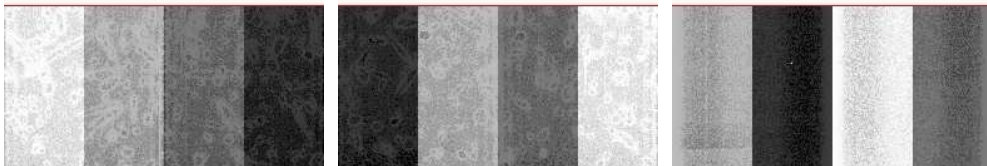


2.1.2 Bias

Chip 2

Chip 3

Chip 5



Chip 6

Chip 7

Chip 8



2.1.3 Parameters

obi_num	0
ascdsver	7.6.9
caldsver	3.2.4
date	2006-12-31T06:50:47
revision	2

sched_exp_time	24000.000000
ontime	24393.456874102
ontime2	24391.615864009
ontime3	24393.456874102
ontime5	24391.615864009
ontime6	24391.615864009
ontime7	24391.615864009
ontime8	24393.456874102
l1events	632235

2.1.4 Events

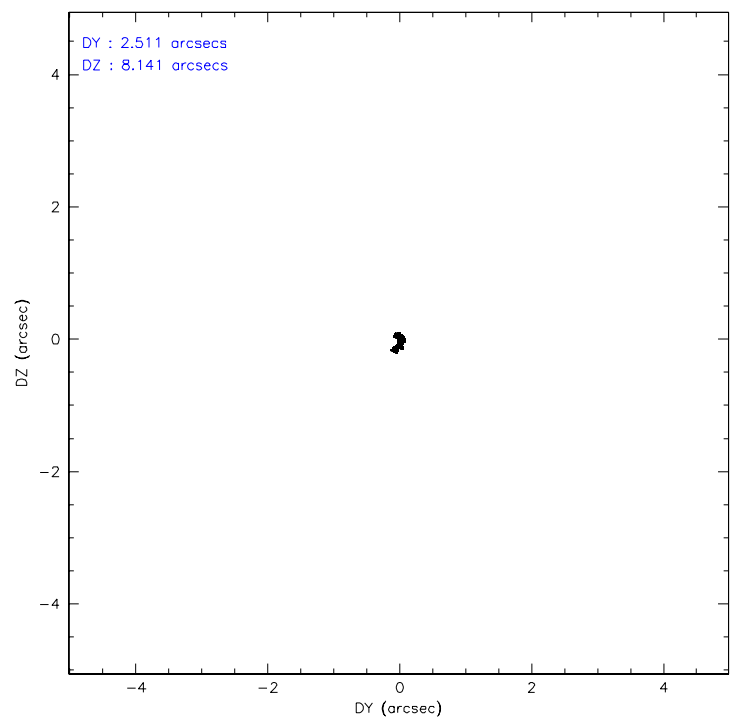
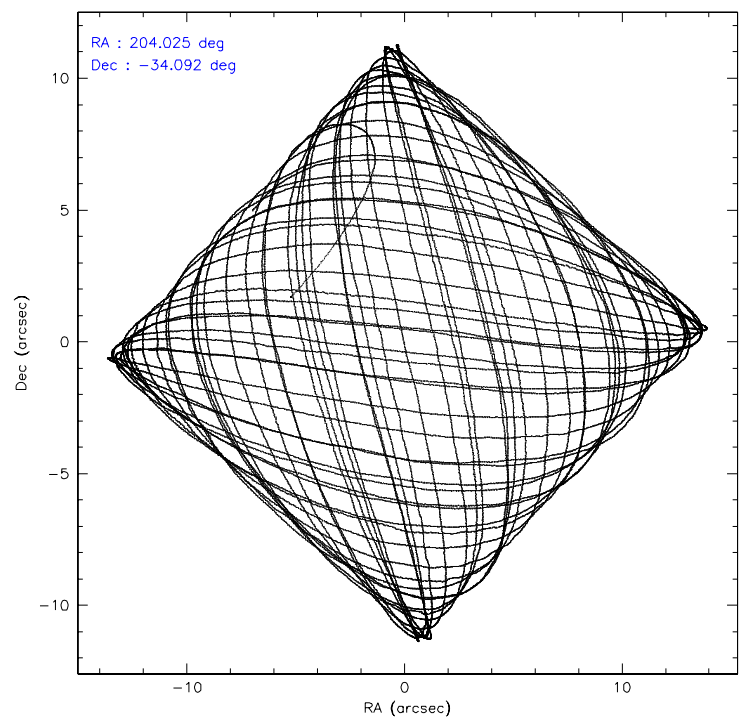
	ccd 2	ccd 3	ccd 5	ccd 6	ccd 7	ccd 8
level 1 events	92748	84391	139886	90619	108198	116393
rejected events	82730	74463	64733	79749	63744	90131
rejected %	89%	88%	46%	88%	58%	77%

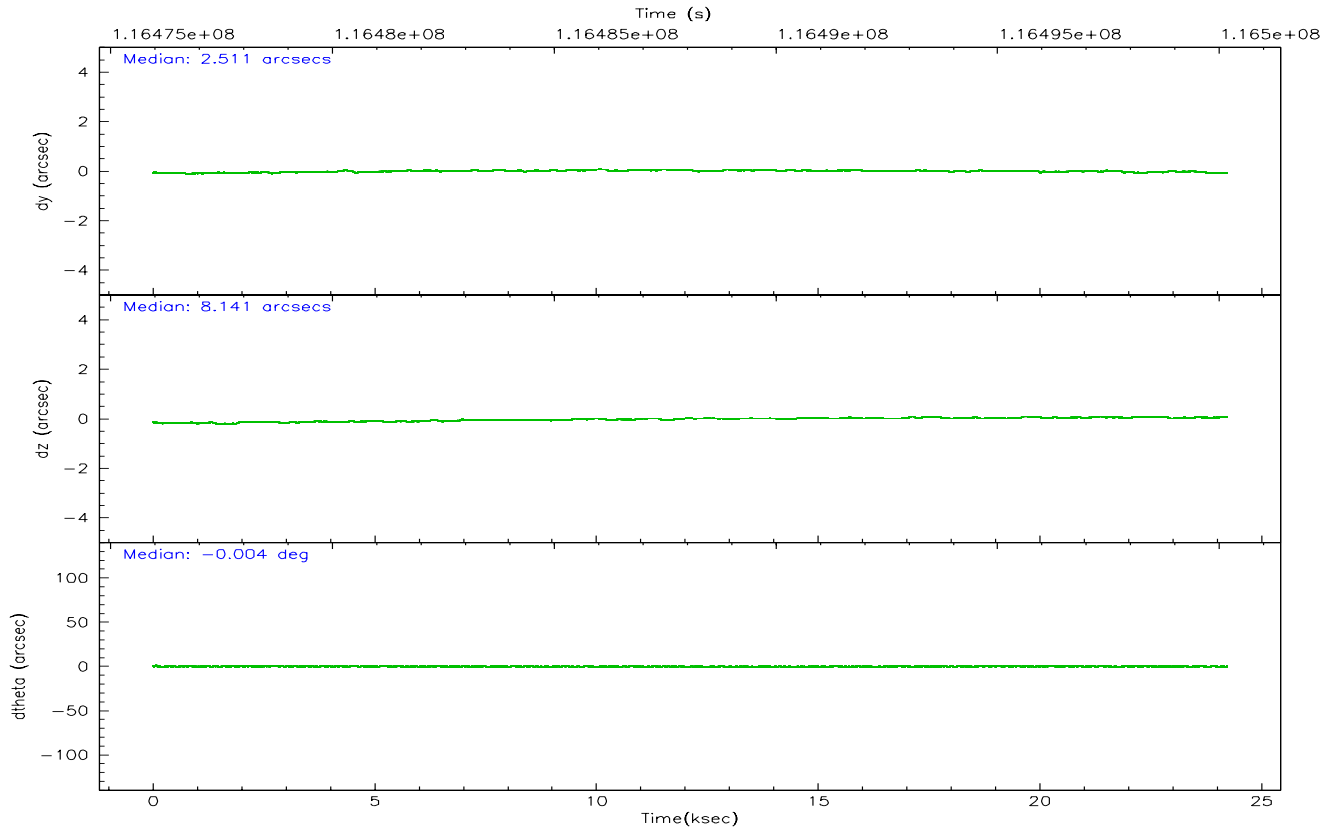
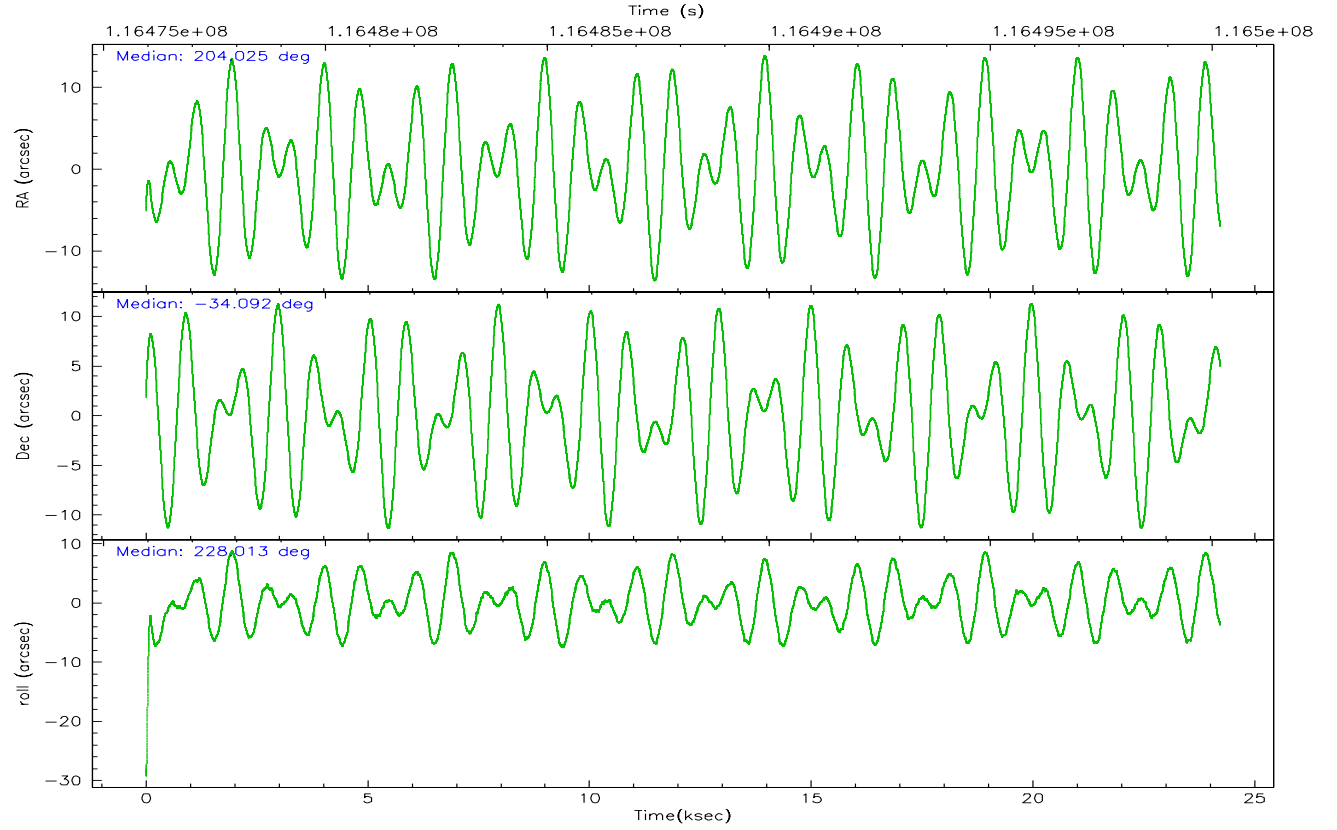
	ccd 2	ccd 3	ccd 5	ccd 6	ccd 7	ccd 8
grade 0 events	4277	4409	25840	4590	3936	10853
	4%	5%	18%	5%	3%	9%
grade 1 events	43	29	113	37	56	56
	0%	0%	0%	0%	0%	0%
grade 2 events	2053	1758	18023	2044	11231	5076
	2%	2%	12%	2%	10%	4%
grade 3 events	1064	1131	1659	1199	3120	2549
	1%	1%	1%	1%	2%	2%
grade 4 events	1083	1094	1477	1205	2926	2370
	1%	1%	1%	1%	2%	2%
grade 5 events	2908	3108	5880	3381	7577	4286
	3%	3%	4%	3%	7%	3%
grade 6 events	1609	1597	28685	1895	23538	5646
	1%	1%	20%	2%	21%	4%
grade 7 events	79711	71265	58209	76268	55814	85557
	85%	84%	41%	84%	51%	73%

2.2 Compared Parameters

Parameter	Planned	Actual	Parameter	Planned	Actual
Instrument	ACIS	ACIS	Obspar format version number	6	6
Detector	ACIS-235678	ACIS-235678	Obspar file type	PREDICTED	ACTUAL
Grating	NONE	NONE	Obspar update status	NONE	UPDATED
Data mode	FAINT	FAINT	Number of optional ACIS chips dropped	0	0
Observation mode	POINTING	POINTING	On-chip summing requested	N	N
Pointing RA	204.030863	204.0243755736671	Subarray requested	1/2	1/2
Pointing Dec	-34.065350	-34.0920707799033	Subarray start row	0	257
Pointing Roll	227.864940	228.0179147011831	Subarray row count	1024	512
SIM focus pos (mm)	-0.684267	-0.6828225247311905	Alternating exposures requested	N	N
SIM defocus (mm)	0	0.001444936568705701	Primary exposure time	0.000000	1.8
SIM translation stage pos (mm)	-190.132523	-190.1400660498719			
SIM translation stage offset (mm)	0	0.00754346686406393			
Observation start time	116476176.184000	116475181.09819			
Observation start date	2001-09-10T02:28:32	2001-09-10T02:13:01			
Observation end time	116500176.184000	116500721.5367			
Observation end date	2001-09-10T09:08:32	2001-09-10T09:18:41			
Read mode	TIMED	TIMED			

2.3 Aspect



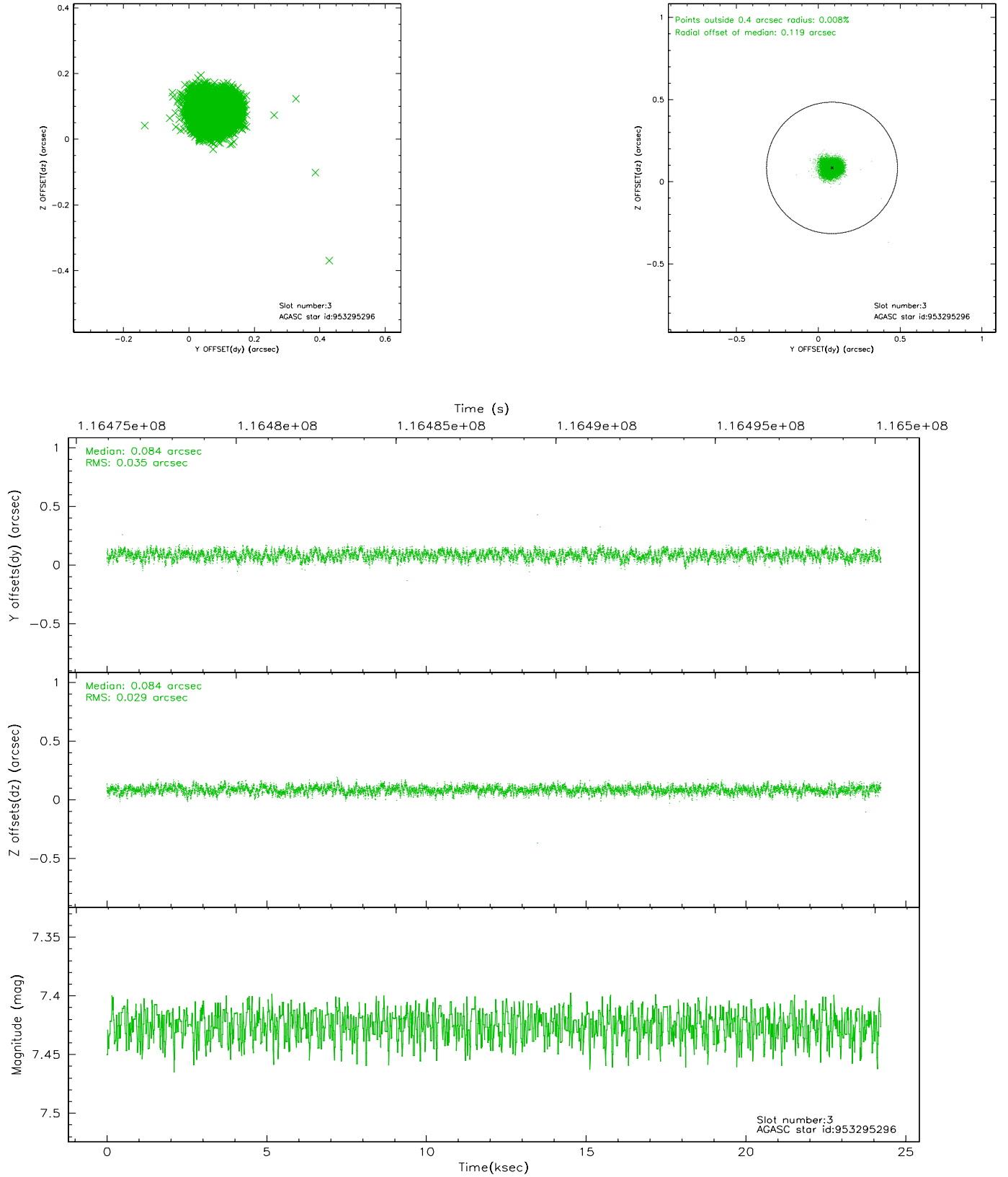


Slot Statistics

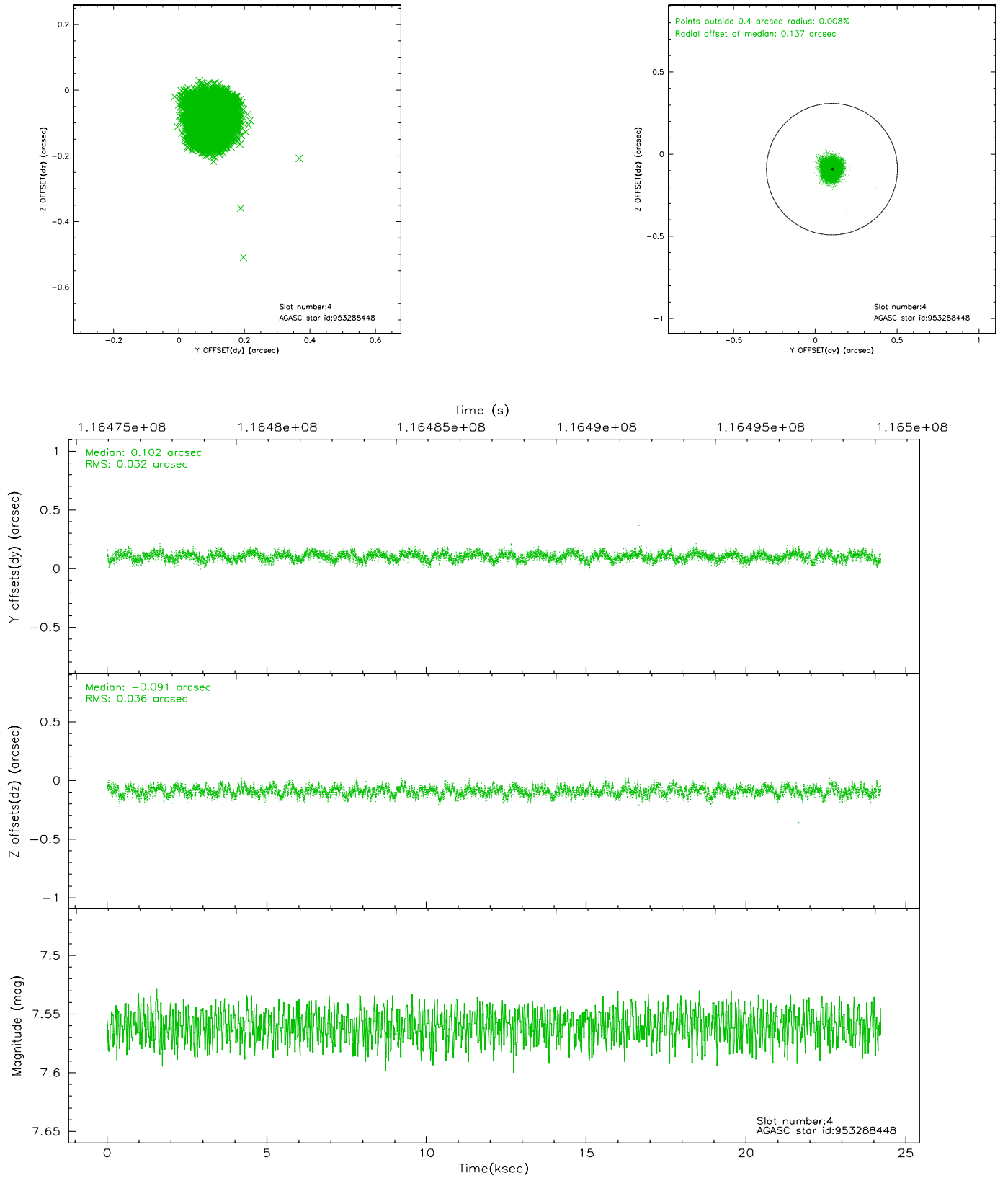
slot	status	id	mag	n_pts	med_dy	med_dz	dr1	dr2	ra	dec	mean_y	mean_z
0	FID	ACIS-S-2	7.11	5909	0.007	0.014	0.007	0.012	0.000000	0.000000	-755.13	-1729.30
1	FID	ACIS-S-4	7.19	5909	-0.093	-0.007	0.005	0.009	0.000000	0.000000	2157.99	179.02
2	FID	ACIS-S-5	7.24	5909	0.055	0.002	0.006	0.011	0.000000	0.000000	-1807.76	172.86
3	GUIDE	953295296	7.42	11819	0.084	0.084	0.048	0.076	203.563852	-34.387568	1794.89	-247.98
4	GUIDE	953288448	7.56	11817	0.102	-0.091	0.052	0.081	203.869544	-34.017546	197.32	-471.95
5	GUIDE	953288640	7.64	11818	-0.020	-0.041	0.054	0.085	203.543121	-34.069013	989.73	-1067.18
6	GUIDE	952779024	8.62	11818	-0.175	-0.090	0.058	0.092	204.034661	-33.479119	-1571.24	-1407.43
7	GUIDE	953296432	9.00	11813	0.010	0.139	0.071	0.114	204.411860	-34.306423	-113.68	1424.10

2.4 Star Slots

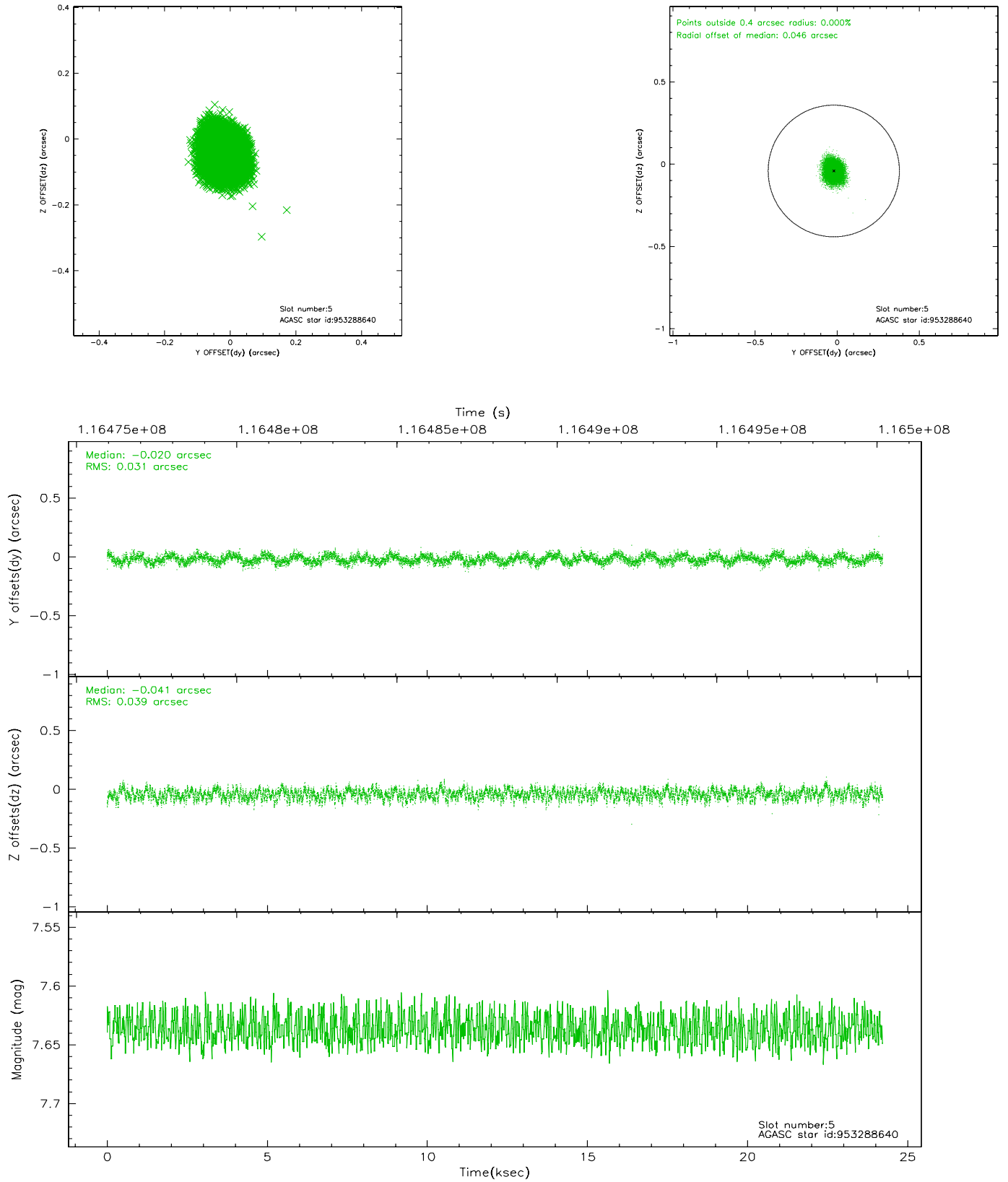
2.4.1 Slot 3



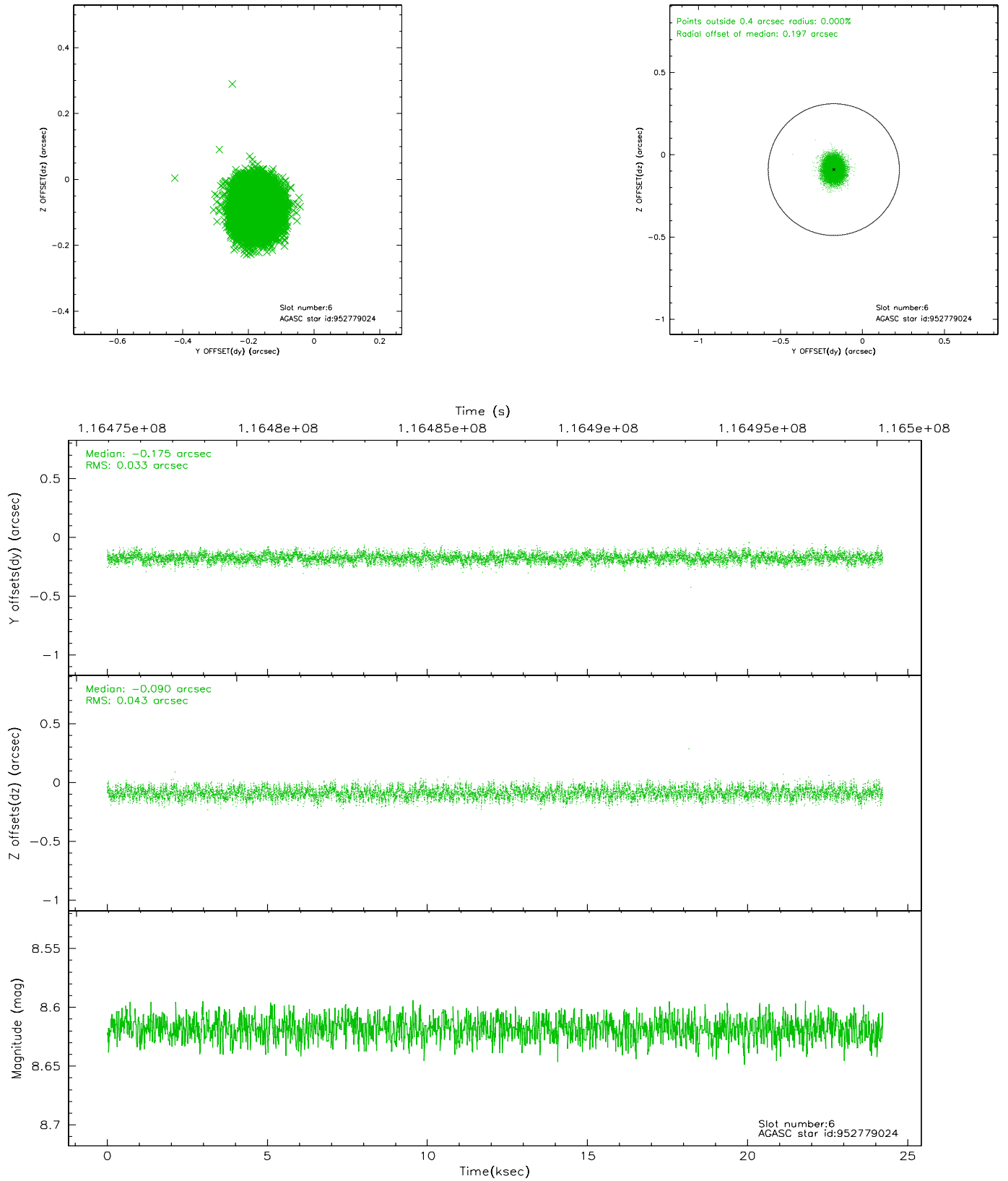
2.4.2 Slot 4



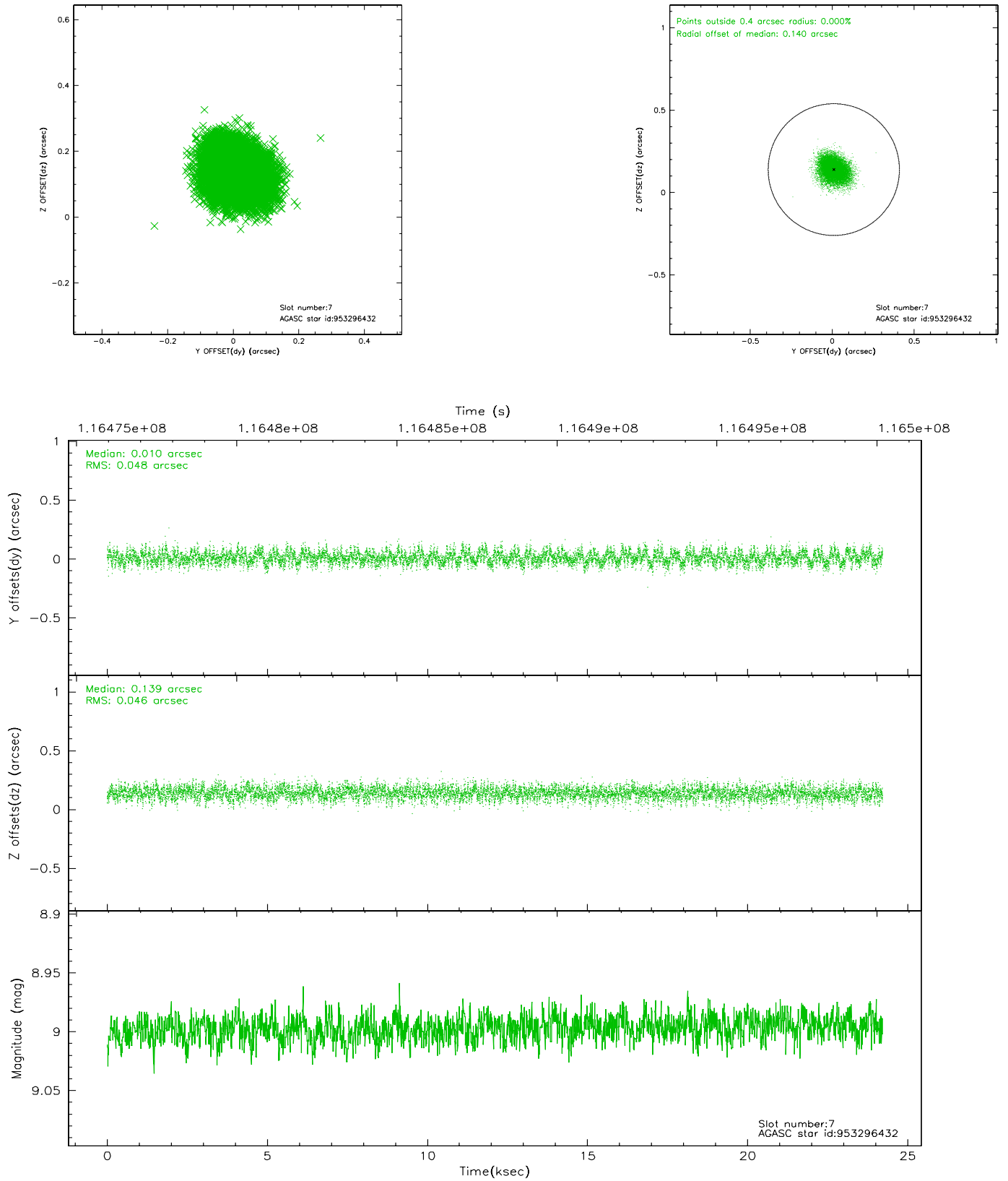
2.4.3 Slot 5



2.4.4 Slot 6

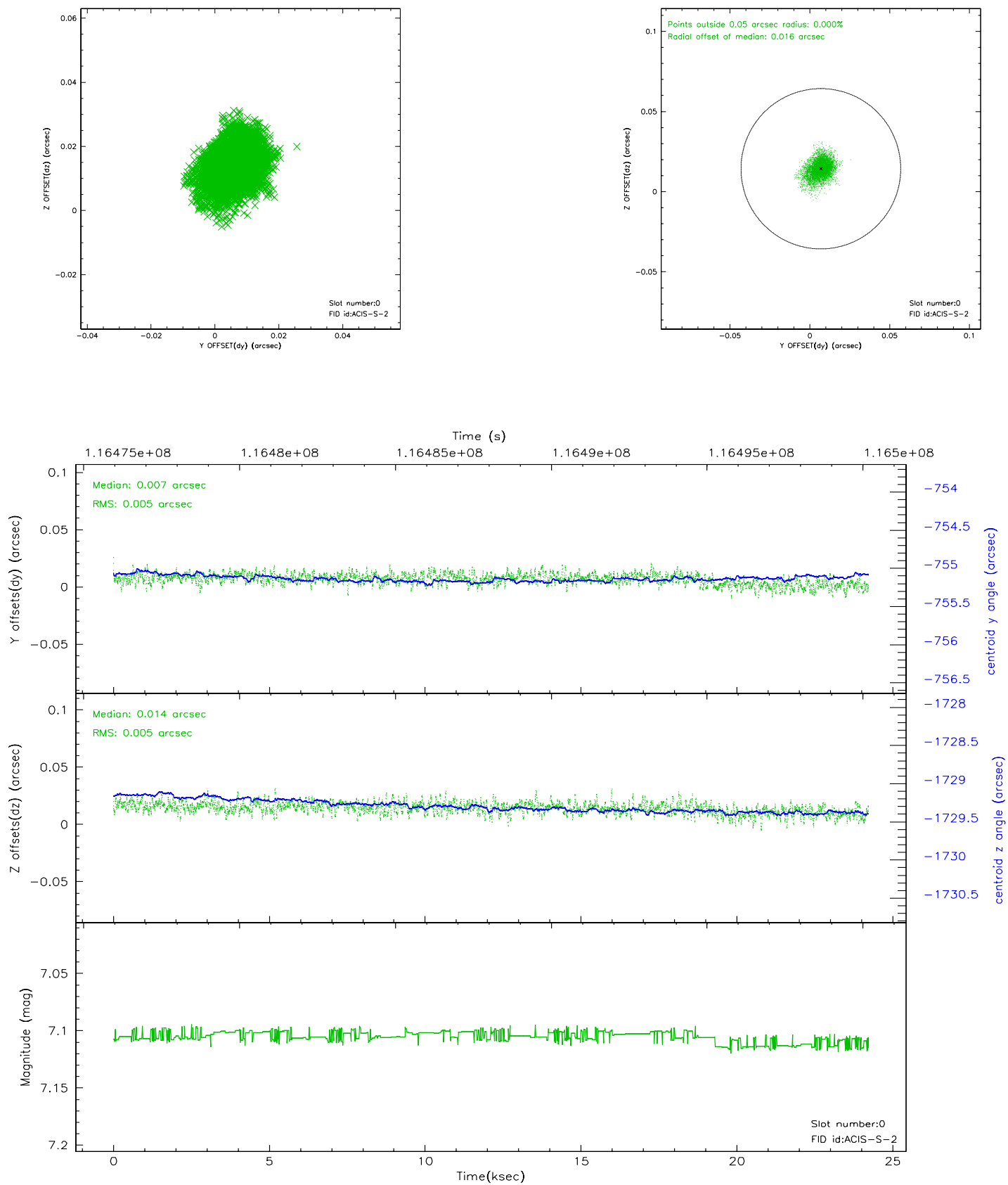


2.4.5 Slot 7

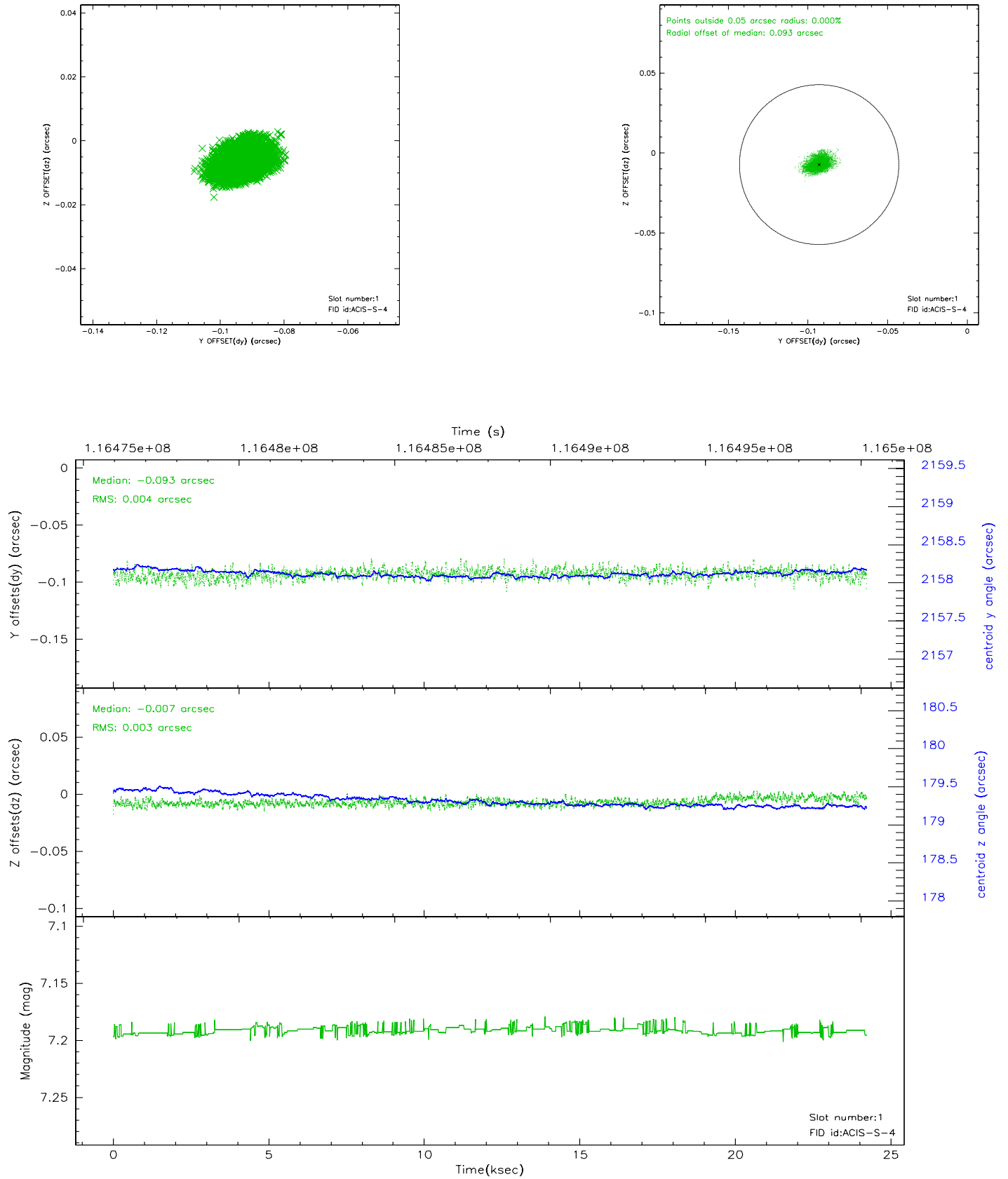


2.5 FID Slots

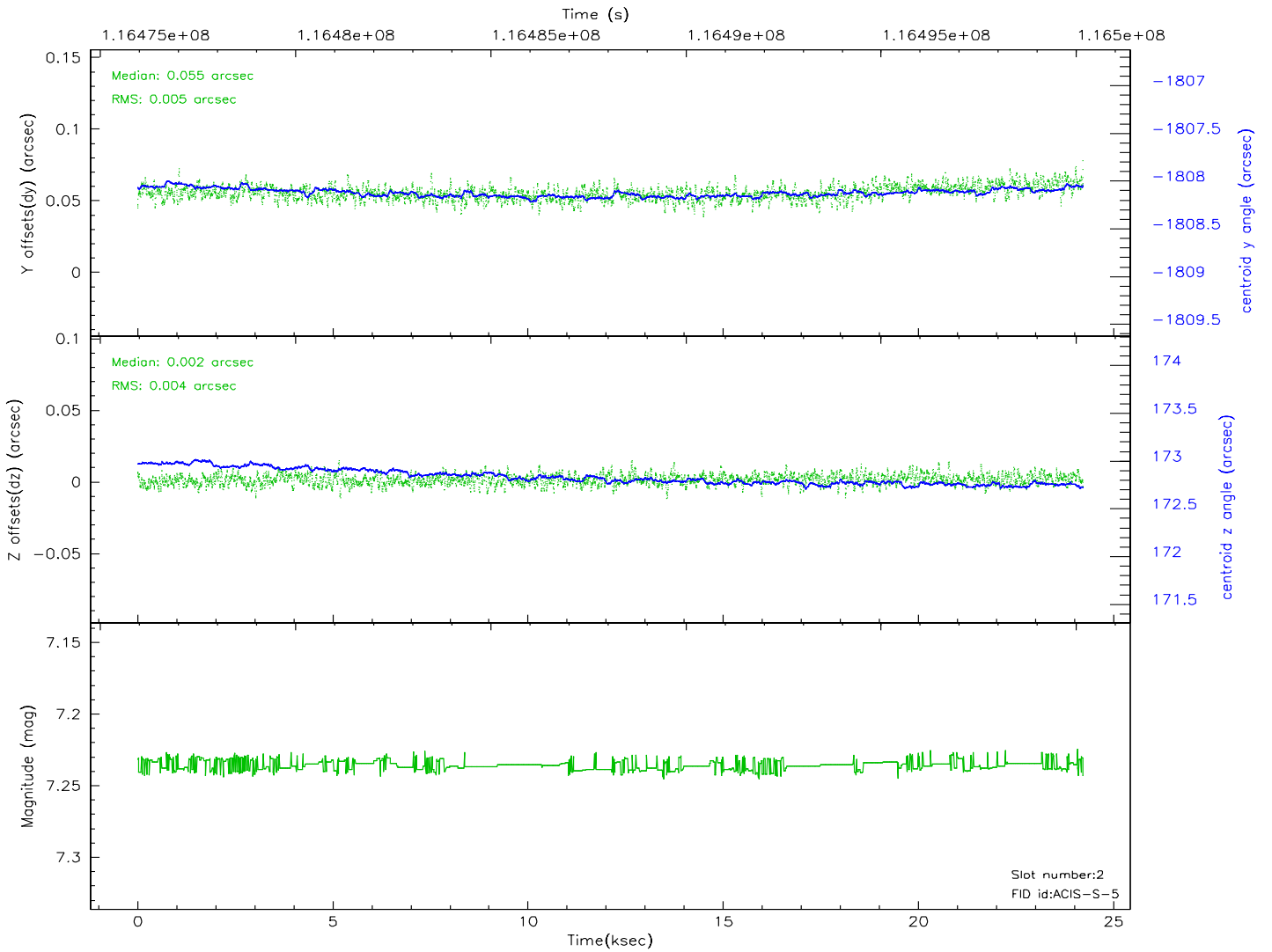
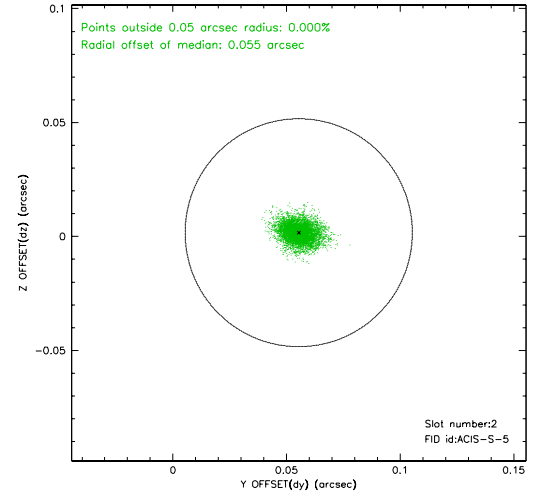
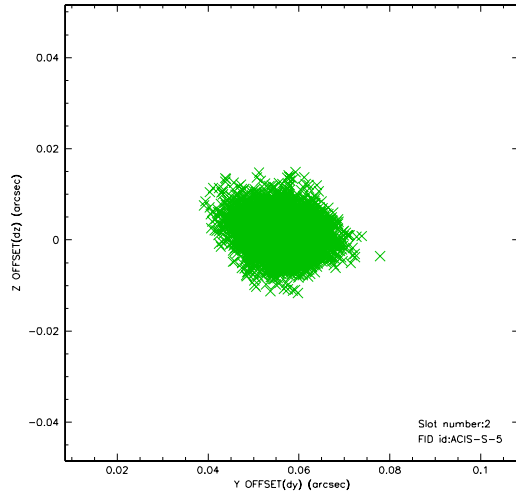
2.5.1 Slot 0



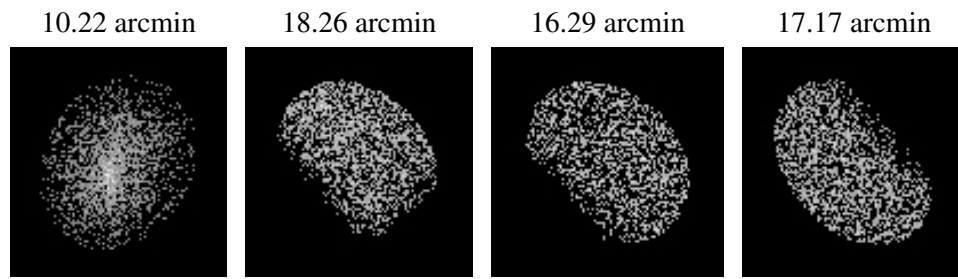
2.5.2 Slot 1



2.5.3 Slot 2



3 Point Sources



A Summary

A.1 Status

V&V Scientist	Beth Sundheim
V&V Date (YYYY-MM-DD)	2007.01.04
V&V Edition	1
V&V Disposition and Status	OK
V&V Charge Time	24.224

A.2 Comments