

V&V Reference Report

L2 ASCDS Version : 7.6.9

Observation 1991 - L2 Version 001
Chandra X-Ray Center

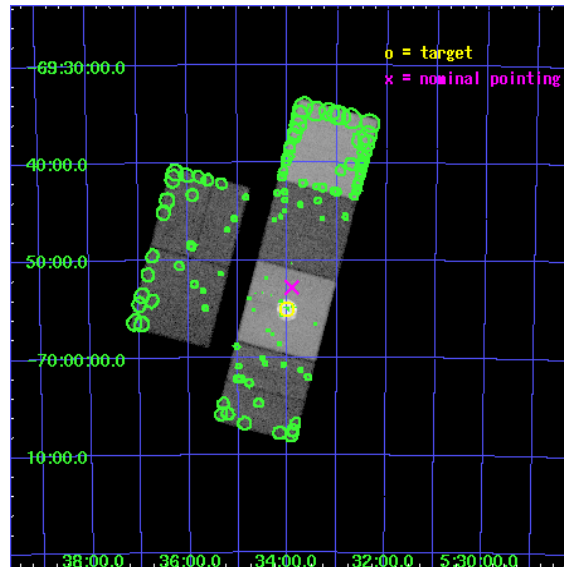
L2 Processing Date : Dec 30 2006

Contents

1	Front	2
2	OBI	3
2.1	OBI	3
2.1.1	Images	3
2.1.2	Bias	3
2.1.3	Parameters	4
2.1.4	Events	4
2.2	Compared Parameters	5
2.3	Aspect	6
2.4	Star Slots	9
2.4.1	Slot 3	9
2.4.2	Slot 4	10
2.4.3	Slot 5	11
2.4.4	Slot 6	12
2.4.5	Slot 7	13
2.5	FID Slots	14
2.5.1	Slot 0	14
2.5.2	Slot 1	15
2.5.3	Slot 2	16
3	Point Sources	17
A	Summary	18
A.1	Status	18
A.2	Comments	18

1 Front

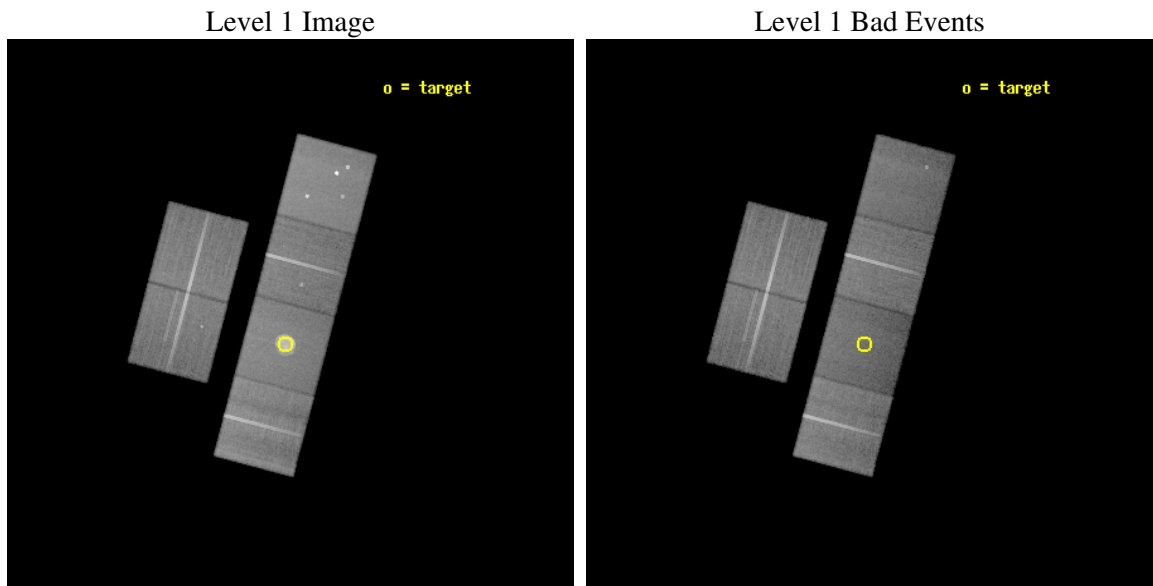
seq_num	500168
obs_id	1991
title	MATURE SUPERNOVA REMNANTS IN THE LARGE MAGELLANIC CLOUD
observer	Dr Kazimierz Borkowski
object	0534-69.9
dtcycle	0
cycle	P
ra_targ	83.5
dec_targ	-69.916667
ra_nom	83.477261935201
dec_nom	-69.880026013861
roll_nom	104.79249856732
revision	2
ontime	60214.400056079
livetime	59451.92906581
ontime2	60207.918135568
ontime3	60207.918135583
ontime5	60214.400056079
ontime6	60207.918105662
ontime7	60214.400056079
ontime8	60214.400056079
l2events	512910



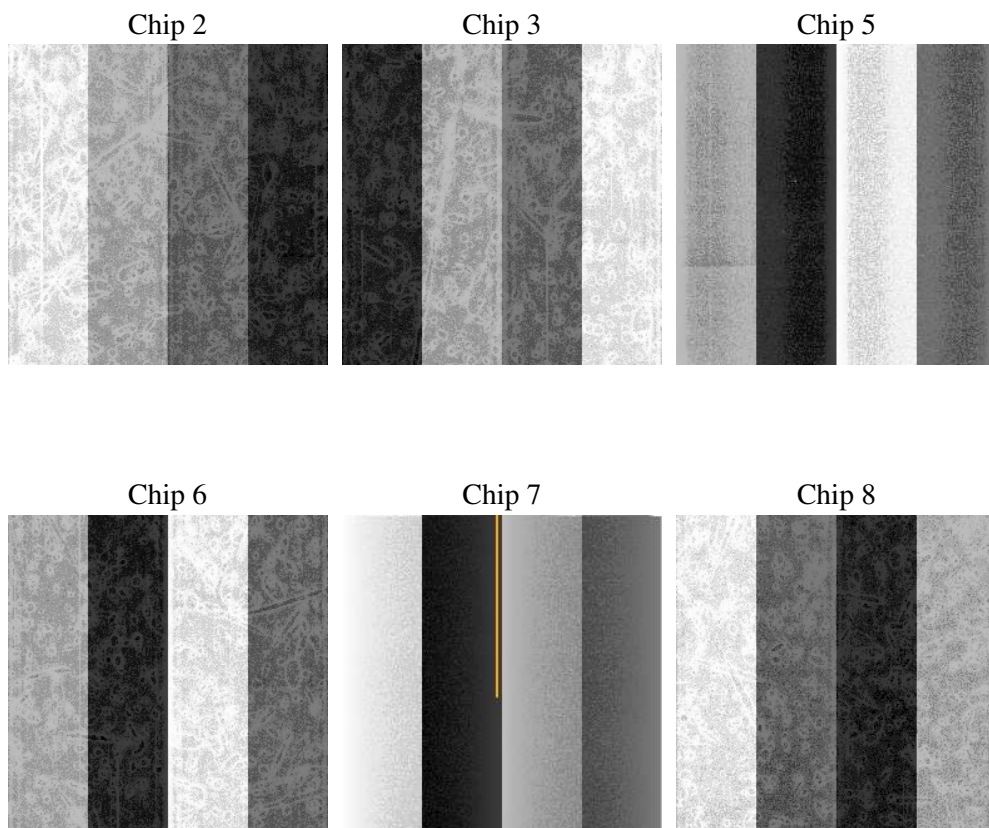
2 OBI

2.1 OBI

2.1.1 Images



2.1.2 Bias



2.1.3 Parameters

obi_num	0
ascdsver	7.6.9
caldsver	3.2.4
date	2006-12-31T00:40:58
revision	2

sched_exp_time	60265.000000
ontime	60220.997589737
ontime2	60214.515669227
ontime3	60214.515669242
ontime5	60220.997589737
ontime6	60214.51563932
ontime7	60220.997589737
ontime8	60220.997589737
l1events	2141622

2.1.4 Events

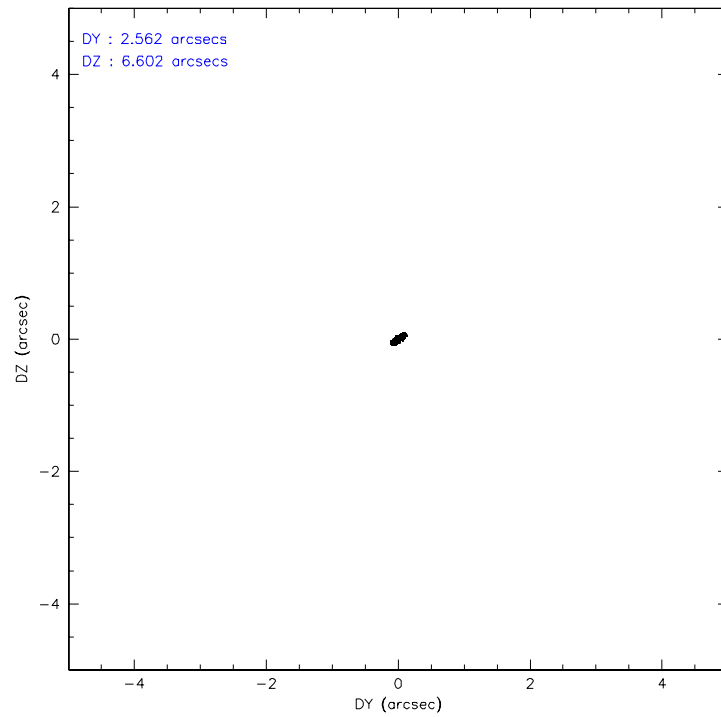
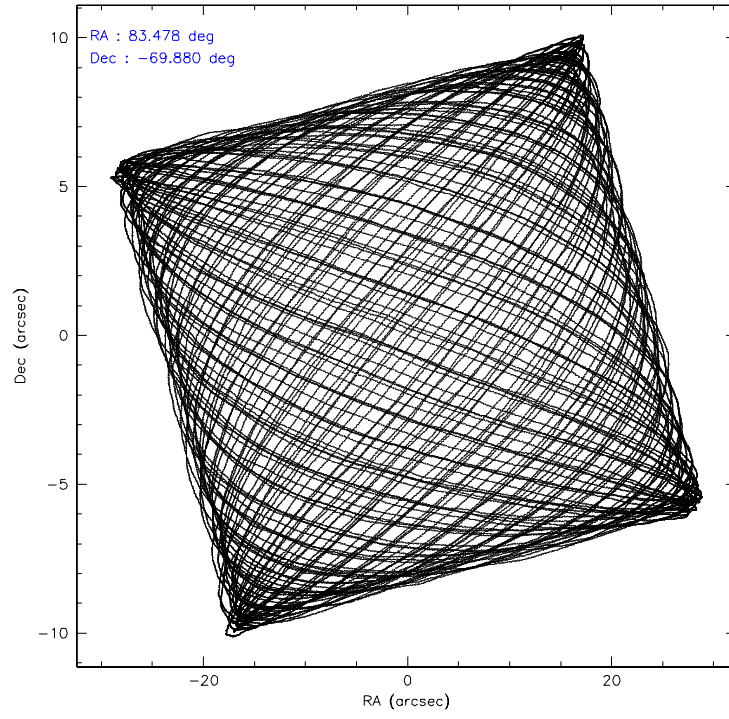
	ccd 2	ccd 3	ccd 5	ccd 6	ccd 7	ccd 8
level 1 events	334166	304780	415248	317929	388417	381082
rejected events	296741	274001	202493	277329	185301	298031
rejected %	88%	89%	48%	87%	47%	78%

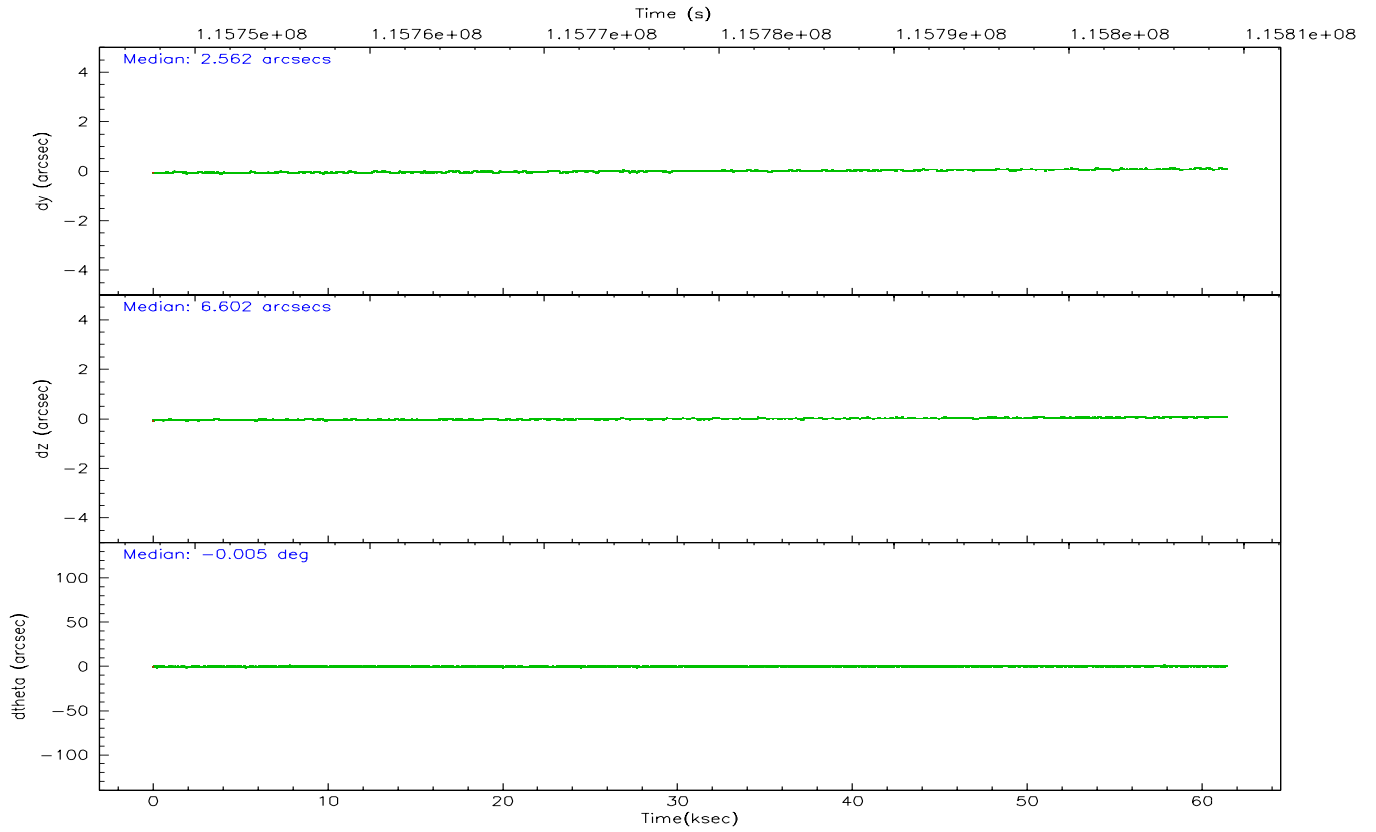
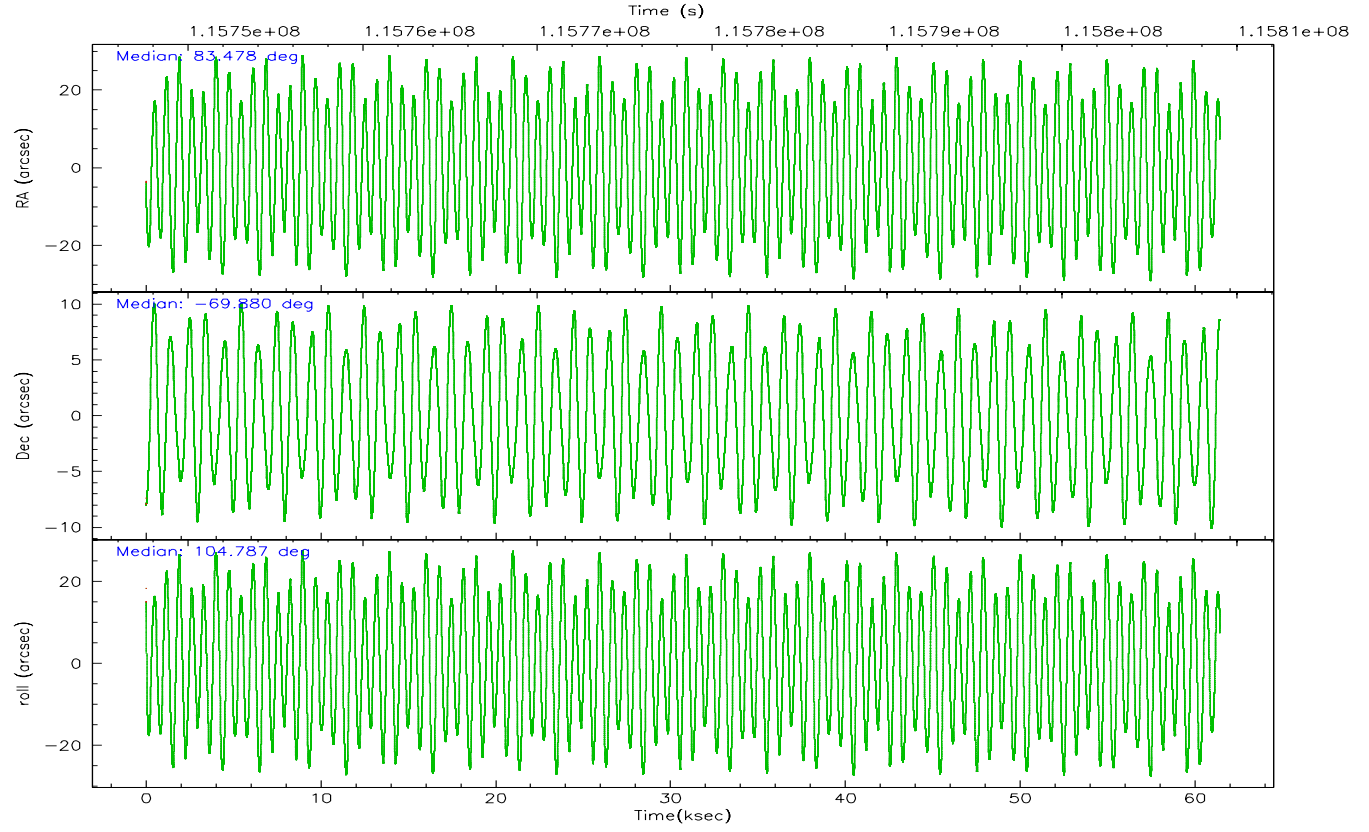
	ccd 2	ccd 3	ccd 5	ccd 6	ccd 7	ccd 8
grade 0 events	18030	12946	32296	20088	32856	27046
	5%	4%	7%	6%	8%	7%
grade 1 events	151	144	119	169	155	233
	0%	0%	0%	0%	0%	0%
grade 2 events	7210	6049	62892	6785	52151	17366
	2%	1%	15%	2%	13%	4%
grade 3 events	3255	3297	6454	3604	15932	9060
	0%	1%	1%	1%	4%	2%
grade 4 events	3292	3219	5970	3622	15765	8244
	0%	1%	1%	1%	4%	2%
grade 5 events	9354	10487	20988	11364	25325	15545
	2%	3%	5%	3%	6%	4%
grade 6 events	5640	5274	105167	6504	86440	21351
	1%	1%	25%	2%	22%	5%
grade 7 events	287234	263364	181362	265793	159793	282237
	85%	86%	43%	83%	41%	74%

2.2 Compared Parameters

Parameter	Planned	Actual	Parameter	Planned	Actual
Instrument	ACIS	ACIS	Obspar format version number	6	6
Detector	ACIS-235678	ACIS-235678	Obspar file type	PREDICTED	ACTUAL
Grating	NONE	NONE	Obspar update status	NONE	UPDATED
Data mode	VFAINT	VFAINT	Number of optional ACIS chips dropped	0	0
Observation mode	POINTING	POINTING	On-chip summing requested	N	N
Pointing RA	83.533791	83.47726193520143	Subarray requested	NONE	NONE
Pointing Dec	-69.899173	-69.88002601386079	Alternating exposures requested	N	N
Pointing Roll	104.688949	104.7924985673237	Primary exposure time	0.000000	3.2
SIM focus pos (mm)	-0.684267	-0.6828225247311905			
SIM defocus (mm)	0	0.001444936568705701			
SIM translation stage pos (mm)	-190.132523	-190.1425803651734			
SIM translation stage offset (mm)	0	0.01005778216563158			
Observation start time	115748786.184000	115747329.08193			
Observation start date	2001-09-01T16:25:22	2001-09-01T16:02:09			
Observation end time	115809051.184000	115809462.53439			
Observation end date	2001-09-02T09:09:47	2001-09-02T09:17:42			
Read mode	TIMED	TIMED			

2.3 Aspect



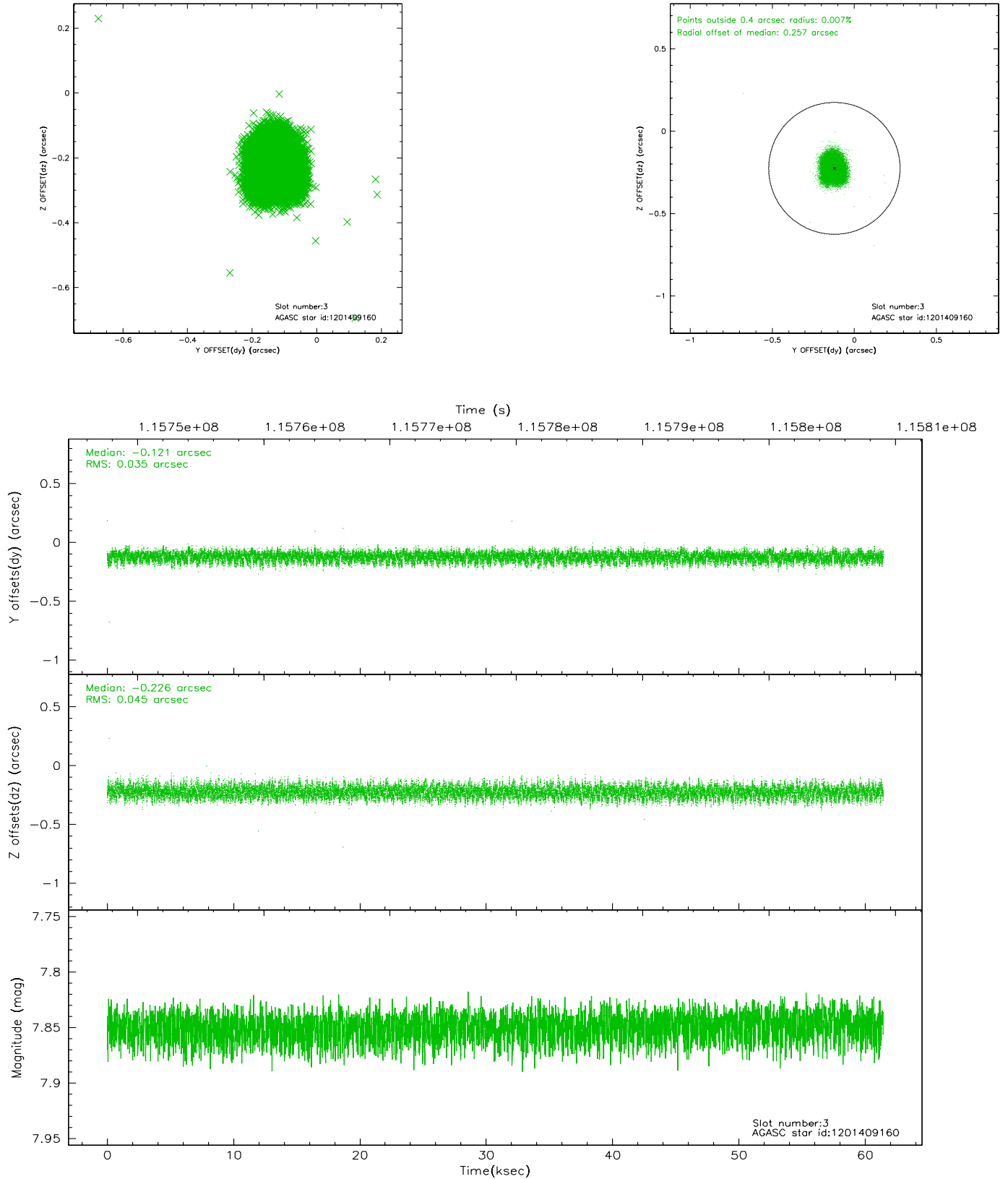


Slot Statistics

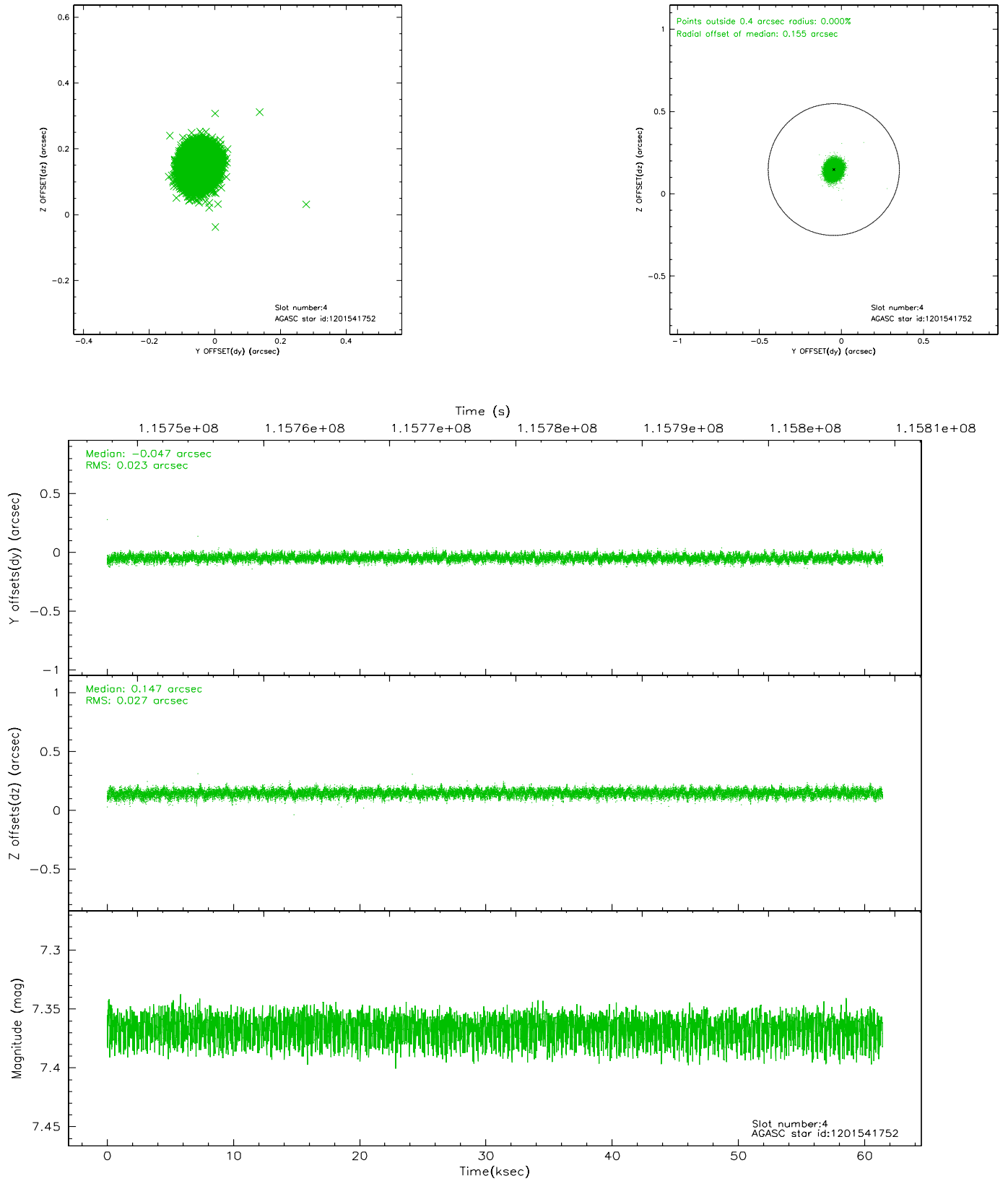
slot	status	id	mag	n_pts	med_dy	med_dz	dr1	dr2	ra	dec	mean_y	mean_z
0	FID	ACIS-S-2	7.11	14985	-0.007	0.039	0.007	0.011	0.000000	0.000000	-755.18	-1727.68
1	FID	ACIS-S-4	7.20	14986	-0.099	-0.007	0.005	0.010	0.000000	0.000000	2158.00	180.84
2	FID	ACIS-S-5	7.23	14987	0.075	-0.023	0.007	0.011	0.000000	0.000000	-1808.02	174.40
3	GUIDE	1201409160	7.85	29972	-0.121	-0.226	0.061	0.097	81.660661	-70.063595	-23.86	2382.95
4	GUIDE	1201541752	7.37	29974	-0.047	0.147	0.037	0.061	85.373891	-70.033762	-1074.83	-2055.80
5	GUIDE	1201411288	9.26	29956	0.017	0.013	0.088	0.146	81.410076	-69.595403	1688.87	2312.87
6	GUIDE	1201542672	8.19	29971	0.050	-0.013	0.075	0.115	84.492488	-69.957531	-511.45	-1088.32
7	GUIDE	1201540760	8.54	29968	0.111	0.081	0.063	0.101	84.403691	-70.419249	-2084.07	-538.44

2.4 Star Slots

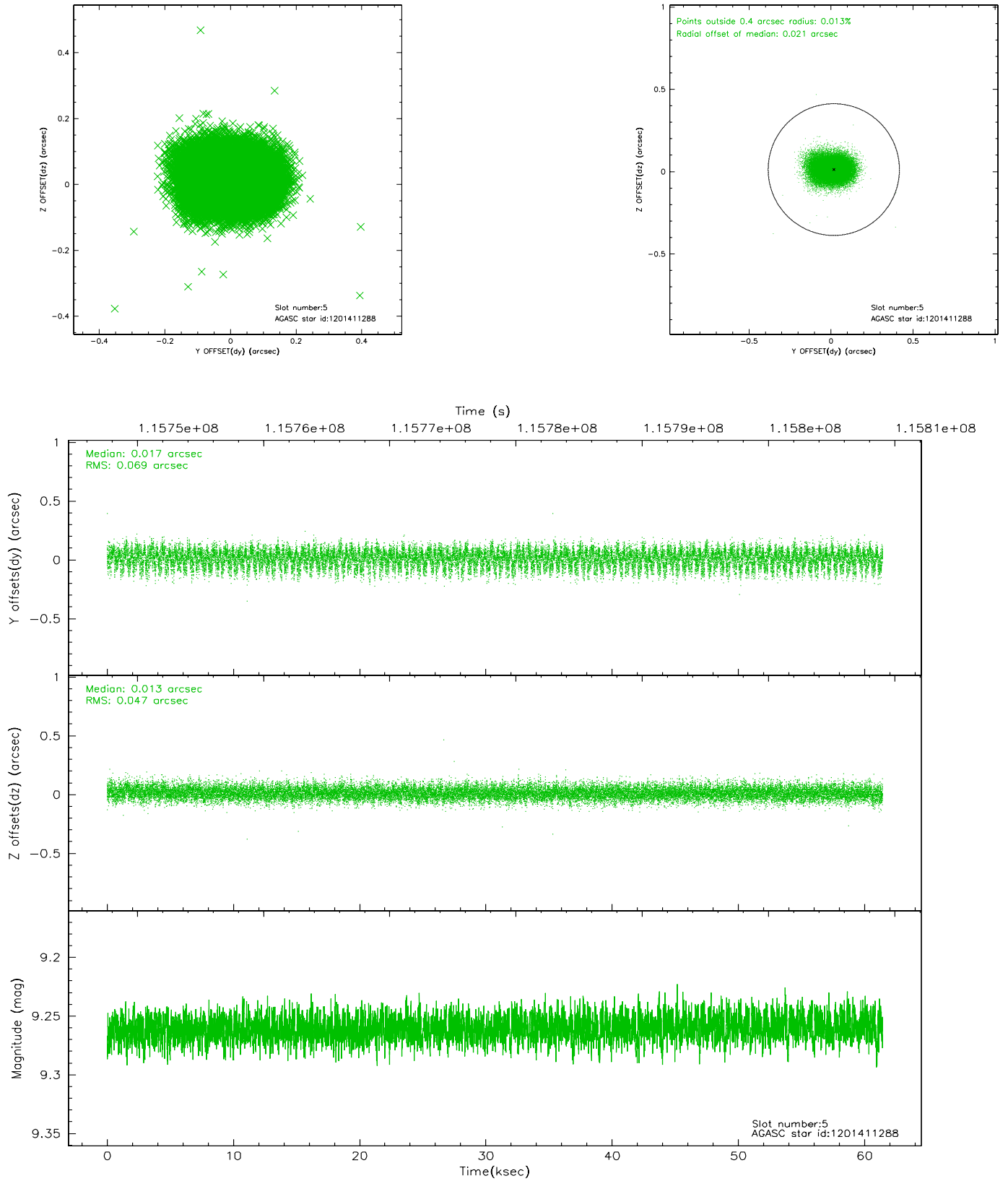
2.4.1 Slot 3



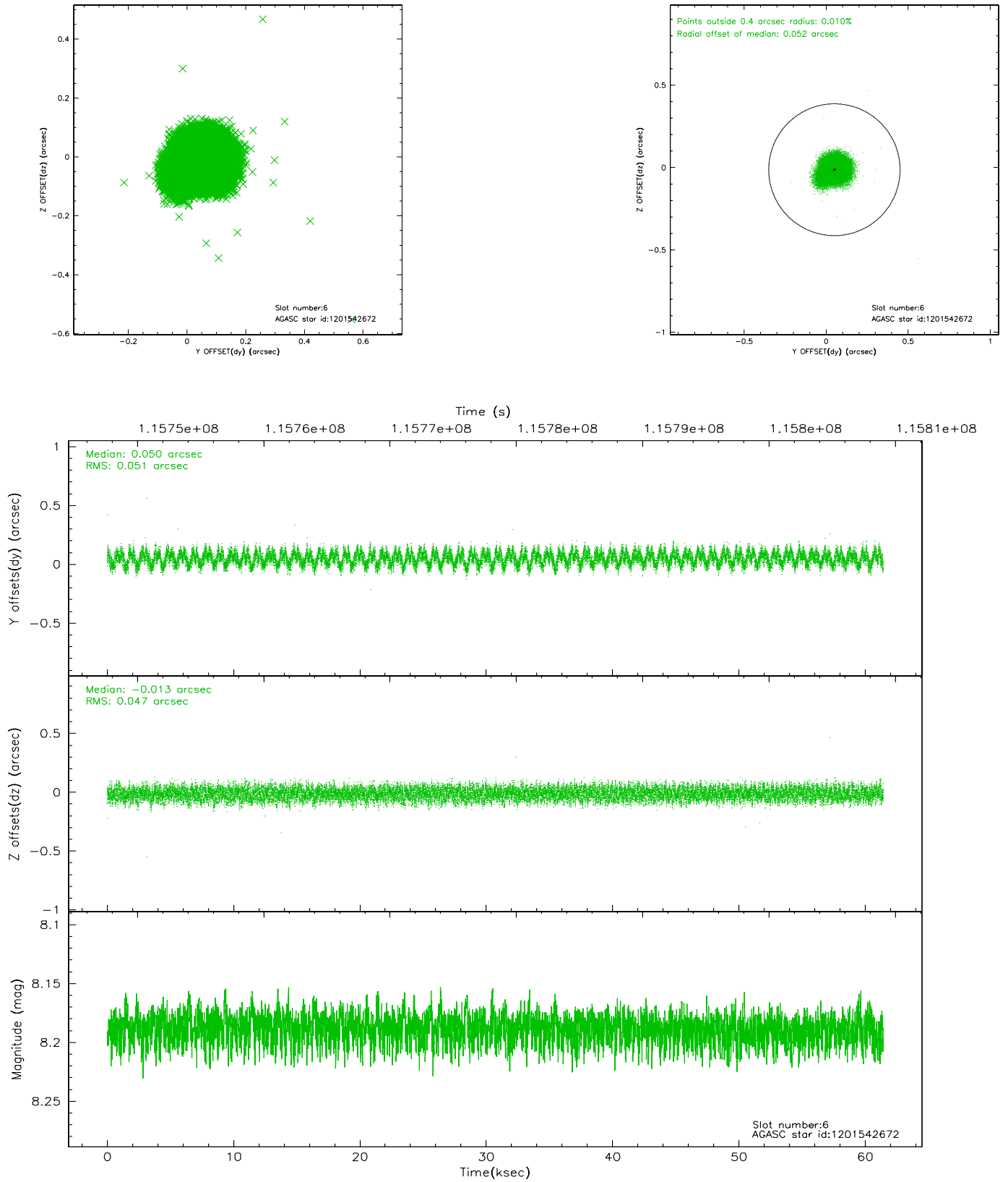
2.4.2 Slot 4



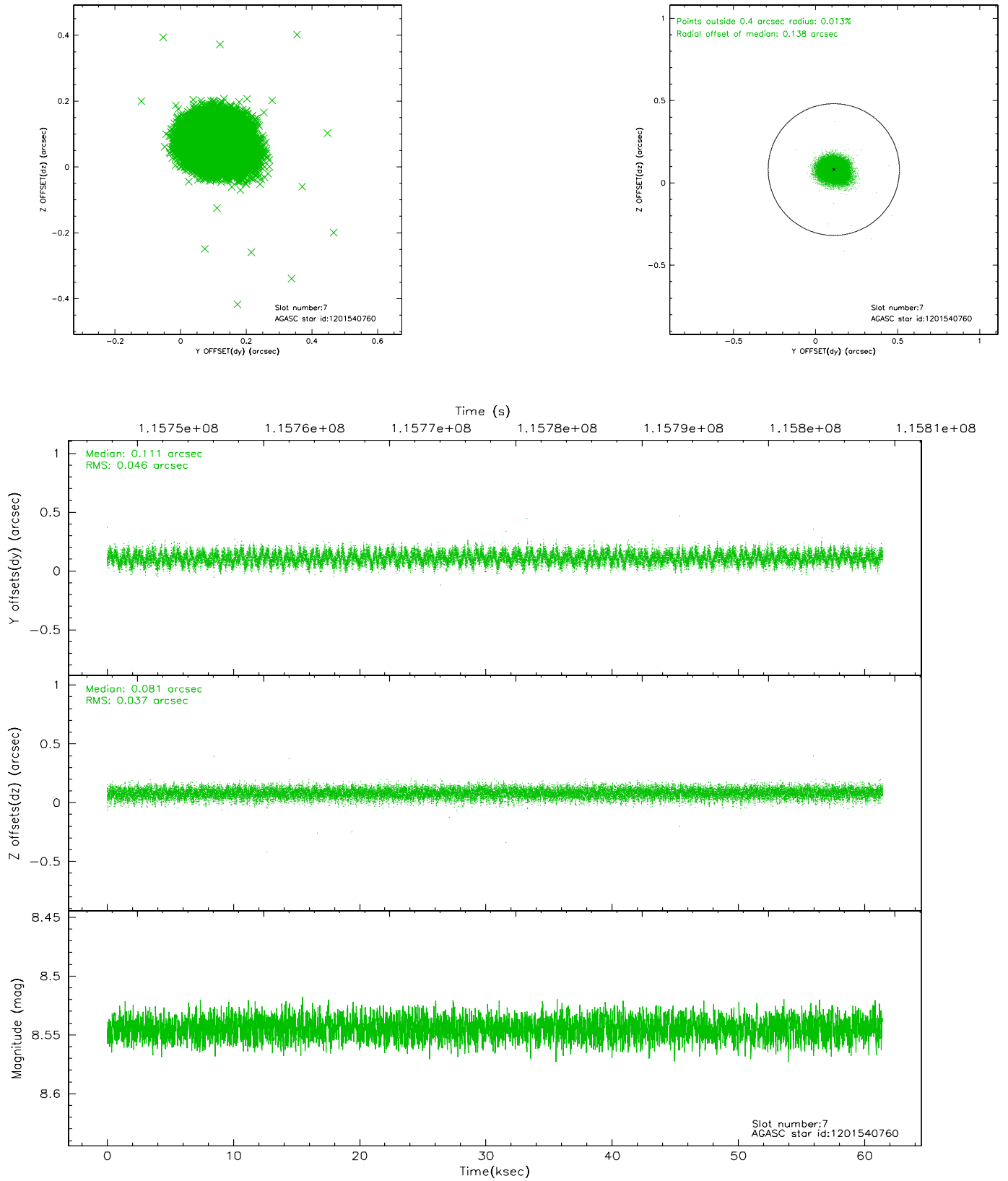
2.4.3 Slot 5



2.4.4 Slot 6

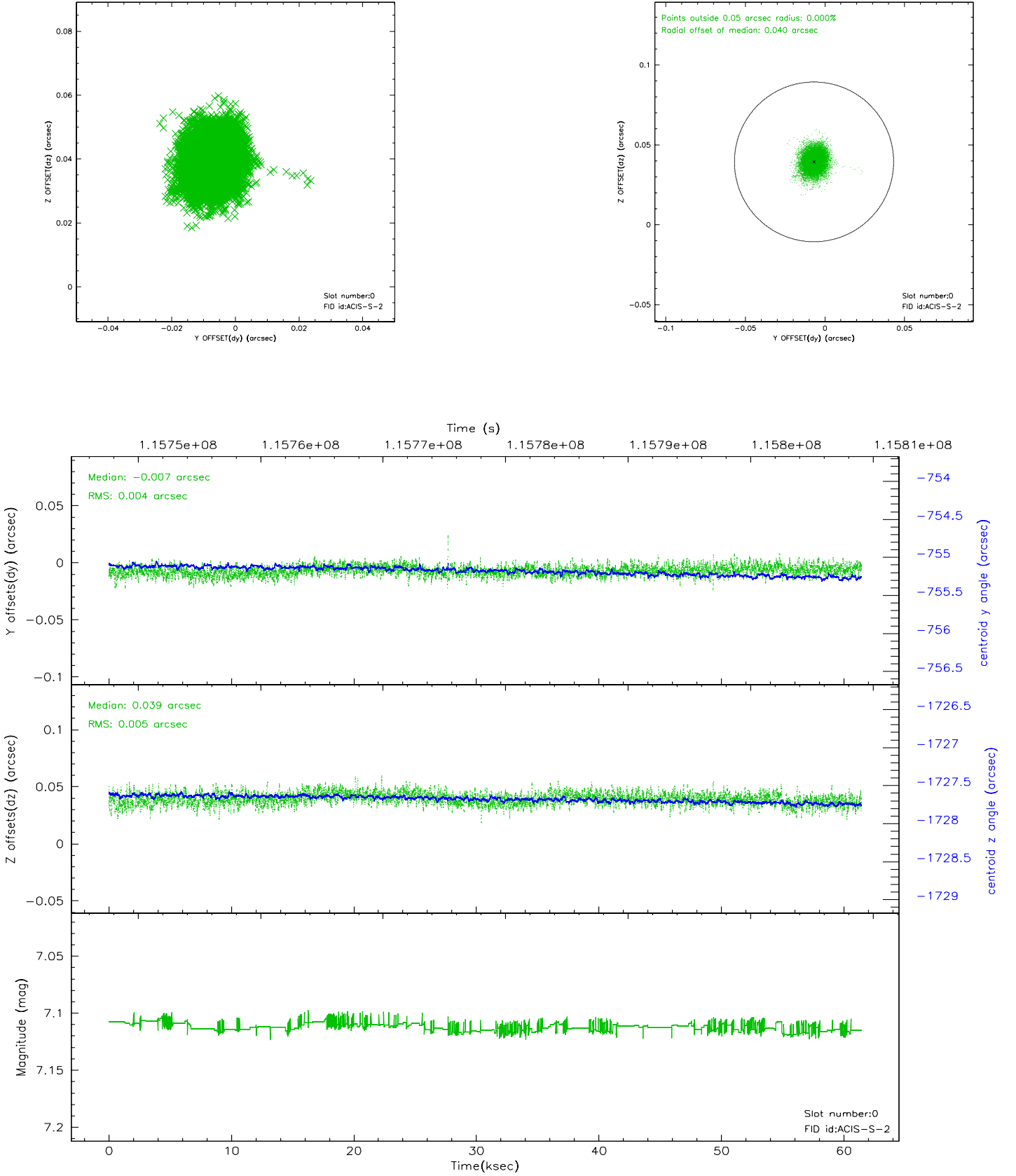


2.4.5 Slot 7

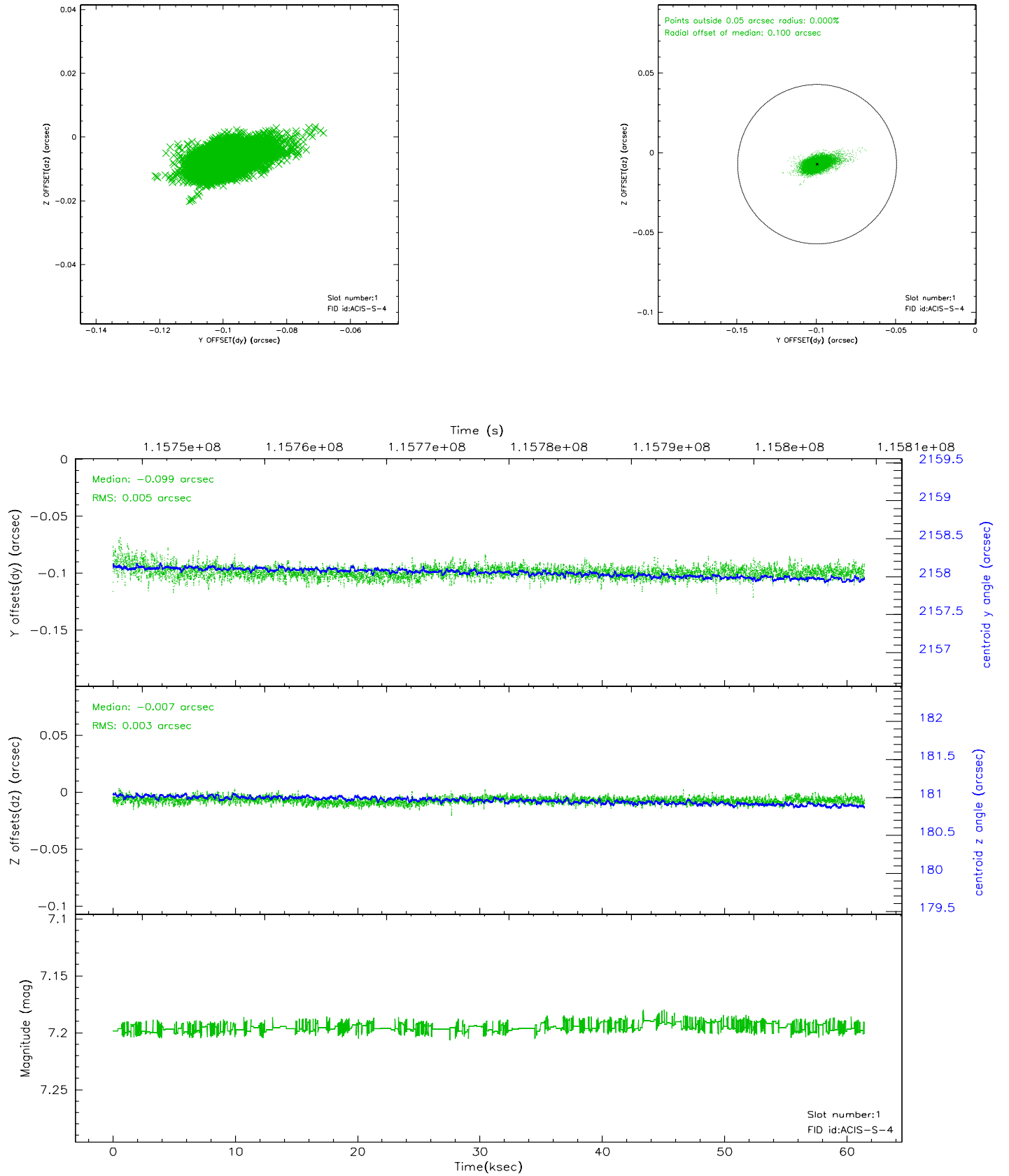


2.5 FID Slots

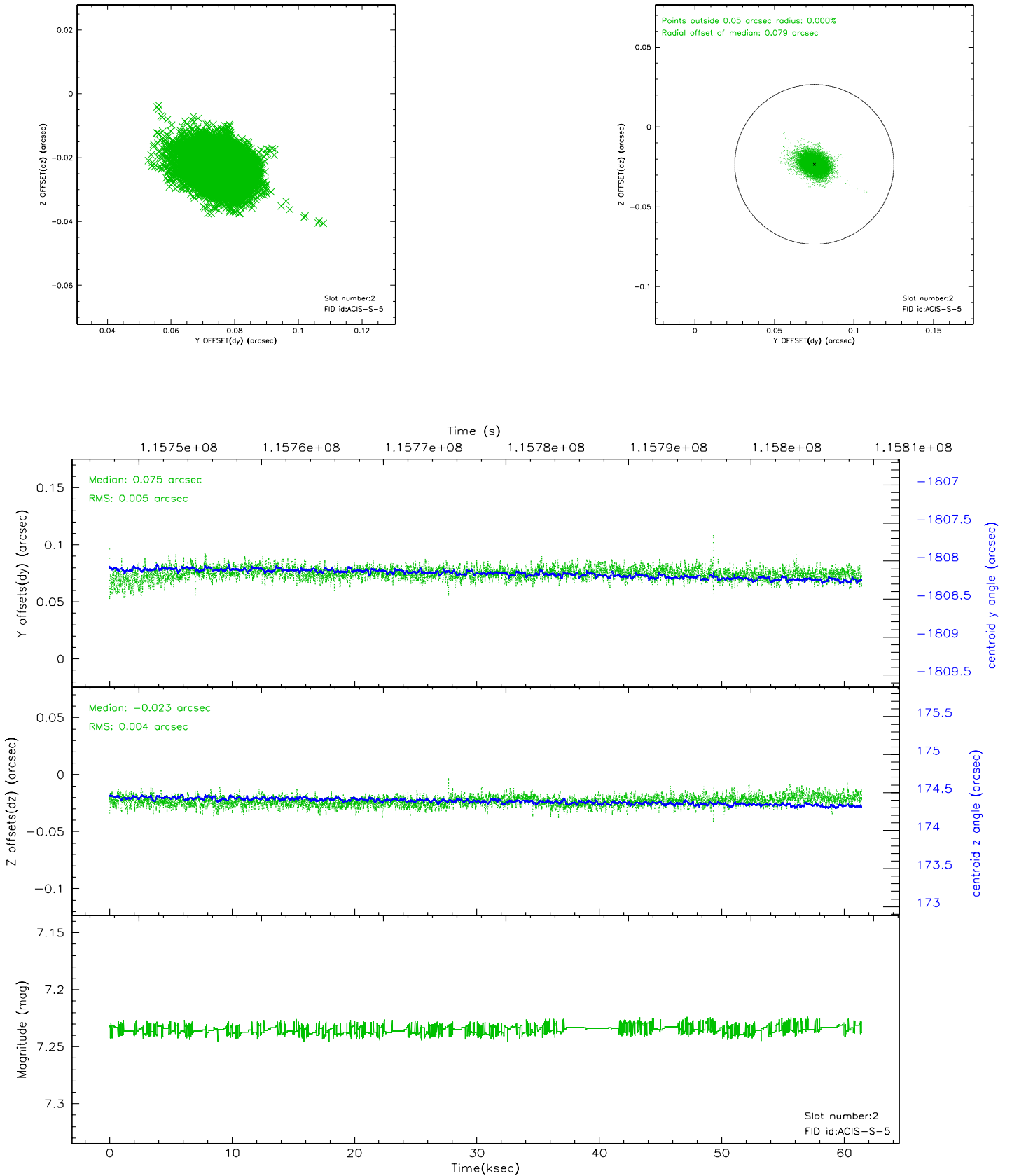
2.5.1 Slot 0



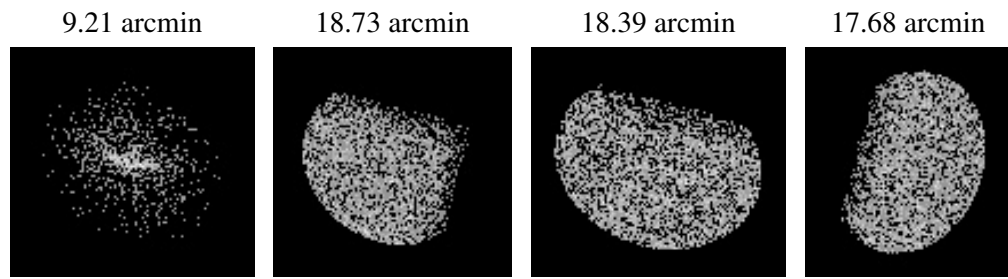
2.5.2 Slot 1



2.5.3 Slot 2



3 Point Sources



A Summary

A.1 Status

V&V Scientist	Beth Sundheim
V&V Date (YYYY-MM-DD)	2007.01.03
V&V Edition	1
V&V Disposition and Status	OK
V&V Charge Time	60.211

A.2 Comments