

V&V Reference Report

L2 ASCDS Version : 7.6.10

Observation 1951 - L2 Version 001
Chandra X-Ray Center

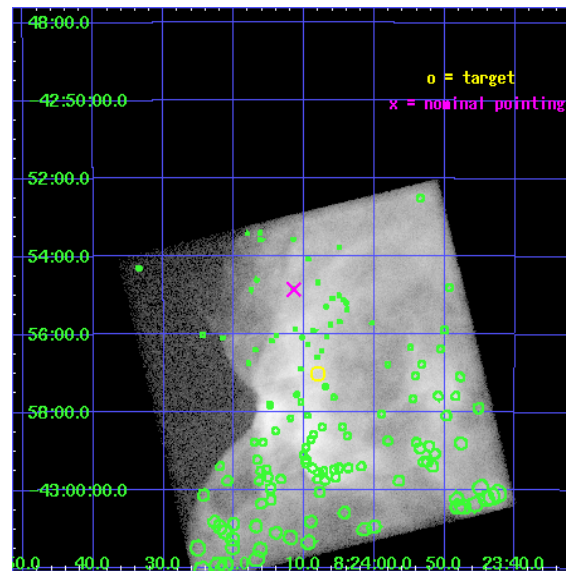
L2 Processing Date : Jan 13 2007

Contents

1	Front	2
2	OBI	3
2.1	OBI	3
2.1.1	Images	3
2.1.2	Parameters	4
2.1.3	Events	4
2.2	Compared Parameters	5
2.3	Aspect	6
2.4	Star Slots	9
2.4.1	Slot 3	9
2.4.2	Slot 4	10
2.4.3	Slot 5	11
2.4.4	Slot 6	12
2.4.5	Slot 7	13
2.5	FID Slots	14
2.5.1	Slot 0	14
2.5.2	Slot 1	15
2.5.3	Slot 2	16
3	Point Sources	17
A	Summary	18
A.1	Status	18
A.2	Comments	18

1 Front

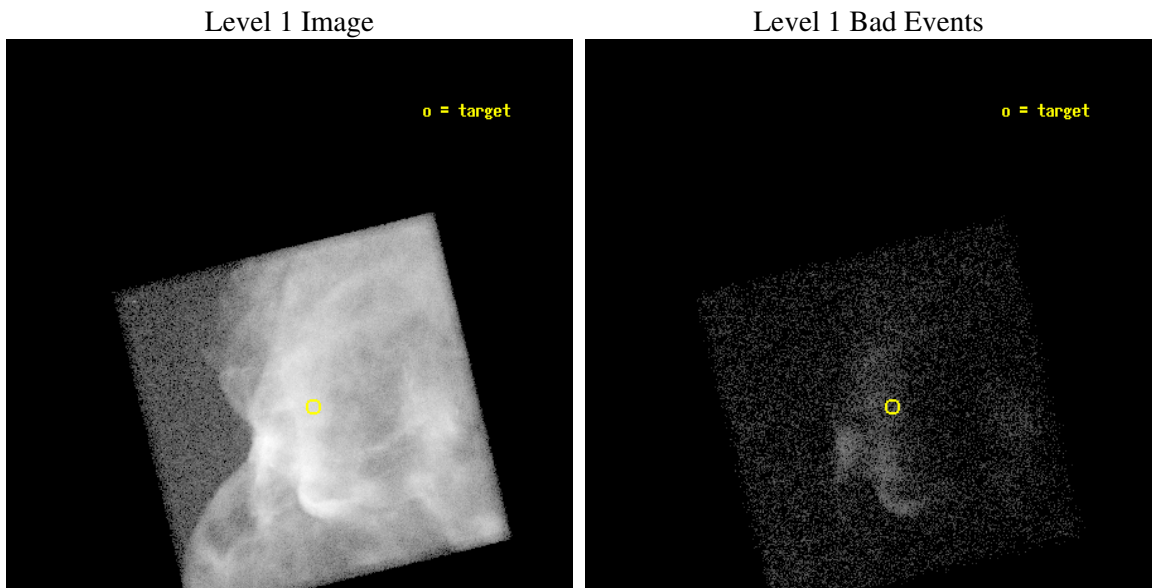
seq_num	500128
obs_id	1951
title	EXPLORING SHOCK CONDITIONS IN THE PUPPIS A SNR
observer	Dr Una Hwang
object	PUPPIS BRIGHT E KNOT
dtcycle	0
cycle	P
ra_targ	126.033333
dec_targ	-42.95
ra_nom	126.04782033407
dec_nom	-42.914065269125
roll_nom	76.295247248322
revision	3
ontime	10773.0
livetime	10627.614237235
ontime7	10773.0
l2events	2546177



2 OBI

2.1 OBI

2.1.1 Images



2.1.2 Parameters

obi_num	1
ascdsver	7.6.10
caldbver	3.3.0
date	2007-01-13T15:15:50
revision	3

sched_exp_time	10643.641000
ontime	10773.0
ontime7	10773.0
l1events	2705480

2.1.3 Events

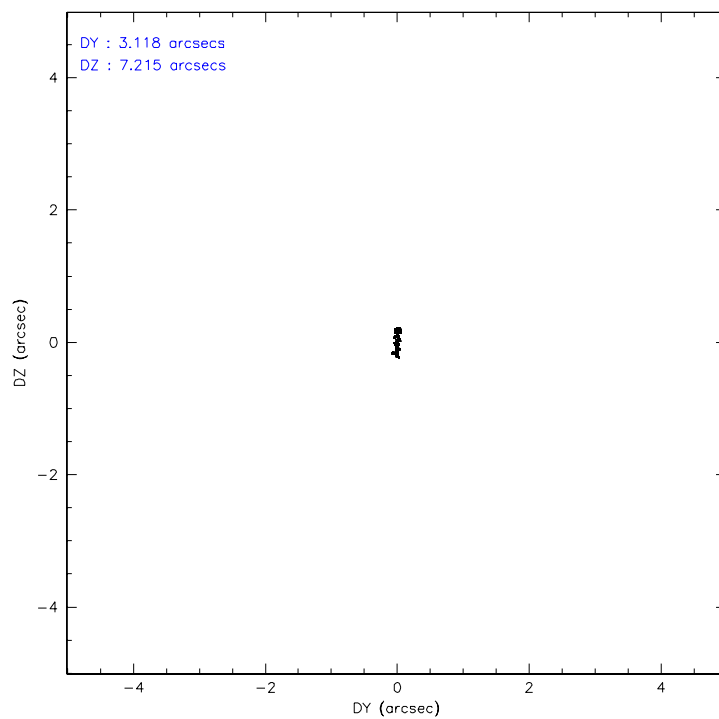
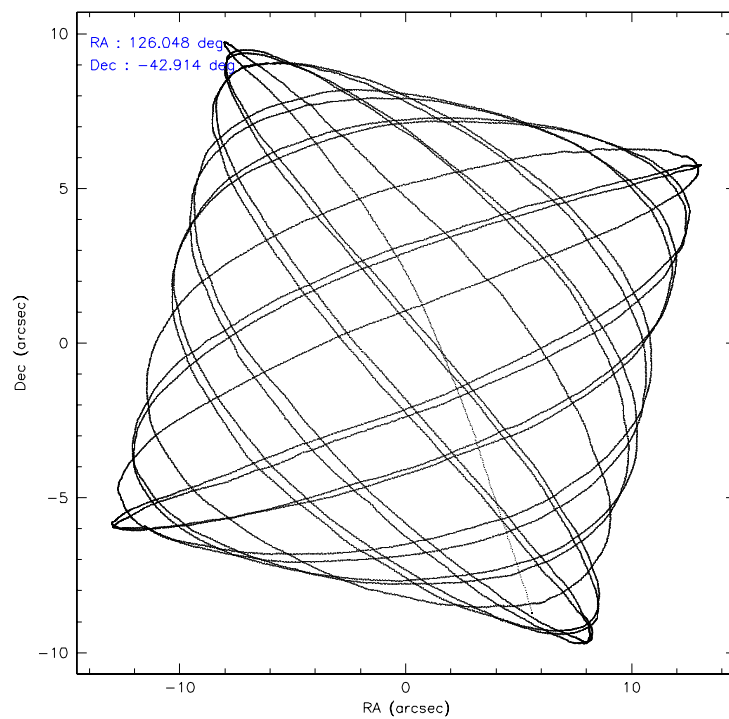
	ccd 7
level 1 events	2705480
rejected events	136661
rejected %	5%

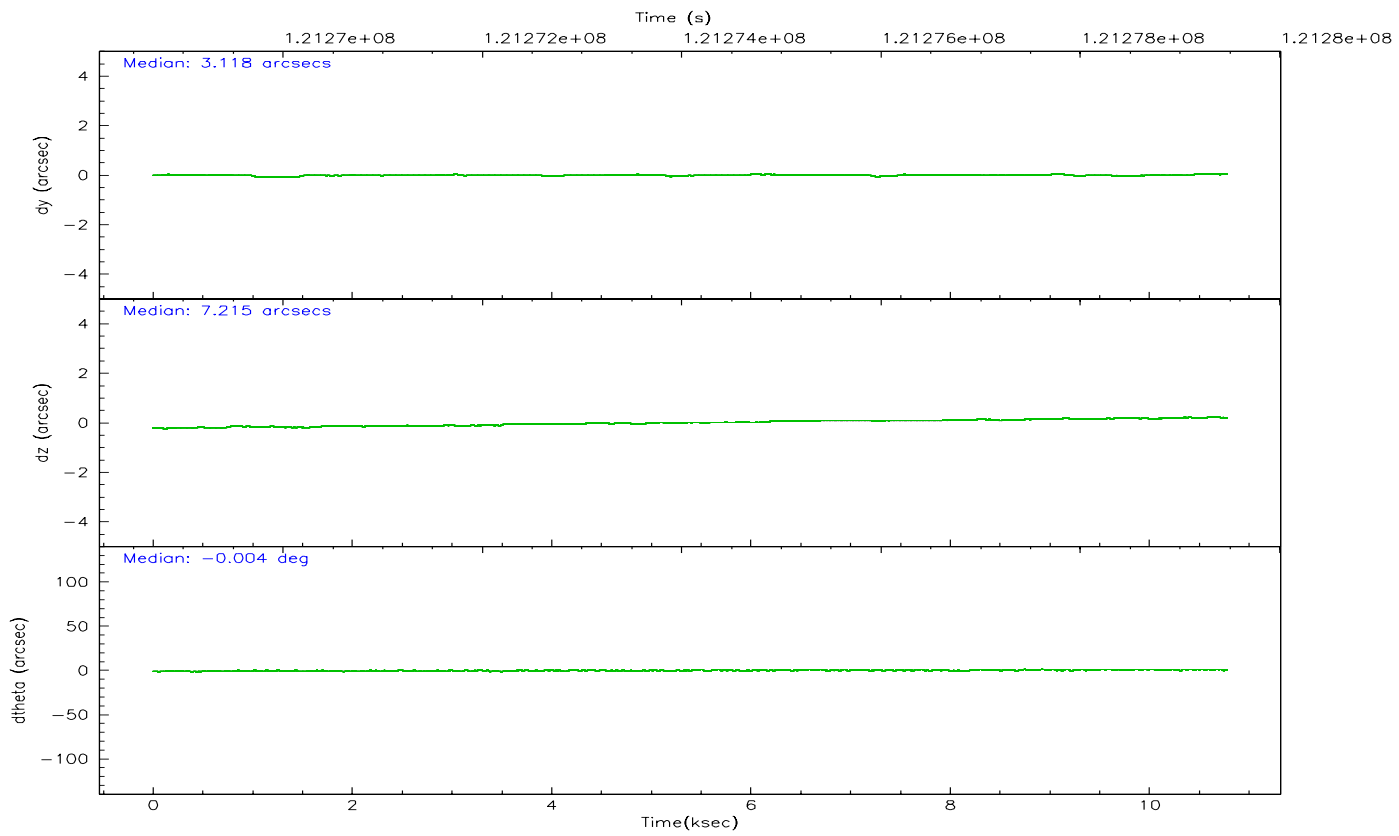
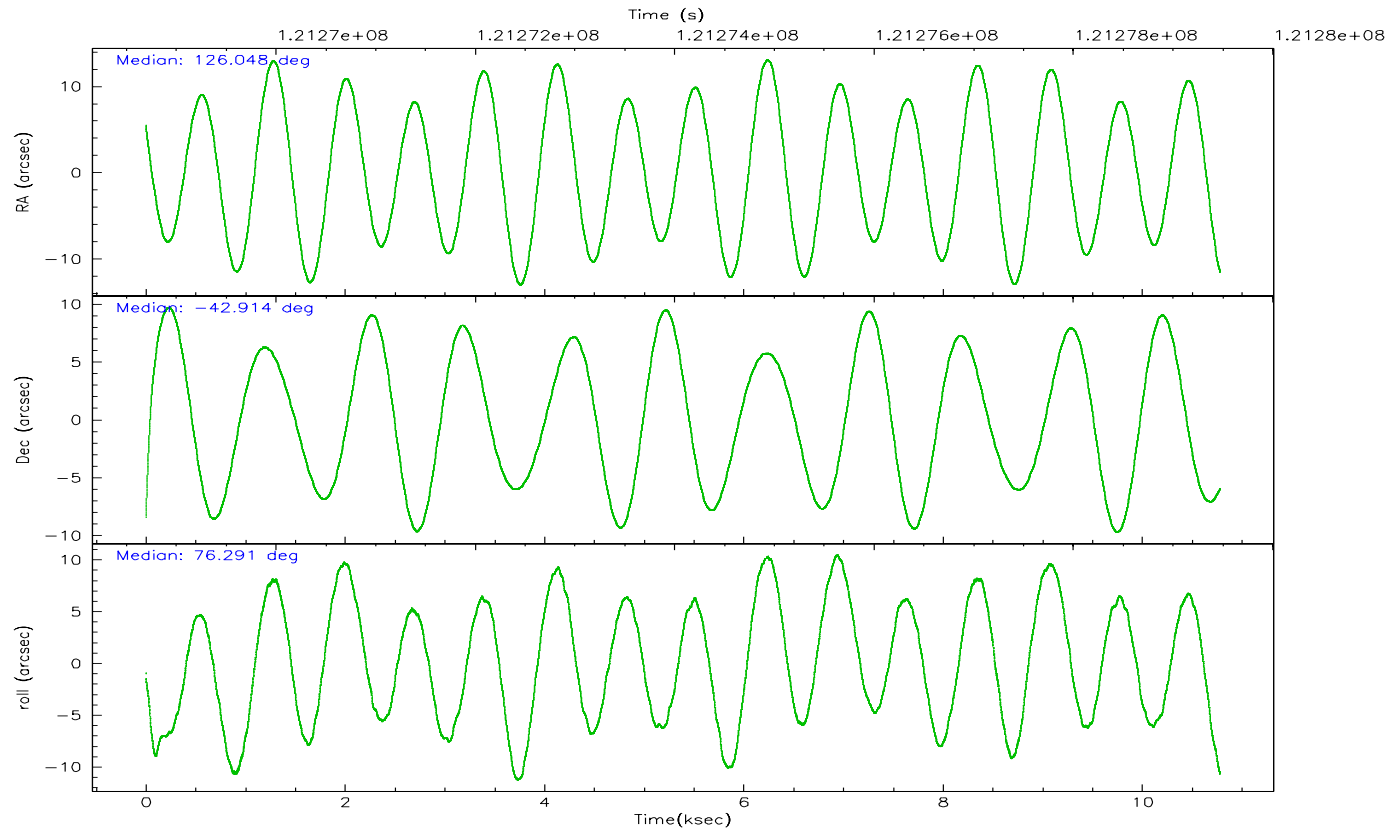
	ccd 7
grade 0 events	877765
	32%
grade 1 events	3731
	0%
grade 2 events	732897
	27%
grade 3 events	309128
	11%
grade 4 events	306514
	11%
grade 5 events	27366
	1%
grade 6 events	389409
	14%
grade 7 events	58670
	2%

2.2 Compared Parameters

Parameter	Planned	Actual	Parameter	Planned	Actual
Instrument	ACIS	ACIS	Obspar format version number	6	6
Detector	ACIS-7	ACIS-7	Obspar file type	PREDICTED	ACTUAL
Grating	NONE	NONE	Obspar update status	NONE	UPDATED
Data mode	GRADED	GRADED	Number of optional ACIS chips dropped	0	0
Observation mode	POINTING	POINTING	On-chip summing requested	N	N
Pointing RA	126.058692	126.0478203340739	Subarray requested	NONE	NONE
Pointing Dec	-42.940162	-42.91406526912539	Alternating exposures requested	N	N
Pointing Roll	76.146013	76.29524724832223	Primary exposure time	0.000000	3
SIM focus pos (mm)	-0.684267	-0.6828225247311905			
SIM defocus (mm)	0	0.001444936568705701			
SIM translation stage pos (mm)	-190.132523	-190.1425803651734			
SIM translation stage offset (mm)	0	0.01005778216563158			
Observation start time	121268830.184000	121267598.00075			
Observation start date	2001-11-04T13:46:06	2001-11-04T13:26:38			
Observation end time	121279474.184000	121279983.07625			
Observation end date	2001-11-04T16:43:30	2001-11-04T16:53:03			
Read mode	TIMED	TIMED			

2.3 Aspect



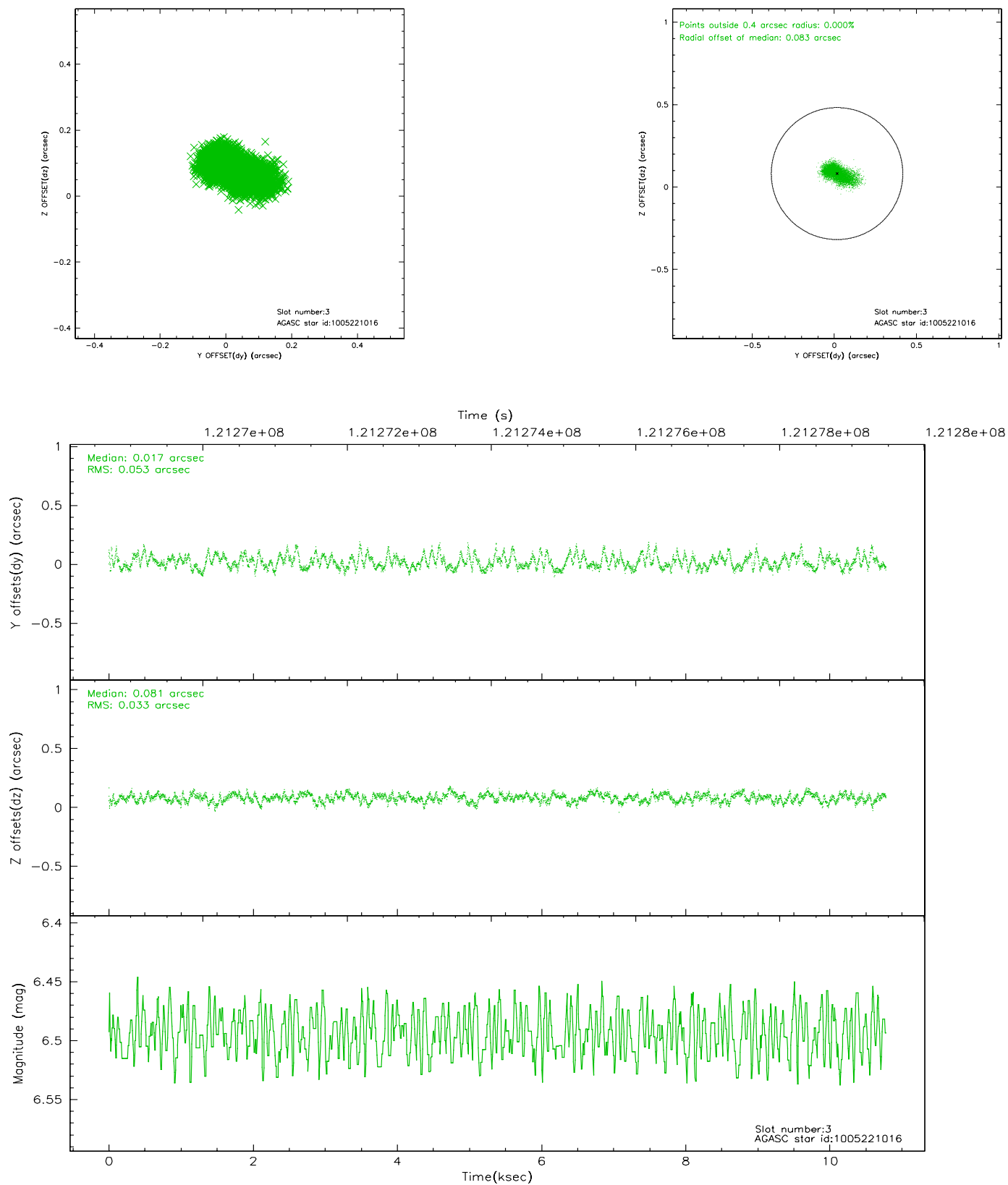


Slot Statistics

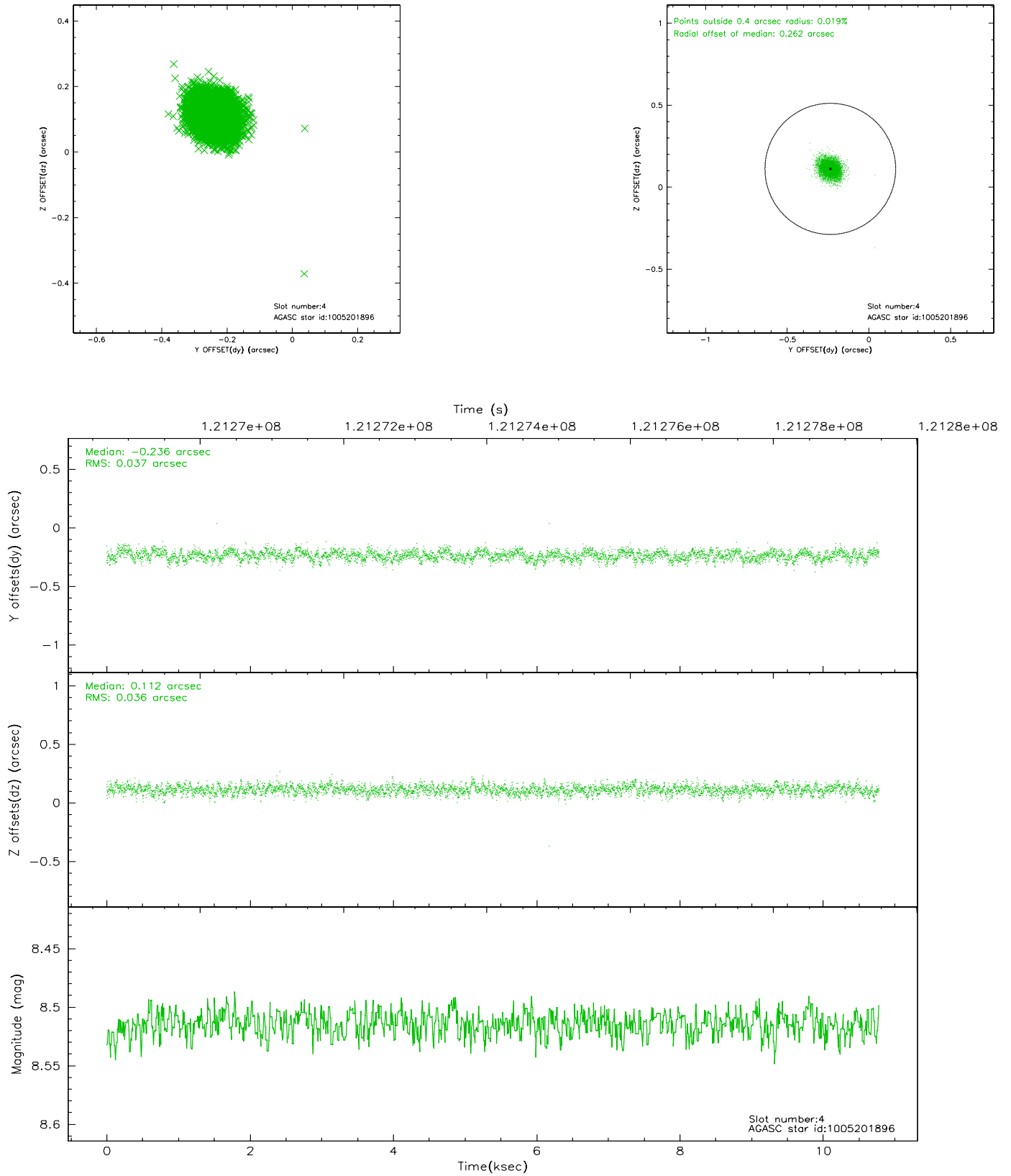
slot	status	id	mag	n_pts	med_dy	med_dz	dr1	dr2	ra	dec	mean_y	mean_z
0	FID	ACIS-S-2	7.11	2630	0.004	0.028	0.007	0.012	0.000000	0.000000	-755.76	-1728.31
1	FID	ACIS-S-4	7.20	2630	-0.072	-0.009	0.005	0.009	0.000000	0.000000	2157.23	179.64
2	FID	ACIS-S-5	7.24	2630	0.037	-0.010	0.007	0.011	0.000000	0.000000	-1807.94	173.86
3	GUIDE	1005221016	6.49	5260	0.017	0.081	0.065	0.112	126.238418	-42.769856	708.37	-313.79
4	GUIDE	1005201896	8.51	5260	-0.236	0.112	0.055	0.089	126.670468	-42.695868	1235.61	-1361.71
5	GUIDE	1005192328	8.96	5260	-0.074	0.031	0.074	0.125	126.494374	-42.919317	345.07	-1097.58
6	GUIDE	1005717968	9.65	5253	0.173	-0.078	0.109	0.181	125.336033	-43.394483	-2048.62	1441.98
7	GUIDE	1005721976	8.79	5259	0.119	-0.148	0.064	0.102	125.870614	-43.464166	-1950.20	25.82

2.4 Star Slots

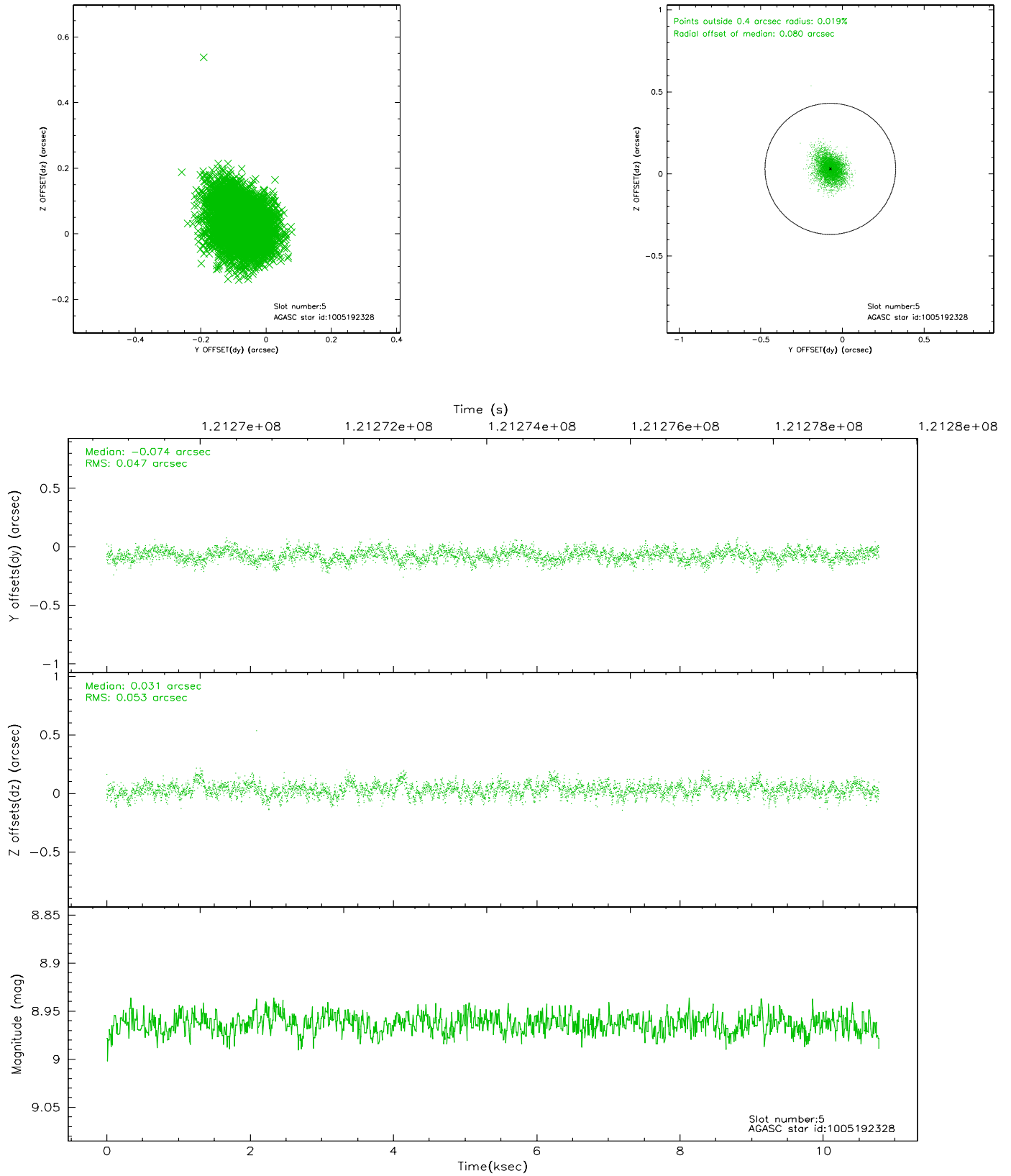
2.4.1 Slot 3



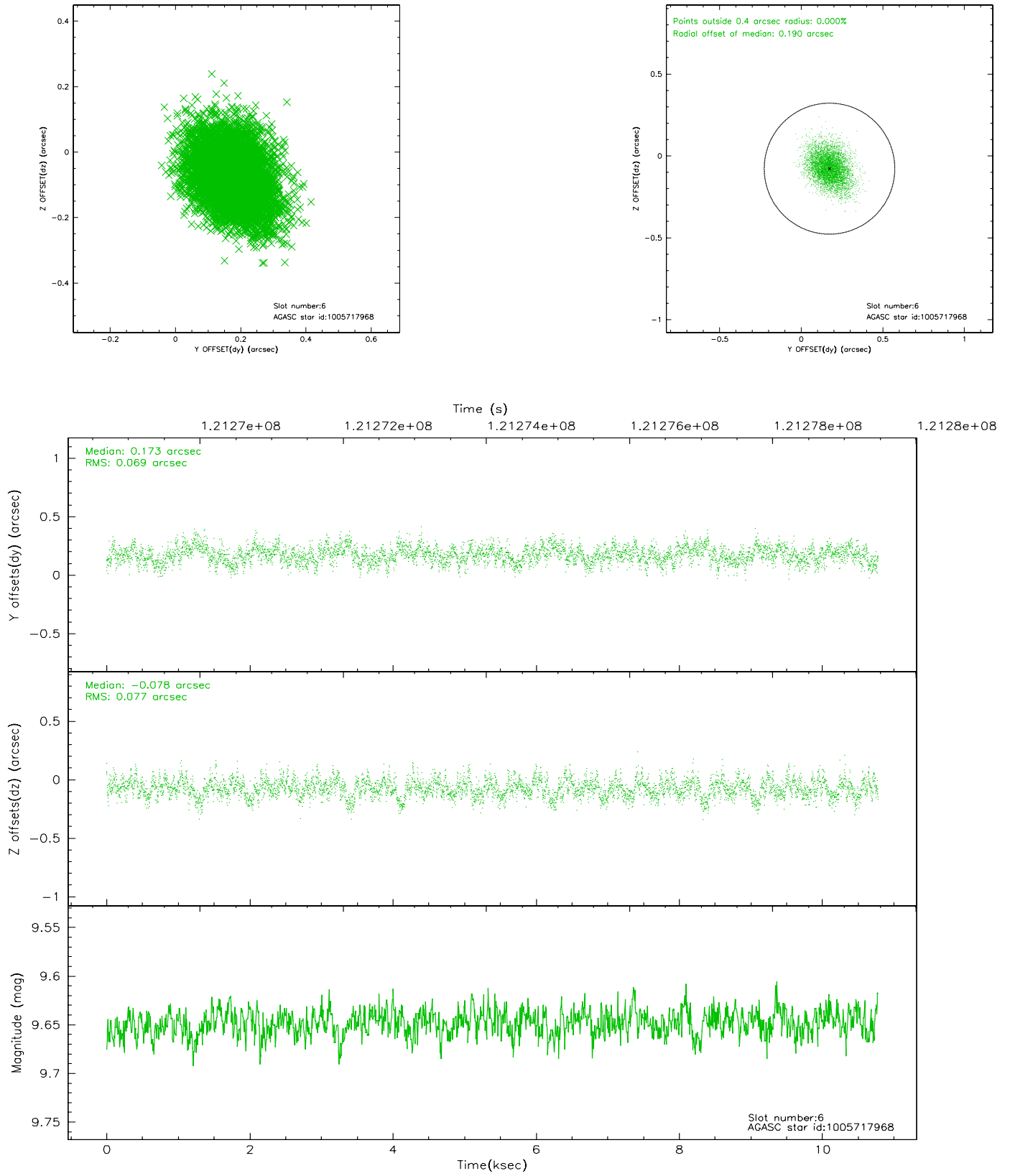
2.4.2 Slot 4



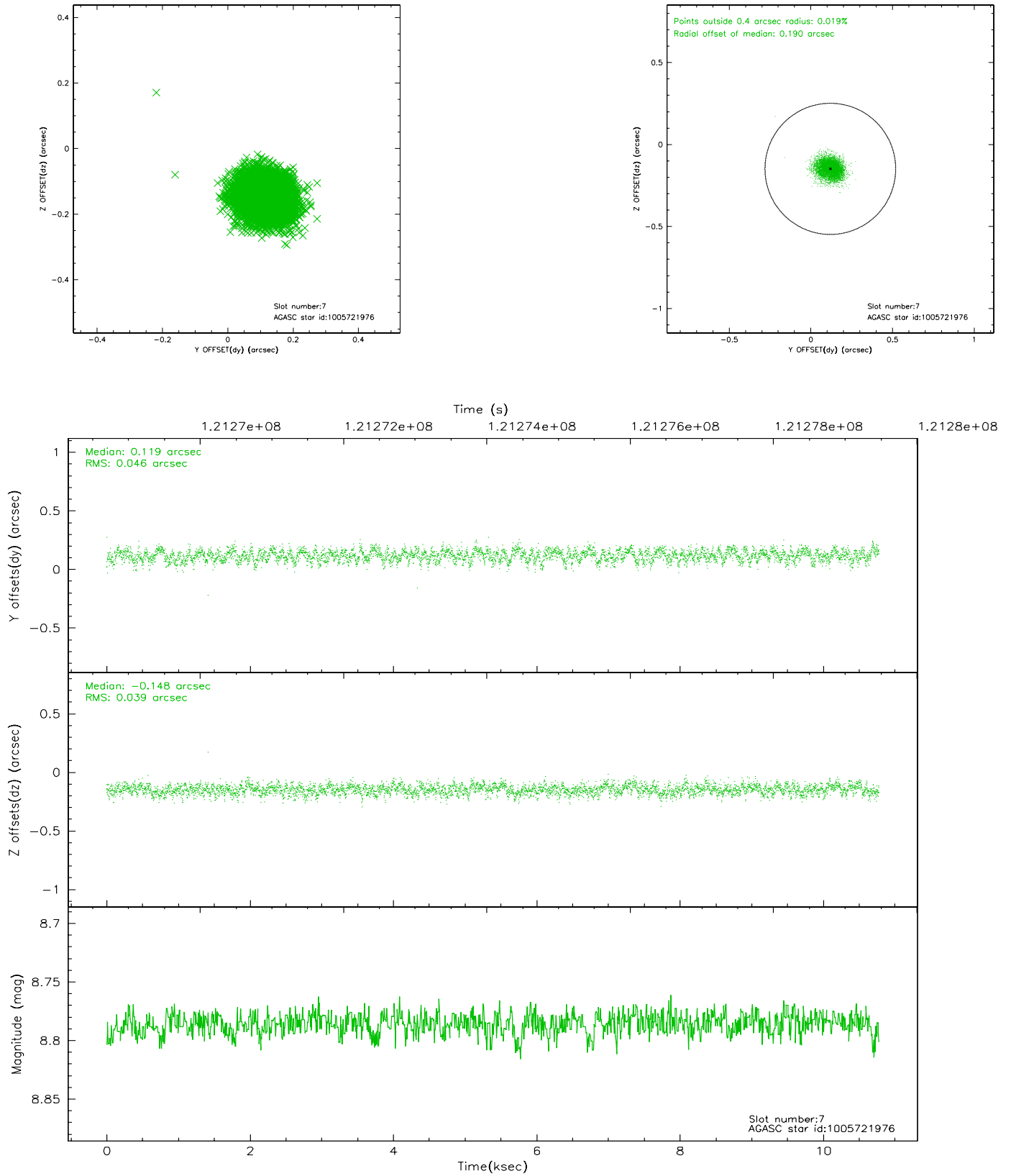
2.4.3 Slot 5



2.4.4 Slot 6

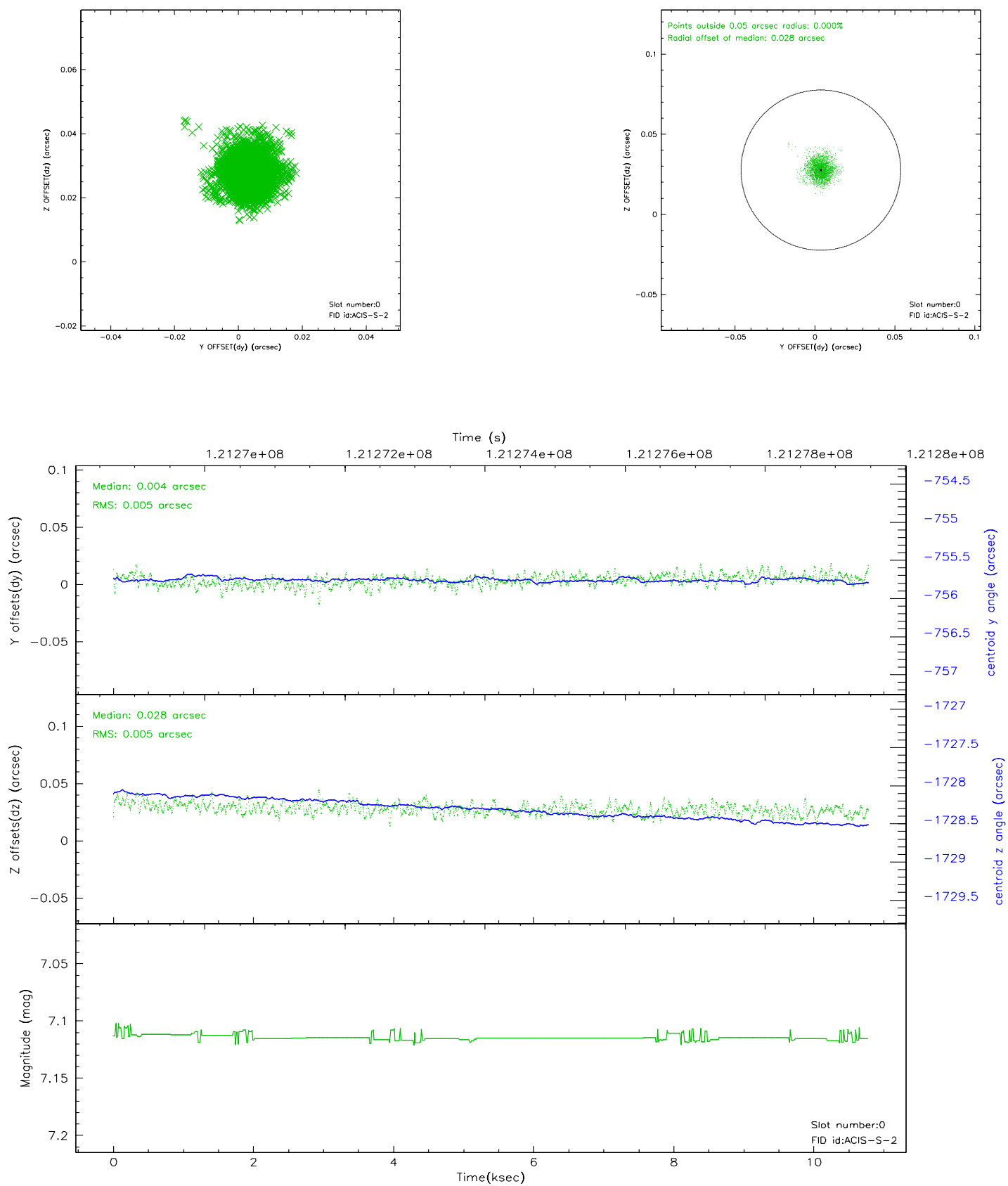


2.4.5 Slot 7

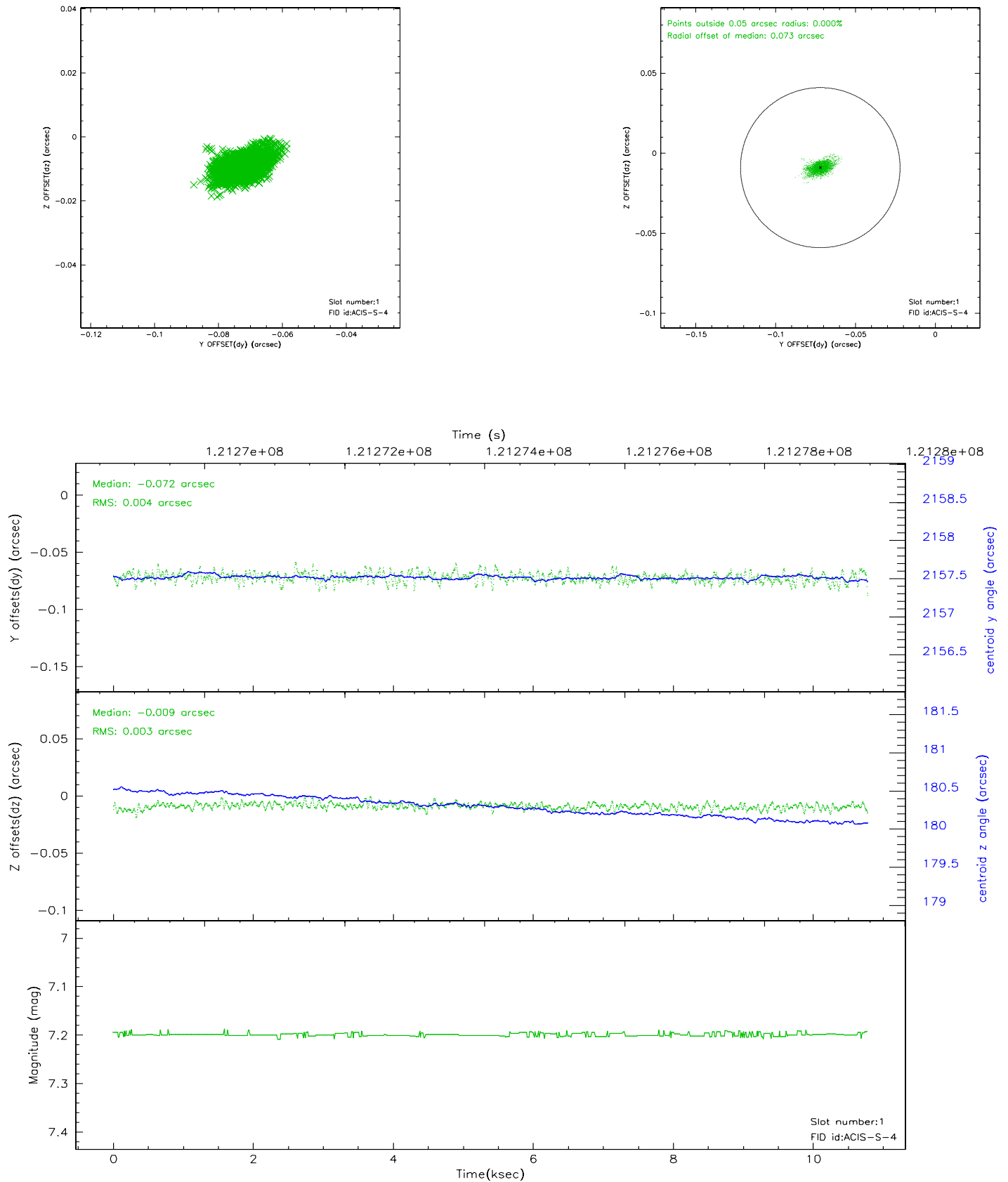


2.5 FID Slots

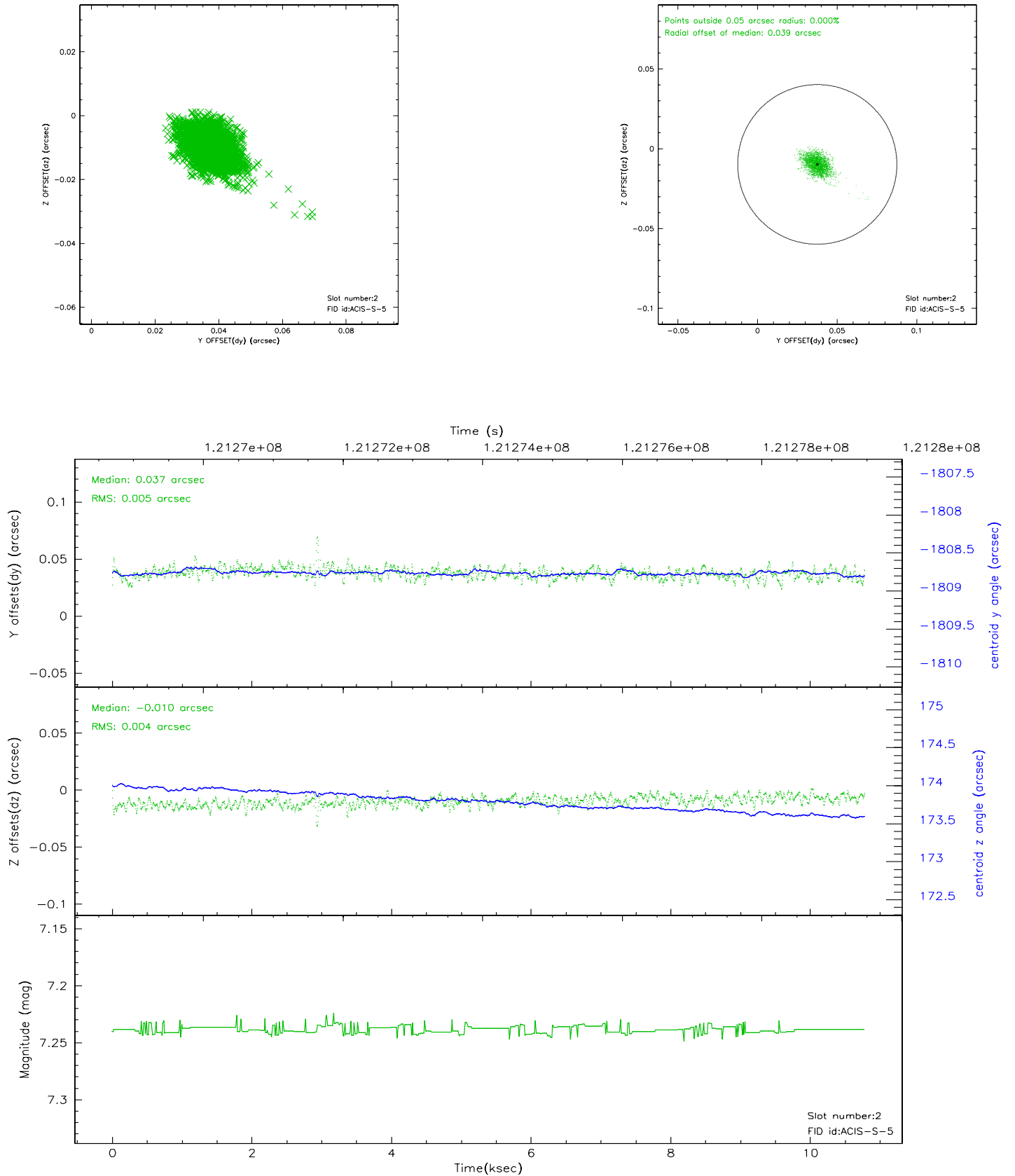
2.5.1 Slot 0



2.5.2 Slot 1



2.5.3 Slot 2



3 Point Sources

4.06 arcmin



A Summary

A.1 Status

V&V Scientist	Beth Sundheim
V&V Date (YYYY-MM-DD)	2007.01.16
V&V Edition	1
V&V Disposition and Status	OK
V&V Charge Time	10.773

A.2 Comments