

V&V Reference Report

L2 ASCDS Version : 7.6.10

Observation 1771 - L2 Version 4
Chandra X-Ray Center

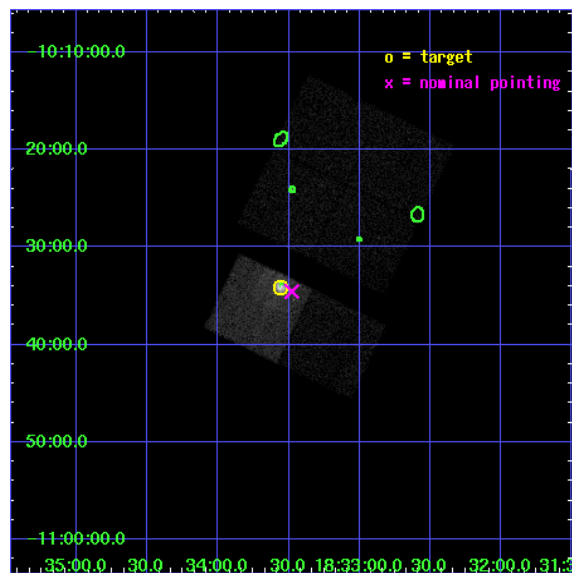
L2 Processing Date : Nov 18 2008

Contents

1	Front	2
2	OBI	3
2.1	OBI	3
2.1.1	Images	3
2.1.2	Bias	3
2.1.3	Parameters	4
2.1.4	Events	4
2.2	Compared Parameters	5
2.3	Aspect	6
2.4	Star Slots	9
2.4.1	Slot 3	9
2.4.2	Slot 4	10
2.4.3	Slot 5	11
2.4.4	Slot 6	12
2.4.5	Slot 7	13
2.5	FID Slots	14
2.5.1	Slot 0	14
2.5.2	Slot 1	15
2.5.3	Slot 2	16
3	Point Sources	17
A	Summary	18
A.1	Status	18
A.2	Comments	18

1 Front

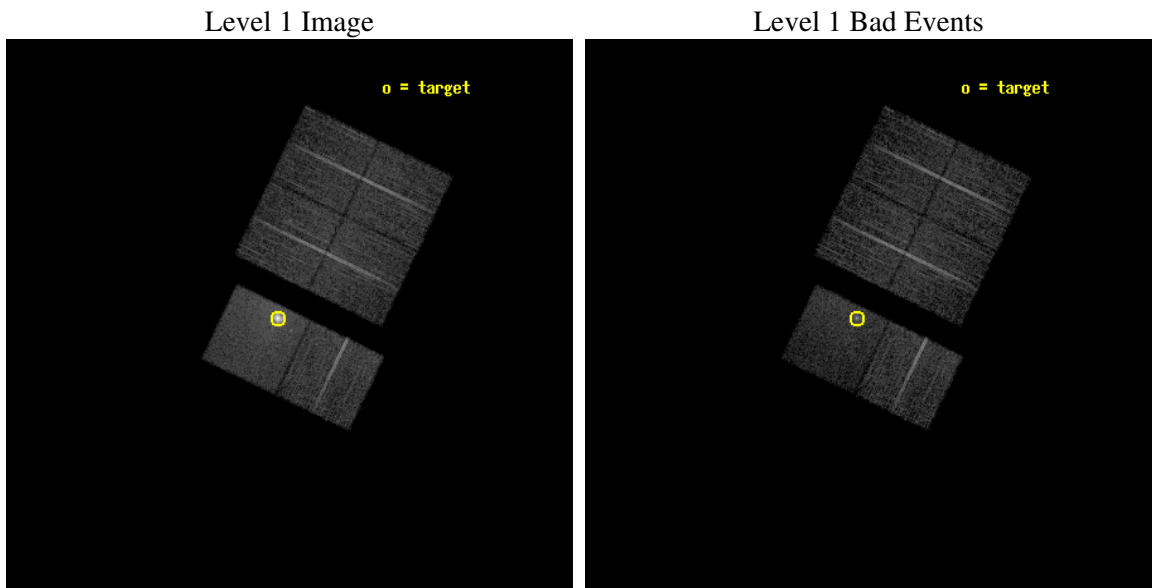
seq_num	590197
obs_id	1771
title	HRC RESPONSE TO CONTINUUM SOURCE.
observer	Dr. CXC Calibration
object	G21.5-0.9 [Chip S3, T=110, Offsets=-1,0,-3]
dtcycle	0
cycle	P
ra_targ	278.389583
dec_targ	-10.568528
ra_nom	278.36960480332
dec_nom	-10.575939084291
roll_nom	205.69267609794
revision	4
ontime	7318.4000068158
livetime	7225.7300193181
ontime0	7318.4000068158
ontime1	7318.4000068158
ontime2	7318.4000068158
ontime3	7318.4000068158
ontime6	7318.4000068158
ontime7	7318.4000068158
l2events	71120



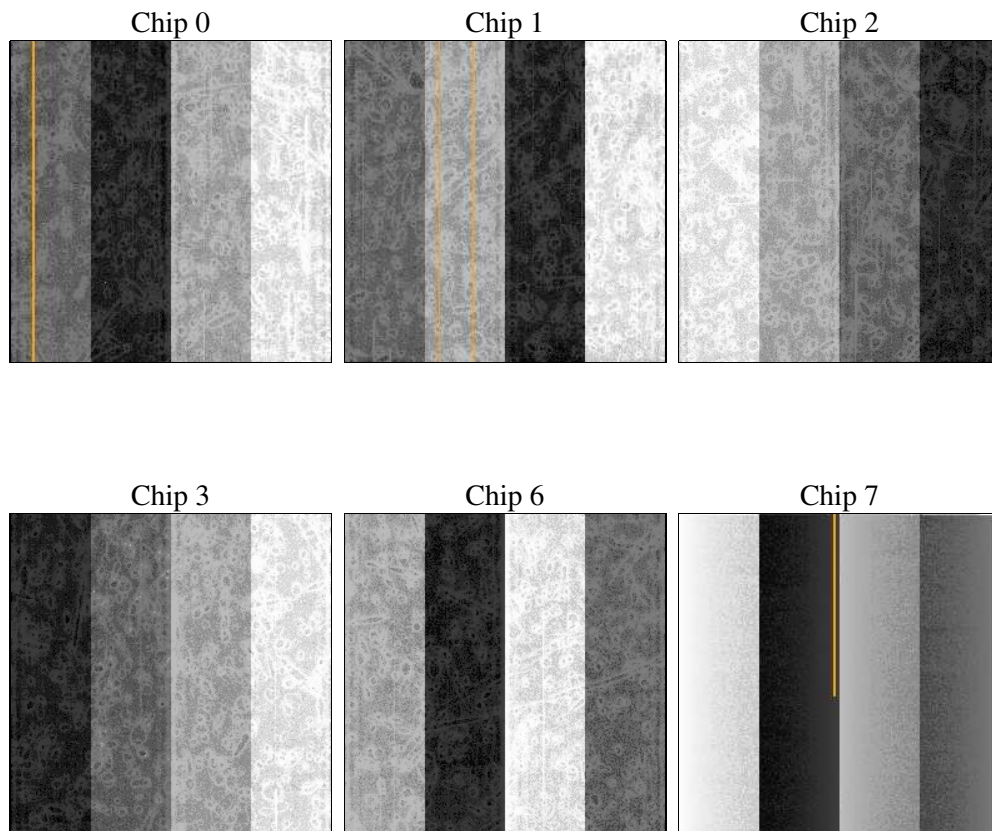
2 OBI

2.1 OBI

2.1.1 Images



2.1.2 Bias



2.1.3 Parameters

obi_num	0
ascdsver	7.6.11.9
caldsver	3.5.0
date	2008-11-18T17:57:58
revision	4

sched_exp_time	7560.000000
ontime	7318.4000068158
ontime0	7318.4000068158
ontime1	7318.4000068158
ontime2	7318.4000068158
ontime3	7318.4000068158
ontime6	7318.4000068158
ontime7	7318.4000068158
l1events	333738

2.1.4 Events

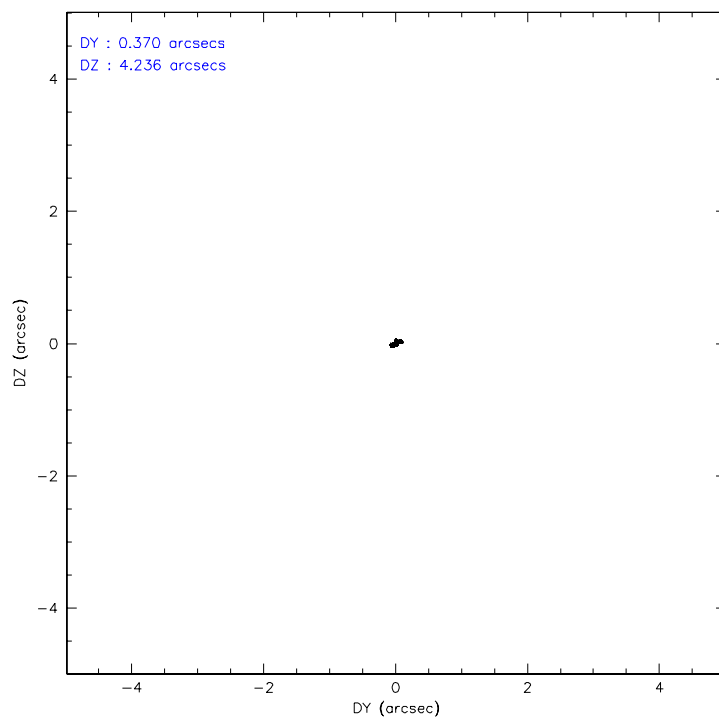
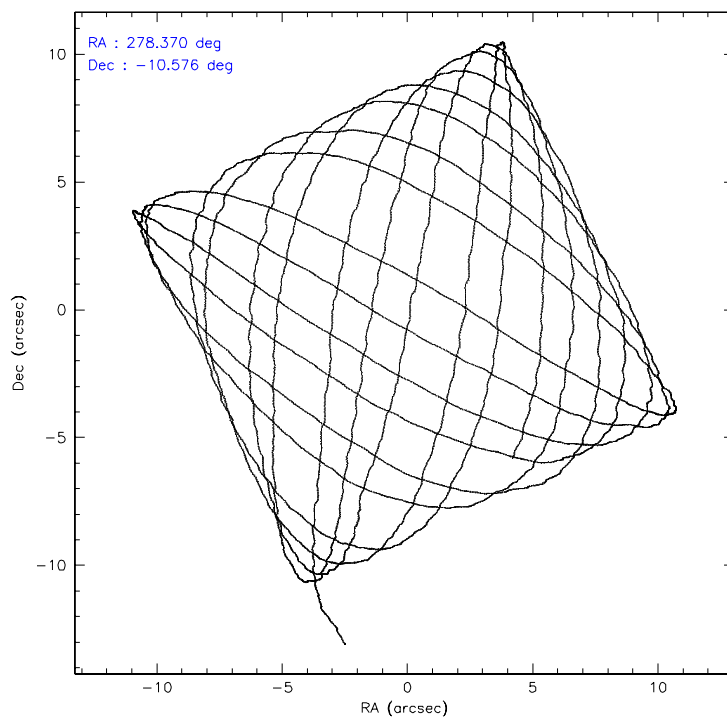
	ccd 0	ccd 1	ccd 2	ccd 3	ccd 6	ccd 7
level 1 events	49766	45317	50763	51334	53084	83474
rejected events	44389	39868	45755	45488	47424	36662
rejected %	89%	87%	90%	88%	89%	43%

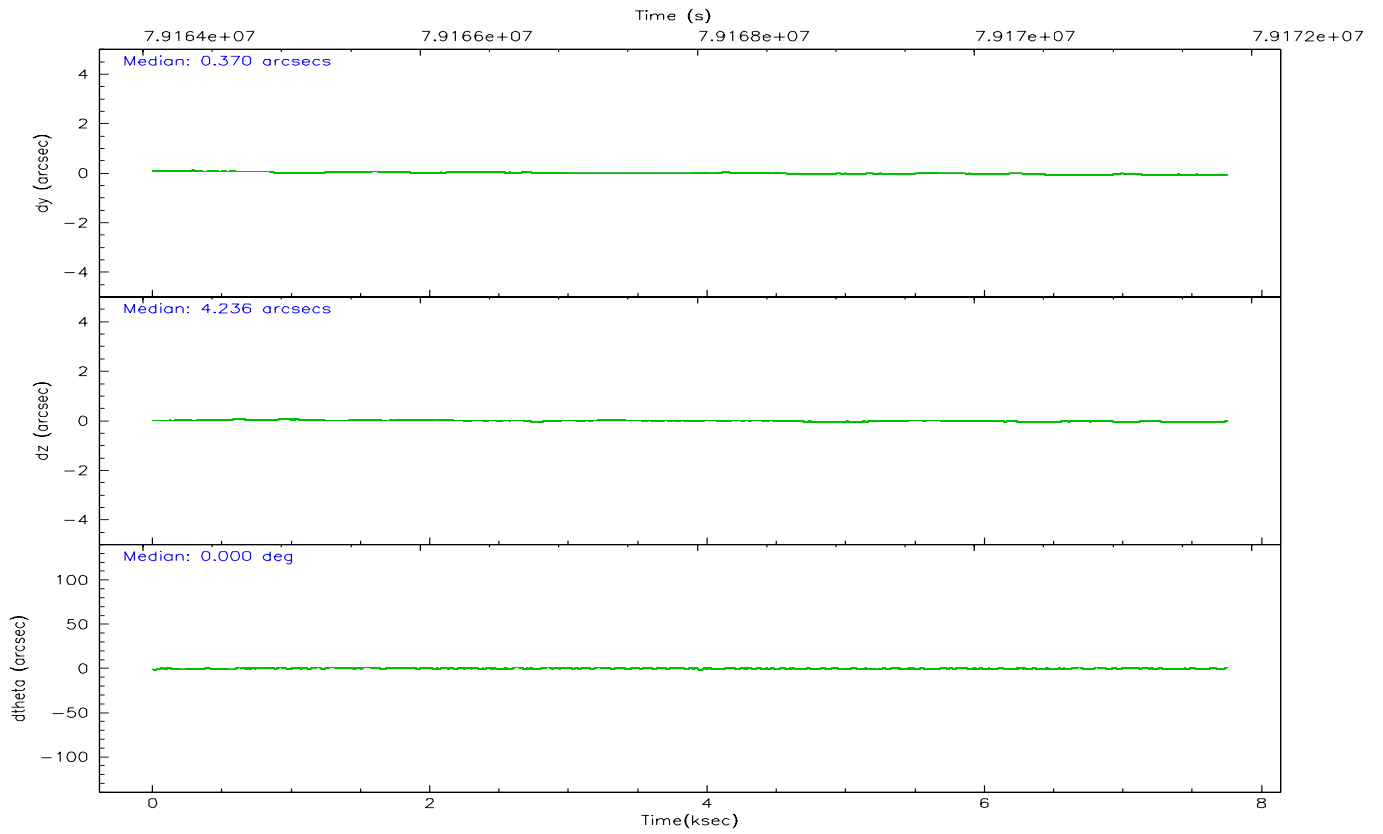
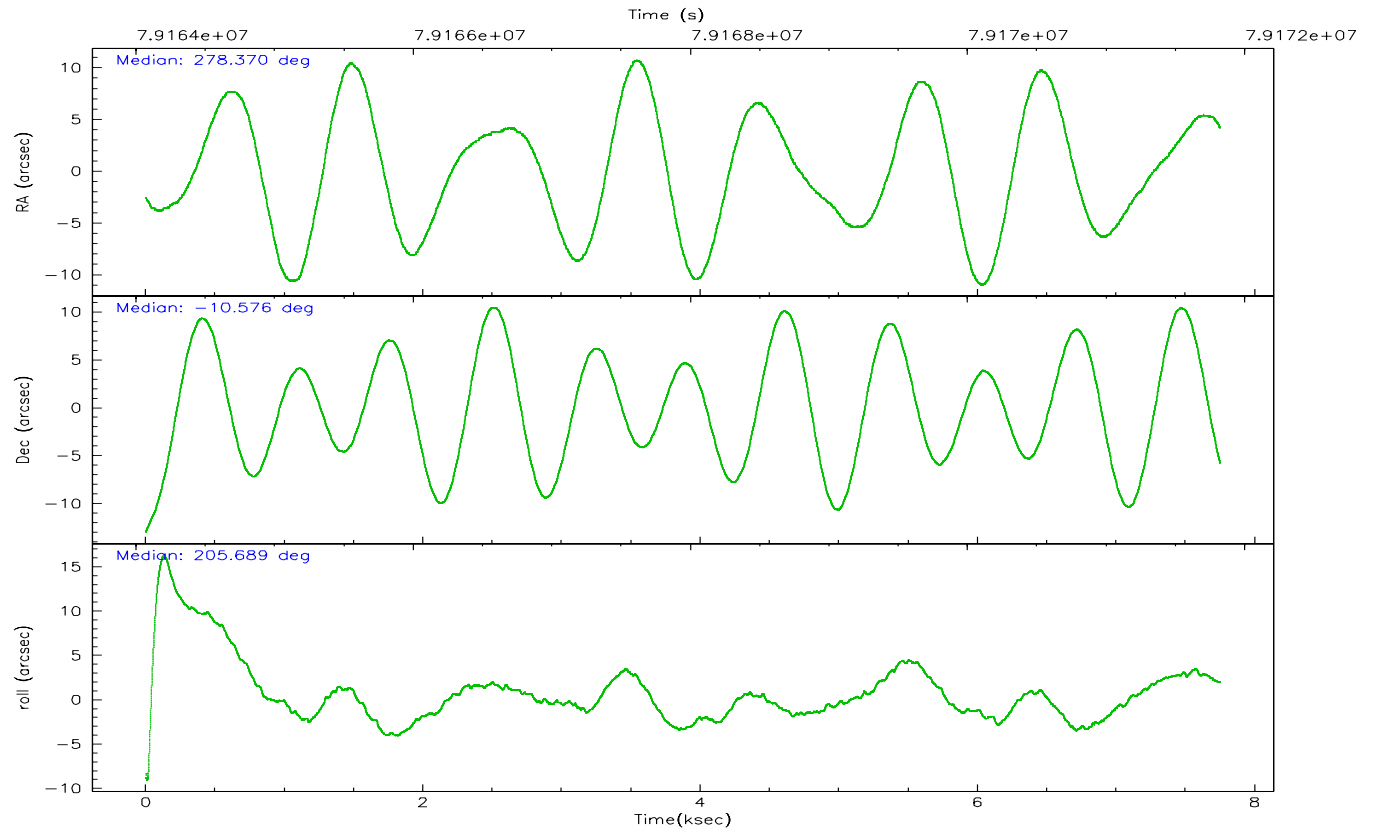
	ccd 0	ccd 1	ccd 2	ccd 3	ccd 6	ccd 7
grade 0 events	1361	1319	1136	1529	1184	5268
	2%	2%	2%	2%	2%	6%
grade 1 events	18	10	9	8	10	70
	0%	0%	0%	0%	0%	0%
grade 2 events	2026	1977	2038	2303	2242	11681
	4%	4%	4%	4%	4%	13%
grade 3 events	375	403	301	351	318	3862
	0%	0%	0%	0%	0%	4%
grade 4 events	392	379	310	353	337	3231
	0%	0%	0%	0%	0%	3%
grade 5 events	1043	1010	930	1042	1127	3965
	2%	2%	1%	2%	2%	4%
grade 6 events	1228	1374	1227	1313	1585	22805
	2%	3%	2%	2%	2%	27%
grade 7 events	43323	38845	44812	44435	46281	32592
	87%	85%	88%	86%	87%	39%

2.2 Compared Parameters

Parameter	Planned	Actual	Parameter	Planned	Actual
Instrument	ACIS	ACIS	Obspar format version number	6	6
Detector	ACIS-012367	ACIS-012367	Obspar file type	PREDICTED	ACTUAL
Grating	NONE	NONE	Obspar update status	NONE	UPDATED
Data mode	FAINT	FAINT	Number of optional ACIS chips dropped	0	0
Observation mode	POINTING	POINTING	On-chip summing requested	N	N
Pointing RA	278.385154	278.3696048033225	Subarray requested	NONE	NONE
Pointing Dec	-10.553246	-10.57593908429134	Alternating exposures requested	N	N
Pointing Roll	205.538935	205.6926760979435	Primary exposure time	0.000000	3.2
SIM focus pos (mm)	-0.684267	-0.6828225247311905			
SIM defocus (mm)	0	0.001444936568705701			
SIM translation stage pos (mm)	-198.916523	-198.9099978217132			
SIM translation stage offset (mm)	8.784000000000001	8.777475238705364			
Observation start time	79164266.184000	79163890.215784			
Observation start date	2000-07-05T06:03:22	2000-07-05T05:58:10			
Observation end time	79171826.184000	79171960.041081			
Observation end date	2000-07-05T08:09:22	2000-07-05T08:12:40			
Read mode	TIMED	TIMED			

2.3 Aspect



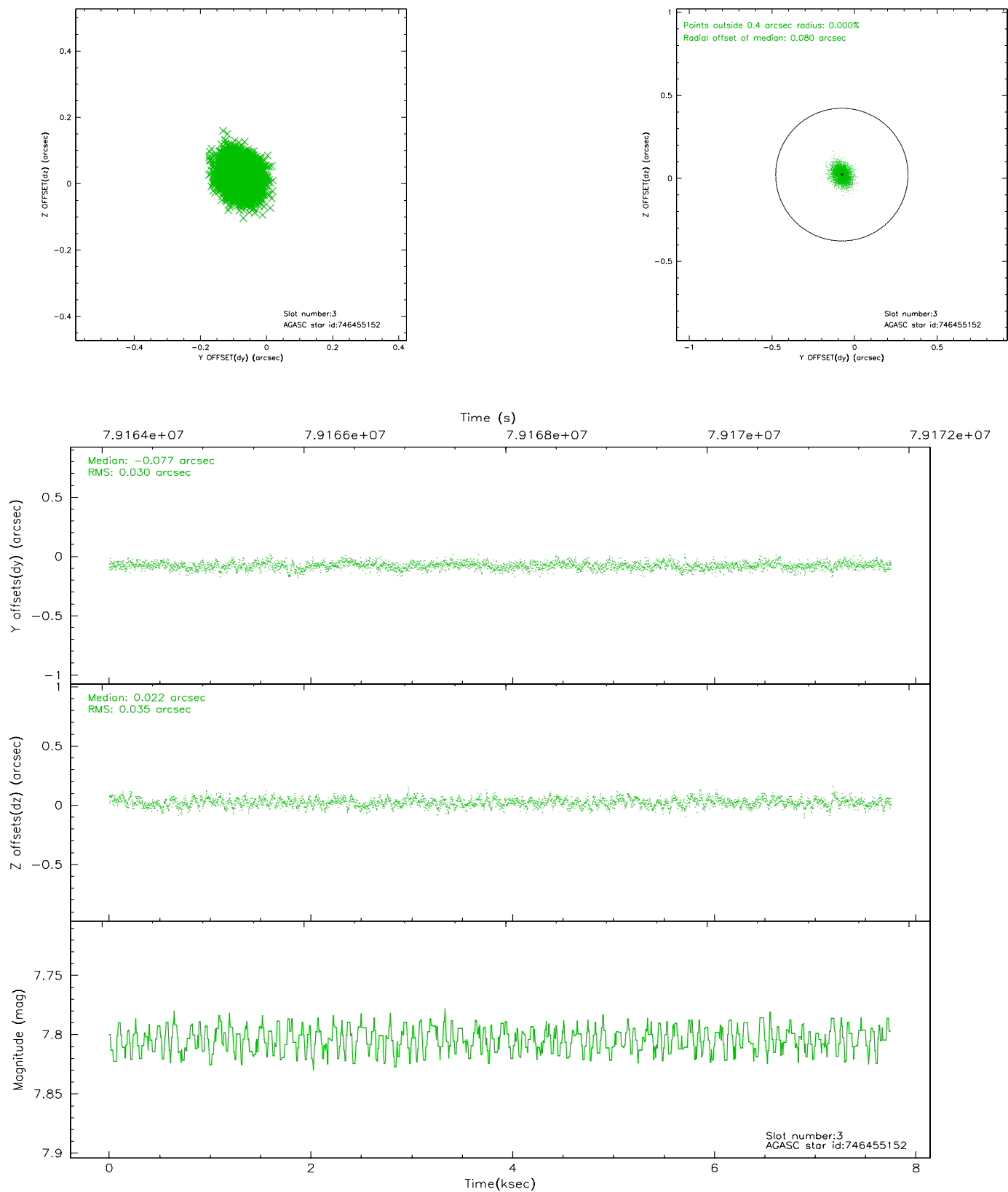


Slot Statistics

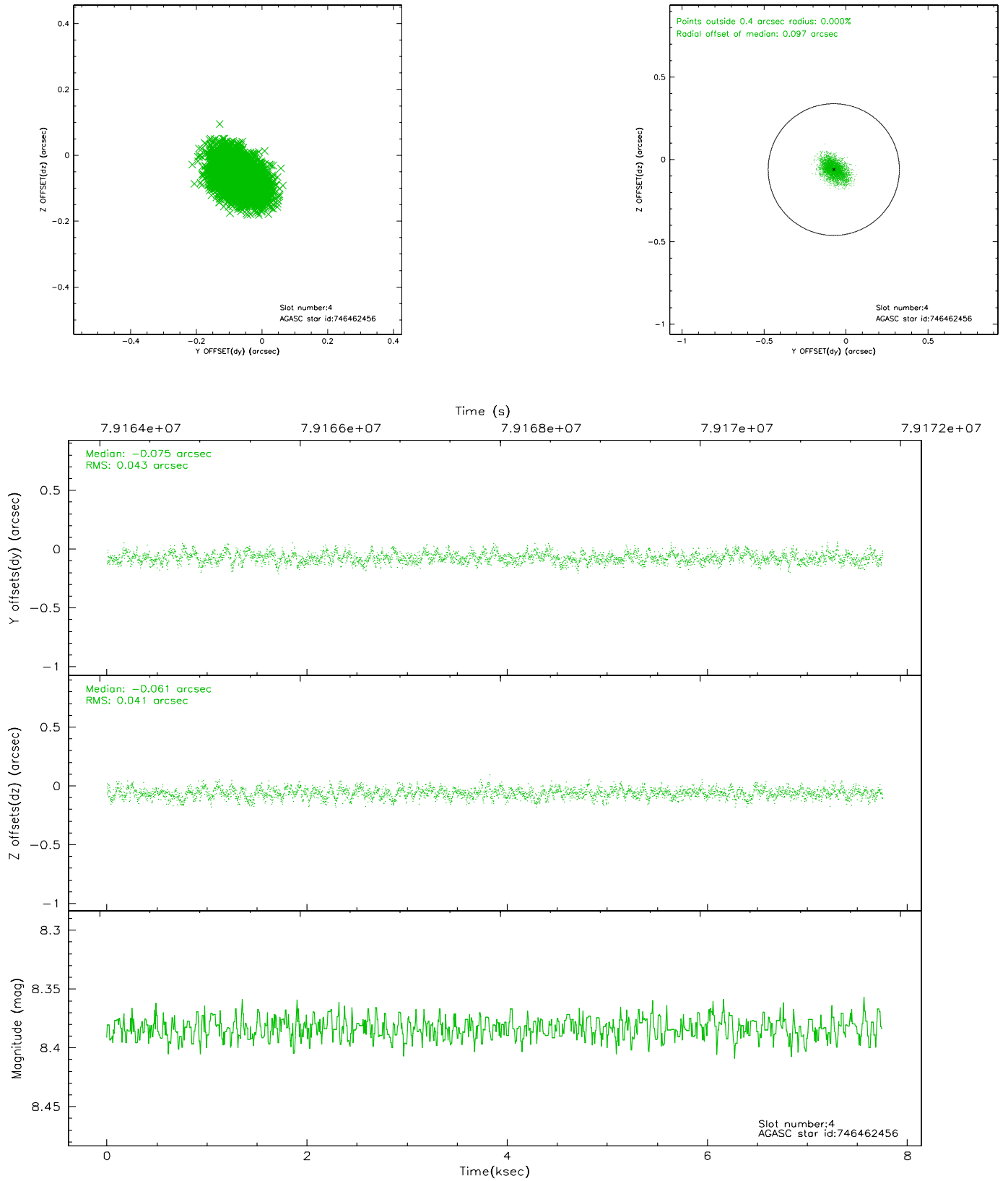
slot	status	id	mag	n_pts	med_dy	med_dz	dr1	dr2	ra	dec	mean_y	mean_z
0	FID	ACIS-S-2	7.15	1891	0.089	0.119	0.007	0.011	0.000000	0.000000	-753.50	-1544.26
1	FID	ACIS-S-4	7.24	1891	-0.075	-0.075	0.006	0.010	0.000000	0.000000	2159.42	363.17
2	FID	ACIS-S-5	7.23	1891	-0.046	-0.035	0.007	0.011	0.000000	0.000000	-1805.40	358.00
3	GUIDE	746455152	7.80	3781	-0.077	0.022	0.049	0.081	278.447893	-9.976732	-1095.46	-1776.49
4	GUIDE	746462456	8.38	3781	-0.075	-0.061	0.062	0.104	278.652171	-10.530173	-888.72	332.66
5	GUIDE	746455112	8.93	3780	0.217	-0.091	0.067	0.111	278.266531	-10.703234	611.38	306.72
6	GUIDE	746460328	9.80	3779	-0.013	0.040	0.102	0.161	278.603974	-9.898096	-1716.68	-1792.96
7	GUIDE	746995400	9.70	3776	-0.052	0.089	0.100	0.162	278.078957	-11.289885	2118.36	1927.36

2.4 Star Slots

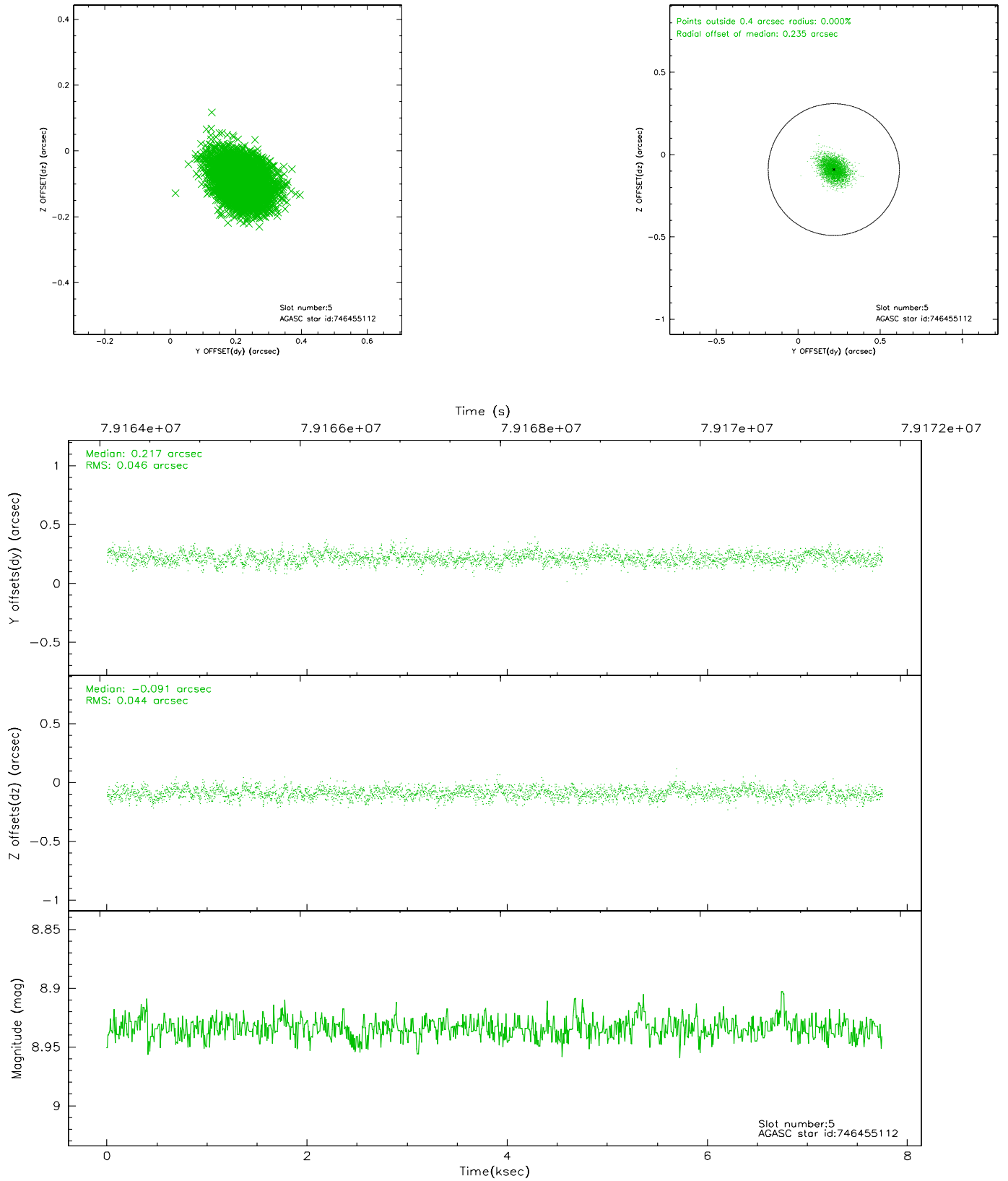
2.4.1 Slot 3



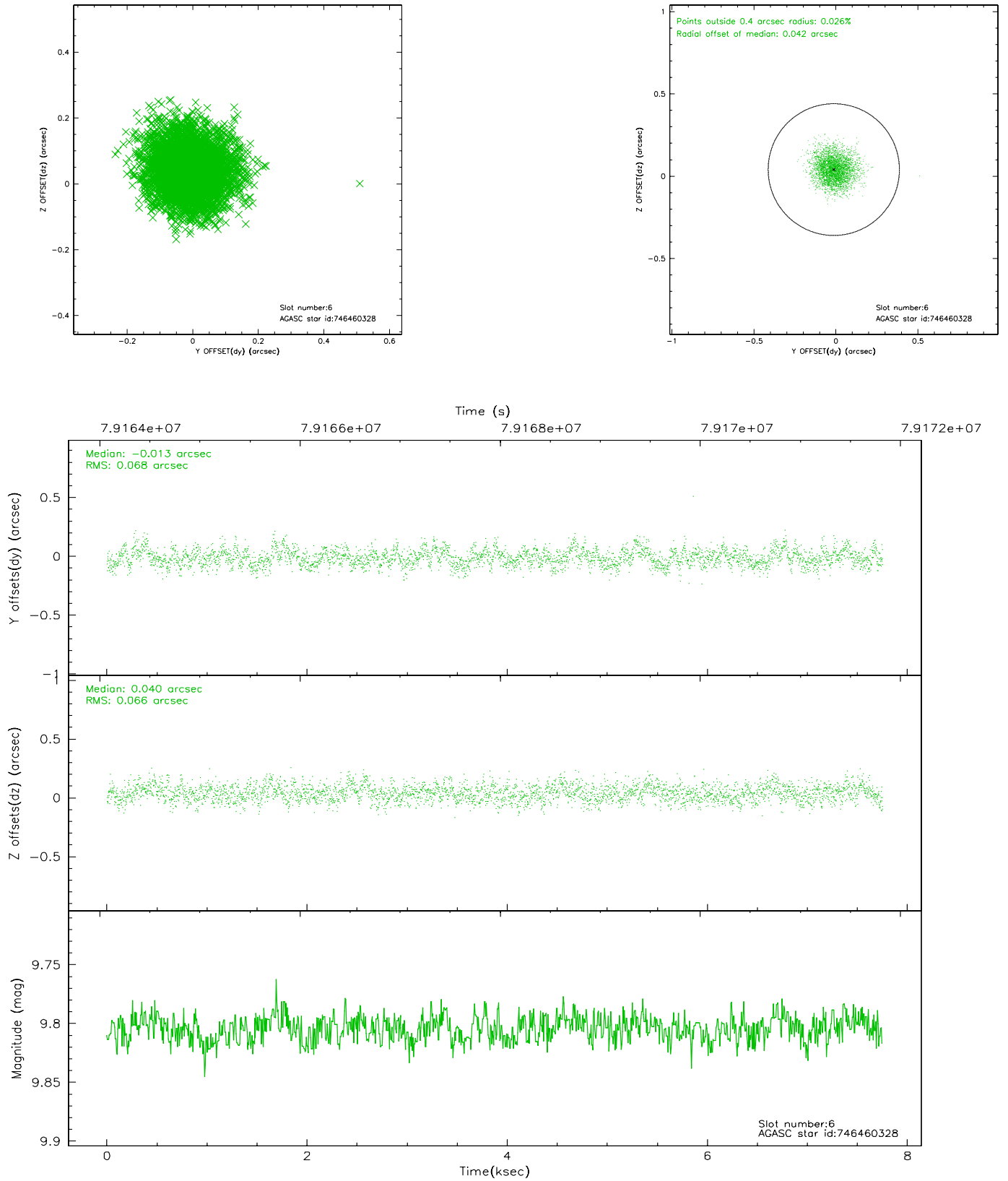
2.4.2 Slot 4



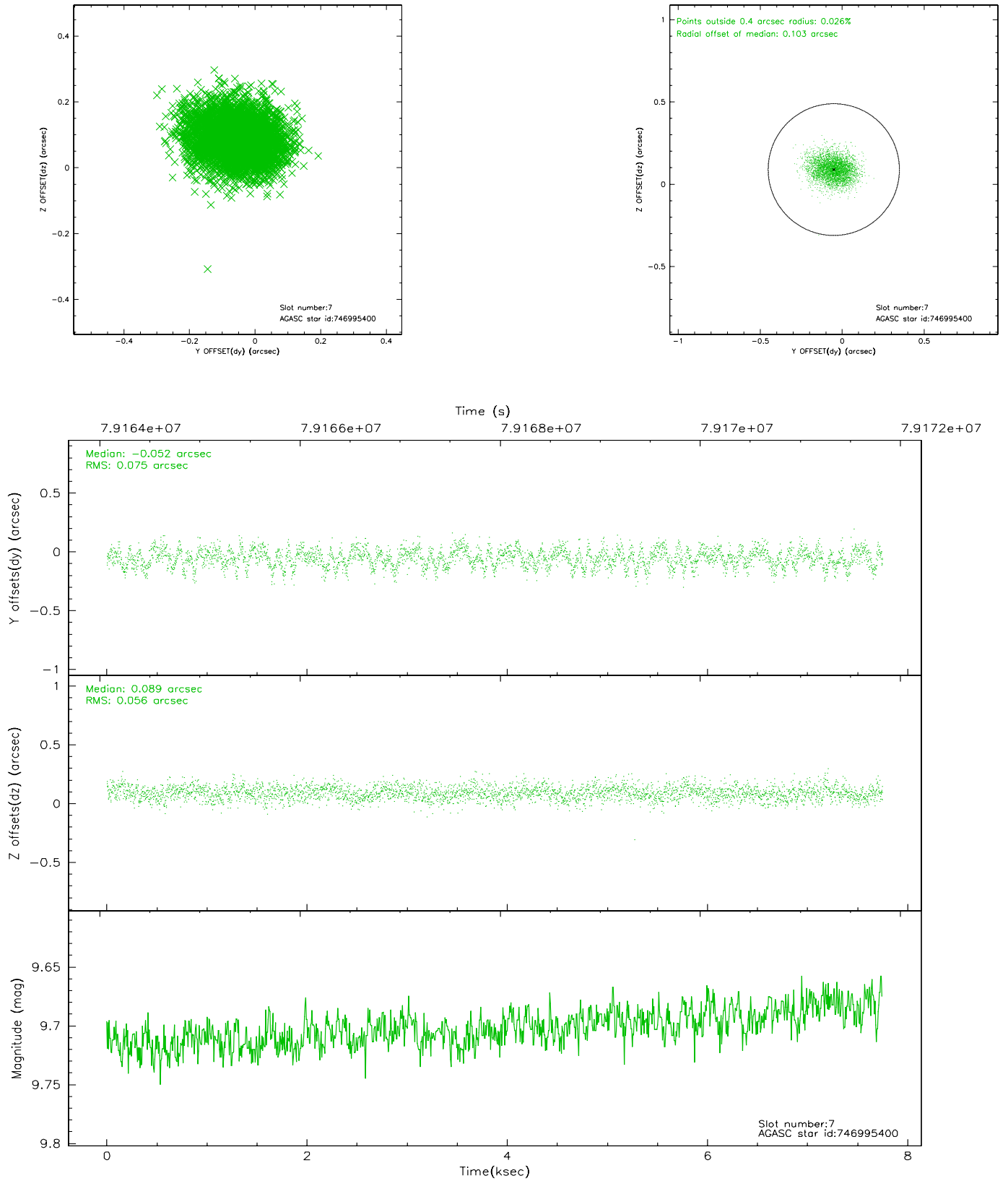
2.4.3 Slot 5



2.4.4 Slot 6

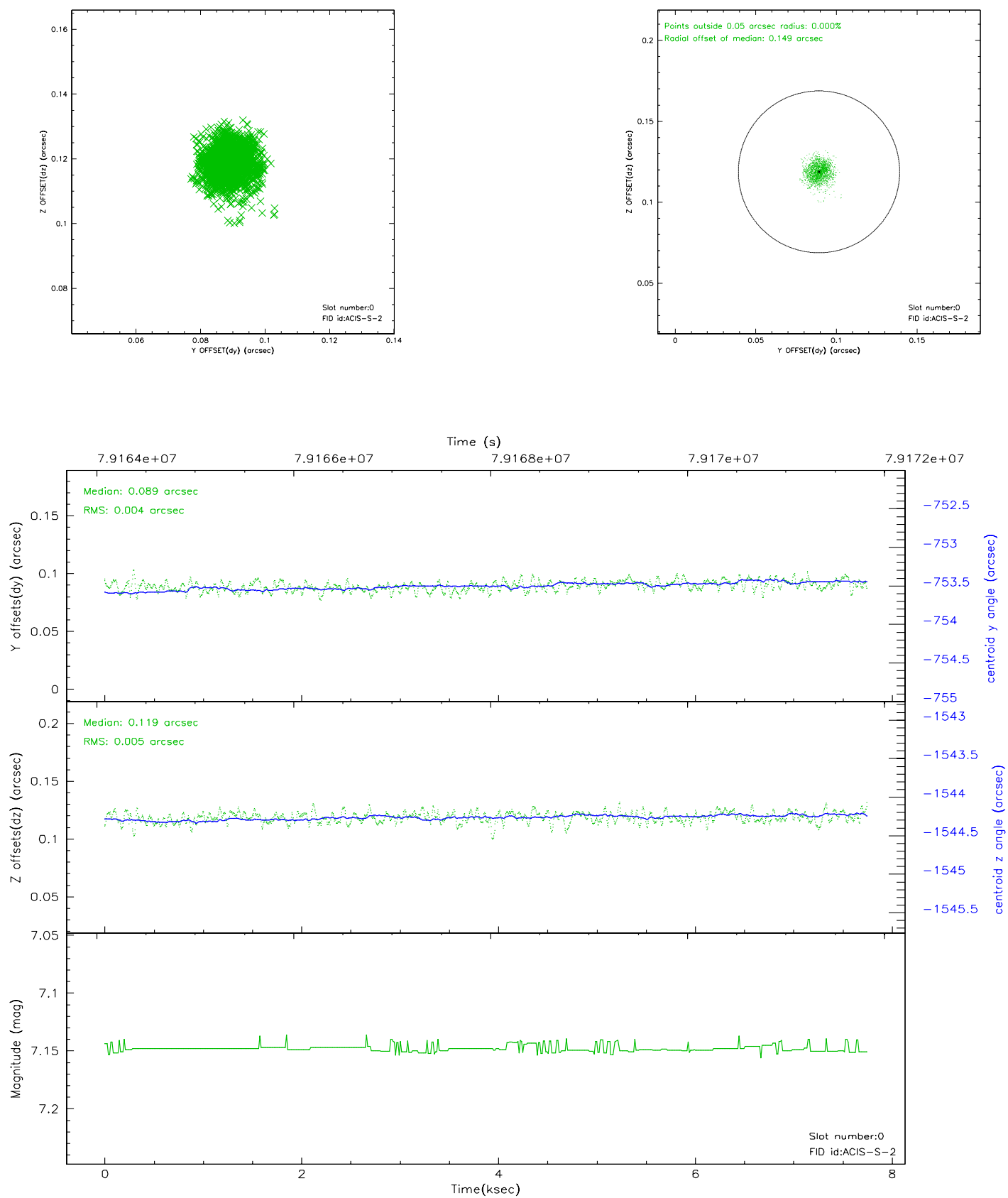


2.4.5 Slot 7

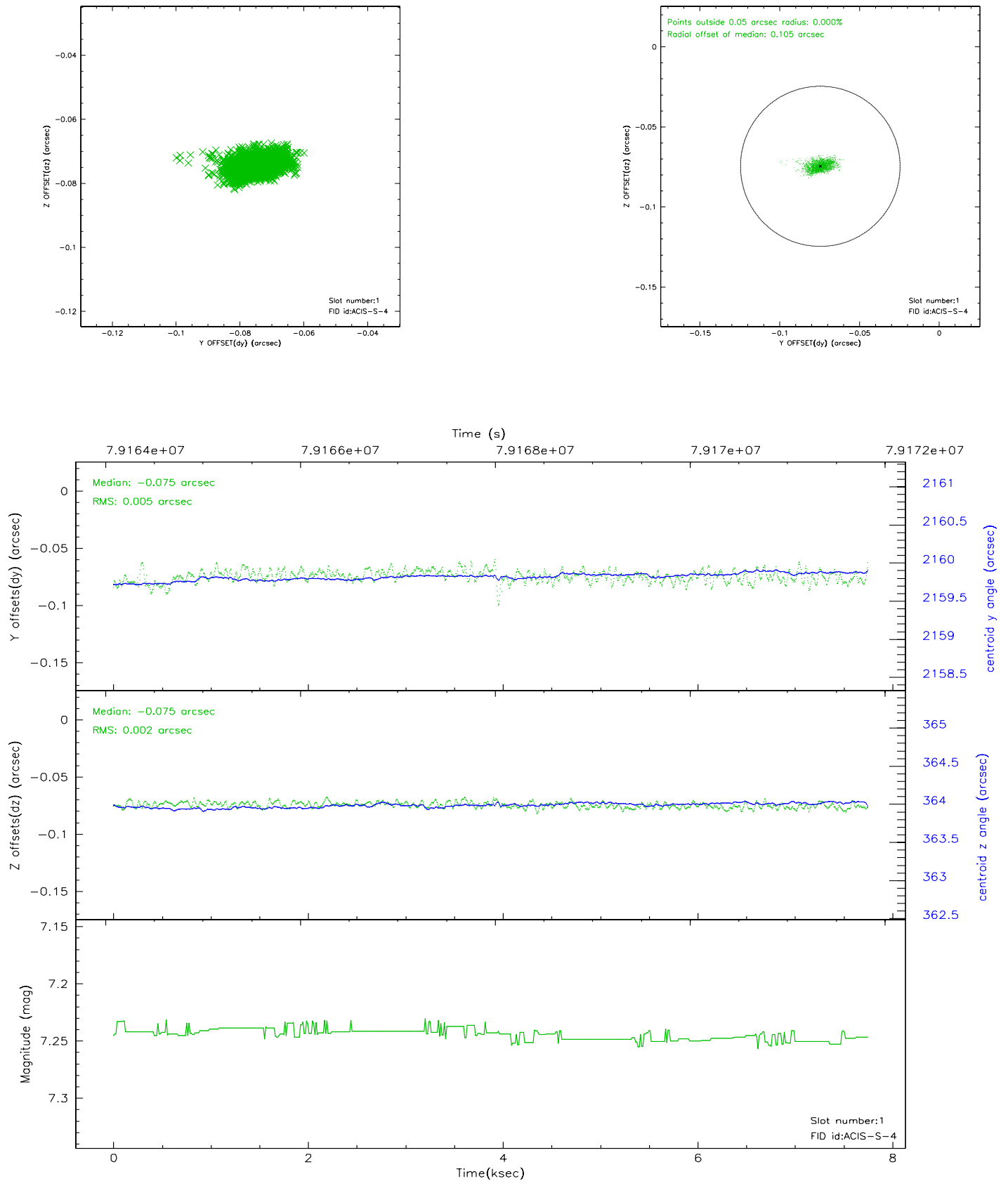


2.5 FID Slots

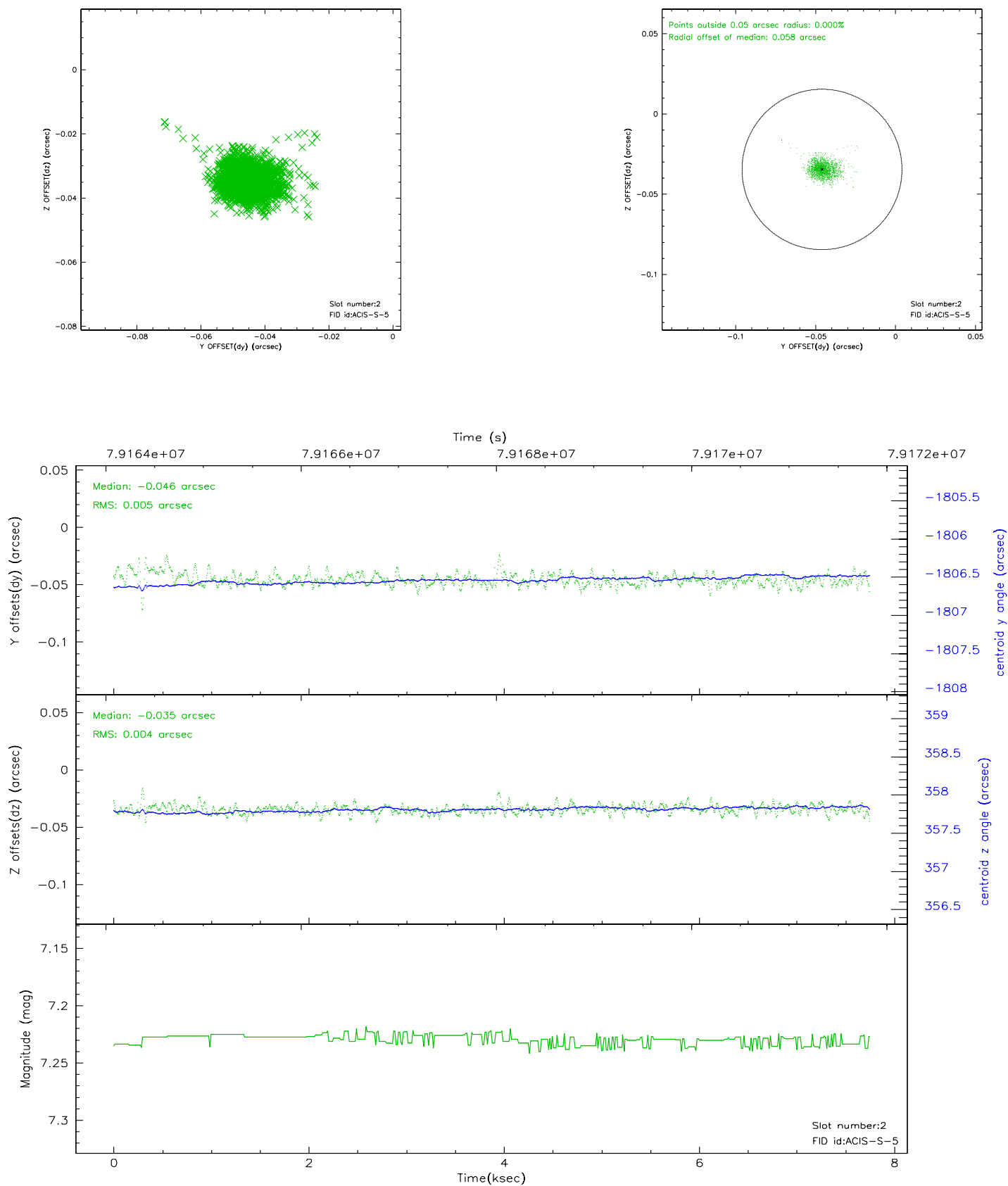
2.5.1 Slot 0



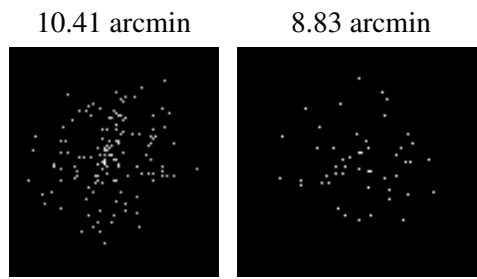
2.5.2 Slot 1



2.5.3 Slot 2



3 Point Sources



A Summary

A.1 Status

V&V Scientist	Joy Nichols
V&V Date (YYYY-MM-DD)	2008.11.20
V&V Edition	2
V&V Disposition and Status	OK
V&V Charge Time	7.324

A.2 Comments

Charge time for this ObsId remains at original value of 7.324 ks, although with the current processing the charge time would have been 7.318 ksec.=====

This calibration observation was acquired with the focal plane temperature raised from -120C to -110C, for attempted recalibration of ACIS for the 1999-09-16 through 2000-01-28 period.
=====

This reprocessing of the data applies no CTI correction because none is available for that temperature.
=====

Focal plane temperature is warmer than -118.7 C degrees during the entire observation. This temperature is the upper limit of the verified ACIS calibration for the front-illuminated chips. The focal plane temperature is warmer than -116.7 degrees C for approximately the entire observation. This temperature is the upper limit of the verified ACIS calibration for the back-illuminated chips. The ACIS spectral response calibration is less accurate at these warmer temperatures than it is at -119.7 C. Users whose science objectives depend on the most accurate spectral response (ie: fitting line-rich spectra) may notice an effect. Users whose science objectives do not depend on the most accurate spectral response should not notice an effect.