

V&V Reference Report

L2 ASCDS Version : 8.4.5

Observation 1751 - L2 Version 4
Chandra X-Ray Center

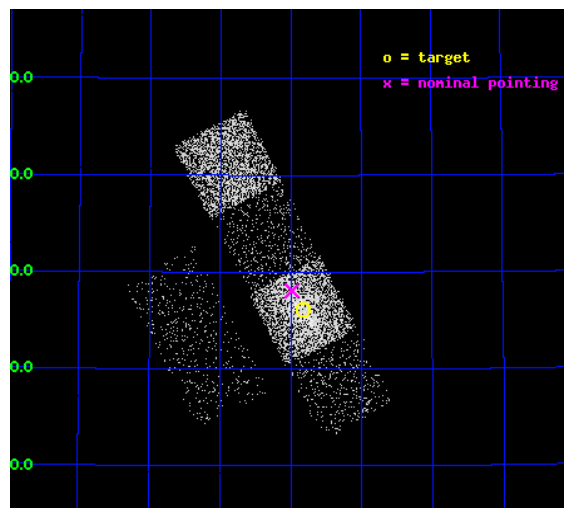
L2 Processing Date : Aug 30 2012

Contents

1	Front	2
2	OBI	3
2.1	OBI	3
2.1.1	Images	3
2.1.2	Bias	3
2.1.3	Parameters	4
2.1.4	Events	4
2.2	Compared Parameters	5
2.3	Aspect	6
2.4	Star Slots	9
2.4.1	Slot 3	9
2.4.2	Slot 4	10
2.4.3	Slot 5	11
2.4.4	Slot 6	12
2.4.5	Slot 7	13
2.5	FID Slots	14
2.5.1	Slot 0	14
2.5.2	Slot 1	15
2.5.3	Slot 2	16
A	Summary	17
A.1	Status	17
A.2	Comments	17

1 Front

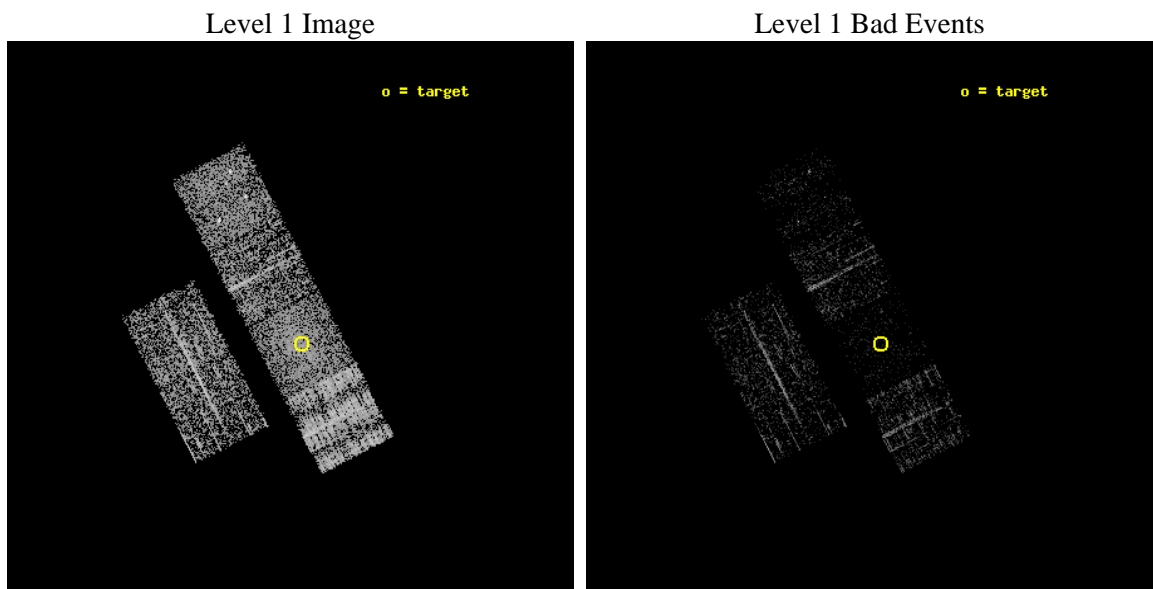
seq_num	100002	Sequence number
obs_id	1751	Observation id
title	AXAF LOW ENERGY SPECTROSCOPY AND PHOTOMETRIC IMAGING OF COMETARY X-RAY EMISSION FROM COMET P/TEMPEL 2	Proposal title
observer	Dr. Carey Lisse	Principal investigator
object	LINEAR 1999 S4	Source name
dtcycle	0	
cycle	P	events from which exps? Prim/Second/Both
ra_targ	65.9572	Observer's specified target RA [deg]
dec_targ	60.43589	Observer's specified target Dec [deg]
ra_nom	65.995912058936	Nominal RA [deg]
dec_nom	60.467997158564	Nominal Dec [deg]
roll_nom	62.568741612763	Nominal Roll [deg]
revision	4	Processing version of data
ontime	1190.4000010937	Sum of GTIs [s]
livetime	1175.3264395071	Livetime [s]
ontime2	1190.4000010937	Sum of GTIs [s]
ontime3	1190.4000010937	Sum of GTIs [s]
ontime5	1190.4000010937	Sum of GTIs [s]
ontime6	1190.4000010937	Sum of GTIs [s]
ontime7	1190.4000010937	Sum of GTIs [s]
ontime8	1190.4000010937	Sum of GTIs [s]
l2events	8383	Number of level 2 events



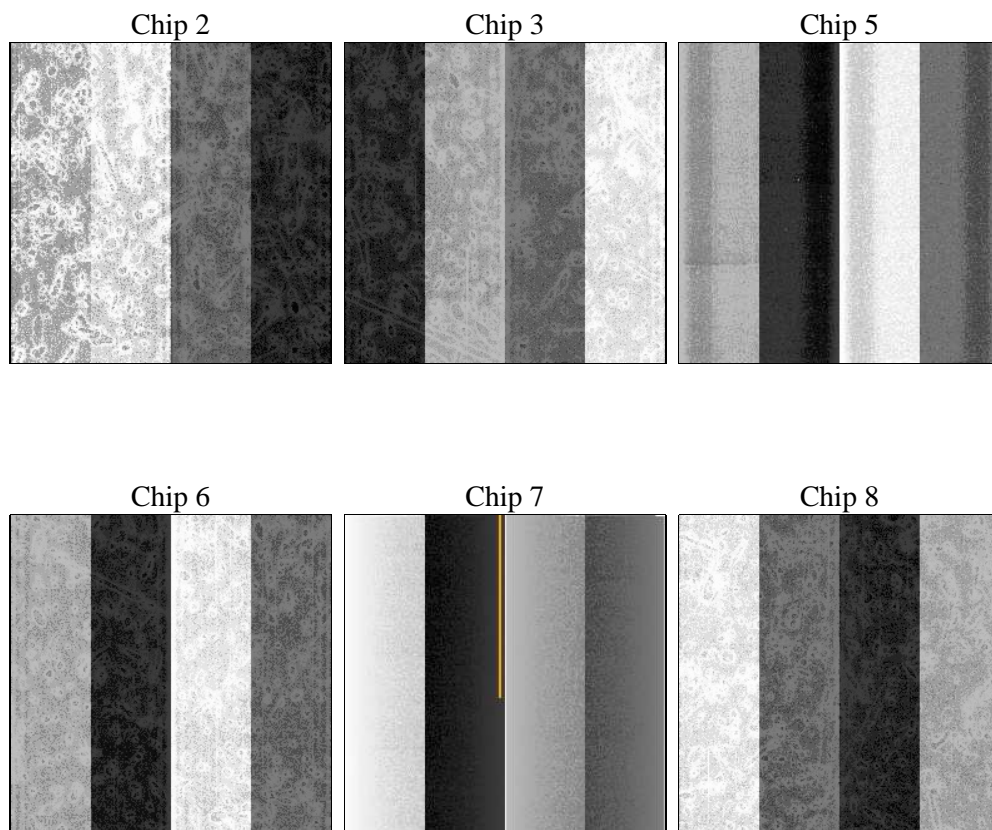
2 OBI

2.1 OBI

2.1.1 Images



2.1.2 Bias



2.1.3 Parameters

obi_num	0	Obi number	sched_exp_time	1000.000000	[s] Scheduled observation exposure time
ascdsver	8.4.5	Processing system revision	ontime	1190.4000010937	Sum of GTIs [s]
caldsver	4.5.1.1	 	ontime2	1190.4000010937	Sum of GTIs [s]
date	2012-08-30T04:07:46	Date and time of file creation	ontime3	1190.4000010937	Sum of GTIs [s]
revision	4	Processing version of data	ontime5	1190.4000010937	Sum of GTIs [s]
			ontime6	1190.4000010937	Sum of GTIs [s]
			ontime7	1190.4000010937	Sum of GTIs [s]
			ontime8	1190.4000010937	Sum of GTIs [s]
			l1events	47062	Number of level 1 events

2.1.4 Events

	ccd 2	ccd 3	ccd 5	ccd 6	ccd 7	ccd 8
level 1 events	6535	6068	6220	6672	6156	15411
rejected events	5924	5770	2567	5986	2101	7765
rejected %	90%	95%	41%	89%	34%	50%

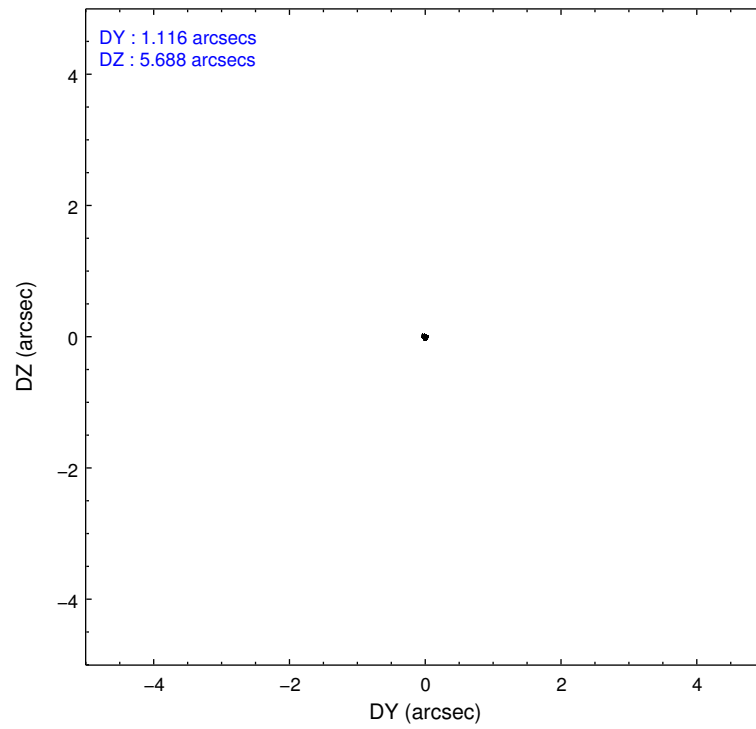
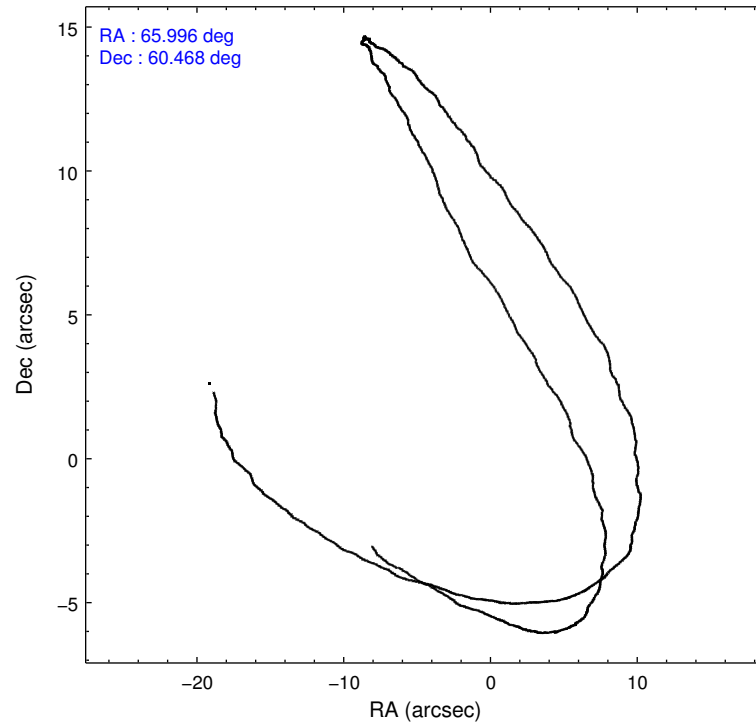
	ccd 2	ccd 3	ccd 5	ccd 6	ccd 7	ccd 8
grade 0 events	477	259	2055	734	2030	3892
	7%	4%	33%	11%	32%	25%
grade 1 events	5	4	14	11	8	36
	0%	0%	0%	0%	0%	0%
grade 2 events	131	58	1518	130	1496	916
	2%	0%	24%	1%	24%	5%
grade 3 events	54	20	461	40	685	1948
	0%	0%	7%	0%	11%	12%
grade 4 events	68	21	479	43	654	1744
	1%	0%	7%	0%	10%	11%
grade 5 events	11	7	184	6	81	100
	0%	0%	2%	0%	1%	0%
grade 6 events	26	32	646	18	945	1374
	0%	0%	10%	0%	15%	8%
grade 7 events	5763	5667	863	5690	257	5401
	88%	93%	13%	85%	4%	35%

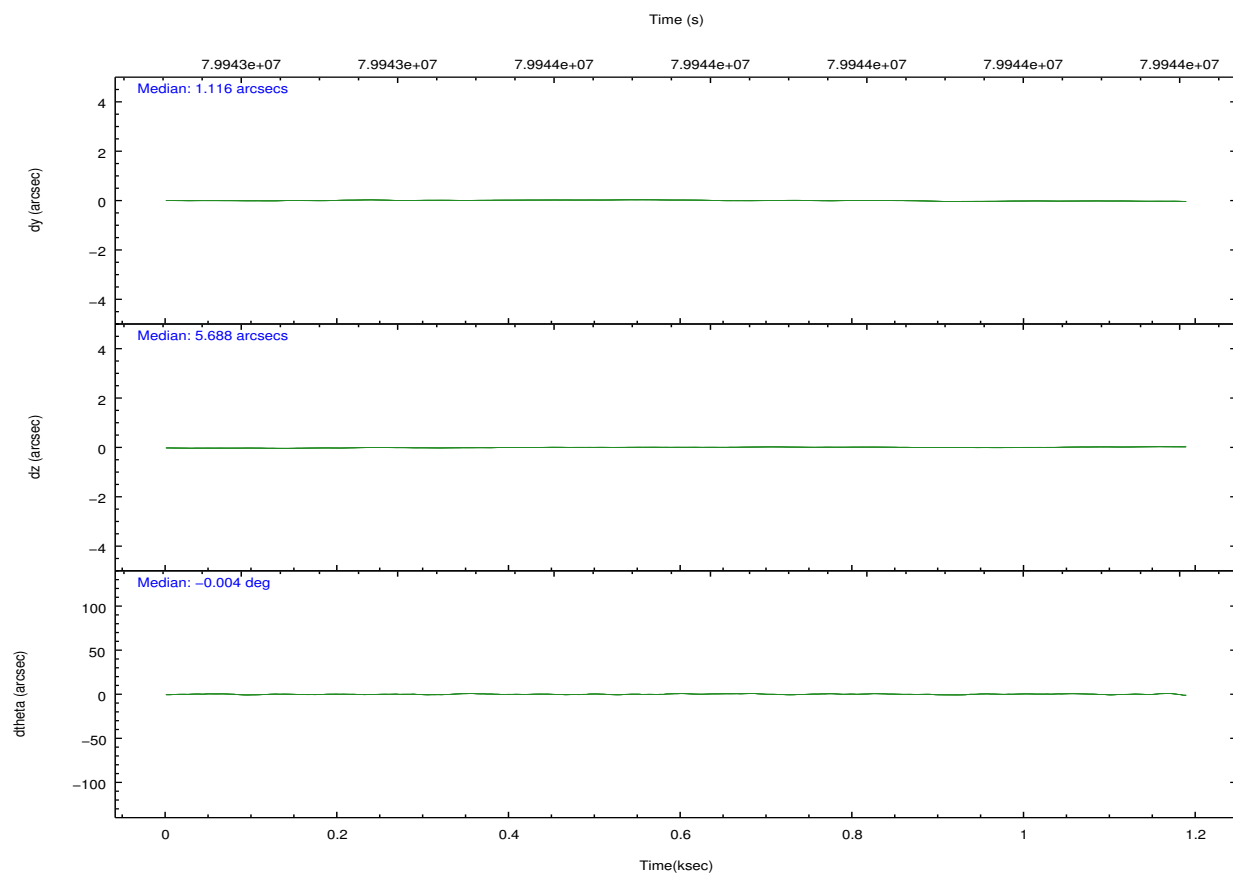
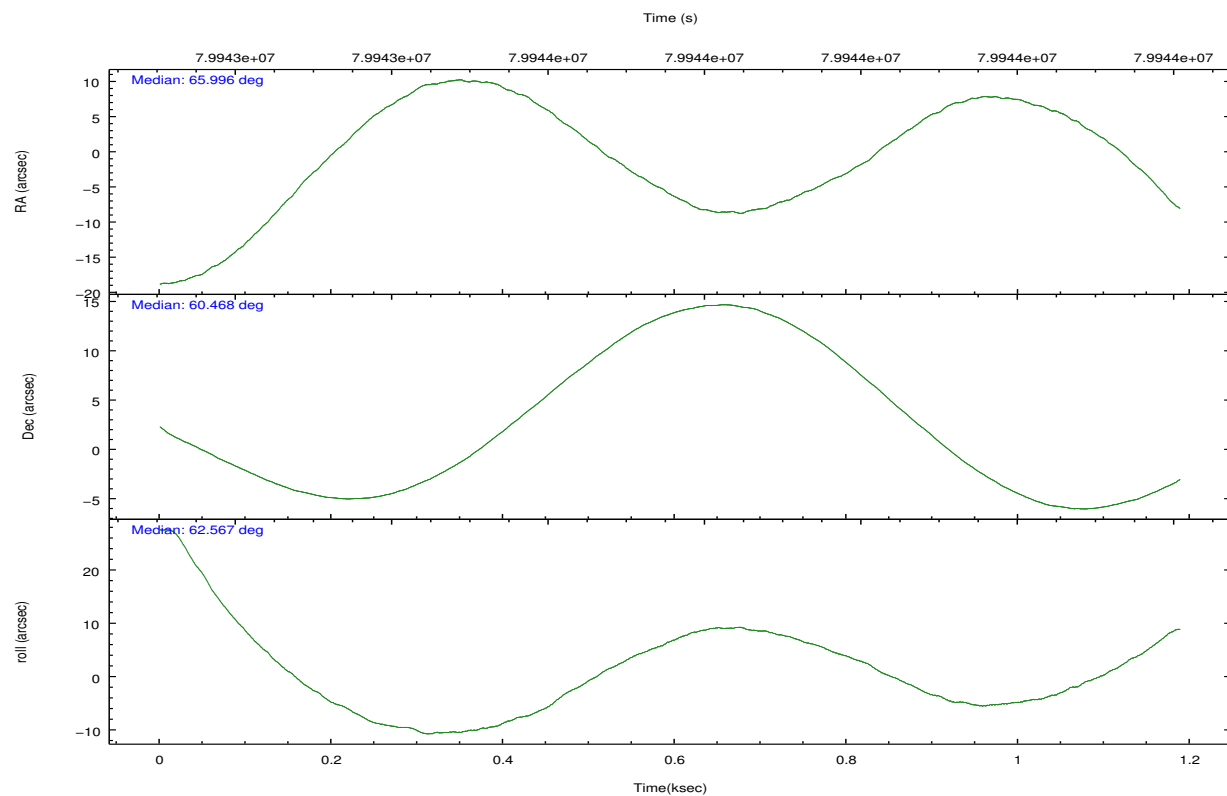
2.2 Compared Parameters

Parameter	Planned	Actual
Instrument	ACIS	ACIS
Detector	ACIS-235678	ACIS-235678
Grating	NONE	NONE
Data mode	VFAINT	VFAINT
Observation mode	POINTING	POINTING
[deg] Pointing RA	65.998474	65.99591205893604
[deg] Pointing Dec	60.441057	60.46799715856435
[deg] Pointing Roll	62.409884	62.56874161276313
[mm] SIM focus pos	-0.684267	-0.6828225247311905
[mm] SIM defocus	0	0.001444936568705701
[mm] SIM translation stage pos	-190.132523	-190.1400660498719
[mm] SIM translation stage offset	0	0.00754346686406393
[s] Observation start time (MET)	79943349.184000	79942973.26949599
Observation start date	2000-07-14T06:28:05	2000-07-14T06:22:53
[s] Observation end time (MET)	79944349.184000	79944483.094552
Observation end date	2000-07-14T06:44:45	2000-07-14T06:48:03
Read mode	TIMED	TIMED

Parameter	Planned	Actual
Obspar format version number	7	7
Obspar file type	PREDICTED	ACTUAL
Obspar update status	NONE	UPDATED
Number of optional ACIS chips dropped	0	0
On-chip summing requested	N	N
Subarray requested	NONE	NONE
Alternating exposures requested	N	N
[s] Primary exposure time	0.000000	3.2

2.3 Aspect



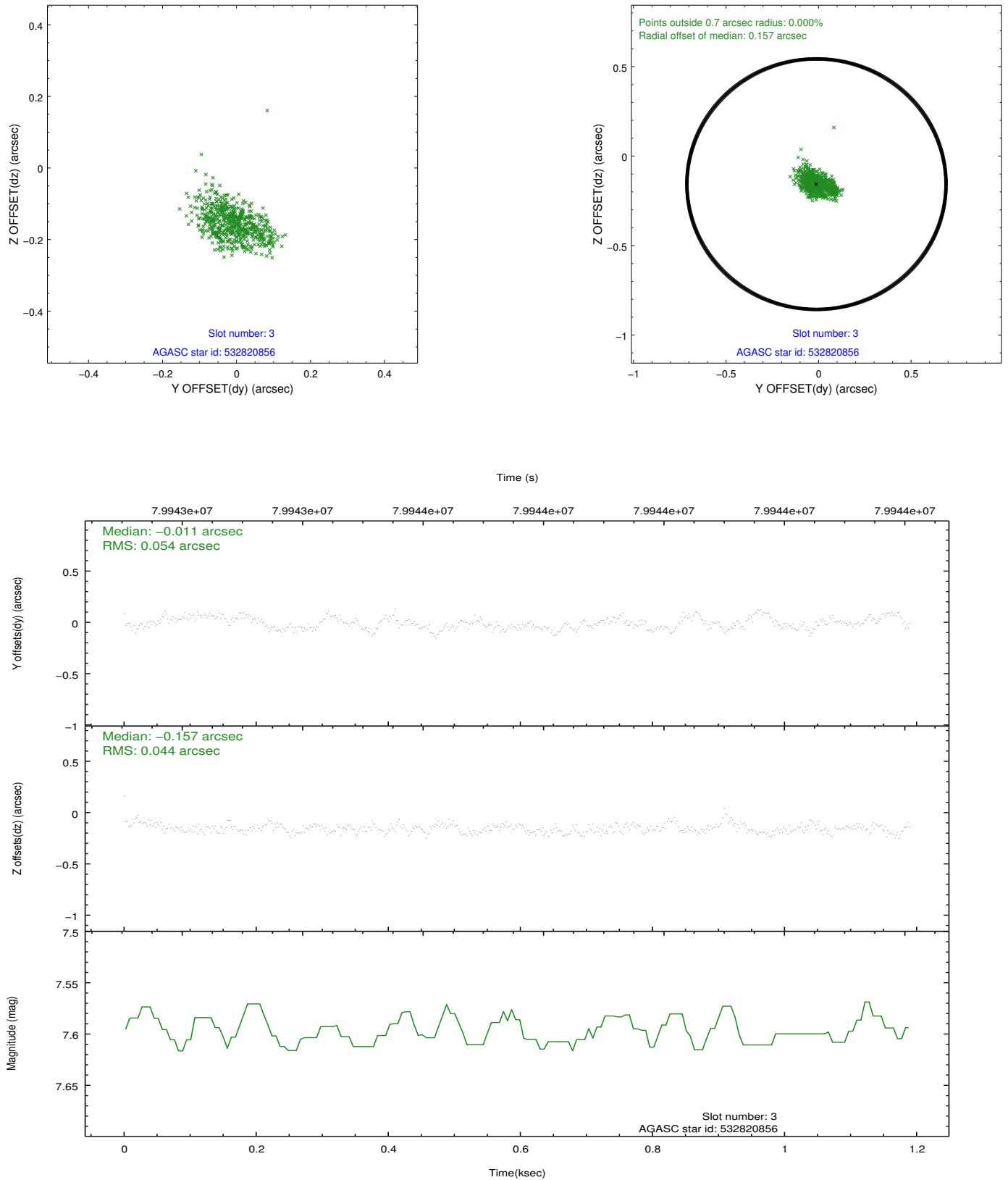


Slot Statistics

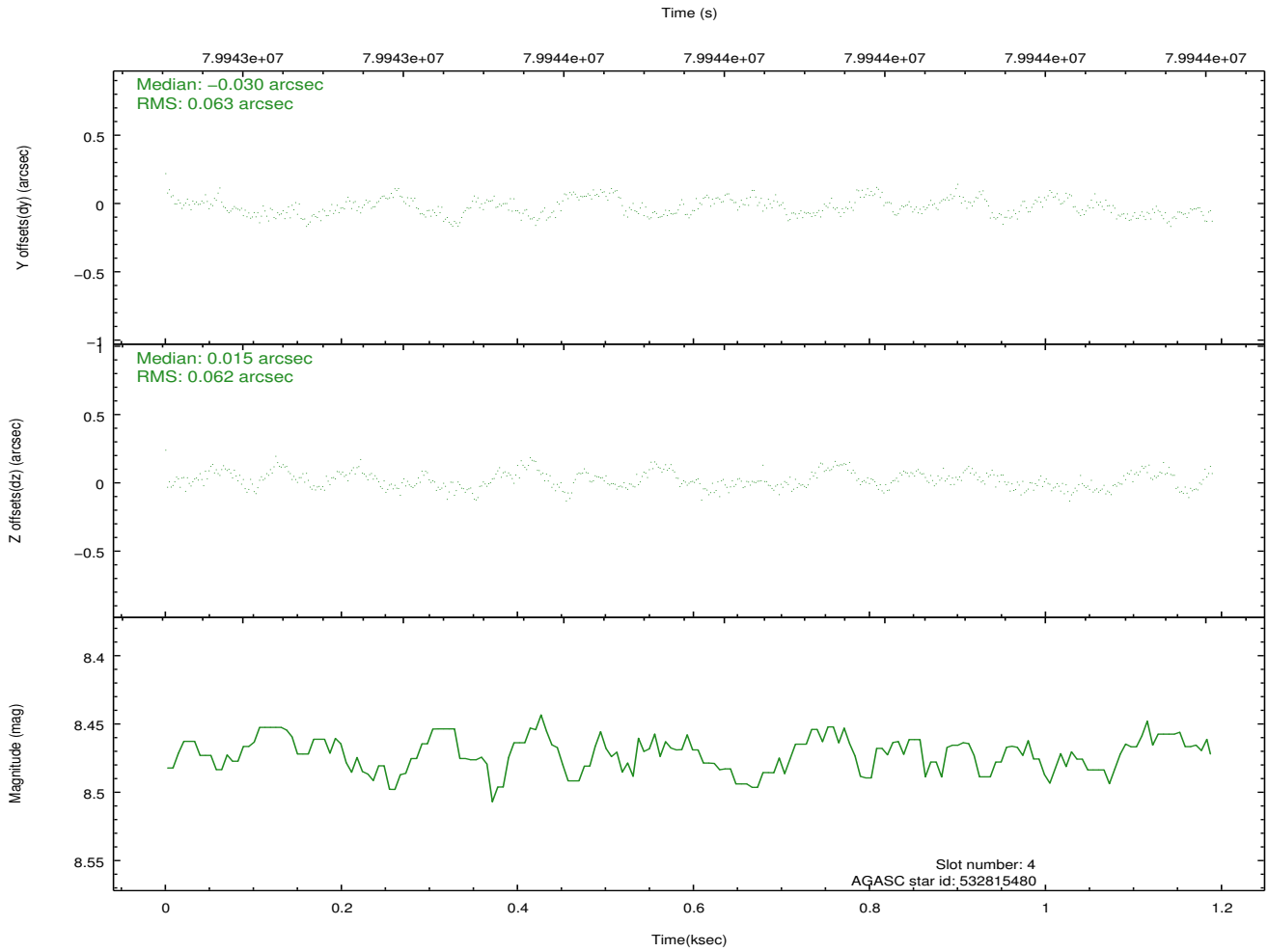
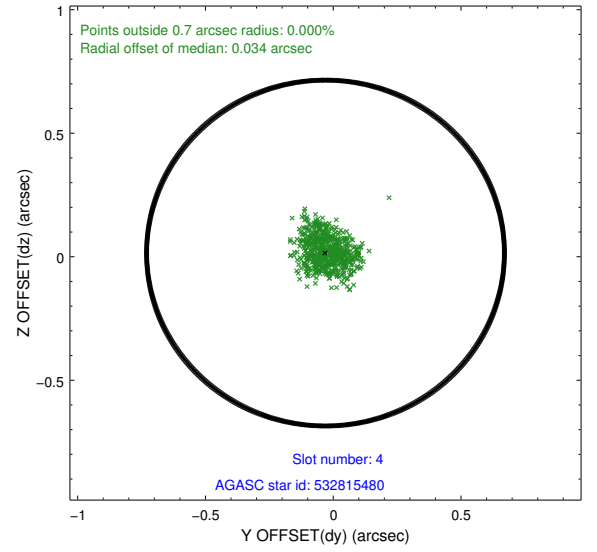
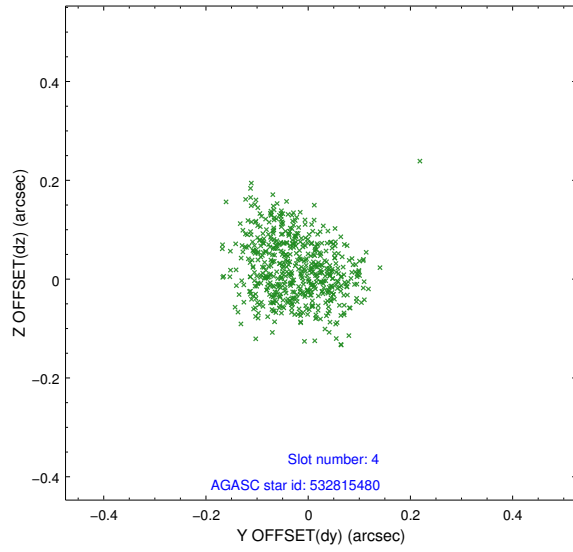
slot	status	id	mag	n_pts	med_dy	med_dz	dr1	dr2	ra	dec	mean_y	mean_z
0	FID	ACIS-S-2	7.11	290	-0.040	0.006	0.008	0.014	0.000000	0.000000	-753.73	-1726.82
1	FID	ACIS-S-4	7.21	290	-0.003	0.018	0.009	0.018	0.000000	0.000000	2157.04	175.91
2	FID	ACIS-S-5	7.23	290	0.011	-0.015	0.007	0.013	0.000000	0.000000	-1799.30	175.90
3	GUIDE	532820856	7.60	581	-0.011	-0.157	0.073	0.119	64.649307	60.493798	-917.50	2219.18
4	GUIDE	532815480	8.47	581	-0.030	0.015	0.094	0.142	65.380825	60.792672	622.69	1554.21
5	GUIDE	532808640	9.51	581	0.108	-0.024	0.081	0.136	65.235766	60.163854	-1508.52	754.83
6	GUIDE	532813176	9.34	581	-0.167	-0.015	0.084	0.134	66.050304	61.096768	2131.61	1014.86
7	GUIDE	489033640	7.80	580	0.090	0.175	0.062	0.105	65.894533	59.732568	-2343.49	-1012.16

2.4 Star Slots

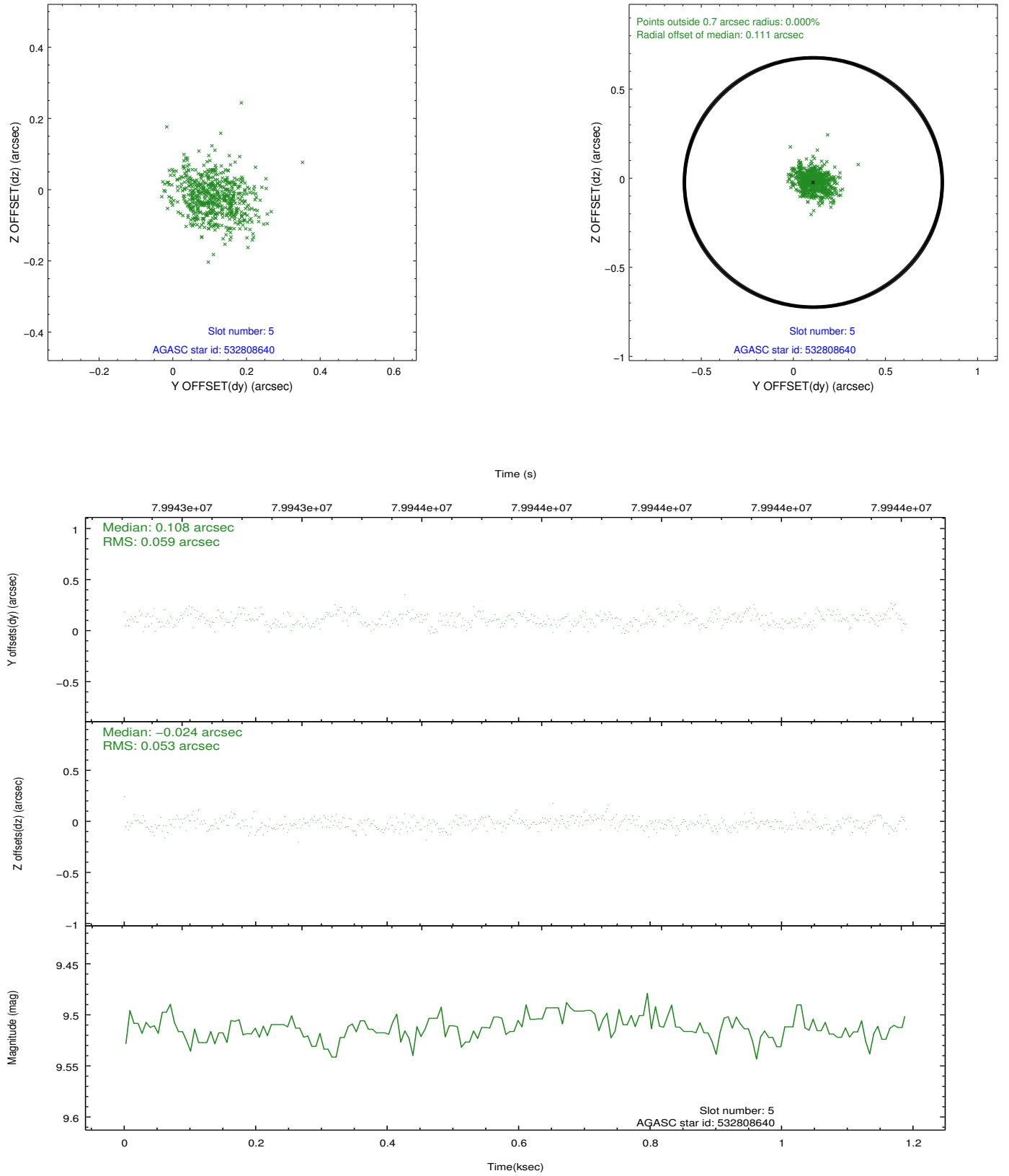
2.4.1 Slot 3



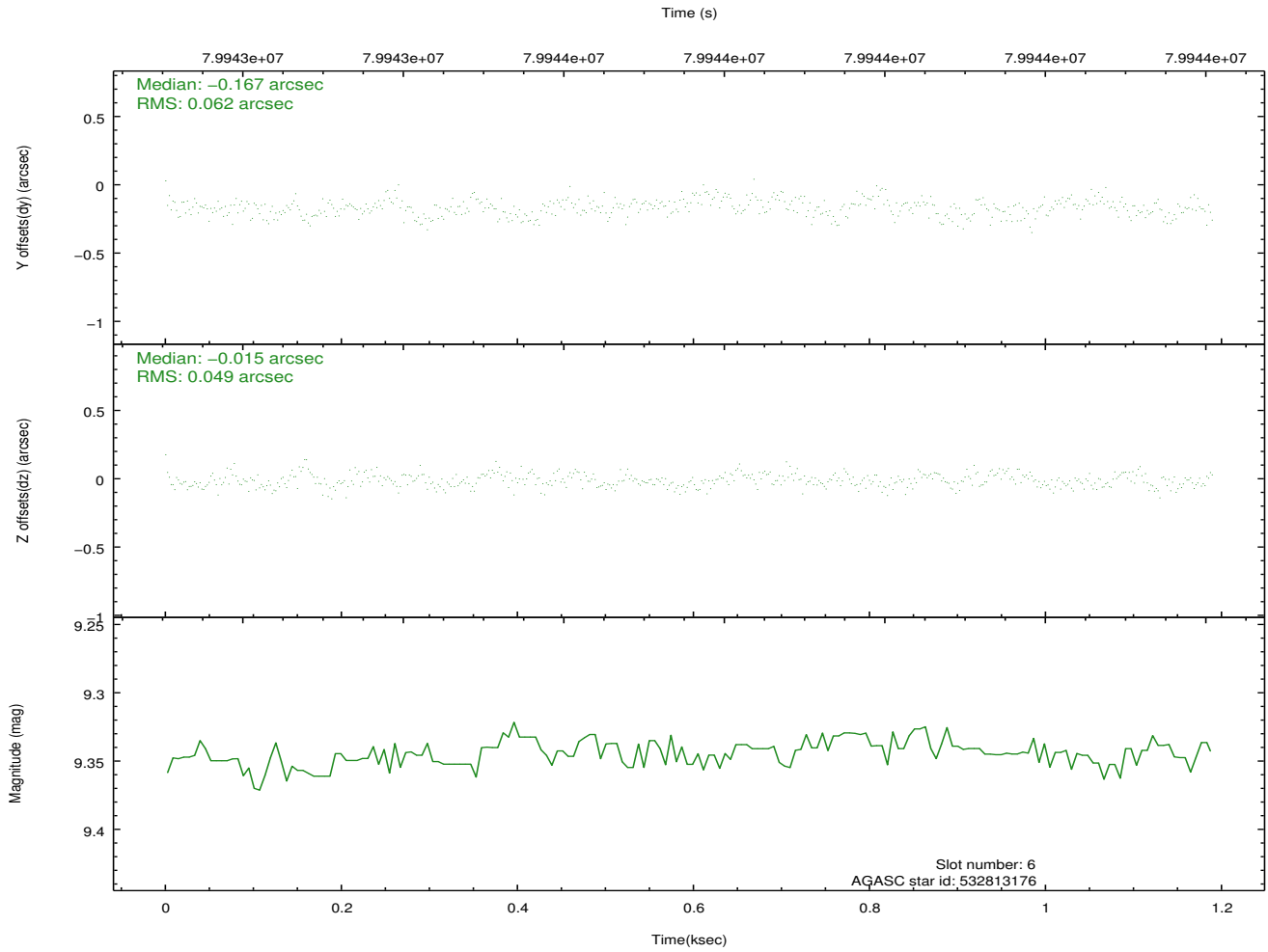
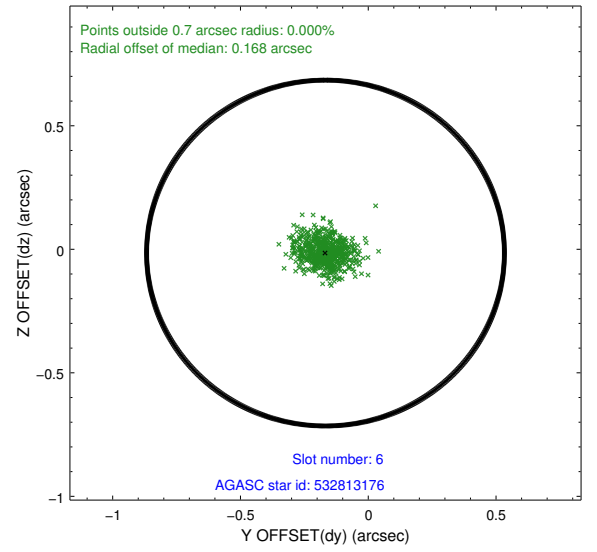
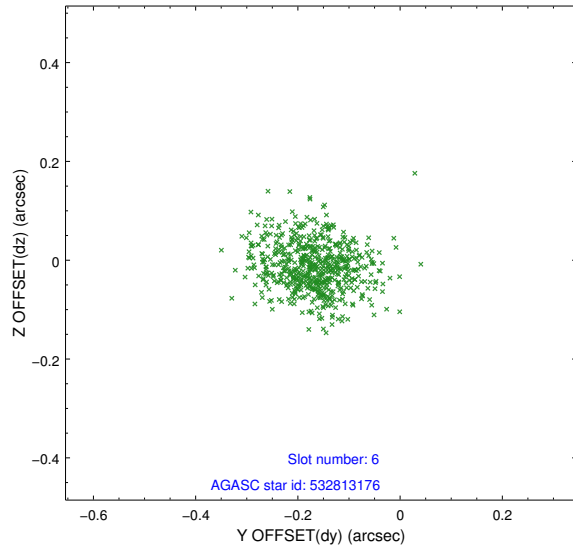
2.4.2 Slot 4



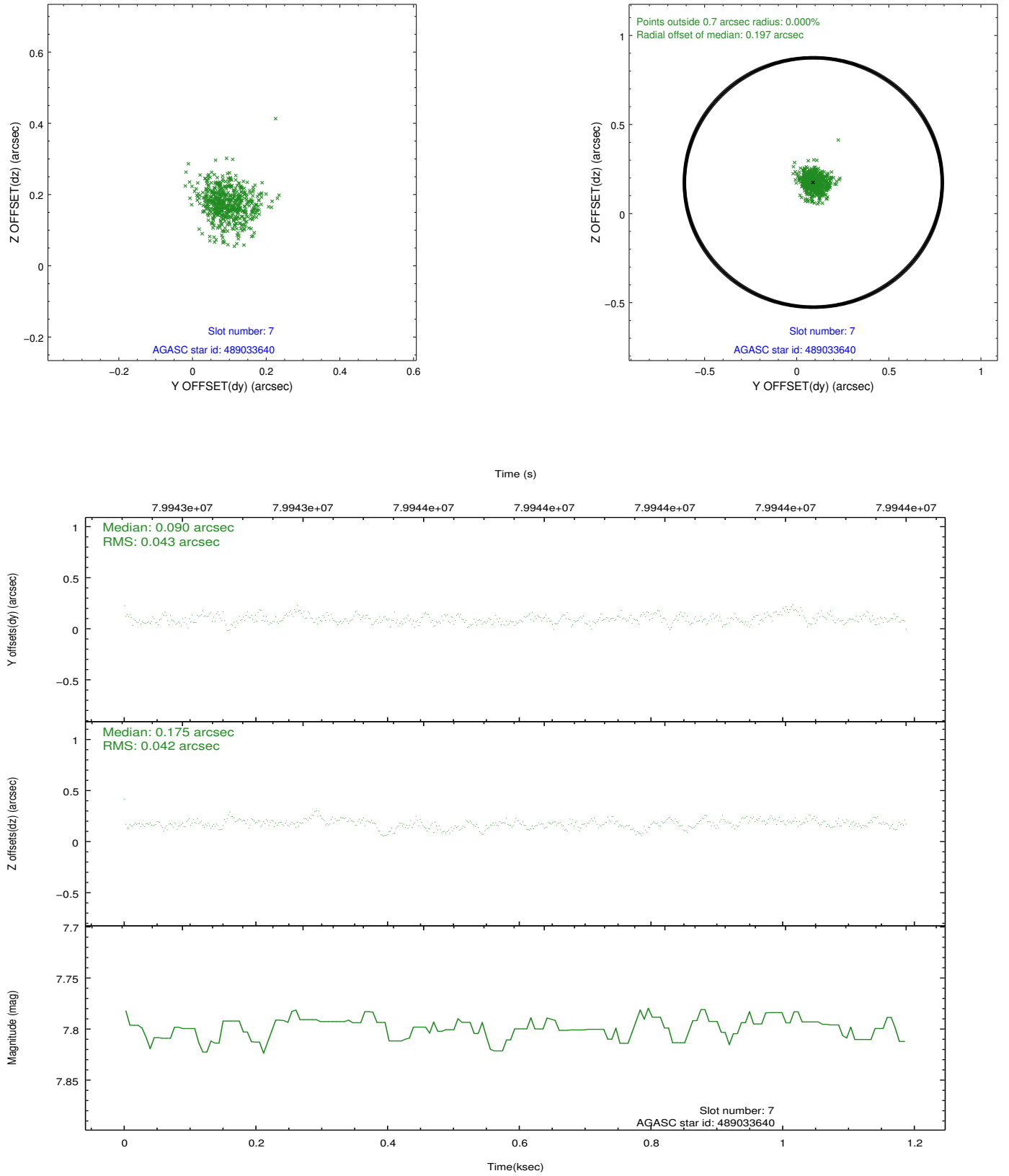
2.4.3 Slot 5



2.4.4 Slot 6

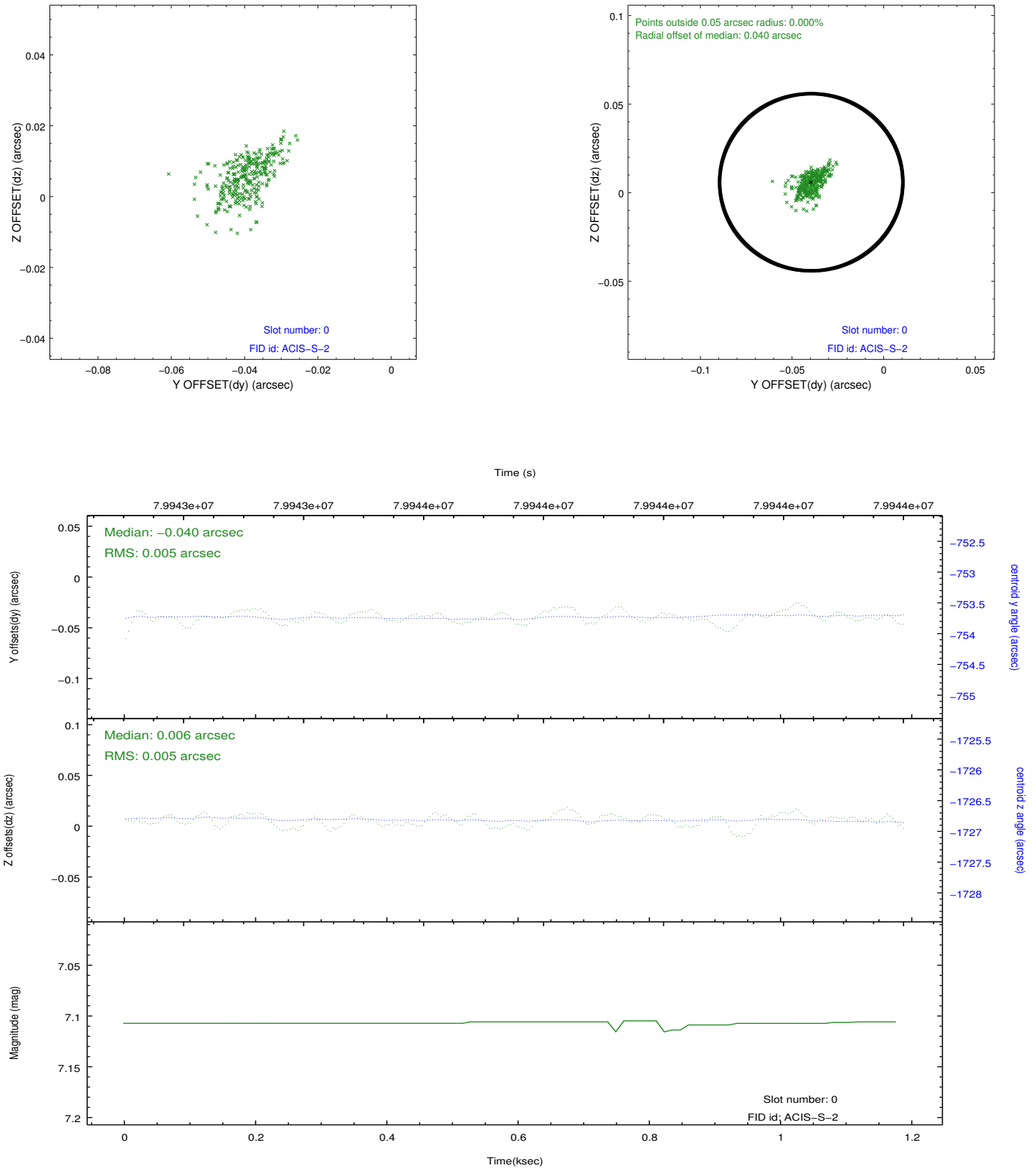


2.4.5 Slot 7

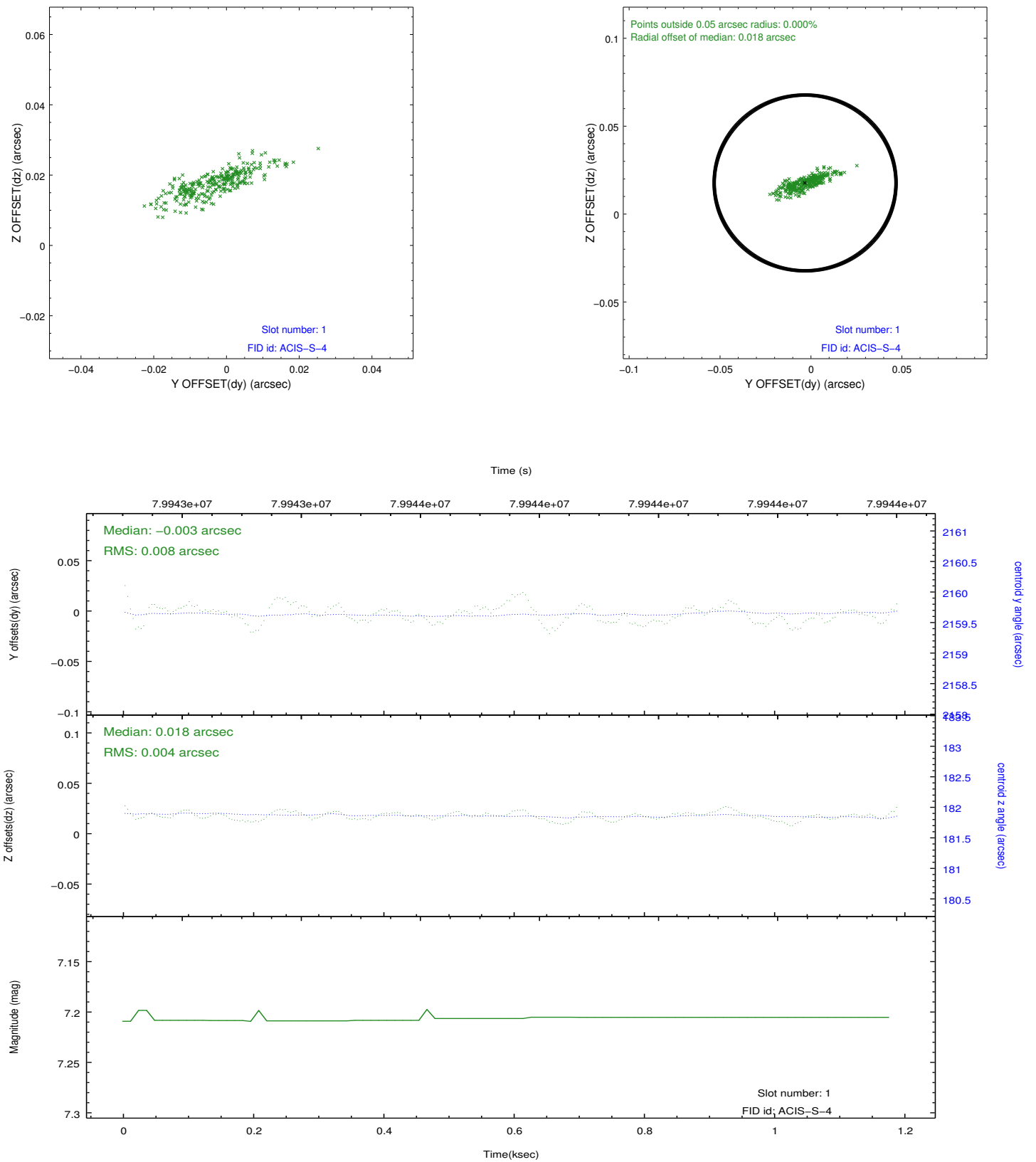


2.5 FID Slots

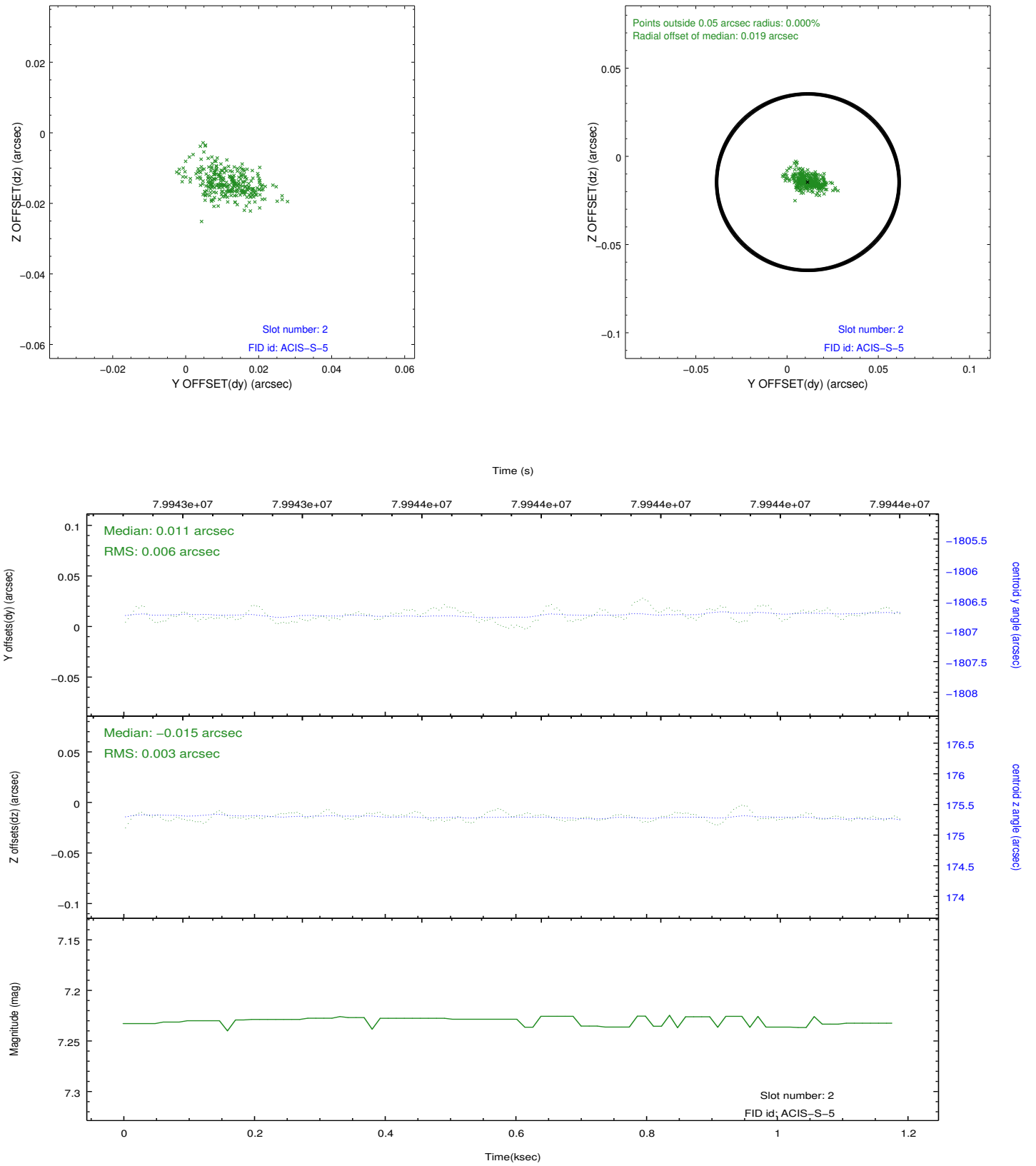
2.5.1 Slot 0



2.5.2 Slot 1



2.5.3 Slot 2



A Summary

A.1 Status

V&V Scientist	Jen Lauer
V&V Date (YYYY-MM-DD)	2012.09.04
V&V Edition	1
V&V Disposition and Status	OK
V&V Charge Time	1.19

A.2 Comments

This is a moving target. Users will need to run `sso_freeze` or similar software to position the events in the reference frame of the comet.