

V&V Reference Report

L2 ASCDS Version : 10.3.3

Observation 17381 - L2 Version 1
Chandra X-Ray Center

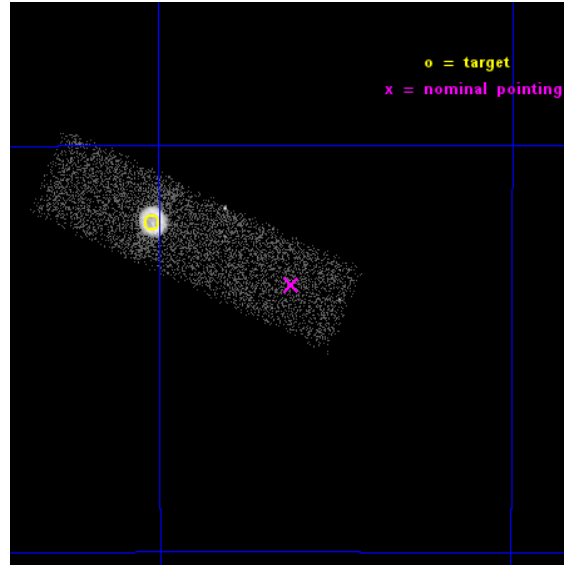
L2 Processing Date : Mar 8 2015

Contents

1	Front	2
2	OBI	3
2.1	OBI	3
2.1.1	Images	3
2.1.2	Bias	3
2.1.3	Parameters	4
2.1.4	Events	4
2.2	Compared Parameters	5
2.3	Aspect	6
2.4	Star Slots	9
2.4.1	Slot 3	9
2.4.2	Slot 4	10
2.4.3	Slot 5	11
2.4.4	Slot 6	12
2.4.5	Slot 7	13
2.5	FID Slots	14
2.5.1	Slot 0	14
2.5.2	Slot 1	15
2.5.3	Slot 2	16
A	Summary	17
A.1	Status	17
A.2	Comments	17

1 Front

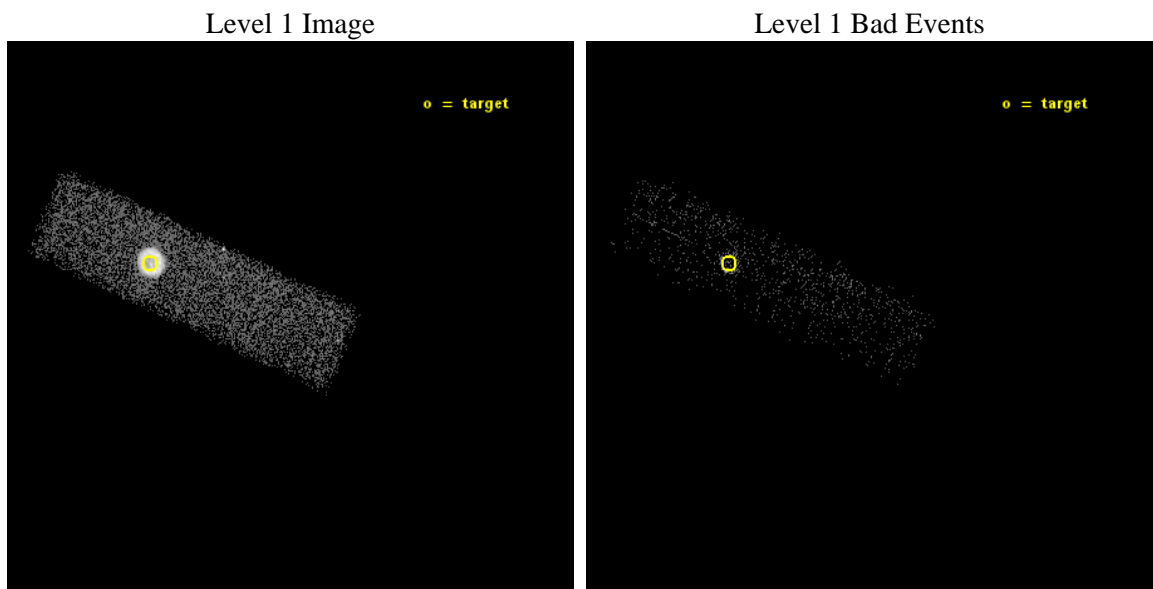
seq_num	590540	Sequence number
obs_id	17381	Observation id
title	AO-16 Calibration Observations of E0102-72	Proposal title
observer	Dr. CXC Calibration	Principal investigator
object	E0102-72 S3,-120,1,0,0	Source name
dtcycle	0	
cycle	P	events from which exps? Prim/Second/Both
ra_targ	16.01	Observer's specified target RA [deg]
dec_targ	-72.032028	Observer's specified target Dec [deg]
ra_nom	15.812154456391	Nominal RA [deg]
dec_nom	-72.057389785315	Nominal Dec [deg]
roll_nom	203.96841328718	Nominal Roll [deg]
revision	1	Processing version of data
ontime	10064.460728288	Sum of GTIs [s]
livetime	9573.3479770643	Livetime [s]
ontime7	10064.460728288	Sum of GTIs [s]
l2events	35037	Number of level 2 events



2 OBI

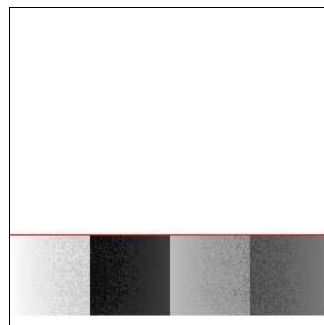
2.1 OBI

2.1.1 Images



2.1.2 Bias

Chip 7



2.1.3 Parameters

obi_num	2	Obi number	sched_exp_time	10000.769000	[s] Scheduled observation exposure time
ascdsver	10.3.3	Processing system revision	ontime	10064.460728288	Sum of GTIs [s]
caldsver	4.6.7	 	ontime7	10064.460728288	Sum of GTIs [s]
date	2015-03-08T18:17:32	Date and time of file creation	l1events	42046	Number of level 1 events
revision	1	Processing version of data			

2.1.4 Events

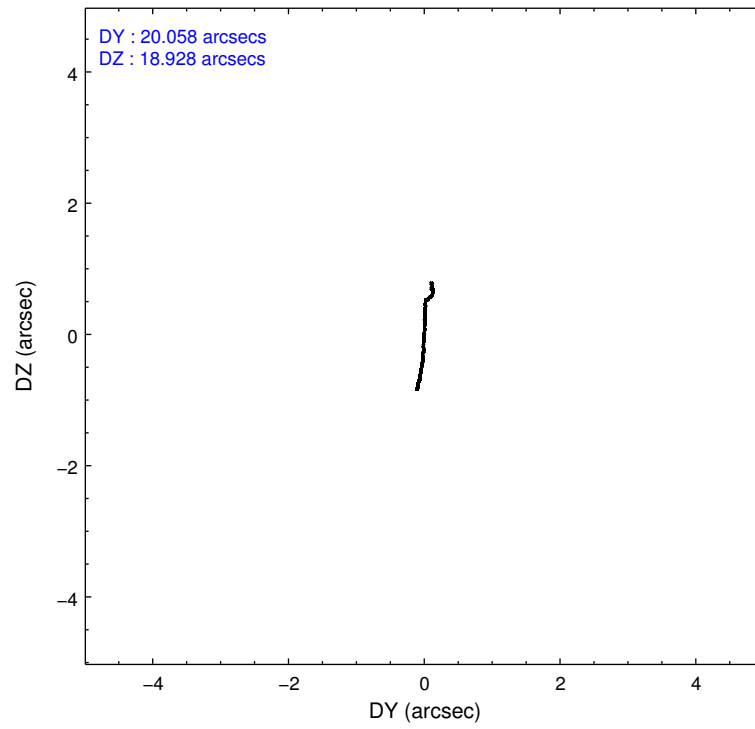
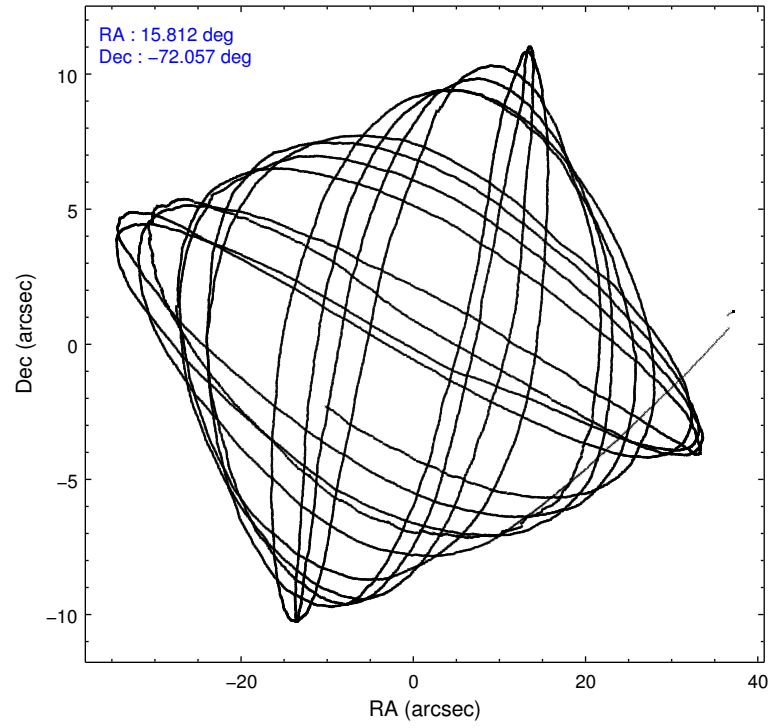
	ccd 7
level 1 events	42046
rejected events	6850
rejected %	16%

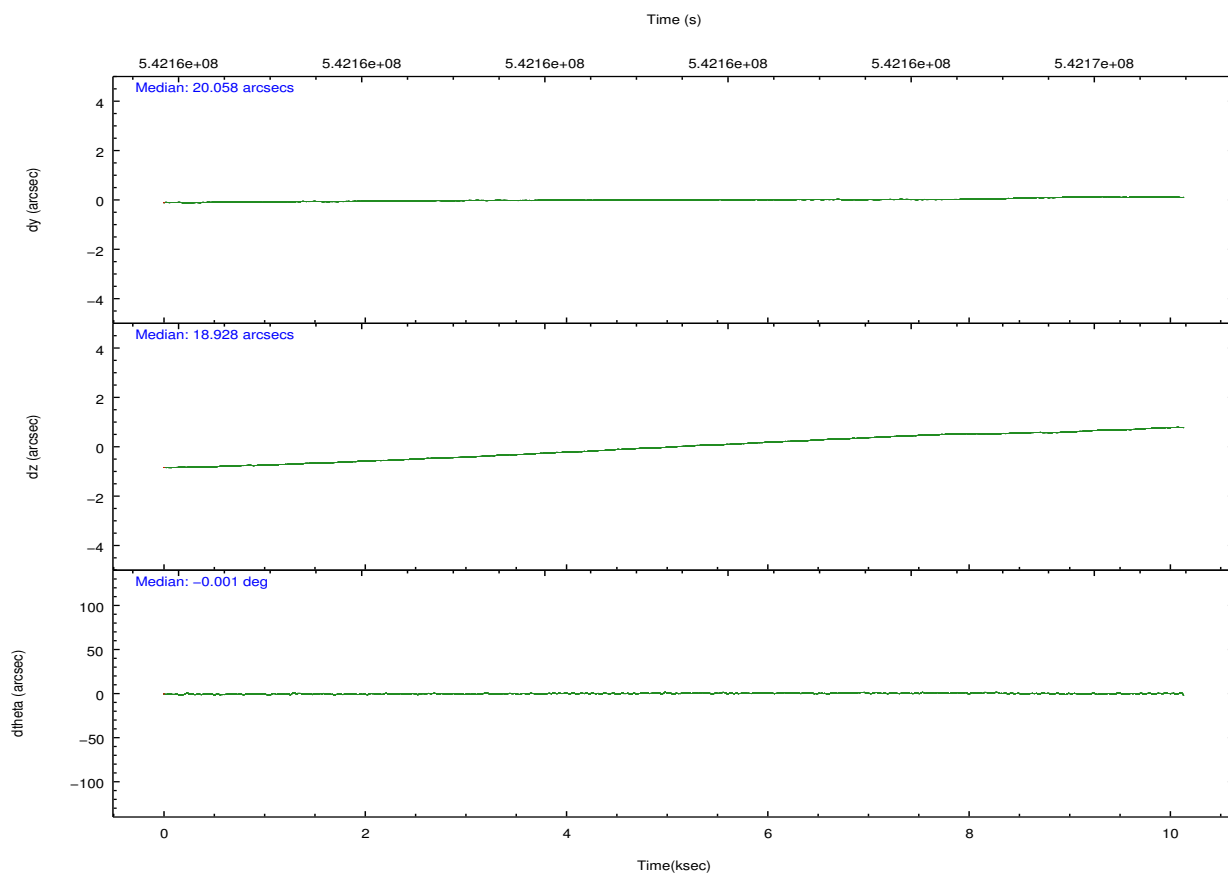
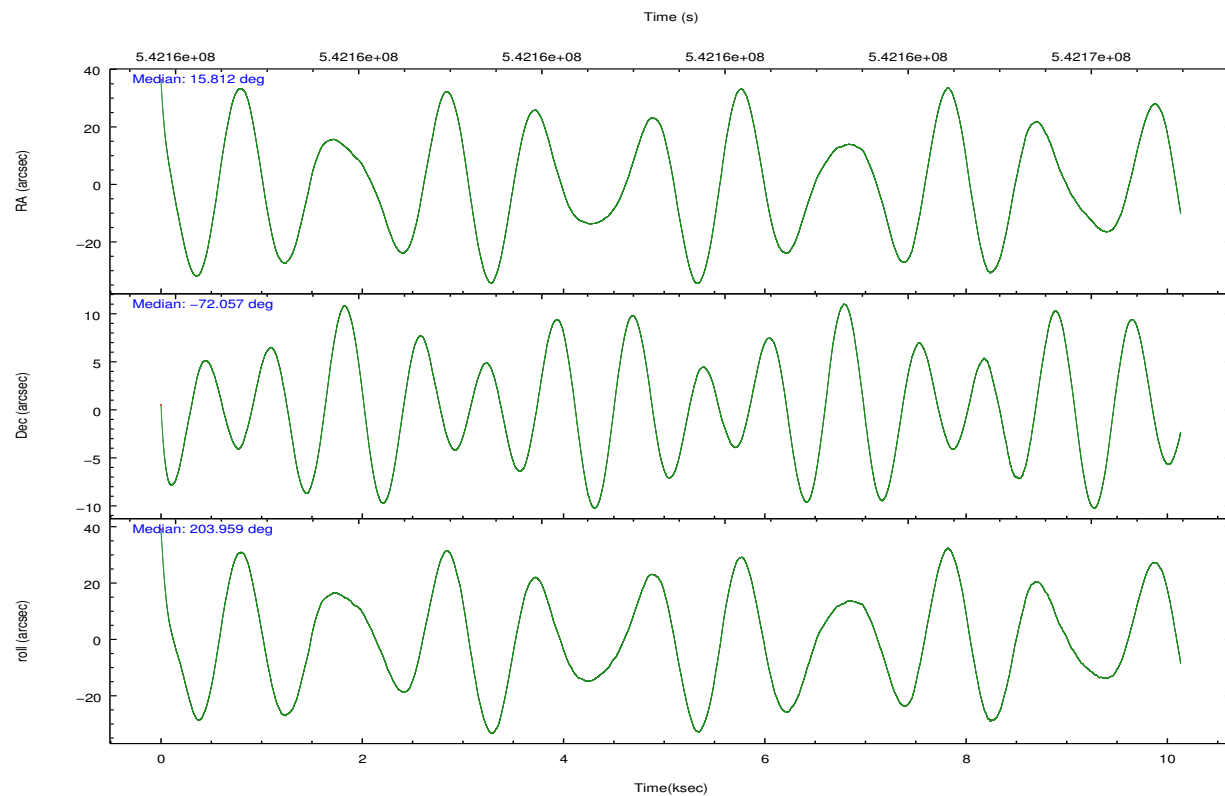
	ccd 7
grade 0 events	10019
	23%
grade 1 events	42
	0%
grade 2 events	9039
	21%
grade 3 events	4296
	10%
grade 4 events	4272
	10%
grade 5 events	1546
	3%
grade 6 events	7572
	18%
grade 7 events	5260
	12%

2.2 Compared Parameters

Parameter	Planned	Actual	Parameter	Planned	Actual
Instrument	ACIS	ACIS	Obspar format version number	7	7
Detector	ACIS-7	ACIS-7	Obspar file type	PREDICTED	ACTUAL
Grating	NONE	NONE	Obspar update status	NONE	UPDATED
Data mode	VFAINT	VFAINT	Number of optional ACIS chips dropped	0	0
Observation mode	POINTING	POINTING	On-chip summing requested	N	N
[deg] Pointing RA	15.863475	15.81215445639054	Subarray requested	CUSTOM	1/4
[deg] Pointing Dec	-72.034949	-72.05738978531521	Subarray start row	42	42
[deg] Pointing Roll	203.860605	203.9684132871765	Subarray row count	256	256
[s] Window start time (MET)	539136067.184000	539136067.184000	Alternating exposures requested	N	N
[s] Window stop time (MET)	544147267.184000	544147267.184000	[s] Primary exposure time	0.000000	0.8
[mm] SIM focus pos	-0.684267	-0.6828225247311905			
[mm] SIM defocus	0	0.001444936568705701			
[mm] SIM translation stage pos	-182.432523	-182.4387182811936			
[mm] SIM translation stage offset	-7.7	-7.693804301814197			
[s] Observation start time (MET)	542156484.184000	542154957.57025			
Observation start date	2015-03-07T23:00:17	2015-03-07T22:35:57			
[s] Observation end time (MET)	542166485.184000	542166709.19591			
Observation end date	2015-03-08T01:46:58	2015-03-08T01:51:49			
Read mode	TIMED	TIMED			

2.3 Aspect



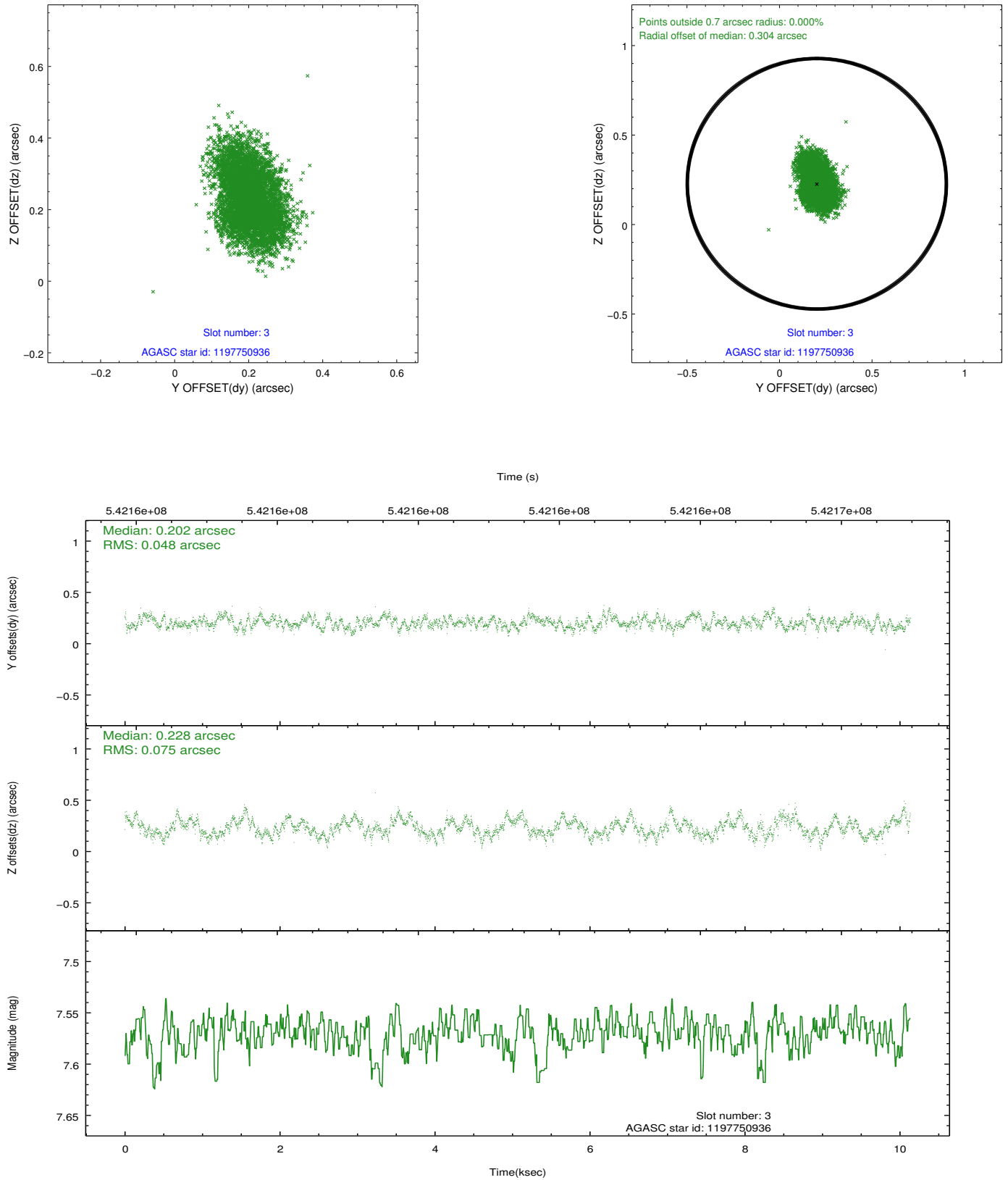


Slot Statistics

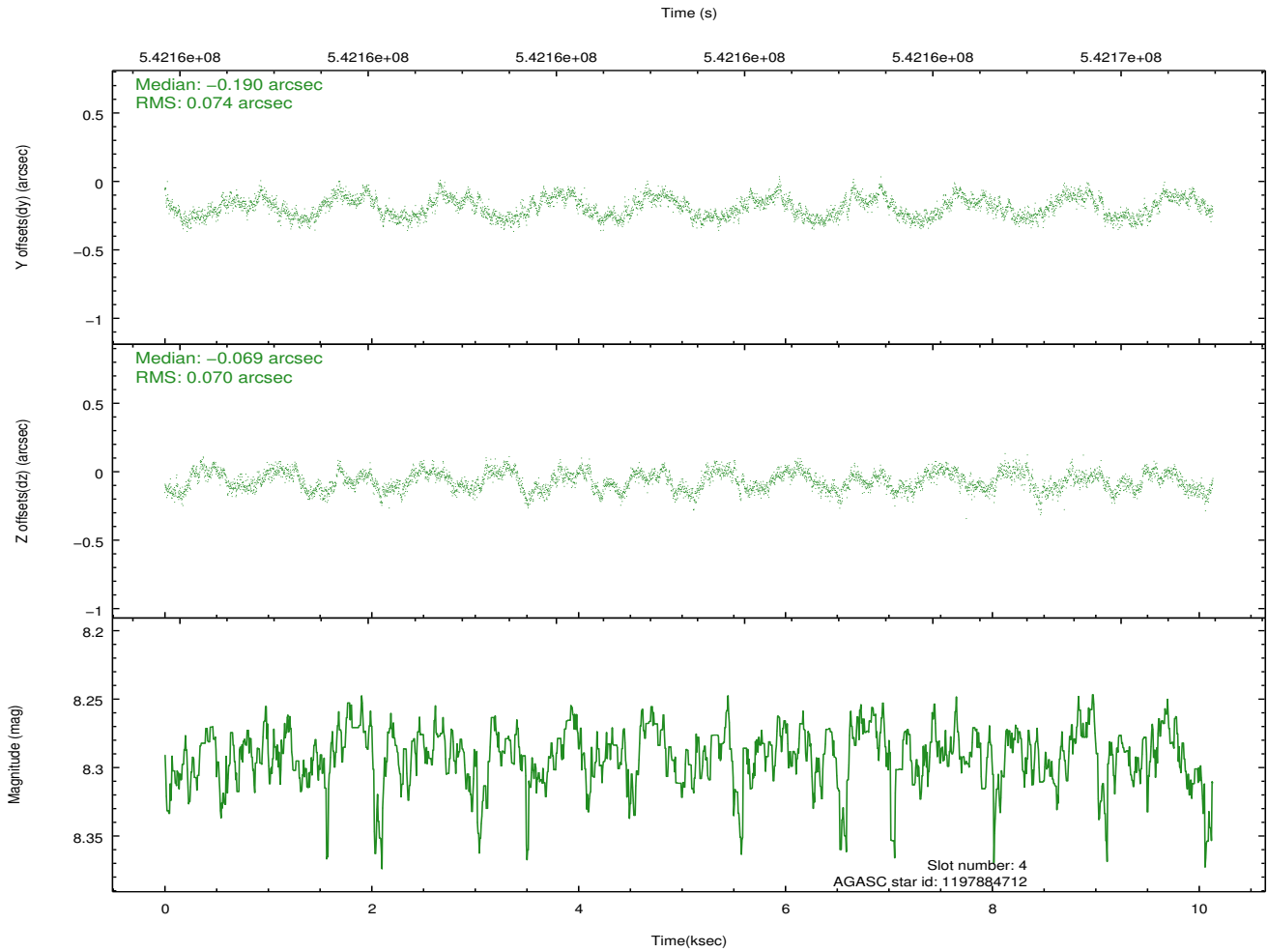
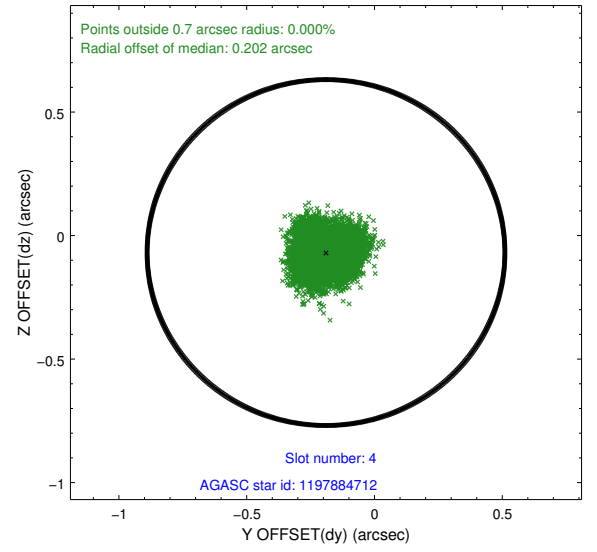
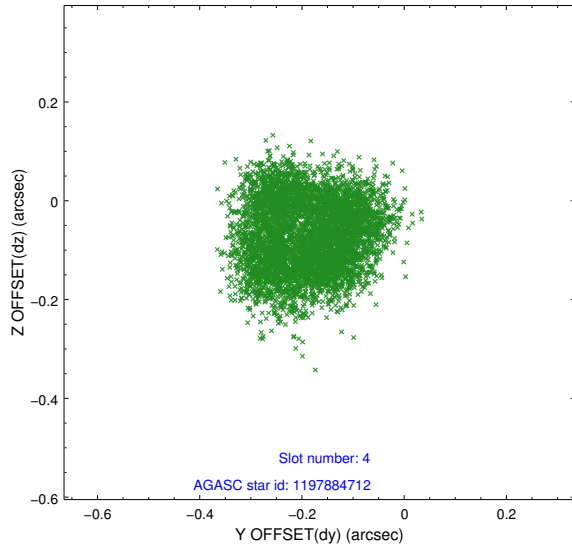
slot	status	used	id	mag	n_pts	med_dy	med_dz	dr1	dr2	ra	dec	mean_y	mean_z
0	FID		ACIS-S-2	7.11	2472	-0.291	-0.210	0.019	0.027	0.000000	0.000000	-773.01	-1899.06
1	FID		ACIS-S-4	7.20	2472	0.268	0.174	0.011	0.016	0.000000	0.000000	2140.69	9.02
2	FID		ACIS-S-6	7.41	2472	-0.005	0.044	0.028	0.038	0.000000	0.000000	390.06	646.98
3	GUIDE	used	1197750936	7.57	4944	0.202	0.228	0.096	0.155	15.387940	-71.549550	-209.43	-1814.38
4	GUIDE	used	1197884712	8.29	4944	-0.190	-0.069	0.112	0.160	16.087398	-72.252690	92.61	816.45
5	GUIDE	used	1197885104	9.33	4943	0.204	0.025	0.109	0.177	17.845067	-72.189368	-1754.41	1424.35
6	GUIDE	used	1197885328	7.24	4943	0.167	0.294	0.091	0.143	16.283090	-71.733943	-871.99	-797.50
7	GUIDE	used	1198189696	7.33	4943	-0.385	-0.488	0.089	0.140	15.223750	-72.697522	1592.19	1907.68

2.4 Star Slots

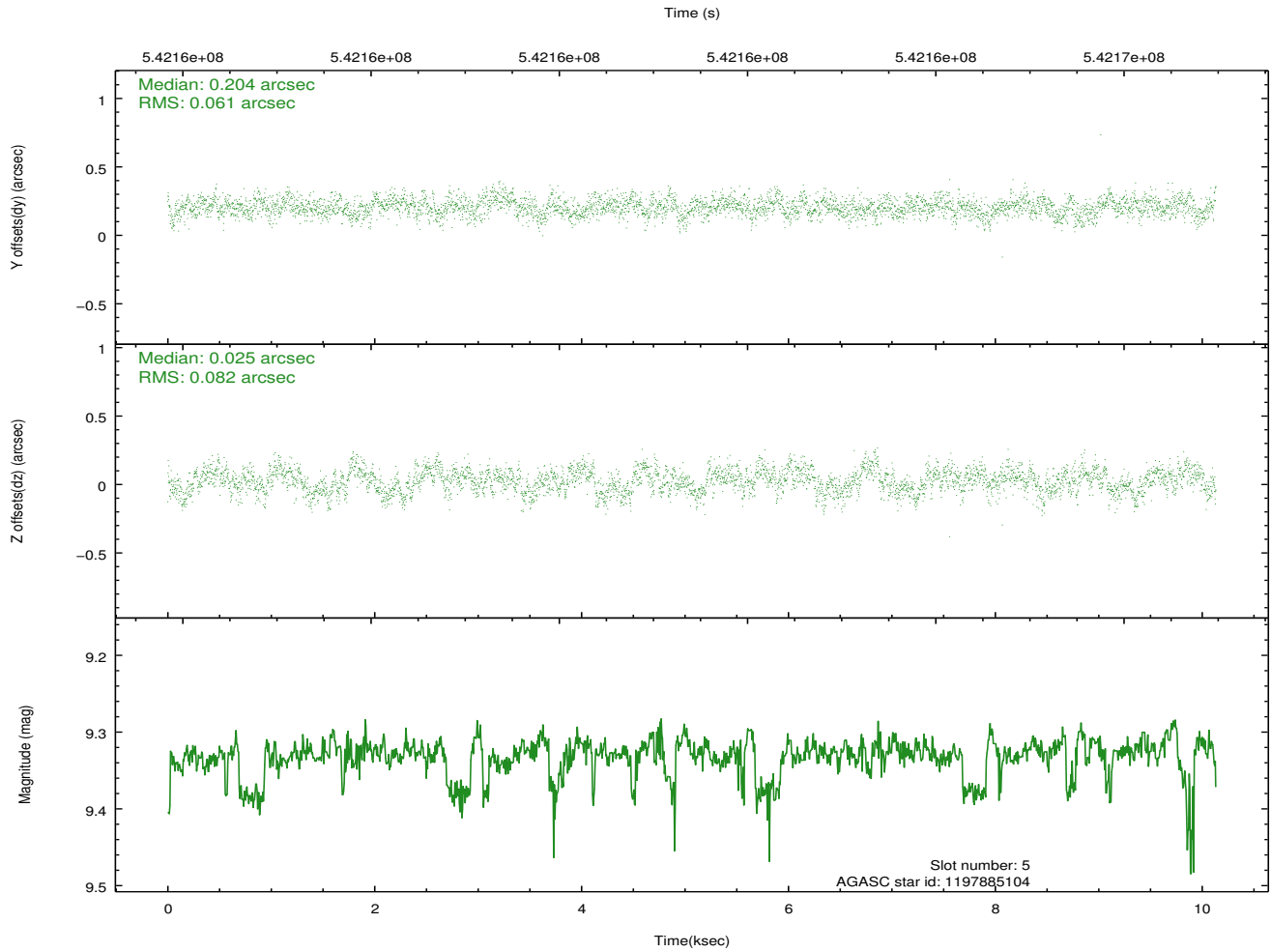
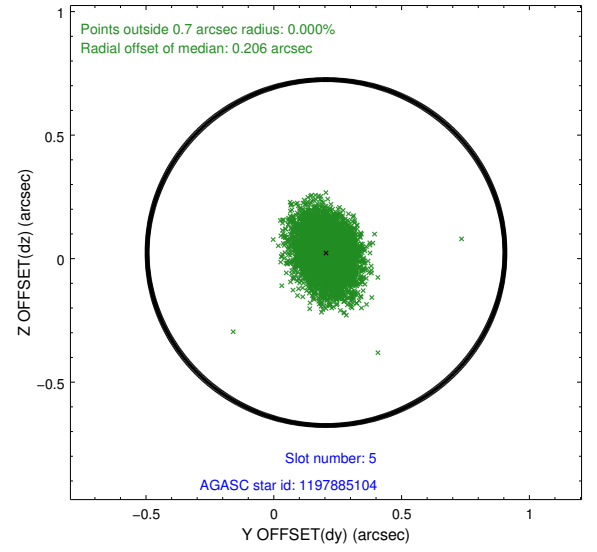
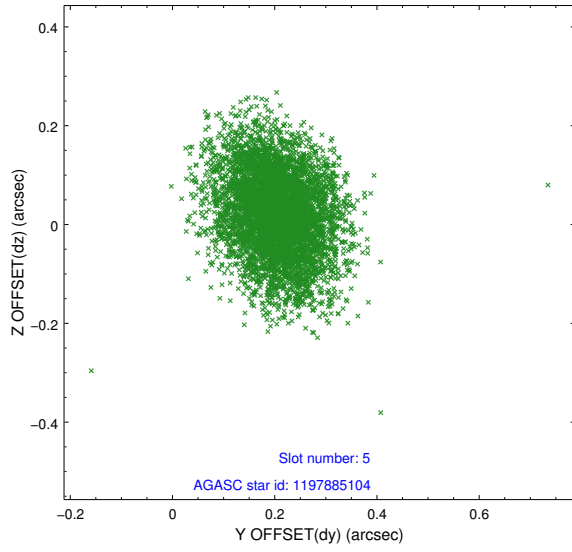
2.4.1 Slot 3



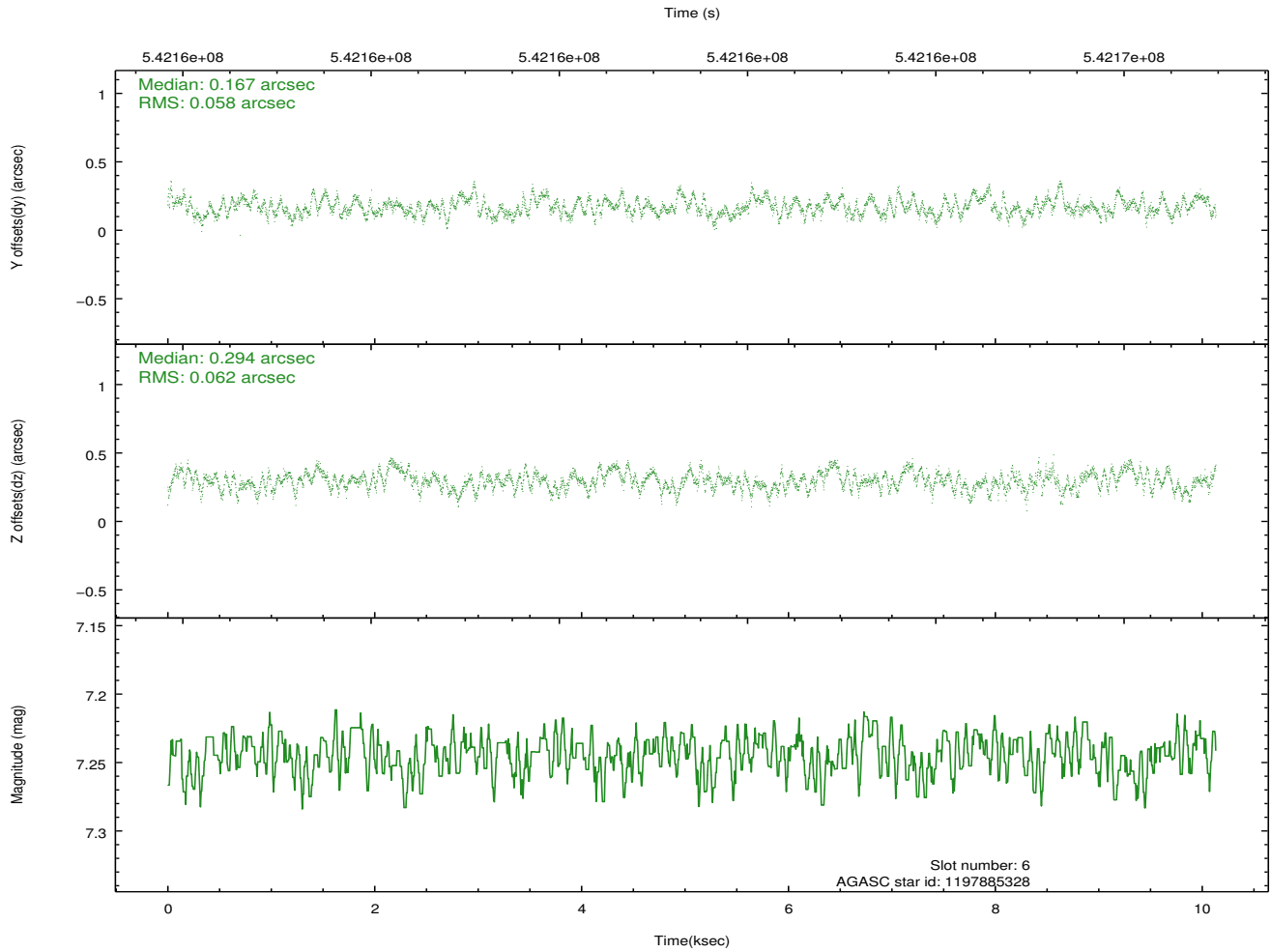
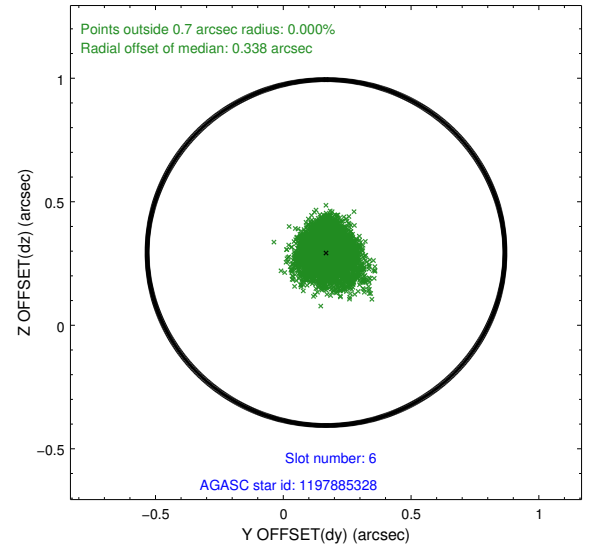
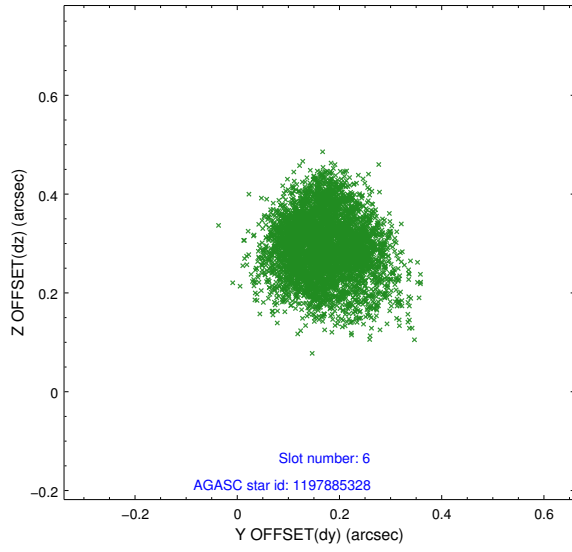
2.4.2 Slot 4



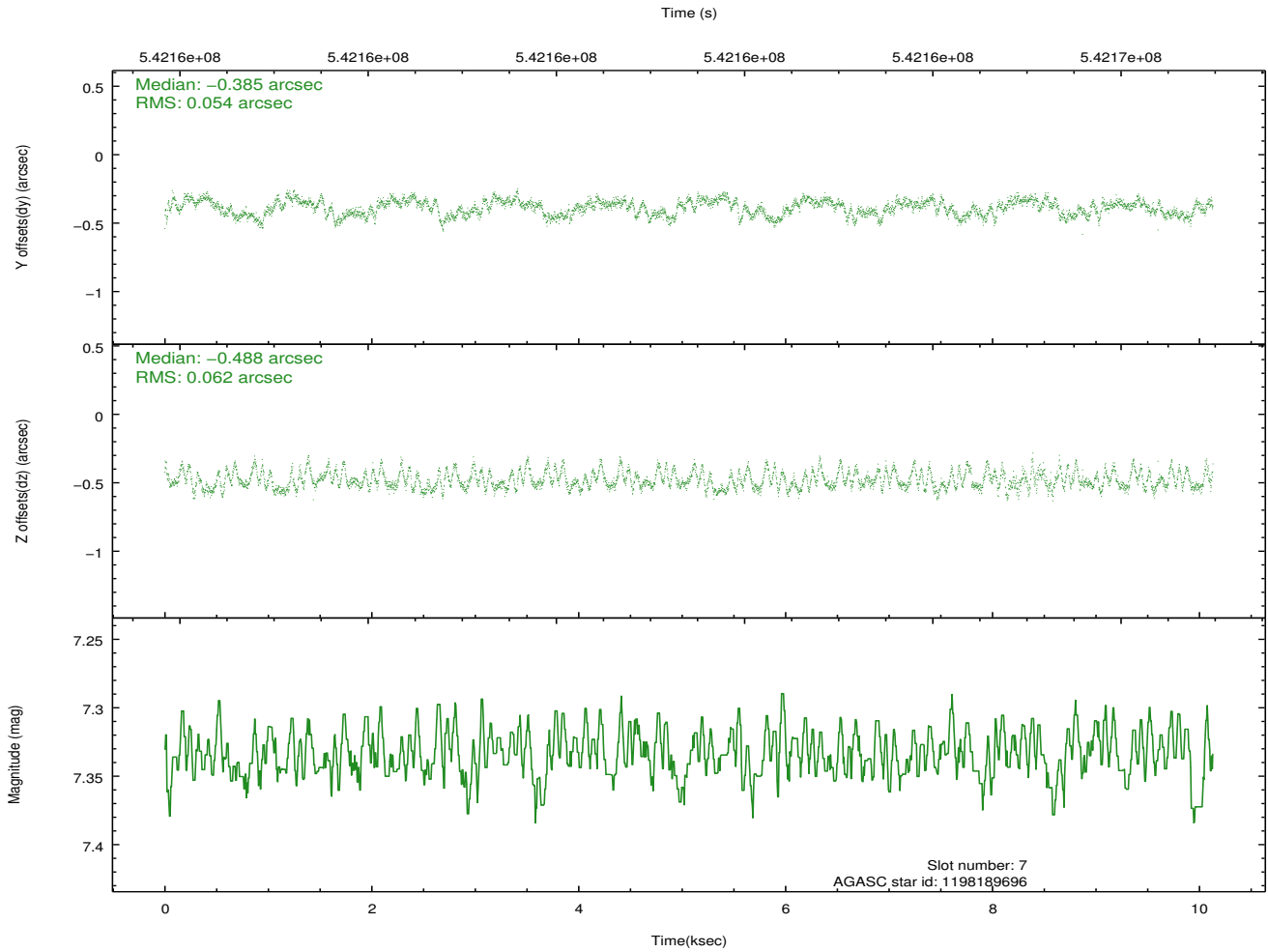
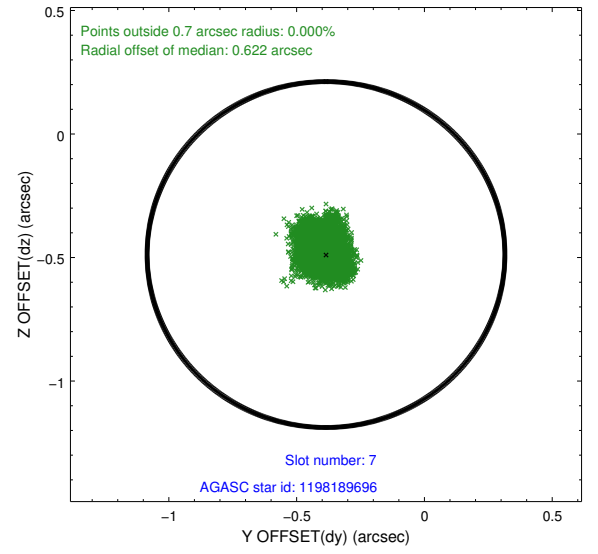
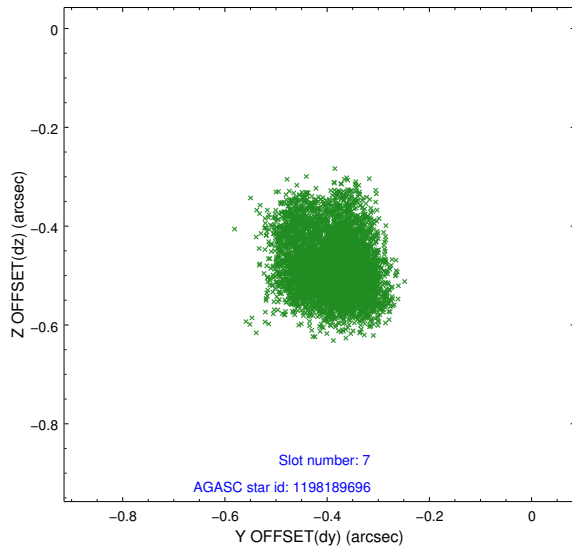
2.4.3 Slot 5



2.4.4 Slot 6

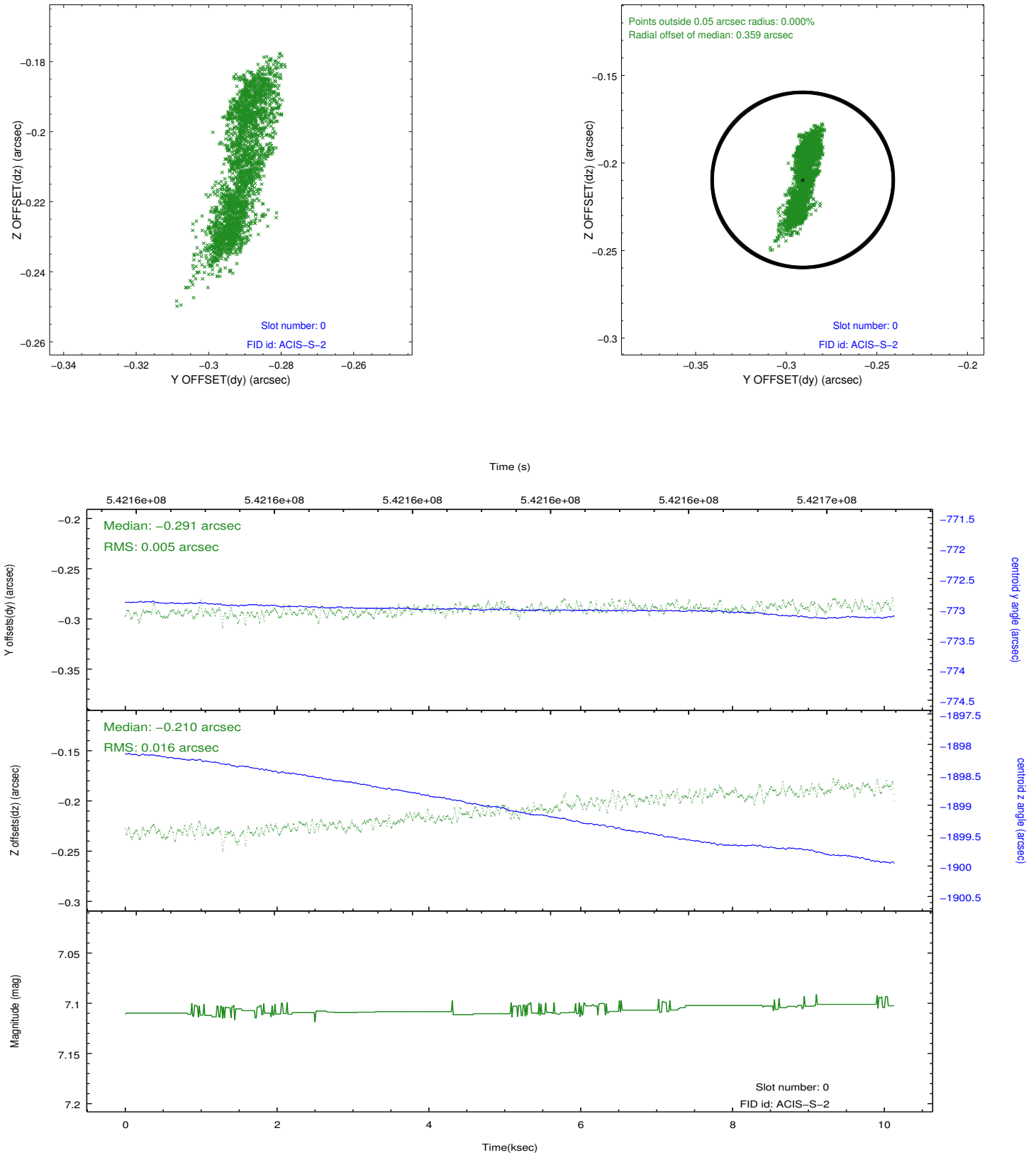


2.4.5 Slot 7

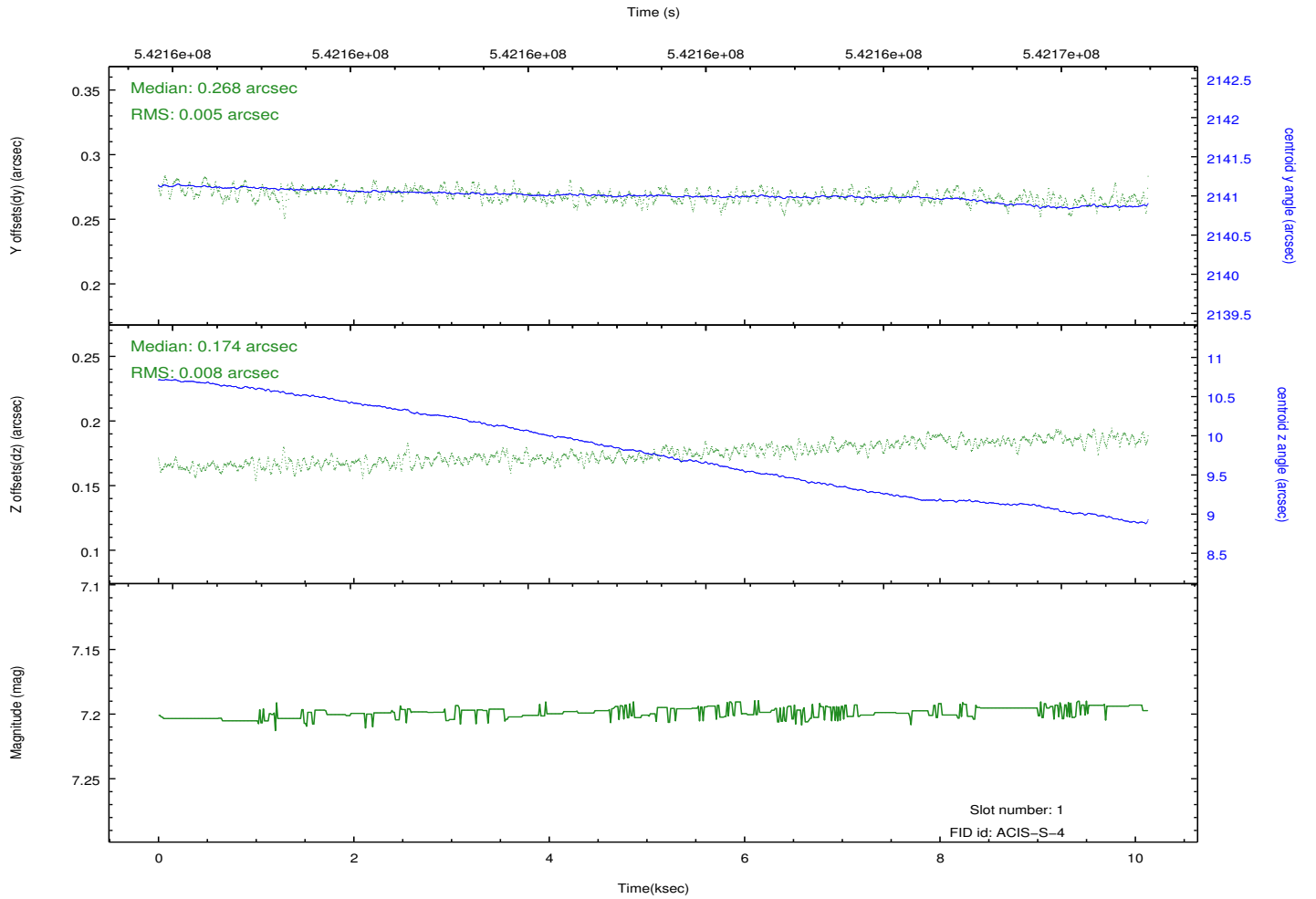
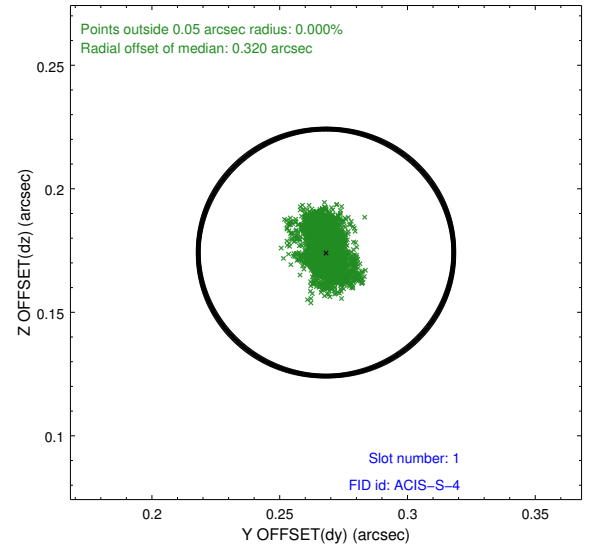
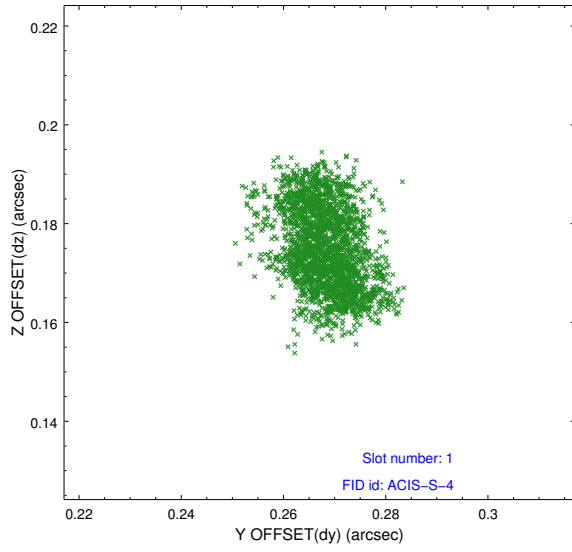


2.5 FID Slots

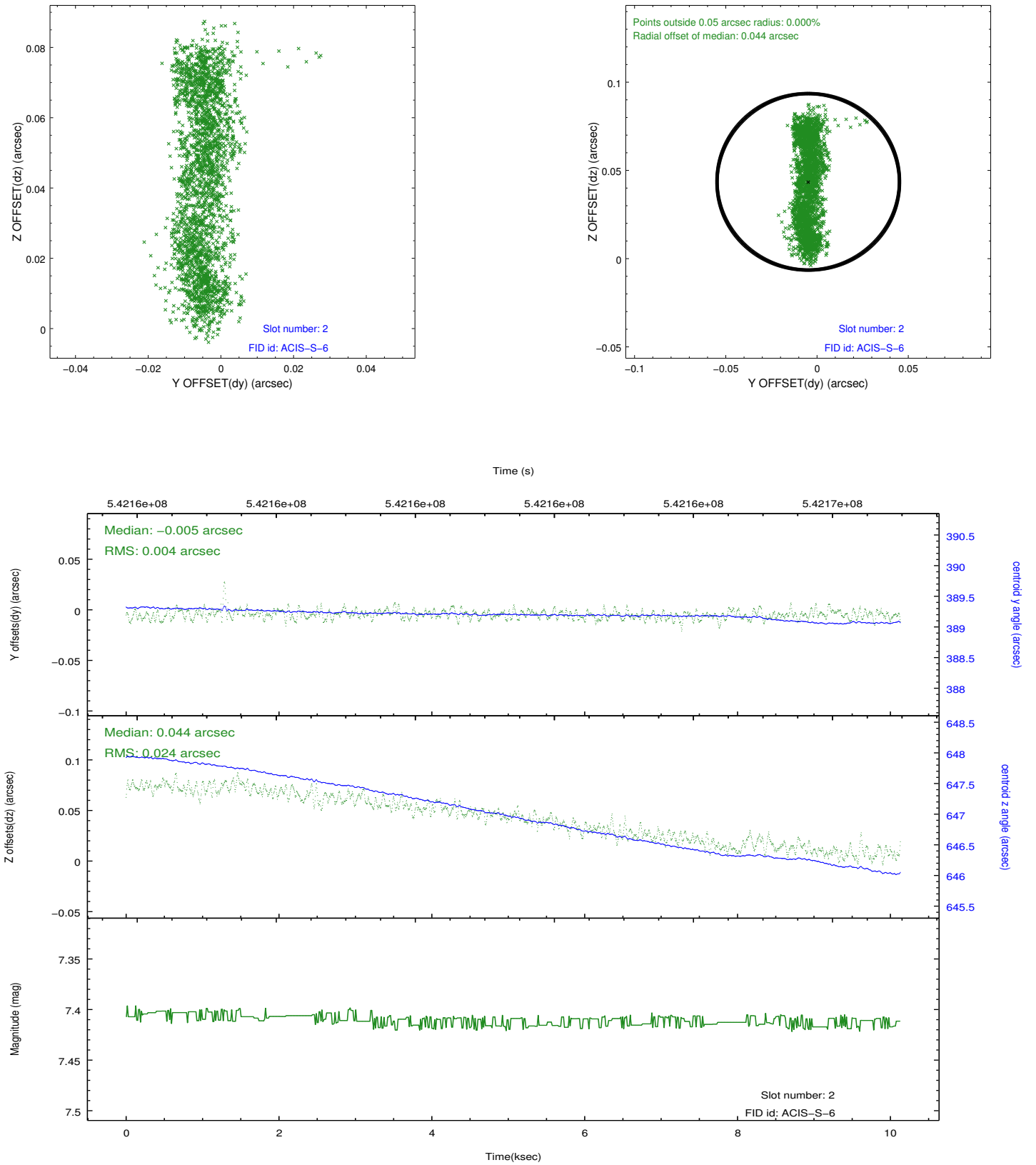
2.5.1 Slot 0



2.5.2 Slot 1



2.5.3 Slot 2



A Summary

A.1 Status

V&V Scientist	Joy Nichols
V&V Date (YYYY-MM-DD)	2015.03.09
V&V Edition	1
V&V Disposition and Status	OK
V&V Charge Time	10.064460728288

A.2 Comments