

V&V Reference Report

L2 ASCDS Version : 10.3

Observation 16341 - L2 Version 1
Chandra X-Ray Center

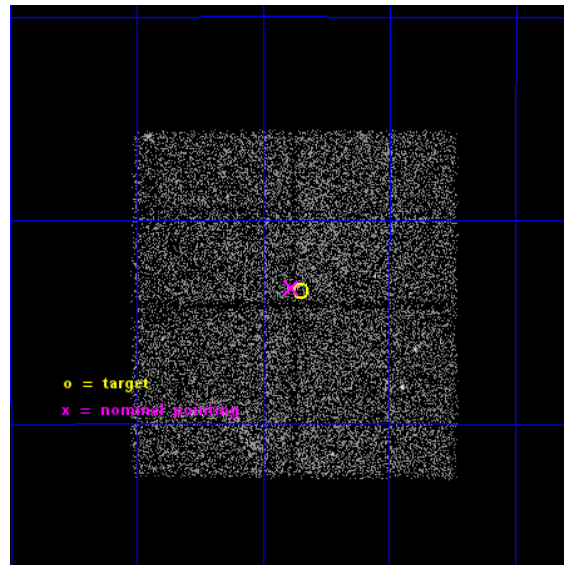
L2 Processing Date : Nov 24 2014

Contents

1	Front	2
2	OBI	3
2.1	OBI	3
2.1.1	Images	3
2.1.2	Bias	3
2.1.3	Parameters	4
2.1.4	Events	4
2.2	Compared Parameters	5
2.3	Aspect	6
2.4	Star Slots	9
2.4.1	Slot 3	9
2.4.2	Slot 4	10
2.4.3	Slot 5	11
2.4.4	Slot 6	12
2.4.5	Slot 7	13
2.5	FID Slots	14
2.5.1	Slot 0	14
2.5.2	Slot 1	15
2.5.3	Slot 2	16
A	Summary	17
A.1	Status	17
A.2	Comments	17

1 Front

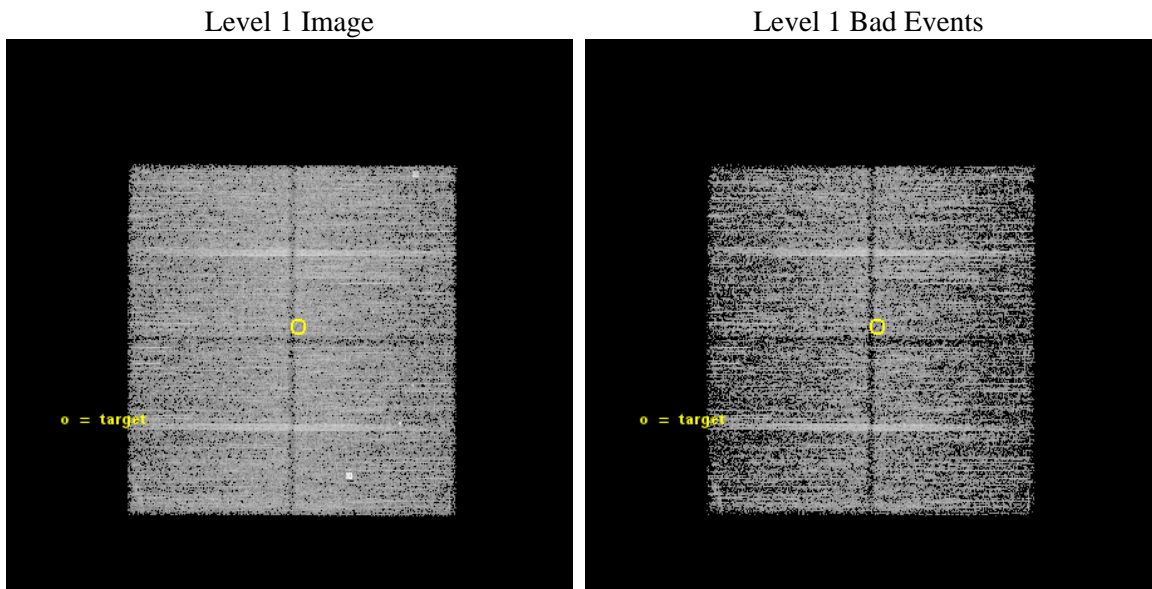
seq_num	901126	Sequence number
obs_id	16341	Observation id
title	A Wide-Field Survey in the Chandra Deep Field-South Region: A Combined GTO + GO Approach	Proposal title
observer	Professor Gordon Garmire	Principal investigator
object	CDFS-WF18	Source name
dtcycle	0	
cycle	P	events from which exps? Prim/Second/Both
ra_targ	52.962917	Observer's specified target RA [deg]
dec_targ	-28.224472	Observer's specified target Dec [deg]
ra_nom	52.971787414823	Nominal RA [deg]
dec_nom	-28.221968468097	Nominal Dec [deg]
roll_nom	0.21288376691861	Nominal Roll [deg]
revision	1	Processing version of data
ontime	14780.676962733	Sum of GTIs [s]
livetime	14587.556536839	Livetime [s]
ontime0	14790.10011375	Sum of GTIs [s]
ontime1	14786.95906353	Sum of GTIs [s]
ontime2	14790.10011375	Sum of GTIs [s]
ontime3	14780.676962733	Sum of GTIs [s]
l2events	27587	Number of level 2 events



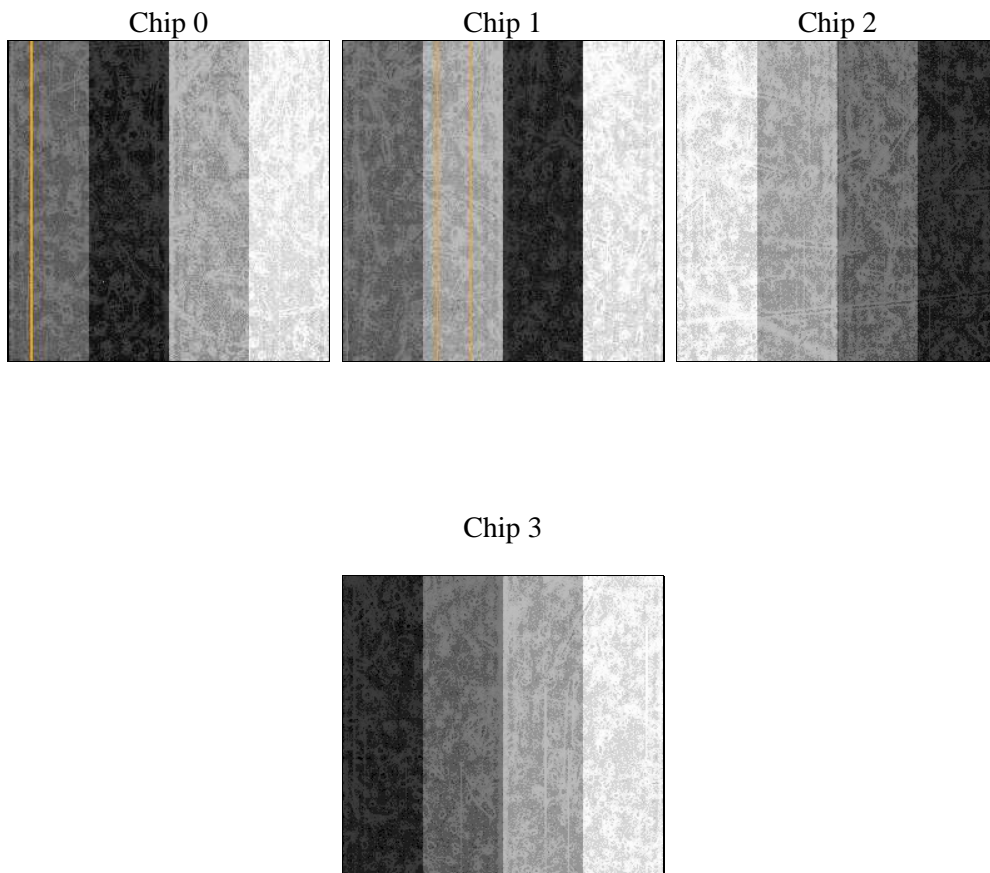
2 OBI

2.1 OBI

2.1.1 Images



2.1.2 Bias



2.1.3 Parameters

obi_num	0	Obi number	sched_exp_time	15000.000000	[s] Scheduled observation exposure time
ascdsver	10.3	Processing system revision	ontime	14780.676962733	Sum of GTIs [s]
caldsver	4.6.4	 	ontime0	14790.10011375	Sum of GTIs [s]
date	2014-11-25T03:04:53	Date and time of file creation	ontime1	14786.95906353	Sum of GTIs [s]
revision	1	Processing version of data	ontime2	14790.10011375	Sum of GTIs [s]
			ontime3	14780.676962733	Sum of GTIs [s]
			l1events	277271	Number of level 1 events

2.1.4 Events

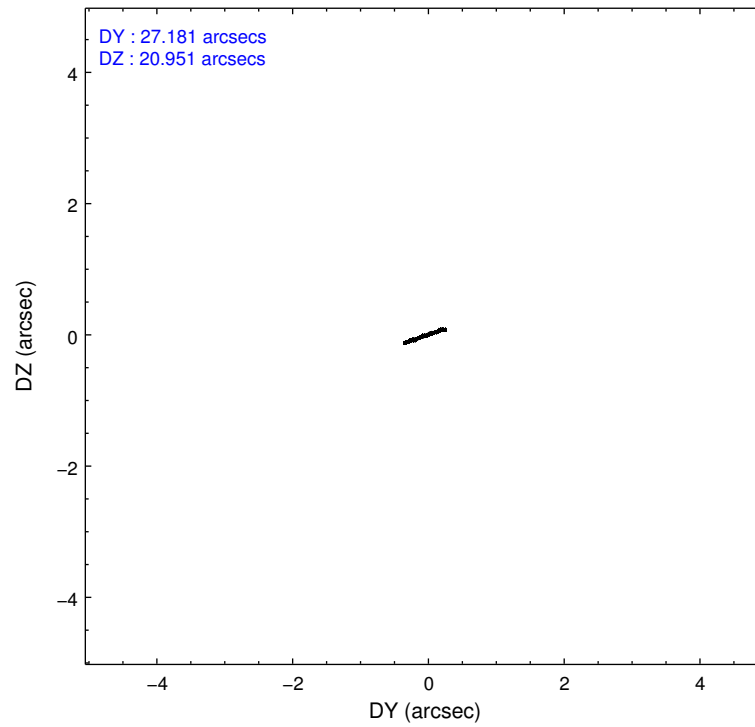
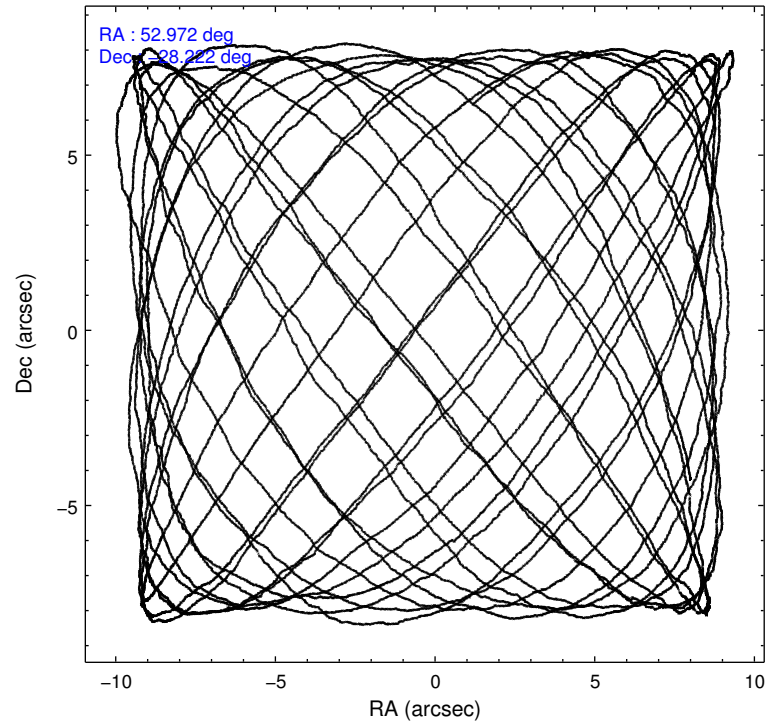
	ccd 0	ccd 1	ccd 2	ccd 3
level 1 events	65637	68056	72889	70689
rejected events	57122	57844	64910	62370
rejected %	87%	84%	89%	88%

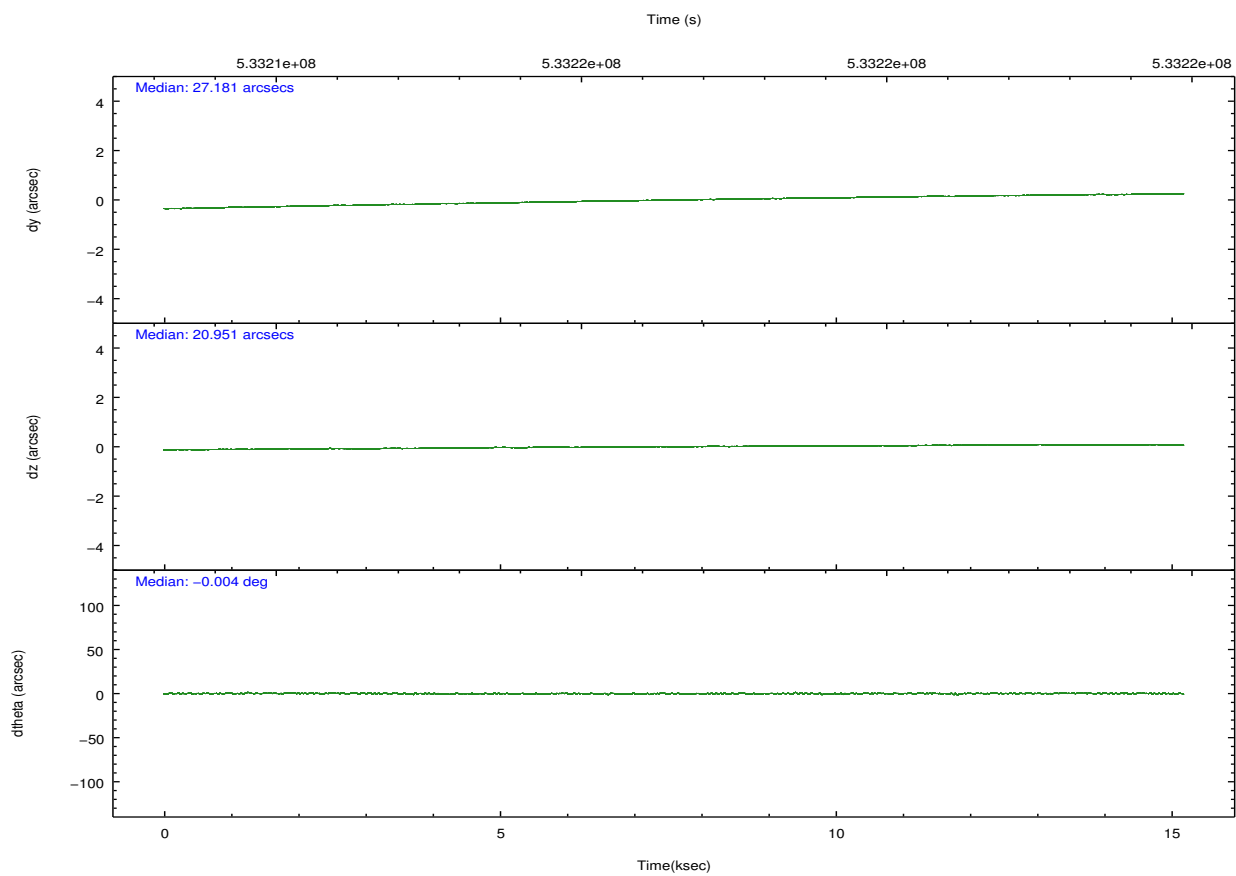
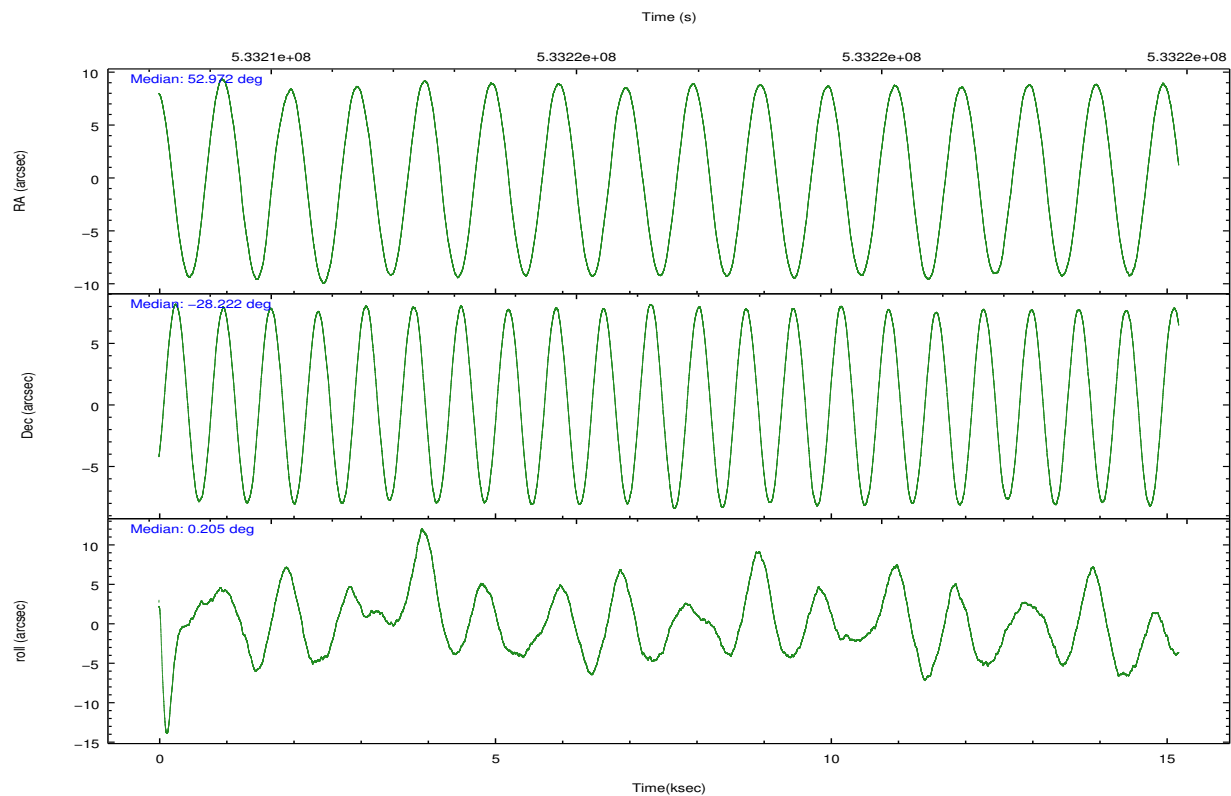
	ccd 0	ccd 1	ccd 2	ccd 3
grade 0 events	3055	4499	2932	2865
	4%	6%	4%	4%
grade 1 events	39	38	39	35
	0%	0%	0%	0%
grade 2 events	2056	2016	1939	2158
	3%	2%	2%	3%
grade 3 events	933	935	788	847
	1%	1%	1%	1%
grade 4 events	788	866	826	845
	1%	1%	1%	1%
grade 5 events	2873	3044	2627	3255
	4%	4%	3%	4%
grade 6 events	1685	1896	1495	1608
	2%	2%	2%	2%
grade 7 events	54208	54762	62243	59076
	82%	80%	85%	83%

2.2 Compared Parameters

Parameter	Planned	Actual	Parameter	Planned	Actual
Instrument	ACIS	ACIS	Obspar format version number	7	7
Detector	ACIS-0123	ACIS-0123	Obspar file type	PREDICTED	ACTUAL
Grating	NONE	NONE	Obspar update status	NONE	UPDATED
Data mode	VFAINT	VFAINT	Number of optional ACIS chips dropped	0	0
Observation mode	POINTING	POINTING	On-chip summing requested	N	N
[deg] Pointing RA	52.944749	52.97178741482323	Subarray requested	NONE	NONE
[deg] Pointing Dec	-28.235970	-28.22196846809728	Alternating exposures requested	N	N
[deg] Pointing Roll	359.991401	0.2128837669186137	[s] Primary exposure time	0.000000	3.1
[mm] SIM focus pos	-0.782348	-0.7809083437167272			
[mm] SIM defocus	0	0.001439871863259334			
[mm] SIM translation stage pos	-233.592463	-233.5874344608287			
[mm] SIM translation stage offset	0	-0.005018542100998502			
[s] Observation start time (MET)	533209100.184000	533208724.27089			
Observation start date	2014-11-24T09:37:13	2014-11-24T09:32:04			
[s] Observation end time (MET)	533224100.184000	533224234.57176			
Observation end date	2014-11-24T13:47:13	2014-11-24T13:50:34			
Read mode	TIMED	TIMED			

2.3 Aspect



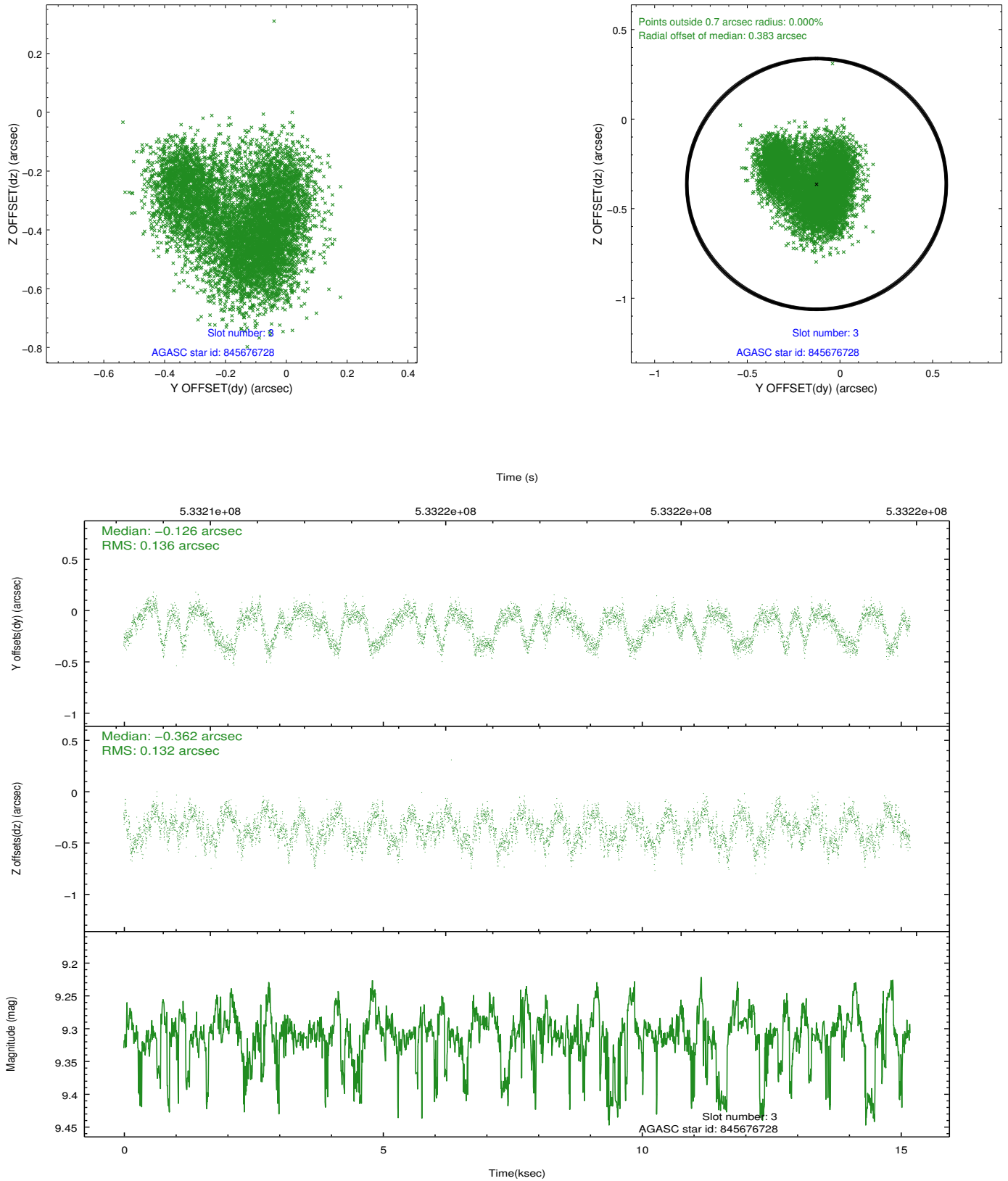


Slot Statistics

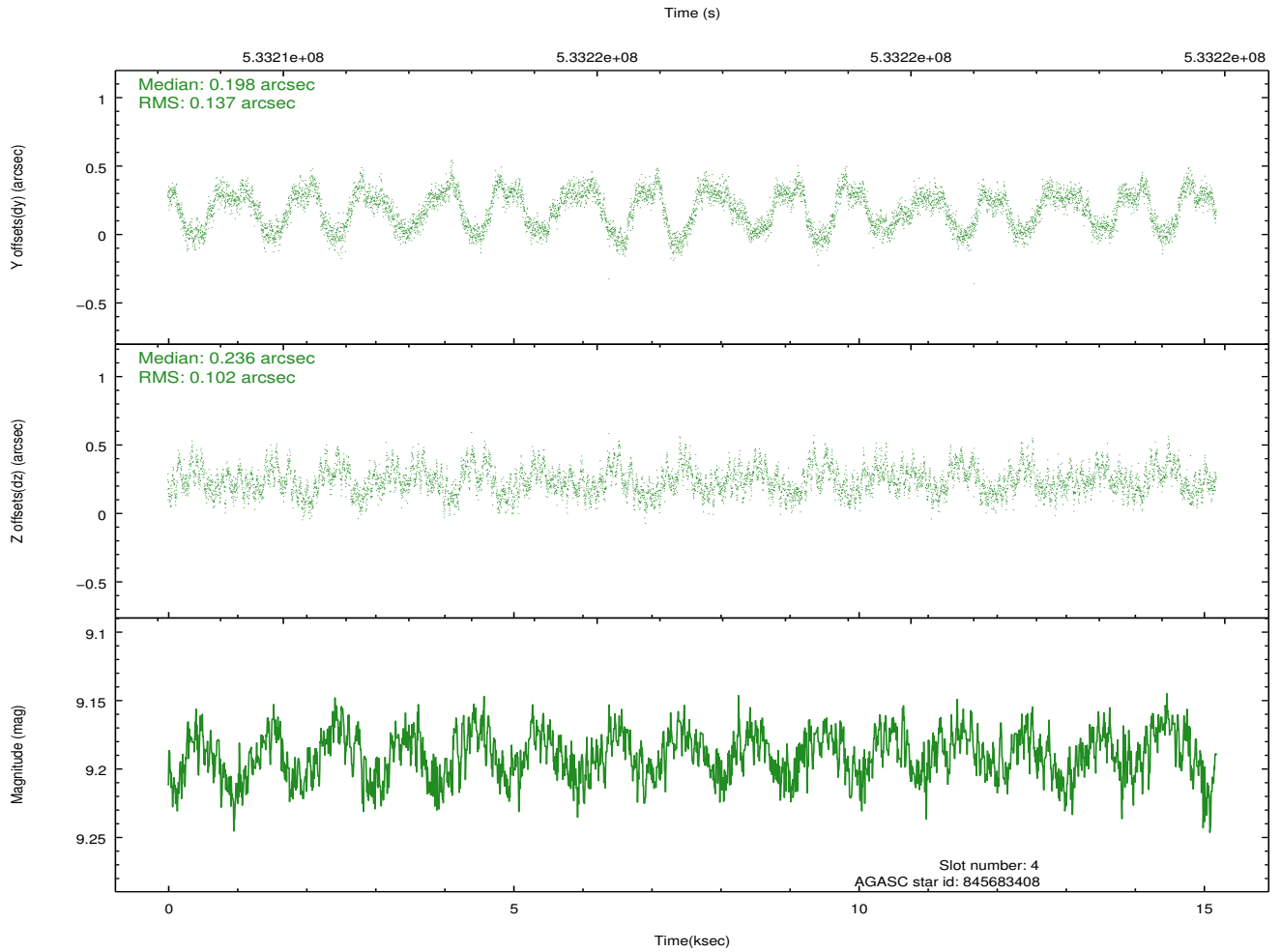
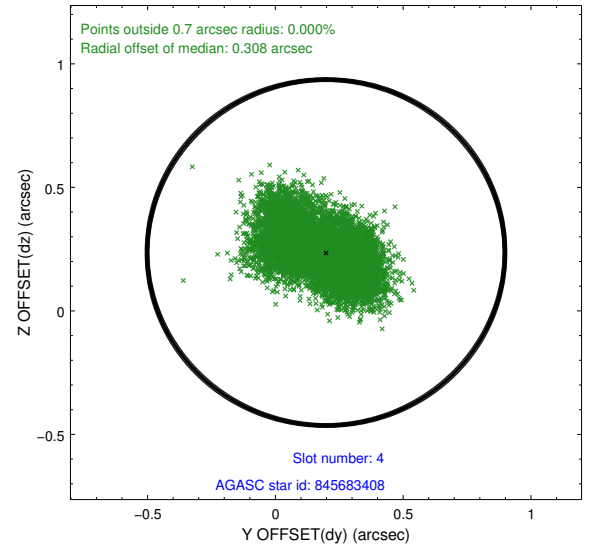
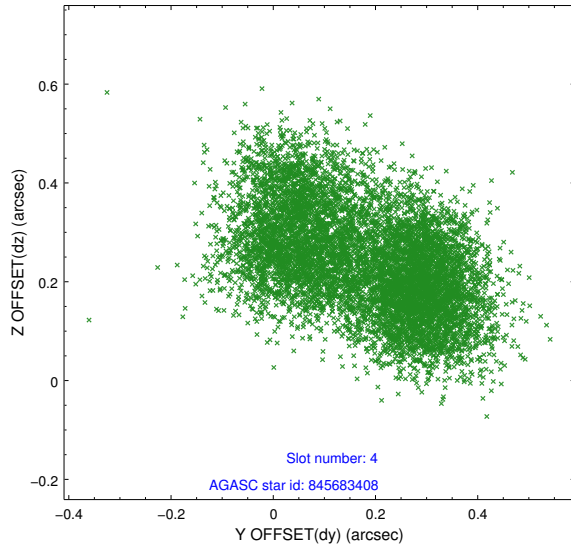
slot	status	used	id	mag	n_pts	med_dy	med_dz	dr1	dr2	ra	dec	mean_y	mean_z
0	FID		ACIS-I-1	7.20	3704	0.053	-0.031	0.009	0.020	0.000000	0.000000	912.05	-844.70
1	FID		ACIS-I-5	7.19	3703	-0.296	0.029	0.008	0.015	0.000000	0.000000	-1836.31	1052.61
2	FID		ACIS-I-6	7.19	3704	0.152	0.073	0.007	0.012	0.000000	0.000000	377.28	1697.57
3	GUIDE	used	845676728	9.31	7397	-0.126	-0.362	0.207	0.309	52.877179	-27.664318	-215.98	2057.68
4	GUIDE	used	845683408	9.19	7403	0.198	0.236	0.186	0.283	52.484531	-28.338862	-1457.65	-373.14
5	GUIDE	used	845683416	8.60	7406	0.257	0.228	0.105	0.171	52.400573	-28.566798	-1719.94	-1194.99
6	GUIDE	used	845807880	8.77	7403	-0.291	-0.441	0.088	0.144	53.382027	-27.886093	1390.76	1257.09
7	GUIDE	used	845816344	9.21	7399	0.007	0.336	0.142	0.232	53.137522	-28.675689	609.76	-1582.58

2.4 Star Slots

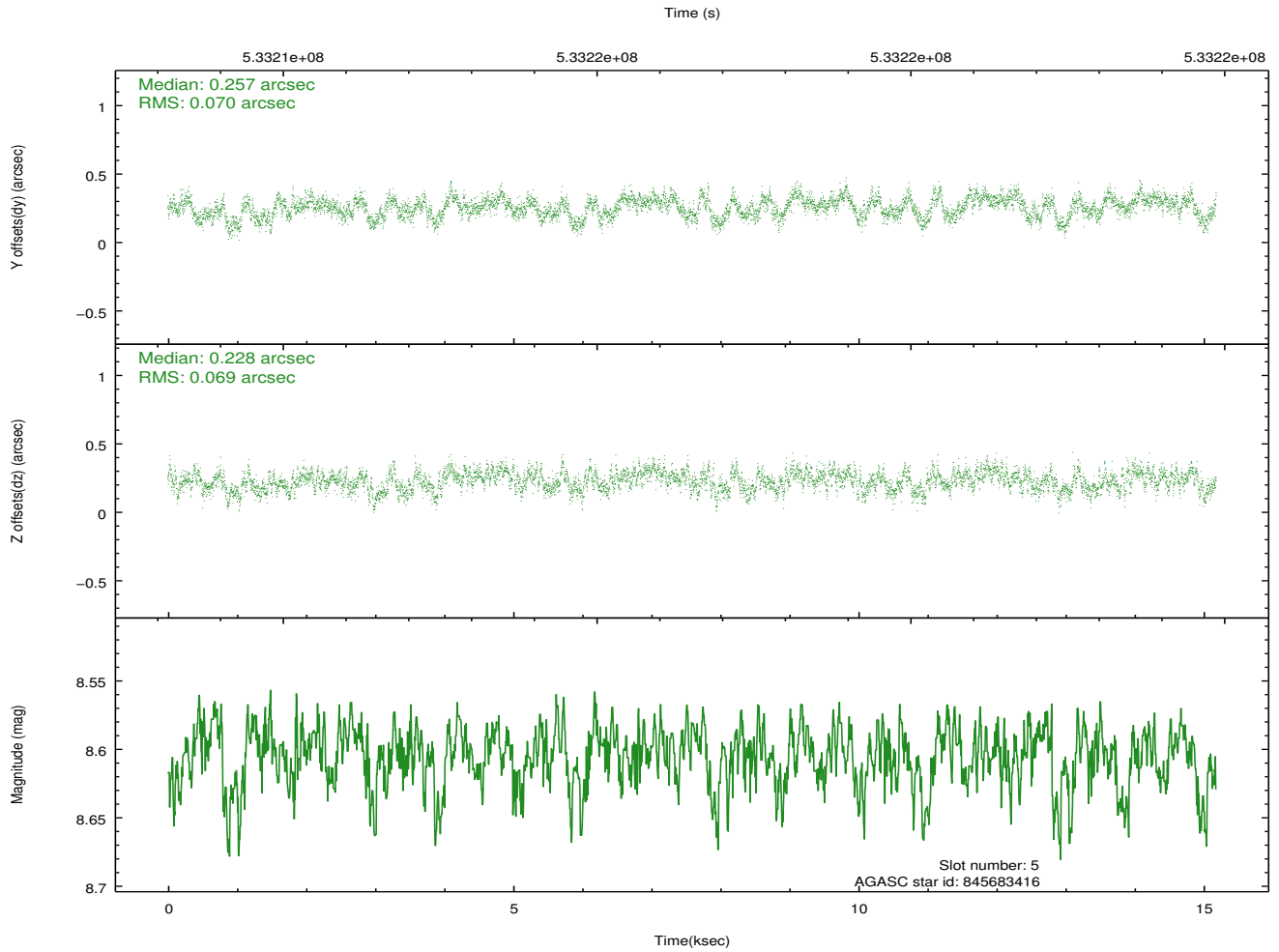
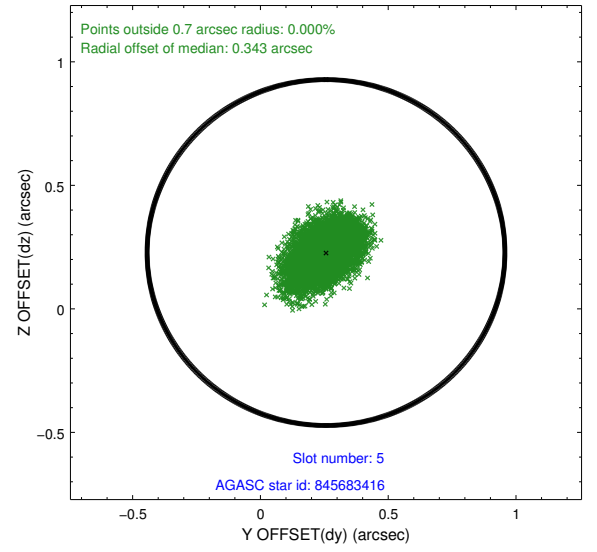
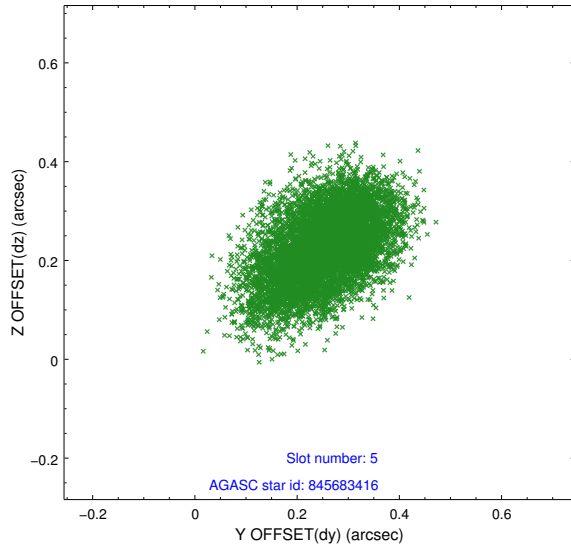
2.4.1 Slot 3



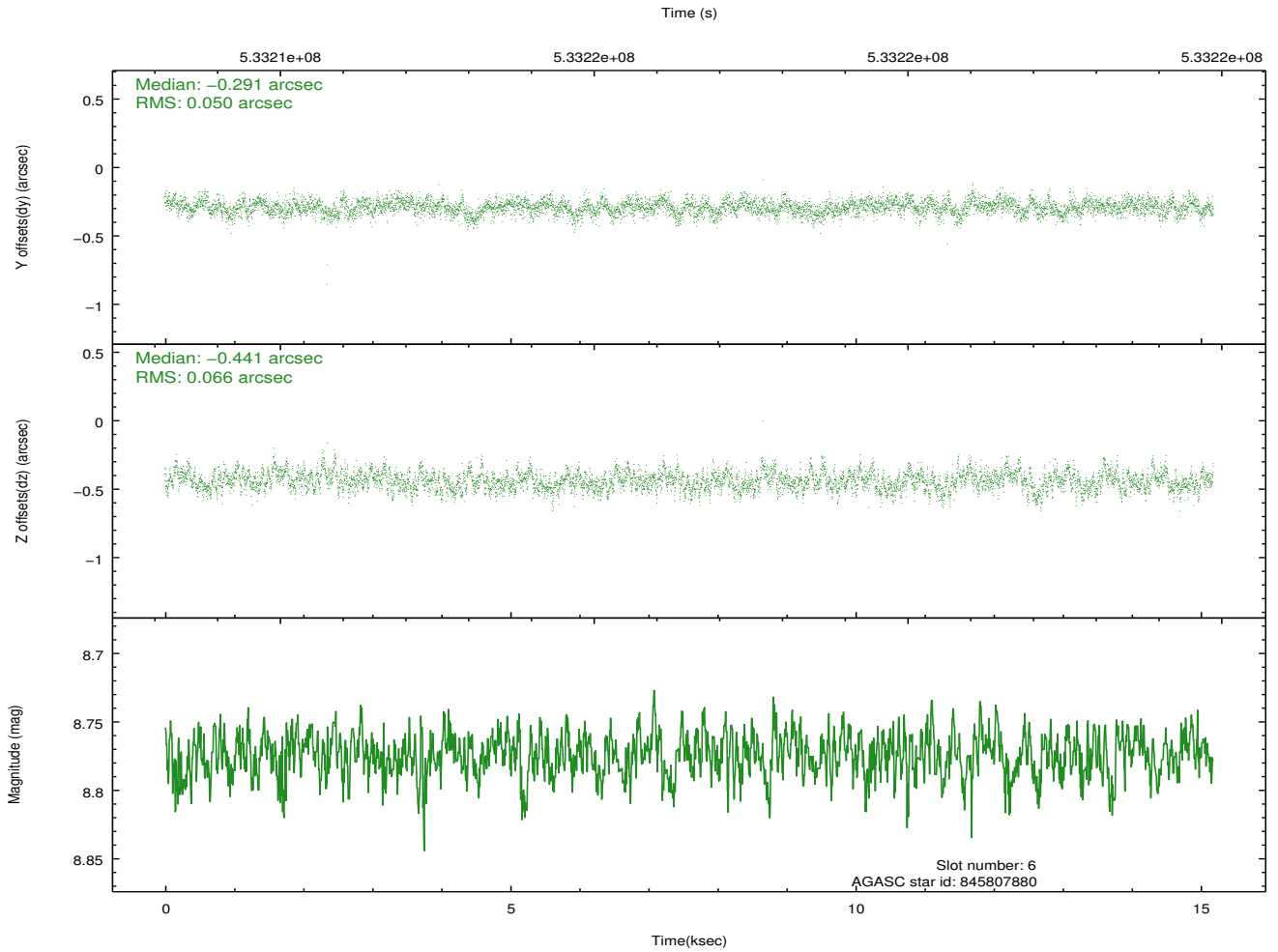
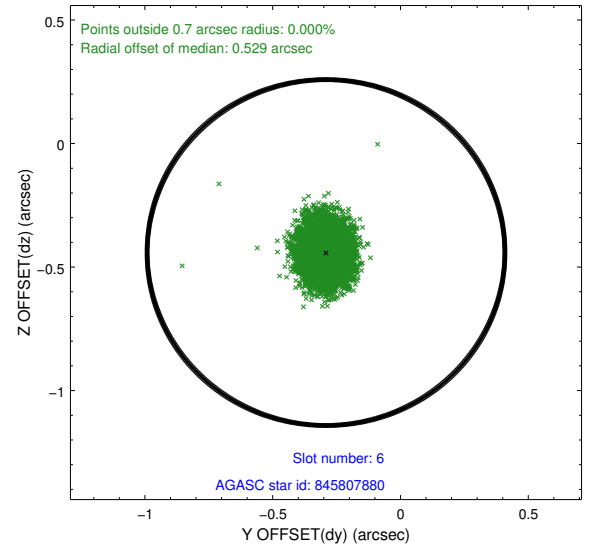
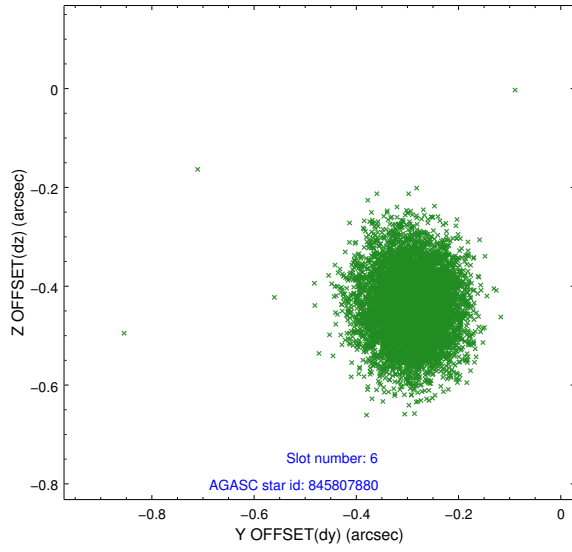
2.4.2 Slot 4



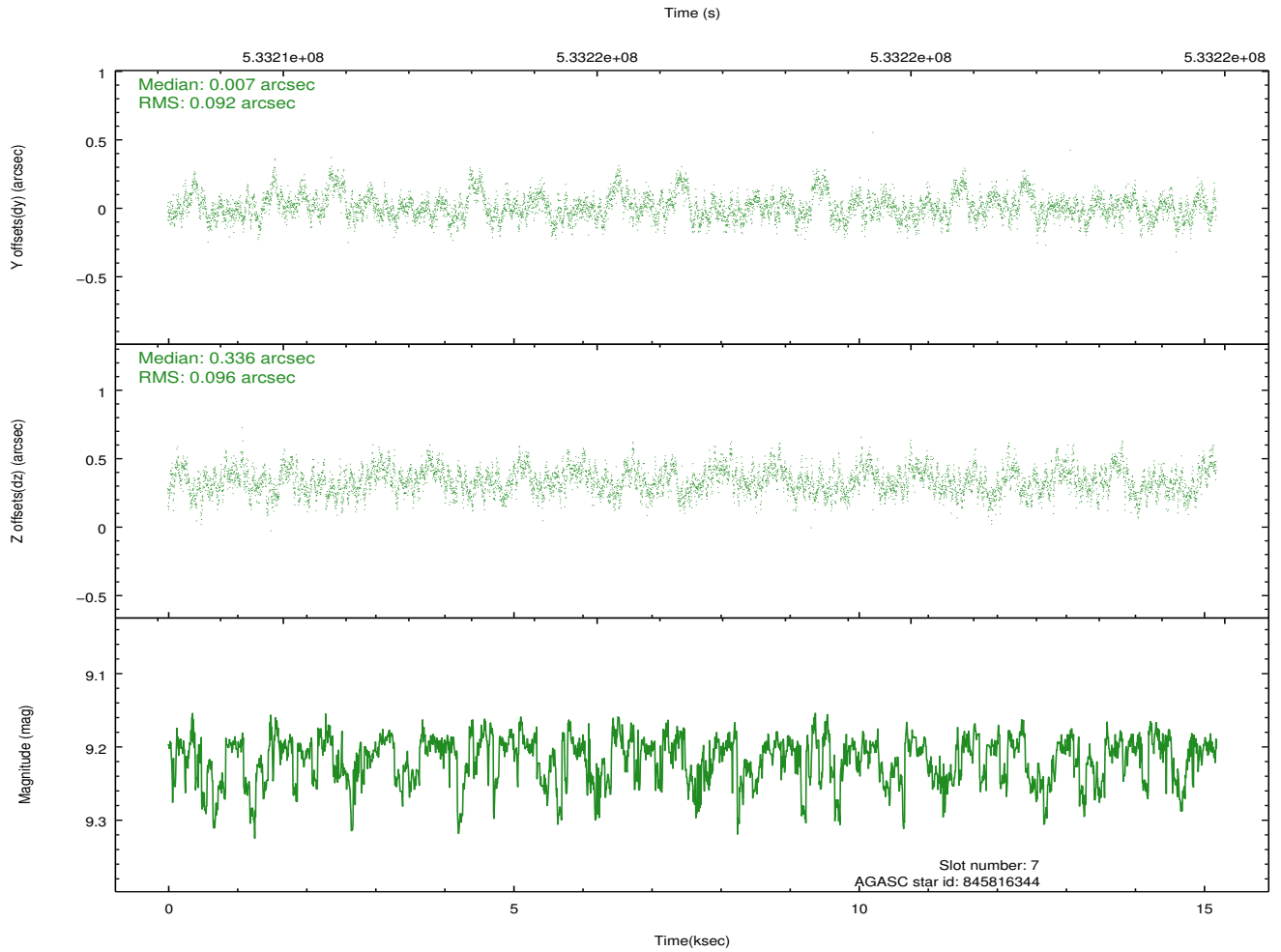
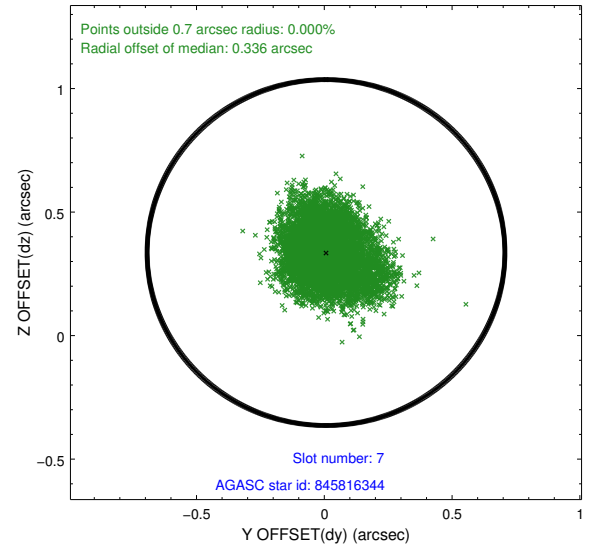
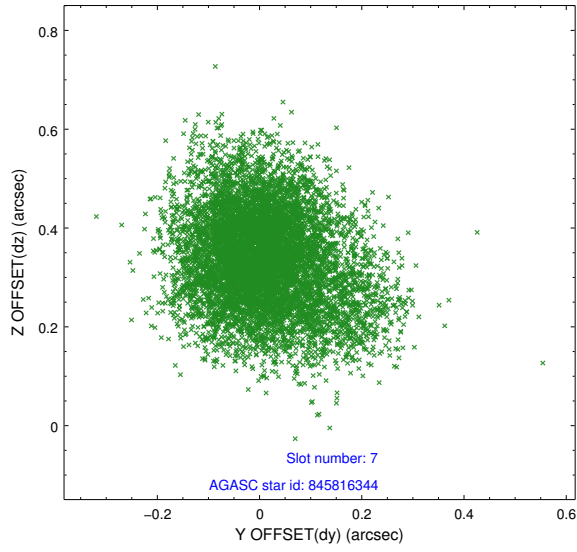
2.4.3 Slot 5



2.4.4 Slot 6

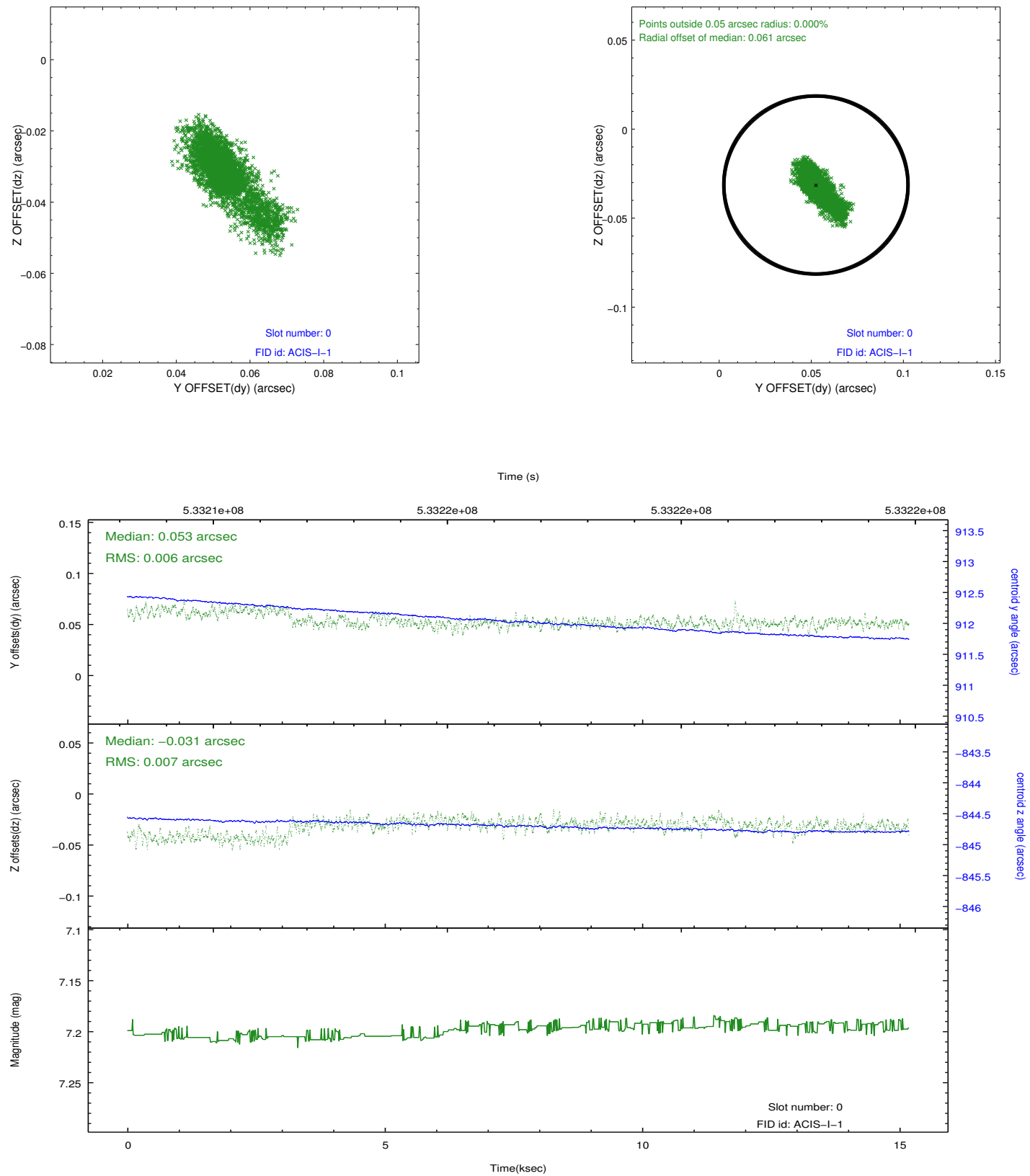


2.4.5 Slot 7

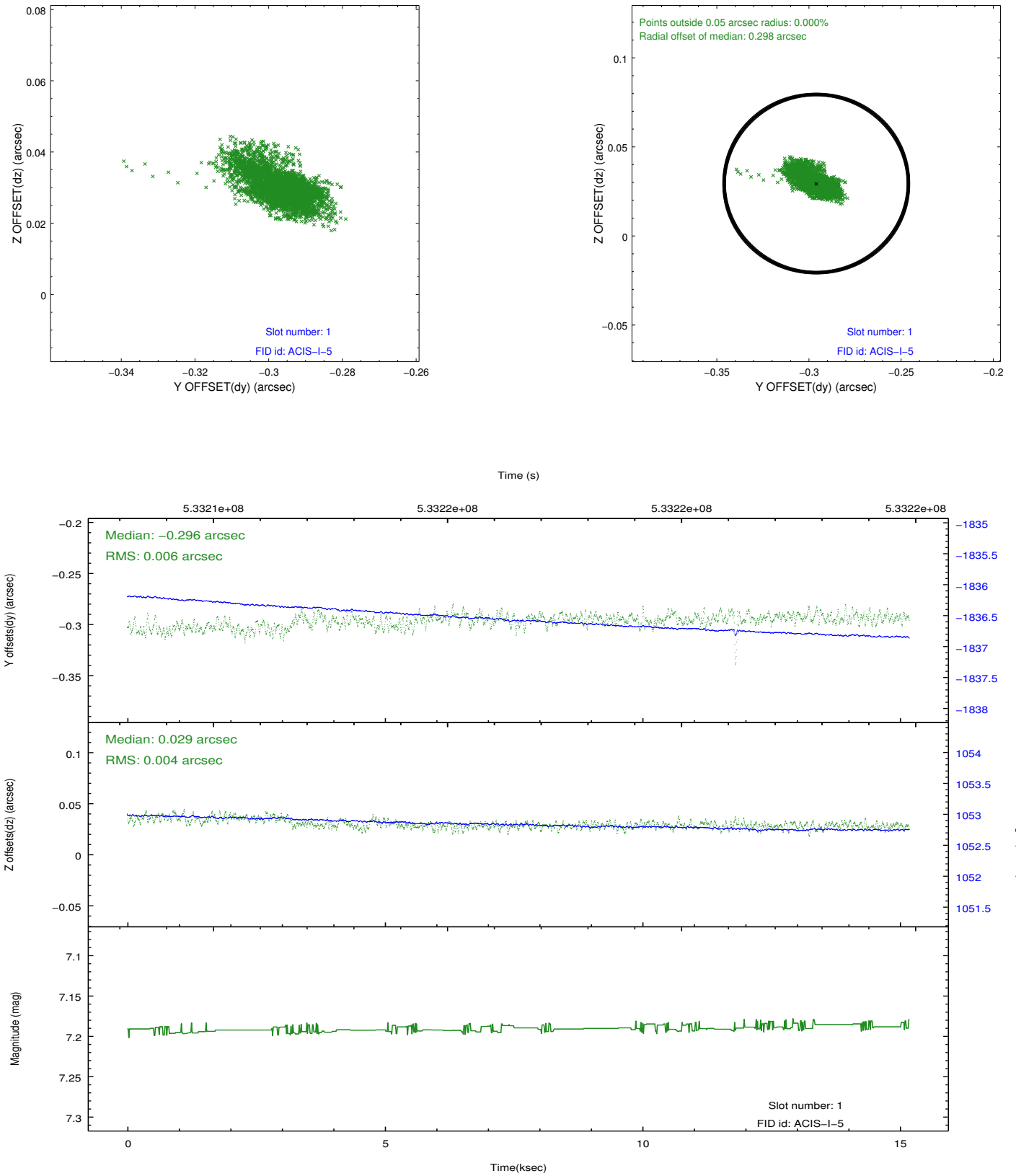


2.5 FID Slots

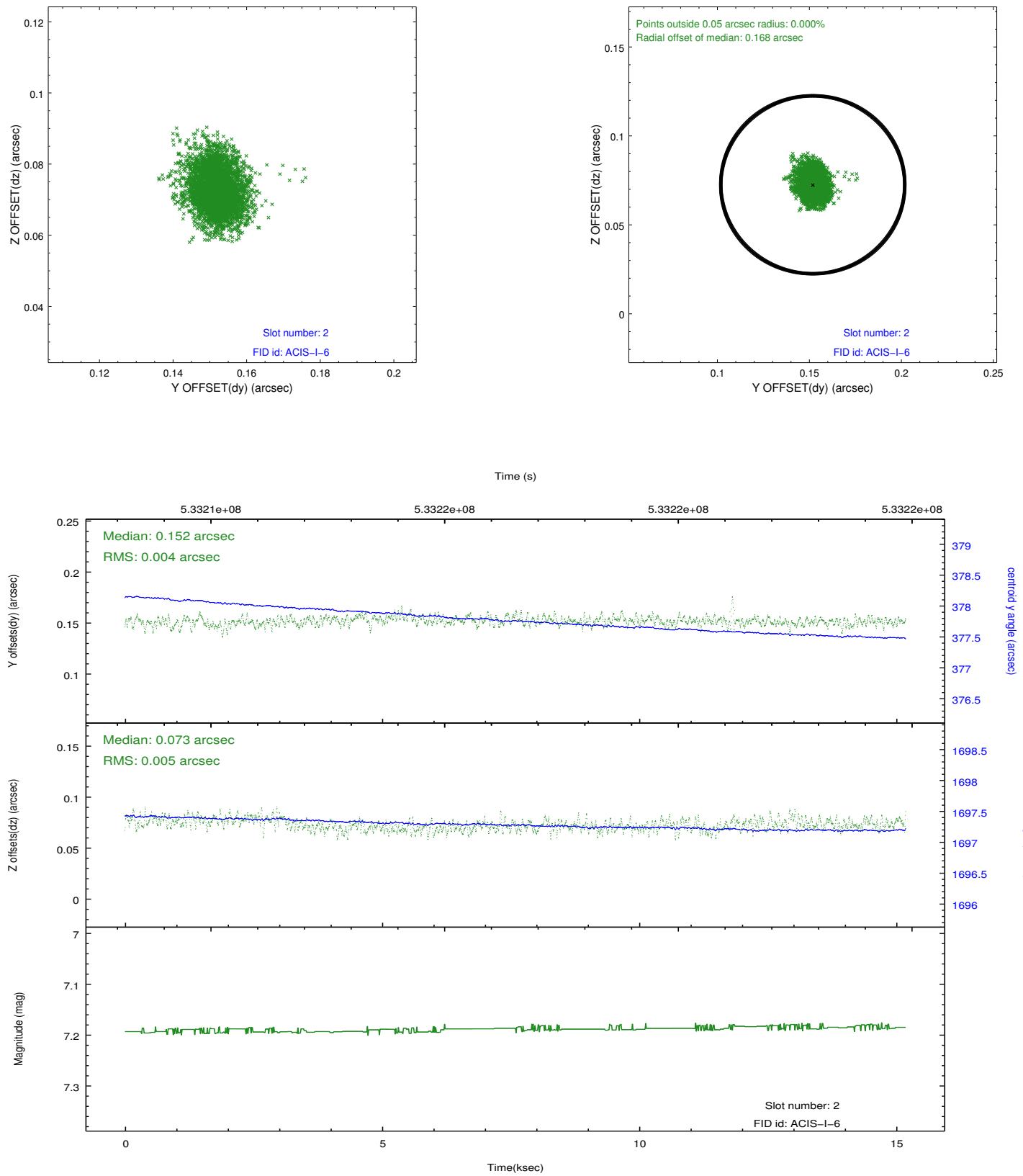
2.5.1 Slot 0



2.5.2 Slot 1



2.5.3 Slot 2



A Summary

A.1 Status

V&V Scientist	Jen Lauer
V&V Date (YYYY-MM-DD)	2014.11.25
V&V Edition	1
V&V Disposition and Status	OK
V&V Charge Time	14.780676962733

A.2 Comments

Roll preference met.