

V&V Reference Report

L2 ASCDS Version : 7.6.9

Observation 1611 - L2 Version 001
Chandra X-Ray Center

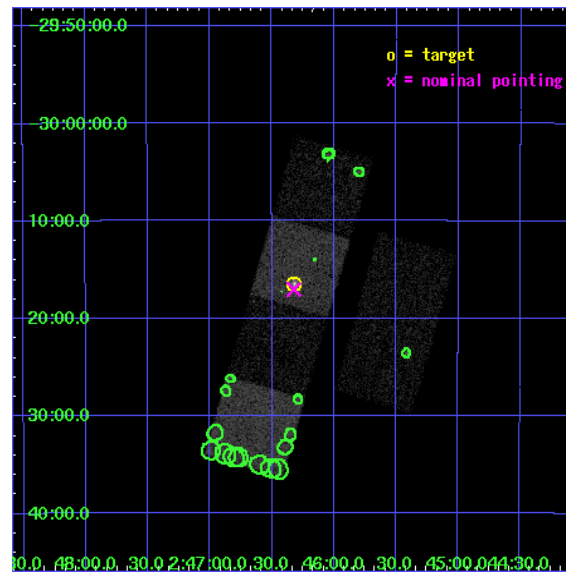
L2 Processing Date : Nov 4 2006

Contents

1	Front	2
2	OBI	3
2.1	OBI	3
2.1.1	Images	3
2.1.2	Bias	3
2.1.3	Parameters	4
2.1.4	Events	4
2.2	Compared Parameters	5
2.3	Aspect	6
2.4	Star Slots	9
2.4.1	Slot 4	9
2.4.2	Slot 5	10
2.4.3	Slot 6	11
2.4.4	Slot 7	12
2.5	FID Slots	13
2.5.1	Slot 0	13
2.5.2	Slot 1	14
2.5.3	Slot 2	15
3	Point Sources	16
A	Summary	17
A.1	Status	17
A.2	Comments	17

1 Front

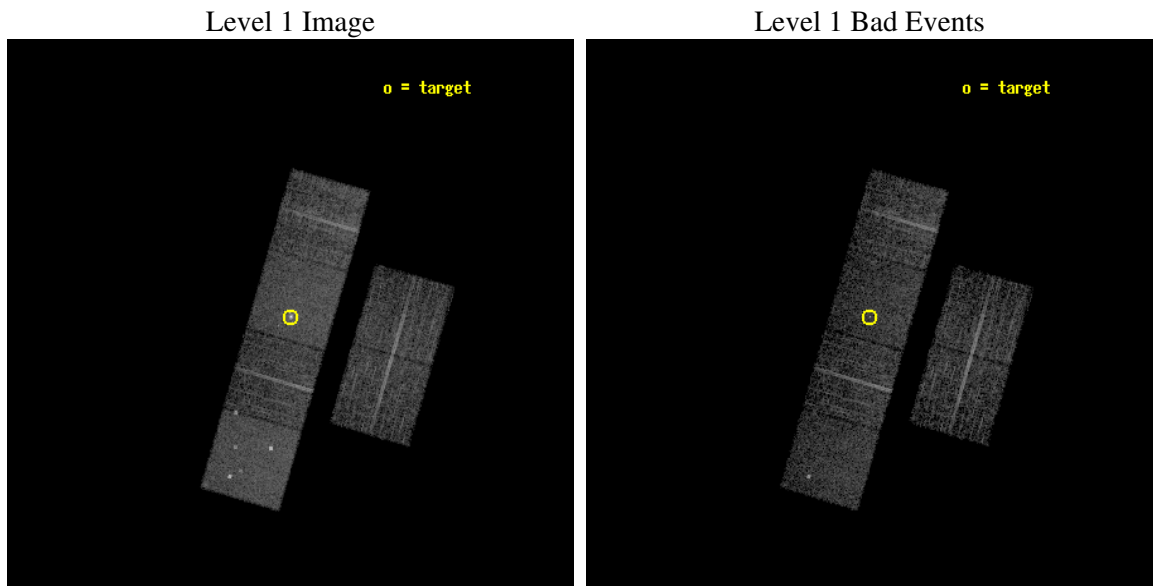
seq_num	700227
obs_id	1611
title	STUDIES OF RADIO JETS AND THE NARROW LINE REGIONS OF ACTIVE GALAXIES
observer	Prof. Andrew Wilson
object	NGC1097
dtcycle	0
cycle	P
ra_targ	41.579583
dec_targ	-30.274444
ra_nom	41.580801274294
dec_nom	-30.284170734162
roll_nom	286.13306869813
revision	2
ontime	5408.0000050366
livetime	5339.5206526662
ontime2	5408.0000050366
ontime3	5408.0000050366
ontime5	5408.0000050366
ontime6	5408.0000050366
ontime7	5408.0000050366
ontime8	5408.0000050366
l2events	50520



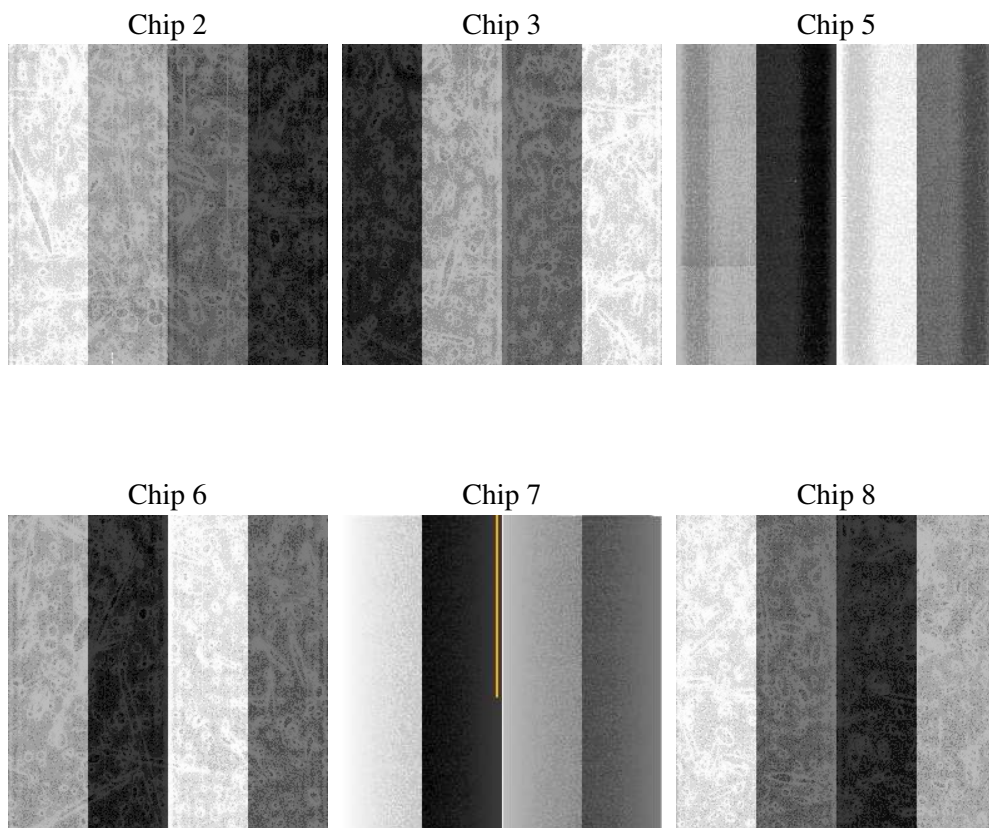
2 OBI

2.1 OBI

2.1.1 Images



2.1.2 Bias



2.1.3 Parameters

obi_num	0
ascdsver	7.6.9
caldbver	3.2.3
date	2006-11-04T10:16:09
revision	2

sched_exp_time	5468.926000
ontime	5412.4650484622
ontime2	5412.4650185406
ontime3	5412.4650484622
ontime5	5412.4650484622
ontime6	5412.4650185406
ontime7	5412.4650484622
ontime8	5412.4650484622
l1events	227627

2.1.4 Events

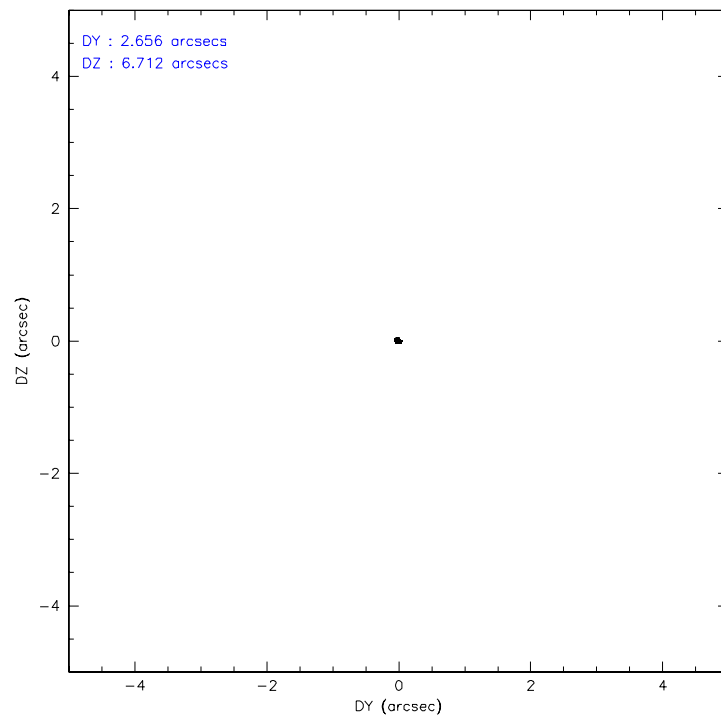
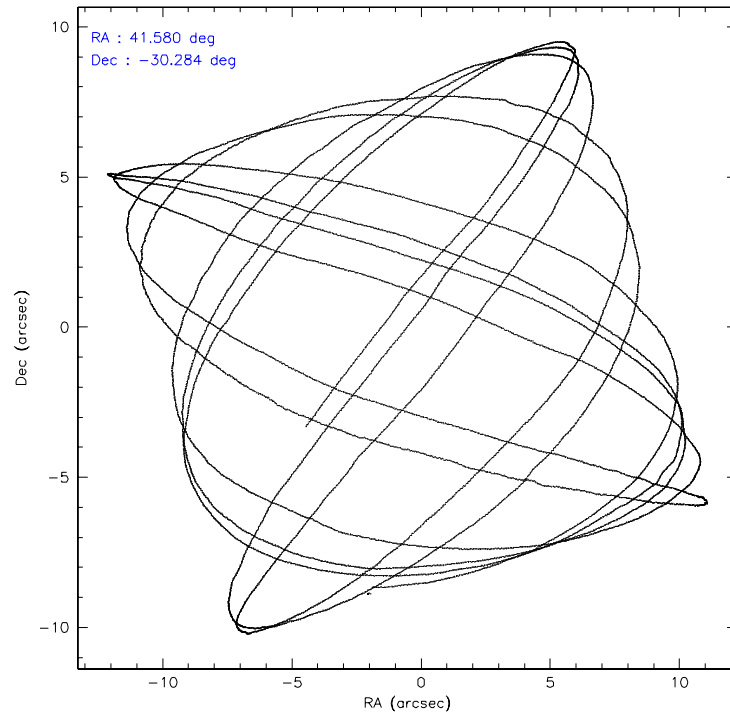
	ccd 2	ccd 3	ccd 5	ccd 6	ccd 7	ccd 8
level 1 events	31705	32226	46978	32090	44316	40312
rejected events	27776	28605	25222	28209	25419	31829
rejected %	87%	88%	53%	87%	57%	78%

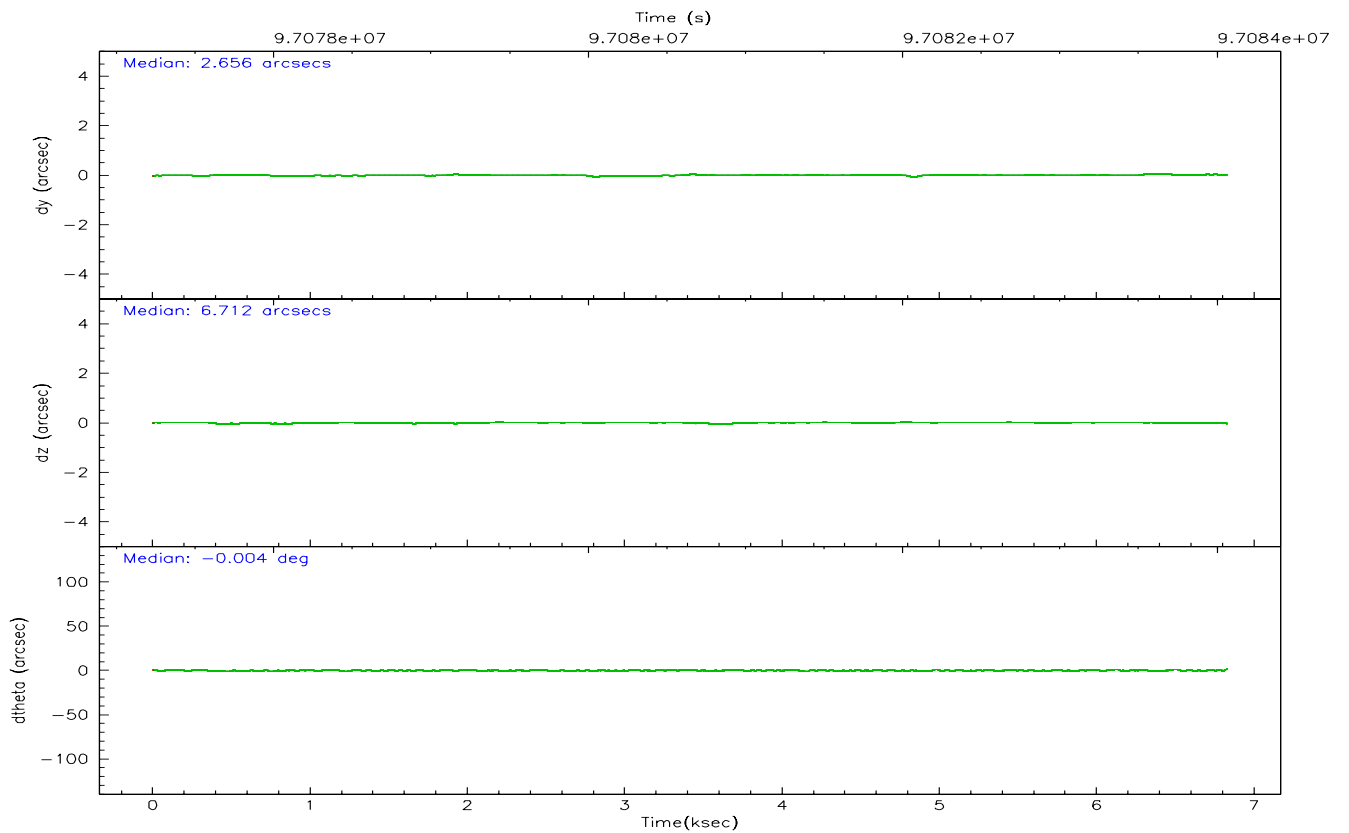
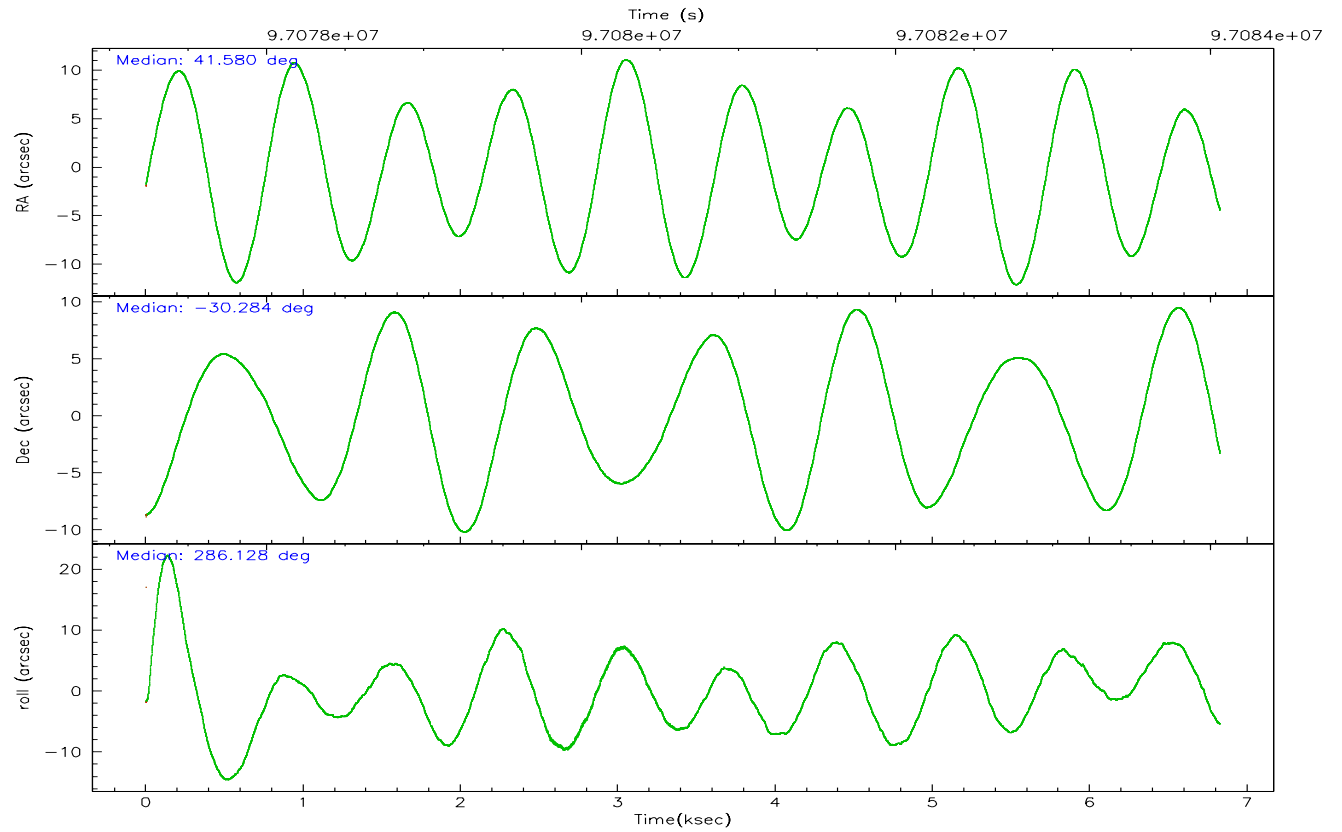
	ccd 2	ccd 3	ccd 5	ccd 6	ccd 7	ccd 8
grade 0 events	1825	1581	2586	1550	2160	2888
	5%	4%	5%	4%	4%	7%
grade 1 events	14	18	56	12	42	36
	0%	0%	0%	0%	0%	0%
grade 2 events	789	693	7144	776	4633	1765
	2%	2%	15%	2%	10%	4%
grade 3 events	342	335	543	412	1224	915
	1%	1%	1%	1%	2%	2%
grade 4 events	352	336	541	347	1212	841
	1%	1%	1%	1%	2%	2%
grade 5 events	1095	1262	2406	1308	2947	1632
	3%	3%	5%	4%	6%	4%
grade 6 events	624	679	10952	800	9679	2077
	1%	2%	23%	2%	21%	5%
grade 7 events	26664	27322	22750	26885	22419	30158
	84%	84%	48%	83%	50%	74%

2.2 Compared Parameters

Parameter	Planned	Actual	Parameter	Planned	Actual
Instrument	ACIS	ACIS	Obspar format version number	6	6
Detector	ACIS-235678	ACIS-235678	Obspar file type	PREDICTED	ACTUAL
Grating	NONE	NONE	Obspar update status	NONE	UPDATED
Data mode	VFAINT	VFAINT	Number of optional ACIS chips dropped	0	0
Observation mode	POINTING	POINTING	On-chip summing requested	N	N
Pointing RA	41.557733	41.58080127429363	Subarray requested	NONE	NONE
Pointing Dec	-30.265459	-30.28417073416156	Alternating exposures requested	N	N
Pointing Roll	285.964831	286.1330686981306	Primary exposure time	0.000000	3.2
SIM focus pos (mm)	-0.684267	-0.6828225247311905			
SIM defocus (mm)	0	0.001444936568705701			
SIM translation stage pos (mm)	-190.132523	-190.1400660498719			
SIM translation stage offset (mm)	0	0.00754346686406393			
Observation start time	97078595.184000	97077049.192764			
Observation start date	2001-01-28T14:15:31	2001-01-28T13:50:49			
Observation end time	97084064.184000	97084377.943046			
Observation end date	2001-01-28T15:46:40	2001-01-28T15:52:57			
Read mode	TIMED	TIMED			

2.3 Aspect



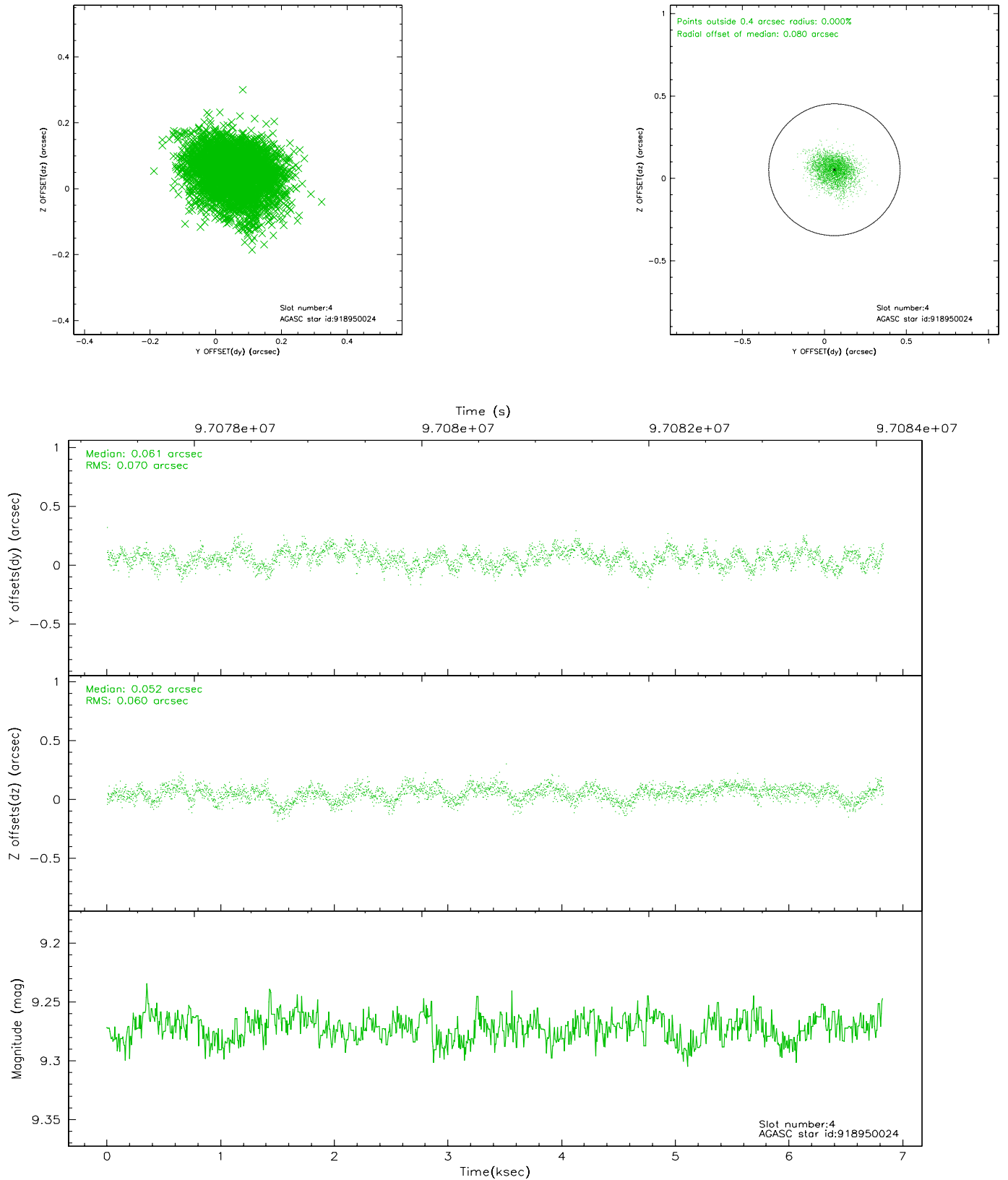


Slot Statistics

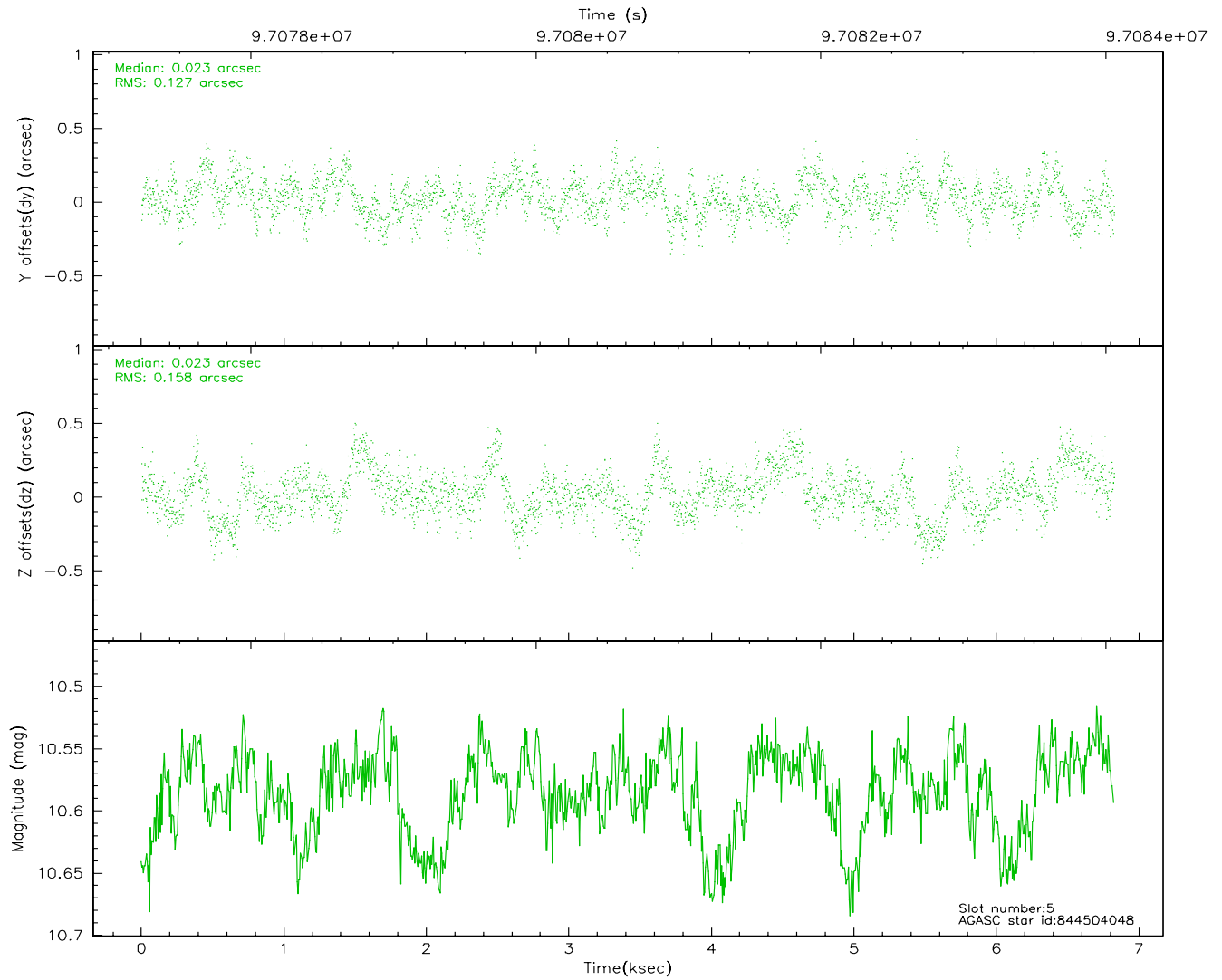
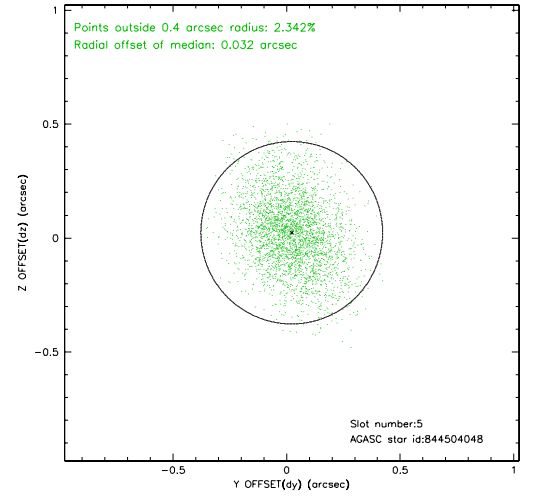
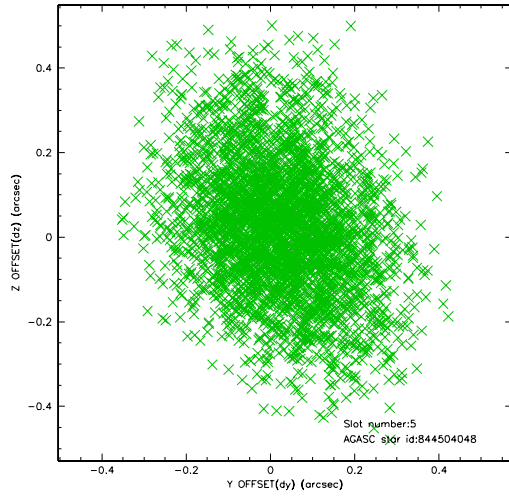
slot	status	id	mag	n_pts	med_dy	med_dz	dr1	dr2	ra	dec	mean_y	mean_z
0	FID	ACIS-S-2	7.12	1666	-0.000	0.034	0.006	0.011	0.000000	0.000000	-755.28	-1727.84
1	FID	ACIS-S-4	7.20	1666	-0.103	-0.009	0.005	0.009	0.000000	0.000000	2157.51	179.74
2	FID	ACIS-S-5	7.24	1666	0.072	-0.017	0.006	0.009	0.000000	0.000000	-1806.96	174.35
3	UNUSED		0.00	0	0.000	0.000	0.000	0.000	0.000000	0.000000	0.00	0.00
4	GUIDE	918950024	9.27	3332	0.061	0.052	0.099	0.160	41.512438	-30.524479	858.82	-390.67
5	GUIDE	844504048	10.58	3330	0.023	0.023	0.217	0.359	41.982243	-29.569526	-2039.80	1966.96
6	GUIDE	843590712	9.83	3331	-0.129	-0.108	0.120	0.197	41.013881	-29.926522	-1635.72	-1295.86
7	GUIDE	918953472	10.18	3330	0.046	0.033	0.138	0.228	41.953343	-30.707298	1868.43	739.80

2.4 Star Slots

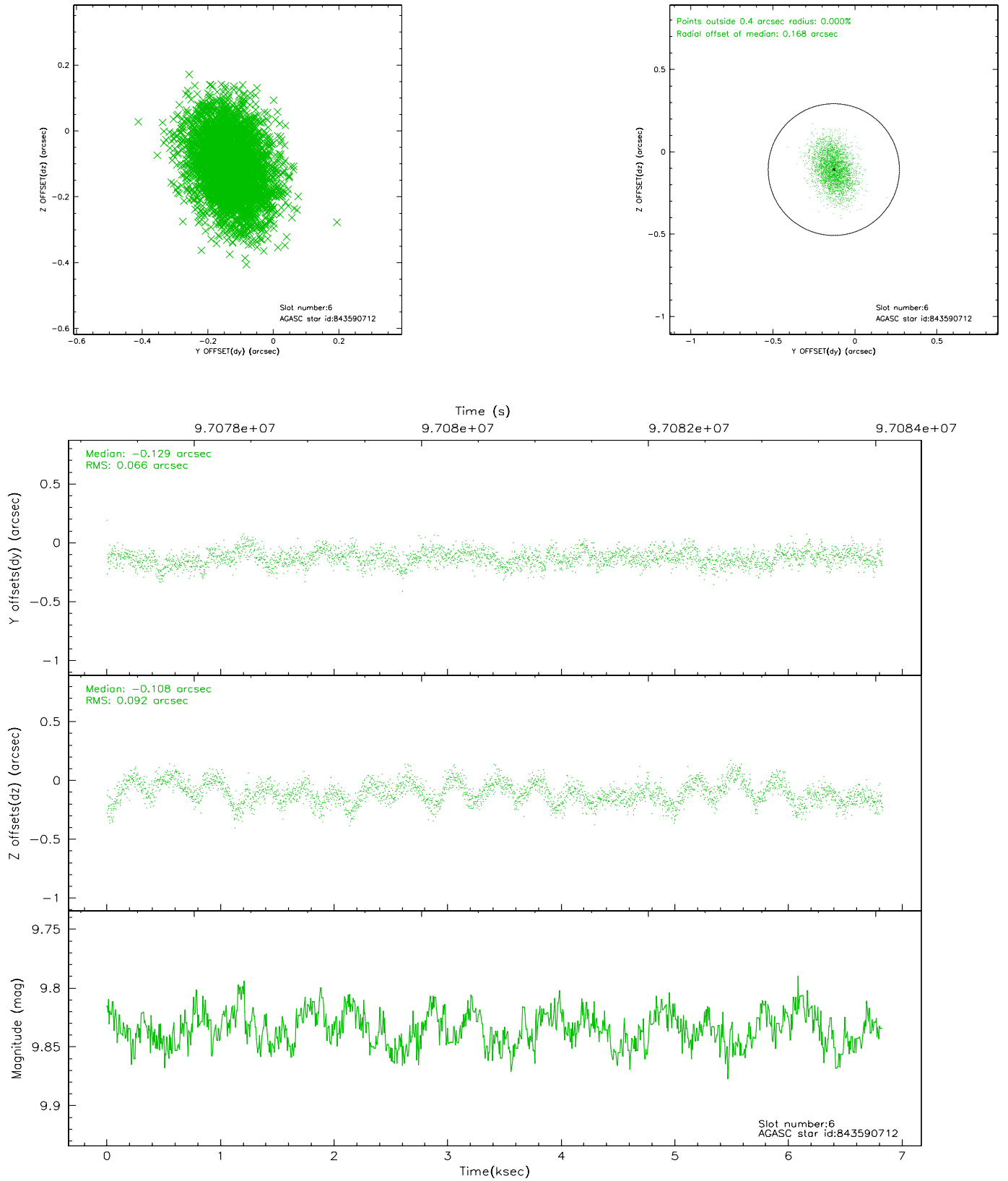
2.4.1 Slot 4



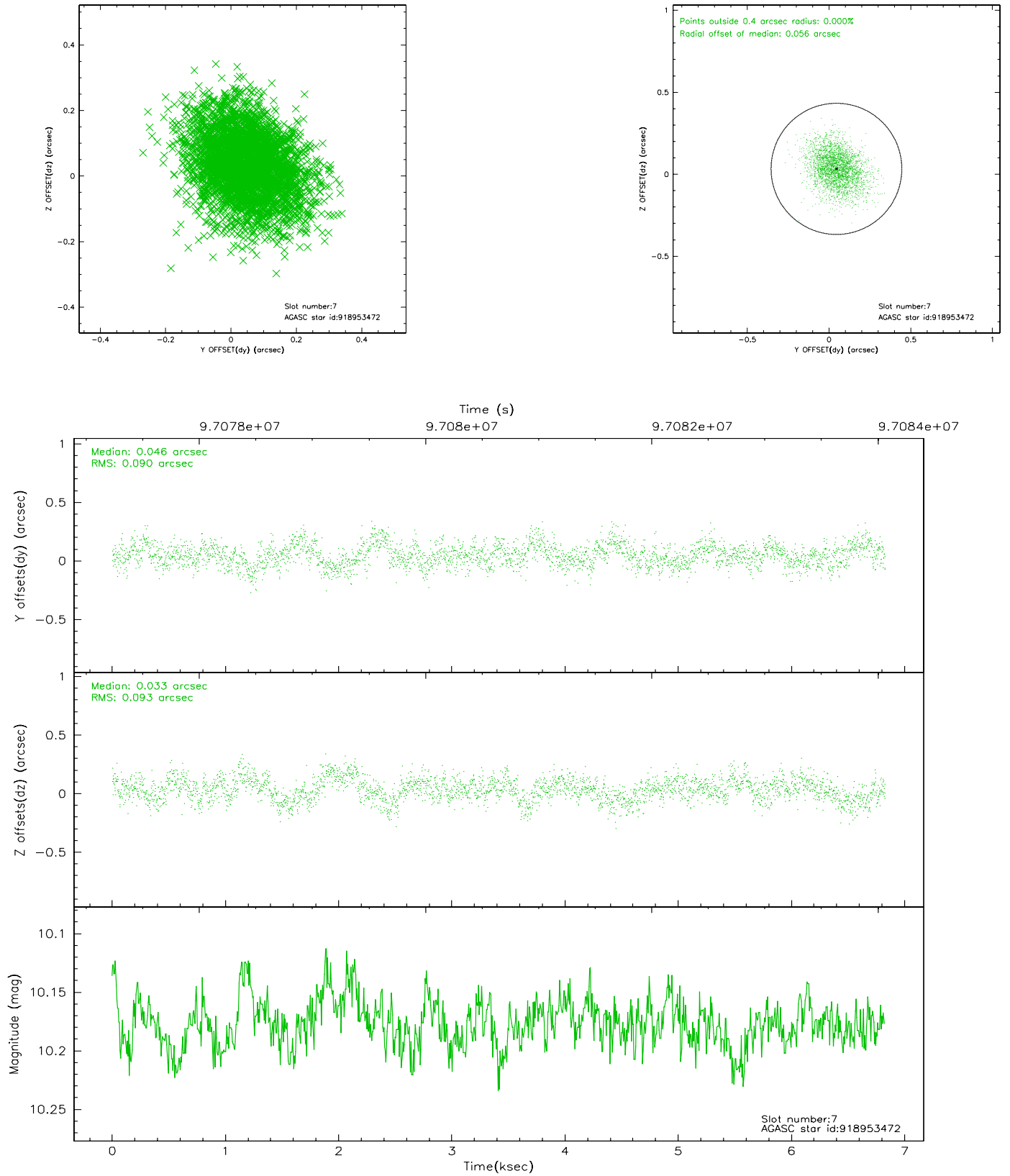
2.4.2 Slot 5



2.4.3 Slot 6

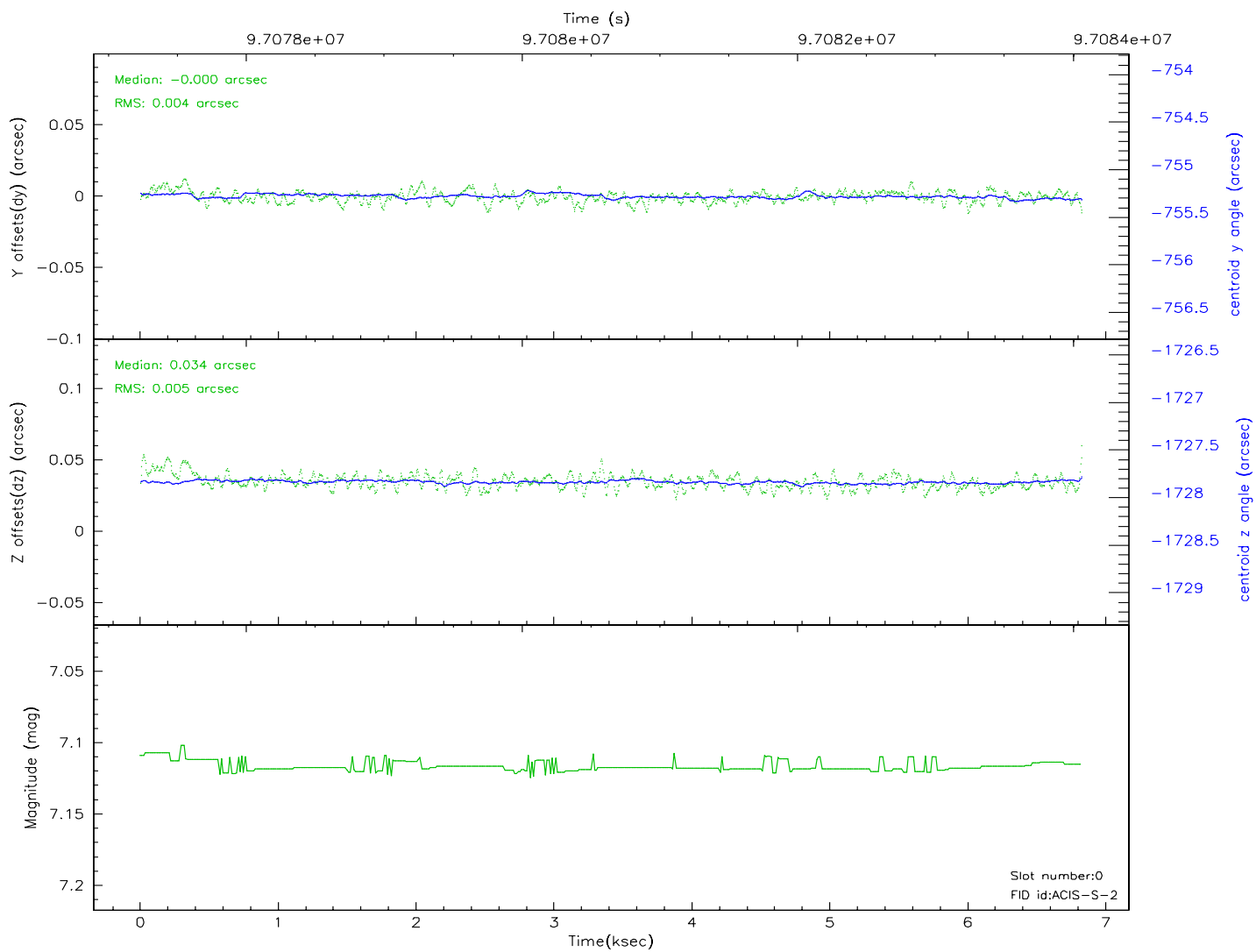
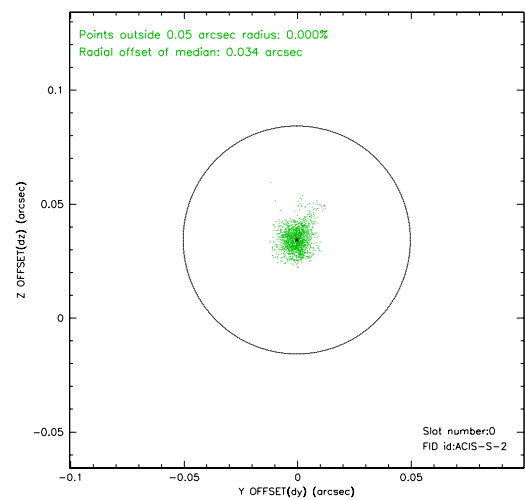
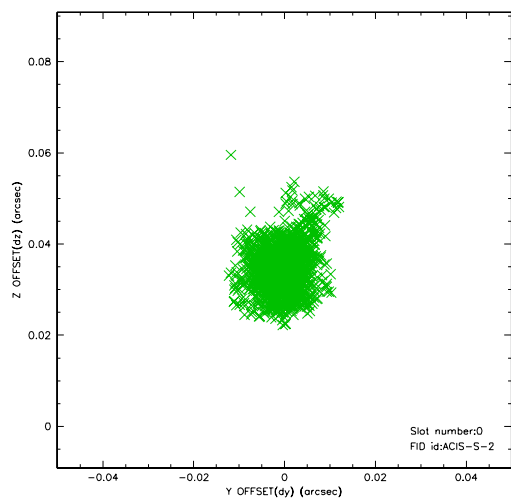


2.4.4 Slot 7

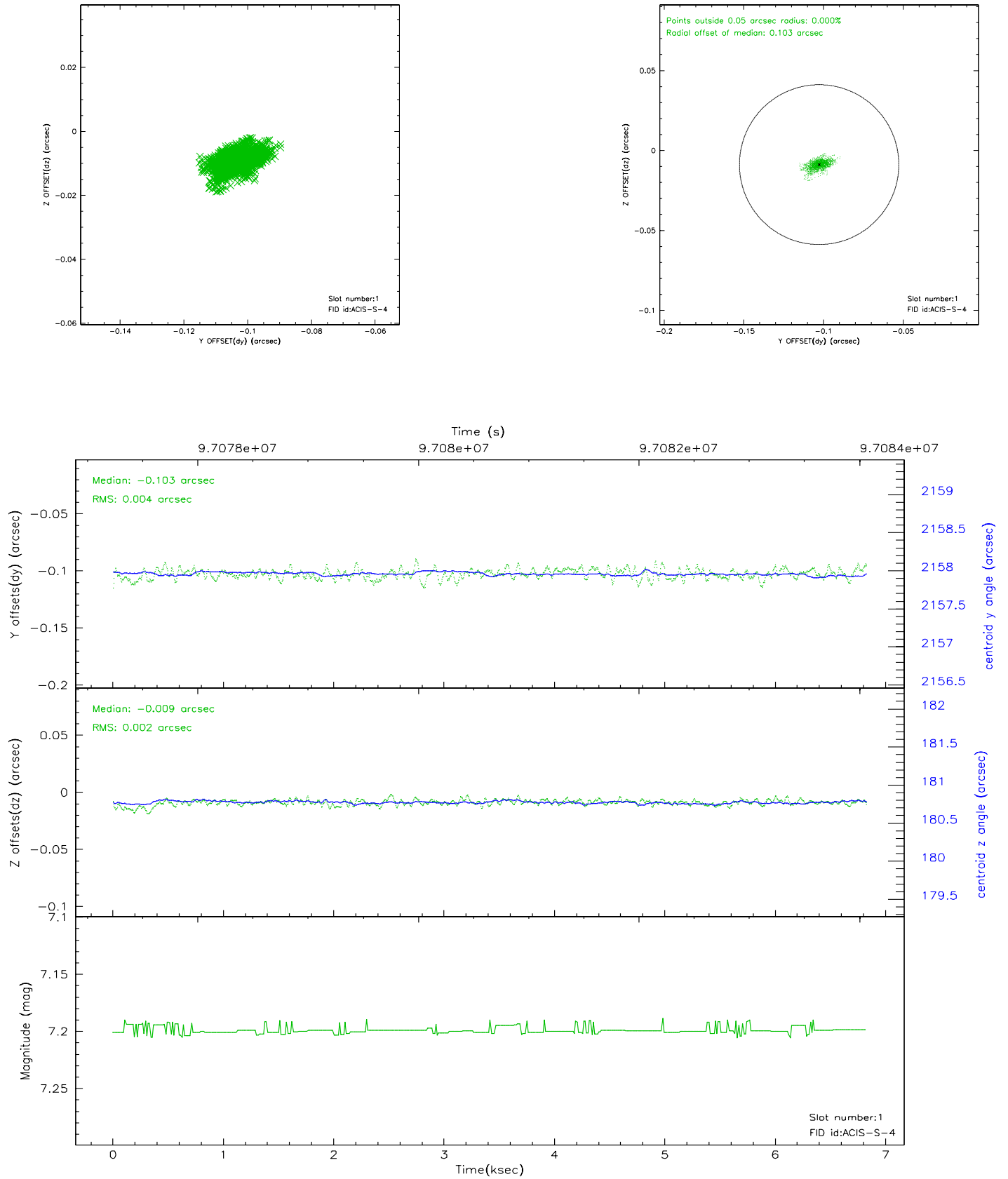


2.5 FID Slots

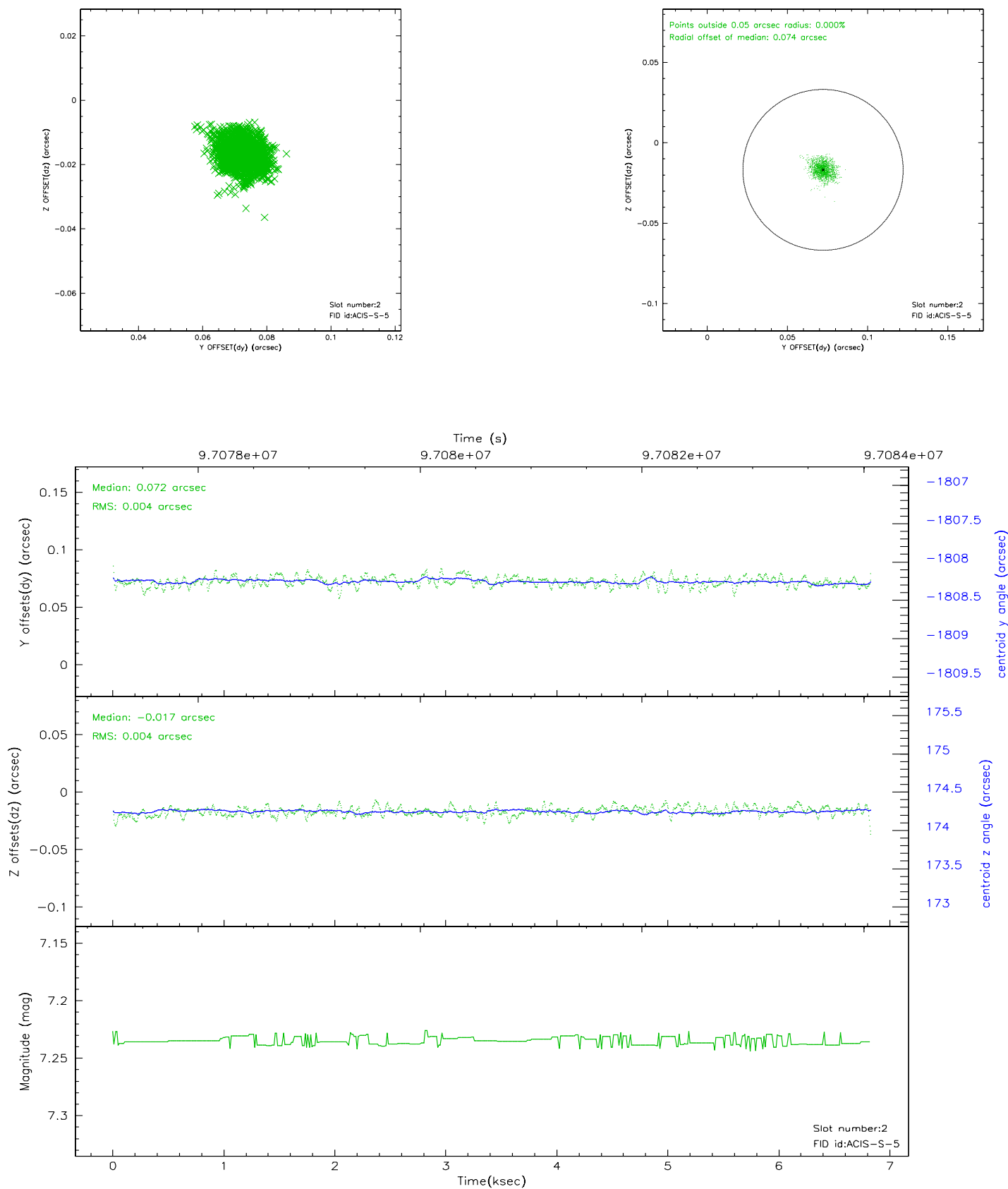
2.5.1 Slot 0



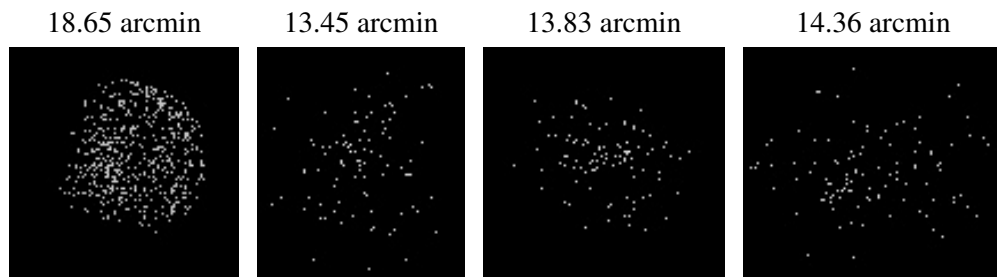
2.5.2 Slot 1



2.5.3 Slot 2



3 Point Sources



A Summary

A.1 Status

V&V Scientist	Beth Sundheim
V&V Date (YYYY-MM-DD)	2006.11.06
V&V Edition	1
V&V Disposition and Status	OK
V&V Charge Time	5.411

A.2 Comments