

# V&V Reference Report

## L2 ASCDS Version : 10.2.4

Observation 15721 - L2 Version 1  
Chandra X-Ray Center

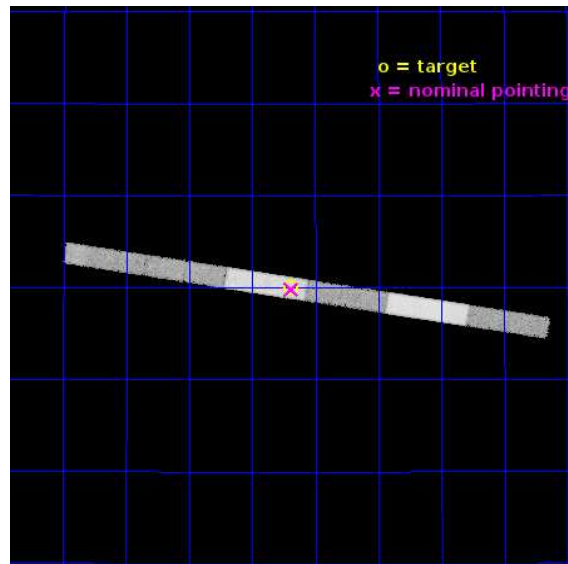
L2 Processing Date : Aug 2 2014

## Contents

<b>1</b>	<b>Front</b>	<b>2</b>
<b>2</b>	<b>OBI</b>	<b>3</b>
2.1	OBI . . . . .	3
2.1.1	Images . . . . .	3
2.1.2	Bias . . . . .	3
2.1.3	Parameters . . . . .	4
2.1.4	Events . . . . .	4
2.2	Compared Parameters . . . . .	5
2.3	Aspect . . . . .	6
2.4	Star Slots . . . . .	9
2.4.1	Slot 3 . . . . .	9
2.4.2	Slot 4 . . . . .	10
2.4.3	Slot 5 . . . . .	11
2.4.4	Slot 6 . . . . .	12
2.4.5	Slot 7 . . . . .	13
2.5	FID Slots . . . . .	14
2.5.1	Slot 0 . . . . .	14
2.5.2	Slot 1 . . . . .	15
2.5.3	Slot 2 . . . . .	16
<b>A</b>	<b>Summary</b>	<b>17</b>
A.1	Status . . . . .	17
A.2	Comments . . . . .	17

# 1 Front

seq_num	200934	Sequence number
obs_id	15721	Observation id
title	Do exoplanets spin up their host stars?	Proposal title
observer	Dr Katja Poppenhaeger	Principal investigator
object	HD 185269	Source name
dtcycle	0	&#160
cycle	P	events from which exps? Prim/Second/Both
ra_targ	294.29875	Observer's specified target RA [deg]
dec_targ	28.499861	Observer's specified target Dec [deg]
ra_nom	294.29729958997	Nominal RA [deg]
dec_nom	28.497023735995	Nominal Dec [deg]
roll_nom	189.15731106119	Nominal Roll [deg]
revision	1	Processing version of data
ontime	53402.801157475	Sum of GTIs [s]
livetime	51482.052577668	Livetime [s]
ontime4	53402.797227025	Sum of GTIs [s]
ontime5	53402.801157475	Sum of GTIs [s]
ontime6	53402.801157475	Sum of GTIs [s]
ontime7	53402.801157475	Sum of GTIs [s]
ontime8	53402.801157475	Sum of GTIs [s]
ontime9	53401.660117328	Sum of GTIs [s]
l2events	126713	Number of level 2 events

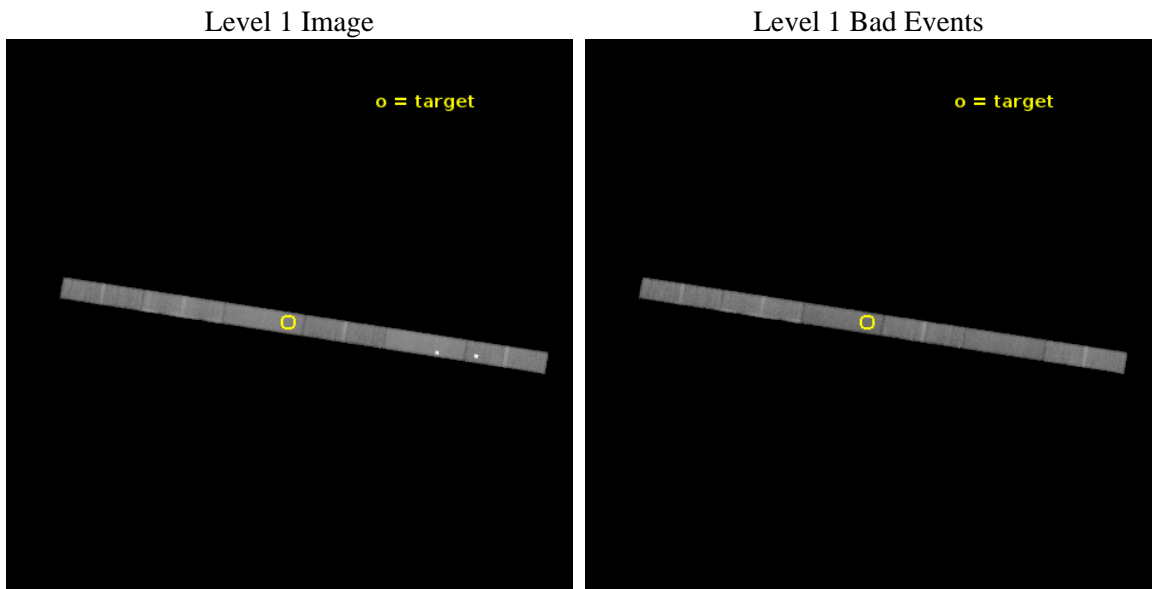




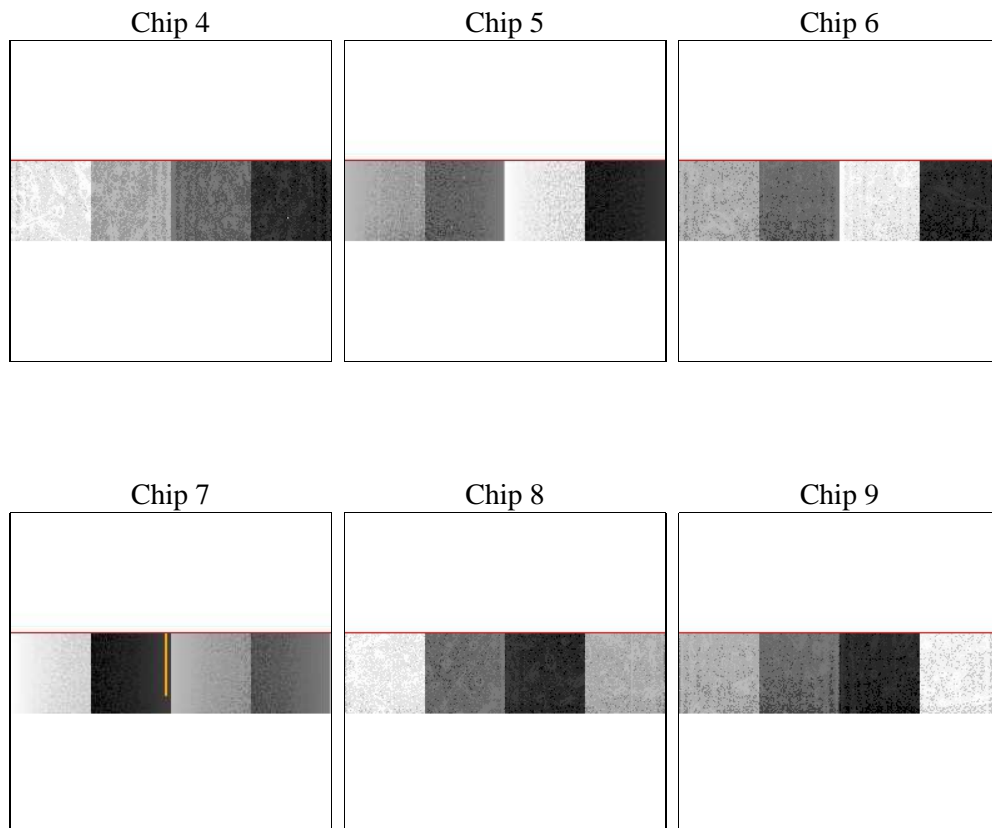
## 2 OBI

### 2.1 OBI

#### 2.1.1 Images



#### 2.1.2 Bias



### 2.1.3 Parameters

obi_num	1	Obi number	sched_exp_time	53329.000000	[s] Scheduled observation exposure time
ascdsver	10.2.4	Processing system revision	ontime	53402.801157475	Sum of GTIs [s]
caldsver	4.6.2	&#160	ontime4	53402.797227025	Sum of GTIs [s]
date	2014-08-02T19:23:34	Date and time of file creation	ontime5	53402.801157475	Sum of GTIs [s]
revision	1	Processing version of data	ontime6	53402.801157475	Sum of GTIs [s]
			ontime7	53402.801157475	Sum of GTIs [s]
			ontime8	53402.801157475	Sum of GTIs [s]
			ontime9	53401.660117328	Sum of GTIs [s]
			l1events	635301	Number of level 1 events

### 2.1.4 Events

	ccd 4	ccd 5	ccd 6	ccd 7	ccd 8	ccd 9		ccd 4	ccd 5	ccd 6	ccd 7	ccd 8	ccd 9
level 1 events	131842	148094	77351	97960	104280	75774	grade 0 events	45429	38271	2786	4207	6360	3235
rejected events	79587	59451	68135	54111	80187	66107		34%	25%	3%	4%	6%	4%
rejected %	60%	40%	88%	55%	76%	87%	grade 1 events	130	244	21	121	43	30
								0%	0%	0%	0%	0%	0%
							grade 2 events	2280	16599	1824	8898	5578	1830
								1%	11%	2%	9%	5%	2%
							grade 3 events	1420	2511	1265	4558	2714	1362
								1%	1%	1%	4%	2%	1%
							grade 4 events	1370	2411	1313	4526	2570	1335
								1%	1%	1%	4%	2%	1%
							grade 5 events	3760	8932	3628	10043	5103	3889
								2%	6%	4%	10%	4%	5%
							grade 6 events	1756	28854	2028	21661	6874	1905
								1%	19%	2%	22%	6%	2%
							grade 7 events	75697	50272	64486	43946	75038	62188
								57%	33%	83%	44%	71%	82%

## 2.2 Compared Parameters

Parameter	Planned	Actual	Parameter	Planned	Actual
Instrument	ACIS	ACIS	Obspar format version number	7	7
Detector	ACIS-456789	ACIS-456789	Obspar file type	PREDICTED	ACTUAL
Grating	NONE	NONE	Obspar update status	NONE	UPDATED
Data mode	VFAINT	VFAINT	CCD I0 on	N	N
Observation mode	POINTING	POINTING	CCD I1 on	N	N
[deg] Pointing RA	294.321239	294.2972995899726	CCD I2 on	N	N
[deg] Pointing Dec	28.514634	28.497023735995	CCD I3 on	N	N
[deg] Pointing Roll	188.989269	189.1573110611853	CCD S0 on	O1	Y
[mm] SIM focus pos	-0.684267	-0.6828225247311905	CCD S1 on	O3	Y
[mm] SIM defocus	0	0.001444936568705701	CCD S2 on	O5	Y
[mm] SIM translation stage pos	-190.132523	-190.1425803651734	CCD S3 on	Y	Y
[mm] SIM translation stage offset	0	0.01005778216563158	CCD S4 on	O4	Y
[s] Observation start time (MET)	523283111.184000	523281830.36948	CCD S5 on	O2	Y
Observation start date	2014-08-01T12:24:04	2014-08-01T12:03:50	Number of optional ACIS chips dropped	0	0
[s] Observation end time (MET)	523336440.184000	523337501.19757	On-chip summing requested	N	N
Observation end date	2014-08-02T03:12:53	2014-08-02T03:31:41	Subarray requested	CUSTOM	1/4
Read mode	TIMED	TIMED	Subarray start row	385	385
			Subarray row count	256	256
			Alternating exposures requested	N	N
			[s] Primary exposure time	0.000000	1.1

## 2.3 Aspect

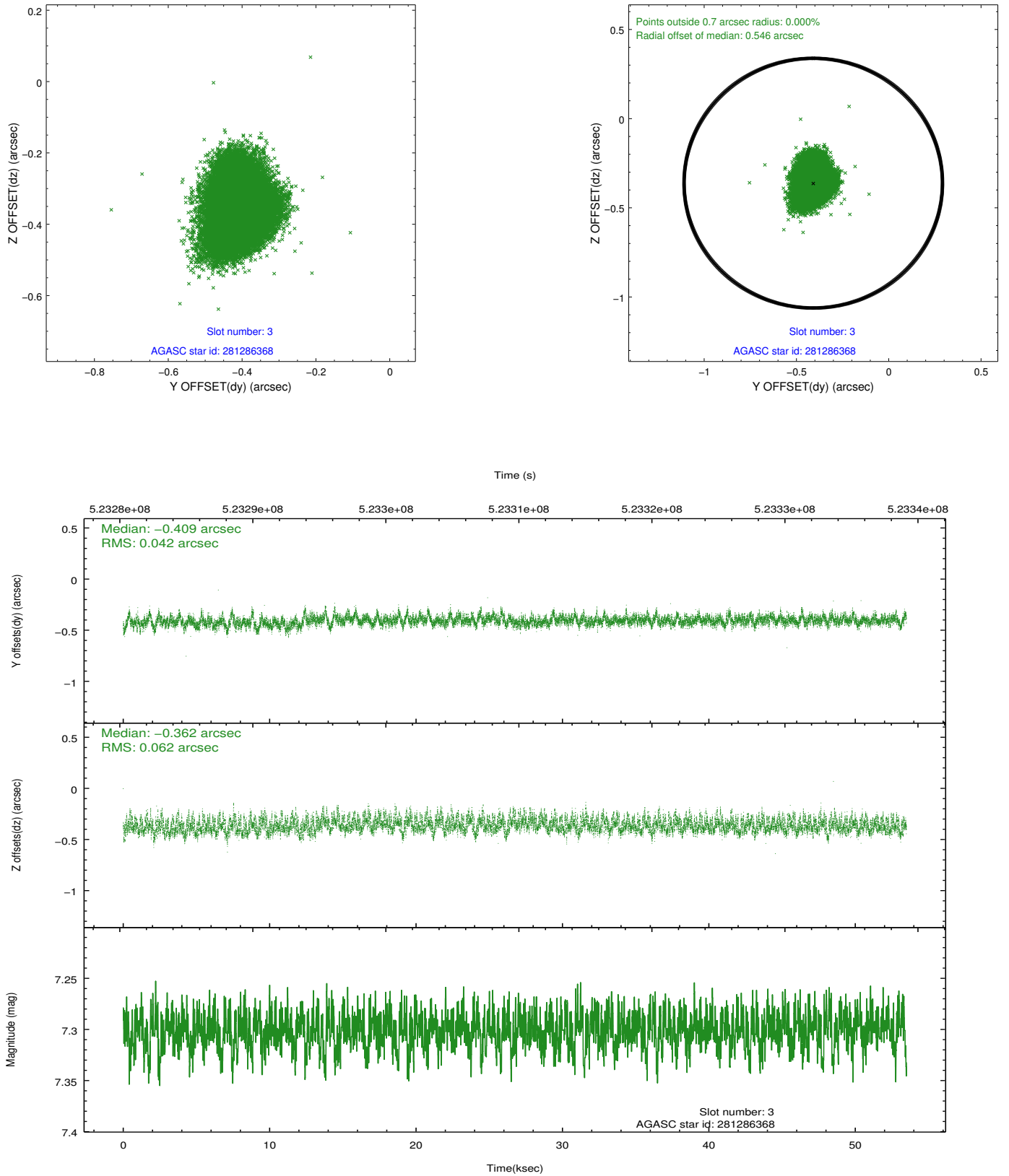


### Slot Statistics

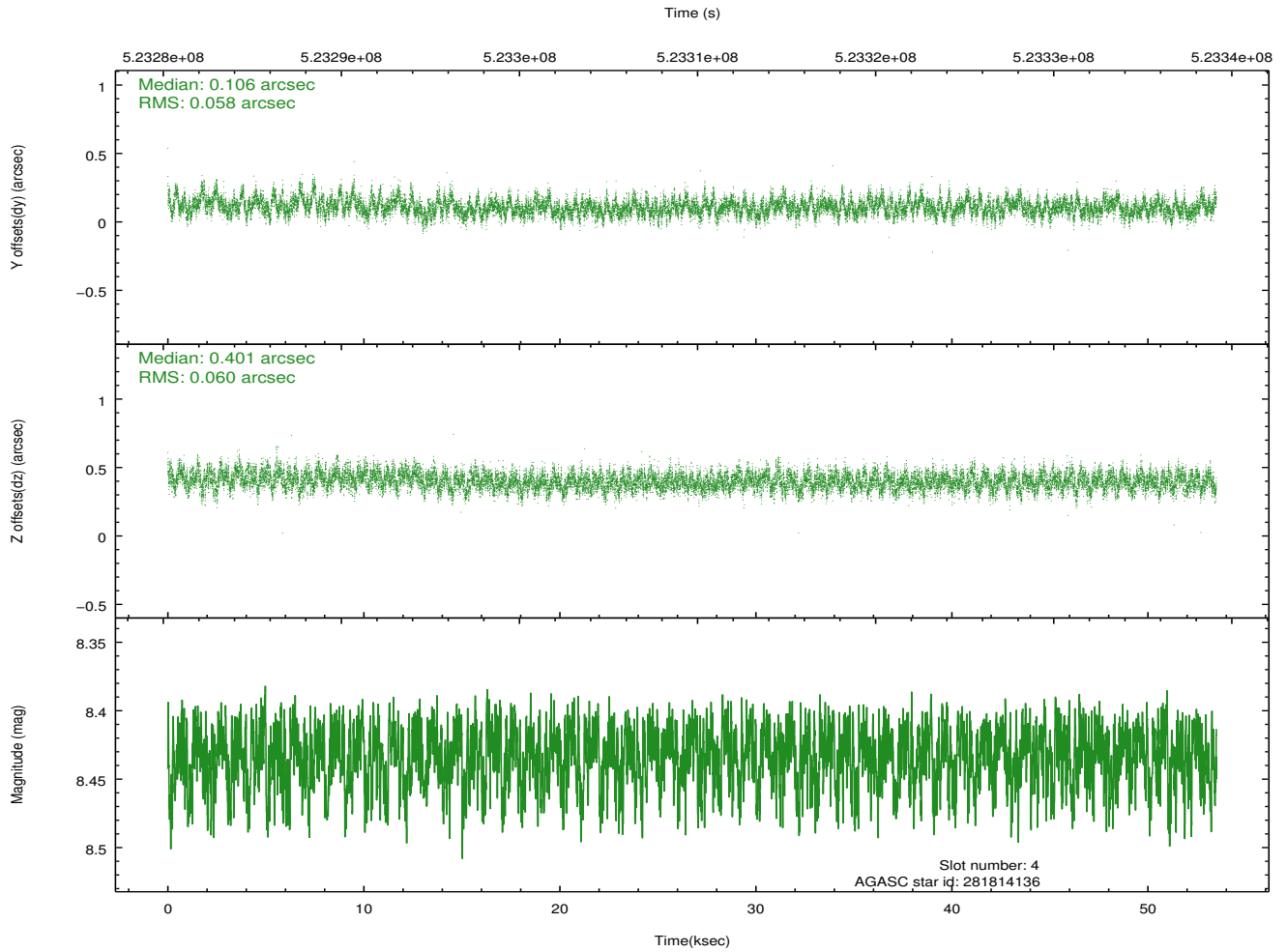
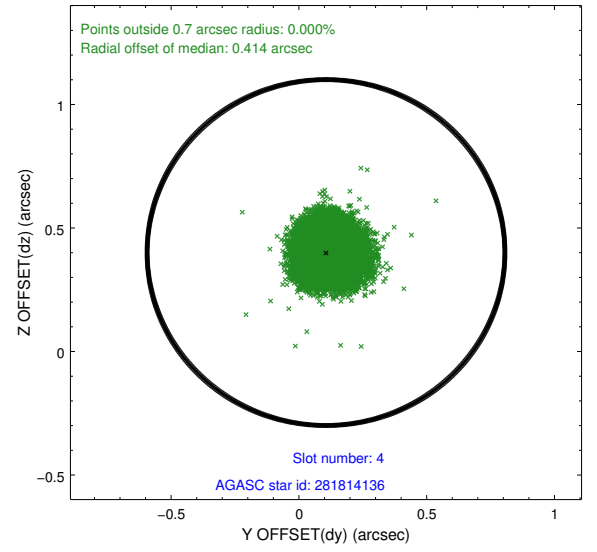
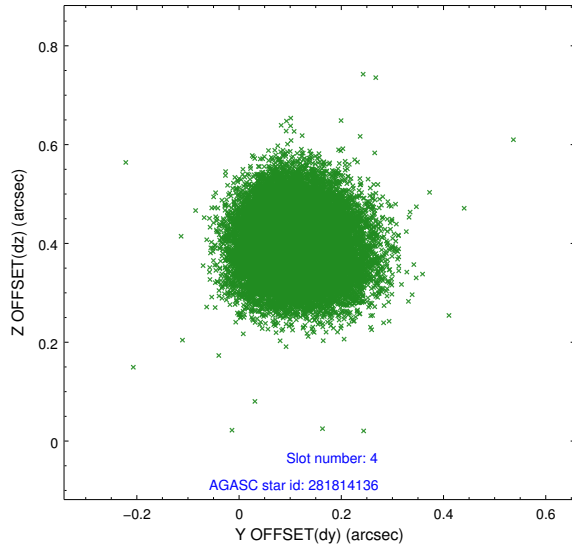
slot	status	id	mag	n_pts	med_dy	med_dz	dr1	dr2	ra	dec	mean_y	mean_z
0	FID	ACIS-S-4	7.14	13048	0.233	0.007	0.013	0.038	0.000000	0.000000	2138.84	168.06
1	FID	ACIS-S-5	7.18	13047	-0.242	0.009	0.014	0.077	0.000000	0.000000	-1827.88	161.48
2	FID	ACIS-S-6	7.28	13048	-0.017	-0.002	0.011	0.037	0.000000	0.000000	386.87	805.24
3	GUIDE	281286368	7.30	26095	-0.409	-0.362	0.079	0.131	293.839484	27.863772	1879.84	2072.03
4	GUIDE	281814136	8.43	26085	0.106	0.401	0.088	0.142	294.912285	29.066106	-2147.11	-1674.43
5	GUIDE	281815712	8.69	26082	-0.022	-0.109	0.106	0.168	294.886982	28.146559	-1567.58	1584.99
6	GUIDE	281823336	8.28	26085	0.139	0.191	0.093	0.153	294.300252	28.795357	-91.87	-1007.97
7	GUIDE	281810104	9.68	25515	0.193	-0.122	0.221	0.365	293.609784	29.083073	1890.97	-2377.10

## 2.4 Star Slots

### 2.4.1 Slot 3

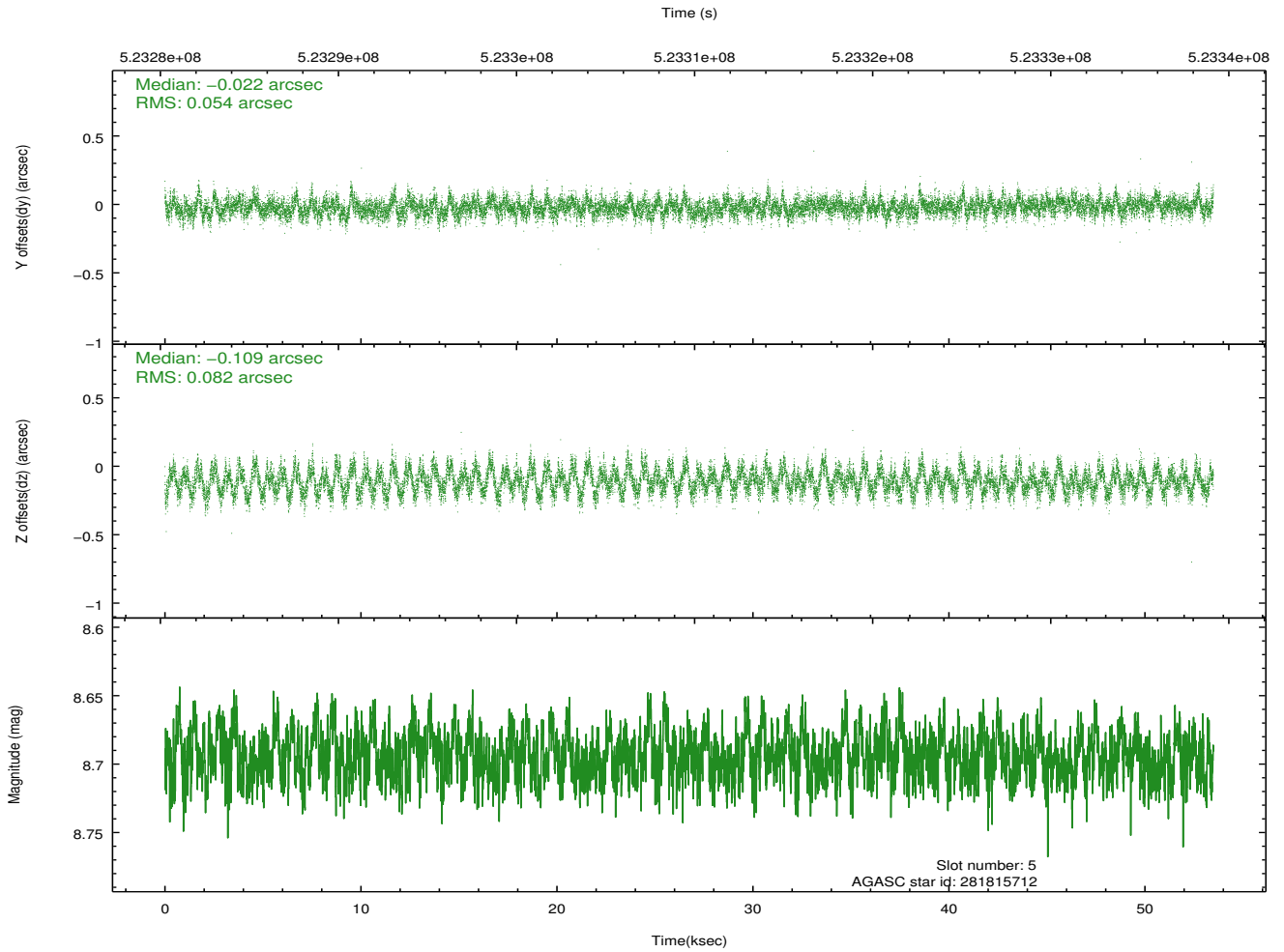
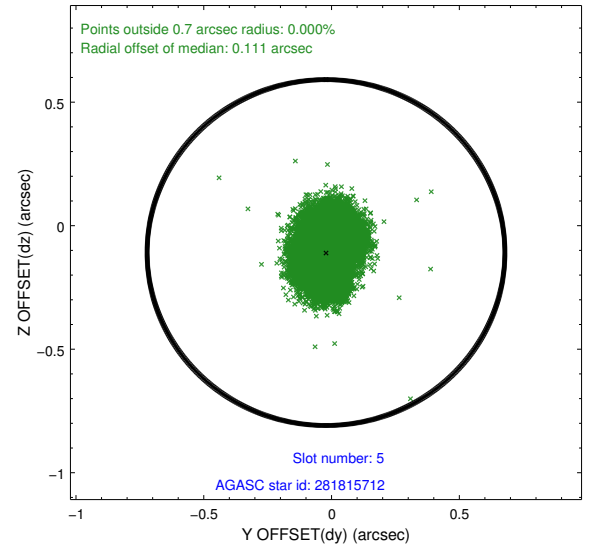
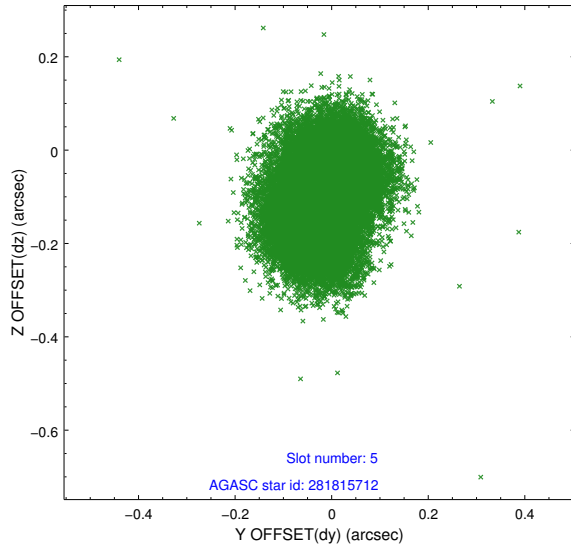


## 2.4.2 Slot 4

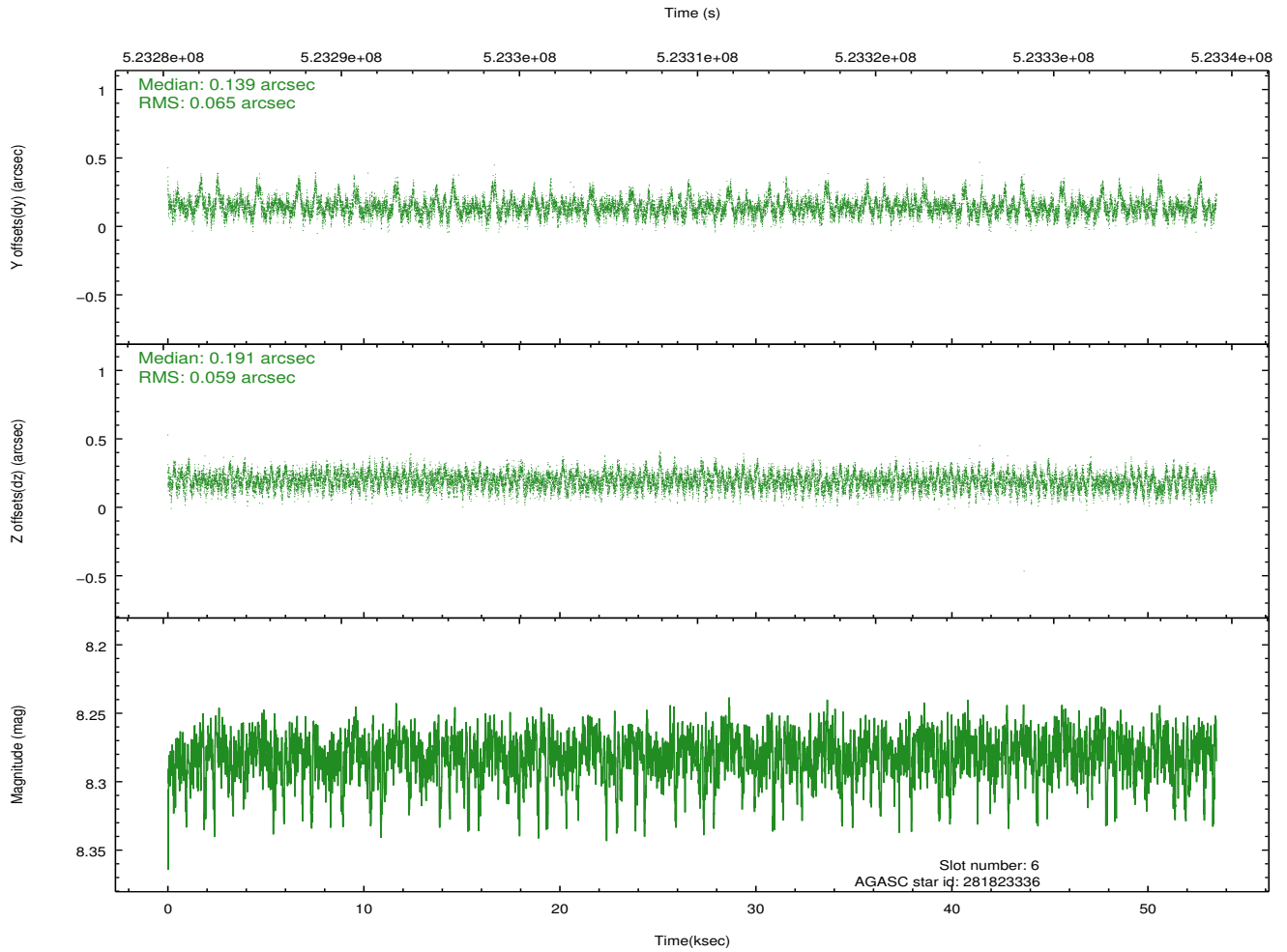
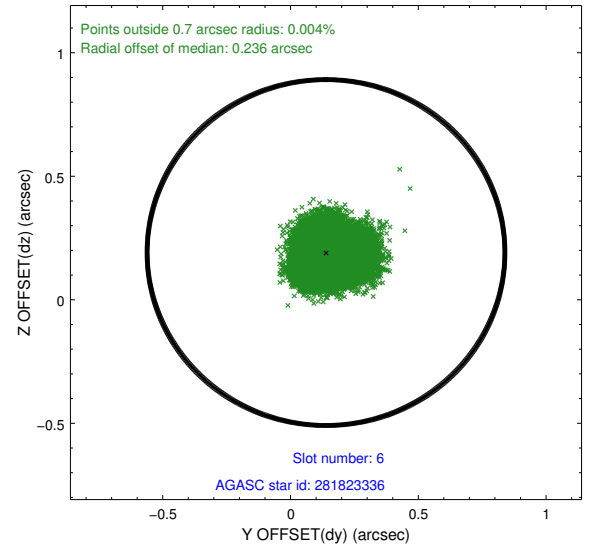
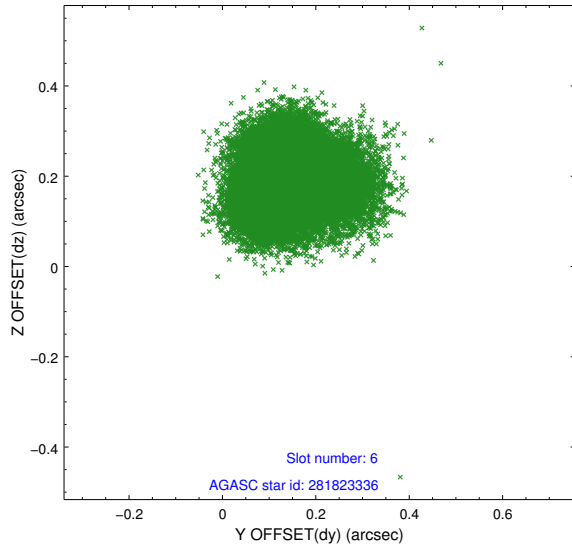




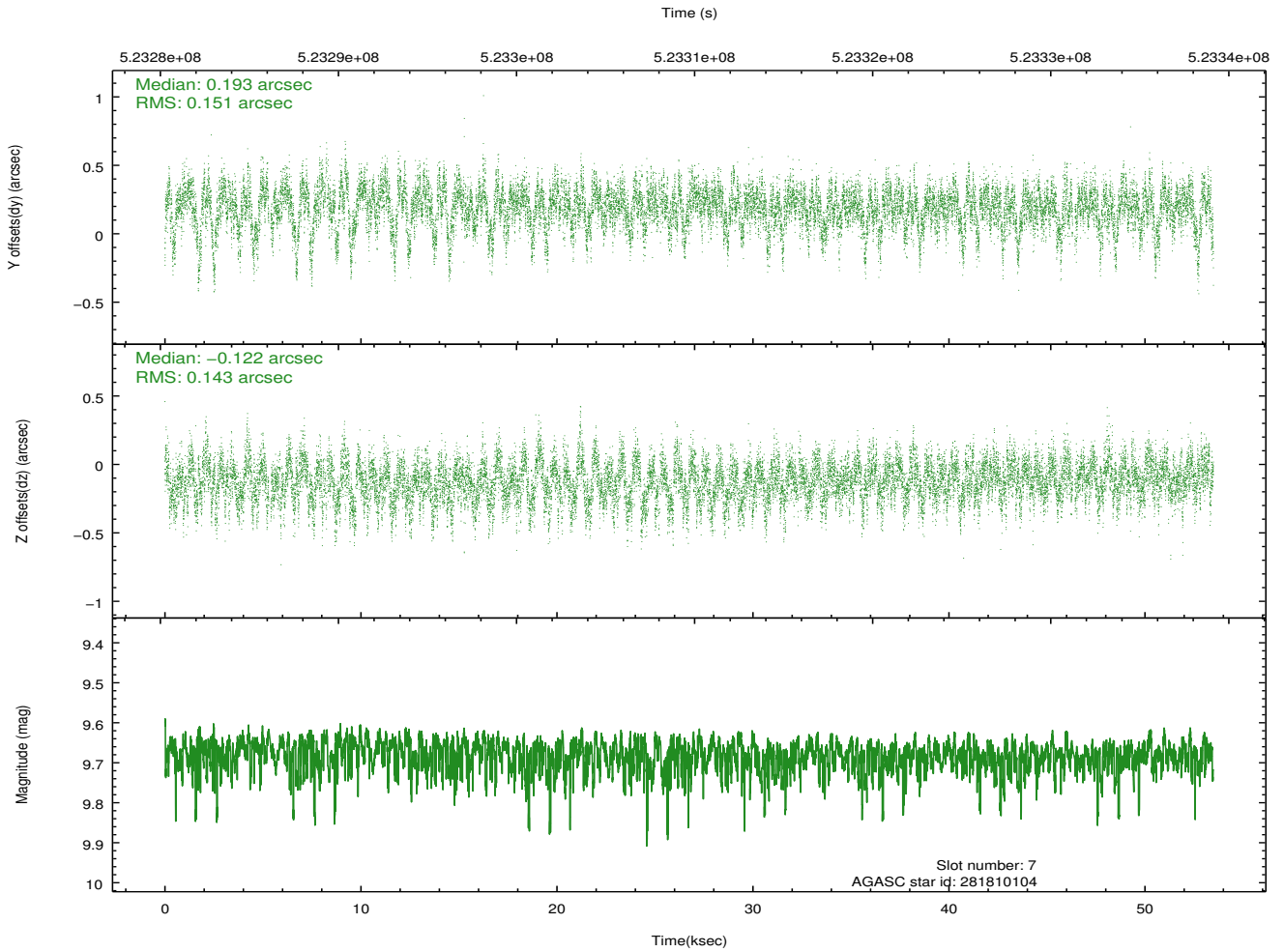
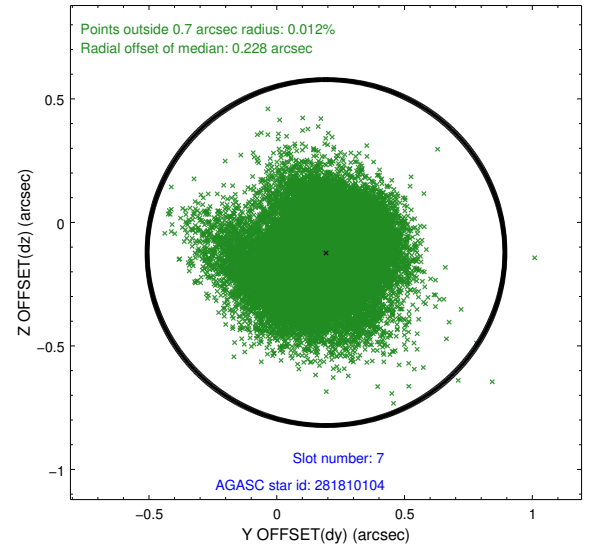
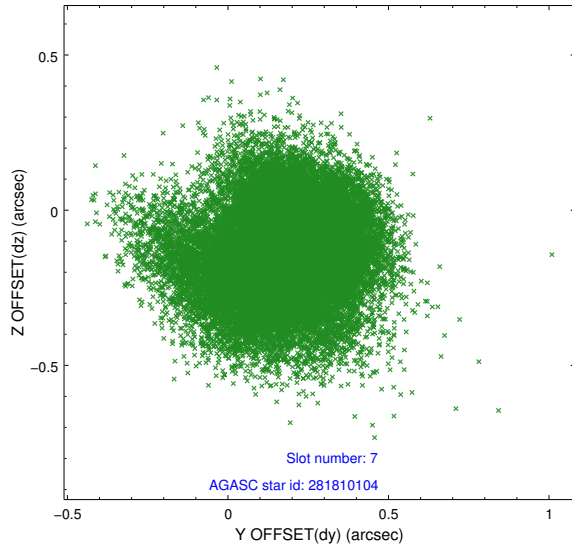
### 2.4.3 Slot 5



## 2.4.4 Slot 6

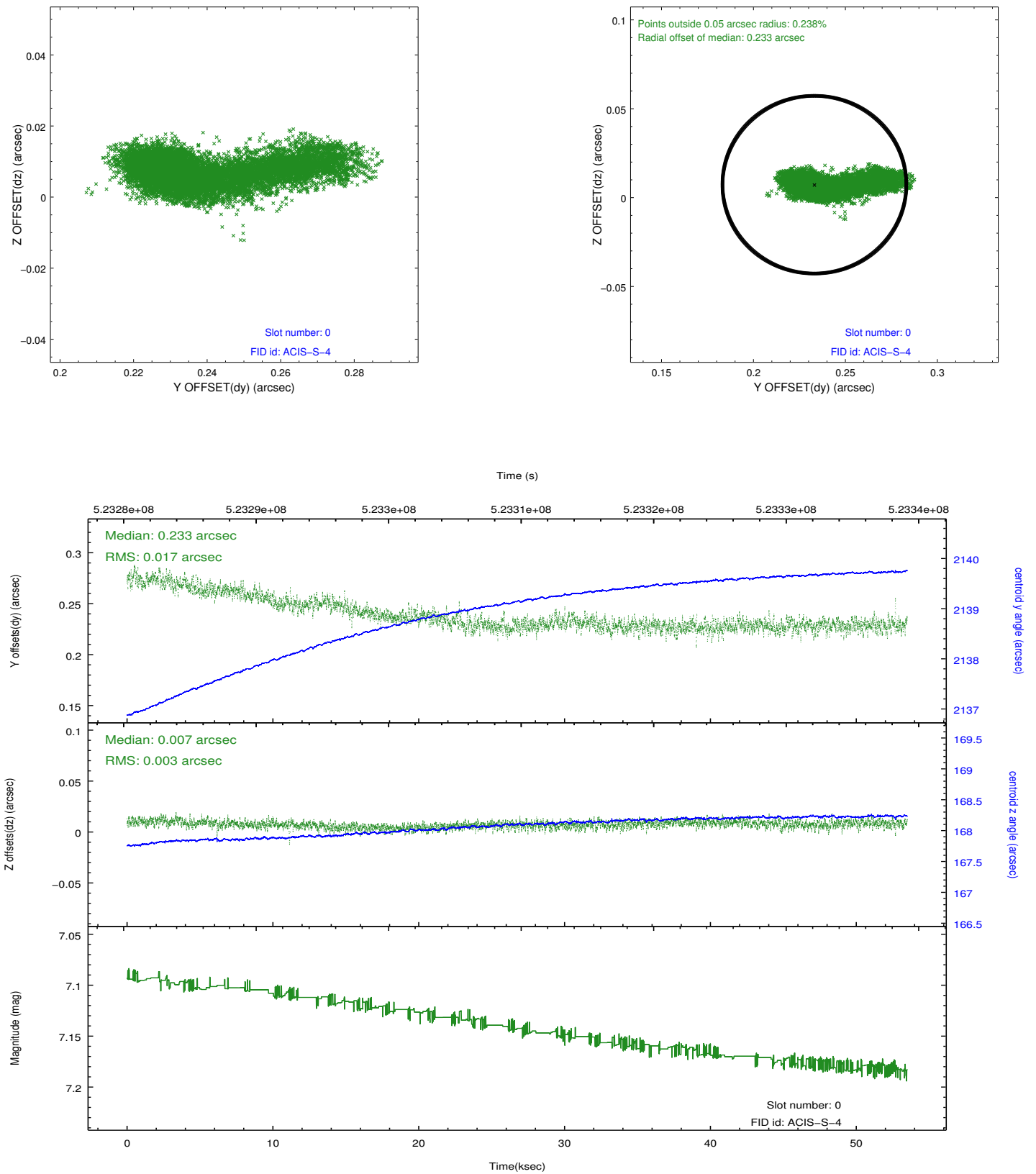


## 2.4.5 Slot 7

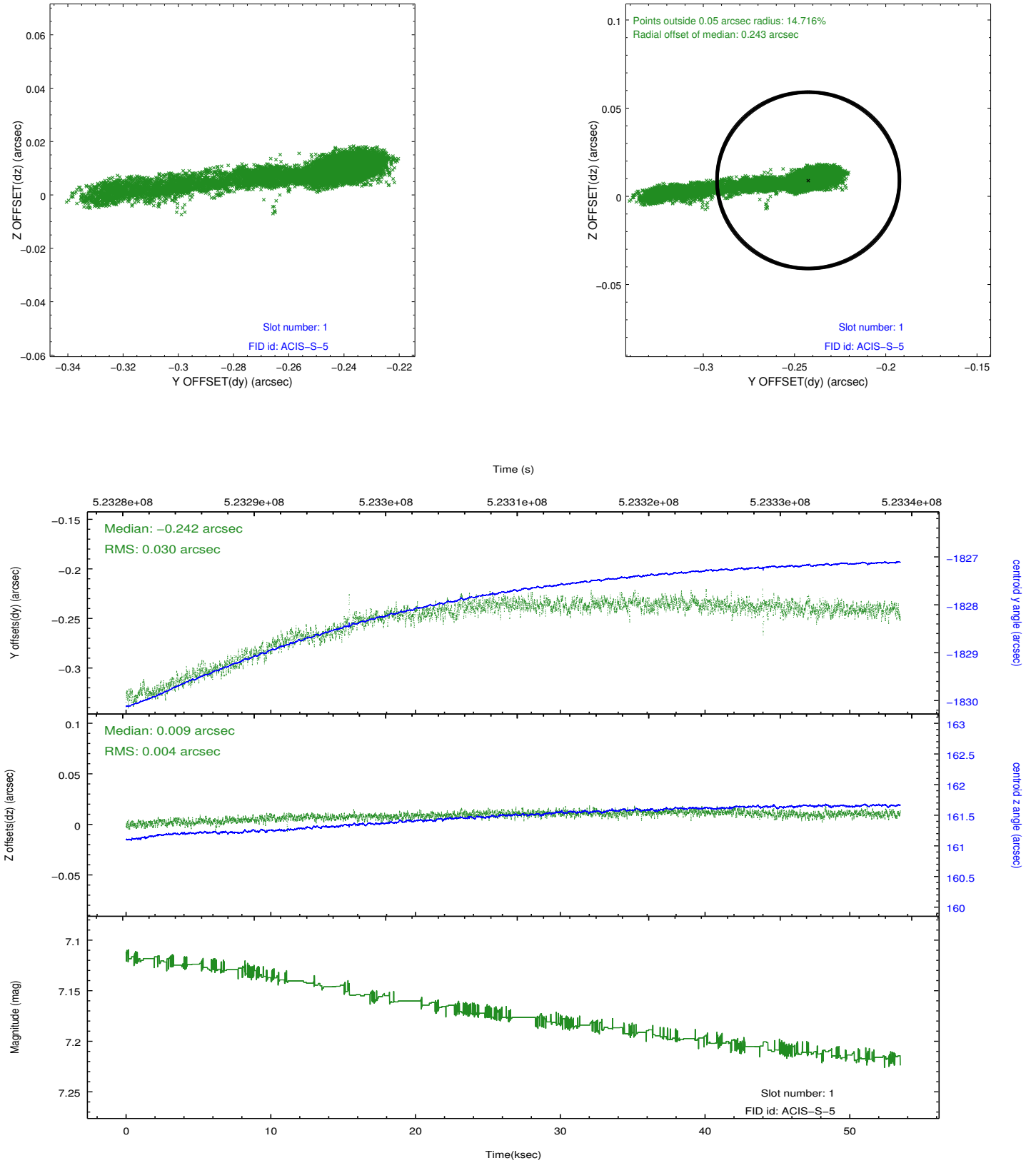


## 2.5 FID Slots

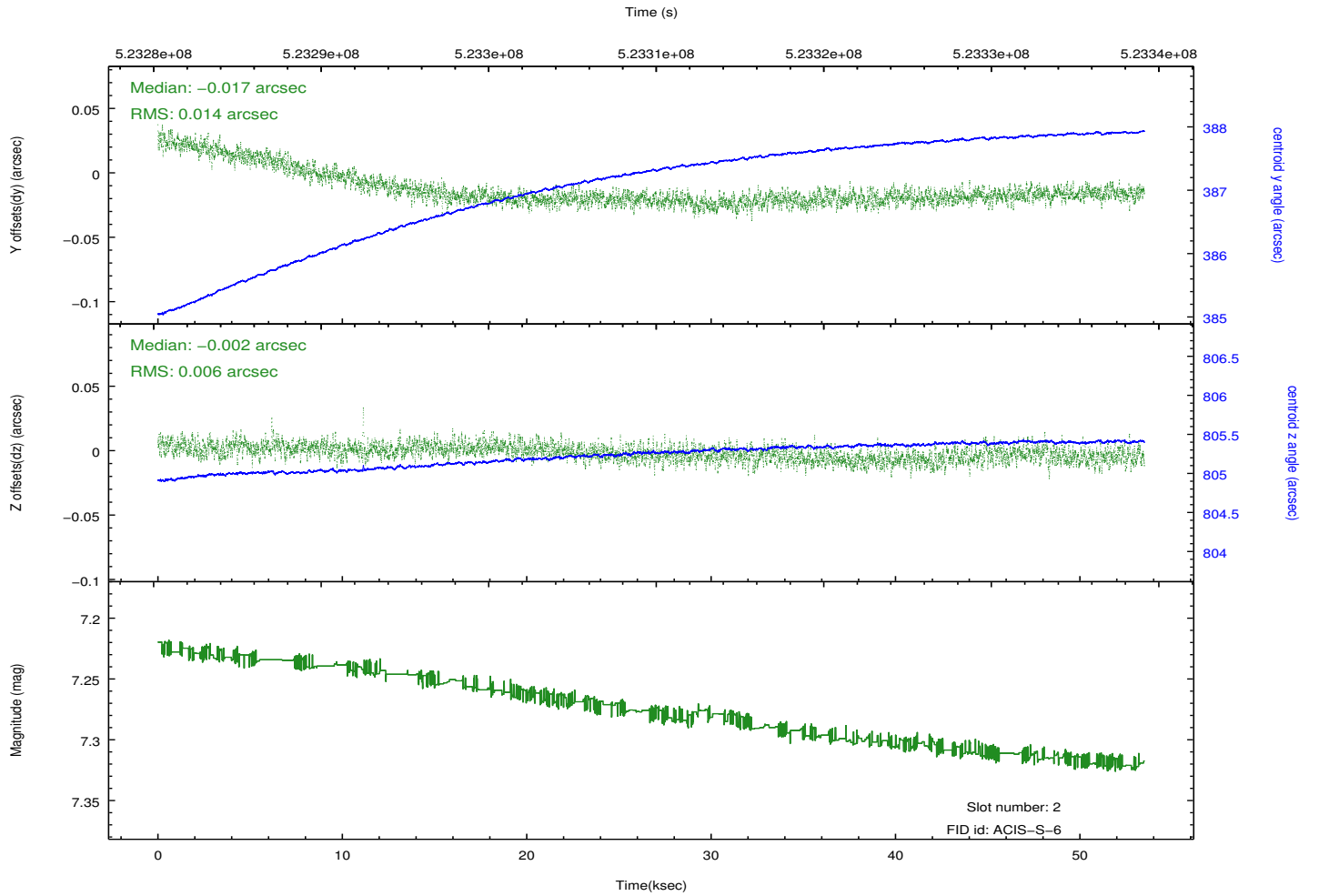
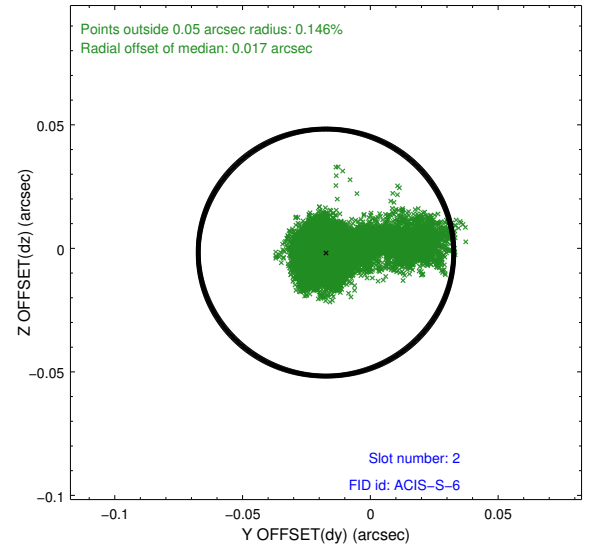
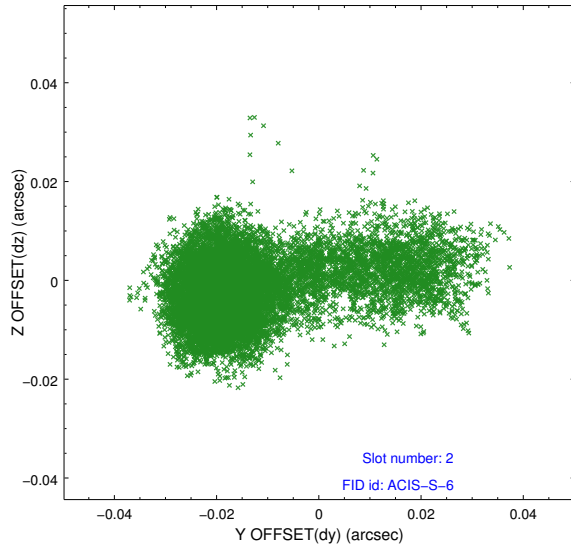
### 2.5.1 Slot 0



## 2.5.2 Slot 1



### 2.5.3 Slot 2



## A Summary

### A.1 Status

V&V Scientist	Joy Nichols
V&V Date (YYYY-MM-DD)	2014.08.04
V&V Edition	1
V&V Disposition and Status	OK
V&V Charge Time	53.402801157475

### A.2 Comments

Joint proposal with XMM.