

V&V Reference Report

L2 ASCDS Version : 10

Observation 15481 - L2 Version 1
Chandra X-Ray Center

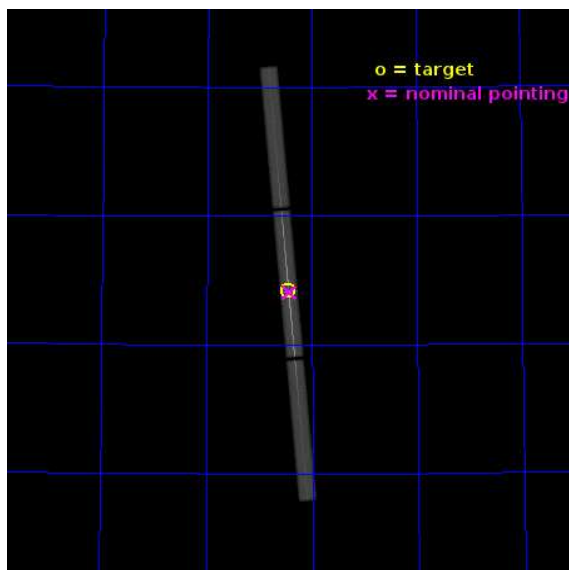
L2 Processing Date : Jul 1 2013

Contents

1	Front	2
2	OBI	3
2.1	OBI	3
2.1.1	Images	3
2.1.2	Parameters	4
2.1.3	Events	4
2.2	Compared Parameters	5
2.3	Aspect	6
2.4	Star Slots	9
2.4.1	Slot 3	9
2.4.2	Slot 4	10
2.4.3	Slot 5	11
2.4.4	Slot 6	12
2.4.5	Slot 7	13
2.5	FID Slots	14
2.5.1	Slot 0	14
2.5.2	Slot 1	15
2.5.3	Slot 2	16
3	Gratings	17
3.1	LETG Arm	17
A	Summary	19
A.1	Status	19
A.2	Comments	19

1 Front

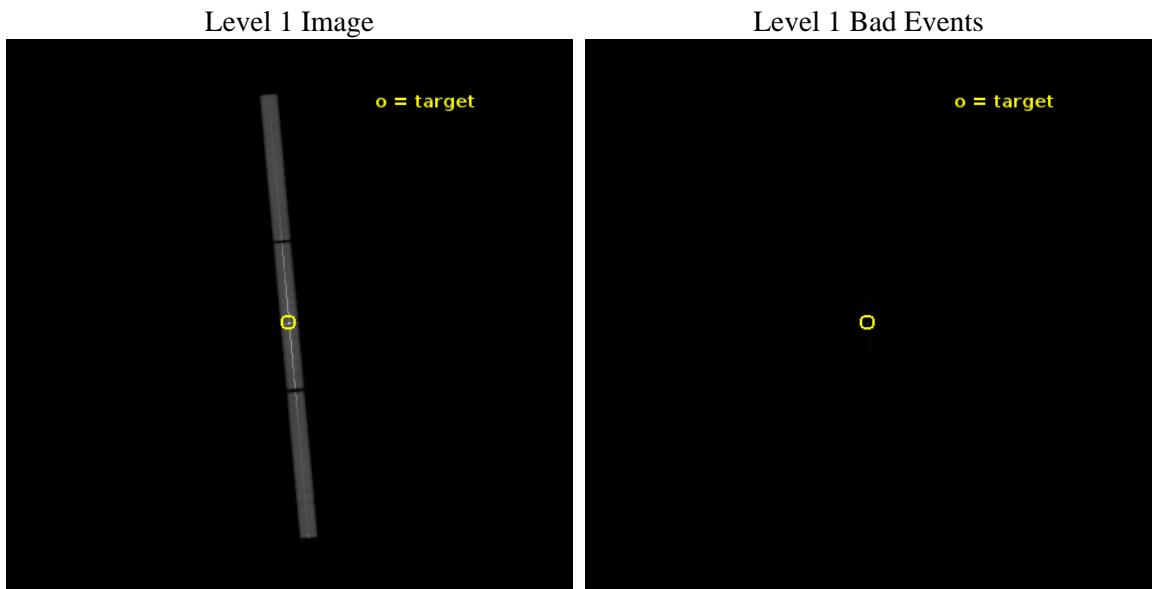
seq_num	790257	Sequence number
obs_id	15481	Observation id
title	AO-14 Calibration Observations of Mkn421	Proposal title
observer	Dr. CXC Calibration	Principal investigator
object	MKN421	Source name
ra_targ	166.113333	Observer's specified target RA [deg]
dec_targ	38.208806	Observer's specified target Dec [deg]
ra_nom	166.11283426969	Nominal RA [deg]
dec_nom	38.204027612413	Nominal Dec [deg]
roll_nom	264.94872118725	Nominal Roll [deg]
revision	1	Processing version of data
ontime	10185.681803703	[s]
livetime	10093.820438016	Ontime multiplied by DTCOR
l2events	898292	Number of level 2 events



2 OBI

2.1 OBI

2.1.1 Images



2.1.2 Parameters

obi_num	0	Obi number	sched_exp_time	10000.000000	[s] Scheduled observation exposure time
ascdsver	10	Processing system revision	ontime	10185.681803703	[s]
caldsver	4.5.7	 	l1events	1117642	Number of level 1 events
date	2013-07-01T16:21:10	Date and time of file creation			
revision	1	Processing version of data			

2.1.3 Events

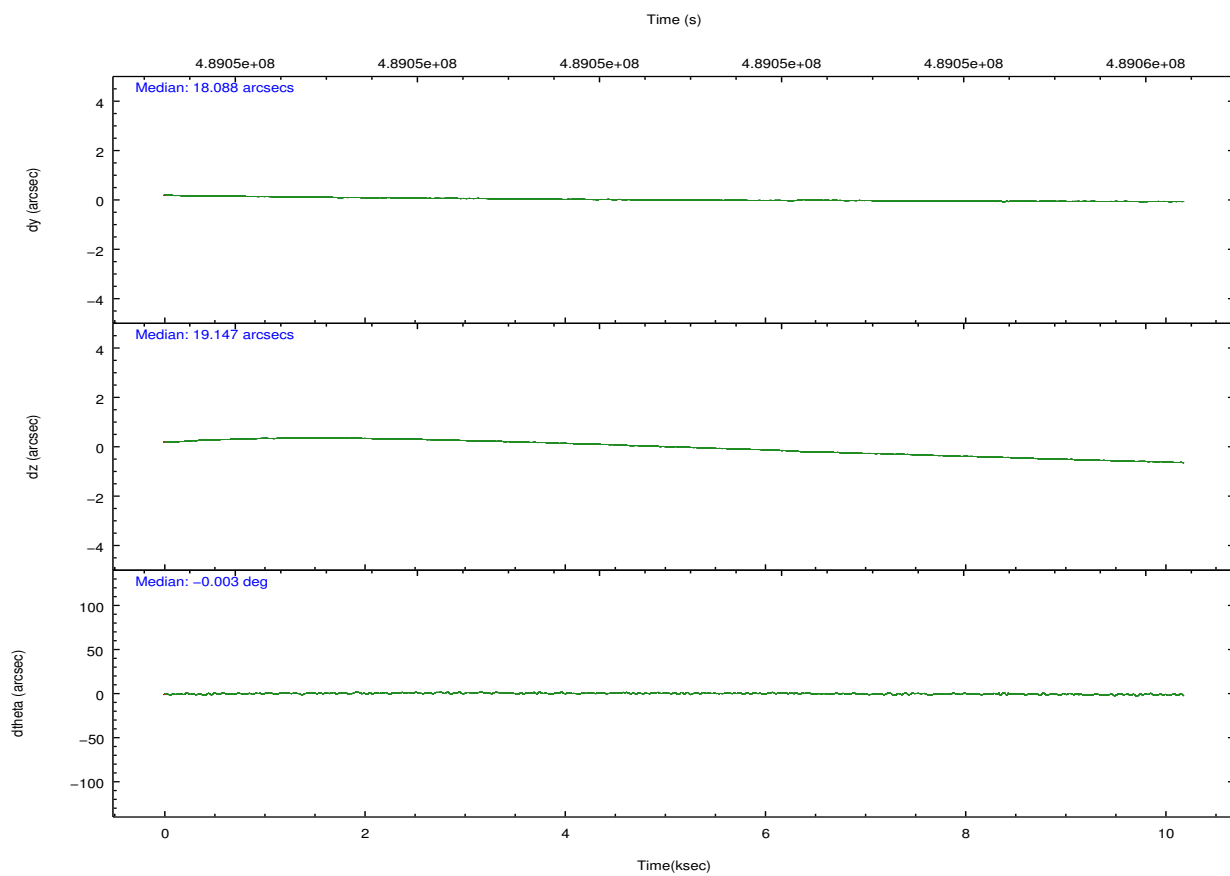
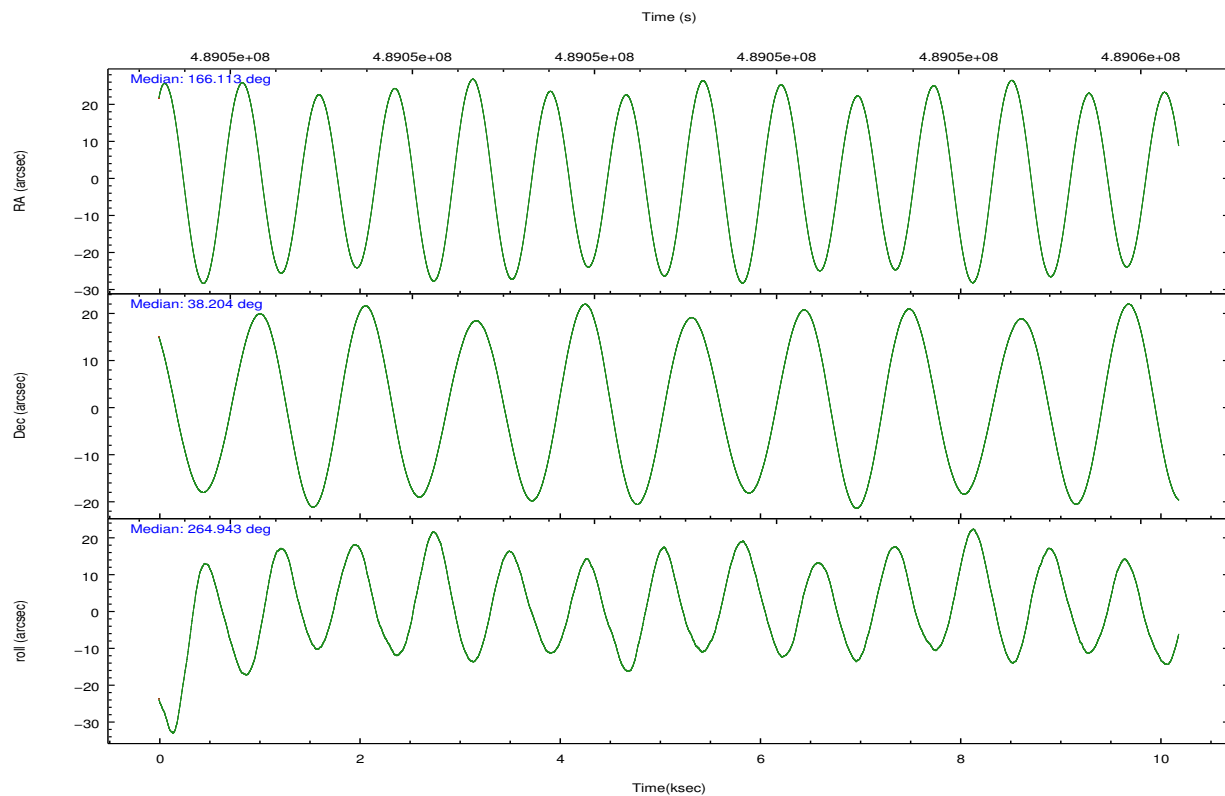
Level 1 Events

	segment 1	segment 2	segment 3
level 1 events	263951	581662	272029
rejected events	7302	12957	7494
rejected %	2%	2%	2%

2.2 Compared Parameters

Parameter	Planned	Actual	Parameter	Planned	Actual
Instrument	HRC	HRC	Obspar format version number	7	7
Detector	HRC-S	HRC-S	Obspar file type	PREDICTED	ACTUAL
Grating	LETG	LETG	Obspar update status	NONE	UPDATED
Data mode	OBSERVING	OBSERVING			
Observation mode	POINTING	POINTING			
[deg] Pointing RA	166.095665	166.1128342696859			
[deg] Pointing Dec	38.229467	38.20402761241279			
[deg] Pointing Roll	264.892015	264.9487211872532			
[mm] SIM focus pos	-1.429586	-1.428180813131781			
[mm] SIM defocus	0.1037507710433287	0.1051558262725154			
[mm] SIM translation stage pos	250.455976	250.466033080201			
[mm] SIM translation stage offset	0	-0.01005468664627074			
[s] Observation start time (MET)	489045905.184000	489045440.12628			
Observation start date	2013-07-01T06:03:58	2013-07-01T05:57:20			
[s] Observation end time (MET)	489055905.184000	489056167.77687			
Observation end date	2013-07-01T08:50:38	2013-07-01T08:56:07			

2.3 Aspect

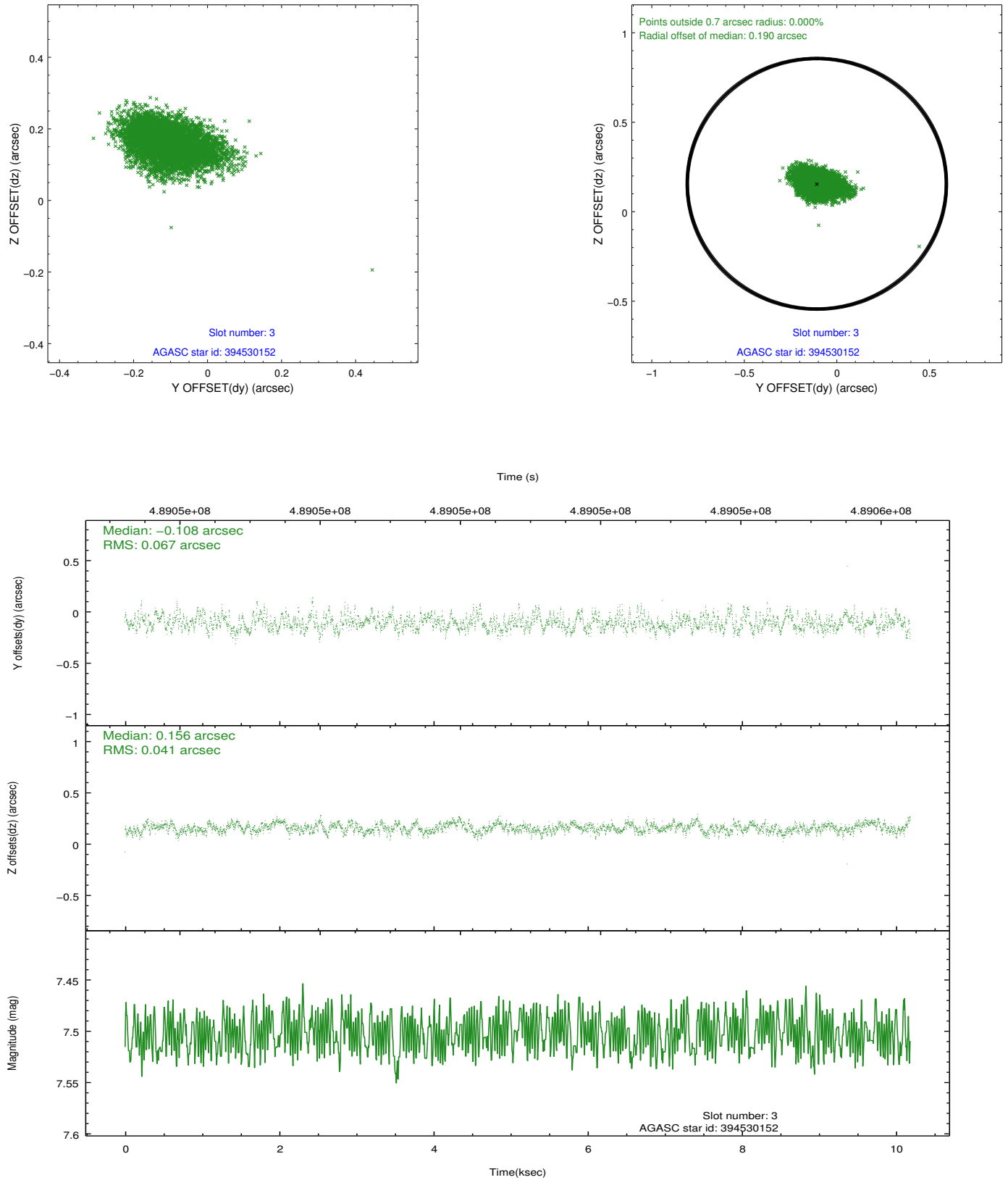


Slot Statistics

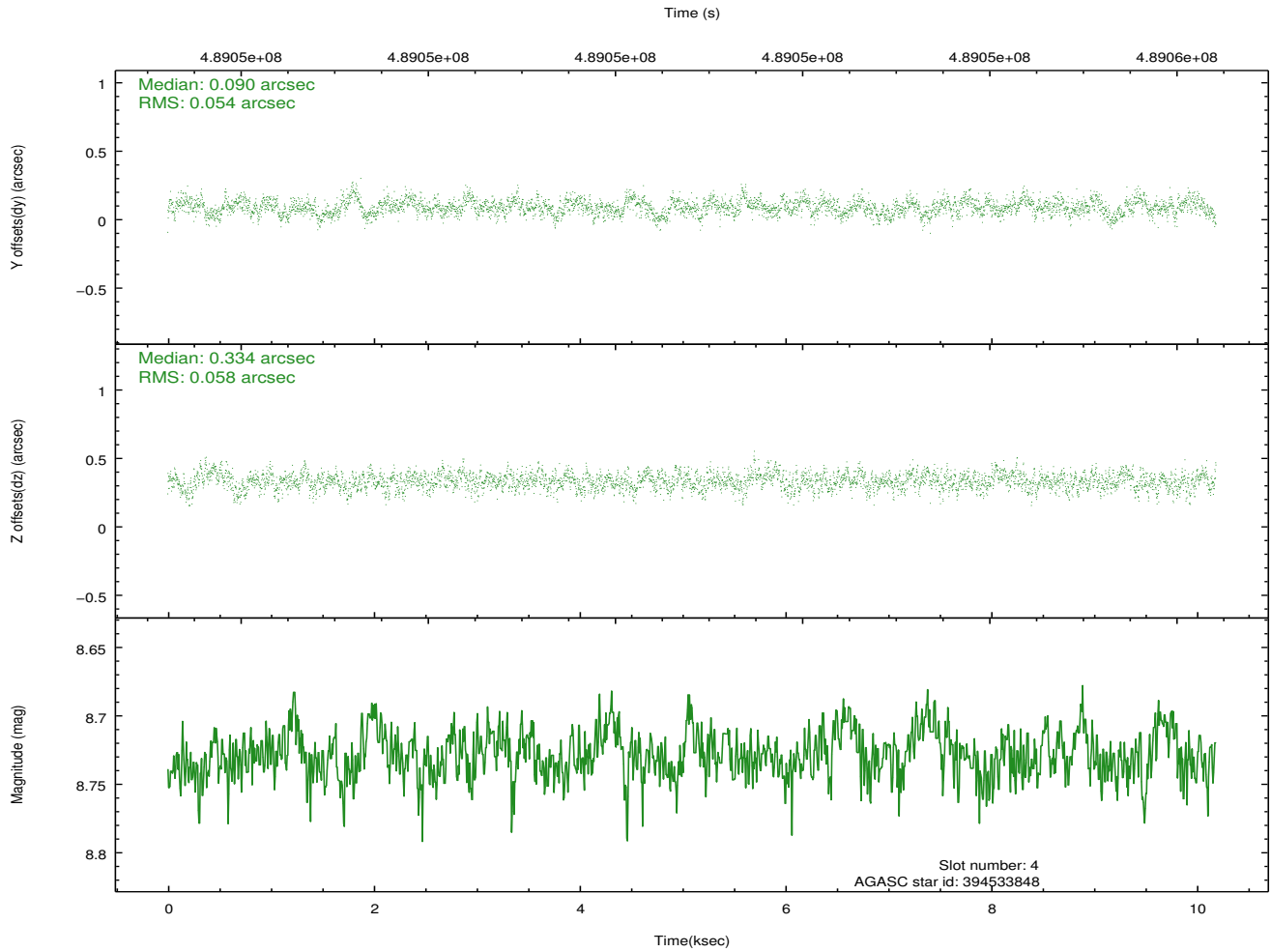
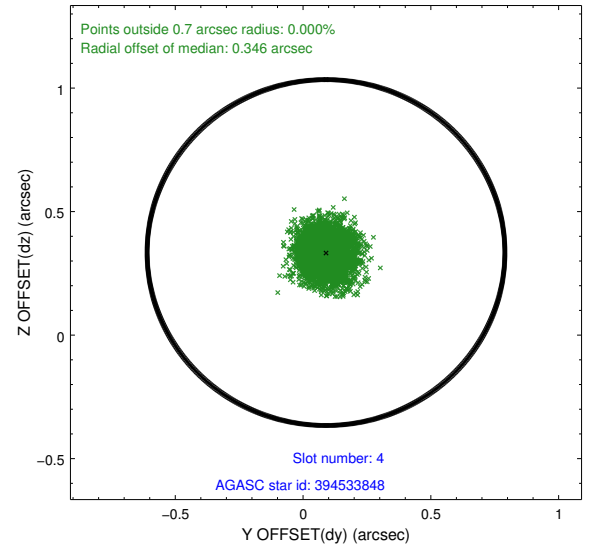
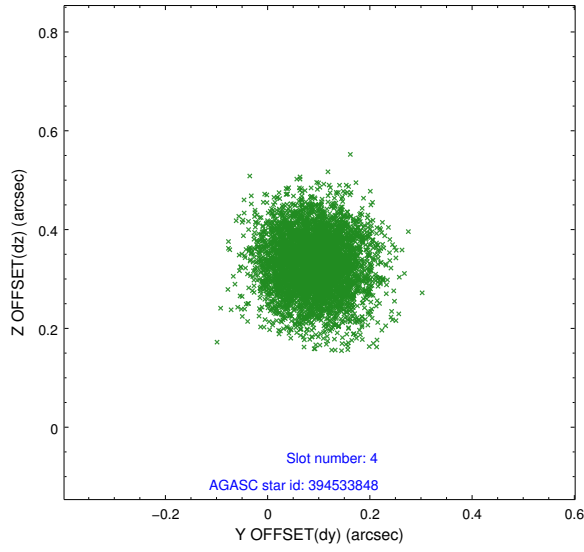
slot	status	id	mag	n_pts	med_dy	med_dz	dr1	dr2	ra	dec	mean_y	mean_z
0	FID	HRC-S-1	7.04	2485	0.065	-0.214	0.013	0.027	0.000000	0.000000	-1172.60	-468.13
1	FID	HRC-S-2	7.00	2485	0.234	-0.117	0.005	0.010	0.000000	0.000000	1226.78	-460.87
2	FID	HRC-S-3	7.03	2485	0.091	0.030	0.013	0.029	0.000000	0.000000	-1174.80	561.46
3	GUIDE	394530152	7.50	4970	-0.108	0.156	0.083	0.138	166.075805	38.868252	-2285.47	-260.39
4	GUIDE	394533848	8.73	4966	0.090	0.334	0.085	0.138	166.382906	38.276007	-241.12	789.05
5	GUIDE	394543960	9.78	4952	0.173	0.224	0.196	0.320	165.802757	37.787371	1658.45	-688.06
6	GUIDE	394546712	6.61	4970	-0.203	0.272	0.076	0.128	166.451462	38.394357	-682.03	945.81
7	GUIDE	394546720	6.43	4968	0.041	-0.984	0.111	0.187	166.130115	38.241361	-51.28	92.27

2.4 Star Slots

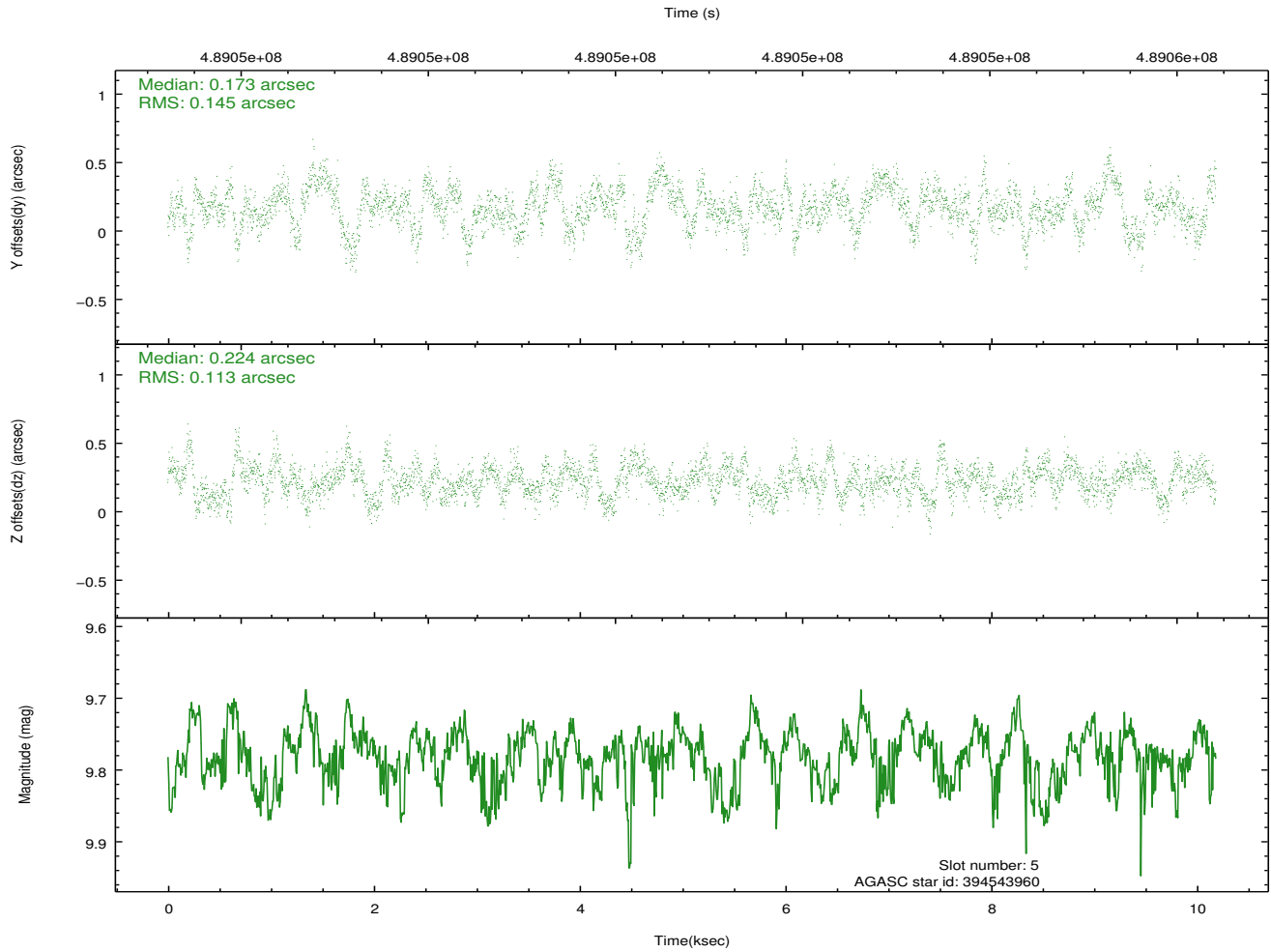
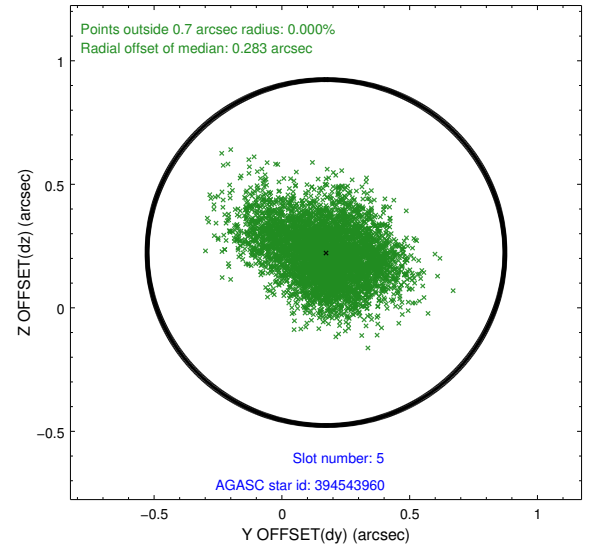
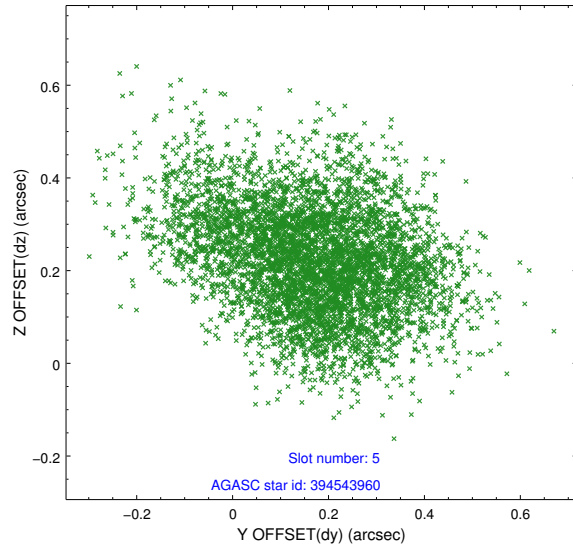
2.4.1 Slot 3



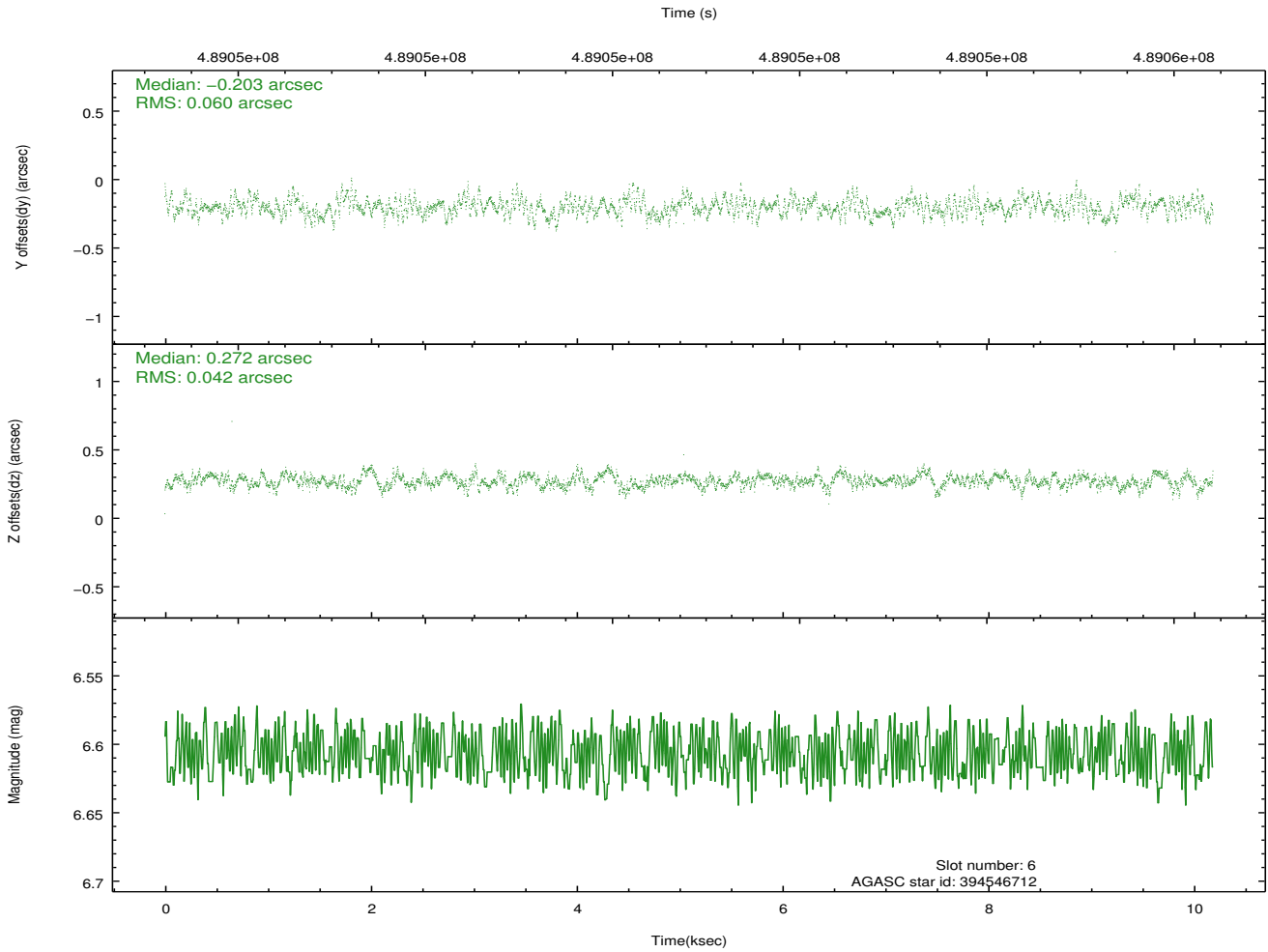
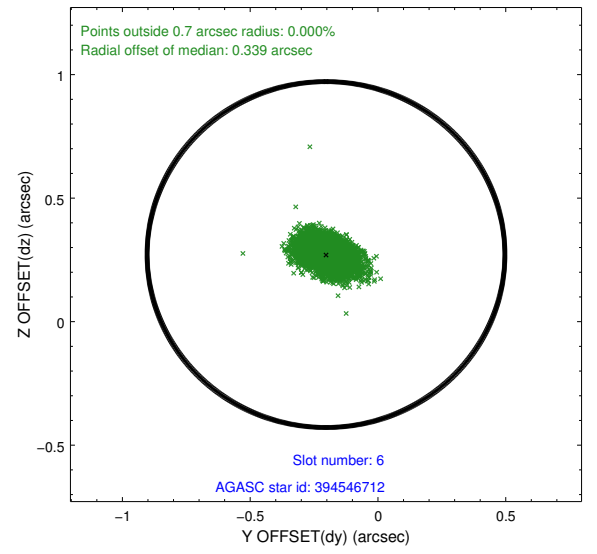
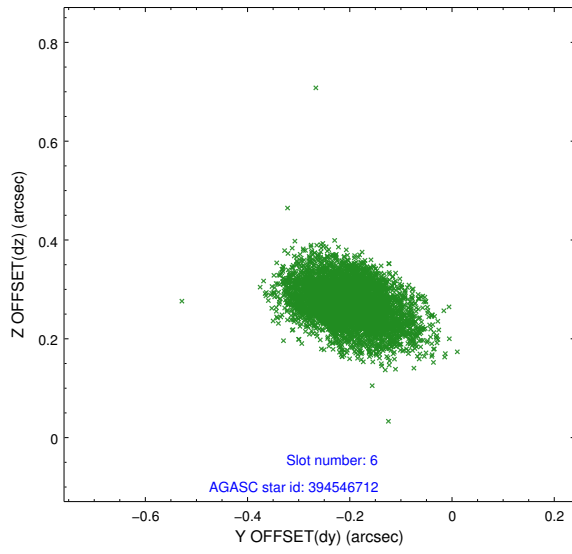
2.4.2 Slot 4



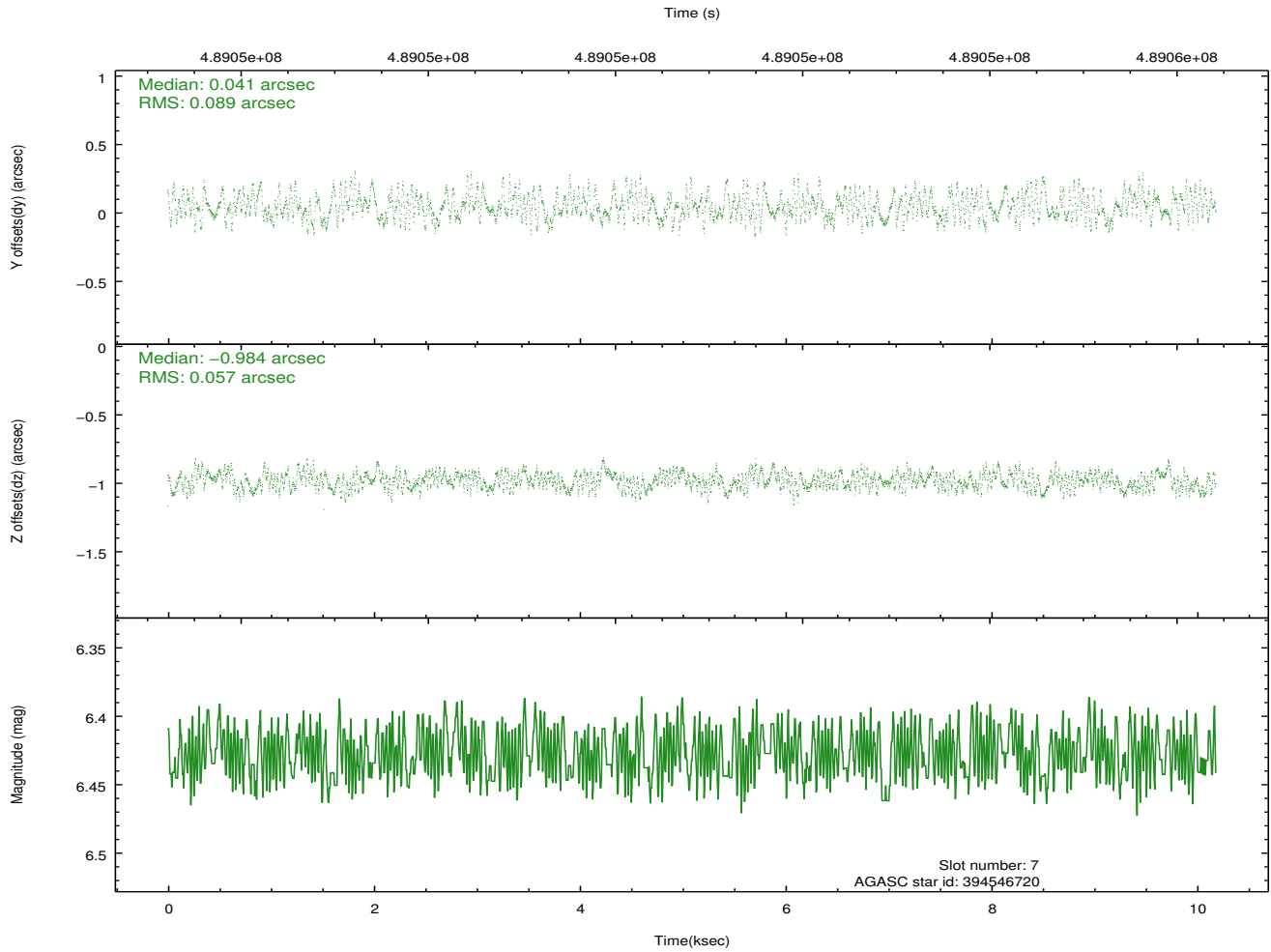
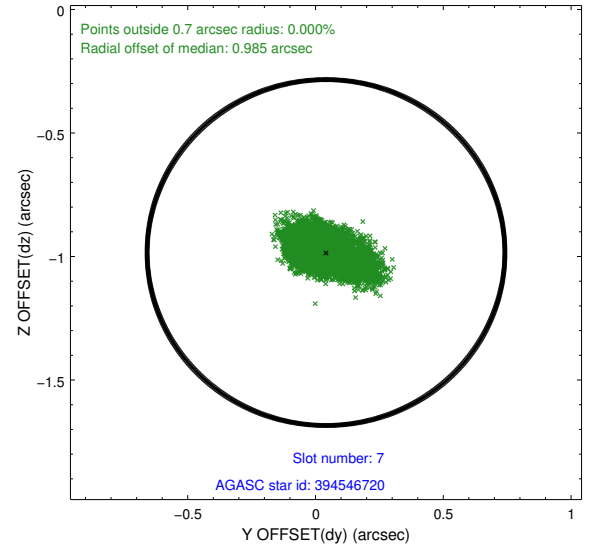
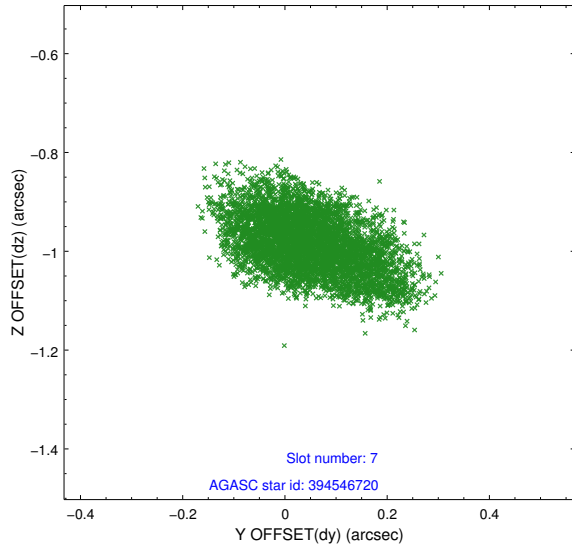
2.4.3 Slot 5



2.4.4 Slot 6

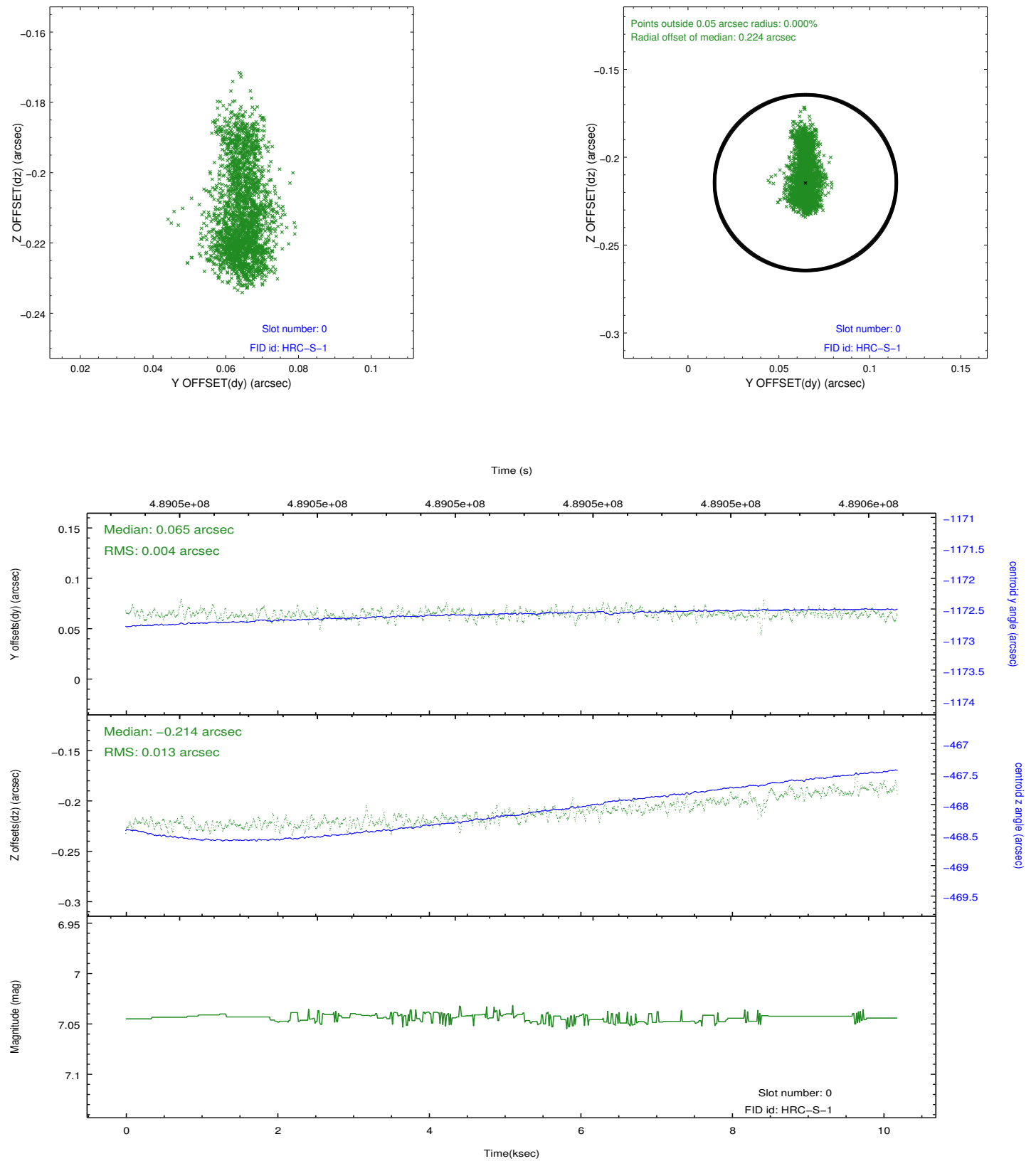


2.4.5 Slot 7

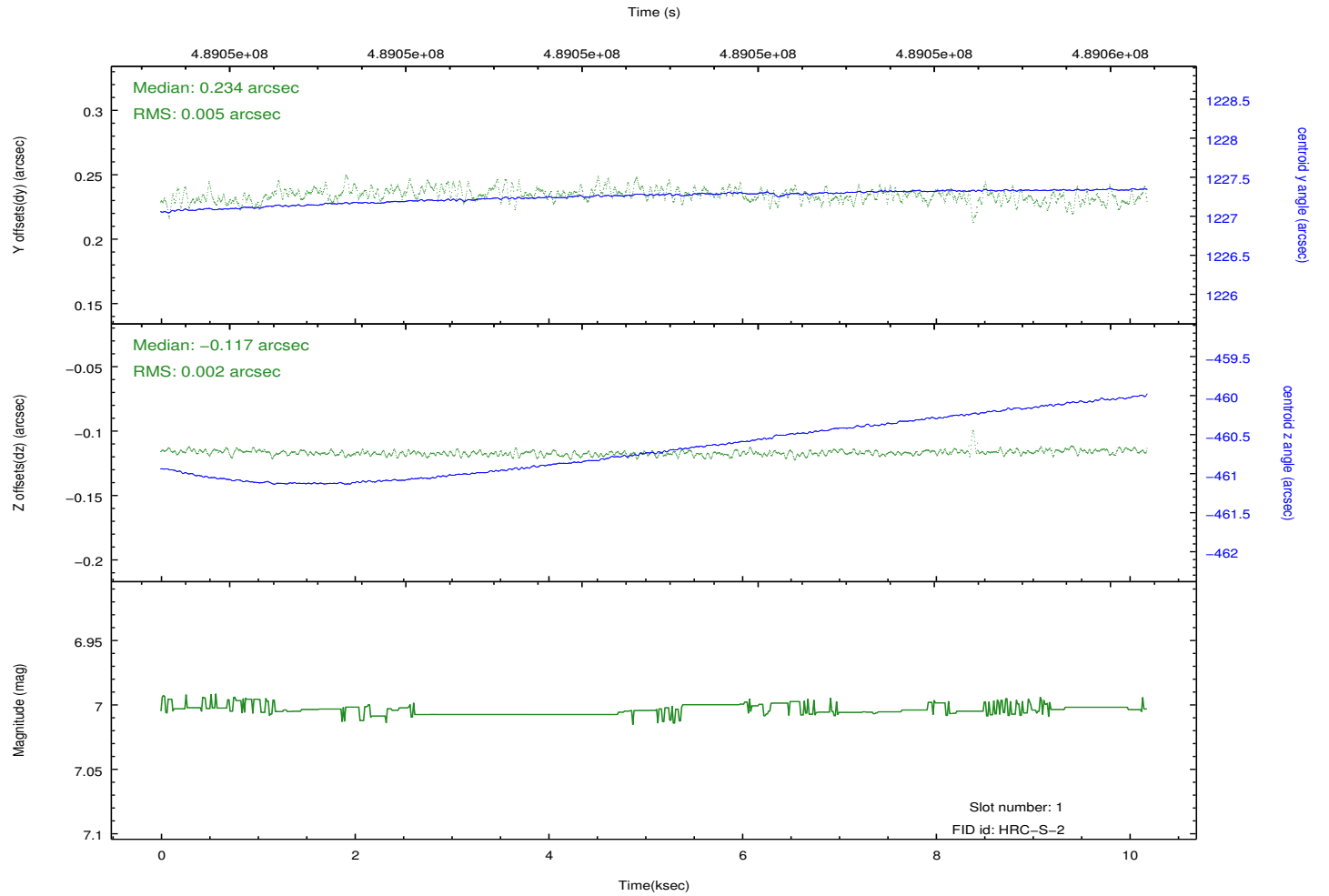
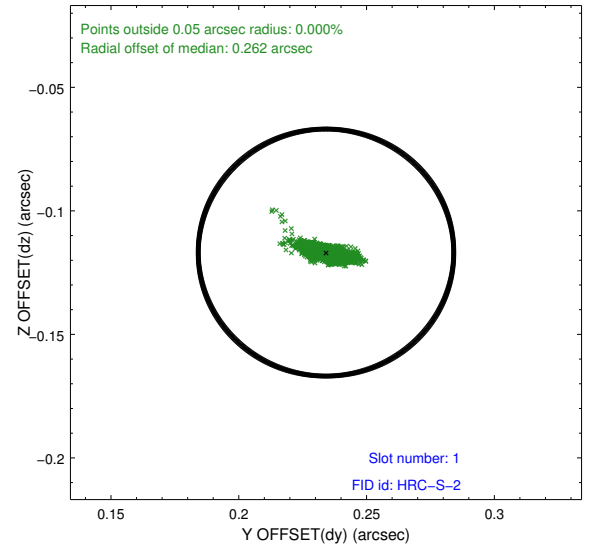
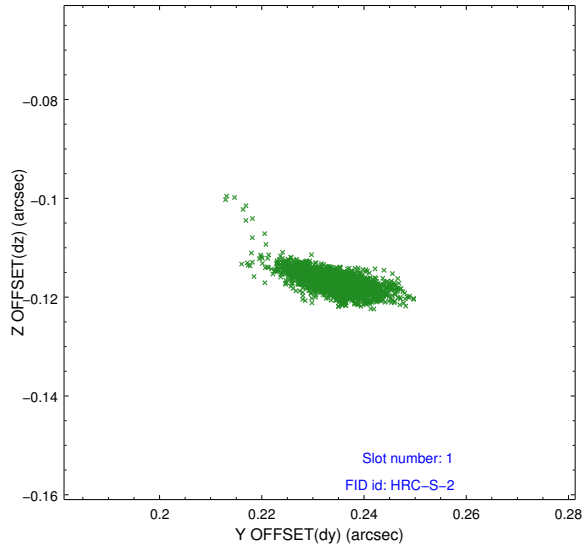


2.5 FID Slots

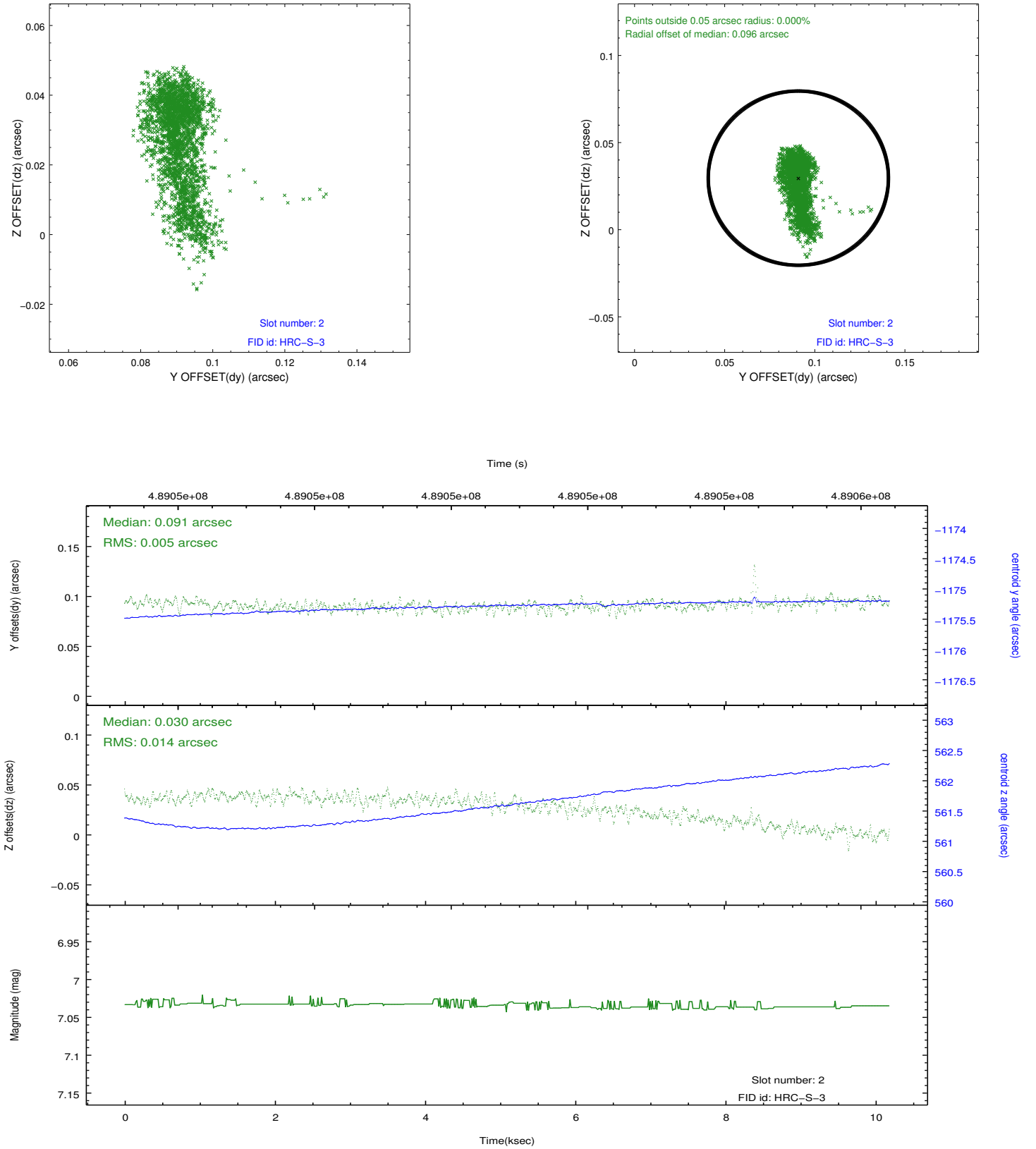
2.5.1 Slot 0



2.5.2 Slot 1

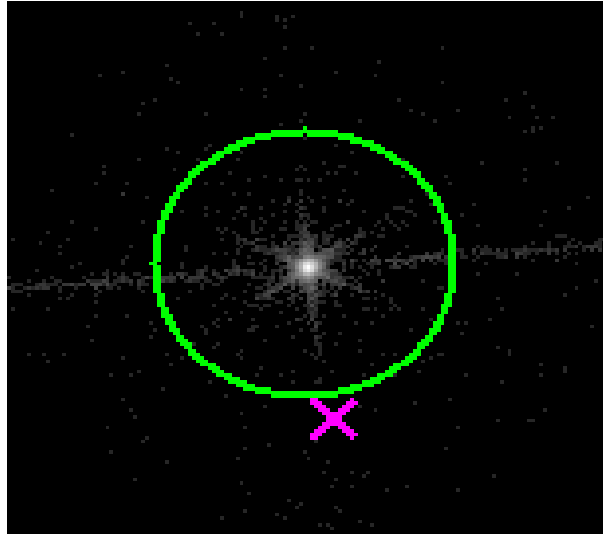


2.5.3 Slot 2

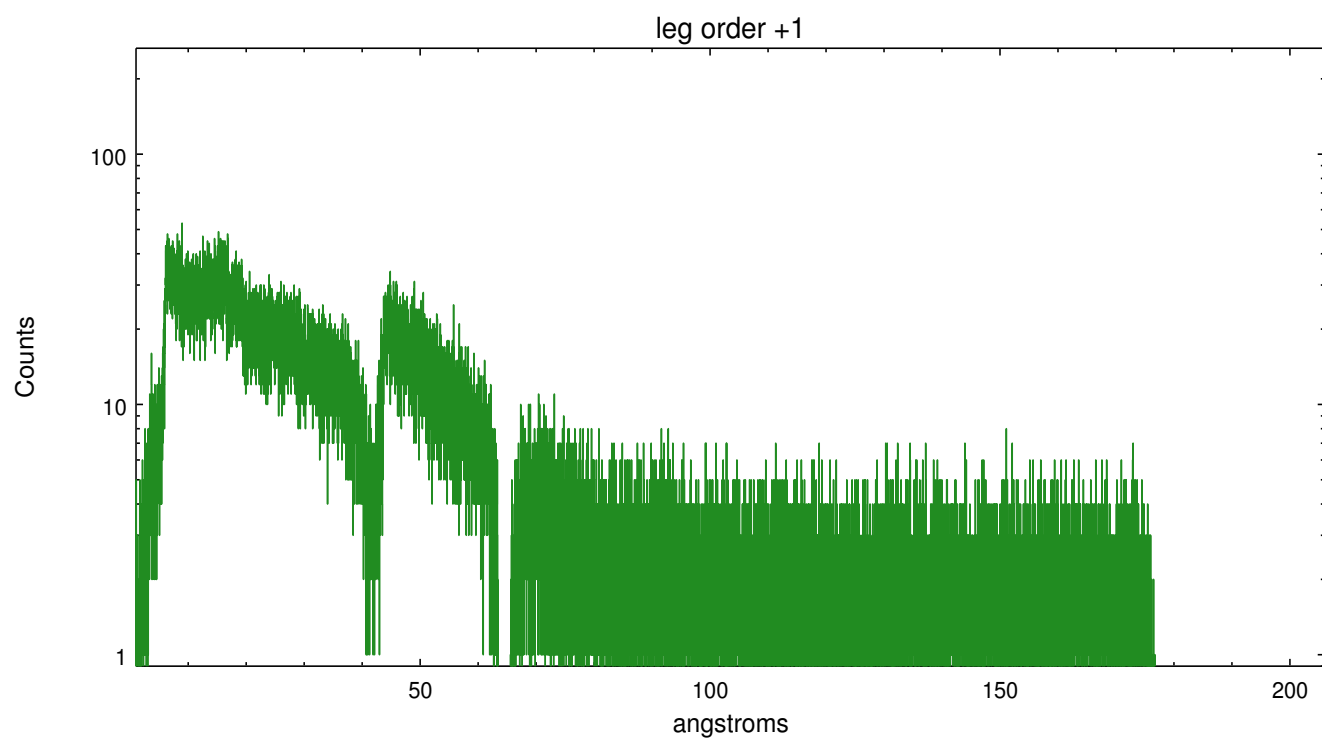
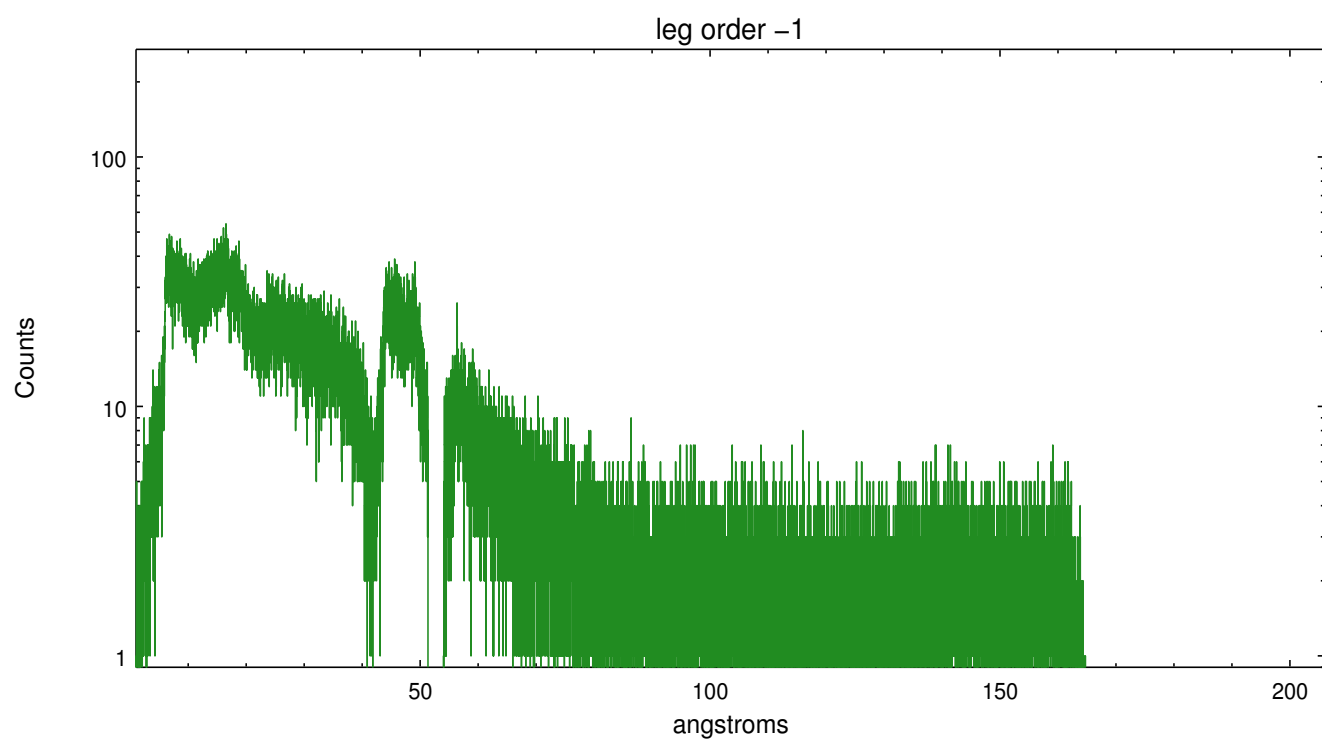


3 Gratings

3.1 LETG Arm



LETG Zero Order



A Summary

A.1 Status

V&V Scientist	David Huenemoerder
V&V Date (YYYY-MM-DD)	2013.07.01
V&V Edition	1
V&V Disposition and Status	OK
V&V Charge Time	10.185681803703

A.2 Comments