

V&V Reference Report

L2 ASCDS Version : 8.4.5

Observation 14451 - L2 Version 1
Chandra X-Ray Center

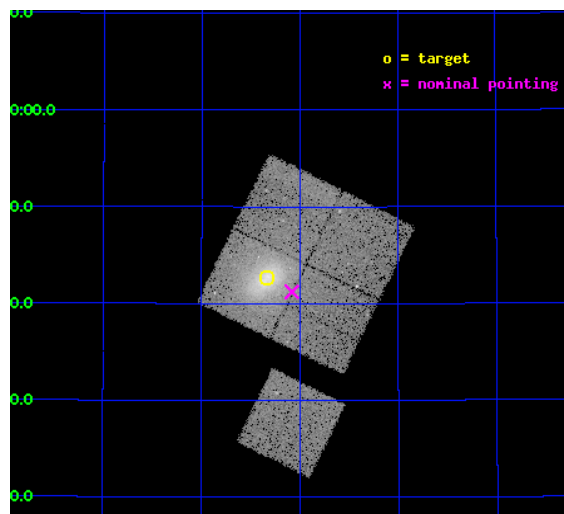
L2 Processing Date : Jun 27 2012

Contents

1	Front	2
2	OBI	3
2.1	OBI	3
2.1.1	Images	3
2.1.2	Bias	3
2.1.3	Parameters	4
2.1.4	Events	4
2.2	Compared Parameters	5
2.3	Aspect	6
2.4	Star Slots	9
2.4.1	Slot 3	9
2.4.2	Slot 4	10
2.4.3	Slot 5	11
2.4.4	Slot 6	12
2.4.5	Slot 7	13
2.5	FID Slots	14
2.5.1	Slot 0	14
2.5.2	Slot 1	15
2.5.3	Slot 2	16
A	Summary	17
A.1	Status	17
A.2	Comments	17

1 Front

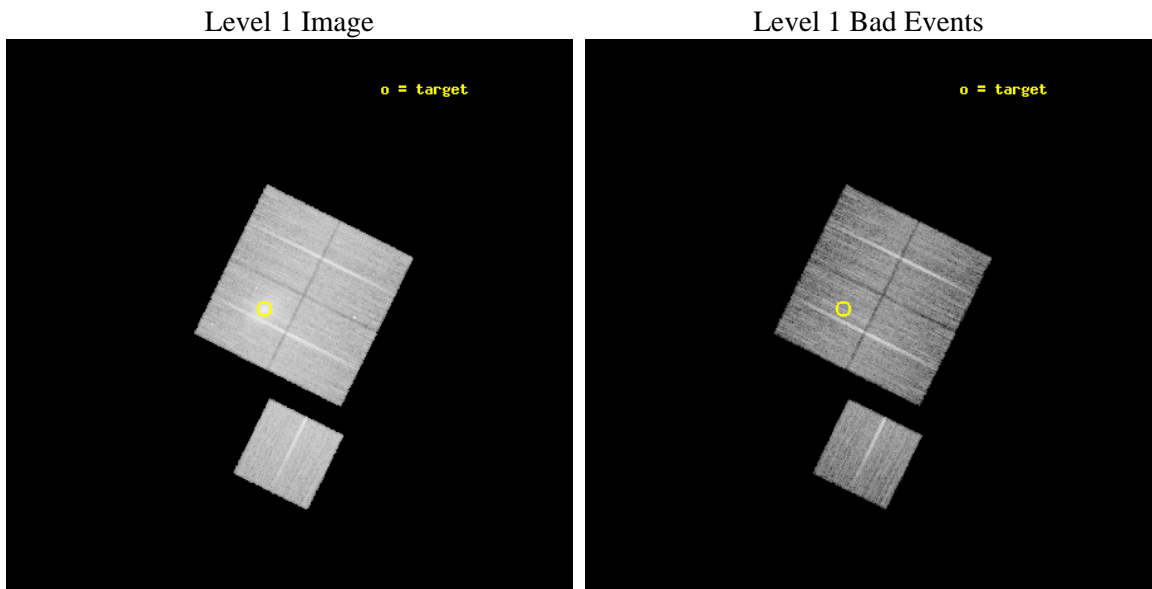
seq_num	801168	Sequence number
obs_id	14451	Observation id
title	A Chandra Study of the Large-Scale Shock Front in Abell 2219	Propo
observer	Prof. Steven Allen	Principal investigator
object	Abell 2219	Source name
dtcycle	0	
cycle	P	events from which exps? Prim/Second/Both
ra_targ	250.083333	Observer's specified target RA [deg]
dec_targ	46.710833	Observer's specified target Dec [deg]
ra_nom	250.0201960377	Nominal RA [deg]
dec_nom	46.687011147532	Nominal Dec [deg]
roll_nom	206.25461851202	Nominal Roll [deg]
revision	1	Processing version of data
ontime	20081.800154448	Sum of GTIs [s]
livetime	19819.416651424	Livetime [s]
ontime0	20078.631624281	Sum of GTIs [s]
ontime1	20081.800154448	Sum of GTIs [s]
ontime2	20078.65916419	Sum of GTIs [s]
ontime3	20081.800154448	Sum of GTIs [s]
ontime6	20078.59056443	Sum of GTIs [s]
l2events	91564	Number of level 2 events



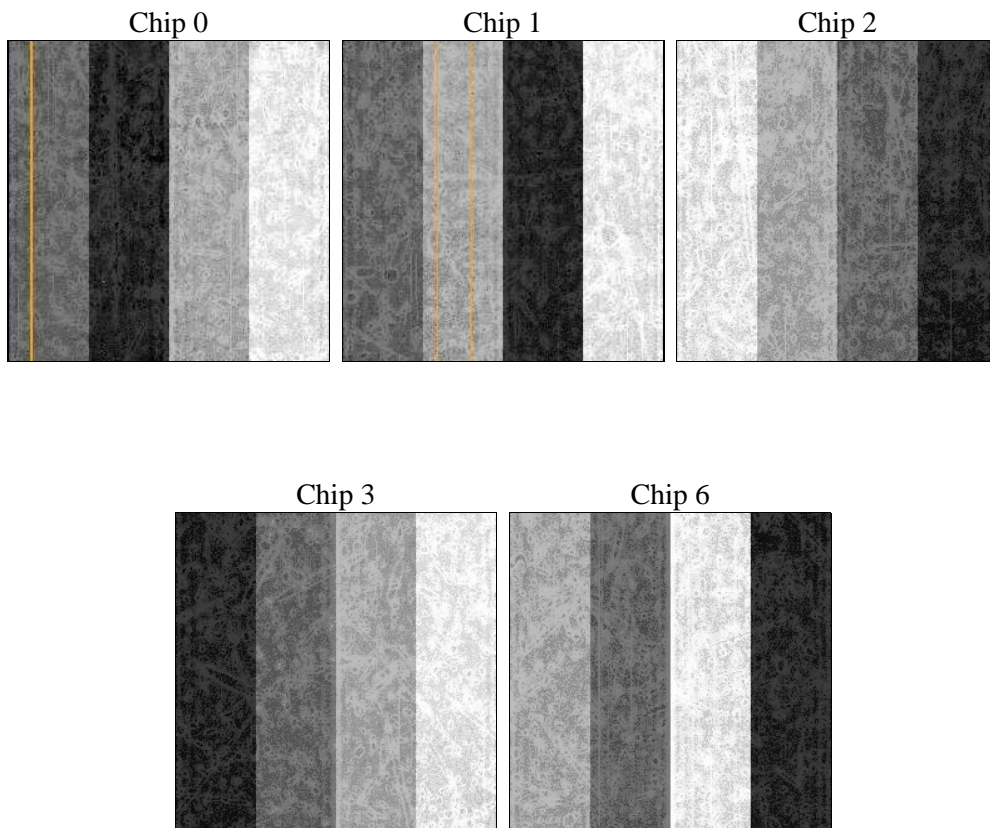
2 OBI

2.1 OBI

2.1.1 Images



2.1.2 Bias



2.1.3 Parameters

obi_num	0	Obi number	sched_exp_time	20000.000000	[s] Scheduled observation exposure time
ascdsver	8.4.5	Processing system revision	ontime	20081.800154448	Sum of GTIs [s]
caldsver	4.5.0	 	ontime0	20078.631624281	Sum of GTIs [s]
date	2012-06-27T17:23:12	Date and time of file creation	ontime1	20081.800154448	Sum of GTIs [s]
revision	1	Processing version of data	ontime2	20078.65916419	Sum of GTIs [s]
			ontime3	20081.800154448	Sum of GTIs [s]
			ontime6	20078.59056443	Sum of GTIs [s]
			l1events	604651	Number of level 1 events

2.1.4 Events

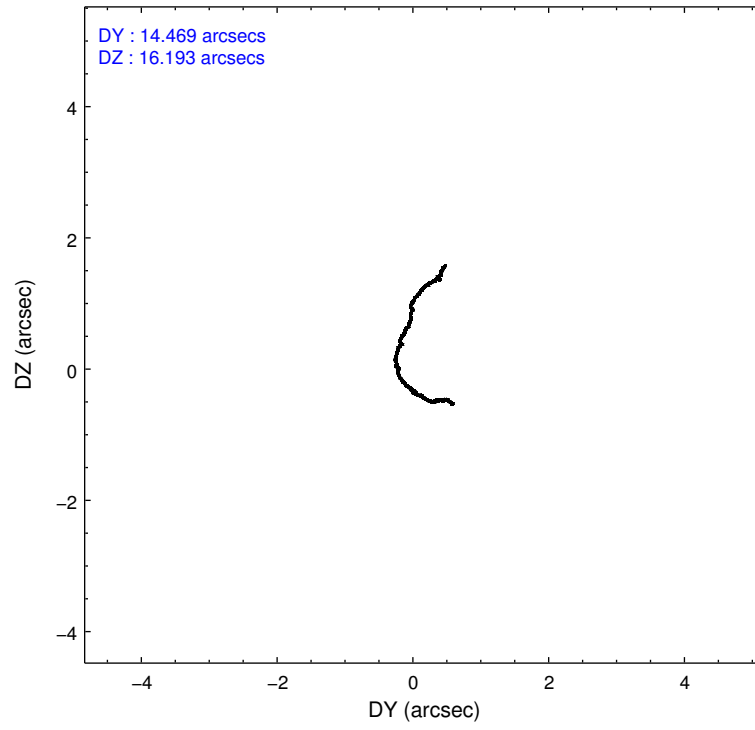
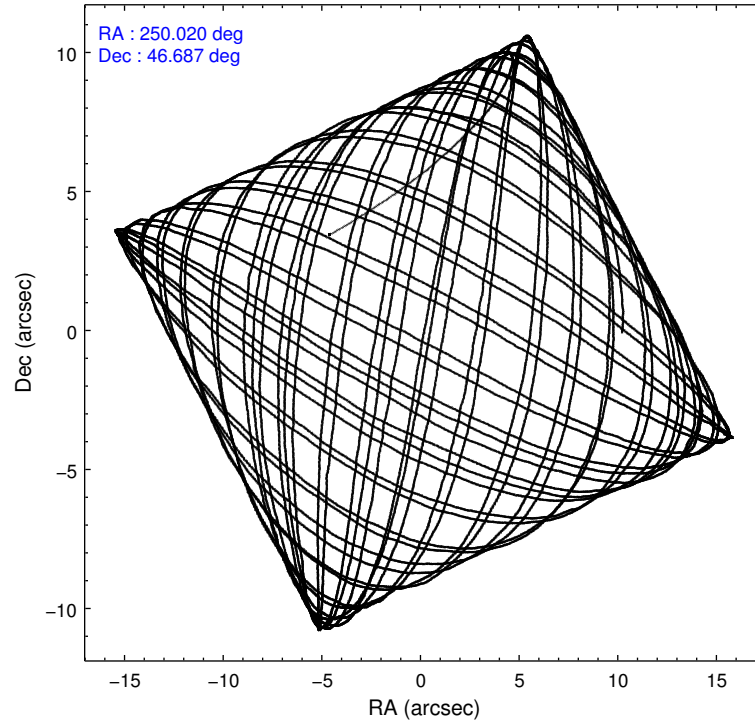
	ccd 0	ccd 1	ccd 2	ccd 3	ccd 6
level 1 events	106696	112896	119791	147011	118257
rejected events	92284	96424	105075	102906	104361
rejected %	86%	85%	87%	69%	88%

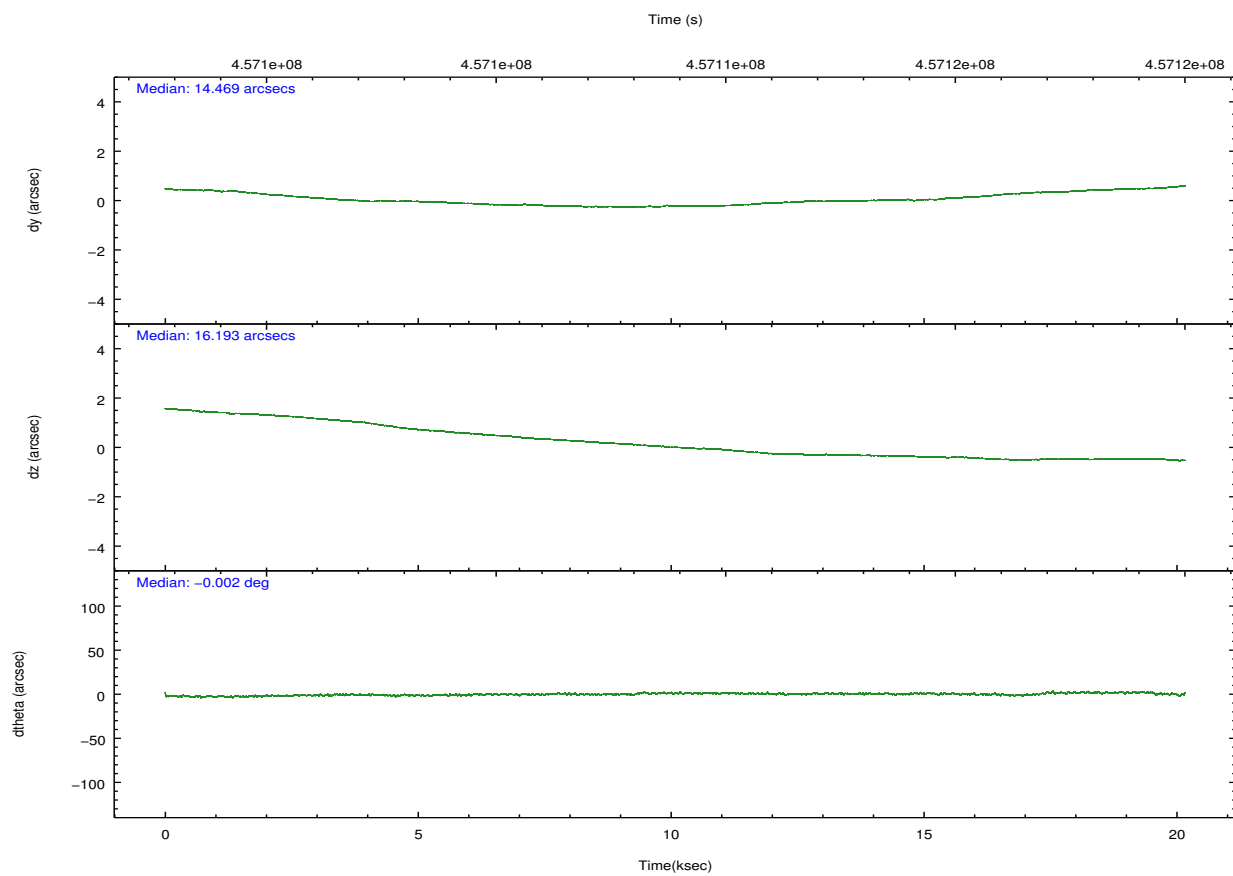
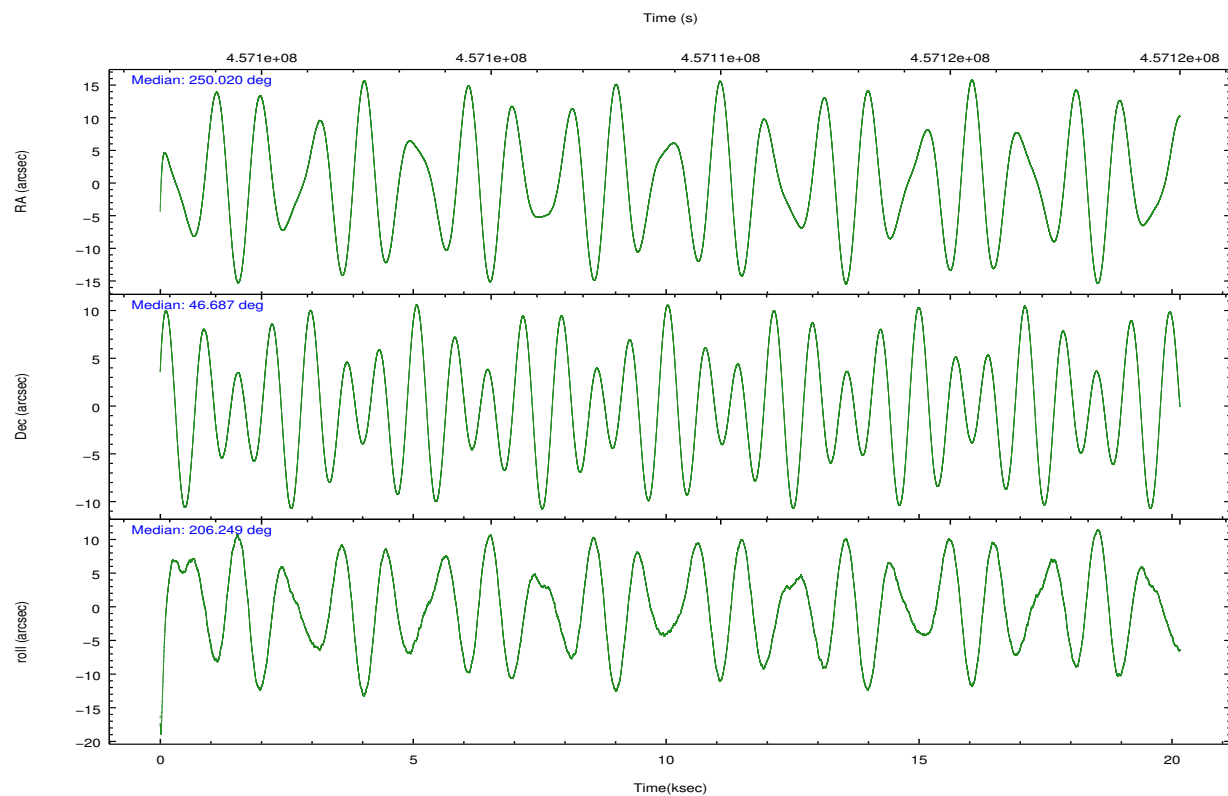
	ccd 0	ccd 1	ccd 2	ccd 3	ccd 6
grade 0 events	5403	6360	5873	29642	4914
	5%	5%	4%	20%	4%
grade 1 events	53	73	83	182	51
	0%	0%	0%	0%	0%
grade 2 events	3336	3748	3458	6183	3047
	3%	3%	2%	4%	2%
grade 3 events	1380	1601	1365	2464	1438
	1%	1%	1%	1%	1%
grade 4 events	1443	1537	1446	2335	1380
	1%	1%	1%	1%	1%
grade 5 events	5219	5622	4977	5995	5734
	4%	4%	4%	4%	4%
grade 6 events	2854	3228	2581	3498	3119
	2%	2%	2%	2%	2%
grade 7 events	87008	90727	100008	96712	98574
	81%	80%	83%	65%	83%

2.2 Compared Parameters

Parameter	Planned	Actual	Parameter	Planned	Actual
Instrument	ACIS	ACIS	Obspar format version number	7	7
Detector	ACIS-01236	ACIS-01236	Obspar file type	PREDICTED	ACTUAL
Grating	NONE	NONE	Obspar update status	NONE	UPDATED
Data mode	VFAINT	VFAINT	CCD I0 on	Y	Y
Observation mode	POINTING	POINTING	CCD I1 on	Y	Y
[deg] Pointing RA	250.042337	250.0201960376958	CCD I2 on	Y	Y
[deg] Pointing Dec	46.709911	46.68701114753203	CCD I3 on	Y	Y
[deg] Pointing Roll	206.029832	206.2546185120215	CCD S0 on	N	N
[mm] SIM focus pos	-0.782348	-0.7809083437167272	CCD S1 on	N	N
[mm] SIM defocus	0	0.001439871863259334	CCD S2 on	O1	Y
[mm] SIM translation stage pos	-226.292463	-226.2858628250985	CCD S3 on	N	N
[mm] SIM translation stage offset	-7.3	-7.306590177831225	CCD S4 on	N	N
[s] Observation start time (MET)	457098973.184000	457097994.96803	CCD S5 on	N	N
Observation start date	2012-06-26T11:55:07	2012-06-26T11:39:54	Number of optional ACIS chips dropped	0	0
[s] Observation end time (MET)	457118973.184000	457119461.54417	On-chip summing requested	N	N
Observation end date	2012-06-26T17:28:27	2012-06-26T17:37:41	Subarray requested	NONE	NONE
Read mode	TIMED	TIMED	Alternating exposures requested	N	N
			[s] Primary exposure time	0.000000	3.1

2.3 Aspect



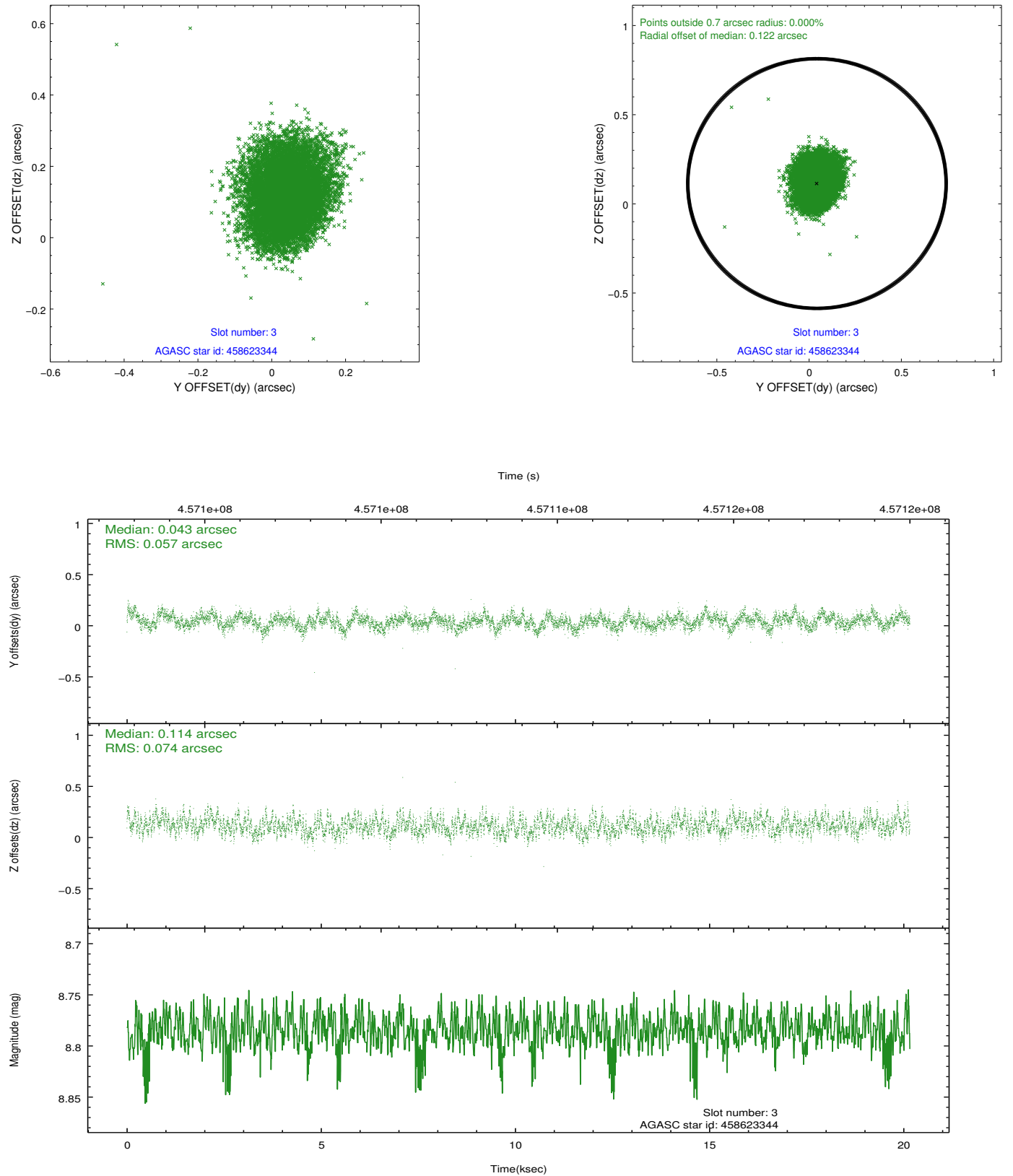


Slot Statistics

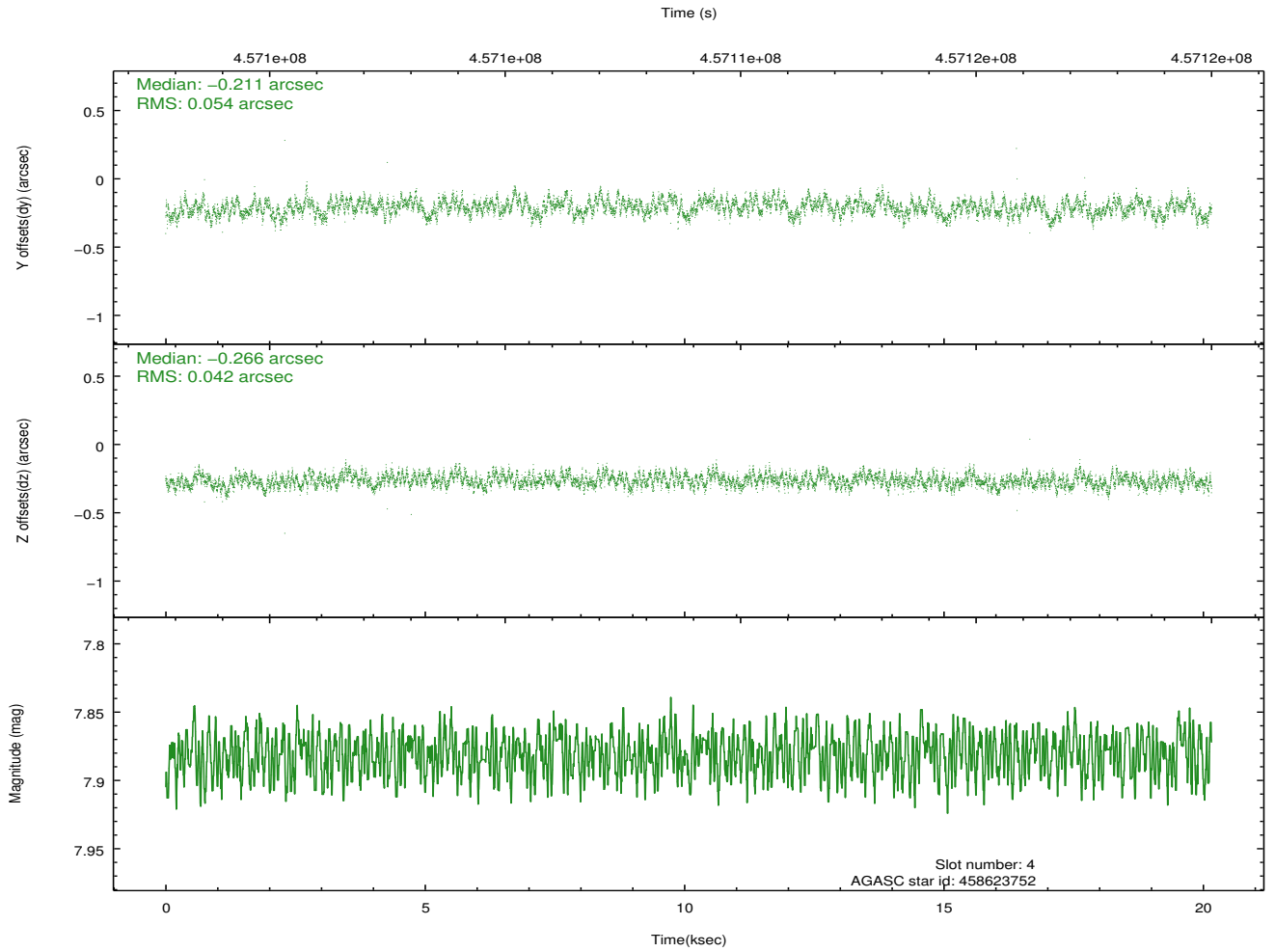
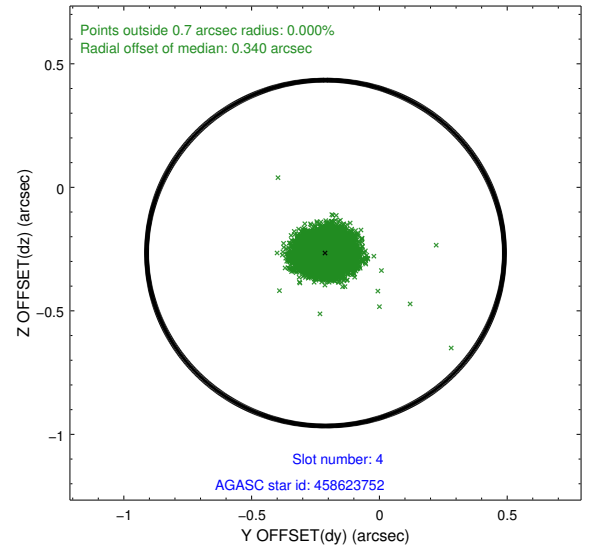
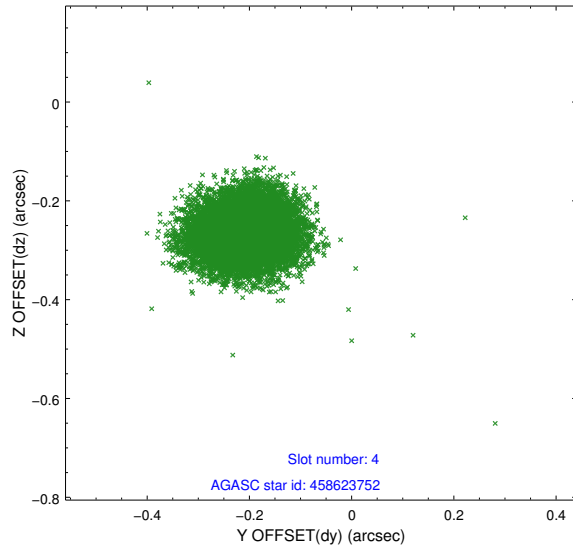
slot	status	id	mag	n_pts	med_dy	med_dz	dr1	dr2	ra	dec	mean_y	mean_z
0	FID	ACIS-I-2	6.98	4916	-0.107	-0.103	0.016	0.026	0.000000	0.000000	-769.86	-995.53
1	FID	ACIS-I-4	6.93	4916	0.199	0.092	0.014	0.022	0.000000	0.000000	2144.38	910.67
2	FID	ACIS-I-5	7.02	4918	-0.192	0.081	0.016	0.026	0.000000	0.000000	-1823.15	907.79
3	GUIDE	458623344	8.78	9834	0.043	0.114	0.100	0.160	250.330399	47.465003	-1823.43	-2135.91
4	GUIDE	458623752	7.88	9835	-0.211	-0.266	0.073	0.116	249.631548	46.393849	1414.51	572.44
5	GUIDE	458626288	8.94	9826	-0.038	0.213	0.080	0.127	250.637186	47.079533	-1895.94	-560.25
6	GUIDE	458626368	8.16	9831	0.310	0.015	0.080	0.126	249.060506	46.794229	2035.11	-1347.75
7	GUIDE	458634664	9.23	9828	-0.097	-0.079	0.106	0.175	251.009501	46.332103	-1569.66	2263.45

2.4 Star Slots

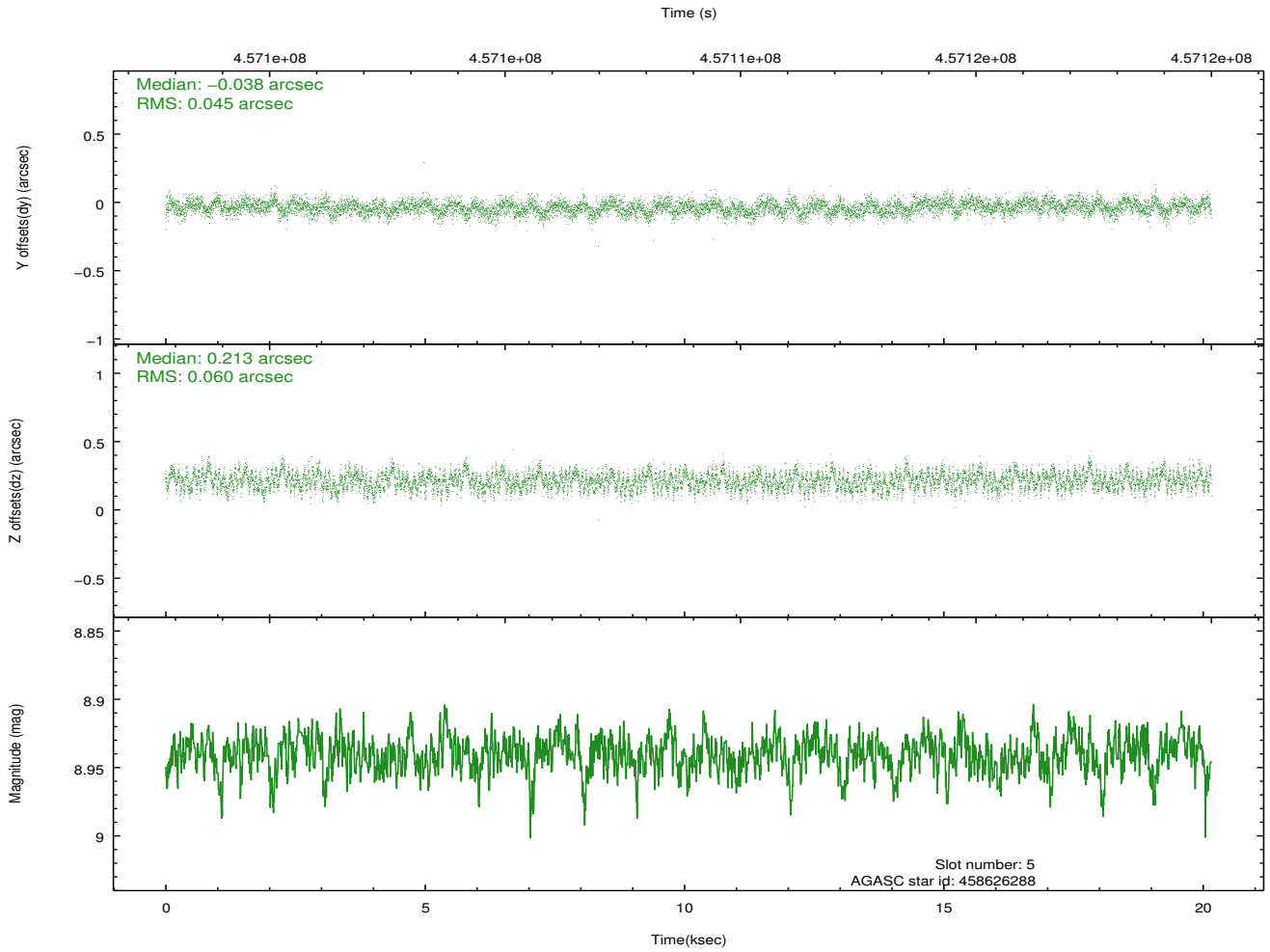
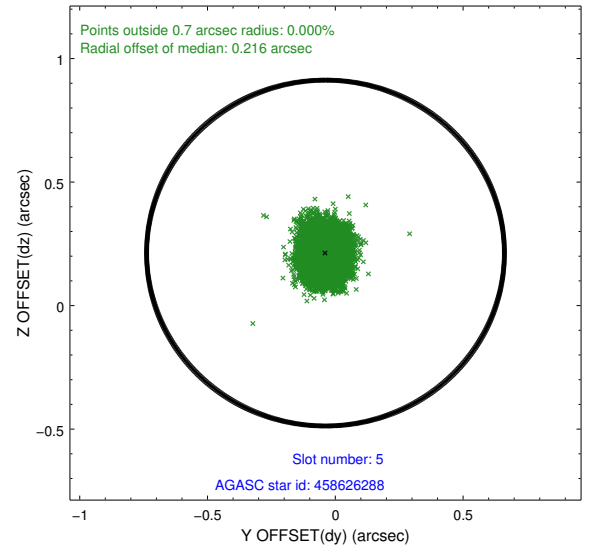
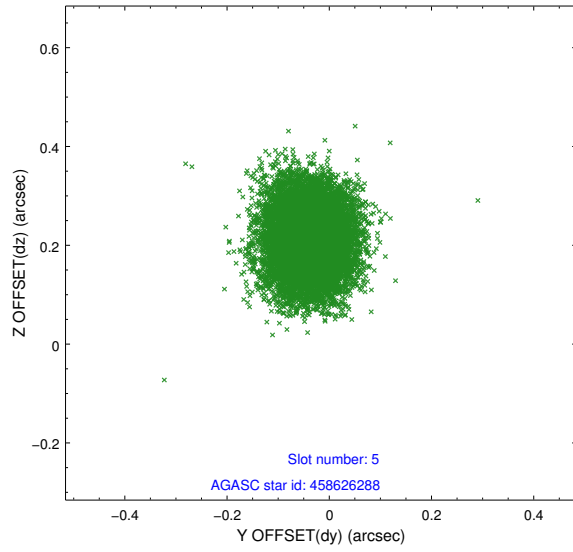
2.4.1 Slot 3



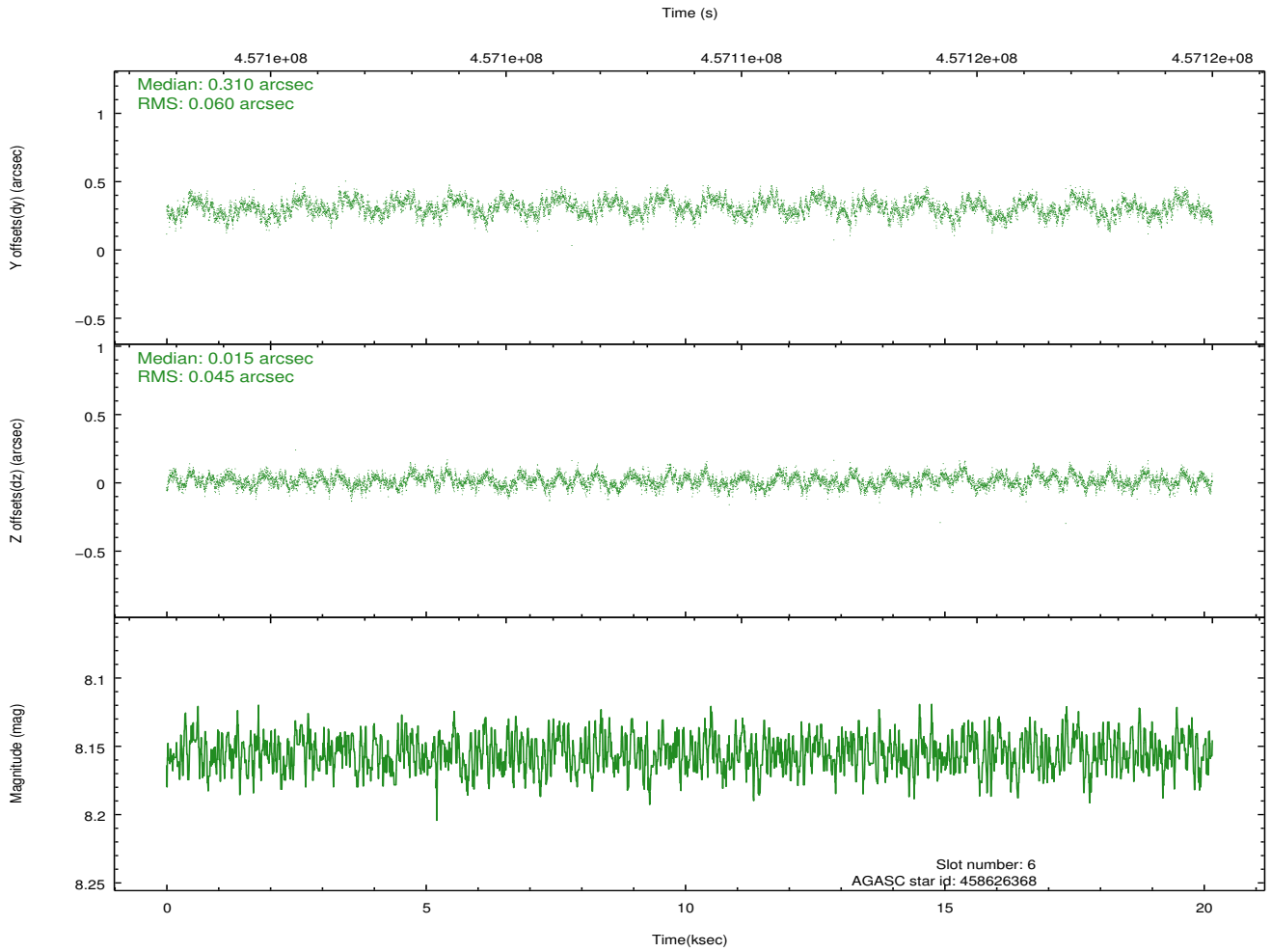
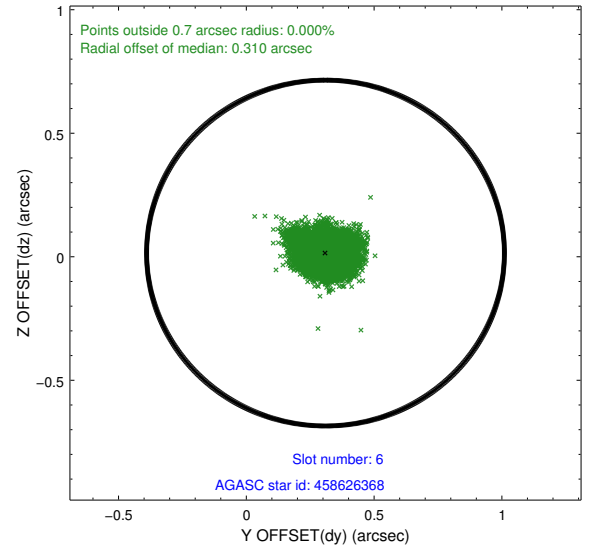
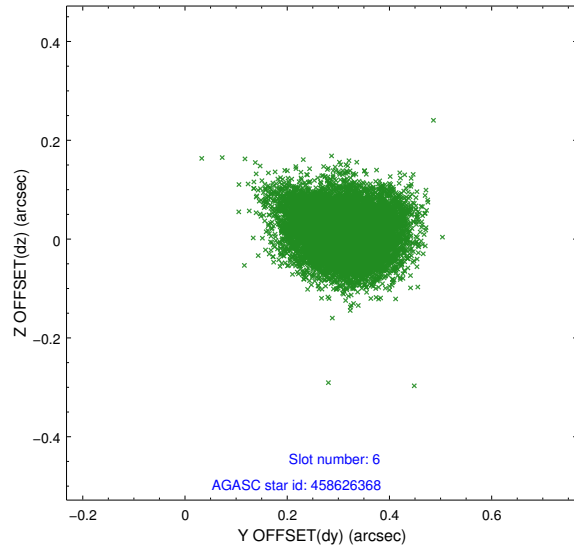
2.4.2 Slot 4



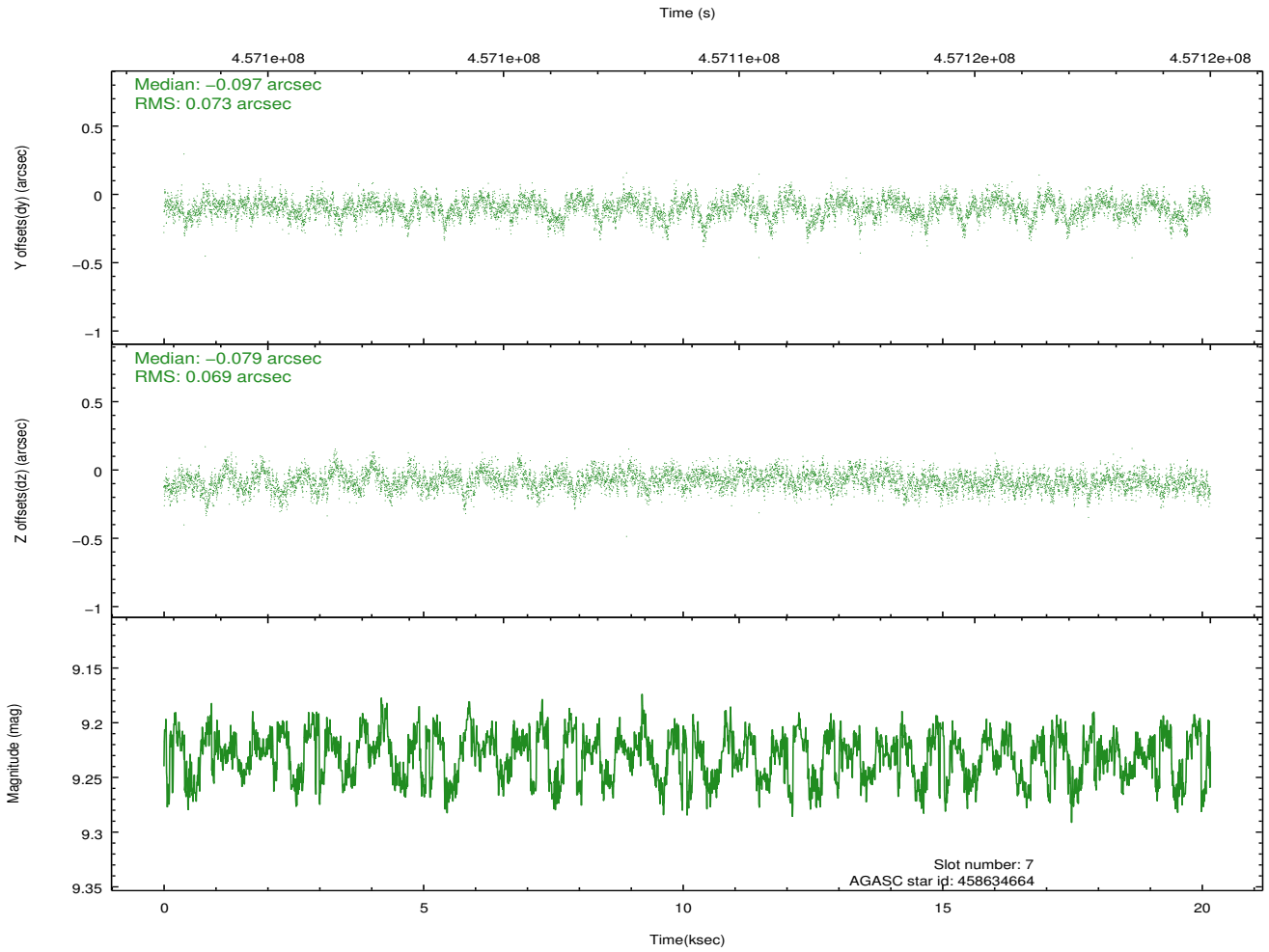
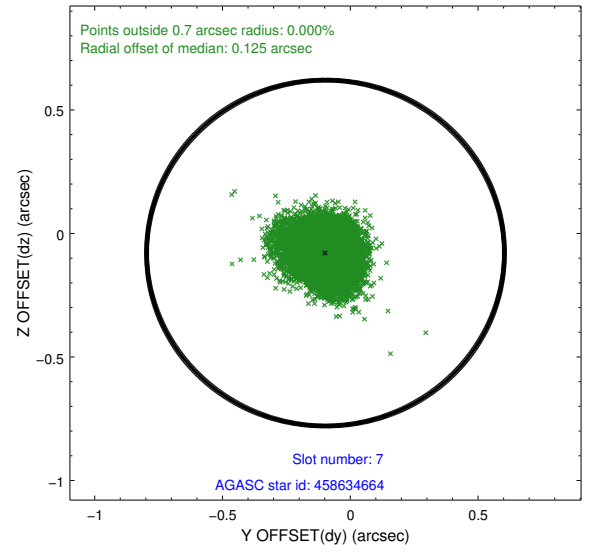
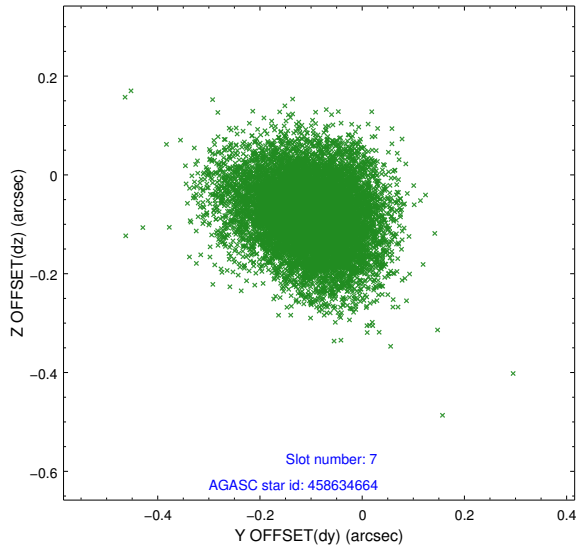
2.4.3 Slot 5



2.4.4 Slot 6

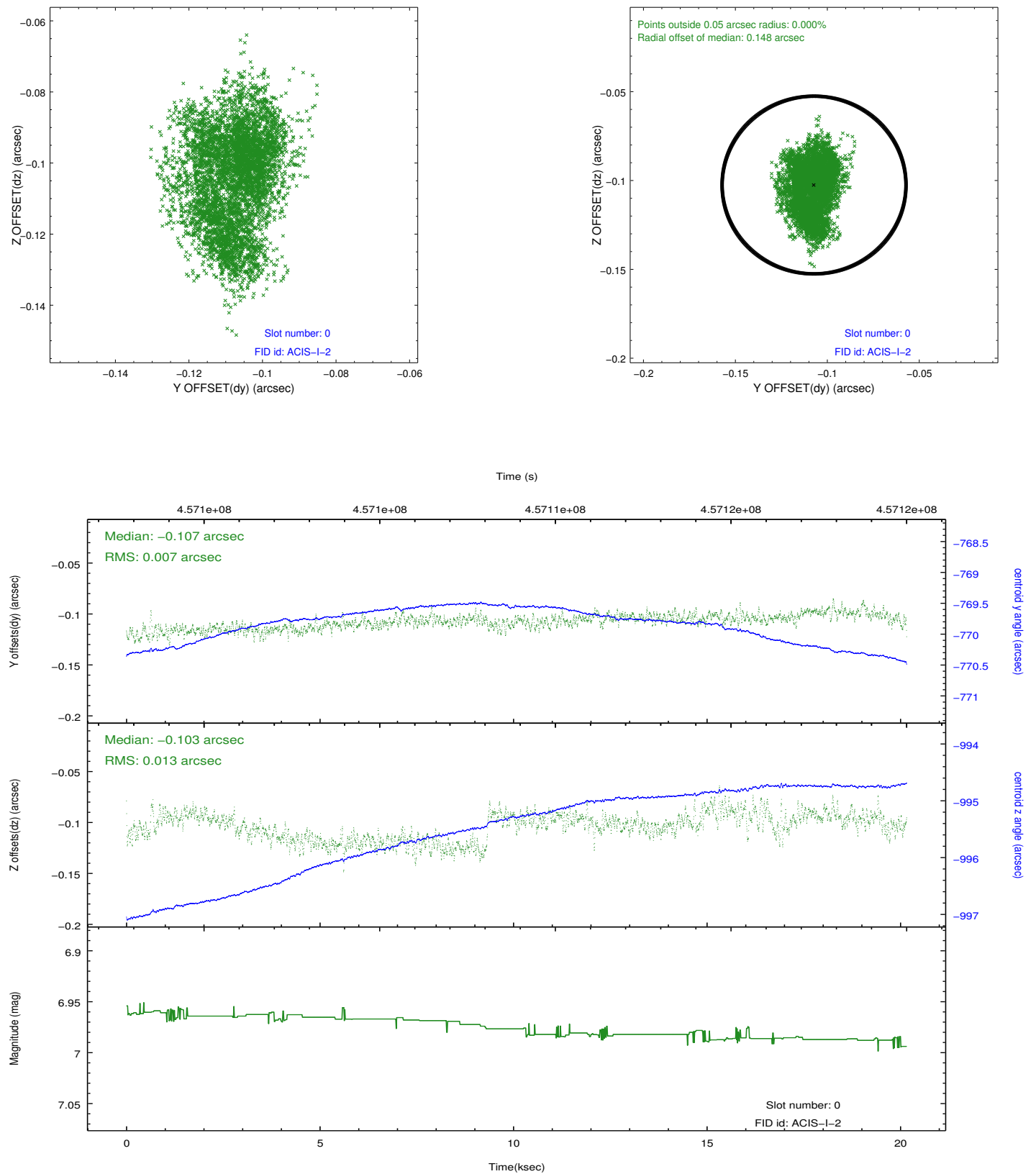


2.4.5 Slot 7

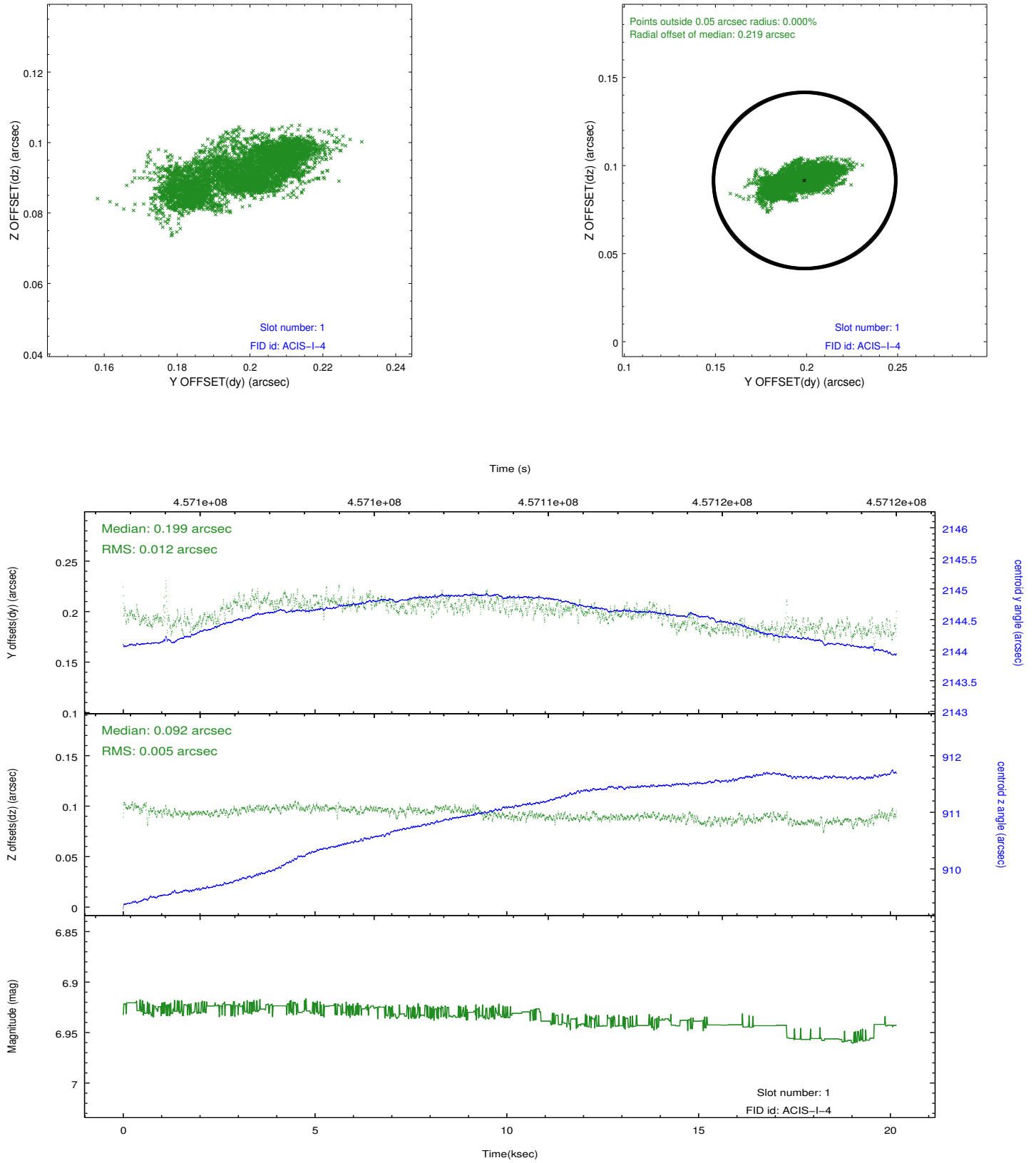


2.5 FID Slots

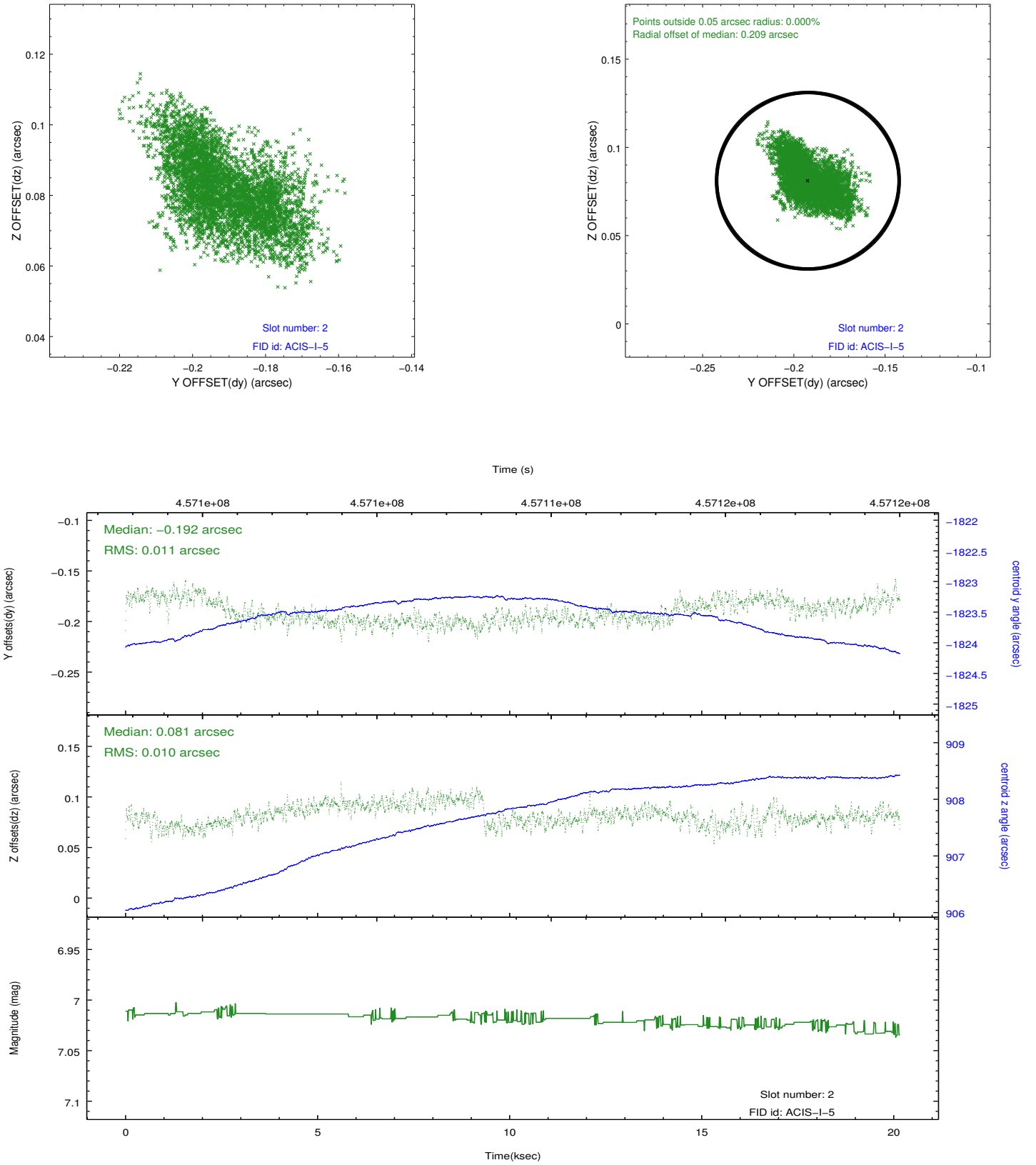
2.5.1 Slot 0



2.5.2 Slot 1



2.5.3 Slot 2



A Summary

A.1 Status

V&V Scientist	Joy Nichols
V&V Date (YYYY-MM-DD)	2012.06.28
V&V Edition	1
V&V Disposition and Status	OK
V&V Charge Time	20.081800154448

A.2 Comments