

V&V Reference Report

L2 ASCDS Version : 8.4.5

Observation 14191 - L2 Version 2
Chandra X-Ray Center

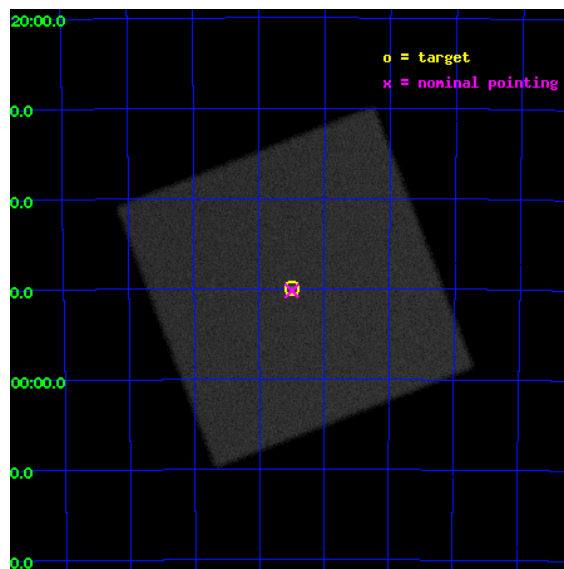
L2 Processing Date : Jul 28 2012

Contents

1	Front	2
2	OBI	3
2.1	OBI	3
2.1.1	Images	3
2.1.2	Parameters	4
2.1.3	Events	4
2.2	Compared Parameters	5
2.3	Aspect	6
2.4	Star Slots	9
2.4.1	Slot 3	9
2.4.2	Slot 4	10
2.4.3	Slot 5	11
2.4.4	Slot 6	12
2.4.5	Slot 7	13
2.5	FID Slots	14
2.5.1	Slot 0	14
2.5.2	Slot 1	15
2.5.3	Slot 2	16
A	Summary	17
A.1	Status	17
A.2	Comments	17

1 Front

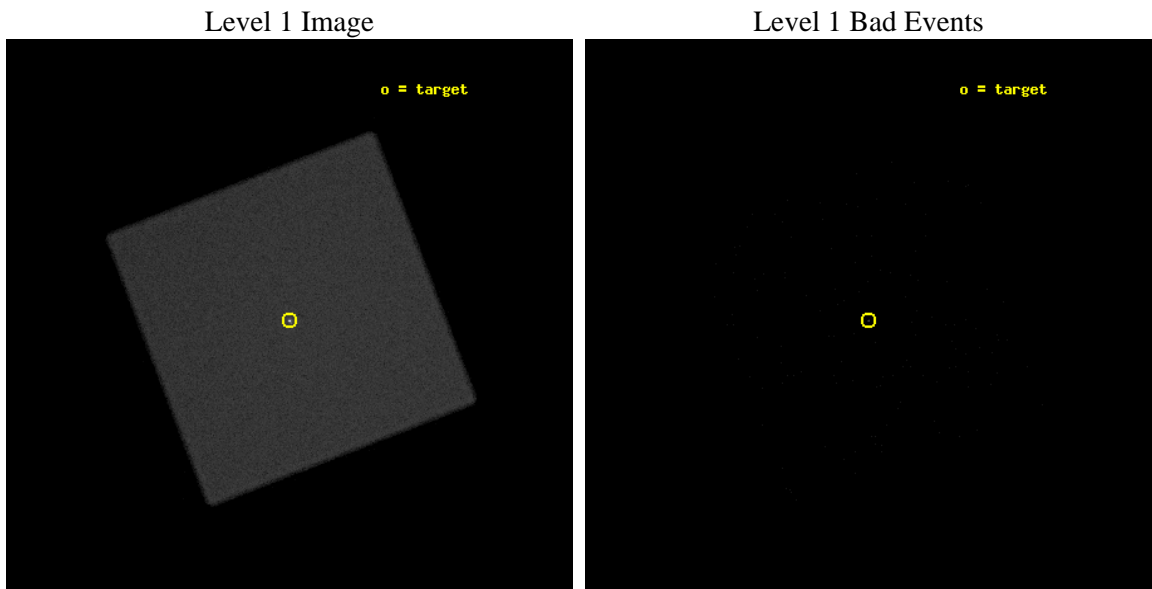
seq_num	200821	Sequence number
obs_id	14191	Observation id
title	Alpha Cen: Climbing out of a Coronal Recession?	Proposal title
observer	Dr. Thomas Ayres	Principal investigator
object	ALPHA CEN	Source name
ra_targ	219.874167	Observer's specified target RA [deg]
dec_targ	-60.833139	Observer's specified target Dec [deg]
ra_nom	219.87425452603	Nominal RA [deg]
dec_nom	-60.837236141993	Nominal Dec [deg]
roll_nom	293.93082502884	Nominal Roll [deg]
revision	2	Processing version of data
ontime	10188.500542641	[s]
livetime	10095.688954269	Ontime multiplied by DTCOR
l2events	694972	Number of level 2 events



2 OBI

2.1 OBI

2.1.1 Images



2.1.2 Parameters

obi_num	1	Obi number	sched_exp_time	10000.000000	[s] Scheduled observation exposure time
ascdsver	8.4.5	Processing system revision	ontime	10188.500542641	[s]
caldsver	4.5.1	 	l1events	1016362	Number of level 1 events
date	2012-07-28T10:34:48	Date and time of file creation			
revision	2	Processing version of data			

2.1.3 Events

Level 1 Events

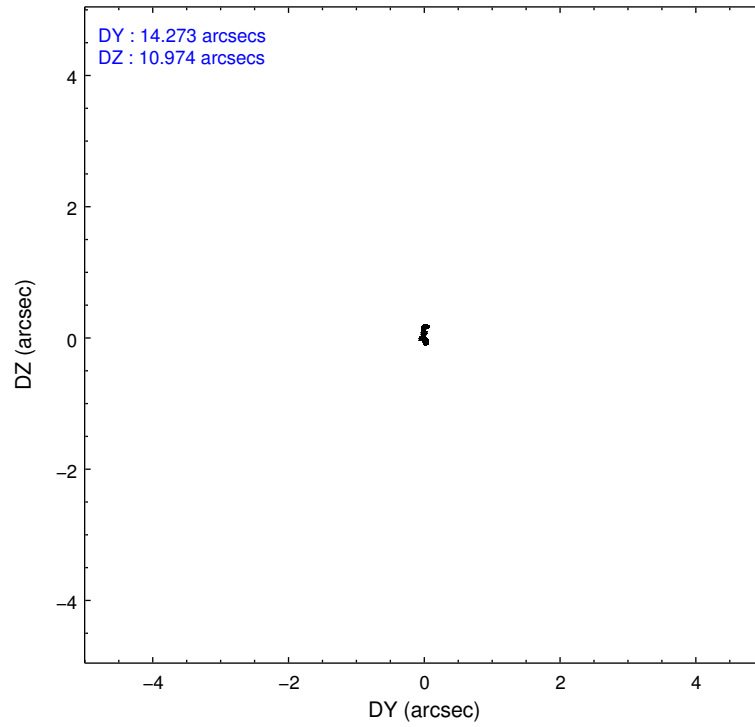
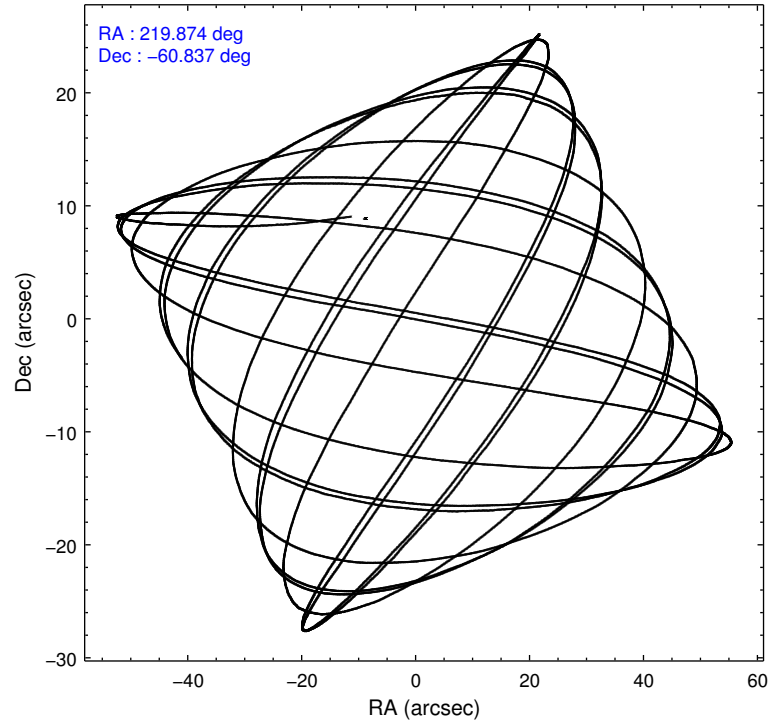
	segment 0
level 1 events	1016362
rejected events	71656
rejected %	7%

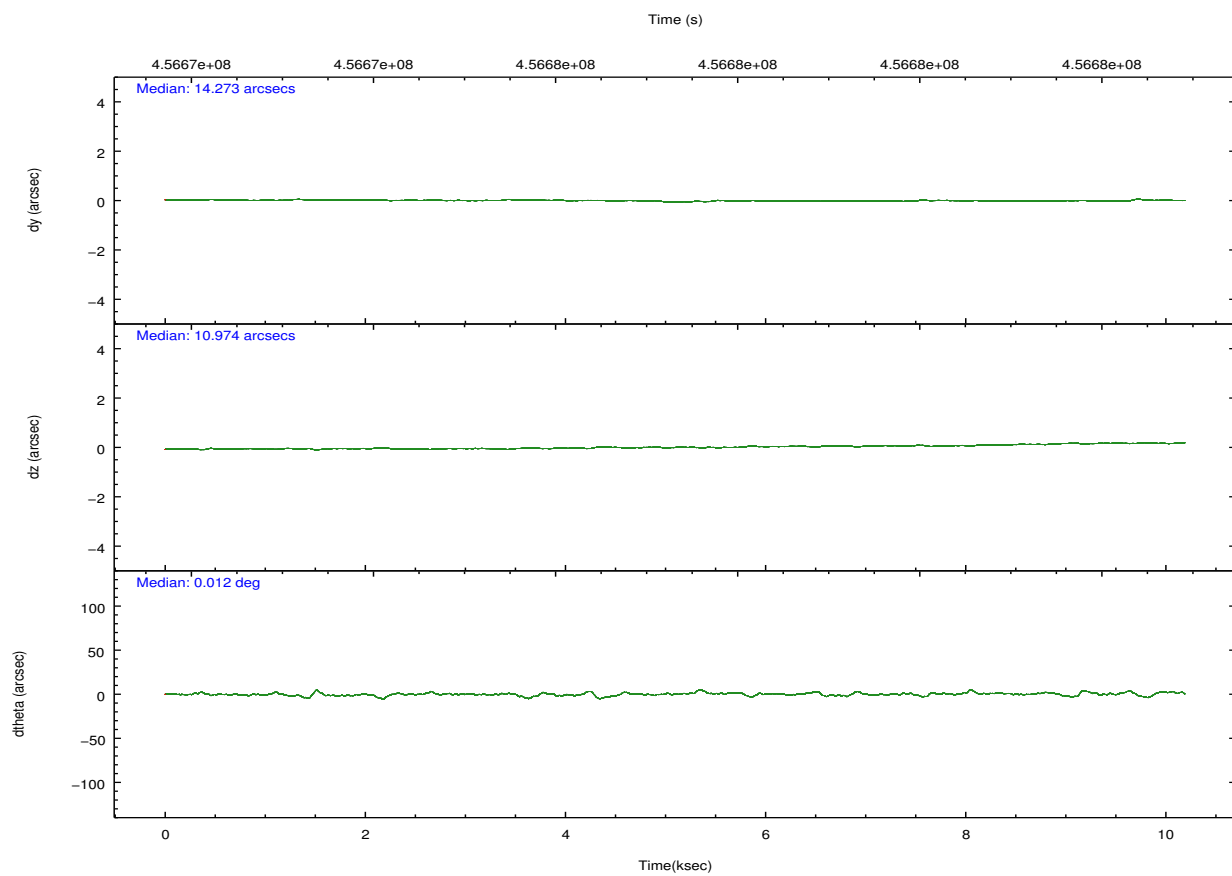
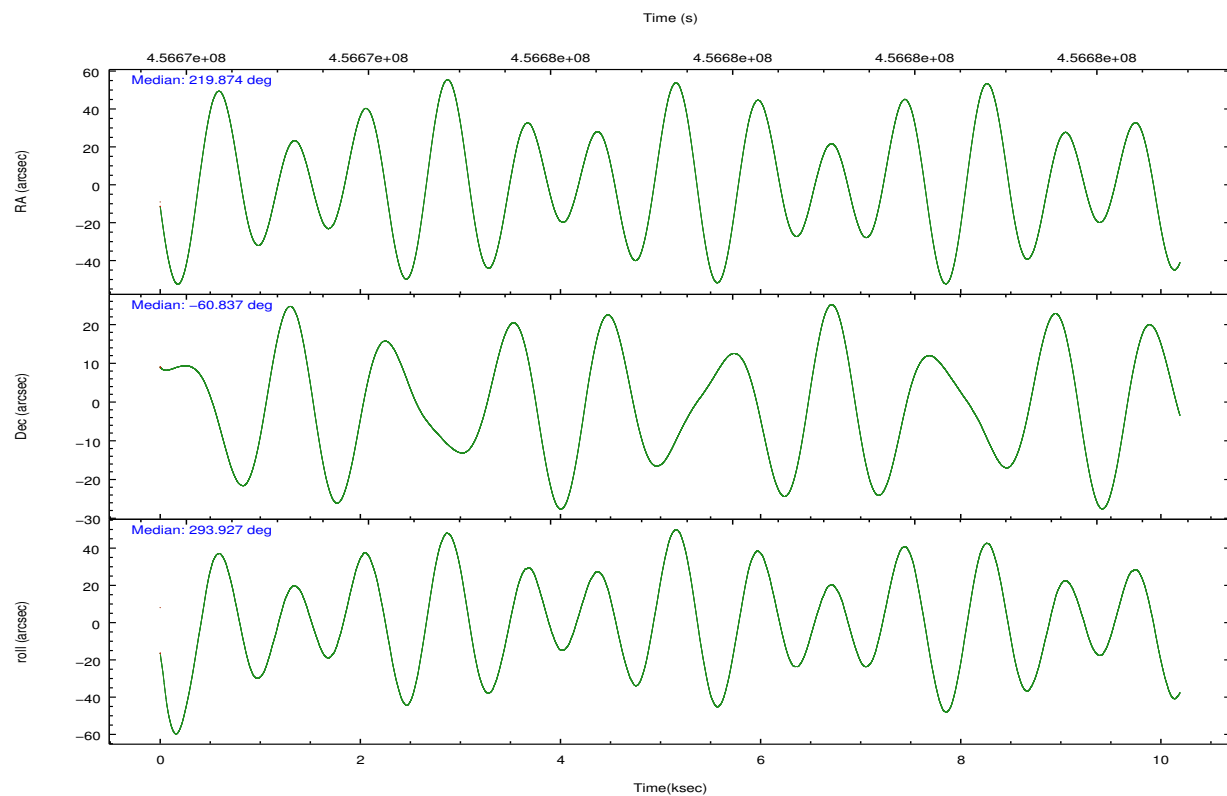
2.2 Compared Parameters

Parameter	Planned	Actual
Instrument	HRC	HRC
Detector	HRC-I	HRC-I
Grating	NONE	NONE
Data mode	OBSERVING	OBSERVING
Observation mode	POINTING	POINTING
[deg] Pointing RA	219.828677	219.8742545260297
[deg] Pointing Dec	-60.821844	-60.83723614199322
[deg] Pointing Roll	293.986513	293.9308250288417
[mm] SIM focus pos	-1.040293	-1.038866356238299
[mm] SIM defocus	0	0.001426264420575141
[mm] SIM translation stage pos	126.985494	126.9829799899862
[mm] SIM translation stage offset	0	0.002508901615314585
[s] Observation start time (MET)	456672414.184000	456671467.33276
Observation start date	2012-06-21T13:25:48	2012-06-21T13:11:07
[s] Observation end time (MET)	456682414.184000	456683332.73339
Observation end date	2012-06-21T16:12:28	2012-06-21T16:28:52

Parameter	Planned	Actual
Obspar format version number	7	7
Obspar file type	PREDICTED	ACTUAL
Obspar update status	NONE	UPDATED

2.3 Aspect



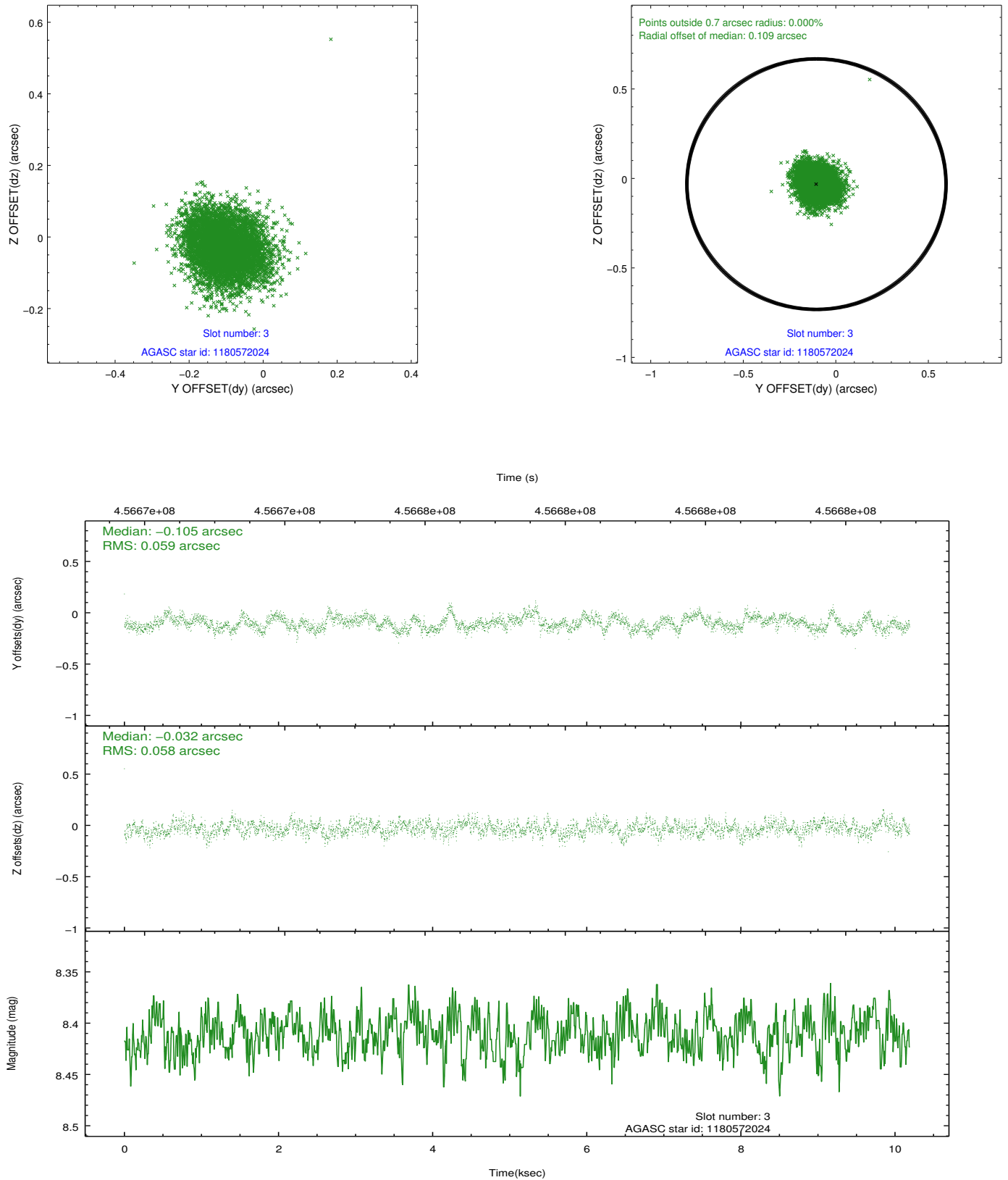


Slot Statistics

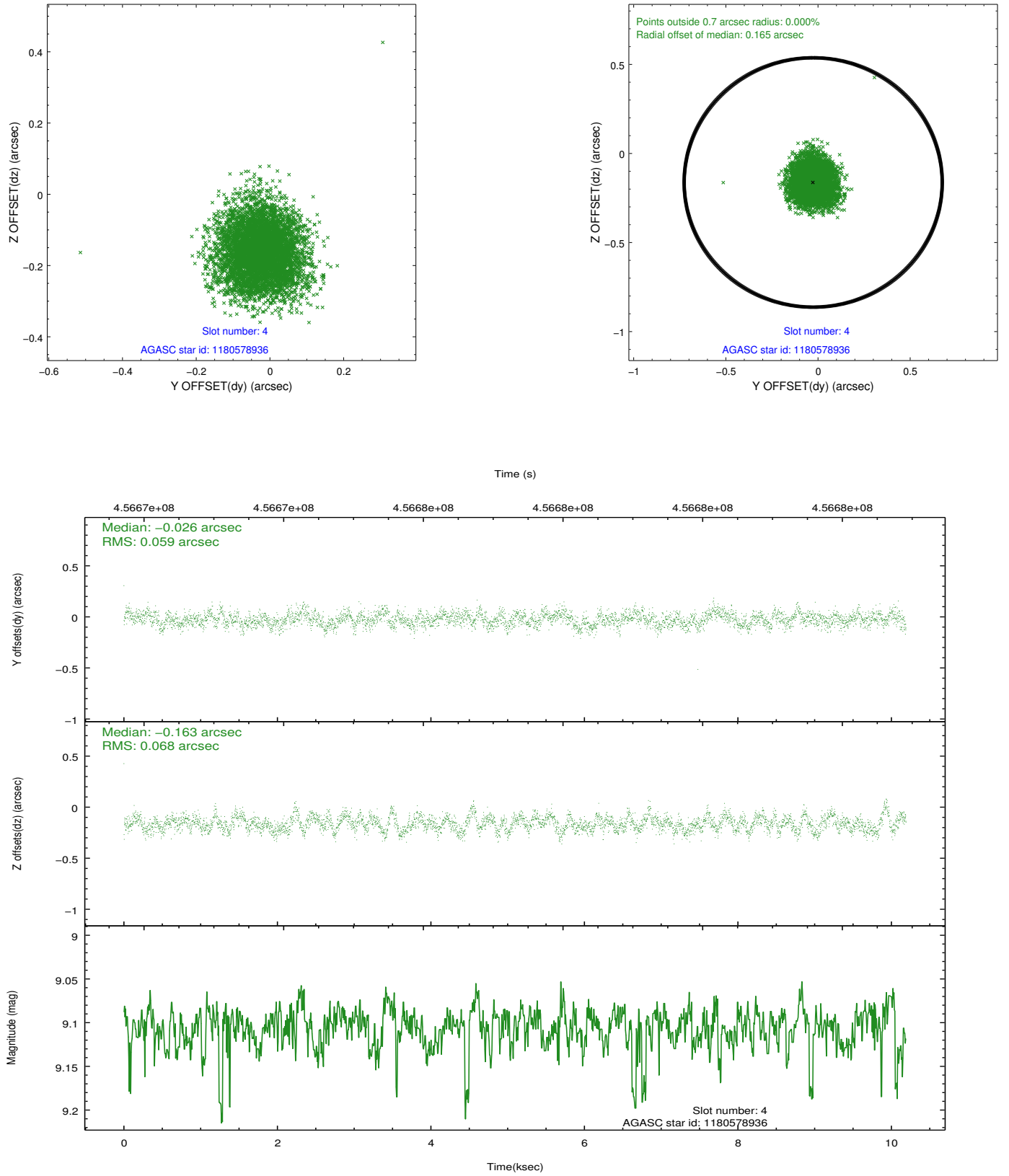
slot	status	id	mag	n_pts	med_dy	med_dz	dr1	dr2	ra	dec	mean_y	mean_z
0	FID	HRC-I-1	6.94	2486	-0.153	-0.070	0.012	0.034	0.000000	0.000000	-770.28	-1298.99
1	FID	HRC-I-2	6.98	2486	0.195	-0.051	0.013	0.030	0.000000	0.000000	842.39	-1301.14
2	FID	HRC-I-4	6.95	2486	0.075	0.030	0.009	0.026	0.000000	0.000000	1273.20	1002.65
3	GUIDE	1180572024	8.41	4970	-0.105	-0.032	0.089	0.140	220.930377	-60.981487	1322.61	1517.85
4	GUIDE	1180578936	9.11	4945	-0.026	-0.163	0.097	0.155	220.919358	-61.155393	1882.49	1236.66
5	GUIDE	1180589152	9.27	4954	0.056	0.139	0.118	0.188	219.760705	-61.382926	1799.27	-927.48
6	GUIDE	1180589192	8.79	4966	0.080	0.111	0.090	0.147	218.755496	-60.392327	-2173.06	-1121.62
7	GUIDE	1180612104	9.01	4962	-0.007	-0.055	0.102	0.161	220.502279	-60.631704	-136.05	1362.29

2.4 Star Slots

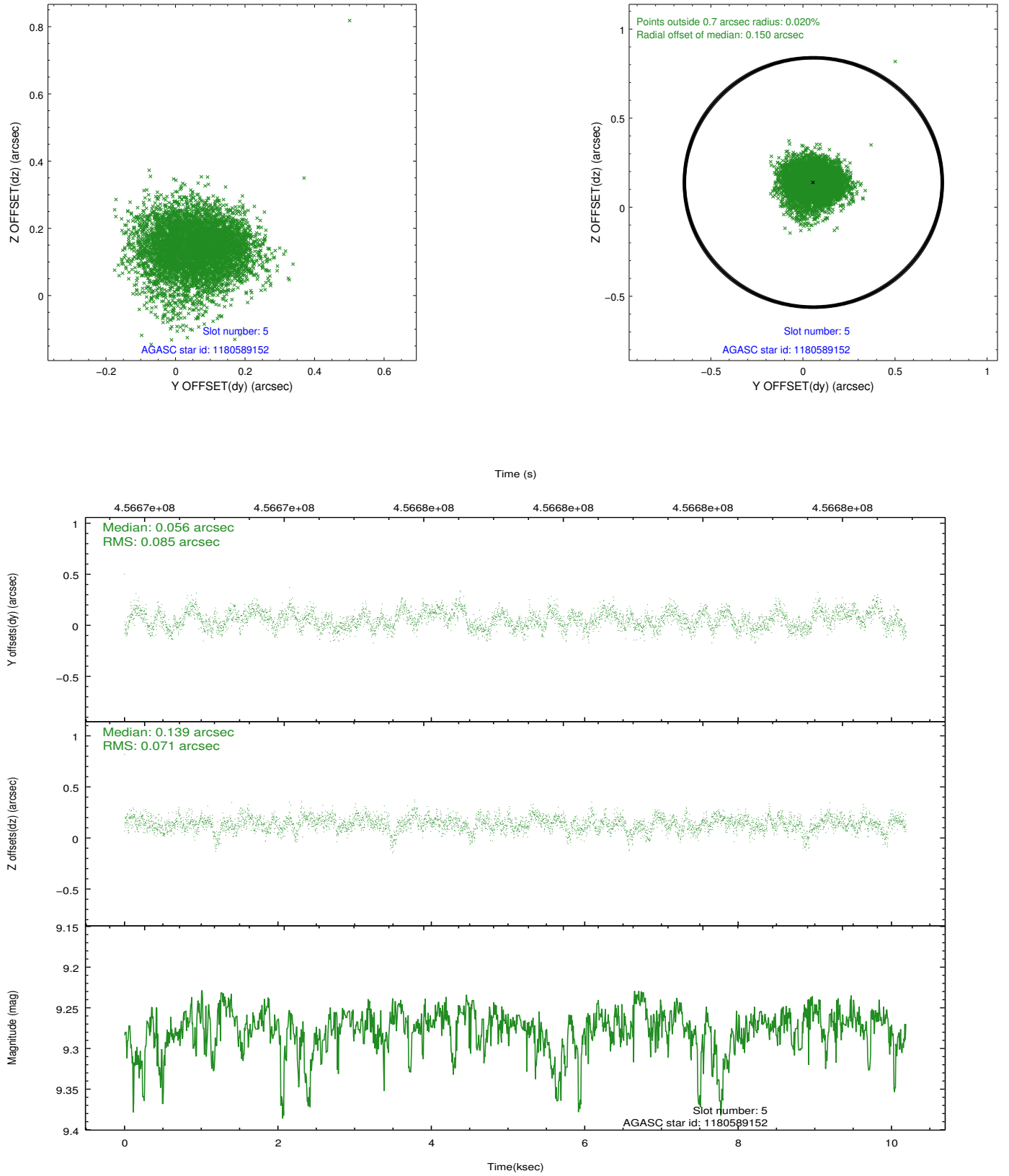
2.4.1 Slot 3



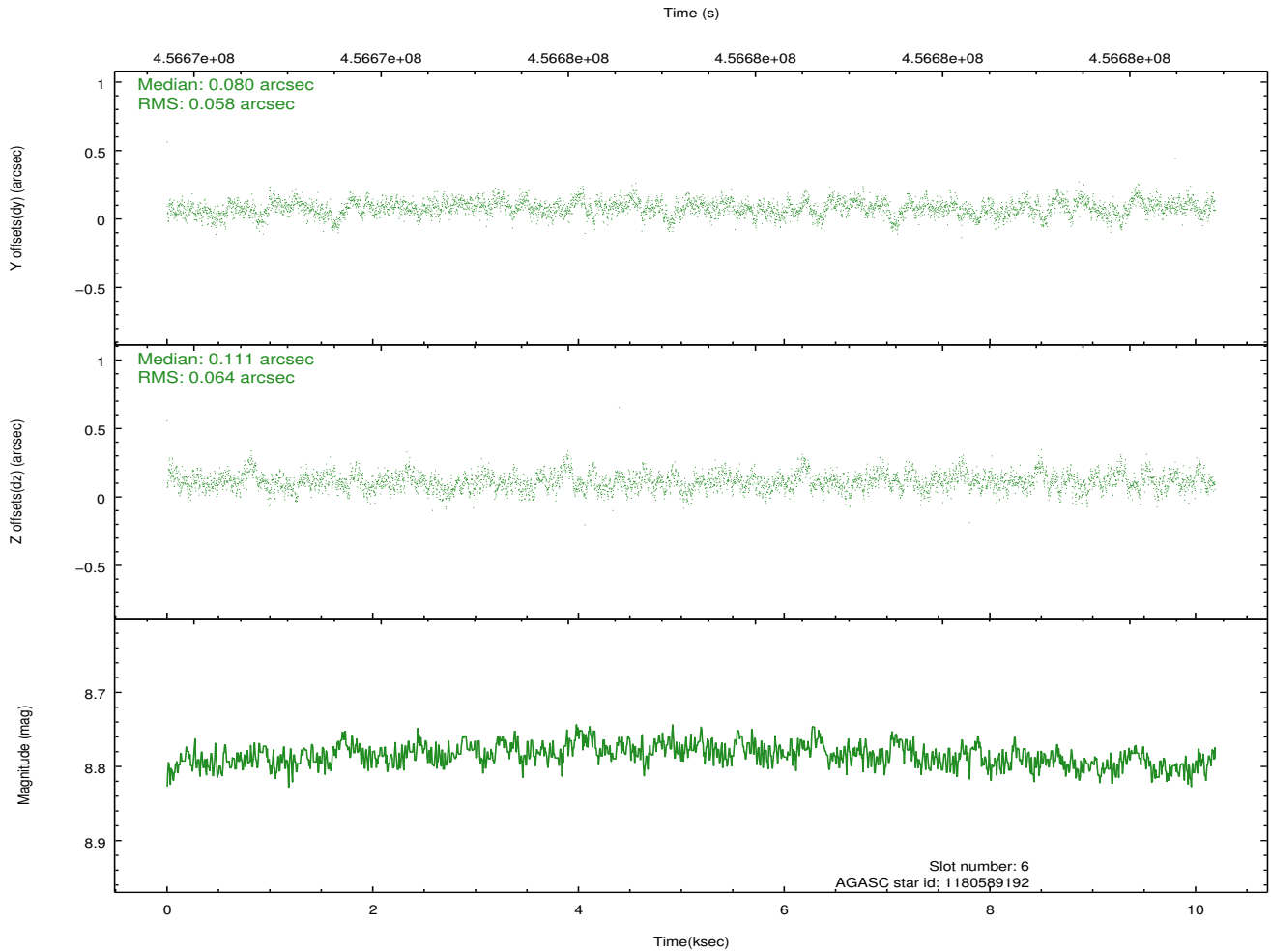
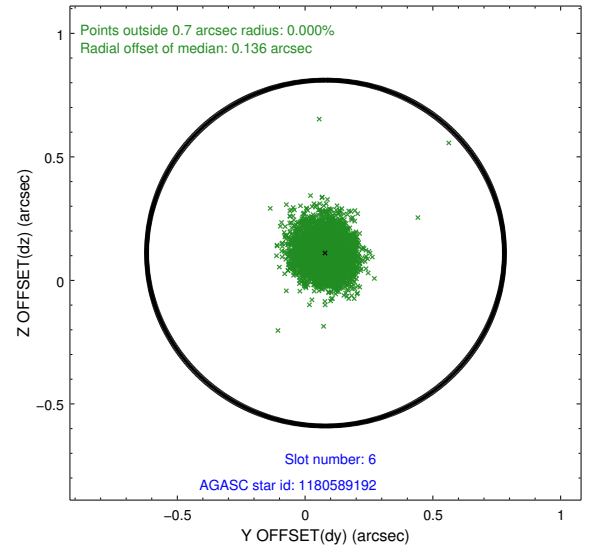
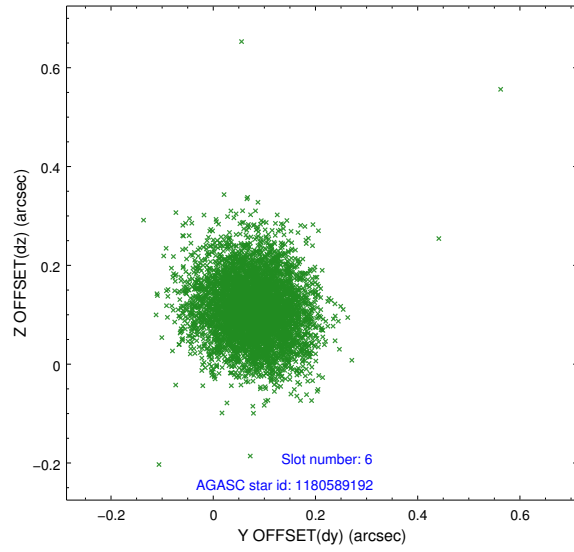
2.4.2 Slot 4



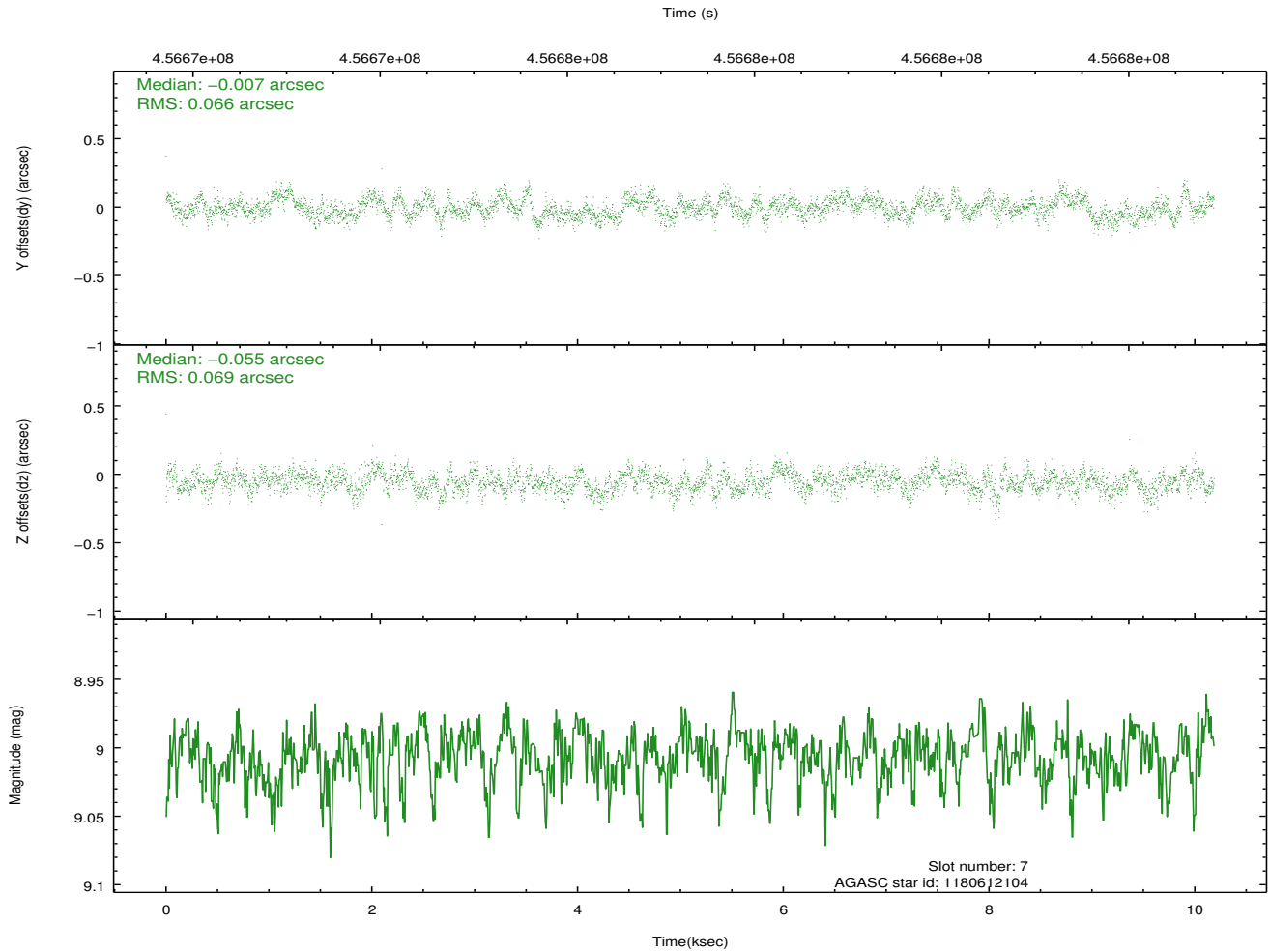
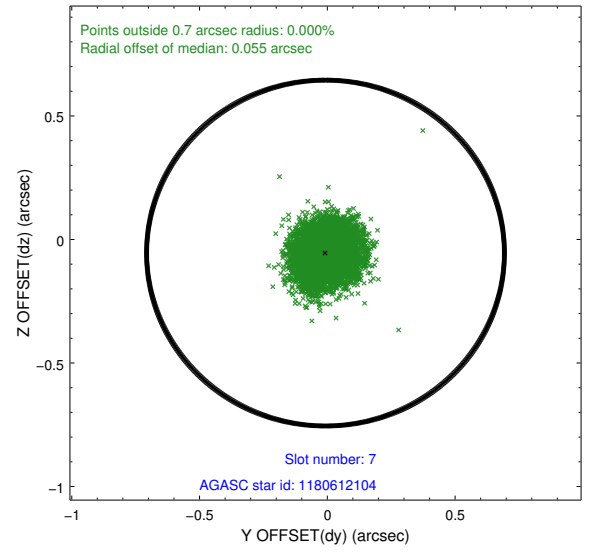
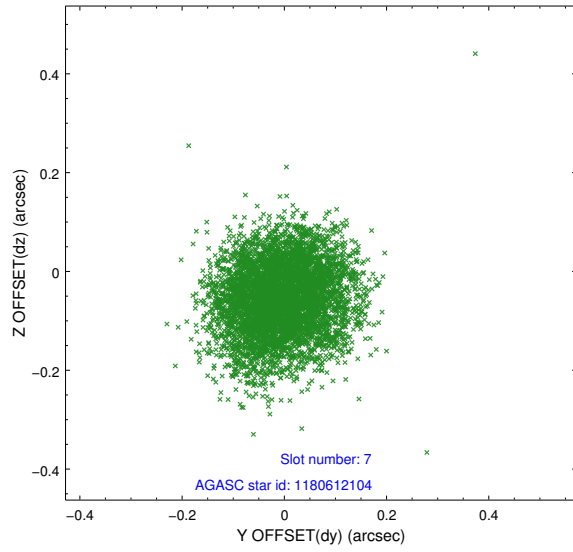
2.4.3 Slot 5



2.4.4 Slot 6

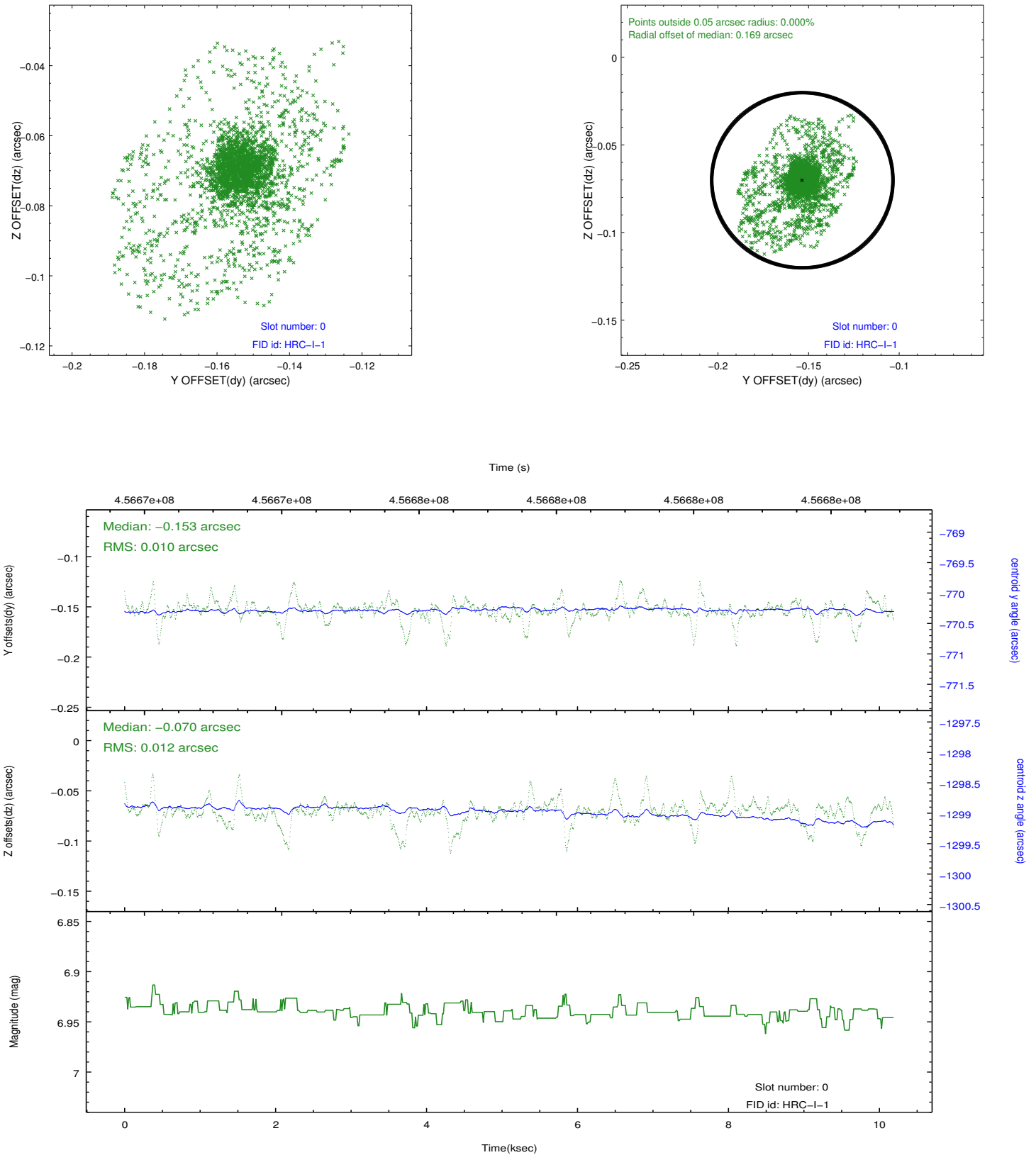


2.4.5 Slot 7

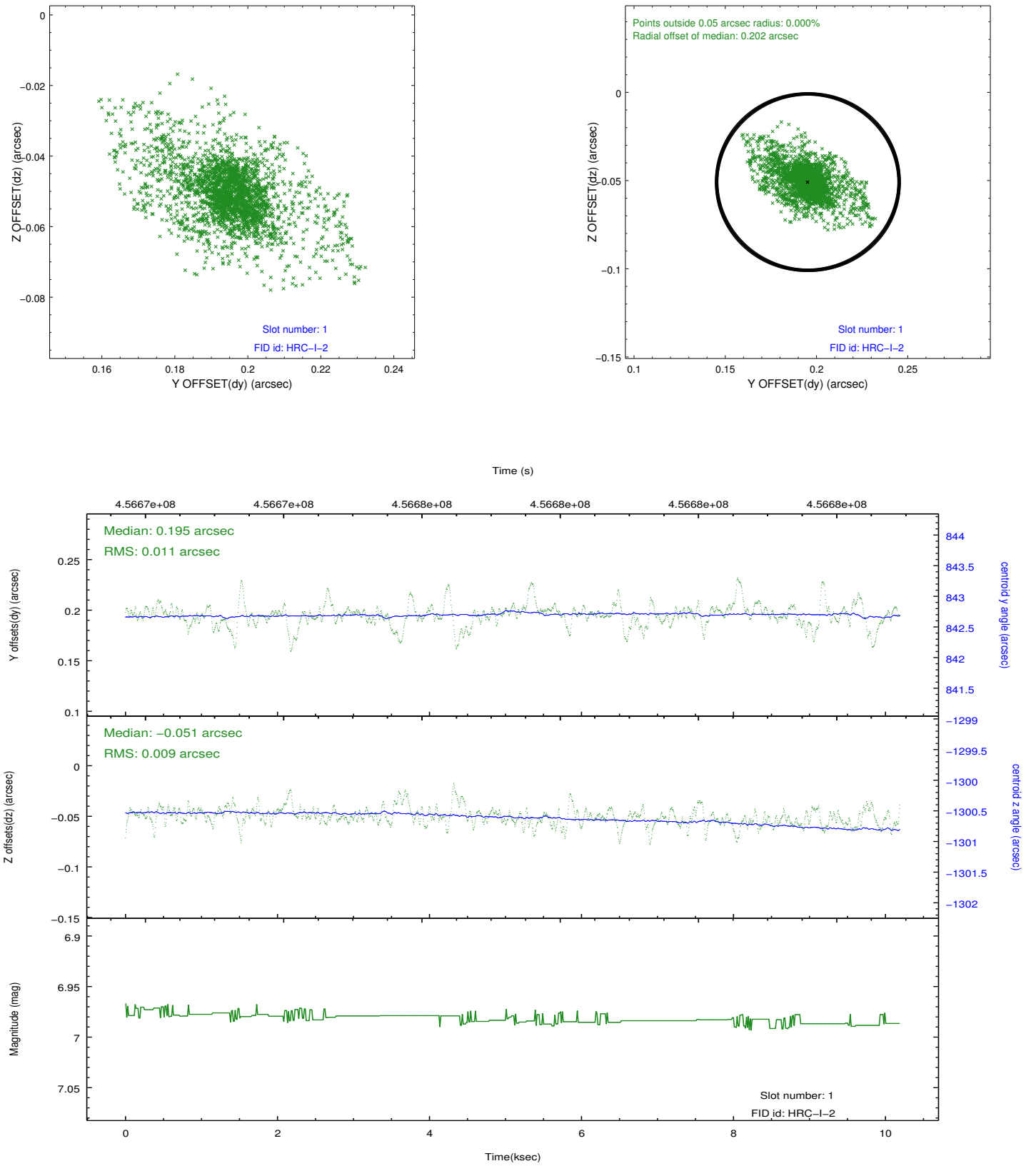


2.5 FID Slots

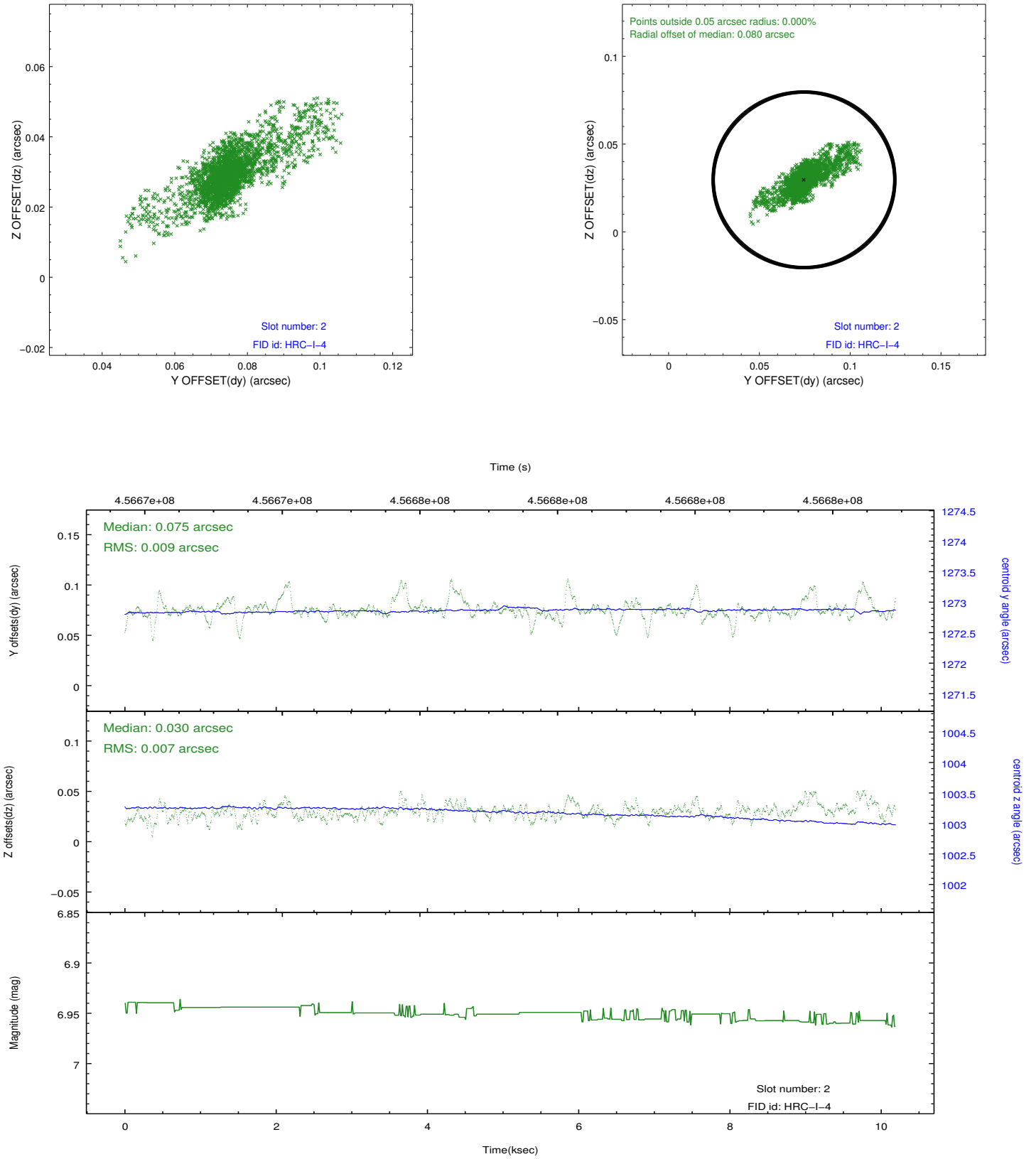
2.5.1 Slot 0



2.5.2 Slot 1



2.5.3 Slot 2



A Summary

A.1 Status

V&V Scientist	Beth Sundheim
V&V Date (YYYY-MM-DD)	2012.07.29
V&V Edition	1
V&V Disposition and Status	OK
V&V Charge Time	10.188500542641

A.2 Comments

Joint proposal with HST.