

# V&V Reference Report

## L2 ASCDS Version : 8.4.3

Observation 13891 - L2 Version 1  
Chandra X-Ray Center

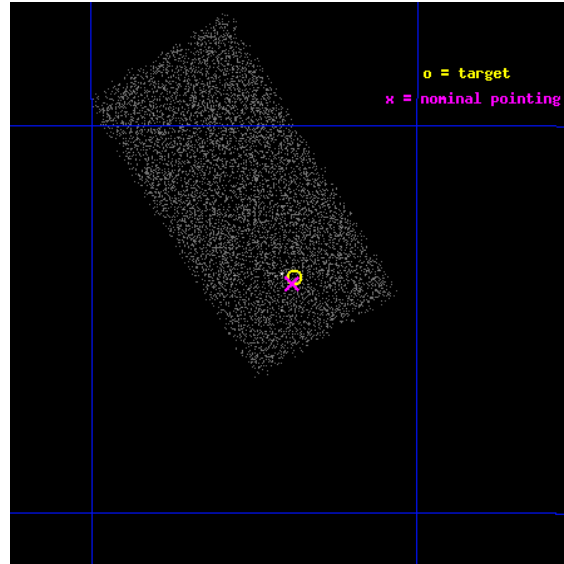
L2 Processing Date : Feb 19 2012

## Contents

<b>1</b>	<b>Front</b>	<b>2</b>
<b>2</b>	<b>OBI</b>	<b>3</b>
2.1	OBI . . . . .	3
2.1.1	Images . . . . .	3
2.1.2	Bias . . . . .	3
2.1.3	Parameters . . . . .	4
2.1.4	Events . . . . .	4
2.2	Compared Parameters . . . . .	5
2.3	Aspect . . . . .	6
2.4	Star Slots . . . . .	9
2.4.1	Slot 3 . . . . .	9
2.4.2	Slot 4 . . . . .	10
2.4.3	Slot 5 . . . . .	11
2.4.4	Slot 6 . . . . .	12
2.4.5	Slot 7 . . . . .	13
2.5	FID Slots . . . . .	14
2.5.1	Slot 0 . . . . .	14
2.5.2	Slot 1 . . . . .	15
2.5.3	Slot 2 . . . . .	16
<b>A</b>	<b>Summary</b>	<b>17</b>
A.1	Status . . . . .	17
A.2	Comments . . . . .	17

# 1 Front

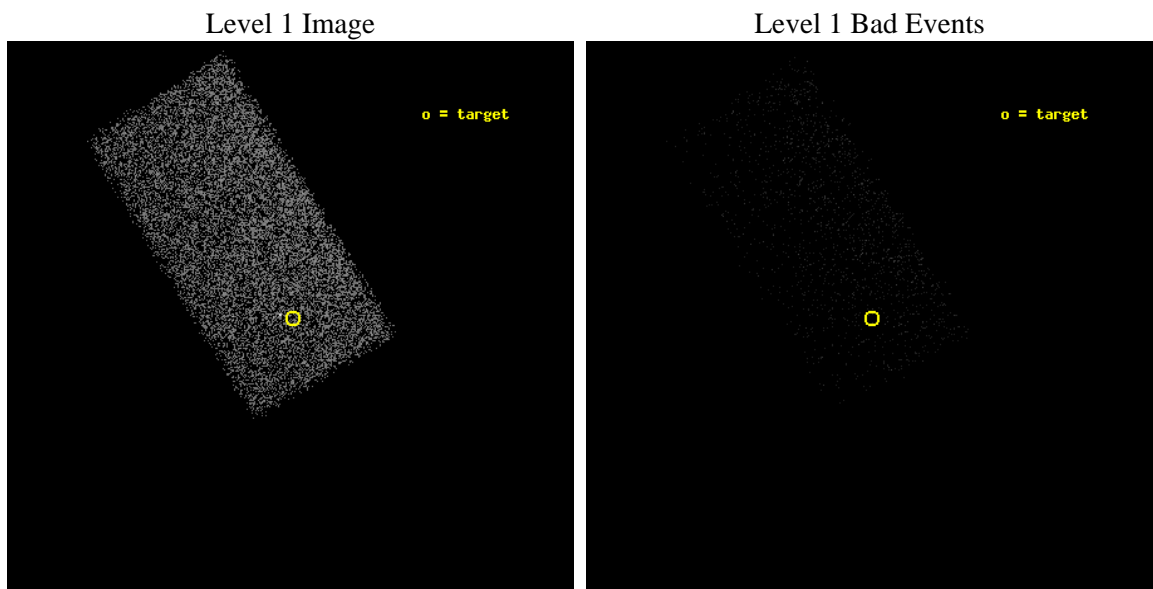
seq_num	702616	Sequence number
obs_id	13891	Observation id
title	CHANDRA SURVEY OF DUAL ACTIVATION IN HARD X-RAY SELECTED MERGING AGN HOSTS	Proposal title
observer	Dr. Richard Mushotzky	Principal investigator
object	NGC 454	Source name
dtcycle	0	&#160
cycle	P	events from which exps? Prim/Second/Both
ra_targ	18.59375	Observer's specified target RA [deg]
dec_targ	-55.398722	Observer's specified target Dec [deg]
ra_nom	18.596174172185	Nominal RA [deg]
dec_nom	-55.401433801962	Nominal Dec [deg]
roll_nom	238.49059427502	Nominal Roll [deg]
revision	1	Processing version of data
ontime	5069.4888023734	Sum of GTIs [s]
livetime	4934.4813915019	Livetime [s]
ontime7	5069.4888023734	Sum of GTIs [s]
l2events	9295	Number of level 2 events



## 2 OBI

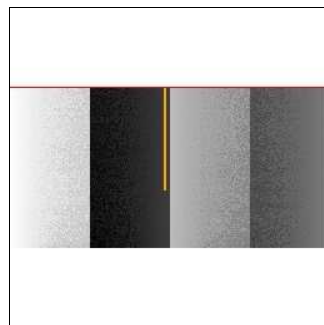
### 2.1 OBI

#### 2.1.1 Images



#### 2.1.2 Bias

Chip 7



### 2.1.3 Parameters

obi_num	0	Obi number	sched_exp_time	5000.000000	[s] Scheduled observation exposure time
ascdsver	8.4.3	Processing system revision	ontime	5069.4888023734	Sum of GTIs [s]
caldsver	4.4.8	&#160	ontime7	5069.4888023734	Sum of GTIs [s]
date	2012-02-19T22:56:30	Date and time of file creation	l1events	20117	Number of level 1 events
revision	1	Processing version of data			

### 2.1.4 Events

	<b>ccd 7</b>
level 1 events	20117
rejected events	10553
rejected %	52%

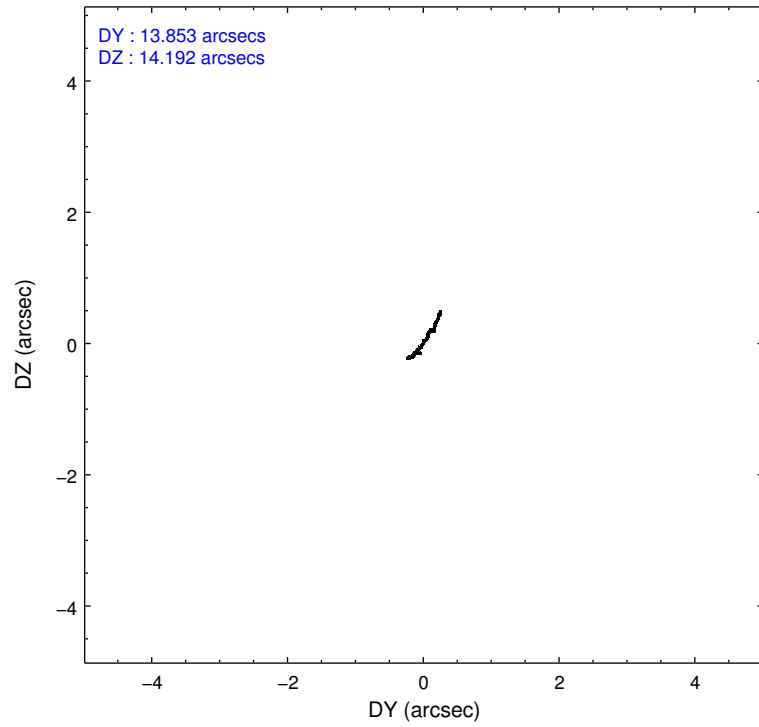
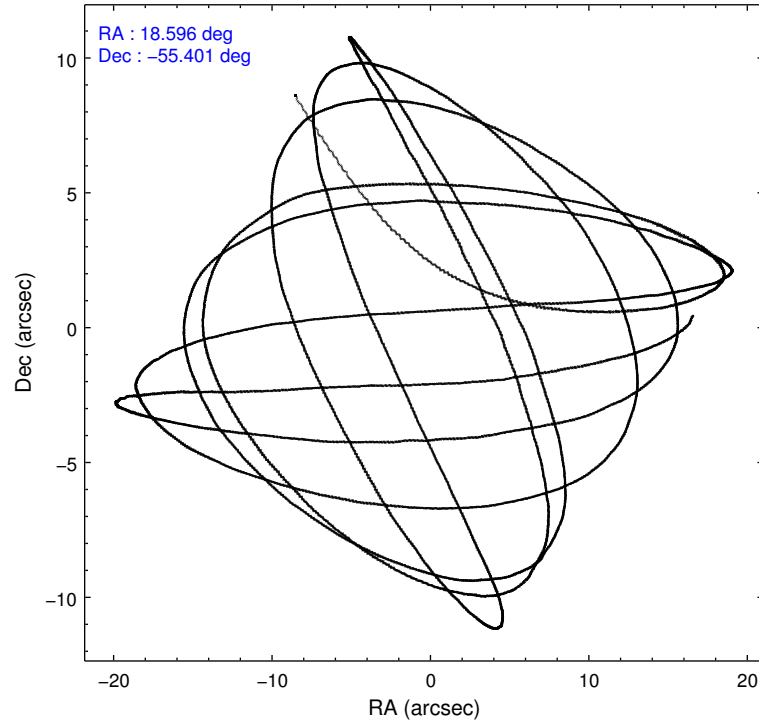
	<b>ccd 7</b>
grade 0 events	1047
	5%
grade 1 events	20
	0%
grade 2 events	2021
	10%
grade 3 events	1040
	5%
grade 4 events	960
	4%
grade 5 events	2197
	10%
grade 6 events	4498
	22%
grade 7 events	8334
	41%

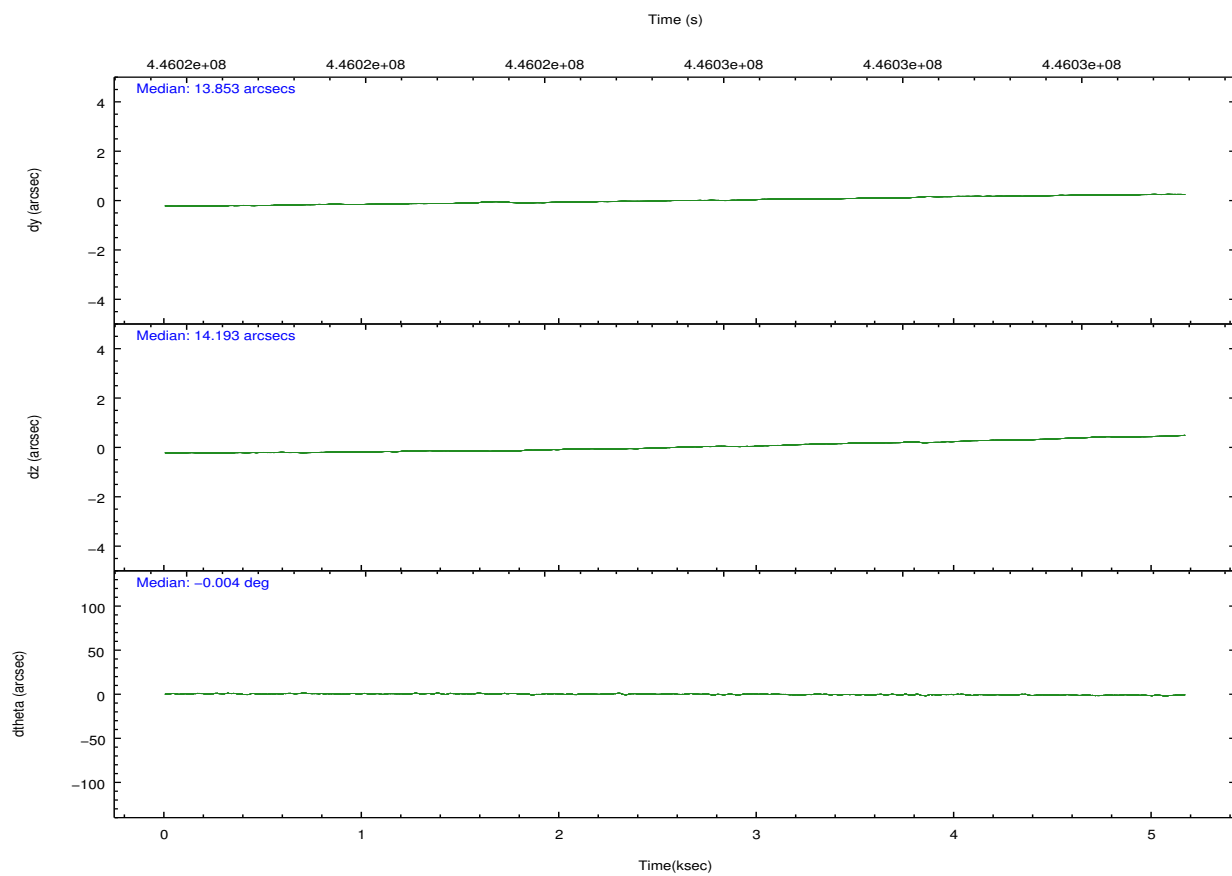
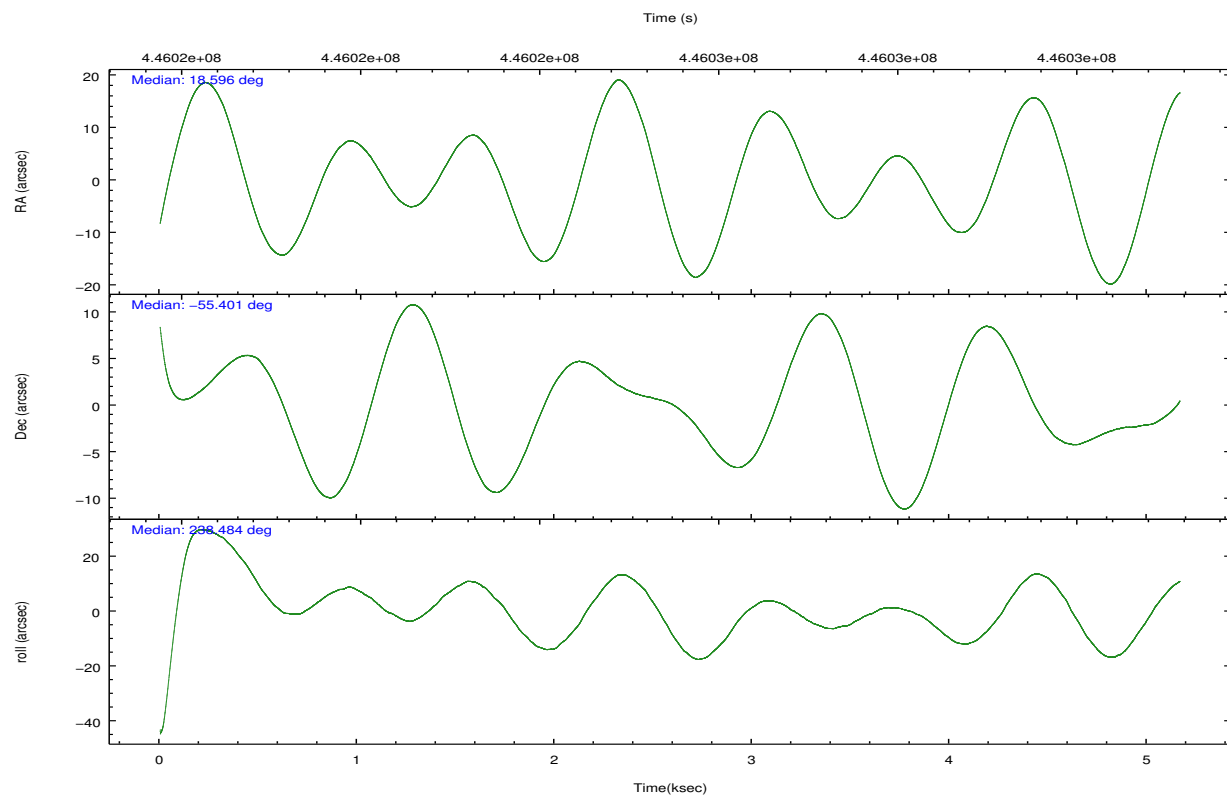


## 2.2 Compared Parameters

Parameter	Planned	Actual	Parameter	Planned	Actual
Instrument	ACIS	ACIS	Obspar format version number	7	7
Detector	ACIS-7	ACIS-7	Obspar file type	PREDICTED	ACTUAL
Grating	NONE	NONE	Obspar update status	NONE	UPDATED
Data mode	FAINT	FAINT	Number of optional ACIS chips dropped	0	0
Observation mode	POINTING	POINTING	On-chip summing requested	N	N
[deg] Pointing RA	18.596708	18.59617417218473	Subarray requested	CUSTOM	1/2
[deg] Pointing Dec	-55.374100	-55.40143380196235	Subarray start row	257	257
[deg] Pointing Roll	238.334564	238.4905942750241	Subarray row count	512	512
[mm] SIM focus pos	-0.684267	-0.6828225247311905	Alternating exposures requested	N	N
[mm] SIM defocus	0	0.001444936568705701	[s] Primary exposure time	0.000000	1.5
[mm] SIM translation stage pos	-190.132523	-190.1400660498719			
[mm] SIM translation stage offset	0	0.00754346686406393			
[s] Observation start time (MET)	446023307.184000	446022295.38363			
Observation start date	2012-02-19T07:20:41	2012-02-19T07:04:55			
[s] Observation end time (MET)	446028307.184000	446029340.7215			
Observation end date	2012-02-19T08:44:01	2012-02-19T09:02:20			
Read mode	TIMED	TIMED			

## 2.3 Aspect



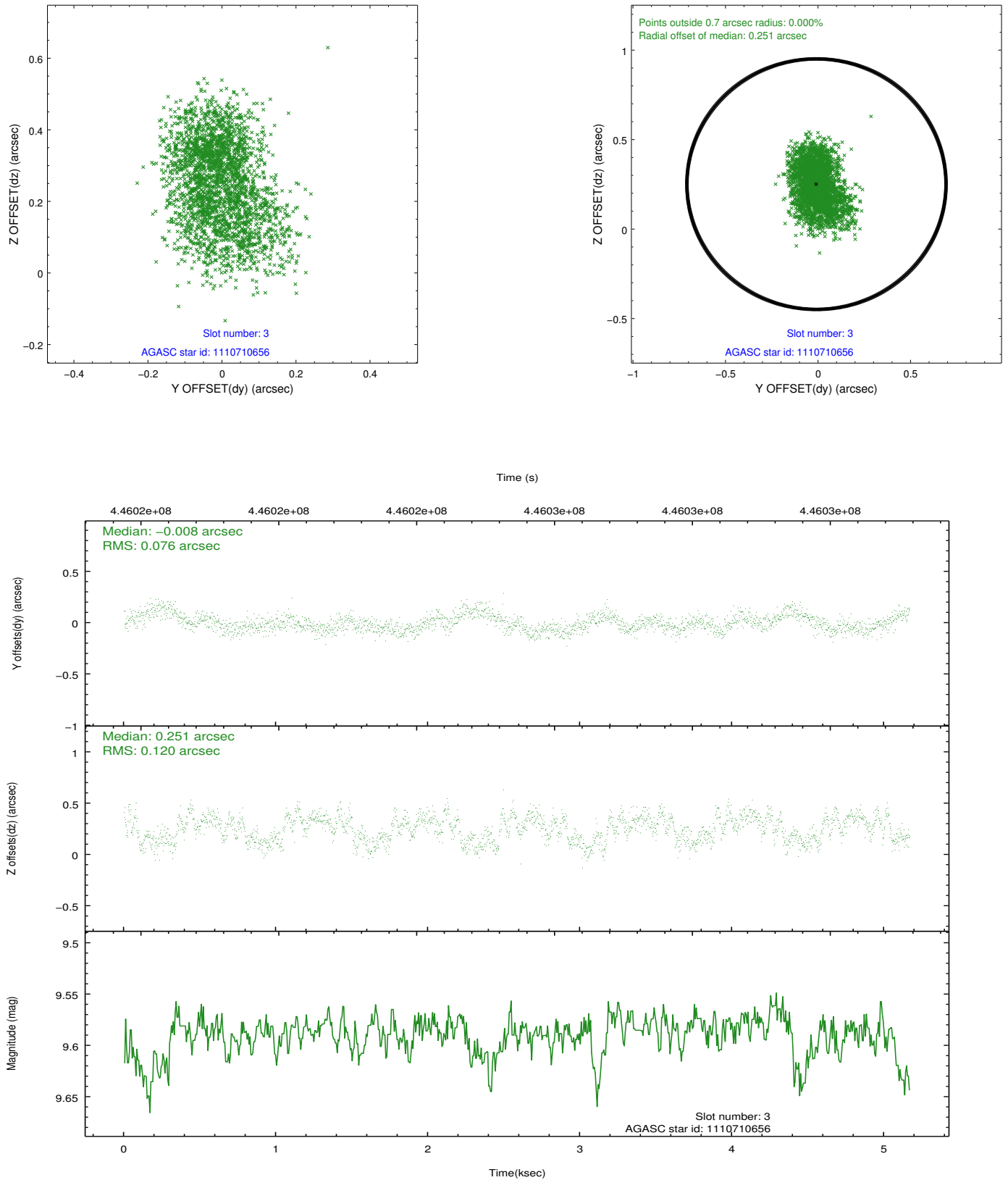


### Slot Statistics

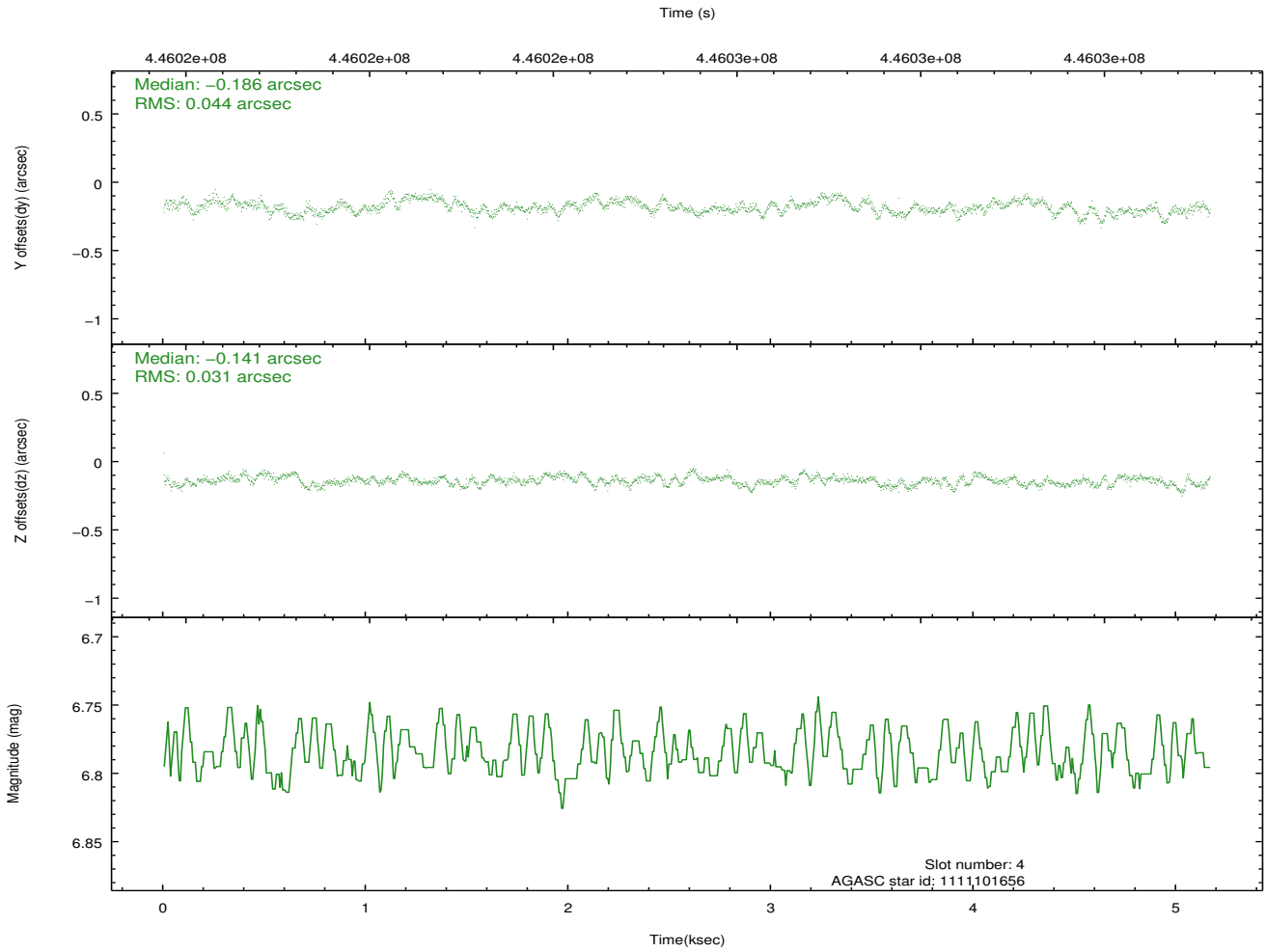
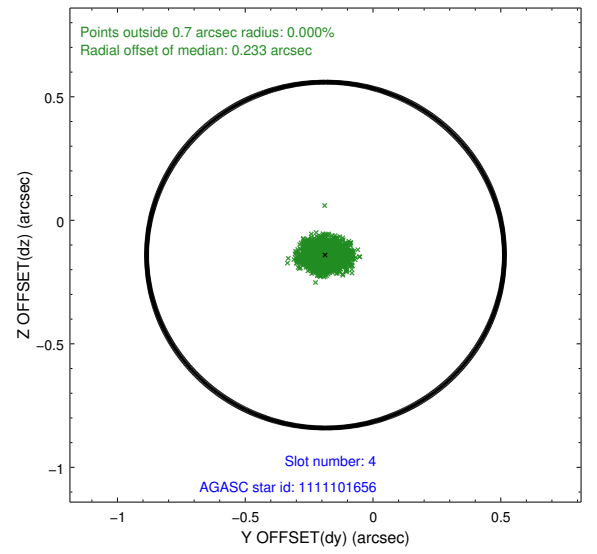
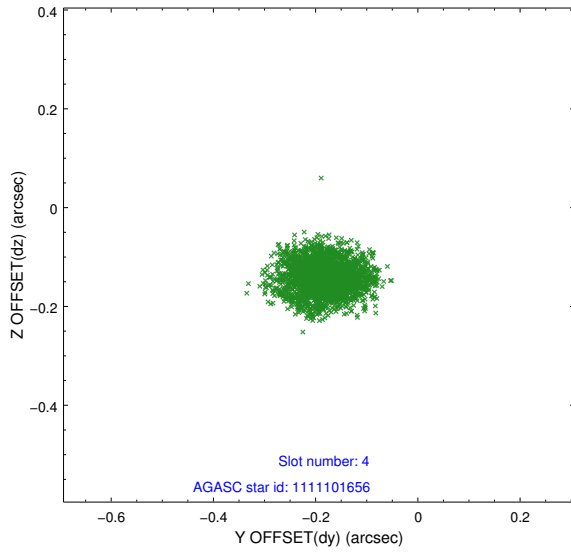
slot	status	id	mag	n_pts	med_dy	med_dz	dr1	dr2	ra	dec	mean_y	mean_z
0	FID	ACIS-S-2	6.87	1259	-0.070	-0.031	0.015	0.028	0.000000	0.000000	-766.87	-1735.62
1	FID	ACIS-S-4	6.96	1260	0.226	0.042	0.008	0.016	0.000000	0.000000	2146.17	171.71
2	FID	ACIS-S-5	6.99	1259	-0.188	-0.001	0.015	0.030	0.000000	0.000000	-1818.32	166.68
3	GUIDE	1110710656	9.59	2517	-0.008	0.251	0.153	0.239	17.824561	-54.977401	-369.82	-2102.56
4	GUIDE	1111101656	6.79	2521	-0.186	-0.141	0.058	0.092	18.751947	-55.632609	626.85	756.42
5	GUIDE	1111102976	9.18	2520	0.142	0.109	0.139	0.211	18.474979	-55.242156	-272.29	-461.31
6	GUIDE	1111105360	8.16	2521	0.118	-0.116	0.069	0.112	18.732117	-55.373468	-146.48	234.70
7	GUIDE	1111105912	8.67	2517	-0.064	-0.095	0.063	0.105	18.878639	-55.577980	324.83	874.58

## 2.4 Star Slots

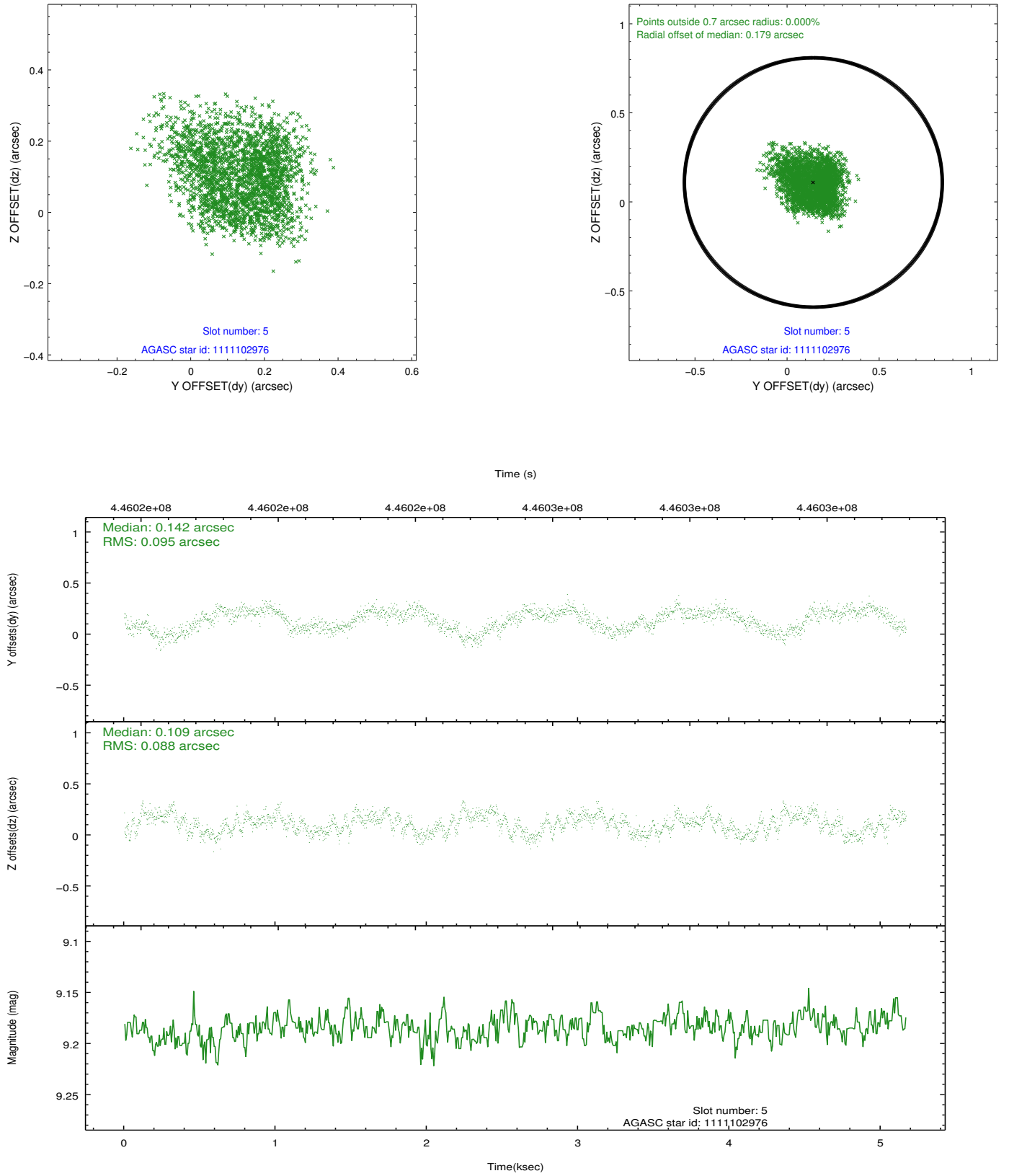
### 2.4.1 Slot 3



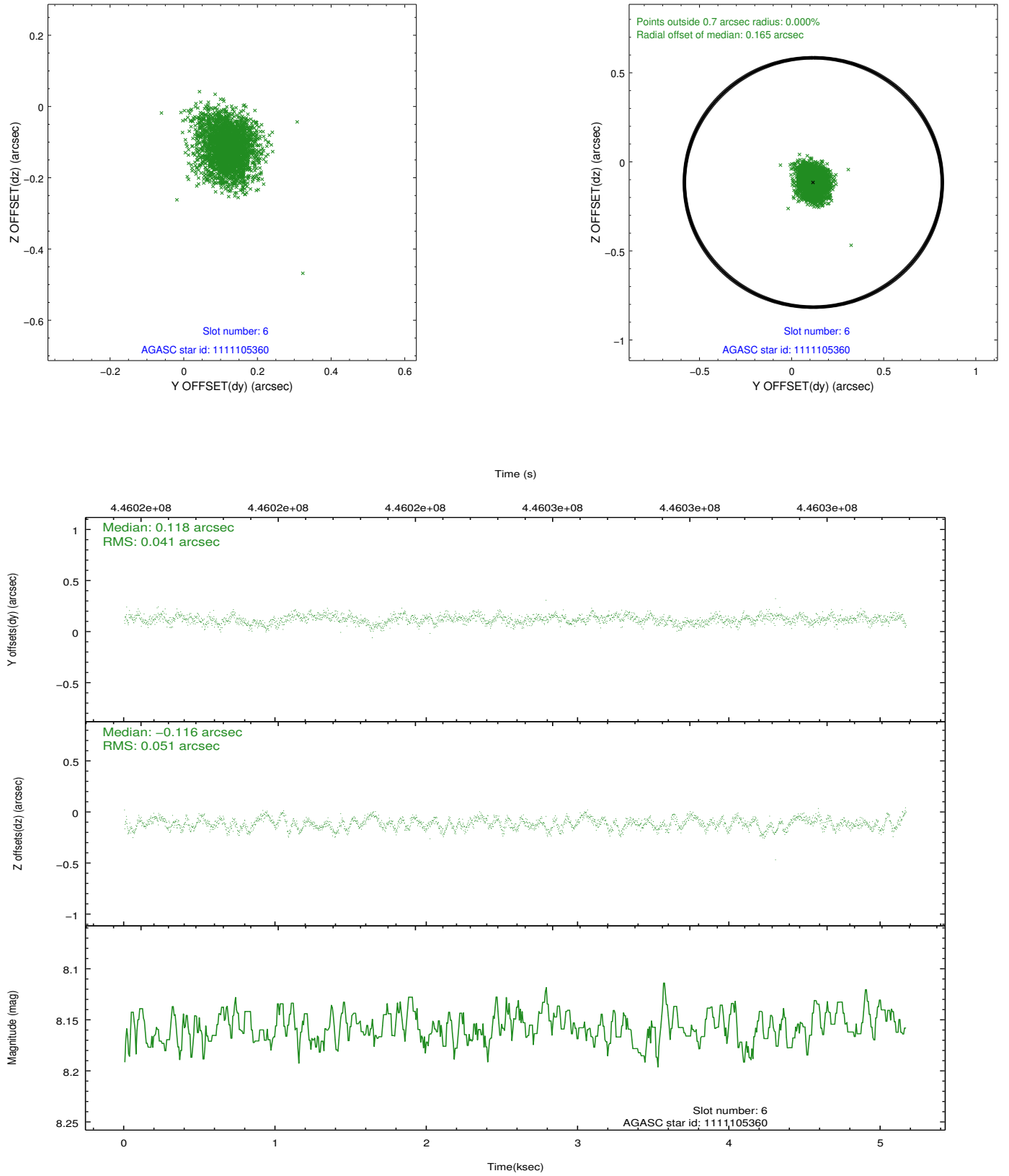
## 2.4.2 Slot 4



### 2.4.3 Slot 5

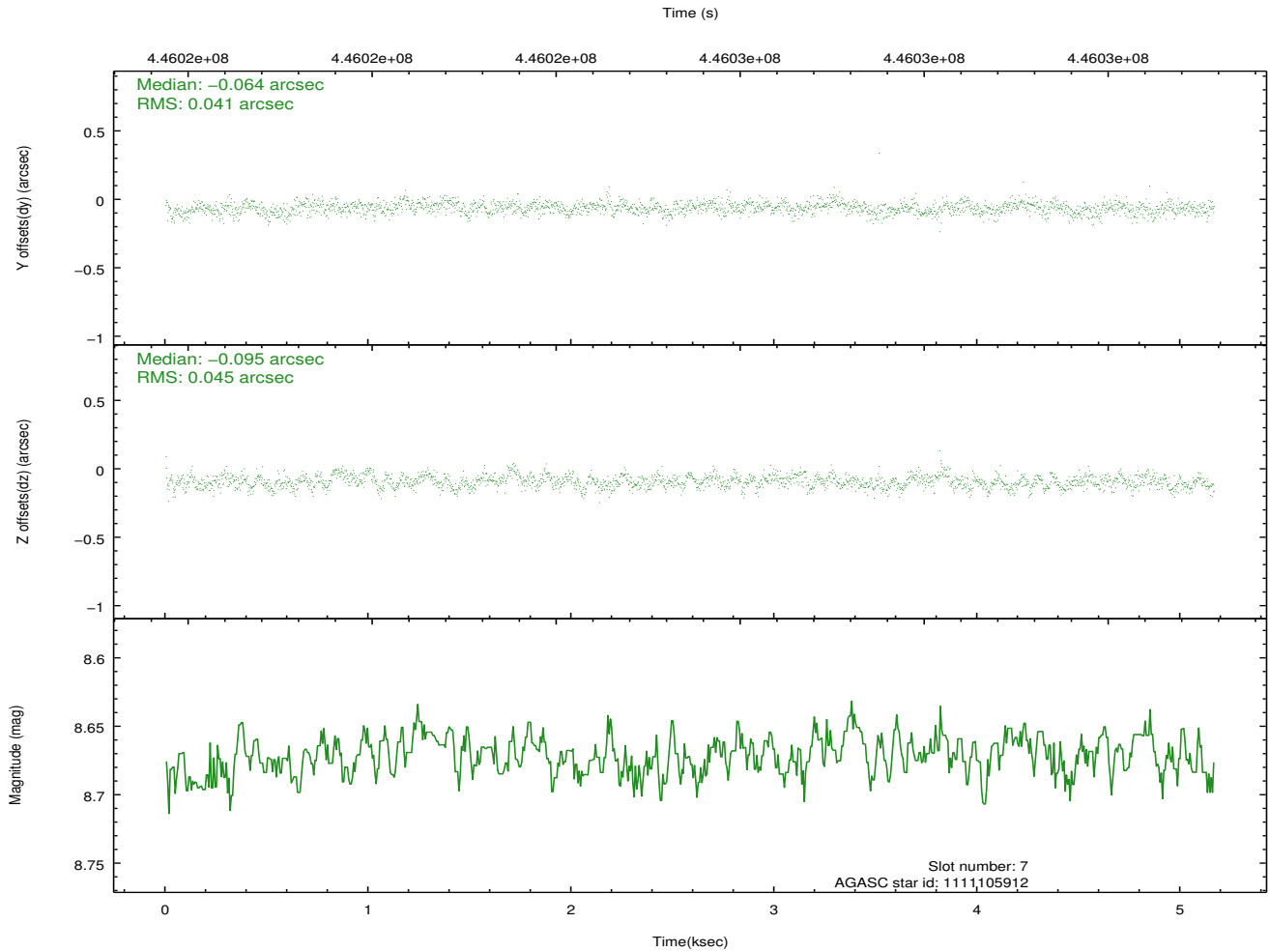
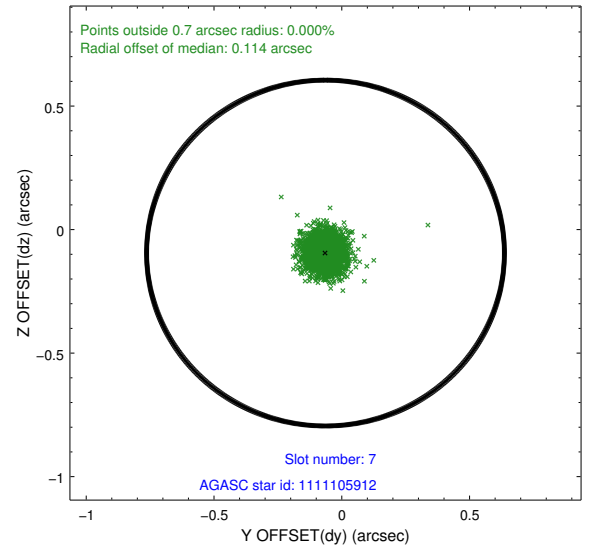
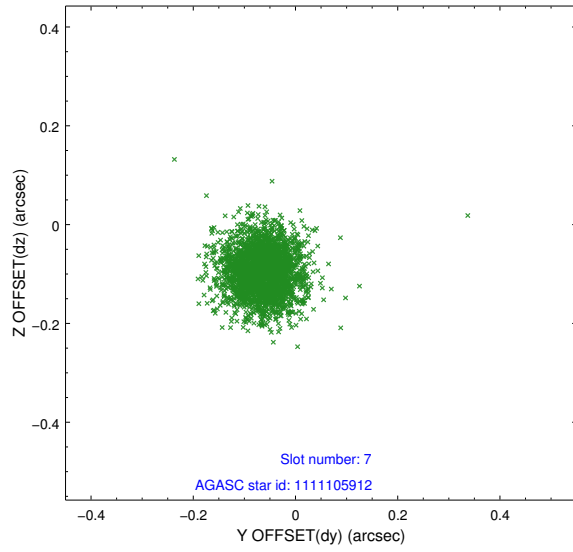


## 2.4.4 Slot 6



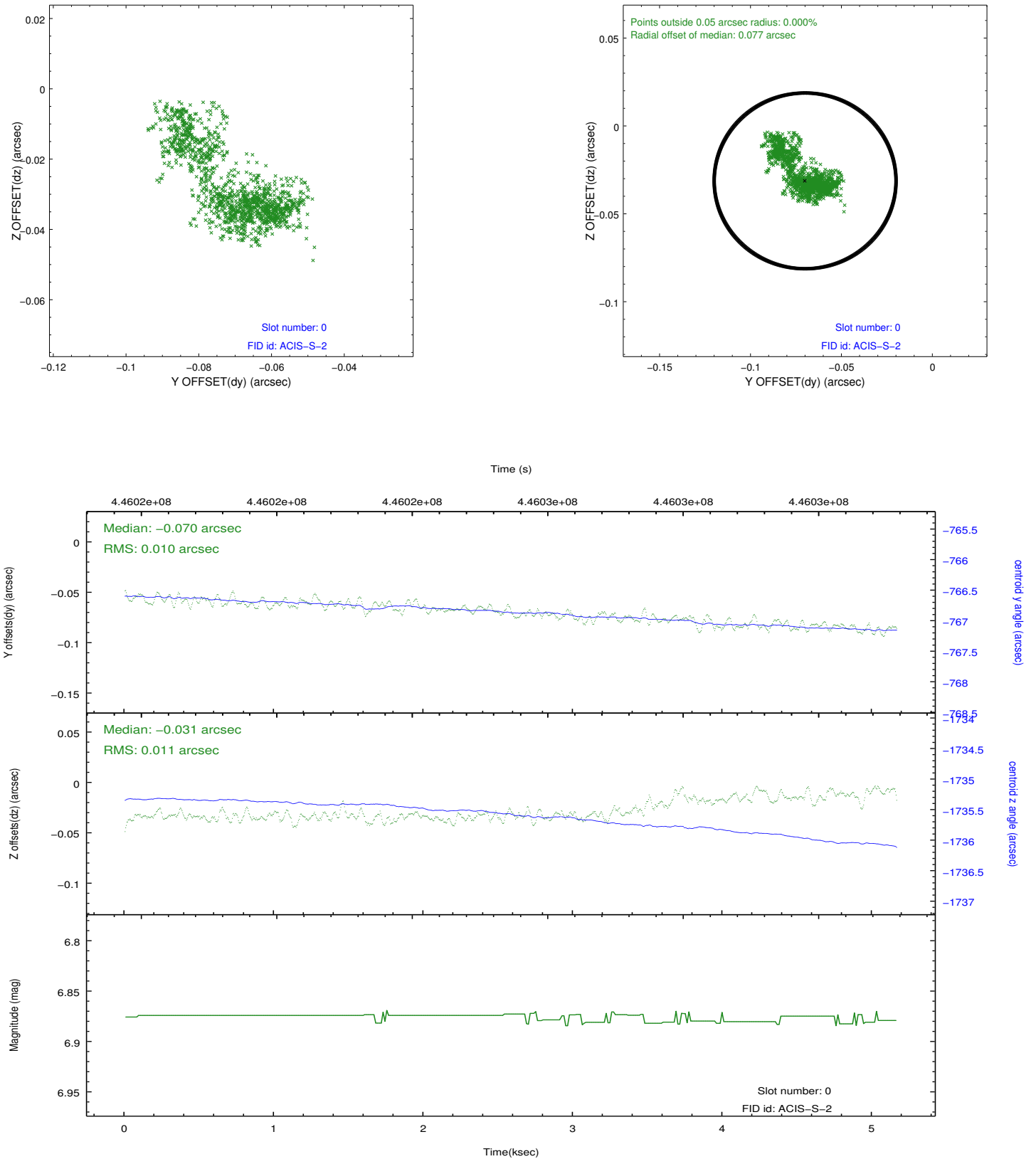


## 2.4.5 Slot 7

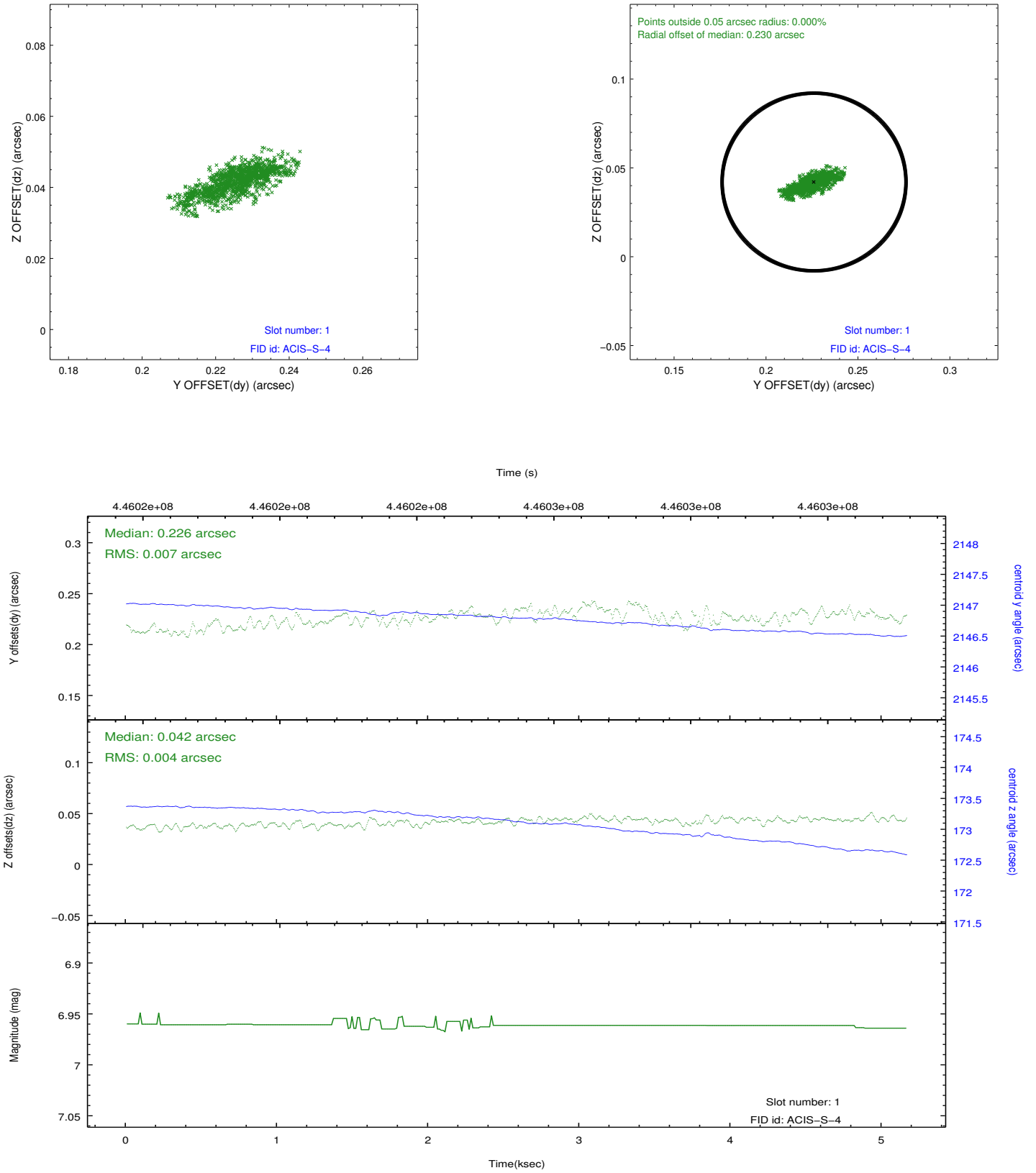


## 2.5 FID Slots

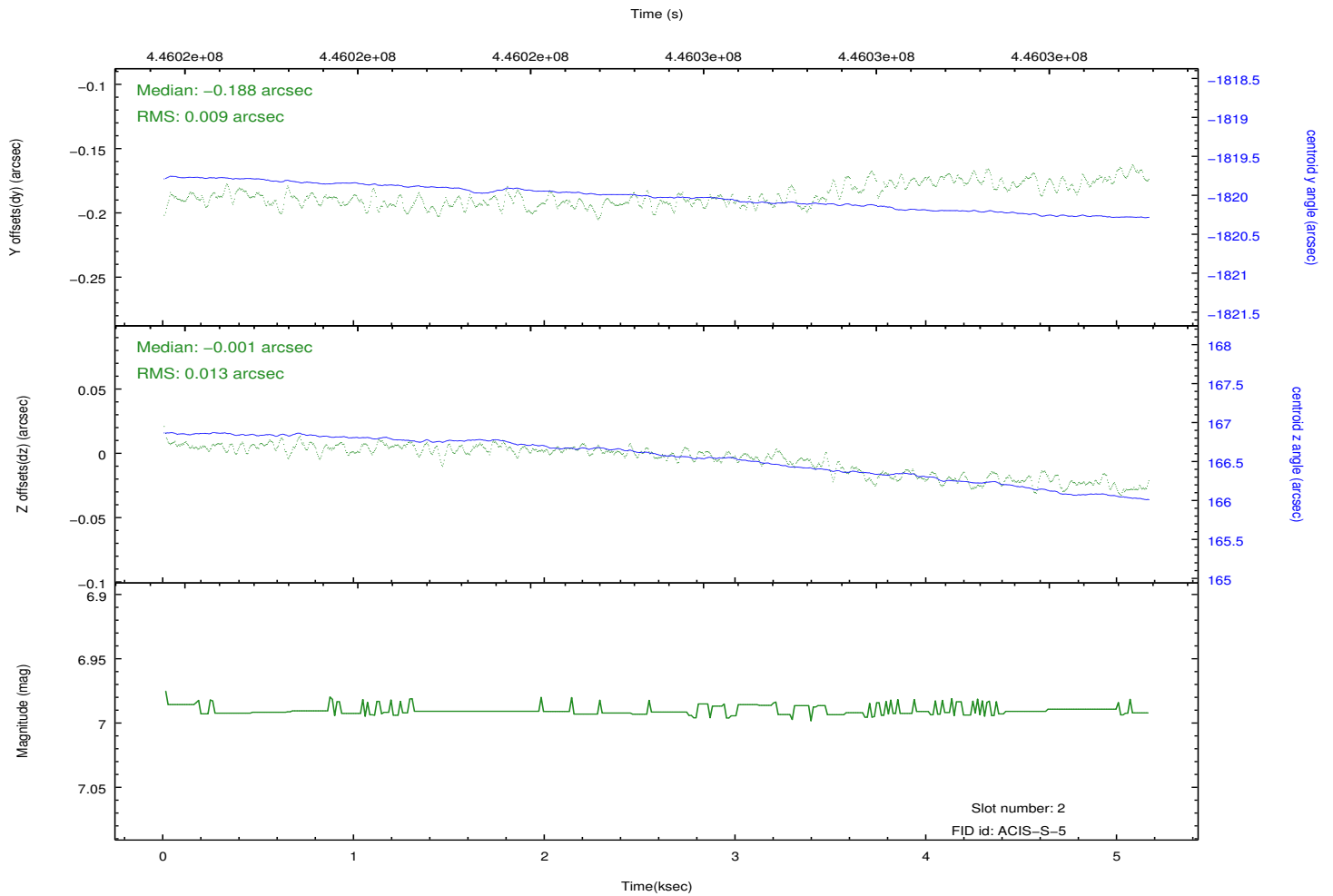
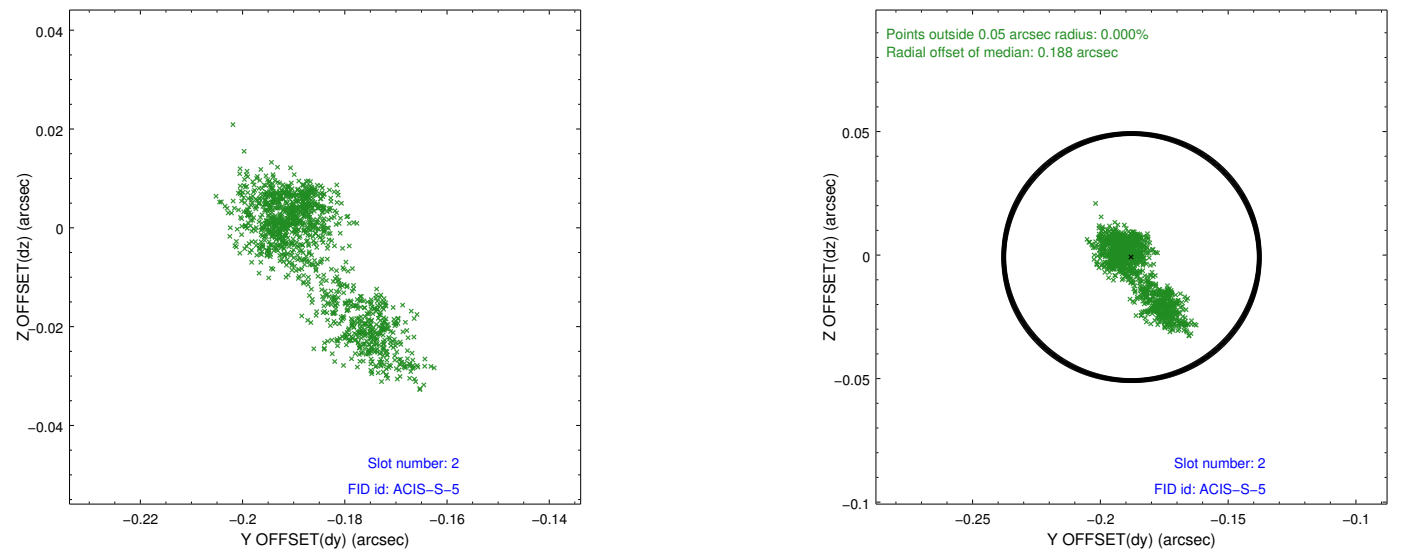
### 2.5.1 Slot 0



## 2.5.2 Slot 1



### 2.5.3 Slot 2



## A Summary

### A.1 Status

V&V Scientist	Jen Lauer
V&V Date (YYYY-MM-DD)	2012.02.21
V&V Edition	1
V&V Disposition and Status	OK
V&V Charge Time	5.0694888023734

### A.2 Comments