

V&V Reference Report

L2 ASCDS Version : 8.4.3

Observation 13681 - L2 Version 1
Chandra X-Ray Center

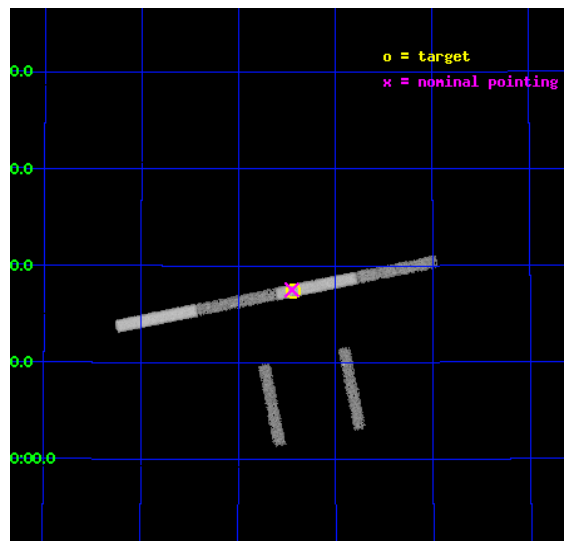
L2 Processing Date : Jan 30 2012

Contents

1	Front	2
2	OBI	3
2.1	OBI	3
2.1.1	Images	3
2.1.2	Bias	3
2.1.3	Parameters	4
2.1.4	Events	4
2.2	Compared Parameters	5
2.3	Aspect	6
2.4	Star Slots	9
2.4.1	Slot 3	9
2.4.2	Slot 4	10
2.4.3	Slot 5	11
2.4.4	Slot 6	12
2.4.5	Slot 7	13
2.5	FID Slots	14
2.5.1	Slot 0	14
2.5.2	Slot 1	15
2.5.3	Slot 2	16
A	Summary	17
A.1	Status	17
A.2	Comments	17

1 Front

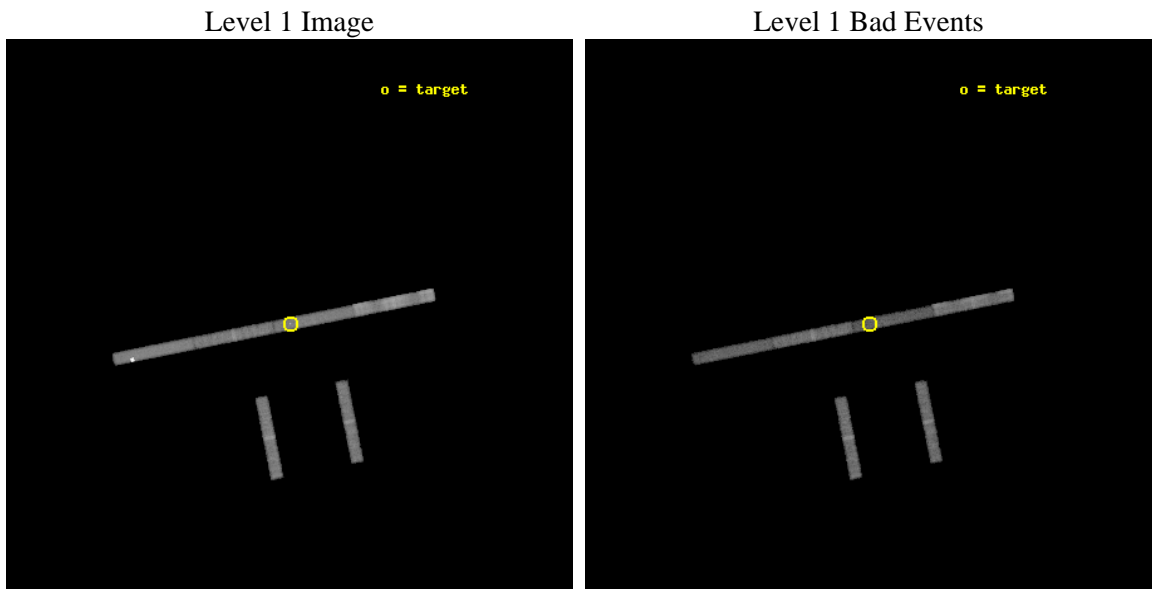
seq_num	401367	Sequence number
obs_id	13681	Observation id
title	A Further Drop into Quiescence by the Neutron Star and Possible Hierarchical Triple 4U2129+47	Proposal title
observer	Dr. Michael Nowak	Principal investigator
object	4U 2129+47	Source name
dtcycle	0	
cycle	P	events from which exps? Prim/Second/Both
ra_targ	322.859167	Observer's specified target RA [deg]
dec_targ	47.29	Observer's specified target Dec [deg]
ra_nom	322.86228787181	Nominal RA [deg]
dec_nom	47.292171517074	Nominal Dec [deg]
roll_nom	348.68032780766	Nominal Roll [deg]
revision	1	Processing version of data
ontime	22053.998686314	Sum of GTIs [s]
livetime	20832.612383164	Livetime [s]
ontime2	22054.039726317	Sum of GTIs [s]
ontime3	22053.875566304	Sum of GTIs [s]
ontime5	22053.95764631	Sum of GTIs [s]
ontime6	22052.434526324	Sum of GTIs [s]
ontime7	22053.998686314	Sum of GTIs [s]
ontime8	22051.611406267	Sum of GTIs [s]
l2events	39850	Number of level 2 events



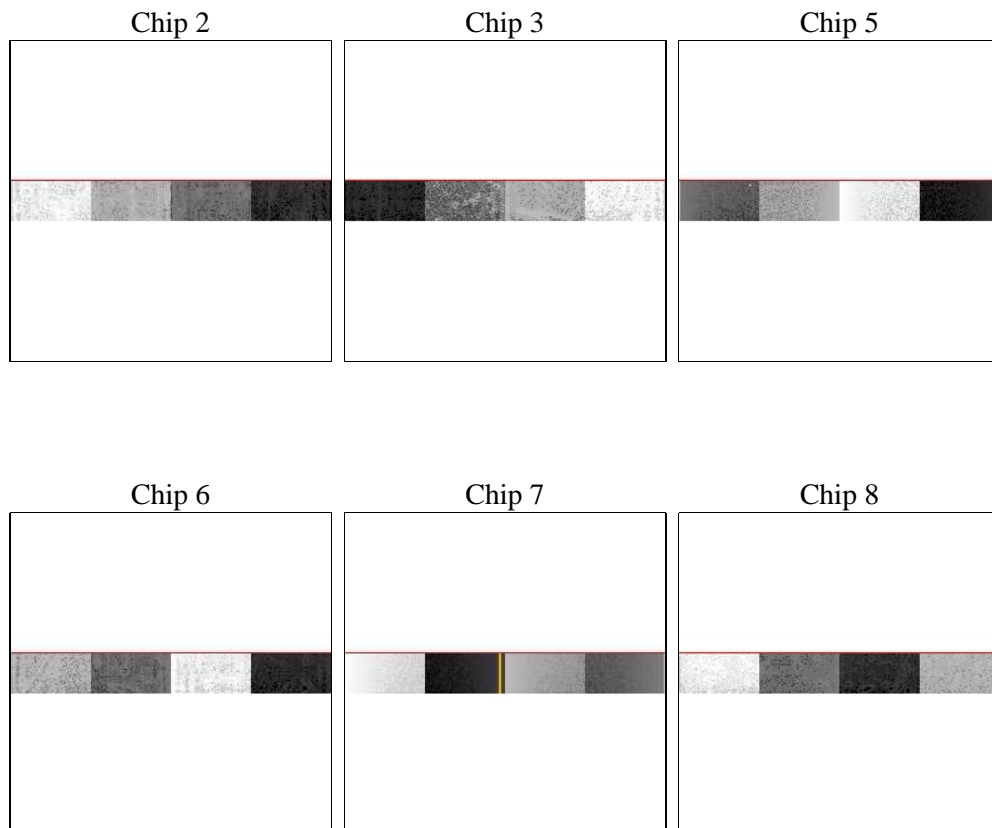
2 OBI

2.1 OBI

2.1.1 Images



2.1.2 Bias



2.1.3 Parameters

obi_num	2	Obi number	sched_exp_time	22000.000000	[s] Scheduled observation exposure time
ascdsver	8.4.3	Processing system revision	ontime	22053.998686314	Sum of GTIs [s]
caldsver	4.4.7	 	ontime2	22054.039726317	Sum of GTIs [s]
date	2012-01-30T19:08:34	Date and time of file creation	ontime3	22053.875566304	Sum of GTIs [s]
revision	1	Processing version of data	ontime5	22053.95764631	Sum of GTIs [s]
			ontime6	22052.434526324	Sum of GTIs [s]
			ontime7	22053.998686314	Sum of GTIs [s]
			ontime8	22051.611406267	Sum of GTIs [s]
			l1events	219939	Number of level 1 events

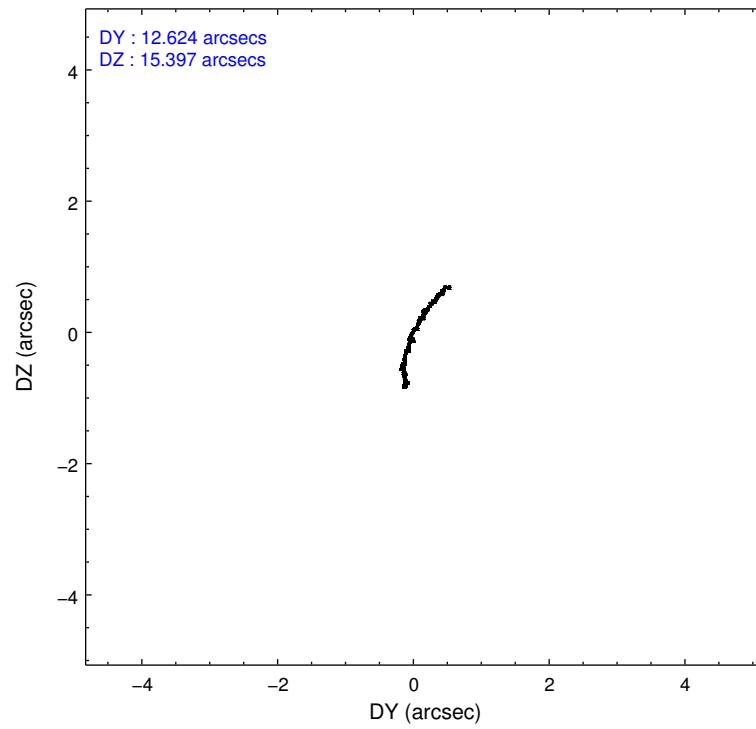
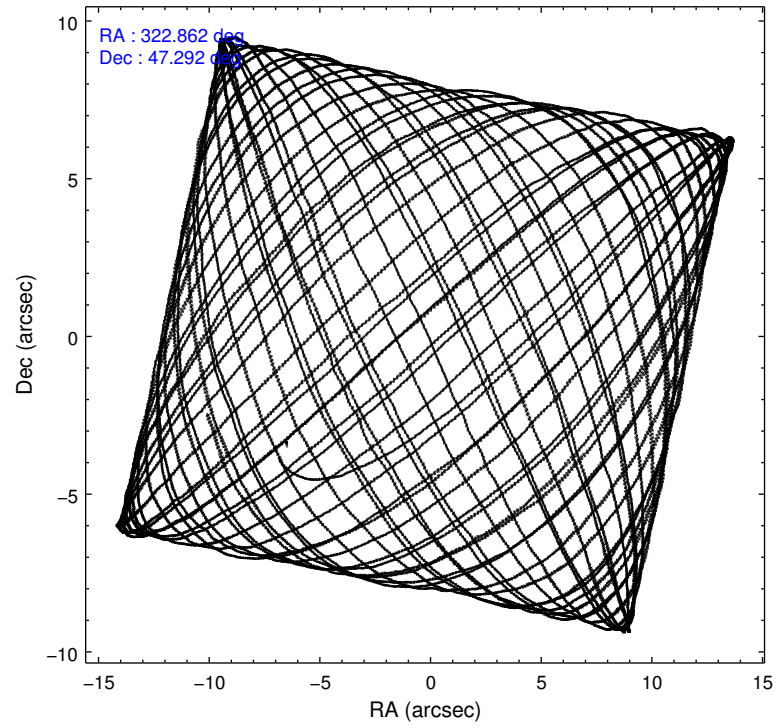
2.1.4 Events

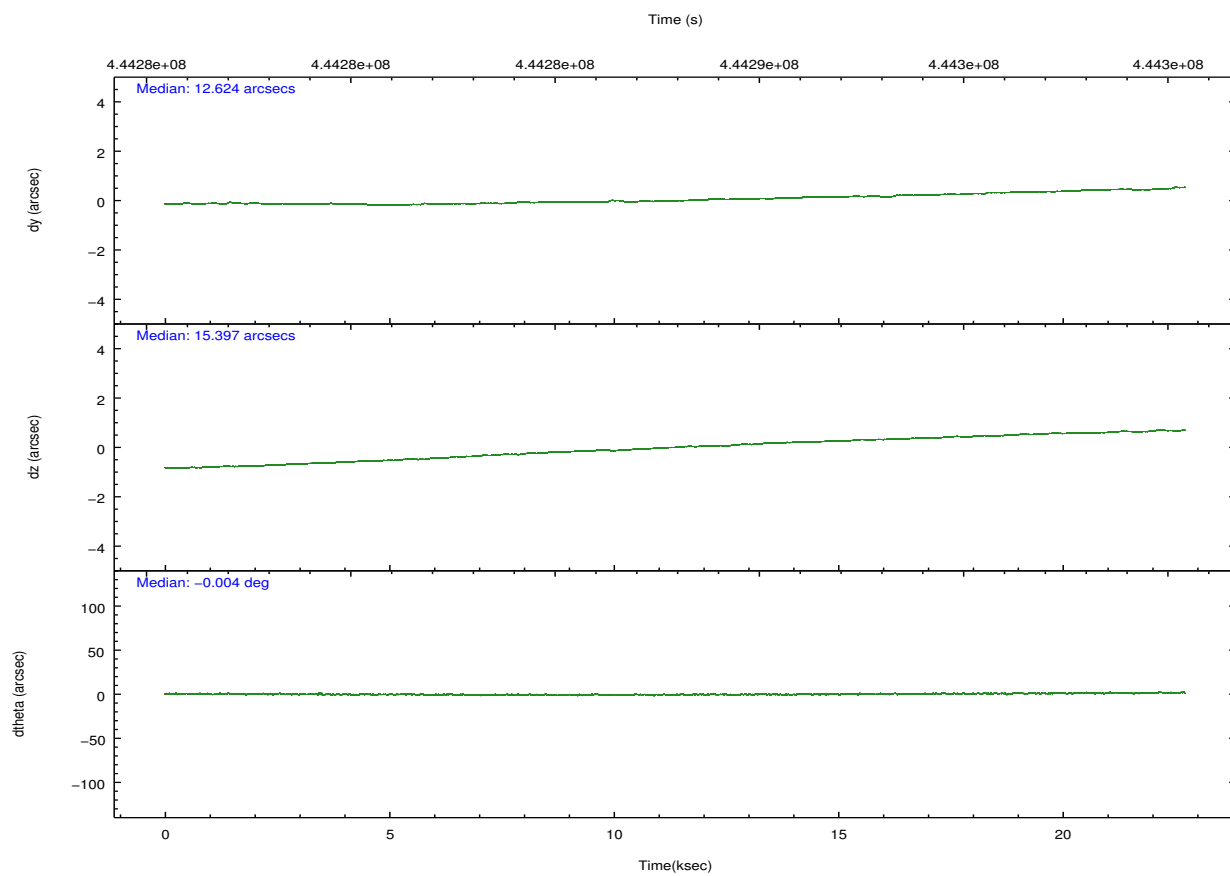
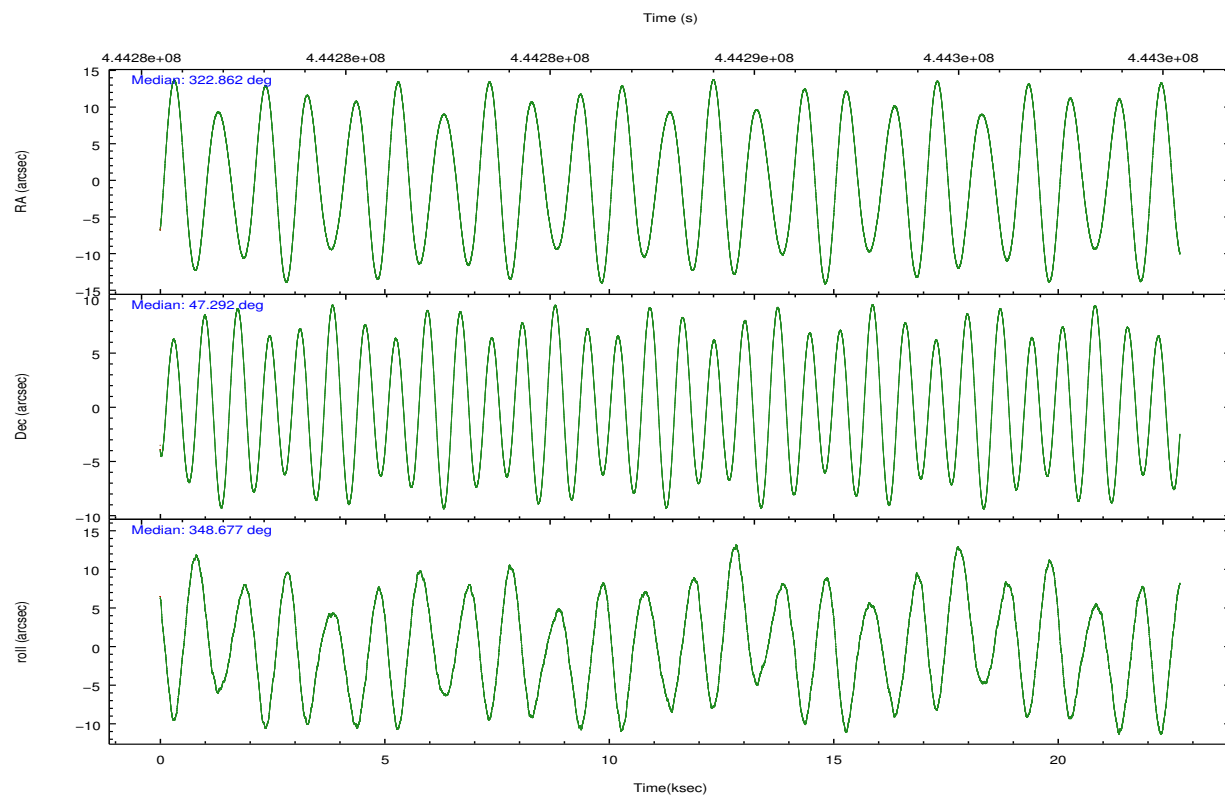
	ccd 2	ccd 3	ccd 5	ccd 6	ccd 7	ccd 8		ccd 2	ccd 3	ccd 5	ccd 6	ccd 7	ccd 8
level 1 events	27745	24230	60271	27063	26936	53694	grade 0 events	1262	957	26646	1213	1643	5761
rejected events	24153	21429	15206	23532	13292	31739		4%	3%	44%	4%	6%	10%
rejected %	87%	88%	25%	86%	49%	59%	grade 1 events	7	8	106	4	32	24
								0%	0%	0%	0%	0%	0%
							grade 2 events	868	566	8378	697	3143	3862
								3%	2%	13%	2%	11%	7%
							grade 3 events	438	447	1213	549	1548	3158
								1%	1%	2%	2%	5%	5%
							grade 4 events	477	390	1236	471	1392	2761
								1%	1%	2%	1%	5%	5%
							grade 5 events	859	870	2765	871	2586	1469
								3%	3%	4%	3%	9%	2%
							grade 6 events	548	441	7598	601	5920	6417
								1%	1%	12%	2%	21%	11%
							grade 7 events	23286	20551	12329	22657	10672	30242
								83%	84%	20%	83%	39%	56%

2.2 Compared Parameters

Parameter	Planned	Actual	Parameter	Planned	Actual
Instrument	ACIS	ACIS	Obspar format version number	7	7
Detector	ACIS-235678	ACIS-235678	Obspar file type	PREDICTED	ACTUAL
Grating	NONE	NONE	Obspar update status	NONE	UPDATED
Data mode	FAINT	FAINT	CCD I0 on	N	N
Observation mode	POINTING	POINTING	CCD I1 on	N	N
[deg] Pointing RA	322.824263	322.8622878718129	CCD I2 on	O1	Y
[deg] Pointing Dec	47.283065	47.29217151707392	CCD I3 on	O2	Y
[deg] Pointing Roll	348.551640	348.6803278076621	CCD S0 on	N	N
[mm] SIM focus pos	-0.684267	-0.6828225247311905	CCD S1 on	O4	Y
[mm] SIM defocus	0	0.001444936568705701	CCD S2 on	O5	Y
[mm] SIM translation stage pos	-190.132523	-190.1400660498719	CCD S3 on	Y	Y
[mm] SIM translation stage offset	0	0.00754346686406393	CCD S4 on	O3	Y
[s] Observation start time (MET)	444277288.184000	444276290.30367	CCD S5 on	N	N
Observation start date	2012-01-30T02:20:22	2012-01-30T02:04:50	Number of optional ACIS chips dropped	0	0
[s] Observation end time (MET)	444299288.184000	444300586.90496	On-chip summing requested	N	N
Observation end date	2012-01-30T08:27:02	2012-01-30T08:49:46	Subarray requested	CUSTOM	1/8
Read mode	TIMED	TIMED	Subarray start row	449	449
			Subarray row count	128	128
			Alternating exposures requested	N	N
			[s] Primary exposure time	0.000000	0.7

2.3 Aspect



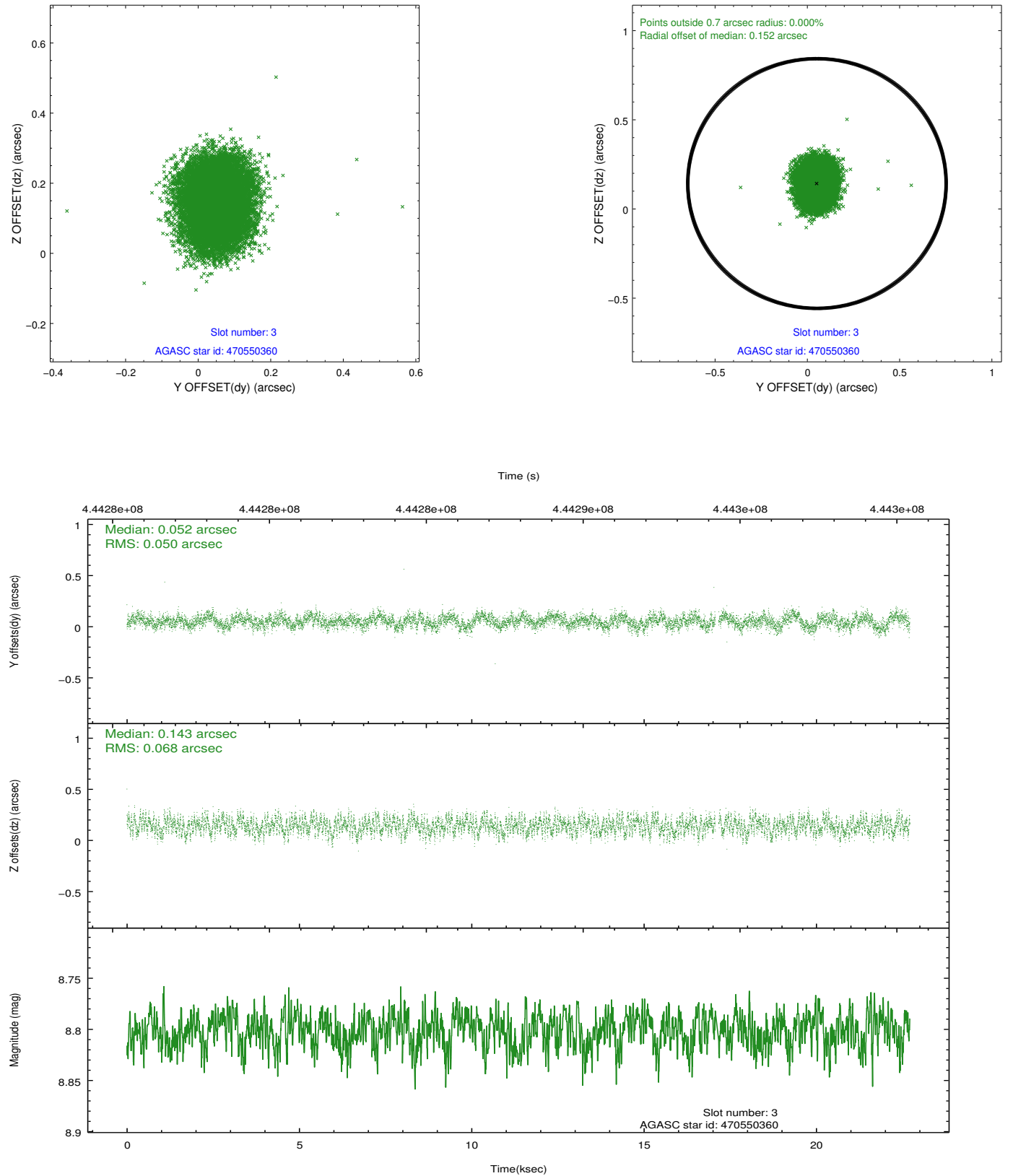


Slot Statistics

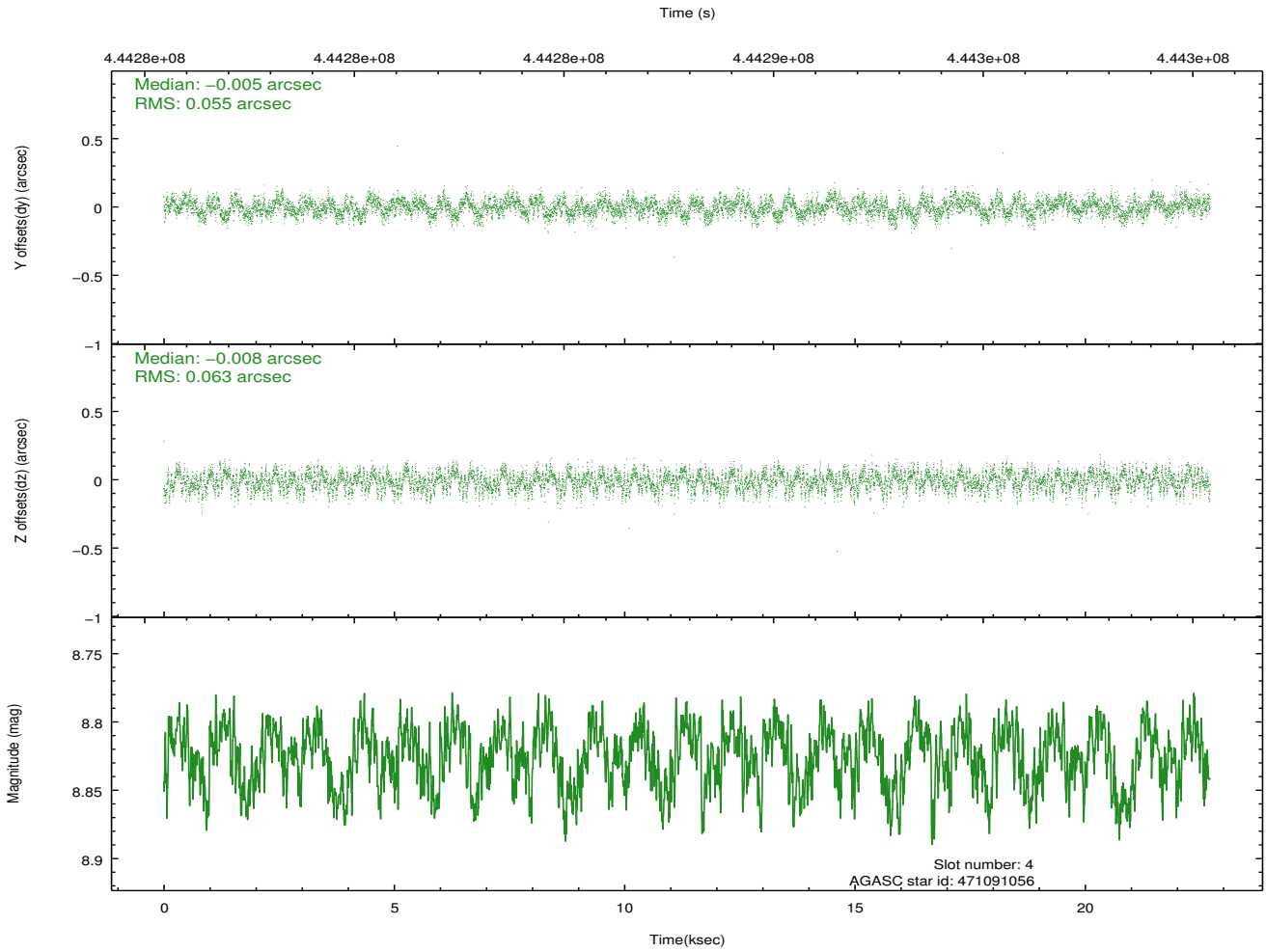
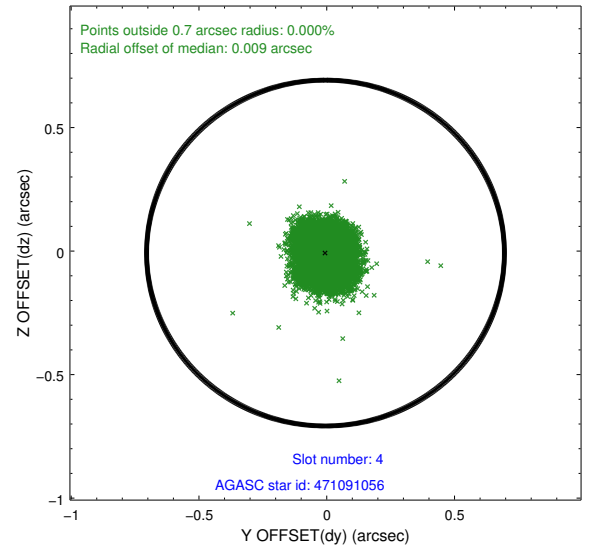
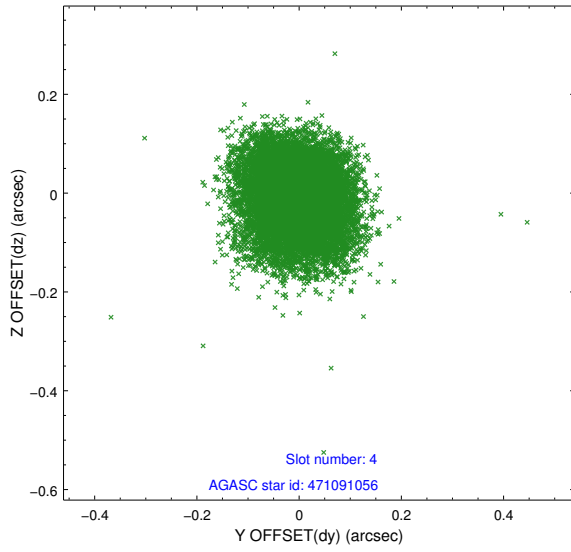
slot	status	id	mag	n_pts	med_dy	med_dz	dr1	dr2	ra	dec	mean_y	mean_z
0	FID	ACIS-S-2	6.85	5541	-0.054	0.007	0.009	0.015	0.000000	0.000000	-765.64	-1736.75
1	FID	ACIS-S-4	6.94	5541	0.177	0.024	0.007	0.012	0.000000	0.000000	2147.79	171.61
2	FID	ACIS-S-5	6.97	5541	-0.153	-0.023	0.010	0.017	0.000000	0.000000	-1818.41	165.38
3	GUIDE	470550360	8.80	11029	0.052	0.143	0.091	0.141	321.858591	46.751413	-1957.29	-2334.03
4	GUIDE	471091056	8.82	11064	-0.005	-0.008	0.089	0.141	323.297085	47.790378	757.43	2020.35
5	GUIDE	471092352	8.97	11076	0.097	-0.162	0.084	0.137	322.351083	47.923284	-1576.94	2035.87
6	GUIDE	471222144	8.96	11055	-0.210	-0.081	0.082	0.137	323.817294	47.572573	2153.52	1515.67
7	GUIDE	470556752	9.26	11034	0.071	0.117	0.114	0.178	321.875950	46.734333	-1903.44	-2386.19

2.4 Star Slots

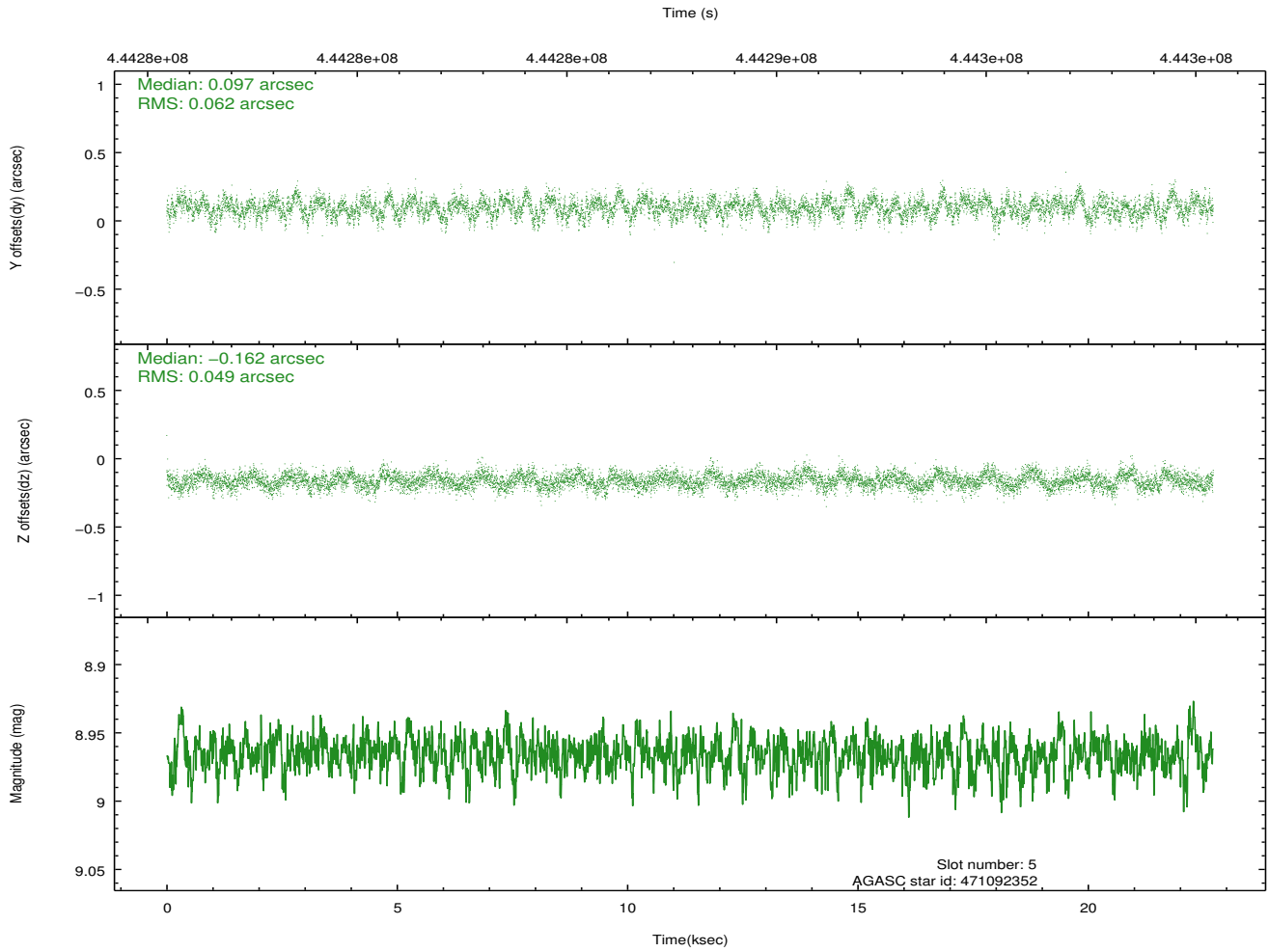
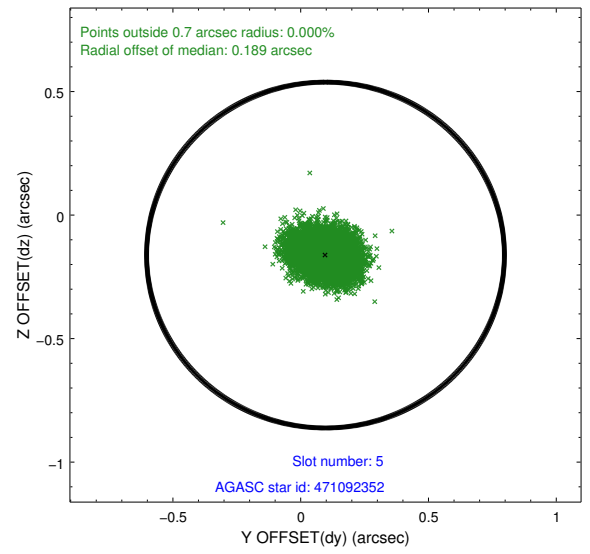
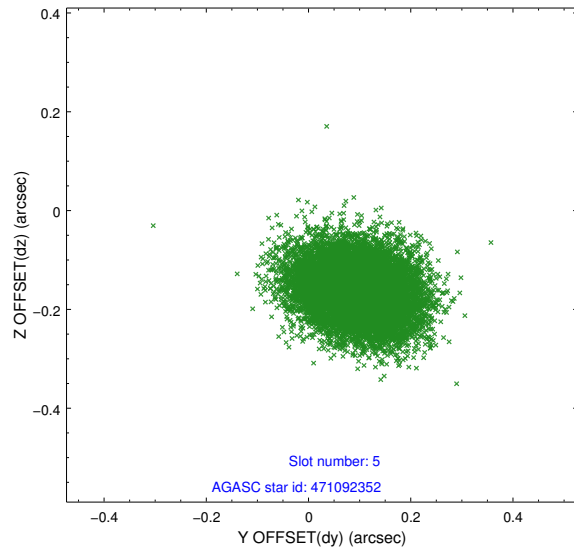
2.4.1 Slot 3



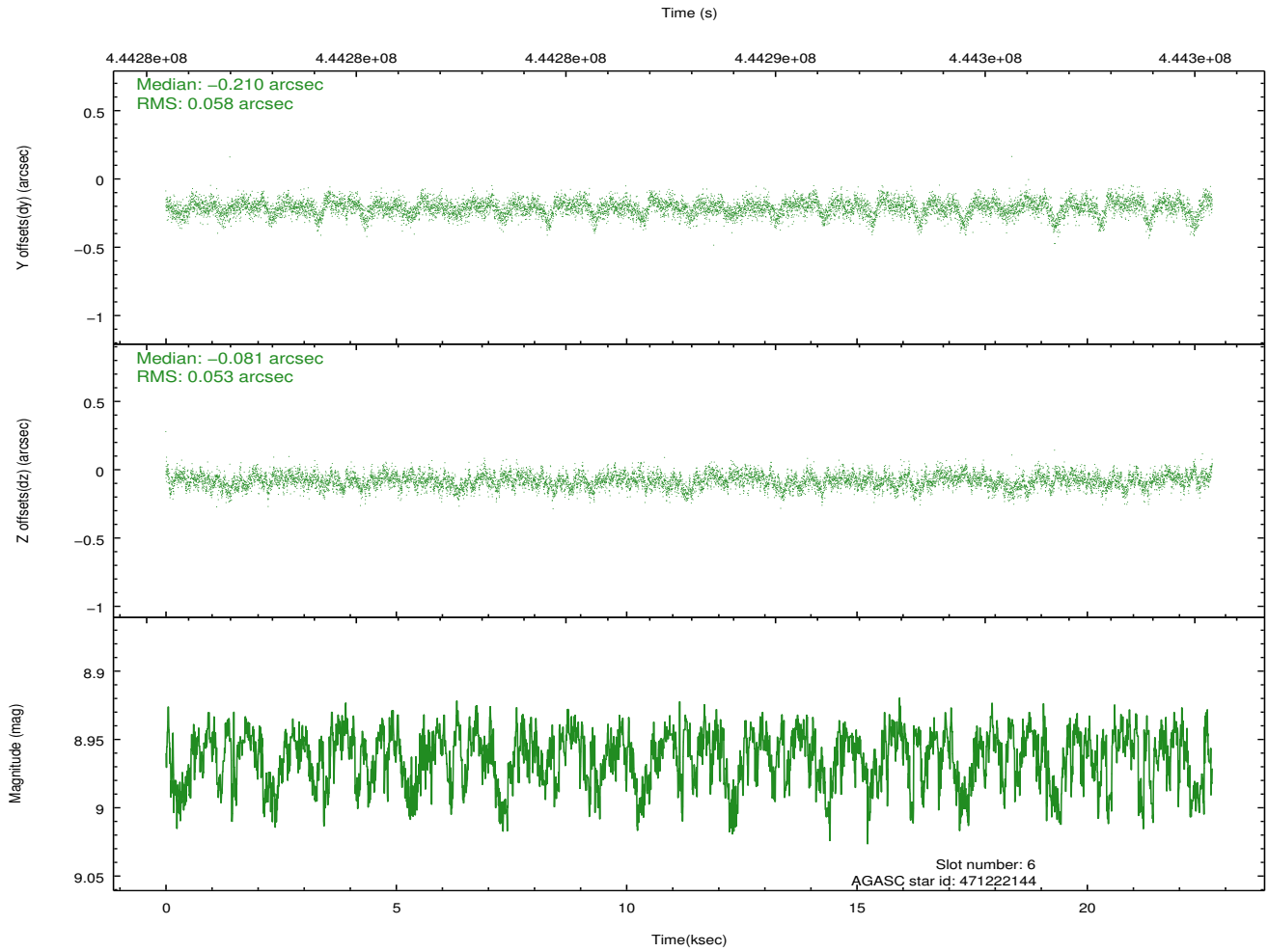
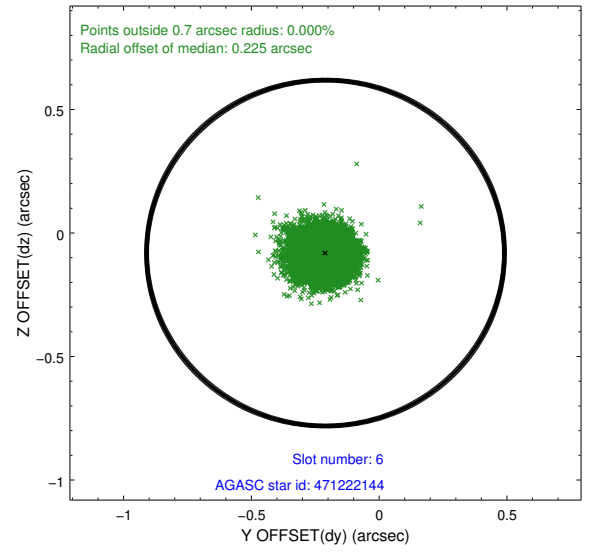
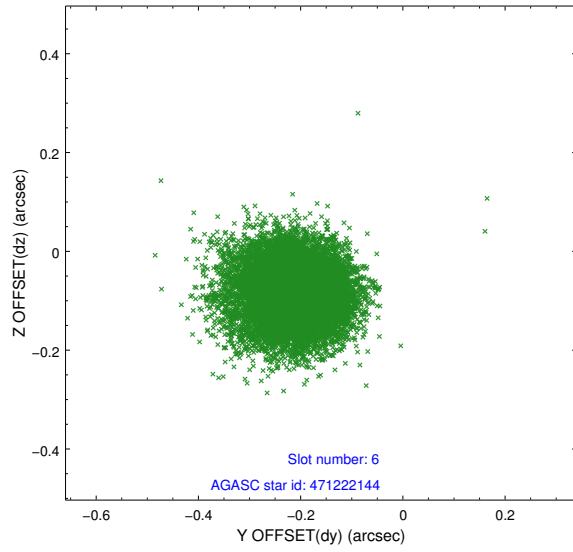
2.4.2 Slot 4



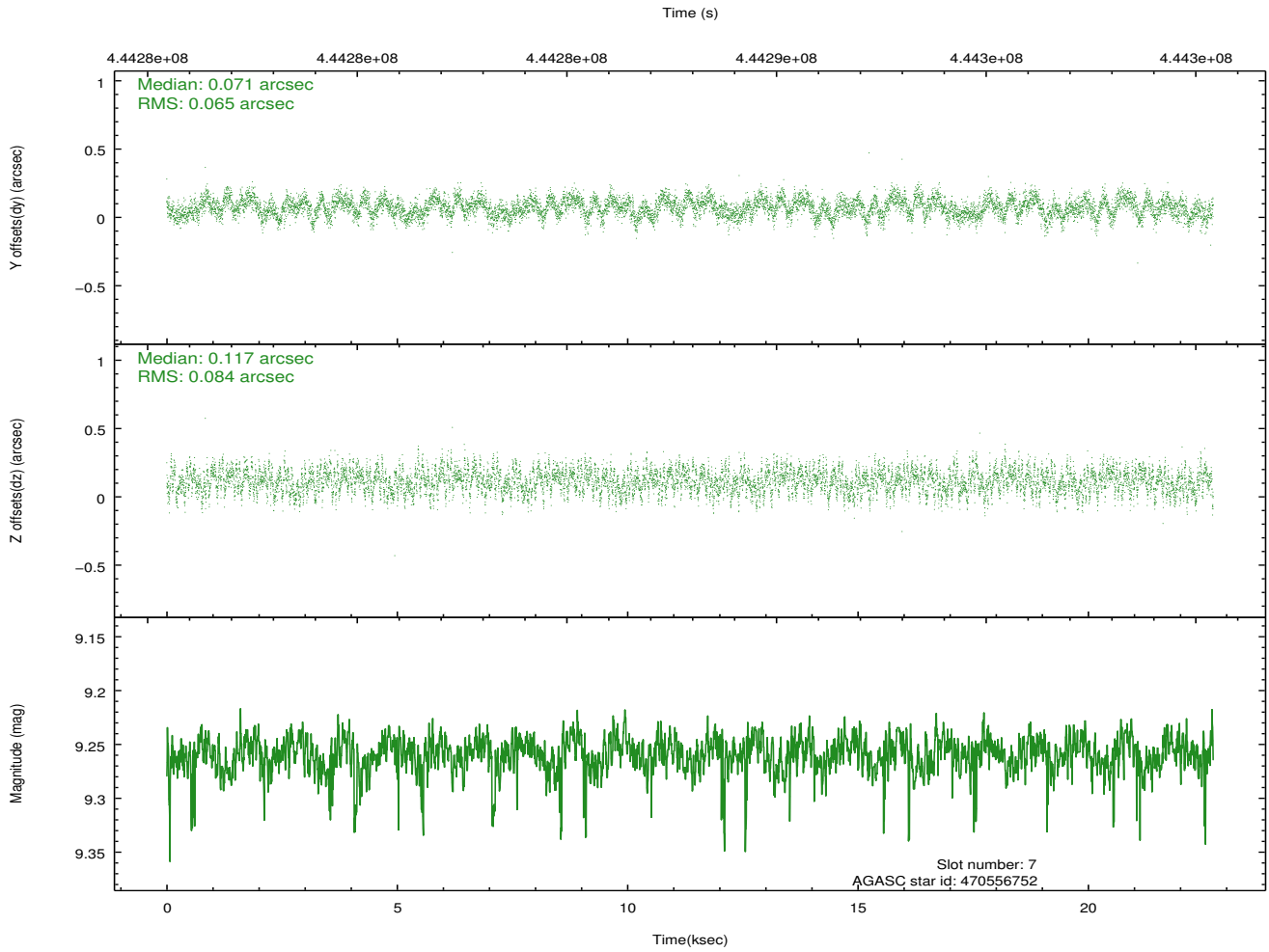
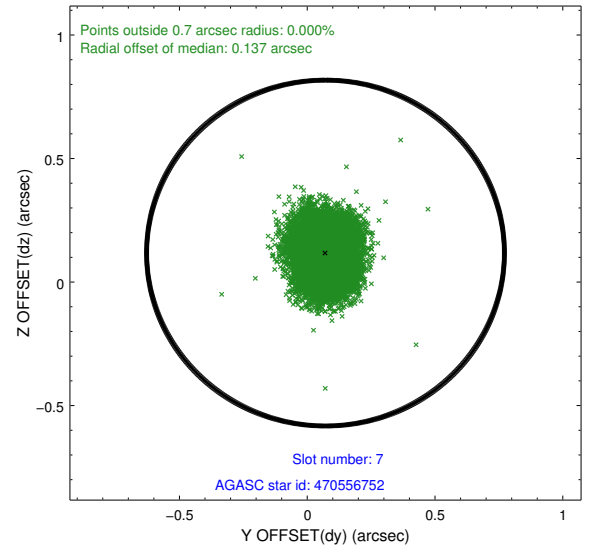
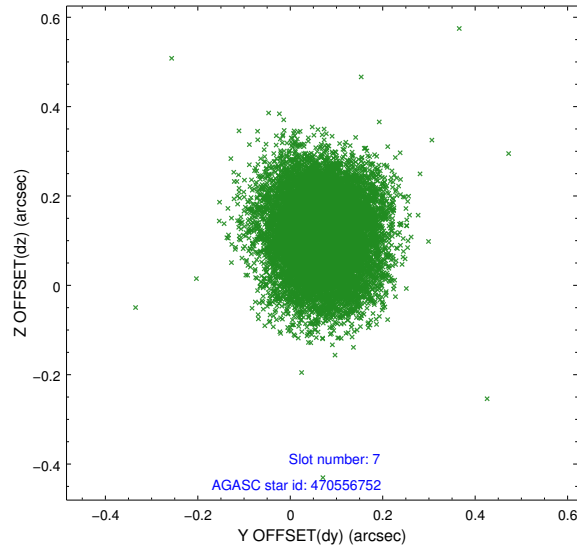
2.4.3 Slot 5



2.4.4 Slot 6

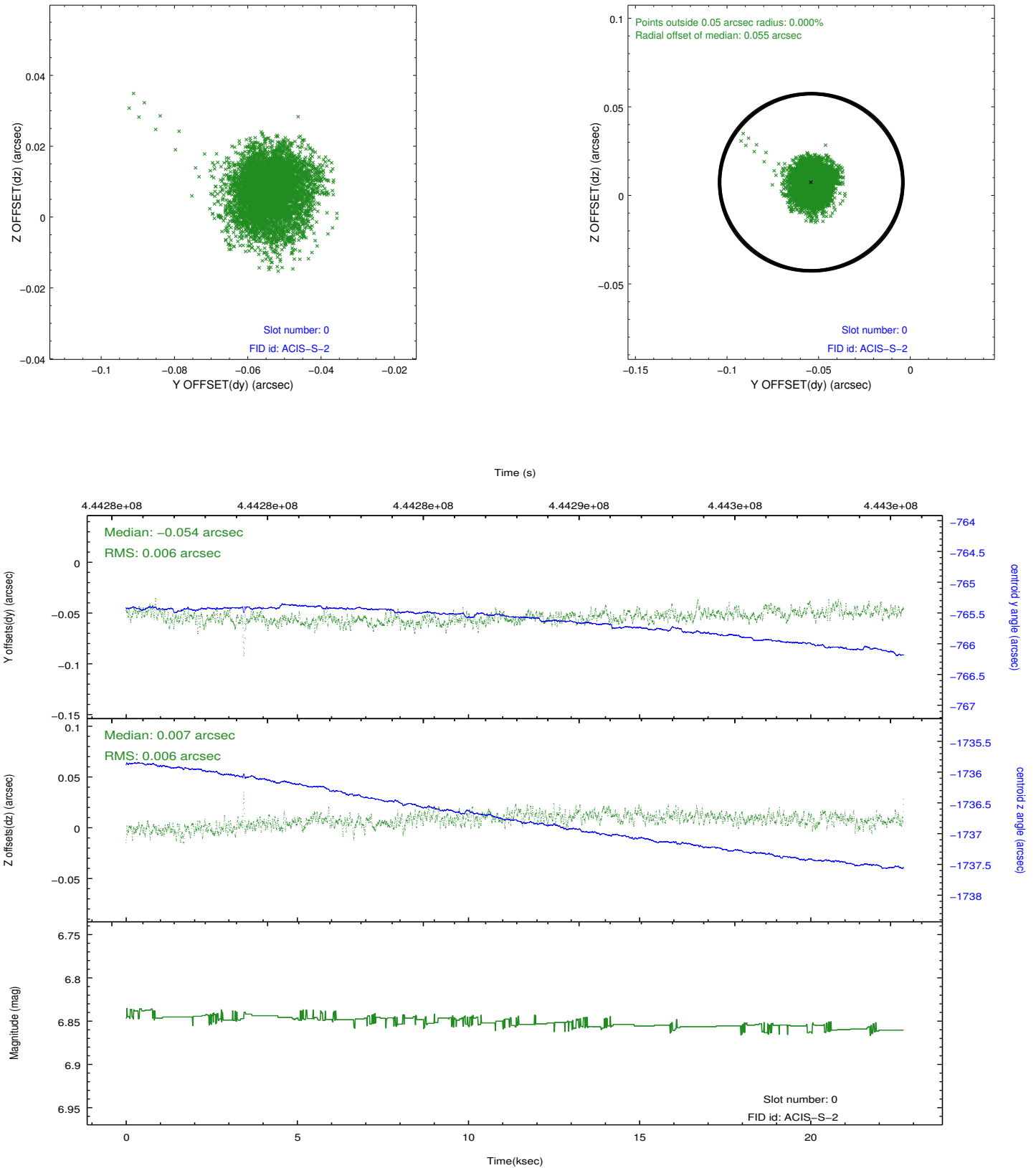


2.4.5 Slot 7

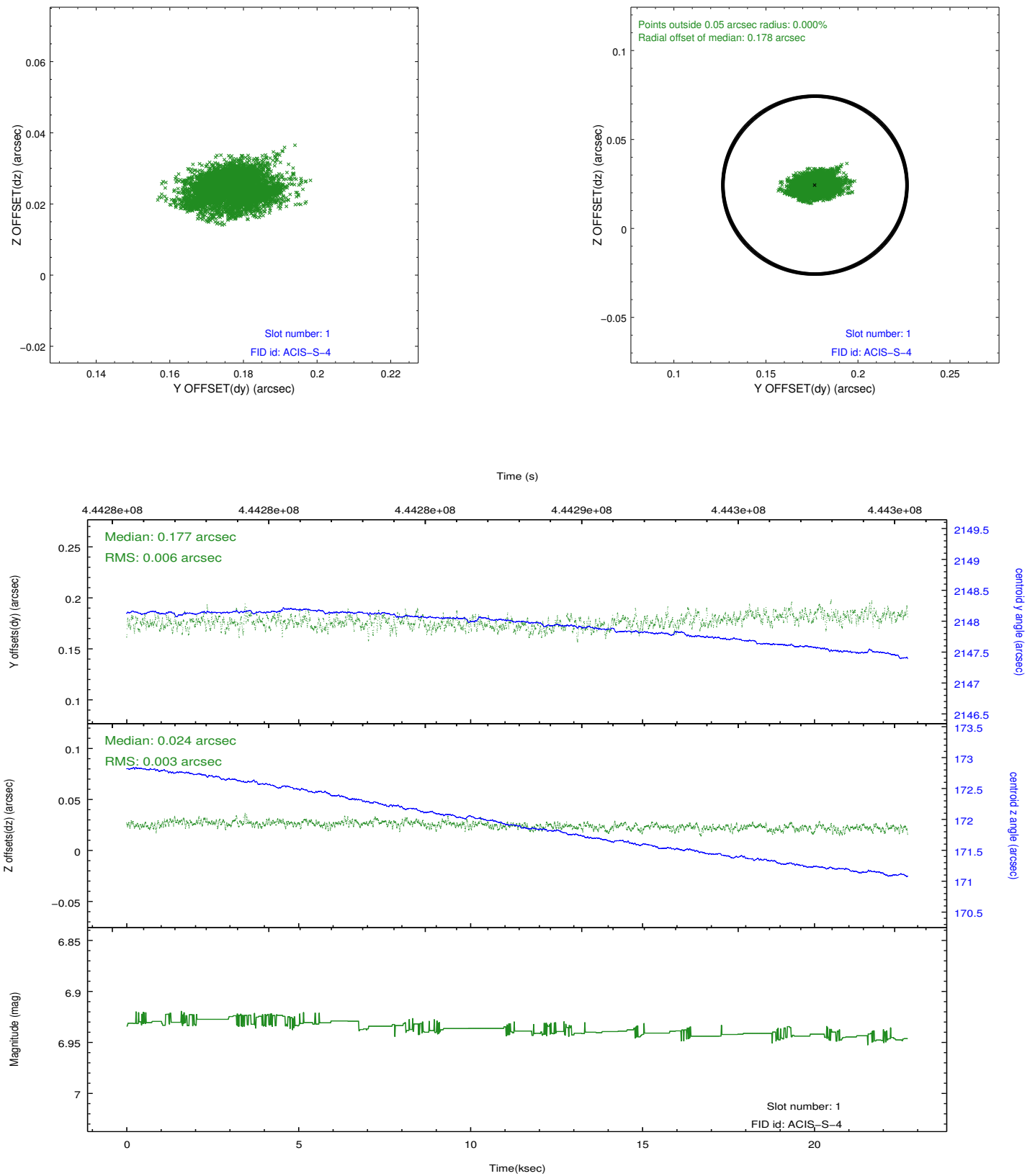


2.5 FID Slots

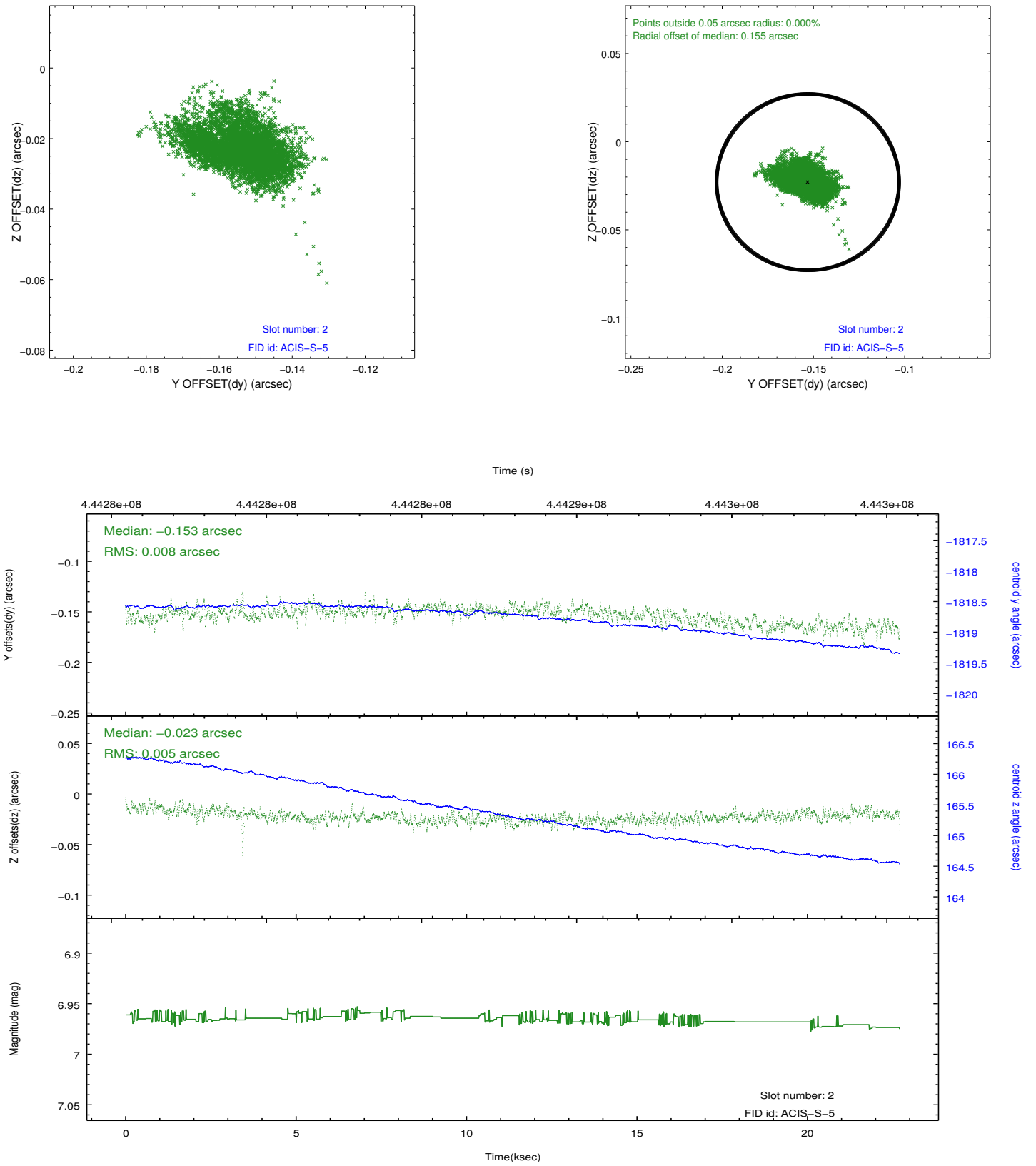
2.5.1 Slot 0



2.5.2 Slot 1



2.5.3 Slot 2



A Summary

A.1 Status

V&V Scientist	Jen Lauer
V&V Date (YYYY-MM-DD)	2012.01.30
V&V Edition	1
V&V Disposition and Status	OK
V&V Charge Time	22.053998686314

A.2 Comments