

V&V Reference Report

L2 ASCDS Version : 8.4.5

Observation 12961 - L2 Version 2
Chandra X-Ray Center

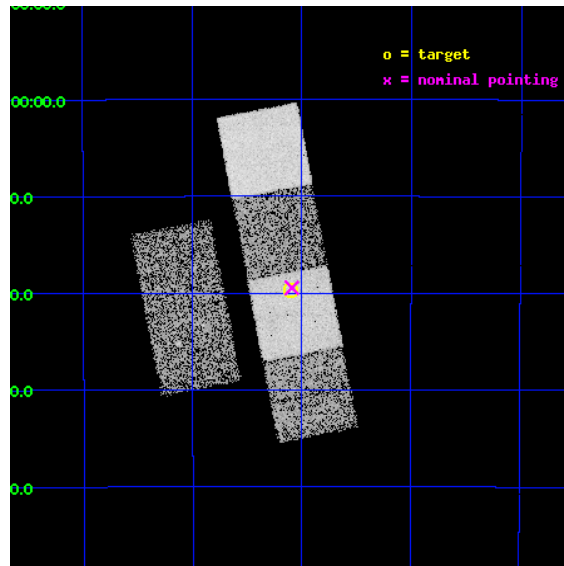
L2 Processing Date : Jul 7 2012

Contents

1	Front	2
2	OBI	3
2.1	OBI	3
2.1.1	Images	3
2.1.2	Bias	3
2.1.3	Parameters	4
2.1.4	Events	4
2.2	Compared Parameters	5
2.3	Aspect	6
2.4	Star Slots	9
2.4.1	Slot 3	9
2.4.2	Slot 4	10
2.4.3	Slot 5	11
2.4.4	Slot 6	12
2.4.5	Slot 7	13
2.5	FID Slots	14
2.5.1	Slot 0	14
2.5.2	Slot 1	15
2.5.3	Slot 2	16
A	Summary	17
A.1	Status	17
A.2	Comments	17

1 Front

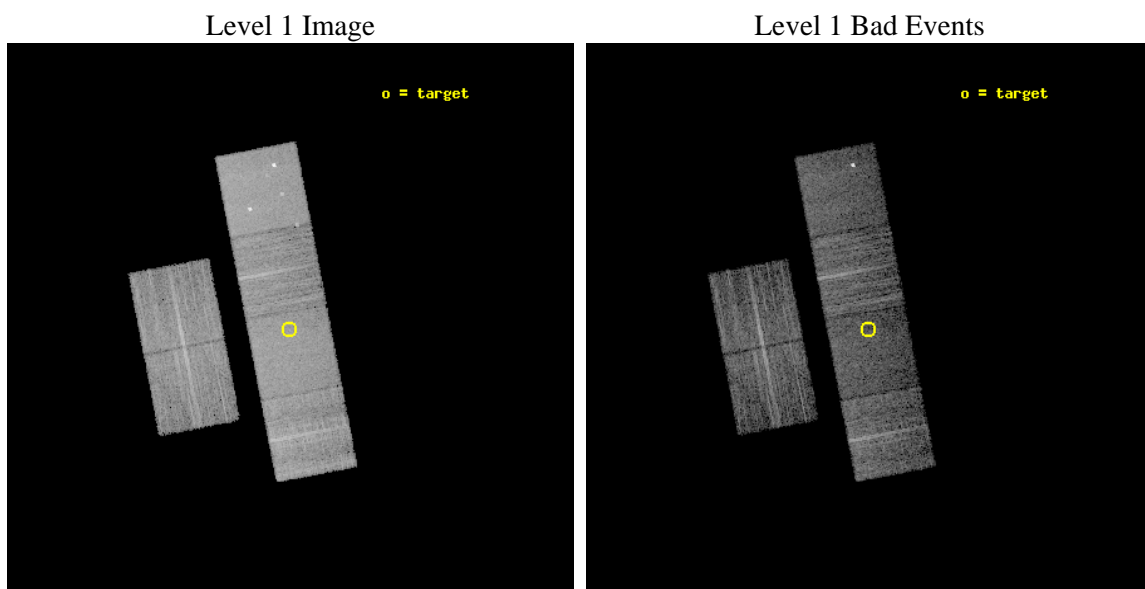
seq_num	600929	Sequence number
obs_id	12961	Observation id
title	X-rays from Isolated Elliptical Galaxies	Proposal title
observer	Dr. DAVID BUOTE	Principal investigator
object	ESO318-021	Source name
dtcycle	0	
cycle	P	events from which exps? Prim/Second/Both
ra_targ	163.275	Observer's specified target RA [deg]
dec_targ	-40.329056	Observer's specified target Dec [deg]
ra_nom	163.27272495588	Nominal RA [deg]
dec_nom	-40.32456021142	Nominal Dec [deg]
roll_nom	79.119674737672	Nominal Roll [deg]
revision	2	Processing version of data
ontime	7548.7999719381	Sum of GTIs [s]
livetime	7453.2125213518	Livetime [s]
ontime2	7548.7999719381	Sum of GTIs [s]
ontime3	7548.7999719381	Sum of GTIs [s]
ontime5	7548.7999719381	Sum of GTIs [s]
ontime6	7548.7999719381	Sum of GTIs [s]
ontime7	7548.7999719381	Sum of GTIs [s]
ontime8	7548.7999719381	Sum of GTIs [s]
l2events	87017	Number of level 2 events



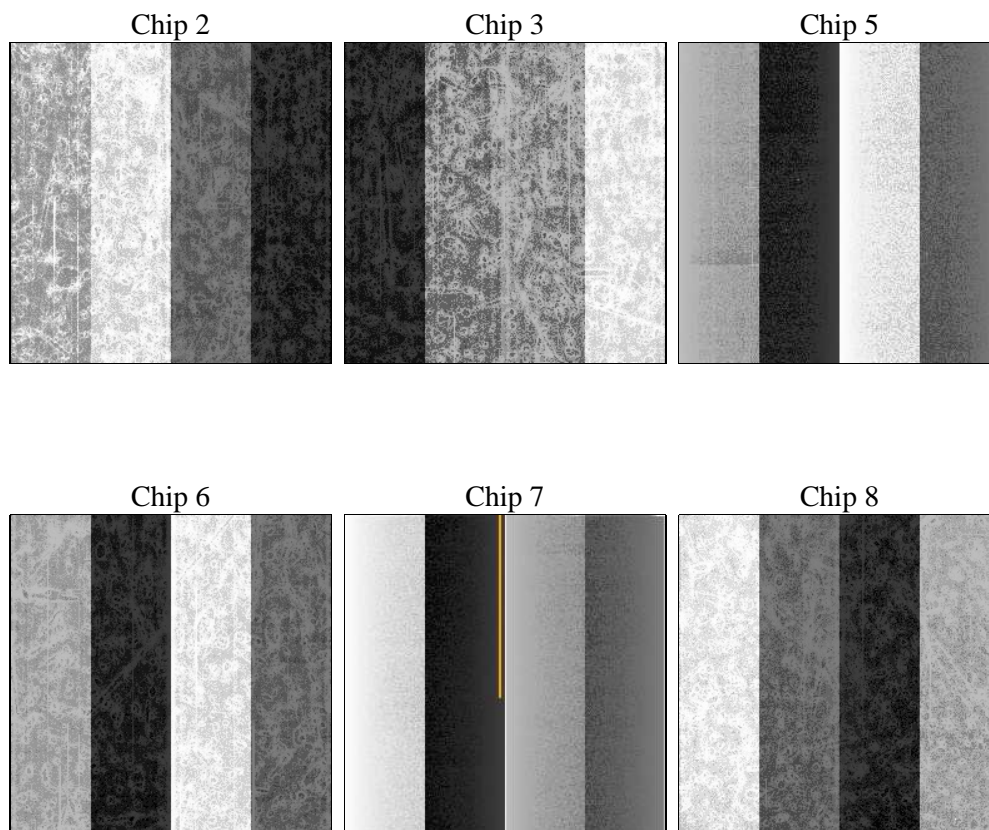
2 OBI

2.1 OBI

2.1.1 Images



2.1.2 Bias



2.1.3 Parameters

obi_num	0	Obi number	sched_exp_time	7500.000000	[s] Scheduled observation exposure time
ascdsver	8.4.5	Processing system revision	ontime	7548.7999719381	Sum of GTIs [s]
caldsver	4.5.0	 	ontime2	7548.7999719381	Sum of GTIs [s]
date	2012-07-07T16:39:29	Date and time of file creation	ontime3	7548.7999719381	Sum of GTIs [s]
revision	2	Processing version of data	ontime5	7548.7999719381	Sum of GTIs [s]
			ontime6	7548.7999719381	Sum of GTIs [s]
			ontime7	7548.7999719381	Sum of GTIs [s]
			ontime8	7548.7999719381	Sum of GTIs [s]
			l1events	374809	Number of level 1 events

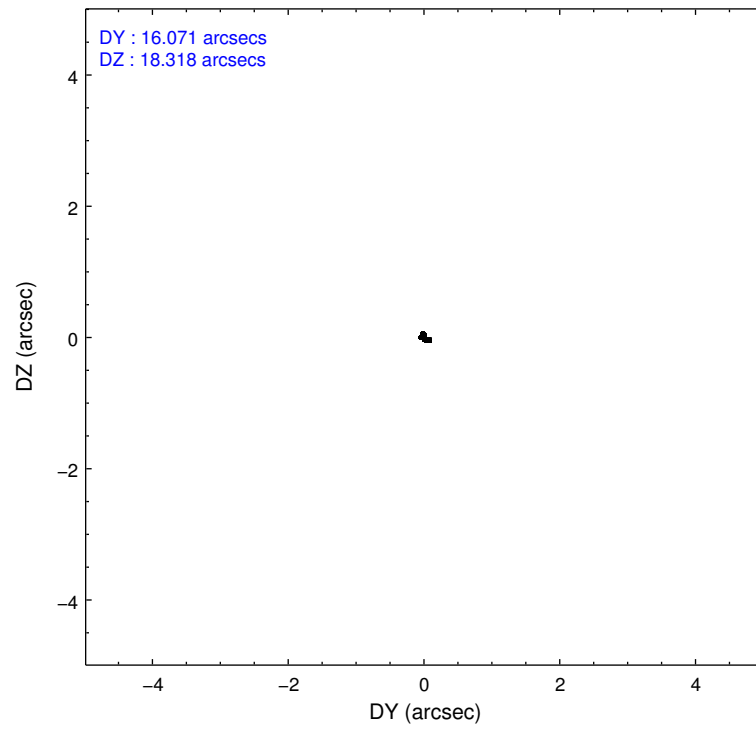
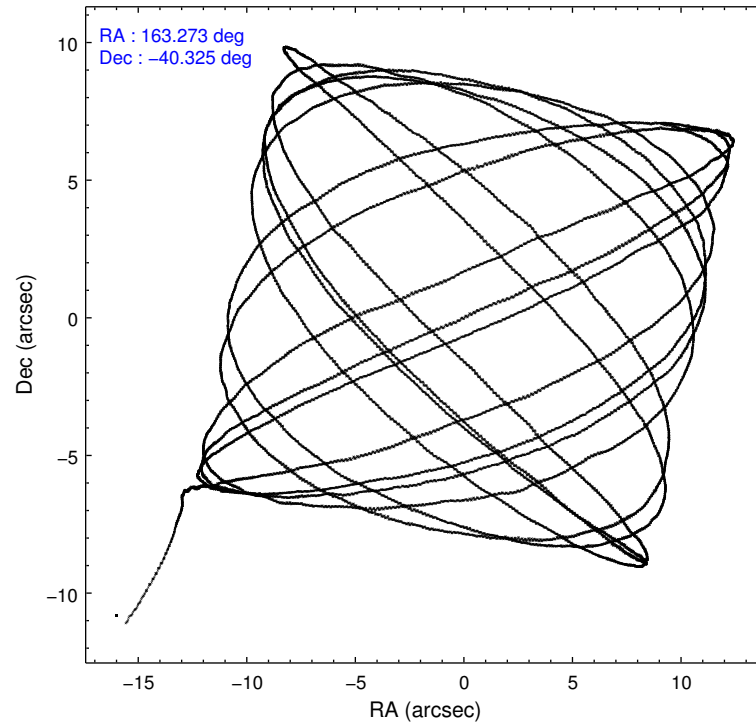
2.1.4 Events

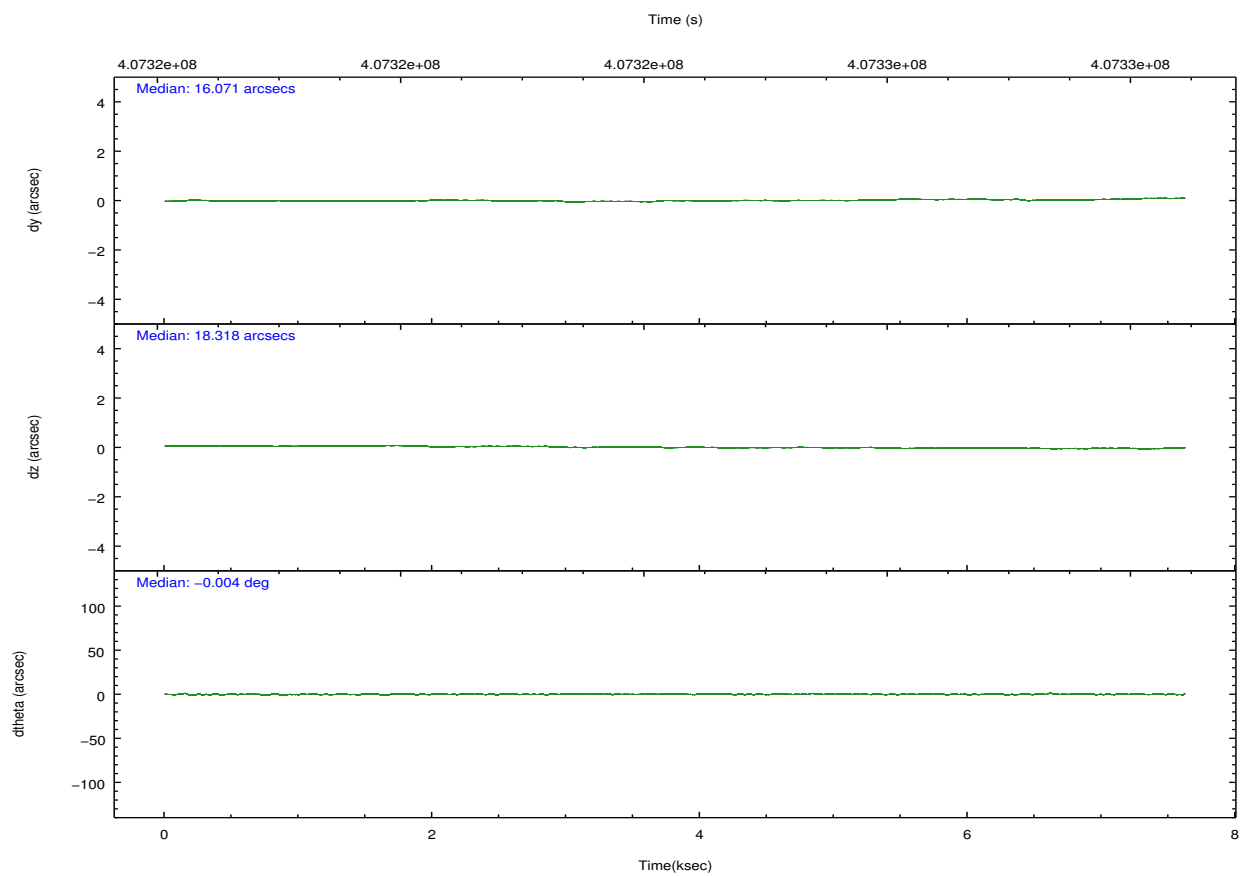
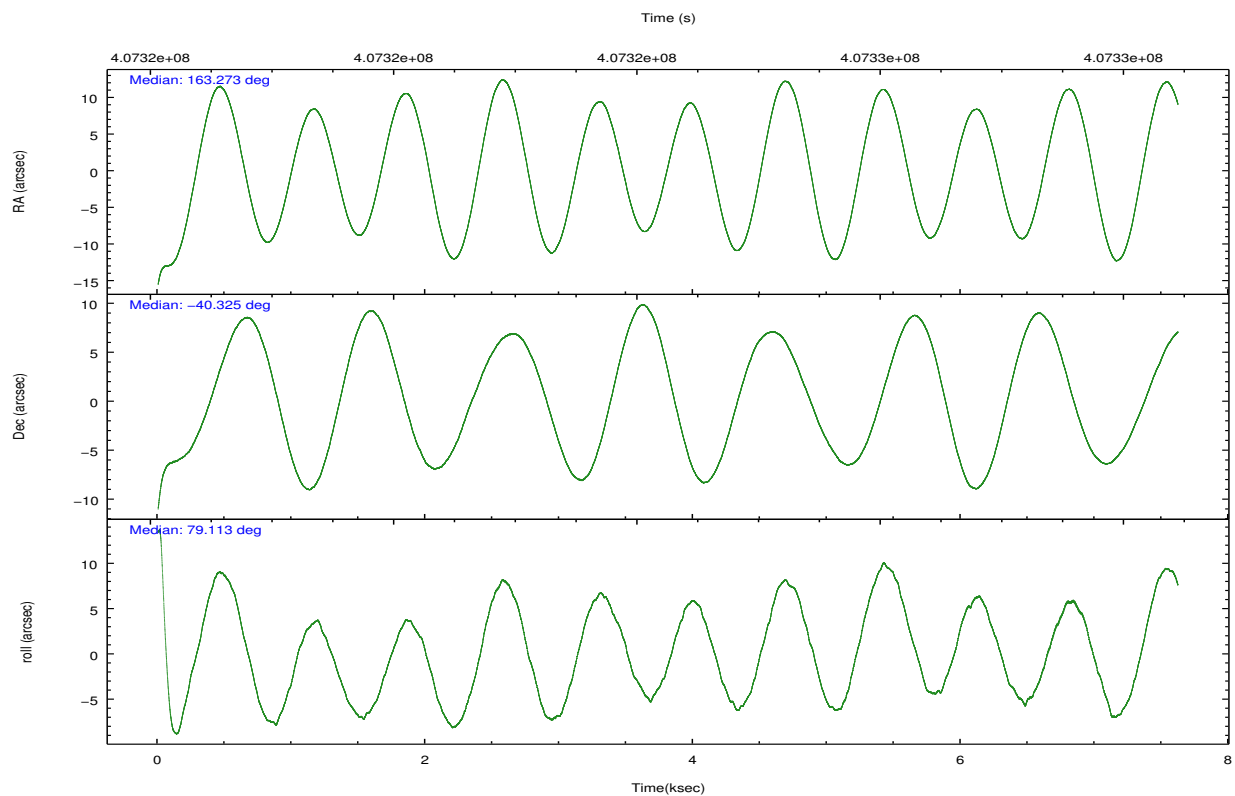
	ccd 2	ccd 3	ccd 5	ccd 6	ccd 7	ccd 8		ccd 2	ccd 3	ccd 5	ccd 6	ccd 7	ccd 8
level 1 events	53045	50509	82984	55133	65410	67728	grade 0 events	2073	1859	4812	2172	2876	5725
rejected events	47329	45204	42118	49104	35631	49306		3%	3%	5%	3%	4%	8%
rejected %	89%	89%	50%	89%	54%	72%	grade 1 events	27	34	175	23	82	55
								0%	0%	0%	0%	0%	0%
							grade 2 events	1308	1138	12128	1303	6147	4257
								2%	2%	14%	2%	9%	6%
							grade 3 events	624	598	1594	636	2610	1941
								1%	1%	1%	1%	3%	2%
							grade 4 events	569	609	1439	611	2674	1734
								1%	1%	1%	1%	4%	2%
							grade 5 events	2196	2444	6469	2413	6676	3451
								4%	4%	7%	4%	10%	5%
							grade 6 events	1152	1105	20922	1312	15503	4776
								2%	2%	25%	2%	23%	7%
							grade 7 events	45096	42722	35445	46663	28842	45789
								85%	84%	42%	84%	44%	67%

2.2 Compared Parameters

Parameter	Planned	Actual	Parameter	Planned	Actual
Instrument	ACIS	ACIS	Obspar format version number	7	7
Detector	ACIS-235678	ACIS-235678	Obspar file type	PREDICTED	ACTUAL
Grating	NONE	NONE	Obspar update status	NONE	UPDATED
Data mode	VFAINT	VFAINT	CCD I0 on	N	N
Observation mode	POINTING	POINTING	CCD I1 on	N	N
[deg] Pointing RA	163.284950	163.2727249558799	CCD I2 on	O2	Y
[deg] Pointing Dec	-40.350235	-40.32456021142035	CCD I3 on	Y	Y
[deg] Pointing Roll	78.970933	79.11967473767233	CCD S0 on	N	N
[mm] SIM focus pos	-0.684267	-0.6828225247311905	CCD S1 on	Y	Y
[mm] SIM defocus	0	0.001444936568705701	CCD S2 on	Y	Y
[mm] SIM translation stage pos	-190.132523	-190.1425803651734	CCD S3 on	Y	Y
[mm] SIM translation stage offset	0	0.01005778216563158	CCD S4 on	O1	Y
[s] Observation start time (MET)	407320576.184000	407319238.48505	CCD S5 on	N	N
Observation start date	2010-11-28T08:35:10	2010-11-28T08:13:58	Number of optional ACIS chips dropped	0	0
[s] Observation end time (MET)	407328076.184000	407329073.36056	On-chip summing requested	N	N
Observation end date	2010-11-28T10:40:10	2010-11-28T10:57:53	Subarray requested	NONE	NONE
Read mode	TIMED	TIMED	Alternating exposures requested	N	N
			[s] Primary exposure time	0.000000	3.2

2.3 Aspect



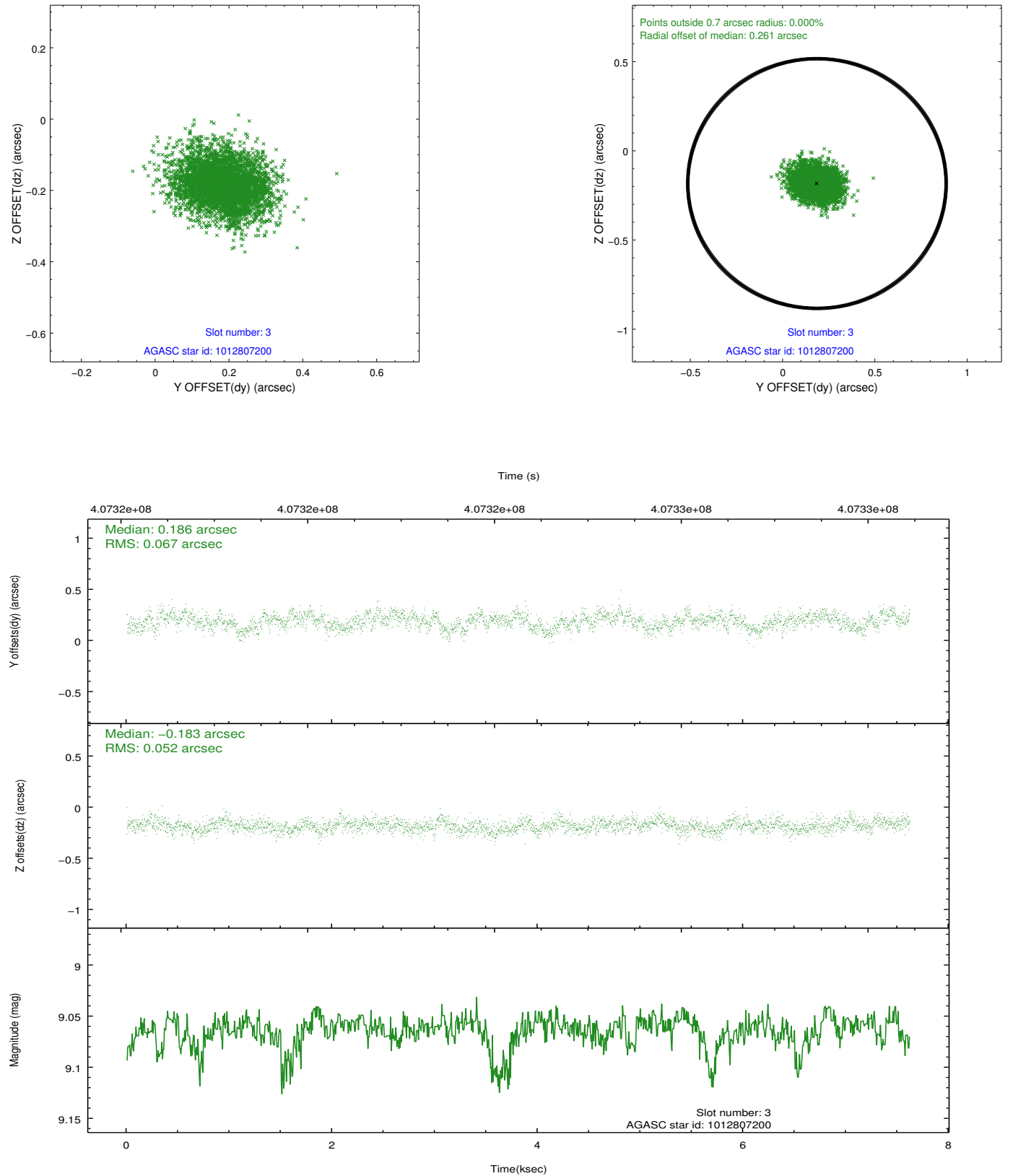


Slot Statistics

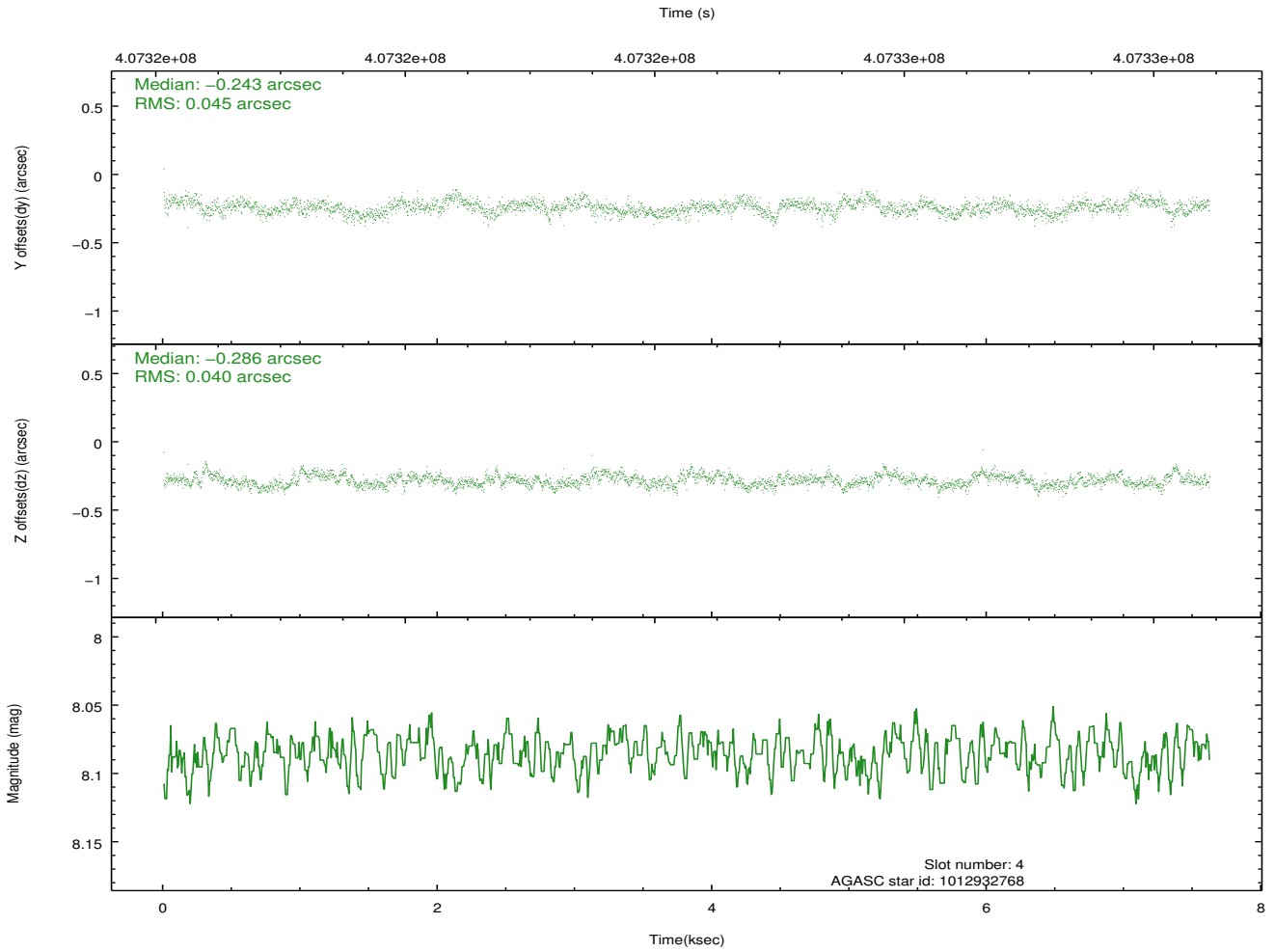
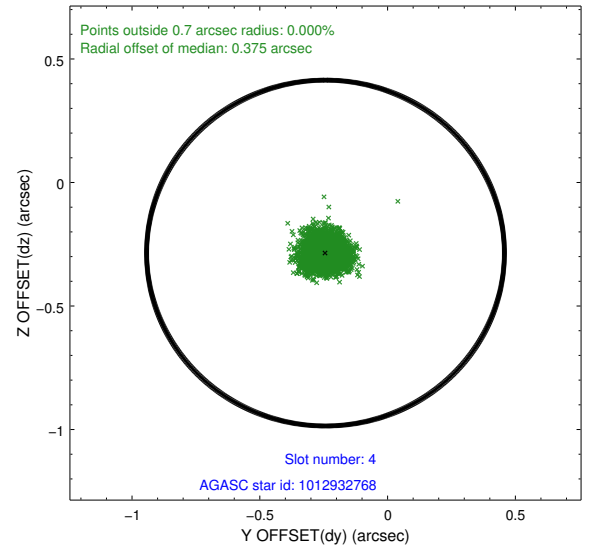
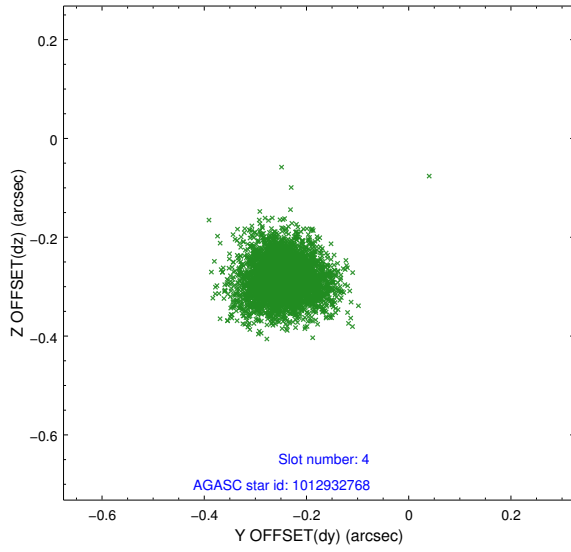
slot	status	id	mag	n_pts	med_dy	med_dz	dr1	dr2	ra	dec	mean_y	mean_z
0	FID	ACIS-S-1	6.96	1859	0.062	-0.010	0.007	0.011	0.000000	0.000000	926.98	-1735.40
1	FID	ACIS-S-4	6.97	1859	0.087	-0.019	0.006	0.010	0.000000	0.000000	2144.86	167.95
2	FID	ACIS-S-5	7.00	1859	-0.176	0.041	0.005	0.010	0.000000	0.000000	-1821.14	162.52
3	GUIDE	1012807200	9.06	3715	0.186	-0.183	0.090	0.146	162.449393	-40.833359	-2152.77	1899.10
4	GUIDE	1012932768	8.09	3717	-0.243	-0.286	0.064	0.104	163.114277	-39.871789	1599.46	793.10
5	GUIDE	1012937176	8.11	3717	-0.106	0.189	0.079	0.123	164.035744	-40.082068	1335.70	-1845.67
6	GUIDE	1012941672	9.37	3710	0.216	-0.097	0.121	0.195	163.199515	-40.640763	-1070.33	28.65
7	GUIDE	1012944344	9.40	3714	-0.055	0.379	0.114	0.190	164.195879	-40.338547	507.26	-2446.99

2.4 Star Slots

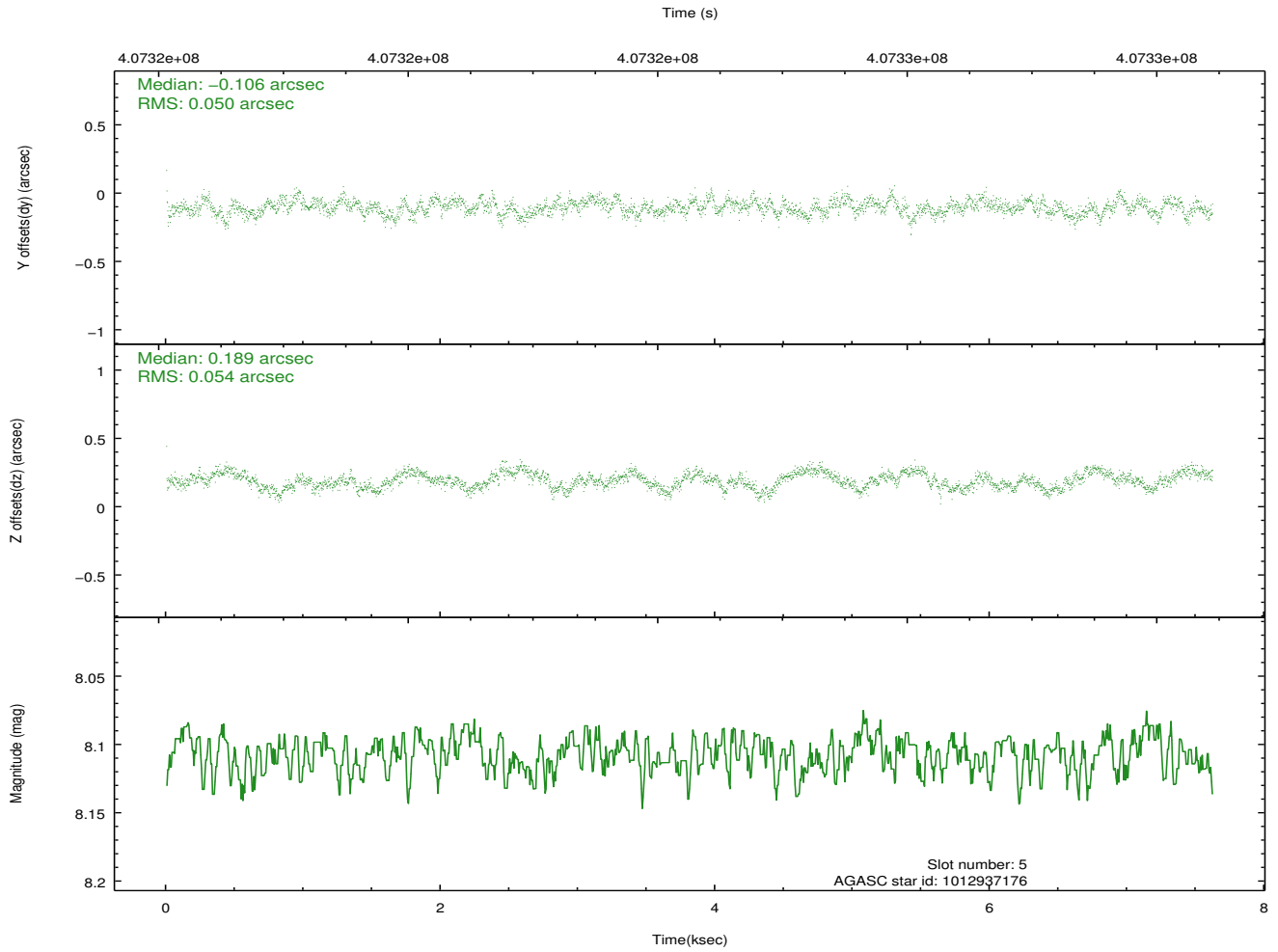
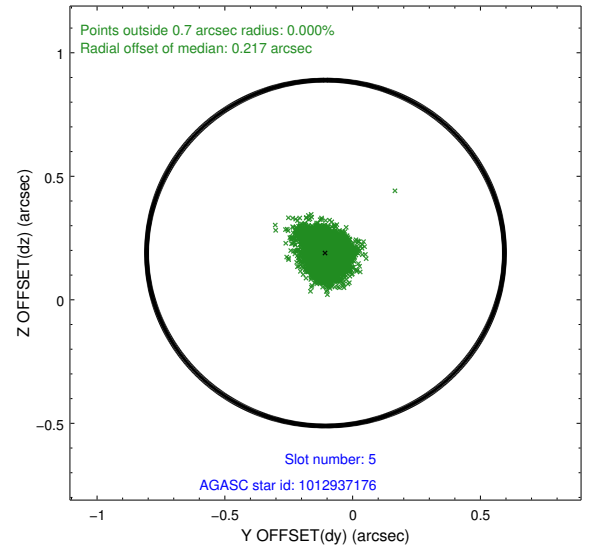
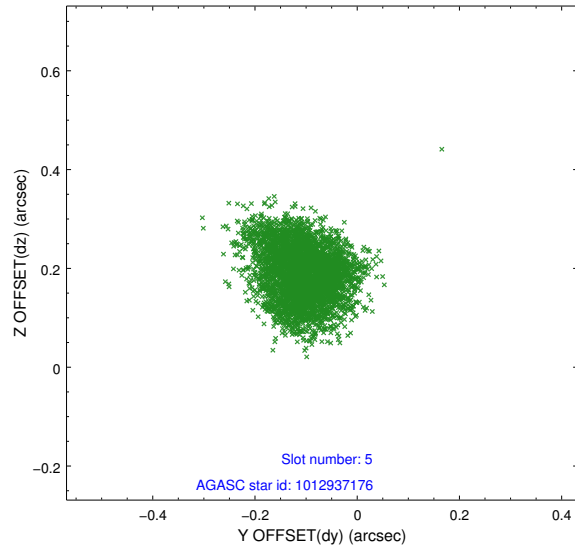
2.4.1 Slot 3



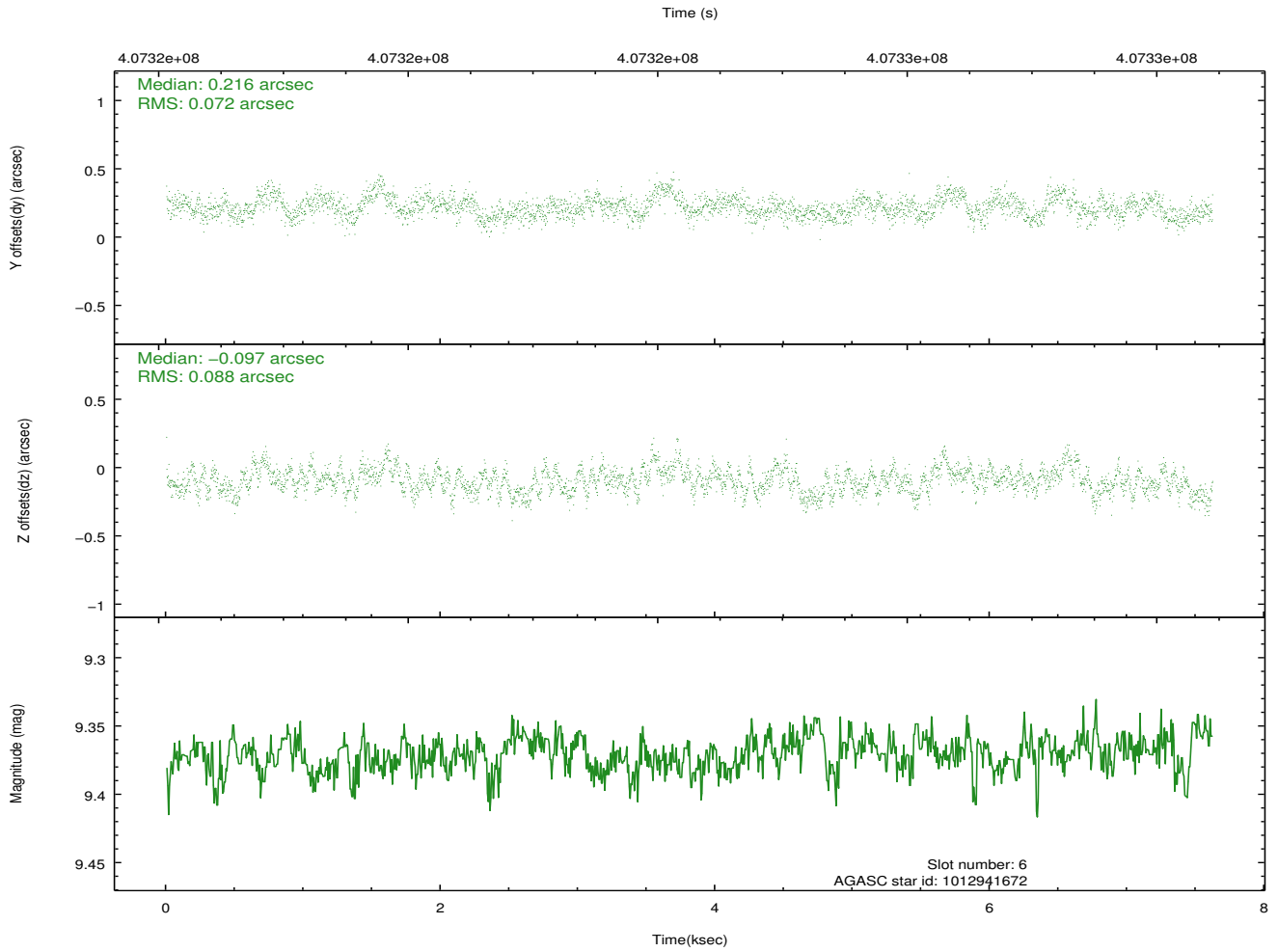
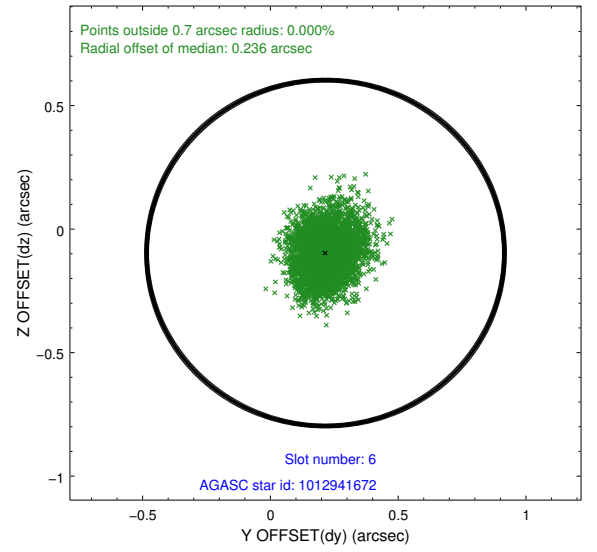
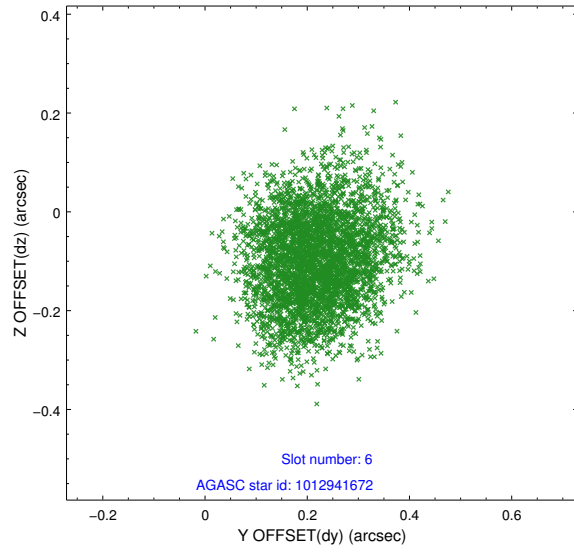
2.4.2 Slot 4



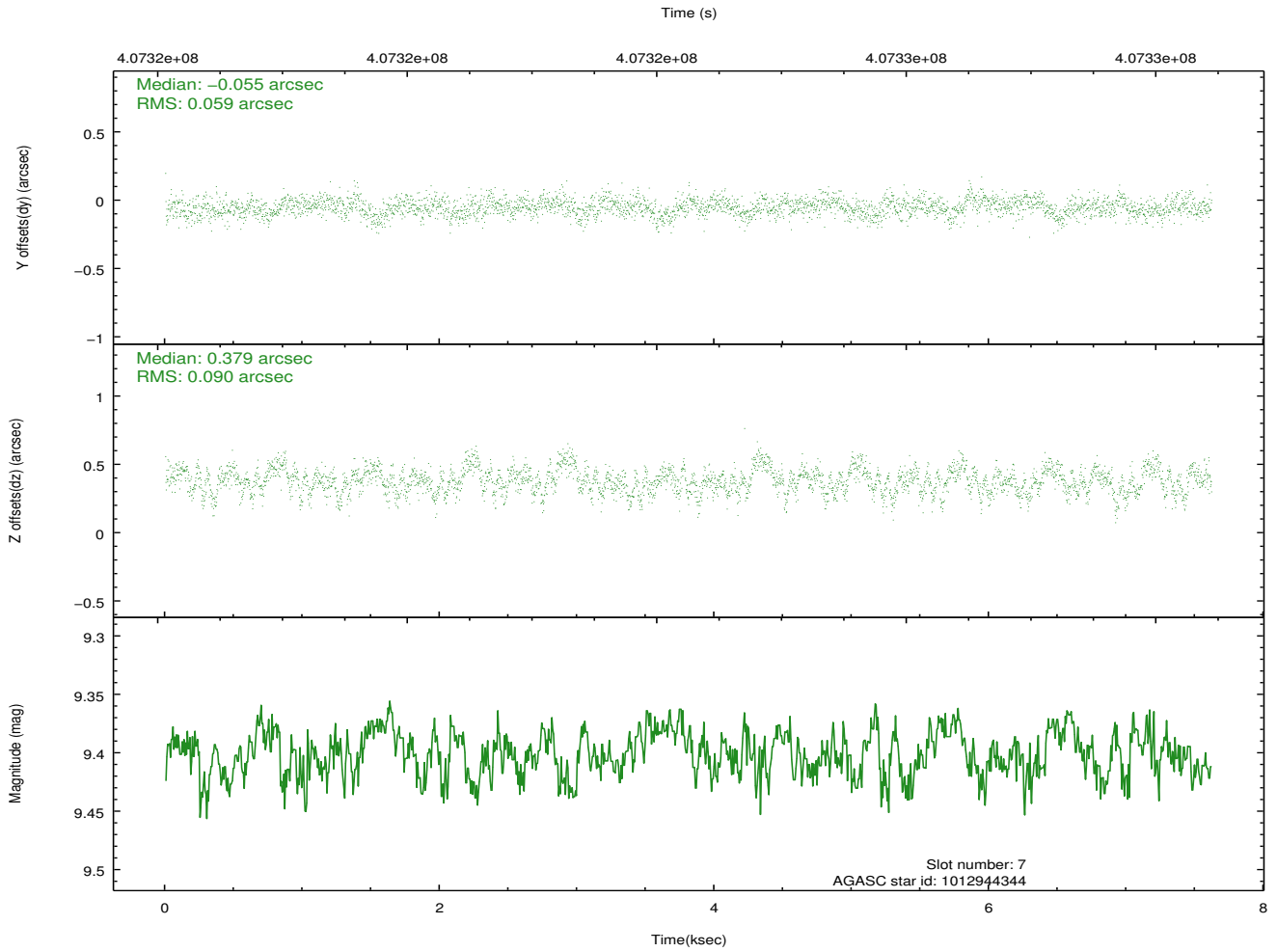
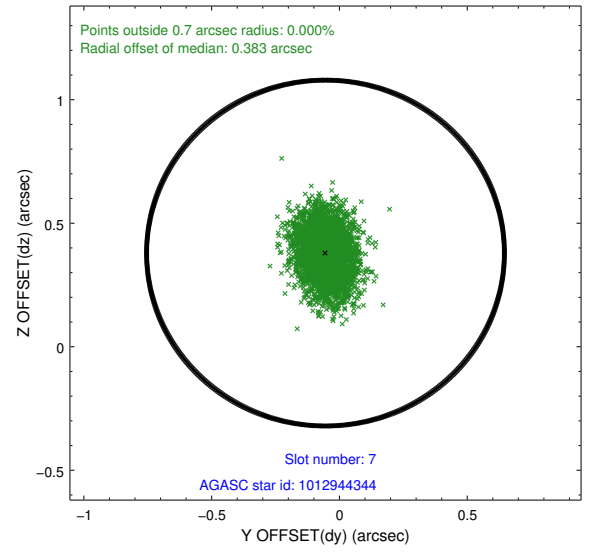
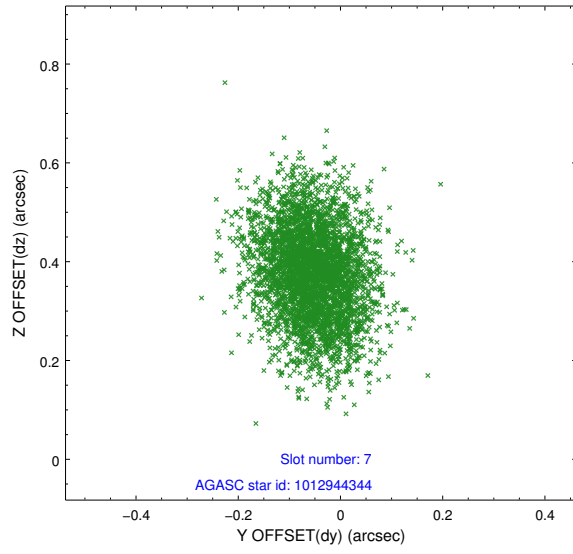
2.4.3 Slot 5



2.4.4 Slot 6

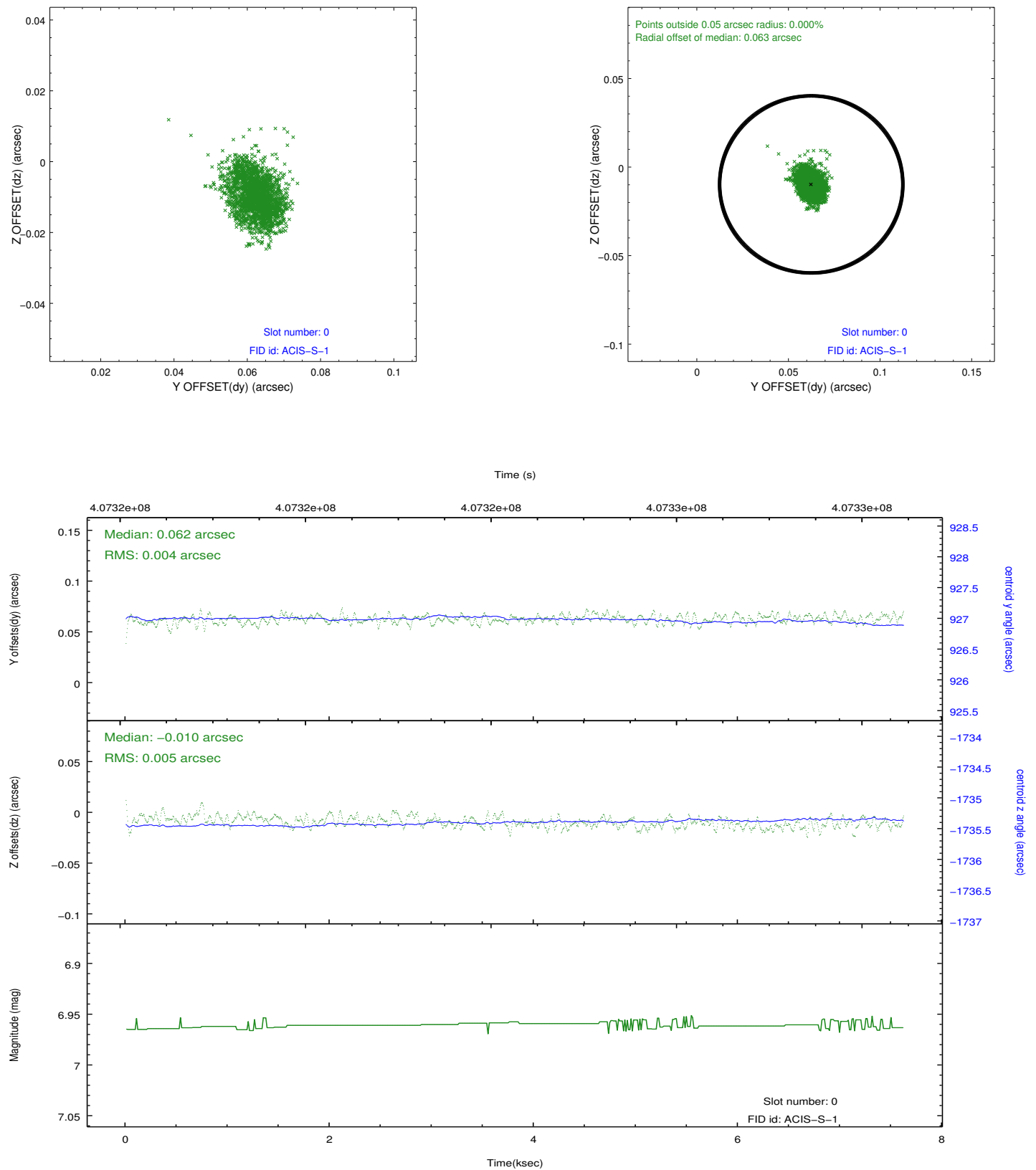


2.4.5 Slot 7

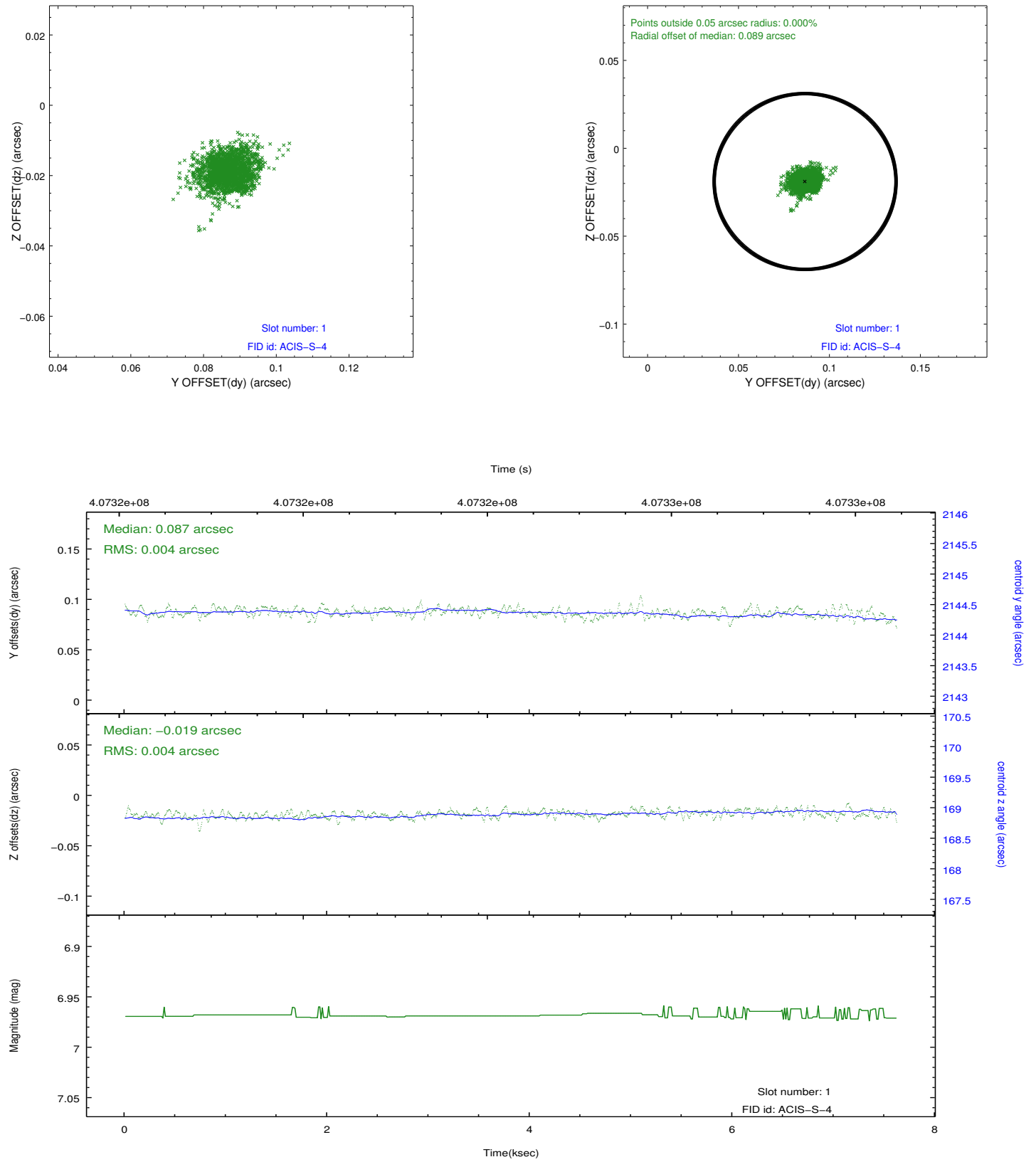


2.5 FID Slots

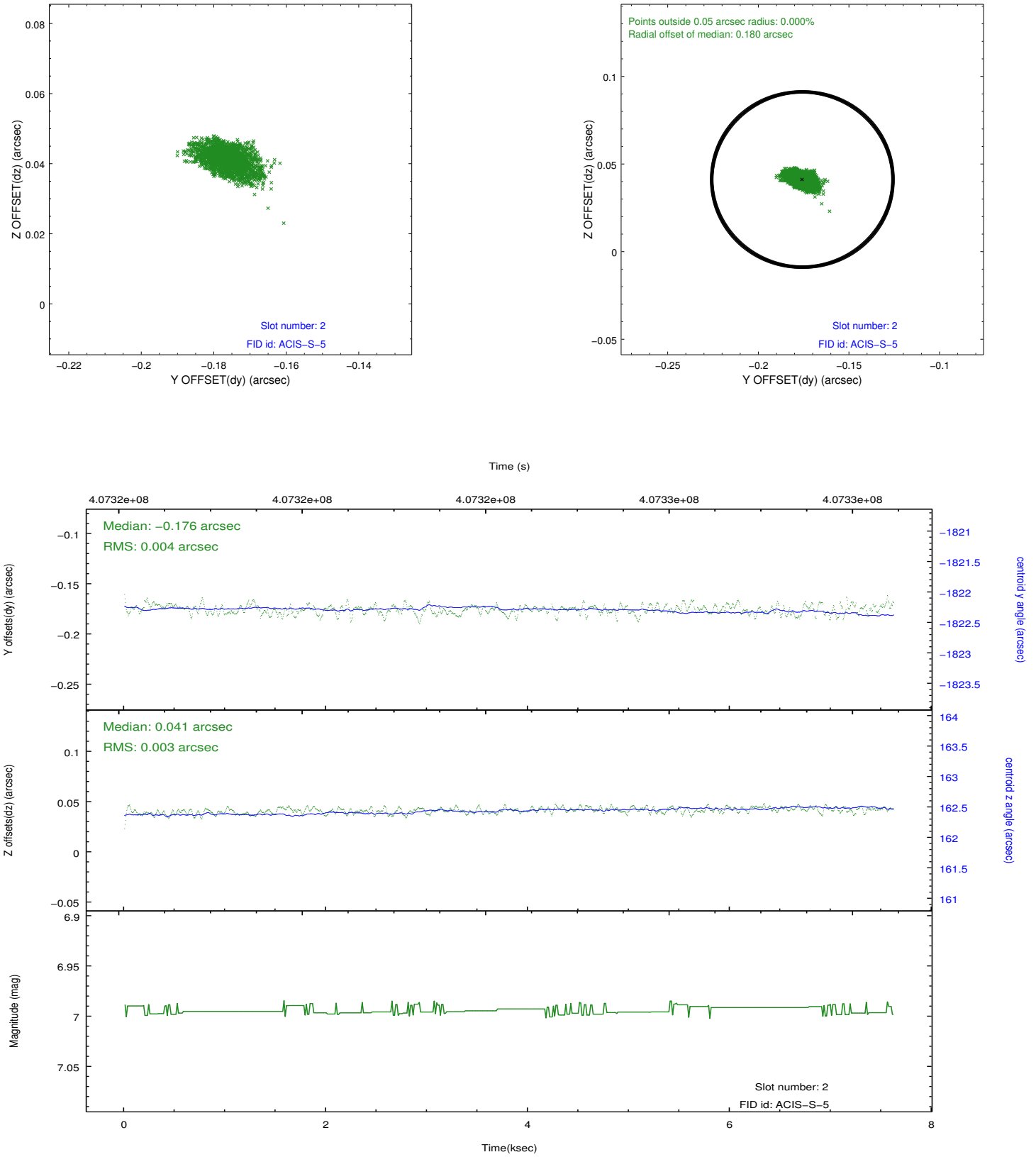
2.5.1 Slot 0



2.5.2 Slot 1



2.5.3 Slot 2



A Summary

A.1 Status

V&V Scientist	Jen Lauer
V&V Date (YYYY-MM-DD)	2012.07.17
V&V Edition	1
V&V Disposition and Status	OK
V&V Charge Time	7.5487999719381

A.2 Comments