

V&V Reference Report

L2 ASCDS Version : 8.4.5

Observation 12131 - L2 Version 2
Chandra X-Ray Center

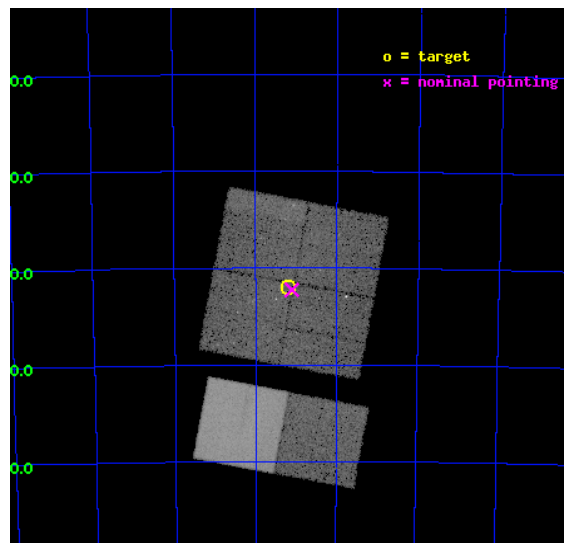
L2 Processing Date : Jun 23 2012

Contents

1	Front	2
2	OBI	3
2.1	OBI	3
2.1.1	Images	3
2.1.2	Bias	3
2.1.3	Parameters	4
2.1.4	Events	4
2.2	Compared Parameters	5
2.3	Aspect	6
2.4	Star Slots	9
2.4.1	Slot 3	9
2.4.2	Slot 4	10
2.4.3	Slot 5	11
2.4.4	Slot 6	12
2.4.5	Slot 7	13
2.5	FID Slots	14
2.5.1	Slot 0	14
2.5.2	Slot 1	15
2.5.3	Slot 2	16
A	Summary	17
A.1	Status	17
A.2	Comments	17

1 Front

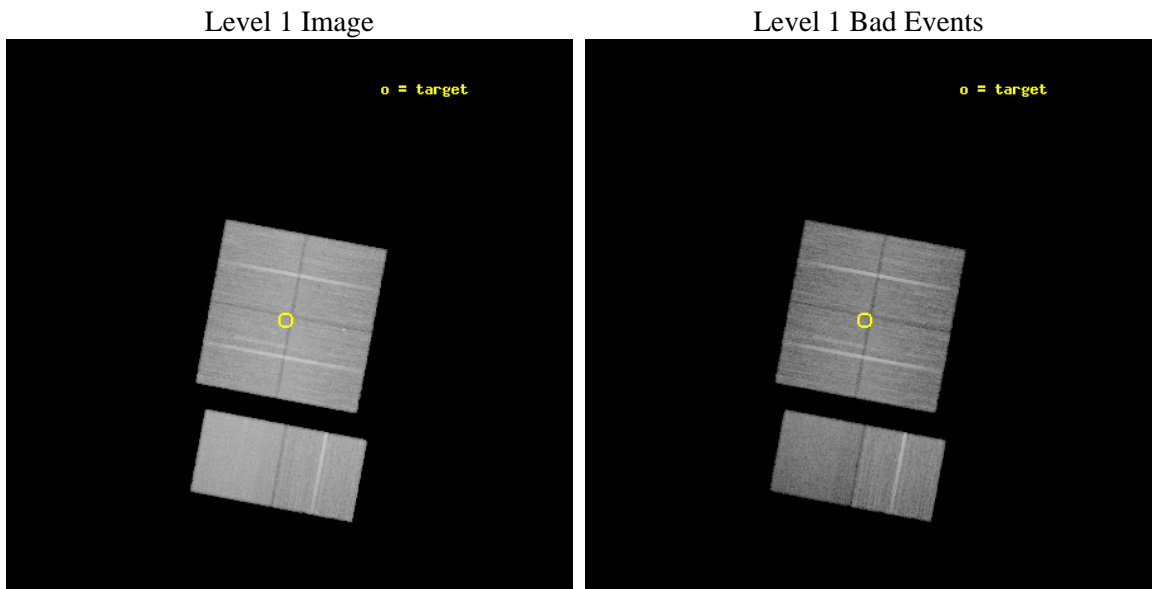
seq_num	200617	Sequence number
obs_id	12131	Observation id
title	Cosmic archaeology with Chandra: from a supergiant shell to young stellar objects in NGC 602	Proposal title
observer	Dr. Lidia Oskinova	Principal investigator
object	NGC 602	Source name
dtcycle	0	
cycle	P	events from which exps? Prim/Second/Both
ra_targ	22.301667	Observer's specified target RA [deg]
dec_targ	-73.533806	Observer's specified target Dec [deg]
ra_nom	22.276435757289	Nominal RA [deg]
dec_nom	-73.537598623978	Nominal Dec [deg]
roll_nom	190.68448436888	Nominal Roll [deg]
revision	2	Processing version of data
ontime	25048.987695992	Sum of GTIs [s]
livetime	24731.802331096	Livetime [s]
ontime0	25048.864575982	Sum of GTIs [s]
ontime1	25048.905615985	Sum of GTIs [s]
ontime2	25048.946655989	Sum of GTIs [s]
ontime3	25048.987695992	Sum of GTIs [s]
ontime6	25049.069775999	Sum of GTIs [s]
ontime7	25049.028735995	Sum of GTIs [s]
l2events	188829	Number of level 2 events



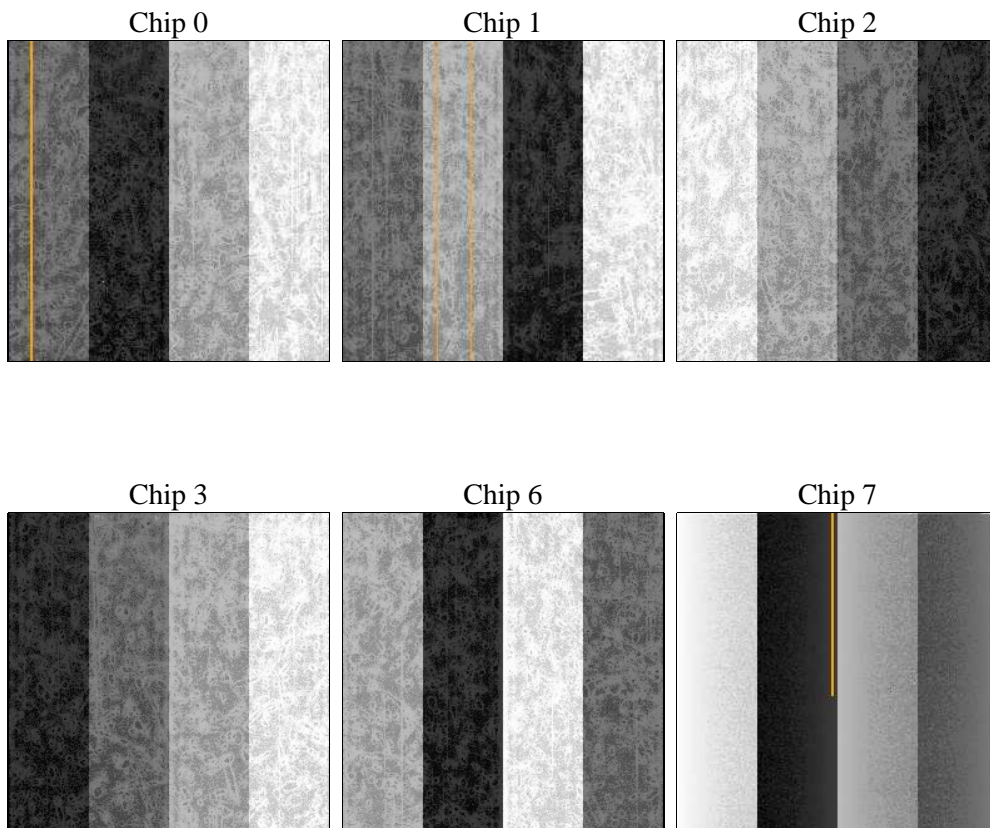
2 OBI

2.1 OBI

2.1.1 Images



2.1.2 Bias



2.1.3 Parameters

obi_num	0	Obi number	sched_exp_time	25000.000000	[s] Scheduled observation exposure time
ascdsver	8.4.5	Processing system revision	ontime	25048.987695992	Sum of GTIs [s]
caldsver	4.4.10	 	ontime0	25048.864575982	Sum of GTIs [s]
date	2012-06-23T18:59:21	Date and time of file creation	ontime1	25048.905615985	Sum of GTIs [s]
revision	2	Processing version of data	ontime2	25048.946655989	Sum of GTIs [s]
			ontime3	25048.987695992	Sum of GTIs [s]
			ontime6	25049.069775999	Sum of GTIs [s]
			ontime7	25049.028735995	Sum of GTIs [s]
			l1events	1162022	Number of level 1 events

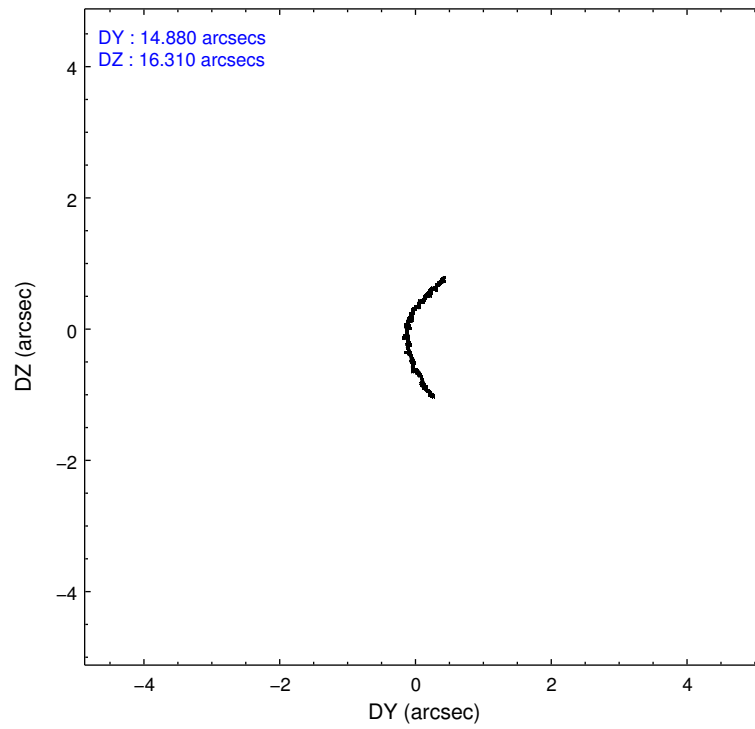
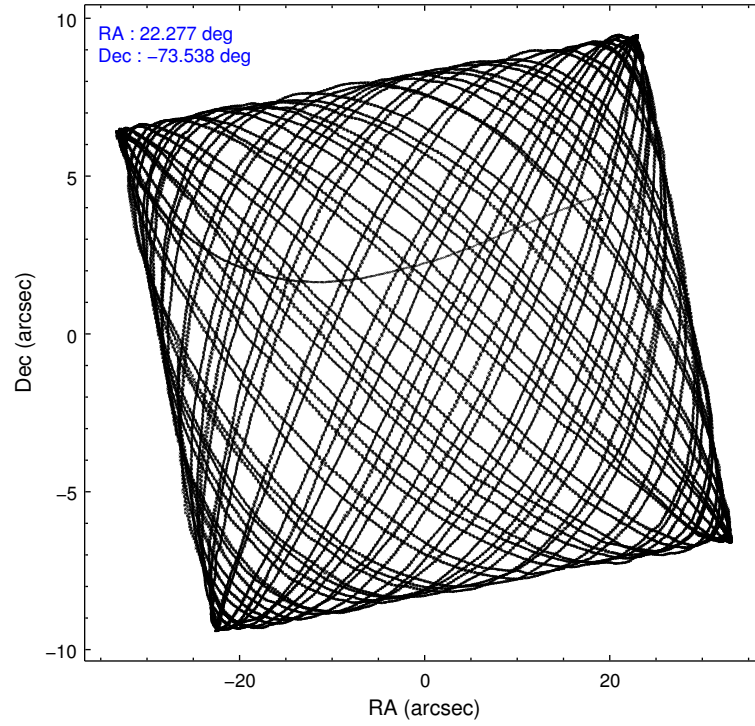
2.1.4 Events

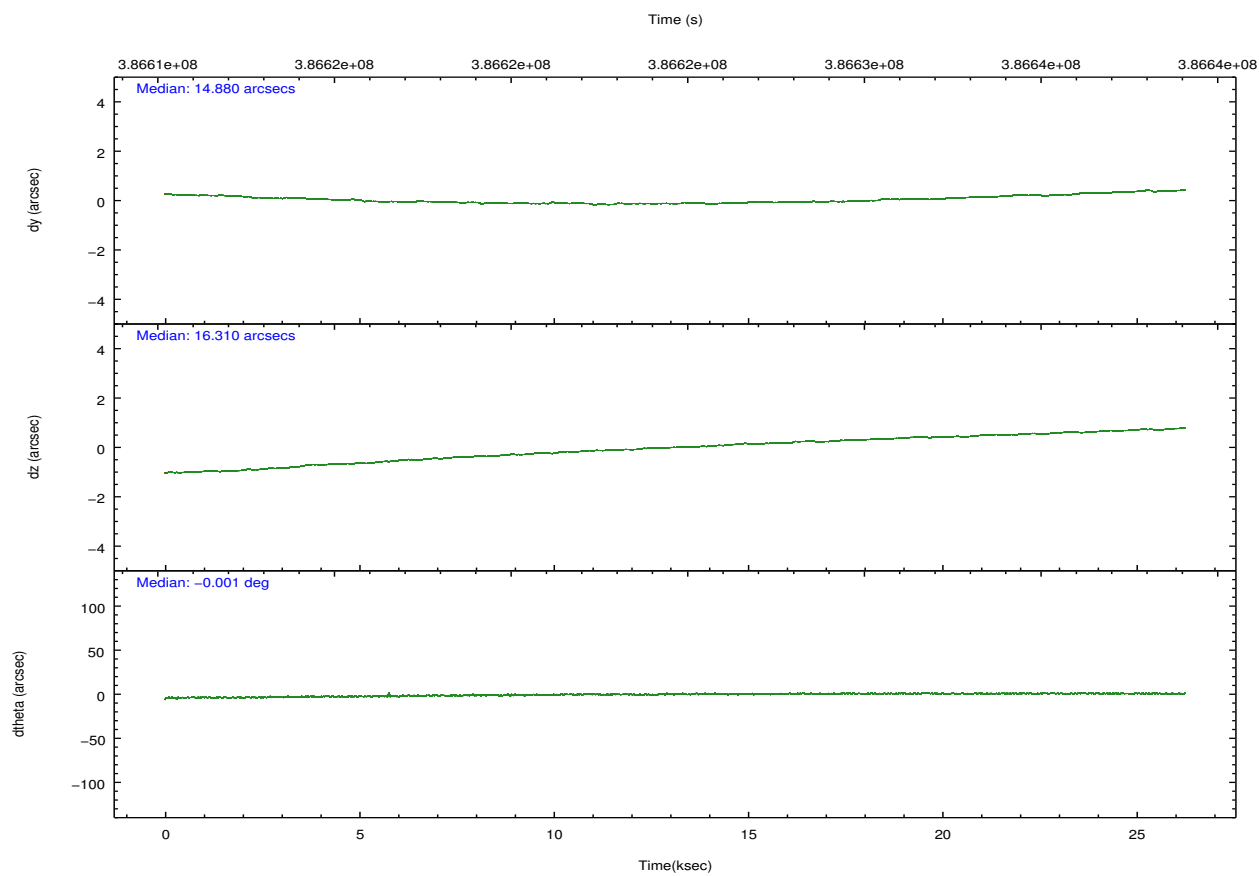
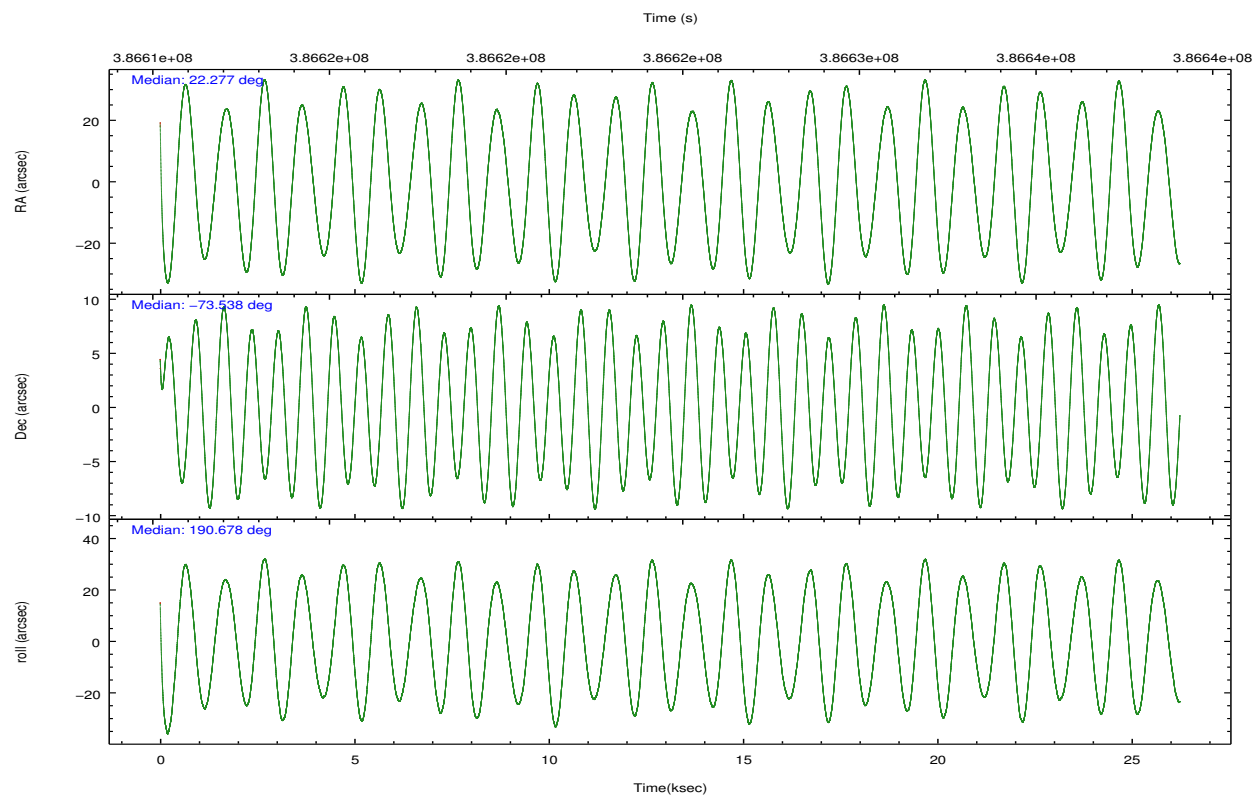
	ccd 0	ccd 1	ccd 2	ccd 3	ccd 6	ccd 7		ccd 0	ccd 1	ccd 2	ccd 3	ccd 6	ccd 7
level 1 events	177021	176086	198311	185866	195314	229424	grade 0 events	7076	8219	8258	6898	7342	9497
rejected events	156603	153156	176935	166321	174118	126005		3%	4%	4%	3%	3%	4%
rejected %	88%	86%	89%	89%	89%	54%	grade 1 events	96	89	106	115	110	308
								0%	0%	0%	0%	0%	0%
							grade 2 events	5043	5408	5107	4422	4817	21014
								2%	3%	2%	2%	2%	9%
							grade 3 events	2208	2351	2068	2125	2213	9093
								1%	1%	1%	1%	1%	3%
							grade 4 events	2055	2359	2146	2214	2190	9269
								1%	1%	1%	1%	1%	4%
							grade 5 events	7512	8012	7077	8495	8636	24062
								4%	4%	3%	4%	4%	10%
							grade 6 events	4036	4600	3800	3890	4639	54557
								2%	2%	1%	2%	2%	23%
							grade 7 events	148995	145048	169749	157707	165367	101624
								84%	82%	85%	84%	84%	44%

2.2 Compared Parameters

Parameter	Planned	Actual	Parameter	Planned	Actual
Instrument	ACIS	ACIS	Obspar format version number	7	7
Detector	ACIS-012367	ACIS-012367	Obspar file type	PREDICTED	ACTUAL
Grating	NONE	NONE	Obspar update status	NONE	UPDATED
Data mode	FAINT	FAINT	CCD I0 on	Y	Y
Observation mode	POINTING	POINTING	CCD I1 on	Y	Y
[deg] Pointing RA	22.349735	22.27643575728857	CCD I2 on	Y	Y
[deg] Pointing Dec	-73.519582	-73.53759862397757	CCD I3 on	Y	Y
[deg] Pointing Roll	190.546095	190.6844843688822	CCD S0 on	N	N
[mm] SIM focus pos	-0.782348	-0.7809083437167272	CCD S1 on	N	N
[mm] SIM defocus	0	0.001439871863259334	CCD S2 on	O1	Y
[mm] SIM translation stage pos	-233.592463	-233.5874344608287	CCD S3 on	Y	Y
[mm] SIM translation stage offset	0	-0.005018542100998502	CCD S4 on	N	N
[s] Observation start time (MET)	386612748.184000	386610546.91308	CCD S5 on	N	N
Observation start date	2010-04-02T16:24:42	2010-04-02T15:49:06	Number of optional ACIS chips dropped	0	0
[s] Observation end time (MET)	386637748.184000	386639029.10203	On-chip summing requested	N	N
Observation end date	2010-04-02T23:21:22	2010-04-02T23:43:49	Subarray requested	NONE	NONE
Read mode	TIMED	TIMED	Alternating exposures requested	N	N
			[s] Primary exposure time	0.000000	3.2

2.3 Aspect



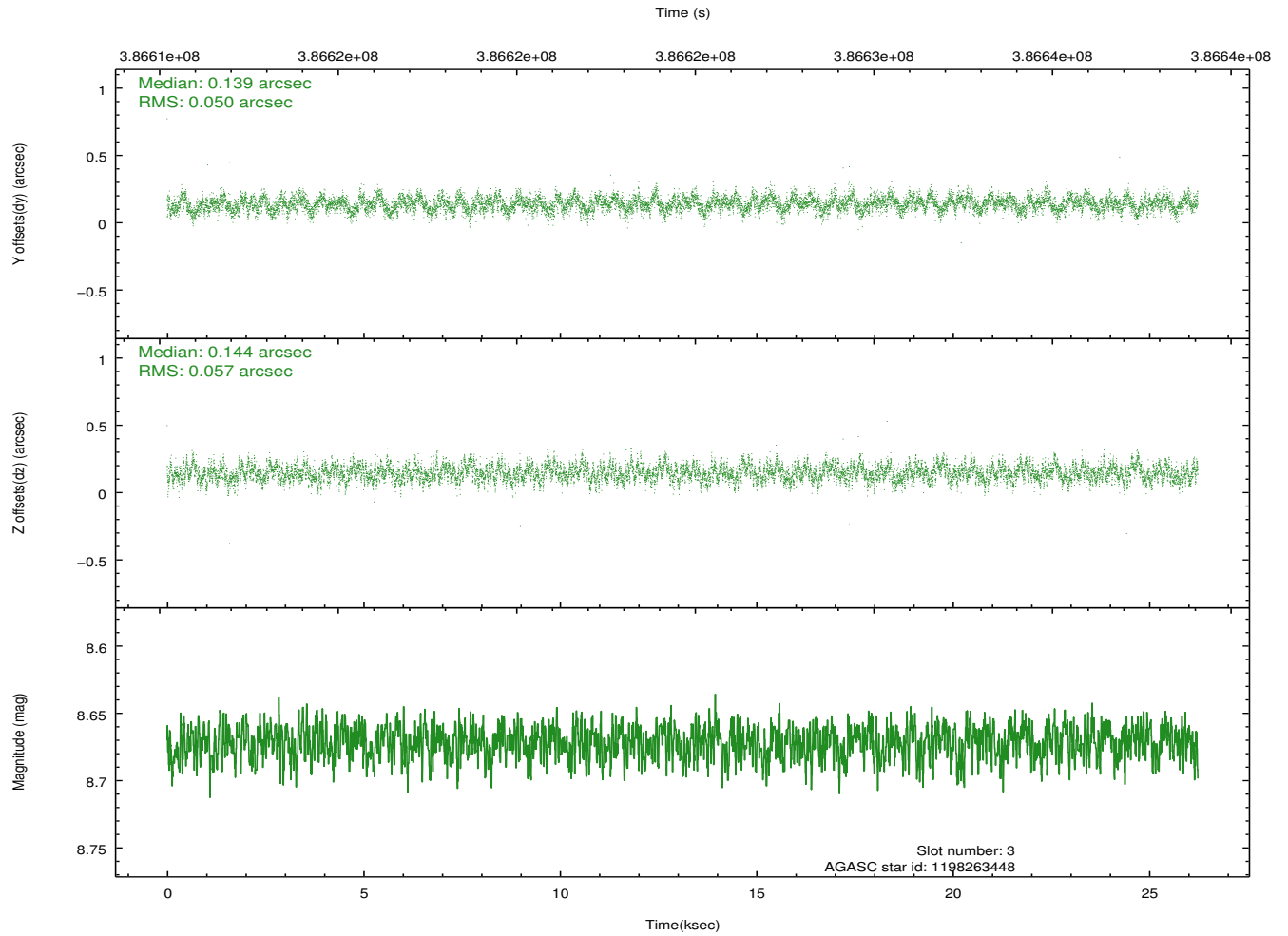
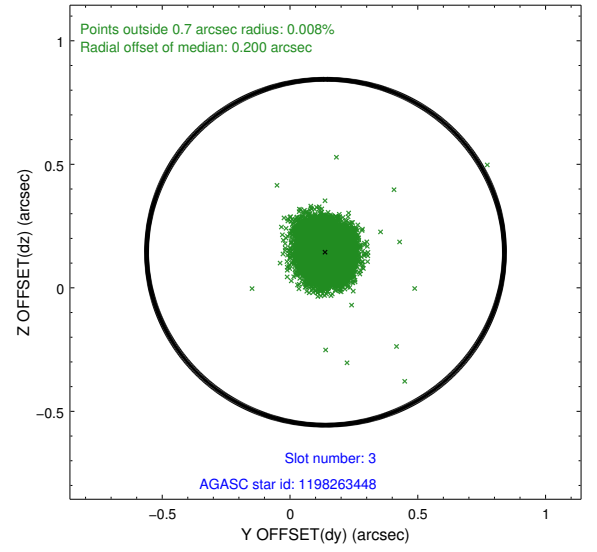
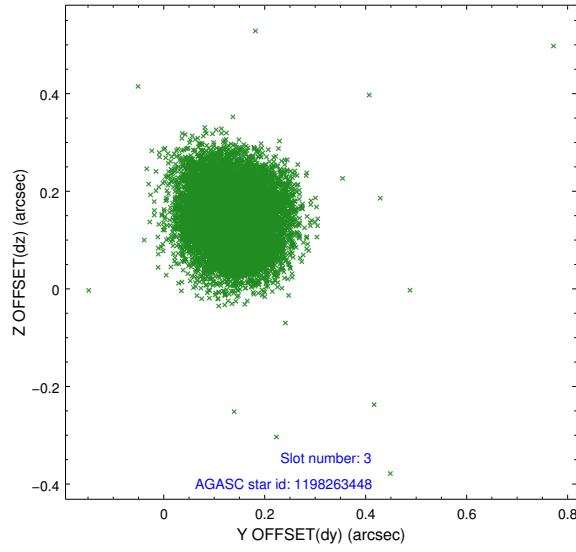


Slot Statistics

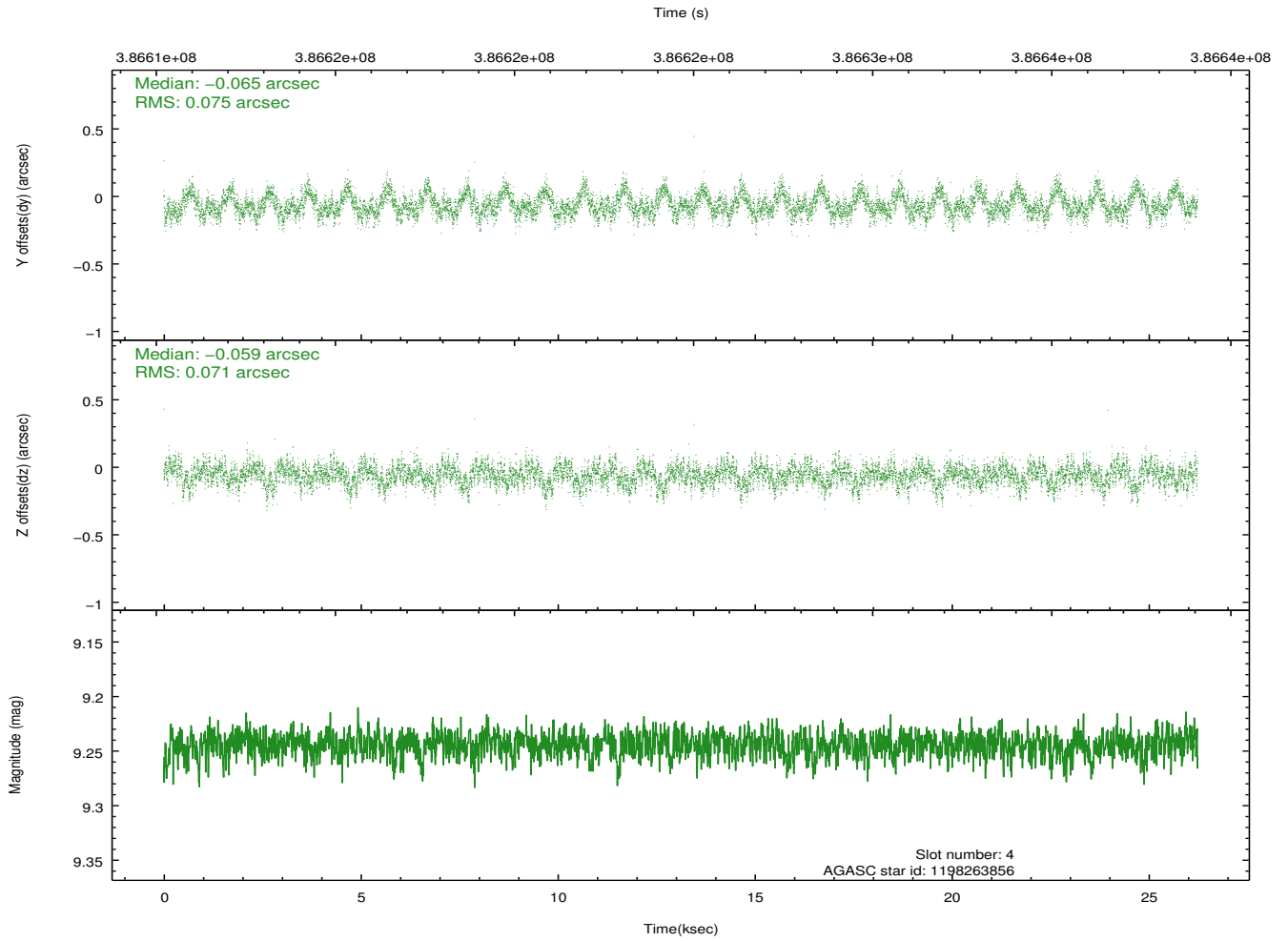
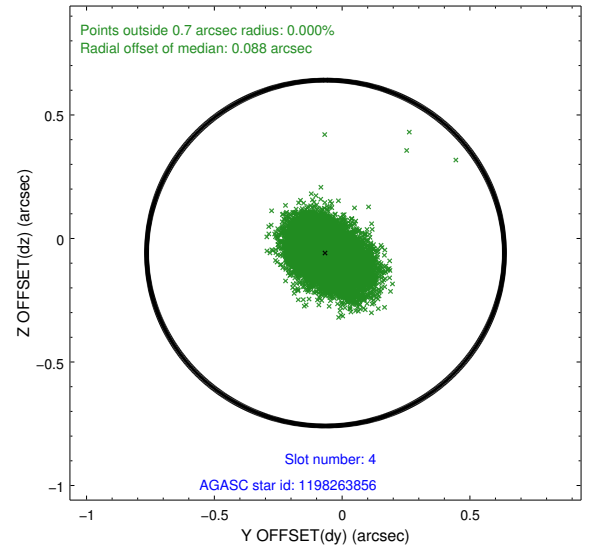
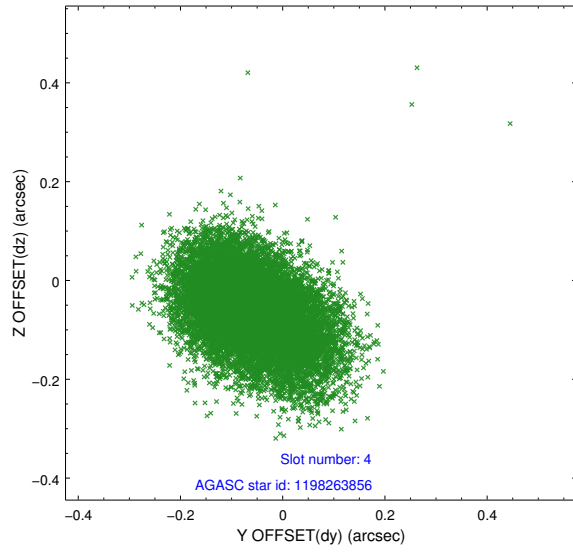
slot	status	id	mag	n_pts	med_dy	med_dz	dr1	dr2	ra	dec	mean_y	mean_z
0	FID	ACIS-I-1	7.02	6401	0.065	-0.038	0.013	0.034	0.000000	0.000000	924.59	-839.93
1	FID	ACIS-I-5	7.02	6400	-0.225	0.061	0.012	0.025	0.000000	0.000000	-1823.73	1057.62
2	FID	ACIS-I-6	7.02	6401	0.070	0.051	0.016	0.023	0.000000	0.000000	390.05	1702.22
3	GUIDE	1198263448	8.67	12794	0.139	0.144	0.080	0.129	23.988893	-72.831877	-2160.68	-2091.88
4	GUIDE	1198263856	9.24	12788	-0.065	-0.059	0.109	0.180	23.344483	-73.858921	-753.74	1391.22
5	GUIDE	1198264032	7.99	12795	0.121	-0.017	0.069	0.108	22.563131	-73.173817	-445.42	-1182.14
6	GUIDE	1198269920	8.27	12792	-0.047	0.122	0.085	0.134	20.316466	-73.033728	1786.24	-2074.33
7	GUIDE	1198272400	9.17	12789	-0.151	-0.186	0.087	0.138	20.411923	-73.620598	2006.32	28.98

2.4 Star Slots

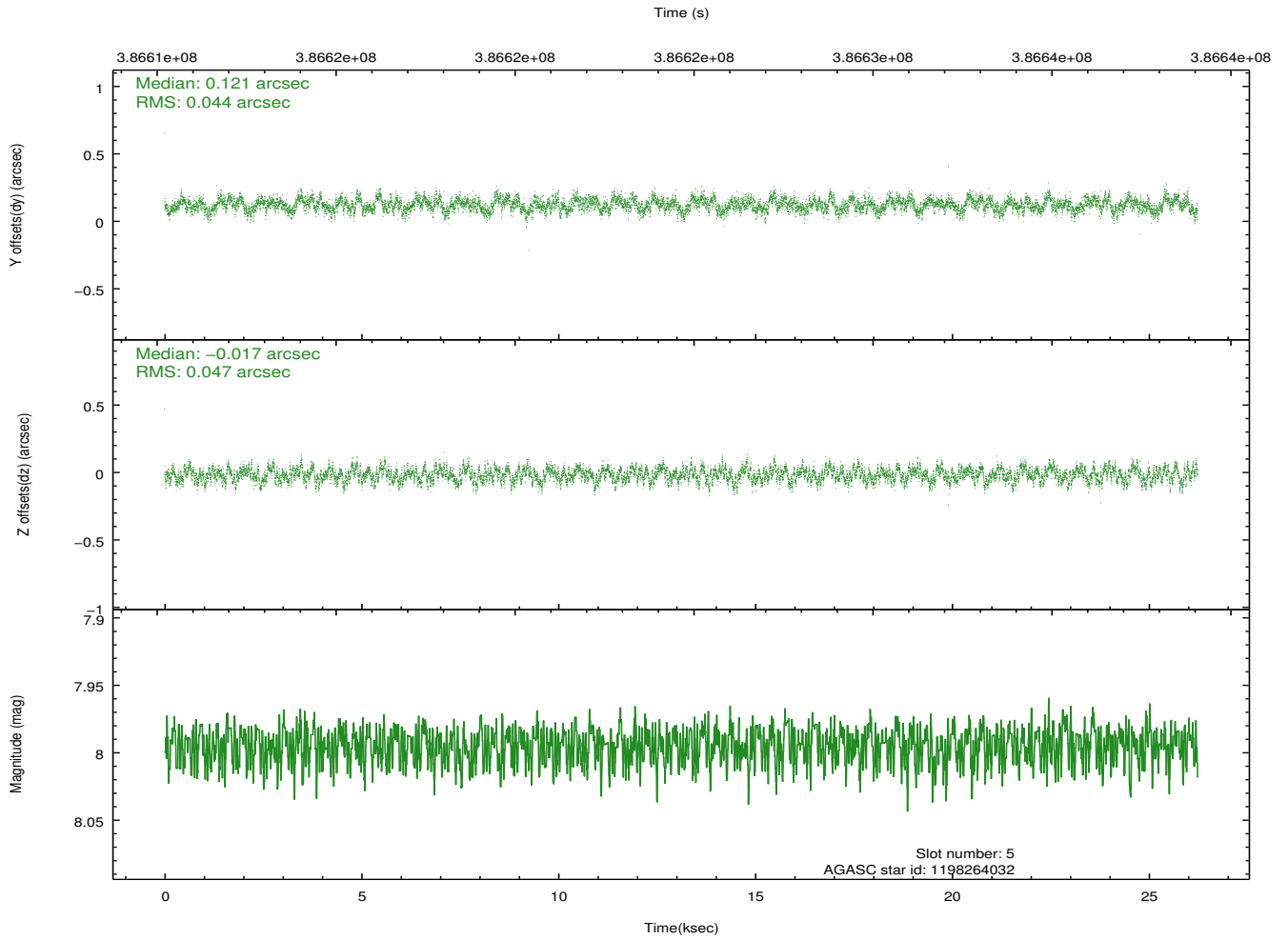
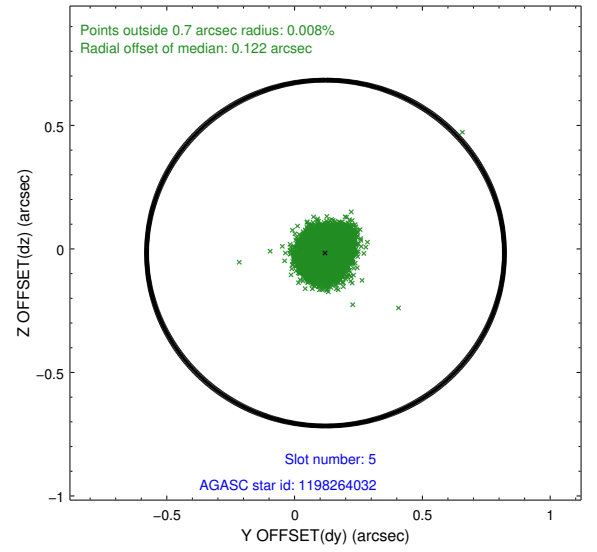
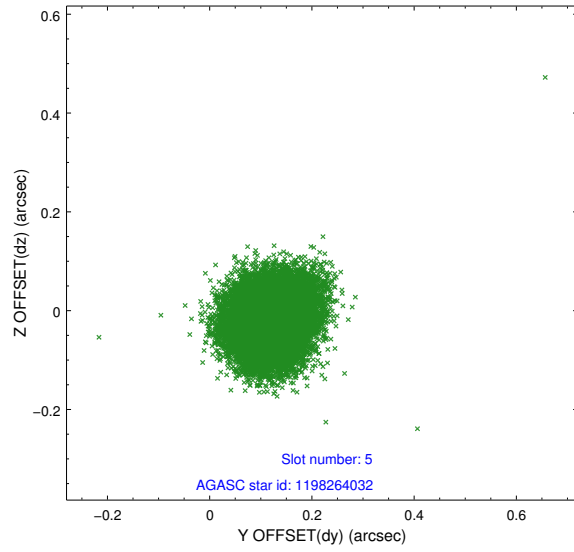
2.4.1 Slot 3



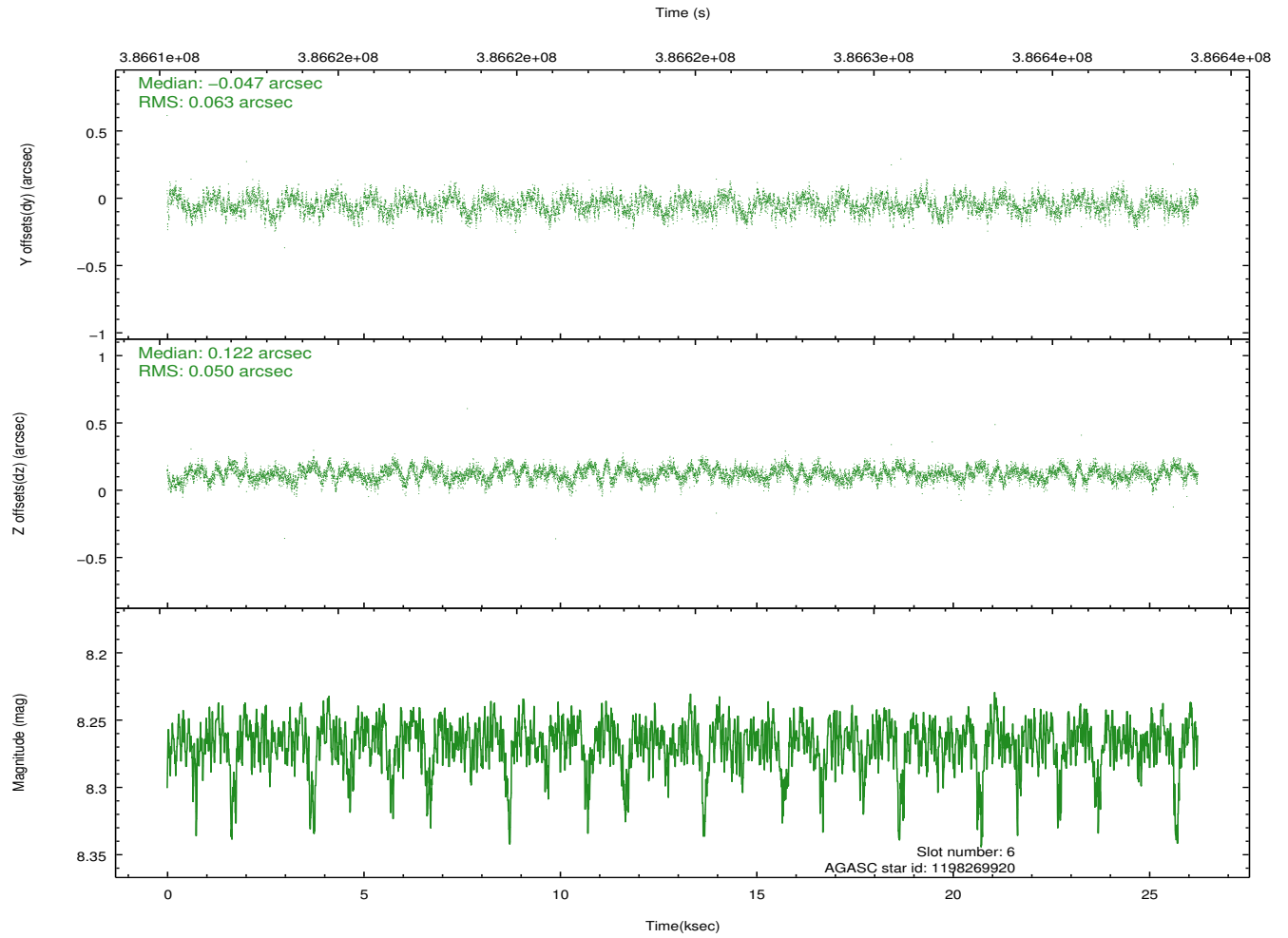
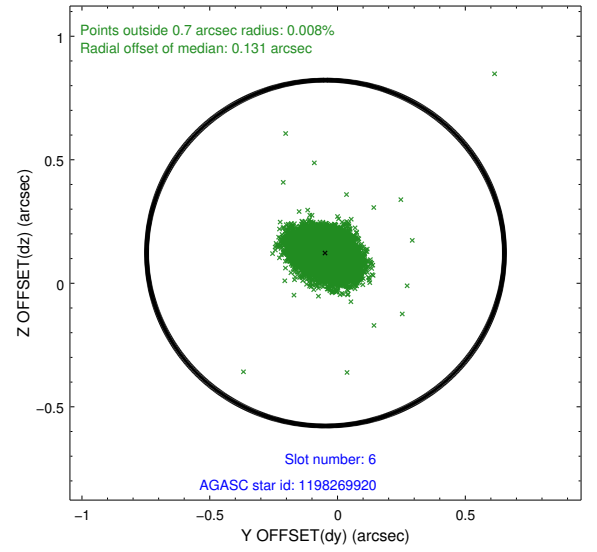
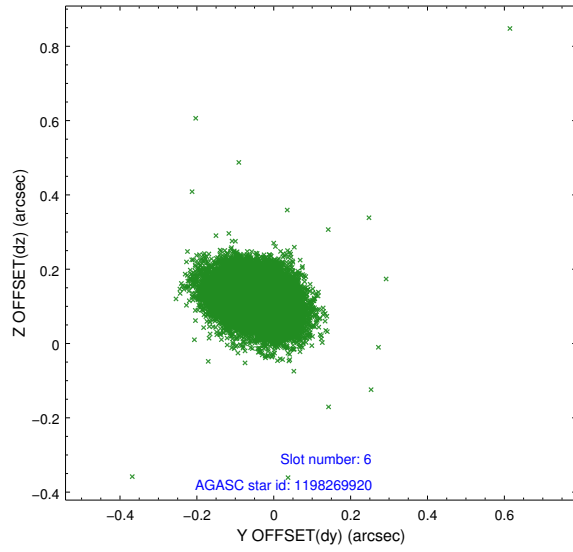
2.4.2 Slot 4



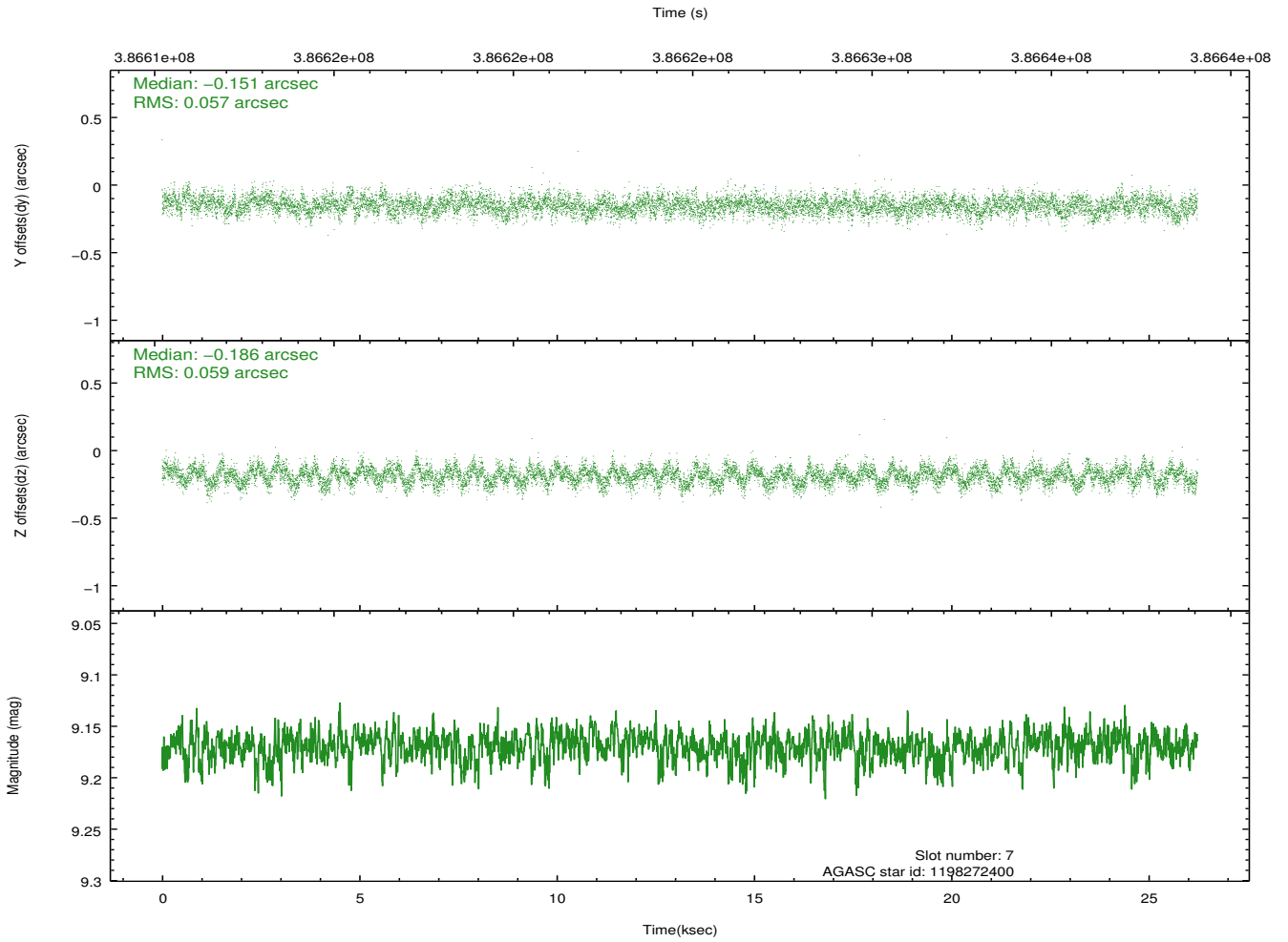
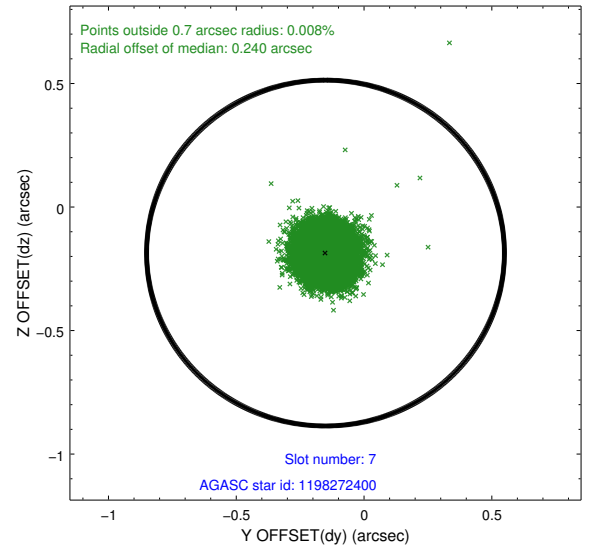
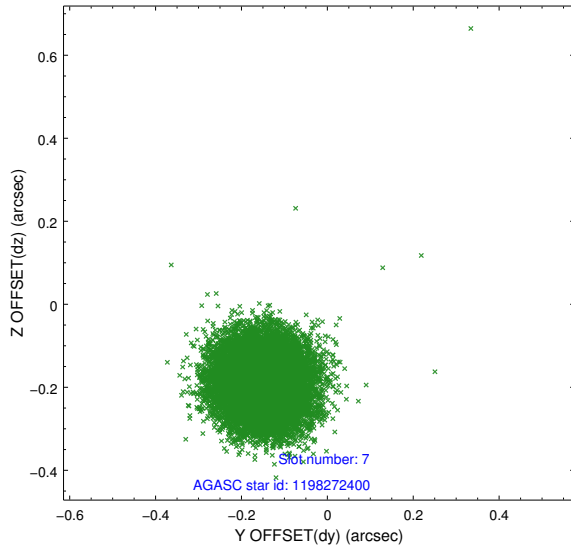
2.4.3 Slot 5



2.4.4 Slot 6

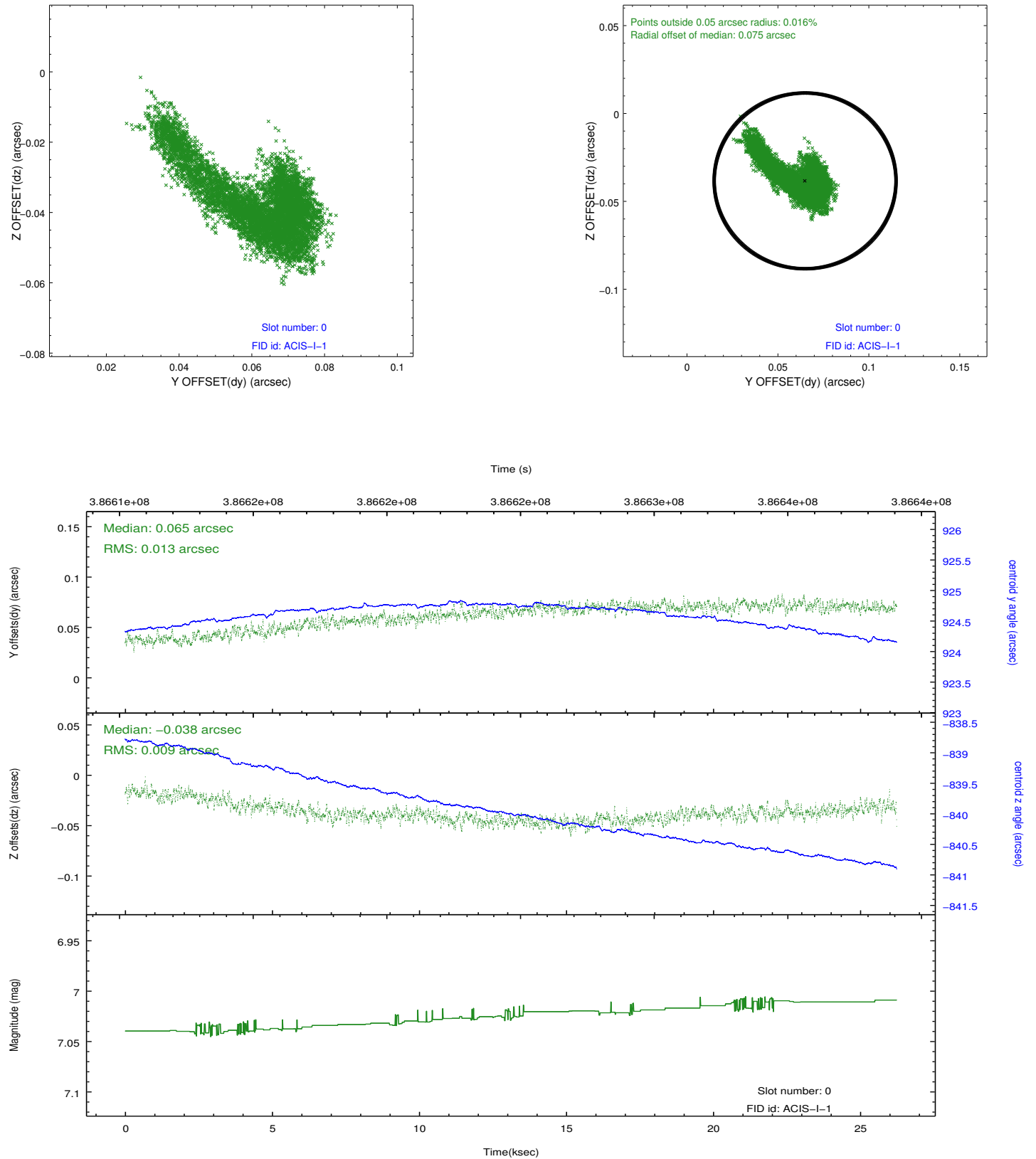


2.4.5 Slot 7

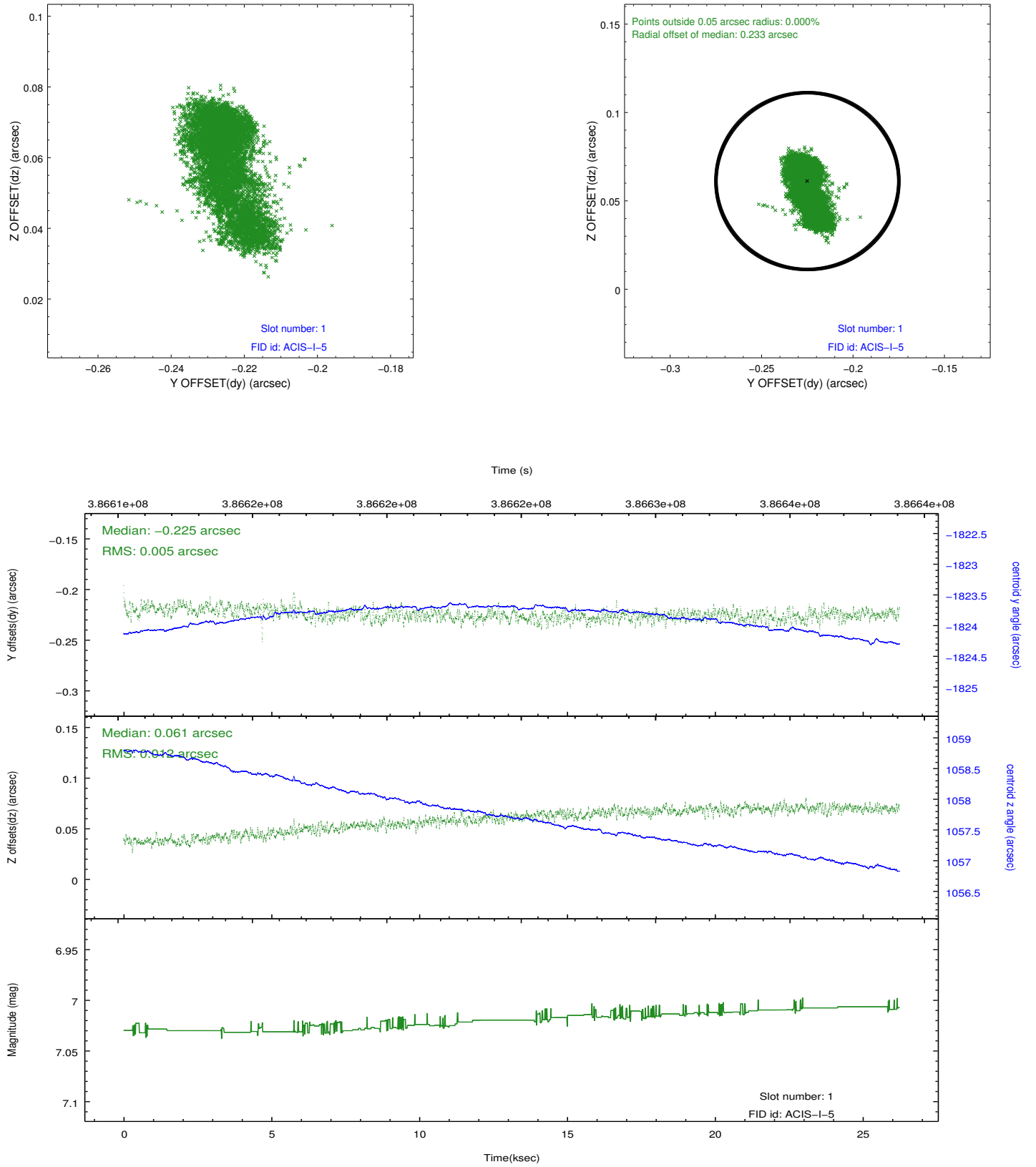


2.5 FID Slots

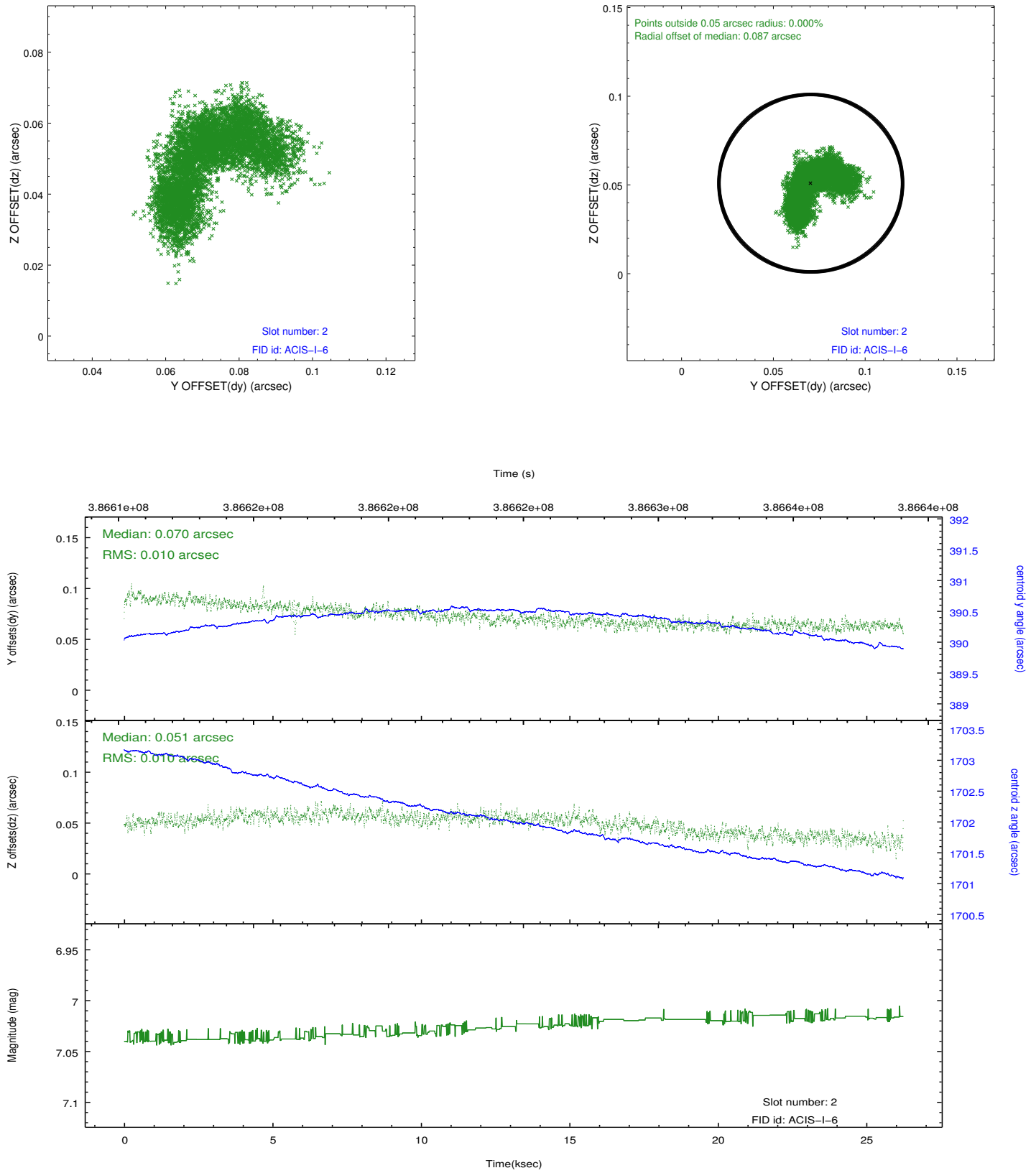
2.5.1 Slot 0



2.5.2 Slot 1



2.5.3 Slot 2



A Summary

A.1 Status

V&V Scientist	Jen Lauer
V&V Date (YYYY-MM-DD)	2012.06.29
V&V Edition	1
V&V Disposition and Status	OK
V&V Charge Time	25.048987700582

A.2 Comments